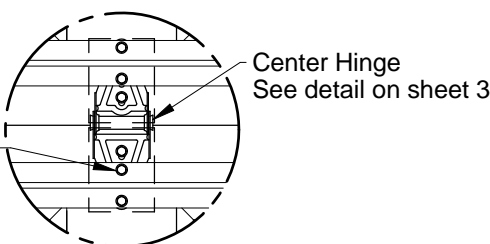
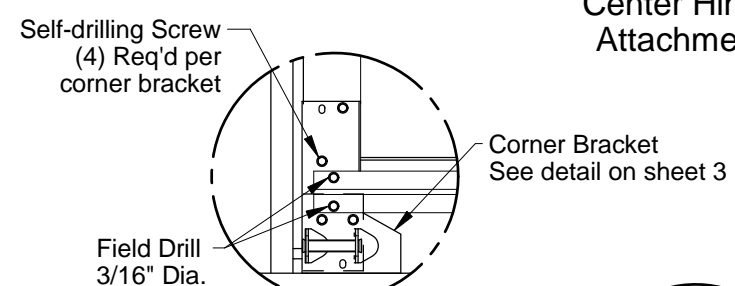


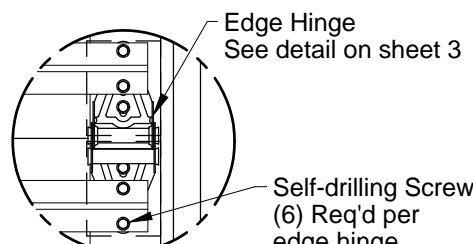
**Top Fixture Attachment**



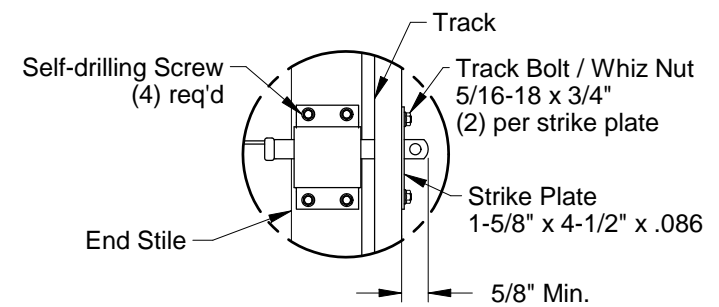
**Center Hinge Attachment**



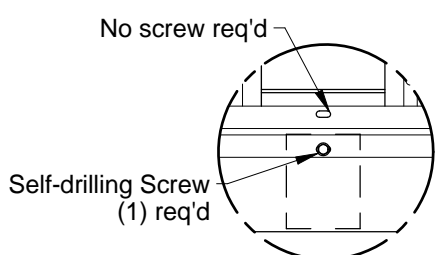
**Corner Bracket Attachment**



**Edge Hinge Attachment**



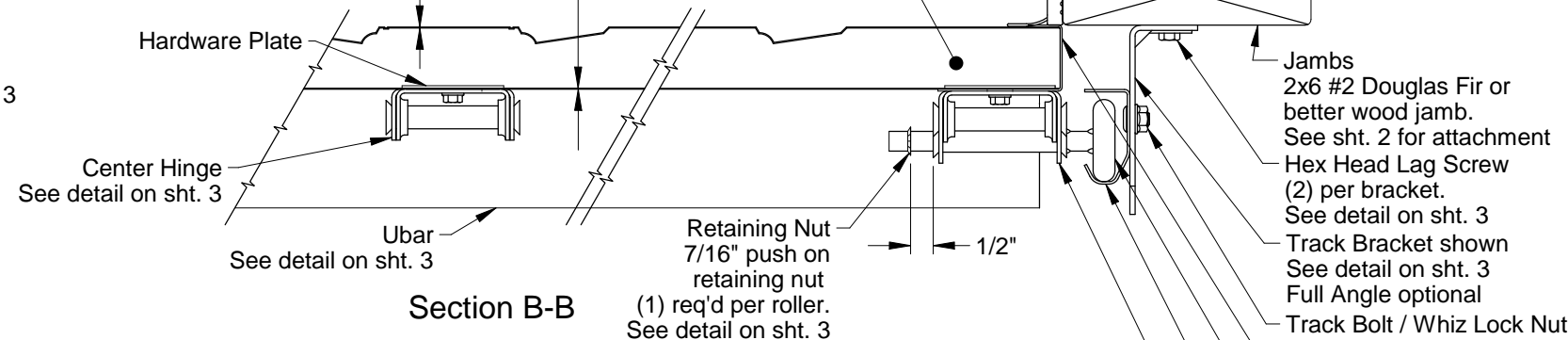
**Optional Interior Lock Attachment**



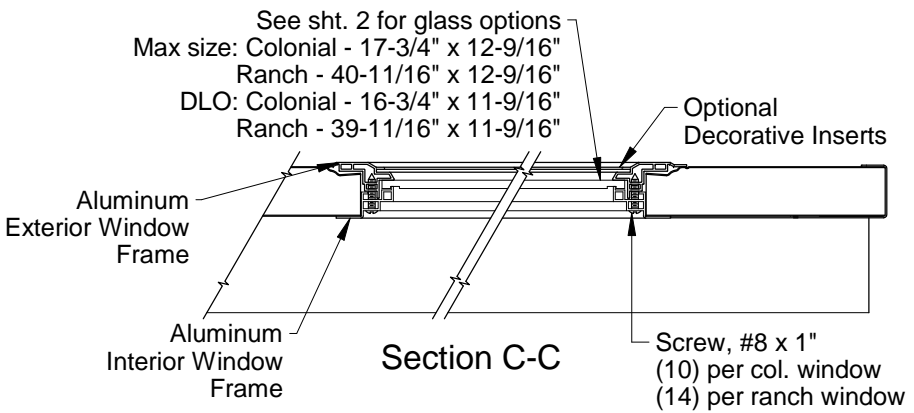
**Bottom Section Center U-bar Attachment**

**Interior Skin**  
 .013 thick G-40 galvanized steel with an epoxy primer and baked on polyester finish which is roll-formed with wood grain texture.

**Exterior Skin**  
 .014 thick G-40 galvanized steel with an epoxy primer and baked on polyester finish which is roll-formed with wood grain texture.



**Section B-B**



**Section C-C**

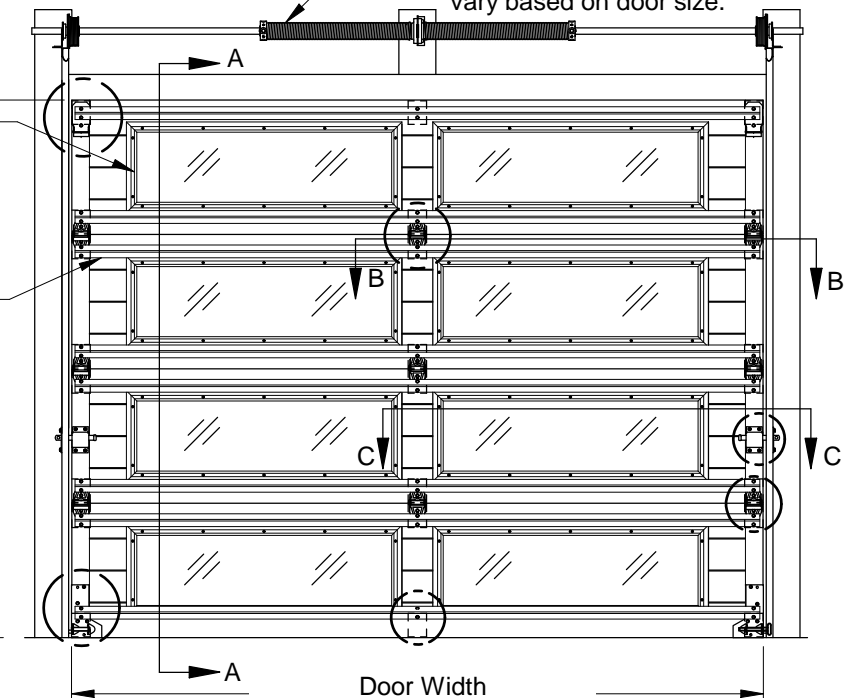
See sht. 2 for glass options  
 Max size: Colonial - 17-3/4" x 12-9/16"  
 Ranch - 40-11/16" x 12-9/16"  
 DLO: Colonial - 16-3/4" x 11-9/16"  
 Ranch - 39-11/16" x 11-9/16"

Spring Counterbalance  
 Spring wire individually calculated to counterbalance door.  
 Quantity and size of spring will vary based on door size.

Door Height  
 7'-0" High shown  
 Other door heights available up to 18'-0" using 18" or 21" high sections

Impact Resistant Windows (Optional) Colonial or Ranch (Ranch shown)  
 Any combination of partially glazed to fully glazed (fully glazed shown)

Steel Reinforcement (2) U-bar per section fastened to all center and end stiles using (2) self-drilling screws at each stile.  
 Locks required on doors not electrically operated.



**Interior Elevation**

Doors tested per ANSI/DASMA 108 for static air pressure and ANSI/DASMA 115 for large missile impact and cyclic wind pressure

AP200 / AP200C									
Max. Door Width	Colonial		Ranch		Carriage House				
	Hinges per Section	Design Loads	Hinges per Section	Design Loads	Hinges per Section	Design Loads			
8'-0"	1	60.0 -65.0	1	60.0 -65.0	1	60.0 -65.0			
9'-0"	1	60.0 -65.0	1	60.0 -65.0	1	60.0 -65.0			

John E. Scates  
 2560 King Arthur Blvd, Ste 124-54  
 Lewisville, TX 75056  
 FL PE #51737  
 TX PE #56308-12203

Professional Engineer's seal provided only for verification of wind load construction details

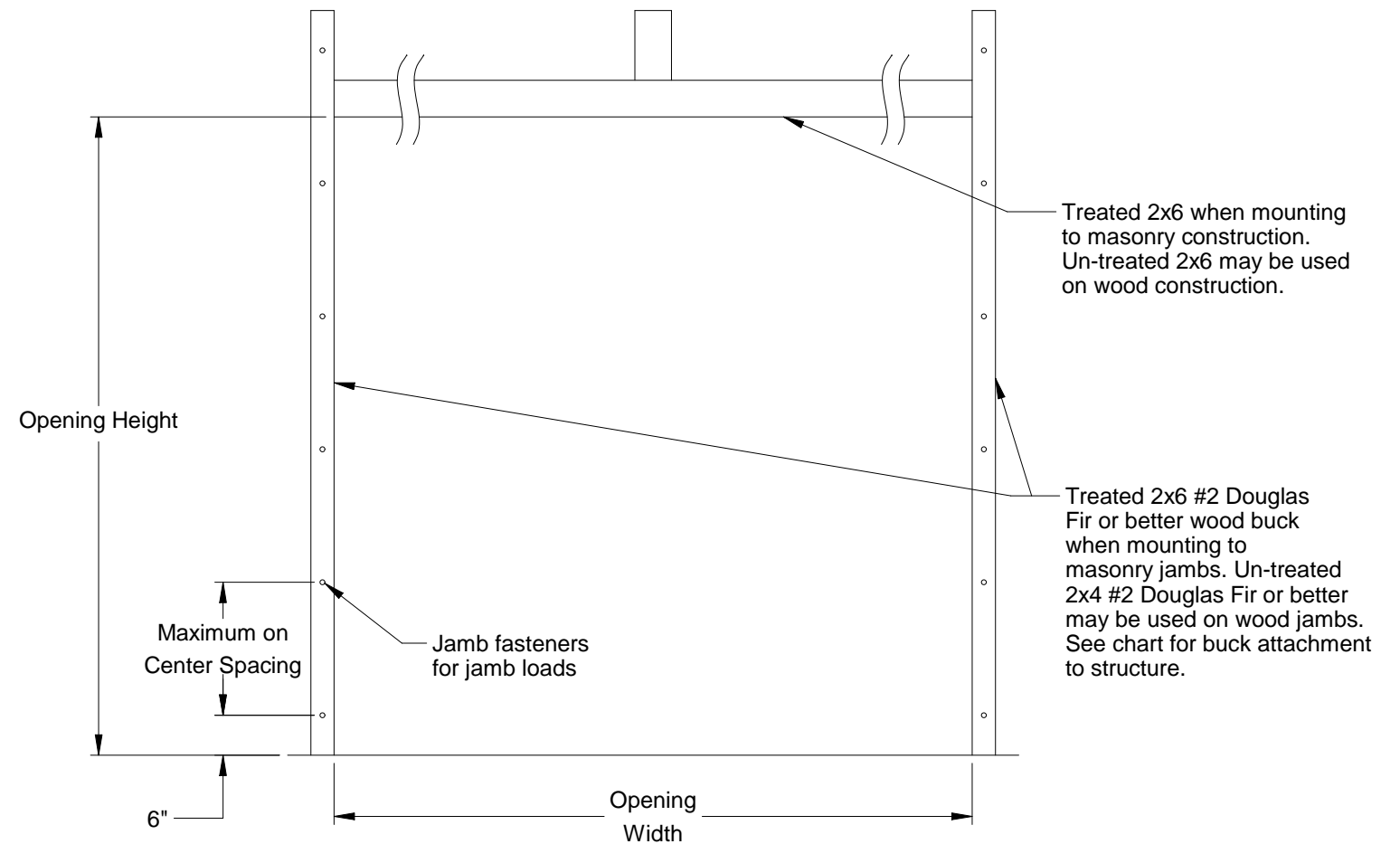
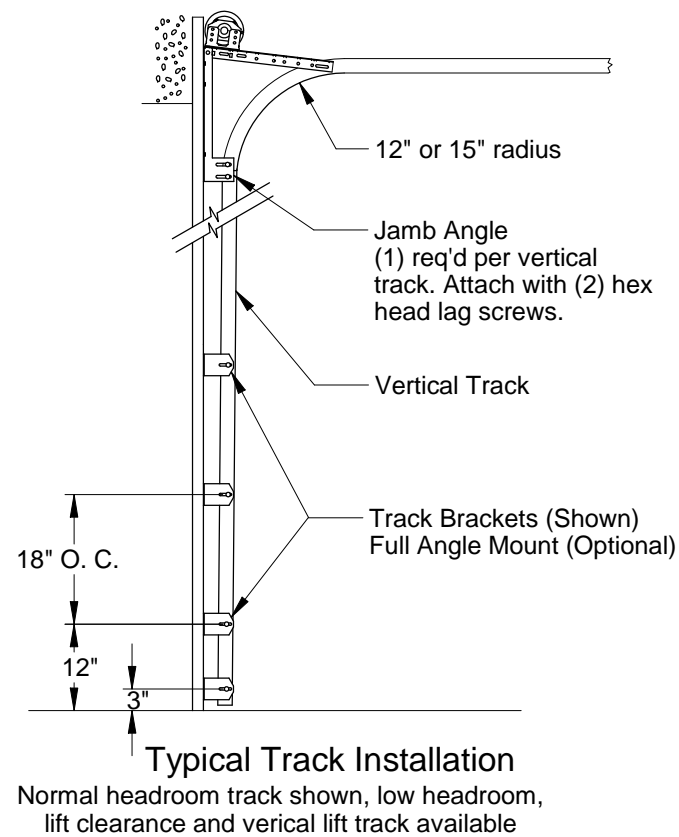
Rev.	Description	ECO	Date
B	Removed vent option on sheet 1.	7679.04	12/09/19
A	New release for production.	7679.01	04/17/19

Scale: None  
 Drawn by: R. Frey  
 Checked by: G. Wedekind  
 Date: 04/17/19  
 ECO: 7679.01

**RAYNOR**  
 1101 East River Road  
 Dixon, IL, 61021

Title: Spec, Wind Load Aspen - AP200

No. **P-2914** Sheet 1 of 3 Rev **B**

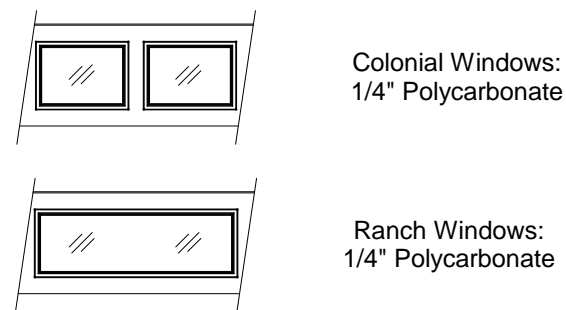


**Jamb Attachment Notes:**

1. Maximum Positive Load per Jamb =  $(9'-0" \times 60.0 \text{ PSF}) / 2 = 270 \text{ lbs. per foot.}$
2. Maximum Negative Load per Jamb =  $(9'-0" \times -65.0 \text{ PSF}) / 2 = 293 \text{ lbs. per foot.}$
3. Design of the supporting structure shall be the sole responsibility of the building designer and shall be designed for the jamb loads listed in notes 1 and 2.
4. Alternate jamb attachments may be used if approved by a registered Professional Engineer.
5. DASMA Technical Data Sheet TDS-161 may be used for alternate jamb attachments.
6. 3/8" diameter lag screws required 1/16" pilot hole and 1-1/2" minimum required distance.

**2x6 Attachment to Structure**

Rev.	Structure Type	Fastener Type	Minimum Embedment	Minimum Edge Distance	Minimum on Center Spacing	Maximum on Center Spacing	Allowable Tension Load
A	2500 PSI Min. Concrete	1/4" Tapcon+ (Plus) with 1-1/8" OD Washer	2"	2.5	6"	23"	526
A	Southern Pine	3/8" x 3" Lag with 1-1/8" OD Washer	1.50"	1.50"	1.50"	24"	655
A	Spruce Pine Fir	3/8" x 3" LAG with 1-1/8" OD Washer	1.50"	1.50"	1.50"	21"	482



**Window Options**

John E. Scates  
2560 King Arthur Blvd, Ste 124-54  
Lewisville, TX 75056  
FL PE #51737  
TX PE #56308-f2203

Scale: None
Drawn by: R. Frey
Checked by: G. Wedekind
Date: 04/17/19
ECO: 7679.01



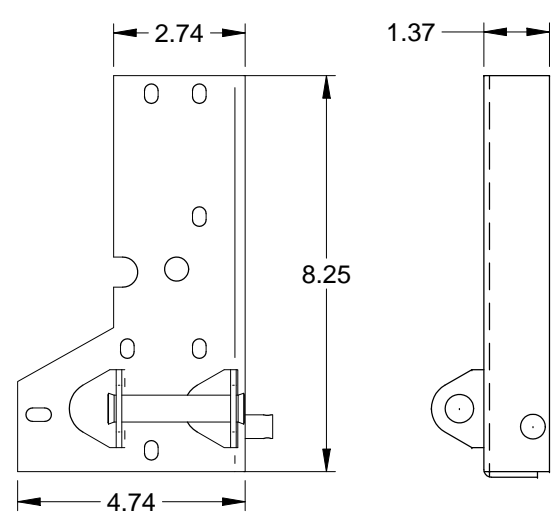
1101 East River Road  
Dixon, IL. 61021

Title: Spec, Wind Load  
Aspen - AP200

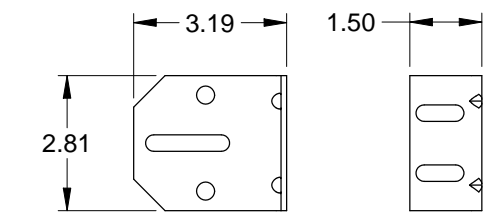
No. P-2914

Sheet 2

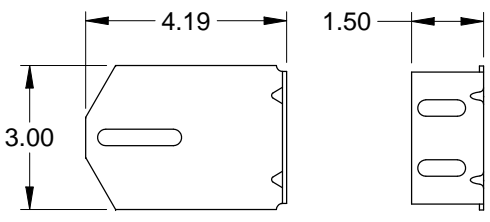
Rev B



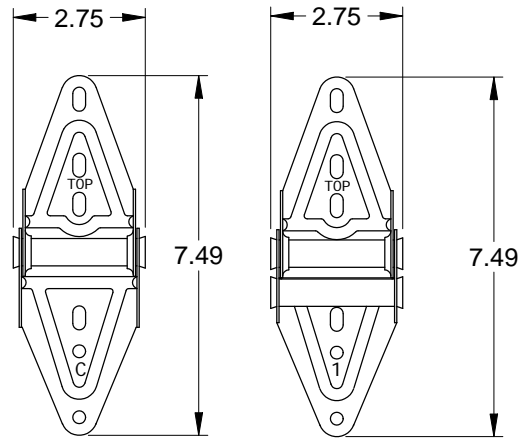
Corner Bracket  
.116 Galv. Steel



3" Track Bracket  
.116 Galv. Steel

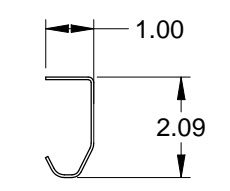


4" Track Bracket  
.116 Galv. Steel

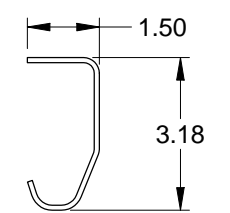


Center Hinge  
.045 Galv. Steel

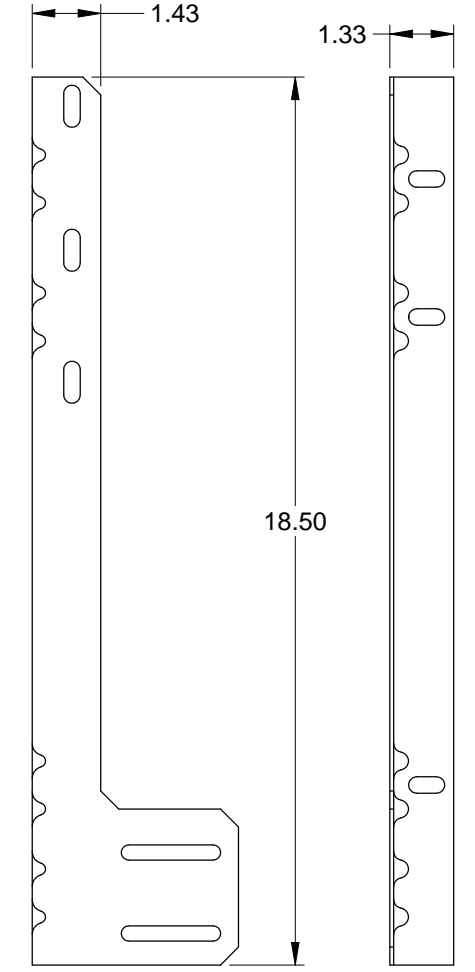
Edge Hinge  
.086 Galv. Steel



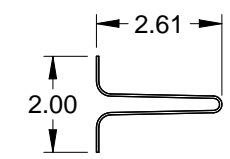
2" Track  
.086 Galv. Steel



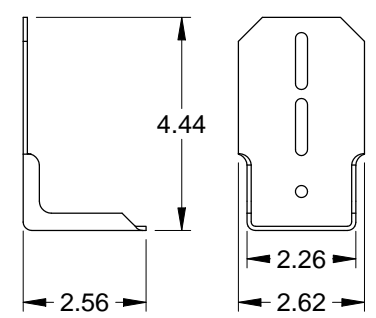
3" Track (Optional)  
.105 Galv. Steel



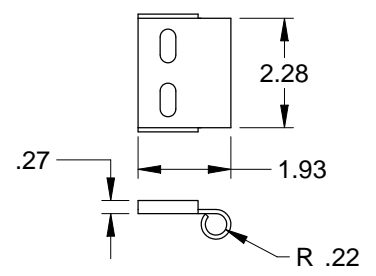
Jamb Angle  
.078 Galv. Steel



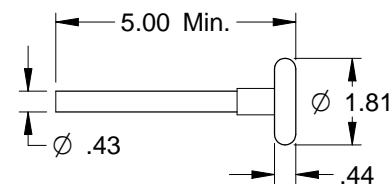
Steel U-bar  
18 Ga. (.049 min.) Galvanized  
High Tensile Steel  
80 KSI Minimum Yield



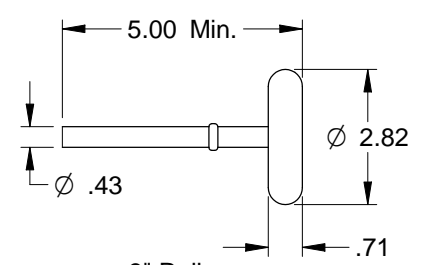
Top Fixture  
.086 Galv. Steel



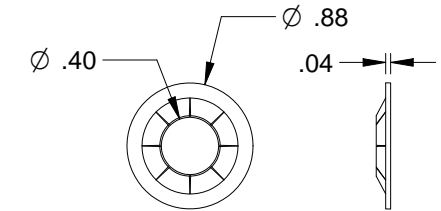
Roller Carrier  
.116 Galv. Steel  
Attached to Top Fixture  
w/(2) Track Bolts and Whiz Nuts



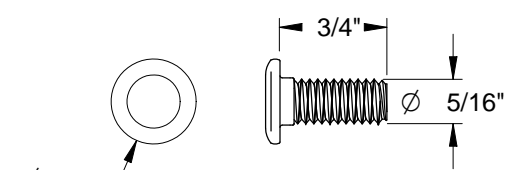
2" Roller  
Nylon 11-ball (Std.)  
Steel 10-ball (Opt.)



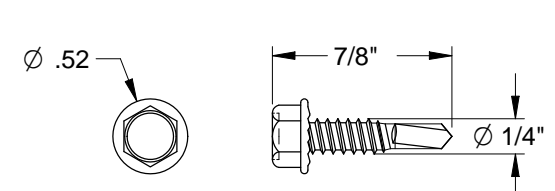
3" Roller  
Steel 10-ball (Opt.)



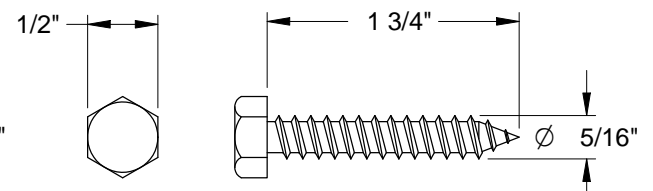
Retaining Nut



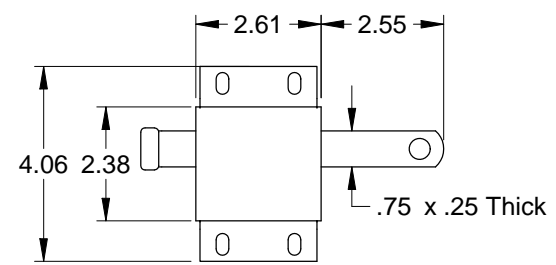
Track Bolt



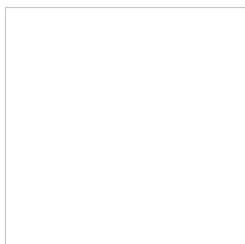
Self-Drilling Screw



Hex Head Lag Screw



Slide Lock  
Case .086 Galv. Steel



John E. Scates  
2560 King Arthur Blvd, Ste 124-54  
Lewisville, TX 75056  
FL PE #51737  
TX PE #56308-f2203

Scale: None	<p>1101 East River Road Dixon, IL 61021</p>	Title: Spec, Wind Load Aspen - AP200	
Drawn by: R. Frey		No. P-2914	Sheet 3
Checked by: G. Wedekind			Rev B
Date: 04/17/19			
ECO: 7679.01			