

Doors tested per ANSI/DASMA 108 for static air pressure and ANSI/DASMA 115 for large missile impact and cyclic wind pressure

Maximum Door Width	Colonial			Ranch			Carriage House		
	Stiles per Sect.	Hinges per Sect.	Design Loads	Stiles per Sect.	Hinges per Sect.	Design Loads	Stiles per Sect.	Hinges per Sect.	Design Loads
8'-2"	3	3	43.5 -50.0	3	3	43.5 -50.0	3	3	43.5 -50.0
9'-2"	3	3		3	3		3	3	
10'-2"	4	4		3	3		3	3	
12'-2"	5	5		5	5		5	5	
14'-2"	6	6		7	7		7	7	
16'-2"	7	7		7	7		7	7	
18'-2"	7	7							

John E. Scates
2560 King Arthur Blvd, Ste 124-54
Lewisville, TX 75056
FL PE #51737
TX PE #56308-12203

Professional Engineer's seal provided only for verification of wind load construction details

Rev.	Description	ECO	Date	ECO: 7679.01
B	Removed vent option on sheet 1.	7679.04	12/09/19	Checked by: G. Wedekind
A	New release for production.	7679.01	02/18/19	Date: 02/18/19

Scale: None

Drawn by: R. Frey

Checked by: G. Wedekind

Date: 02/18/19

ECO: 7679.01

RAYNOR

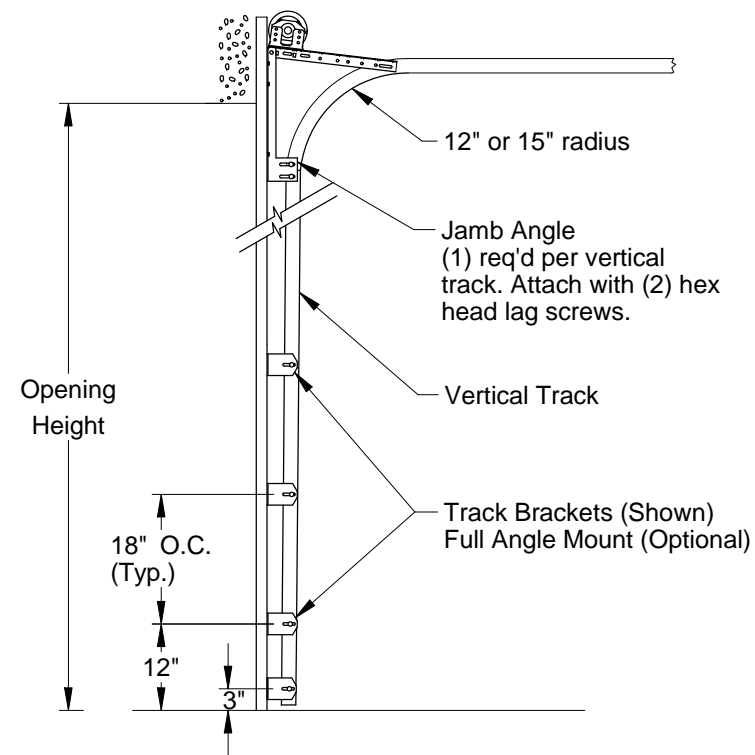
1101 East River Road
Dixon, IL 61021

Title: Spec, Wind Load TradeMark

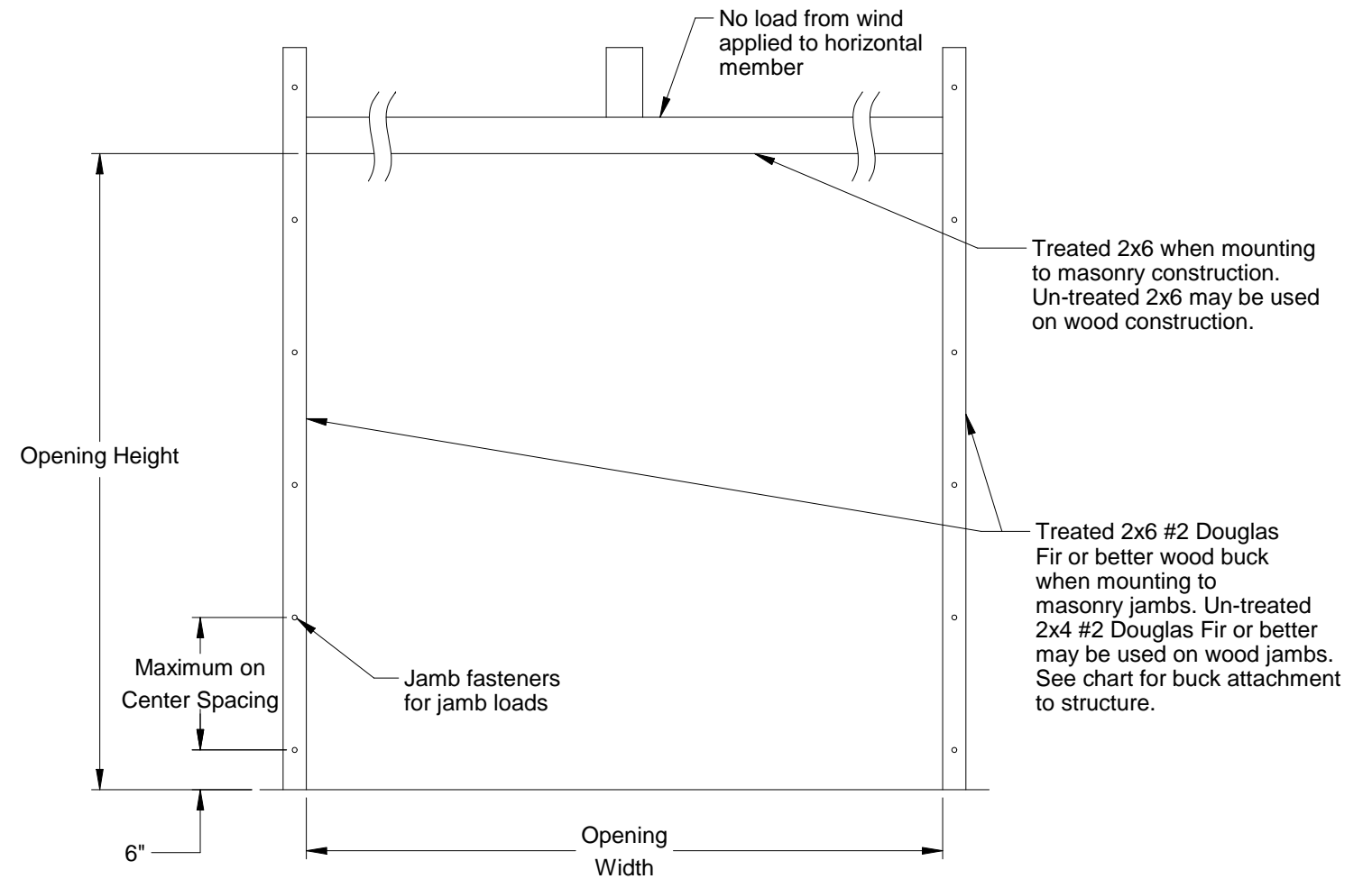
No. P-2908

Sheet 1 of 3

Rev B



Typical Track Installation
 Normal headroom track shown, low headroom, lift clearance and vertical lift track available

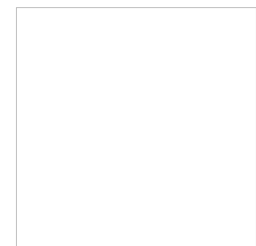


Jamb Attachment Notes:

1. Maximum Positive Load per Jamb = $(18'-2" \times 43.5 \text{ PSF}) / 2 = 396 \text{ lbs. per foot.}$
2. Maximum Negative Load per Jamb = $(18'-2" \times -52.0 \text{ PSF}) / 2 = 474 \text{ lbs. per foot.}$
3. Design of the supporting structure shall be the sole responsibility of the building designer and shall be designed for the jamb loads listed in notes 1 and 2.
4. Alternate jamb attachments may be used if approved by a registered Professional Engineer.
5. DASMA Technical Data Sheet TDS-161 may be used for alternate jamb attachments.
6. 3/8" diameter lag screws required 1/16" pilot hole and 1-1/2" minimum required distance.

2x6 Attachment to Structure

Structure Type	Fastener Type	Minimum Embedment	Minimum Edge Distance	Minimum on Center Spacing	Maximum on Center Spacing	Allowable Tension Load
2500 PSI Min. Concrete	1/4" Tapcon+ (Plus) with 1-1/8" OD Washer	2"	2.5"	6"	15"	526
Southern Pine	3/8" x 3" Lag with 1-1/8" OD Washer	1.50"	1.50"	1.50"	19"	655
Spruce Pine Fir	3/8" x 3" LAG with 1-1/8" OD Washer	1.50"	1.50"	1.50"	14"	482



John E. Scates
 2560 King Arthur Blvd, Ste 124-54
 Lewisville, TX 75056
 FL PE #51737
 TX PE #56308-f2203

Scale: None
Drawn by: R. Frey
Checked by: G. Wedekind
Date: 02/18/19
ECO: 7679.01



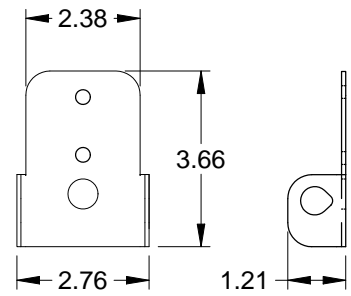
1101 East River Road
 Dixon, IL 61021

Title: Spec, Wind Load TradeMark

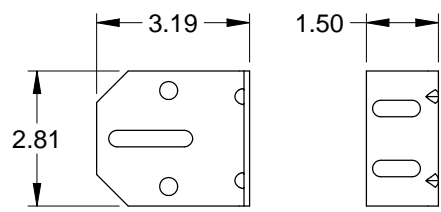
No. P-2908

Sheet 2

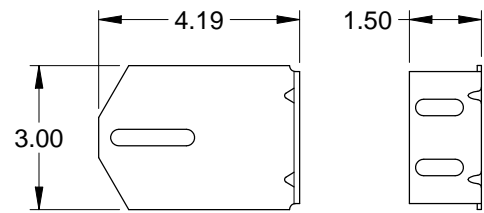
Rev B



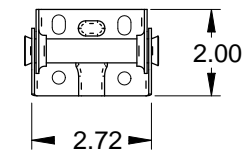
Roller Carrier
.086 Galv. Steel



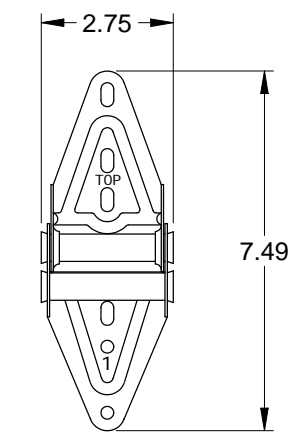
3" Track Bracket
.116 Galv. Steel



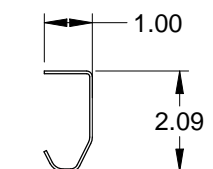
4" Track Bracket
.116 Galv. Steel



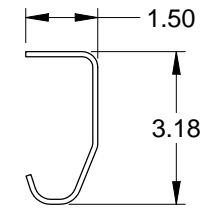
Center Hinge
.045 Galv. Steel



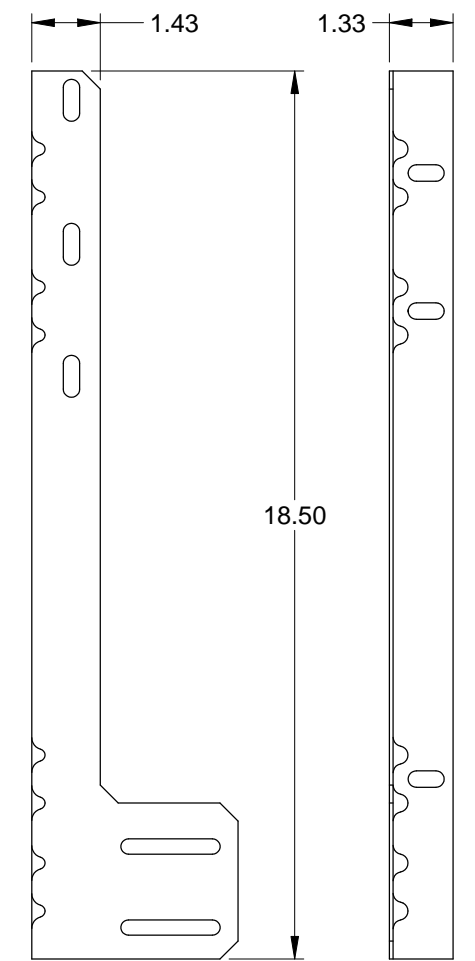
Edge Hinge
.086 Galv. Steel



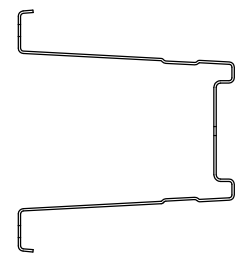
2" Track
.086 Galv. Steel



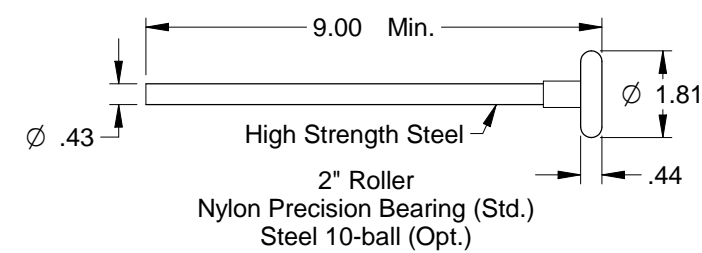
3" Track (Optional)
.105 Galv. Steel



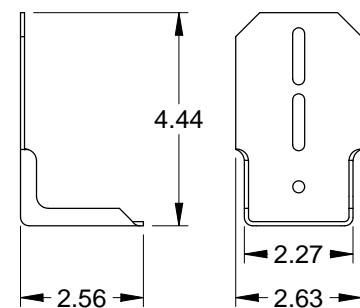
Jamb Angle
.078 Galv. Steel



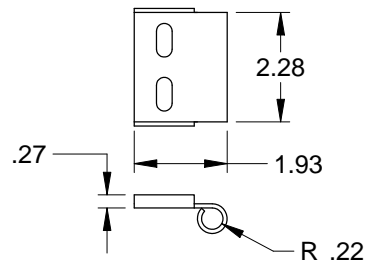
Steel Box Strut
20 Ga. (.035" Min.) Galvanized
High Tensile Steel
80 KSI Minimum Yield



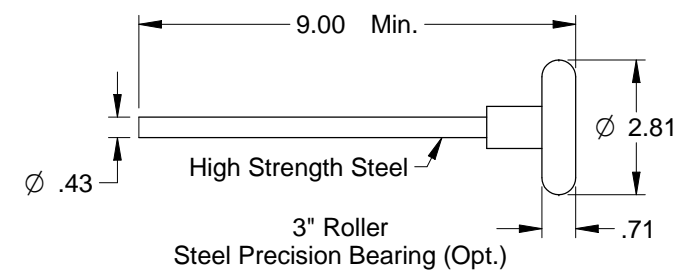
2" Roller
Nylon Precision Bearing (Std.)
Steel 10-ball (Opt.)



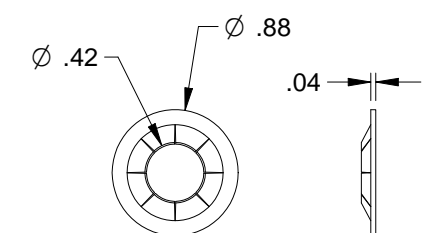
Top Fixture
.086 Galv. Steel



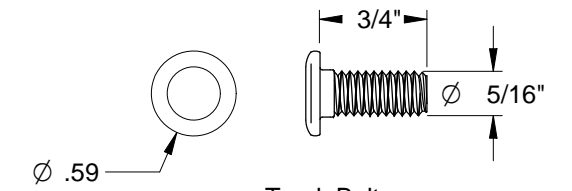
Roller Carrier
.116 Galv. Steel
Attached to Top Fixture
w/(2) Track Bolts and Whiz Nuts



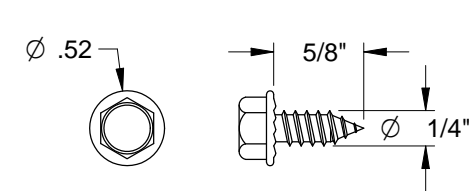
3" Roller
Steel Precision Bearing (Opt.)



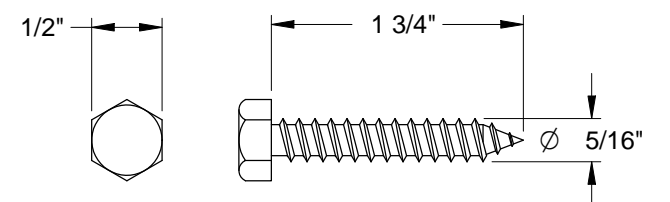
Retaining Nut



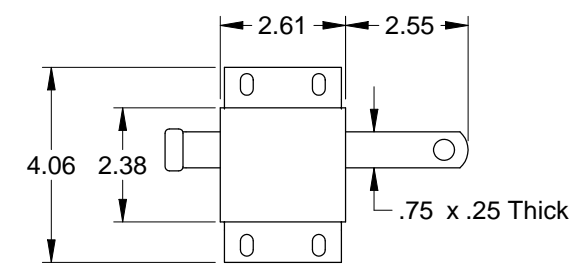
Track Bolt



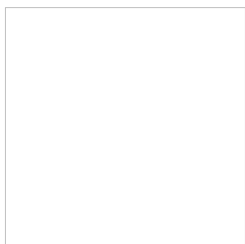
Sheet Metal Screw




Hex Head Lag Screw



Slide Lock
Case .086 Galv. Steel



John E. Scates
2560 King Arthur Blvd, Ste 124-54
Lewisville, TX 75056
FL PE #51737
TX PE #56308-f2203

Scale: None	 1101 East River Road Dixon, IL 61021	Title: Spec, Wind Load TradeMark	
Drawn by: R. Frey		No. P-2908	Sheet 3
Checked by: G. Wedekind			Rev B
Date: 02/18/19			
ECO: 7679.01			