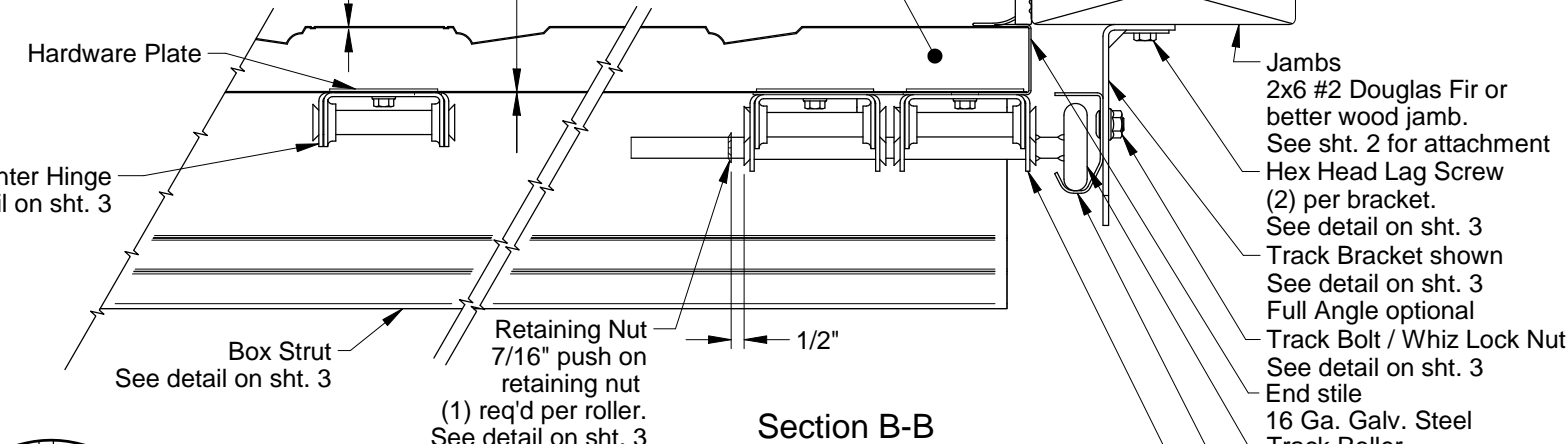


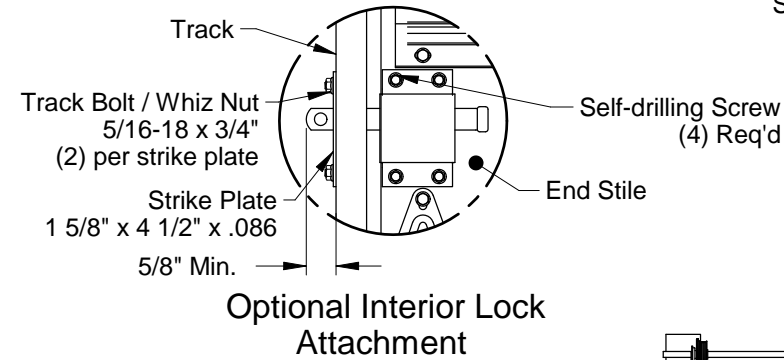
Section A-A

Interior Skin
 .013 thick G-40 galvanized steel with an epoxy primer and baked on polyester finish which is roll-formed with wood grain texture.

Exterior Skin
 .014 thick G-40 galvanized steel with an epoxy primer and baked on polyester finish which is roll-formed with wood grain texture.



Section B-B



Optional Interior Lock Attachment

Doors tested per ANSI/DASMA 108 for static air pressure and ANSI/DASMA 115 for large missile impact and cyclic wind pressure

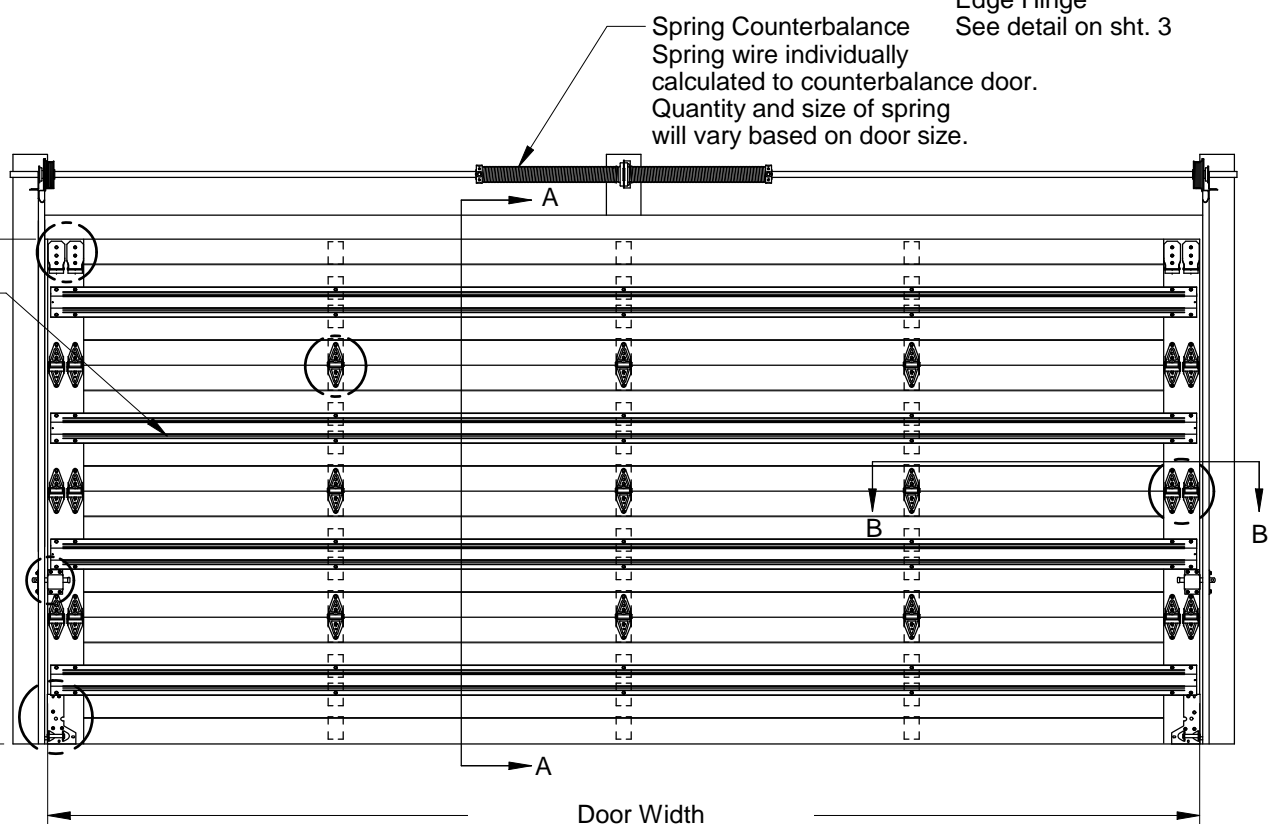
AP138 / AP138C										
Max. Door Width	Colonial		Ranch		Carriage House					
	Hinges per Section	Design Loads	Hinges per Section	Design Loads	Hinges per Section	Design Loads	Hinges per Section	Design Loads	Hinges per Section	Design Loads
8'-0"	1	66.3 -73.0	1	66.3 -73.0	1	66.3 -73.0	1	66.3 -73.0	1	66.3 -73.0
9'-0"	1	66.3 -73.0	1	66.3 -73.0	1	66.3 -73.0	1	66.3 -73.0	1	66.3 -73.0
10'-0"	2	51.5 -60.6	1	51.5 -60.6	1	51.5 -60.6	1	51.5 -60.6	1	51.5 -60.6
12'-0"	2	51.5 -60.6	2	51.5 -60.6	2	51.5 -60.6	2	51.5 -60.6	2	51.5 -60.6
14'-0"	4	37.0 -45.0	2	37.0 -45.0	2	37.0 -45.0	2	37.0 -45.0	2	37.0 -45.0
16'-0"	3	37.0 -45.0	3	37.0 -45.0	3	37.0 -45.0	3	37.0 -45.0	3	37.0 -45.0
18'-0"	3	33.4 -36.7	3	33.4 -36.7	3	33.4 -36.7	3	N/A	3	N/A
20'-0"	5	33.4 -36.7	4	33.4 -36.7	4	33.4 -36.7	3	N/A	3	N/A

AP200 / AP200C										
Max. Door Width	Colonial		Ranch		Carriage House					
	Hinges per Section	Design Loads	Hinges per Section	Design Loads	Hinges per Section	Design Loads	Hinges per Section	Design Loads	Hinges per Section	Design Loads
8'-0"	1	73.5 -80.0	1	73.5 -80.0	1	73.5 -80.0	1	73.5 -80.0	1	73.5 -80.0
9'-0"	1	73.5 -80.0	1	73.5 -80.0	1	73.5 -80.0	1	73.5 -80.0	1	73.5 -80.0
10'-0"	2	56.5 -65.5	1	56.5 -65.5	1	56.5 -65.5	1	56.5 -65.5	1	56.5 -65.5
12'-0"	2	56.5 -65.5	2	56.5 -65.5	2	56.5 -65.5	2	56.5 -65.5	2	56.5 -65.5
14'-0"	4	45.0 -52.0	2	45.0 -52.0	2	45.0 -52.0	2	45.0 -52.0	2	45.0 -52.0
16'-0"	3	45.0 -52.0	3	45.0 -52.0	3	45.0 -52.0	3	45.0 -52.0	3	45.0 -52.0
18'-0"	3	33.4 -36.7	3	33.4 -36.7	3	33.4 -36.7	3	N/A	3	N/A
20'-0"	5	33.4 -36.7	4	33.4 -36.7	4	33.4 -36.7	3	N/A	3	N/A

Door Height
 7'- 0" High shown
 Other door heights available up to 10'-0" using 18" or 21" high sections

Steel Reinforcement
 (1) Box strut per section, fastened to all center and end stiles using (2) self-drilling screws at each center stile and (4) at each end stile.


Locks required on doors not electrically operated.



Interior Elevation

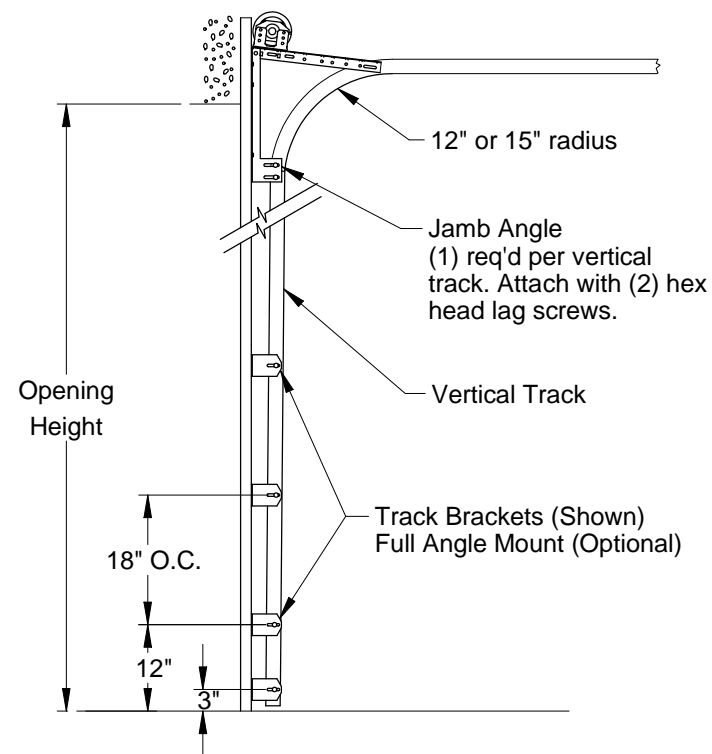
John E. Scates
 2560 King Arthur Blvd, Ste 124-54
 Lewisville, TX 75056
 FL PE #51737
 TX PE #56308-f2203

Scale: None		Title: Spec, Wind Load Aspen Series	
Drawn by: R. Frey		Checked by: G. Wedekind	
Rev. B		Date: 02/15/19	
Description: Removed vent option on sheet 1.		ECO: 7679.04	12/09/19
Description: New release for production.		ECO: 7679.01	02/15/19
Description:		ECO: 7679.01	



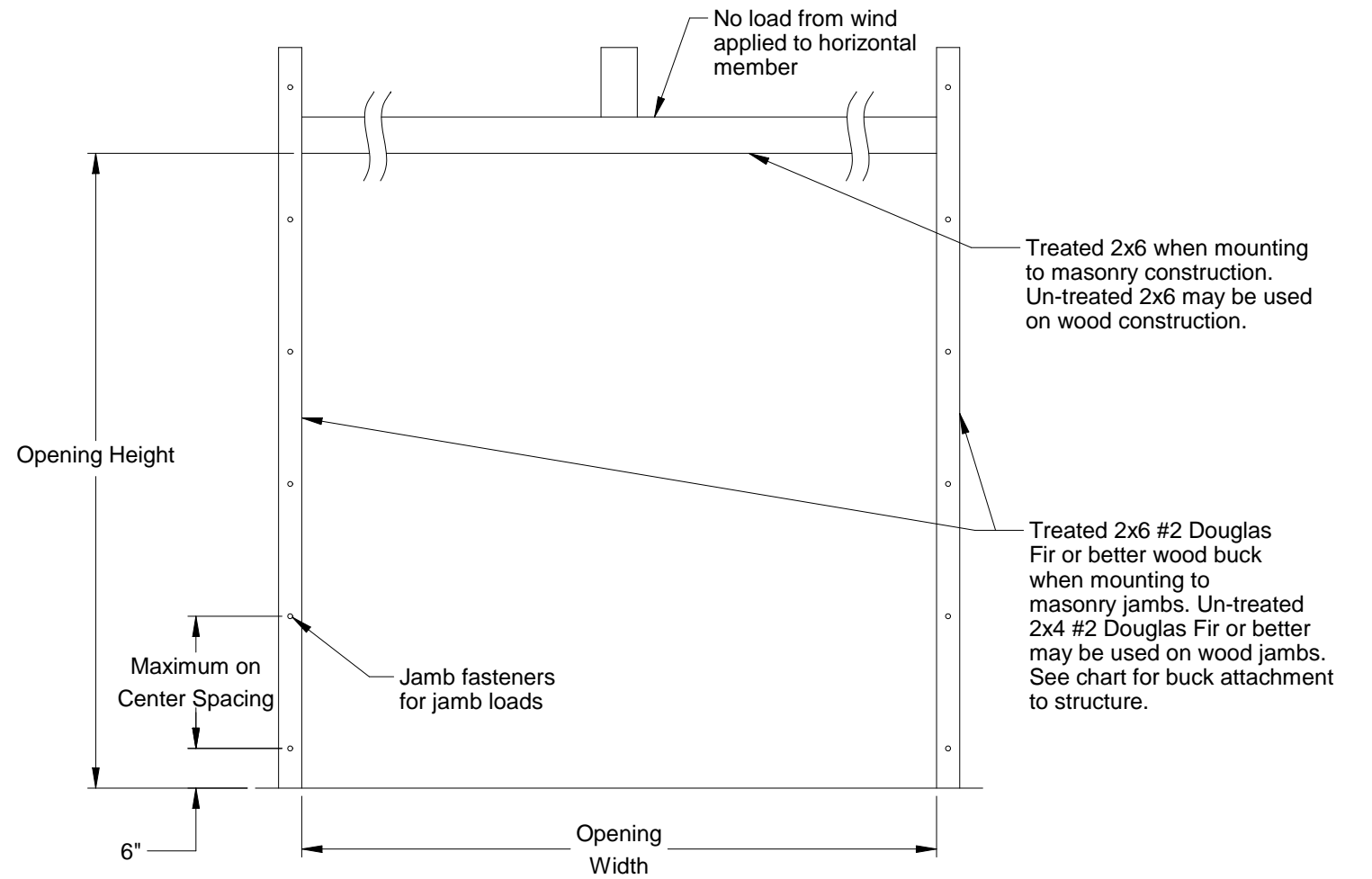
1101 East River Road
Dixon, IL 61021

No. P-2902	Sheet 1 of 3	Rev B
------------	--------------	-------



Typical Track Installation

Normal headroom track shown, low headroom, lift clearance and vertical lift track available

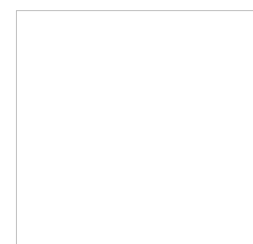


Jamb Attachment Notes:


1. Maximum Positive Load per Jamb = (16'-0" x 45.0 PSF) / 2 = 360 lbs. per foot.
2. Maximum Negative Load per Jamb = (16'-0" x -52.0 PSF) / 2 = 416 lbs. per foot.
3. Design of the supporting structure shall be the sole responsibility of the building designer and shall be designed for the jamb loads listed in notes 1 and 2.
4. Alternate jamb attachments may be used if approved by a registered Professional Engineer.
5. DASMA Technical Data Sheet TDS-161 may be used for alternate jamb attachments.
6. 3/8" diameter lag screws required 1/16" pilot hole and 1-1/2" minimum required distance.

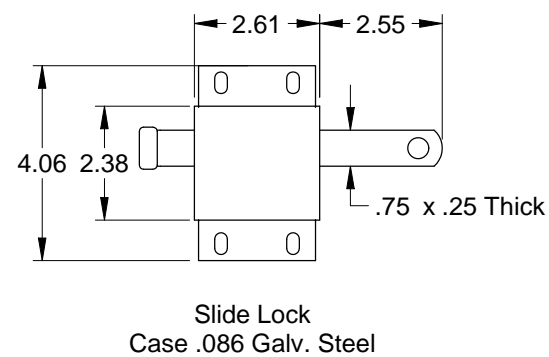
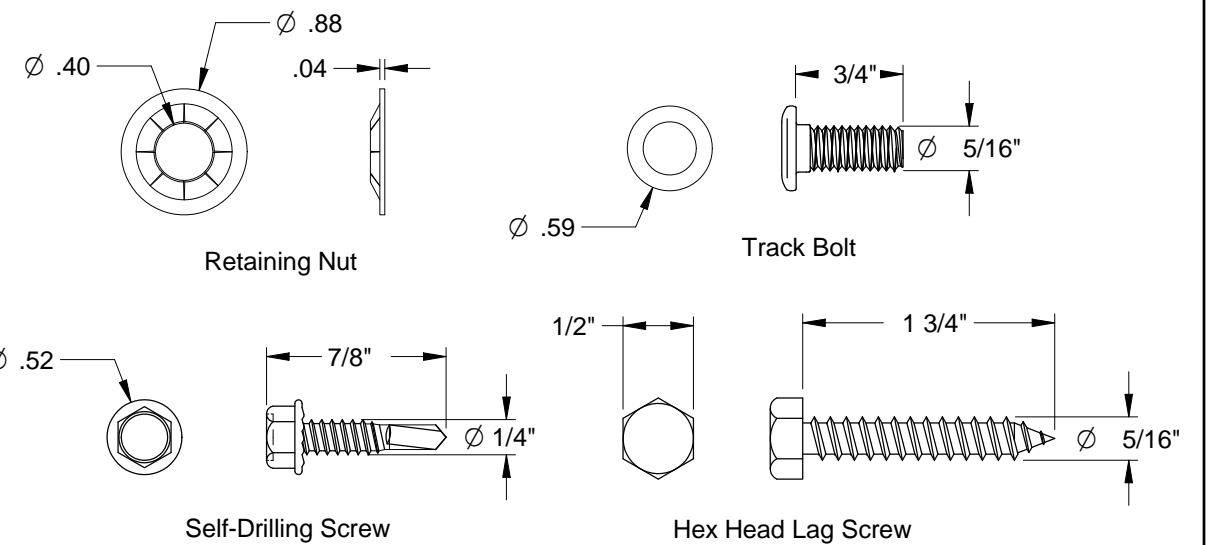
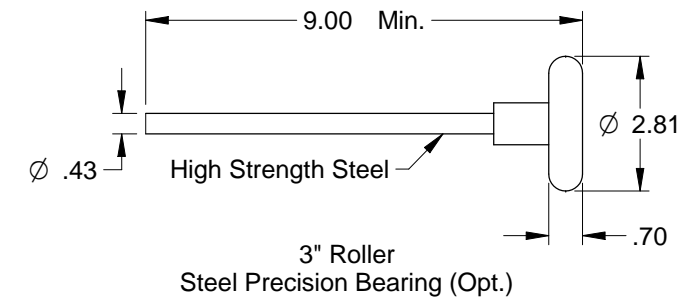
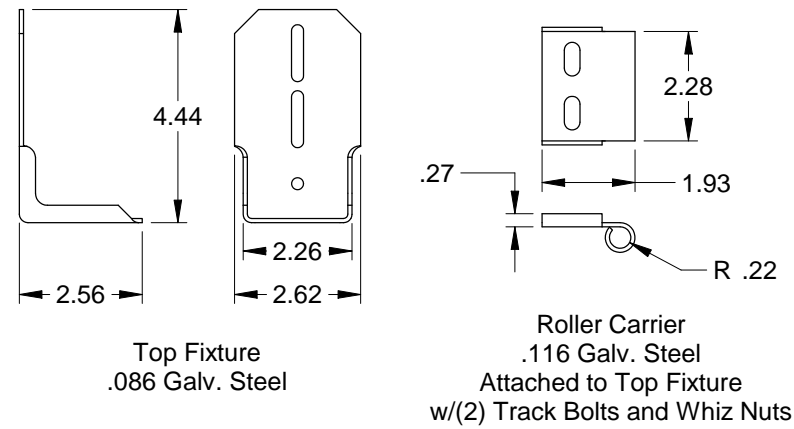
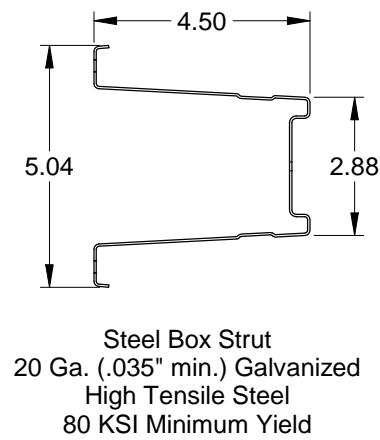
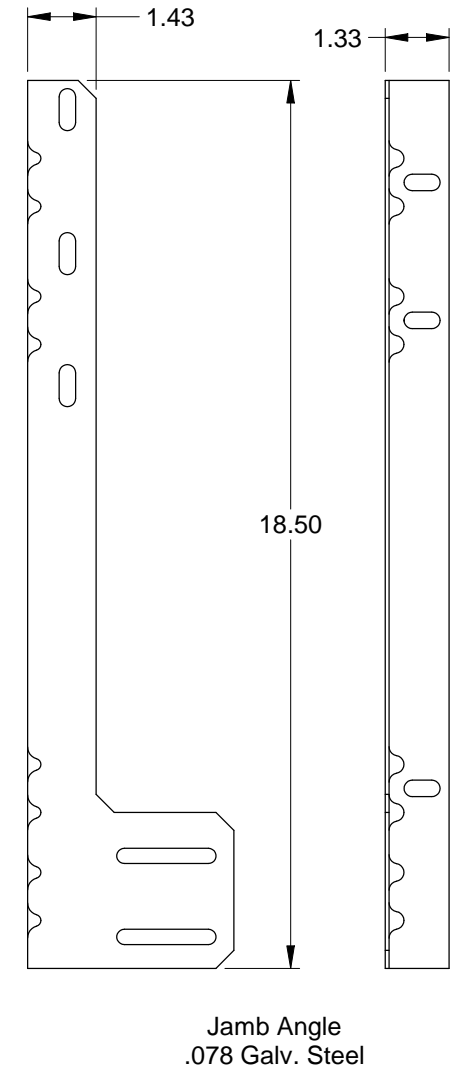
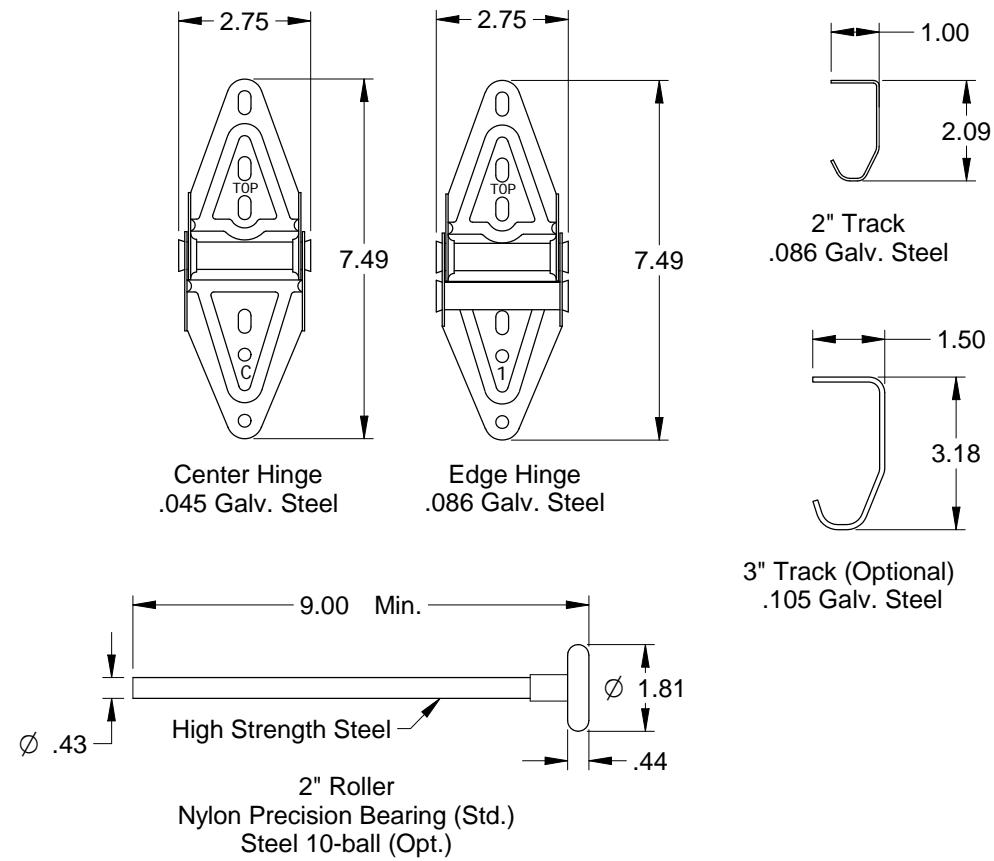
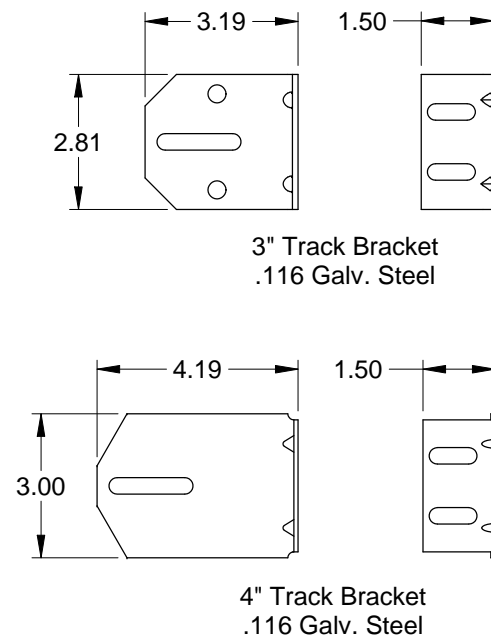
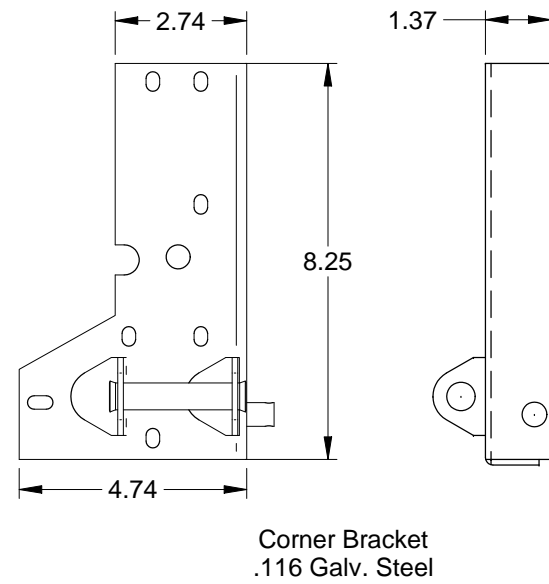
2x6 Attachment to Structure

Structure Type	Fastener Type	Minimum Embedment	Minimum Edge Distance	Minimum on Center Spacing	Maximum on Center Spacing	Allowable Tension Load
2500 PSI Min. Concrete	1/4" Tapcon+ (Plus) with 1-1/8" OD Washer	2"	2.5	6"	17"	526
Southern Pine	3/8" x 3" Lag with 1-1/8" OD Washer	1.50"	1.50"	1.50"	21"	655
Spruce Pine Fir	3/8" x 3" LAG with 1-1/8" OD Washer	1.50"	1.50"	1.50"	16"	482



John E. Scates
 2560 King Arthur Blvd, Ste 124-54
 Lewisville, TX 75056
 FL PE #51737
 TX PE #56308-f2203

Scale: None	 1101 East River Road Dixon, IL 61021	Title: Spec, Wind Load Aspen Series	
Drawn by: R. Frey		No. P-2902	Sheet 2
Checked by: G. Wedekind			
Date: 02/15/19			
ECO: 7679.01			



John E. Scates
2560 King Arthur Blvd, Ste 124-54
Lewisville, TX 75056
FL PE #51737
TX PE #56308-f2203

Scale: None
Drawn by: R. Frey
Checked by: G. Wedekind
Date: 02/15/19
ECO: 7679.01



Title: Spec, Wind Load Aspen Series		
No. P-2902	Sheet 3	Rev B