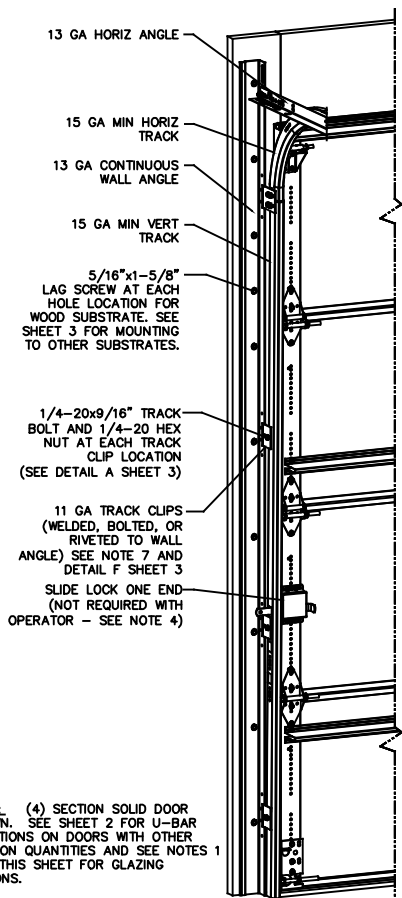


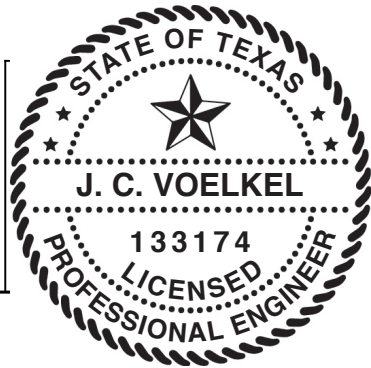
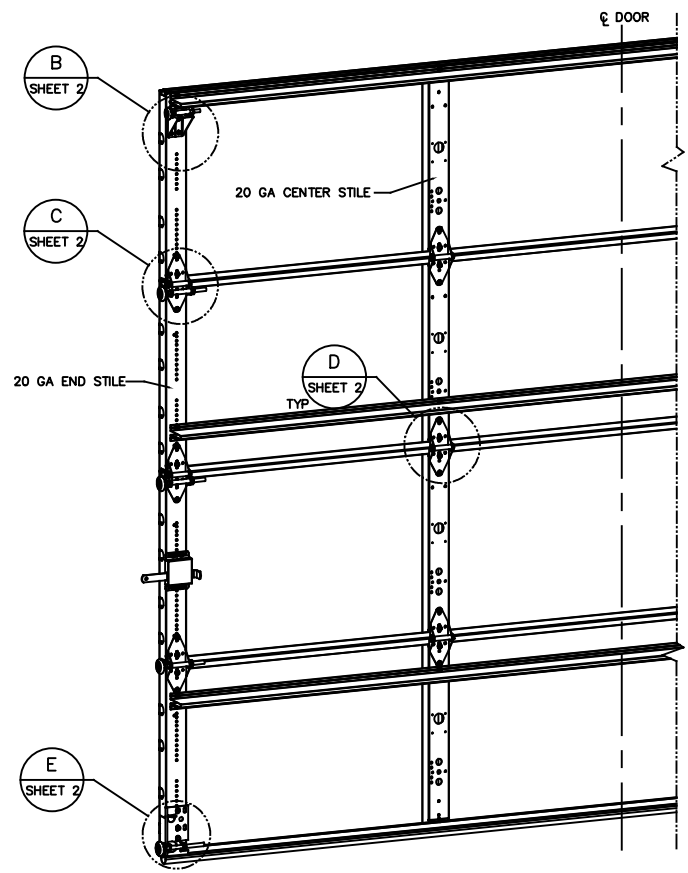
| REVISIONS | | | | |
|-----------|-----|----------------------|---------|----------|
| CR | REV | DESCRIPTION | DATE | APPROVAL |
| VL005 | - | INITIAL DRAWING | 1/14/21 | TLC |
| VL005 | A | ADDED AFV PANEL SIZE | 4/28/21 | TLC |

- NOTES
- STANDARD GLAZING OPTION - .125" MINIMUM DSB GLAZING MEETS UNIFORM STATIC DESIGN PRESSURES SHOWN ON THIS DRAWING. GLAZING SHALL HAVE A MAXIMUM HEIGHT OF 6.70" AND A MAXIMUM LENGTH OF 24.00". GLAZING IS NOT IMPACT RESISTANT AND DOES NOT MEET THE REQUIREMENTS FOR WIND-BORNE DEBRIS REGIONS.
 - ALUMINUM FULL VIEW OPTION - ALUMINUM FULL VIEW SECTION MAY REPLACE ANY SECTION EXCEPT TOP AND BOTTOM PANELS. ALUMINUM FULL VIEW SECTION SHALL HAVE RAILS AND STILES OF EXTRUDED ALUMINUM ALLOY 6063-T6 WITH A 2-1/4" INTRAGRAL FIN AND .125" MINIMUM DSB GLAZING INSTALLED WITH ALUMINUM RETAINERS IN ORDER TO MEET UNIFORM STATIC DESIGN PRESSURES SHOWN ON THIS DRAWING. AFV PANEL SIZE IS 45.5"x21.9" (MAX). GLAZING IS NOT IMPACT RESISTANT AND DOES NOT MEET THE REQUIREMENTS FOR WIND-BORNE DEBRIS REGIONS.
 - MINIMUM OF 1" OVERLAP ON BOTH JAMBS REQUIRED TO MEET NEGATIVE DESIGN PRESSURES.
 - SLIDE LOCK OR OPERATOR REQUIRED.
 - SECTION STEEL TO HAVE THE FOLLOWING MINIMUM THICKNESS:
421, 423 - 20 GA
427, 429 - 24 GA
434, 436 - 25 GA
 - THE DESIGN OF THE SUPPORTING STRUCTURAL ELEMENTS SHALL BE THE RESPONSIBILITY OF THE PROFESSIONAL OF RECORD FOR THE BUILDING OR STRUCTURE AND IN ACCORDANCE WITH CURRENT BUILDING CODES FOR THE LOADS LISTED ON THIS DRAWING.
 - TRACK CLIPS SHALL BE LOCATED WITH CENTERLINE OF BOTTOM CLIP SPACED 10" MAX FROM BOTTOM OF TRACK AND REMAINING TRACK CLIPS SPACED AT 24" O.C. MAX. SPACING BETWEEN TOP TRACK CLIP AND SPLICE PLATE SHALL BE 30" O.C. MAX.
 - WHEN MOUNTING TO WOOD, DOOR JAMB TO BE MINIMUM 2x6 STRUCTURAL GRADE LUMBER. REFER TO JAMB CONNECTION SUPPLEMENT FOR ATTACHMENT TO SUPPORTING STRUCTURE.



NOTE: (4) SECTION SOLID DOOR SHOWN. SEE SHEET 2 FOR U-BAR LOCATIONS ON DOORS WITH OTHER SECTION QUANTITIES AND SEE NOTES 1 & 2 THIS SHEET FOR GLAZING OPTIONS.

| MAX DOOR WIDTH | DOOR HEIGHT | MAX UNIFORM LOAD EACH JAMB (PLF) |
|----------------|-------------|----------------------------------|
| 10'-4" | ALL | +107.6/-121.5 |

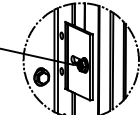


| STATIC PRESSURE RATINGS | APPROVED SIZES |
|-----------------------------------|-------------------------|
| DESIGN PRESSURE(PSF): +20.9/-23.6 | MAX WIDTH: 10'-4" |
| IMPACT/CYCLIC RATED: NO | MAX HEIGHT: 24'-1" |
| | MAX SECTION HEIGHT: 24' |

THE DOORS ARE DESIGNED AND MANUFACTURED TO COMPLY WITH THE 2018 IRC AND THE 2018 IBC.

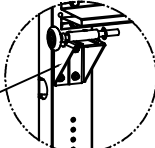
| THESE THINGS AND THIS MARKING REQUIRE THE FOLLOWING INFORMATION IN U.S. CUSTOMARY UNITS | | TOLERANCES UNLESS OTHERWISE SPECIFIED | | FINISH | | MATERIAL | | DATE | |
|---|---------|---------------------------------------|---------------|--------|--------|----------|---------|---------|---------|
| REF DWG | USED ON | HOLE DIAMETER | WHOLE NUMBERS | FINISH | FINISH | DATE | DATE | DATE | DATE |
| | | UNDER .251 +.004/- .003 | ± .25 | N/A | N/A | 1/14/21 | 1/14/21 | 1/14/21 | 1/14/21 |
| | | .251 TO .500 +.006/- .003 | ± .1 | | | | | | |
| | | OVER .500 +.008/- .003 | ± .03 | | | | | | |
| | | FRACTIONS | ± .010 | | | | | | |
| | | | ± 1/16 | | | | | | |
| | | ANGLES | ± .5° | | | | | | |

1/4-20x9/16" TRACK BOLT AND 1/4-20 HEX NUT THROUGH THE SLOT IN THE TRACK AND TRACK CLIP



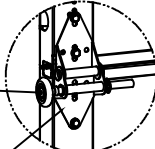
DETAIL A

12 GA COMMERCIAL TOP FRAME BRACKET WITH 13 GA ROLLER CARRIER ATTACHED WITH (4) 1/4-14x7/8" SELF DRILLING CRIMPITTE SCREWS



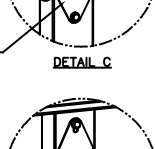
DETAIL B

2" STEEL ROLLER WITH 5-1/8" STEM AND 7/16" PUSHNUT AT EACH ROLLER LOCATION. 1/4" MAX BETWEEN PUSHNUT AND BRACKET OR HINGE



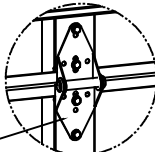
DETAIL C

13 GA WIDE BODY END HINGES EACH ATTACHED WITH (4) 1/4-14x7/8" SELF DRILLING CRIMPITTE SCREWS



SOLID SECTION

14 GA WIDE BODY INTERMEDIATE HINGE ATTACHED WITH (4) 1/4-14x7/8" SELF DRILLING CRIMPITTE SCREWS

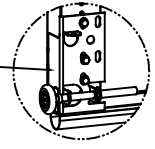


(2) 1/4-14x7/8" SELF DRILLING CRIMPITTE SCREWS
HALF HINGE
(2) 1/4 x 1/2" CARRIAGE BOLTS AND 1/4" FLANGE NUTS

AFV SECTION

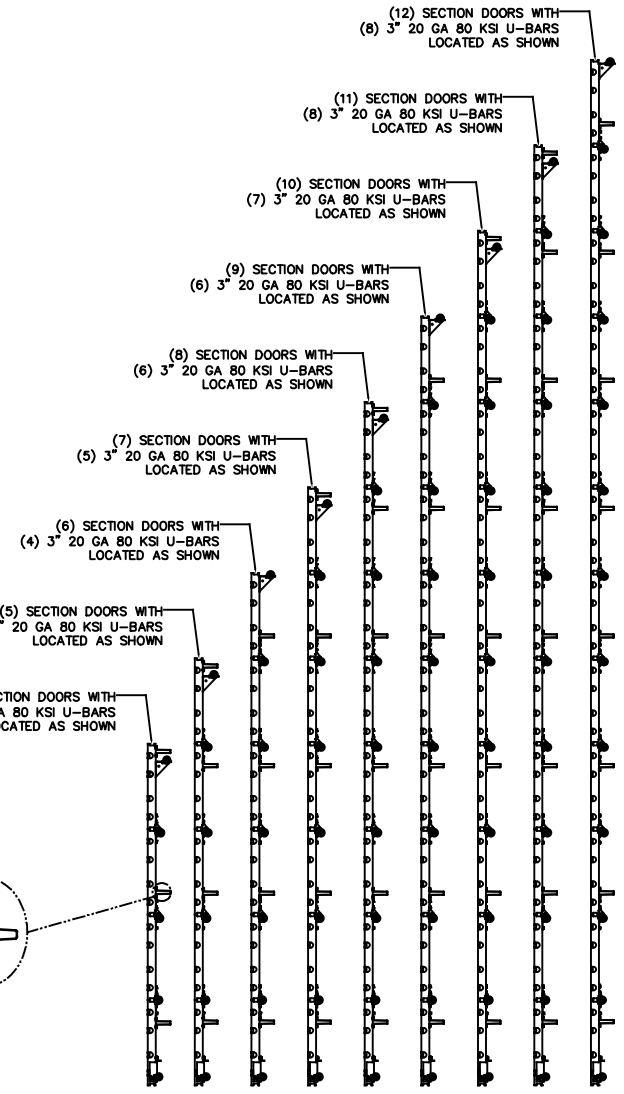
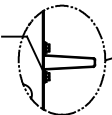
DETAIL D

12 GA BOTTOM BRACKET ATTACHED WITH (3) 1/4-14x7/8" SELF DRILLING CRIMPITTE SCREWS

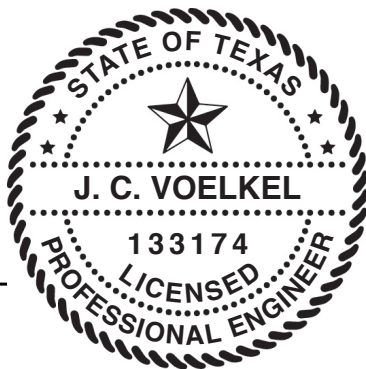


DETAIL E

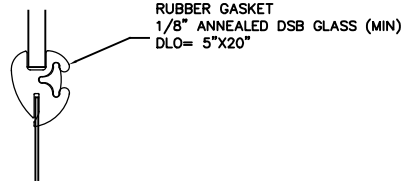
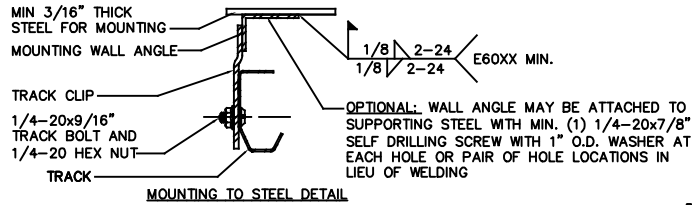
ATTACH U-BARS WITH (2) 1/4-14x7/8" SELF DRILLING CRIMPITTE SCREWS AT ALL STILE LOCATIONS, TYP.



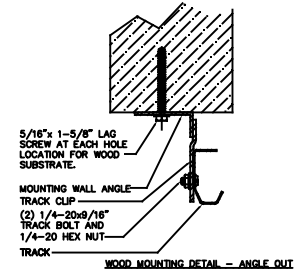
| STATIC PRESSURE RATINGS | APPROVED SIZES |
|-----------------------------------|-------------------------|
| DESIGN PRESSURE(PSF): +20.9/-23.6 | MAX WIDTH: 10'-4" |
| | MAX HEIGHT: 24'-1" |
| IMPACT/CYCLIC RATED: NO | MAX SECTION HEIGHT: 24' |



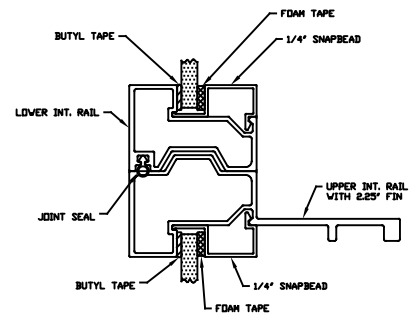
| | | | |
|--|---|------------------------------------|--|
| THE DRAWINGS AND ALL OTHER INFORMATION CONTAINED HEREIN ARE THE CONFIDENTIAL AND PROPRIETARY PROPERTY OF OVERHEAD DOOR CORPORATION AND ITS AFFILIATED COMPANIES. THIS DRAWING AND INFORMATION, IN WHOLE OR IN PART, MAY NOT BE COPIED IN ANY MANNER OR DISCLOSED TO ANYONE WITHOUT THE PRIOR WRITTEN CONSENT OF OVERHEAD DOOR CORPORATION. NO DISCLOSURE OF ANY OF THIS DRAWING OR INFORMATION IS INTENDED TO OPERATE AS A LICENSE OR AUTHORIZATION TO USE IT FOR ANY PURPOSE WITHOUT THE SPECIFIC WRITTEN CONSENT OF OVERHEAD DOOR CORPORATION. | | | |
| | TITLE: OVERHEAD DOOR UNDER 251 +.004/- .003 251 TO 500 +.006/- .003 OVER 500 +.008/- .003 | FINISH: N/A UNIT OF MEASURE: EA | DATE: 1/14/21 DRAWN BY: T CLARK CHECKED BY: J QIAN APPROVED BY: T CLARK |
| | WHOLE NUMBERS: ± .25 .X ± .1 .XX ± .03 .XXX ± .010 ANGLES: ± .5° | MATERIAL: N/A | DATE: 1/8/21 DATE: 4/28/21 |
| REF DWG | USED ON | | DRAWING TITLE: WINDLOAD, OPTION CODE 2073 SERIES 421/423/427/429/434/436, 20.9/-23.6 PSF, 10'-4" MAX DRAWING NUMBER: D-411786 SCALE: N/A SHEET 2 OF 3 |



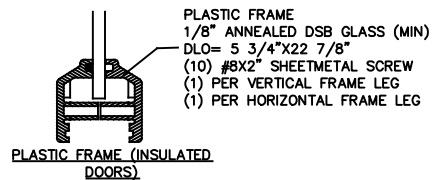
RUBBER FRAME GASKET (NON-INSULATED DOORS)



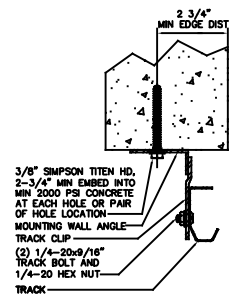
WOOD MOUNTING DETAIL - ANGLE OUT



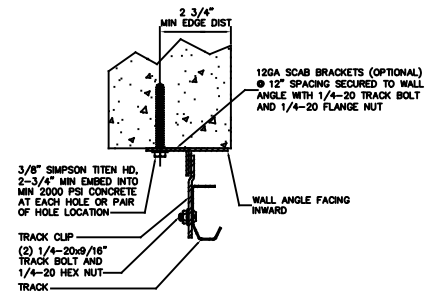
ALUMINUM FULL VIEW FRAME



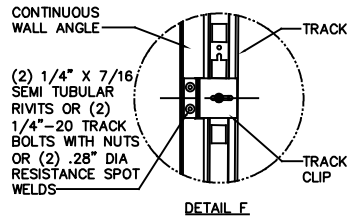
PLASTIC FRAME (INSULATED DOORS)



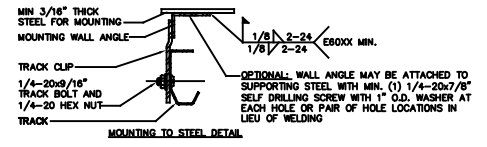
CONCRETE MOUNTING DETAIL - ANGLE OUT



CONCRETE MOUNTING DETAIL - ANGLE IN

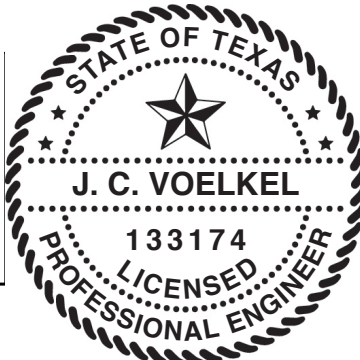


DETAIL F



MOUNTING TO STEEL DETAIL

| STATIC PRESSURE RATINGS | APPROVED SIZES |
|-----------------------------------|-------------------------|
| DESIGN PRESSURE(PSF): +20.9/-23.6 | MAX WIDTH: 10'-4" |
| | MAX HEIGHT: 24'-1" |
| IMPACT/CYCLIC RATED: NO | MAX SECTION HEIGHT: 24' |



| | | | |
|--|---|--|------------------------------------|
| THE DRAWINGS AND ALL OTHER INFORMATION CONTAINED HEREIN ARE THE CONFIDENTIAL AND PROPRIETARY PROPERTY OF OVERHEAD DOOR CORPORATION AND ITS AFFILIATED COMPANIES. THIS DRAWING AND INFORMATION, IN WHOLE OR IN PART, MAY NOT BE COPIED IN ANY MANNER OR DISCLOSED TO ANYONE WITHOUT THE PRIOR WRITTEN CONSENT OF OVERHEAD DOOR CORPORATION. NO DISCLOSURE OF ANY OF THIS DRAWING OR INFORMATION IS INTENDED TO OPERATE AS A LICENSE OR AUTHORIZATION TO USE IT FOR ANY PURPOSE WITHOUT THE SPECIFIC WRITTEN CONSENT OF OVERHEAD DOOR CORPORATION. | | | |
| | HOLE DIAMETER UNDER .251 +.004/- .003 .251 TO .500 +.006/- .003 OVER .500 +.008/- .003 | WHOLE NUMBERS: ± .25 X ± .1 XX ± .03 XXX ± .010 FRACTIONS ± 1/16 | FINISH: N/A UNIT OF MEASURE: EA |
| | REF DWG USED ON: _____ | | |
| DATE: 4/28/21 | | DRAWING TITLE: JINDL/DAD, OPTION CODE 2073 SERIES 421/423/427/429/434/436, 20.9/-23.6 PSF, 10'-4" MAX | |
| DRAWN BY: T CLARK | | CHECKED BY: J QIAN | |
| APPROVED BY: T CLARK | | DATE: 4/28/21 | |
| MATERIAL: N/A | | SIGNATURE NUMBER: D-411786 | |
| SCALE: N/A | | SHEET 3 OF 3 | |