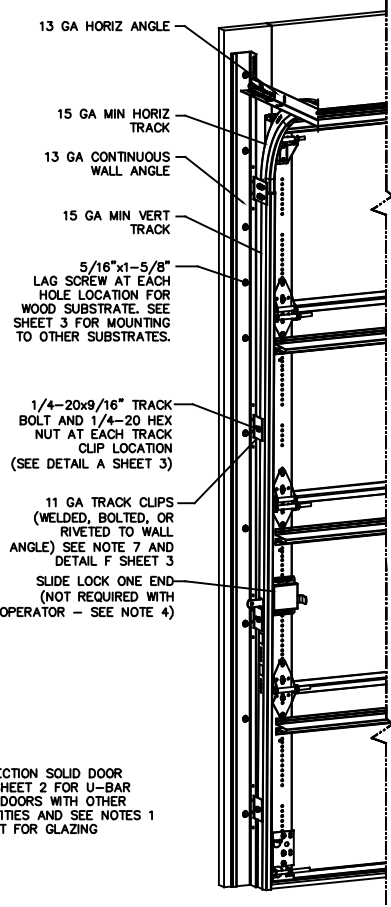


NOTES

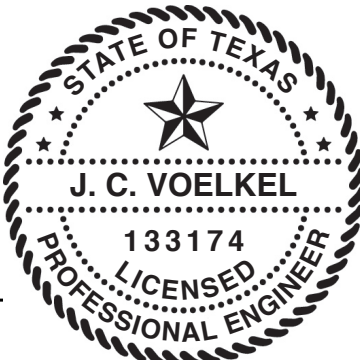
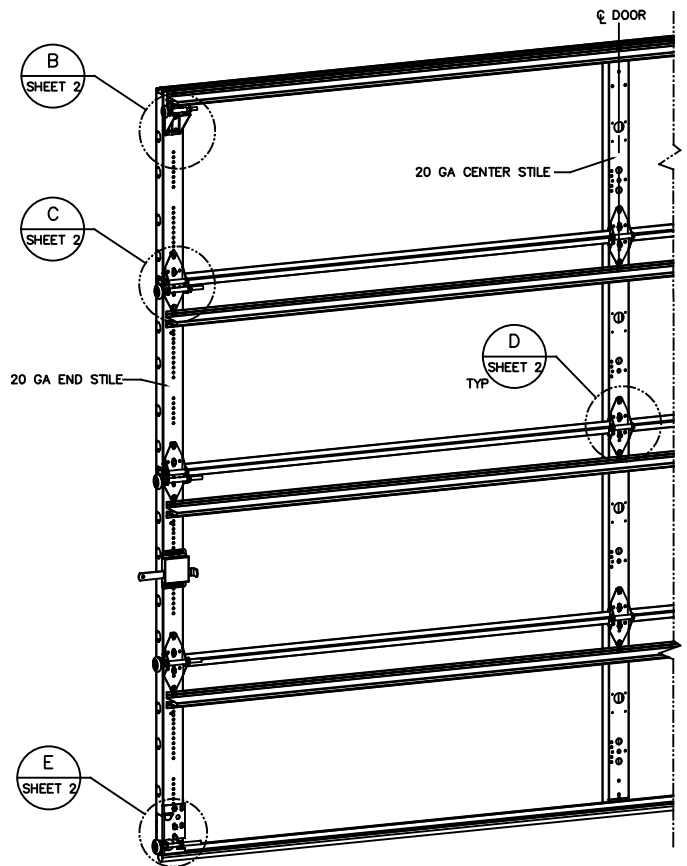
- STANDARD GLAZING OPTION - .125" MINIMUM DSB GLAZING MEETS UNIFORM STATIC DESIGN PRESSURES SHOWN ON THIS DRAWING. GLAZING SHALL HAVE A MAXIMUM HEIGHT OF 6.70" AND A MAXIMUM LENGTH OF 24.00". GLAZING IS NOT IMPACT RESISTANT AND DOES NOT MEET THE REQUIREMENTS FOR WIND-BORNE DEBRIS REGIONS.
- ALUMINUM FULL VIEW OPTION - ALUMINUM FULL VIEW SECTION MAY REPLACE ANY SECTION EXCEPT TOP AND BOTTOM PANELS. ALUMINUM FULL VIEW SECTION SHALL HAVE RAILS AND STILES OF EXTRUDED ALUMINUM ALLOY 6063-T6 WITH A 2-1/4" INTEGRAL FIN AND .125" MINIMUM DSB GLAZING INSTALLED WITH ALUMINUM RETAINERS IN ORDER TO MEET UNIFORM STATIC DESIGN PRESSURES SHOWN ON THIS DRAWING. AFV PANEL SIZE IS 57.5"x21.9" (MAX). GLAZING IS NOT IMPACT RESISTANT AND DOES NOT MEET THE REQUIREMENTS FOR WIND-BORNE DEBRIS REGIONS.
- MINIMUM OF 1" OVERLAP ON BOTH JAMBS REQUIRED TO MEET NEGATIVE DESIGN PRESSURES.
- SLIDE LOCK OR OPERATOR REQUIRED.
- SECTION STEEL TO HAVE THE FOLLOWING MINIMUM THICKNESS:
421, 423 - 20 GA
427, 429 - 24 GA
434, 436 - 25 GA
- THE DESIGN OF THE SUPPORTING STRUCTURAL ELEMENTS SHALL BE THE RESPONSIBILITY OF THE PROFESSIONAL OF RECORD FOR THE BUILDING OR STRUCTURE AND IN ACCORDANCE WITH CURRENT BUILDING CODES FOR THE LOADS LISTED ON THIS DRAWING.
- TRACK CLIPS SHALL BE LOCATED WITH CENTERLINE OF BOTTOM CLIP SPACED 10" MAX FROM BOTTOM OF TRACK AND REMAINING TRACK CLIPS SPACED AT 24" O.C. MAX. SPACING BETWEEN TOP TRACK CLIP AND SPLICE PLATE SHALL BE 30" O.C. MAX.
- WHEN MOUNTING TO WOOD, DOOR JAMB TO BE MINIMUM 2x6 STRUCTURAL GRADE LUMBER. REFER TO JAMB CONNECTION SUPPLEMENT FOR ATTACHMENT TO SUPPORTING STRUCTURE.



NOTE: (4) SECTION SOLID DOOR SHOWN. SEE SHEET 2 FOR U-BAR LOCATIONS ON DOORS WITH OTHER SECTION QUANTITIES AND SEE NOTES 1 & 2 THIS SHEET FOR GLAZING OPTIONS.

SUPERIMPOSED DESIGN PRESSURE LOADS ON SUPPORTING STRUCTURE		
MAX DOOR WIDTH	DOOR HEIGHT	MAX UNIFORM LOAD EACH JAMB (PLF)
10'-4"	ALL	+87.5/-99.9

REVISIONS				
CR	REV	DESCRIPTION	DATE	APPROVAL
VL005	-	INITIAL DRAWING	1/14/21	TLC
VL005	A	ADDED AFV PANEL SIZE	4/28/21	TLC

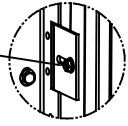


THE DOORS ARE DESIGNED AND MANUFACTURED TO COMPLY WITH THE 2018 IRC AND THE 2018 IBC.

STATIC PRESSURE RATINGS	APPROVED SIZES
DESIGN PRESSURE(PSF): +17.0/-19.4	MAX WIDTH: 10'-4"
	MAX HEIGHT: 24'-1"
IMPACT/CYCLIC RATED: NO	MAX SECTION HEIGHT: 24'

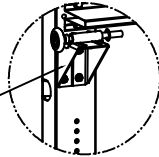
THESE DOORS AND THIS INFORMATION ARE THE PROPERTY OF OVERHEAD DOOR CORPORATION. NO DISCLOSURE OF ANY OF THIS DRAWING OR INFORMATION IS INTENDED TO OPERATE AS A LICENSE OR AUTHORIZATION TO USE IT FOR ANY PURPOSE WITHOUT THE SPECIFIC WRITTEN CONSENT OF OVERHEAD DOOR CORPORATION.		TELEPHONES UNLESS OTHERWISE SPECIFIED		FINISH		The Genuine. The Original. LEVETTESVILLE, TEXAS		DATE		DRAWING TITLE	
REF DWG	USED ON	HOLE DIAMETER UNDER .251 +.004/- .003 .251 TO .500 +.006/- .003 OVER .500 +.008/- .003	WHOLE NUMBERS: ± .25 X ± .1 XX ± .03 XXX ± .010 ANGLES: ± .5°	N/A	N/A	N/A	N/A	1/14/21	1/8/21	4/28/21	WINDLOAD, OPTION CODE 2072 SERIES 421/423/427/429/434/436, 17.0/-19.4 PSF, 10'-4" MAX
		FRACTIONS ± 1/16		UNIT OF MEASURE EA	N/A			DRAWN BY T CLARK	CHECKED BY J QIAN	APPROVED BY T CLARK	DRAWING NUMBER D-411785
											SCALE: N/A SHEET 1 OF 3

1/4-20x9/16" TRACK BOLT AND 1/4-20 HEX NUT THROUGH THE SLOT IN THE TRACK AND TRACK CLIP



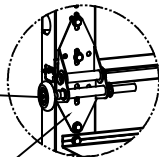
DETAIL A

12 GA COMMERCIAL TOP FRAME BRACKET WITH 13 GA ROLLER CARRIER ATTACHED WITH (4) 1/4-14x7/8" SELF DRILLING CRIMPITTE SCREWS



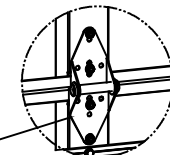
DETAIL B

2" STEEL ROLLER WITH 5-1/8" STEM AND 7/16" PUSHNUT AT EACH ROLLER LOCATION. 1/4" MAX BETWEEN PUSHNUT AND BRACKET OR HINGE

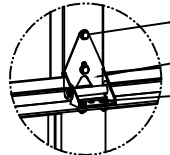


DETAIL C

14 GA WIDE BODY END HINGE TO ATTACH SECTIONS ONE AND TWO. 13 GA WIDE BODY END HINGE TO ATTACH REMAINING SECTIONS. FOR ALL, ATTACH WITH (4) 1/4-14x7/8" SELF DRILLING CRIMPITTE SCREWS



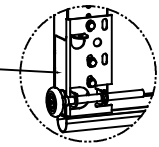
SOLID SECTION



AFV SECTION

DETAIL D

14 GA WIDE BODY INTERMEDIATE HINGE ATTACHED WITH (4) 1/4-14x7/8" SELF DRILLING CRIMPITTE SCREWS

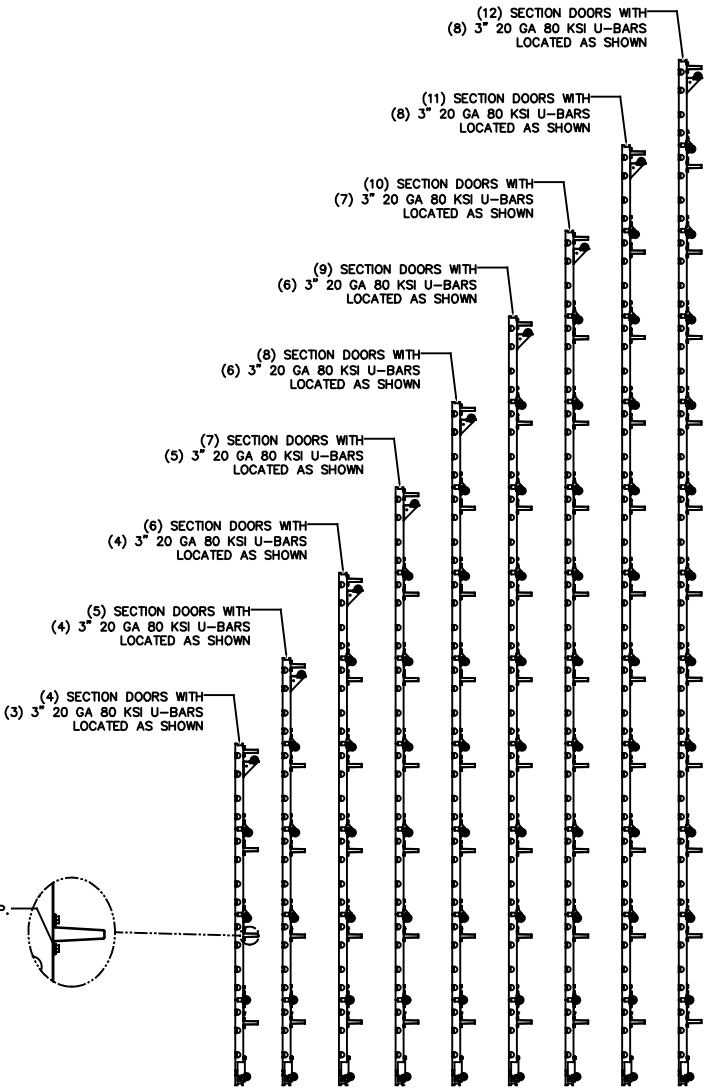


DETAIL E

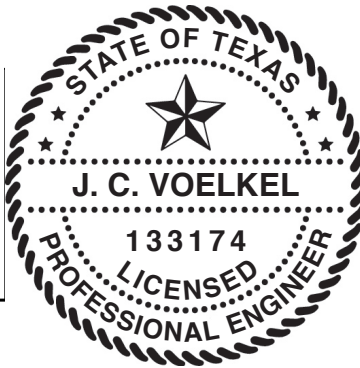
(2) 1/4-14x7/8" SELF DRILLING CRIMPITTE SCREWS
HALF HINGE
(2) 1/4 x 1/2" CARRIAGE BOLTS AND 1/4" FLANGE NUTS

12 GA BOTTOM BRACKET ATTACHED WITH (3) 1/4-14x7/8" SELF DRILLING CRIMPITTE SCREWS

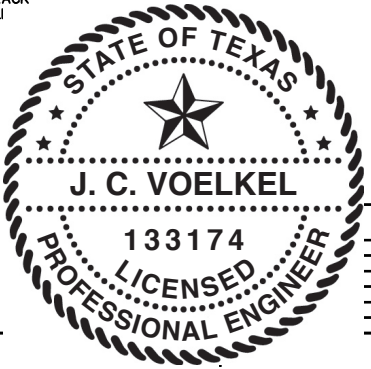
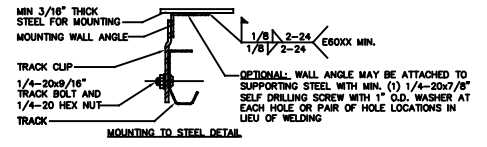
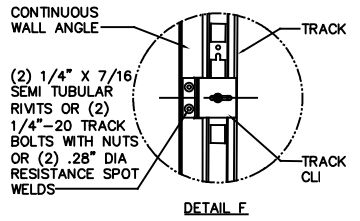
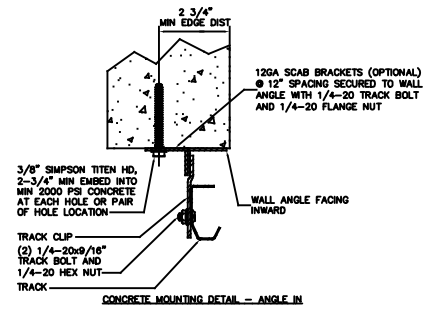
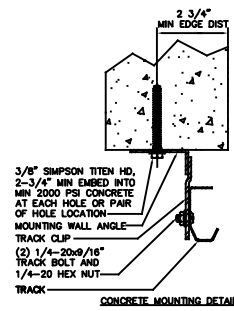
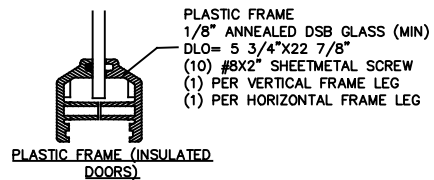
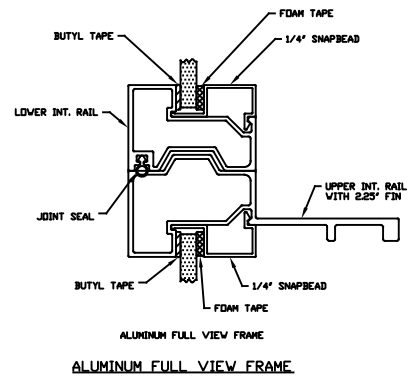
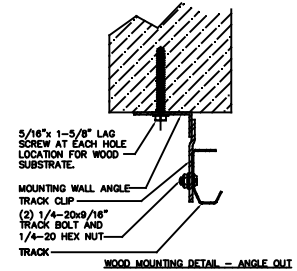
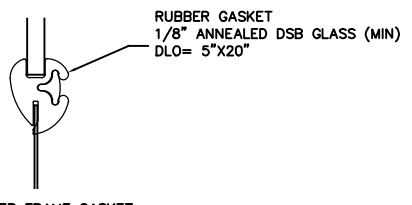
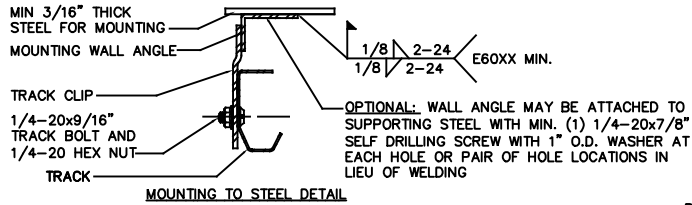
ATTACH U-BARS WITH (2) 1/4-14x7/8" SELF DRILLING CRIMPITTE SCREWS AT ALL STILE LOCATIONS, TYP.



STATIC PRESSURE RATINGS	APPROVED SIZES
DESIGN PRESSURE(PSF): +17.0/-19.4	MAX WIDTH: 10'-4"
	MAX HEIGHT: 24'-1"
IMPACT/CYCLIC RATED: NO	MAX SECTION HEIGHT: 24'



THE DRAWINGS AND ALL OTHER INFORMATION CONTAINED HEREIN ARE THE CONFIDENTIAL AND PROPRIETARY PROPERTY OF OVERHEAD DOOR CORPORATION AND ITS AFFILIATED COMPANIES. THIS DRAWING AND INFORMATION, IN WHOLE OR IN PART, MAY NOT BE COPIED IN ANY MANNER OR DISCLOSED TO ANYONE WITHOUT THE PRIOR WRITTEN CONSENT OF OVERHEAD DOOR CORPORATION. NO DISCLOSURE OF ANY OF THIS DRAWING OR INFORMATION IS INTENDED TO OPERATE AS A LICENSE OR AUTHORIZATION TO USE IT FOR ANY PURPOSE WITHOUT THE SPECIFIC WRITTEN CONSENT OF OVERHEAD DOOR CORPORATION.			
	HOLE DIAMETER UNDER .251 +.004/- .003 .251 TO .500 +.006/- .003 OVER .500 +.008/- .003	FINISH N/A	MATERIAL N/A
	WHOLE NUMBERS: ± .25 .X ± .1 .XX ± .03 .XXX ± .010 ANGLES: ± .5°	UNIT OF MEASURE EA	LEVYVILLE, TEXAS DATE: 1/14/21 DRAWN BY: T CLARK CHECKED BY: J QIAN APPROVED BY: T CLARK DATE: 4/28/21
REF DWG	USED ON	4	3
		2	1
		DRAWING TITLE: WINDLOAD, OPTION CODE 2072 SERIES 421/423/427/429/434/436, 17.0/-19.4 PSF, 10'-4" MAX DRAWING NUMBER: D-411785 SCALE: N/A SHEET 2 OF 3	



STATIC PRESSURE RATINGS	APPROVED SIZES
DESIGN PRESSURE(PSF): +17.0/-19.4	MAX WIDTH: 10'-4"
	MAX HEIGHT: 24'-1"
IMPACT/CYCLIC RATED: NO	MAX SECTION HEIGHT: 24'

TOLERANCES UNLESS OTHERWISE SPECIFIED		FINISH	DATE	
HOLE DIAMETER	WHOLE NUMBERS: ± .25	N/A	DATE	DRAWING TITLE
UNDER .251 +.004/- .003	FRACTIONS: ± .1		1/14/21	VINDLAD, OPTION CODE 2072
.251 TO .500 +.006/- .003	ANGLES: ± .5°			SERIES 421/423/427/429/434/436,
OVER .500 +.008/- .003				17.0/-19.4 PSF, 10'-4" MAX
APPROXIMATE TOLERANCES IN U.S. CUSTOMARY UNITS				
REF DWG	USED ON	UNIT OF MEASURE	APPROVED BY	DRAWING NUMBER
		EA	T CLARK	D-411785
			DATE	SCALE
			4/28/21	N/A
				SHEET 3 OF 3