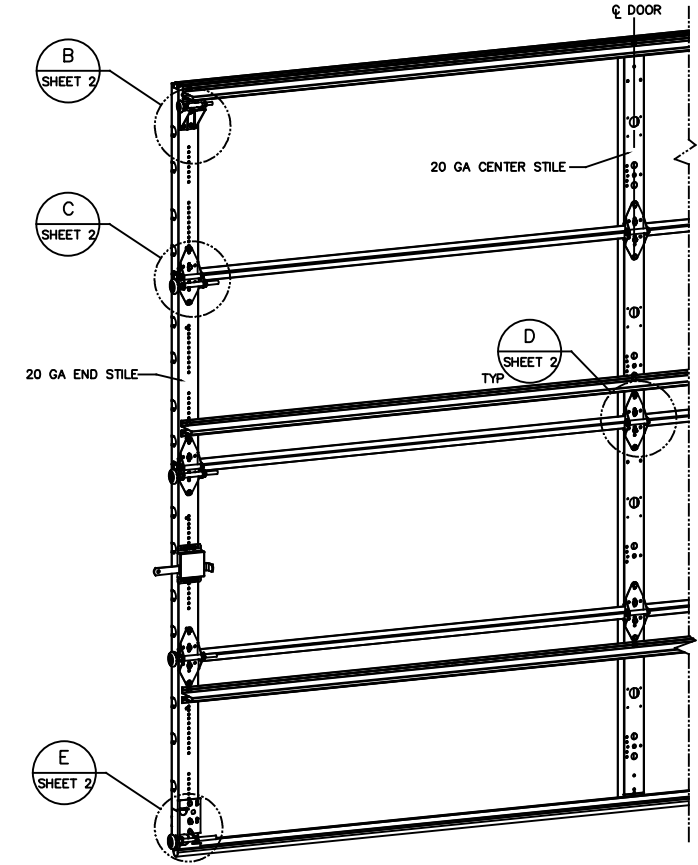
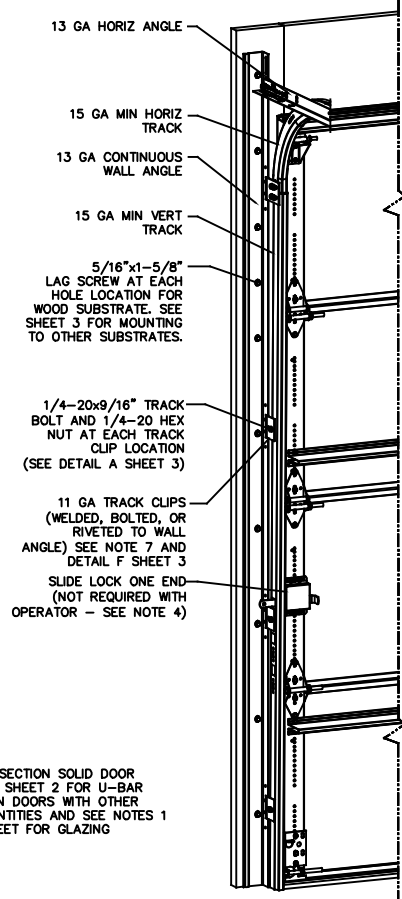


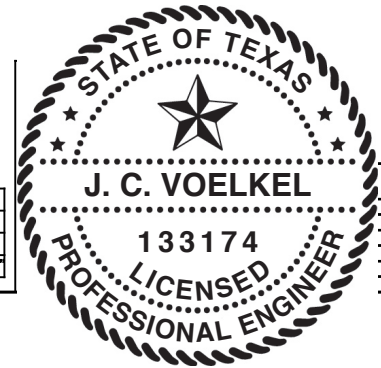
REVISIONS				
OR	REV	DESCRIPTION	DATE	APPROVAL
	VL005	- INITIAL DRAWING	1/14/21	TLC
	VL005	A ADDED AFV PANEL SIZE	4/28/21	TLC

- NOTES**
- STANDARD GLAZING OPTION - .125" MINIMUM DSB GLAZING MEETS UNIFORM STATIC DESIGN PRESSURES SHOWN ON THIS DRAWING. GLAZING SHALL HAVE A MAXIMUM HEIGHT OF 6.70" AND A MAXIMUM LENGTH OF 24.00". GLAZING IS NOT IMPACT RESISTANT AND DOES NOT MEET THE REQUIREMENTS FOR WIND-BORNE DEBRIS REGIONS.
 - ALUMINUM FULL VIEW OPTION - ALUMINUM FULL VIEW SECTION MAY REPLACE ANY SECTION EXCEPT TOP AND BOTTOM PANELS. ALUMINUM FULL VIEW SECTION SHALL HAVE RAILS AND STILES OF EXTRUDED ALUMINUM ALLOY 6063-T6 WITH A 2-1/4" INTEGRAL FIN AND .125" MINIMUM DSB GLAZING INSTALLED WITH ALUMINUM RETAINERS IN ORDER TO MEET UNIFORM STATIC DESIGN PRESSURES SHOWN ON THIS DRAWING. AFV PANEL SIZE IS 57.5"x21.9" (MAX). GLAZING IS NOT IMPACT RESISTANT AND DOES NOT MEET THE REQUIREMENTS FOR WIND-BORNE DEBRIS REGIONS.
 - MINIMUM OF 1" OVERLAP ON BOTH JAMBS REQUIRED TO MEET NEGATIVE DESIGN PRESSURES.
 - SLIDE LOCK OR OPERATOR REQUIRED.
 - SECTION STEEL TO HAVE THE FOLLOWING MINIMUM THICKNESS:
421, 423 - 20 GA
427, 429 - 24 GA
434, 436 - 25 GA
 - THE DESIGN OF THE SUPPORTING STRUCTURAL ELEMENTS SHALL BE THE RESPONSIBILITY OF THE PROFESSIONAL OF RECORD FOR THE BUILDING OR STRUCTURE AND IN ACCORDANCE WITH CURRENT BUILDING CODES FOR THE LOADS LISTED ON THIS DRAWING.
 - TRACK CLIPS SHALL BE LOCATED WITH CENTERLINE OF BOTTOM CLIP SPACED 10" MAX FROM BOTTOM OF TRACK AND REMAINING TRACK CLIPS SPACED AT 24" O.C. MAX. SPACING BETWEEN TOP TRACK CLIP AND SPLICE PLATE SHALL BE 30" O.C. MAX.
 - WHEN MOUNTING TO WOOD, DOOR JAMB TO BE MINIMUM 2x6 STRUCTURAL GRADE LUMBER. REFER TO JAMB CONNECTION SUPPLEMENT FOR ATTACHMENT TO SUPPORTING STRUCTURE.



NOTE: (4) SECTION SOLID DOOR SHOWN. SEE SHEET 2 FOR U-BAR LOCATIONS ON DOORS WITH OTHER SECTION QUANTITIES AND SEE NOTES 1 & 2 THIS SHEET FOR GLAZING OPTIONS.

SUPERIMPOSED DESIGN PRESSURE LOADS ON SUPPORTING STRUCTURE		
MAX DOOR WIDTH	DOOR HEIGHT	MAX UNIFORM LOAD EACH JAMB (PLF)
10'-4"	ALL	+81.9/-93.7

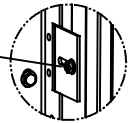


THE DOORS ARE DESIGNED AND MANUFACTURED TO COMPLY WITH THE 2018 IRC AND THE 2018 IBC.

STATIC PRESSURE RATINGS	APPROVED SIZES
DESIGN PRESSURE(PSF): +15.9/-18.2	MAX WIDTH: 10'-4"
IMPACT/CYCLIC RATED: NO	MAX HEIGHT: 24'-1"
	MAX SECTION HEIGHT: 24'

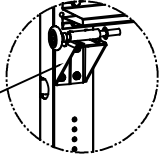
THESE DIMENSIONS ARE IN U.S. CUSTOMARY UNITS		TOLERANCES UNLESS OTHERWISE SPECIFIED		FINISH	The Genuine. The Original. LEVEDEVILLE, TEXAS		DATE	DRAWING TITLE
HOLE DIAMETER	UNDER .251 +.004/- .003	WHOLE NUMBERS	± .25	N/A	DATE	1/14/21	WINDLOAD, OPTION CODE 2071	
OVER .500	+.008/- .003	FRACTIONS	± .1	UNIT OF MEASURE	CHECKED BY	1/8/21	SERIES 421/423/427/429/434/436, 15.9/-18.2 PSF, 10'-4" MAX	
ANGLES	± 1/16	DECIMALS	± .01	MATERIAL	APPROVED BY	4/28/21	DRAWING NUMBER	
			± .03	N/A	T CLARK		D-411784	
			± .00				SCALE: N/A	
			± .5°				SHEET 1 OF 3	

1/4-20x9/16" TRACK BOLT AND 1/4-20 HEX NUT THROUGH THE SLOT IN THE TRACK AND TRACK CLIP



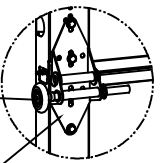
DETAIL A

12 GA COMMERCIAL TOP FRAME BRACKET WITH 13 GA ROLLER CARRIER ATTACHED WITH (4) 1/4-14x7/8" SELF DRILLING CRIMPITITE SCREWS



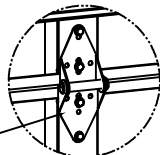
DETAIL B

2" STEEL ROLLER WITH 5-1/8" STEM AND 7/16" PUSHNUT AT EACH ROLLER LOCATION. 1/4" MAX BETWEEN PUSHNUT AND BRACKET OR HINGE

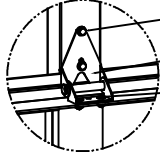


DETAIL C

14 GA WIDE BODY END HINGE TO ATTACH SECTIONS ONE AND TWO. 13 GA WIDE BODY END HINGE TO ATTACH REMAINING SECTIONS. FOR ALL, ATTACH WITH (4) 1/4-14x7/8" SELF DRILLING CRIMPITITE SCREWS



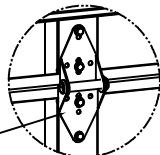
SOLID SECTION



AFV SECTION

DETAIL D

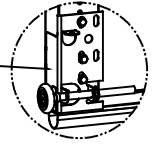
14 GA WIDE BODY INTERMEDIATE HINGE ATTACHED WITH (4) 1/4-14x7/8" SELF DRILLING CRIMPITITE SCREWS



SOLID SECTION

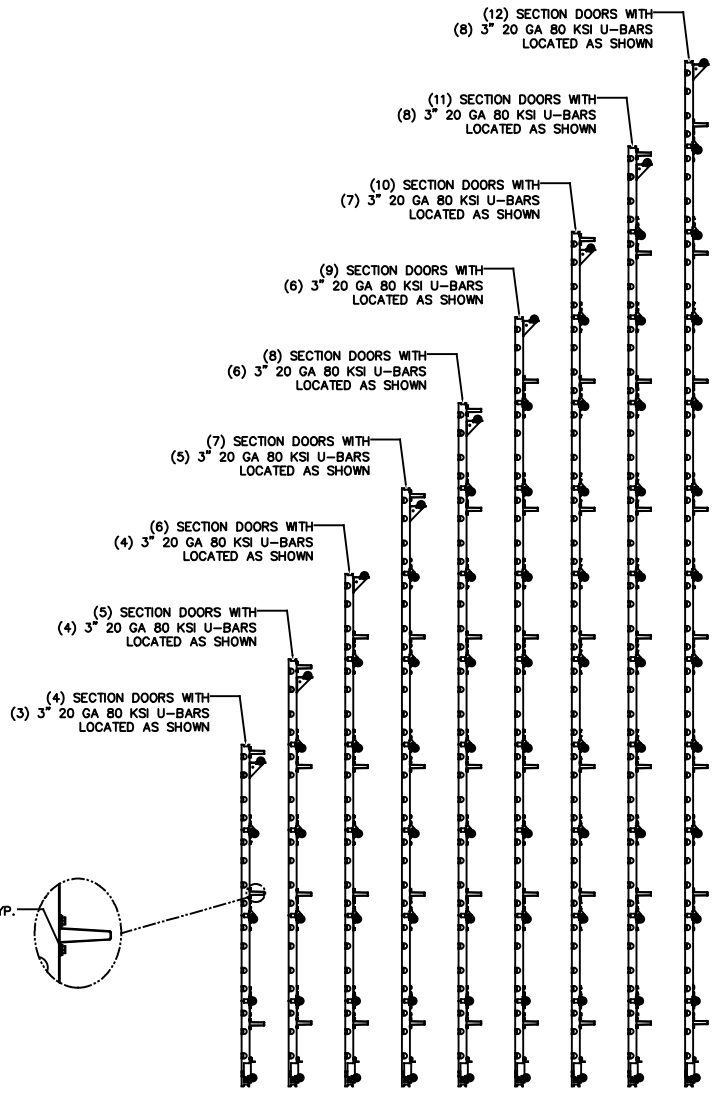
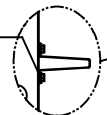
(2) 1/4-14x7/8" SELF DRILLING CRIMPITITE SCREWS
HALF HINGE
(2) 1/4 x 1/2" CARRIAGE BOLTS AND 1/4" FLANGE NUTS

12 GA BOTTOM BRACKET ATTACHED WITH (3) 1/4-14x7/8" SELF DRILLING CRIMPITITE SCREWS

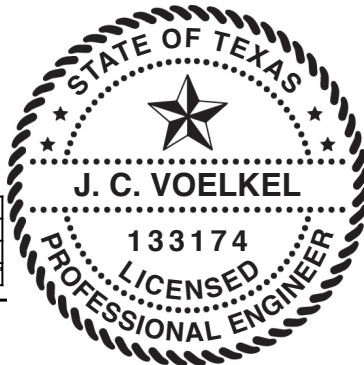


DETAIL E

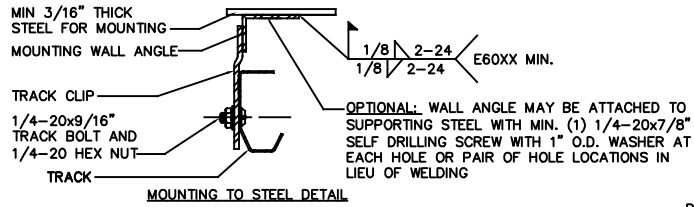
ATTACH U-BARS WITH (2) 1/4-14x7/8" SELF DRILLING CRIMPITITE SCREWS AT ALL STILE LOCATIONS, TYP.



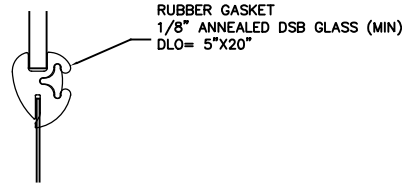
STATIC PRESSURE RATINGS	APPROVED SIZES
DESIGN PRESSURE(PSF): +15.9/-18.2	MAX WIDTH: 10'-4"
	MAX HEIGHT: 24'-1"
IMPACT/CYCLIC RATED: NO	MAX SECTION HEIGHT: 24'



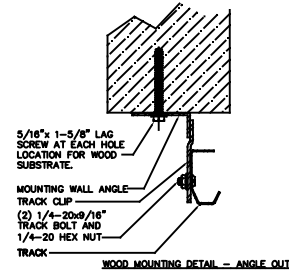
THE DRAWINGS AND ALL OTHER INFORMATION CONTAINED HEREIN ARE THE CONFIDENTIAL AND PROPRIETARY PROPERTY OF OVERHEAD DOOR CORPORATION AND ITS AFFILIATED COMPANIES. THIS DRAWING AND INFORMATION, IN WHOLE OR IN PART, MAY NOT BE COPIED IN ANY MANNER OR DISCLOSED TO ANYONE WITHOUT THE PRIOR WRITTEN CONSENT OF OVERHEAD DOOR CORPORATION. NO DISCLOSURE OF ANY OF THIS DRAWING OR INFORMATION IS INTENDED TO OPERATE AS A LICENSE OR AUTHORIZATION TO USE IT FOR ANY PURPOSE WITHOUT THE SPECIFIC WRITTEN CONSENT OF OVERHEAD DOOR CORPORATION.			
	TOLERANCES UNLESS OTHERWISE SPECIFIED DIM. DIAMETER UNDER .251 +.004/- .003 .251 TO .500 +.006/- .003 OVER .500 +.008/- .003	FINISH N/A	DATE 1/14/21
	FRACTIONS ± 1/16	WHOLE NUMBERS: ± .25 .X ± .1 .XX ± .03 .XXX ± .010 ANGLES: ± .5°	UNIT OF MEASURE EA
REF DWG	USED ON	MATERIAL N/A	CHECKED BY T CLARK 1/8/21 APPROVED BY T CLARK 4/28/21
			SHEET 2 OF 3



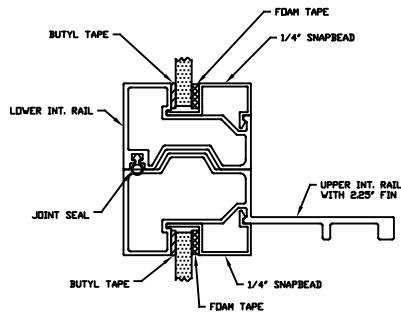
MOUNTING TO STEEL DETAIL



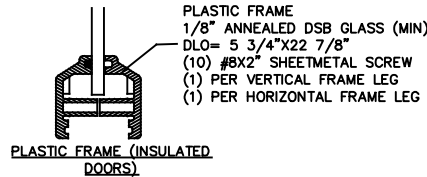
RUBBER FRAME GASKET (NON-INSULATED DOORS)



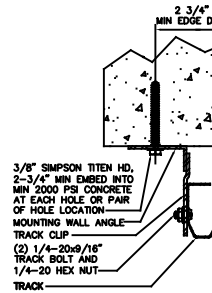
WOOD MOUNTING DETAIL - ANGLE OUT



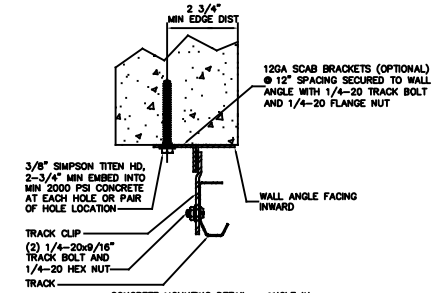
ALUMINUM FULL VIEW FRAME



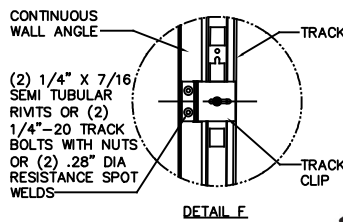
PLASTIC FRAME (INSULATED DOORS)



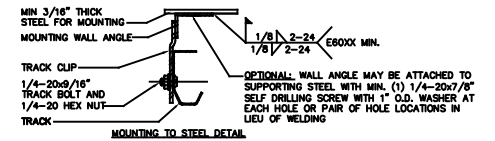
CONCRETE MOUNTING DETAIL - ANGLE OUT



CONCRETE MOUNTING DETAIL - ANGLE IN

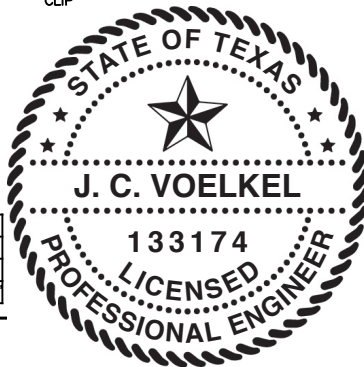


DETAIL E



MOUNTING TO STEEL DETAIL

STATIC PRESSURE RATINGS	APPROVED SIZES
DESIGN PRESSURE(PSF): +15.9/-18.2	MAX WIDTH: 10'-4"
	MAX HEIGHT: 24'-1"
IMPACT/CYCLIC RATED: NO	MAX SECTION HEIGHT: 24'



THE DRAWINGS AND ALL OTHER INFORMATION CONTAINED HEREIN ARE THE CONFIDENTIAL AND PROPRIETARY PROPERTY OF OVERHEAD DOOR CORPORATION AND ITS AFFILIATED COMPANIES. THIS DRAWING AND INFORMATION, IN WHOLE OR IN PART, MAY NOT BE COPIED IN ANY MANNER OR DISCLOSED TO ANYONE WITHOUT THE PRIOR WRITTEN CONSENT OF OVERHEAD DOOR CORPORATION. NO DISCLOSURE OF ANY OF THIS DRAWING OR INFORMATION IS INTENDED TO OPERATE AS A LICENSE OR AUTHORIZATION TO USE IT FOR ANY PURPOSE WITHOUT THE SPECIFIC WRITTEN CONSENT OF OVERHEAD DOOR CORPORATION.																																																						
<table border="1"> <thead> <tr> <th>HOLE DIAMETER</th> <th>WHOLE NUMBERS</th> <th>FRACTIONS</th> <th>ANGLES</th> </tr> </thead> <tbody> <tr> <td>UNDER .251 +.004/- .003</td> <td>± .25</td> <td>± .1</td> <td>± .5°</td> </tr> <tr> <td>.251 TO .500 +.006/- .003</td> <td>± .1</td> <td>± .03</td> <td>± .5°</td> </tr> <tr> <td>OVER .500 +.008/- .003</td> <td>± .03</td> <td>± .010</td> <td>± .5°</td> </tr> <tr> <td>± 1/16</td> <td></td> <td></td> <td></td> </tr> </tbody> </table>	HOLE DIAMETER	WHOLE NUMBERS	FRACTIONS	ANGLES	UNDER .251 +.004/- .003	± .25	± .1	± .5°	.251 TO .500 +.006/- .003	± .1	± .03	± .5°	OVER .500 +.008/- .003	± .03	± .010	± .5°	± 1/16				<table border="1"> <thead> <tr> <th>FINISH</th> <th>UNIT OF MEASURE</th> </tr> </thead> <tbody> <tr> <td>N/A</td> <td>EA</td> </tr> </tbody> </table>	FINISH	UNIT OF MEASURE	N/A	EA	<table border="1"> <thead> <tr> <th>DATE</th> <th>BY</th> <th>DATE</th> <th>BY</th> </tr> </thead> <tbody> <tr> <td>1/14/21</td> <td>T. CLARK</td> <td>1/8/21</td> <td>J. QIAN</td> </tr> <tr> <td>4/28/21</td> <td>T. CLARK</td> <td></td> <td></td> </tr> </tbody> </table>	DATE	BY	DATE	BY	1/14/21	T. CLARK	1/8/21	J. QIAN	4/28/21	T. CLARK			<table border="1"> <thead> <tr> <th>DRAWING TITLE</th> <th>SERIES</th> <th>OPTION CODE</th> </tr> </thead> <tbody> <tr> <td>LEVELVILLE TEGGE</td> <td>451/423/427/429/434/436</td> <td>2071</td> </tr> <tr> <td></td> <td>15.9/-18.2 PSF, 10'-4" MAX</td> <td></td> </tr> <tr> <td>DRAWING NUMBER</td> <td colspan="2">D-411784</td> </tr> <tr> <td>SCALE</td> <td>N/A</td> <td>SHEET 3 OF 3</td> </tr> </tbody> </table>	DRAWING TITLE	SERIES	OPTION CODE	LEVELVILLE TEGGE	451/423/427/429/434/436	2071		15.9/-18.2 PSF, 10'-4" MAX		DRAWING NUMBER	D-411784		SCALE	N/A	SHEET 3 OF 3
HOLE DIAMETER	WHOLE NUMBERS	FRACTIONS	ANGLES																																																			
UNDER .251 +.004/- .003	± .25	± .1	± .5°																																																			
.251 TO .500 +.006/- .003	± .1	± .03	± .5°																																																			
OVER .500 +.008/- .003	± .03	± .010	± .5°																																																			
± 1/16																																																						
FINISH	UNIT OF MEASURE																																																					
N/A	EA																																																					
DATE	BY	DATE	BY																																																			
1/14/21	T. CLARK	1/8/21	J. QIAN																																																			
4/28/21	T. CLARK																																																					
DRAWING TITLE	SERIES	OPTION CODE																																																				
LEVELVILLE TEGGE	451/423/427/429/434/436	2071																																																				
	15.9/-18.2 PSF, 10'-4" MAX																																																					
DRAWING NUMBER	D-411784																																																					
SCALE	N/A	SHEET 3 OF 3																																																				