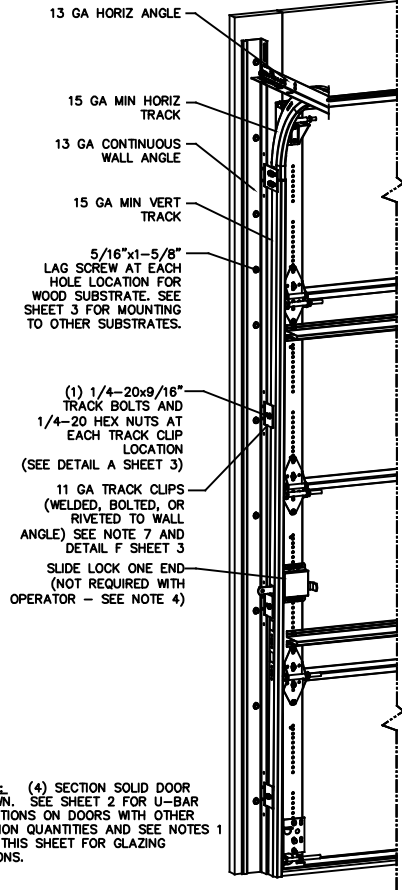


NOTES

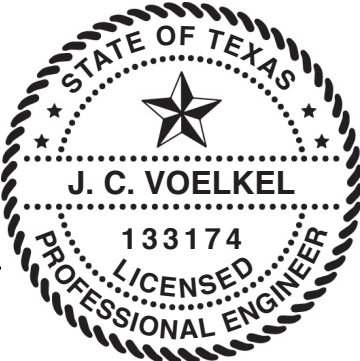
- STANDARD GLAZING OPTION - .125" MINIMUM DSB GLAZING MEETS UNIFORM STATIC DESIGN PRESSURES SHOWN ON THIS DRAWING. GLAZING SHALL HAVE A MAXIMUM HEIGHT OF 6.70" AND A MAXIMUM LENGTH OF 24.00". GLAZING IS NOT IMPACT RESISTANT AND DOES NOT MEET THE REQUIREMENTS FOR WIND-BORNE DEBRIS REGIONS.
- ALUMINUM FULL VIEW OPTION - ALUMINUM FULL VIEW SECTION MAY REPLACE ANY SECTION EXCEPT TOP AND BOTTOM PANELS. ALUMINUM FULL VIEW SECTION SHALL HAVE RAILS AND STILES OF EXTRUDED ALUMINUM ALLOY 6063-T6 WITH A 2-1/4" INTEGRAL FIN AND .125" MINIMUM DSB GLAZING INSTALLED WITH ALUMINUM RETAINERS IN ORDER TO MEET UNIFORM STATIC DESIGN PRESSURES SHOWN ON THIS DRAWING. AFV PANEL SIZE IS 51.5"x21.9" (MAX). GLAZING IS NOT IMPACT RESISTANT AND DOES NOT MEET THE REQUIREMENTS FOR WIND-BORNE DEBRIS REGIONS.
- MINIMUM OF 1" OVERLAP ON BOTH JAMBS REQUIRED TO MEET NEGATIVE DESIGN PRESSURES.
- SLIDE LOCK OR OPERATOR REQUIRED.
- SECTION STEEL TO HAVE THE FOLLOWING MINIMUM THICKNESS:  
421, 423 - 20 GA  
427, 429 - 24 GA  
434, 436 - 25 GA
- THE DESIGN OF THE SUPPORTING STRUCTURAL ELEMENTS SHALL BE THE RESPONSIBILITY OF THE PROFESSIONAL OF RECORD FOR THE BUILDING OR STRUCTURE AND IN ACCORDANCE WITH CURRENT BUILDING CODES FOR THE LOADS LISTED ON THIS DRAWING.
- TRACK CLIPS SHALL BE LOCATED WITH CENTERLINE OF BOTTOM CLIP SPACED 10" MAX FROM BOTTOM OF TRACK AND REMAINING TRACK CLIPS SPACED AT 24" O.C. MAX. SPACING BETWEEN TOP TRACK CLIP AND SPLICE PLATE SHALL BE 30" O.C. MAX.
- WHEN MOUNTING TO WOOD, DOOR JAMB TO BE MINIMUM 2x6 STRUCTURAL GRADE LUMBER. REFER TO JAMB CONNECTION SUPPLEMENT FOR ATTACHMENT TO SUPPORTING STRUCTURE.



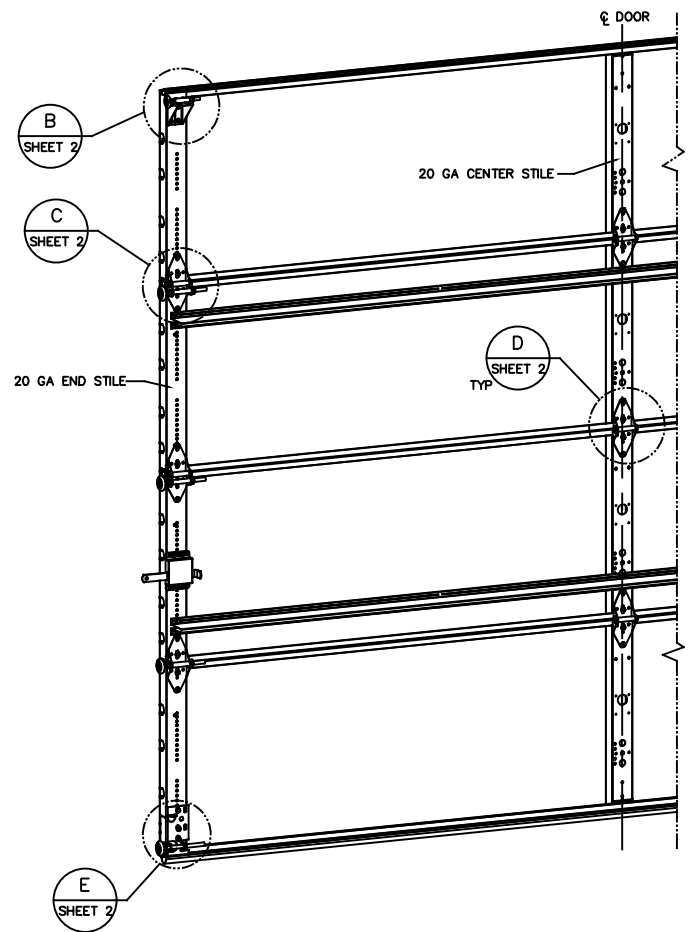
NOTE: (4) SECTION SOLID DOOR SHOWN. SEE SHEET 2 FOR U-BAR LOCATIONS ON DOORS WITH OTHER SECTION QUANTITIES AND SEE NOTES 1 & 2 THIS SHEET FOR GLAZING OPTIONS.

SUPERIMPOSED DESIGN PRESSURE LOADS ON SUPPORTING STRUCTURE		
MAX DOOR WIDTH	DOOR HEIGHT	MAX UNIFORM LOAD EACH JAMB (PLF)
9'-4"	ALL	+79.1/-90.2

STATIC PRESSURE RATINGS	APPROVED SIZES
DESIGN PRESSURE(PSF): +17.0/-19.4	MAX WIDTH: 9'-4" MAX HEIGHT: 24'-1"
IMPACT/CYCLIC RATED: NO	MAX SECTION HEIGHT: 24'



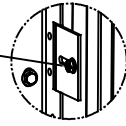
REVISIONS				
OR	REV	DESCRIPTION	DATE	APPROVAL
	VL005	- INITIAL DRAWING	1/13/2021	TLC
	VL005	A ADDED AFV PANEL SIZE	4/27/21	TLC



THE DOORS ARE DESIGNED AND MANUFACTURED TO COMPLY WITH THE 2018 IRC AND THE 2018 IBC.

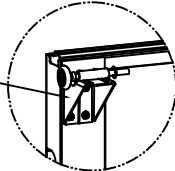
THE DRAWINGS AND ALL OTHER INFORMATION CONTAINED HEREIN ARE THE CONFIDENTIAL AND PROPRIETARY PROPERTY OF OVERHEAD DOOR CORPORATION AND ITS AFFILIATED COMPANIES. THIS DRAWING AND INFORMATION, IN WHOLE OR IN PART, MAY NOT BE COPIED IN ANY MANNER OR DISCLOSED TO ANYONE WITHOUT THE PRIOR WRITTEN CONSENT OF OVERHEAD DOOR CORPORATION. NO DISCLOSURE OF ANY OF THIS DRAWING OR INFORMATION IS INTENDED TO OPERATE AS A LICENSE OR AUTHORIZATION TO USE IT FOR ANY PURPOSE WITHOUT THE SPECIFIC WRITTEN CONSENT OF OVERHEAD DOOR CORPORATION.									
REF DWG	USED ON	TOLERANCES UNLESS OTHERWISE SPECIFIED			FINISH N/A	MATERIAL N/A	DATE 9/12/2020	DRAWN BY T CLARK	DRAWING TITLE VINDL/DAD/OPTION CODE 2062 SERIES 421/423/427/429/434/436, 17.0/-19.4 PSF, 9'-4" MAX
		HOLE DIAMETER UNDER .251 +.004/- .003 .251 TO .500 +.006/- .003 OVER .500 +.008/- .003	WHOLE NUMBERS ± .25 ± .1 ± .03 XXX ± .010 ± .5"	FRACTIONS ± 1/16					

1/4-20x9/16" TRACK BOLT AND 1/4-20 HEX NUT THROUGH THE SLOT IN THE TRACK AND TRACK CLIP



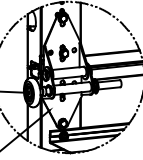
DETAIL A

12 GA COMMERCIAL TOP FRAME BRACKET WITH 13 GA ROLLER CARRIER ATTACHED WITH (4) 1/4-14x7/8" SELF DRILLING CRIMPITITE SCREWS



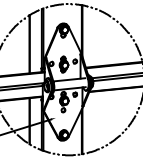
DETAIL B

2" STEEL ROLLER WITH 5-1/8" STEM AND 7/16" PUSHNUT AT EACH ROLLER LOCATION. 1/4" MAX BETWEEN PUSHNUT AND BRACKET OR HINGE



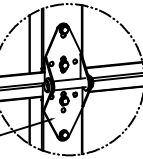
DETAIL C

14 GA WIDE BODY END HINGE TO ATTACH SECTIONS ONE AND TWO. 13 GA WIDE BODY END HINGE TO ATTACH REMAINING SECTIONS. FOR ALL, ATTACH WITH (4) 1/4-14x7/8" SELF DRILLING CRIMPITITE SCREWS



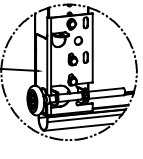
STANDARD SECTION

14 GA WIDE BODY INTERMEDIATE HINGE ATTACHED WITH (4) 1/4-14x7/8" SELF DRILLING CRIMPITITE SCREWS

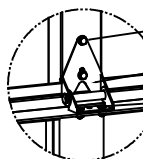


DETAIL E

12 GA BOTTOM BRACKET ATTACHED WITH (3) 1/4-14x7/8" SELF DRILLING CRIMPITITE SCREWS



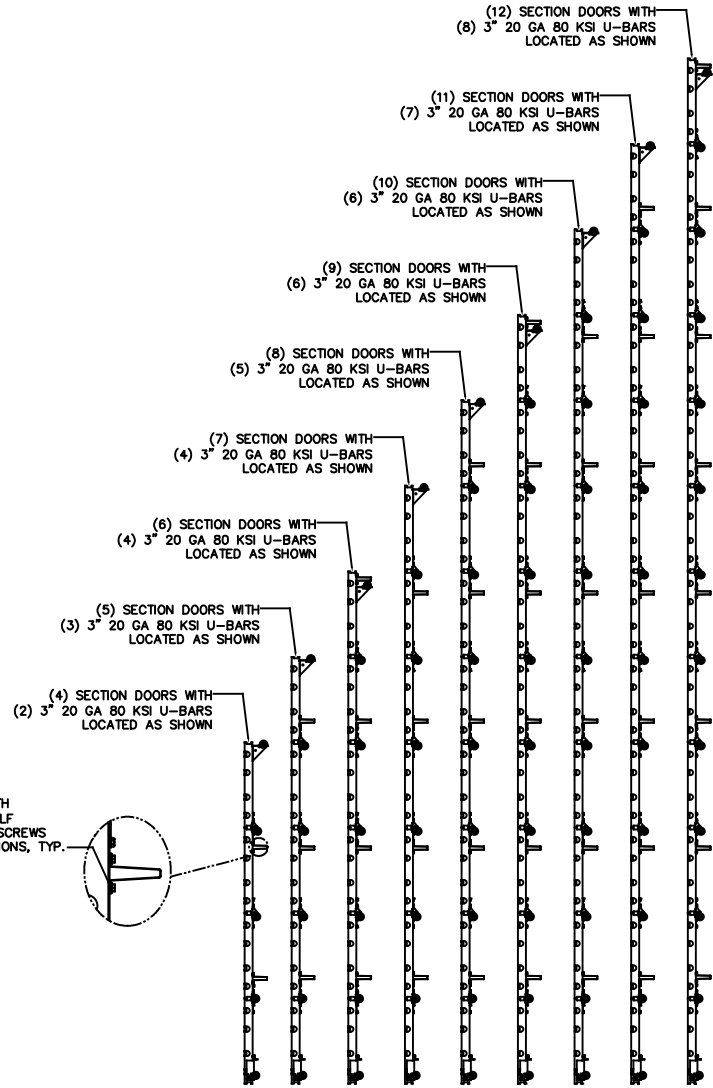
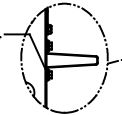
DETAIL F



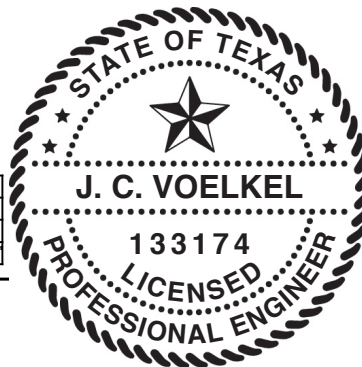
AFV SECTION

(2) 1/4-14x7/8" SELF DRILLING CRIMPITITE SCREWS  
HALF HINGE  
(2) 1/4 x 1/2" CARRIAGE BOLTS AND 1/4" FLANGE NUTS

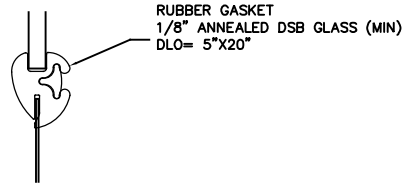
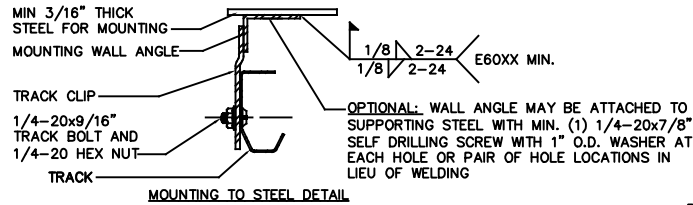
ATTACH U-BARS WITH (2) 1/4-14x7/8" SELF DRILLING CRIMPITITE SCREWS AT ALL STILE LOCATIONS, TYP.



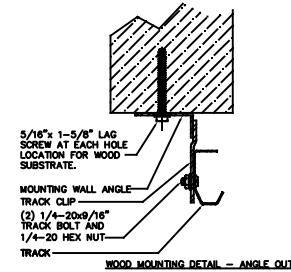
STATIC PRESSURE RATINGS	APPROVED SIZES
DESIGN PRESSURE(PSF): +17.0/-19.4	MAX WIDTH: 9'-4"
	MAX HEIGHT: 24'-1"
IMPACT/CYCLIC RATED: NO	MAX SECTION HEIGHT: 24'



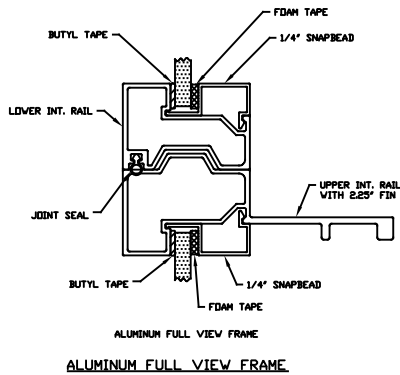
THE DRAWINGS AND ALL OTHER INFORMATION CONTAINED HEREIN ARE THE CONFIDENTIAL AND PROPRIETARY PROPERTY OF OVERHEAD DOOR CORPORATION AND ITS AFFILIATED COMPANIES. THIS DRAWING AND INFORMATION, IN WHOLE OR IN PART, MAY NOT BE COPIED OR DISCLOSED TO ANYONE WITHOUT THE PRIOR WRITTEN CONSENT OF OVERHEAD DOOR CORPORATION. NO DISCLOSURE OF ANY OF THIS DRAWING OR INFORMATION IS INTENDED TO OPERATE AS A LICENSE OR AUTHORIZATION TO USE IT FOR ANY PURPOSE WITHOUT THE SPECIFIC WRITTEN CONSENT OF OVERHEAD DOOR CORPORATION.									
REF DWG	USED IN	TOLERANCES UNLESS OTHERWISE SPECIFIED		FINISH	MATERIAL	DATE	DRAWING TITLE		
		FRACTIONS ± 1/16	WHOLE NUMBERS ± .25				N/A	JINDILOAD.OPTION CODE 2062	
		UNDER .251 +.004/- .003	.X ± .1			9/12/2020	SERIES 421/423/427/429/434/436, 17.0/-19.4 PSF, 9'-4" MAX		
		OVER .500 +.008/- .003	.XX ± .03			1/21/21	DRAWING NUMBER D-411778		
			.XXX ± .010	EA	N/A	1/22/21	SCALE: N/A SHEET 2 OF 3		
			ANGLES ± .5°						



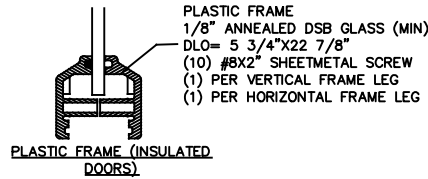
RUBBER FRAME GASKET (NON-INSULATED DOORS)



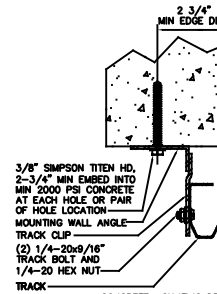
WOOD MOUNTING DETAIL - ANGLE OUT



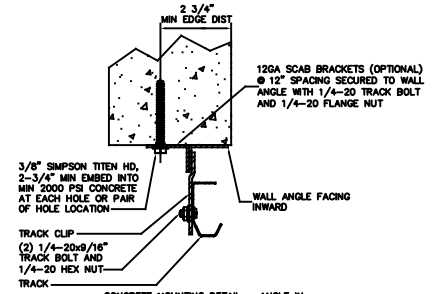
ALUMINUM FULL VIEW FRAME



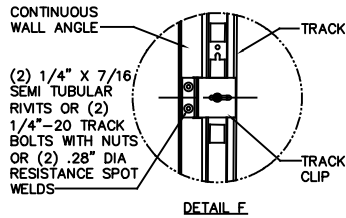
PLASTIC FRAME (INSULATED DOORS)



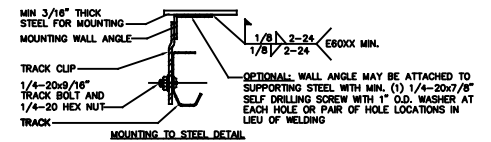
CONCRETE MOUNTING DETAIL - ANGLE OUT



CONCRETE MOUNTING DETAIL - ANGLE IN

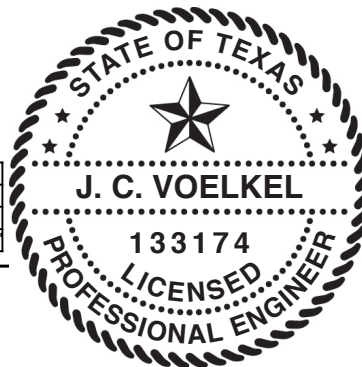


DETAIL F



MOUNTING TO STEEL DETAIL

STATIC PRESSURE RATINGS	APPROVED SIZES
DESIGN PRESSURE(PSF): +17.0/-19.4	MAX WIDTH: 9'-4"
	MAX HEIGHT: 24'-1"
IMPACT/CYCLIC RATED: NO	MAX SECTION HEIGHT: 24'



THE DRAWINGS AND ALL OTHER INFORMATION CONTAINED HEREIN ARE THE CONFIDENTIAL AND PROPRIETARY PROPERTY OF OVERHEAD DOOR CORPORATION AND ITS AFFILIATED COMPANIES. THIS DRAWING AND INFORMATION, IN WHOLE OR IN PART, MAY NOT BE COPIED IN ANY MANNER OR DISCLOSED TO ANYONE WITHOUT THE PRIOR WRITTEN CONSENT OF OVERHEAD DOOR CORPORATION. NO DISCLOSURE OF ANY OF THIS DRAWING OR INFORMATION IS INTENDED TO OPERATE AS A LICENSE OR AUTHORIZATION TO USE IT FOR ANY PURPOSE WITHOUT THE SPECIFIC WRITTEN CONSENT OF OVERHEAD DOOR CORPORATION.																																														
<table border="1"> <thead> <tr> <th>HOLE DIAMETER</th> <th>WHOLE NUMBERS</th> <th>FRACTIONS</th> </tr> </thead> <tbody> <tr> <td>UNDER .251 +.004/- .003</td> <td>± .25</td> <td>± .01</td> </tr> <tr> <td>.251 TO .500 +.006/- .003</td> <td>.XX</td> <td>± .03</td> </tr> <tr> <td>OVER .500 +.008/- .003</td> <td>.XXX</td> <td>± .010</td> </tr> <tr> <td></td> <td></td> <td>± 1/16</td> </tr> </tbody> </table>	HOLE DIAMETER	WHOLE NUMBERS	FRACTIONS	UNDER .251 +.004/- .003	± .25	± .01	.251 TO .500 +.006/- .003	.XX	± .03	OVER .500 +.008/- .003	.XXX	± .010			± 1/16	<table border="1"> <thead> <tr> <th>FINISH</th> <th>UNIT OF MEASURE</th> </tr> </thead> <tbody> <tr> <td>N/A</td> <td>EA</td> </tr> </tbody> </table>	FINISH	UNIT OF MEASURE	N/A	EA	<table border="1"> <thead> <tr> <th>DATE</th> <th>BY</th> <th>CHKD BY</th> <th>DATE</th> </tr> </thead> <tbody> <tr> <td>9/12/2020</td> <td>T. CLARK</td> <td>J. QIAN</td> <td>1/21/21</td> </tr> <tr> <td>1/22/21</td> <td>T. CLARK</td> <td></td> <td></td> </tr> </tbody> </table>	DATE	BY	CHKD BY	DATE	9/12/2020	T. CLARK	J. QIAN	1/21/21	1/22/21	T. CLARK			<table border="1"> <thead> <tr> <th>DRAWING TITLE</th> <th>REVISION</th> </tr> </thead> <tbody> <tr> <td>WINDLOAD OPTION CODE 2062</td> <td></td> </tr> <tr> <td>SERIES 421/423/427/429/434/436, 17.0/-19.4 PSF, 9'-4" MAX</td> <td></td> </tr> <tr> <td>DRAWING NUMBER</td> <td>D-411778</td> </tr> <tr> <td>SCALE</td> <td>N/A</td> </tr> <tr> <td>SHEET</td> <td>3 OF 3</td> </tr> </tbody> </table>	DRAWING TITLE	REVISION	WINDLOAD OPTION CODE 2062		SERIES 421/423/427/429/434/436, 17.0/-19.4 PSF, 9'-4" MAX		DRAWING NUMBER	D-411778	SCALE	N/A	SHEET	3 OF 3
HOLE DIAMETER	WHOLE NUMBERS	FRACTIONS																																												
UNDER .251 +.004/- .003	± .25	± .01																																												
.251 TO .500 +.006/- .003	.XX	± .03																																												
OVER .500 +.008/- .003	.XXX	± .010																																												
		± 1/16																																												
FINISH	UNIT OF MEASURE																																													
N/A	EA																																													
DATE	BY	CHKD BY	DATE																																											
9/12/2020	T. CLARK	J. QIAN	1/21/21																																											
1/22/21	T. CLARK																																													
DRAWING TITLE	REVISION																																													
WINDLOAD OPTION CODE 2062																																														
SERIES 421/423/427/429/434/436, 17.0/-19.4 PSF, 9'-4" MAX																																														
DRAWING NUMBER	D-411778																																													
SCALE	N/A																																													
SHEET	3 OF 3																																													