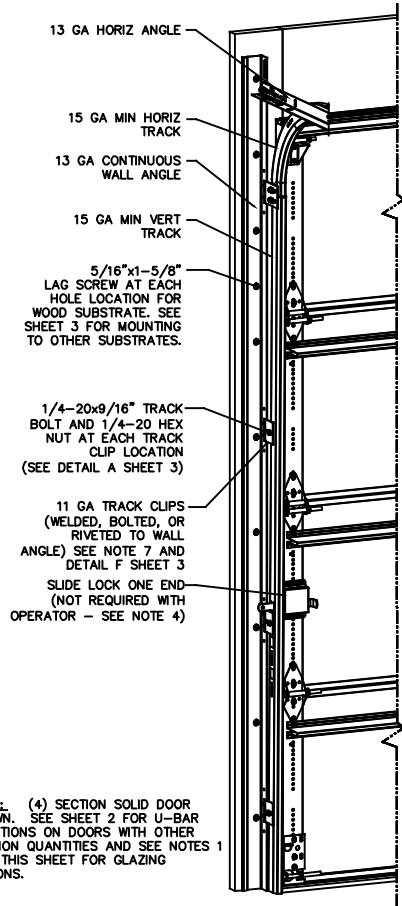


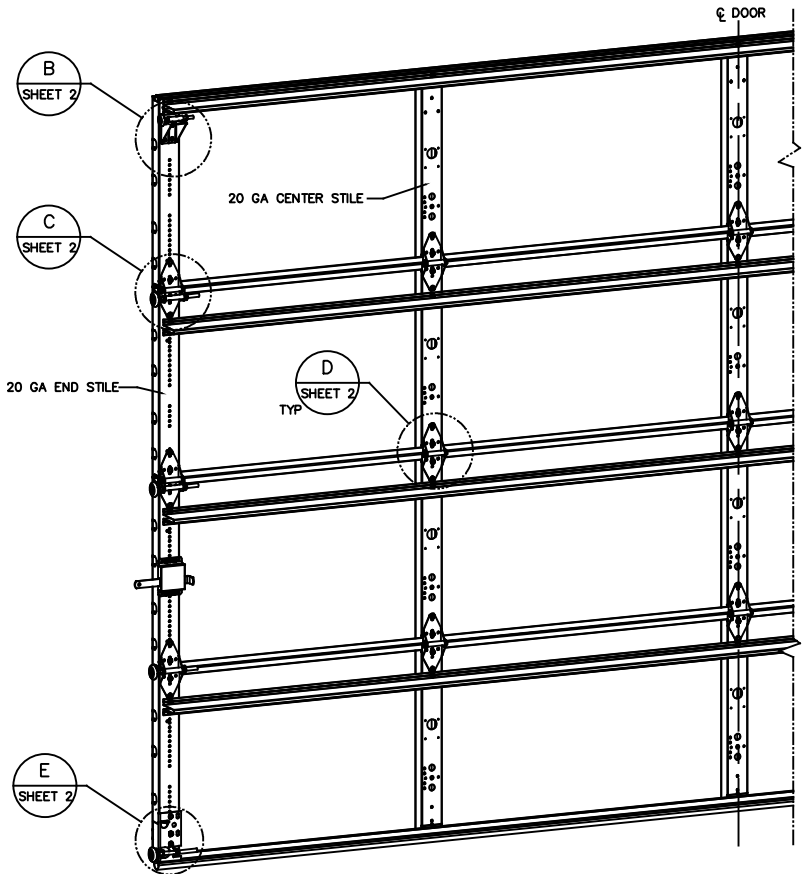
NOTES

- STANDARD GLAZING OPTION - .125" MINIMUM DSB GLAZING MEETS UNIFORM STATIC DESIGN PRESSURES SHOWN ON THIS DRAWING. GLAZING SHALL HAVE A MAXIMUM HEIGHT OF 6.70" AND A MAXIMUM LENGTH OF 24.00". GLAZING IS NOT IMPACT RESISTANT AND DOES NOT MEET THE REQUIREMENTS FOR WIND-BORNE DEBRIS REGIONS.
- ALUMINUM FULL VIEW OPTION - ALUMINUM FULL VIEW SECTION MAY REPLACE ANY SECTION EXCEPT TOP AND BOTTOM PANELS. ALUMINUM FULL VIEW SECTION SHALL HAVE RAILS AND STILES OF EXTRUDED ALUMINUM ALLOY 6063-T6 WITH A 2-1/4" INTEGRAL FIN AND .125" MINIMUM DSB GLAZING INSTALLED WITH ALUMINUM RETAINERS IN ORDER TO MEET UNIFORM STATIC DESIGN PRESSURES SHOWN ON THIS DRAWING. AFV PANEL SIZE IS 45.5"x21.9" (MAX). GLAZING IS NOT IMPACT RESISTANT AND DOES NOT MEET THE REQUIREMENTS FOR WIND-BORNE DEBRIS REGIONS.
- MINIMUM OF 1" OVERLAP ON BOTH JAMBS REQUIRED TO MEET NEGATIVE DESIGN PRESSURES.
- SLIDE LOCK OR OPERATOR REQUIRED.
- SECTION STEEL TO HAVE THE FOLLOWING MINIMUM THICKNESS:  
421, 423 - 20 GA  
427, 429 - 24 GA  
434, 436 - 25 GA
- THE DESIGN OF THE SUPPORTING STRUCTURAL ELEMENTS SHALL BE THE RESPONSIBILITY OF THE PROFESSIONAL OF RECORD FOR THE BUILDING OR STRUCTURE AND IN ACCORDANCE WITH CURRENT BUILDING CODES FOR THE LOADS LISTED ON THIS DRAWING.
- TRACK CLIPS SHALL BE LOCATED WITH CENTERLINE OF BOTTOM CLIP SPACED 10" MAX FROM BOTTOM OF TRACK AND REMAINING TRACK CLIPS SPACED AT 24" O.C. MAX. SPACING BETWEEN TOP TRACK CLIP AND SPLICE PLATE SHALL BE 30" O.C. MAX.
- WHEN MOUNTING TO WOOD, DOOR JAMB TO BE MINIMUM 2x6 STRUCTURAL GRADE LUMBER. REFER TO JAMB CONNECTION SUPPLEMENT FOR ATTACHMENT TO SUPPORTING STRUCTURE.



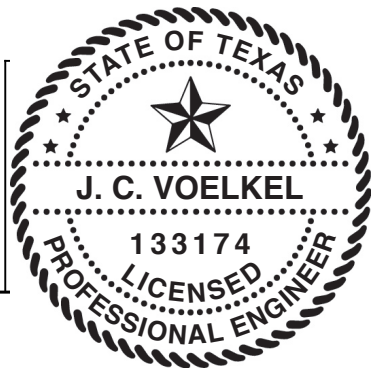
NOTE: (\*) SECTION SOLID DOOR SHOWN. SEE SHEET 2 FOR U-BAR LOCATIONS ON DOORS WITH OTHER SECTION QUANTITIES AND SEE NOTES 1 & 2 THIS SHEET FOR GLAZING OPTIONS.

REVISIONS				
CR	REV	DESCRIPTION	DATE	APPROVAL
VL005	-	INITIAL DRAWING	1/14/2021	TLC
VL005	A	ADDED AFV PANEL SIZE	4/27/21	TLC



MAX DOOR WIDTH	DOOR HEIGHT	MAX UNIFORM LOAD EACH JAMB (PLF)
14'-2"	ALL	+80.8/-90.0

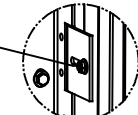
STATIC PRESSURE RATINGS	APPROVED SIZES
DESIGN PRESSURE(PSF): +15.9/-18.2	MAX WIDTH: 14'-2"
	MAX HEIGHT: 24'-1"
IMPACT/CYCLIC RATED: NO	MAX SECTION HEIGHT: 24'



THE DOORS ARE DESIGNED AND MANUFACTURED TO COMPLY WITH THE 2018 IRC AND THE 2018 IBC.

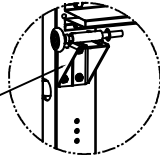
THE DRAWINGS AND ALL OTHER INFORMATION CONTAINED HEREIN ARE THE CONFIDENTIAL AND PROPRIETARY PROPERTY OF OVERHEAD DOOR CORPORATION AND ITS AFFILIATED COMPANIES. THIS DRAWING AND INFORMATION, IN WHOLE OR IN PART, MAY NOT BE COPIED IN ANY MANNER OR DISCLOSED TO ANYONE WITHOUT THE PRIOR WRITTEN CONSENT OF OVERHEAD DOOR CORPORATION. NO DISCLOSURE OF ANY OF THIS DRAWING OR INFORMATION IS INTENDED TO OPERATE AS A LICENSE OR AUTHORIZATION TO USE IT FOR ANY PURPOSE WITHOUT THE SPECIFIC WRITTEN CONSENT OF OVERHEAD DOOR CORPORATION.										
REF DWG	USED ON	TOLERANCES UNLESS OTHERWISE SPECIFIED			FINISH N/A	MATERIAL N/A	DATE 1/14/21	DRAWN BY T CLARK	DATE 1/14/21	DRAWING TITLE WIND LOAD OPTION CODE 2032 SERIES 421/423/427/429/434/436, 15.9/-18.2 PSF, 14'-2" MAX
		HOLE DIAMETER UNDER .251 +.004/- .003 .251 TO .500 +.006/- .003 OVER .500 +.008/- .003	WHOLE NUMBERS: ± .25 X ± .1 XX ± .03 XXX ± .010 ANGLES: ± .5°	FRACTIONS ± 1/16						

1/4-20x9/16" TRACK BOLT AND 1/4-20 HEX NUT THROUGH THE SLOT IN THE TRACK AND TRACK CLIP



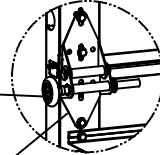
DETAIL A

12 GA COMMERCIAL TOP FRAME BRACKET WITH 13 GA ROLLER CARRIER ATTACHED WITH (4) 1/4-14x7/8" SELF DRILLING CRIMPITITE SCREWS



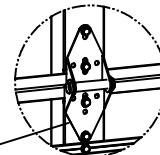
DETAIL B

2" STEEL ROLLER WITH 5-1/8" STEM AND 7/16" PUSHNUT AT EACH ROLLER LOCATION. 1/4" MAX BETWEEN PUSHNUT AND BRACKET OR HINGE



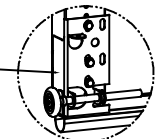
DETAIL C

13 GA WIDE BODY END HINGES EACH ATTACHED WITH (4) 1/4-14x7/8" SELF DRILLING CRIMPITITE SCREWS

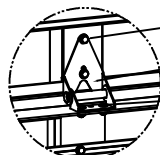


SOLID SECTION

14 GA WIDE BODY INTERMEDIATE HINGE ATTACHED WITH (4) 1/4-14x7/8" SELF DRILLING CRIMPITITE SCREWS



DETAIL E



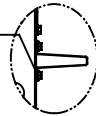
DETAIL D

(2) 1/4-14x7/8" SELF DRILLING CRIMPITITE SCREWS

HALF HINGE

(2) 1/4 x 1/2" CARRIAGE BOLTS AND 1/4" FLANGE NUTS

ATTACH U-BARS WITH (2) 1/4-14x7/8" SELF DRILLING CRIMPITITE SCREWS AT ALL STILE LOCATIONS, TYP.



(4) SECTION DOORS WITH (5) 3" 20 GA 80 KSI U-BARS LOCATED AS SHOWN

(5) SECTION DOORS WITH (5) 3" 20 GA 80 KSI U-BARS LOCATED AS SHOWN

(6) SECTION DOORS WITH (6) 3" 20 GA 80 KSI U-BARS LOCATED AS SHOWN

(7) SECTION DOORS WITH (7) 3" 20 GA 80 KSI U-BARS LOCATED AS SHOWN

(8) SECTION DOORS WITH (8) 3" 20 GA 80 KSI U-BARS LOCATED AS SHOWN

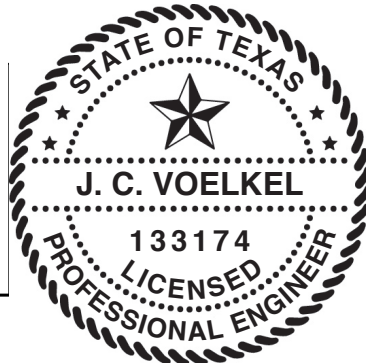
(9) SECTION DOORS WITH (9) 3" 20 GA 80 KSI U-BARS LOCATED AS SHOWN

(10) SECTION DOORS WITH (10) 3" 20 GA 80 KSI U-BARS LOCATED AS SHOWN

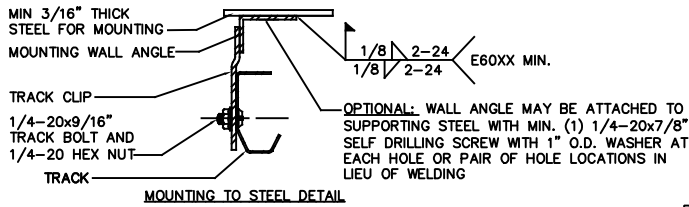
(11) SECTION DOORS WITH (11) 3" 20 GA 80 KSI U-BARS LOCATED AS SHOWN

(12) SECTION DOORS WITH (12) 3" 20 GA 80 KSI U-BARS LOCATED AS SHOWN

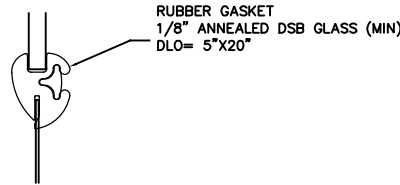
STATIC PRESSURE RATINGS	APPROVED SIZES
DESIGN PRESSURE(PSF): +15.9/-18.2	MAX WIDTH: 14'-2"
	MAX HEIGHT: 24'-1"
IMPACT/CYCLIC RATED: NO	MAX SECTION HEIGHT: 24'



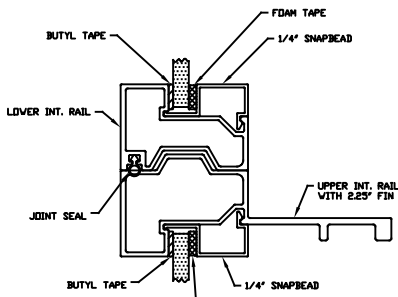
THE DRAWINGS AND ALL OTHER INFORMATION CONTAINED HEREIN ARE THE CONFIDENTIAL AND PROPRIETARY PROPERTY OF OVERHEAD DOOR CORPORATION AND ITS AFFILIATED COMPANIES. THIS DRAWING AND INFORMATION, IN WHOLE OR IN PART, MAY NOT BE COPIED IN ANY MANNER OR DISCLOSED TO ANYONE WITHOUT THE PRIOR WRITTEN CONSENT OF OVERHEAD DOOR CORPORATION. NO DISCLOSURE OF ANY OF THIS DRAWING OR INFORMATION IS INTENDED TO OPERATE AS A LICENSE OR AUTHORIZATION TO USE IT FOR ANY PURPOSE WITHOUT THE SPECIFIC WRITTEN CONSENT OF OVERHEAD DOOR CORPORATION.		FINISH: N/A		DATE: 1/14/21	
TOLERANCES UNLESS OTHERWISE SPECIFIED		UNIT OF MEASURE: EA		DRAWING TITLE: WINDLOAD OPTION CODE 2032	
HOLE DIAMETER	WHOLE NUMBERS: ± .25	MATERIAL: N/A		WINDLOAD OPTION CODE 2032	
UNDER .251 +.004/- .003	.X ± .1	LEWISVILLE, TEXAS		SERIES 421/423/427/429/434/436	
.251 TO .500 +.006/- .003	.XX ± .03	CHECKED BY: T CLARK		15.9/-18.2 PSF, 14'-2" MAX	
OVER .500 +.008/- .003	.XXX ± .010	APPROVED BY: J QIAN		DRAWING NUMBER: D- 411795	
FRACTIONS: ± 1/16	ANGLES: ± .5°	APPROVED BY: T CLARK		SCALE: N/A	
REF DWG	USED ON			SHEET 2 OF 3	



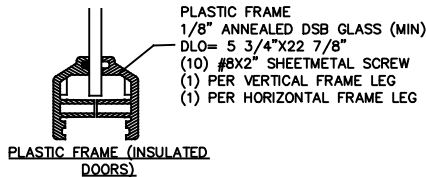
MOUNTING TO STEEL DETAIL



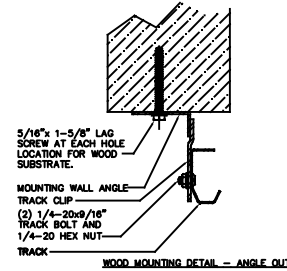
RUBBER FRAME GASKET (NON-INSULATED DOORS)



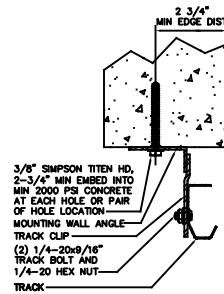
ALUMINUM FULL VIEW FRAME



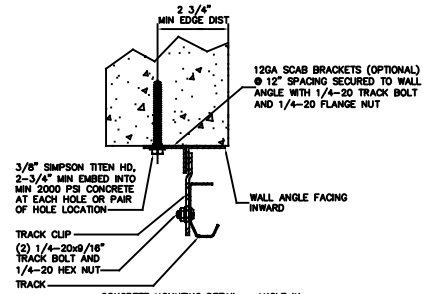
PLASTIC FRAME (INSULATED DOORS)



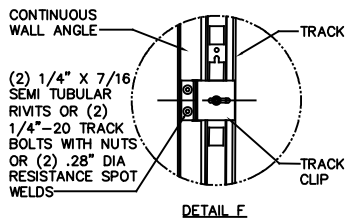
WOOD MOUNTING DETAIL - ANGLE OUT



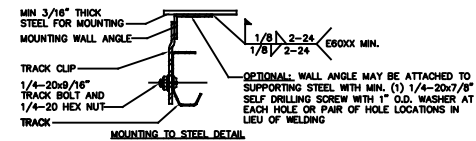
CONCRETE MOUNTING DETAIL - ANGLE OUT



CONCRETE MOUNTING DETAIL - ANGLE IN

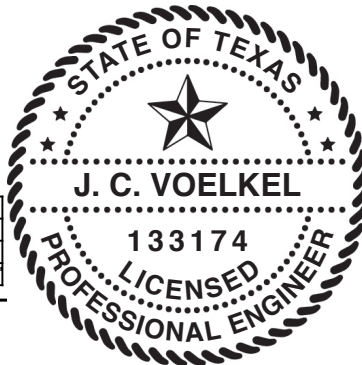


DETAIL F



MOUNTING TO STEEL DETAIL

STATIC PRESSURE RATINGS	APPROVED SIZES
DESIGN PRESSURE(PSF): +15.9/-18.2	MAX WIDTH: 14'-2"
	MAX HEIGHT: 24'-1"
IMPACT/CYCLIC RATED: NO	MAX SECTION HEIGHT: 24'



THE DRAWINGS AND ALL OTHER INFORMATION CONTAINED HEREIN ARE THE CONFIDENTIAL AND PROPRIETARY PROPERTY OF OVERHEAD DOOR CORPORATION AND ITS AFFILIATED COMPANIES. THIS DRAWING AND INFORMATION, IN WHOLE OR IN PART, MAY NOT BE COPIED IN ANY MANNER OR DISCLOSED TO ANYONE WITHOUT THE PRIOR WRITTEN CONSENT OF OVERHEAD DOOR CORPORATION. NO DISCLOSURE OF ANY OF THIS DRAWING OR INFORMATION IS INTENDED TO OPERATE AS A LICENSE OR AUTHORIZATION TO USE IT FOR ANY PURPOSE WITHOUT THE SPECIFIC WRITTEN CONSENT OF OVERHEAD DOOR CORPORATION.																																															
<table border="1"> <tr> <th>HOLE DIAMETER</th> <th>FINISH</th> </tr> <tr> <td>UNDER .251 +.004/--.003</td> <td>N/A</td> </tr> <tr> <td>.251 TO .500 +.006/--.003</td> <td>X ± .1</td> </tr> <tr> <td>OVER .500 +.008/--.003</td> <td>XX ± .03</td> </tr> <tr> <td>FRACTIONS ± 1/16</td> <td>XXX ± .010</td> </tr> <tr> <td></td> <td>ANGLES: ± .5°</td> </tr> </table>	HOLE DIAMETER	FINISH	UNDER .251 +.004/--.003	N/A	.251 TO .500 +.006/--.003	X ± .1	OVER .500 +.008/--.003	XX ± .03	FRACTIONS ± 1/16	XXX ± .010		ANGLES: ± .5°	<table border="1"> <tr> <th>WHOLE NUMBERS</th> <th>UNIT OF MEASURE</th> </tr> <tr> <td>± .25</td> <td>EA</td> </tr> <tr> <td>± .1</td> <td></td> </tr> <tr> <td>± .03</td> <td></td> </tr> <tr> <td>± .010</td> <td></td> </tr> <tr> <td>± .5°</td> <td></td> </tr> </table>	WHOLE NUMBERS	UNIT OF MEASURE	± .25	EA	± .1		± .03		± .010		± .5°		<table border="1"> <tr> <th>DATE</th> <th>BY</th> </tr> <tr> <td>1/14/21</td> <td>T. CLARK</td> </tr> <tr> <td>1/14/21</td> <td>J. QIAN</td> </tr> <tr> <td>4/27/21</td> <td>T. CLARK</td> </tr> </table>	DATE	BY	1/14/21	T. CLARK	1/14/21	J. QIAN	4/27/21	T. CLARK	<table border="1"> <tr> <th>DRAWING TITLE</th> <th>SCALE</th> <th>SHEET</th> </tr> <tr> <td>WINDLOAD OPTION CODE 2032 (SERIES 421/423/427/429/434/436, 15.9/-18.2 PSF, 14'-2" MAX)</td> <td>N/A</td> <td>3 OF 3</td> </tr> <tr> <td>DRAWING NUMBER</td> <td></td> <td></td> </tr> <tr> <td>D-411795</td> <td></td> <td></td> </tr> </table>	DRAWING TITLE	SCALE	SHEET	WINDLOAD OPTION CODE 2032 (SERIES 421/423/427/429/434/436, 15.9/-18.2 PSF, 14'-2" MAX)	N/A	3 OF 3	DRAWING NUMBER			D-411795		
HOLE DIAMETER	FINISH																																														
UNDER .251 +.004/--.003	N/A																																														
.251 TO .500 +.006/--.003	X ± .1																																														
OVER .500 +.008/--.003	XX ± .03																																														
FRACTIONS ± 1/16	XXX ± .010																																														
	ANGLES: ± .5°																																														
WHOLE NUMBERS	UNIT OF MEASURE																																														
± .25	EA																																														
± .1																																															
± .03																																															
± .010																																															
± .5°																																															
DATE	BY																																														
1/14/21	T. CLARK																																														
1/14/21	J. QIAN																																														
4/27/21	T. CLARK																																														
DRAWING TITLE	SCALE	SHEET																																													
WINDLOAD OPTION CODE 2032 (SERIES 421/423/427/429/434/436, 15.9/-18.2 PSF, 14'-2" MAX)	N/A	3 OF 3																																													
DRAWING NUMBER																																															
D-411795																																															