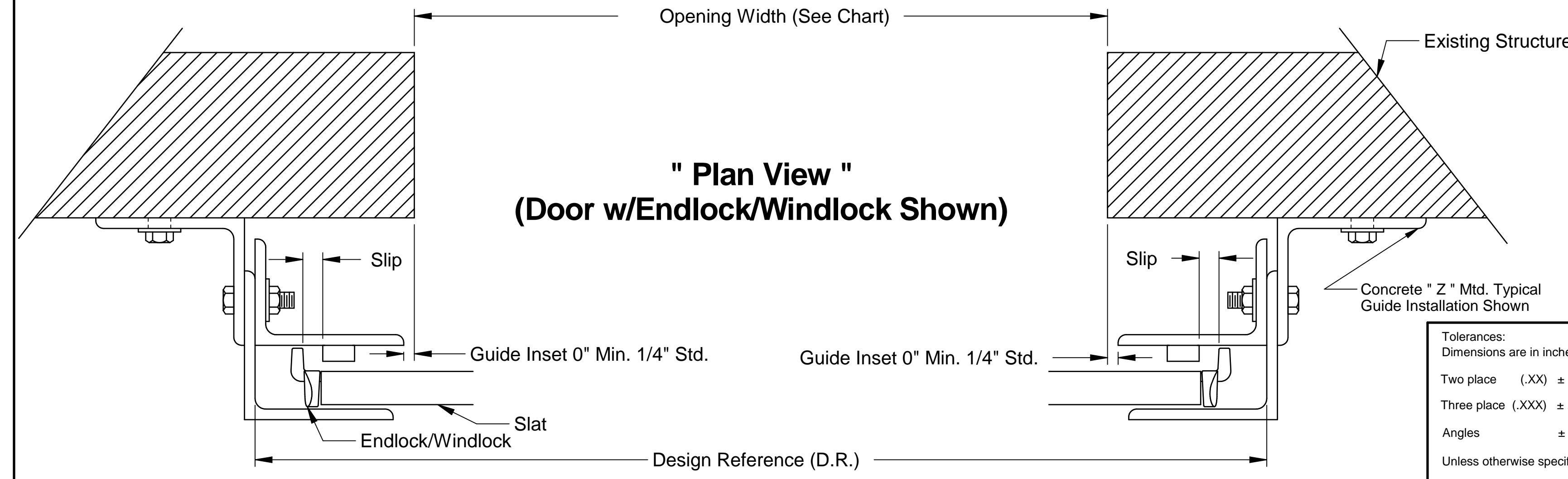


" Elevation View "



" Plan View "
(Door w/Endlock/Windlock Shown)



John E. Scates
2560 King Arthur Blvd, Ste 124-54
Lewisville, TX 75056
FL PE #51737
TX PE #56308-f2203

Professional Engineer's seal provided only for verification of wind load construction details.

Doors Tested Per
ANSI/DASMA 108-05
ANSI/DASMA 108-12
For Static Air Pressure

Complies with the Wind Load requirements
of the IBC/IRC 2018

Rev.	Description	ECO	Date
C	Added 2018 IBC/IRC note.	8534.01	03/26/21
B	Filled in missing information (Sheet 11)	7415.01	06/09/2017
A	Release for production.	7415.01	07/21/2016

Tolerances:
Dimensions are in inches
Two place (.XX) ± .03
Three place (.XXX) ± .015
Angles ± 1°
Unless otherwise specified

Material:

Finish:

Scale: None
Drawn by: M. Reutzel
Checked by: J. Bonnell
Date: 07/21/16
ECO: 7415.01

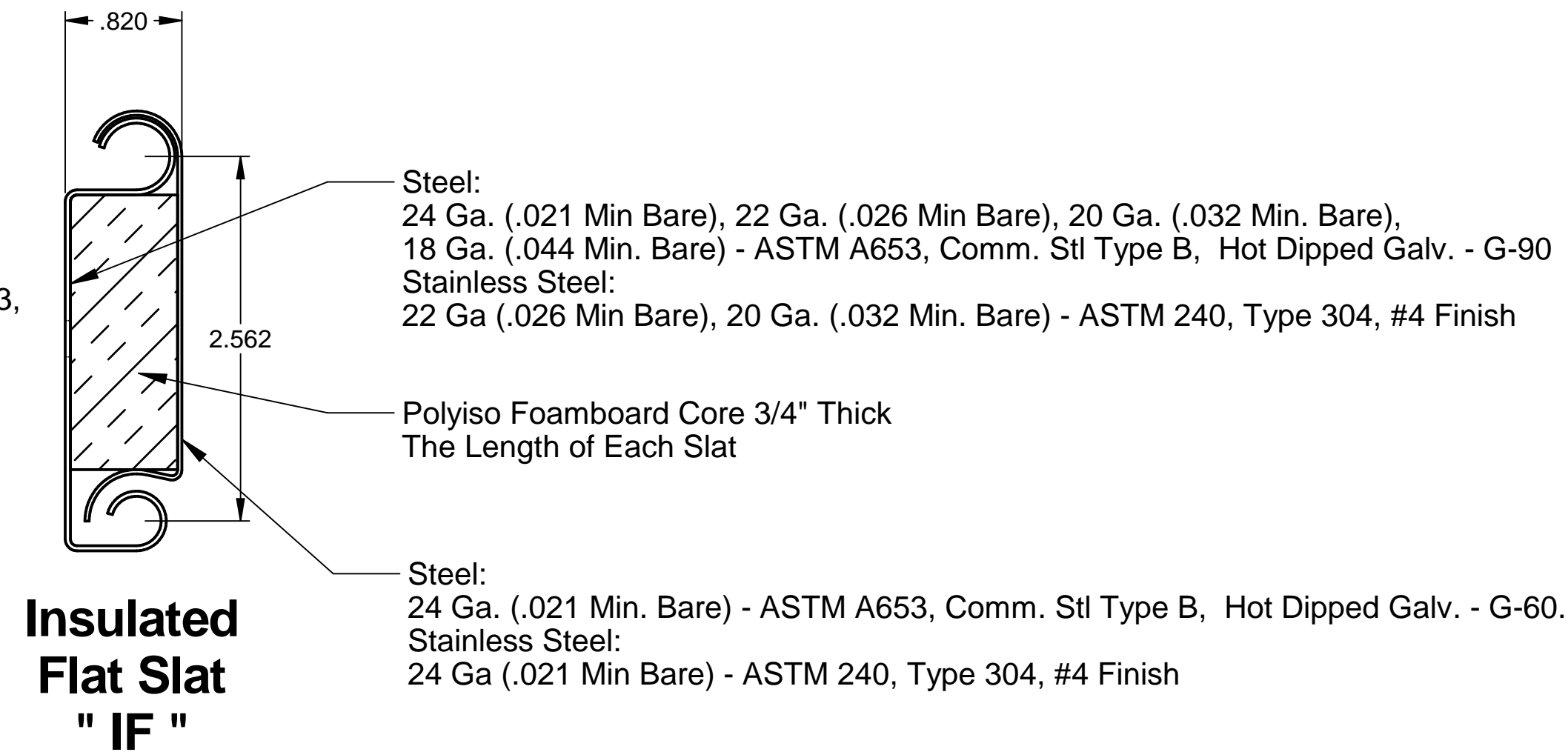
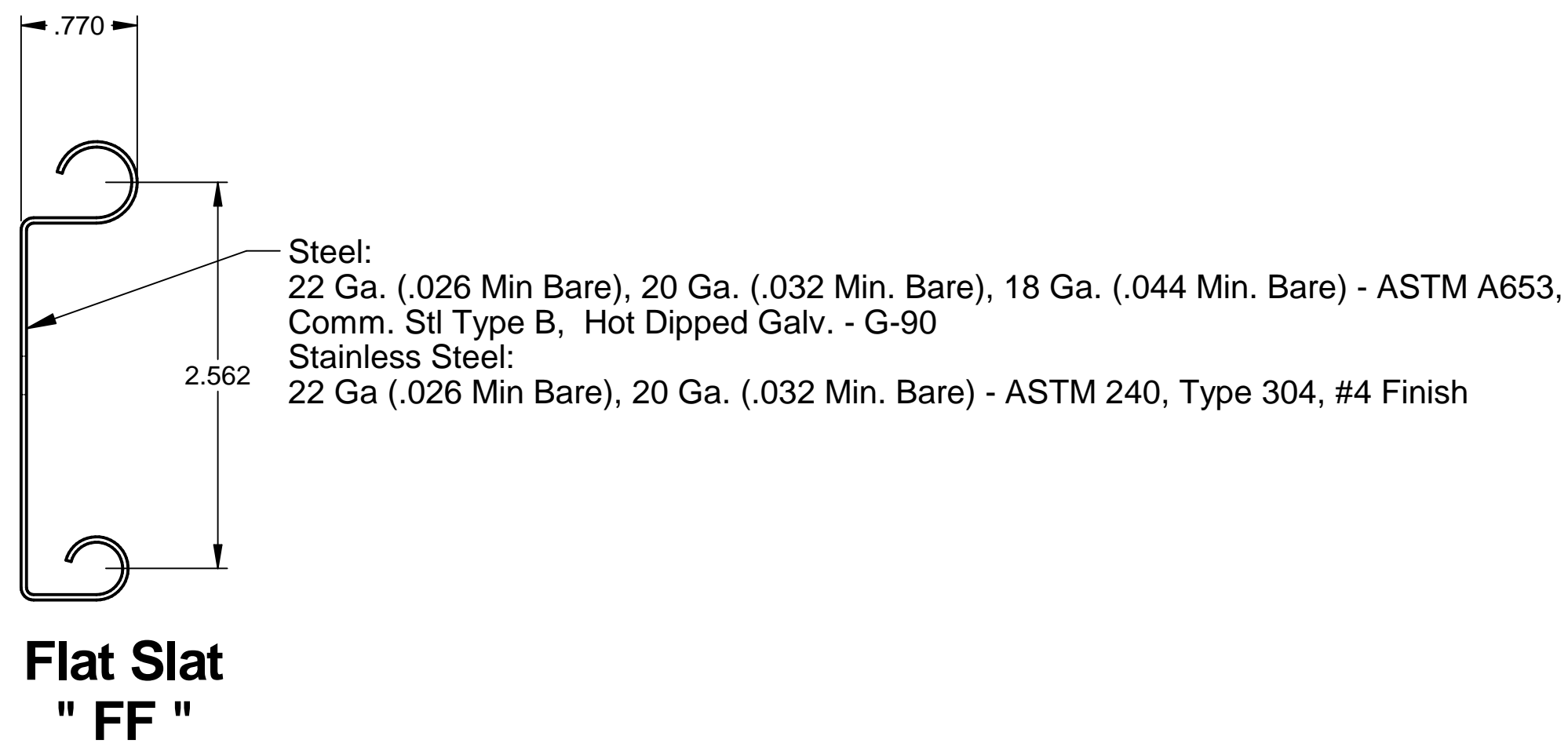


1101 East River Road
Dixon, IL 61021

Title:
Specifications, Wind Load Doors
for Texas Approvals

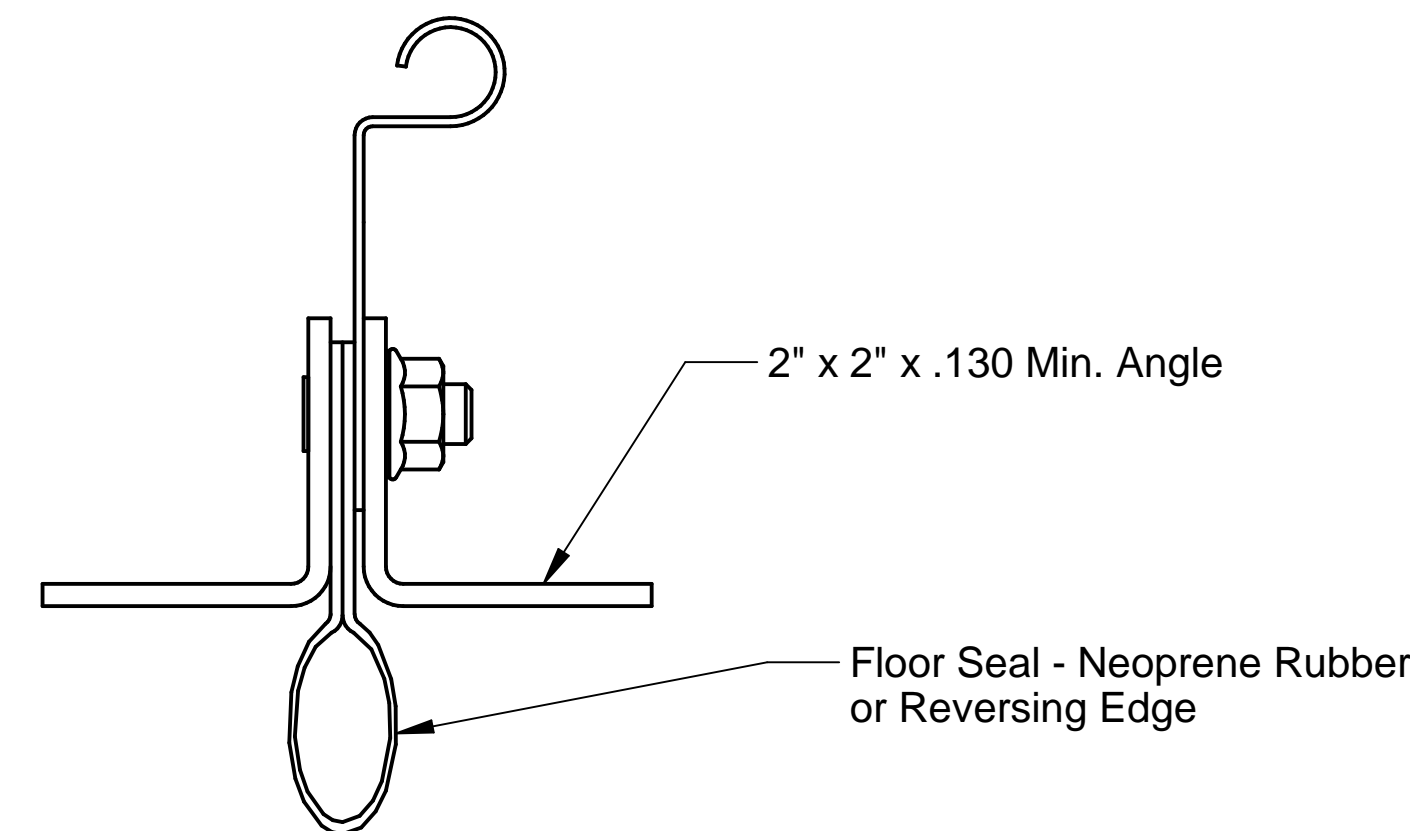
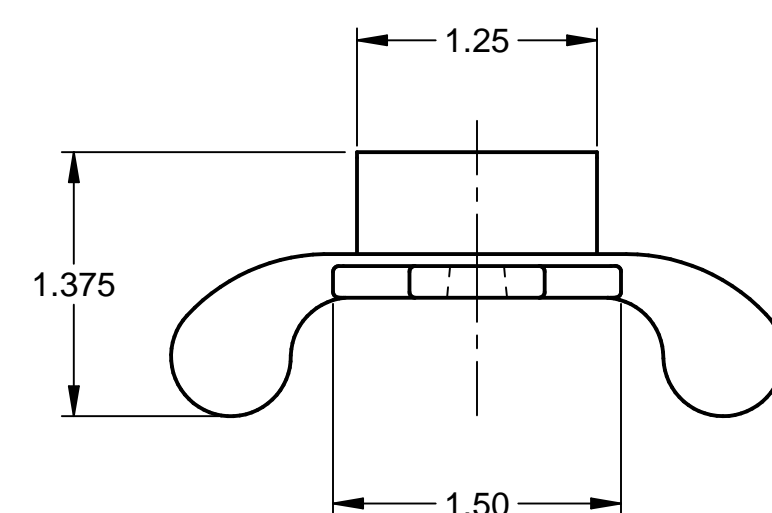
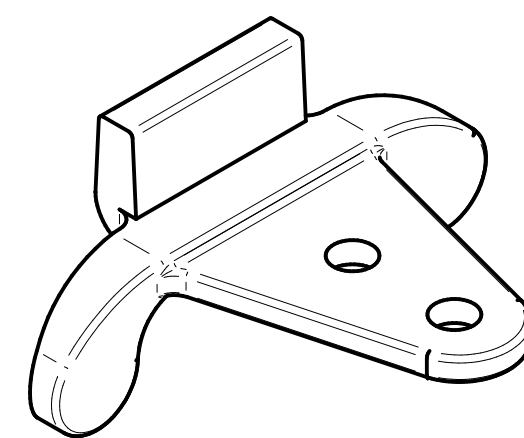
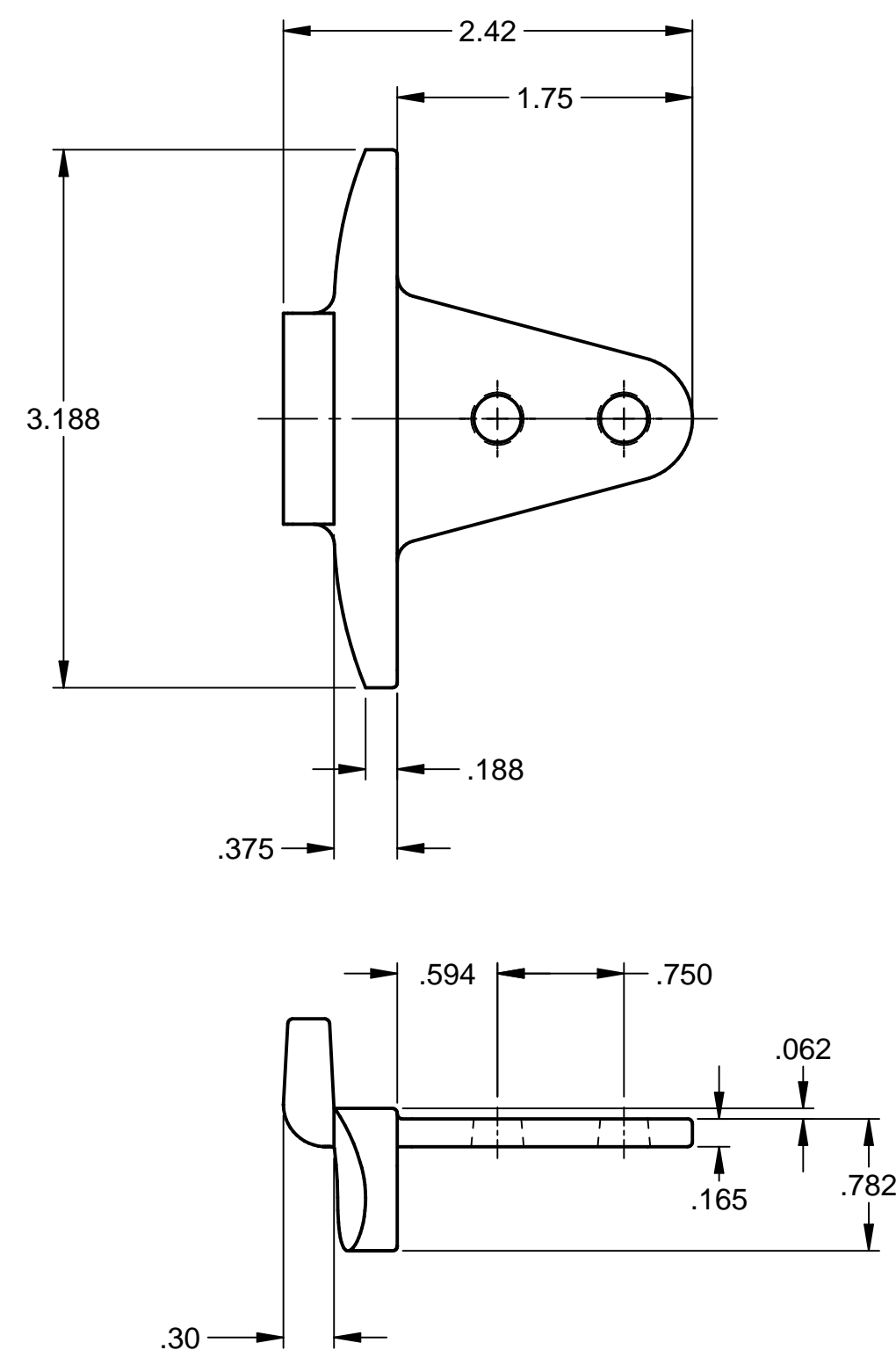
No. P-2262
Sheet 1 of 12
Rev C

General Specifications



Flat Slat and Insulated Flat Slat Profiles

- 1) DOORS shall be rolling steel model DuraCoil (Standard Service Door) as manufactured by Raynor Garage Doors.
- 2) GUIDES - Structural steel angles, in accordance to ASTM A36 Steel, Min. 5/16" thick and rolled angles in accordance to ASTM A1011 HSLA-F, grade 50 steel, min. .180 thick. Top of guide angles flared and provided with 4 removable curtain stops.
- 3) BRACKETS - Steel plates, in accordance to ASTM A36 Steel, Min. 3/16" thick, bolted to guides for mounting curtain and barrel assembly. Drive side bracket shall be fitted with a sealed ball bearing for long life.
- 4) BARREL - Structural steel pipe, Minimum 4 1/2" O.D. x .120" wall thickness and designed to limit maximum deflection, under load, to .03" per foot of span.
- 5) SPRING COUNTERBALANCE - The curtain shall be counterbalanced by means of oil tempered, helical torsion springs, grease-packed and mounted on a single continuous steel torsion shaft. Springs shall be compression spring design to facilitate any counterbalance maintenance. Cast iron spring anchors shall transfer full spring loading to the barrel.
- 6) HOOD - Shall be 24 ga. Commercial quality hot-dipped galvanized steel. Hood to have rolled edges to provide rigidity.
- 7) GUIDE HARDWARE - All bolts and washers shall be galvanized steel or stainless steel with a minimum bolt tensile strength of 60 K.S.I.
- 8) ENDLOCK/WINDLOCKS and ENDLOCKS - Shall be cast malleable iron, in accordance to ASTM A47 - GRADE 32510 with electroplating in accordance to ASTM B633, clear chromate, Min. .0007 zinc coating thickness.
- 9) CURTAIN FLAT SLAT - Interlocking slats rollformed from commercial quality hot dipped galvanized (G-90) steel per ASTM A653, Type 'B' (min. 30,000 psi) or stainless steel per ASTM 240, Type 304 (min. 30,000 psi). Malleable endlock/windlocks fastened to alternate slats with 2 rivets per lock, eliminates lateral movement and prevent slats from wearing at surfaces coming in contact with guides. Bottom of curtain shall be reinforced with 2 steel angles, Min. 2" x 2" x .130" or 2" x 2" x 3/16" stainless steel.
- 10) CURTAIN INSULATED SLAT - Interlocking slats rollformed from commercial quality hot dipped galvanized (G-90) steel per ASTM A653, Type 'B' (min. 30,000 psi) .or stainless steel per ASTM 240, Type 304 (min. 30,000 psi). Each slat shall have a 3/4" thick polyiso foamboard core placed within the full length of the slat. Backing cover rollformed from 24 ga. commercial quality hot dipped galvanized (G-60) steel per ASTM A653 or stainless steel per ASTM 240. Malleable endlock/windlocks fastened to alternate slats with 2 rivets per lock, eliminates lateral movement and prevent slats from wearing at surfaces coming in contact with guides. Bottom of curtain shall be reinforced with 2 steel angles, Min. 2" x 2" x .130" or 2" x 2" x 3/16" stainless steel.



Bottom Bar Standard Assembly

Malleable Cast Iron Endlock/Windlock



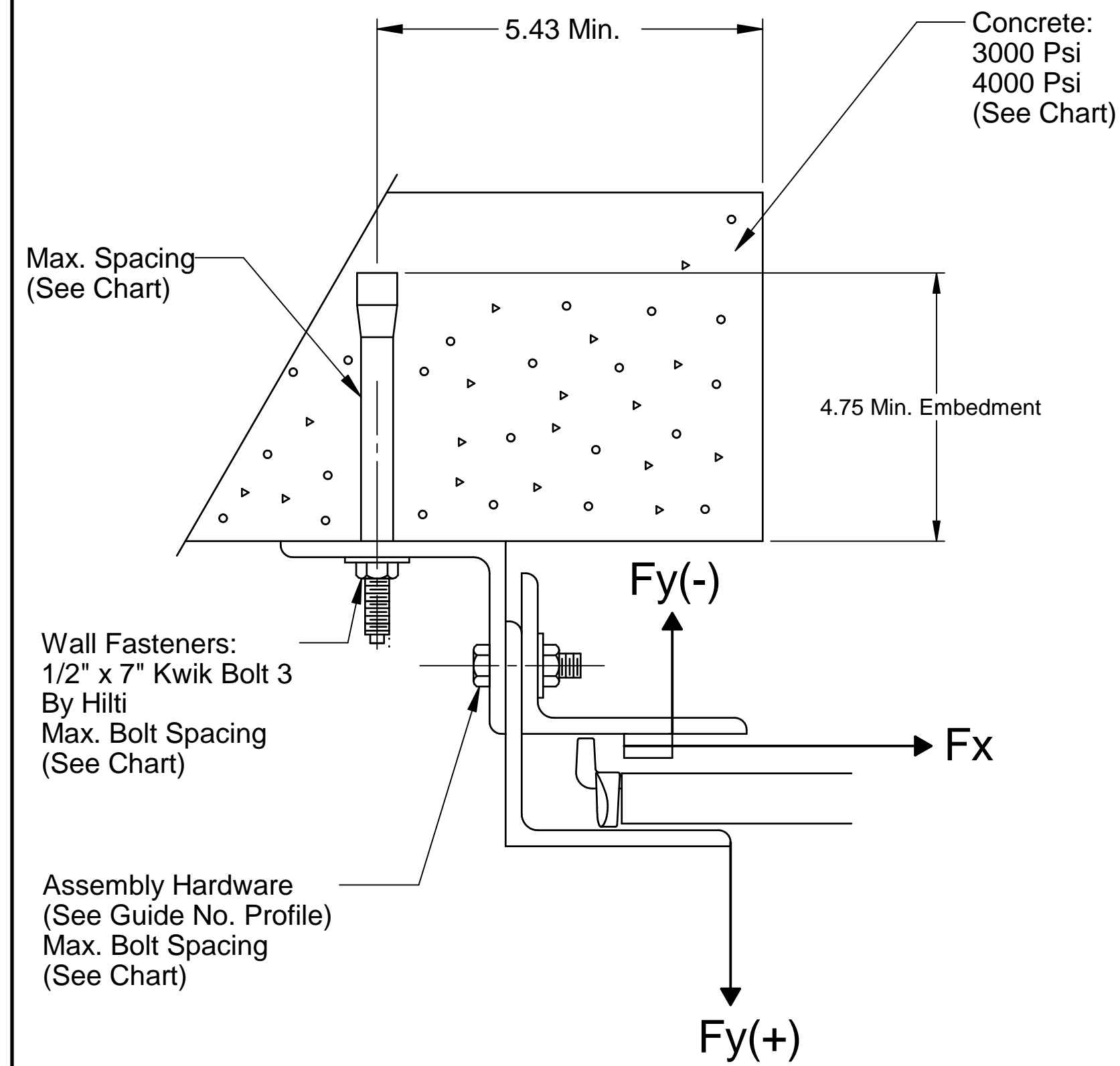
John E. Scates
2560 King Arthur Blvd, Ste 124-54
Lewisville, TX 75056
FL PE #51737
TX PE #56308-f2203

Professional Engineer's seal provided only for verification of wind load construction details.

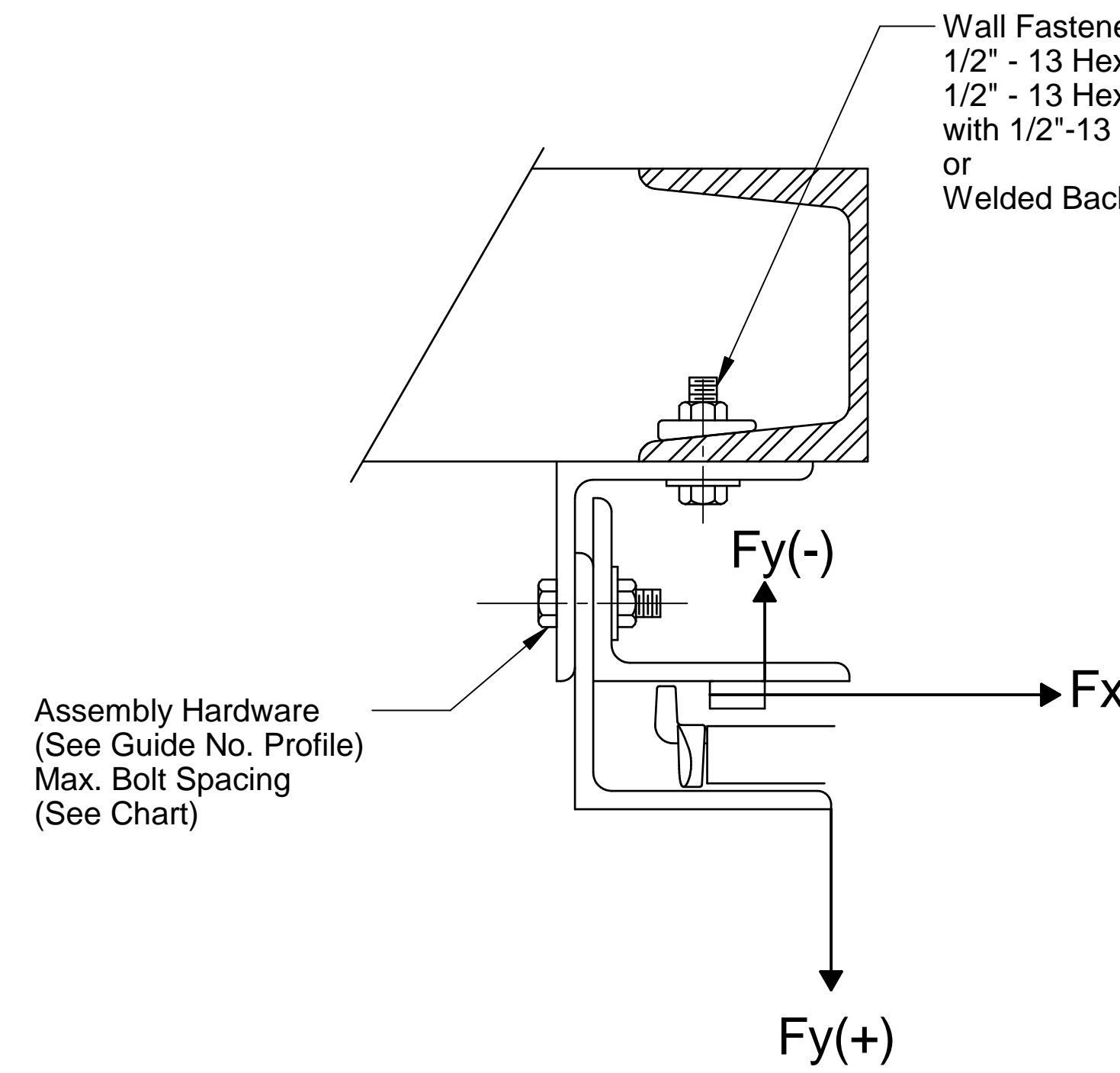
Scale: None	 1101 East River Road Dixon, IL 61021	Title: Specifications, Wind Load Doors for Texas Approvals	
Drawn by: M. Reutzel		No. P-2262	Sheet 2
Checked by: J. Bonnell			Rev C
Date: 07/21/16			
ECO: 7415.01			

Notes:

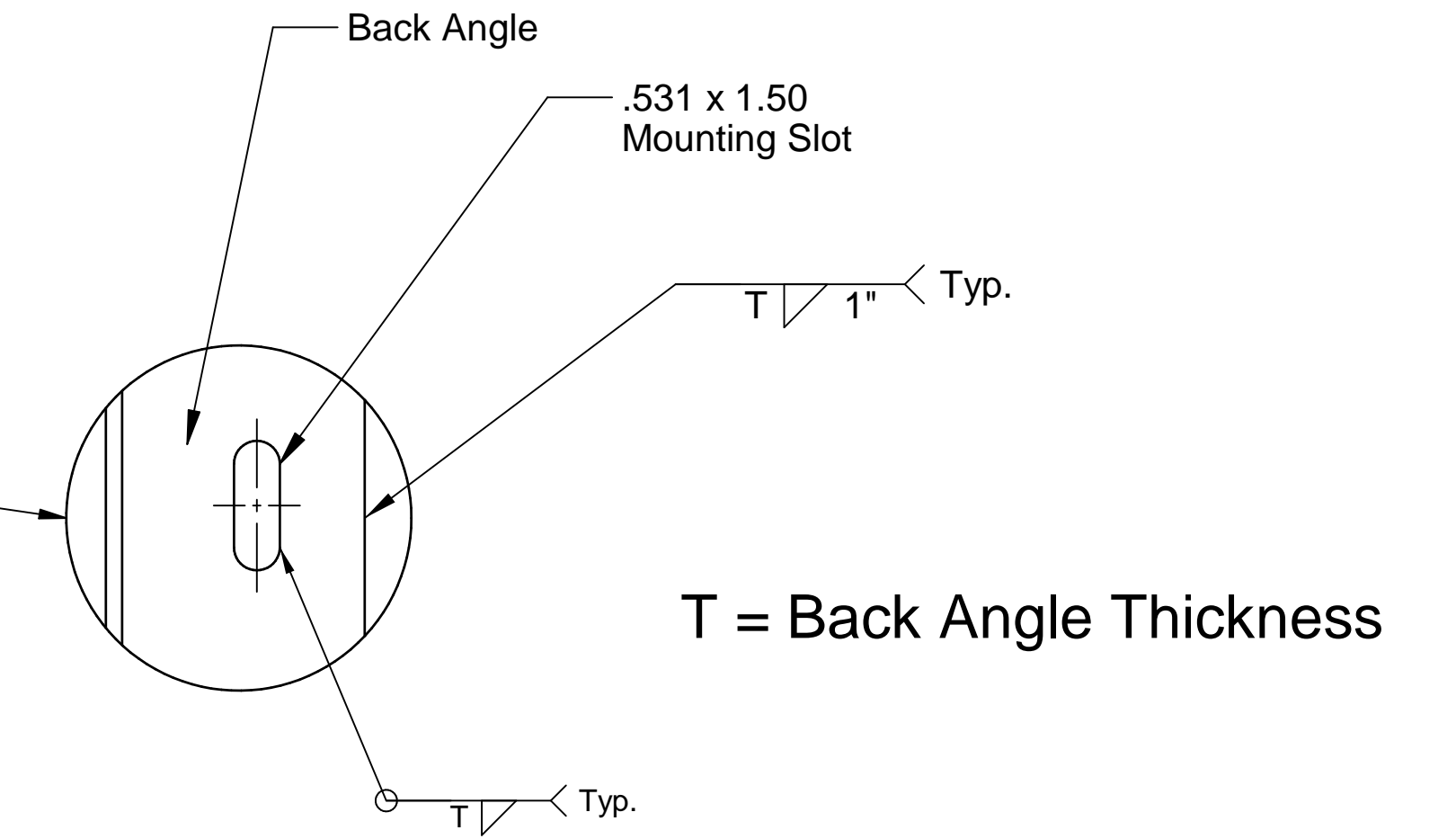
1. Building Designer Note: Structure must be designed to support the forces of "Fx" and "Fy" shown in chart
2. Fx and Fy are horizontal and vertical components of the reaction, resulting from windloads on the rolling steel door. The existing structure shall be capable of resisting Fx and Fy forces shown.



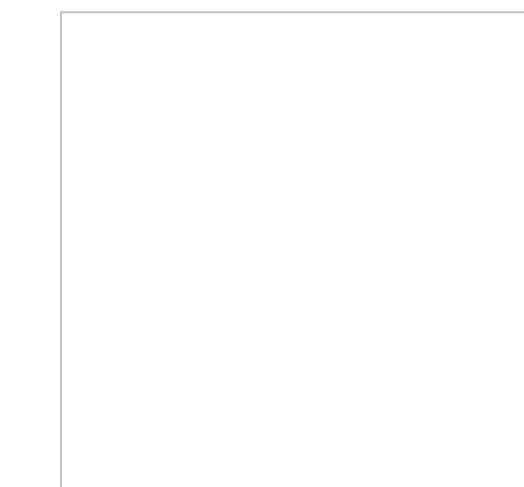
**Concrete Jamb - " Z " Mtd. (Shown)
or
Steel Jamb - "Z" Mtd.**



Steel Jamb - " E " Mtd.




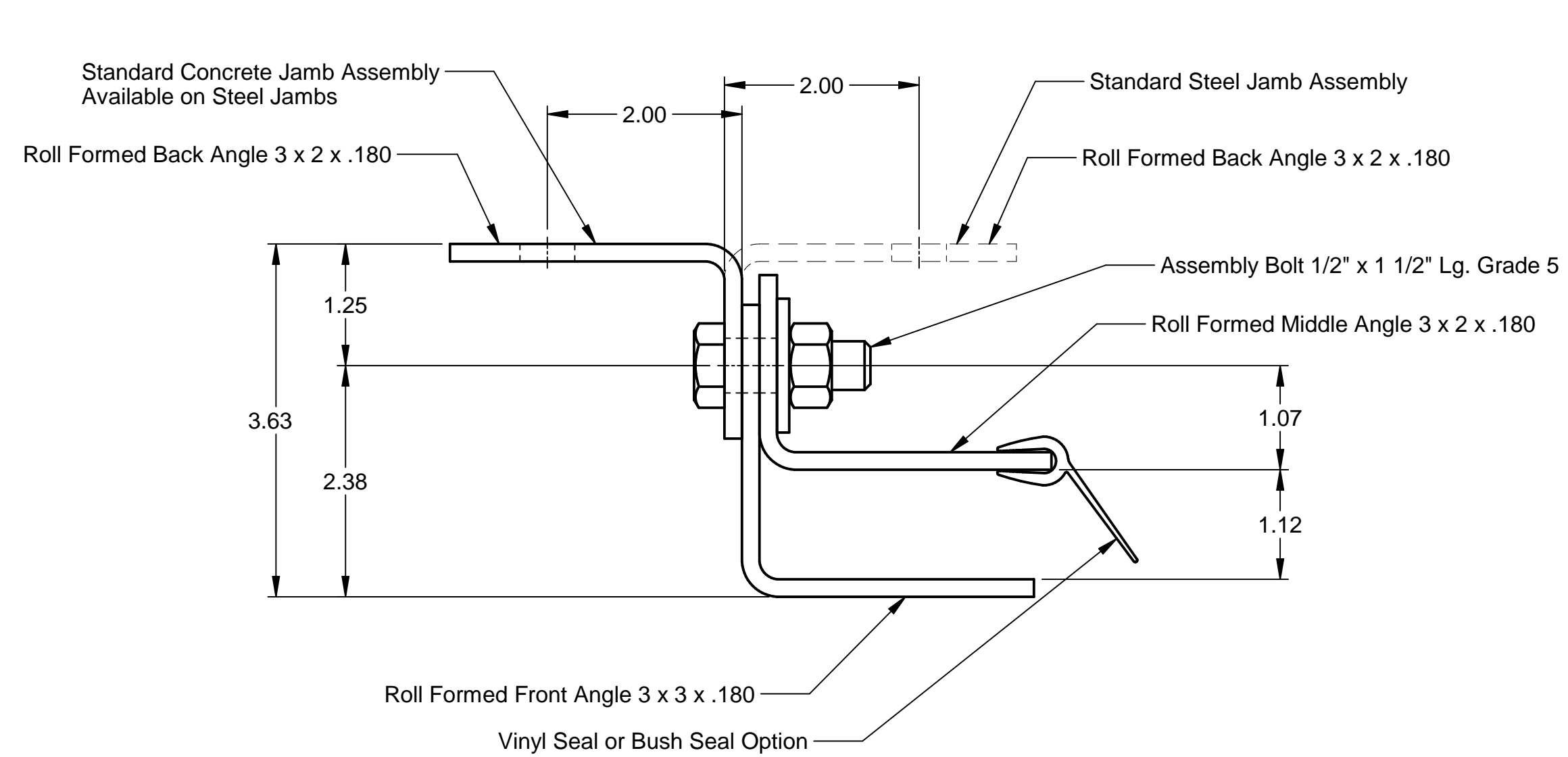
" Welding Detail "
(Weld may be used in lieu of
bolting at same bolt spacing)



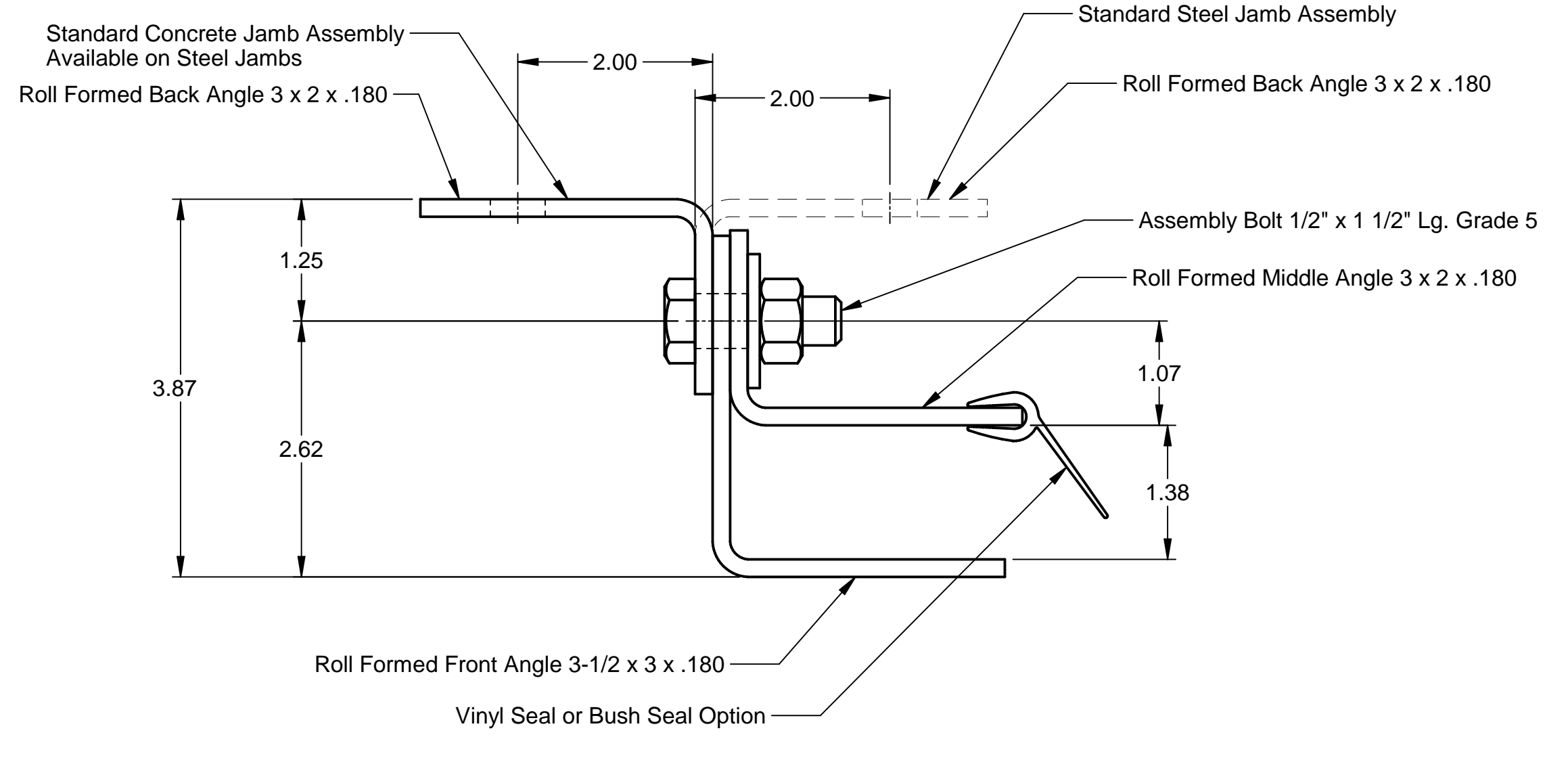
John E. Scates
2560 King Arthur Blvd, Ste 124-54
Lewisville, TX 75056
FL PE #51737
TX PE #56308-f2203

Professional Engineer's seal provided only for verification of
wind load construction details.

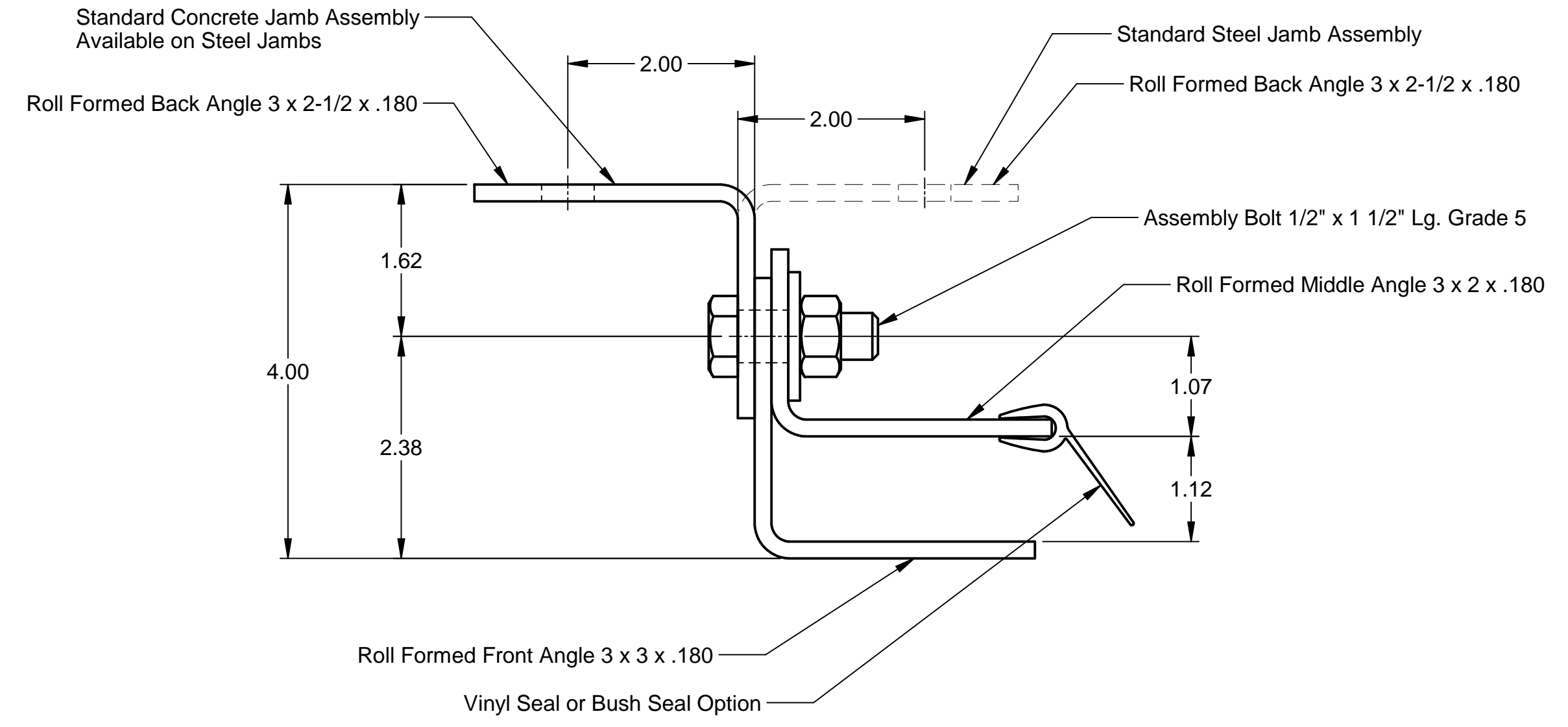
Scale: None	 1101 East River Road Dixon, IL 61021	Title: Specifications, Wind Load Doors for Texas Approvals	
Drawn by: M. Reutzel		No. P-2262	Sheet 3
Checked by: J. Bonnell			Rev C
Date: 07/21/16			
ECO: 7415.01			



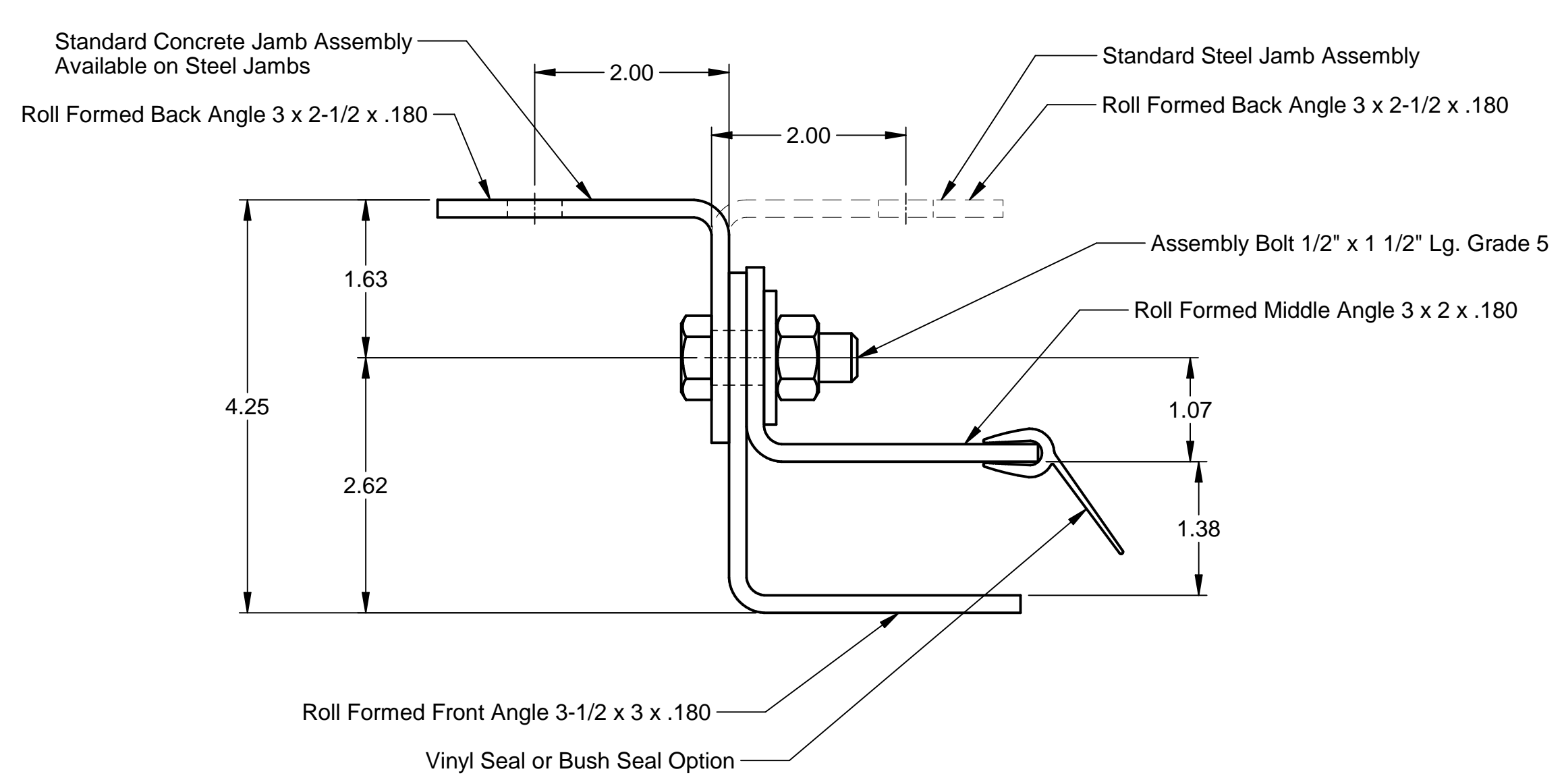
Guide Ass'y #89



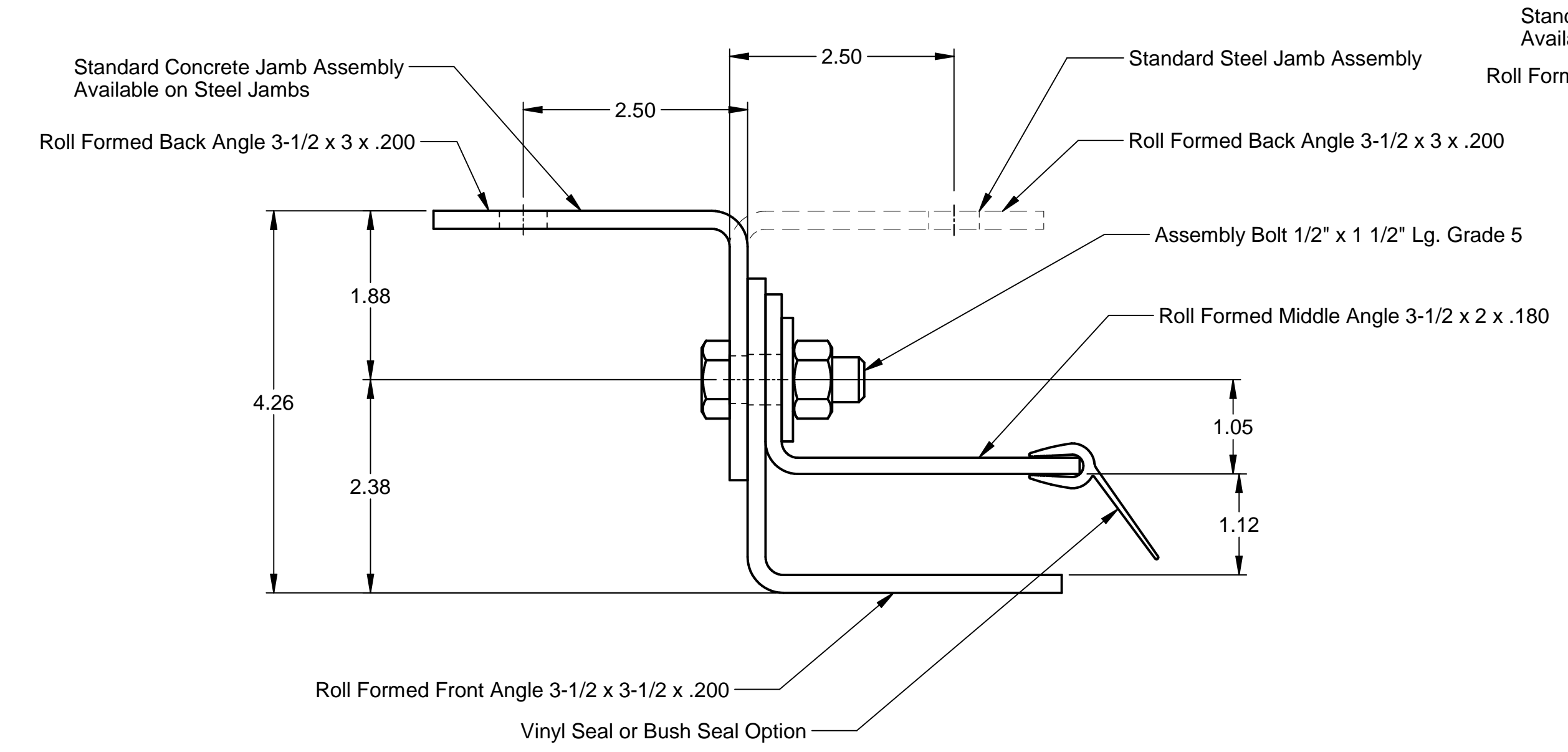
Guide Ass'y #92



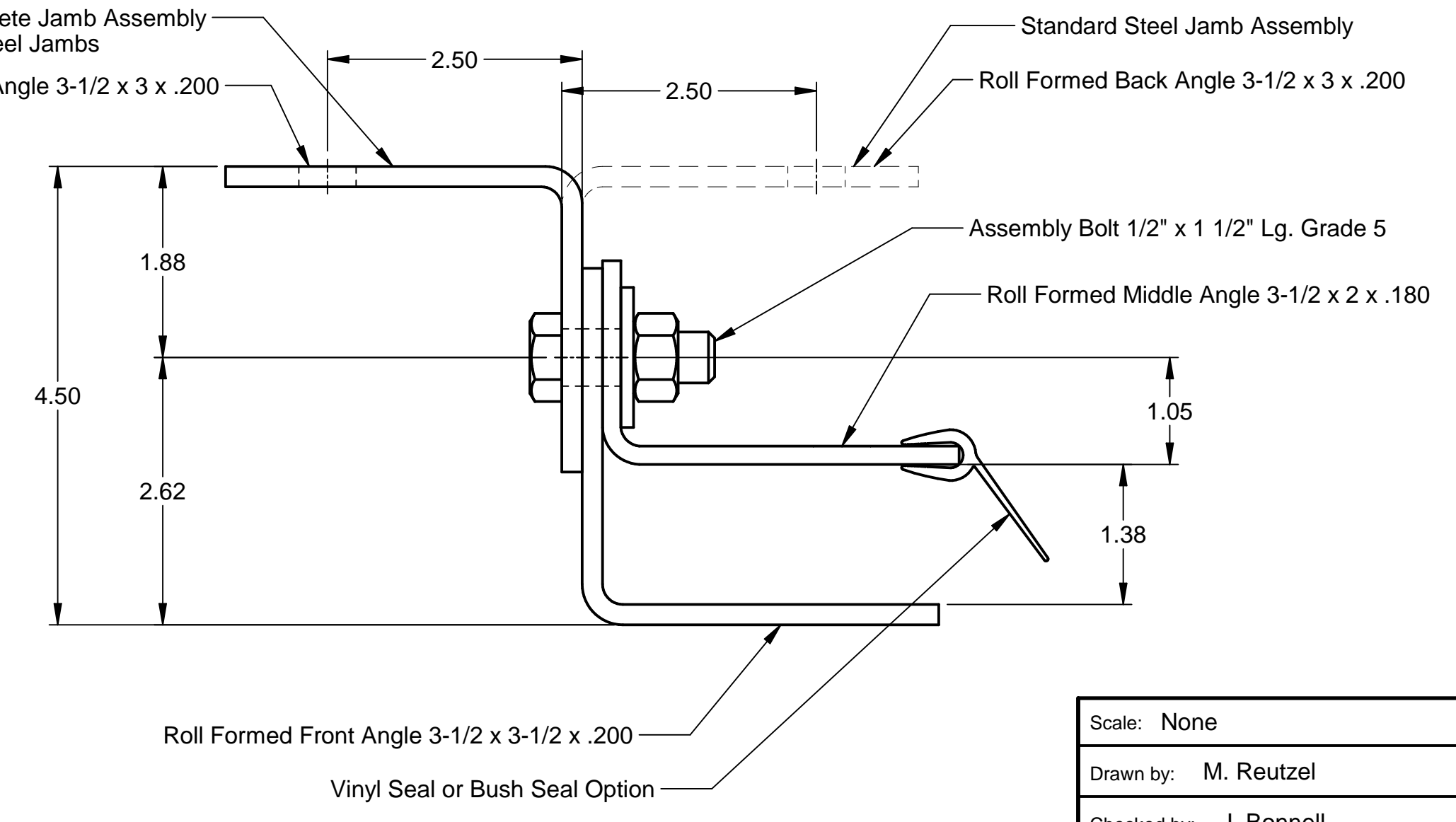
Guide Ass'y #90



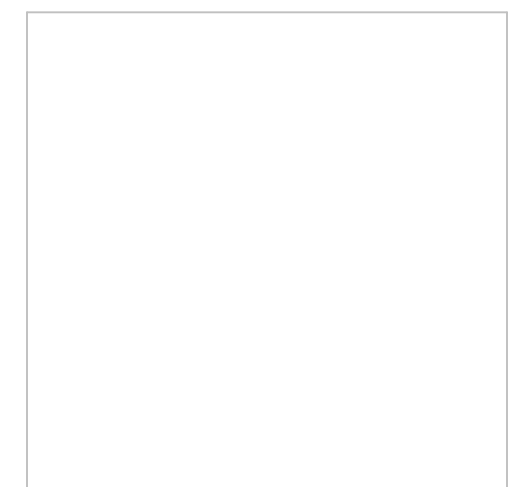
Guide Ass'y #93



Guide Ass'y #91



Guide Ass'y #94



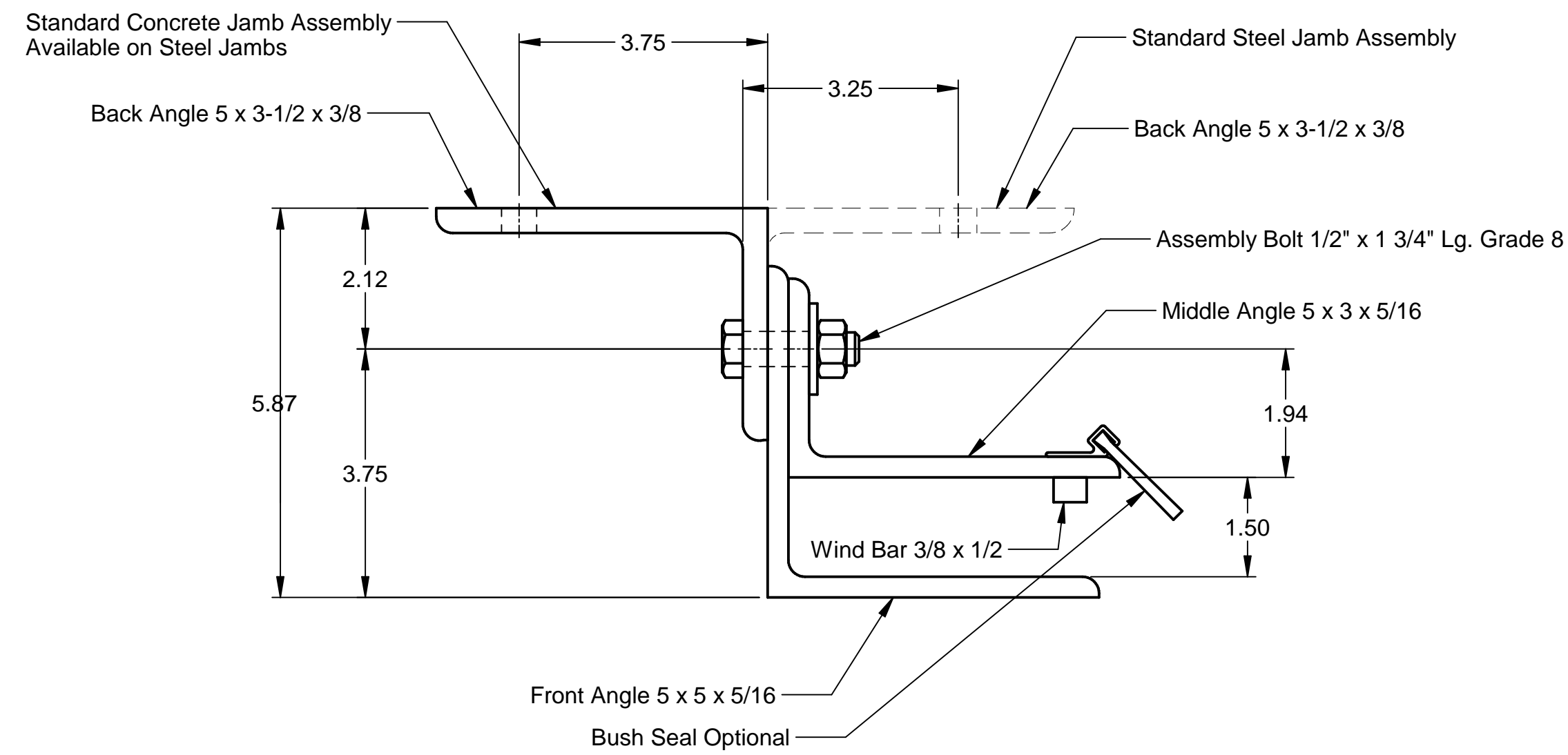
John E. Scates
 2560 King Arthur Blvd, Ste 124-54
 Lewisville, TX 75056
 FL PE #51737
 TX PE #56308-f2203

Professional Engineer's seal provided only for verification of wind load construction details.

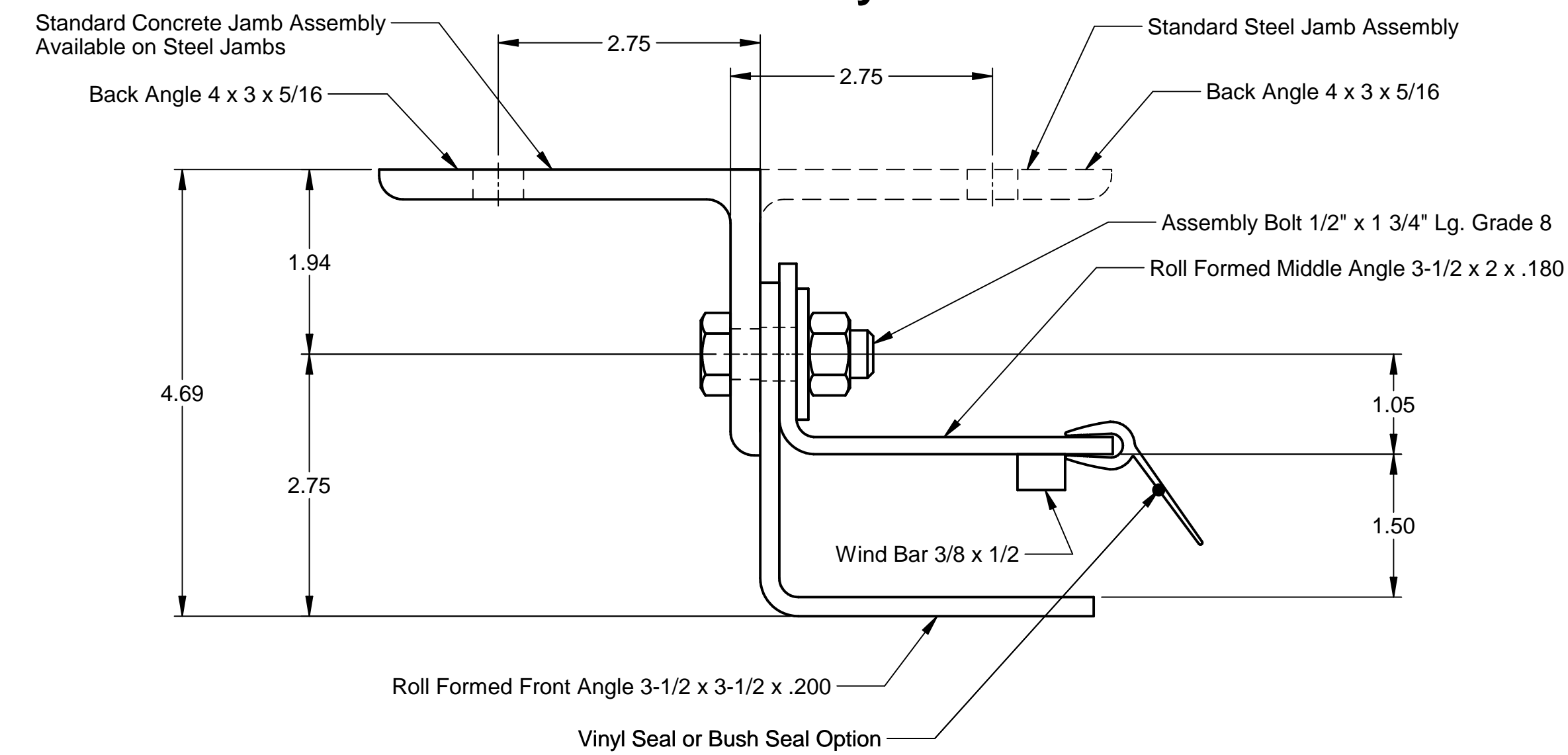
Scale: None
Drawn by: M. Reutzel
Checked by: J. Bonnell
Date: 07/21/16
ECO: 7415.01

RAYNOR
 1101 East River Road
 Dixon, IL 61021

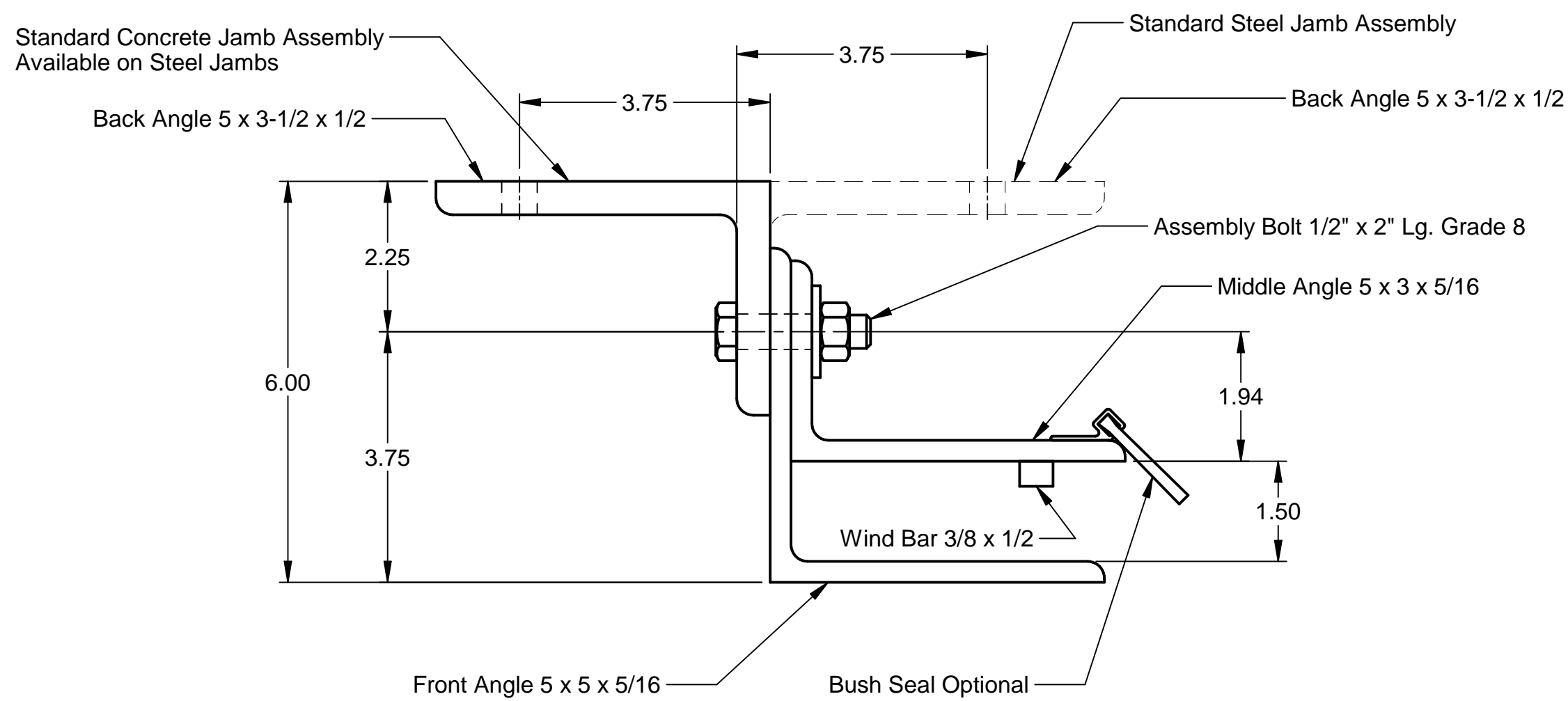
Title: Specifications, Wind Load Doors for Texas Approvals	
No. P-2262	Rev C
Sheet 4	



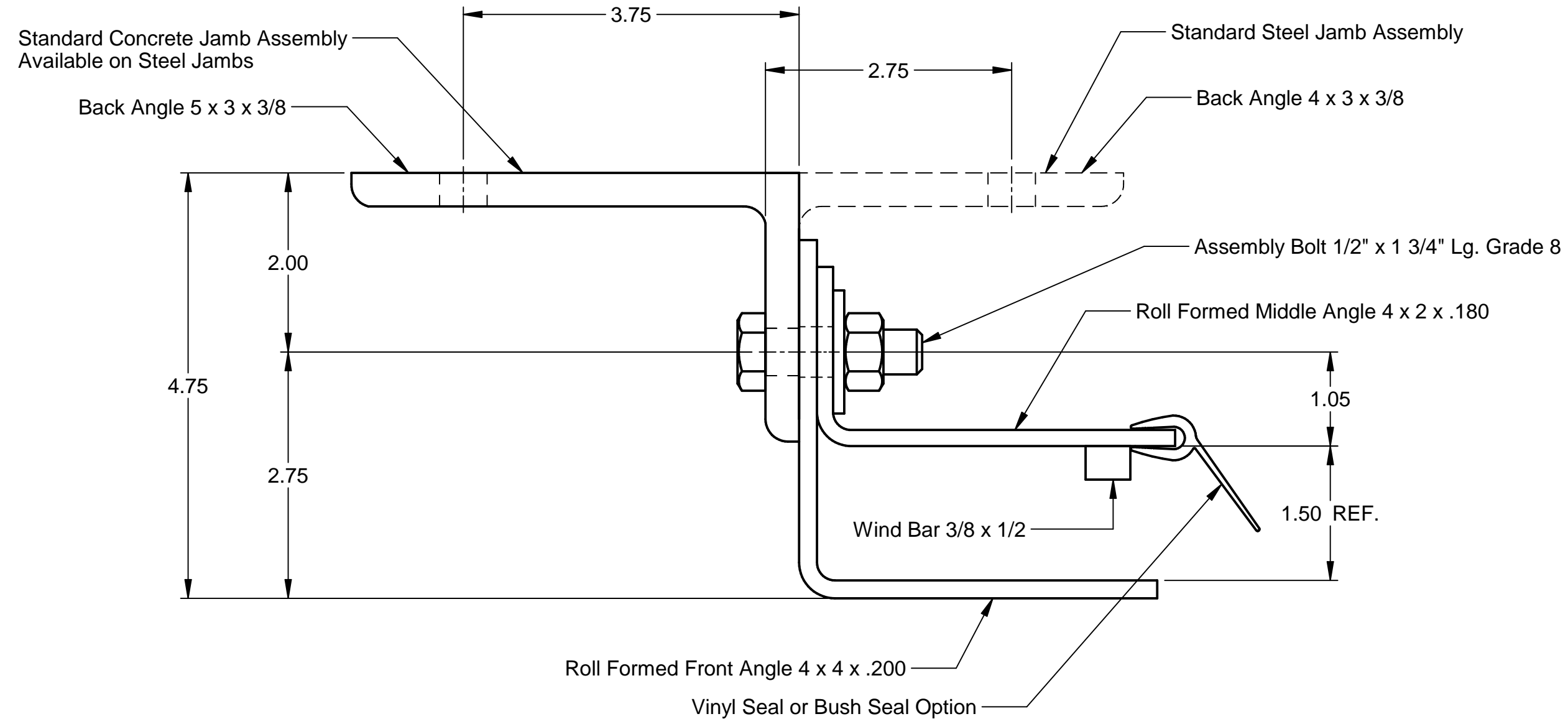
Guide Ass'y #104



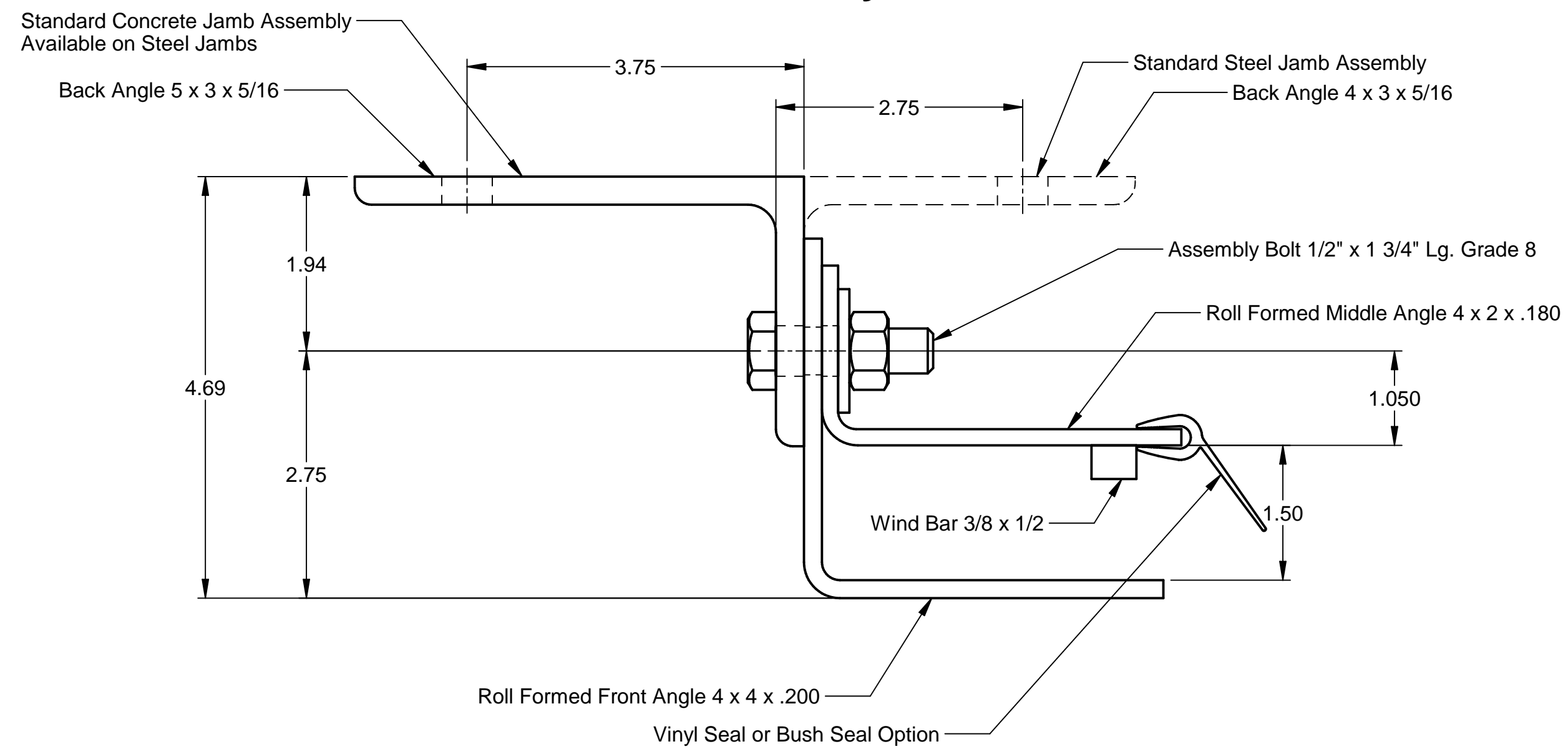
Guide Ass'y #105



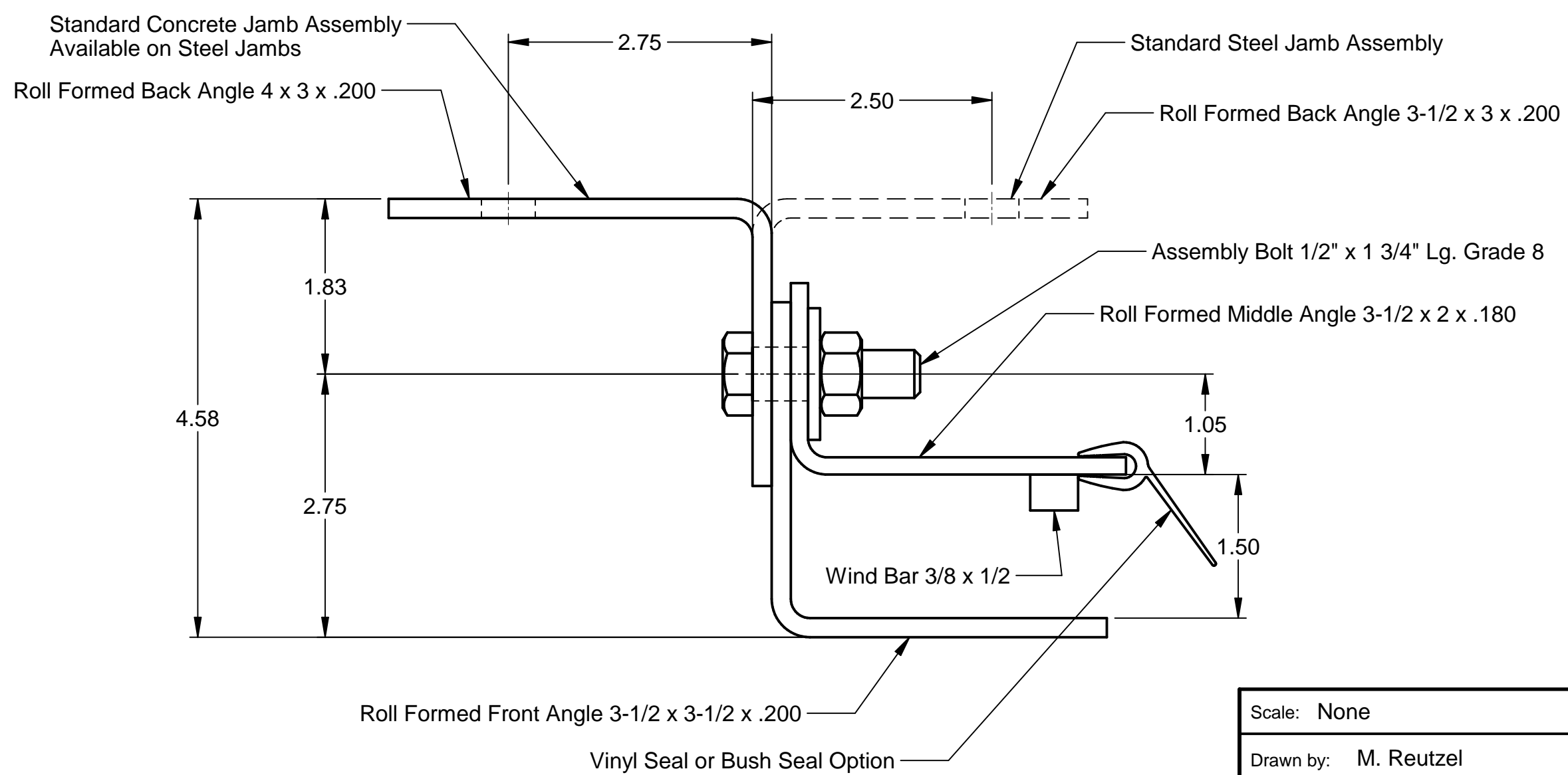
Guide Ass'y #106



Guide Ass'y #107



Guide Ass'y #110



Guide Ass'y #111



John E. Scates
 2560 King Arthur Blvd, Ste 124-54
 Lewisville, TX 75056
 FL PE #51737
 TX PE #56308-f2203

Professional Engineer's seal provided only for verification of wind load construction details.

Scale: None
Drawn by: M. Reutzel
Checked by: J. Bonnell
Date: 07/21/16
ECO: 7415.01



1101 East River Road
 Dixon, IL 61021

Title: Specifications, Wind Load Doors for Texas Approvals

No. P-2262

Sheet 5

Rev C

DuraCoil - Insulated Flat Slat 24 Ga.

Notes:
D.R. = Design Reference
N/A = Not Applicable

DuraCoil - Standard (Insulated Flat Slat 24 Ga.)												
20 PSF DESIGN LOAD												
Headplate Size	Door Opening Width Including	Std./Wind Bar	Guide Ass'y No.	Slat Length	Windlock Frequency	Slip	Wind Bar Location	Bolt Spacing Steel Jamb	Bolt Spacing Concrete Jamb 3000 PSI	Bolt Spacing Concrete Jamb 4000 PSI	Guide Load FX Lbs./Ft.	Guide Load FY Lbs./Ft.
16 - 30	20'	Wind Bar	111	D.R. - 3.00	2nd	1.000	2.125	24"	22"	24"	385	200

25 PSF DESIGN LOAD												
Headplate Size	Door Opening Width Including	Std./Wind Bar	Guide Ass'y No.	Slat Length	Windlock Frequency	Slip	Wind Bar Location	Bolt Spacing Steel Jamb	Bolt Spacing Concrete Jamb 3000 PSI	Bolt Spacing Concrete Jamb 4000 PSI	Guide Load FX Lbs./Ft.	Guide Load FY Lbs./Ft.
16 - 30	19'	Wind Bar	111	D.R. - 3.00	2nd	1.000	2.125	24"	19"	21"	471	238
18 - 30	20'		105			1.000	2.125		16"	17"	609	250

30 PSF DESIGN LOAD												
Headplate Size	Door Opening Width Including	Std./Wind Bar	Guide Ass'y No.	Slat Length	Windlock Frequency	Slip	Wind Bar Location	Bolt Spacing Steel Jamb	Bolt Spacing Concrete Jamb 3000 PSI	Bolt Spacing Concrete Jamb 4000 PSI	Guide Load FX Lbs./Ft.	Guide Load FY Lbs./Ft.
16 - 30	17'	Wind Bar	111	D.R. - 3.00	2nd	1.000	2.125	24"	20"	22"	346	255
18 - 30	20'		105			1.000	2.125	22"	12"	14"	832	300

35 PSF DESIGN LOAD												
Headplate Size	Door Opening Width Including	Std./Wind Bar	Guide Ass'y No.	Slat Length	Windlock Frequency	Slip	Wind Bar Location	Bolt Spacing Steel Jamb	Bolt Spacing Concrete Jamb 3000 PSI	Bolt Spacing Concrete Jamb 4000 PSI	Guide Load FX Lbs./Ft.	Guide Load FY Lbs./Ft.
16 - 30	16'	Wind Bar	111	D.R. - 3.00	2nd	1.000	2.125	24"	19"	21"	324	280
18 - 30	20'		110	D.R. - 3.75		1.125	2.625	22"	14"	16"	966	350

40 PSF DESIGN LOAD												
Headplate Size	Door Opening Width Including	Std./Wind Bar	Guide Ass'y No.	Slat Length	Windlock Frequency	Slip	Wind Bar Location	Bolt Spacing Steel Jamb	Bolt Spacing Concrete Jamb 3000 PSI	Bolt Spacing Concrete Jamb 4000 PSI	Guide Load FX Lbs./Ft.	Guide Load FY Lbs./Ft.
16 - 30	14'	Wind Bar	111	D.R. - 3.00	2nd	0.75	1.875	24"	22"	24"	170	280
18 - 30	18'		110	D.R. - 3.75		1.125	2.625	24"	15"	17"	811	360
	20'		104	D.R. - 4.25		1.875	3.625	19"	12"	13"	797	400

45 PSF DESIGN LOAD												
Headplate Size	Door Opening Width Including	Std./Wind Bar	Guide Ass'y No.	Slat Length	Windlock Frequency	Slip	Wind Bar Location	Bolt Spacing Steel Jamb	Bolt Spacing Concrete Jamb 3000 PSI	Bolt Spacing Concrete Jamb 4000 PSI	Guide Load FX Lbs./Ft.	Guide Load FY Lbs./Ft.
16 - 30	14'	Wind Bar	111	D.R. - 3.00	2nd	0.812	1.937	24"	19"	20"	268	315
18 - 30	17'		110	D.R. - 3.75		1.125	2.625	23"	15"	17"	782	383
	20'		104	D.R. - 4.25		2.062	3.812	17"	N/A	11"	892	450

50 PSF DESIGN LOAD												
Headplate Size	Door Opening Width Including	Std./Wind Bar	Guide Ass'y No.	Slat Length	Windlock Frequency	Slip	Wind Bar Location	Bolt Spacing Steel Jamb	Bolt Spacing Concrete Jamb 3000 PSI	Bolt Spacing Concrete Jamb 4000 PSI	Guide Load FX Lbs./Ft.	Guide Load FY Lbs./Ft.
16 - 30	12'	Wind Bar	111	D.R. - 3.00	2nd	0.500	1.625	24"	22"	24"	55	300
18 - 30	16'		110	D.R. - 3.75		1.125	2.625	23"	15"	17"	713	400


55 PSF DESIGN LOAD												
Headplate Size	Door Opening Width Including	Std./Wind Bar	Guide Ass'y No.	Slat Length	Windlock Frequency	Slip	Wind Bar Location	Bolt Spacing Steel Jamb	Bolt Spacing Concrete Jamb 3000 PSI	Bolt Spacing Concrete Jamb 4000 PSI	Guide Load FX Lbs./Ft.	Guide Load FY Lbs./Ft.
16 - 30	11'	Wind Bar	111	D.R. - 3.00	2nd	0.375	1.500	24"	23"	24"	0	303
18 - 30	15'		110	D.R. - 3.75		1.000	2.500	23"	15"	17"	692	413
	16'		104	D.R. - 4.25		1.437	3.187	16"	N/A	11"	672	440

60 PSF DESIGN LOAD												
Headplate Size	Door Opening Width Including	Std./Wind Bar	Guide Ass'y No.	Slat Length	Windlock Frequency	Slip	Wind Bar Location	Bolt Spacing Steel Jamb	Bolt Spacing Concrete Jamb 3000 PSI	Bolt Spacing Concrete Jamb 4000 PSI	Guide Load FX Lbs./Ft.	Guide Load FY Lbs./Ft.
18 - 30	15'	Wind Bar	110	D.R. - 3.75	2nd	0.812	2.312	23"	15"	16"	1029	450
	16'		104	D.R. - 4.25		1.218	2.968	16"	N/A	11"	944	480



John E. Scates
2560 King Arthur Blvd, Ste 124-54
Lewisville, TX 75056
FL PE #51737
TX PE #56308-f2203

Professional Engineer's seal provided only for verification of wind load construction details.

Scale: None	 <p>1101 East River Road Dixon, IL 61021</p>	Title: Specifications, Wind Load Doors for Texas Approvals	
Drawn by: M. Reutzel		No. P-2262	Sheet 6
Checked by: J. Bonnell			Rev C
Date: 07/21/16			
ECO: 7415.01			

DuraCoil - Insulated Flat Slat 22 Ga.

Notes:
D.R. = Design Reference
N/A = Not Applicable

20 PSF DESIGN LOAD												
Headplate Size	Door Opening Width Including	Std./Wind Bar	Guide Assy No.	Slat Length	Windlock Frequency	Slip	Wind Bar Location	Bolt Spacing Steel Jams	Bolt Spacing Concrete Jams 3000 PSI	Bolt Spacing Concrete Jams 4000 PSI	Guide Load FX Lbs./Ft.	Guide Load FY Lbs./Ft.
12 - 16	17'-3"	Std.	92	D.R. - 2.00	N/A	N/A	N/A	24"	18"	19"	0	173
18 - 22			93	D.R. - 2.25				24"	18"	19"		
24 - 30			94	D.R. - 2.75				24"	18"	19"		
16 - 30	21'	Wind Bar	111	D.R. - 3.00	2nd	1.000	2.125	24"	21"	23"	430	210
18 - 30	24'		105	D.R. - 3.00				24"	14"	15"		

25 PSF DESIGN LOAD														
Headplate Size	Door Opening Width Including	Std./Wind Bar	Guide Assy No.	Slat Length	Windlock Frequency	Slip	Wind Bar Location	Bolt Spacing Steel Jams	Bolt Spacing Concrete Jams 3000 PSI	Bolt Spacing Concrete Jams 4000 PSI	Guide Load FX Lbs./Ft.	Guide Load FY Lbs./Ft.		
12 - 16	15'-5"	Std.	92	D.R. - 2.00	N/A	N/A	N/A	24"	16"	17"	0	193		
18 - 22			93	D.R. - 2.25				24"	16"	17"				
24 - 30			94	D.R. - 2.75				24"	16"	17"				
16 - 30	19'	Wind Bar	111	D.R. - 3.00	2nd	1.000	2.125	24"	20"	22"	384	238		
18 - 30	22'		105	D.R. - 3.00				24"	13"	14"			804	275
	24'		110	D.R. - 3.75				23"	15"	17"			978	300

30 PSF DESIGN LOAD														
Headplate Size	Door Opening Width Including	Std./Wind Bar	Guide Assy No.	Slat Length	Windlock Frequency	Slip	Wind Bar Location	Bolt Spacing Steel Jams	Bolt Spacing Concrete Jams 3000 PSI	Bolt Spacing Concrete Jams 4000 PSI	Guide Load FX Lbs./Ft.	Guide Load FY Lbs./Ft.		
12 - 16	14'-1"	Std.	92	D.R. - 2.00	N/A	N/A	N/A	24"	14"	16"	0	212		
18 - 22			93	D.R. - 2.25				24"	14"	16"				
24 - 30			94	D.R. - 2.75				24"	14"	16"				
16 - 30	17'	Wind Bar	111	D.R. - 3.00	2nd	1.000	2.125	24"	22"	24"	239	255		
18 - 30	20'		105	D.R. - 3.00				19"	13"	14"			754	300
	24'		107	D.R. - 3.75				19"	12"	13"			1255	360

35 PSF DESIGN LOAD														
Headplate Size	Door Opening Width Including	Std./Wind Bar	Guide Assy No.	Slat Length	Windlock Frequency	Slip	Wind Bar Location	Bolt Spacing Steel Jams	Bolt Spacing Concrete Jams 3000 PSI	Bolt Spacing Concrete Jams 4000 PSI	Guide Load FX Lbs./Ft.	Guide Load FY Lbs./Ft.		
12 - 16	13'-0"	Std.	92	D.R. - 2.00	N/A	N/A	N/A	24"	13"	15"	0	228		
18 - 22			93	D.R. - 2.25				24"	13"	15"				
24 - 30			94	D.R. - 2.75				24"	13"	15"				
16 - 30	16'	Wind Bar	111	D.R. - 3.00	2nd	1.000	2.125	24"	22"	24"	202	280		
18 - 30	19'		105	D.R. - 3.00				22"	12"	13"			799	333
	22'		107	D.R. - 3.75				19"	12"	13"			1217	385
	24'		104	D.R. - 4.25		2.062	3.812	16"	N/A	11"	1025	420		

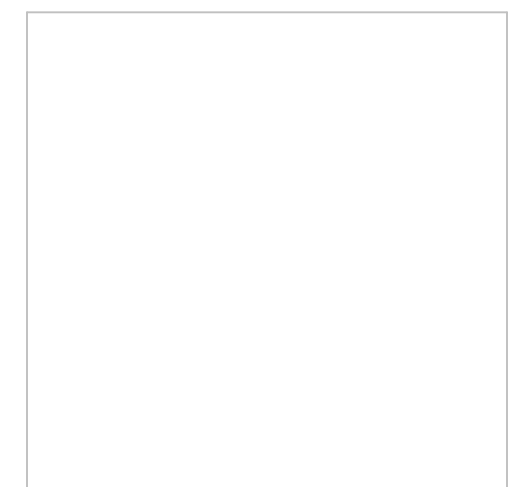
40 PSF DESIGN LOAD																
Headplate Size	Door Opening Width Including	Std./Wind Bar	Guide Assy No.	Slat Length	Windlock Frequency	Slip	Wind Bar Location	Bolt Spacing Steel Jams	Bolt Spacing Concrete Jams 3000 PSI	Bolt Spacing Concrete Jams 4000 PSI	Guide Load FX Lbs./Ft.	Guide Load FY Lbs./Ft.				
12 - 16	12'-2"	Std.	92	D.R. - 2.00	N/A	N/A	N/A	24"	12"	14"	0	244				
18 - 22			93	D.R. - 2.25				24"	12"	14"						
24 - 30			94	D.R. - 2.75				24"	12"	14"						
16 - 30	15'	Wind Bar	111	D.R. - 3.00	2nd	0.875	2.000	24"	20"	22"	198	300				
18 - 30	18'		105	D.R. - 3.00				21"	11"	13"			802	360		
	20'		107	D.R. - 3.75				19"	12"	13"			1099	400		
	22'		104	D.R. - 4.25				2.062	3.812	16"			N/A	11"	952	440
	23'		106	D.R. - 4.25				1.875	3.625	14"			N/A	N/A	1167	460

45 PSF DESIGN LOAD																
Headplate Size	Door Opening Width Including	Std./Wind Bar	Guide Assy No.	Slat Length	Windlock Frequency	Slip	Wind Bar Location	Bolt Spacing Steel Jams	Bolt Spacing Concrete Jams 3000 PSI	Bolt Spacing Concrete Jams 4000 PSI	Guide Load FX Lbs./Ft.	Guide Load FY Lbs./Ft.				
12 - 16	9'-2"	Std.	92	D.R. - 2.00	N/A	N/A	N/A	24"	15"	16"	0	207				
18 - 22			93	D.R. - 2.25				24"	15"	16"						
24 - 30			94	D.R. - 2.75				24"	15"	16"						
16 - 30	14'	Wind Bar	111	D.R. - 3.00	2nd	0.875	2.000	24"	22"	24"	61	315				
18 - 30	17'		105	D.R. - 3.00				20"	11"	12"			764	383		
	19'		107	D.R. - 3.75				19"	12"	13"			1106	428		
	20'		104	D.R. - 4.25				2.062	3.812	17"			11"	12"	814	450
	22'		106	D.R. - 4.25				1.875	3.625	14"			N/A	N/A	1210	495

50 PSF DESIGN LOAD																
Headplate Size	Door Opening Width Including	Std./Wind Bar	Guide Assy No.	Slat Length	Windlock Frequency	Slip	Wind Bar Location	Bolt Spacing Steel Jams	Bolt Spacing Concrete Jams 3000 PSI	Bolt Spacing Concrete Jams 4000 PSI	Guide Load FX Lbs./Ft.	Guide Load FY Lbs./Ft.				
12 - 16	8'-9"	Std.	92	D.R. - 2.00	N/A	N/A	N/A	24"	14"	15"	0	219				
18 - 22			93	D.R. - 2.25				24"	14"	15"						
24 - 30			94	D.R. - 2.75				24"	14"	15"						
16 - 30	13'	Wind Bar	111	D.R. - 3.00	2nd	0.750	1.875	24"	24"	24"	0	325				
18 - 30	16'		105	D.R. - 3.00				21"	12"	13"			682	400		
	18'		107	D.R. - 3.75				18"	12"	13"			1075	450		
	19'		104	D.R. - 4.25				2.062	3.812	17"			N/A	11"	791	475
	21'		106	D.R. - 4.25				1.937	3.687	13"			N/A	N/A	1196	525


55 PSF DESIGN LOAD																
Headplate Size	Door Opening Width Including	Std./Wind Bar	Guide Assy No.	Slat Length	Windlock Frequency	Slip	Wind Bar Location	Bolt Spacing Steel Jams	Bolt Spacing Concrete Jams 3000 PSI	Bolt Spacing Concrete Jams 4000 PSI	Guide Load FX Lbs./Ft.	Guide Load FY Lbs./Ft.				
12 - 16	8'-4"	Std.	92	D.R. - 2.00	N/A	N/A	N/A	24"	13"	14"	0	230				
18 - 22			93	D.R. - 2.25				24"	13"	14"						
24 - 30			94	D.R. - 2.75				24"	13"	14"						
16 - 30	13'	Wind Bar	111	D.R. - 3.00	2nd	0.750	1.875	24"	19"	21"	98	358				
18 - 30	15'		105	D.R. - 3.00				22"	12"	14"			554	413		
	17'		107	D.R. - 3.75				19"	12"	13"			1004	468		
	18'		104	D.R. - 4.25				2.062	3.812	17"			N/A	11"	737	495
	20'		106	D.R. - 4.25				1.937	3.687	13"			N/A	N/A	1180	550

60 PSF DESIGN LOAD														
Headplate Size	Door Opening Width Including	Std./Wind Bar	Guide Assy No.	Slat Length	Wind Bar Location	Slip	Wind Bar Location	Bolt Spacing Steel Jams	Bolt Spacing Concrete Jams 3000 PSI	Bolt Spacing Concrete Jams 4000 PSI	Guide Load FX Lbs./Ft.	Guide Load FY Lbs./Ft.		
12 - 16	8'-0"	Std.	92	D.R. - 2.00	N/A	N/A	N/A	24"	13"	14"	0	240		
18 - 22			93	D.R. - 2.25				24"	13"	14"				
24 - 30			94	D.R. - 2.75				24"	13"	14"				
16 - 30	12'	Wind Bar	111	D.R. - 3.00	2nd	0.562	1.687	24"	19"	21"	32	360		
18 - 30	15'		105	D.R. - 3.00				19"	11"	12"			699	450
	16'		107	D.R. - 3.75				1.125	2.625	19"			12"	14"



John E. Scates
2560 King Arthur Blvd, Ste 124-54
Lewisville, TX 75056
FL PE #51737
TX PE #56308-f2203

Professional Engineer's seal provided only for verification of wind load construction details.

Scale: None	 <p>1101 East River Road Dixon, IL 61021</p>	Title: Specifications, Wind Load Doors for Texas Approvals	
Drawn by: M. Reutzel		No. P-2262	Sheet 7
Checked by: J. Bonnell			Rev C
Date: 07/21/16 ECO: 7415.01			

DuraCoil - Flat Slat 22 Ga.

Notes:
D.R. = Design Reference
N/A = Not Applicable

20 PSF DESIGN LOAD												
Headplate Size	Door Opening Width Including	Std./Wind Bar	Guide Ass'y No.	Slat Length	Windlock Frequency	Slip	Wind Bar Location	Bolt Spacing Steel Jams	Bolt Spacing Concrete Jams 3000 PSI	Bolt Spacing Concrete Jams 4000 PSI	Guide Load FX Lbs./Ft.	Guide Load FY Lbs./Ft.
12 - 16	14'-7"	Std.	89	D.R. - 2.00	N/A	N/A	N/A	24"	21"	23"	0	146
18 - 22			90	D.R. - 2.25				24"	21"	23"		
24 - 30			91	D.R. - 2.75				24"	18"	20"		
16 - 30	20'	Wind Bar	111	D.R. - 3.00	2nd	1.000	2.125	24"	18"	20"	625	200
18 - 30	22'		105						1.000	2.125	15"	16"

25 PSF DESIGN LOAD														
Headplate Size	Door Opening Width Including	Std./Wind Bar	Guide Ass'y No.	Slat Length	Windlock Frequency	Slip	Wind Bar Location	Bolt Spacing Steel Jams	Bolt Spacing Concrete Jams 3000 PSI	Bolt Spacing Concrete Jams 4000 PSI	Guide Load FX Lbs./Ft.	Guide Load FY Lbs./Ft.		
12 - 16	13'-0"	Std.	89	D.R. - 2.00	N/A	N/A	N/A	24"	19"	21"	0	163		
18 - 22			90	D.R. - 2.25				24"	19"	21"				
24 - 30			91	D.R. - 2.75				24"	16"	18"				
16 - 30	17'	Wind Bar	111	D.R. - 3.00	2nd	1.000	2.125	24"	20"	22"	504	213		
18 - 30	20'		105						1.000	2.125	14"	15"	849	250
	22'		110						1.125	2.625	16"	17"	994	275

30 PSF DESIGN LOAD														
Headplate Size	Door Opening Width Including	Std./Wind Bar	Guide Ass'y No.	Slat Length	Windlock Frequency	Slip	Wind Bar Location	Bolt Spacing Steel Jams	Bolt Spacing Concrete Jams 3000 PSI	Bolt Spacing Concrete Jams 4000 PSI	Guide Load FX Lbs./Ft.	Guide Load FY Lbs./Ft.		
12 - 16	9'-10"	Std.	89	D.R. - 2.00	N/A	N/A	N/A	24"	21"	23"	0	148		
18 - 22			90	D.R. - 2.25				24"	21"	23"				
24 - 30			91	D.R. - 2.75				24"	18"	19"				
16 - 30	14'	Wind Bar	111	D.R. - 3.00	2nd	0.625	1.750	24"	21"	23"	444	210		
18 - 30	18'		105						1.000	2.125	14"	15"	813	270
	22'		107						1.125	2.625	20"	13"	14"	1237

35 PSF DESIGN LOAD												
Headplate Size	Door Opening Width Including	Std./Wind Bar	Guide Ass'y No.	Slat Length	Windlock Frequency	Slip	Wind Bar Location	Bolt Spacing Steel Jams	Bolt Spacing Concrete Jams 3000 PSI	Bolt Spacing Concrete Jams 4000 PSI	Guide Load FX Lbs./Ft.	Guide Load FY Lbs./Ft.
12 - 16	9'-1"	Std.	89	D.R. - 2.00	N/A	N/A	N/A	24"	19"	21"	0	159
18 - 22			90	D.R. - 2.25				24"	19"	21"		
24 - 30			91	D.R. - 2.75				24"	16"	18"		
16 - 30	12'	Wind Bar	111	D.R. - 3.00	2nd	0.375	1.500	24"	20"	21"	440	210
18 - 30	16'		105			0.875	2.000	24"	14"	15"	777	280
	20'		107			1.125	2.625	20"	13"	14"	1207	350
	22'		104			2.063	3.812	17"	N/A	11"	1035	385

40 PSF DESIGN LOAD												
Headplate Size	Door Opening Width Including	Std./Wind Bar	Guide Ass'y No.	Slat Length	Windlock Frequency	Slip	Wind Bar Location	Bolt Spacing Steel Jams	Bolt Spacing Concrete Jams 3000 PSI	Bolt Spacing Concrete Jams 4000 PSI	Guide Load FX Lbs./Ft.	Guide Load FY Lbs./Ft.
12 - 16	8'-6"	Std.	89	D.R. - 2.00	N/A	N/A	N/A	24"	18"	20"	0	170
18 - 22			90	D.R. - 2.25				24"	18"	20"		
24 - 30			91	D.R. - 2.75				24"	15"	17"		
18 - 30	16'	Wind Bar	105	D.R. - 3.00	2nd	0.937	2.063	22"	12"	13"	902	320
	18'		107			1.125	2.625	21"	13"	15"	1108	360
	20'		104			1.875	3.625	17"	N/A	11"	1037	400
	22'		106			1.937	3.687	14"	N/A	N/A	1260	440

45 PSF DESIGN LOAD												
Headplate Size	Door Opening Width Including	Std./Wind Bar	Guide Ass'y No.	Slat Length	Windlock Frequency	Slip	Wind Bar Location	Bolt Spacing Steel Jams	Bolt Spacing Concrete Jams 3000 PSI	Bolt Spacing Concrete Jams 4000 PSI	Guide Load FX Lbs./Ft.	Guide Load FY Lbs./Ft.
12 - 16	8'-0"	Std.	89	D.R. - 2.00	N/A	N/A	N/A	24"	17"	19"	0	180
18 - 22			90	D.R. - 2.25				24"	17"	19"		
24 - 30			91	D.R. - 2.75				24"	14"	16"		
18 - 30	13'	Wind Bar	105	D.R. - 3.00	2nd	0.500	1.625	23"	12"	13"	854	293
	16'		107			0.937	2.437	21"	14"	15"	1067	360
	18'		104			1.375	3.125	16"	N/A	11"	1133	405
	20'		106			1.937	3.687	14"	N/A	N/A	1177	450

50 PSF DESIGN LOAD												
Headplate Size	Door Opening Width Including	Std./Wind Bar	Guide Ass'y No.	Slat Length	Windlock Frequency	Slip	Wind Bar Location	Bolt Spacing Steel Jams	Bolt Spacing Concrete Jams 3000 PSI	Bolt Spacing Concrete Jams 4000 PSI	Guide Load FX Lbs./Ft.	Guide Load FY Lbs./Ft.
12 - 16	7'-7"	Std.	89	D.R. - 2.00	N/A	N/A	N/A	24"	16"	18"	0	190
18 - 22			90	D.R. - 2.25				24"	16"	18"		
24 - 30			91	D.R. - 2.75				24"	14"	15"		
18 - 30	14'	Wind Bar	107	D.R. - 3.75	2nd	0.625	2.125	21"	13"	14"	1107	350
	16'		106			1.125	2.875	15"	N/A	N/A	1088	400



John E. Scates
2560 King Arthur Blvd, Ste 124-54
Lewisville, TX 75056
FL PE #51737
TX PE #56308-f2203

Professional Engineer's seal provided only for verification of wind load construction details.

Scale: None		Title: Specifications, Wind Load Doors for Texas Approvals	
Drawn by: M. Reutzel		No. P-2262	Sheet 10
Checked by: J. Bonnell			Rev C
Date: 07/21/16 ECO: 7415.01		1101 East River Road Dixon, IL 61021	

DuraCoil - Flat Slat 18 Ga.

Notes:
D.R. = Design Reference
N/A = Not Applicable

20 PSF DESIGN LOAD														
Headplate Size	Door Opening Width Including	Std./Wind Bar	Guide Ass'y No.	Slat Length	Windlock Frequency	Slip	Wind Bar Location	Bolt Spacing Steel Jamb	Bolt Spacing Concrete Jamb 3000 PSI	Bolt Spacing Concrete Jamb 4000 PSI	Guide Load FX Lbs./Ft.	Guide Load FY Lbs./Ft.		
12 - 16	17'-3"	Std.	89	D.R. - 2.00	N/A	N/A	N/A	24"	18"	19"	0	173		
18 - 22			90	D.R. - 2.25				24"	18"	19"				
24 - 30			91	D.R. - 2.75				24"	15"	17"				
16 - 30	20'	Wind Bar	111	D.R. - 3.00	2nd	1.000	2.125	24"	20"	22"	484	200		
	22'		105					16"	17"	693	220			
18 - 30	28'		110	D.R. - 3.75				1.125	2.625	21"	14"	15"	1188	280
	32'		107					1.125	2.625	16"	11"	12"	1547	320
	40'	106	D.R. - 4.25	1.875	3.625	12"	N/A	N/A	1745	400				

25 PSF DESIGN LOAD														
Headplate Size	Door Opening Width Including	Std./Wind Bar	Guide Ass'y No.	Slat Length	Windlock Frequency	Slip	Wind Bar Location	Bolt Spacing Steel Jamb	Bolt Spacing Concrete Jamb 3000 PSI	Bolt Spacing Concrete Jamb 4000 PSI	Guide Load FX Lbs./Ft.	Guide Load FY Lbs./Ft.		
12 - 16	15'-5"	Std.	89	D.R. - 2.00	N/A	N/A	N/A	24"	16"	17"	0	193		
18 - 22			90	D.R. - 2.25				24"	16"	17"				
24 - 30			91	D.R. - 2.75				24"	13"	15"				
16 - 30	18'	Wind Bar	111	D.R. - 3.00	2nd	1.000	2.125	24"	20"	22"	448	225		
	22'		105					16"	13"	951	275			
18 - 30	24'		110	D.R. - 3.75				1.125	2.625	22"	14"	16"	1101	300
	28'		107					1.125	2.625	16"	11"	12"	1537	350
	35'	106	D.R. - 4.25	1.875	3.625	12"	N/A	N/A	1756	438				

30 PSF DESIGN LOAD														
Headplate Size	Door Opening Width Including	Std./Wind Bar	Guide Ass'y No.	Slat Length	Windlock Frequency	Slip	Wind Bar Location	Bolt Spacing Steel Jamb	Bolt Spacing Concrete Jamb 3000 PSI	Bolt Spacing Concrete Jamb 4000 PSI	Guide Load FX Lbs./Ft.	Guide Load FY Lbs./Ft.		
12 - 16	14'-1"	Std.	89	D.R. - 2.00	N/A	N/A	N/A	24"	14"	16"	0	212		
18 - 22			90	D.R. - 2.25				24"	14"	16"				
24 - 30			91	D.R. - 2.75				24"	12"	13"				
16 - 30	16'	Wind Bar	111	D.R. - 3.00	2nd	1.000	2.125	24"	22"	24"	319	240		
	20'		105					16"	13"	932	300			
18 - 30	23'		107	D.R. - 3.75				1.125	2.625	20"	12"	13"	1250	345
	26'		104					2.062	3.812	16"	N/A	N/A	1142	390
	31'	106	D.R. - 4.25	1.937	3.687	12"	N/A	N/A	1690	465				

35 PSF DESIGN LOAD														
Headplate Size	Door Opening Width Including	Std./Wind Bar	Guide Ass'y No.	Slat Length	Windlock Frequency	Slip	Wind Bar Location	Bolt Spacing Steel Jamb	Bolt Spacing Concrete Jamb 3000 PSI	Bolt Spacing Concrete Jamb 4000 PSI	Guide Load FX Lbs./Ft.	Guide Load FY Lbs./Ft.		
12 - 16	12'-8"	Std.	89	D.R. - 2.00	N/A	N/A	N/A	24"	14"	15"	0	222		
18 - 22			90	D.R. - 2.25				24"	14"	15"				
24 - 30			91	D.R. - 2.75				24"	12"	13"				
16 - 30	15'	Wind Bar	111	D.R. - 3.00	2nd	0.875	2.000	24"	20"	22"	358	263		
	18'		105					16"	13"	830	315			
18 - 30	21'		107	D.R. - 3.75				1.125	2.625	19"	12"	13"	1216	368
	23'		104					2.062	3.812	16"	N/A	11"	1034	403
	28'	106	D.R. - 4.25	1.937	3.687	12"	N/A	N/A	1654	490				

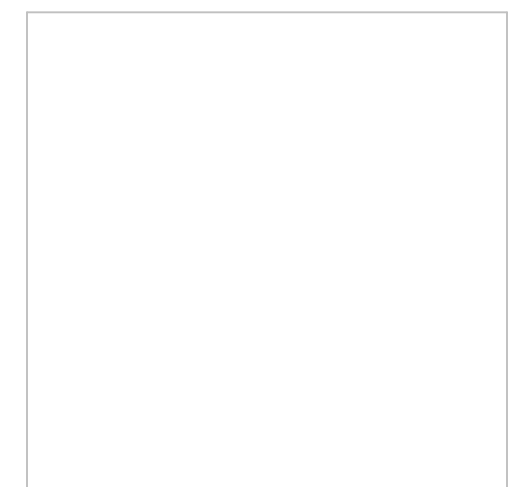
40 PSF DESIGN LOAD														
Headplate Size	Door Opening Width Including	Std./Wind Bar	Guide Ass'y No.	Slat Length	Windlock Frequency	Slip	Wind Bar Location	Bolt Spacing Steel Jamb	Bolt Spacing Concrete Jamb 3000 PSI	Bolt Spacing Concrete Jamb 4000 PSI	Guide Load FX Lbs./Ft.	Guide Load FY Lbs./Ft.		
12 - 16	11'-1"	Std.	89	D.R. - 2.00	N/A	N/A	N/A	24"	14"	15"	0	222		
18 - 22			90	D.R. - 2.25				24"	14"	15"				
24 - 30			91	D.R. - 2.75				24"	12"	13"				
16 - 30	13'	Wind Bar	111	D.R. - 3.00	2nd	0.562	1.687	24"	20"	22"	280	260		
	17'		105					16"	13"	834	340			
18 - 30	19'		107	D.R. - 3.75				1.125	2.625	20"	13"	14"	1107	380
	21'		104					2.062	3.812	17"	N/A	11"	969	420
	25'	106	D.R. - 4.25	1.937	3.687	12"	N/A	N/A	1534	500				

45 PSF DESIGN LOAD														
Headplate Size	Door Opening Width Including	Std./Wind Bar	Guide Ass'y No.	Slat Length	Windlock Frequency	Slip	Wind Bar Location	Bolt Spacing Steel Jamb	Bolt Spacing Concrete Jamb 3000 PSI	Bolt Spacing Concrete Jamb 4000 PSI	Guide Load FX Lbs./Ft.	Guide Load FY Lbs./Ft.		
12 - 16	9'-10"	Std.	89	D.R. - 2.00	N/A	N/A	N/A	24"	14"	15"	0	222		
18 - 22			90	D.R. - 2.25				24"	14"	15"				
24 - 30			91	D.R. - 2.75				24"	12"	13"				
16 - 30	12'	Wind Bar	111	D.R. - 3.00	2nd	0.437	1.562	24"	19"	21"	276	270		
	16'		105					16"	12"	799	360			
18 - 30	18'		107	D.R. - 3.75				1.125	2.625	19"	12"	14"	1114	405
	20'		104					2.062	3.812	16"	N/A	11"	992	450
	23'	106	D.R. - 4.25	1.937	3.687	12"	N/A	N/A	1473	518				

50 PSF DESIGN LOAD													
Headplate Size	Door Opening Width Including	Std./Wind Bar	Guide Ass'y No.	Slat Length	Windlock Frequency	Slip	Wind Bar Location	Bolt Spacing Steel Jamb	Bolt Spacing Concrete Jamb 3000 PSI	Bolt Spacing Concrete Jamb 4000 PSI	Guide Load FX Lbs./Ft.	Guide Load FY Lbs./Ft.	
12 - 16	8'-10"	Std.	89	D.R. - 2.00	N/A	N/A	N/A	24"	14"	15"	0	221	
18 - 22			90	D.R. - 2.25				24"	14"	15"			
24 - 30			91	D.R. - 2.75				24"	12"	13"			
18 - 30	14'	Wind Bar	105	D.R. - 3.00	2nd	0.687	1.812	22"	12"	13"	743	350	
	17'		107					D.R. - 3.75	1.125	2.625	19"	12"	13"
22'	106		D.R. - 4.25	1.937				3.687	12"	N/A	N/A	1515	550

55 PSF DESIGN LOAD													
Headplate Size	Door Opening Width Including	Std./Wind Bar	Guide Ass'y No.	Slat Length	Windlock Frequency	Slip	Wind Bar Location	Bolt Spacing Steel Jamb	Bolt Spacing Concrete Jamb 3000 PSI	Bolt Spacing Concrete Jamb 4000 PSI	Guide Load FX Lbs./Ft.	Guide Load FY Lbs./Ft.	
12 - 16	8'-0"	Std.	89	D.R. - 2.00	N/A	N/A	N/A	24"	14"	15"	0	220	
18 - 22			90	D.R. - 2.25				24"	14"	15"			
24 - 30			91	D.R. - 2.75				24"	12"	13"			
18 - 30	13'	Wind Bar	105	D.R. - 3.00	2nd	0.562	1.687	21"	12"	13"	749	358	
	16'		107					D.R. - 3.75	1.000	2.500	19"	12"	13"
20'	106		D.R. - 4.25	1.937				3.687	12"	N/A	N/A	1357	550

60 PSF DESIGN LOAD												
Headplate Size	Door Opening Width Including	Std./Wind Bar	Guide Ass'y No.	Slat Length	Windlock Frequency	Slip	Wind Bar Location	Bolt Spacing Steel Jamb	Bolt Spacing Concrete Jamb 3000 PSI	Bolt Spacing Concrete Jamb 4000 PSI	Guide Load FX Lbs./Ft.	Guide Load FY Lbs./Ft.
12 - 16	7'-4"	Std.	89	D.R. - 2.00	N/A	N/A	N/A	24"	14"	15"	0	220
18 - 22			90	D.R. - 2.25				24"	14"	15"		
24 - 30			91	D.R. - 2.75				24"	12"	13"		
18 - 30	15'	Wind Bar	107	D.R. - 3.75	2nd	0.875	2.375	18"	12"	13"	1134	450
	16'		106					D.R. - 4.25	1.875	3.625	12"	N/A



John E. Scates
2560 King Arthur Blvd, Ste 124-54
Lewisville, TX 75056
FL PE #51737
TX PE #56308-f2203

Professional Engineer's seal provided only for verification of wind load construction details.

Scale: None	 1101 East River Road Dixon, IL 61021	Title: Specifications, Wind Load Doors for Texas Approvals	
Drawn by: M. Reutzler		No. P-2262	Sheet 12
Checked by: J. Bonnell			Rev C
Date: 07/21/16 ECO: 7415.01			