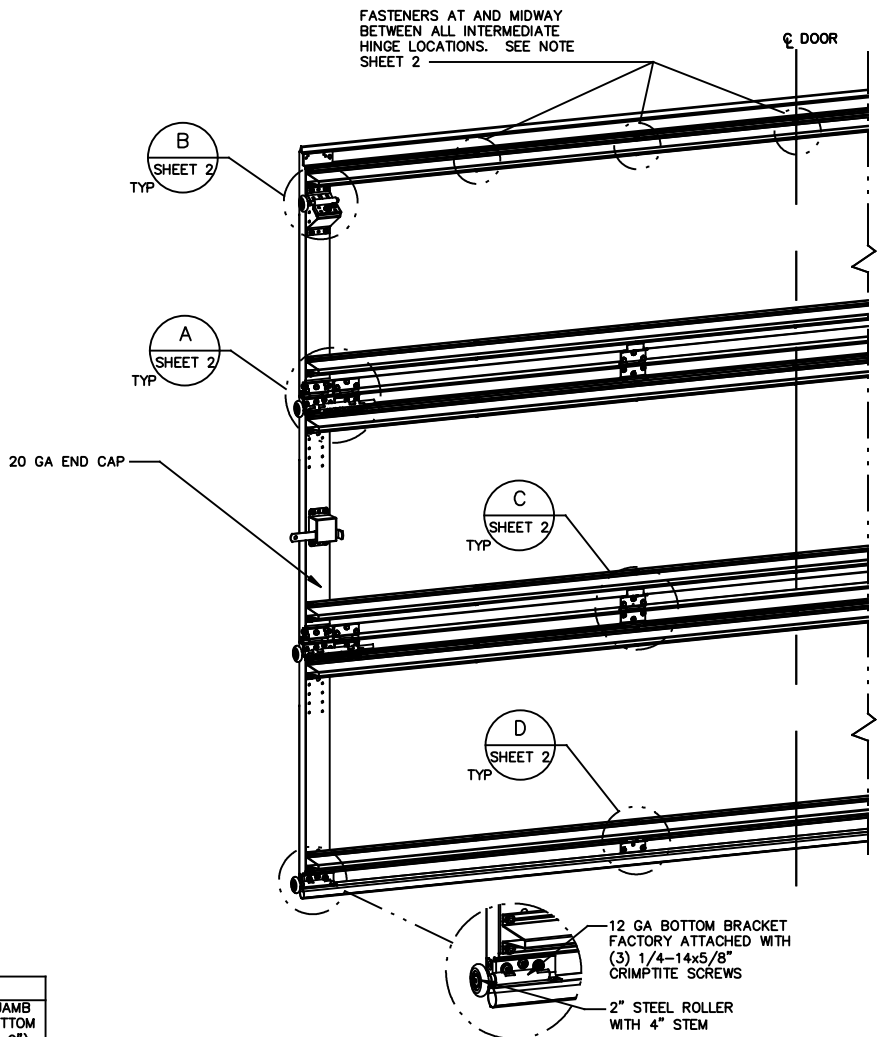
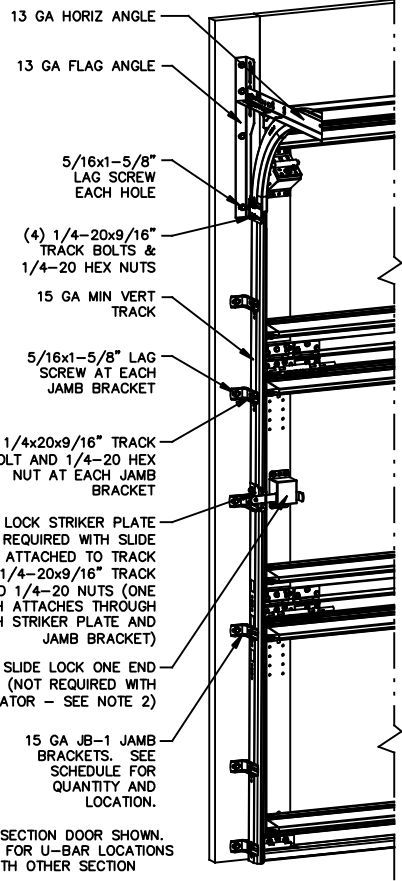


**NOTES:**

- VINYL OR WOOD DOOR STOP NAILED A MAXIMUM OF 6" O.C. MUST OVERLAP TOP AND BOTH ENDS OF PANELS MINIMUM 7/16" TO MEET NEGATIVE PRESSURES.
- SLIDE LOCK OR OPERATOR REQUIRED. SINGLE LOCK WITH STANDARD LIFT, TWO LOCKS WITH LOW HEADROOM.
- THE DESIGN OF THE SUPPORTING STRUCTURAL ELEMENTS SHALL BE THE RESPONSIBILITY OF THE PROFESSIONAL OF RECORD FOR THE BUILDING OR STRUCTURE AND IN ACCORDANCE WITH CURRENT BUILDING CODES FOR THE LOADS LISTED ON THIS DRAWING.
- SECTION STEEL TO HAVE THE FOLLOWING MINIMUM THICKNESS:  
EXTERIOR - 27 GA  
INTERIOR - 30 GA
- DOOR JAMB TO BE MINIMUM 2x6 STRUCTURAL GRADE SOUTHERN PINE LUMBER. REFER TO JAMB CONNECTION SUPPLEMENT FOR ATTACHMENT TO SUPPORTING STRUCTURE.
- FOR LOW HEAD ROOM LIFT CONDITIONS, TOP BRACKET SHALL BE A LHR TOP BRACKETS IN LIEU OF THE BRACKET SHOWN ON THIS DRAWING. SEE LHR DETAIL SHEET 2.
- SECTIONS SHALL HAVE A 20 GA BACKUP PLATE ACROSS THE TOP OF EACH SECTION FOR INTERNAL REINFORCEMENT.
- 11 GA ROLLER SLIDES WITH WELDED ENDS AND 11 GA REINFORCING BRACKETS REQUIRED FOR DOORS >8' TALL.

NOTE: (3) SECTION DOOR SHOWN. SEE SHEET 2 FOR U-BAR LOCATIONS ON DOORS WITH OTHER SECTION QUANTITIES.



**SUPERIMPOSED DESIGN PRESSURE LOADS ON SUPPORTING STRUCTURE**

DOOR WIDTH	DOOR HEIGHT	UNIFORM LOAD EACH JAMB (PLF)
10'-0"	ALL	+205.0/-231.5

**JAMB BRACKET SCHEDULE**

DOOR HEIGHT	NO. OF SECTIONS	NO. OF JAMB BRACKETS (EACH JAMB)	LOCATION OF CENTERLINE OF JAMB BRACKETS MEASURED FROM BOTTOM OF TRACK (ALL DIMENSIONS ± 2")
7'-0"	3	6	2", 10", 26", 42", 53", 63"
8'-0"	4	8	2", 10", 26", 39", 48", 57", 66", 75"
> 8'-0"			SEE NOTE BELOW

NOTE: ALL DOORS GREATER THAN 8' IN HEIGHT REQUIRE USE OF CONTINUOUS WALL ANGLE. SEE SUPPLEMENT TRACK CHART FOR DETAILS.

**REVISIONS**

- POO CREATED NEW DRAWING FOR WINDLOAD OPTIONS 8-24-16 GAC
- P01 ER 31281 REV NOMENCLATURE TO 1144 GRADE STEEL ROLLERS 2-3-17 GAC

JOHN E. SCATES, PE  
3121 FAIRGATE DR.  
CARROLLTON, TX 75007  
FL PE 51737 TX PE 56308/F2203  
PROFESSIONAL ENGINEER'S SEAL PROVIDED ONLY FOR VERIFICATION OF WINDLOAD CONSTRUCTION DETAILS.



Lewisville, TX

STATIC PRESSURE RATINGS		APPROVED SIZES		SCALE: N.T.S.		SIZE: A	
DESIGN (PSF):	+41.00/-46.30	MAX WIDTH:	10'-0"	DATE	8-24-16	NAME	GAC
TEST (PSF):	+61.50/-69.45	MAX HEIGHT:	14'-0"	DRAWN	8-24-16	CHECKED	DK
IMPACT/CYCLIC RATED (YES/NO): NO		MAX SECTION HEIGHT:	28"				

MODELS 300-309/5800		SHEET 1 OF 2	
WINDLOAD SPECIFICATION		DRAWING PART NO.	REV.
		411453	P01

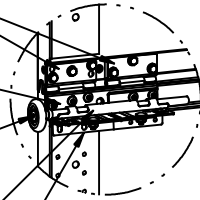
(2) 15 GA HINGE LEAFS ATTACHED WITH (3) 1/4-14x5/8" CRIMPITITE SCREWS EACH

14 GA HINGE BASE FACTORY ATTACHED TO DOOR WITH (5) 1/4-14x5/8" CRIMPITITE SCREWS

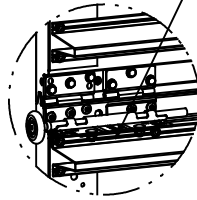
2" 1144 GRADE OR EQUIVALENT STEEL ROLLER WITH 9" STEM

13 GA ROLLER CARRIERS FACTORY ATTACHED TO HINGE BASE AND REINFORCING BRACKET. (EXCEPTION: NOTE #8)

13 GA REINFORCING BRACKET ATTACHED BENEATH HINGE BASE. (EXCEPTION: NOTE #8)



BEFORE U-BAR INSTALLATION



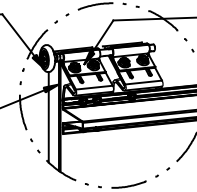
AFTER U-BAR INSTALLATION

DETAIL A

POSITION U-BAR OVER REINFORCING BRACKET AND ATTACH WITH (3) 1/4-20x7/8" SELF DRILLING SCREWS AS SHOWN (2 OF WHICH ATTACH THROUGH REINFORCING BRACKET)

2" 1144 GRADE STEEL ROLLER WITH 9" STEM  
14GA LHR TOP BRACKET ATTACHED TO DOOR WITH (3) 1/4-20 X 11/16" SELF DRILLING AND (2) #12 X 1/2" PHILLIPS SCREWS

LOW HEADROOM TRACK



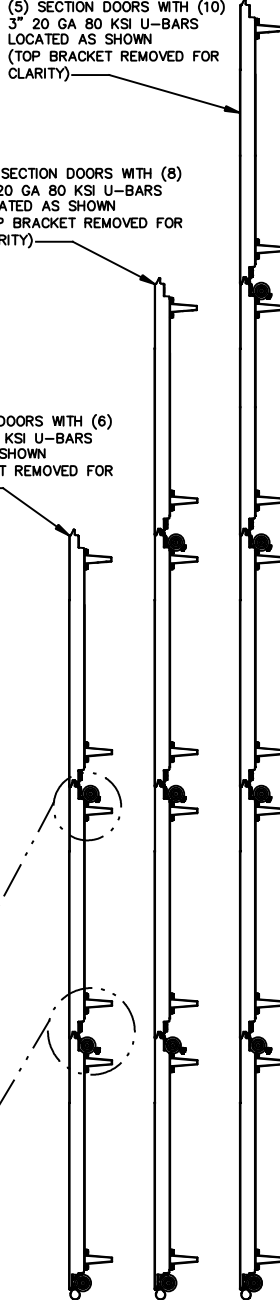
13 GA ROLLER SLIDE ATTACHED TO BRACKET WITH (2) 1/4-20 CARRIAGE BOLTS

U-BAR LOCATIONS

(5) SECTION DOORS WITH (10) 3" 20 GA 80 KSI U-BARS LOCATED AS SHOWN (TOP BRACKET REMOVED FOR CLARITY)

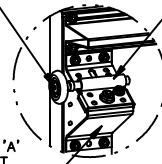
(4) SECTION DOORS WITH (8) 3" 20 GA 80 KSI U-BARS LOCATED AS SHOWN (TOP BRACKET REMOVED FOR CLARITY)

(3) SECTION DOORS WITH (6) 3" 20 GA 80 KSI U-BARS LOCATED AS SHOWN (TOP BRACKET REMOVED FOR CLARITY)



DETAIL B

2" STEEL ROLLER WITH 4" STEM

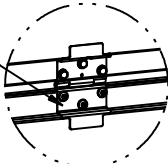


STANDARD LIFT TRACK

13 GA COMMERCIAL "A" FRAME TOP BRACKET ATTACHED WITH (4) 1/4-20x7/8" SELF DRILLING SCREWS

13 GA ROLLER SLIDE ATTACHED TO BRACKET WITH 5/16-18 BOLT & NUT IN CENTER SLOT AND 1/4-20x9/16" TRACK BOLT & 1/4-20 HEX NUT THROUGH ANY TWO ALIGNING HOLES

15 GA HINGE ATTACHED WITH (6) 1/4-14x5/8" CRIMPITITE SCREWS (3 OF WHICH ARE FACTORY ATTACHED)



BEFORE U-BAR INSTALLATION



AFTER U-BAR INSTALLATION

DETAIL C

POSITION U-BAR ADJACENT TO HINGE LEAF AND ATTACH WITH (2) 1/4-14x5/8" CRIMPITITE SCREWS AS SHOWN

POSITION U-BAR OVER HINGE LEAF AND ATTACH WITH (1) 1/4-14x5/8" CRIMPITITE SCREW AND (1) 1/4-20x7/8" SELF DRILLING SCREW AS SHOWN (SELF DRILLING SCREW ATTACHES THROUGH HINGE LEAF)

15 GA HINGE BRACKET ATTACHED WITH (2) 1/4-20x7/8" SELF DRILLING SCREWS



BEFORE U-BAR INSTALLATION



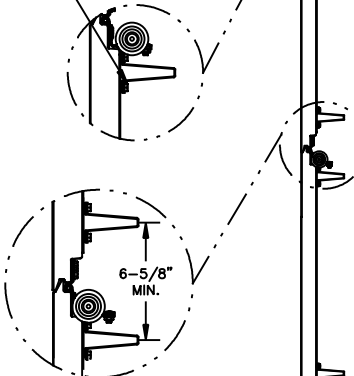
AFTER U-BAR INSTALLATION

DETAIL D

POSITION U-BAR OVER HINGE BRACKET AND ATTACH WITH (1) 1/4-14x5/8" CRIMPITITE SCREW AND (1) 1/4-20x7/8" SELF DRILLING SCREW AS SHOWN (SELF DRILLING SCREW ATTACHES THROUGH HINGE BRACKET)

UNLESS NOTED OTHERWISE, ALL U-BARS SHALL BE ATTACHED WITH A MINIMUM OF (2) FASTENERS AT EACH END, AT ALL INTERMEDIATE HINGE LOCATIONS (OR IN LINE WITH INTERMEDIATE HINGE LOCATIONS IF U-BAR IS NOT LOCATED AT A HINGE), AND MIDWAY BETWEEN INTERMEDIATE HINGE LOCATIONS AND END CAPS (MINIMUM OF (14) FASTENERS EACH U-BAR). ALL FASTENERS USED TO ATTACH U-BARS SHALL BE 1/4-14x5/8" CRIMPITITE SCREWS EXCEPT 1/4-20x7/8" SELF DRILLING SCREWS SHALL BE USED AT END CAPS AND WHERE FASTENING THROUGH HINGE LEAFS OR BRACKETS.

NOTE: U-BARS SHOULD BE INSTALLED LEVEL ACROSS DOOR AND MAINTAIN A MINIMUM CENTERLINE SPACING OF 6-5/8" BETWEEN U-BARS ON ADJACENT SECTIONS



6-5/8" MIN.

The Genuine. The Original.



Lewisville, TX

	STATIC PRESSURE RATINGS		APPROVED SIZES		SCALE: N.T.S.		SIZE: A	
	DESIGN (PSF):	+41.00/-46.30	MAX WIDTH:	10'-0"	DATE	NAME		
	TEST (PSF):	+61.50/-69.45	MAX HEIGHT:	14'-0"	DRAWN	8-24-16 GAC		
IMPACT/CYCLIC RATED (YES/NO): NO		MAX SECTION HEIGHT: 28"	CHECKED	8-24-16		DK		
MODELS 300-309/5800						SHEET 2 OF 2		
WINDLOAD SPECIFICATION						DRAWING PART NO.		REV.
						411453		P01

JOHN E. SCATES, PE  
3121 FAIRGATE DR.  
CARROLLTON, TX 75007  
FL PE 51737 TX PE 56308/F2203

PROFESSIONAL ENGINEER'S SEAL PROVIDED ONLY FOR VERIFICATION OF WINDLOAD CONSTRUCTION DETAILS.

REVISIONS