

**NOTES:**

1. VINYL OR WOOD DOOR STOP NAILED A MAXIMUM OF 6" O.C. MUST OVERLAP TOP AND BOTH ENDS OF PANELS MINIMUM 7/16" TO MEET NEGATIVE PRESSURES.

2. SLIDE LOCK OR OPERATOR REQUIRED. LOW HEADROOM REQUIRES A LOCK ON THE LEFT AND RIGHT SIDE OF THE DOOR.

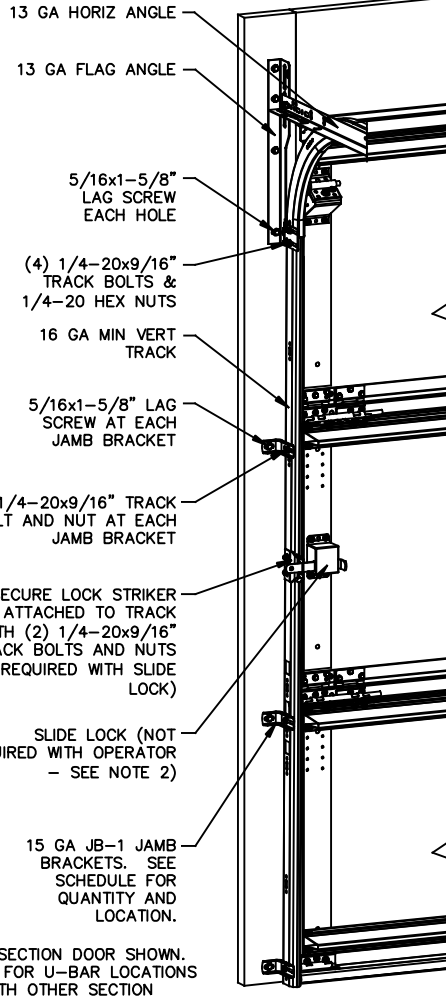
3. THE DESIGN OF THE SUPPORTING STRUCTURAL ELEMENTS SHALL BE THE RESPONSIBILITY OF THE PROFESSIONAL OF RECORD FOR THE BUILDING OR STRUCTURE AND IN ACCORDANCE WITH CURRENT BUILDING CODES FOR THE LOADS LISTED ON THIS DRAWING.

4. SECTION STEEL TO HAVE THE FOLLOWING MINIMUM THICKNESS:  
EXTERIOR - 27 GA  
INTERIOR - 30 GA

5. DOOR JAMB TO BE MINIMUM 2x6 STRUCTURAL GRADE LUMBER AND BE SPRUCE, PINE, OR FIR. REFER TO JAMB CONNECTION SUPPLEMENT FOR ATTACHMENT TO SUPPORTING STRUCTURE.

6. FOR LOW HEAD ROOM LIFT CONDITIONS, TOP BRACKET SHALL BE A LHR TOP BRACKET IN LIEU OF THE BRACKET SHOWN ON THIS DRAWING. SEE LHR, DETAIL A, SHEET 2.

7. 11 GA ROLLER SLIDES WITH WELDED ENDS AND 11 GA REINFORCING BRACKETS REQUIRED FOR DOORS >8' TALL.



NOTE: (3) SECTION DOOR SHOWN. SEE SHEET 2 FOR U-BAR LOCATIONS ON DOORS WITH OTHER SECTION QUANTITIES.

**JAMB BRACKET SCHEDULE**

DOOR HEIGHT	NO. OF SECTIONS	NO. OF JAMB BRACKETS (EACH JAMB)	LOCATION OF CENTERLINE OF JAMB BRACKETS MEASURED FROM BOTTOM OF TRACK (ALL DIMENSIONS ± 2")
7'-0"	3	3	2", 26", 53"
8'-0"	4	4	2", 26", 48", 75"
> 8'-0"			SEE NOTE BELOW

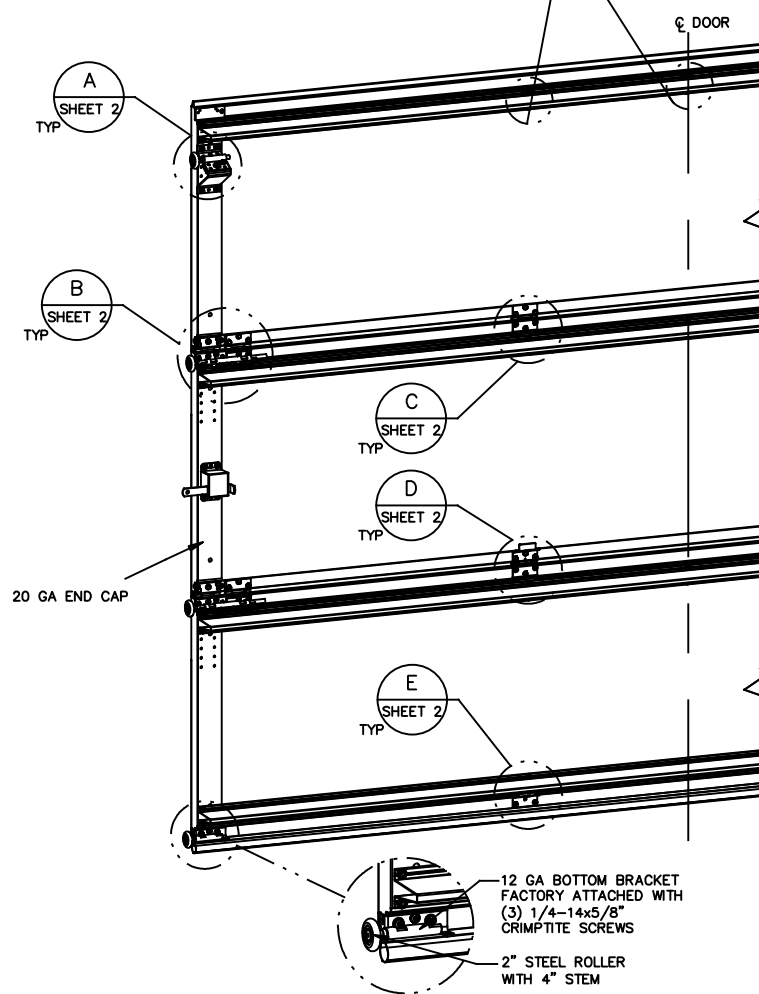
NOTE: ALL DOORS GREATER THAN 8' IN HEIGHT REQUIRE USE OF CONTINUOUS WALL ANGLE. SEE SUPPLEMENT TRACK CHART FOR DETAILS.

**SUPERIMPOSED DESIGN PRESSURE LOADS ON SUPPORTING STRUCTURE**

DOOR WIDTH	DOOR HEIGHT	UNIFORM LOAD EACH JAMB (PLF)
10'-0"	ALL	+134.5/-154.0

PROFESSIONAL ENGINEER'S SEAL PROVIDED ONLY FOR VERIFICATION OF WINDLOAD CONSTRUCTION DETAILS.

FASTENERS AT AND MIDWAY BETWEEN ALL INTERMEDIATE HINGE LOCATIONS. SEE NOTE SHEET 2



**REVISIONS**

POO	CREATED NEW DRAWING FOR WINDLOAD OPTIONS 8-23-16 GAC
-----	--

This door has been tested per ANSI/DASMA 108

The Genuine. The Original.



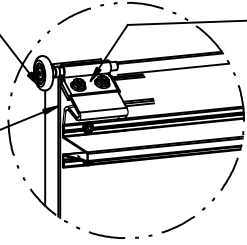
Lewisville, TX

STATIC PRESSURE RATINGS		APPROVED SIZES		SCALE: N.T.S.		SIZE: A	
DESIGN (PSF):	+26.90/-30.80	MAX WIDTH:	10'-0"	DATE	8-23-16	NAME	GAC
IMPACT/CYCLIC RATED (YES/NO): NO		MAX HEIGHT:	14'-0"	DRAWN	8-23-16	DK	
		MAX SECTION HEIGHT: 28"	CHECKED	8-23-16			
MODELS 300-309/5800				SHEET 1 OF 2			
WINDLOAD SPECIFICATION				DRAWING PART NO.		REV.	
				411431		POO	

JOHN E. SCATES, PE  
3121 FAIRGATE DR.  
CARROLLTON, TX 75007  
FL PE 51737 TX PE 56308/F-2203

LOW HEADROOM TRACK

2" STEEL ROLLER WITH 4" STEM  
14GA LHR TOP BRACKET ATTACHED TO DOOR WITH (3) 1/4-20 X 11/16" SELF DRILLING AND (2) #12 X 1/2" PHILLIPS SCREWS



13 GA ROLLER SLIDE ATTACHED TO BRACKET WITH 5/16-18 BOLT & NUT IN CENTER SLOT AND 1/4-20x9/16" TRACK BOLT & NUT THROUGH ANY TWO ALIGNING HOLES

DETAIL A

(2) 15 GA HINGE LEAFS ATTACHED WITH (3) 1/4-14x5/8" CRIMPITTE SCREWS EACH

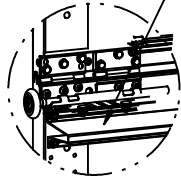
13 GA REINFORCING BRACKET ATTACHED BENEATH HINGE BASE. (EXCEPTION: NOTE #7)

2" STEEL ROLLER WITH 9" STEM

13 GA ROLLER CARRIERS FACTORY ATTACHED TO HINGE BASE AND REINFORCING BRACKET. (EXCEPTION: NOTE #7)

BEFORE U-BAR INSTALLATION

POSITION U-BAR AND ATTACH WITH (3) 1/4-20x7/8" SELF DRILLING SCREWS AS SHOWN



AFTER U-BAR INSTALLATION

DETAIL B

15 GA HINGE BRACKET ATTACHED WITH (2) 1/4-20x7/8" SELF DRILLING SCREWS



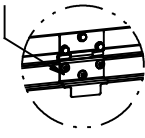
BEFORE U-BAR INSTALLATION



AFTER U-BAR INSTALLATION

DETAIL E

15 GA HINGE ATTACHED WITH (6) 1/4-14x5/8" CRIMPITTE SCREWS (3 OF WHICH ARE FACTORY ATTACHED)



BEFORE U-BAR INSTALLATION

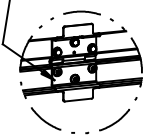


AFTER U-BAR INSTALLATION

DETAIL C

POSITION U-BAR OVER HINGE LEAF AND ATTACH WITH (1) 1/4-14x5/8" CRIMPITTE SCREW AND (1) 1/4-20x7/8" SELF DRILLING SCREW AS SHOWN (SELF DRILLING SCREW ATTACHES THROUGH HINGE LEAF)

15 GA HINGE ATTACHED WITH (6) 1/4-14x5/8" CRIMPITTE SCREWS (3 OF WHICH ARE FACTORY ATTACHED)



BEFORE U-BAR INSTALLATION



AFTER U-BAR INSTALLATION

DETAIL D

POSITION U-BAR OVER HINGE LEAF AND ATTACH WITH (1) 1/4-14x5/8" CRIMPITTE SCREW AND (1) 1/4-20x7/8" SELF DRILLING SCREW AS SHOWN (SELF DRILLING SCREW ATTACHES THROUGH HINGE LEAF)

STANDARD LIFT TRACK

2" STEEL ROLLER WITH 4" STEM  
13 GA COMMERCIAL "A" FRAME TOP BRACKET ATTACHED WITH (4) 1/4-20x7/8" SELF DRILLING SCREWS



13 GA ROLLER SLIDE ATTACHED TO BRACKET WITH 5/16-18 BOLT & NUT IN CENTER SLOT AND 1/4-20x9/16" TRACK BOLT & 1/4-20 HEX NUT THROUGH ANY TWO ALIGNING HOLES

U-BAR LOCATIONS

(7) SECTION DOORS WITH (8) 3" 20 GA 80 KSI U-BARS LOCATED AS SHOWN (TOP BRACKET REMOVED FOR CLARITY)

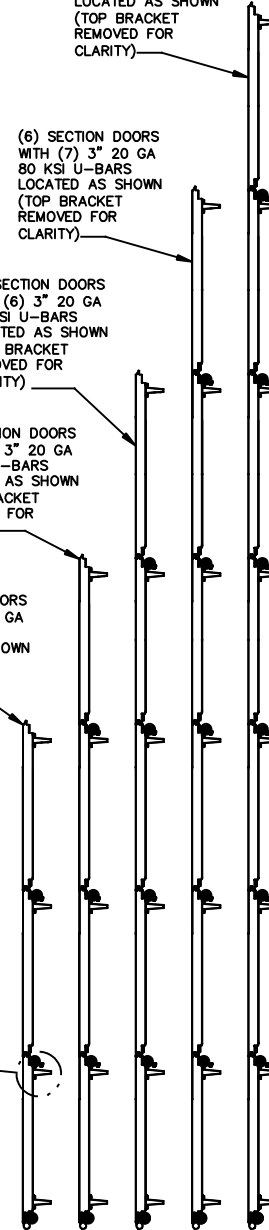
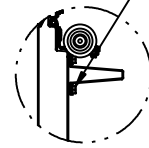
(6) SECTION DOORS WITH (7) 3" 20 GA 80 KSI U-BARS LOCATED AS SHOWN (TOP BRACKET REMOVED FOR CLARITY)

(5) SECTION DOORS WITH (6) 3" 20 GA 80 KSI U-BARS LOCATED AS SHOWN (TOP BRACKET REMOVED FOR CLARITY)

(4) SECTION DOORS WITH (5) 3" 20 GA 80 KSI U-BARS LOCATED AS SHOWN (TOP BRACKET REMOVED FOR CLARITY)

(3) SECTION DOORS WITH (4) 3" 20 GA 80 KSI U-BARS LOCATED AS SHOWN (TOP BRACKET REMOVED FOR CLARITY)

UNLESS NOTED OTHERWISE, ALL U-BARS SHALL BE ATTACHED WITH A MINIMUM OF (2) FASTENERS AT EACH END, AT ALL INTERMEDIATE HINGE LOCATIONS (OR IN LINE WITH INTERMEDIATE HINGE LOCATIONS IF U-BAR IS NOT LOCATED AT A HINGE), AND MIDWAY BETWEEN INTERMEDIATE HINGE LOCATIONS (MINIMUM OF (10) FASTENERS EACH U-BAR). ALL FASTENERS USED TO ATTACH U-BARS SHALL BE 1/4-14x5/8" CRIMPITTE SCREWS EXCEPT 1/4-20x7/8" SELF DRILLING SCREWS SHALL BE USED AT END CAPS AND WHERE FASTENING THROUGH HINGE LEAFS OR BRACKETS.



REVISIONS

JOHN E. SCATES, PE  
3121 FAIRGATE DR.  
CARROLLTON, TX 75007  
FL PE 51737 TX PE 56308/F-2203

PROFESSIONAL ENGINEER'S SEAL PROVIDED ONLY FOR VERIFICATION OF WINDLOAD CONSTRUCTION DETAILS.



Lewisville, TX

STATIC PRESSURE RATINGS	APPROVED SIZES	SCALE: N.T.S.	SIZE: A
DESIGN (PSF): +26.90/-30.80	MAX WIDTH: 10'-0"	DATE	NAME
IMPACT/CYCLIC RATED (YES/NO): NO	MAX HEIGHT: 14'-0"	DRAWN	GAC
	MAX SECTION HEIGHT: 28"	CHECKED	DK
MODELS 300-309/5800		SHEET 2 OF 2	
WINDLOAD SPECIFICATION		DRAWING PART NO.	REV.
		411431	P00