

MODELS	STANDARD	INSULATED
CLOPAY	G4S, GS4, G4L, GL4, GD4S, GD4L, GR4S, GR4L	G4SV, GS4V, G4LV, GL4V, GD4SV, GD4LV, GR4SV, GR4LV
IDEAL	E4S, E4L, ED4S, ED4L, MR4S, MR4L	E4SV, E4LV, ED4SV, ED4LV, MR4SV, MR4LV
HOLMES	SS4, SL4, AR4S, AR4L	SS4V, SL4V, AR4SV, AR4LV

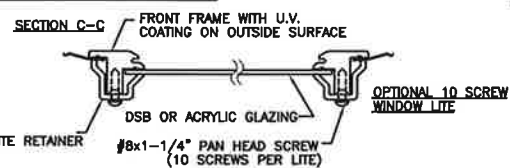
DOOR WIDTH	# OF HINGES	# OF STD. INTERM. STILES	# OF COMM. STILES
9'-2" TO 10'-0"	1	1	0
10'-2" TO 11'-4"	N/A	N/A	N/A
11'-6" TO 13'-10"	2	2	1
14'-0" TO 16'-0"	3	3	2

DOOR WIDTH	# OF HINGES	# OF STD. INTERM. STILES
9'-2" TO 10'-0"	1	1
10'-2" TO 11'-4"	N/A	N/A
11'-6" TO 13'-10"	2	2
14'-0" TO 16'-0"	3	3

THIS PRODUCT COMPLIES WITH THE 2018 IBC/IRC.

THE OPTIONAL GLAZING SHOWN ON THIS DRAWING MEETS THE WIND LOAD REQUIREMENTS OF THE FLORIDA BUILDING CODE OR INTERNATIONAL BUILDING CODE BUT DOES NOT MEET THE IMPACT RESISTANT REQUIREMENT FOR WINDBORNE DEBRIS REGIONS (REF. CHAPTER 16 FBC/IBC).

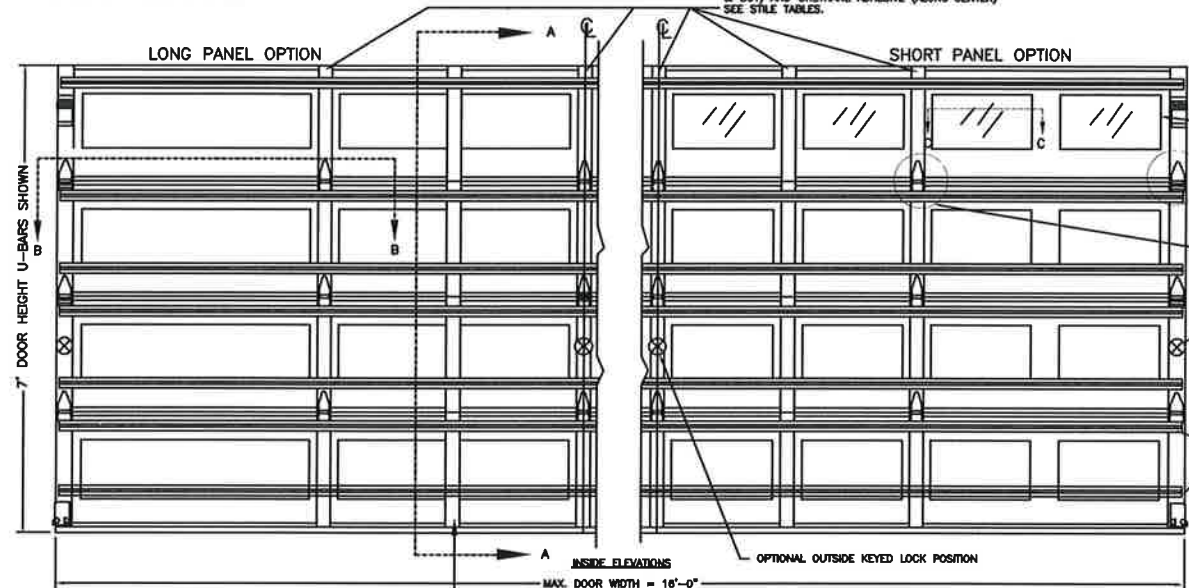
DOOR AVAILABLE IN SHORT OR LONG EMBOSS. DOOR MAY CONSIST OF MIXTURE OF LONG AND SHORT PANEL SECTIONS.



EQUIVALENT SECTION CONSTRUCTION: FOR ANY OF THE MODELS LISTED ON THIS DRAWING, THE FOLLOWING W-LEVEL DOORS USE EQUIVALENT SECTIONS (UP TO THE MAXIMUM WIDTH ALLOWED ON THIS DRAWING).

W3, W4, W5.

ANY OF THESE W-LEVELS MAY BE SHOWN ON THE OPTIONAL SHIPPING LABEL ON THE END STILE.

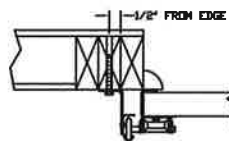


OPTIONAL WINDOW LITES DSB GLASS AVAILABLE. (SEE SECTION C-C). MAX GLAZING CUTOFF SIZE NOT TO EXCEED 18'-5/8" X 15'-1/16".

SECTIONS WITH ONE U-BAR: POSITION AT TOP OF SECTION AS SHOWN OVER HINGES.  
SECTIONS WITH TWO U-BARS: POSITION ONE AT TOP AND ONE AT BOTTOM OF SECTION ABOVE HINGE OR ABOVE BOTTOM BRACKET AS SHOWN.  
SECTIONS WITH THREE U-BARS: POSITION FIRST TWO AS ABOVE, POSITION THIRD U-BAR IN MIDDLE OF SECTION. (SEE HEIGHT CHART FOR U-BAR ARRANGEMENT)

FOR MODELS G4L, GD4L, G4LV, GD4LV, F4L, FD4L, F4LV, FD4LV, MR4L, MR4LV, GL4, GR4L, GL4V, GR4LV, SL4, AR4L, SL4V, AR4LV ONLY (LONG EMBOSS DOORS):  
ADDITIONAL 18 GA. COMMERCIAL INTERM. STILES REQUIRED FROM 11'-6" WIDE TO 16'-0" WIDE  
SEE 'STILE TABLE FOR LONG EMBOSS DOORS'.  
THESE COMMERCIAL CENTER STILES ARE ATTACHED MIDPOINT BETWEEN THE EXISTING RESIDENTIAL CENTER STILES. COMMERCIAL CENTER STILES ARE ATTACHED WITH TOP-L-LOC (TOP & BOTTOM) OR (4) 3/16" POP RIVETS OR (4) #8 SHEET METAL SCREWS.

IN THE CASE OF GYPSUM WALLBOARD LOCATED AT OR NEAR THE DOOR OPENING LOCATION THERE ARE TWO ACCEPTABLE ALTERNATIVES:  
1) THE WALLBOARD CAN BE CUT AWAY FROM THE DOOR OPENING AND 2X6 SOUTHERN YELLOW PINE WOOD JAMBS MOUNTED DIRECTLY TO THE SUPPORTING STRUCTURE TO CREATE THE MOUNTING SURFACE. ALTERNATIVELY, THE BRACKETS MAY BE ATTACHED DIRECTLY TO THE SUPPORTING STRUCTURE. SEE DETAIL BELOW. THE CENTER OF SCREW HOLE MUST BE AT LEAST 1/2" FROM BOTH EDGES FOR A 5/16" LAG SCREW.  
2) IF THE WALLBOARD IS NOT CUT AWAY TO EXPOSE THE UNDERLYING STRUCTURE (WOOD FRAMING MEMBERS), A 2X6 SOUTHERN YELLOW PINE WOOD BUCK OVER SHALL BE INSTALLED THE WALLBOARD FRAMING THE OPENING USING THE JAMB ATTACHMENT FASTENERS LISTED BELOW. HOWEVER, THE JAMB ATTACHMENT FASTENERS MUST BE OF A SUFFICIENT INCREASED LENGTH TO ACCOUNT FOR THE THICKNESS OF THE WALLBOARD TO ENSURE PROPER FASTENER EMBEDMENT INTO THE STRUCTURAL FRAMING MEMBERS OF THE SUPPORTING STRUCTURE.

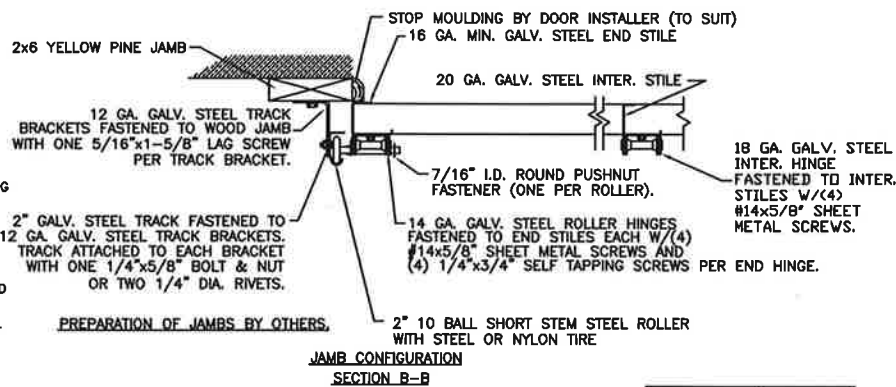


NOTE: THE DESIGN OF THE SUPPORTING STRUCTURAL ELEMENTS SHALL BE THE RESPONSIBILITY OF THE PROFESSIONAL OF RECORD FOR THE BUILDING OR STRUCTURE AND IN ACCORDANCE WITH CURRENT BUILDING CODES FOR THE LOADS LISTED ON THIS DRAWING.

VERTICAL JAMB ATTACHMENT (WOOD FRAME BUILDINGS):  
3/8"x3" LAG SCREWS ON 19" CENTERS. 1-1/8" O.D. WASHER REQUIRED. LAG SCREWS MAY BE COUNTERSUNK (BUT NOT REQUIRED) TO PROVIDE A FLUSH MOUNTING SURFACE. HORIZONTAL JAMBS DO NOT TRANSFER LOAD.

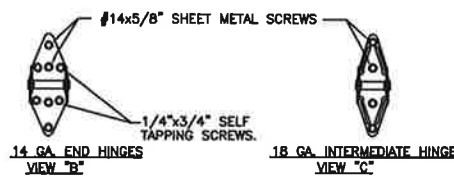
VERTICAL JAMB ATTACHMENT (C-90 BLOCK OR 2,000 PSI MIN. CONCRETE COLUMN):  
3/8"x3" SLEEVE ANCHOR BOLTS ON 24" CENTERS (2,000 PSI MIN. CONCRETE). WASHERS INCLUDED WITH SLEEVE ANCHORS.  
OR  
1/4"x3" TAPCON SCREWS ON 24" CENTERS (2,000 PSI MIN. CONCRETE) OR 21" CENTERS (C-90 BLOCK). 1" O.D. WASHERS REQUIRED WITH TAPCONS.  
ANCHORS MAY BE COUNTERSUNK (BUT NOT REQUIRED) TO PROVIDE A FLUSH MOUNTING SURFACE. HORIZONTAL JAMBS DO NOT TRANSFER LOAD.

OTHER JAMB CONFIGURATIONS: REFER TO DASMA TDS-161. A LICENSED DESIGN PROFESSIONAL MAY ALSO BE EMPLOYED TO APPROVE ALTERNATE FASTENERS AND/OR JAMB CONFIGURATIONS.

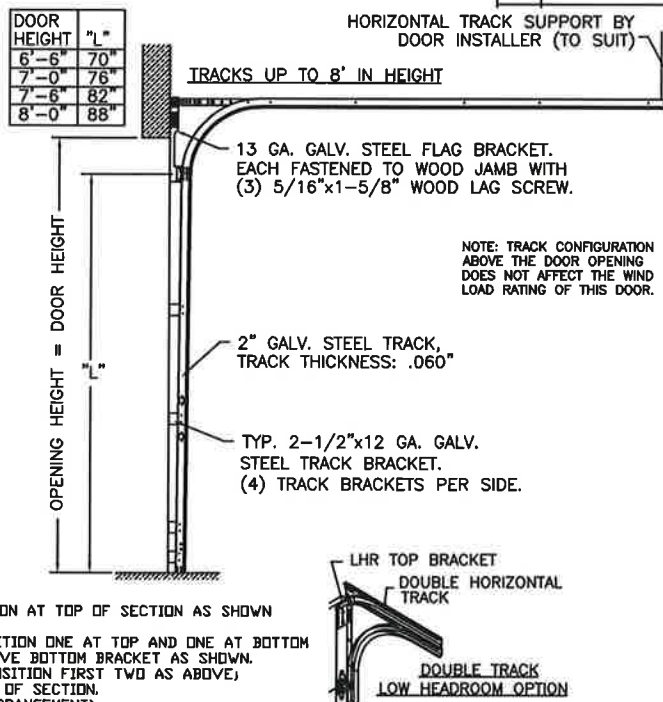


DOOR HEIGHT	# OF SECTIONS
6'-0"	3
6'-3" TO 8'-0"	4
8'-3" TO 10'-0"	5
10'-3" TO 12'-0"	6
12'-3" TO 14'-0"	7
14'-3" TO 16'-0"	8
MAX SECTION HEIGHT:	24"

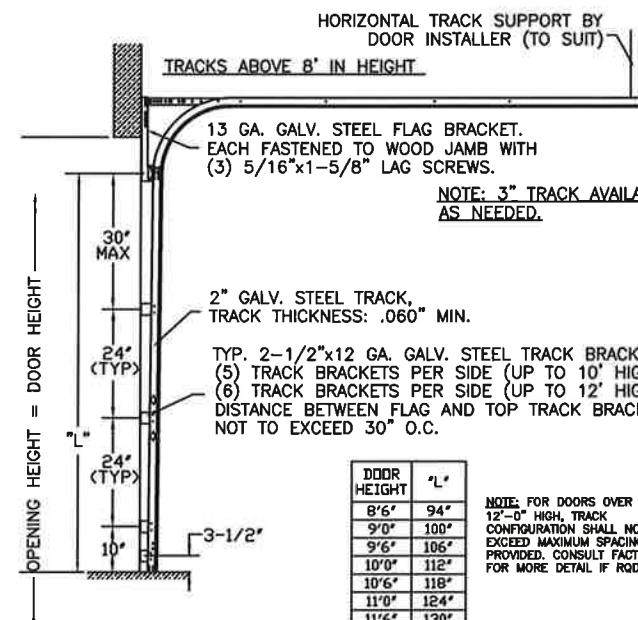
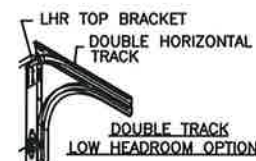
ORIGINAL DRAWINGS ARE SIGNED IN BLUE INK WITH A RAISED SEAL (EMBOSS).  
DESIGN ENGINEER: MARK WESTERFIELD, P.E.  
FLORIDA P.E. #48495,  
NC P.E. #23832,  
TEXAS P.E. #91513



DOOR HEIGHT	"L"
6'-6"	70"
7'-0"	76"
7'-6"	82"
8'-0"	88"



NOTE: TRACK CONFIGURATION ABOVE THE DOOR OPENING DOES NOT AFFECT THE WIND LOAD RATING OF THIS DOOR.



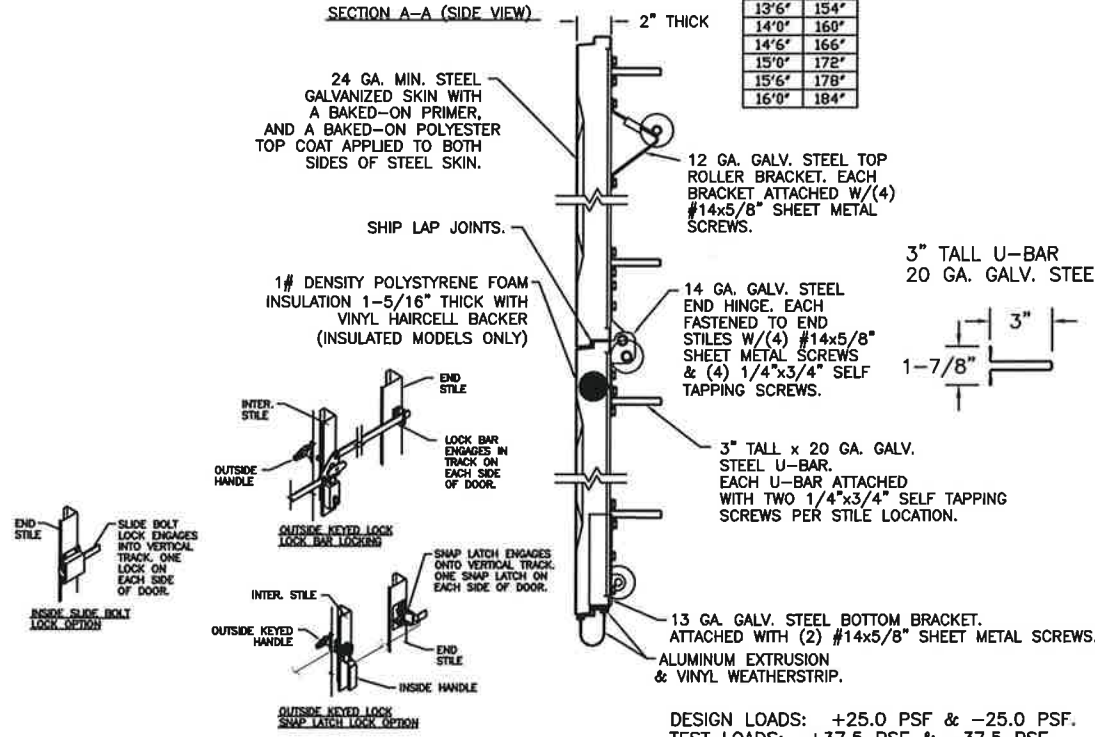
NOTE: 3" TRACK AVAILABLE AS NEEDED.

DOOR HEIGHT	"L"
8'-6"	94"
9'-0"	100"
9'-6"	106"
10'-0"	112"
10'-6"	118"
11'-0"	124"
11'-6"	130"
12'-0"	136"
12'-6"	142"
13'-0"	148"
13'-6"	154"
14'-0"	160"
14'-6"	166"
15'-0"	172"
15'-6"	178"
16'-0"	184"

NOTE: FOR DOORS OVER 12'-0" HIGH, TRACK CONFIGURATION SHALL NOT EXCEED MAXIMUM SPACING PROVIDED. CONSULT FACTORY FOR MORE DETAIL IF REQ.

GALLERY 24GA W4-16

DOOR HEIGHT	NO. OF STRUTS PER SECTION	SECTION NUMBER							
		1	2	3	4	5	6	7	8
6'-0"	3								
6'-3"	4								
6'-6"	5								
6'-9"	6								
7'-0"	7								
7'-3"	8								
7'-6"	9								
7'-9"	10								
8'-0"	11								
8'-3"	12								
8'-6"	13								
8'-9"	14								
9'-0"	15								
9'-3"	16								
9'-6"	17								
9'-9"	18								
10'-0"	19								
10'-3"	20								
10'-6"	21								
10'-9"	22								
11'-0"	23								
11'-3"	24								
11'-6"	25								
11'-9"	26								
12'-0"	27								
12'-3"	28								
12'-6"	29								
12'-9"	30								
13'-0"	31								
13'-3"	32								
13'-6"	33								
13'-9"	34								
14'-0"	35								
14'-3"	36								
14'-6"	37								
14'-9"	38								
15'-0"	39								
15'-3"	40								
15'-6"	41								
15'-9"	42								
16'-0"	43								



DESIGN LOADS: +25.0 PSF & -25.0 PSF.  
TEST LOADS: +37.5 PSF & -37.5 PSF.

	CLOPAY CORPORATION 8585 DUKE BLVD. MASON, OH 45040 (513) 770-4800 Clopay Corporation All Rights Reserved. The arrangements depicted herein are the sole property of the Clopay Corporation and may not be reproduced in any form without it's written permission.	MANUFACTURING PRODUCT CODE SHORT PANEL: PAN-2F443 LONG PANEL: PAN-2F441	WINDLOAD RATING <b>W4</b>	MAX. DOOR SIZE: 16'0"W x 16'0"H
	DATE: 6/01/05 DRAWN BY: RJK	DESCRIPTION: G4S, G4SV, G4L, G4LV; 16'W +25/-25 PSF	DRAWING NUMBER: <b>B</b> 103454	