

THE METHOD OF TESTING WAS IN SUBSTANTIAL CONFORMANCE WITH THE PROCEDURES DESCRIBED IN DASMA 108. THE PRESSURES SHOWN ON THE DRAWINGS WERE CALCULATED USING ASCE 7-98/02/05 WITH THE FOLLOWING PARAMETERS (5 FEET OF DOOR WIDTH IN END ZONE, ROOF AT ANY SLOPE, AND I=1.0):

WIND SPEED (MPH)	110	100	95	91	87
EXPOSURE LEVEL	B	C	C	D	D
MEAN ROOF HEIGHT	30'	15'	25'	15'	25'

REV	DESCRIPTION OF REVISIONS	DATE	BY

MAX SIZE 16' x 14'

DESIGN LOADS +18.3 PSF -20.8 PSF

TEST LOADS (1.5 x DESIGN LOADS) +27.5 PSF -31.2 PSF

Thomas L. Shelmerdine, PE (TX PE #85829) Structural Solutions, PA (TX Firm #004063)

STATE OF TEXAS
THOMAS L. SHELMERDINE
85829
LICENSED PROFESSIONAL ENGINEER
TX

5921-G W. Friendly Ave., Greensboro, NC 27410

Amarr
ENTREMATIc

MODEL P500 AMARR OLYMPUS 500
MODEL D500 AMARR DESIGNERS CHOICE DC-500

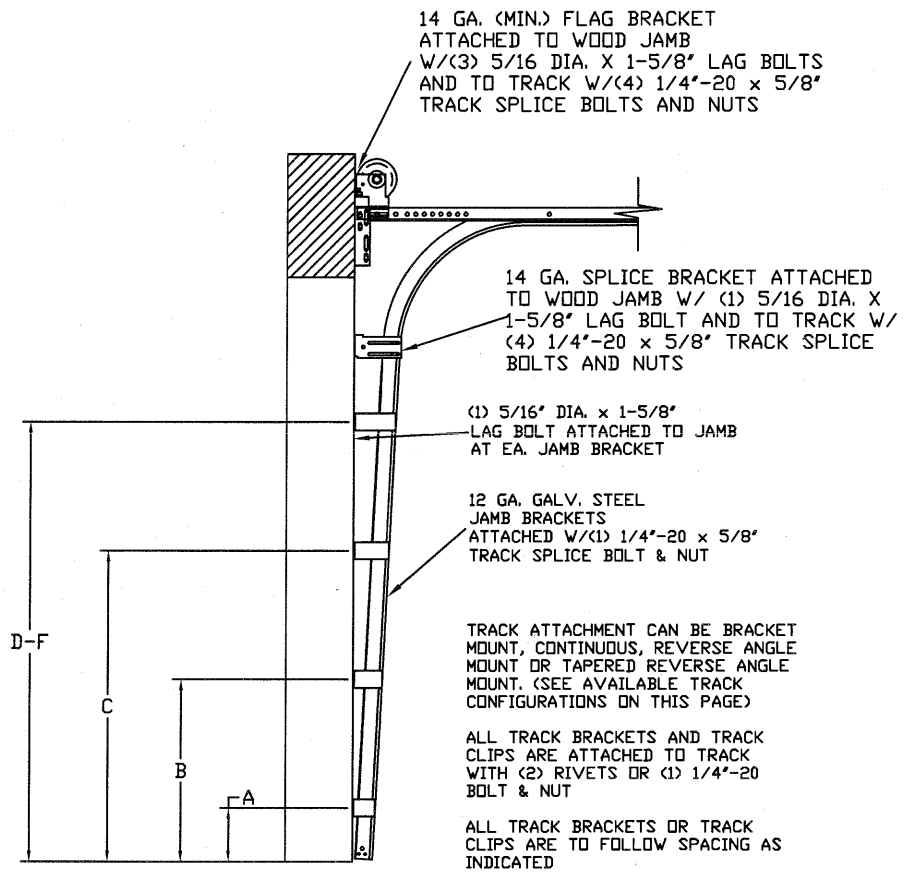
SIZE	DRAWN BY RLR	DATE 08/01/16	DRAWING NUMBER
B	CHECKED BY RLR	DATE 08/01/16	IRC-P516-110-15

ENTREMATIc
165 CARRIAGE COURT WINSTON-SALEM, N.C. 27105

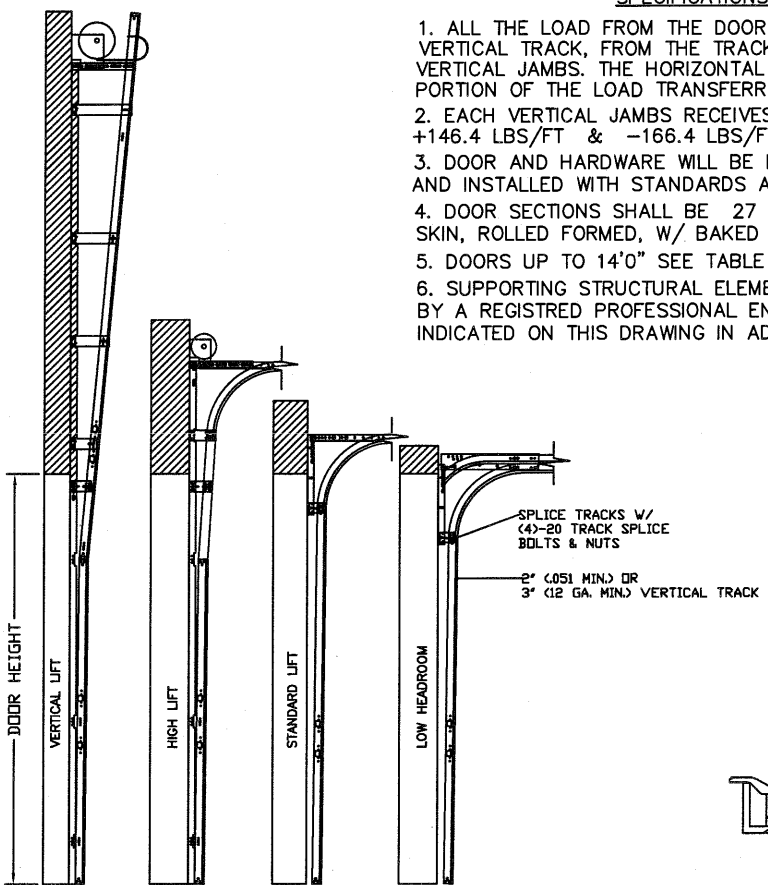
SHEET 1 OF 3

SPECIFICATIONS AND NOTES

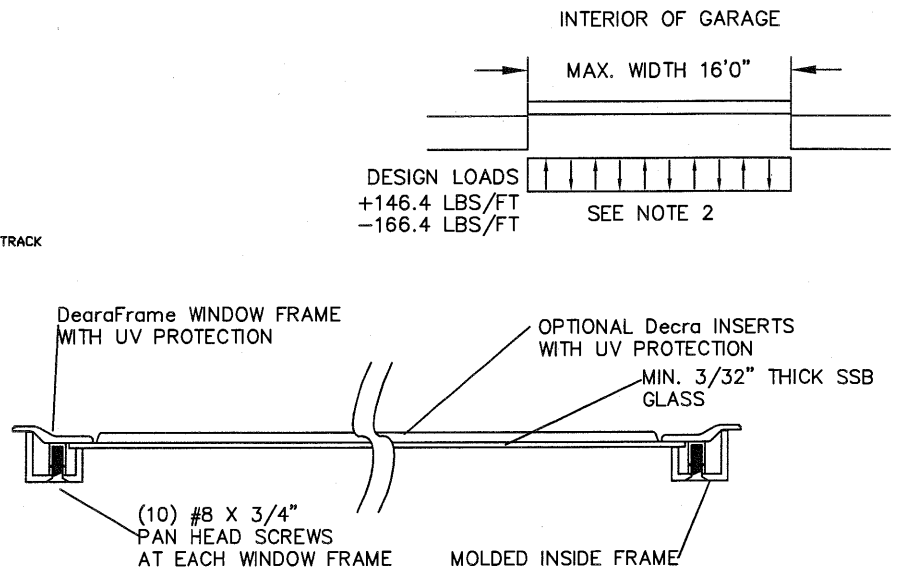
1. ALL THE LOAD FROM THE DOOR IS TRANSFERRED TO THE VERTICAL TRACK, FROM THE TRACK THE LOAD IS TRANSFERRED TO THE VERTICAL JAMBS. THE HORIZONTAL JAMB OR HEADER RECEIVES NO PORTION OF THE LOAD TRANSFERRED FROM THE DOOR.
2. EACH VERTICAL JAMBS RECEIVES MAXIMUM DESIGN LOADS OF: +146.4 LBS/FT & -166.4 LBS/FT
3. DOOR AND HARDWARE WILL BE DESIGNED, MANUFACTURED AND INSTALLED WITH STANDARDS AS SET FORTH BY DASMA.
4. DOOR SECTIONS SHALL BE 27 GA. (.015) MIN. EXTERIOR AND INTERIOR SKIN, ROLLED FORMED, W/ BAKED ON POLYESTER FINISH
5. DOORS UP TO 14'0" SEE TABLE 3 FOR STRUT CONFIGURATION.
6. SUPPORTING STRUCTURAL ELEMENTS SHALL BE DESIGNED BY A REGISTERED PROFESSIONAL ENGINEER FOR WIND LOADS INDICATED ON THIS DRAWING IN ADDITION TO OTHER LOADINGS.



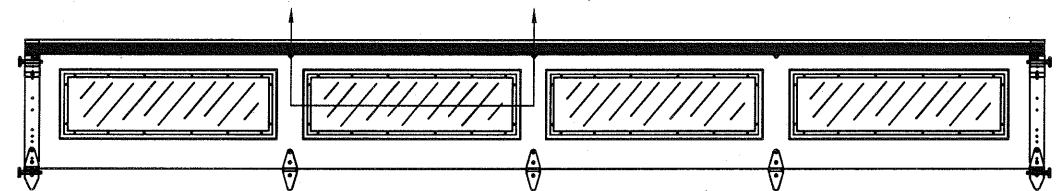
TRACK CONFIGURATION FOR UP TO 14' TALL DOORS
SEE TABLE 1



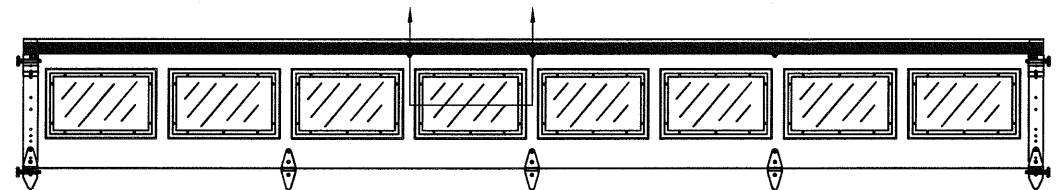
AVAILABLE TRACK CONFIGURATIONS
N.T.S.



SECTION B-B RESIDENTIAL LONG PANEL WINDOW DETAIL
N.T.S.

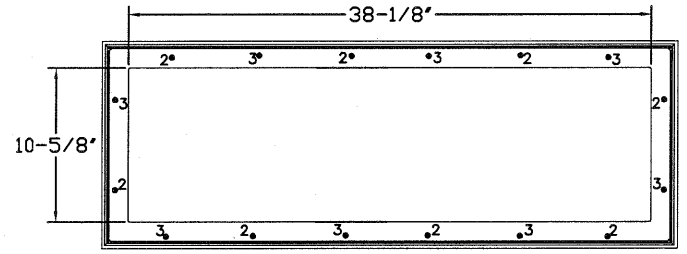


OPTIONAL GLAZED TOP SECTION W/ RESIDENTIAL LONG PANEL WINDOWS AND STRUT LAYOUT
N.T.S.

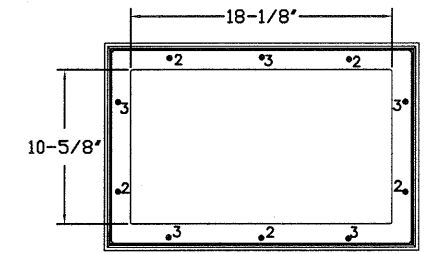


OPTIONAL GLAZED TOP SECTION W/ RESIDENTIAL SHORT PANEL WINDOWS AND STRUT LAYOUT
N.T.S.

TABLE 2



LONG PANEL GLAZING FASTENER DETAIL
N.T.S.



SHORT PANEL GLAZING FASTENER DETAIL
N.T.S.

REV	DESCRIPTION OF REVISIONS	DATE	BY

MAX SIZE 16' x 14'

DESIGN LOADS
+18.3 PSF
-20.8 PSF

TEST LOADS (1.5 x DESIGN LOADS)
+27.5 PSF
-31.2 PSF

STATE OF TEXAS

THOMAS L. SHELMERDINE

85829

LICENSED PROFESSIONAL ENGINEER

TX

Thomas L. Shelmerdine, PE (TX PE #85829)
Structural Solutions, PA (TX Firm #F-004063)

5921-G W. Friendly Ave., Greensboro, NC 27410

Amarr
ENTREMATIC

MODEL P500 AMARR OLYMPUS 500
MODEL D500 AMARR DESIGNERS CHOICE DC-500

SIZE	DRAWN BY	RLR	DATE	08/01/16	DRAWING NUMBER
B	CHECKED BY	RLR	DATE	08/01/16	IRC-P516-110-15

ENTREMATIC
165 CARRIAGE COURT WINSTON-SALEM, N.C. 27105

SHEET 2 OF 3

TABLE 1

DOOR HEIGHT		TRACK ATTACHMENT						TYPICAL SPLICE
		A	B	C	D	E	F	
7' 0"		10.0"	34"	58"				76"
7' 6"		10.0"	34"	58"				82"
8' 0"		10.0"	34"	58"				88"
9' 0"		10.0"	34"	58"	82"			100"
9' 6"		10.0"	34"	58"	82"			106"
10' 0"		10.0"	34"	58"	82"			112"
11' 0"		10.0"	34"	58"	82"	106"		124"
12' 0"		10.0"	34"	58"	82"	106"		136"
13' 0"		10.0"	34"	58"	82"	106"	130"	148"
14' 0"		10.0"	34"	58"	82"	106"	130"	160"

ALL TRACK ATTACHMENTS +/- 2" ALLOWED USING SYP OR SPF NO.2 OR BETTER ONLY

TABLE 2

Section Width (ft)	Panel Type	Center Stile Locations (Measured from Left Edge)				Max Design Loads Allowed	
		1st (in)	2st (in)	3rd (in)	4th (in)	Positive (PSF)	Negative (PSF)
13' 10"	Short	57.16	82.94	108.71		21.1	24.0
13' 10"	Designers Choice	56.56	109.44			16.0	18.2
14' 0"	Short	57.76	83.94	110.11		20.9	23.7
14' 0"	Designers Choice	57.31	110.69			15.8	18.0
14' 2"	Short	58.85	84.94	111.41		20.6	23.4
14' 2"	Designers Choice	58.06	111.94			15.6	17.8
14' 4"	Short	59.16	85.94	112.71		20.4	23.2
14' 4"	Designers Choice	58.81	113.19			15.5	17.6
14' 6"	Short	59.86	86.94	114.01		20.1	22.9
14' 6"	Designers Choice	59.56	114.44			15.3	17.4
14' 8"	Short	60.56	87.94	115.31		19.9	22.6
14' 8"	Designers Choice	60.31	115.69			15.1	17.2
14' 10"	Short	61.26	88.94	116.61		19.7	22.4
14' 10"	Designers Choice	61.06	116.94			15.0	17.0
15' 0"	Short	61.94	89.94	117.94		19.5	22.1
15' 0"	Designers Choice	61.81	118.19			14.8	16.8
15' 2"	Short	62.66	90.94	119.21		19.3	21.9
15' 2"	Designers Choice	62.56	119.44			14.7	16.7
15' 4"	Short	53.60	79.20	104.80	130.40	19.0	21.7
15' 4"	Designers Choice	63.31	120.69			14.5	16.5
15' 6"	Short	46.62	93.00	139.38		18.8	21.4
15' 6"	Designers Choice	47.42	93.00	138.58		18.8	21.4
15' 8"	Short	47.62	94.00	140.38		18.6	21.2
15' 8"	Designers Choice	48.02	94.00	139.98		18.6	21.2
15' 10"	Short	48.62	95.00	141.38		18.4	21.0
15' 10"	Designers Choice	48.62	95.00	141.38		18.4	21.0
16' 0"	Short	49.62	96.00	142.38		18.3	20.8
16' 0"	Designers Choice	48.42	96.00	143.58		18.3	20.8

TABLE 3

DOOR HEIGHT	SECTION							
	Btm	#2	#3	#4	#5	#6	#7	#8
12' 6"-14'-0"	2"	2"	3"	3"	3"	3"	3"	2"
10' 9"-12'-3"	2"	2"	3"	3"	3"	3"	3"	2"
9' 0"-10'-6"	2"	2"	3"	3"	3"	3"	3"	2"
7' 6"-8'-9"	2"	2"	3"	3"	3"	2"		
6' 0"-7'-0"	2"	2"	3"	3"	3"	2"		

WOOD JAMB ATTACHMENT TO STRUCTURE (OPTIONAL)

2 X 6 VERTICAL JAMB ATTACHMENT TO WOOD FRAME STRUCTURE
 5/16" X 3" LAG SCREWS STARTING 6" FROM ENDS THEN 24" O.C. (1 1/2" EMBEDMENT)

2 X 6 VERTICAL JAMB ATTACHMENT TO 2,000 PSI CONCRETE
 HILTI KWIK BOLT 3/8" X 4" STARTING 6" FROM ENDS THEN 24" O.C. (2 1/2" EMBEDMENT)
 HILTI SLEEVE ANCHOR 3/8" X 2-3/4" STARTING 6" FROM ENDS THEN 24" O.C. (1 1/4" EMBEDMENT)
 ITW/RAMSET REDHEAD (TRU-BOLT) 3/8" X 4" STARTING 6" FROM ENDS THEN 24" O.C. (2 1/2" EMBEDMENT)

2 X 6 VERTICAL JAMB ATTACHMENT TO HOLLOW C-90 BLOCK
 SIMPSON 1/4" X 3" TITEN SCREWS STARTING 6" FROM ENDS, USE PAIRS OF FASTENERS (3" APART) AT 24" O.C. (1 1/2" EMBEDMENT)

2 X 6 VERTICAL JAMB ATTACHMENT TO GROUDED C-90 BLOCK (2000 PSI GROUT)
 HILTI SLEEVE ANCHOR 3/8" X 2-3/4" STARTING 6" FROM ENDS THEN 24" O.C. (1 1/4" EMBEDMENT)
 (OR, USE FASTENERS FOR HOLLOW C-90 BLOCK)

*LAGS AND BOLTS CAN BE COUNTERSUNK TO PROVIDE A FLUSH MOUNTING SURFACE.
 *PREPARATION OF WOOD JAMBS BY OTHERS

REV	DESCRIPTION OF REVISIONS	DATE	BY

MAX SIZE 16' x 14'
 DESIGN LOADS +18.3 PSF -20.8 PSF
 TEST LOADS (1.5 x DESIGN LOADS) +27.5 PSF -31.2 PSF

Thomas L. Shelmerdine, PE (TX PE #85829)
 Structural Solutions, PA (TX Firm #F-004063)

TX

Amarr
 ENTREMATIC

MODEL P500 AMARR OLYMPUS 500
 MODEL D500 AMARR DESIGNERS CHOICE DC-500

SIZE	DRAWN BY	RLR	DATE	08/01/16	DRAWING NUMBER
B	CHECKED BY	RLR	DATE	08/01/16	IRC-P516-110-15

ENTREMATIC
 165 CARRIAGE COURT WINSTON-SALEM, N.C. 27105

5921-G W. Friendly Ave., Greensboro, NC 27410

SHEET 3 OF 3