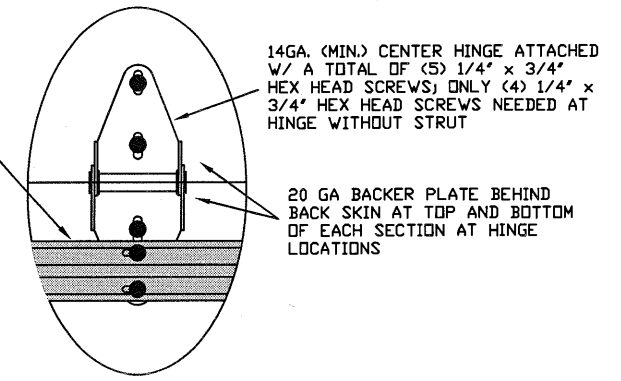
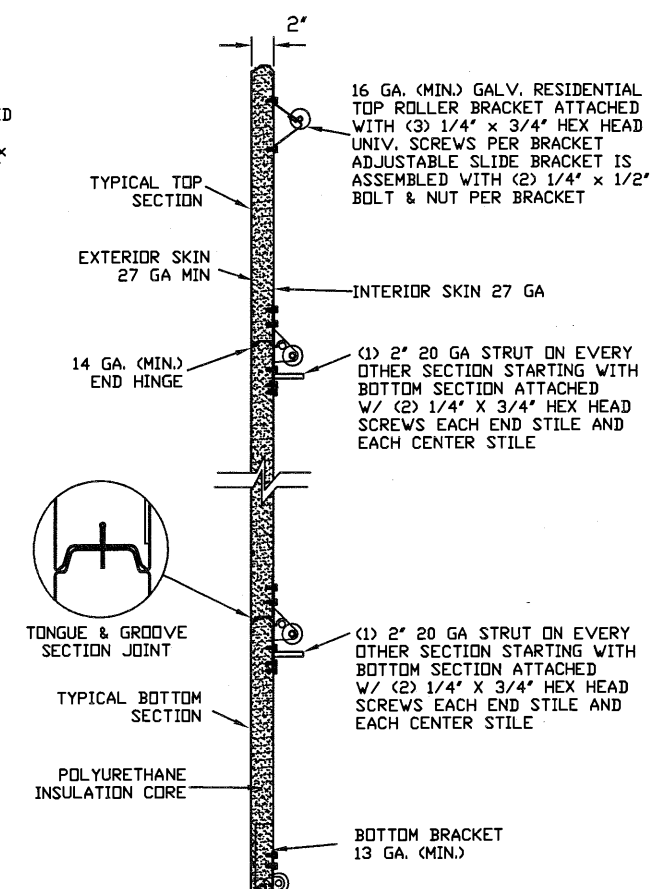


TYPICAL TOP FIXTURES  
N.T.S. 1

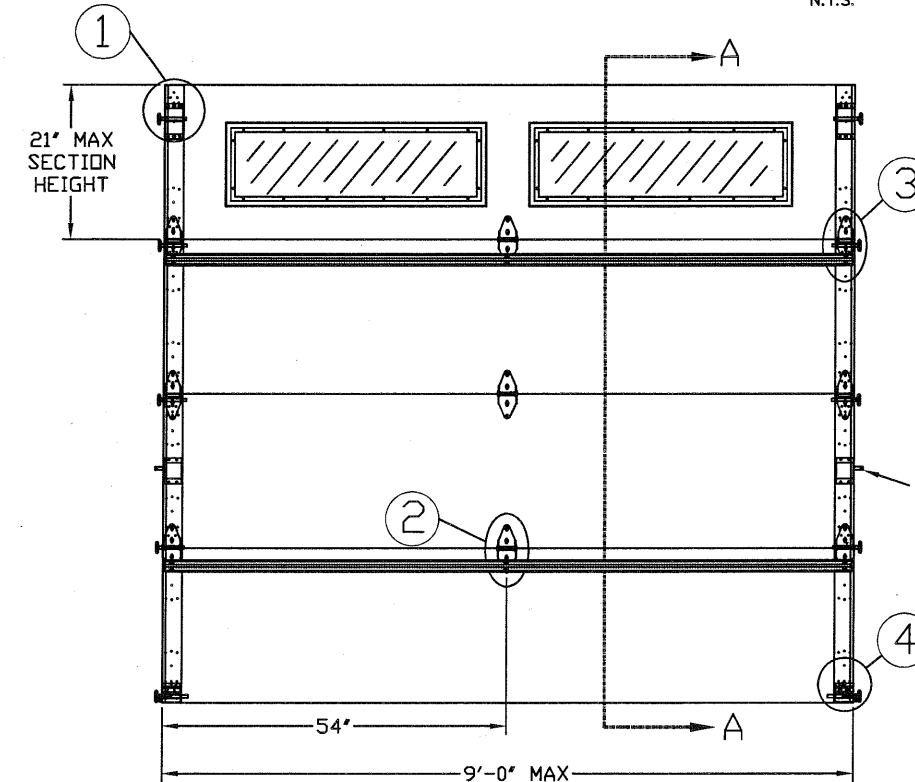


TYPICAL CENTER HINGE  
N.T.S. 2

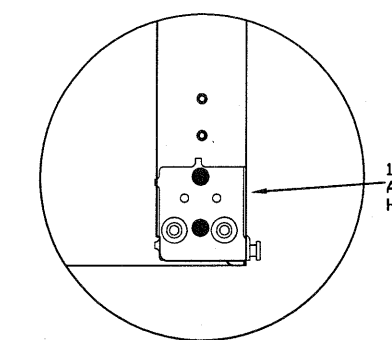


TYPICAL END HINGE  
N.T.S. 3

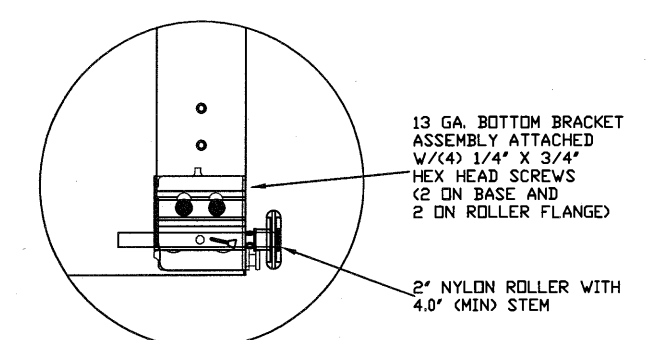
SECTION A-A (SIDE VIEW)  
N.T.S.



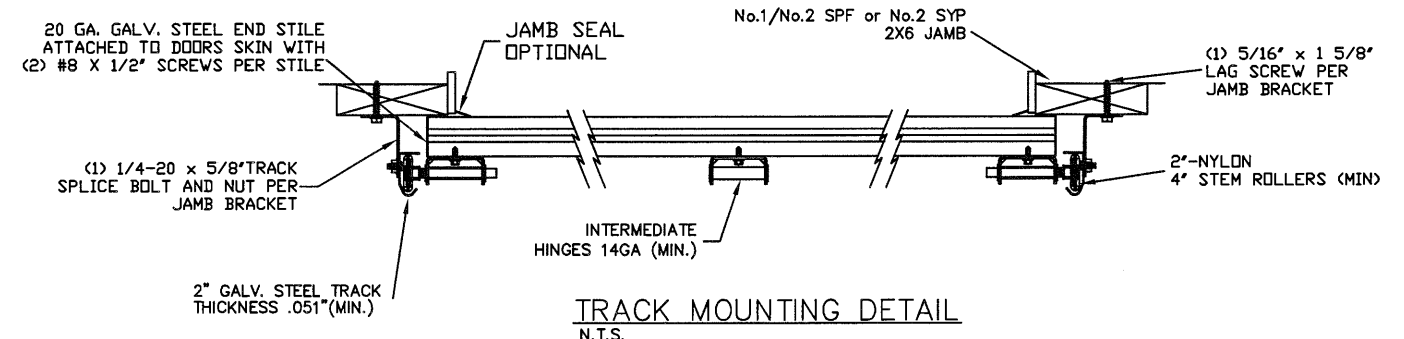
INSIDE ELEVATION  
N.T.S.



TRBB-375 BOTTOM BRACKET  
N.T.S. 4A



TRBB-375 BOTTOM BRACKET  
N.T.S. 4B



TRACK MOUNTING DETAIL  
N.T.S.

THE METHOD OF TESTING WAS IN SUBSTANTIAL CONFORMANCE WITH THE PROCEDURE DESCRIBED IN ASTM E330 AND DASMA 108. THE PRESSURES SHOWN ON THE DRAWINGS WERE CALCULATED USING ASCE 7-98/02/05 WITH THE FOLLOWING PARAMETERS (5 FEET OF DOOR WIDTH IN THE END ZONE, ROOF AT ANY SLOPE, AND I=1.0):

WIND SPEED (MPH)	120	109	104	99	95
EXPOSURE LEVEL	B	C	C	D	D
MEAN ROOF HEIGHT	30'	15'	25'	15'	25'

REV	DESCRIPTION OF REVISIONS	DATE	BY

MAX SIZE 9' x 14'

DESIGN LOADS +22.8 PSF -26.9 PSF

TEST LOADS +34.2 PSF -40.4 PSF

Thomas L. Shelmerdine, PE (TX PE #85829) Structural Solutions, PA (TX Firm #F-004063)

STATE OF TEXAS  
THOMAS L. SHELMERDINE  
85829  
LICENSED PROFESSIONAL ENGINEER

TX  
**Amarr**  
ENTREMATIC

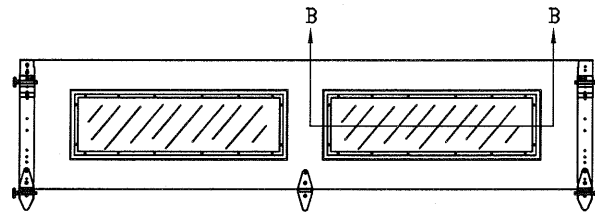
MODEL P500 AMARR OLYMPUS 500  
MODEL D500 AMARR DESIGNERS CHOICE DC-500

SIZE	DRAWN BY	RLR	DATE	08/01/16	DRAWING NUMBER
B	CHECKED BY	RLR	DATE	08/01/16	IRC-P509-120-11

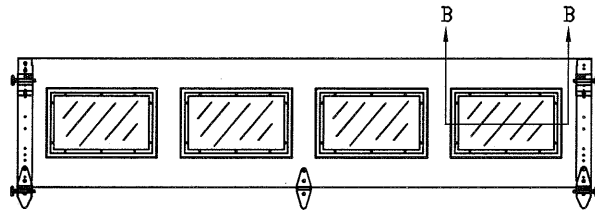
ENTREMATIC  
165 CARRIAGE COURT WINSTON-SALEM, NC 27105

5921-G W. Friendly Ave., Greensboro, NC 27410

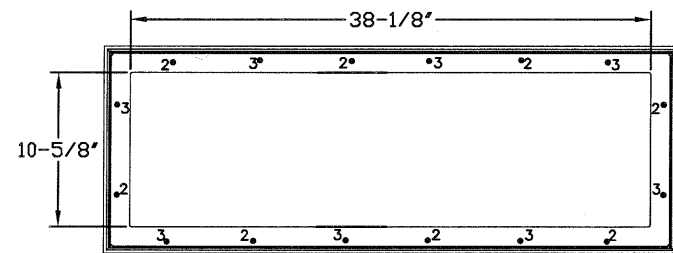
SHEET 1 OF 3



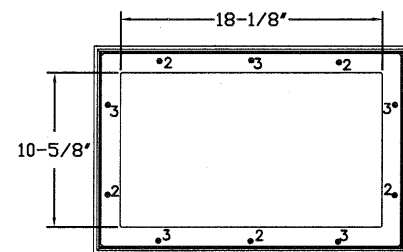
OPTIONAL GLAZED TOP SECTION W/ RESIDENTIAL LONG PANEL WINDOWS  
N.T.S.



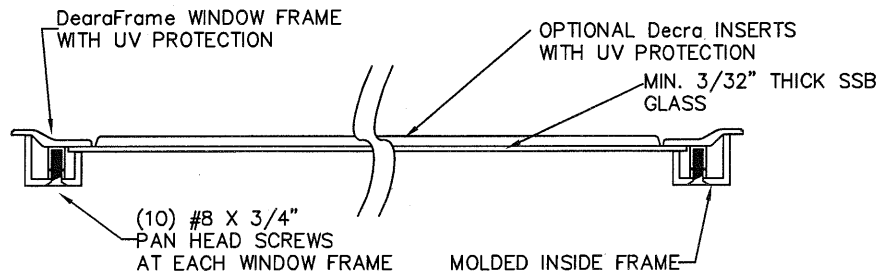
OPTIONAL GLAZED TOP SECTION W/ RESIDENTIAL SHORT PANEL WINDOWS  
N.T.S.



LONG PANEL GLAZING FASTENER DETAIL  
N.T.S.



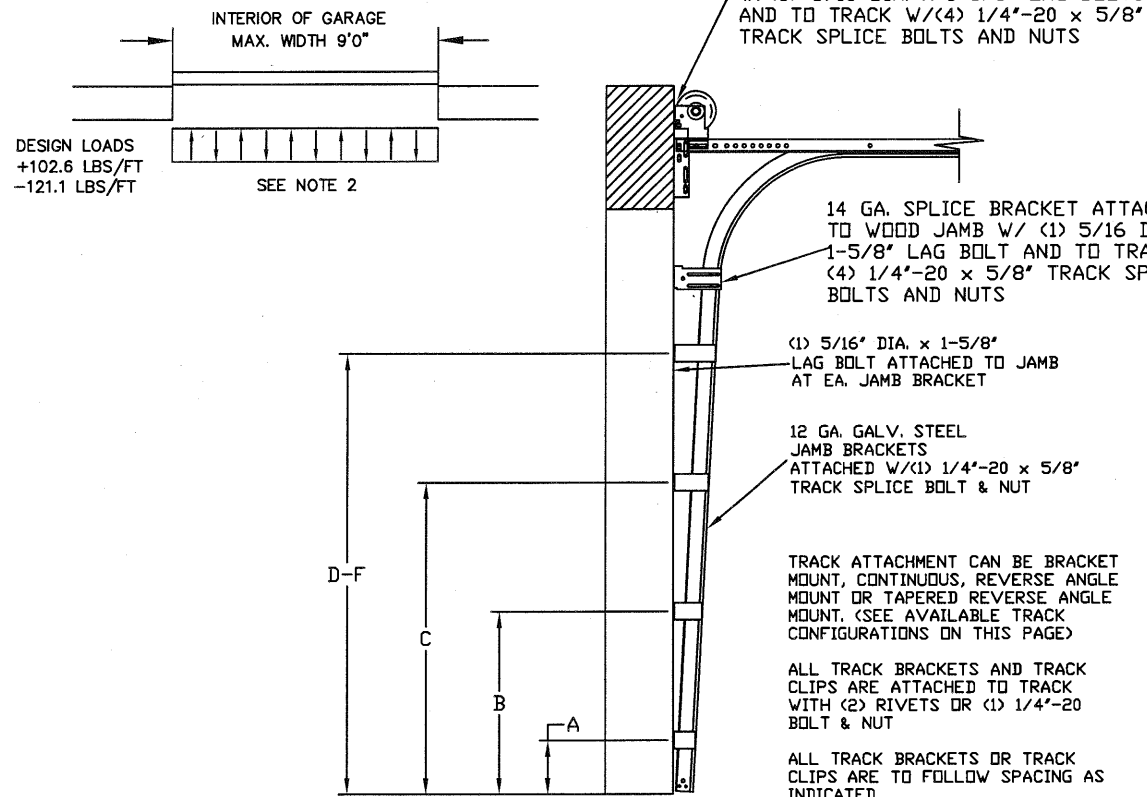
SHORT PANEL GLAZING FASTENER DETAIL  
N.T.S.



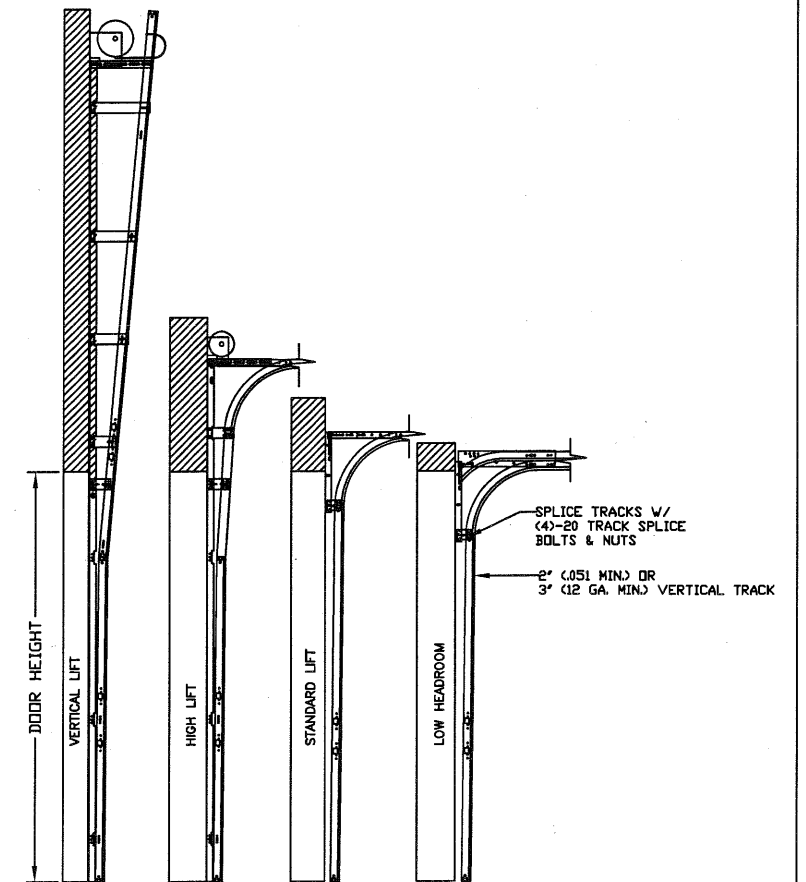
SECTION B-B RESIDENTIAL LONG PANEL WINDOW DETAIL  
N.T.S.

SPECIFICATIONS AND NOTES

1. ALL THE LOAD FROM THE DOOR IS TRANSFERRED TO THE VERTICAL TRACK, FROM THE TRACK THE LOAD IS TRANSFERRED TO THE VERTICAL JAMBS. THE HORIZONTAL JAMB OR HEADER RECEIVES NO PORTION OF THE LOAD TRANSFERRED FROM THE DOOR.
2. EACH VERTICAL JAMBS RECEIVES MAXIMUM DESIGN LOADS OF: +102.6 LBS/FT & -121.1 LBS/FT
3. DOORS AND HARDWARE WILL BE DESIGNED, MANUFACTURED AND INSTALLED WITH STANDARDS AS SET FORTH BY DASMA.
4. DOOR SECTIONS SHALL BE 27 GA. (.015) MIN. EXTERIOR AND INTERIOR SKIN, ROLLED FORMED, W/ BAKED ON POLYESTER FINISH
5. SUPPORTING STRUCTURAL ELEMENTS SHALL BE DESIGNED BY A REGISTERED PROFESSIONAL ENGINEER FOR WIND LOADS INDICATED ON THIS DRAWING IN ADDITION TO OTHER LOADINGS.



TRACK CONFIGURATION FOR UP TO 14' TALL DOORS  
SEE TABLE 1

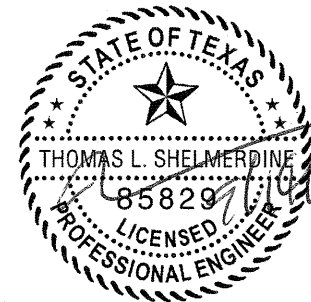


AVAILABLE TRACK CONFIGURATIONS  
N.T.S.

REV	DESCRIPTION OF REVISIONS	DATE	BY

MAX SIZE  
9' x 14'  
DESIGN LOADS  
+22.8 PSF  
-26.9 PSF  
TEST LOADS  
+34.2 PSF  
-40.4 PSF

Thomas L. Shelmerdine, PE (TX PE #85829)  
Structural Solutions, PA (TX Firm #004063)



5921-G W. Friendly Ave., Greensboro, NC 27410

TX

**Amarr**  
ENTREMATIc

MODEL P500 AMARR OLYMPUS 500  
MODEL D500 AMARR DESIGNERS CHOICE DC-500

SIZE	DRAWN BY	RLR	DATE	08/01/16	DRAWING NUMBER
B	CHECKED BY	RLR	DATE	08/01/16	IRC-P509-120-11

TABLE 1

DOOR HEIGHT	TRACK ATTACHMENT						TYPICAL SPLICE
	A	B	C	D	E	F	
7' 0"	10.0"	34"	58"				76"
7' 6"	10.0"	34"	58"				82"
8' 0"	10.0"	34"	58"				88"
9' 0"	10.0"	34"	58"	82"			100"
9' 6"	10.0"	34"	58"	82"			106"
10' 0"	10.0"	34"	58"	82"			112"
11' 0"	10.0"	34"	58"	82"	106"		124"
12' 0"	10.0"	34"	58"	82"	106"		136"
13' 0"	10.0"	34"	58"	82"	106"	130"	148"
14' 0"	10.0"	34"	58"	82"	106"	130"	160"

ALL TRACK ATTACHMENTS +/- 2" ALLOWED USING SYP OR SPF NO.2 OR BETTER ONLY

TABLE 2

Section	Panel Type	Center Stile Location (Measured from Left Edge)		Max Design Loads Allowed	
		1st (in)	2nd (in)	Positive (PSF)	Negative (PSF)
6'0"	Short	24.406	47.594	34.2	40.3
6'0"	Designers Choice	24.644	47.357	34.2	40.3
7'0"	Short	29.200	54.800	29.3	34.5
7'0"	Designers Choice	29.144	54.857	29.3	34.5
7'2"	Short	30.200	55.800	28.6	33.7
7'2"	Designers Choice	29.894	56.107	28.6	33.7
7'4"	Short	31.200	56.800	27.9	33.0
7'4"	Designers Choice	30.644	57.357	27.9	33.0
7'6"	Short	32.200	57.800	27.3	32.2
7'6"	Designers Choice	45.000		27.3	32.2
7'8"	Short	32.200	60.000	26.7	31.5
7'8"	Designers Choice	46.000		26.7	31.5
7'10"	Short	33.000	61.000	26.1	30.9
7'10"	Designers Choice	47.000		26.1	30.9
8'0"	Short	48.000		25.6	30.2
8'0"	Designers Choice	48.000		25.6	30.2
8'2"	Short	49.000		25.1	29.6
8'2"	Designers Choice	49.000		25.1	29.6
8'4"	Short	50.000		24.6	29.0
8'4"	Designers Choice	50.000		24.6	29.0
8'6"	Short	51.000		24.1	28.4
8'6"	Designers Choice	51.000		24.1	28.4
8'8"	Short	52.000		23.6	27.9
8'8"	Designers Choice	52.000		23.6	27.9
8'10"	Short	53.000		23.2	27.4
8'10"	Designers Choice	53.000		23.2	27.4
9'0"	Short	54.000		22.8	26.9
9'0"	Designers Choice	54.000		22.8	26.9

WOOD JAMB ATTACHMENT TO STRUCTURE (OPTIONAL)

**2 X 6 VERTICAL JAMB ATTACHMENT TO WOOD FRAME STRUCTURE**  
 5/16" X 3" LAG SCREWS STARTING 6" FROM ENDS  
 THEN 24" O.C. (1 1/2" EMBEDMENT)

**2 X 6 VERTICAL JAMB ATTACHMENT TO 2,000 PSI CONCRETE**  
 HILTI KWIK BOLT 3/8" X 4" STARTING 6" FROM ENDS  
 THEN 24" O.C. (2 1/2" EMBEDMENT)  
 HILTI SLEEVE ANCHOR 3/8" X 2-3/4" STARTING 6" FROM ENDS  
 THEN 24" O.C. (1 1/4" EMBEDMENT)  
 ITW/RAMSET REDHEAD (TRU-BOLT) 3/8" X 4" STARTING 6" FROM ENDS  
 THEN 24" O.C. (2 1/2" EMBEDMENT)

**2 X 6 VERTICAL JAMB ATTACHMENT TO HOLLOW C-90 BLOCK**  
 SIMPSON 1/4" X 3" TITEN SCREWS STARTING 6" FROM ENDS,  
 USE PAIRS OF FASTENERS (3" APART)  
 AT 24" O.C. (1 1/2" EMBEDMENT)  
 HILTI 1/4" X 2-3/4" KWIK-CON II+ SCREWS STARTING 6" FROM ENDS,  
 USE PAIRS OF FASTENERS (3" APART) AT 24" O.C. (1 1/4" EMBEDMENT)

**2 X 6 VERTICAL JAMB ATTACHMENT TO GROUTED C-90 BLOCK (2000 PSI GROUT)**  
 HILTI SLEEVE ANCHOR 3/8" X 2-3/4" STARTING 6" FROM ENDS  
 THEN 24" O.C. (1 1/4" EMBEDMENT)  
 (OR, USE FASTENERS FOR HOLLOW C-90 BLOCK)

\*LAGS AND BOLTS CAN BE COUNTERSUNK TO PROVIDE A FLUSH MOUNTING SURFACE.  
 \*PREPARATION OF WOOD JAMBS BY OTHERS

REV	DESCRIPTION OF REVISIONS	DATE	BY

MAX SIZE  
9' x 14'

DESIGN LOADS  
+22.8 PSF  
-26.9 PSF

TEST LOADS  
+34.2 PSF  
-40.4 PSF

Thomas L. Shelmerdine, PE (TX PE #85829)  
Structural Solutions, PA (TX Firm #F-004063)

TX

**Amarr**  
ENTREMATIc

MODEL P500 AMARR OLYMPUS 500  
MODEL D500 AMARR DESIGNERS CHOICE DC-500

SIZE	DRAWN BY	RLR	DATE	08/01/16	DRAWING NUMBER
B	CHECKED BY	RLR	DATE	08/01/16	IRC-P509-120-11

ENTREMATIc  
165 CARRIAGE COURT WINSTON-SALEM, NC 27105

SHEET 3 OF 3

5921-G.W. Friendly Ave., Greensboro, NC 27410