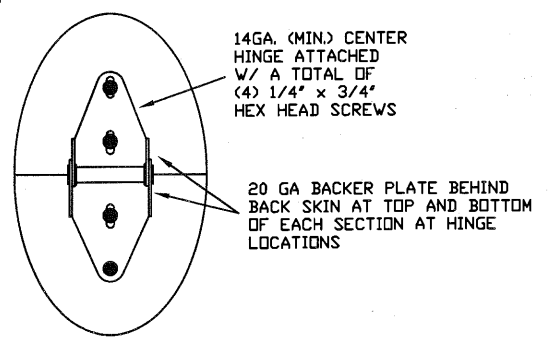
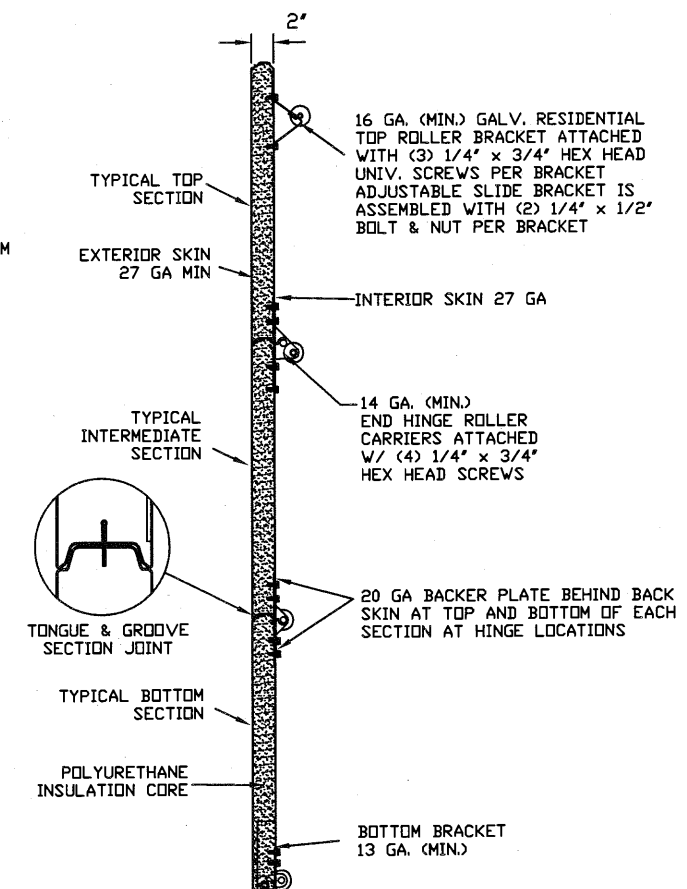


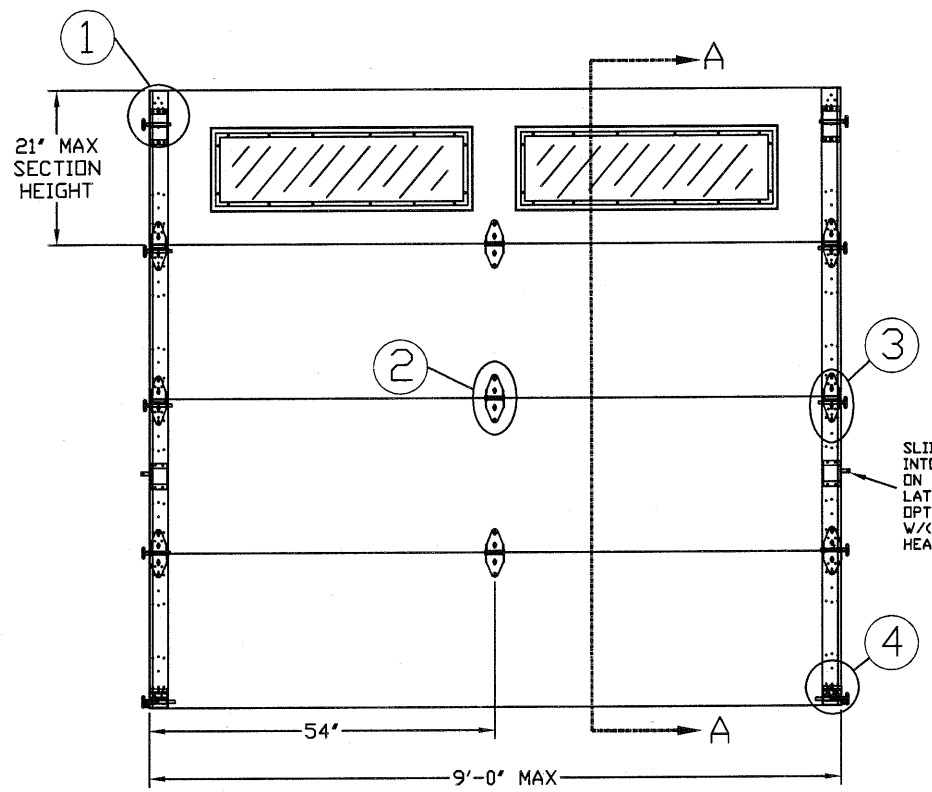
TYPICAL TOP FIXTURES
N.T.S. 1



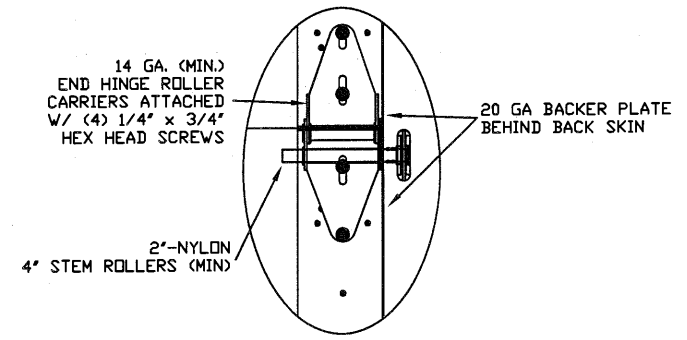
TYPICAL CENTER HINGE
N.T.S. 2



SECTION A-A (SIDE VIEW)

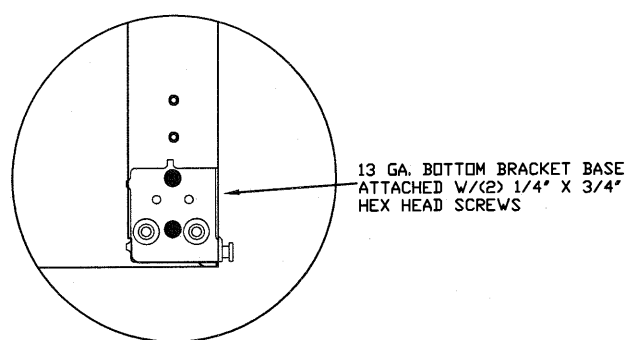


INSIDE ELEVATION
N.T.S.

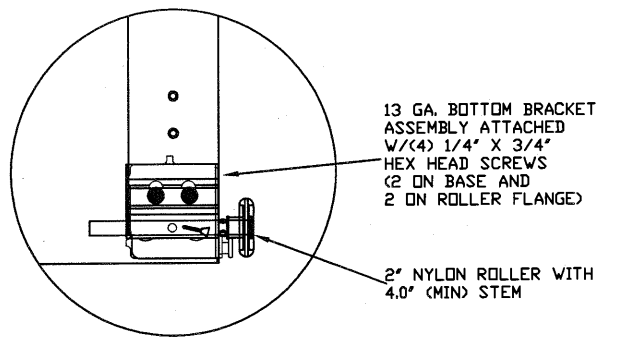


TYPICAL END HINGE
N.T.S. 3

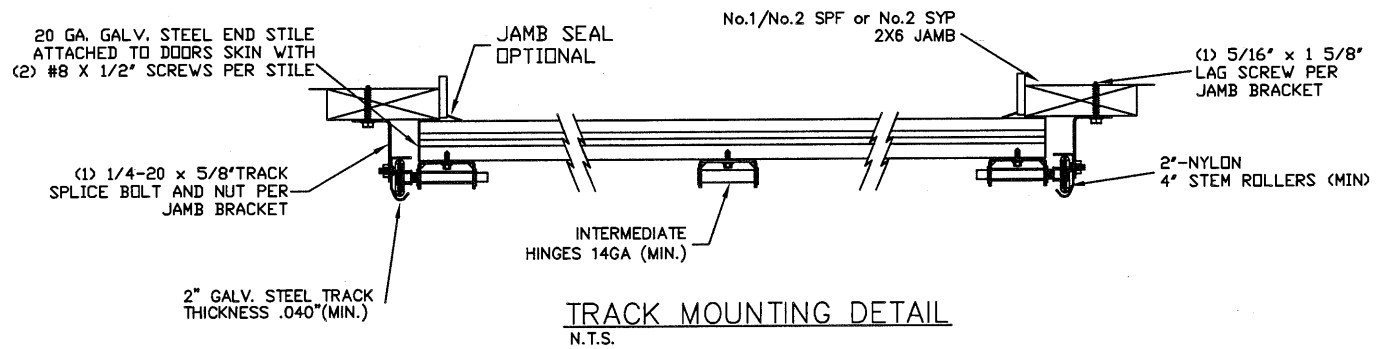
SLIDE LOCK ENGAGES INTO VERTICAL TRACK ON BOTH SIDES (SNAP LATCH, OR LOCK BAR OPTIONAL) ATTACH W/ (2) 1/4\"/>



TRBB-375 BOTTOM BRACKET
N.T.S. 4A



TRBB-375 BOTTOM BRACKET
N.T.S. 4B



TRACK MOUNTING DETAIL
N.T.S.

THE METHOD OF TESTING WAS IN SUBSTANTIAL CONFORMANCE WITH THE PROCEDURE DESCRIBED IN ASTM E330 AND DASMA 108. THE PRESSURES SHOWN ON THE DRAWINGS WERE CALCULATED USING ASCE 7-98/02/05 WITH THE FOLLOWING PARAMETERS (5 FEET OF DOOR WIDTH IN THE END ZONE, ROOF AT ANY SLOPE, AND I=1.0):

WIND SPEED (MPH)	100	91	86	82	79
EXPOSURE LEVEL	B	C	C	D	D
MEAN ROOF HEIGHT	30'	15'	25'	15'	25'

REV	DESCRIPTION OF REVISIONS	DATE	BY

MAX SIZE
9' x 14'
DESIGN LOADS
+15.8 PSF
-18.7 PSF
TEST LOADS
+23.7 PSF
-28.0 PSF

Thomas L. Shelmerdine, PE (TX PE #85829)
Structural Solutions, PA (TX Firm #F-004063)

TX

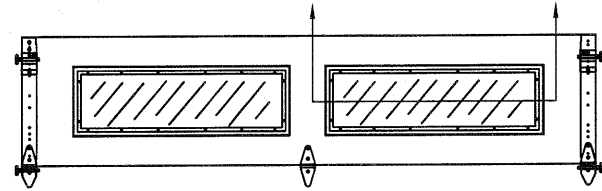
5921-G W. Friendly Ave., Greensboro, NC 27410

ENTRE//MATIC

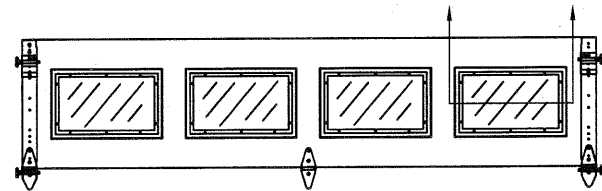
165 CARRIAGE COURT WINSTON-SALEM, N.C. 27105

**MODEL C500 (CLAMSHELL)
AMARR OLYMPUS**

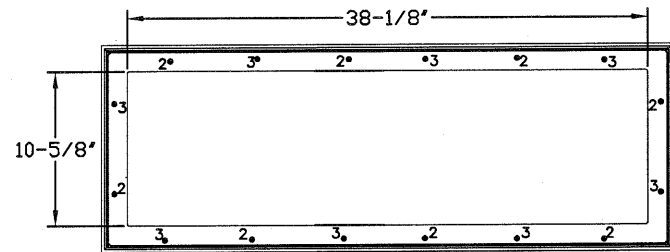
SIZE	DRAWN BY	RS	DATE	8/07/15	DRAWING NUMBER
B	CHECKED BY	RLR	DATE	8/07/15	IRC-C509-100-00
					SHEET 1 OF 3



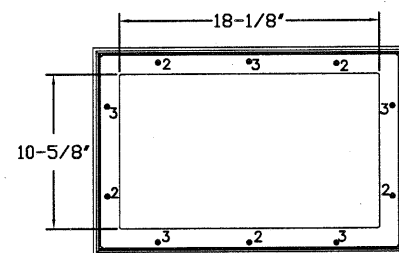
OPTIONAL GLAZED TOP SECTION W/ RESIDENTIAL LONG PANEL WINDOWS
N.T.S.



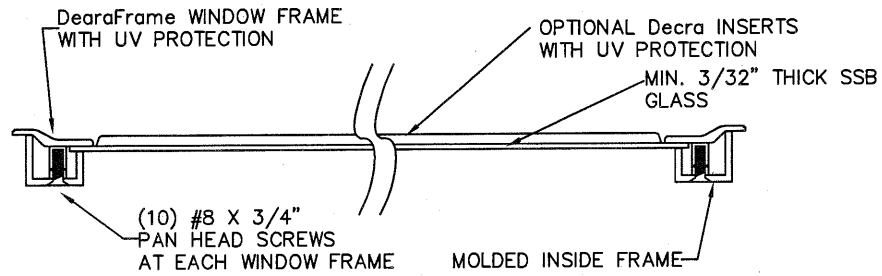
OPTIONAL GLAZED TOP SECTION W/ RESIDENTIAL SHORT PANEL WINDOWS
N.T.S.



LONG PANEL GLAZING FASTENER DETAIL
N.T.S.



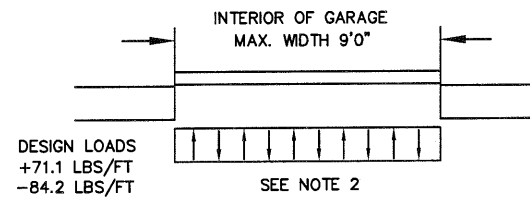
SHORT PANEL GLAZING FASTENER DETAIL
N.T.S.



SECTION B-B RESIDENTIAL LONG PANEL WINDOW DETAIL
N.T.S.

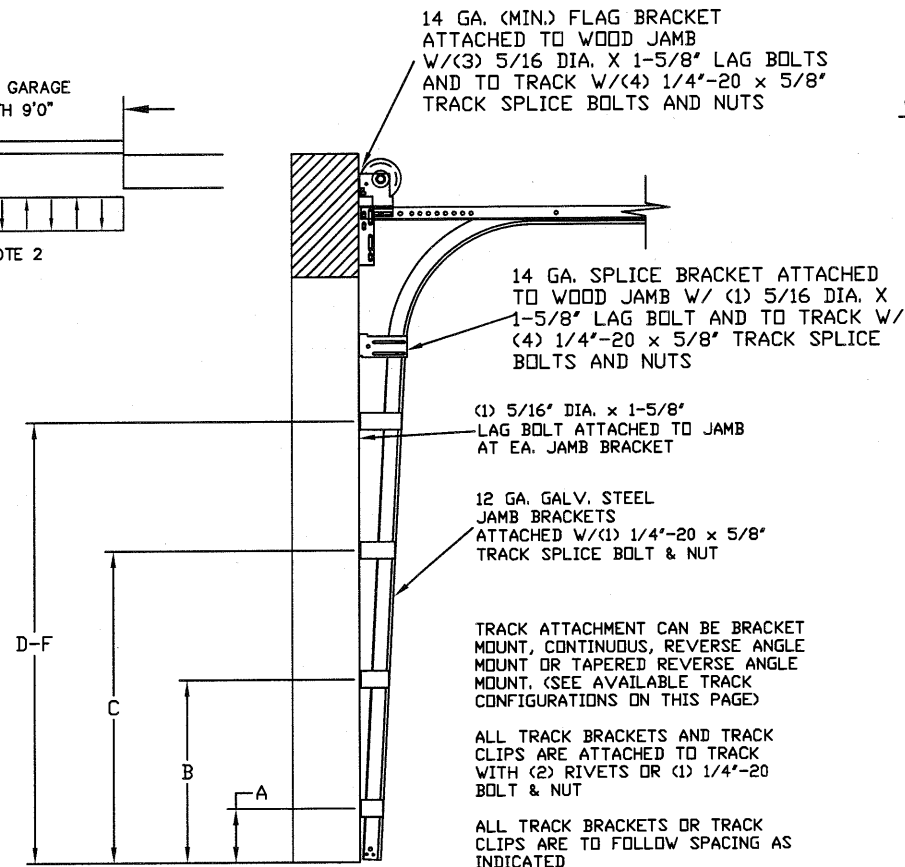
SPECIFICATIONS AND NOTES

1. ALL THE LOAD FROM THE DOOR IS TRANSFERRED TO THE VERTICAL TRACK, FROM THE TRACK THE LOAD IS TRANSFERRED TO THE VERTICAL JAMBS. THE HORIZONTAL JAMB OR HEADER RECEIVES NO PORTION OF THE LOAD TRANSFERRED FROM THE DOOR.
2. EACH VERTICAL JAMBS RECEIVES MAXIMUM DESIGN LOADS OF: +71.1 LBS/FT & -84.2 LBS/FT
3. DOORS AND HARDWARE WILL BE DESIGNED, MANUFACTURED AND INSTALLED WITH STANDARDS AS SET FORTH BY DASMA.
4. DOOR SECTIONS SHALL BE 27 GA. (.015) MIN. EXTERIOR AND INTERIOR SKIN, ROLLED FORMED, W/ BAKED ON POLYESTER FINISH
5. SUPPORTING STRUCTURAL ELEMENTS SHALL BE DESIGNED BY A REGISTERED PROFESSIONAL ENGINEER FOR WIND LOADS INDICATED ON THIS DRAWING IN ADDITION TO OTHER LOADINGS.



DESIGN LOADS
+71.1 LBS/FT
-84.2 LBS/FT

SEE NOTE 2



14 GA. (MIN.) FLAG BRACKET ATTACHED TO WOOD JAMB W/ (3) 5/16 DIA. X 1-5/8" LAG BOLTS AND TO TRACK W/ (4) 1/4"-20 X 5/8" TRACK SPLICE BOLTS AND NUTS

14 GA. SPLICE BRACKET ATTACHED TO WOOD JAMB W/ (1) 5/16 DIA. X 1-5/8" LAG BOLT AND TO TRACK W/ (4) 1/4"-20 X 5/8" TRACK SPLICE BOLTS AND NUTS

(1) 5/16" DIA. X 1-5/8" LAG BOLT ATTACHED TO JAMB AT EA. JAMB BRACKET

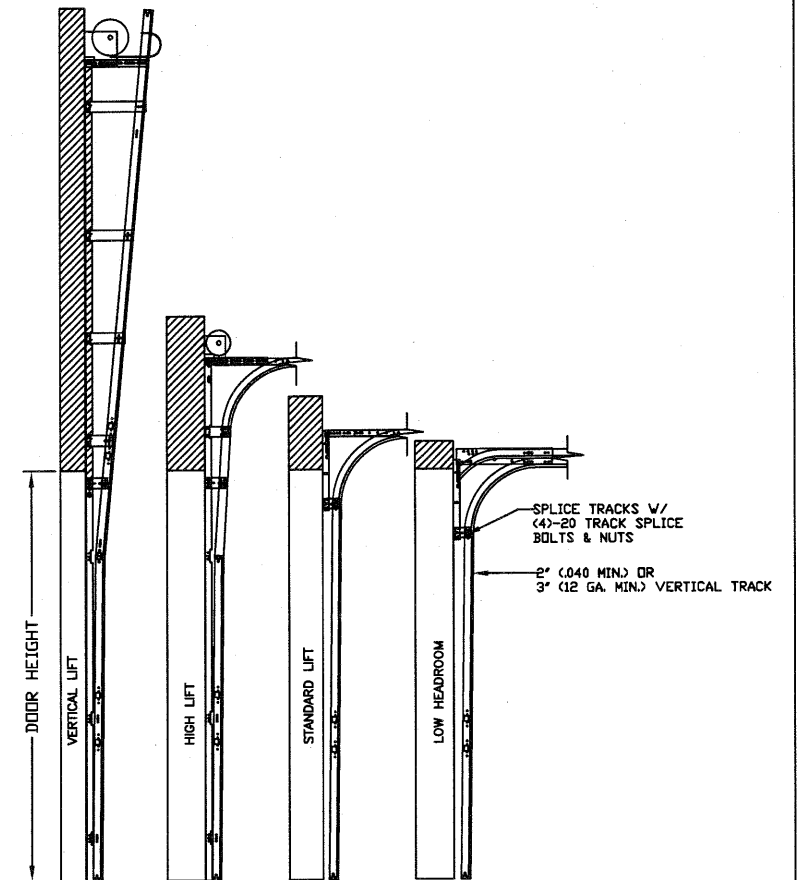
12 GA. GALV. STEEL JAMB BRACKETS ATTACHED W/ (1) 1/4"-20 X 5/8" TRACK SPLICE BOLT & NUT

TRACK ATTACHMENT CAN BE BRACKET MOUNT, CONTINUOUS, REVERSE ANGLE MOUNT OR TAPERED REVERSE ANGLE MOUNT. (SEE AVAILABLE TRACK CONFIGURATIONS ON THIS PAGE)

ALL TRACK BRACKETS AND TRACK CLIPS ARE ATTACHED TO TRACK WITH (2) RIVETS OR (1) 1/4"-20 BOLT & NUT

ALL TRACK BRACKETS OR TRACK CLIPS ARE TO FOLLOW SPACING AS INDICATED

TRACK CONFIGURATION FOR UP TO 14' TALL DOORS
SEE TABLE 1

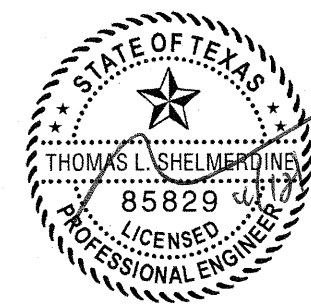


AVAILABLE TRACK CONFIGURATIONS
N.T.S.

REV	DESCRIPTION OF REVISIONS	DATE	BY

MAX SIZE
9' x 14'
DESIGN LOADS
+15.8 PSF
-18.7 PSF
TEST LOADS
+23.7 PSF
-28.0 PSF

Thomas L. Shelmerdine, PE (TX PE #85829)
Structural Solutions, PA (TX Firm #F-004063)



TX

5921-G W. Friendly Ave., Greensboro, NC 27410

ENTRE/MATIC

165 CARRIAGE COURT WINSTON-SALEM, NC. 27105

**MODEL C500 (CLAMSHELL)
AMARR OLYMPUS**

SIZE	DRAWN BY	RS	DATE	8/07/15	DRAWING NUMBER
B	CHECKED BY	RLR	DATE	8/07/15	IRC-C509-100-00

SHEET 2 OF 3

TABLE 1

DOOR HEIGHT		TRACK ATTACHMENT						TYPICAL SPLICE
		A	B	C	D	E	F	
7'	0"	10.0"	38"					76"
7'	6"	10.0"	34"	58"				82"
8'	0"	10.0"	34"	58"				88"
9'	0"	10.0"	34"	58"	82"			100"
9'	6"	10.0"	34"	58"	82"			106"
10'	0"	10.0"	34"	58"	82"			112"
11'	0"	10.0"	34"	58"	82"	106"		124"
12'	0"	10.0"	34"	58"	82"	106"		136"
13'	0"	10.0"	34"	58"	82"	106"	130"	148"
14'	0"	10.0"	34"	58"	82"	106"	130"	160"

ALL TRACK ATTACHMENTS +/- 2" ALLOWED USING SYP OR SPF NO.2 OR BETTER ONLY

TABLE 2

Section Width (ft)	Panel Type	Center Stile Location (Measured from Left Edge)		Max Design Loads Allowed	
		1st (in)	2nd (in)	Positive (PSF)	Negative (PSF)
6' 0	Short	24.406	47.594	23.7	28.0
7' 0	Short	29.200	54.800	20.3	24.0
7' 2	Short	30.200	55.800	19.8	23.4
7' 4	Short	31.200	56.800	19.3	22.9
7' 6	Short	32.200	57.800	18.9	22.4
7' 8	Short	32.200	60.000	18.5	21.9
7' 10	Short	33.000	61.000	18.1	21.4
8' 0	Short	48.000		17.7	21.0
8' 2	Short	49.000		17.4	20.6
8' 4	Short	50.000		17.0	20.1
8' 6	Short	51.000		16.7	19.8
8' 8	Short	52.000		16.4	19.4
8' 10	Short	53.000		16.0	19.0
9' 0	Short	54.000		15.8	18.7

WOOD JAMB ATTACHMENT TO STRUCTURE (OPTIONAL)

2 X 6 VERTICAL JAMB ATTACHMENT TO WOOD FRAME STRUCTURE
 5/16" X 3" LAG SCREWS STARTING 6" FROM ENDS
 THEN 24" O.C. (1 1/2" EMBEDMENT)

2 X 6 VERTICAL JAMB ATTACHMENT TO 2,000 PSI CONCRETE
 HILTI KWIK BOLT 3/8" X 4" STARTING 6" FROM ENDS
 THEN 24" O.C. (2 1/2" EMBEDMENT)
 HILTI SLEEVE ANCHOR 3/8" X 2-3/4" STARTING 6" FROM ENDS
 THEN 24" O.C. (1 1/4" EMBEDMENT)
 ITW/RAMSET REDHEAD (TRU-BOLT) 3/8" X 4" STARTING 6" FROM ENDS
 THEN 24" O.C. (2 1/2" EMBEDMENT)

2 X 6 VERTICAL JAMB ATTACHMENT TO HOLLOW C-90 BLOCK
 SIMPSON 1/4" X 3" TITEN SCREWS STARTING 6" FROM ENDS,
 USE PAIRS OF FASTENERS (3" APART)
 AT 24" O.C. (1 1/2" EMBEDMENT)
 HILTI 1/4" X 2-3/4" KWIK-CON II+ SCREWS STARTING 6" FROM ENDS,
 USE PAIRS OF FASTENERS (3" APART) AT 24" O.C. (1 1/4" EMBEDMENT)

2 X 6 VERTICAL JAMB ATTACHMENT TO GROUTED C-90 BLOCK (2000 PSI GROUT)
 HILTI SLEEVE ANCHOR 3/8" X 2-3/4" STARTING 6" FROM ENDS
 THEN 24" O.C. (1 1/4" EMBEDMENT)
 (OR, USE FASTENERS FOR HOLLOW C-90 BLOCK)

*LAGS AND BOLTS CAN BE COUNTERSUNK TO PROVIDE A FLUSH MOUNTING SURFACE.
 *PREPARATION OF WOOD JAMBS BY OTHERS

REV	DESCRIPTION OF REVISIONS	DATE	BY

MAX SIZE
 9' x 14'

DESIGN LOADS
 +15.8 PSF
 -18.7 PSF

TEST LOADS
 +23.7 PSF
 -28.0 PSF

Thomas L. Shelmerdine, PE (TX PE #85829)
 Structural Solutions, PA (TX Firm #F-004063)

TX

ENTREMATIIC
 165 CARRIAGE COURT WINSTON-SALEM, N.C. 27105

**MODEL C500 (CLAMSHELL)
 AMARR OLYMPUS**

SIZE	DRAWN BY RS	DATE 8/07/15	DRAWING NUMBER
B	CHECKED BY RLR	DATE 8/07/15	IRC-C509-100-00

SHEET 3 OF 3