

THE METHOD OF TESTING WAS IN SUBSTANTIAL CONFORMANCE WITH THE PROCEDURE DESCRIBED IN ASTM E330 AND DASMA 108. THE PRESSURES SHOWN ON THE DRAWINGS WERE CALCULATED USING ASCE 7-98/02/05 WITH THE FOLLOWING PARAMETERS (5 FEET OF DOOR WIDTH IN THE END ZONE, ROOF AT ANY SLOPE, AND I=1.0):

WIND SPEED (MPH)	133	121	115	110	105
EXPOSURE LEVEL	B	C	C	D	D
MEAN ROOF HEIGHT	30'	15'	25'	15'	25'

- SPECIFICATIONS AND NOTES**
- ALL THE LOAD FROM THE DOOR IS TRANSFERRED TO THE VERTICAL TRACK. FROM THE TRACK THE LOAD IS TRANSFERRED TO THE VERTICAL JAMBS. THE HORIZONTAL JAMB OR HEADER RECEIVES NO PORTION OF THE LOAD TRANSFERRED FROM THE DOOR.
 - EACH VERTICAL JAMB RECEIVES MAXIMUM DESIGN LOADS OF: +219.2 LBS/FT & -244.0 LBS/FT
 - DOORS AND HARDWARE WILL BE DESIGNED, MANUFACTURED AND INSTALLED WITH STANDARDS AS SET FORTH BY DASMA.
 - DOOR SECTIONS SHALL BE 25 GA. MIN. (.019") ROLLED FORMED LIGHT COMMERCIAL QUALITY.
 - SUPPORTING STRUCTURAL ELEMENTS SHALL BE DESIGNED BY A REGISTERED PROFESSIONAL ENGINEER FOR WIND LOADS INDICATED ON THIS DRAWING IN ADDITION TO OTHER LOADINGS.
 - REFER TO TABLES ON THE PAGE 3 FOR ADDITIONAL DOOR WIDTHS AND THEIR DESIGN PRESSURES

REV	DESCRIPTION OF REVISIONS	DATE	BY

MAX SIZE
16' WIDTH
14' HEIGHT
(DOOR HEIGHT SUBJECT TO WEIGHT LIMITATIONS)

DESIGN LOADS
+27.4 PSF
-30.5 PSF

TEST LOADS
+41.1 PSF
-45.8 PSF

Thomas L. Shelmerdine, PE (TX PE #85829)
Structural Solutions, PA (TX Firm #F-004063)

STATE OF TEXAS
THOMAS L. SHELMERDINE
85829
LICENSED PROFESSIONAL ENGINEER

TX

Amarr
ENTRE/MATIC
165 CARRIAGE COURT WINSTON-SALEM, N.C. 27105

MODEL #650 OAK SUMMIT w/DuraSafe
MODEL #600 STRATFORD w/DuraSafe
MODEL #950 HERITAGE w/DuraSafe
Short, Long, Flush & Oak Summit Panel's

SIZE	DRAWN BY	RLR	DATE	03/3/14	DRAWING NUMBER
B	CHECKED BY		DATE		IRC-6016-133-17

SHEET 1 OF 3

WOOD JAMB ATTACHMENT TO STRUCTURE

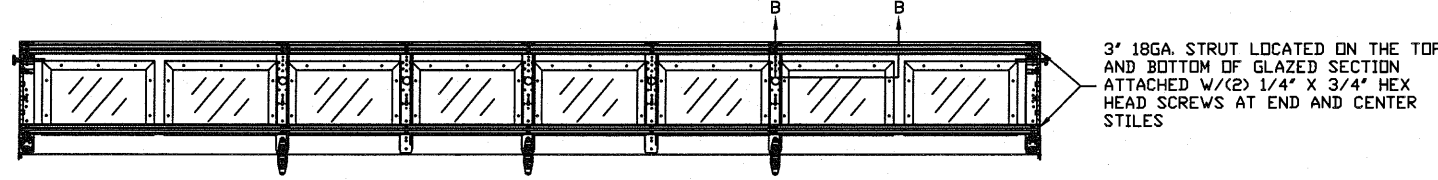
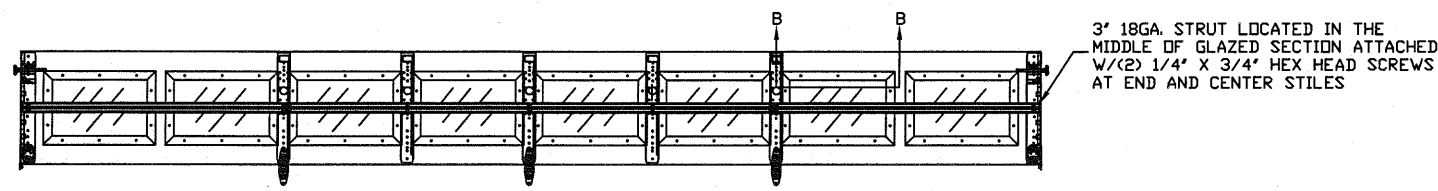
2 X 6 VERTICAL JAMB ATTACHMENT TO WOOD FRAME STRUCTURE
 5/16" X 3" LAG SCREWS STARTING 6" FROM ENDS THEN 22" O.C. (1 1/2" EMBEDMENT)

2 X 6 VERTICAL JAMB ATTACHMENT TO 2,000 PSI CONCRETE
 HILTI KWIK BOLT 3/8" X 4" STARTING 6" FROM ENDS THEN 24" O.C. (2 1/2" EMBEDMENT)
 HILTI SLEEVE ANCHOR 3/8" X 2-3/4" STARTING 6" FROM ENDS THEN 20" O.C. (1 1/4" EMBEDMENT)
 ITW/RAMSET REDHEAD (TRU-BOLT) 3/8" X 4" STARTING 6" FROM ENDS THEN 24" O.C. (2 1/2" EMBEDMENT)

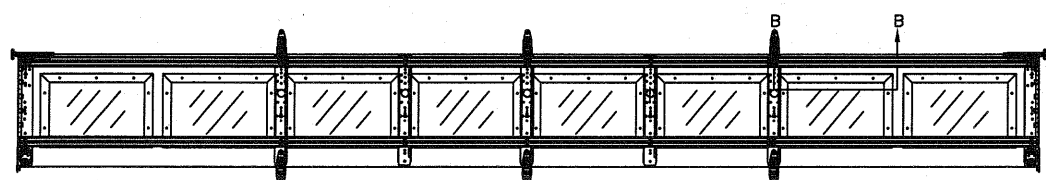
2 X 6 VERTICAL JAMB ATTACHMENT TO HOLLOW C-90 BLOCK
 SIMPSON 1/4" X 3" TITEN SCREWS STARTING 6" FROM ENDS, USE PAIRS OF FASTENERS (3" APART) AT 16" O.C. (1 1/2" EMBEDMENT)
 HILTI 1/4" X 2-3/4" KWIK-CON II+ SCREWS STARTING 6" FROM ENDS, USE PAIRS OF FASTENERS (3" APART) AT 16" O.C. (1 1/4" EMBEDMENT)

2 X 6 VERTICAL JAMB ATTACHMENT TO GROUTED C-90 BLOCK (2000 PSI GROUT)
 HILTI SLEEVE ANCHOR 3/8" X 2-3/4" STARTING 6" FROM ENDS THEN 22" O.C. (1 1/4" EMBEDMENT) (OR, USE FASTENERS FOR HOLLOW C-90 BLOCK)

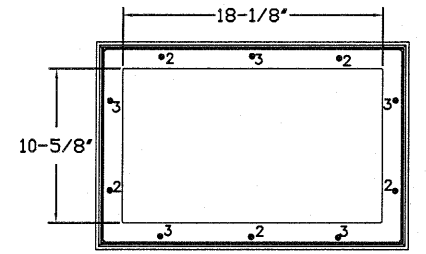
*LAGS AND BOLTS CAN BE COUNTERSUNK TO PROVIDE A FLUSH MOUNTING SURFACE.
 *PREPARATION OF WOOD JAMBS BY OTHERS



OPTIONAL SHORT PANEL TOP GLAZED SECTION (STRUT AND STILE LAYOUTS)



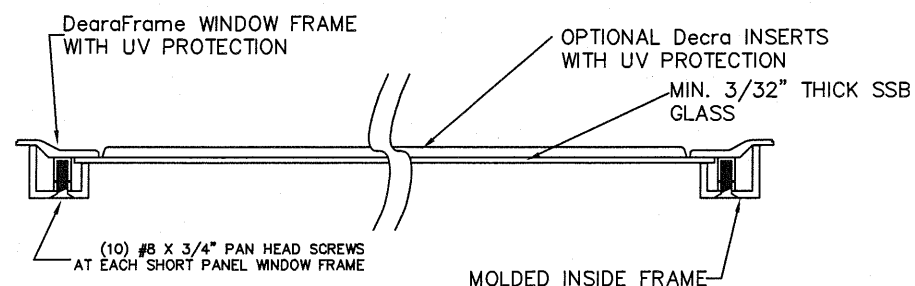
OPTIONAL SHORT PANEL INTERMEDIATE GLAZED SECTION (STRUT AND STILE LAYOUT)



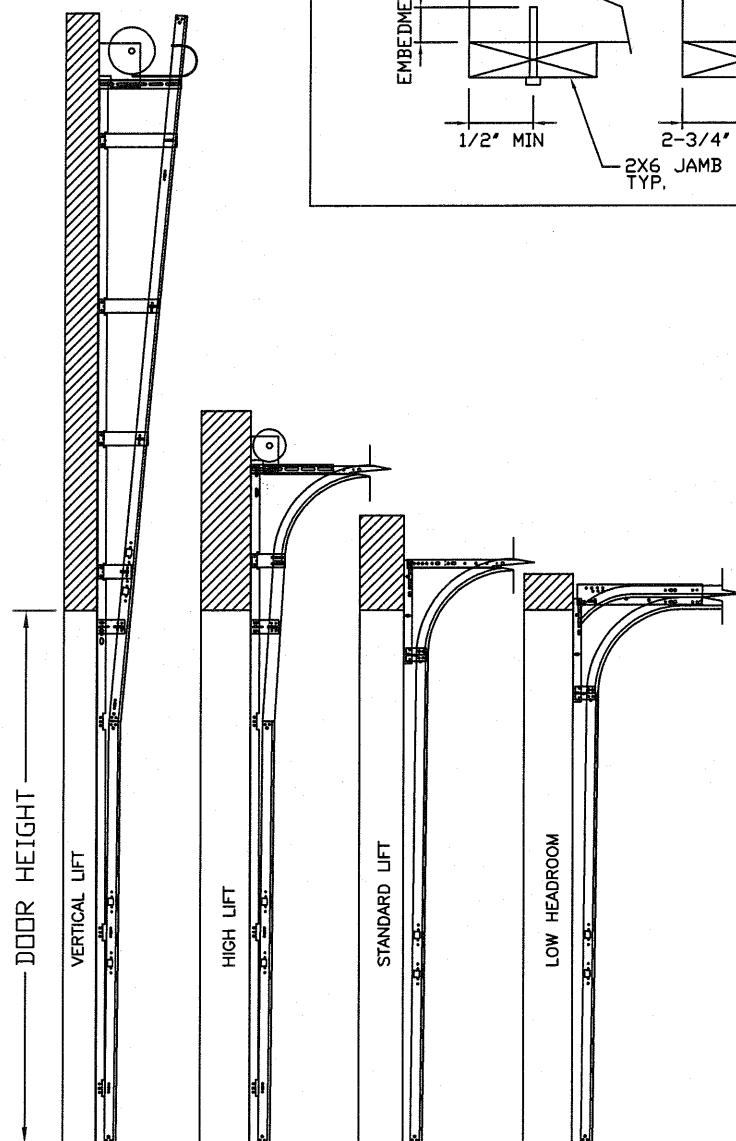
SHORT PANEL GLAZING FASTENER DETAIL
 N.T.S.

GLAZING OPTION CROSS SECTION

GLAZING NOT AVAILABLE IN WIND-BORNE DEBRIS REGION
 GLAZING MEETS ASTM E1300-04



SECTION B-B



AVAILABLE TRACK CONFIGURATIONS
 N.T.S.

REV	DESCRIPTION OF REVISIONS	DATE	BY

MAX SIZE
 16' WIDTH
 14' HEIGHT
 (DOOR HEIGHT SUBJECT TO WEIGHT LIMITATIONS)

DESIGN LOADS
 +27.4 PSF
 -30.5 PSF

TEST LOADS
 +41.1 PSF
 -45.8 PSF

Thomas L. Shelmerdine, PE (TX PE #85829)
 Structural Solutions, PA (TX Firm #F-004063)

TX

Amarr
ENTRE/MATIC
 165 CARRIAGE COURT WINSTON-SALEM, N.C. 27105

MODEL #650 OAK SUMMIT w/DuraSafe
 MODEL #600 STRATFORD w/DuraSafe
 MODEL #950 HERITAGE w/DuraSafe
 Short, Long, Flush & Oak Summit Panel's

SIZE	DRAWN BY	RLR	DATE	03/3/14	DRAWING NUMBER
B	CHECKED BY		DATE		IRC-6016-133-17

SHEET 2 OF 3

5921-G W. Friendly Ave., Greensboro, NC 27410

TABLE 4

Section	Panel Type	Center Stile Locations (Measured from Left Edge)						
		1st (in)	2st (in)	3rd (in)	4th (in)	5th (in)	6th (in)	7th (in)
10' 0"	Short	25.22	48.41	71.59	94.78			
10' 0"	Long	30.00	60.00	90.00				
10' 0"	Oak Summit	30.63	60.00	89.38				
12' 0"	Short	25.62	48.81	72.00	96.36	119.55		
12' 0"	Long	27.25	49.63	72.00	94.38	116.75		
12' 0"	Oak Summit	24.63	48.31	72.00	95.69	119.38		
12' 2"	Short	26.27	49.64	73.00	96.36	119.73		
12' 2"	Long	27.17	50.08	73.00	95.92	118.83		
12' 2"	Oak Summit	25.13	49.06	73.00	96.94	120.88		
12' 4"	Short	27.27	50.64	74.00	97.36	120.73		
12' 4"	Long	28.17	51.08	74.00	96.92	119.83		
12' 4"	Oak Summit	25.63	49.81	74.00	98.19	122.38		
12' 6"	Short	26.34	50.67	75.00	99.33	123.66		
12' 6"	Long	27.34	51.17	75.00	98.83	122.66		
12' 6"	Oak Summit	26.13	50.56	75.00	99.44	123.88		
12' 8"	Short	27.34	51.67	76.00	100.33	124.66		
12' 8"	Long	28.20	52.10	76.00	99.90	123.80		
12' 8"	Oak Summit	26.63	51.31	76.00	100.69	125.38		
12' 10"	Short	27.50	52.25	77.00	101.75	126.50		
12' 10"	Long	29.20	53.10	77.00	100.90	124.80		
12' 10"	Oak Summit	27.13	52.06	77.00	101.94	126.88		
13' 0"	Short	28.00	53.00	78.00	103.00	128.00		
13' 0"	Long	30.20	54.10	78.00	101.90	125.80		
13' 0"	Oak Summit	27.63	52.81	78.00	103.19	128.38		
13' 2"	Short	29.00	54.00	79.00	104.00	129.00		
13' 2"	Long	31.20	55.10	79.00	102.90	126.80		
13' 2"	Oak Summit	28.13	53.56	79.00	104.44	129.88		
13' 4"	Short	28.80	54.40	80.00	105.60	131.20		
13' 4"	Long	29.80	54.90	80.00	105.10	130.20		
13' 4"	Oak Summit	28.63	54.31	80.00	105.69	131.38		
13' 6"	Short	29.80	55.40	81.00	106.60	132.20		
13' 6"	Long	30.80	55.90	81.00	106.10	131.20		
13' 6"	Oak Summit	29.13	55.06	81.00	106.94	132.88		
13' 8"	Short	30.80	56.40	82.00	107.60	133.20		
13' 8"	Long	31.25	56.63	82.00	107.38	132.75		
13' 8"	Oak Summit	29.63	55.81	82.00	108.19	134.38		
13' 10"	Short	31.39	57.16	82.94	108.71	134.49		
13' 10"	Long	31.34	57.17	83.00	108.83	134.66		
13' 10"	Oak Summit	30.13	56.56	83.00	109.44	135.88		
14' 0"	Short	31.59	57.76	83.94	110.11	136.29		
14' 0"	Long	33.25	58.63	84.00	109.38	134.75		
14' 0"	Oak Summit	30.63	57.31	84.00	110.69	137.38		
14' 2"	Short	32.75	58.85	84.94	111.41	137.51		
14' 2"	Long	33.34	59.17	85.00	110.83	136.66		
14' 2"	Oak Summit	31.13	58.06	85.00	111.94	138.88		
14' 4"	Short	32.39	59.16	85.94	112.71	139.49		
14' 4"	Long	34.34	60.17	86.00	111.83	137.66		
14' 4"	Oak Summit	31.63	58.81	86.00	113.19	140.38		
14' 6"	Short	32.79	59.86	86.94	114.01	141.09		
14' 6"	Long	35.34	61.17	87.00	112.83	138.66		
14' 6"	Oak Summit	32.13	59.56	87.00	114.44	141.88		
14' 8"	Short	33.19	60.56	87.94	115.31	142.69		
14' 8"	Long	44.81	66.41	88.00	109.59	131.19		
14' 8"	Oak Summit	32.63	60.31	88.00	115.69	143.38		
14' 10"	Short	33.59	61.26	88.94	116.61	144.29		
14' 10"	Long	45.60	67.30	89.00	110.70	132.40		
14' 10"	Oak Summit	33.13	61.06	89.00	116.94	144.88		
15' 0"	Short	33.94	61.94	89.94	117.94	145.94		
15' 0"	Long	46.60	68.30	90.00	111.70	133.40		
15' 0"	Oak Summit	33.63	61.81	90.00	118.19	146.38		
15' 2"	Short	34.39	62.66	90.94	119.21	147.49		
15' 2"	Long	47.60	69.30	91.00	112.70	134.40		
15' 2"	Oak Summit	34.13	62.56	91.00	119.44	147.88		
15' 4"	Short	28.00	53.60	79.20	104.80	130.40	156.00	
15' 4"	Long	47.25	69.63	92.00	114.38	136.75		
15' 4"	Oak Summit	34.63	63.31	92.00	120.69	149.38		
15' 6"	Short	46.62	69.81	93.00	116.19	139.38		
15' 6"	Long	47.60	70.30	93.00	115.70	138.40		
15' 6"	Oak Summit	47.42	70.21	93.00	115.79	138.58		
15' 8"	Short	47.62	70.81	94.00	117.19	140.38		
15' 8"	Long	48.60	71.30	94.00	116.70	139.40		
15' 8"	Oak Summit	48.02	71.01	94.00	116.99	139.98		
15' 10"	Short	48.62	71.81	95.00	118.19	141.38		
15' 10"	Long	49.17	72.08	95.00	117.92	140.83		
15' 10"	Oak Summit	48.62	71.81	95.00	118.19	141.38		
16' 0"	Short	49.62	72.81	96.00	119.19	142.38		
16' 0"	Long	25.30	50.60	73.30	96.00	118.70	141.40	166.70
16' 0"	Oak Summit	48.42	72.21	96.00	119.79	143.58		

*SHADED STILES ARE NOT HINGED

TABLE 5

Section	Panel Type	Max Design Loads Allowed	
		Positive (PSF)	Negative (PSF)
10' 0"	Short	36.7	40.8
10' 0"	Long	21.9	24.4
10' 0"	Oak Summit	21.9	24.4
12' 0"	Short	28.0	31.1
12' 0"	Long	29.3	32.7
12' 0"	Oak Summit	27.7	30.9
12' 2"	Short	28.1	31.3
12' 2"	Long	28.6	31.9
12' 2"	Oak Summit	27.4	30.5
12' 4"	Short	28.1	31.3
12' 4"	Long	28.6	31.9
12' 4"	Oak Summit	27.1	30.2
12' 6"	Short	27.0	30.0
12' 6"	Long	27.5	30.7
12' 6"	Oak Summit	26.9	29.9
12' 8"	Short	27.0	30.0
12' 8"	Long	27.5	30.6
12' 8"	Oak Summit	26.6	29.6
12' 10"	Short	26.5	29.5
12' 10"	Long	27.5	30.6
12' 10"	Oak Summit	26.3	29.3
13' 0"	Short	26.3	29.2
13' 0"	Long	27.5	30.6
13' 0"	Oak Summit	26.1	29.0
13' 2"	Short	26.3	29.2
13' 2"	Long	27.5	30.6
13' 2"	Oak Summit	25.8	28.7
13' 4"	Short	25.6	28.5
13' 4"	Long	26.1	29.1
13' 4"	Oak Summit	25.6	28.4
13' 6"	Short	25.6	28.5
13' 6"	Long	26.1	29.1
13' 6"	Oak Summit	25.3	28.2
13' 8"	Short	25.6	28.5
13' 8"	Long	25.9	28.8
13' 8"	Oak Summit	25.1	27.9
13' 10"	Short	25.5	28.3
13' 10"	Long	25.4	28.3
13' 10"	Oak Summit	24.8	27.6
14' 0"	Short	25.1	27.9
14' 0"	Long	25.9	28.8
14' 0"	Oak Summit	24.6	27.4
14' 2"	Short	25.1	27.9
14' 2"	Long	25.4	28.3
14' 2"	Oak Summit	24.4	27.1
14' 4"	Short	24.5	27.3
14' 4"	Long	25.4	28.3
14' 4"	Oak Summit	24.1	26.9
14' 6"	Short	24.2	27.0
14' 6"	Long	25.4	28.3
14' 6"	Oak Summit	23.9	26.6
14' 8"	Short	24.0	26.7
14' 8"	Long	29.8	33.2
14' 8"	Oak Summit	23.7	26.4
14' 10"	Short	23.7	26.4
14' 10"	Long	29.5	32.8
14' 10"	Oak Summit	23.5	26.2
15' 0"	Short	23.4	26.1
15' 0"	Long	29.2	32.5
15' 0"	Oak Summit	23.3	25.9
15' 2"	Short	23.2	25.8
15' 2"	Long	28.9	32.1
15' 2"	Oak Summit	23.1	25.7
15' 4"	Short	28.5	31.8
15' 4"	Long	28.5	31.8
15' 4"	Oak Summit	22.9	25.5
15' 6"	Short	28.2	31.4
15' 6"	Long	28.2	31.4
15' 6"	Oak Summit	28.2	31.4
15' 8"	Short	27.9	31.1
15' 8"	Long	27.9	31.1
15' 8"	Oak Summit	27.9	31.1
15' 10"	Short	27.6	30.8
15' 10"	Long	27.6	30.8
15' 10"	Oak Summit	27.6	30.8
16' 0"	Short	27.4	30.5
16' 0"	Long	27.4	30.5
16' 0"	Oak Summit	27.4	30.5

TABLE 1

DOOR HEIGHT	STRUT SPACING (BASED ON RECOMMENDED SECTION CONFIGURATION)														TOP
	A	B	C	D	E	F	G	H	I	J	K	L	M	N	T
6' 6"	5 1/2"	18 1/4"	25 1/2"	36 1/4"	43 1/2"	54 1/4"									67 1/2"
7' 0"	5 1/2"	18 1/4"	25 1/2"	39 1/4"	46 1/2"	60 1/4"									73 1/2"
7' 6"	5 1/2"	15 1/4"	22 1/2"	33 1/4"	40 1/2"	51 1/4"	58 1/2"	69 1/4"							81"
8' 0"	5 1/2"	18 1/4"	25 1/2"	36 1/4"	43 1/2"	54 1/4"	61 1/2"	72 1/4"							85 1/2"
8' 6"	5 1/2"	18 1/4"	25 1/2"	39 1/4"	46 1/2"	60 1/4"	67 1/2"	78 1/4"							91 1/2"
9' 0"	5 1/2"	15 1/4"	22 1/2"	33 1/4"	40 1/2"	51 1/4"	58 1/2"	69 1/4"	76 1/2"	87 1/4"					99"
9' 6"	5 1/2"	18 1/4"	25 1/2"	36 1/4"	43 1/2"	54 1/4"	61 1/2"	72 1/4"	79 1/2"	90 1/4"					103 1/2"
10' 0"	5 1/2"	18 1/4"	25 1/2"	39 1/4"	46 1/2"	60 1/4"	67 1/2"	78 1/4"	85 1/2"	96 1/4"					109 1/2"
10' 6"	5 1/2"	18 1/4"	25 1/2"	39 1/4"	46 1/2"	60 1/4"	67 1/2"	81 1/4"	88 1/2"	102 1/4"					115 1/2"
11' 0"	5 1/2"	18 1/4"	25 1/2"	36 1/4"	43 1/2"	54 1/4"	61 1/2"	72 1/4"	79 1/2"	90 1/4"	97 1/2"	108 1/4"			121 1/2"
11' 6"	5 1/2"	18 1/4"	25 1/2"	39 1/4"	46 1/2"	60 1/4"	67 1/2"	78 1/4"	85 1/2"	96 1/4"	103 1/2"	114 1/4"			127 1/2"
12' 0"	5 1/2"	18 1/4"	25 1/2"	39 1/4"	46 1/2"	60 1/4"	67 1/2"	81 1/4"	88 1/2"	102 1/4"	109 1/2"	120 1/4"			133 1/2"
12' 6"	5 1/2"	18 1/4"	25 1/2"	36 1/4"	43 1/2"	54 1/4"	61 1/2"	72 1/4"	79 1/2"	90 1/4"	97 1/2"	108 1/4"	115 1/2"	126 1/4"	139 1/2"
13' 0"	5 1/2"	18 1/4"	25 1/2"	39 1/4"	46 1/2"	60 1/4"	67 1/2"	78 1/4"	85 1/2"	96 1/4"	103 1/2"	114 1/4"	121 1/2"	132 1/4"	145 1/2"
13' 6"	5 1/2"	18 1/4"	25 1/2"	39 1/4"	46 1/2"	60 1/4"	67 1/2"	81 1/4"	88 1/2"	102 1/4"	109 1/2"	120 1/4"	127 1/2"	138 1/4"	151 1/2"
14' 0															