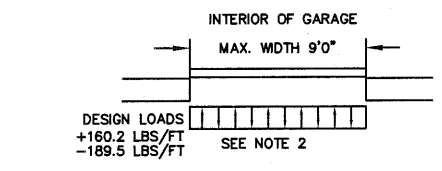


THE METHOD OF TESTING WAS IN SUBSTANTIAL CONFORMANCE WITH THE PROCEDURE DESCRIBED IN ASTM E330 AND DASMA 108. THE PRESSURES SHOWN ON THE DRAWINGS WERE CALCULATED USING ASCE 7-98/02/05 WITH THE FOLLOWING PARAMETERS (5 FEET OF DOOR WIDTH IN THE END ZONE, ROOF AT ANY SLOPE, AND I=1.0):

WIND SPEED (MPH)	150	136	129	124	119
EXPOSURE LEVEL	B	C	C	D	D
MEAN ROOF HEIGHT	30'	15'	25'	15'	25'



- SPECIFICATIONS AND NOTES**
- ALL THE LOAD FROM THE DOOR IS TRANSFERRED TO THE VERTICAL TRACK, FROM THE TRACK THE LOAD IS TRANSFERRED TO THE VERTICAL JAMBS. THE HORIZONTAL JAMB OR HEADER RECEIVES NO PORTION OF THE LOAD TRANSFERRED FROM THE DOOR.
 - EACH VERTICAL JAMBS RECEIVES MAXIMUM DESIGN LOADS OF: +160.2 LBS/FT & -189.5 LBS/FT
 - DOORS AND HARDWARE WILL BE DESIGNED, MANUFACTURED AND INSTALLED WITH STANDARDS AS SET FORTH BY DASMA.
 - DOOR SECTIONS SHALL BE 25 GA. MIN. (.019") ROLLED FORMED LIGHT COMMERCIAL QUALITY
 - SUPPORTING STRUCTURAL ELEMENTS SHALL BE DESIGNED BY A REGISTERED PROFESSIONAL ENGINEER FOR WIND LOADS INDICATED ON THIS DRAWING IN ADDITION TO OTHER LOADINGS.

REV	DESCRIPTION OF REVISIONS	DATE	BY
A	UPDATED BOTTOM BRACKET INFORMATION ADDED OAKSUMMIT AND GLAZING OPTIONS	08/15/05	DLJ
B	UPDATED NOTE 6	09/02/08	DLJ
C	REMOVED TABLE 4, NOTE 7.	05/19/09	CBT
D	WIND SPEED TABLE & TRACK CONFIGURATIONS	04/05/12	RLR
E	CHANGED STRUT CONFIGURATION	04/05/13	RLR

MAX SIZE
9' x 14'

DESIGN LOADS
+35.6 PSF
-42.1 PSF

TEST LOADS
+53.4 PSF
-63.2 PSF

Thomas L. Shelmerdine, PE (TX PE #85829)
Structural Solutions, PA (TX Firm #F-004063)

TX

dba Structural Solutions of North Carolina, Inc.
5921-C W. Friendly Ave., Greensboro, NC 27410

Amarr
GARAGE DOORS

165 CARRIAGE COURT WINSTON-SALEM, N.C. 27105

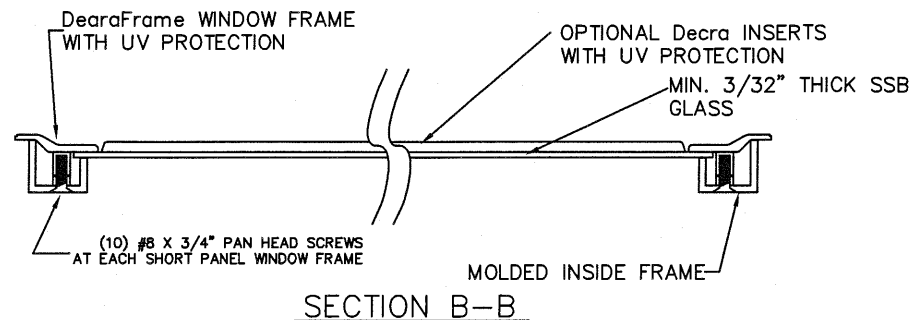
MODEL #650 OAK SUMMIT w/DuraSafe
MODEL #600 STRATFORD w/DuraSafe
MODEL #950 HERITAGE w/DuraSafe
Short, Long, Flush & Oak Summit Panel's

SIZE	DRAWN BY	DLJ	DATE	05/29/03	DRAWING NUMBER
B	CHECKED BY	AAE	DATE	05/29/03	IRC-6009-150-15

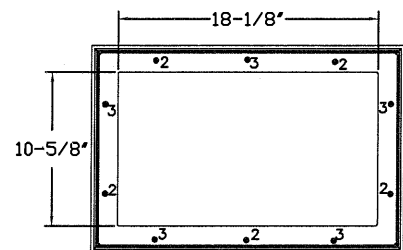
SHEET 1 OF 3

GLAZING OPTION CROSS SECTION

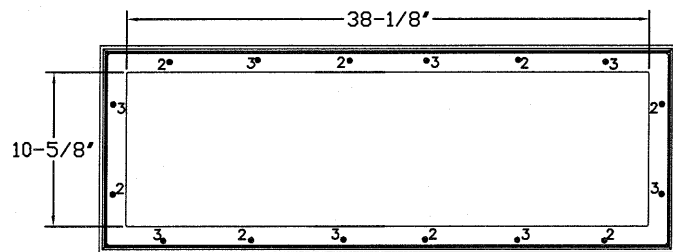
GLAZING NOT AVAILABLE IN WIND-BORNE DEBRIS REGION
GLAZING MEETS ASTM E1300-04



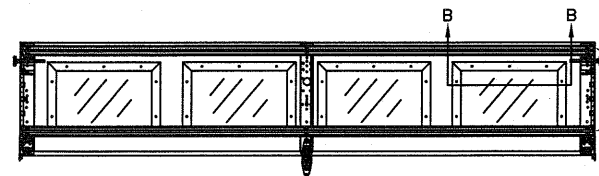
SECTION B-B



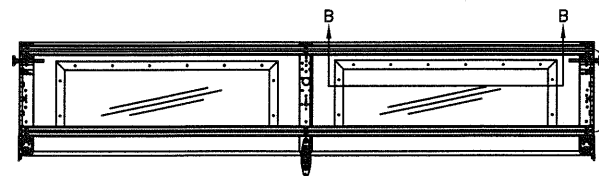
SHORT PANEL GLAZING FASTENER DETAIL
N.T.S.



LONG PANEL GLAZING FASTENER DETAIL
N.T.S.



OPTIONAL SHORT PANEL GLAZED SECTION STRUT AND STILE LAYOUT



OPTIONAL LONG PANEL GLAZED SECTION STRUT AND STILE LAYOUT

3" 20GA. STRUT LOCATED AT THE TOP AND BOTTOM OF GLAZED SECTION ATTACHED W/(2) 1/4" X 3/4" HEX HEAD SCREWS AT END AND CENTER STILES

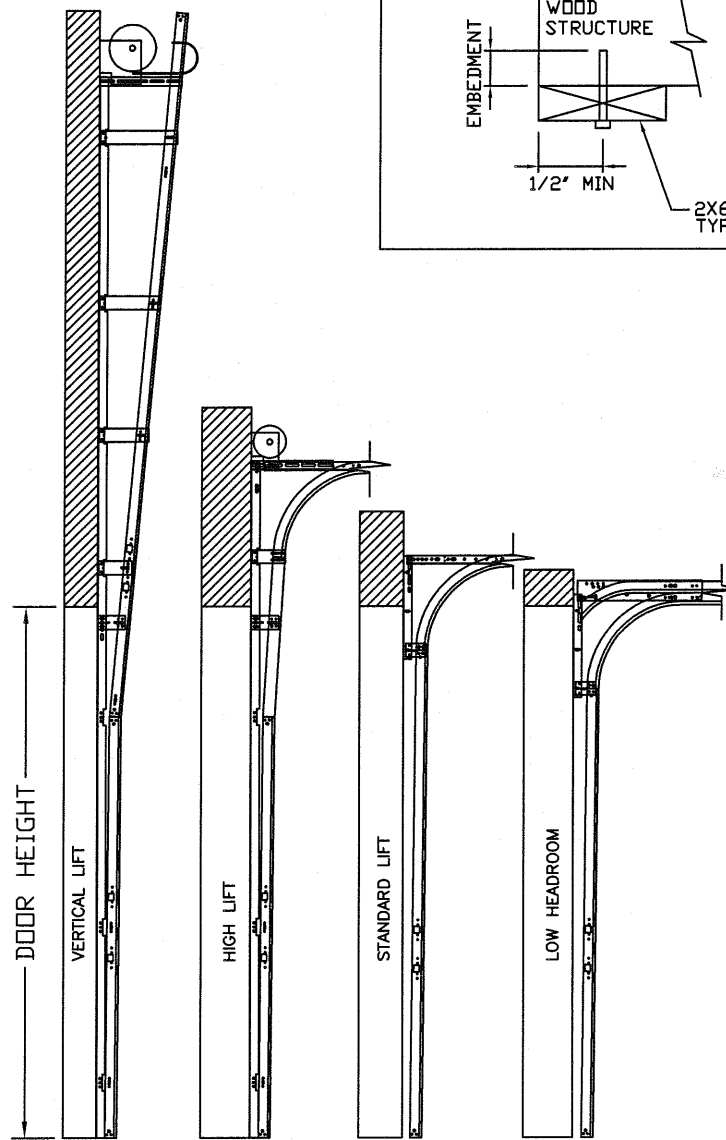
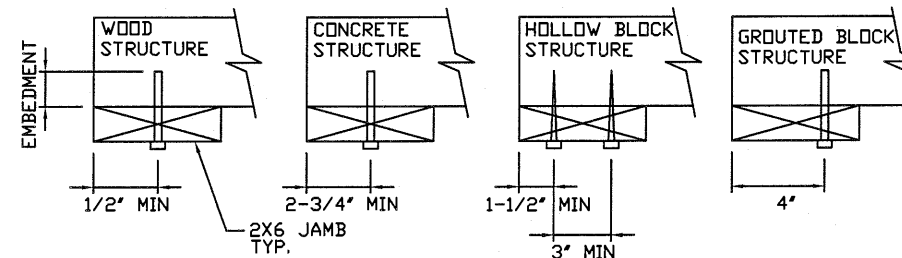
3" 20GA. STRUT LOCATED AT THE TOP AND BOTTOM OF GLAZED SECTION ATTACHED W/(2) 1/4" X 3/4" HEX HEAD SCREWS AT END AND CENTER STILES

WOOD JAMB ATTACHMENT TO STRUCTURE

2 X 6 VERTICAL JAMB ATTACHMENT TO WOOD FRAME STRUCTURE
 5/16" X 3" LAG SCREWS STARTING 6" FROM ENDS THEN 24" O.C. (1 1/2" EMBEDMENT)
2 X 6 VERTICAL JAMB ATTACHMENT TO 2,000 PSI CONCRETE
 HILTI KWIK BOLT 3/8" X 4" STARTING 6" FROM ENDS THEN 24" O.C. (2 1/2" EMBEDMENT)
 HILTI SLEEVE ANCHOR 3/8" X 2-3/4" STARTING 6" FROM ENDS THEN 24" O.C. (1 1/4" EMBEDMENT)
 ITW/RAMSET REDHEAD (TRU-BOLT) 3/8" X 4" STARTING 6" FROM ENDS THEN 24" O.C. (2 1/2" EMBEDMENT)
2 X 6 VERTICAL JAMB ATTACHMENT TO HOLLOW C-90 BLOCK
 SIMPSON 1/4" X 3" TITEN SCREWS STARTING 6" FROM ENDS, USE PAIRS OF FASTENERS (3" APART) AT 16" O.C. (1 1/2" EMBEDMENT)
 HILTI 1/4" X 2-3/4" KWIK-CON II+ SCREWS STARTING 6" FROM ENDS, USE PAIRS OF FASTENERS (3" APART) AT 16" O.C. (1 1/4" EMBEDMENT)

2 X 6 VERTICAL JAMB ATTACHMENT TO GROUTED C-90 BLOCK (2000 PSI GROUT)
 HILTI SLEEVE ANCHOR 3/8" X 2-3/4" STARTING 6" FROM ENDS THEN 24" O.C. (1 1/4" EMBEDMENT) (OR, USE FASTENERS FOR HOLLOW C-90 BLOCK)

*LAGS AND BOLTS CAN BE COUNTERSUNK TO PROVIDE A FLUSH MOUNTING SURFACE.
 *PREPARATION OF WOOD JAMBS BY OTHERS



AVAILABLE TRACK CONFIGURATIONS
N.T.S.

REV	DESCRIPTION OF REVISIONS	DATE	BY
A	UPDATED BOTTOM BRACKET INFORMATION ADDED OAKSUMMIT AND GLAZING OPTIONS	08/15/05	DLJ
B	UPDATED NOTE 6	09/02/08	DLJ
C	REMOVED TABLE 4, NOTE 7.	05/19/09	CBT
D	WIND SPEED TABLE & TRACK CONFIGURATIONS	04/05/12	RLR
E	CHANGED STRUT CONFIGURATION	04/05/13	RLR

MAX SIZE
9' x 14'
 DESIGN LOADS
+35.6 PSF
-42.1 PSF
 TEST LOADS
+53.4 PSF
-63.2 PSF

Thomas L. Shelmerdine, PE (TX PE #85829)
 Structural Solutions, PA (TX Firm #F-004063)

TX

dba Structural Solutions of North Carolina, Inc.
 5921-G W. Friendly Ave., Greensboro, NC 27410

Amarr
GARAGE DOORS

165 CARRIAGE COURT WINSTON-SALEM, N.C. 27105

MODEL #650 OAK SUMMIT w/DuraSafe
 MODEL #600 STRATFORD w/DuraSafe
 MODEL #950 HERITAGE w/DuraSafe
 Short, Long, Flush & Oak Summit Panel's

SIZE	DRAWN BY	DLJ	DATE	05/29/03	DRAWING NUMBER
B	CHECKED BY	AAE	DATE	05/29/03	IRC-6009-150-15

SHEET 2 OF 3

TABLE 1

DOOR HEIGHT	STRUT SPACING (BASED ON RECOMMENDED SECTION CONFIGURATION)															TOP
	A	B	C	D	E	F	G	H	I	J	K	L	M	N	O	
6' 6"	5 1/2"	18"	25 3/8"	36"	43 3/8"	54"	61 3/8"									76 1/4"
7'	5 1/2"	18"	25 3/8"	39"	46 3/8"	60"	67 3/8"									82 1/4"
7' 6"	5 1/2"	15"	22 3/8"	33"	40 3/8"	51"	58 3/8"	69"	76 3/8"							88 1/4"
8'	5 1/2"	18"	25 3/8"	36"	43 3/8"	54"	61 3/8"	72"	79 3/8"							94 1/4"
8' 6"	5 1/2"	18"	25 3/8"	39"	46 3/8"	60"	67 3/8"	78"	85 3/8"							100 1/4"
9'	5 1/2"	15"	22 3/8"	33"	40 3/8"	51"	58 3/8"	69"	76 3/8"	87"	94 3/8"					106 1/4"
9' 6"	5 1/2"	18"	25 3/8"	36"	43 3/8"	54"	61 3/8"	72"	79 3/8"	90"	97 3/8"					112 1/4"
10'	5 1/2"	18"	25 3/8"	39"	46 3/8"	60"	67 3/8"	78"	85 3/8"	96"	103 3/8"					118 1/4"
10' 6"	5 1/2"	18"	25 3/8"	39"	46 3/8"	60"	67 3/8"	81"	88 3/8"	102"	109 3/8"					124 1/4"
11'	5 1/2"	18"	25 3/8"	36"	43 3/8"	54"	61 3/8"	72"	79 3/8"	90"	97 3/8"	108"	115 3/8"			130 1/4"
11' 6"	5 1/2"	18"	25 3/8"	39"	46 3/8"	60"	67 3/8"	78"	85 3/8"	96"	103 3/8"	114"	121 3/8"			136 1/4"
12'	5 1/2"	18"	25 3/8"	39"	46 3/8"	60"	67 3/8"	81"	88 3/8"	102"	109 3/8"	120"	127 3/8"			142 1/4"
12' 6"	5 1/2"	18"	25 3/8"	36"	43 3/8"	54"	61 3/8"	72"	79 3/8"	90"	97 3/8"	108"	115 3/8"	126"	133 3/8"	148 1/4"
13'	5 1/2"	18"	25 3/8"	39"	46 3/8"	60"	67 3/8"	78"	85 3/8"	96"	103 3/8"	114"	121 3/8"	132"	139 3/8"	154 1/4"
13' 6"	5 1/2"	18"	25 3/8"	39"	46 3/8"	60"	67 3/8"	81"	88 3/8"	102"	109 3/8"	120"	127 3/8"	138"	145 3/8"	160 1/4"
14'	5 1/2"	18"	25 3/8"	39"	46 3/8"	60"	67 3/8"	81"	88 3/8"	102"	109 3/8"	123"	130 3/8"	144"	151 3/8"	166 1/4"

TABLE 2

DOOR HEIGHT	SECTION HEIGHTS							
	Btm	#2	#3	#4	#5	#6	#7	#8
14' 0"	21"	21"	21"	21"	21"	21"	21"	21"
13' 6"	21"	21"	21"	21"	21"	18"	18"	21"
13' 0"	21"	21"	21"	18"	18"	18"	18"	21"
12' 6"	21"	18"	18"	18"	18"	18"	18"	21"
12' 0"	21"	21"	21"	21"	21"	18"	21"	
11' 6"	21"	21"	21"	18"	18"	18"	21"	
11' 0"	21"	18"	18"	18"	18"	18"	21"	
10' 6"	21"	21"	21"	21"	21"	21"		
10' 0"	21"	21"	21"	18"	18"	21"		
9' 6"	21"	18"	18"	18"	18"	21"		
9' 0"	18"	18"	18"	18"	18"	18"		
8' 6"	21"	21"	21"	18"	21"			
8' 0"	21"	18"	18"	18"	21"			
7' 6"	18"	18"	18"	18"	18"			
7' 0"	21"	21"	21"	21"				
6' 6"	21"	18"	18"	21"				

TABLE 3

DOOR HEIGHT	TRACK ATTACHMENT								SPLICE
	A	B	C	D	E	F	G	H	
6' 6"	10"	21"	39"	57"					70"
7'	10"	21"	42"	63"					76"
7' 6"	10"	18"	36"	54"	72"				82"
8'	10"	21"	39"	57"	75"				88"
8' 6"	10"	21"	42"	63"	81"				94"
9'	10"	18"	36"	54"	72"	90"			100"
9' 6"	10"	21"	39"	57"	75"	93"			106"
10'	10"	21"	42"	63"	81"	99"			112"
10' 6"	10"	21"	42"	63"	84"	105"			118"
11'	10"	21"	39"	57"	75"	93"	111"		124"
11' 6"	10"	21"	42"	63"	81"	99"	117"		130"
12'	10"	21"	42"	63"	84"	105"	123"		136"
12' 6"	10"	21"	39"	57"	75"	93"	111"	129"	142"
13'	10"	21"	42"	63"	81"	99"	117"	135"	148"
13' 6"	10"	21"	42"	63"	84"	105"	123"	141"	154"
14'	10"	21"	42"	63"	84"	105"	126"	147"	160"

ALL TRACK ATTACHMENT SPACING +/-1.5" ALLOWED WITH SYP OR SPF NO. 2 OR BETTER ONLY

TABLE 4

Section	Panel Type	Center Stile Location (Measured from Left Edge)	Max Design Loads Allowed	
			Positive (PSF)	Negative (PSF)
8' 0"	Short, Oak Summit	48.000	39.8	47.1
8' 0"	Long	48.000	39.8	47.1
8' 2"	Short, Oak Summit	49.000	39.0	46.2
8' 2"	Long	49.000	39.0	46.2
8' 4"	Short, Oak Summit	50.000	38.3	45.2
8' 4"	Long	50.000	38.3	45.2
8' 6"	Short, Oak Summit	51.000	37.5	44.4
8' 6"	Long	51.000	37.5	44.4
8' 8"	Short, Oak Summit	52.000	36.8	43.5
8' 8"	Long	52.000	36.8	43.5
8' 10"	Short, Oak Summit	53.000	36.1	42.7
8' 10"	Long	53.000	36.1	42.7
9' 0"	Short, Oak Summit	54.000	35.6	42.1
9' 0"	Long	54.000	35.6	42.1

REV	DESCRIPTION OF REVISIONS	DATE	BY
A	UPDATED BOTTOM BRACKET INFORMATION ADDED OAKSUMMIT AND GLAZING OPTIONS	08/15/05	DLJ
B	UPDATED NOTE 6	09/02/08	DLJ
C	REMOVED TABLE 4, NOTE 7.	05/19/09	CBT
D	WIND SPEED TABLE & TRACK CONFIGURATIONS	04/05/12	RLR
E	CHANGED STRUT CONFIGURATION	04/05/13	RLR

MAX SIZE
9' x 14'

DESIGN LOADS
+35.6 PSF
-42.1 PSF

TEST LOADS
+53.4 PSF
-63.2 PSF

Thomas L. Shelmerdine, PE (TX PE #85829)
Structural Solutions, PA (TX Firm #F-004063)

TX

dba Structural Solutions of North Carolina, Inc.
5921-G W. Friendly Ave., Greensboro, NC 27410

Amarr
GARAGE DOORS

165 CARRIAGE COURT WINSTON-SALEM, N.C. 27105

MODEL #650 OAK SUMMIT w/DuraSafe
MODEL #600 STRATFORD w/DuraSafe
MODEL #950 HERITAGE w/DuraSafe
Short, Long, Flush & Oak Summit Panel's

SIZE	DRAWN BY	DLJ	DATE	05/29/03	DRAWING NUMBER
B	CHECKED BY	AAE	DATE	05/29/03	IRC-6009-150-15

SHEET 3 OF 3