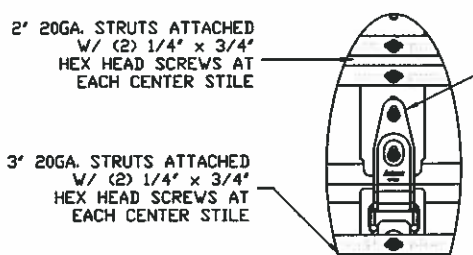
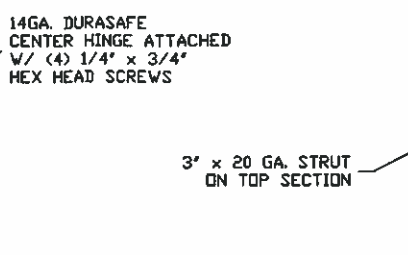


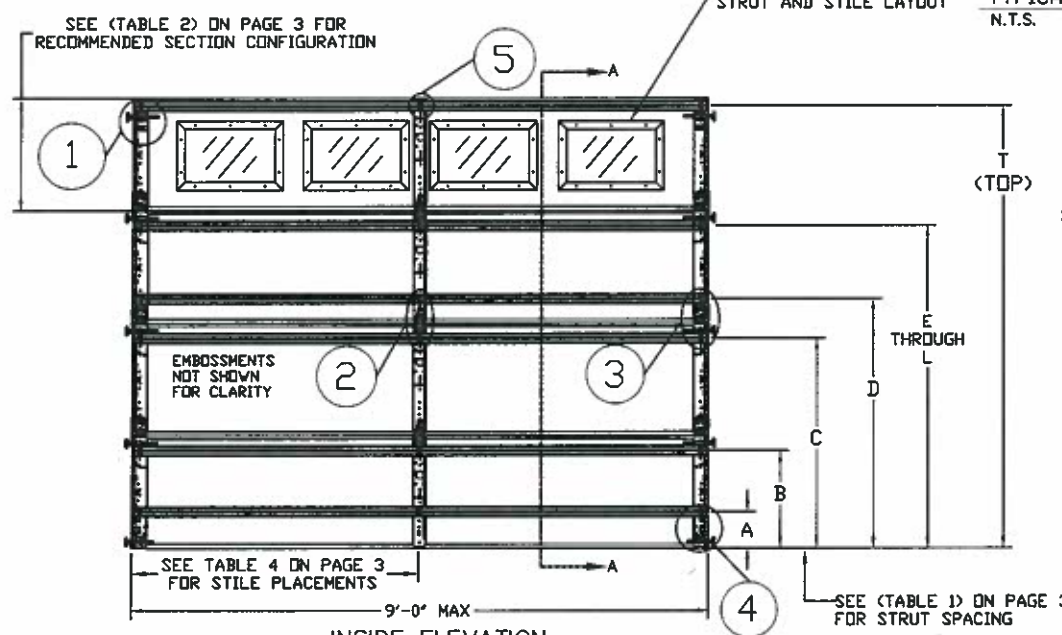
TYPICAL TOP FIXTURES
N.T.S.



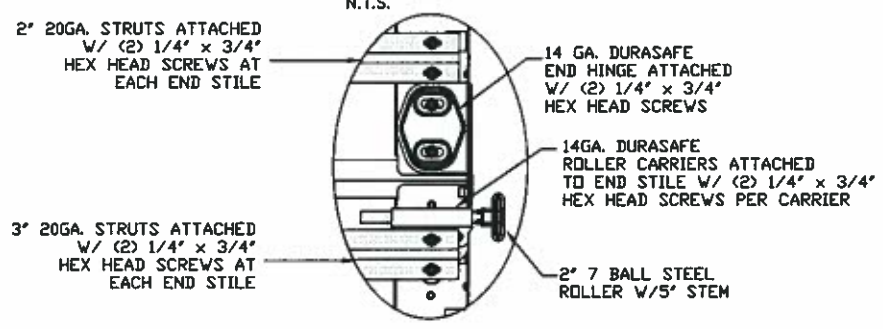
TYPICAL DURASAFE CENTER HINGE
N.T.S.



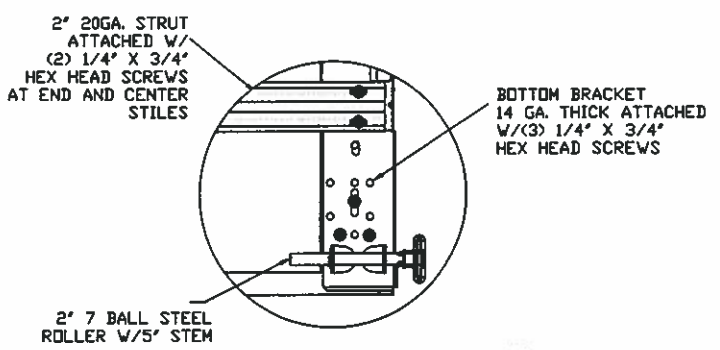
TYPICAL STILE STIFFENER
N.T.S.



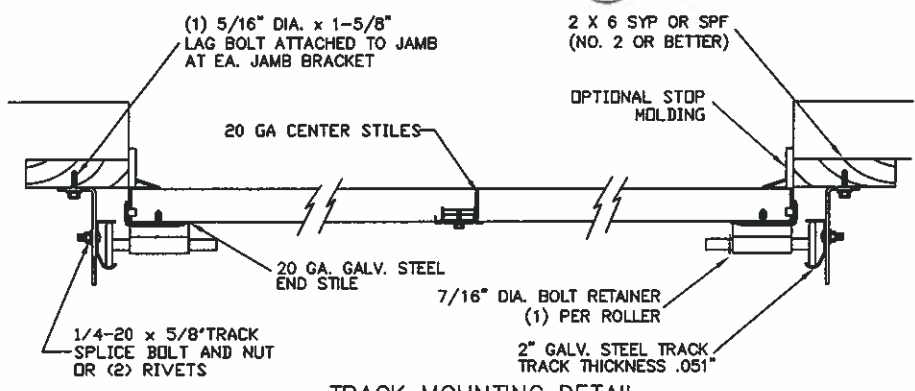
INSIDE ELEVATION
N.T.S.



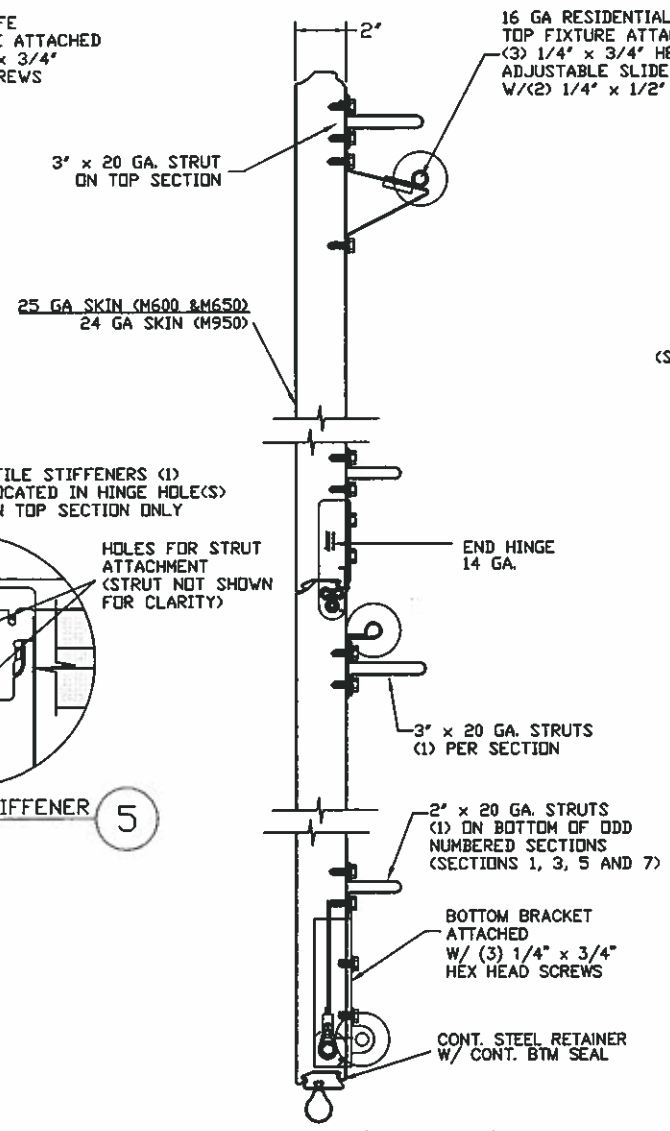
TYPICAL DURASAFE END HINGE
N.T.S.



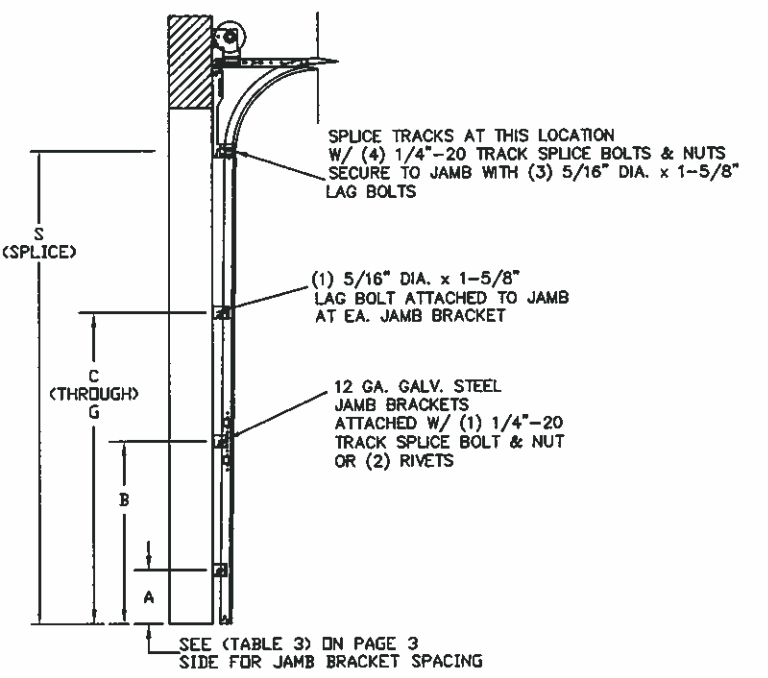
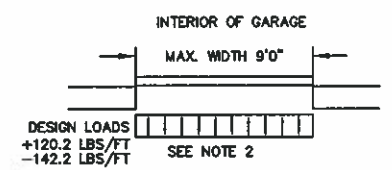
TYPICAL BOTTOM BRACKET
N.T.S.



TRACK MOUNTING DETAIL
N.T.S.



SECTION A-A (SIDE VIEW)
N.T.S.



TRACK CONFIGURATION FOR 6'6" UP TO 14' TALL DOORS
N.T.S.

REV	DESCRIPTION OF REVISIONS	DATE	BY
A	UPDATED BOTTOM BRACKET INFORMATION ADDED OAKSUMMIT AND GLAZING OPTIONS	08/10/05	DLJ
B	UPDATED NOTE 6	09/02/08	DLJ
C	REMOVED TABLE 4, NOTE 7.	05/19/09	CBT
D	WIND SPEED TABLE & TRACK CONFIGURATIONS	04/04/12	RLR
E	CHANGED STRUT CONFIGURATION	03/01/13	RLR

MAX SIZE
9' x 14'

DESIGN LOADS
+26.7 PSF
-31.6 PSF

TEST LOADS
+40.1 PSF
-47.4 PSF

Thomas L. Shelmerdine, PE (TX PE #85829)
Structural Solutions, PA (TX Firm #004063)

STATE OF TEXAS
THOMAS L. SHELME RDINE
85829
LICENSED PROFESSIONAL ENGINEER

TX

dba Structural Solutions of North Carolina, Inc.
5921 G.W. Friendly Ave., Greensboro, NC 27410



165 CARRIAGE COURT WINSTON-SALEM, NC. 27105

MODEL #650 OAK SUMMIT w/DuraSafe
MODEL #600 STRATFORD w/DuraSafe
MODEL #950 HERITAGE w/DuraSafe
Short, Long, Flush & Oak Summit Panel's

SIZE	DRAWN BY	DLJ	DATE	05/08/03	DRAWING NUMBER
B	CHECKED BY	AAE	DATE	05/08/03	IRC-6009-130-15

THE METHOD OF TESTING WAS IN SUBSTANTIAL CONFORMANCE WITH THE PROCEDURE DESCRIBED IN ASTM E330 AND DASMA 108. THE PRESSURES SHOWN ON THE DRAWINGS WERE CALCULATED USING ASCE 7-98/02/05 WITH THE FOLLOWING PARAMETERS (5 FEET OF DOOR WIDTH IN THE END ZONE, ROOF AT ANY SLOPE, AND I=1.0):

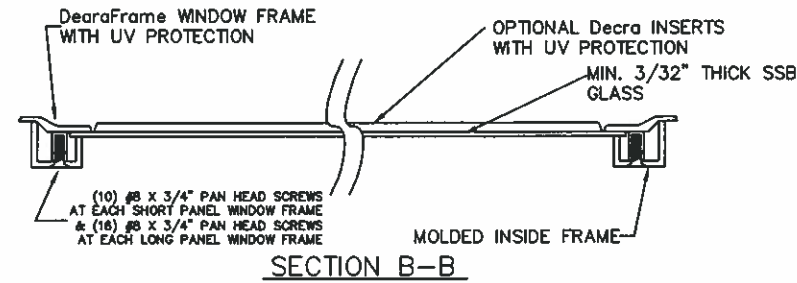
WIND SPEED (MPH)	130	118	112	107	103
EXPOSURE LEVEL	B	C	C	D	D
MEAN ROOF HEIGHT	30'	15'	25'	15'	25'

- SPECIFICATIONS AND NOTES**
- ALL THE LOAD FROM THE DOOR IS TRANSFERRED TO THE VERTICAL TRACK. FROM THE TRACK THE LOAD IS TRANSFERRED TO THE VERTICAL JAMBS. THE HORIZONTAL JAMB OR HEADER RECEIVES NO PORTION OF THE LOAD TRANSFERRED FROM THE DOOR.
 - EACH VERTICAL JAMB RECEIVES MAXIMUM DESIGN LOADS OF: +120.2 LBS/FT & -142.2 LBS/FT
 - DOORS AND HARDWARE WILL BE DESIGNED, MANUFACTURED AND INSTALLED WITH STANDARDS AS SET FORTH BY DASMA.
 - DOOR SECTIONS SHALL BE 25 GA. MIN. (.019") ROLLED FORMED LIGHT COMMERCIAL QUALITY
 - SUPPORTING STRUCTURAL ELEMENTS SHALL BE DESIGNED BY A REGISTERED PROFESSIONAL ENGINEER FOR WIND LOADS INDICATED ON THIS DRAWING IN ADDITION TO OTHER LOADINGS.

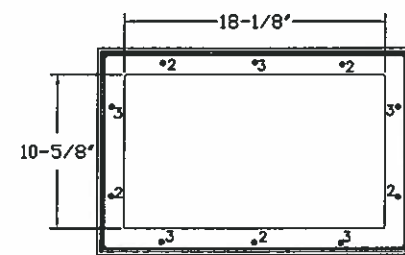
WOOD JAMB ATTACHMENT TO STRUCTURE

GLAZING OPTION CROSS SECTION

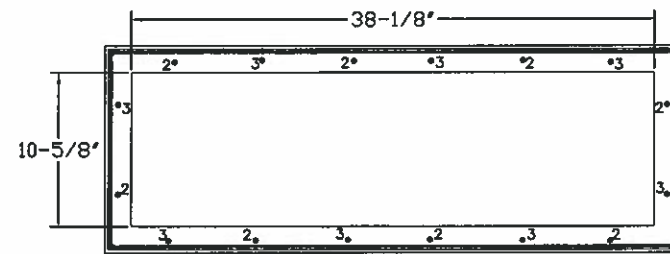
GLAZING NOT AVAILABLE IN WIND-BORNE DEBRIS REGION
GLAZING MEETS ASTM E1300-04



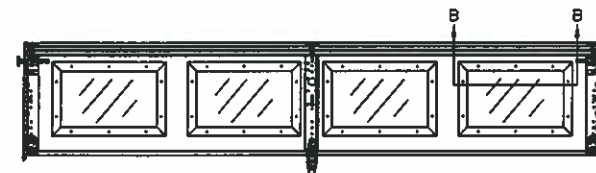
SECTION B-B



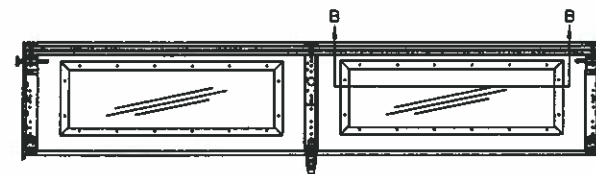
SHORT PANEL GLAZING FASTENER DETAIL
N.T.S.



LONG PANEL GLAZING FASTENER DETAIL
N.T.S.



OPTIONAL SHORT PANEL GLAZED SECTION STRUT AND STILE LAYOUT



OPTIONAL LONG PANEL GLAZED SECTION STRUT AND STILE LAYOUT

3\"/>

3\"/>

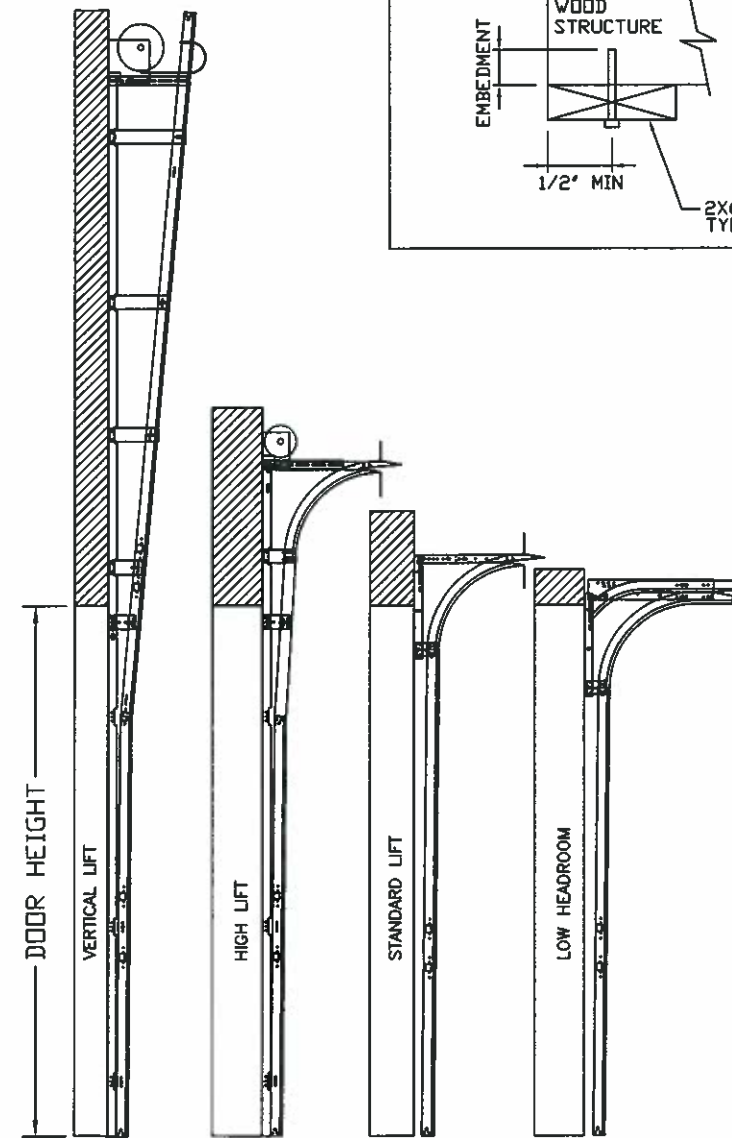
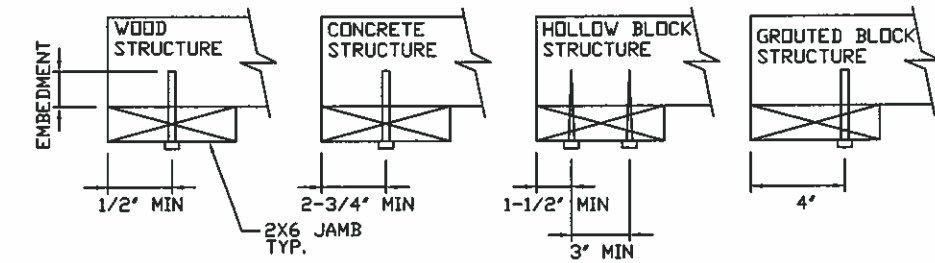
2 X 6 VERTICAL JAMB ATTACHMENT TO WOOD FRAME STRUCTURE
5/16\"/>

2 X 6 VERTICAL JAMB ATTACHMENT TO 2,000 PSI CONCRETE
HILTI KWIK BOLT 3/8\"/>

2 X 6 VERTICAL JAMB ATTACHMENT TO HOLLOW C-90 BLOCK
SIMPSON 1/4\"/>

2 X 6 VERTICAL JAMB ATTACHMENT TO GROUTED C-90 BLOCK (2000 PSI GROUT)
HILTI SLEEVE ANCHOR 3/8\"/>

*LAGS AND BOLTS CAN BE COUNTERSUNK TO PROVIDE A FLUSH MOUNTING SURFACE.
*PREPARATION OF WOOD JAMBS BY OTHERS

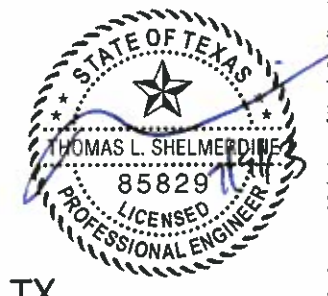


AVAILABLE TRACK CONFIGURATIONS
N.T.S.

REV	DESCRIPTION OF REVISIONS	DATE	BY
A	UPDATED BOTTOM BRACKET INFORMATION ADDED OAKSUMMIT AND GLAZING OPTIONS	08/10/05	DLJ
B	UPDATED NOTE 6	09/02/08	DLJ
C	REMOVED TABLE 4, NOTE 7.	05/19/08	CBT
D	WIND SPEED TABLE & TRACK CONFIGURATIONS	04/04/12	RLR
E	CHANGED STRUT CONFIGURATION	03/01/13	RLR

MAX SIZE
9' x 14'
DESIGN LOADS
+26.7 PSF
-31.6 PSF
TEST LOADS
+40.1 PSF
-47.4 PSF

Thomas L. Shelmerdine, PE (TX PE #85829)
Structural Solutions, PA (TX Firm #F-004065)



dba Structural Solutions of North Carolina, Inc.
5921-G W. Friendly Ave., Greensboro, NC 27410

Amarr
GARAGE DOORS

165 CARRIAGE COURT WINSTON-SALEM, NC 27105

MODEL #650 OAK SUMMIT w/DuraSafe
MODEL #600 STRATFORD w/DuraSafe
MODEL #950 HERITAGE w/DuraSafe
Short, Long, Flush & Oak Summit Panel's

SIZE	DRAWN BY	DLJ	DATE	05/08/03	DRAWING NUMBER
B	CHECKED BY	AAE	DATE	05/08/03	IRC-6009-130-15

SHEET 2 OF 3

TABLE 1

DOOR HEIGHT	STRUT SPACING (BASED ON RECOMMENDED SECTION CONFIGURATION)											TOP
	A	B	C	D	E	F	G	H	I	J	K	
6' 6"	6 3/4"	18 1/4"	36 1/4"	43 1/2"	54 1/4"							76 1/2"
7'	6 3/4"	18 1/4"	39 1/4"	46 1/2"	60 1/4"							82 1/2"
7' 6"	6 3/4"	15 1/4"	33 1/4"	40 1/2"	51 1/4"	69 1/4"	76 1/2"					88 1/2"
8'	6 3/4"	18 1/4"	36 1/4"	43 1/2"	54 1/4"	72 1/4"	79 1/2"					94 1/2"
8' 6"	6 3/4"	18 1/4"	39 1/4"	46 1/2"	60 1/4"	78 1/4"	85 1/2"					100 1/2"
9'	6 3/4"	15 1/4"	33 1/4"	40 1/2"	51 1/4"	69 1/4"	76 1/2"	87 1/4"				106 1/2"
9' 6"	6 3/4"	18 1/4"	36 1/4"	43 1/2"	54 1/4"	72 1/4"	79 1/2"	90 1/4"				112 1/2"
10'	6 3/4"	18 1/4"	39 1/4"	46 1/2"	60 1/4"	78 1/4"	85 1/2"	96 1/4"				118 1/2"
10' 6"	6 3/4"	18 1/4"	39 1/4"	46 1/2"	60 1/4"	81 1/4"	88 1/2"	102 1/4"				124 1/2"
11'	6 3/4"	18 1/4"	36 1/4"	43 1/2"	54 1/4"	72 1/4"	79 1/2"	90 1/4"	108 1/4"	115 1/2"		130 1/2"
11' 6"	6 3/4"	18 1/4"	39 1/4"	46 1/2"	60 1/4"	78 1/4"	85 1/2"	96 1/4"	114 1/4"	121 1/2"		136 1/2"
12'	6 3/4"	18 1/4"	39 1/4"	46 1/2"	60 1/4"	81 1/4"	88 1/2"	102 1/4"	120 1/4"	127 1/2"		142 1/2"
12' 6"	6 3/4"	18 1/4"	36 1/4"	43 1/2"	54 1/4"	72 1/4"	79 1/2"	90 1/4"	108 1/4"	115 1/2"	126 1/4"	148 1/2"
13'	6 3/4"	18 1/4"	39 1/4"	46 1/2"	60 1/4"	72 1/4"	79 1/2"	90 1/4"	108 1/4"	115 1/2"	126 1/4"	154 1/2"
13' 6"	6 3/4"	18 1/4"	39 1/4"	46 1/2"	60 1/4"	81 1/4"	88 1/2"	102 1/4"	120 1/4"	127 1/2"	138 1/4"	160 1/2"
14'	6 3/4"	18 1/4"	39 1/4"	46 1/2"	60 1/4"	81 1/4"	88 1/2"	102 1/4"	123 1/4"	130 1/2"	144 1/4"	166 1/2"

TABLE 2

DOOR HEIGHT	SECTION HEIGHTS							
	Btm	#2	#3	#4	#5	#6	#7	#8
14' 0"	21"	21"	21"	21"	21"	21"	21"	21"
13' 6"	21"	21"	21"	21"	21"	18"	18"	21"
13' 0"	21"	21"	21"	18"	18"	18"	18"	21"
12' 6"	21"	18"	18"	18"	18"	18"	18"	21"
12' 0"	21"	21"	21"	21"	21"	18"	21"	
11' 6"	21"	21"	21"	18"	18"	18"	21"	
11' 0"	21"	18"	18"	18"	18"	18"	21"	
10' 6"	21"	21"	21"	21"	21"	21"		
10' 0"	21"	21"	21"	18"	18"	21"		
9' 6"	21"	18"	18"	18"	18"	21"		
9' 0"	18"	18"	18"	18"	18"	18"		
8' 6"	21"	21"	21"	18"	21"			
8' 0"	21"	18"	18"	18"	21"			
7' 6"	18"	18"	18"	18"	18"			
7' 0"	21"	21"	21"	21"				
6' 6"	21"	18"	18"	21"				

TABLE 3

DOOR HEIGHT	TRACK ATTACHMENT							SPLICE
	A	B	C	D	E	F	G	
6' 6"	10"	38"	58"					70"
7'	10"	38"	58"					76"
7' 6"	4"	28"	52"	76"				82"
8'	10"	34"	58"	82"				88"
8' 6"	4"	28"	52"	76"				94"
9'	10"	34"	58"	82"				100"
9' 6"	4"	28"	52"	76"	100"			106"
10'	10"	34"	58"	82"	106"			112"
10' 6"	4"	28"	52"	76"	100"			118"
11'	10"	34"	58"	82"	106"			124"
11' 6"	4"	28"	52"	76"	100"	124"		130"
12'	10"	34"	58"	82"	106"	130"		136"
12' 6"	4"	28"	52"	76"	100"	124"		142"
13'	10"	34"	58"	82"	106"	130"		148"
13' 6"	4"	28"	52"	76"	100"	124"	148"	154"
14'	10"	34"	58"	82"	106"	130"	154"	160"

ALL TRACK ATTACHMENT SPACING +/-2" ALLOWED WITH SYP OR SPF NO. 2 OR BETTER ONLY

TABLE 4

Section Width (ft)	Panel Type	Center Stile Location (Measured from Left Edge)	Max Design Loads Allowed	
			Positive (PSF)	Negative (PSF)
8' 0"	Short, Oak Summit	48.000	29.9	35.4
8' 0"	Long	48.000	29.9	35.4
8' 2"	Short, Oak Summit	49.000	29.3	34.7
8' 2"	Long	49.000	29.3	34.7
8' 4"	Short, Oak Summit	50.000	28.7	34.0
8' 4"	Long	50.000	28.7	34.0
8' 6"	Short, Oak Summit	51.000	28.1	33.3
8' 6"	Long	51.000	28.1	33.3
8' 8"	Short, Oak Summit	52.000	27.6	32.7
8' 8"	Long	52.000	27.6	32.7
8' 10"	Short, Oak Summit	53.000	27.1	32.0
8' 10"	Long	53.000	27.1	32.0
9' 0"	Short, Oak Summit	54.000	26.7	31.6
9' 0"	Long	54.000	26.7	31.6

REV	DESCRIPTION OF REVISIONS	DATE	BY
A	UPDATED BOTTOM BRACKET INFORMATION ADDED OAKSUMMIT AND GLAZING OPTIONS	08/10/05	DLJ
B	UPDATED NOTE 6	09/02/08	DLJ
C	REMOVED TABLE 4, NOTE 7.	05/19/09	CBT
D	WIND SPEED TABLE & TRACK CONFIGURATIONS	04/04/12	RLR
E	CHANGED STRUT CONFIGURATION	03/01/13	RLR

MAX SIZE
9' x 14'

DESIGN LOADS
+26.7 PSF
-31.6 PSF

TEST LOADS
+40.1 PSF
-47.4 PSF

Thomas L. Shelmerdine, PE (TX PE #85829)
Structural Solutions, PA (TX Firm #004063)

TX

Thomas L. Shelmerdine, PE (TX PE #85829)
Structural Solutions, PA (TX Firm #004063)
dba Structural Solutions of North Carolina, Inc.
5921-G W. Friendly Ave., Greensboro, NC 27410

Amarr
GARAGE DOORS

165 CARRIAGE COURT WINSTON-SALEM, NC. 27105

MODEL #650 OAK SUMMIT w/DuraSafe
MODEL #600 STRATFORD w/DuraSafe
MODEL #950 HERITAGE w/DuraSafe
Short, Long, Flush & Oak Summit Panel's

SIZE	DRAWN BY	DLJ	DATE	05/08/03	DRAWING NUMBER
B	CHECKED BY	AAE	DATE	05/08/03	IRC-6009-130-15

SHEET 3 OF 3