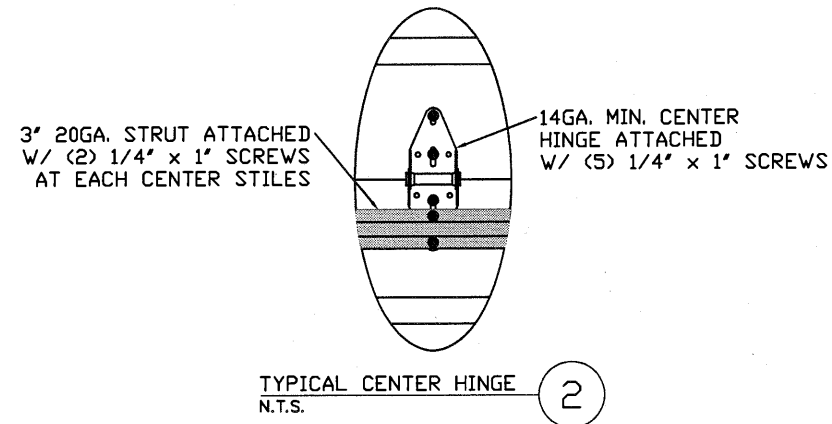
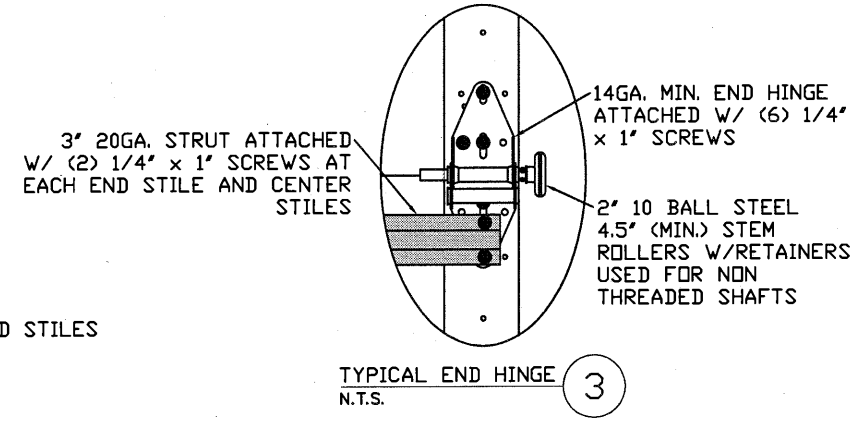


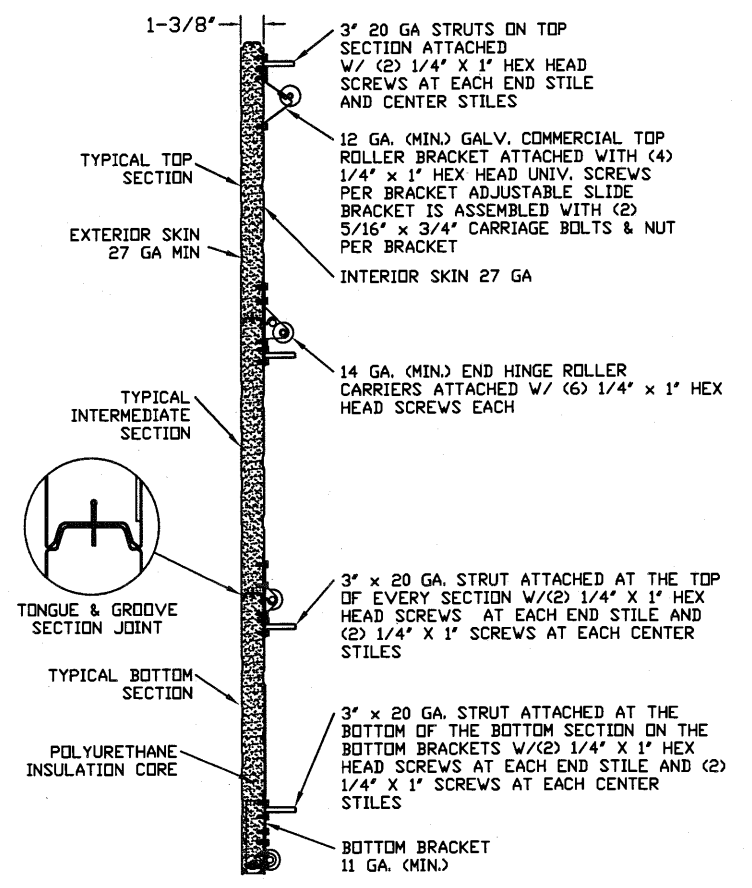
TYPICAL TOP FIXTURES
N.T.S. 1



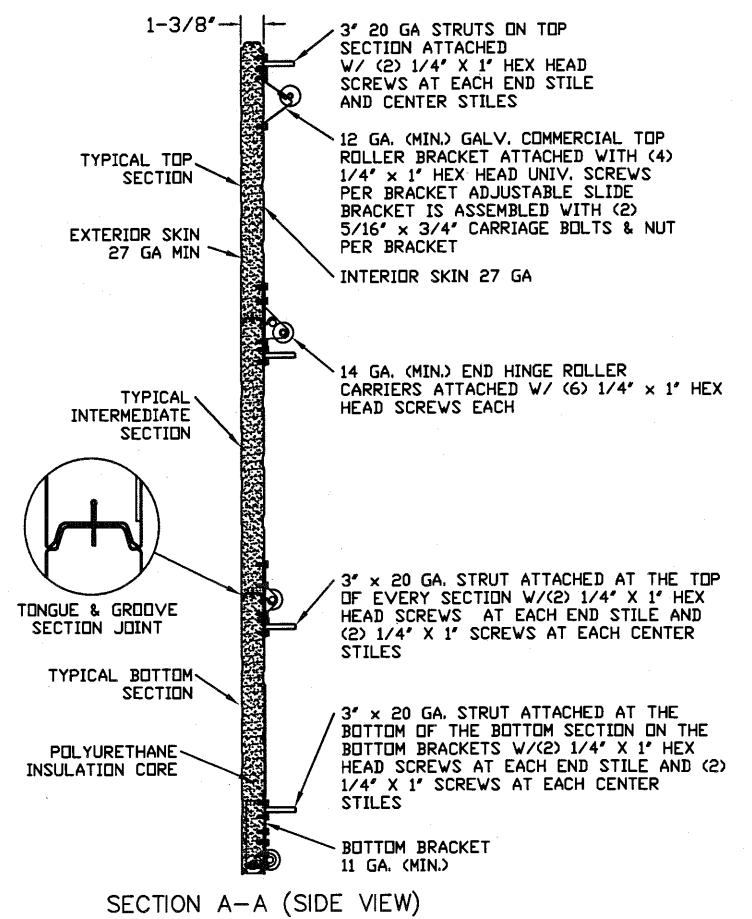
TYPICAL CENTER HINGE
N.T.S. 2



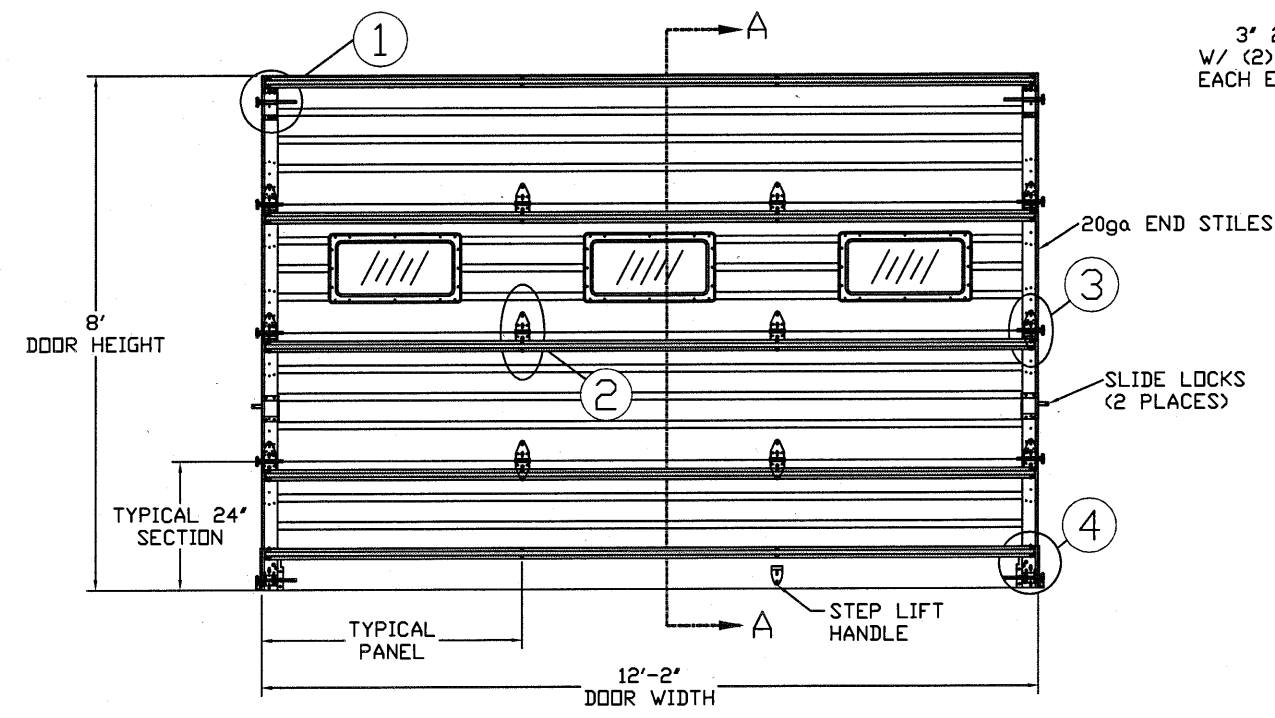
TYPICAL END HINGE
N.T.S. 3



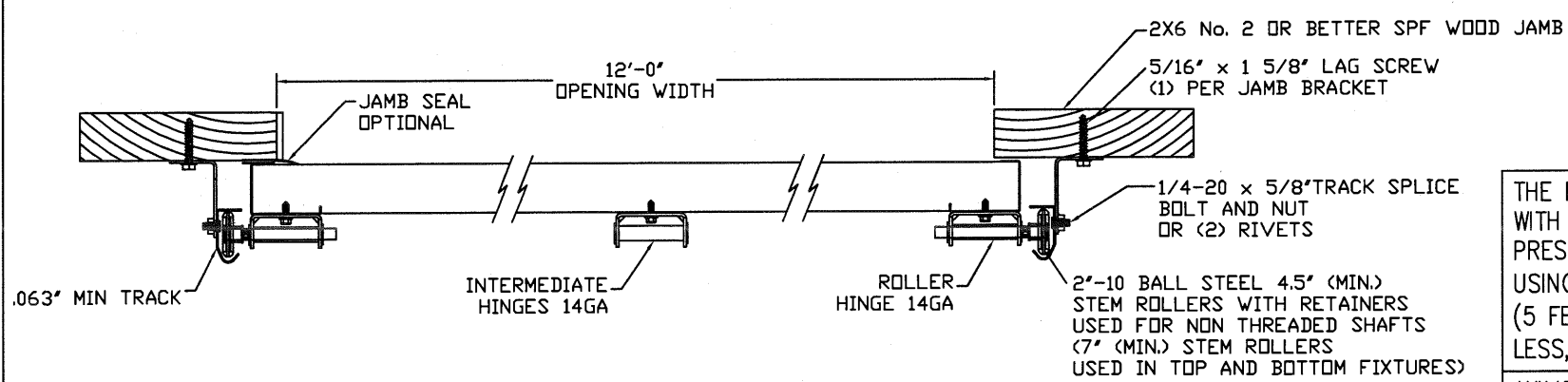
TYPICAL BOTTOM BRACKET
N.T.S. 4



SECTION A-A (SIDE VIEW)



DOOR INTERIOR ELEVATION
N.T.S.



2\"/>

THE METHOD OF TESTING WAS IN SUBSTANTIAL CONFORMANCE WITH THE PROCEDURES DESCRIBED IN DASMA 108. THE PRESSURES SHOWN ON THE DRAWINGS WERE CALCULATED USING ASCE 7-98/02/05 WITH THE FOLLOWING PARAMETERS (5 FEET OF DOOR WIDTH IN END ZONE, ROOF SLOPE 10° OR LESS, AND I=1.0):

WIND SPEED (MPH)	133	121	115	110	105
EXPOSURE LEVEL	B	C	C	D	D
MEAN ROOF HEIGHT	30'	15'	25'	15'	25'

REV	DESCRIPTION OF REVISIONS	DATE	BY

MAX SIZE 12'2 x 24'

DESIGN LOADS
+25.0 PSF
-28.7 PSF

TEST LOADS
+37.5 PSF
-43.1 PSF

Thomas L. Shelmerdine, PE (TX PE #85829)
Structural Solutions, PA (TX Firm #F-004063)

STATE OF TEXAS
THOMAS L. SHELMERDINE
85829
LICENSED PROFESSIONAL ENGINEER
TX

5921-G W. Friendly Ave., Greensboro, NC 27410

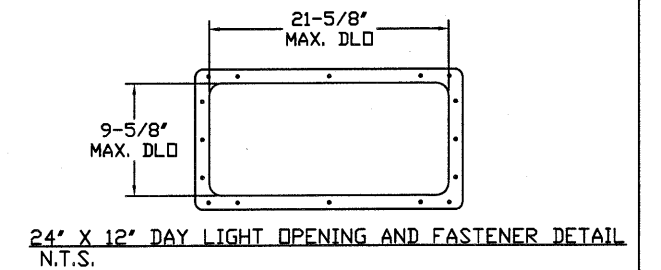
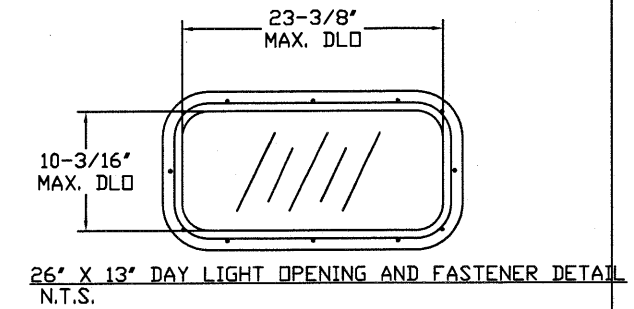
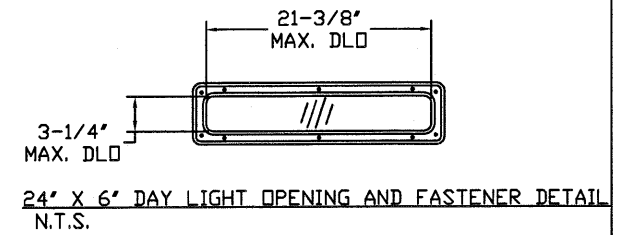
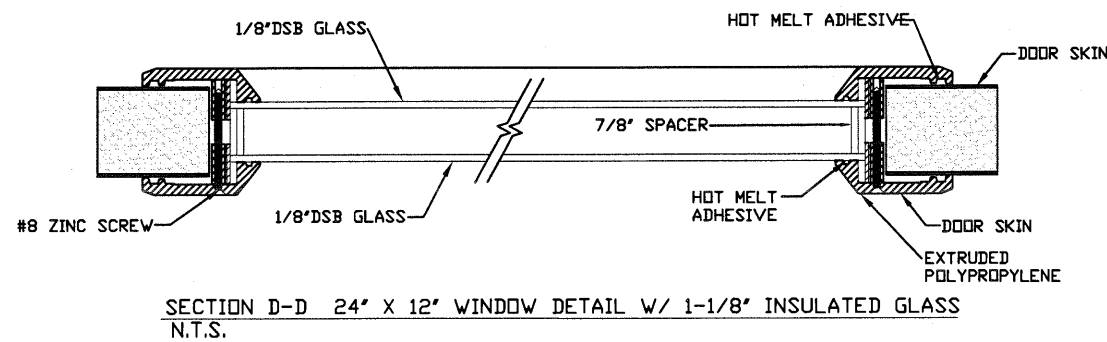
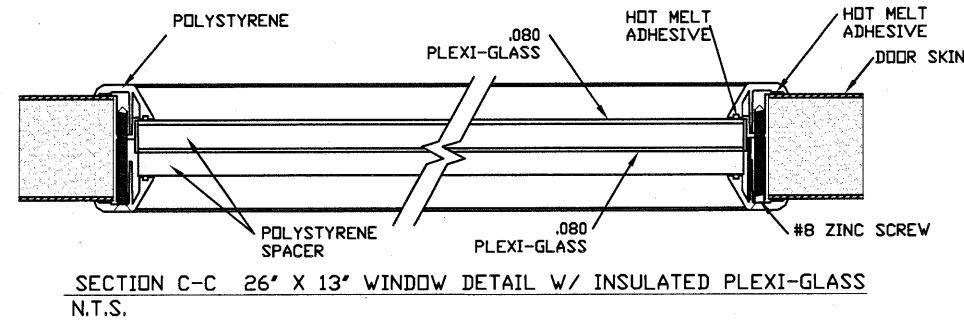
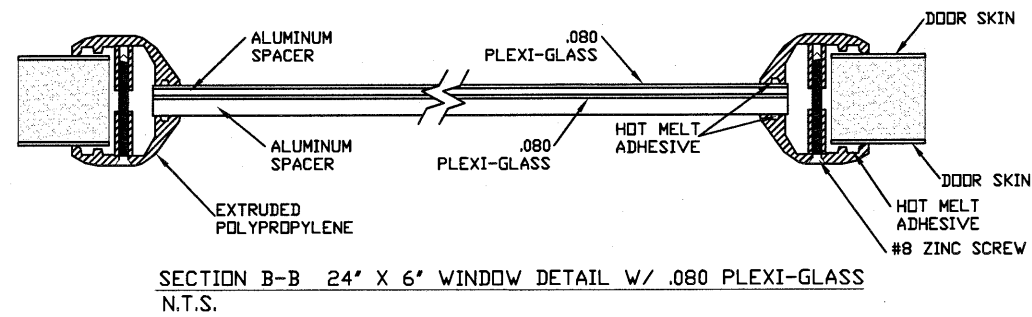
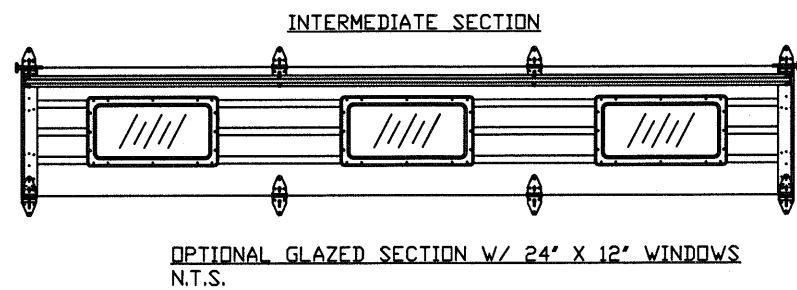
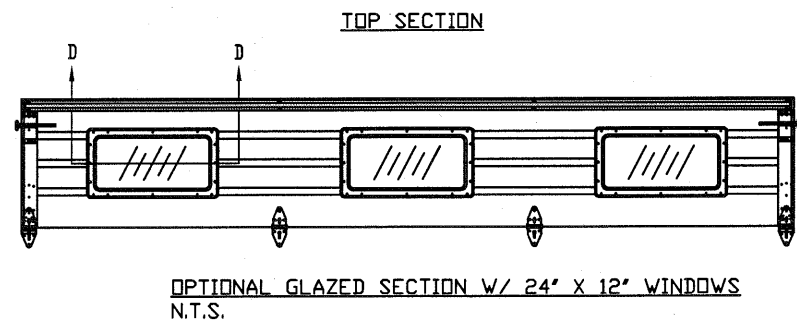
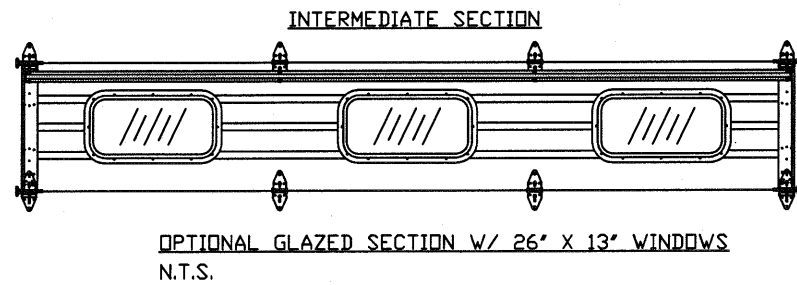
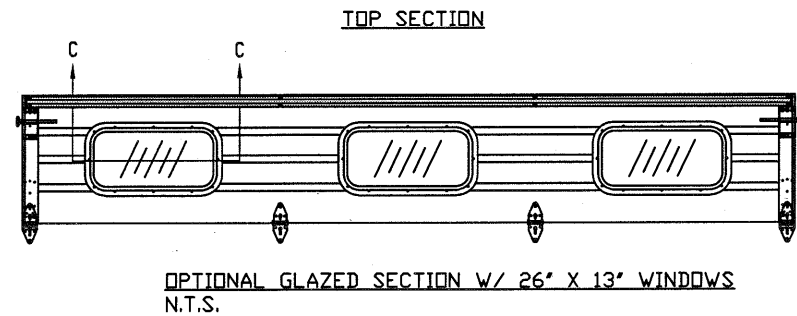
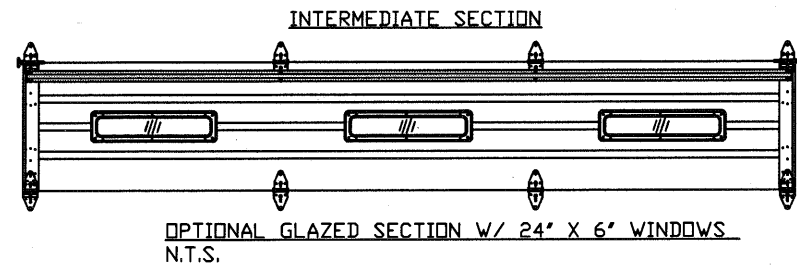
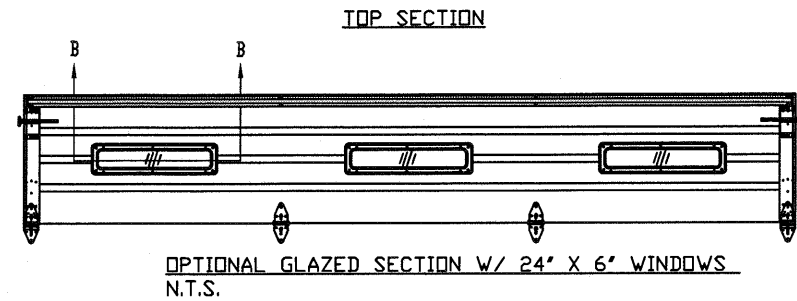
Amarr
ENTREMATIC

MODEL 1350 AMARR 2741 (27GA)
MODEL 2700 AMARR 2742 (27GA)
MODEL 2720 AMARR 2042 (20GA)

SIZE	DRAWN BY DRD	DATE 4/13/18	DRAWING NUMBER
B	CHECKED BY RLR	DATE 5/17/18	IBC-1312-133-15

ENTREMATIC
165 CARRIAGE COURT WINSTON-SALEM, NC. 27105

SHEET 1 OF 4



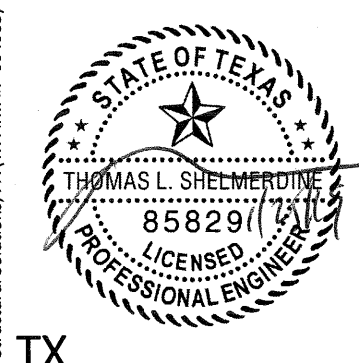
REV	DESCRIPTION OF REVISIONS	DATE	BY

MAX SIZE
16'2 x 24'

DESIGN LOADS
+25.0 PSF
-28.7 PSF

TEST LOADS
+37.5 PSF
-43.1 PSF

Thomas L. Shelmerdine, PE (TX PE #85829)
Structural Solutions, PA (TX Firm #F-004063)



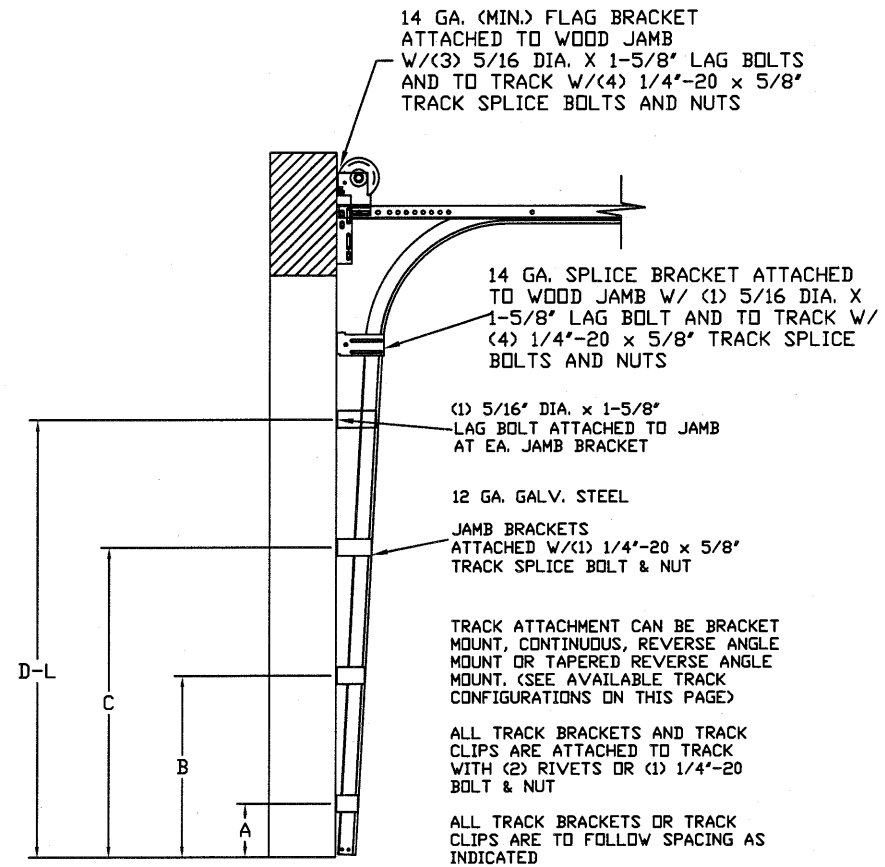
5921-G W. Friendly Ave., Greensboro, NC 27410

Amarr
ENTREMATIC

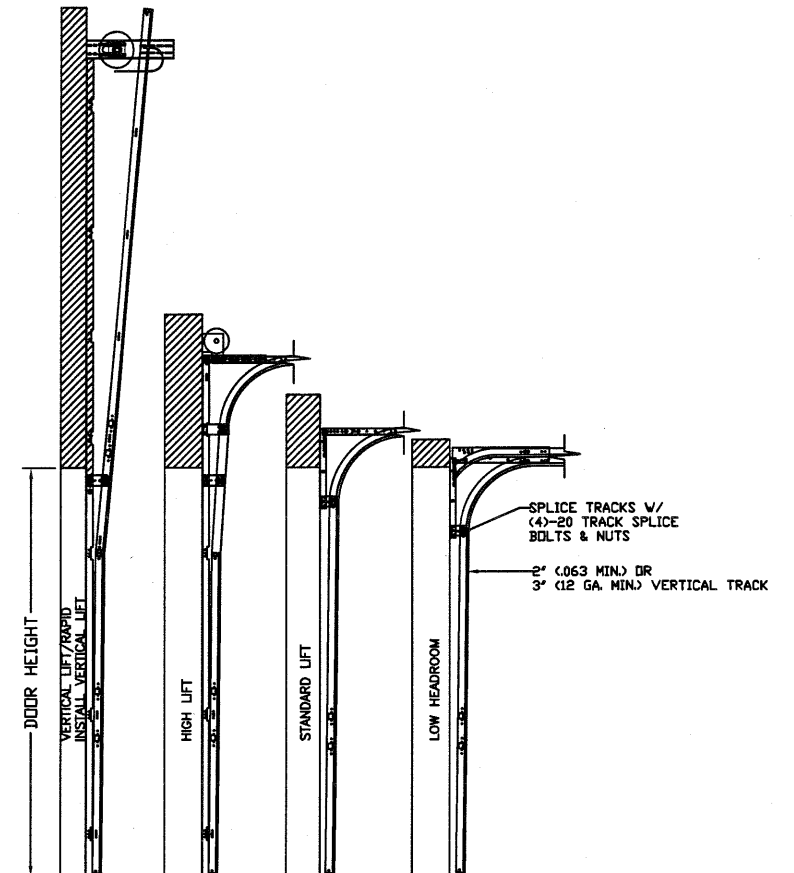
MODEL 1350 AMARR 2741 (27GA)				DRAWING NUMBER IBC-1312-133-15
MODEL 2700 AMARR 2742 (27GA)				
MODEL 2720 AMARR 2042 (20GA)				
SIZE B	DRAWN BY DRD	DATE 4/13/18	CHECKED BY RLR	DATE 5/17/18
ENTREMATIC 165 CARRIAGE COURT WINSTON-SALEM, NC. 27105				SHEET 3 OF 4

TABLE 1

Section Width (ft)	Center Stile		Max Design Loads Allowed	
	1st (in)	2nd (in)	Positive (PSF)	Negative (PSF)
9' 4"	36"	76"	31.7	36.4
9' 6"	37"	77"	31.3	35.9
9' 8"	38"	78"	30.9	35.5
9' 10"	39"	79"	30.5	35.0
10' 0"	40"	80"	30.1	34.6
10' 2"	41"	81"	29.7	34.1
10' 4"	42"	82"	29.2	33.6
10' 6"	43"	83"	28.8	33.0
10' 8"	44"	84"	28.3	32.5
10' 10"	45"	85"	27.9	32.0
11' 0"	46"	86"	27.5	31.5
11' 2"	47"	87"	27.1	31.1
11' 4"	48"	88"	26.7	30.6
11' 6"	49"	89"	26.3	30.2
11' 8"	50"	90"	25.9	29.7
11' 10"	51"	91"	25.5	29.3
12' 0"	48"	96"	25.1	28.8
12' 2"	49"	97"	25.0	28.7



TRACK CONFIGURATION FOR UP TO 24' TALL DOORS
SEE TABLE 2



AVAILABLE TRACK CONFIGURATIONS
N.T.S.

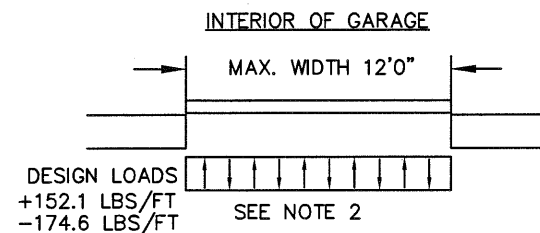
TABLE 2

DOOR HEIGHT	TRACK ATTACHMENT												TYPICAL SPLICE
	A	B	C	D	E	F	G	H	I	J	K	L	
7' 0"	10.0"	34"	58"										76"
7' 6"	10.0"	34"	58"										82"
8' 0"	10.0"	34"	58"										88"
8' 6"	10.0"	34"	58"	82"									94"
9' 0"	10.0"	34"	58"	82"									100"
9' 6"	10.0"	34"	58"	82"									106"
10' 0"	10.0"	34"	58"	82"	106"								112"
11' 0"	10.0"	34"	58"	82"	106"								124"
12' 0"	10.0"	34"	58"	82"	106"	130"							136"
13' 0"	10.0"	34"	58"	82"	106"	130"							148"
14' 0"	10.0"	34"	58"	82"	106"	130"	154"						160"
15' 0"	10.0"	34"	58"	82"	106"	130"	154"						172"
16' 0"	10.0"	34"	58"	82"	106"	130"	154"	178"					184"
17' 0"	10.0"	34"	58"	82"	106"	130"	154"	178"					196"
18' 0"	10.0"	34"	58"	82"	106"	130"	154"	178"	202"				208"
19' 0"	10.0"	34"	58"	82"	106"	130"	154"	178"	202"				220"
20' 0"	10.0"	34"	58"	82"	106"	130"	154"	178"	202"	226"			232"
21' 0"	10.0"	34"	58"	82"	106"	130"	154"	178"	202"	226"			244"
22' 0"	10.0"	34"	58"	82"	106"	130"	154"	178"	202"	226"	250"		256"
23' 0"	10.0"	34"	58"	82"	106"	130"	154"	178"	202"	226"	250"		268"
24' 0"	10.0"	34"	58"	82"	106"	130"	154"	178"	202"	226"	250"	274"	280"

ALL TRACK ATTACHMENTS +/- 2" ALLOWED USING SYP OR SPF NO.2 OR BETTER ONLY
AMARR MODEL 1350 ONLY AVAILABLE UP TO 14'

SPECIFICATIONS AND NOTES

1. ALL THE LOAD FROM THE DOOR IS TRANSFERRED TO THE VERTICAL TRACK, FROM THE TRACK THE LOAD IS TRANSFERRED TO THE VERTICAL JAMBS. THE HORIZONTAL JAMB OR HEADER RECEIVES NO PORTION OF THE LOAD TRANSFERRED FROM THE DOOR.
2. EACH VERTICAL JAMBS RECEIVES MAXIMUM DESIGN LOADS OF: +152.1 LBS/FT & -174.6 LBS/FT
3. DOOR AND HARDWARE WILL BE DESIGNED, MANUFACTURED AND INSTALLED WITH STANDARDS AS SET FORTH BY DASMA.
4. DOOR SECTIONS SHALL BE 27 GA. (.015) MIN. EXTERIOR SKIN ROLLED FORMED, W/ BAKED ON POLYESTER FINISH
5. DOORS UP TO 24'0" HIGH HAVE (2) 3" 20GA STRUTS ON BOTTOM SECTION AND (1) 3" 20GA STRUT ON EACH INTERMEDIATE AND TOP SECTION.
6. SUPPORTING STRUCTURAL ELEMENTS SHALL BE DESIGNED BY A REGISTERED PROFESSIONAL ENGINEER FOR WIND LOADS INDICATED ON THIS DRAWING IN ADDITION TO OTHER LOADINGS.



REV	DESCRIPTION OF REVISIONS	DATE	BY

MAX SIZE 16'2 x 24'

DESIGN LOADS +25.0 PSF -28.7 PSF

TEST LOADS +37.5 PSF -43.1 PSF

Thomas L. Shelmerdine, PE (TX PE #85829) Structural Solutions, PA (TX Firm #04063)

STATE OF TEXAS
THOMAS L. SHELMERDINE
85829
PROFESSIONAL ENGINEER
TX

5921-G W. Friendly Ave., Greensboro, NC 27410

Amarr
ENTREMATICS

MODEL 1350 AMARR 2741 (27GA)
MODEL 2700 AMARR 2742 (27GA)
MODEL 2720 AMARR 2042 (20GA)

SIZE	DRAWN BY DRD	DATE 4/13/18	DRAWING NUMBER
B	CHECKED BY RLR	DATE 5/17/18	IBC-1312-133-15

ENTREMATICS
165 CARRIAGE COURT WINSTON-SALEM, N.C. 27105

SHEET 4 OF 4