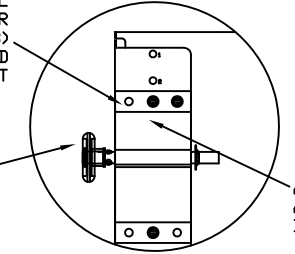


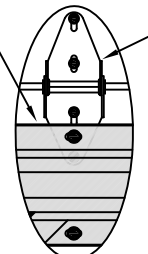
13 GA. (MIN.) GALV. STEEL COMMERCIAL TOP ROLLER BRACKET ATTACHED W/(3) 1/4" x 3/4" HEX HEAD SCREWS PER BRACKET

2" 10 BALL STEEL 5"(MIN) STEM ROLLER W/ 7/16" RETAINER FOR NON-THREADED SHAFTS



TYPICAL TOP FIXTURES
N.T.S. ①

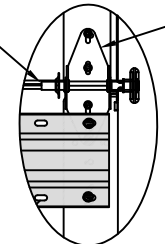
4 1/2"H X 20 GA. R-TRUSS ATTACHED W/(2) 1/4" X 3/4" HEX HEAD SCREWS AT ENDSTILES AND EACH CENTER STILE ON TOP SECTION



TYPICAL CENTER HINGE
N.T.S. ②

14GA. (MIN.) CENTER HINGE ATTACHED W/ A TOTAL OF (5) 1/4" x 3/4" HEX HEAD SCREWS (2) SCREWS IN THE TOP LEAF (3) SCREWS IN THE BOTTOM LEAF

2" 10 BALL STEEL ROLLER W/5" STEM (MIN) W/ BOLT RETAINER USED FOR NON THREADED SHAFT



TYPICAL END HINGE
N.T.S. ③

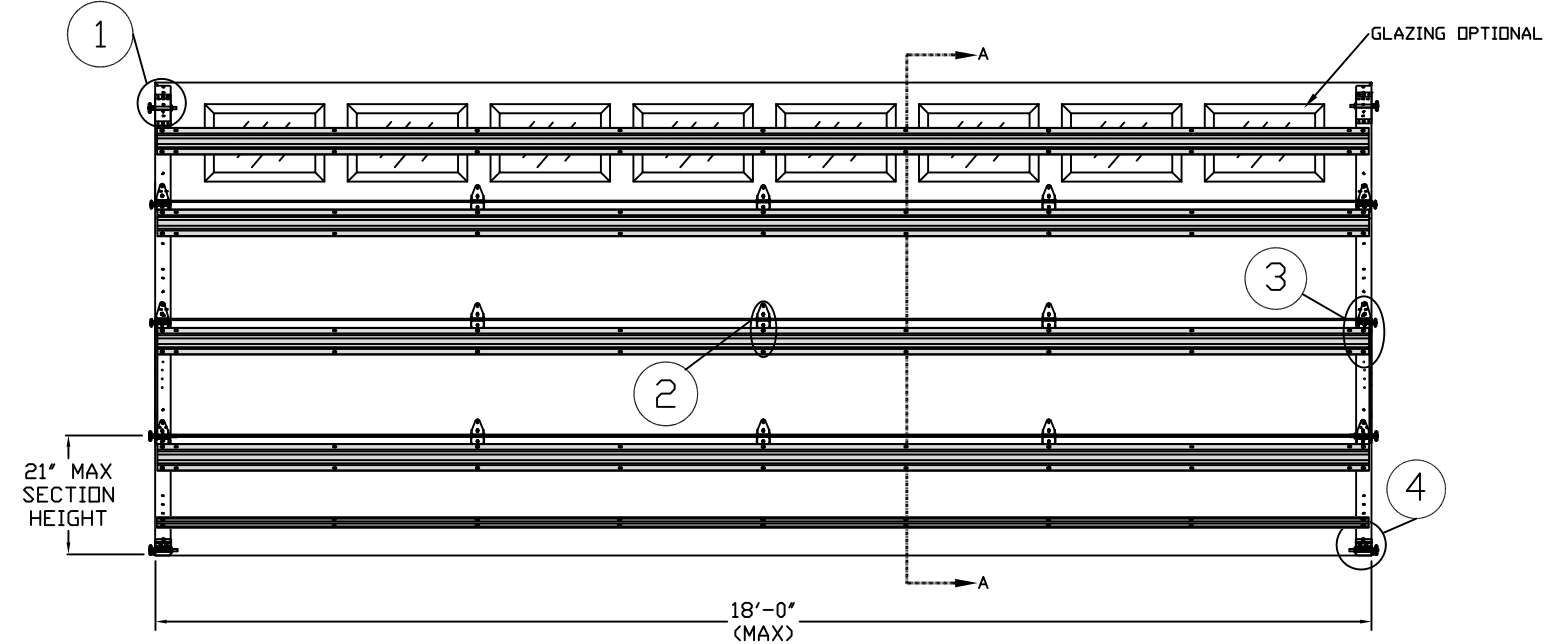
14 GA. (MIN.) END HINGE ROLLER CARRIERS ATTACHED W/ (5) TOTAL 1/4" x 3/4" HEX HEAD SCREWS (2) SCREWS UPPER LEAF (3) SCREWS LOWER LEAF

THE METHOD OF TESTING WAS IN SUBSTANTIAL CONFORMANCE WITH THE PROCEDURE DESCRIBED IN ASTM E330 AND DASMA 108. THE PRESSURES SHOWN ON THE DRAWINGS WERE CALCULATED USING ASCE 7-16 WITH THE FOLLOWING PARAMETERS (5 FEET OF DOOR WIDTH IN THE END ZONE, ROOF AT ANY SLOPE):

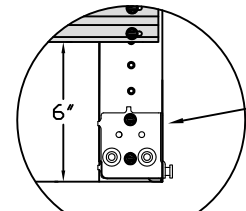
WIND SPEED (MPH)	168	152	145	138	133
EXPOSURE LEVEL	B	C	C	D	D
MEAN ROOF HEIGHT	30'	15'	25'	15'	25'

SPECIFICATIONS AND NOTES

- DOORS AND HARDWARE WILL BE DESIGNED, MANUFACTURED AND INSTALLED WITH STANDARDS AS SET FORTH BY DASMA. EACH VERTICAL JAMBS RECEIVES MAXIMUM DESIGN LOADS OF: +228.6 LBS/FT & -258.3 LBS/FT
- DOOR SECTIONS SHALL BE 27 GA. MIN. (.0151") ROLLED FORMED LIGHT COMMERCIAL QUALITY
- SUPPORTING STRUCTURAL ELEMENTS SHALL BE DESIGNED BY A REGISTERED PROFESSIONAL ENGINEER FOR WIND LOADS INDICATED ON THIS DRAWING IN ADDITION TO OTHER LOADINGS.
- DOOR IS MANUFACTURED AND TESTED IN ACCORDANCE WITH THE 2018 IRC/IBC

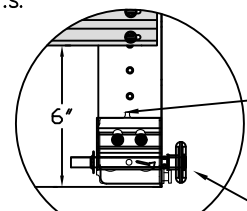


INSIDE ELEVATION
N.T.S.



TRBB-375 BOTTOM BRACKET
N.T.S. ④A

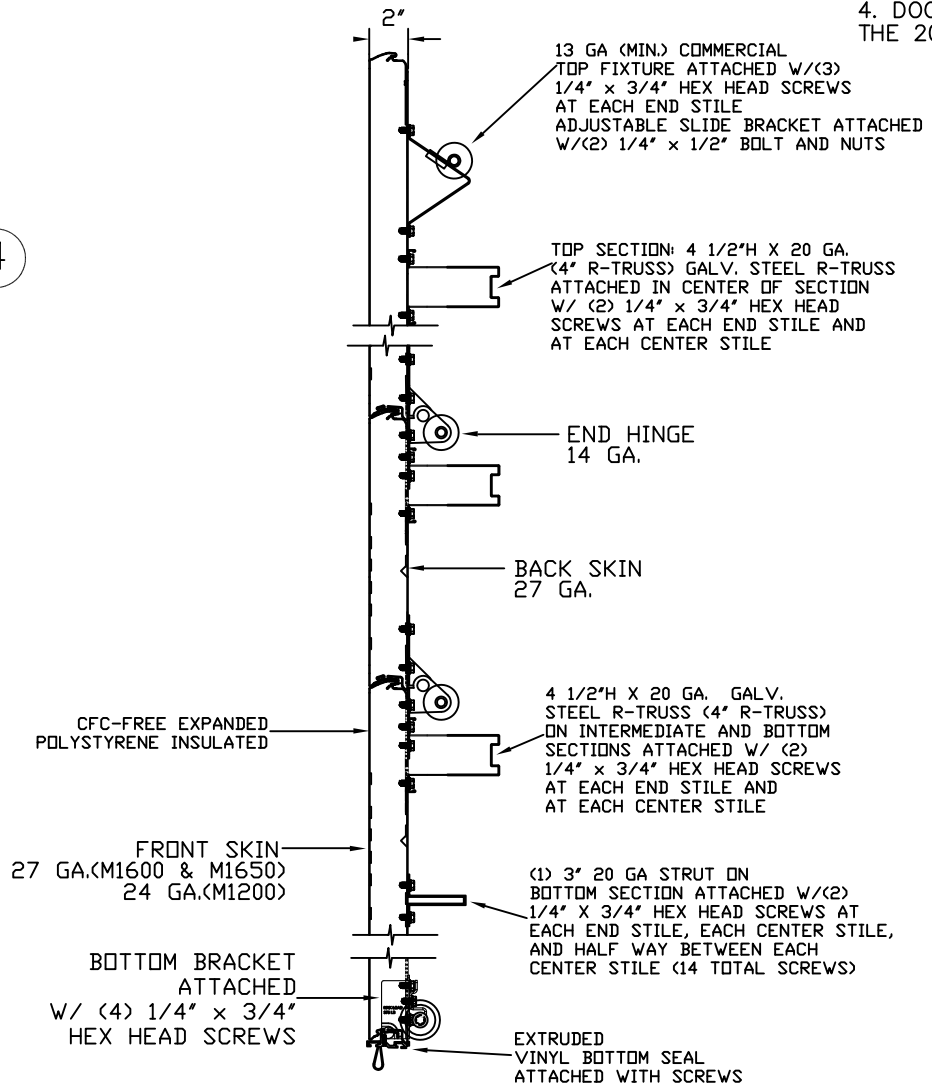
13 GA. BOTTOM BRACKET BASE ATTACHED W/(2) 1/4" X 3/4" HEX HEAD SCREWS



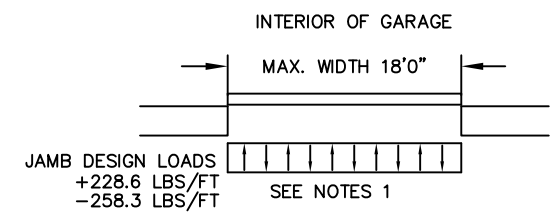
TRBB-375 BOTTOM BRACKET
N.T.S. ④B

13 GA. BOTTOM BRACKET ASSEMBLY ATTACHED W/(4) 1/4" X 3/4" HEX HEAD SCREWS (2 ON BASE AND 2 ON ROLLER FLANGE)

2" 10 BALL STEEL 5"(MIN) STEM ROLLER W/ 7/16" RETAINER FOR NON-THREADED SHAFTS



SECTION A-A (SIDE VIEW)
N.T.S.



REV	DESCRIPTION OF REVISIONS	DATE	BY
A	ADDED HERITAGE MODEL/DRAWING UPDATES	2/28/22	RLR

MAX SIZE
18' WIDTH
14' HEIGHT

DESIGN LOADS
+25.4 PSF
-28.7 PSF

TEST LOADS
+38.1 PSF
-43.05 PSF

This document has been digitally signed & sealed by Thomas L. Shelmerdine, PE on the date shown. Printed copies of this document are not considered signed & sealed, and the signature must be verified on any electronic copies.

Thomas L. Shelmerdine, PE (TX PE #85829)
Structural Solutions, PA (TX Firm #F-004063)
5921-G W. Friendly Ave., Greensboro, NC 27410 TX



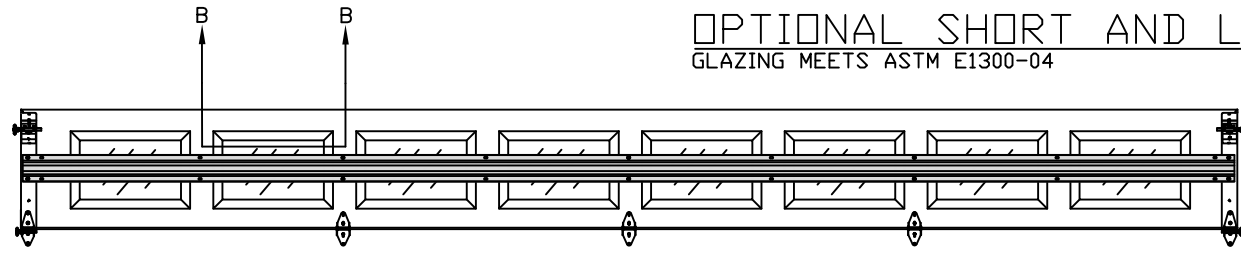
MODEL #1600 AMARR LINCOLN 3000
MODEL #1650 AMARR HILLCREST 3000
MODEL #1200 AMARR HERITAGE 3000

SIZE	DRAWN BY	RLR	DATE	12/15/11	DRAWING NUMBER
B	CHECKED BY	RLR	DATE	12/15/11	IRC-1618-130-24

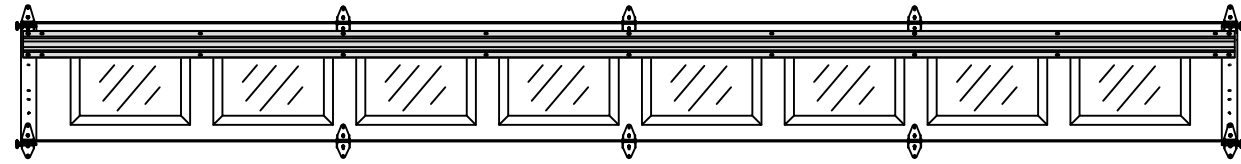
AMARR COMPANY
165 CARRIAGE COURT WINSTON-SALEM, N.C. 27105 SHEET 1 OF 3

OPTIONAL SHORT AND LONG PANEL GLAZING LAYOUTS

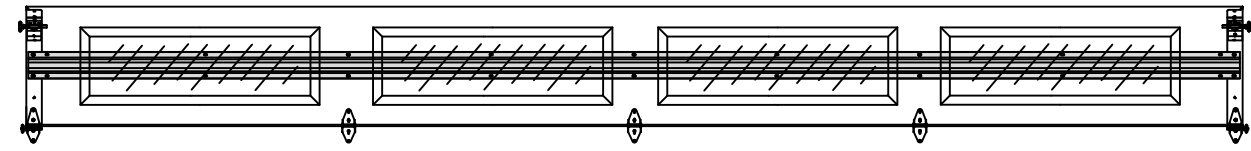
GLAZING MEETS ASTM E1300-04



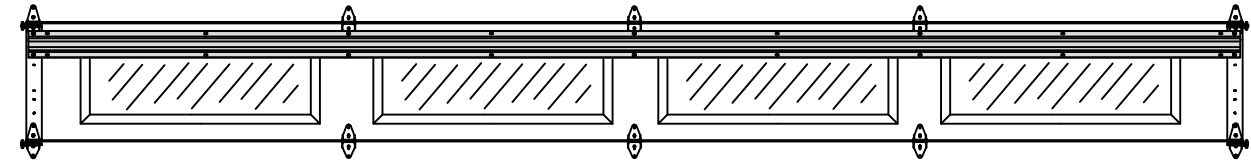
TOP SECTION



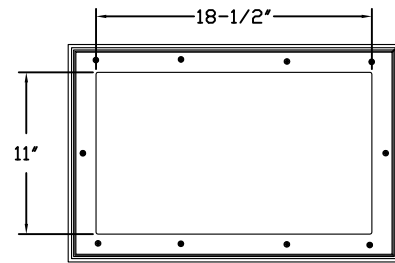
INTERMEDIATE SECTION



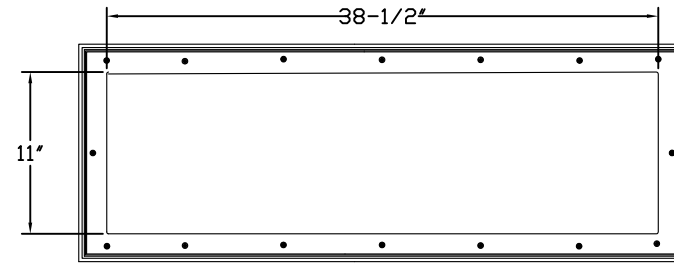
TOP SECTION



INTERMEDIATE SECTION



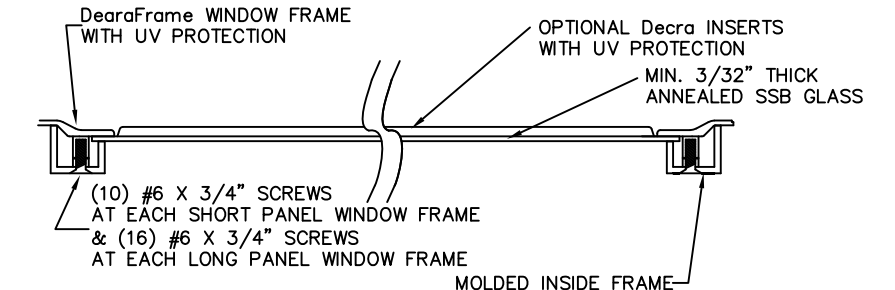
SHORT PANEL GLAZING FASTENER DETAIL
N.T.S.



LONG PANEL GLAZING FASTENER DETAIL
N.T.S.

GLAZING OPTION CROSS SECTION

GLAZING NOT AVAILABLE IN WIND-BORNE DEBRIS REGION
GLAZING MEETS ASTM E1300-04

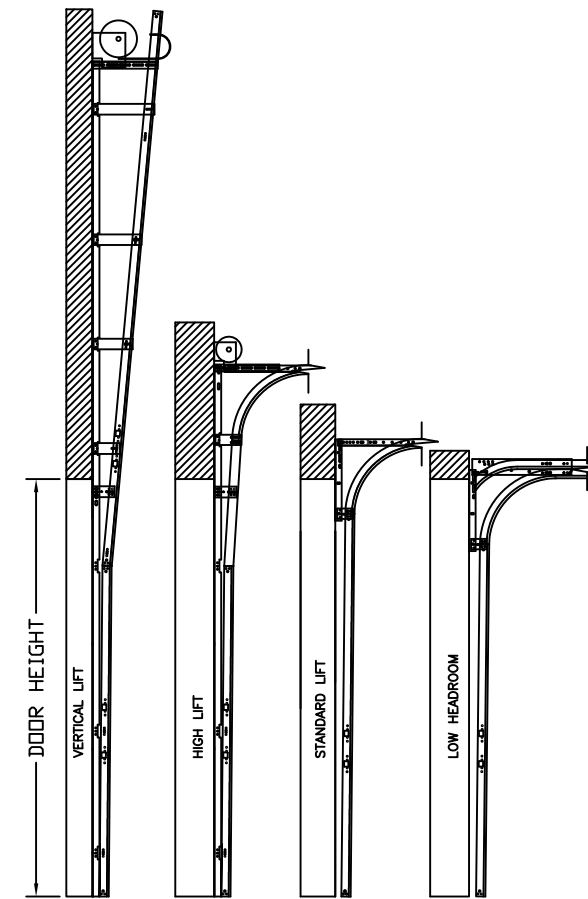
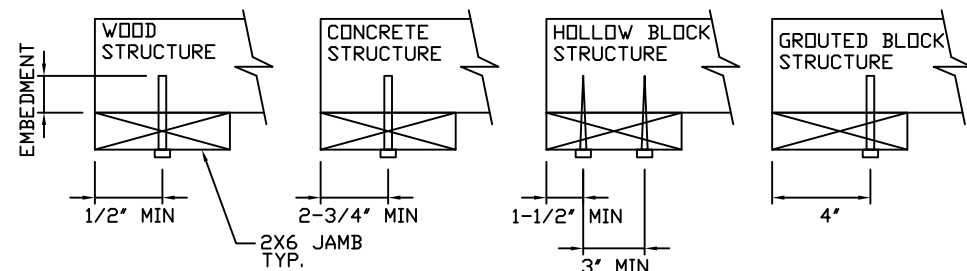


SECTION B-B

WOOD JAMB ATTACHMENT TO STRUCTURE

- 2 X 6 VERTICAL JAMB ATTACHMENT TO WOOD FRAME STRUCTURE**
5/16" X 3" LAG SCREWS STARTING 6" FROM ENDS THEN 20" O.C. (1 1/2" EMBEDMENT)
- 2 X 6 VERTICAL JAMB ATTACHMENT TO 2,000 PSI CONCRETE**
HILTI KWIK BOLT 3/8" X 4" STARTING 6" FROM ENDS THEN 24" O.C. (2 1/2" EMBEDMENT)
HILTI SLEEVE ANCHOR 3/8" X 2-3/4" STARTING 6" FROM ENDS THEN 18" O.C. (1 1/4" EMBEDMENT)
ITW/RAMSET REDHEAD (TRU-BOLT) 3/8" X 4" STARTING 6" FROM ENDS THEN 24" O.C. (2 1/2" EMBEDMENT)
- 2 X 6 VERTICAL JAMB ATTACHMENT TO HOLLOW C-90 BLOCK**
SIMPSON 1/4" X 3" TITEN SCREWS STARTING 6" FROM ENDS, USE PAIRS OF FASTENERS (3' APART) AT 8" O.C. (1 1/2" EMBEDMENT)
HILTI 1/4" X 2-3/4" KWIK-CON II+ SCREWS STARTING 6" FROM ENDS, USE PAIRS OF FASTENERS (3' APART) AT 8" O.C. (1 1/4" EMBEDMENT)
- 2 X 6 VERTICAL JAMB ATTACHMENT TO GROUTED C-90 BLOCK (2000 PSI GROUT)**
HILTI SLEEVE ANCHOR 3/8" X 2-3/4" STARTING 6" FROM ENDS THEN 22" O.C. (1 1/4" EMBEDMENT) (OR, USE FASTENERS FOR HOLLOW C-90 BLOCK)

- *LAGS AND BOLTS CAN BE COUNTERSUNK TO PROVIDE A FLUSH MOUNTING SURFACE.
- *PREPARATION OF WOOD JAMBS BY OTHERS



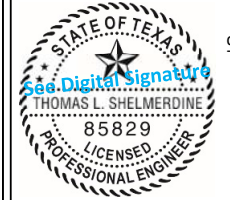
AVAILABLE TRACK CONFIGURATIONS
N.T.S.

REV	DESCRIPTION OF REVISIONS	DATE	BY
A	ADDED HERITAGE MODEL/DRAWING UPDATES	2/28/22	RLR

MAX SIZE
18" WIDTH
14" HEIGHT

DESIGN LOADS
+25.4 PSF
-28.7 PSF

TEST LOADS
+38.1 PSF
-43.05 PSF



This document has been digitally signed & sealed by Thomas L. Shelmerdine, PE on the date shown. Printed copies of this document are not considered signed & sealed, and the signature must be verified on any electronic copies.

Thomas L. Shelmerdine, PE (TX PE #85829)
Structural Solutions, PA (TX Firm #F-004063)
5921-G W. Friendly Ave., Greensboro, NC 27410 TX



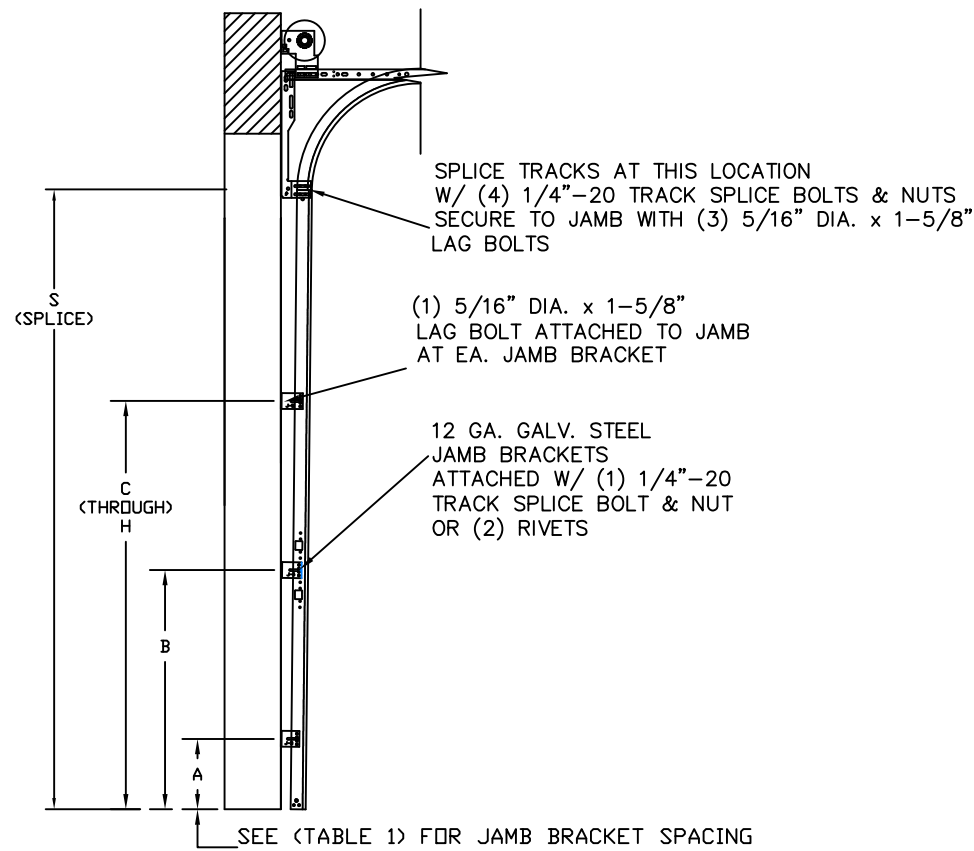
MODEL #1600 AMARR LINCOLN 3000
MODEL #1650 AMARR HILLCREST 3000
MODEL #1200 AMARR HERITAGE 3000

SIZE	DRAWN BY	RLR	DATE	12/15/11	DRAWING NUMBER
B	CHECKED BY	RLR	DATE	12/15/11	IRC-1618-130-24

TABLE 1

DOOR HEIGHT	TRACK ATTACHMENT								SPLICE
	A	B	C	D	E	F	G	H	
6' 6"	10"	21"	39"	57"					70"
7'	10"	21"	42"	63"					76"
7' 6"	10"	18"	36"	54"	72"				82"
8'	10"	21"	39"	57"	75"				88"
8' 6"	10"	21"	42"	63"	81"				94"
9'	10"	18"	36"	54"	72"	90"			100"
9' 6"	10"	21"	39"	57"	75"	93"			106"
10'	10"	21"	42"	63"	81"	99"			112"
10' 6"	10"	21"	42"	63"	84"	105"			118"
11'	10"	21"	39"	57"	75"	93"	111"		124"
11' 6"	10"	21"	42"	63"	81"	99"	117"		130"
12'	10"	21"	42"	63"	84"	105"	123"		136"
12' 6"	10"	21"	39"	57"	75"	93"	111"	129"	142"
13'	10"	21"	42"	63"	81"	99"	117"	135"	148"
13' 6"	10"	21"	42"	63"	84"	105"	123"	141"	154"
14'	10"	21"	42"	63"	84"	105"	126"	147"	160"

ALL TRACK ATTACHMENT SPACING +/-2" WITH SYP NO. 2 OR BETTER ONLY



TRACK CONFIGURATION FOR 6'6" UP TO 14' TALL DOORS
N.T.S.

TABLE 2

Section Width (ft)	Panel Type	Center Stile Locations (Measured from Left Edge)			Max Design Loads Allowed	
		1st (in)	2nd (in)	3rd (in)	Positive (PSF)	Negative (PSF)
16' 2"	Short	50.27	97.00	143.73	28.1	31.8
16' 2"	Long	51.17	97.00	142.83	28.1	31.8
16' 2"	Bead Board	48.75	97.00	145.25	28.1	31.8
16' 4"	Short	51.27	98.00	144.73	27.9	31.5
16' 4"	Long	52.17	98.00	143.83	27.9	31.5
16' 4"	Bead Board	49.08	98.00	146.92	27.9	31.5
16' 6"	Short	52.27	99.00	145.73	27.6	31.2
16' 6"	Long	51.34	99.00	146.66	27.6	31.2
16' 6"	Bead Board	49.42	99.00	148.59	27.6	31.2
16' 8"	Short	51.34	100.00	148.66	27.3	30.8
16' 8"	Long	52.20	100.00	147.80	27.3	30.8
16' 8"	Bead Board	49.92	100.00	150.09	27.3	30.8
16' 10"	Short	51.50	101.00	150.50	27.0	30.5
16' 10"	Long	53.20	101.00	148.80	27.0	30.5
16' 10"	Bead Board	50.15	101.00	151.59	27.0	30.5
17' 0"	Short	53.34	102.00	150.66	26.8	30.2
17' 0"	Long	54.20	102.00	149.80	26.8	30.2
17' 0"	Bead Board	50.92	102.00	153.09	26.8	30.2
17' 2"	Short	53.00	103.00	153.00	26.5	29.9
17' 2"	Long	55.20	103.00	150.80	26.5	29.9
17' 2"	Bead Board	51.42	103.00	154.59	26.5	29.9
17' 4"	Short	54.00	104.00	154.00	26.2	29.7
17' 4"	Long	56.20	104.00	151.80	26.2	29.7
17' 4"	Bead Board	51.92	104.00	156.09	26.2	29.7
17' 6"	Short	55.00	105.00	155.00	26.0	29.4
17' 6"	Long	57.20	105.00	152.80	26.0	29.4
17' 6"	Bead Board	52.42	105.00	157.59	26.0	29.4
17' 8"	Short	54.80	106.00	157.20	25.7	29.1
17' 8"	Long	55.80	106.00	156.20	25.7	29.1
17' 8"	Bead Board	52.92	106.00	159.09	25.7	29.1
17' 10"	Short	55.80	107.00	158.20	25.5	28.8
17' 10"	Long	56.25	107.00	157.75	25.5	28.8
17' 10"	Bead Board	53.42	107.00	160.59	25.5	28.8
18' 0"	Short	57.25	108.00	158.75	25.4	28.7
18' 0"	Long	57.80	108.00	158.20	25.4	28.7
18' 0"	Bead Board	53.92	108.00	162.09	25.4	28.7

TABLE 3

SECTION	STRUT SIZE
TOP	4.5"
7TH	4.5"
6TH	4.5"
5TH	4.5"
4TH	4.5"
3RD	4.5"
2ND	4.5"
BOTTOM	4.5"
	3"

TABLE 4

DOOR HEIGHT	SECTION HEIGHTS							
	Btm	#2	#3	#4	#5	#6	#7	#8
14' 0"	21"	21"	21"	21"	21"	21"	21"	21"
13' 6"	21"	21"	21"	21"	21"	18"	18"	21"
13' 0"	21"	21"	21"	18"	18"	18"	18"	21"
12' 6"	21"	18"	18"	18"	18"	18"	18"	21"
12' 0"	21"	21"	21"	21"	21"	18"	21"	
11' 6"	21"	21"	21"	18"	18"	18"	21"	
11' 0"	21"	18"	18"	18"	18"	18"	21"	
10' 6"	21"	21"	21"	21"	21"	21"		
10' 0"	21"	21"	21"	18"	18"	21"		
9' 6"	21"	18"	18"	18"	18"	21"		
9' 0"	18"	18"	18"	18"	18"	18"		
8' 6"	21"	21"	21"	18"	21"			
8' 0"	21"	18"	18"	18"	21"			
7' 6"	18"	18"	18"	18"	18"			
7' 0"	21"	21"	21"	21"				
6' 6"	21"	18"	18"	21"				

REV	DESCRIPTION OF REVISIONS	DATE	BY
A	ADDED HERITAGE MODEL/DRAWING UPDATES	2/28/22	RLR

MAX SIZE
18' WIDTH
14' HEIGHT

DESIGN LOADS
+25.4 PSF
-28.7 PSF

TEST LOADS
+38.1 PSF
-43.05 PSF

THOMAS L. SHELMERDINE
85829
LICENSED PROFESSIONAL ENGINEER

This document has been digitally signed & sealed by Thomas L. Shelmerdine, PE on the date shown. Printed copies of this document are not considered signed & sealed, and the signature must be verified on any electronic copies.

Thomas L. Shelmerdine, PE (TX PE #85829)
Structural Solutions, PA (TX Firm #F-004063)
5921-G W. Friendly Ave., Greensboro, NC 27410

MODEL #1600 AMARR LINCOLN 3000
MODEL #1650 AMARR HILLCREST 3000
MODEL #1200 AMARR HERITAGE 3000

SIZE	DRAWN BY	RLR	DATE	12/15/11	DRAWING NUMBER
B	CHECKED BY	RLR	DATE	12/15/11	IRC-1618-130-24
AMARR COMPANY 165 CARRIAGE COURT WINSTON-SALEM, N.C. 27105					SHEET 3 OF 3