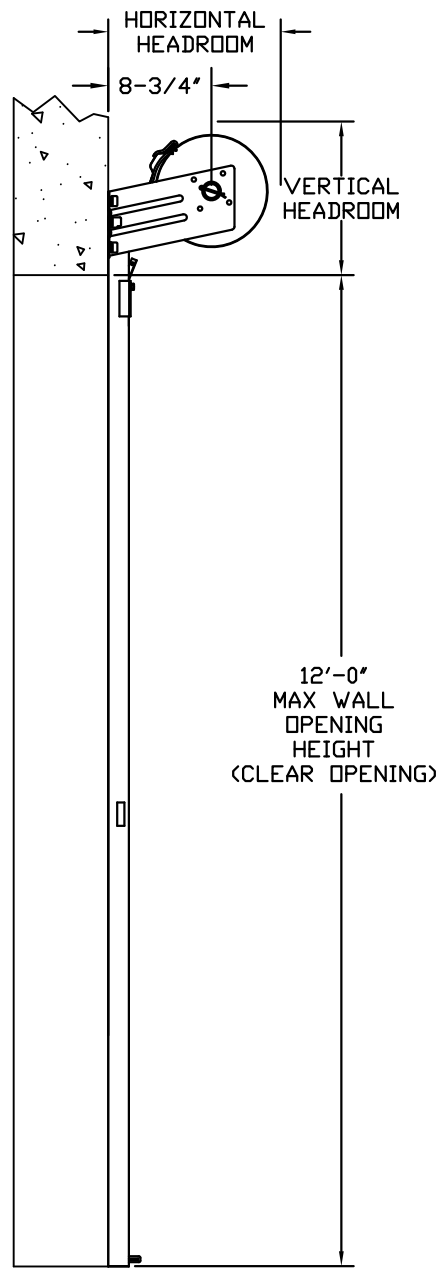
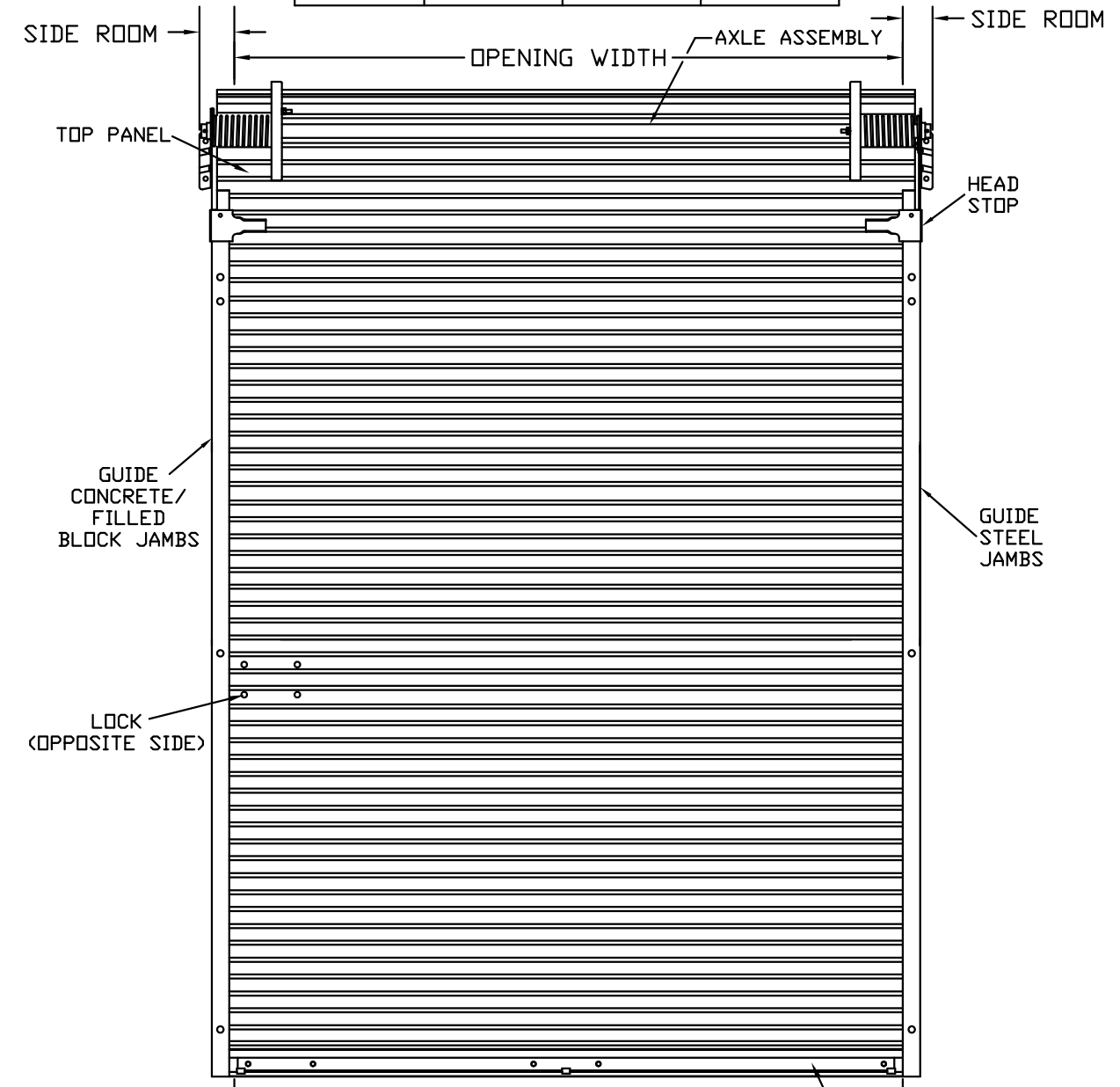


REVISIONS				
REV	DESCRIPTION	DATE	BY	APPROVAL
1	MODIFIED FOR TDI	12-19-13		B.A.

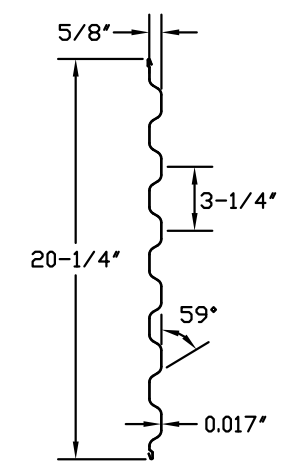
MINIMUM DIMENSIONS			
OPENING HEIGHT	THRU 7'-4"	OVER 7'-4" THRU 8'-8"	OVER 8'-8" THRU 10'-0"
VERTICAL HEADROOM	15-1/2"	16"	18"
HORIZONTAL HEADROOM	17"	17-1/2"	19-1/4"
SIDE ROOM	3-1/4"	3-1/4"	3-1/2"



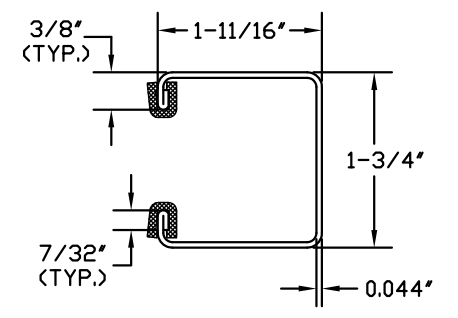
SIDE VIEW



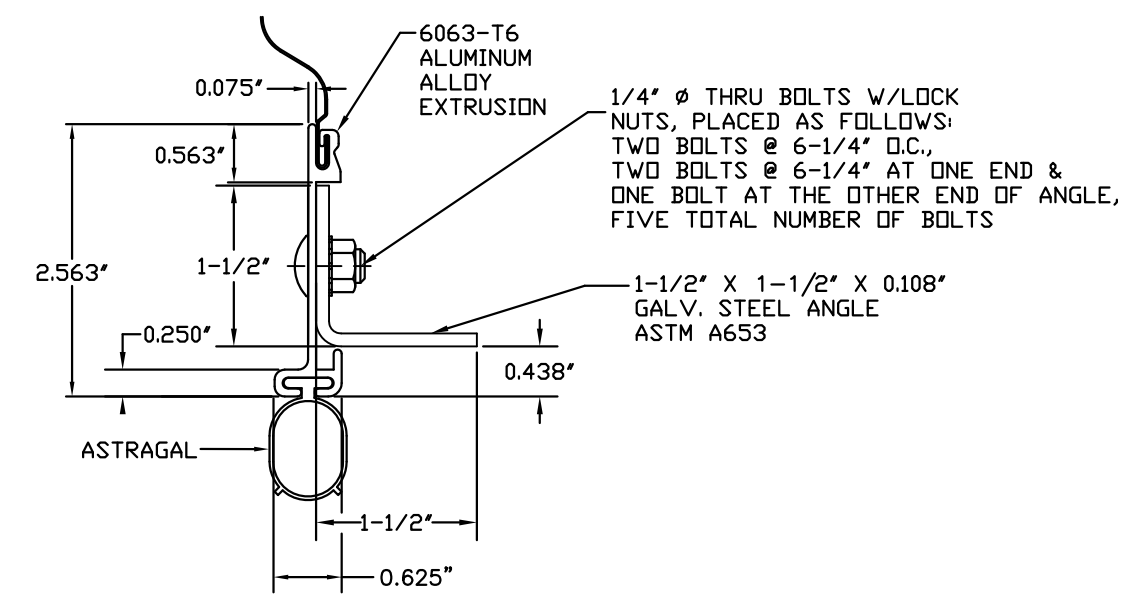
INSIDE ELEVATION



ASTM A653 SS GRADE 80 WITH FULL COAT OF PRIMER AND BAKED POLYESTER FINISH COAT
TYPICAL PANEL (26 GA.) DETAIL



ASTM A653 G40 GALVANIZED CS TYPE B
GUIDE DETAIL



BOTTOM BAR ASSEMBLY DETAIL

JOHN E. SCATES
3121 FAIRGATE
CARROLTON, TX 75007

FL PE 51737
TX PE 56308/F-2203

THESE CONFIDENTIAL DOCUMENTS SUBMITTED BY DBCI CONTAIN INFORMATION OF A PROPRIETARY NATURE AND MAY NOT BE REPRODUCED OR USED TO MANUFACTURE ANYTHING IN PART OR IN WHOLE FOR ANY PURPOSE OTHER THAN THAT WHICH IS NECESSARY FOR PREPARATION OF BIDS OR ENGINEERING WITHOUT THE EXPRESS PERMISSION OF DBCI WHICH MAY RECALL DOCUMENTS AT ANY TIME.

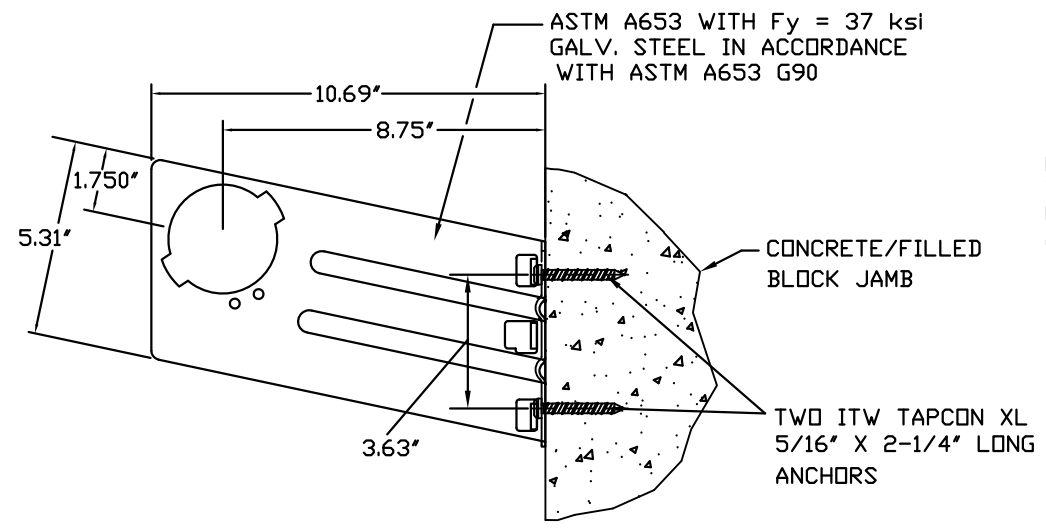
PART NUMBER: N/A	
MATERIAL: N/A	
APPLIED FINISH: N/A	
UNIT OF MEASURE: N/A	
APPROVALS	DATE:
DRAWN H.B.	5/29/07
CHECKED H.B.	5/30/07
APPROVED	

DBCI DOORS & BUILDING COMPONENTS
DOUGLASVILLE, GA CHANDLER, AZ HOUSTON, TX
©2000 DBCI ALL RIGHTS RESERVED

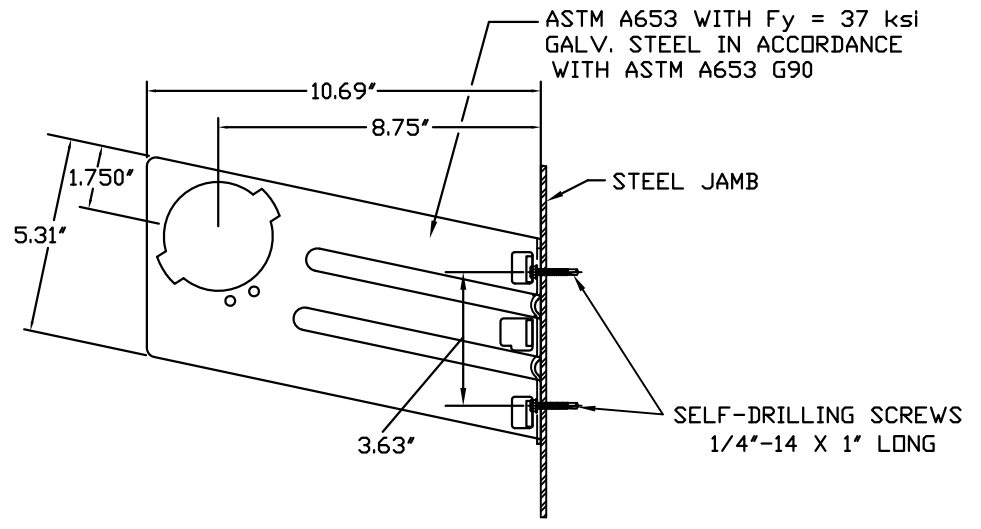
26 GA. WIND LOAD UP TO 8'-8" x 12'-0" SIZE
SERIES 650 DOOR ASSEMBLY

SIZE B	DRAWING NUMBER -400-005-0074.02	REV. 1
SCALE: NONE	SHEET 1	OF 2

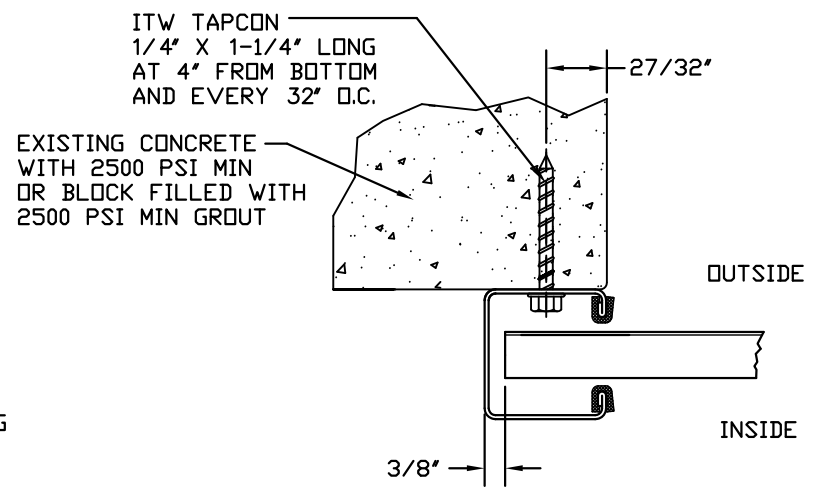
REVISIONS			
REV	DESCRIPTION	DATE	APPROVAL
1	MODIFIED FOR TDI	12-19-13	B.A.



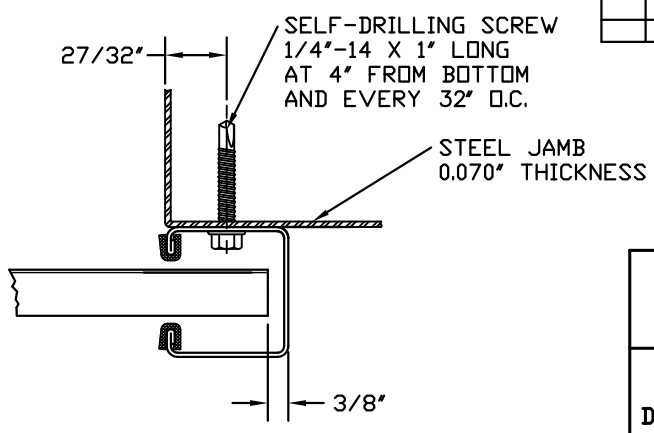
DOOR MOUNTING BRACKET TO MASONRY DETAIL



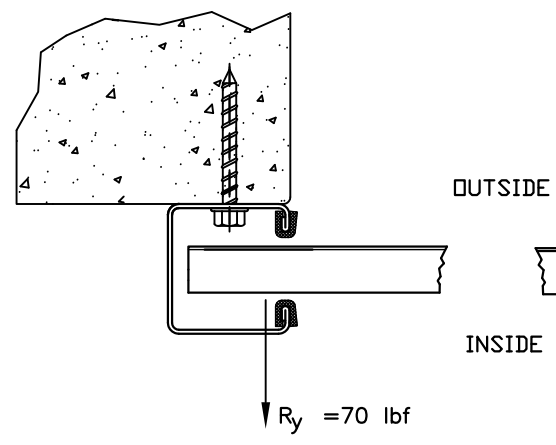
DOOR MOUNTING BRACKET TO STEEL DETAIL



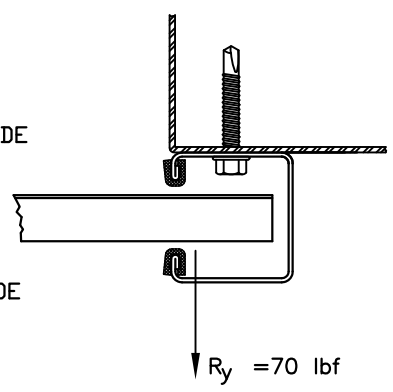
FOR MASONRY JAMBS:
CURTAIN WIDTH=OPENING WIDTH+3'
CONCRETE/FILLED BLOCK JAMBS
LH GUIDE MOUNT SHOWN



FOR STEEL JAMBS:
CURTAIN WIDTH=OPENING WIDTH+3'
STEEL JAMBS
RH GUIDE MOUNT SHOWN



CONCRETE/FILLED BLOCK JAMBS
LH GUIDE MOUNT SHOWN



STEEL JAMBS
RH GUIDE MOUNT SHOWN

SUPERIMPOSED LOAD DIAGRAM

DOOR SCHEDULE	
DOOR WIDTH	DESIGN PRESSURE (PSF)
≤ 3'-0"	+ 35.3
	- 38.4
4'-0"	+ 27.8
	- 30.2
5'-0"	+ 22.8
	- 24.8
6'-0"	+ 19.4
	- 21.1
7'-0"	+ 16.8
	- 18.3
8'-0"	+ 14.9
	- 16.2
8'-8"	+ 13.9
	- 15.1

GENERAL NOTES:

1. THIS DOOR EVALUATED IN ACCORDANCE WITH TEST METHODS ASTM E330-02 AND ANSI/DASMA 108-05.
2. THIS PRODUCT EVALUATION IS GENERIC. IT DOES NOT INCLUDE INFORMATION PREPARED FOR A SPECIFIC SITE.
3. IT IS THE CONTRACTOR'S RESPONSIBILITY TO VERIFY THE STRUCTURAL CAPACITY OF THE SUBSTRATE (JAMB) TO RESIST THE LOADS IMPOSED BY THE ROLL-UP DOOR.
4. ALL DOOR JAMBS (MASONRY OR STEEL) MUST BE DESIGNED TO RESIST THE FORCES SHOWN IN SUPERIMPOSED LOAD DIAGRAM.
5. THE DOOR ASSEMBLY SHALL BE INSTALLED IN ACCORDANCE WITH THE MANUFACTURER'S INSTALLATION INSTRUCTIONS.

JOHN E. SCATES
3121 FAIRGATE
CARROLTON, TX 75007

FL PE 51737
TX PE 56308/F-2203

THESE CONFIDENTIAL DOCUMENTS SUBMITTED BY DBCI CONTAIN INFORMATION OF A PROPRIETARY NATURE AND MAY NOT BE REPRODUCED OR USED TO MANUFACTURE ANYTHING IN PART OR IN WHOLE FOR ANY PURPOSE OTHER THAN THAT WHICH IS NECESSARY FOR PREPARATION OF BIDS OR ENGINEERING WITHOUT THE EXPRESS PERMISSION OF DBCI WHICH MAY RECALL DOCUMENTS AT ANY TIME.

PART NUMBER: N/A	
MATERIAL: N/A	
APPLIED FINISH: N/A	
UNIT OF MEASURE: N/A	
APPROVALS	DATE:
DRAWN H.B.	5/29/07
CHECKED H.B.	5/30/07
APPROVED	

DOORS & BUILDING COMPONENTS
DOUGLASVILLE, GA CHANDLER, AZ HOUSTON, TX
©2000 DBCI ALL RIGHTS RESERVED

26 GA. WIND LOAD UP TO 8'-8" x 12'-0" SIZE
SERIES 650 DOOR ASSEMBLY

SIZE B	DRAWING NUMBER -400-005-0074.02	REV. 1
SCALE: NONE	SHEET 2	OF 2