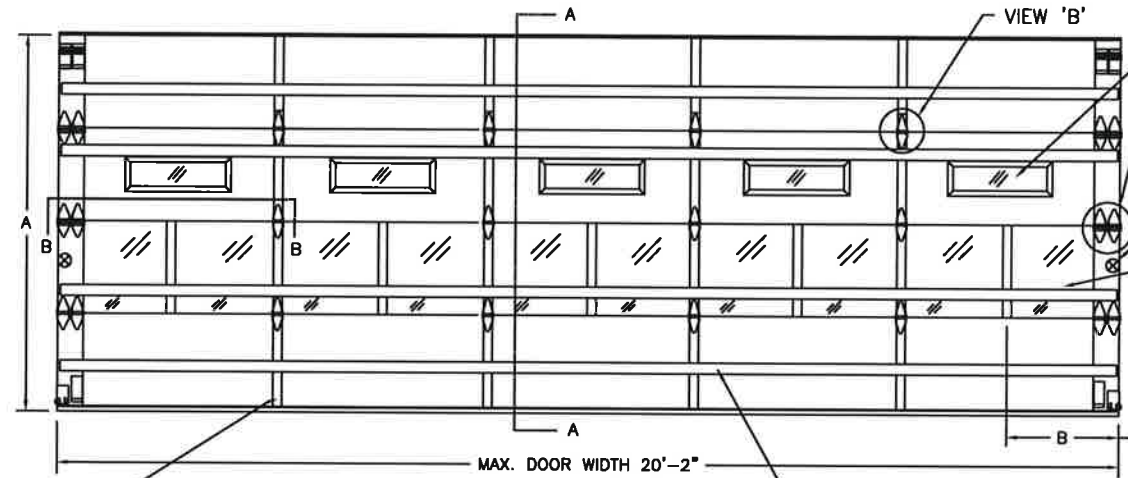


CLOPAY MODEL 3200, 3220
HOLMES MODEL 240

REVISIONS					
REV. NO.	ZONE	DATE	ECN NO.	APPVD.	DESCRIPTION
00	-	2/7/17	-	-	INITIAL RELEASE
01	-	02/2022	-	JDW	REVISED FOR TDI.

THIS PRODUCT COMPLIES WITH THE 2018 IBC/IRC.

OPTIONAL ALUMINUM FULL VISION WINDOW LITE SECTIONS AVAILABLE, SINGLE PANE OR INSULATED. ALL PANES ANNEALED GLASS OR STRONGER. SINGLE PANES 1/2" OR THICKER. INSULATED WINDOWS 1/2" THICK, CONSISTING OF (2) PANES 1/2" THICK. MAXIMUM DLO: 33" X 21-3/4". FULL VISION SECTIONS TO HAVE SAME REINFORCEMENT AS OTHER SECTIONS.



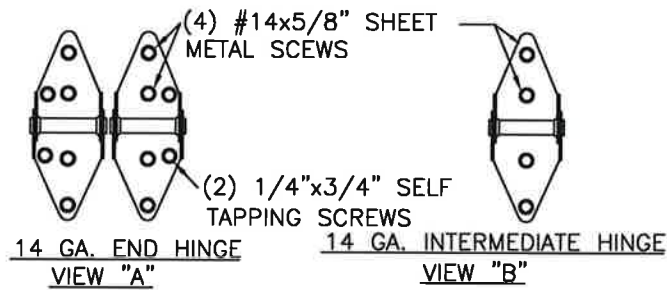
OPTIONAL SINGLE PANE OR INSULATED WINDOW LITES. ALL PANES ANNEALED GLASS OR STRONGER. SINGLE PANES 1/2" OR THICKER. INSULATED WINDOWS 1/2" THICK, CONSISTING OF (2) PANES 1/2" THICK. FRAMES SECURED WITH (10) PUSHTITE PAN #8-16 X 2" PHILLIPS HEAD SCREWS. (3) ON EACH HORIZONTAL EDGE, (2) ON EACH VERTICAL EDGE. MAXIMUM DLO: 21-3/8" X 5-1/2".

OPTIONAL ALUMINUM FULL VISION WINDOW LITE SECTIONS AVAILABLE, SINGLE PANE OR INSULATED. ALL PANES ANNEALED GLASS OR STRONGER. SINGLE PANES 1/2" OR THICKER. INSULATED WINDOWS 1/2" THICK, CONSISTING OF (2) PANES 1/2" THICK. MAXIMUM DLO: 33" X 21-3/4". FULL VISION SECTIONS TO HAVE SAME REINFORCEMENT AS OTHER SECTIONS.

NOTE: CENTER STILES ALWAYS 22" FROM CENTER TO CENTER. FOR ANY GIVEN DOOR WIDTH, DIMENSION B IS THE LEFTOVER DIMENSION ON BOTH ENDS OF THE DOOR. THIS DIMENSION WILL NOT BE GREATER THAN 33" OR LESS THAN 18".

(1) 20 GA. X2" GALV. STEEL BACKER PLATE AT EACH INTERMEDIATE HINGE LOCATION. BACKER PLATE ATTACHED WITH DOUBLE SIDED ACRYLIC ADHESIVE TO BACK OF DOOR. (STEEL SECTIONS ONLY)

ONE 4" T-STRUT PER SECTION. (SEE SECTION A-A FOR DETAILS)



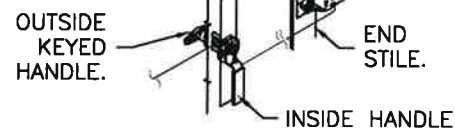
DOOR WIDTH	NUMBER OF INTERMEDIATE HINGES
UP TO 8'-0"	4
8'-3" THRU 10'-0"	5
10'-3" THRU 12'-0"	6
12'-3" THRU 14'-0"	7
14'-3" THRU 16'-0"	8
16'-3" THRU 18'-0"	9

DOOR HEIGHT 'A'	NUMBER OF SECTIONS
UP TO 8'-0"	4
8'-3" THRU 10'-0"	5
10'-3" THRU 12'-0"	6
12'-3" THRU 14'-0"	7
14'-3" THRU 16'-0"	8
16'-3" THRU 18'-0"	9

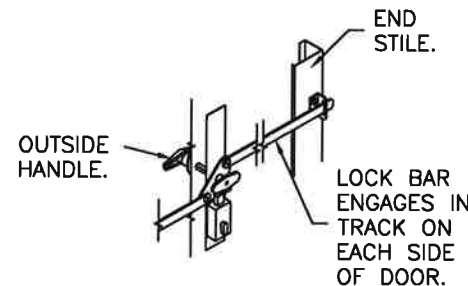
MAX. SECTION HEIGHT: 24"

SNAP LATCH ENGAGES ONTO VERTICAL TRACK. ONE SNAP LATCH ON EACH SIDE OF DOOR.

SLIDE BOLT LOCK ENGAGES INTO VERTICAL TRACK. ONE LOCK ON EACH SIDE OF DOOR.



OUTSIDE KEYED LOCK WITH SNAP LATCH LOCK OPTION.



OUTSIDE KEYED LOCK WITH LOCK BAR LOCKING.

STATE OF TEXAS
MARK WESTERFIELD, P.E.
FLORIDA P.E. #48495, NC-P.E. #23832, TEXAS P.E. #91613
5/31/2023
INSIDE SLIDE BOLT LOCK OPTION.

MARK WESTERFIELD, P.E.
FLORIDA P.E. #48495, NC-P.E. #23832,
TEXAS P.E. #91613

DESIGN LOADS: +25.0, -28.0 PSF
TEST LOADS: +37.5, -42.0 PSF

Unless Stated Otherwise
TOLERANCES are
.0 = ±.031
.00 = ±.015
.000 = ±.005
.0000 = ±.001
Degrees = ±1/2"

Unless Stated Otherwise
DIMENSIONS ARE IN INCHES.

Clopay CORPORATION
8585 Duke Boulevard
Mason, OH 45040 USA
Tel. No. 513-770-4800
Fax No. 513-770-4853

DESCRIPTION: MODEL 240/3200/3220 WINDLOAD 20'-2"

DRAWN BY: RJH	DATE: 2/7/17	SCALE: NTS	DWG. SIZE B
CHECKED BY: -	DATE: -	SHEET 1 OF 4	
DWG. NO.: 105198	VER: TDI		

MANUFACTURING PRODUCT CODE:
MPC: C-DSIE-1F447

PART NO.: N/A

CLOPAY WINDLOAD RATING
W4

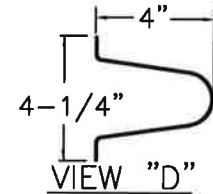
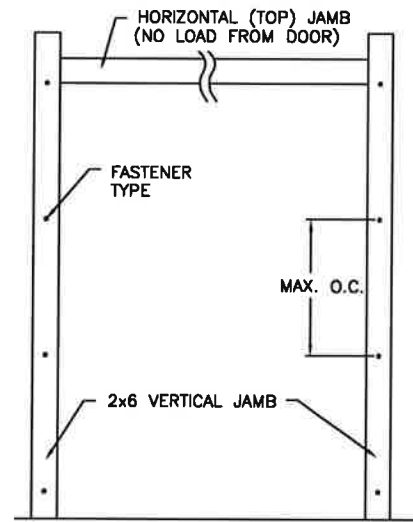
CLOPAY MODEL 3200, 3220
HOLMES MODEL 240, 240G

REVISIONS					
REV. NO.	ZONE	DATE	ECN NO.	APPVD.	DESCRIPTION
01	-	-	-	-	SEE REVISION HISTORY ON SHEET 1

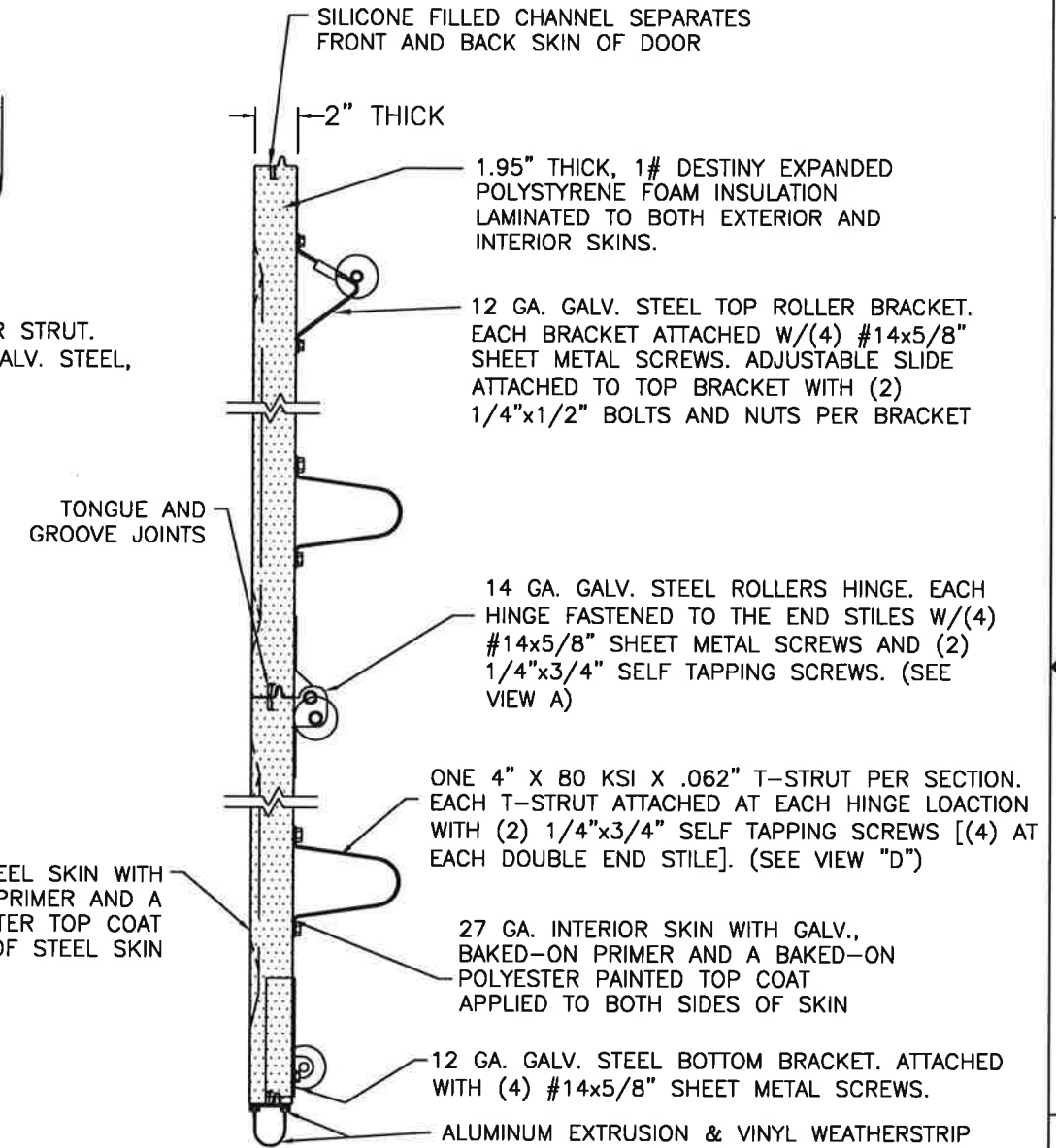
JAMB TO SUPPORTING STRUCTURE ATTACHMENT

- NOTES:
1. ALL THE LOAD FROM THE DOOR IS TRANSFERRED TO THE TRACK AND THEN FROM THE TRACK TO THE 2x6 VERTICAL SYP (GRADE #2 OR BETTER) JAMBS. NO LOAD FROM THE DOOR IS TRANSFERRED TO THE HORIZONTAL (TOP) JAMB.
 2. EACH VERTICAL JAMB SEES A MAXIMUM DESIGN LOAD OF +250 LB & -280 LB. PER LINEAR FOOT OF JAMB.
 3. ALL JAMB FASTENERS MAY BE (BUT ARE NOT REQUIRED TO BE) COUNTERSUNK TO PROVIDE A FLUSH MOUNTING SURFACE.
 4. A 1/3 STRESS INCREASE FOR WIND LOAD WAS NOT USED IN THE CALCULATION OF ALLOWABLE LOADS FOR ANCHORS AND FASTENERS FOR STEEL, CONCRETE AND MASONRY.

NOTE: 2x6 WOOD JAMBS ARE NOT REQUIRED WITH CONTINUOUS ANGLE MOUNT TRACK. HOWEVER, IF DESIRED ON STEEL JAMBS OR CONCRETE OR BLOCK WALLS, APPROVED FASTENERS AS DETAILED BELOW SHOULD BE INCREASED IN LENGTH BY 1-1/2" AND INSTALLED DIRECTLY THROUGH THE ANGLE AND 2x6 WOOD JAMBS INTO THE STEEL JAMBS OR CONCRETE OR BLOCK WALLS. ANCHORS CAN BE (BUT ARE NOT REQUIRED TO BE) COUNTERSUNK TO PROVIDE A FLUSH MOUNTING SURFACE. CONTINUOUS ANGLE TRACK CAN BE ANCHORED DIRECTLY TO GROUT REINFORCED BLOCK WALL OR 3,000 PSI MIN. CONCRETE COLUMN OR STEEL JAMBS.



4" TALL TAPER STRUT.
0.062" MIN. GALV. STEEL,
80 KSI. MIN.



SECTION A-A (SIDE VIEW)

FASTENER ATTACHMENT TO SUPPORTING STRUCTURE SCHEDULES

BUILDING TYPE	FASTENER TYPE	MAXIMUM ON-CENTER DISTANCE BETWEEN FASTENERS*	STEEL WASHERS REQUIRED?
HOLLOW BLOCK WALL	1/4" x 1-1/4" MIN. EMBED ULTRACON CONCRETE ANCHOR	6-1/2"	1" O.D.
GROUT FILLED BLOCK WALL	1/4" x 1-3/4" MIN. EMBED ULTRACON CONCRETE ANCHOR	11"	1" O.D.
2000 PSI MIN. CONCRETE	1/4" x 1" MIN. EMBED ULTRACON CONCRETE ANCHOR	9-1/2"	1" O.D.
2000 PSI MIN. CONCRETE	1/4" x 1" MIN. EMBED TAPCON CONCRETE ANCHOR	9"	1" O.D.
2000 PSI MIN. CONCRETE	3/8" x 1-3/4" MIN. EMBED WEJ-IT ANKR TITE SLEEVE ANCHOR	20"	INCLUDED
4000 PSI MIN. CONCRETE	3/8" x 1-3/4" MIN. EMBED WEJ-IT ANKR TITE SLEEVE ANCHOR	24"	INCLUDED
WOOD FRAME (SYP 0.55 SG)	1/2" x 3" LAG SCREW (ASTM A307, GRADE A) 1-5/8" EMBED INTO STRUCTURE	21-3/4"	1" O.D.
14GA STEEL (0.060" MIN.)	1/4"-14 x 1" ITW BUILDEX TEKS SELF-DRILLING FASTENER	9"	1" O.D.
12GA STEEL (0.105" MIN.)	1/4"-14 x 1" ITW BUILDEX TEKS SELF-DRILLING FASTENER	16"	1" O.D.
1/8" STEEL	1/4"-14 x 1" ITW BUILDEX TEKS SELF-DRILLING FASTENER	19"	1" O.D.

* FIRST (BOTTOM) ANCHOR STARTING AT NO MORE THAN HALF OF THE MAXIMUM ON-CENTER DISTANCE. HIGHEST ANCHOR INSTALLED AT LEAST AS HIGH AS THE DOOR OPENING.
CLOPAY DOES NOT SUPPLY JAMB ATTACHMENT FASTENERS.
MINIMUM DISTANCE BETWEEN CENTER OF ANCHOR AND EDGE OF CONCRETE BLOCK: 2-1/2", EXCLUDING STUCCO THICKNESS.

DESIGN LOADS: +25.0, -28.0 PSF
TEST LOADS: +37.5, -42.0 PSF

Unless Stated Otherwise
TOLERANCES are
.0 = ±.031
.00 = ±.015
.000 = ±.005
.0000 = ±.001
Degrees = ±1/2"

Glopay
CORPORATION
8585 Duke Boulevard
Mason, OH 45040 USA
Tel. No. 513-770-4800
Fax No. 513-770-4853

MANUFACTURING PRODUCT CODE:
MPC: C-DSIE-1F447

PART NO.: N/A

CLOPAY WINDLOAD RATING
W4

DESCRIPTION: MODEL 240/3200/3220 WINDLOAD 20'-2"

DRAWN BY: RJH DATE: 2/7/17 SCALE: NTS DWG. B

CHECKED BY: - DATE: - SHEET 2 OF 4

DWG. NO.: 105198 VER: TDI

STATE OF TEXAS
MARK WESTERFIELD
P.E. #1513
5/31/12
MARK WESTERFIELD ENGINEERING

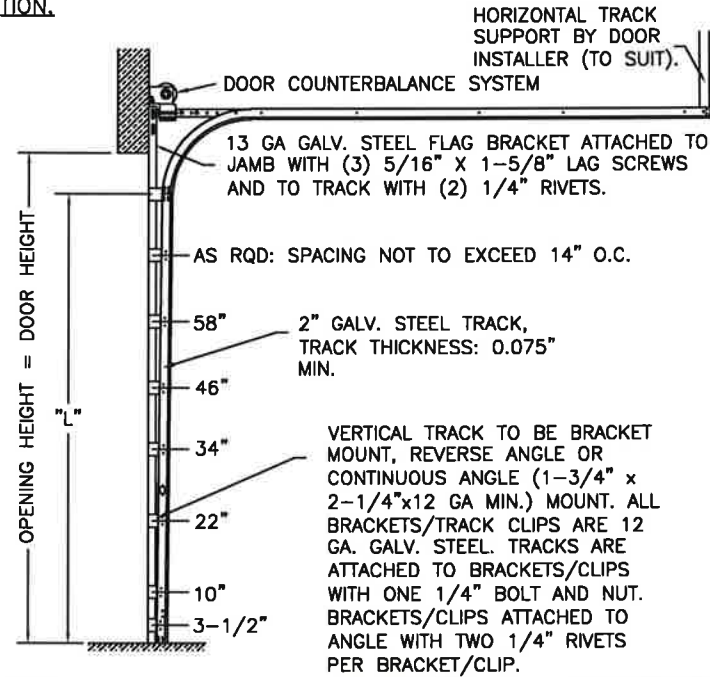
MARK WESTERFIELD, P.E.
FLORIDA P.E. #48495, NC P.E. #23832,
TEXAS P.E. #91513

CLOPAY MODEL 3200, 3220
HOLMES MODEL 240, 240G

REVISIONS					DESCRIPTION
REV. NO.	ZONE:	DATE:	ECN NO.	APPVD:	
01	-	-	-	-	SEE REVISION HISTORY ON SHEET 1

2" TRACK CONFIGURATION.

NOTE DOUBLE TRACK LOW HEADROOM, HI-LIFT TRACK, FOLLOW-THE-ROOF TRACK, AND VERTICAL LIFT TRACK ARE AVAILABLE OPTIONS. TRACK CONFIGURATION ABOVE THE DOOR OPENING DOES NOT AFFECT THE WIND LOAD RATING.



DOOR HEIGHT	"L"
6'-6"	70"
7'-0"	76"
7'-6"	82"
8'-0"	88"
8'-6"	94"
9'-0"	100"
9'-6"	106"
10'-0"	112"
10'-6"	118"
11'-0"	124"
11'-6"	130"
12'-0"	136"
12'-6"	142"
13'-0"	148"
13'-6"	154"
14'-0"	160"
14'-6"	166"
15'-0"	172"
15'-6"	178"
16'-0"	184"
16'-6"	190"
17'-0"	196"
17'-6"	202"
18'-0"	208"

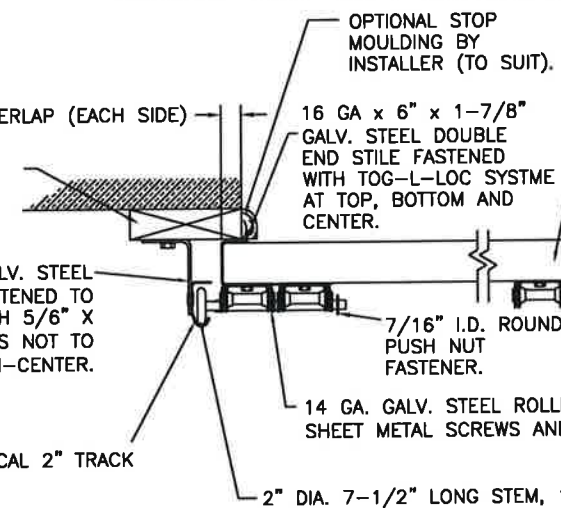
JAMB CONFIGURATION FOR DOORS WITH 2" TRACK.

2x6 SYP WOOD JAMB. REQUIRED FOR BRACKET MOUNT.

2-1/2" X 12 GA GALV. STEEL TRACK BRACKETS FASTENED TO WOOD JAMBS WITH 5/8" X 1-5/8" LAG SCREWS NOT TO EXCEED 14" ON-CENTER.

0.075" MIN. THICK VERTICAL 2" TRACK

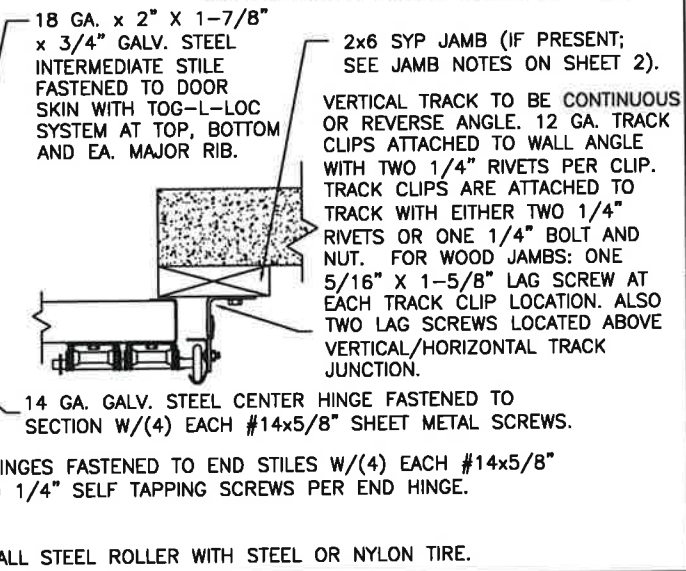
BRACKET MOUNT JAMB CONFIGURATION



SECTION C-C

PREPARATION OF JAMBS BY OTHERS.

ANGLE MOUNT JAMB CONFIGURATION



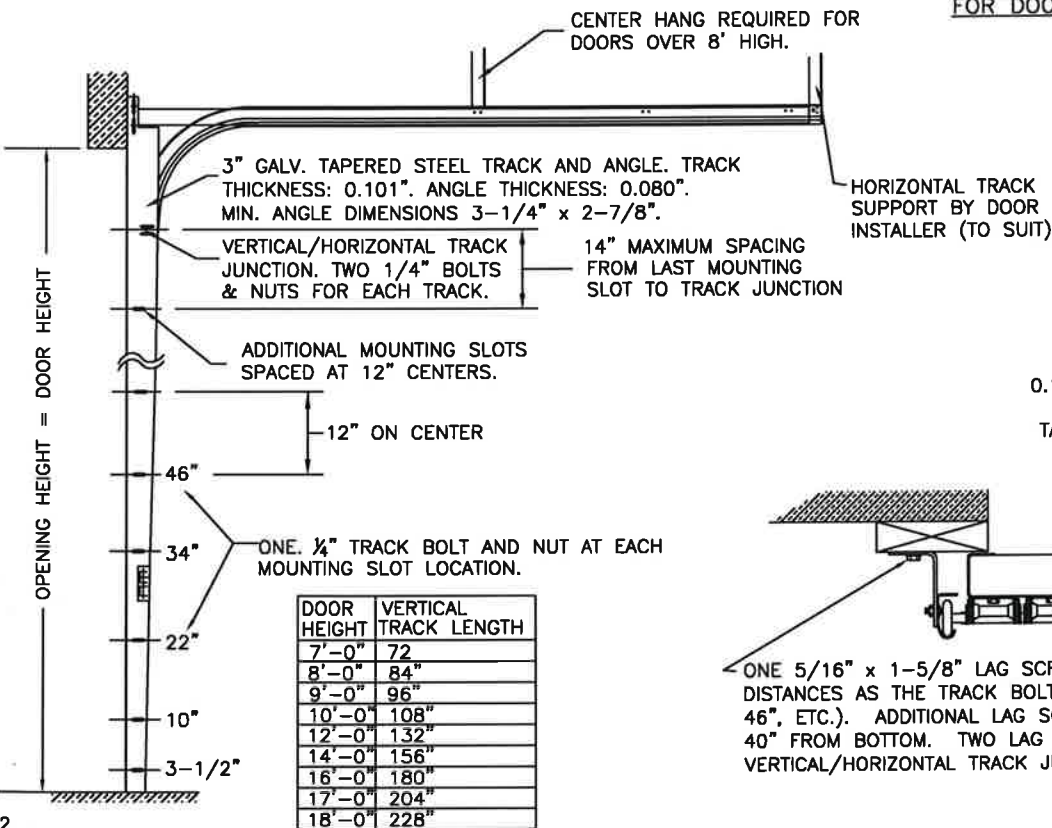
LHR BRACKET (2-1/2" x 5-3/4" x 12GA) ATTACHED WITH (2) 1/4" x 3/4" SELF TAPPING SCREWS. NOTE THAT LHR BRACKETS ARE ALSO USED WITH "DOUBLE END STILE" AS NOTED ON SHEET 2.

DOUBLE TRACK LOW HEADROOM OPTION
(AVAIL. FOR BOTH 2" AND 3" TRACK)

DOUBLE HORIZONTAL TRACK.

3" TRACK CONFIGURATION.

NOTE DOUBLE TRACK LOW HEADROOM, HI-LIFT TRACK, FOLLOW-THE-ROOF TRACK, AND VERTICAL LIFT TRACK ARE AVAILABLE OPTIONS. TRACK CONFIGURATION ABOVE THE DOOR OPENING DOES NOT AFFECT THE WIND LOAD RATING.



JAMB CONFIGURATION FOR DOORS WITH 3" TRACK.

2x6 SYP JAMB (IF PRESENT; SEE JAMB NOTES ON SHEET 2).

3-1/4" x 2-7/8" MIN. x 0.080" TAPERED ANGLE. SEE LAG BOLT MOUNTING AT TRACK CONFIGURATION BELOW.

0.101" THICK 3" GALV. STEEL TRACK FASTENED TO TAPERED ANGLE. TRACK ATTACHED TO TAPERED ANGLE WITH ONE 1/4"x5/8" BOLT & NUT AT EACH MOUNTING SLOT.

1" DOOR OVERLAP (EACH SIDE)

OPTIONAL STOP MOULDING BY DOOR INSTALLER (TO SUIT).

16 GA x 6" x 1-7/8" GALV. STEEL DOUBLE END STILE FASTENED WITH TOG-L-LOC SYSTEM AT TOP, BOTTOM AND CENTER.

18 GA. x 2" x 1-7/8" x 3/4" GALV. STEEL INTERMEDIATE STILE FASTENED TO DOOR SKIN WITH TOG-L-LOC SYSTEM AT TOP, BOTTOM AND EACH MAJOR RIB.

18 GA. GALV. STEEL CENTER HINGE FASTENED TO SECTION W/(4) EACH #14x5/8" SHEET METAL SCREWS.

14 GA. GALV. STEEL ROLLER HINGES FASTENED TO END STILES W/(4) EACH #14x5/8" SHEET METAL SCREWS AND (2) 1/4" SELF TAPPING SCREWS PER END HINGE.

3" DIA. 8-1/2" LONG STEM BALL BEARING STEEL ROLLER.

SECTION C-C

PREPARATION OF JAMBS BY OTHERS.

DESIGN LOADS: +25.0, -28.0 PSF
TEST LOADS: +37.5, -42.0 PSF

Unless Stated Otherwise TOLERANCES are
.0 = ±.031
.00 = ±.015
.000 = ±.005
.0000 = ±.001
Degrees = ±1/2°

Unless Stated Otherwise DIMENSIONS ARE IN INCHES.

Clopay CORPORATION

8585 Duke Boulevard
Mason, OH 45040 USA
Tel. No. 513-770-4800
Fax No. 513-770-4853

MANUFACTURING PRODUCT CODE:
MPC: C-DSIE-1F447

PART NO.: N/A

CLOPAY WINDLOAD RATING
W4

DESCRIPTION: MODEL 240/3200/3220 WINDLOAD 20'-2"

DRAWN BY: RJH

DATE: 2/7/17

SCALE: NTS

DWG. SIZE **B**

CHECKED BY: -

DATE: -

SHEET 3 OF 4

DWG. NO.: 105198

VER: TDI

STATE OF TEXAS
MARK WESTERFIELD
91513
5/31/22
REGISTERED PROFESSIONAL ENGINEER
FLORIDA P.E. #48495, NC P.E. #23832,
TEXAS P.E. #91513

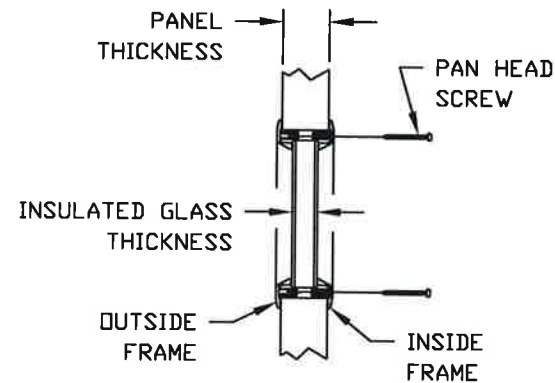
CLOPAY MODEL 3200, 3220
HOLMES MODEL 240, 240G

REVISIONS					
REV. NO.	ZONE:	DATE:	ECN NO.	APPVD:	DESCRIPTION
01	-	-	-	-	SEE REVISION HISTORY ON SHEET 1

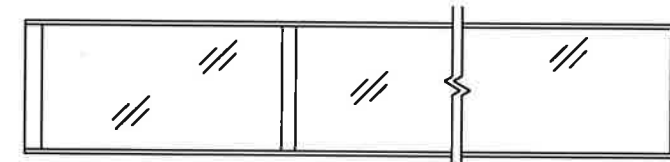
THE OPTIONAL GLAZING SHOWN ON THIS DRAWING MEETS THE WIND LOAD REQUIREMENTS OF THE FLORIDA BUILDING CODE OR INTERNATIONAL BUILDING CODE BUT DOES NOT MEET THE IMPACT RESISTANT REQUIREMENT FOR WINDBORNE DEBRIS REGIONS (REF. CHAPTER 16 FBC/IBC)

STANDARD ASSEMBLY CONSTRUCTION:
OPTIONAL LITES WITH DSB OR BETTER GLAZING AVAILABLE. OPTIONAL FULL VISION SECTIONS WITH DSB OR BETTER GLAZING AVAILABLE.
THE ENTIRE DOOR ASSEMBLY INSTALLED IN COMPLIANCE WITH THIS SECTION MEETS THE WIND LOAD REQUIREMENTS OF THE FLORIDA BUILDING CODE OR INTERNATIONAL BUILDING CODE BUT DOES NOT MEET THE IMPACT RESISTANT REQUIREMENT FOR WINDBORNE DEBRIS REGIONS (REF. CHAPTER 16 FBC/IBC).

**SECTION B-B
(STANDARD GLAZING OPTION)**



**NON-IMPACT-RESISTANT
FULL VISION SECTION OPTION**



OPTIONAL ALUMINUM FULL VISION WINDOW LITE SECTIONS AVAILABLE (1/8" DSB, 1/8" ACRYLIC, 1/4" WIRE OR BETTER). FULL VISION SECTIONS. OPTIONAL ACRYLIC IS PLASKOLITE OPTIX, AN APPROVED CC2 PLASTIC IN COMPLIANCE WITH IBC/FBC 2606.

STANDARD ASSEMBLY DETAILS

Mark Westerfield 5/31/22

 MARK WESTERFIELD, P.E.
 FLORIDA P.E. #48495, NC P.E. #23832,
 TEXAS P.E. #91513

DESIGN LOADS: +25.0, -28.0 PSF
TEST LOADS: +37.5, -42.0 PSF

Unless Stated Otherwise
TOLERANCES are
 .0 = ±.031
 .00 = ±.015
 .000 = ±.005
 .0000 = ±.001
 Degrees = ±1/2"

Unless Stated Otherwise
DIMENSIONS ARE IN INCHES.

Glopay CORPORATION
 8585 Duke Boulevard
 Mason, OH 45040 USA
 Tel. No. 513-770-4800
 Fax No. 513-770-4853

DESCRIPTION: MODEL 240/3200/3220 WINDLOAD 20'-2"

DRAWN BY: RJH	DATE: 2/7/17	SCALE: NTS	DWG. SIZE: B
CHECKED BY: -	DATE: -	SHEET 4 OF 4	
DWG. NO.: 105198	VER: TDI		

MANUFACTURING PRODUCT CODE:
MPC: C-DSIE-1F447

PART NO.: N/A

CLOPAY WINDLOAD RATING
W4