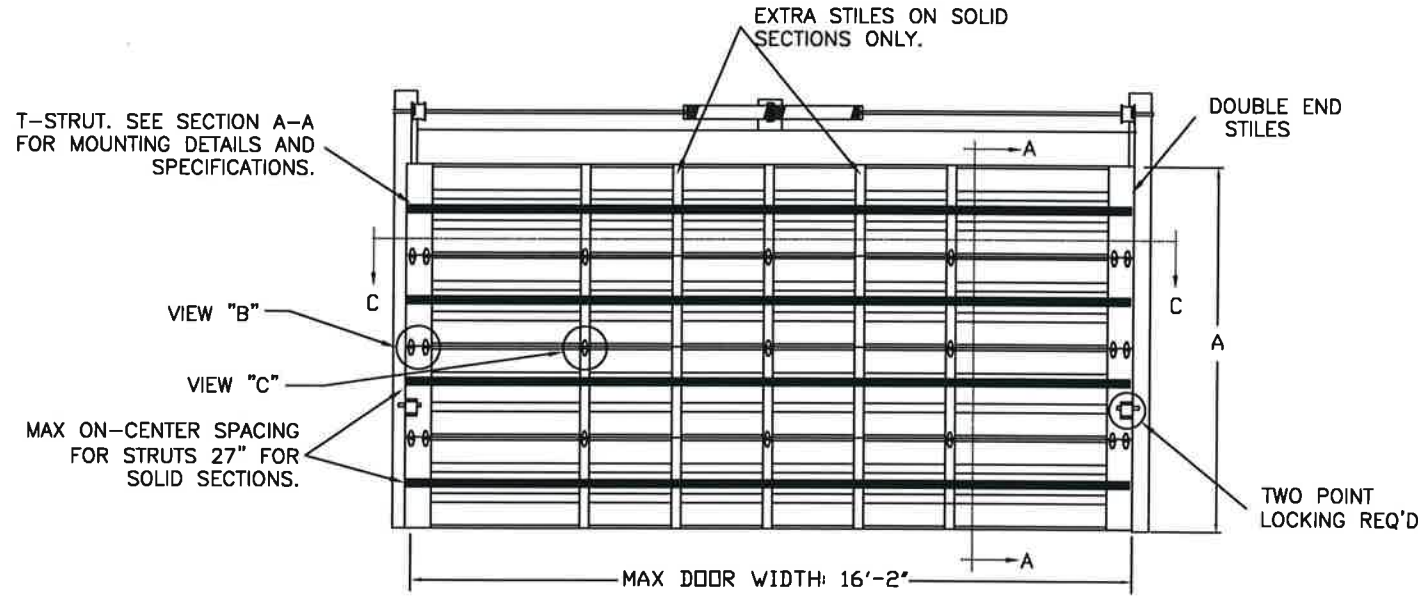


MODELS AVAILABLE (CLOPAY/ HOLMES/ IDEAL)
 MODELS 524, 520/ 224/ C4ST, C0ST
 INSULATED MODELS 524S, 520S, 524V/ 224S/ C4SS, C0SS, C4SV

REVISIONS					
REV. NO.	ZONE:	DATE:	ECN NO.	APPVD:	DESCRIPTION
00	-	1/31/17	-	-	INITIAL RELEASE
01	-	02/2022	-	JDW	REVISED FOR TDI.

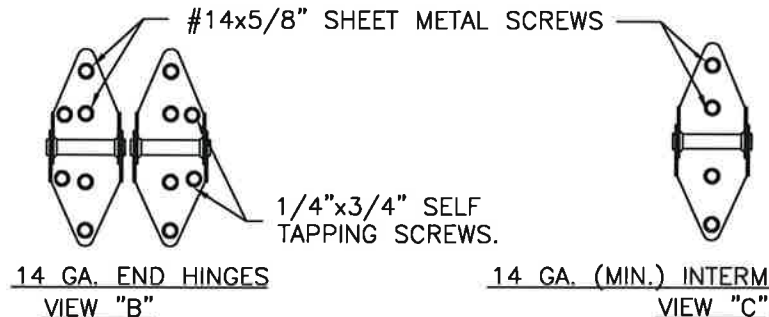
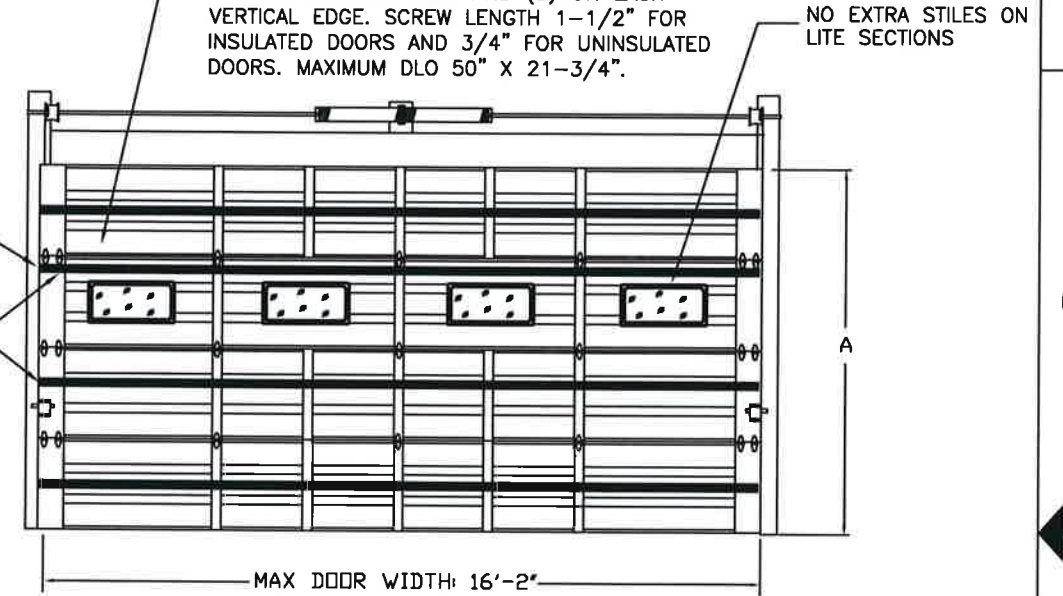
THIS PRODUCT COMPLIES WITH THE 2018 IBC/IRC.

OPTIONAL SINGLE PANE OR INSULATED WINDOW LITES. ALL PANES ANNEALED GLASS OR STRONGER. SINGLE PANES 1/8" OR THICKER. INSULATED WINDOWS 1/2" THICK, CONSISTING OF (2) PANES 1/8" THICK. FRAMES SECURED WITH QTY. (16) #8-11 CROSS RECESSED PAN HEAD, TYPE A TAPPING SCREW WITH (5) SCREWS ON EACH HORIZONTAL EDGE AND (3) ON EACH VERTICAL EDGE. SCREW LENGTH 1-1/2" FOR INSULATED DOORS AND 3/4" FOR UNINSULATED DOORS. MAXIMUM DLO 50" X 21-3/4".



T-STROUT ON LITE SECTION MOUNTED OVER BOTTOM FASTENER OF HINGE LEAF.

FOR LITE SECTIONS THE STRUT HAS A MAX ON-CENTER SPACING OF 30" TO THE STRUT ON THE SECTION BELOW IT.

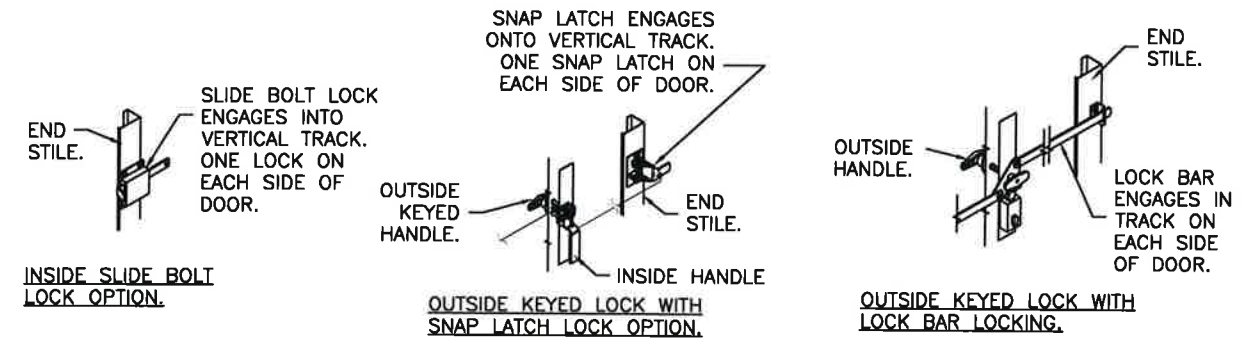


DOOR WIDTH	NUMBER OF CENTER STILES/ HINGES	NUMBER OF EXTRA STILES
12'-3" THRU 13'-2"	2	1
13'-3" THRU 16'-2"	3	2

* EXTRA STILES FOR SOLID SECTIONS ONLY.

DOOR HEIGHT 'A'	NUMBER OF SECTIONS
UP TO 8'-0"	4
8'-3" THRU 10'-0"	5
10'-3" THRU 12'-0"	6
12'-3" THRU 14'-0"	7
14'-3" THRU 16'-0"	8
16'-3" THRU 18'-0"	9

MAX. SECTION HEIGHT: 24"



DESIGN LOADS: +32 & -32 P.S.F.
 TEST LOADS +48 & -48 P.S.F.

Unless Stated Otherwise TOLERANCES are
 .0 = ±.031
 .00 = ±.015
 .000 = ±.005
 .0000 = ±.001
 Degrees = ±1/2"

Clopay CORPORATION
 8555 ESTERLINE ROAD
 MASON, OH 45040 USA
 Tel. No. 513-770-4800
 Fax 513-770-4888

MANUFACTURING PRODUCT CODE:
 MPC: C-PAN-1E448

PART NO.: N/A

WINDLOAD RATING
 W5

DESCRIPTION: COMMERCIAL RIBBED DOOR, +/- 32 PSF DESIGN LOAD

DRAWN BY: RJH DATE: 1/31/17 SCALE: NTS DWG. SIZE B

CHECKED BY: DATE: SHEET 1 OF 4 VER: TDI

MARK WESTERFIELD, P.E.
 FLORIDA P.E. #48495, NC P.E. #23832,
 TEXAS P.E. #91513

MODELS AVAILABLE (CLOPAY/ HOLMES/ IDEAL)

MODELS 524, 520/ 224/ C4ST, COST
INSULATED MODELS 524S, 520S, 524V/ 224S/ C4SS, COSS, C4SV

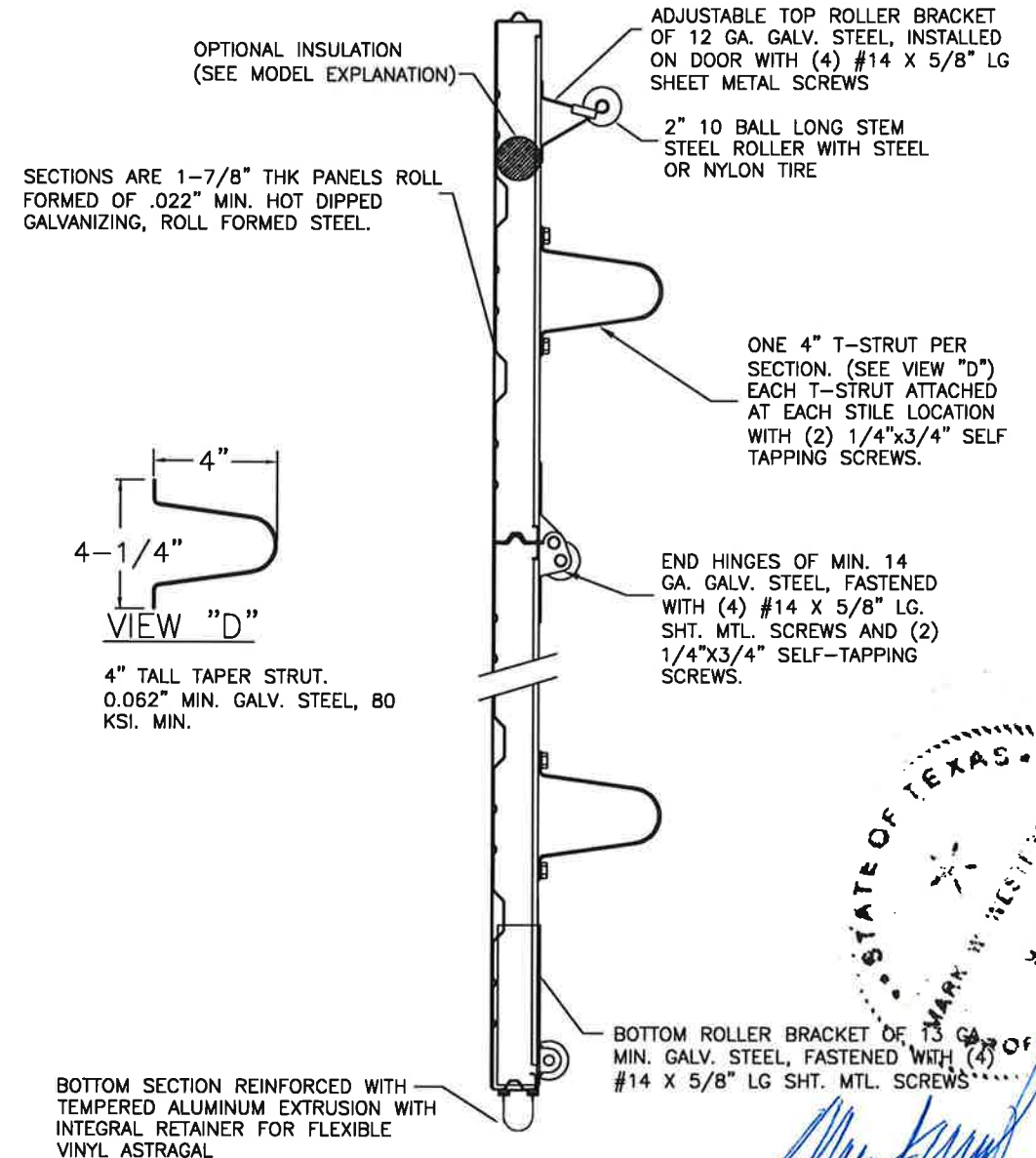
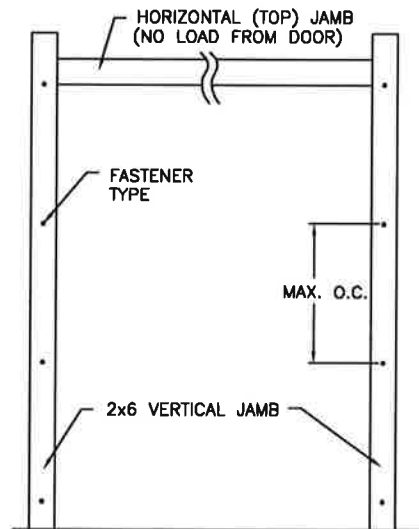
REVISIONS					
REV. NO.	ZONE	DATE	ECN NO.	APPVD	DESCRIPTION
01	-	-	-	-	SEE REVISION HISTORY ON SHEET 1

JAMB TO SUPPORTING STRUCTURE ATTACHMENT

NOTES:

1. ALL THE LOAD FROM THE DOOR IS TRANSFERRED TO THE TRACK AND THEN FROM THE TRACK TO THE 2x6 VERTICAL SYP (GRADE #2 OR BETTER) JAMBS. NO LOAD FROM THE DOOR IS TRANSFERRED TO THE HORIZONTAL (TOP) JAMB.
2. EACH VERTICAL JAMB SEES A MAXIMUM DESIGN LOAD OF +256 LB & -256 LB. PER LINEAR FOOT OF JAMB.
3. ALL JAMB FASTENERS MAY BE (BUT ARE NOT REQUIRED TO BE) COUNTERSUNK TO PROVIDE A FLUSH MOUNTING SURFACE.
4. A 1/3 STRESS INCREASE FOR WIND LOAD WAS NOT USED IN THE CALCULATION OF ALLOWABLE LOADS FOR ANCHORS AND FASTENERS FOR STEEL, CONCRETE AND MASONRY.

NOTE: 2x6 WOOD JAMBS ARE NOT REQUIRED WITH CONTINUOUS ANGLE MOUNT TRACK. HOWEVER, IF DESIRED ON STEEL JAMBS OR CONCRETE OR BLOCK WALLS, APPROVED FASTENERS AS DETAILED BELOW SHOULD BE INCREASED IN LENGTH BY 1-1/2" AND INSTALLED DIRECTLY THROUGH THE ANGLE AND 2x6 WOOD JAMBS INTO THE STEEL JAMBS OR CONCRETE OR BLOCK WALLS. ANCHORS CAN BE (BUT ARE NOT REQUIRED TO BE) COUNTERSUNK TO PROVIDE A FLUSH MOUNTING SURFACE. CONTINUOUS ANGLE TRACK CAN BE ANCHORED DIRECTLY TO GROUT REINFORCED BLOCK WALL OR 3,000 PSI MIN. CONCRETE COLUMN OR STEEL JAMBS.



FASTENER ATTACHMENT TO SUPPORTING STRUCTURE SCHEDULES

BUILDING TYPE	FASTENER TYPE	MAXIMUM ON-CENTER DISTANCE BETWEEN FASTENERS*	STEEL WASHERS REQUIRED?
HOLLOW BLOCK WALL	1/4" x 1-1/4" MIN. EMBED ULTRACON CONCRETE ANCHOR	6-1/2"	1" O.D.
GROUT FILLED BLOCK WALL	1/4" x 1-3/4" MIN. EMBED ULTRACON CONCRETE ANCHOR	10-3/4"	1" O.D.
2000 PSI MIN. CONCRETE	1/4" x 1" MIN. EMBED ULTRACON CONCRETE ANCHOR	9-1/4"	1" O.D.
2000 PSI MIN. CONCRETE	1/4" x 1" MIN. EMBED TAPCON CONCRETE ANCHOR	8-3/4"	1" O.D.
2000 PSI MIN. CONCRETE	3/8" x 1-3/4" MIN. EMBED WEJ-IT ANKR TITE SLEEVE ANCHOR	19-1/2"	INCLUDED
4000 PSI MIN. CONCRETE	3/8" x 1-3/4" MIN. EMBED WEJ-IT ANKR TITE SLEEVE ANCHOR	24"	INCLUDED
WOOD FRAME (SYP 0.55 SG)	1/2" x 3" LAG SCREW (ASTM A307, GRADE A) 1-5/8" EMBED INTO STRUCTURE	21"	1" O.D.
14GA STEEL (0.060" MIN.)	1/4"-14 x 1" ITW BUILDEX TEKS SELF-DRILLING FASTENER	9"	1" O.D.
12GA STEEL (0.105" MIN.)	1/4"-14 x 1" ITW BUILDEX TEKS SELF-DRILLING FASTENER	15-1/2"	1" O.D.
1/8" STEEL	1/4"-14 x 1" ITW BUILDEX TEKS SELF-DRILLING FASTENER	18-1/2"	1" O.D.

* FIRST (BOTTOM) ANCHOR STARTING AT NO MORE THAN HALF OF THE MAXIMUM ON-CENTER DISTANCE. HIGHEST ANCHOR INSTALLED AT LEAST AS HIGH AS THE DOOR OPENING.
CLOPAY DOES NOT SUPPLY JAMB ATTACHMENT FASTENERS.
MINIMUM DISTANCE BETWEEN CENTER OF ANCHOR AND EDGE OF CONCRETE BLOCK: 2-1/2", EXCLUDING STUCCO THICKNESS.

STATE OF TEXAS
MARK WESTERFIELD
5/31/22

MANUFACTURING PRODUCT CODE:
MPC: C-PAN-1E448
PART NO.: N/A
WINDLOAD RATING
W5

DESIGN LOADS: +32 & -32 P.S.F.
TEST LOADS +48 & -48 P.S.F.

Unless Stated Otherwise
TOLERANCES are
.0 = ±.031
.00 = ±.015
.000 = ±.005
.0000 = ±.001
Degrees = ±1/2"

8585 Duke Boulevard
Mason, OH 45040 USA
Tel. No. 513-770-4800
Fax No. 513-770-4853

DESCRIPTION: COMMERCIAL RIBBED DOOR, +/- 32 PSF DESIGN LOAD
DRAWN BY: RJH DATE: 1/31/17 SCALE: NTS DWG. SIZE B
CHECKED BY: - DATE: - SHEET 2 OF 4
DWG. NO.: 105033 VER: TDI

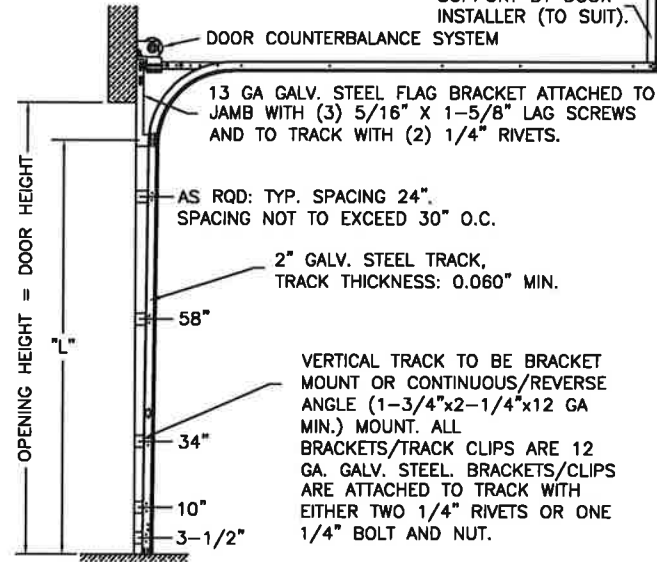
MARK WESTERFIELD, P.E.
FLORIDA P.E. #48495, NC P.E. #23832,
TEXAS P.E. #91513

MODELS AVAILABLE (CLOPAY/ HOLMES/ IDEAL)
 MODELS 524, 520/ 224/ C4ST, C0ST
 INSULATED MODELS 524S, 520S, 524V/ 224S/ C4SS, C0SS, C4SV

REVISIONS					
REV. NO.	ZONE	DATE	ECN NO.	APPVD	DESCRIPTION
01	-	-	-	-	SEE REVISION HISTORY ON SHEET 1

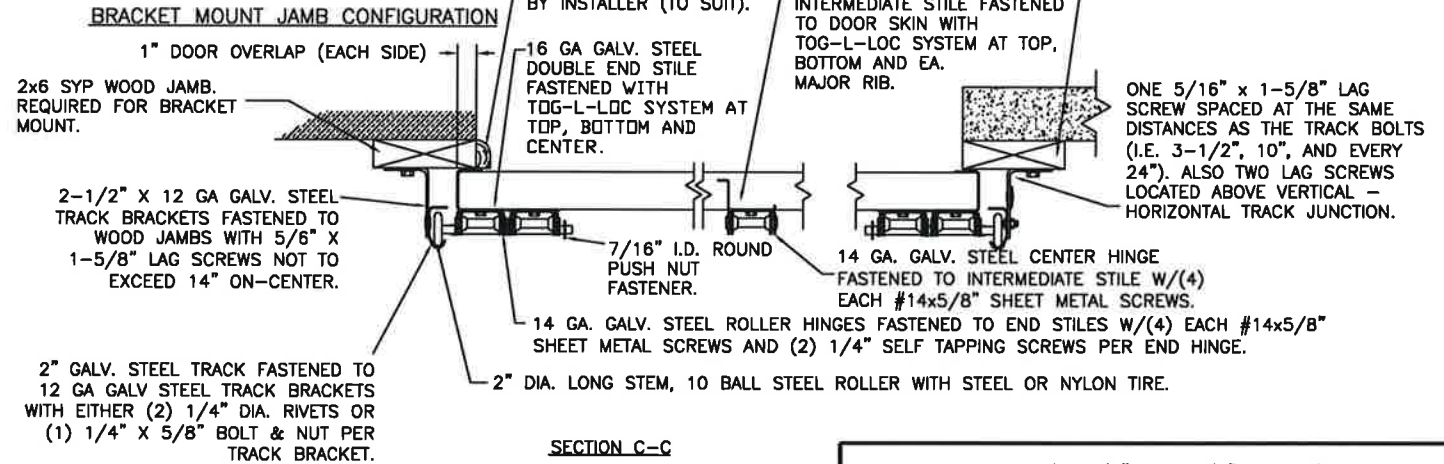
2" TRACK CONFIGURATION.

NOTE DOUBLE TRACK LOW HEADROOM, HI-LIFT TRACK, FOLLOW-THE-ROOF TRACK, AND VERTICAL LIFT TRACK ARE AVAILABLE OPTIONS. TRACK CONFIGURATION ABOVE THE DOOR OPENING DOES NOT AFFECT THE WIND LOAD RATING.



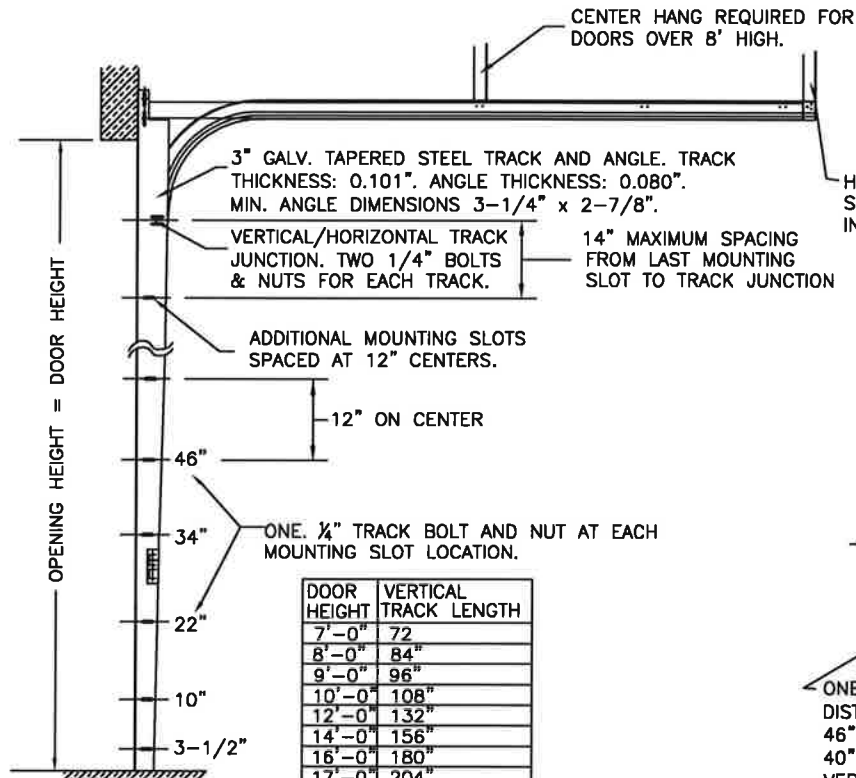
DOOR HEIGHT "L"	"L"
6'-6"	70"
7'-0"	76"
7'-6"	82"
8'-0"	88"
8'-6"	94"
9'-0"	100"
9'-6"	106"
10'-0"	112"
10'-6"	118"
11'-0"	124"
11'-6"	130"
12'-0"	136"
12'-6"	142"
13'-0"	148"
13'-6"	154"
14'-0"	160"
14'-6"	166"
15'-0"	172"
15'-6"	178"
16'-0"	184"
16'-6"	190"
17'-0"	196"
17'-6"	202"
18'-0"	208"

JAMB CONFIGURATION FOR 2" TRACK.



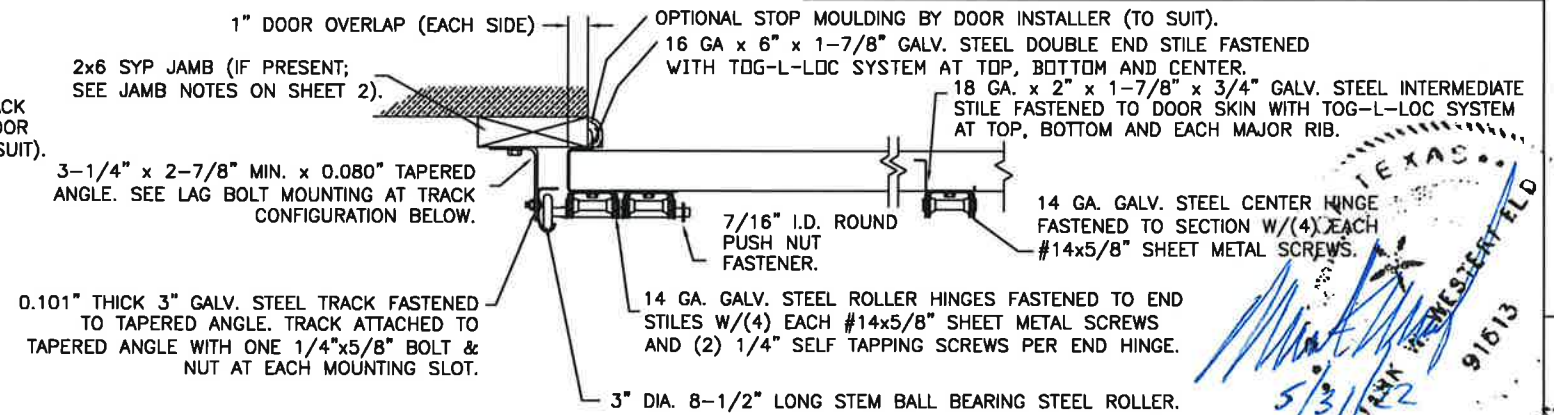
3" TRACK CONFIGURATION.

NOTE DOUBLE TRACK LOW HEADROOM, HI-LIFT TRACK, FOLLOW-THE-ROOF TRACK, AND VERTICAL LIFT TRACK ARE AVAILABLE OPTIONS. TRACK CONFIGURATION ABOVE THE DOOR OPENING DOES NOT AFFECT THE WIND LOAD RATING.



DOOR HEIGHT	VERTICAL TRACK LENGTH
7'-0"	72"
8'-0"	84"
9'-0"	96"
10'-0"	108"
12'-0"	132"
14'-0"	156"
16'-0"	180"
17'-0"	204"
18'-0"	228"

JAMB CONFIGURATION FOR DOORS WITH 3" TRACK.



ONE 5/16" X 1-5/8" LAG SCREW SPACED AT THE SAME DISTANCES AS THE TRACK BOLTS (I.E. 3-1/2", 10", 22", 34", 46", ETC.). ADDITIONAL LAG SCREWS LOCATED AT 16", 28", & 40" FROM BOTTOM. TWO LAG SCREWS ALSO LOCATED ABOVE VERTICAL/HORIZONTAL TRACK JUNCTION.

DESIGN LOADS: +32 & -32 P.S.F.
 TEST LOADS +48 & -48 P.S.F.

Unless Stated Otherwise TOLERANCES are
 .0 = ±.031
 .00 = ±.015
 .000 = ±.005
 .0000 = ±.001
 Degrees = ±1/2"

Glopay CORPORATION

8585 Duke Boulevard
 Mason, OH 45040 USA
 Tel. No. 513-770-4800
 Fax No. 513-770-4853

MANUFACTURING PRODUCT CODE:
 MPC: C-PAN-1E-448

PART NO.: N/A

WINDLOAD RATING
 W5

DESCRIPTION: COMMERCIAL RIBBED DOOR, +/- 32 PSF DESIGN LOAD

DRAWN BY: RJH DATE: 1/31/17 SCALE: NTS DWG. SIZE B
 CHECKED BY: - DATE: - SHEET 3 OF 4

DWG. NO.: 105033 VER: TDI

MARK WESTERFIELD, P.E.
 FLORIDA P.E. #48495, NC P.E. #23832,
 TEXAS P.E. #91513



4 | 3 | 2 | 1

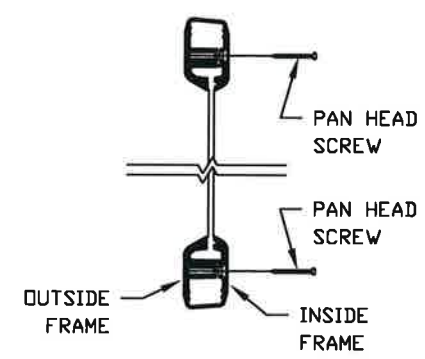
MODELS AVAILABLE (CLOPAY/ HOLMES/ IDEAL)
 MODELS 524, 520/ 224/ C4ST, C0ST
 INSULATED MODELS 524S, 520S, 524V/ 224S/ C4SS, C0SS, C4SV

REVISIONS					
REV. NO.	ZONE	DATE	ECN NO.	APPVD.	DESCRIPTION
01	-	-	-	-	SEE REVISION HISTORY ON SHEET 1

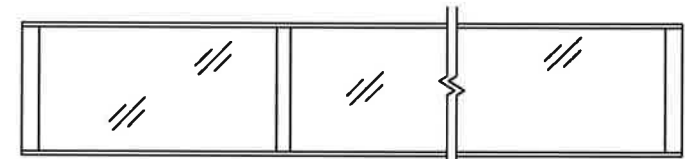
THE OPTIONAL GLAZING SHOWN ON THIS DRAWING MEETS THE WIND LOAD REQUIREMENTS OF THE FLORIDA BUILDING CODE OR INTERNATIONAL BUILDING CODE BUT DOES NOT MEET THE IMPACT RESISTANT REQUIREMENT FOR WINDBORNE DEBRIS REGIONS (REF. CHAPTER 16 FBC/IBC)

STANDARD ASSEMBLY CONSTRUCTION:
 OPTIONAL LITES WITH DSB OR BETTER GLAZING AVAILABLE. OPTIONAL FULL VISION SECTIONS WITH DSB OR BETTER GLAZING AVAILABLE.
 THE ENTIRE DOOR ASSEMBLY INSTALLED IN COMPLIANCE WITH THIS SECTION MEETS THE WIND LOAD REQUIREMENTS OF THE FLORIDA BUILDING CODE OR INTERNATIONAL BUILDING CODE BUT DOES NOT MEET THE IMPACT RESISTANT REQUIREMENT FOR WINDBORNE DEBRIS REGIONS (REF. CHAPTER 16 FBC/IBC).

**SECTION B-B
 (NON-IMPACT-RESISTANT
 GLAZING OPTION)**

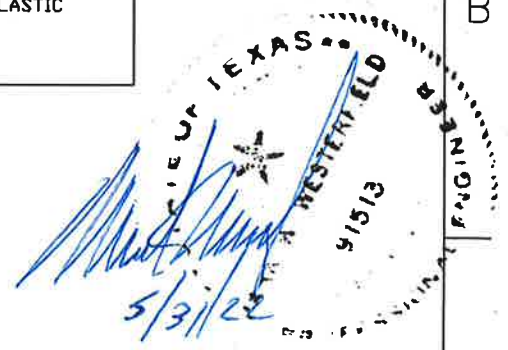


**NON-IMPACT-RESISTANT
 FULL VISION SECTION OPTION**



OPTIONAL ALUMINUM FULL VISION WINDOW LITE SECTIONS AVAILABLE, SINGLE PANE OR INSULATED. ALL PANES ANNEALED GLASS OR STRONGER. SINGLE PANES 1/8" OR THICKER. INSULATED WINDOWS 1/2" THICK, CONSISTING OF (2) PANES 1/8" THICK. FULL VISION SECTIONS TO HAVE 2" X 2" X 1/4" L-ANGLE HORIZONTAL REINFORCEMENT. L-ANGLES ATTACHED TO THE REINFORCING RIB WITH 4" X 6" OFFSET PLATES AT EVERY HINGE LOCATION AND THE CENTER OF EACH PANEL WITH (2) 1/4" X 5/8" HEX BOLTS AND NUTS. OPTIONAL ACRYLIC IS PLASKOLITE OPTIX, AN APPROVED CC2 PLASTIC IN COMPLIANCE WITH IBC/FBC 2606.

STANDARD ASSEMBLY DETAILS



MANUFACTURING PRODUCT CODE:
 MPC: C-PAN-1E448
 PART NO.: N/A

WINDLOAD RATING
 W5

Unless Stated Otherwise
 TOLERANCES are
 .0 = ±.031
 .00 = ±.015
 .000 = ±.005
 .0000 = ±.001
 Degrees = ± 1/2'
 Unless Stated Otherwise
 DIMENSIONS ARE IN INCHES.

Clopay CORPORATION
 8585 Duke Boulevard
 Mason, OH 45040 USA
 Tel. No. 513-770-4800
 Fax No. 513-770-4853

DESCRIPTION: COMMERCIAL RIBBED DOOR, +/- 32 PSF DESIGN LOAD
 DRAWN BY: RJH DATE: 1/31/17 SCALE: NTS DWG. SIZE B
 CHECKED BY: - DATE: - SHEET 4 OF 4
 DWG. NO.: 105033 VER: TDI

MARK WESTERFIELD, P.E.
 FLORIDA P.E. #48495, NC P.E. #23832,
 TEXAS P.E. #91513

4 | 3 | 2 | 1