

MODELS AVAILABLE (CLOPAY/ HOLMES/ IDEAL)

MODELS 524, 520/ 224/ C4ST, COST  
INSULATED MODELS 524S, 520S, 524V/ 224S/ C4SS, COSS, C4SV

MAX 8'-2" WIDE 18'-0" HIGH

THIS PRODUCT COMPLIES WITH THE 2018 IBC/IRC.

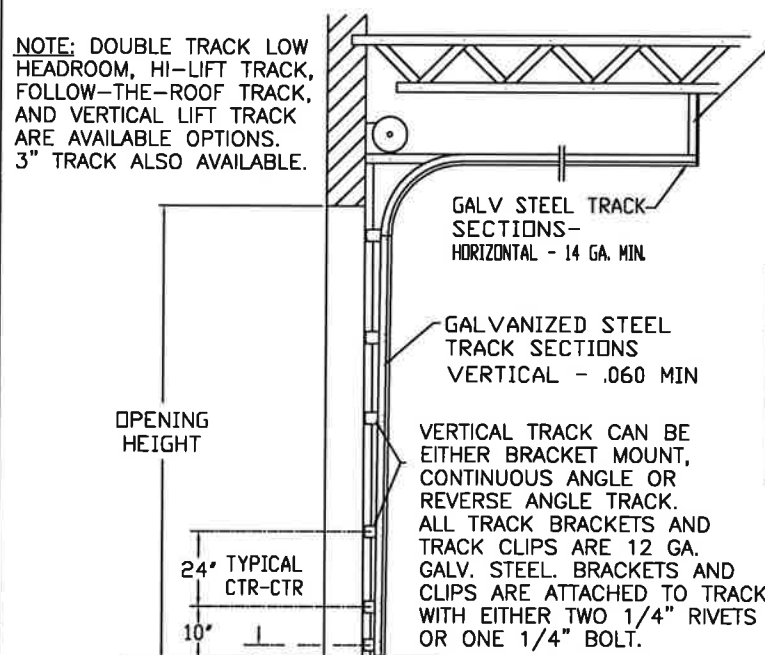
THE OPTIONAL GLAZING SHOWN ON THIS DRAWING MEETS THE WIND LOAD REQUIREMENTS OF THE FLORIDA BUILDING CODE OR INTERNATIONAL BUILDING CODE BUT DOES NOT MEET THE IMPACT RESISTANT REQUIREMENT FOR WINDBORNE DEBRIS REGIONS (REF. CHAPTER 16 FBC/IBC)

REVISIONS

REV. NO.	ZONE:	DATE:	ECN NO.	APPVD:	DESCRIPTION
11	-	11/2008	-	-	ADDED MPC; UPDATED JAMB ATTACHMENT.
12	-	02/2012	-	-	UPDATED WINDCODE CHART.
13	-	08/2012	-	-	REVISED FOR TDI.
14	-	06/2013	-	-	REMOVED ACRYLIC AND WIRE GLAZING. SPECIFIED GLAZING DIMENSIONS.
15	-	08/2016	-	-	REMOVED WIND SPEED TABLES.
16	-	02/2022	-	-	REVISED FOR TDI.

HORIZONTAL TRACK END HANGER BRACKET (SUPPLIED BY DOOR INSTALLER) CLOSES ROLLER CHANNEL. INTERMEDIATE HANGER REQUIRED FOR DOORS IF HORIZONTAL TRACK DEFLECTION EXCEEDS 1/240TH OF THE DOOR HEIGHT

NOTE: DOUBLE TRACK LOW HEADROOM, HI-LIFT TRACK, FOLLOW-THE-ROOF TRACK, AND VERTICAL LIFT TRACK ARE AVAILABLE OPTIONS. 3" TRACK ALSO AVAILABLE.



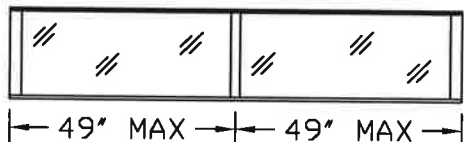
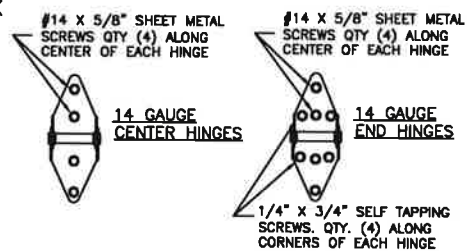
GALV STEEL TRACK SECTIONS- HORIZONTAL - 14 GA. MIN.

GALVANIZED STEEL TRACK SECTIONS VERTICAL - .060 MIN

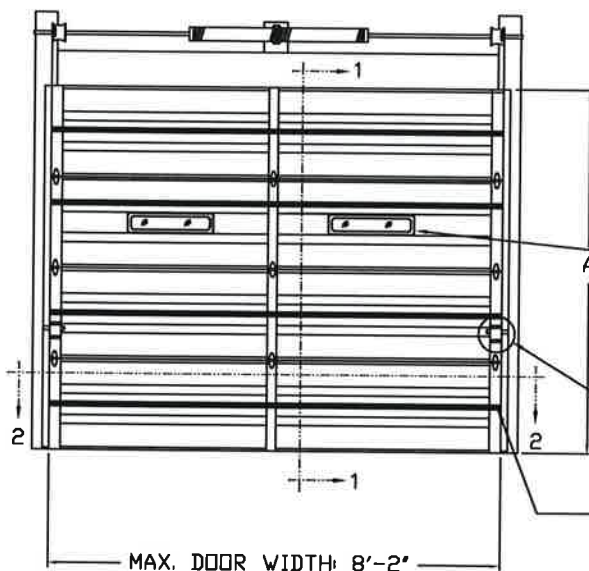
VERTICAL TRACK CAN BE EITHER BRACKET MOUNT, CONTINUOUS ANGLE OR REVERSE ANGLE TRACK. ALL TRACK BRACKETS AND TRACK CLIPS ARE 12 GA. GALV. STEEL. BRACKETS AND CLIPS ARE ATTACHED TO TRACK WITH EITHER TWO 1/4" RIVETS OR ONE 1/4" BOLT.

DOOR HEIGHT 'A'	NUMBER OF SECTIONS
UP TO 8'-0"	4
8'-3" THRU 10'-0"	5
10'-3" THRU 12'-0"	6
12'-3" THRU 14'-0"	7
14'-3" THRU 16'-0"	8
16'-3" THRU 18'-0"	9

MAX. SECTION HEIGHT: 24"



OPTIONAL ALUMINUM FULL VISION WINDOW LITE SECTIONS AVAILABLE, SINGLE PANE OR INSULATED. ALL PANES ANNEALED GLASS OR STRONGER. SINGLE PANES 3/8" OR THICKER. INSULATED WINDOWS 1/2" THICK, CONSISTING OF (2) PANES 3/8" THICK. FULL VISION SECTIONS TO HAVE 2" X 2" X 1/8" L-ANGLE HORIZONTAL REINFORCEMENT, ATTACHED TO THE REINFORCING RIB WITH (2) 1/4"-20 X 5/8" HEX HEAD BOLTS AND NUTS AT EVERY HINGE LOCATION. MAXIMUM DLO: 49-3/4" X 21-3/4".



SECTIONS ARE 1-7/8" THK PANELS ROLL FORMED OF .019" MIN. HOT DIPPED GALVANIZING, ROLL FORMED STEEL.

OPTIONAL INSULATION (SEE MODEL EXPLANATION)

OPTIONAL SINGLE PANE OR INSULATED WINDOW LITES. ALL PANES ANNEALED GLASS OR STRONGER. SINGLE PANES 3/8" OR THICKER. INSULATED WINDOWS 1/2" THICK, CONSISTING OF (2) PANES 3/8" THICK. FRAMES SECURED WITH QTY. (10) #8-11 CROSS RECESSED PAN HEAD, TYPE A TAPPING SCREW WITH (3) SCREWS ON EACH HORIZONTAL EDGE AND (2) ON EACH VERTICAL EDGE. SCREW LENGTH 1-1/2" FOR INSULATED DOORS AND 0.75" FOR UNINSULATED DOORS. MAXIMUM DLO 21-1/4" X 3-1/4".

TWO POINT LOCKING REQ'D.

2-1/4" X 20 GA. GALV. STEEL U-BAR. ONE U-BAR PER DOOR SECTION U-BARS ATTACHED AT EACH STILE LOCATION WITH (2) 1/4" X 3/4" SELF-TAPPING SCREWS

BOTTOM SECTION REINFORCED WITH TEMPERED ALUMINUM EXTRUSION WITH INTEGRAL RETAINER FOR FLEXIBLE VINYL ASTRAGAL

ADJUSTABLE TOP ROLLER BRACKET OF 12 GA. GALV. STEEL, INSTALLED ON DOOR WITH (4) #14 X 5/8" LG SHEET METAL SCREWS

2-1/4" X 20 GA. GALV STEEL U-BAR.

END HINGES OF MIN. 14 GA. GALV. STEEL, FASTENED WITH (4) #14 X 5/8" LG. SHT. MTL. SCREWS AND (4) 1/4"x3/4" SELF-TAPPING SCREWS.

2" 10 BALL SHORT STEM STEEL ROLLER WITH STEEL OR NYLON TIRE  
BOTTOM ROLLER BRACKET OF 13 GA. GALV. STEEL, FASTENED WITH (4) #14 X 5/8" LG SHT. MTL. SCREWS

SECTION 1-1

DESIGN LOADS: +30 & -30 P.S.F.  
TEST LOADS +45 & -45 P.S.F.

SIDE ELEVATION STANDARD-LIFT TRACK DETAILS

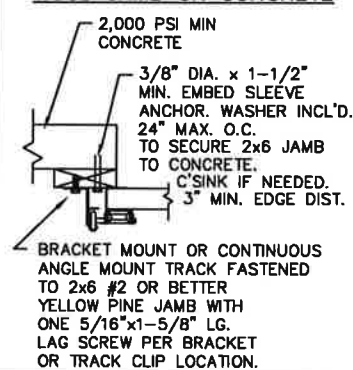


SECTION 2-2

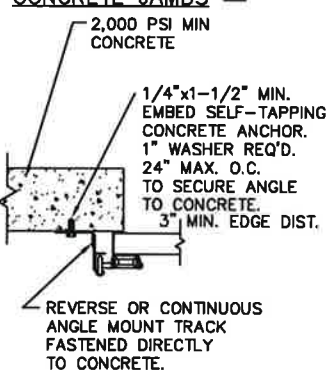
14 GA. GALV. CENTER HINGE FASTENED WITH (4) #14x5/8" SHEET METAL SCREWS.

ANCHOR NOTE: FIRST (BOTTOM) ANCHOR STARTING AT NO MORE THAN HALF OF THE MAXIMUM ON-CENTER DISTANCE. HIGHEST ANCHOR INSTALLED AT LEAST AS HIGH AS THE DOOR OPENING.

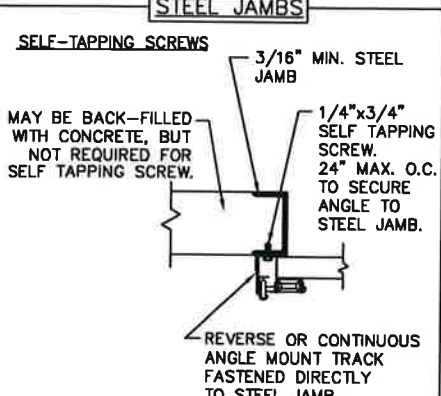
WOOD JAMB ON CONCRETE



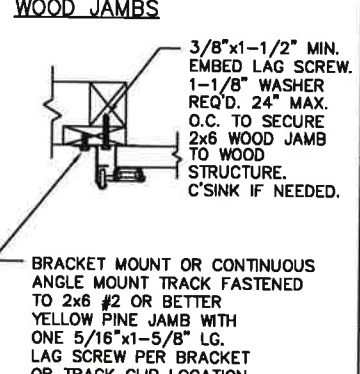
CONCRETE JAMBS



STEEL JAMBS



WOOD JAMBS



THE DESIGN OF THE SUPPORTING STRUCTURAL ELEMENTS IS THE RESPONSIBILITY OF THE BUILDING ENGINEER OR ARCHITECT OF RECORD.

MARK WESTERFIELD, P.E.  
FLORIDA P.E. #48495, NC P.E. #23832,  
TEXAS P.E. #91513

CLOPAY CORP.  
ALL RIGHTS RESERVED.

Third Angle Projection

Unless Stated Otherwise TOLERANCES are  
.0 = ±.031  
.00 = ±.015  
.000 = ±.005  
.0000 = ±.001  
Degrees = ±1/2'

Unless Stated Otherwise DIMENSIONS ARE IN INCHES.

**Clopay**  
CORPORATION

8585 Duke Boulevard  
Mason, OH 45040 USA  
Tel. No. 513-770-4800  
Fax No. 513-770-4853

MANUFACTURING PRODUCT CODE:  
MPC: C-PAN-1E448

WINDLOAD RATING  
W5

DESCRIPTION: COMMERCIAL RIBBED DOOR, 8' 2" WIDTH, +/- 30 PSF DESIGN LOAD	DATE: 4/19/99	SCALE: NOTED	DWG. SIZE B
DRAWN BY: RJK	DATE: 4/99	SHEET 1 OF 1	
CHECKED BY: MWW			
DWG. NO.: 101874			