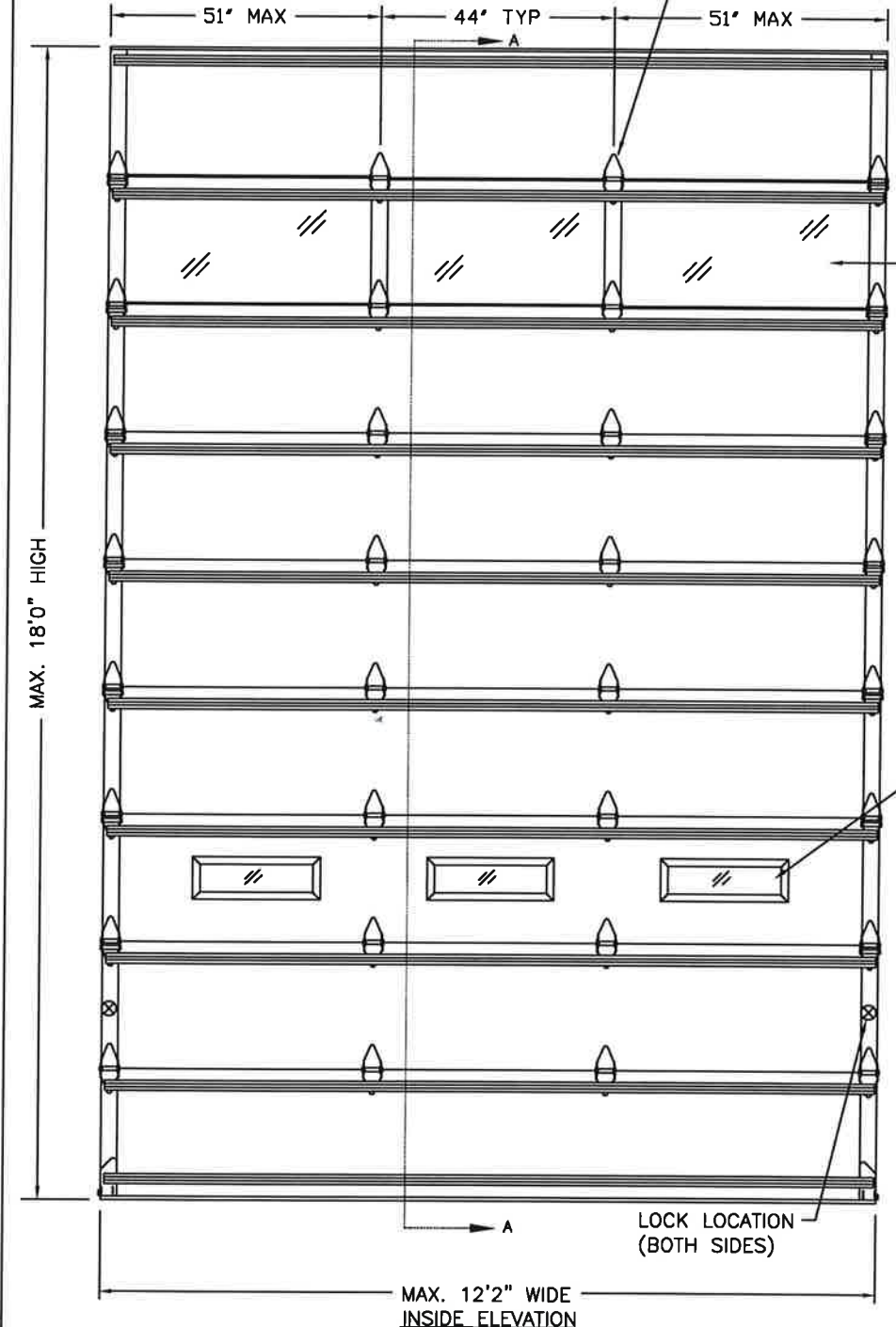


CLOPAY MODEL 3200 (24 GA MIN EXT SKIN)
 CLOPAY MODEL 3220 (20 GA MIN EXT SKIN)
 HOLMES MODEL 240, 240G (24 GA MIN EXT SKIN)



(1) INTER. HINGE ON DOORS UP TO 9'2\"/>

OPTIONAL ALUMINUM FULL VISION WINDOW LITE SECTIONS AVAILABLE, SINGLE PANE OR INSULATED. ALL PANES ANNEALED GLASS OR STRONGER. SINGLE PANES 3/8\"/>

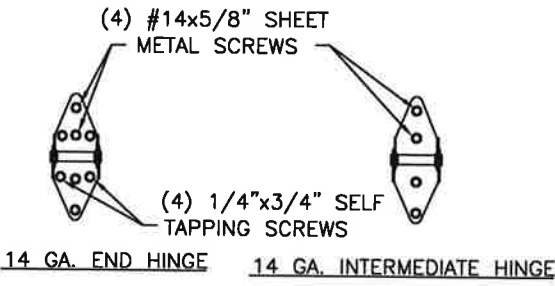
DOOR HEIGHT 'A'	NUMBER OF SECTIONS
UP TO 8'-0"	4
8'-3" THRU 10'-0"	5
10'-3" THRU 12'-0"	6
12'-3" THRU 14'-0"	7
14'-3" THRU 16'-0"	8
16'-3" THRU 18'-0"	9

MAX. SECTION HEIGHT: 24"

DOOR HEIGHT "L"	"L"
8'-0"	88"
9'-0"	100"
10'-0"	112"
12'-0"	136"
14'-0"	160"
15'-0"	172"
16'-0"	184"
17'-0"	196"
18'-0"	208"

OPTIONAL SINGLE PANE OR INSULATED WINDOW LITES. ALL PANES ANNEALED GLASS OR STRONGER. SINGLE PANES 3/8\"/>

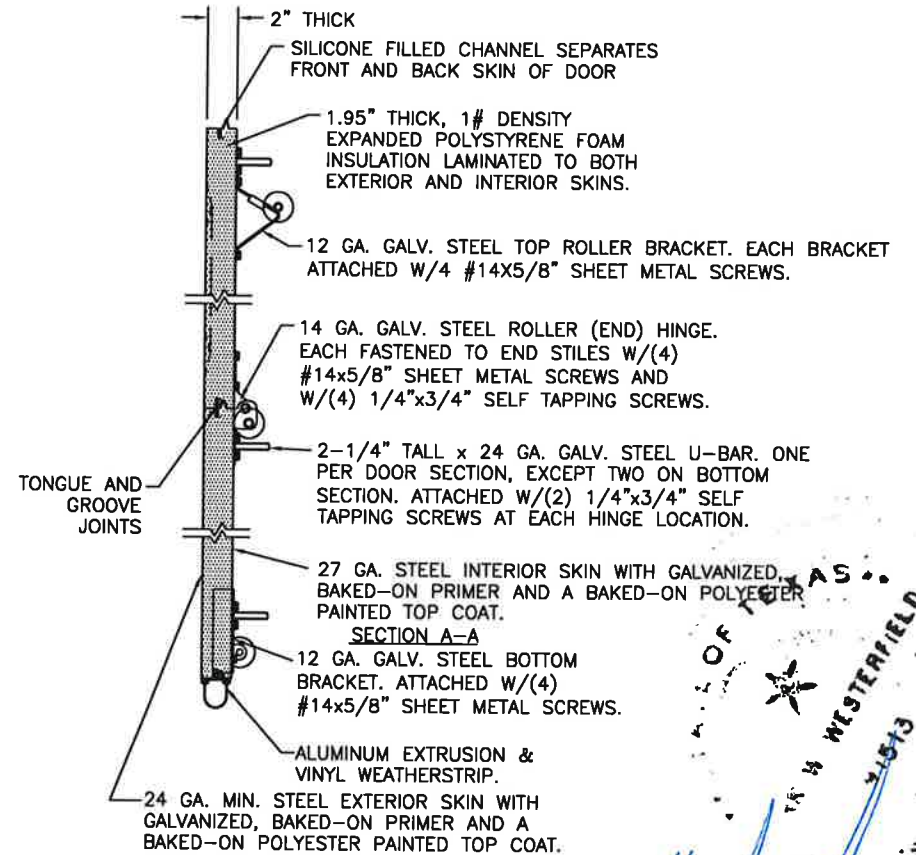
NOTE: THE DESIGN OF THE SUPPORTING STRUCTURAL ELEMENTS ARE THE RESPONSIBILITY OF THE PROFESSIONAL OF RECORD FOR THE BUILDING OR STRUCTURE AND IN ACCORDANCE WITH CURRENT BUILDING CODES FOR THE LOADS LISTED ON THIS DRAWING.



THIS PRODUCT COMPLIES WITH THE 2018 IBC/IRC.

REV	DATE	DESCRIPTION
11	06/2013	REMOVED ACRYLIC/WIRE GLAZING. SPECIFIED FV DIMEN.
12	08/2016	REMOVED WIND SPEED TABLE.
13	02/2022	REVISED FOR TDI.

THE OPTIONAL GLAZING SHOWN ON THIS DRAWING MEETS THE WIND LOAD REQUIREMENTS OF THE FLORIDA BUILDING CODE OR INTERNATIONAL BUILDING CODE BUT DOES NOT MEET THE IMPACT RESISTANT REQUIREMENT FOR WINDBORNE DEBRIS REGIONS (REF. CHAPTER 16 FBC/IBC)



Professional Engineer Seal for Mark Westerfield, State of Texas, No. 91513, dated 5/31/22.

DESIGN ENGINEER: MARK WESTERFIELD, P.E. TEXAS P.E. #91513 FLORIDA P.E. #48495, NC P.E. #23832, DESIGN LOADS: +25.0, -28.0 PSF TEST LOADS: +37.5, -42.0 PSF

ORIGINAL DRAWINGS ARE SIGNED IN BLUE INK WITH A RAISED SEAL (EMBOSS).

PAGE 1 OF 2



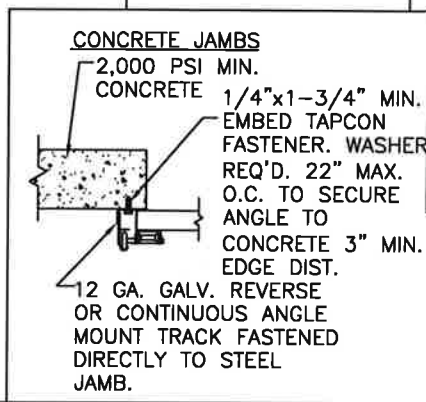
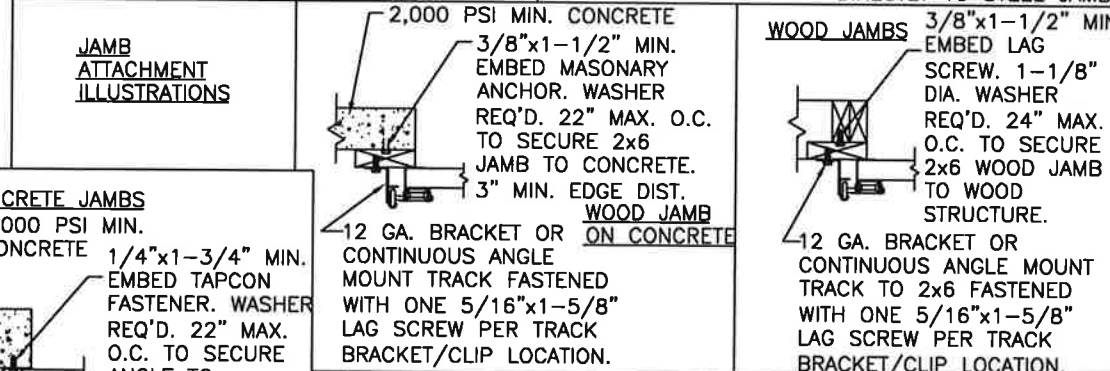
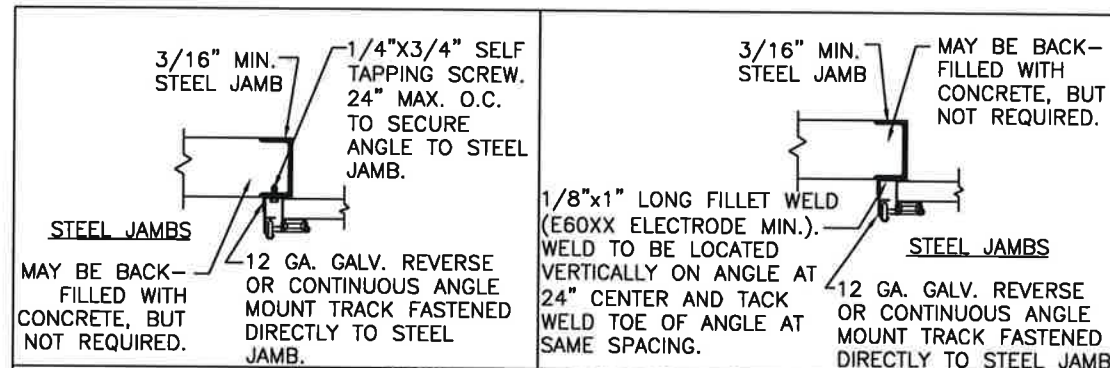
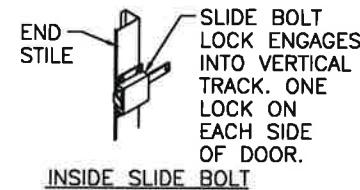
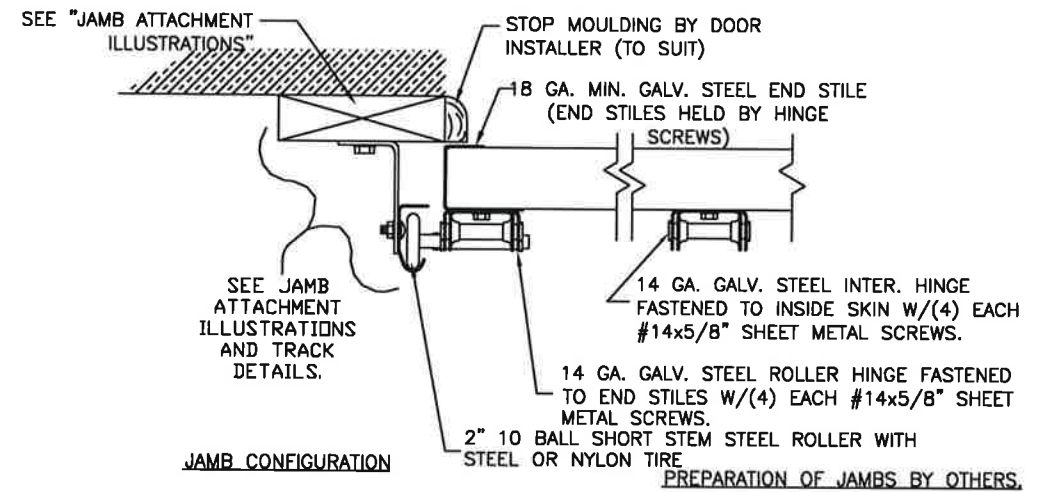
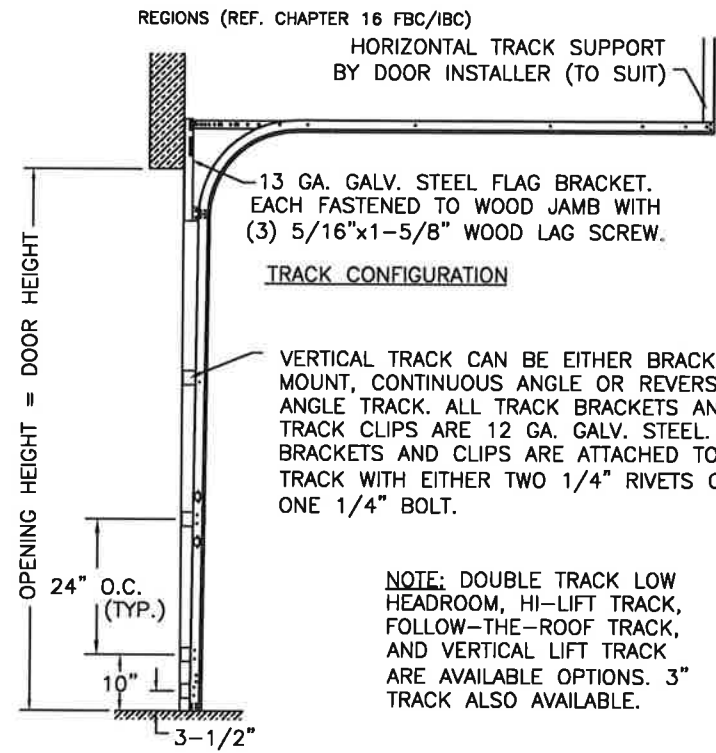
CLOPAY CORPORATION
 8585 DUKE BLVD.
 MASON, OH 45040
 (513) 770 - 4800
 Clopay Corporation All Rights Reserved.

MANUFACTURING PRODUCT CODE: MPC: C-DSIE-1F447	WINDLOAD RATING W4	MAX DOOR SIZE: 12'2"W x 18'0"H
DATE: 9/26/96	DESCRIPTION: MODEL 3200/3220: +25/28 PSF DESIGN	
DRAWN BY: MWW	B	VERSION: TDI
CHECKED BY:	101687	

CLOPAY MODEL 3200 (24 GA MIN EXT SKIN)
 CLOPAY MODEL 3220 (20 GA MIN EXT SKIN)
 HOLMES MODEL 240, 240G (24 GA MIN EXT SKIN)

-(1) INTER. HINGE ON DOORS
 UP TO 9'2"W (2) INTER. HINGES
 ON DOORS UP TO 12'2"W

REV	DATE	DESCRIPTION
13	02/2022	SEE SHEET 1 FOR REVISION DETAILS.



Professional Engineer
 MARK W. WESTERFIELD
 5/31/22

Clopay
 CORPORATION

CLOPAY CORPORATION
 8585 DUKE BLVD.
 MASON, OH 45040
 (513) 770 - 4800
 Clopay Corporation All Rights Reserved.

MANUFACTURING PRODUCT CODE: MPC: C-DSIE-1F447	WINDLOAD RATING W4	MAX DOOR SIZE: 12'2"W x 18'0"H
DATE: 9/26/96	DESCRIPTION: MODEL 3200/3220: +25/28 PSF DESIGN	
DRAWN BY: MWW	DRAWING NUMBER: B 101687	VERSION: TDI
CHECKED BY:		