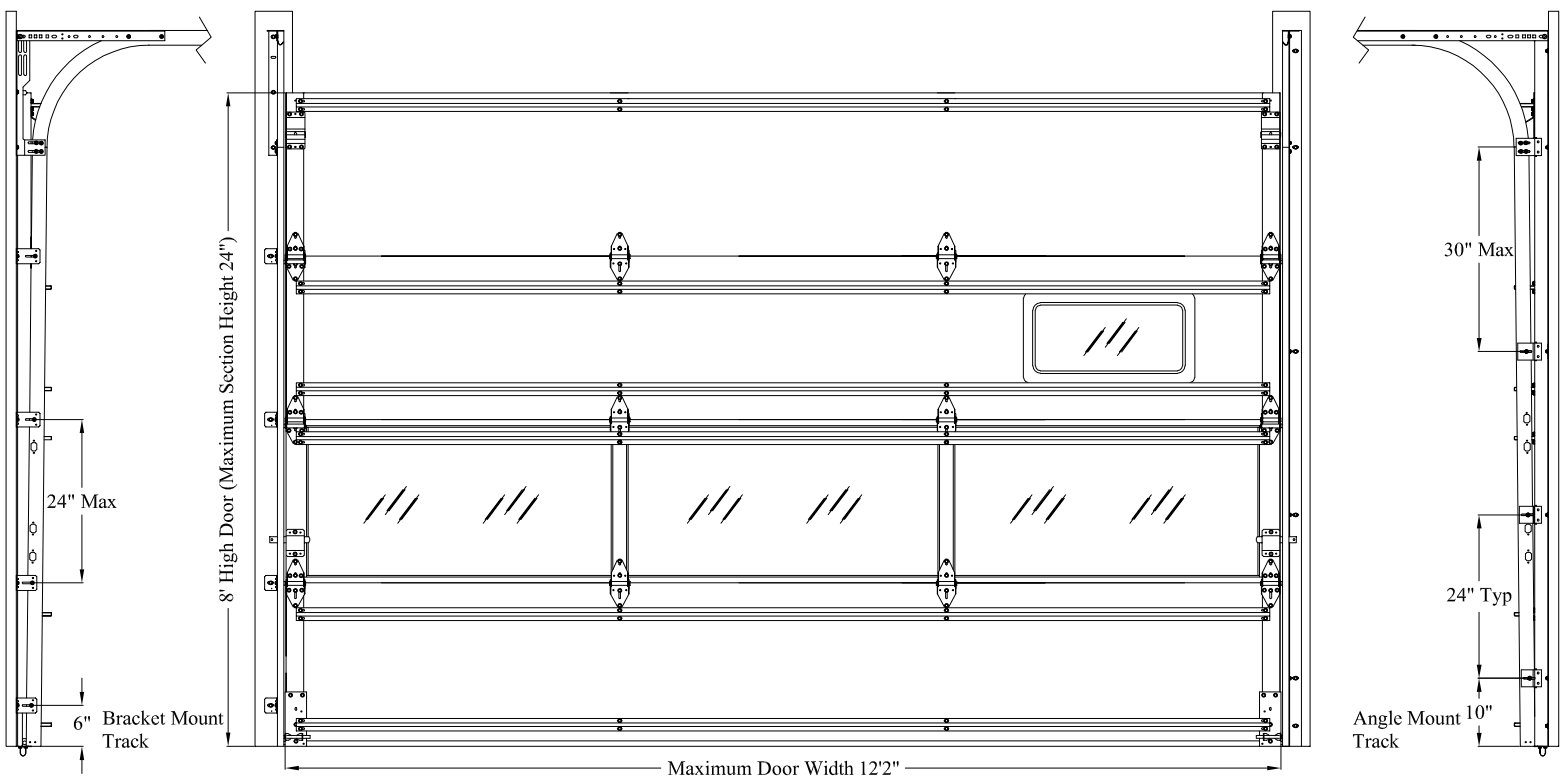


Door Height	Section Quantity	Strut Quantity	Track Brackets Per Side	Angle Clips Per Side
7'-0" to 8'-0"	4	6	4	3
8'-9" to 10'-0"	5	8	5	4
10'-6" to 12'-0"	6	9	6	5
12'-3" to 14'-0"	7	11	7	6
14'-3" to 16'-0"	8	12	8	7
16'-3" to 18'-0"	9	14	9	8
18'-3" to 20'-0"	10	15	10	9
20'-3" to 22'-0"	11	17	11	10
22'-3" to 24'-0"	12	18	12	11

Note: Maximum door height is 24'. Detail views shown on Sheets 2-3. Consult Sheet 4 for Strut and Section Location Chart.

Model Numbers Available
6500 Series

REVISIONS			
REV	DESCRIPTION	DATE	APPROVED
01	UPDATED FOR TDI COMPLIANCE	07/11/2022	DMK



Printed copies of this document are not considered signed and sealed and the signature must be verified on any electronic copies.

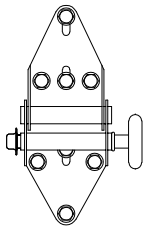
John E. Scates, PE
 2560 King Arthur Blvd. Ste 124-54
 Lewisville, TX 75056
 FL PE 51737
 TX PE 56308 / F-2203

NOTE:
 1. This product has been evaluated per ANSI/DASMA 108 and ASTM E330.
 2. This product complies with the requirements of the 2018 IBC/IRC.
 3. Doors with glazing not qualified for use in windborne debris regions.
 4. This drawing provides windload assembly details for the claimed size and pressures.

Max Size:
 12'2" x 24'
Design Pressure:
 +28.0/-31.0

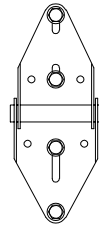


DESCRIPTION: Wind Load Rated Commercial Sandwich Sectional Garage Door 12'2" Wide 6500 Series Doors			
DRAWING NUMBER: CS12A_28.0_31.0		REV: 01	
DRAWN BY: DMK	DATE DRAWN: 9/25/20	REV DATE: 7/11/22	
SIZE: ANSI A	SCALE: NTS	SHEET: 1 of 4	

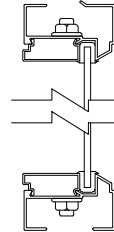


End Hinge
14 gauge galvanized steel end hinges attached with four 1/4" x 3/4" screws and four 1/4" x 5/8" self tapping screws each.

Roller
Minimum nylon roller or 10 ball steel roller with 4" stem and push nuts on all hinge rollers.



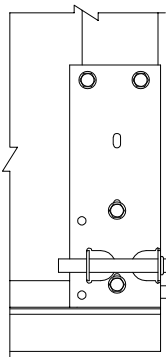
Center Hinge
14 gauge galvanized steel wide body hinge attached with four 1/4" x 3/4" screws.



Full Vision Section (optional)
Section made up of .050" min wall extruded aluminum rails and .062" wall extruded aluminum stiles and assembled with 5/16" all-thread.

1/8" DSB annealed glass, 1/8" DSB tempered Glass, 1/4" annealed glass, 1/4" tempered glass, or 1/2" insulated glass comprised of (2) annealed DSB glass or (2) tempered DSB glass is held in place on all four sides with gasket and snap in aluminum clip.

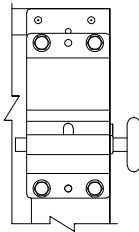
Section shall be reinforced similar to the standard sections per location within the door with the strut(s) located over the hinges for strength and concealment.



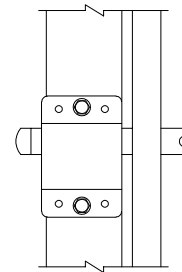
End Cap
20 gauge galvanized steel end cap attached with one sheet metal screw.

Bottom Bracket
13 gauge galvanized steel bottom bracket attached with four 1/4" x 5/8" self-tapping screws (push nut not required on roller).

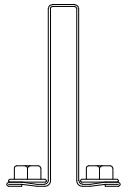
Bottom Weatherstrip
Aluminum extrusion with vinyl insert.



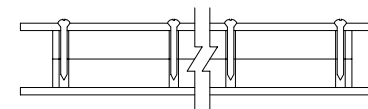
Top Fixture
12 gauge galvanized steel top fixtures attached to door with four 1/4" x 5/8" self-tapping screws each (push nut not required on roller).



Locking Mechanism
Door requires (2) locking device(s) installed (inside slide lock shown, other lock types permitted) that engage both vertical tracks.




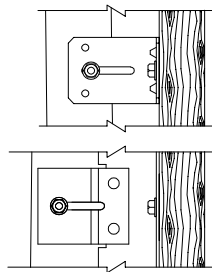
Struts
3" x 1 7/8" 20 gauge 50 ksi hat strut attached with two 1/4" x 5/8" self-tapping screws per stile (minimum length is door width minus 3").



Windows (optional)
Windows available in sizes listed below. Frames are molded plastic.

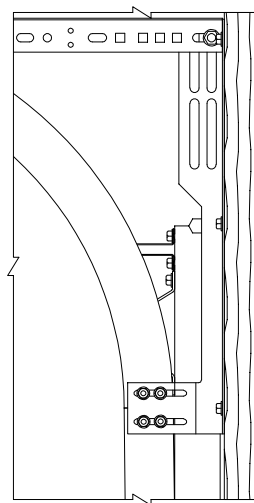
Frame	Max Daylight Opening	Fastener Pattern	Glazing Types
24x8	23-1/2" x 7-1/2"	#8-2" (10) total, (3) along each horizontal edge & (2) along each vertical edge	1" IG Consisting of (2) Pieces of 1/8" DSB Annealed or Tempered Glass With 1/2" Spacer
24x12	21-3/4" x 9-3/4"	#8-2" (16) total, (5) along each horizontal edge & (3) along each vertical edge	1" IG Consisting of (2) Pieces of 1/8" DSB Annealed or Tempered Glass With 1/2" Spacer

Max Size: 12'2" x 24' Design Pressure: +28.0/-31.0	 5700 NW 39th Street Riverside, MO 64150	DESCRIPTION: Wind Load Rated Commercial Sandwich Sectional Garage Door 12'2" Wide 6500 Series Doors		
		DRAWING NUMBER: CS12A_28.0_31.0		REV: 01
DRAWN BY: DMK		DATE DRAWN: 9/25/20	REV DATE: 7/11/22	
SIZE: ANSI A		SCALE: NTS	SHEET: 2 of 4	



Track Clips and Brackets

2 1/4" wide x 12 gauge galvanized steel track bracket attached to vertical track with one 1/4" x 3/4" track bolt and nut. 2 1/2" x 12 gauge galvanized steel track clip riveted to vertical angle and attached to vertical track with one 1/4" x 3/4" track bolt and nut.



Bracket Mount Track

Flag Bracket

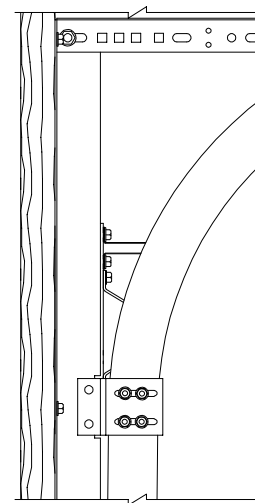
12 gauge galvanized steel flag bracket attached to jamb with three appropriate fasteners according to the jamb material and to the horizontal and vertical tracks with two 1/4" x 3/4" track bolts and nuts each.

Horizontal Track and Angle

Horizontal track and angle to suit with suitable back hang. Standard lift is shown, vertical lift and high lift are acceptable.

Vertical Track

2" galvanized steel track with a minimum thickness of .056" or 3" galvanized steel track with a minimum thickness of .096".



Angle Mount Track

Vertical Angle

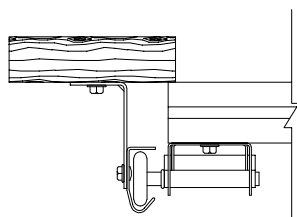
12 gauge galvanized steel angle attached to jamb with appropriate fasteners according to the jamb material at each track clip location as well as one 3" down from the top of the angle and one 3" up from the floor.

Horizontal Track and Angle

Horizontal track and angle to suit with suitable back hang. Standard lift is shown, vertical lift and high lift are acceptable.

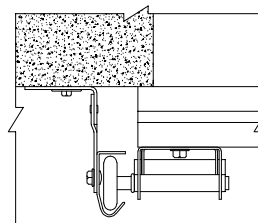
Vertical Track

2" galvanized steel track with a minimum thickness of .056" or 3" galvanized steel track with a minimum thickness of .096".



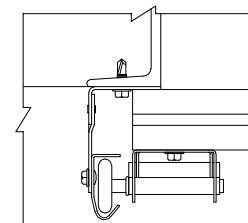
Wood Jamb

Vertical jamps are to be 2x6 Southern Yellow Pine (SYP) or better. Bracket or angle mounted track attached to jamb with 5/16" x 1 5/8" wood lag screws. Minimum jamb overlap is 1/2".



Concrete Jamb


Vertical jamps are to be 2500 psi minimum concrete with bracket or angle mounted track secured to jamb with minimum 1/4" diameter Tapcon+ (PLUS) fasteners and 1" O.D. washers and minimum embedment of 2". The minimum edge distance required is 2 1/2" and the minimum jamb overlap is 1/2".



Steel Jamb

Vertical jamps are to be 3/16" minimum steel (may be back-filled with concrete but not required) with angle mounted track secured to jamb with minimum 5/16" Tek Self-Drilling screws. Minimum jamb overlap is 1/2".

Note: Preparation of jamps by others. Supporting structural elements must be capable of withstanding the rated windload. Refer to DASMA TDS 161 or a licensed design professional for additional jamb configurations.

<p>Max Size: 12'2" x 24'</p> <p>Design Pressure: +28.0/-31.0</p>	 <p>5700 NW 39th Street Riverside, MO 64150</p>	<p>DESCRIPTION: Wind Load Rated Commercial Sandwich Sectional Garage Door 12'2" Wide 6500 Series Doors</p>			
		<p>DRAWING NUMBER: CS12A_28.0_31.0</p>		<p>REV: 01</p>	
		<p>DRAWN BY: DMK</p>	<p>DATE DRAWN: 9/25/20</p>	<p>REV DATE: 7/11/22</p>	
		<p>SIZE: ANSI A</p>	<p>SCALE: NTS</p>	<p>SHEET: 3 of 4</p>	

