

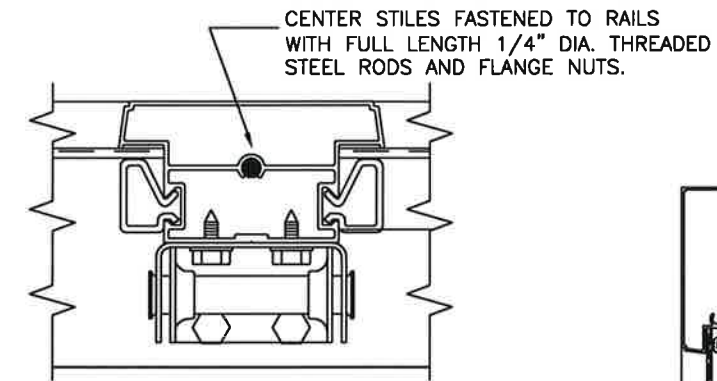
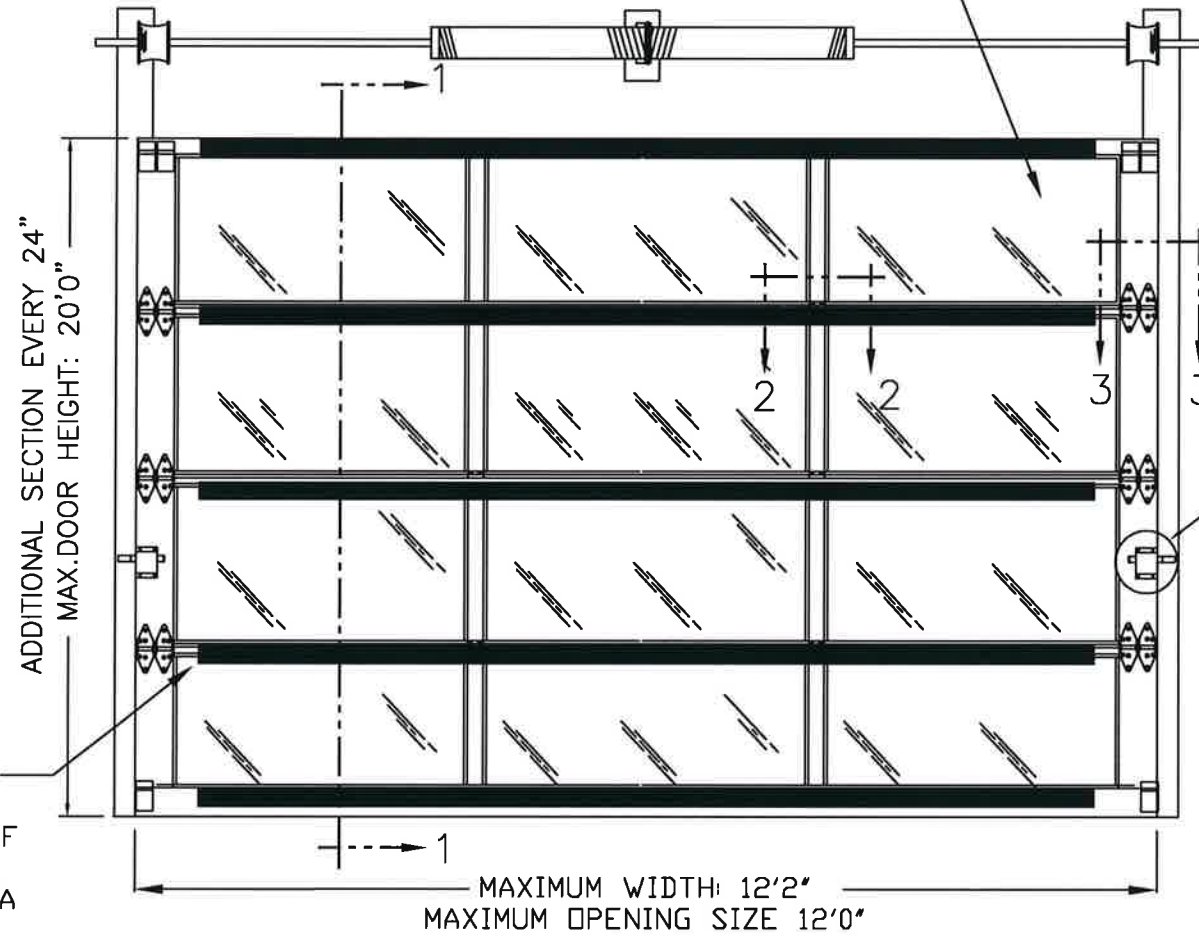
BRAND	MODEL
CLOPAY	904, 904U, AX, AXU
IDEAL	C4AL, C4ALU

THIS PRODUCT COMPLIES WITH THE 2018 IBC/IRC.

SHEET:
1 OF 2

REVISIONS					DESCRIPTION
REV. NO.	ZONE:	DATE:	ECN NO.	APPVD:	
00	ALL	10/22		jdw	INITIAL RELEASE

DSB LITES OR BETTER, ANNEALED OR TEMPERED. INSULATED GLAZING SHALL CONSIST OF 2 ANNEALED OR TEMPERED DSB LITES. MAX DLO 41.25" X 19.5".

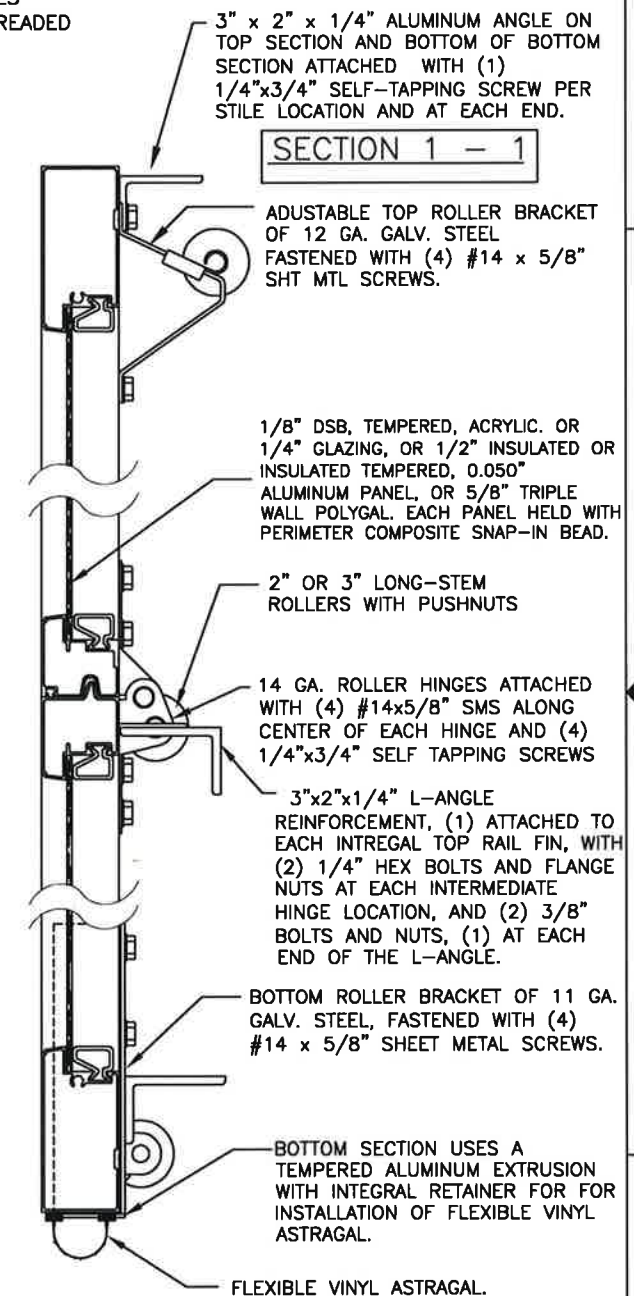


TWO POINT LOCKING.

SECTION 2 - 2

SECTIONS PER DOOR HEIGHT	
UP TO 6'0"	3
FROM 6'1" TO 8'0"	4
FROM 8'1" TO 10'0"	5
FROM 10'1" TO 12'0"	6
FROM 12'1" TO 14'0"	7
FROM 14'1" TO 16'0"	8
FROM 16'1" TO 18'0"	9
FROM 18'1" TO 20'0"	10

REINFORCEMENT:
3"x2"x1/4" L-ANGLE
6061 ALUMINUM

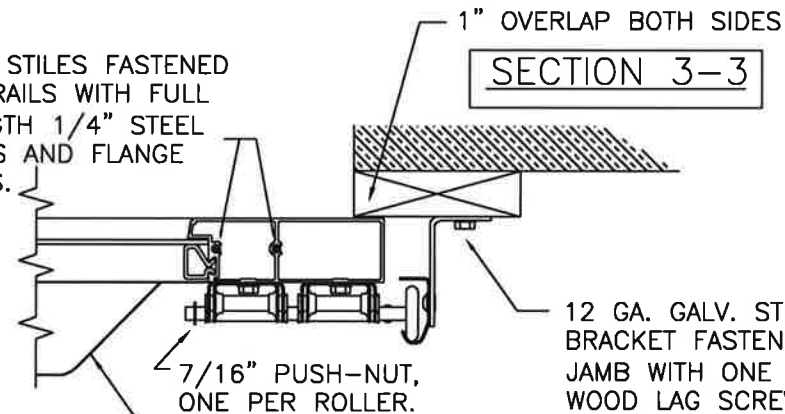


3"x2"x1/4" ALUMINUM L-ANGLE, TOP OF EACH SECTION, PLUS ONE EXTRA AT BOTTOM OF DOOR.

END STILES FASTENED TO RAILS WITH FULL LENGTH 1/4" STEEL RODS AND FLANGE NUTS.

INTERGAL FIN ON INTER. TOP RAILS NOTCH CUT AT END STILES.

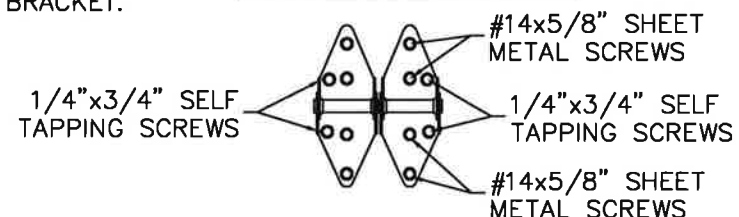
SECTION 3-3



SEE PAGE 2 FOR DIFFERENT JAMB CONFIGURATIONS.

MODEL 904 (6063-T5 ALUMINUM):
TOP RAIL MIN THK 0.075"
STD END STILE MIN THICK 0.075"
STD BTM RAIL MIN THK 0.075"
CENTER STILE PMIN THK 0.075"
INTER. TOP RAIL MIN THK 0.062" W/ 0.100" FIN
INTER. BOTTOM RAIL MIN THK 0.062"

14 GAUGE DOUBLE END ROLLER HINGE FASTENERS



DESIGN ENGINEER:
MARK WESTERFIELD, P.E.
FLORIDA P.E. #48495, NC P.E. #23832, TEXAS P.E. #91513

DESIGN LOADS: +40.0, -44.0 PSF
TEST LOADS: +60.0, -66.0 PSF

	8585 Duke Boulevard Mason, OH 45040 USA Tel. No. 513-770-4800 Fax No. 513-770-4853	CLOPAY WINDLOAD RATING	
	W6		
DESCRIPTION: M/N 904 12' WIDE +40/-44 PSF			
DRAWN BY: JDW	DATE: 10/10/22	SCALE:	DWG. B
CHECKED BY:	DATE:	SHEET 1 OF 2	SIZE
DWG. NO.: 105825	VERSION: TDI		

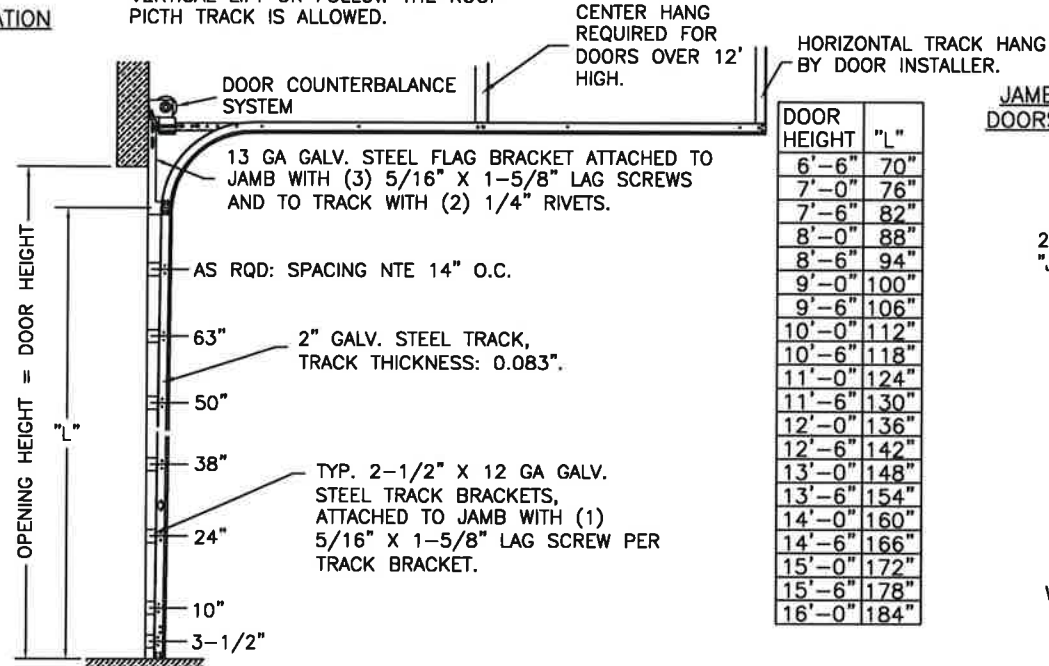
BRAND	MODEL
CLOPAY	904, 904U, AX, AXU
IDEAL	C4AL, C4ALU

SHEET:
2 OF 2

REVISIONS						DESCRIPTION
REV. NO.	ZONE:	DATE:	ECN NO.	APPVD:		
---	---	---	---	---		SEE PAGE 1 FOR REVISION DETAILS

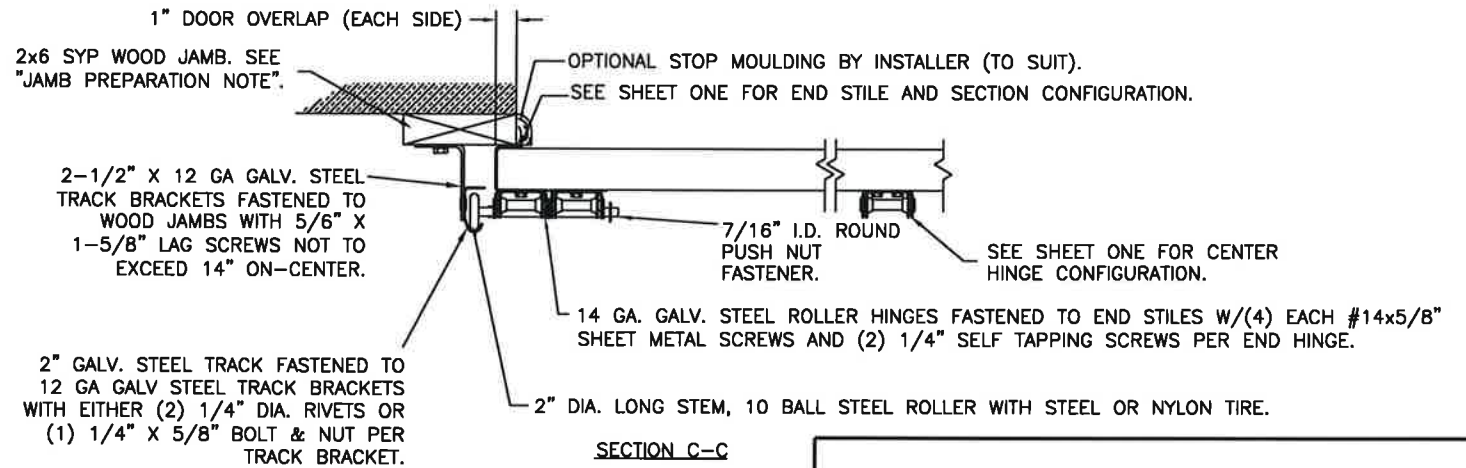
NOTE: HORIZONTAL TRACK CONFIGURATION ABOVE THE DOOR OPENING DOES NOT AFFECT THE WIND LOAD RATING OF THIS DOOR. STANDARD LIFT, LOW HEADROOM, HIGH LIFT, VERTICAL LIFT OR FOLLOW THE ROOF PITCH TRACK IS ALLOWED.

2" TRACK CONFIGURATION



DOOR HEIGHT	"L"
6'-6"	70"
7'-0"	76"
7'-6"	82"
8'-0"	88"
8'-6"	94"
9'-0"	100"
9'-6"	106"
10'-0"	112"
10'-6"	118"
11'-0"	124"
11'-6"	130"
12'-0"	136"
12'-6"	142"
13'-0"	148"
13'-6"	154"
14'-0"	160"
14'-6"	166"
15'-0"	172"
15'-6"	178"
16'-0"	184"

JAMB CONFIGURATION DOORS WITH 2" TRACK.



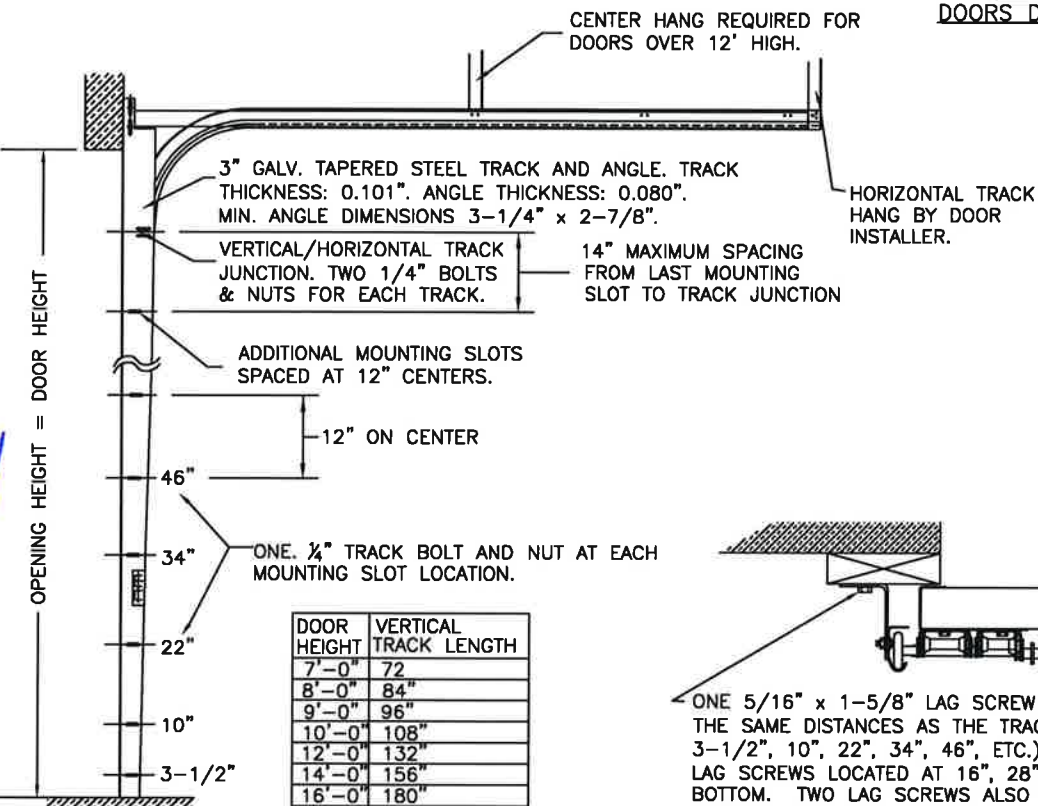
SECTION C-C

PREPARATION OF JAMBS BY OTHERS

JAMB NOTE: FOR JAMB TYPES AND JAMB ATTACHMENT FASTENER INFORMATION (INCLUDING FASTENER TYPE, SIZE AND SPACING) TO THE SUPPORTING STRUCTURE USE DASMA TDS-161. DESIGN OF THE SUPPORTING STRUCTURAL ELEMENTS SHALL BE THE RESPONSIBILITY OF THE PROFESSIONAL OF RECORD FOR THE BUILDING OR STRUCTURE AND IN ACCORDANCE WITH CURRENT BUILDING CODES FOR THE LOADS LISTED ON THIS DRAWING.

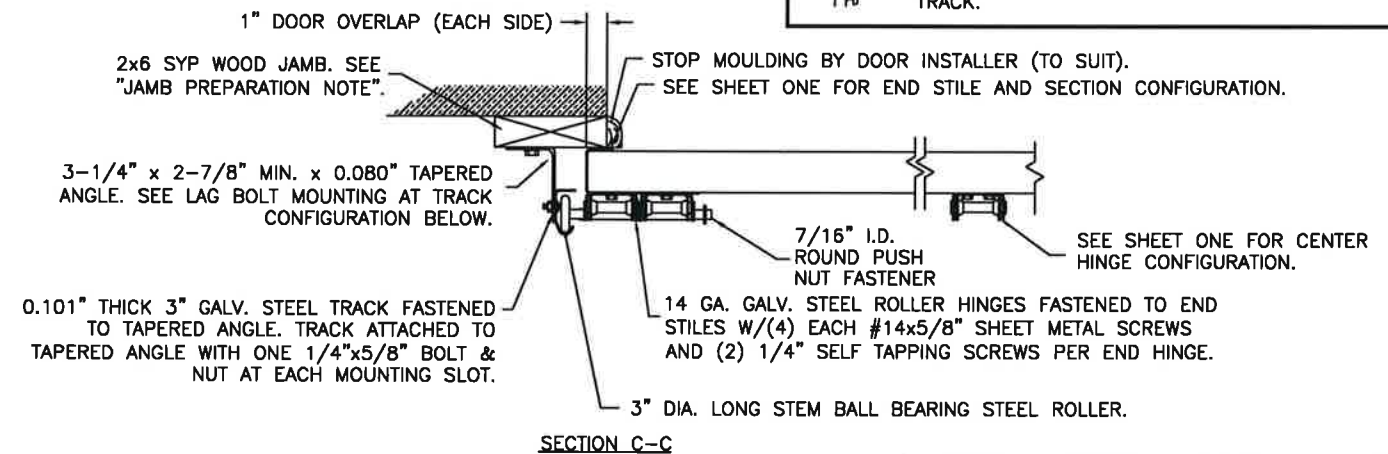
3" TRACK CONFIGURATION

NOTE: HORIZONTAL TRACK CONFIGURATION ABOVE THE DOOR OPENING DOES NOT AFFECT THE WIND LOAD RATING OF THIS DOOR.

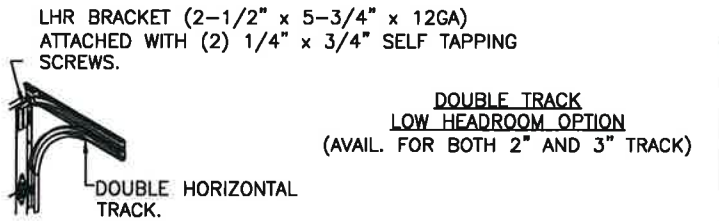


DOOR HEIGHT	VERTICAL TRACK LENGTH
7'-0"	72"
8'-0"	84"
9'-0"	96"
10'-0"	108"
12'-0"	132"
14'-0"	156"
16'-0"	180"

JAMB CONFIGURATION DOORS WITH 3" TRACK.



SECTION C-C



DESIGN LOADS: +40.0, -44.0 PSF
TEST LOADS: +60.0, -66.0 PSF



DESIGN ENGINEER:
MARK WESTERFIELD, P.E.
FLORIDA P.E. #48495, NC P.E. #23832, TEXAS P.E. #91513

Clopay CORPORATION	8585 Duke Boulevard Mason, OH 45040 USA Tel. No. 513-770-4800 Fax No. 513-770-4853	CLOPAY WINDLOAD RATING W6
DESCRIPTION: M/N 904 12' WIDE +40/-44 PSF		
DRAWN BY: JDW	DATE: 10/10/22	SCALE: _____ DWG. SIZE B
CHECKED BY:	DATE:	SHEET 2 OF 2
DWG. NO.: 105825	VERSION: TDI	