

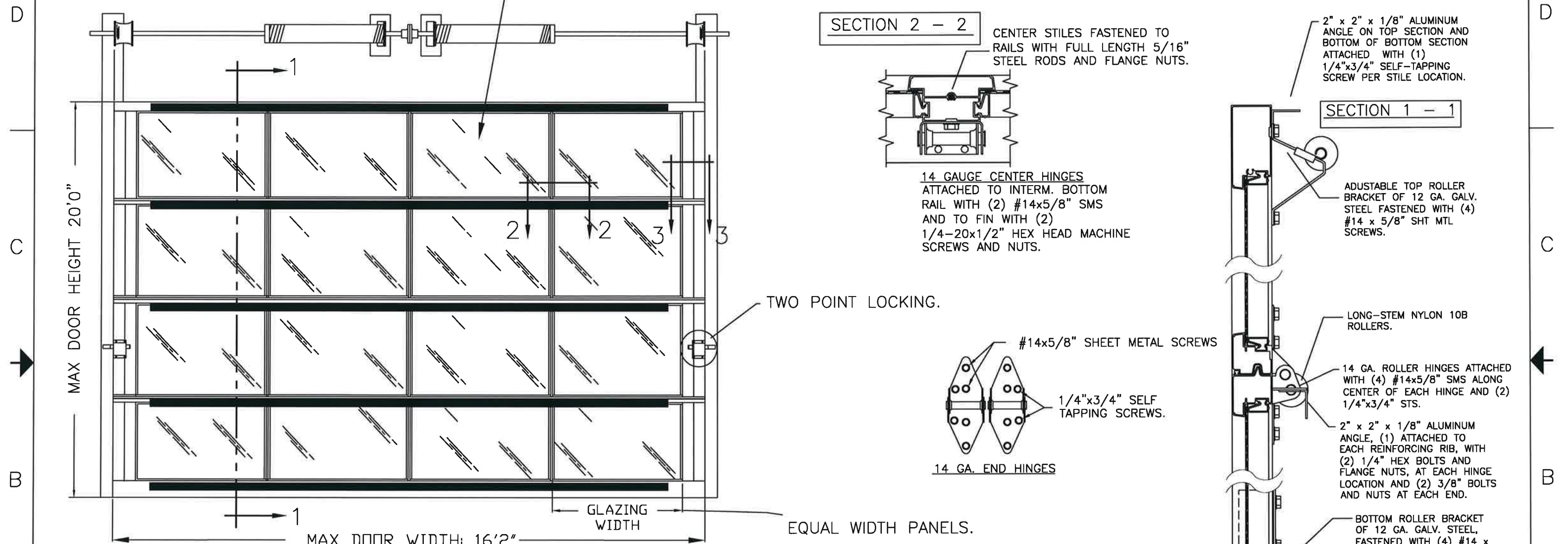
BRAND	MODEL
CLOPAY	904, 904U, AX, AXU
IDEAL	C4AL, C4ALU

THIS PRODUCT COMPLIES WITH THE 2018 IBC/IRC.

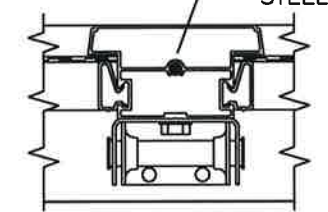
MADE FROM 6063-T5 ALUMINUM.

DSB LITES OR BETTER, ANNEALED OR TEMPERED. INSULATED GLAZING SHALL CONSIST OF 2 ANNEALED OR TEMPERED DSB LITES. MAX DLO 45.75" X 25.825".

REVISIONS					
REV. NO.	ZONE	DATE	ECN NO.	APPVD.	DESCRIPTION
00	-	4/7/22	-	JDW	RELEASED FOR PRODUCTION

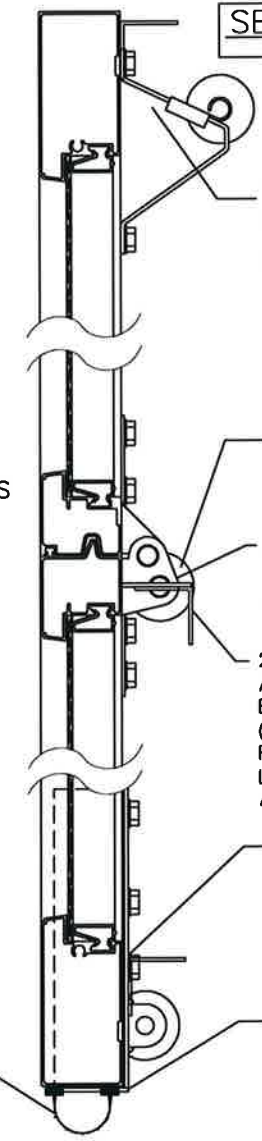


SECTION 2 - 2



CENTER STILES FASTENED TO RAILS WITH FULL LENGTH 5/16" STEEL RODS AND FLANGE NUTS.  
14 GAUGE CENTER HINGES ATTACHED TO INTERM. BOTTOM RAIL WITH (2) #14x5/8" SMS AND TO FIN WITH (2) 1/4-20x1/2" HEX HEAD MACHINE SCREWS AND NUTS.

SECTION 1 - 1



2" x 2" x 1/8" ALUMINUM ANGLE ON TOP SECTION AND BOTTOM OF BOTTOM SECTION ATTACHED WITH (1) 1/4"x3/4" SELF-TAPPING SCREW PER STILE LOCATION.

ADJUSTABLE TOP ROLLER BRACKET OF 12 GA. GALV. STEEL FASTENED WITH (4) #14 x 5/8" SHT MTL SCREWS.

LONG-STEM NYLON 10B ROLLERS.

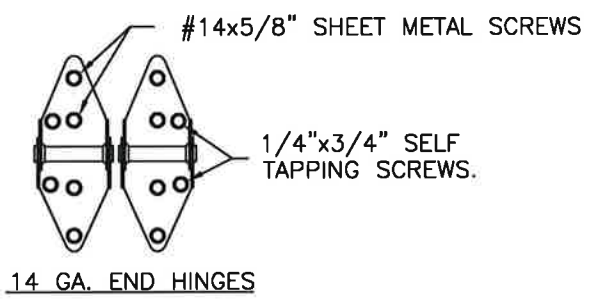
14 GA. ROLLER HINGES ATTACHED WITH (4) #14x5/8" SMS ALONG CENTER OF EACH HINGE AND (2) 1/4"x3/4" STS.

2" x 2" x 1/8" ALUMINUM ANGLE, (1) ATTACHED TO EACH REINFORCING RIB, WITH (2) 1/4" HEX BOLTS AND FLANGE NUTS, AT EACH HINGE LOCATION AND (2) 3/8" BOLTS AND NUTS AT EACH END.

BOTTOM ROLLER BRACKET OF 12 GA. GALV. STEEL, FASTENED WITH (4) #14 x 5/8" SHEET METAL SCREWS.

BOTTOM SECTION REINFORCED WITH A TEMPERED ALUMINUM EXTRUSION WITH INTEGRAL RETAINER FOR FLEXIBLE VINYL ASTRAGAL.

TWO POINT LOCKING.



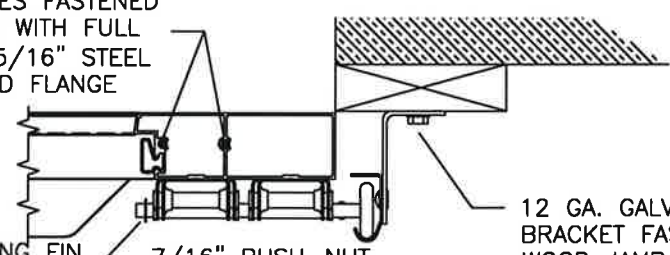
#14x5/8" SHEET METAL SCREWS

1/4"x3/4" SELF TAPPING SCREWS.

14 GA. END HINGES

EQUAL WIDTH PANELS.

SECTION 3-3



END STILES FASTENED TO RAILS WITH FULL LENGTH 5/16" STEEL RODS AND FLANGE NUTS.

SEE PAGE 2 FOR DIFFERENT JAMB CONFIGURATIONS

12 GA. GALV. STEEL TRACK BRACKET FASTENED TO WOOD JAMB WITH ONE 5/16"x1-5/8" WOOD LAG SCREW PER BRACKET.

7/16" PUSH-NUT, ONE PER ROLLER.

REINFORCING FIN ON INTER. TOP RAILS ANGLE CUT AT END STILES.

DESIGN PRESSURE: +32.0, -32.0 PSF  
TEST PRESSURE: +48.0, -48.0 PSF

FLEXIBLE VINYL ASTRAGAL.

DESIGN ENGINEER:  
MARK WESTERFIELD, P.E.  
FLORIDA P.E. #48495  
NC P.E. #23832, TEXAS P.E. #91513

MANUFACTURING PRODUCT CODE  
C-AL2-1F499

NOTICE: Confidential/Proprietary information of CLOPAY CORPORATION is contained herein and may not be disclosed, used, duplicated, made available, or distributed without its prior consent. Failure to observe this notice may result in liability for any damages and losses resulting therefrom.

Third Angle Projection

Unless Stated Otherwise TOLERANCES are  
.0 = ±.031  
.00 = ±.015  
.000 = ±.005  
.0000 = ±.001  
Degrees = ±1/2'

Unless Stated Otherwise DIMENSIONS ARE IN INCHES.

PART NO.: -		CLOPAY WINDLOAD RATING	
		W5	
DESCRIPTION: M/N 904 16' WIDE DES. +32/-32 PSF			
DRAWN BY: J. WHEELER	DATE: 4/7/22	SCALE: NTS	DWG. B
CHECKED BY: SH	DATE: CHKD_DT	SHEET 1 OF 2	SIZE B
DWG. NO.: 105525		REV. NO. 00	

4

3

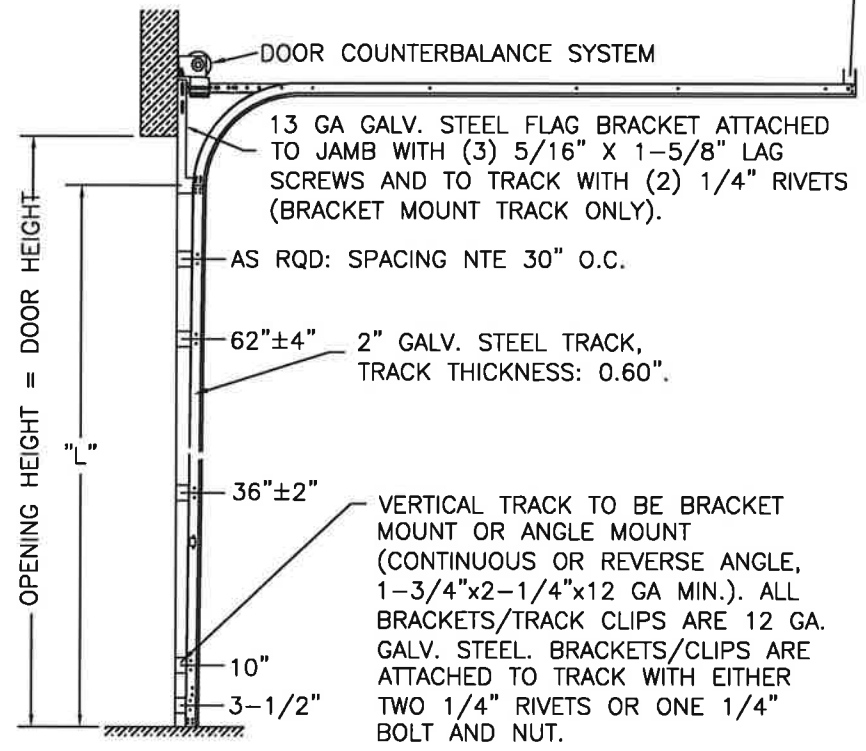
2

1

REVISIONS

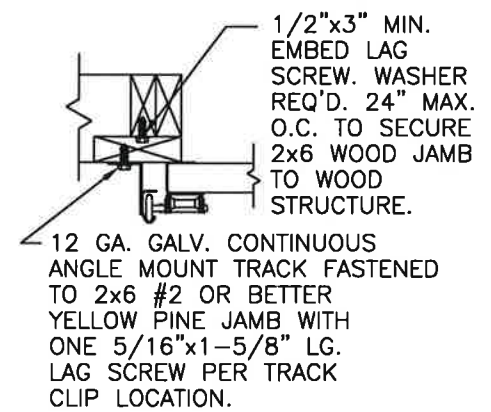
REV. NO.	ZONE:	DATE:	ECN NO.	APPVD:	DESCRIPTION
00	-	4/7/22	-	JDW	SEE REVISION HISTORY ON SHEET 1

2" TRACK CONFIGURATION.



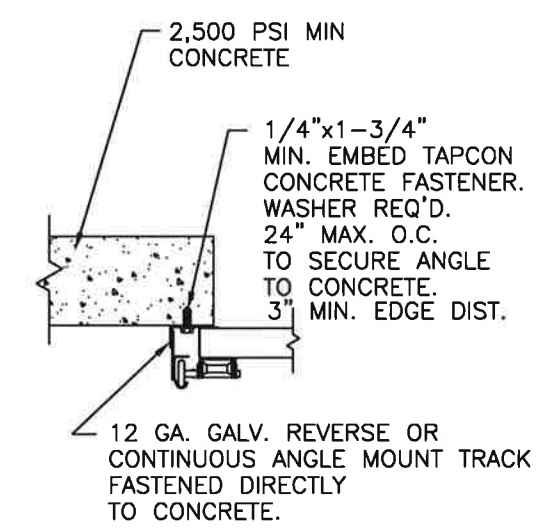
HORIZONTAL TRACK SUPPORT BY DOOR INSTALLER (TO SUIT).

WOOD JAMBS



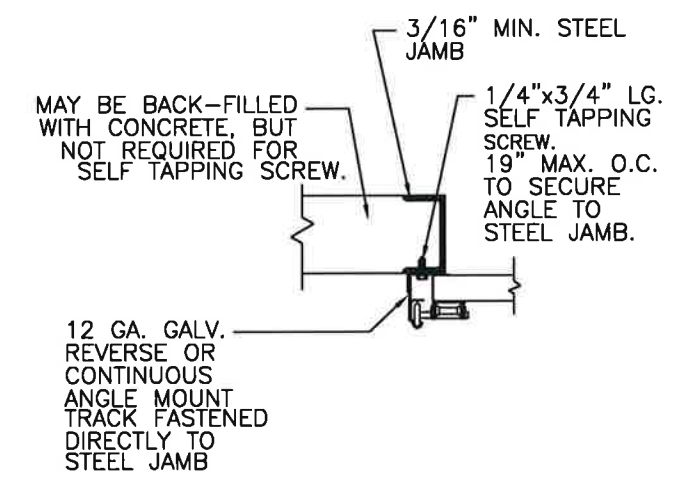
SECTION 3-3

CONCRETE JAMBS



SECTION 3-3

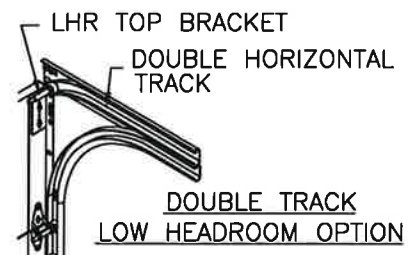
STEEL JAMBS



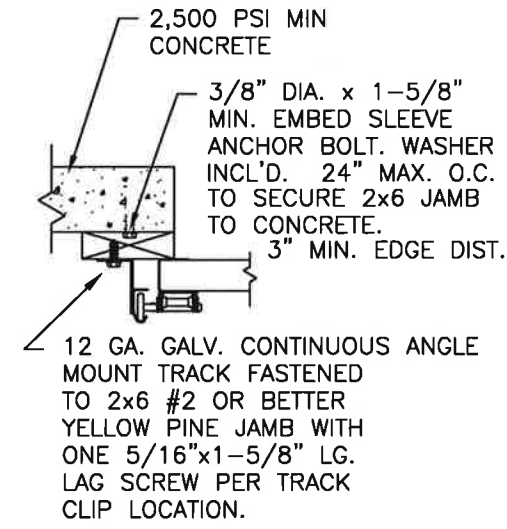
SECTION 3-3

DOOR HEIGHT	"L"
6'-6"	70"
7'-0"	76"
7'-6"	82"
8'-0"	88"
8'-6"	94"
9'-0"	100"
9'-6"	106"
10'-0"	112"
10'-6"	118"
11'-0"	124"
11'-6"	130"
12'-0"	136"
12'-6"	142"
13'-0"	148"
13'-6"	154"
14'-0"	160"
14'-6"	166"
15'-0"	172"
15'-6"	178"
16'-0"	184"
16'-6"	190"
17'-0"	196"
17'-6"	202"
18'-0"	208"
18'-6"	214"
19'-0"	220"
19'-6"	226"
20'-0"	232"

NOTE DOUBLE TRACK HEADROOM, HI-LIFT TRACK, FOLLOW-THE-ROOF TRACK, AND VERTICAL LIFT TRACK ARE AVAILABLE OPTIONS. TRACK CONFIGURATION ABOVE THE DOOR OPENING DOES NOT AFFECT THE WIND LOAD RATING.

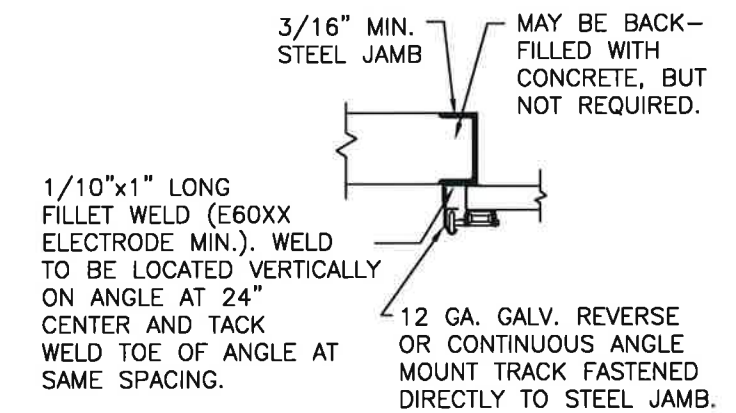


WOOD JAMB ON CONCRETE



SECTION 3-3

STEEL JAMBS



SECTION 3-3

Handwritten signature and date 4/21/22



DESIGN ENGINEER: MARK WESTERFIELD, P.E. FLORIDA P.E. #48495 NC P.E. #23832, TEXAS P.E. #91513

NOTICE: Confidential/Proprietary information of CLOPAY CORPORATION is contained herein and may not be disclosed, used, duplicated, made available, or distributed without its prior consent. Failure to observe this notice may result in liability for any damages and losses resulting therefrom.

Third Angle Projection

Unless Stated Otherwise TOLERANCES are  
 .0 = ±.031  
 .00 = ±.015  
 .000 = ±.005  
 .0000 = ±.001  
 Degrees = ±1/2'

Unless Stated Otherwise DIMENSIONS ARE IN INCHES.

Clipay CORPORATION  
 8585 Duke Boulevard  
 Mason, OH 45040 USA  
 Tel. No. 513-770-4800  
 Fax No. 513-770-4853

PART NO.: -  
 CLOPAY WINDLOAD RATING  
 W5

DESCRIPTION: M/N 904 16' WIDE DES. +32/-32 PSF  
 DRAWN BY: J. WHEELER DATE: 4/7/22 SCALE: NTS DWG. B  
 CHECKED BY: SH DATE: CHKD\_DT SHEET 2 OF 2 SIZE B  
 DWG. NO.: 105525 REV. NO. 00

4

3

2

1