

SPECIAL-LITE, INC.

SERIES 15 ALUMINUM OUTSWING GLASS DOOR LARGE AND SMALL MISSILE IMPACT (LMI & SMI)

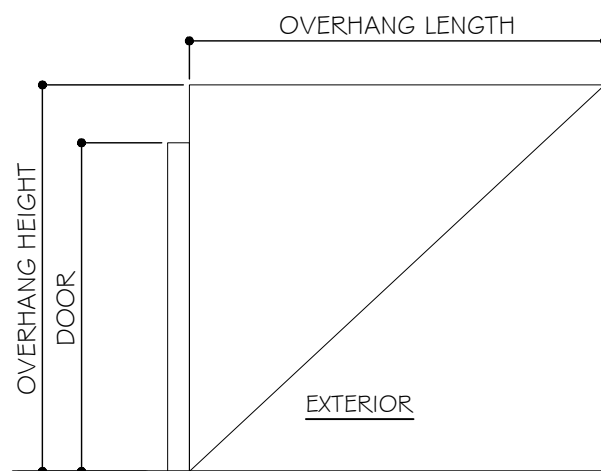
GENERAL NOTES:

- THIS PRODUCT HAS BEEN DESIGNED AND TESTED TO COMPLY WITH THE REQUIREMENTS OF THE 2006 INTERNATIONAL BUILDING CODE AND 2006 INTERNATIONAL RESIDENTIAL CODE INCLUDING HIGH VELOCITY HURRICANE ZONE (HVHZ).
- DOORS RATED FOR LARGE AND SMALL MISSILE IMPACT AND DO NOT REQUIRE SHUTTERS.
- ANCHORS SHALL BE AS LISTED, SPACED AS SHOWN ON DETAILS. ANCHORS EMBEDMENT TO BASE MATERIAL SHALL BE BEYOND WALL DRESSING OR STUCCO.
- ANCHORING OR LOADING CONDITIONS NOT SHOWN IN THESE DETAILS ARE NOT PART OF THIS APPROVAL.
- MATERIALS INCLUDING BUT NOT LIMITED TO STEEL/METAL SCREWS THAT COME INTO CONTACT WITH OTHER DISSIMILAR MATERIALS SHALL MEET THE REQUIREMENTS OF THE 2006 INTERNATIONAL BUILDING CODE AND 2006 INTERNATIONAL RESIDENTIAL CODE SECTION AS APPLICABLE.

- METAL STRUCTURES NOT BY SPECIAL LITE, INC. MUST SUPPORT LOADS IMPOSED BY DOOR SYSTEM AND TRANSFER THEM TO THE BUILDING STRUCTURE.
- 1X OR 2X WOOD BUCKS BY OTHERS MUST BE ANCHORED PROPERLY TO TRANSFER LOADS TO THE STRUCTURE.
- A LOAD DURATION FACTOR IN ALLOWABLE STRESS IS USED IN DESIGN OF ANCHORS INTO WOOD ONLY.
- DOOR FRAME: ALUMINUM 6063-T6
- ULTIMATE LOAD OBTAINED FROM ASCE 7-10, MULTIPLY BY 0.6 SHALL BE LESS THAN OR EQUAL TO MAX. DESIGN LOAD IN THIS DOCUMENT. THE DESIGN LOADS SHOWN IN THIS DOCUMENT ARE ALLOWABLE DESIGN LOADS.

LOCK:
FOR LOCK OPTIONS, SEE SHEET HW1.

NOTE:
EGRESS REQUIREMENTS TO BE REVIEWED BY BUILDING OFFICIAL.

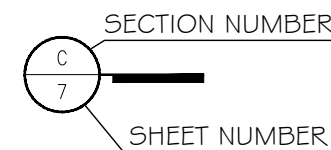


$$OH \text{ RATIO} = \frac{OVERHANG \text{ LENGTH}}{OVERHANG \text{ HEIGHT}} \geq 1$$

NOTE:
UNITS NOT APPROVED FOR WATER INFILTRATION MUST BE INSTALLED AT LOCATIONS PROTECTED BY AN OVERHANG MEETING CRITERIA AS PER ILLUSTRATION ABOVE OR IN NON-HABITABLE AREAS WHERE WATER INFILTRATION IS ACCEPTABLE.

ABBREVIATIONS AND SYMBOLS

- D.L.O. - DAYLITE OPENING
- F.H. - FRAME HEIGHT
- F.W. - FRAME WIDTH
- W/ - WITH
- W/O - WITHOUT
- O.C. - ON CENTER



PRODUCT CONTROL APPROVAL

AFISU OLABIMTAN, P.E.
TEXAS REGISTRATION
TX #63663



COVER

DATE	10/15/18
SCALE	AS SHOWN
DRAWN	T.G.
PROJECT	17-048

DRAWING NO.
TA17-02

1 OF 15

NO	DATE	REVISIONS DESCRIPTION

MCY

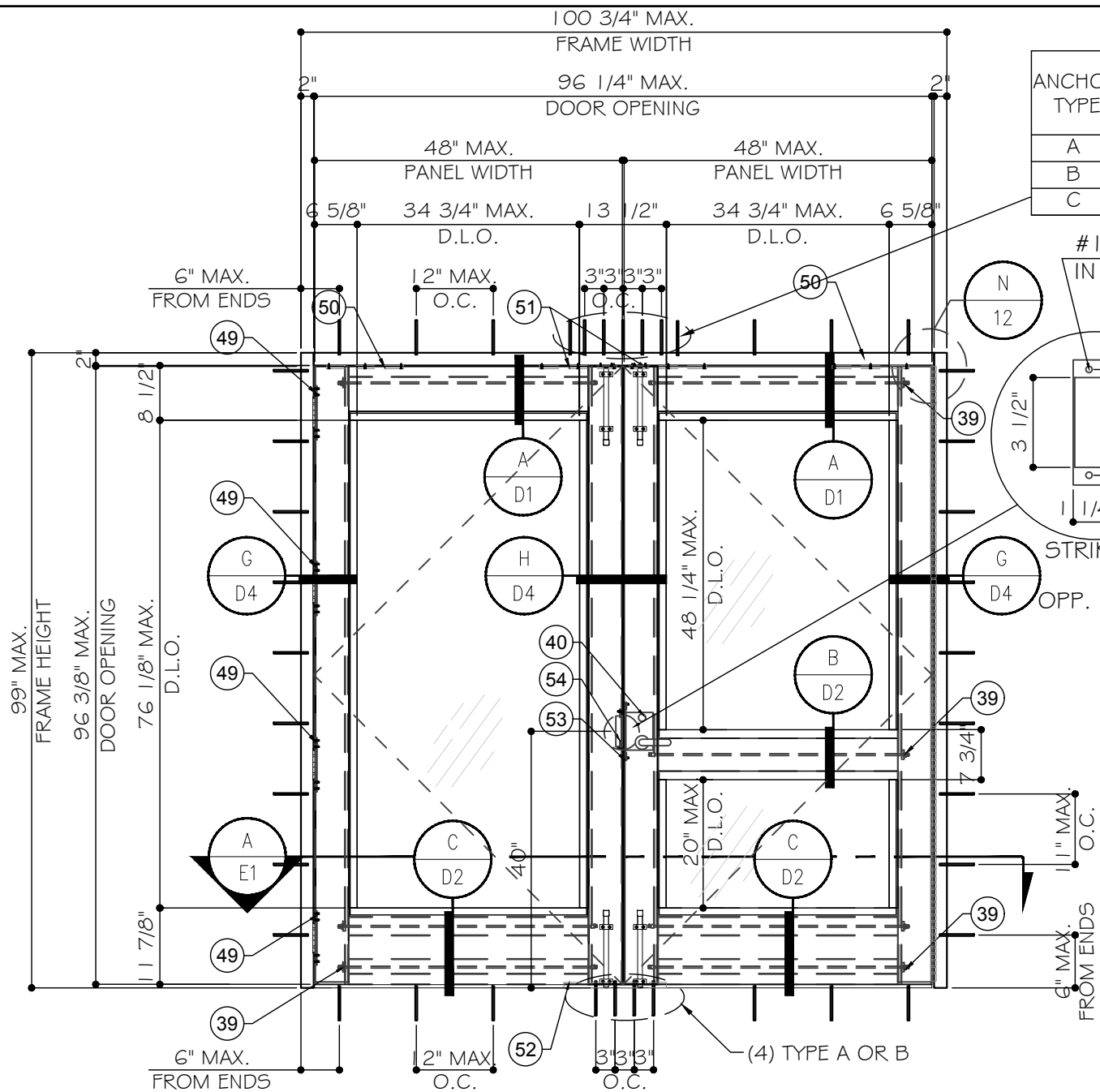
MCY ENGINEERING, INC.
GLAZING CONSULTANTS

8501 SW 124 AVE. STE. 205A P: 305.271.0117
MIAMI, FL 33183 F: 786.573.5063
www.MCYEngineering.com MCY.Engineering@Att.net

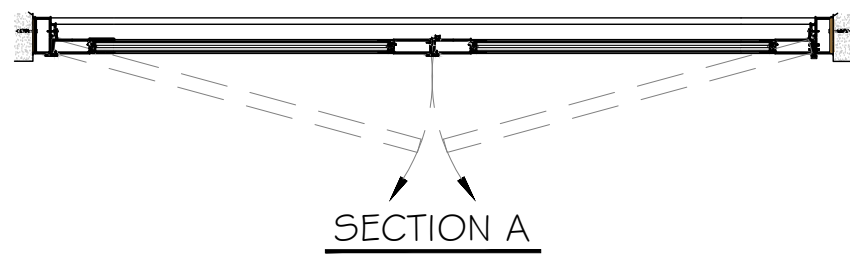
SERIES 15 ALUMINUM OUTSWING GLASS DOORS - LMI & SMI

SPECIAL-LITE, INC.
860 SOUTH WILLIAMS STREET
P.O. BOX 6
DECATUR, MI 49045
WWW.SPECIAL-LITE.COM





TYPICAL EXTERIOR ELEVATION (XX)



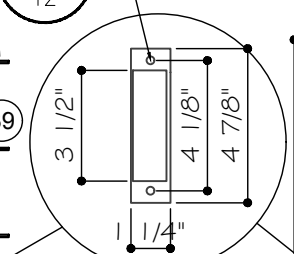
SECTION A

DESIGN LOADS (FOR SIZES SHOWN OR SMALLER) AS PERMITTED BY IBC/IRC	DESIGN LOADS (FOR SIZES SHOWN OR SMALLER) AS PERMITTED BY IBC/IRC
APPROVED FOR WATER INFILTRATION	NOT APPROVED FOR WATER INFILTRATION
+ 47.0 PSF - 65.0 PSF	+ 65.0 PSF - 65.0 PSF

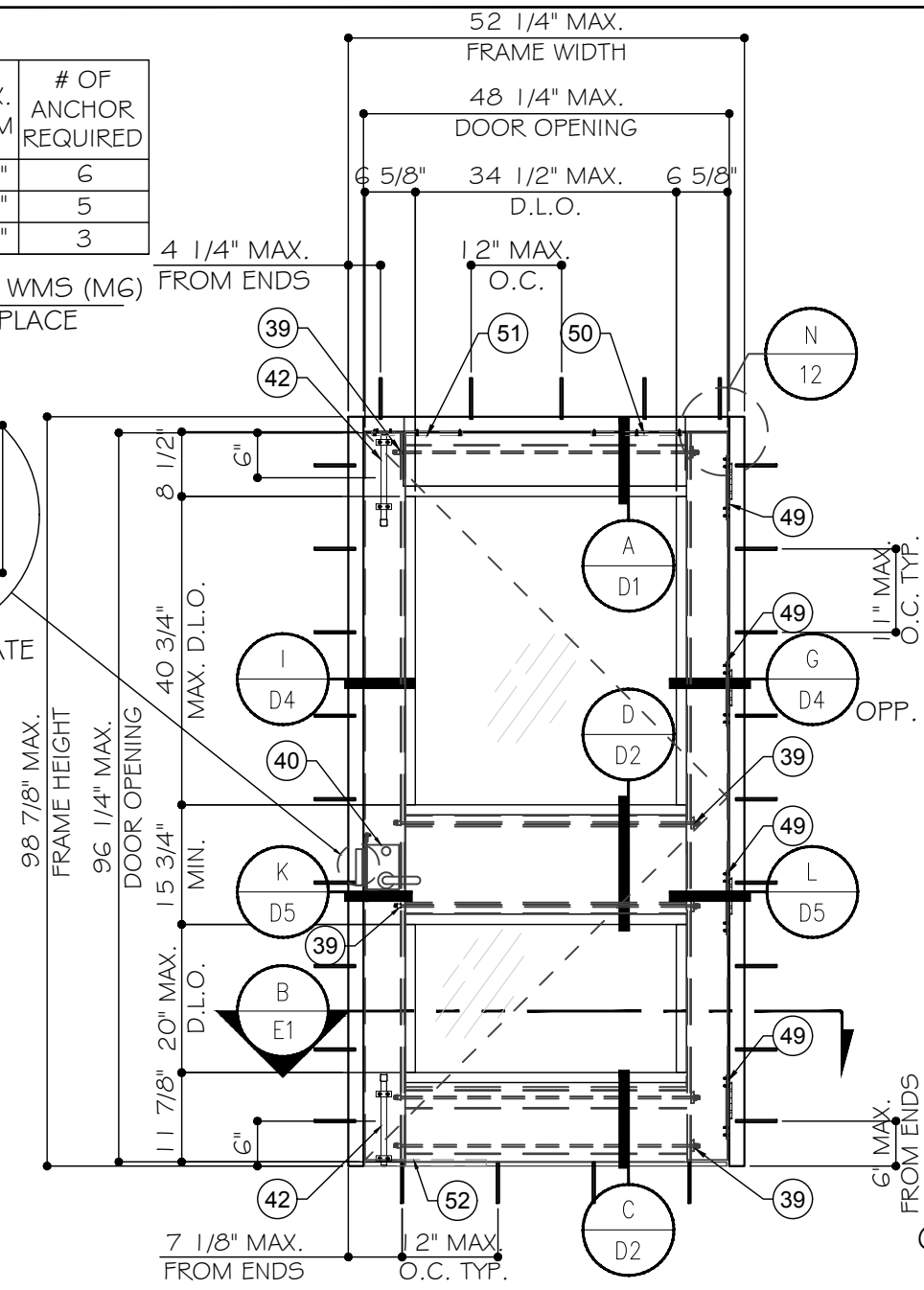
FOR LOCK OPTIONS REFER TO SHEET HW1

ANCHOR TYPE	MAX. SHIM	# OF ANCHOR REQUIRED
A	1/2"	6
B	1/2"	5
C	1/4"	3

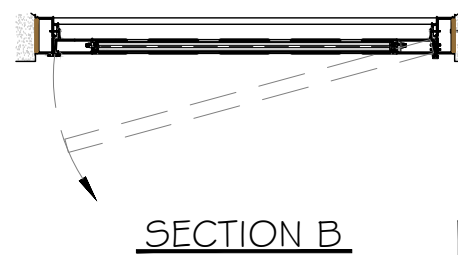
#12-24 WMS (M6) IN TWO PLACE



STRIKE PLATE

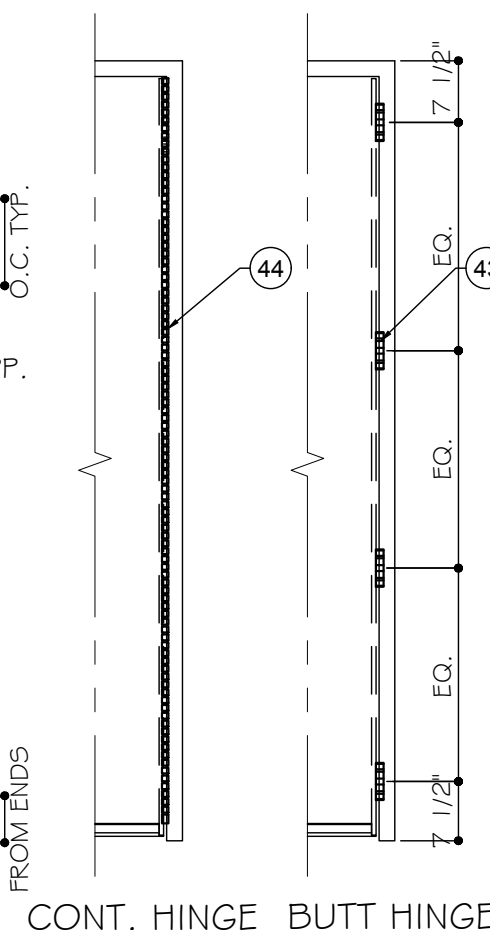


TYPICAL EXTERIOR ELEVATION (X)



SECTION B

DESIGN LOADS (FOR SIZES SHOWN OR SMALLER) AS PERMITTED BY IBC/IRC
WITH OR WITHOUT WATER INFILTRATION REQUIREMENTS
+ 65.0 PSF - 65.0 PSF



HINGE LAYOUT

PRODUCT CONTROL APPROVAL

AFISU OLABIMTAN, P.E.
TEXAS REGISTRATION
TX #63663

NO.	DATE	DESCRIPTION

MCY ENGINEERING, INC.
GLAZING CONSULTANTS

8501 SW 124 AVE. STE. 205A P: 305.271.0117
MIAMI, FL 33183 F: 786.573.5063

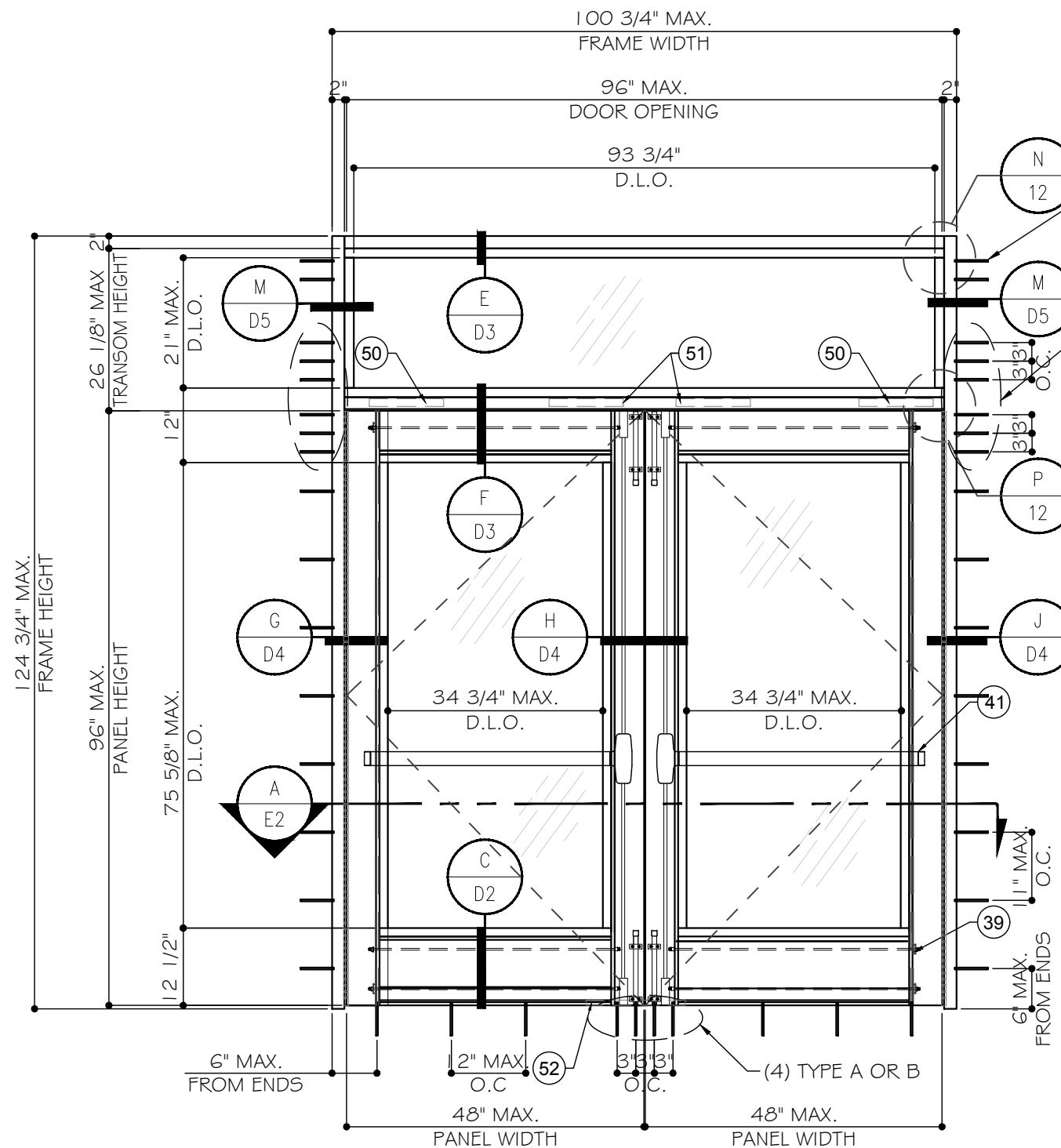
www.MCYEngineering.com MCY.Engineering@Att.net

SPECIAL-LITE, INC.
860 SOUTH WILLIAMS STREET
P.O. BOX 6
DECATUR, MI 49045
WWW.SPECIAL-LITE.COM

SERIES 15 ALUMINUM OUTSWING GLASS DOORS - LMI & SMI

Special-Lite
Doors with more life.

E1	
DATE	10/15/18
SCALE	AS SHOWN
DRAWN	T.G.
PROJECT	17-048
DRAWING NO. TA17-02	
2 OF 15	



TYPICAL EXTERIOR ELEVATION (O/XX)

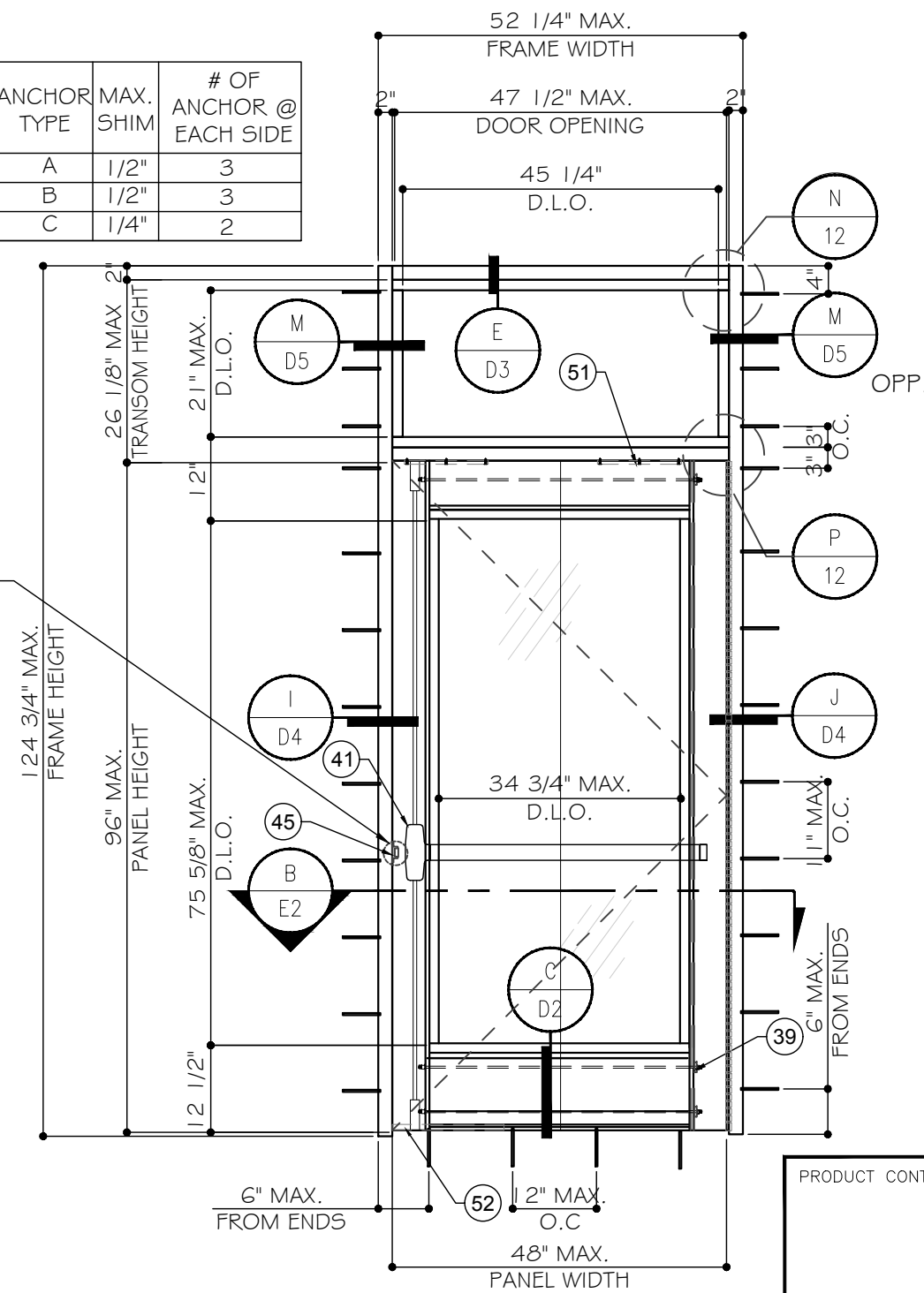
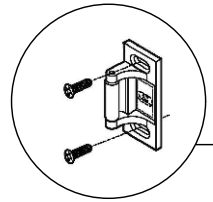


SECTION A

FOR LOCK OPTIONS REFER TO SHEET HW I

DESIGN LOADS (FOR SIZES SHOWN OR SMALLER) AS PERMITTED BY IBC/IRC	DESIGN LOADS (FOR SIZES SHOWN OR SMALLER) AS PERMITTED BY IBC/IRC
APPROVED FOR WATER INFILTRATION	NOT APPROVED FOR WATER INFILTRATION
+ 47.0 PSF - 65.0 PSF	+ 65.0 PSF - 65.0 PSF

ANCHOR TYPE	MAX. SHIM	# OF ANCHOR @ EACH SIDE
A	1/2"	3
B	1/2"	3
C	1/4"	2



TYPICAL EXTERIOR ELEVATION (O/X)



SECTION B

PRODUCT CONTROL APPROVAL

AFISU OLABIMTAN, P.E.
TEXAS REGISTRATION
TX #63663



NO	DATE	DESCRIPTION

MCY
MCY ENGINEERING, INC.
 GLAZING CONSULTANTS
 8501 SW 124 AVE. STE. 205A P. 305.271.0117
 MIAMI, FL 33183 F. 786.573.5063
 www.MCYEngineering.com MCY.Engineering@Att.net

SERIES 15 ALUMINUM OUTSWING GLASS DOORS - LMI & SMI
 SPECIAL-LITE, INC.
 860 SOUTH WILLIAMS STREET
 P.O. BOX 6
 DECATUR, MI 49045
 WWW.SPECIAL-LITE.COM

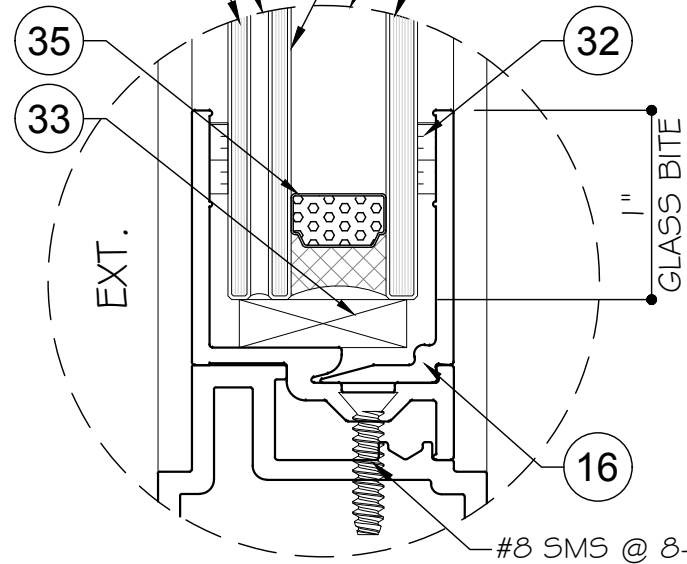


E2	
DATE	07/05/17
SCALE	AS SHOWN
DRAWN	T.G.
PROJECT	17-048

DRAWING NO.
TA17-02

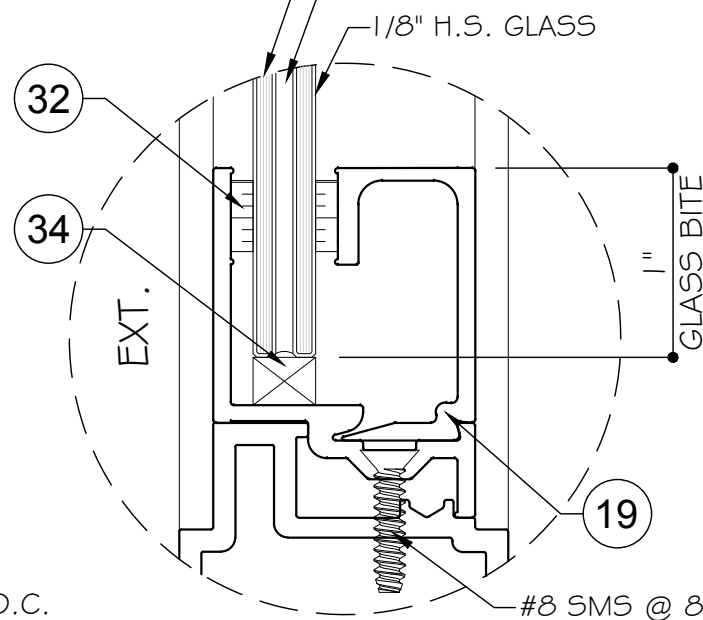
0.090" BUTACITE PVB INTERLAYER
BY 'KURARAY AMERICA, INC.'

1/8" H.S. GLASS
1/2" AIR SPACE
1/8" H.S. GLASS
1/4" TEMP. GLASS



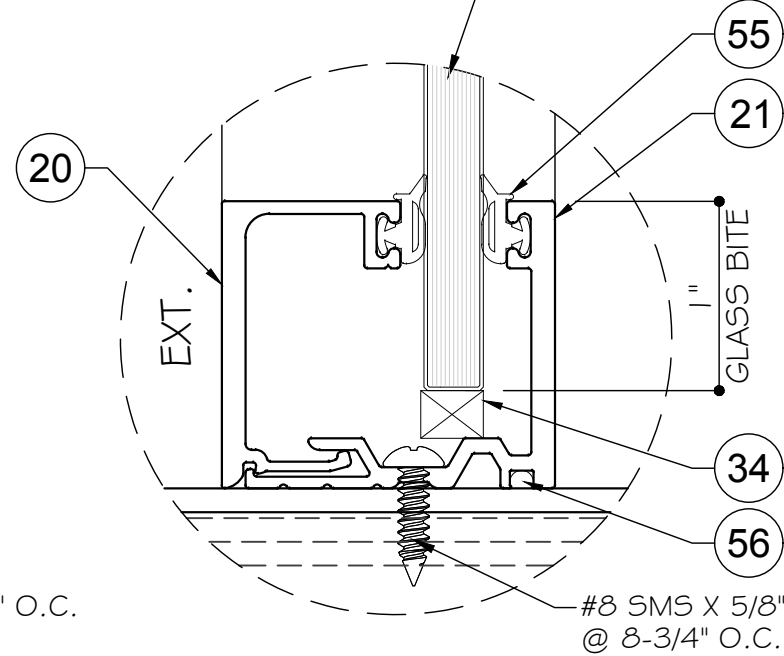
GLASS TYPE 'G1'
1" NOMINAL OVERALL

1/8" H.S. GLASS
0.090" BUTACITE PVB INTERLAYER
BY 'KURARAY AMERICA, INC.'



GLASS TYPE 'G2'
5/16" NOMINAL OVERALL

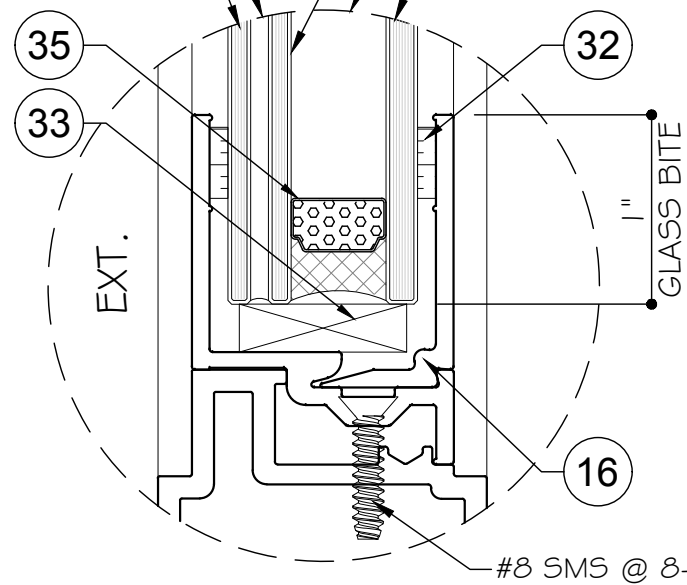
3/8" POLYCARBONATE



GLASS TYPE 'G3'
3/8" NOMINAL OVERALL
TRANSOM DETAIL

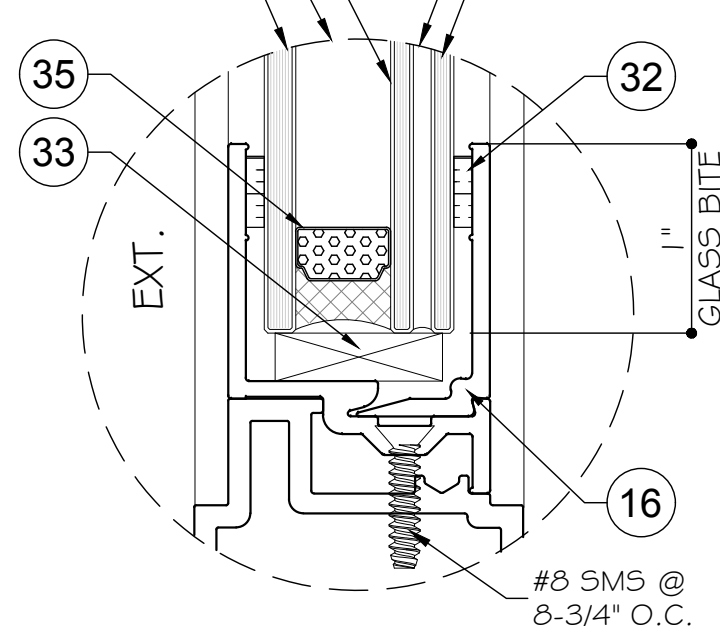
0.090" BUTACITE PVB INTERLAYER
BY 'KURARAY AMERICA, INC.'

1/8" H.S. GLASS
3/8" AIR SPACE
1/8" H.S. GLASS
1/4" TEMP. GLASS



GLASS TYPE 'G4'
1" NOMINAL OVERALL

1/8" H.S. GLASS
1/4" AIR SPACE
0.090" BUTACITE PVB INTERLAYER
BY 'KURARAY AMERICA, INC.'



GLASS TYPE 'G5'
1" NOMINAL OVERALL

NOTE:
GLASS COMPLIES WITH ASTM
E1300-09 (3 SEC. GUSTS).

NO	DATE	DESCRIPTION

MCY ENGINEERING, INC.
GLAZING CONSULTANTS

8501 SW 124 AVE. STE. 205A P: 305.271.0117
MIAMI, FL 33183 F: 786.573.5063

www.MCYEngineering.com MCY.Engineering@Att.net

SERIES 15 ALUMINUM OUTSWING GLASS DOORS - LMI & SMI

SPECIAL-LITE, INC.
860 SOUTH WILLIAMS STREET
P.O. BOX 6
DECATUR, MI 49045
WWW.SPECIAL-LITE.COM



PRODUCT CONTROL APPROVAL

AFISU OLABIMTAN, P.E.
TEXAS REGISTRATION
TX #63663

10-18-18

G1	
DATE	10/15/18
SCALE	AS SHOWN
DRAWN	T.G.
PROJECT	17-048
DRAWING NO.	
TA17-02	
4 OF 15	

FRAME HEIGHT

DOOR OPENING

D.L.O.

EXTERIOR

3/8"-16 STEEL TIE ROD

1/8"

1/2" MAX. SHIM

MIN EDGE DIST.

CONCRETE $f_c = 3000 \text{ psi MIN.}$

TYPICAL ANCHOR SEE ELEVATION FOR SPACING

MIN. EMBED

#8 X 5/8" S.S. SMS, 8 3/4" O.C.

31

9

15

14

36

2

30

16

12

28

5

6

50 51

25 14" O.C.

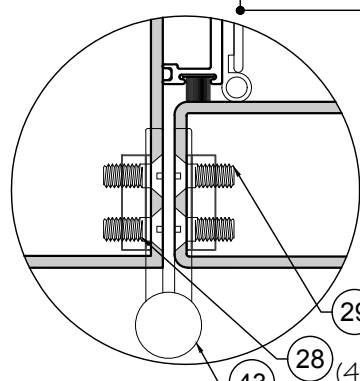
#6 X 1/2" SMS

10

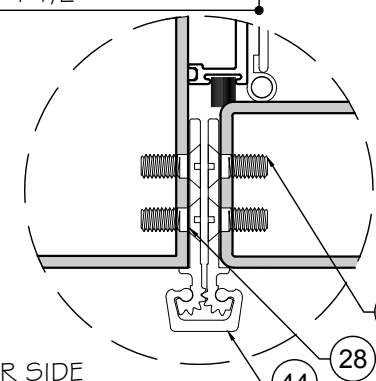
A DETAIL DI OPTION

GLASS OPTIONS INTERCHANGEABLE. SEE COVER SHEET FOR GLAZING OPTIONS.

1 9/16" 4 1/2"



43 DESIGN HARDWARE BALL BEARING HINGE



44 SELECT PRODUCTS CONTINUOUS HINGE

HINGE OPTIONS

28 (4) PER SIDE

28 (15) PER SIDE

MIN EDGE DIST.

METAL STRUCTURE

TYPICAL ANCHOR SEE ELEVATION FOR SPACING

MIN. EMBED

1/8" MIN. THK.

31

1/4" MAX. SHIM

5

A DETAIL DI OPTION

MIN. EDGE DIST.

MIN. EMBED

TYPICAL ANCHOR SEE ELEVATION FOR SPACING

MIN. EDGE DIST.

31

1/2" MAX. SHIM

5

A DETAIL DI OPTION

MIN EDGE DIST.

2 BY WOOD BUCK OR WOOD STRUCTURE

MIN. EMBED

31

1/2" MAX. SHIM

5

A DETAIL DI OPTION

TYPICAL ANCHORS:

(SEE ELEVATIONS FOR SPACING)

TYPE 'A': 1/4" DIA. ITW TAPCON (Fu=120 KSI, Fy=92 KSI) 1-1/2" MIN. EMBED INTO WOOD STRUCTURE OR THRU 1X OR 2X WOOD BUCK INTO CONCRETE / MASONRY 1-1/2" MIN. EMBED INTO CONCRETE / MASONRY

TYPE 'B': 1/4" DIA. ELCO ULTRACON (Fu=177 KSI, Fy=155 KSI) 1-1/2" MIN. EMBED INTO WOOD STRUCTURE OR THRU 1X OR 2X WOOD BUCK INTO CONCRETE / MASONRY 1-1/2" MIN. EMBED INTO CONCRETE / MASONRY

TYPE 'C': #14 SMS OR TEKS SELF DRILLING SCREW (GRADE 5) INTO METAL STRUCTURE

SUBSTRATE:

CONCRETE: fc=3 KSI MIN. (HEAD/SILL OR JAMB) MASONRY/CONCRETE BLOCK: fc= 2KSI MIN. (JAMB ONLY) WOOD: SG=0.55 MIN. (HEAD/JAMB) STEEL : 1/8" MIN. THK., A36 MIN. (HEAD/JAMB)

TYPICAL EDGE DISTANCE:

INTO CONCRETE / MASONRY: 2-1/2" MIN. INTO WOOD: 1" MIN. INTO METAL: 3/4" MIN.

PRODUCT CONTROL APPROVAL

AFISU OLABIMTAN, P.E. TEXAS REGISTRATION TX #63663



10-18-18

Table with 2 columns: NO, DATE, DESCRIPTION

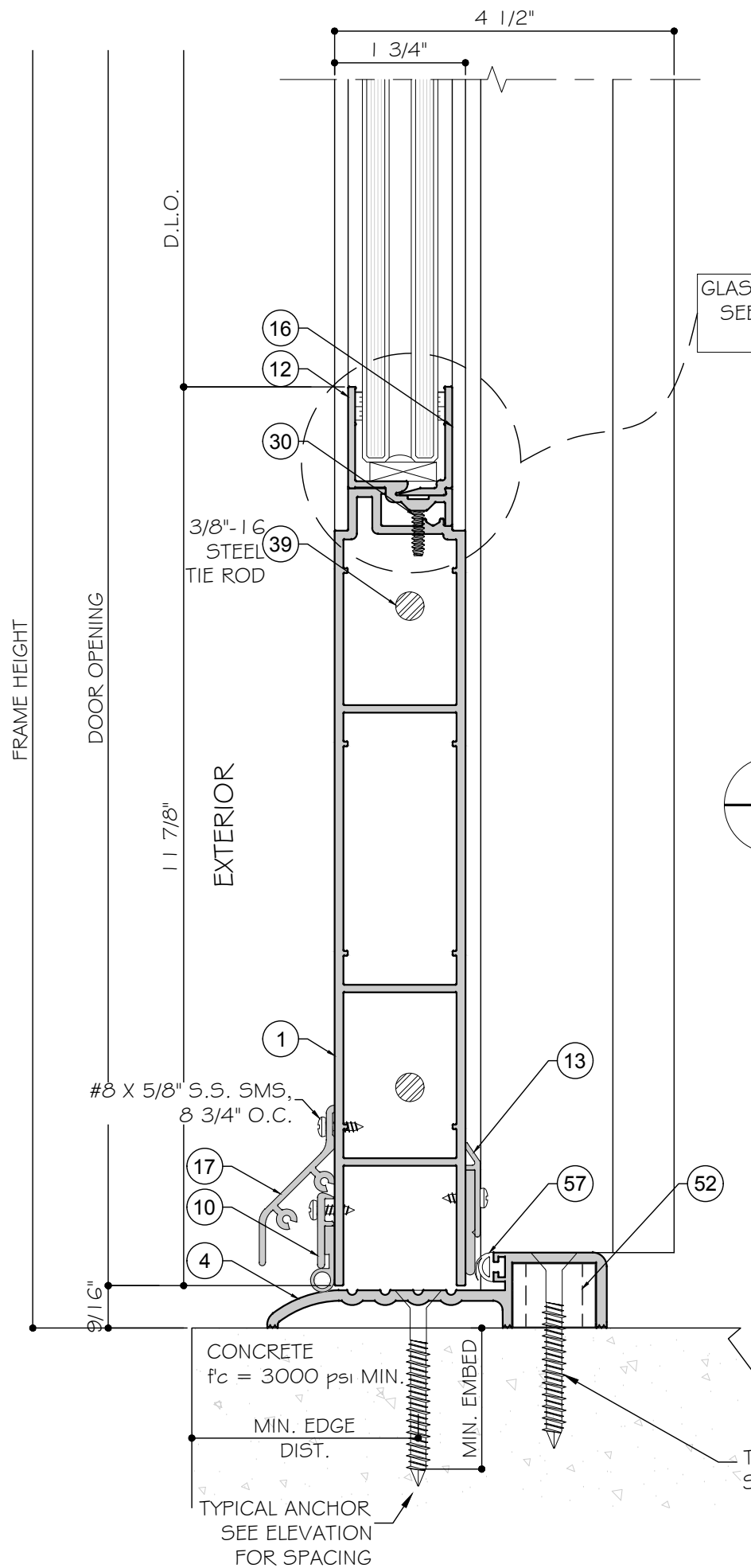
MCY ENGINEERING, INC. GLAZING CONSULTANTS 8501 SW 124 AVE. STE. 205A P. 305.271.0117 MIAMI, FL 33183

SPECIAL-LITE, INC. 860 SOUTH WILLIAMS STREET P.O. BOX 6 DECATUR, MI 49045 WWW.SPECIAL-LITE.COM



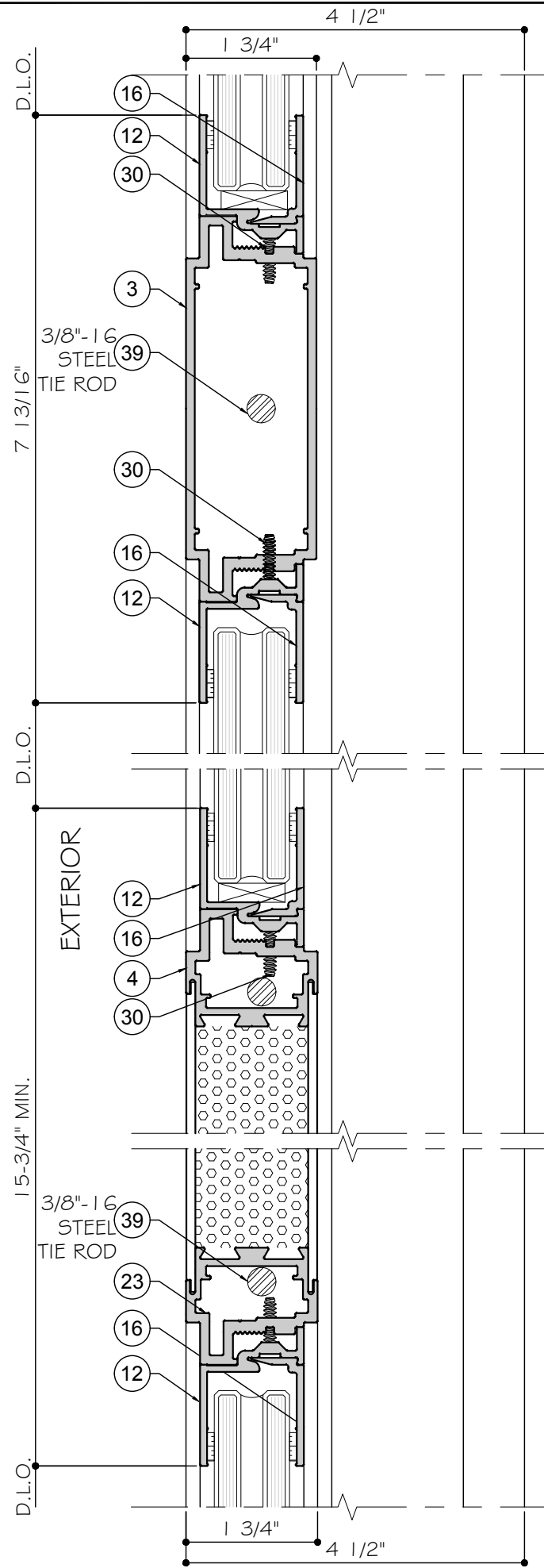
Table with 2 columns: DATE, SCALE, DRAWN, PROJECT

DRAWING NO. TA17-02



GLASS OPTIONS INTERCHANGEABLE.
SEE COVER SHEET FOR GLAZING
OPTIONS.

C
D2
DETAIL



B
D2
DETAIL

D
D2
DETAIL

PRODUCT CONTROL APPROVAL

AFISU OLABIMTAN, P.E.
TEXAS REGISTRATION
TX #63663

NO	DATE	REVISIONS	DESCRIPTION

MCY ENGINEERING, INC.
GLAZING CONSULTANTS

8501 SW 124 AVE. STE. 205A P: 305.271.0117
MIAMI, FL 33183 F: 786.573.5063

www.MCYEngineering.com MCY.Engineering@Att.net

SERIES 15 ALUMINUM OUTSWING GLASS DOORS - LMI & SWI

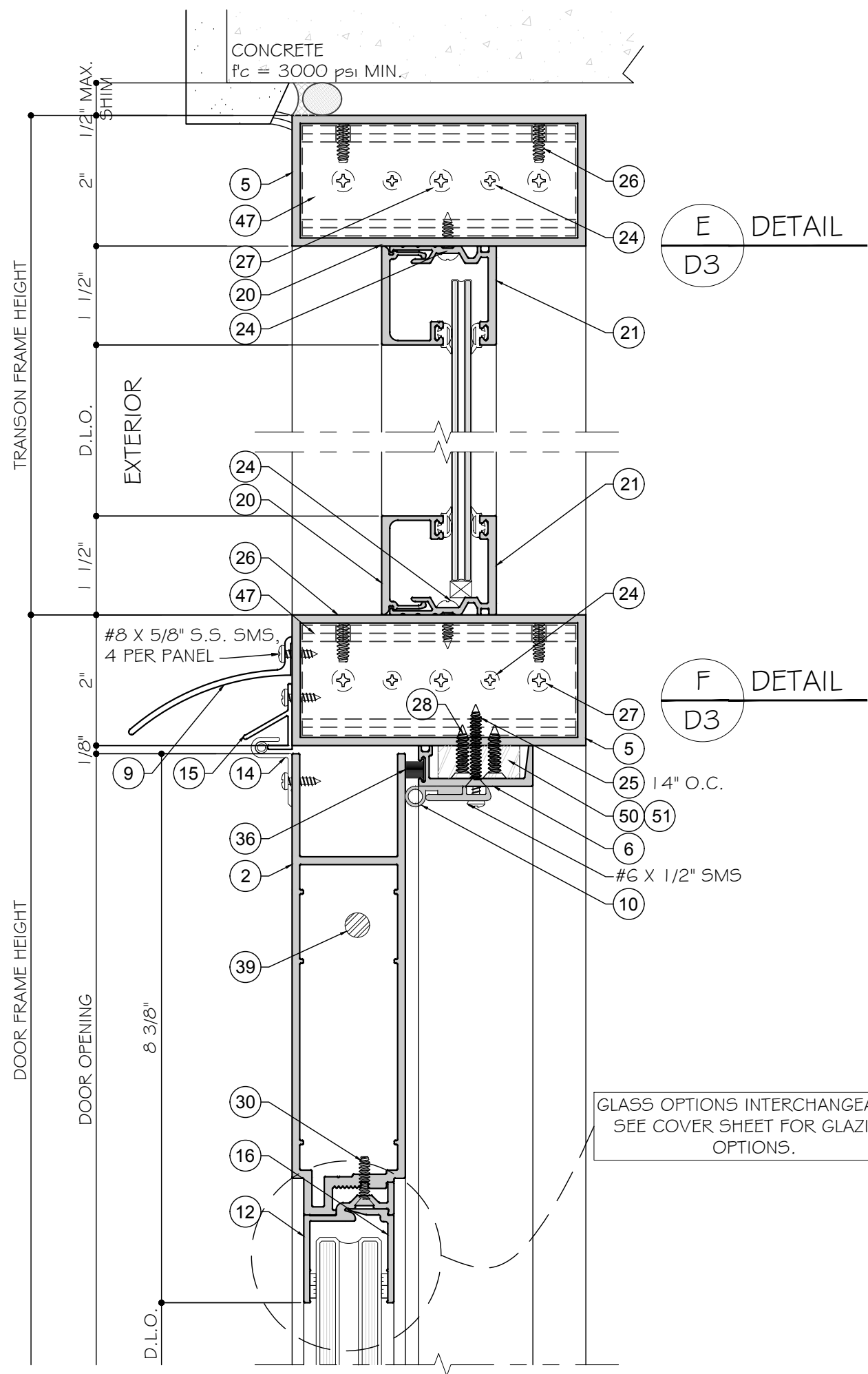
SPECIAL-LITE, INC.
860 SOUTH WILLIAMS STREET
P.O. BOX 6
DECATUR, MI 49045
WWW.SPECIAL-LITE.COM



D2

DATE	10/15/18
SCALE	AS SHOWN
DRAWN	T.G.
PROJECT	17-048

DRAWING NO.
TA17-02



E
D3
DETAIL

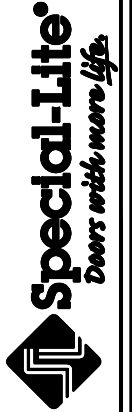
F
D3
DETAIL

GLASS OPTIONS INTERCHANGEABLE.
SEE COVER SHEET FOR GLAZING
OPTIONS.

NO	DATE	REVISIONS	DESCRIPTION

MCY
MCY ENGINEERING, INC.
 GLAZING CONSULTANTS
 8501 SW 124 AVE. STE. 205A P: 305.271.0117
 MIAMI, FL 33183 F: 786.573.5063
 www.MCYEngineering.com MCY.Engineering@Att.net

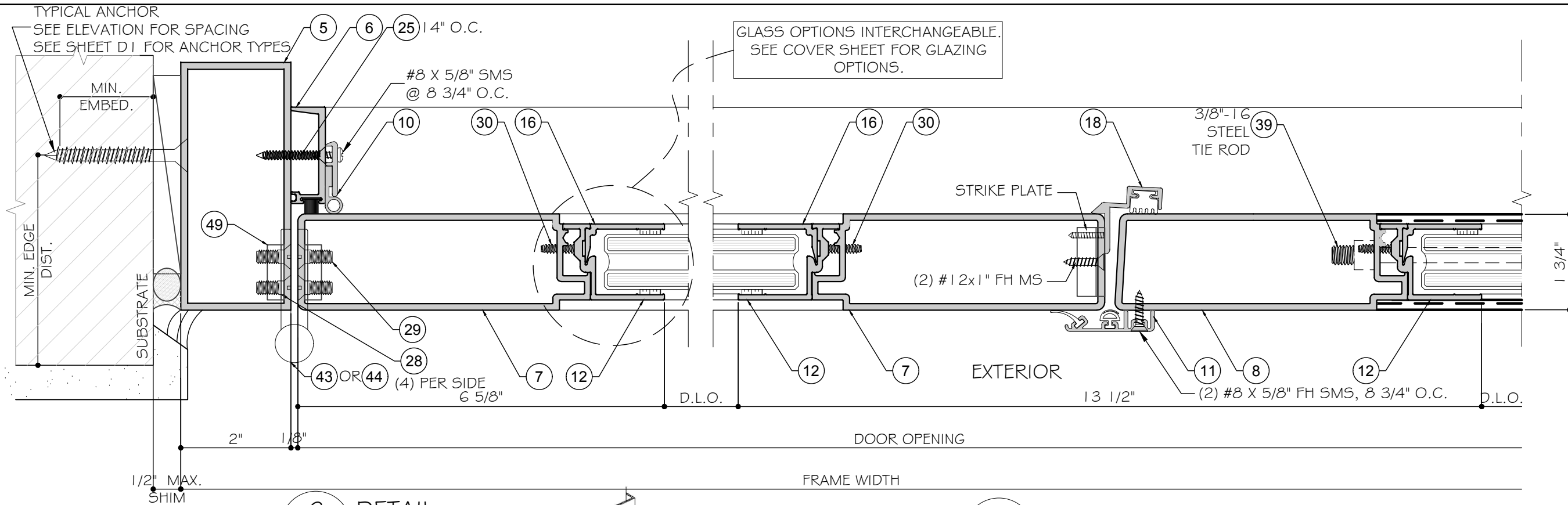
SERIES 15 ALUMINUM OUTSWING GLASS DOORS - LMI & SWI
 SPECIAL-LITE, INC.
 860 SOUTH WILLIAMS STREET
 P.O. BOX 6
 DECATUR, MI 49045
 WWW.SPECIAL-LITE.COM



PRODUCT CONTROL APPROVAL

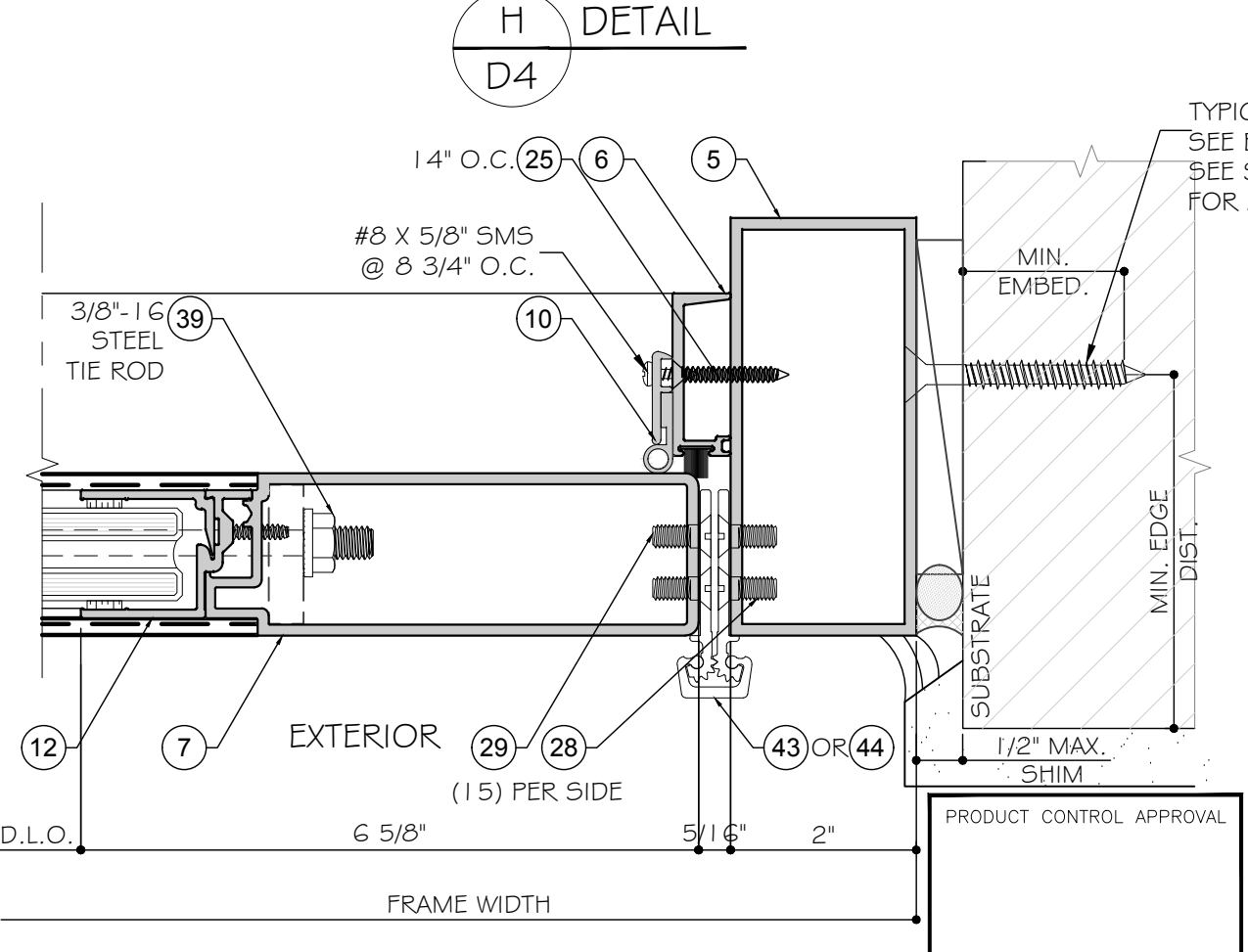
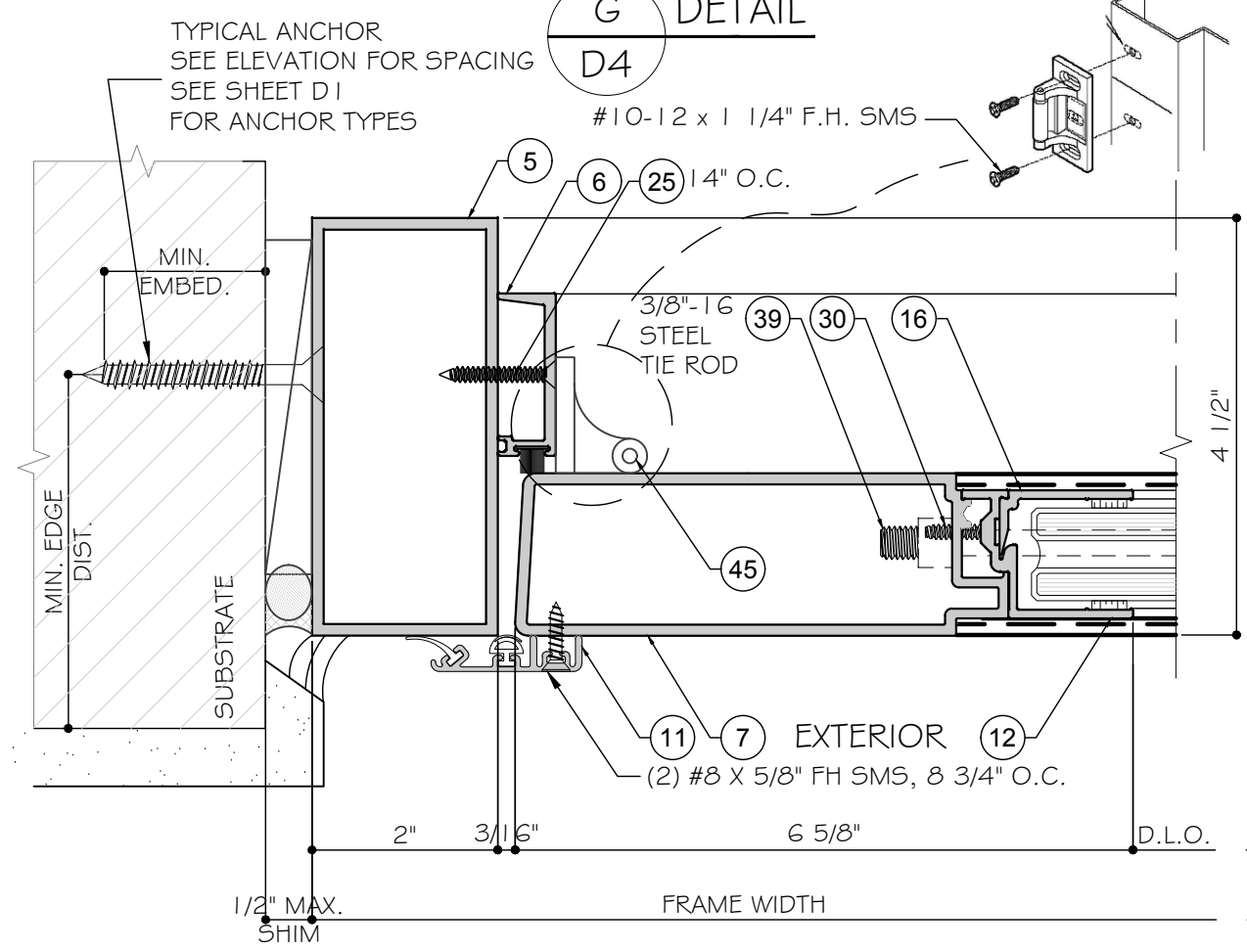
AFISU OLABIMTAN, P.E.
 TEXAS REGISTRATION
 TX #63663

D3	
DATE	10/15/18
SCALE	AS SHOWN
DRAWN	T.G.
PROJECT	17-048
DRAWING NO. TA17-02	
7 OF 15	



G DETAIL
D4

H DETAIL
D4



I DETAIL
D4

J DETAIL
D4

PRODUCT CONTROL APPROVAL

AFISU OLABIMTAN, P.E.
TEXAS REGISTRATION
TX #63663

D4	
DATE	10/15/18
SCALE	AS SHOWN
DRAWN	T.G.
PROJECT	17-048

DRAWING NO.
TA17-02

REVISIONS

NO	DATE	DESCRIPTION

MCY

MCY ENGINEERING, INC.
GLAZING CONSULTANTS

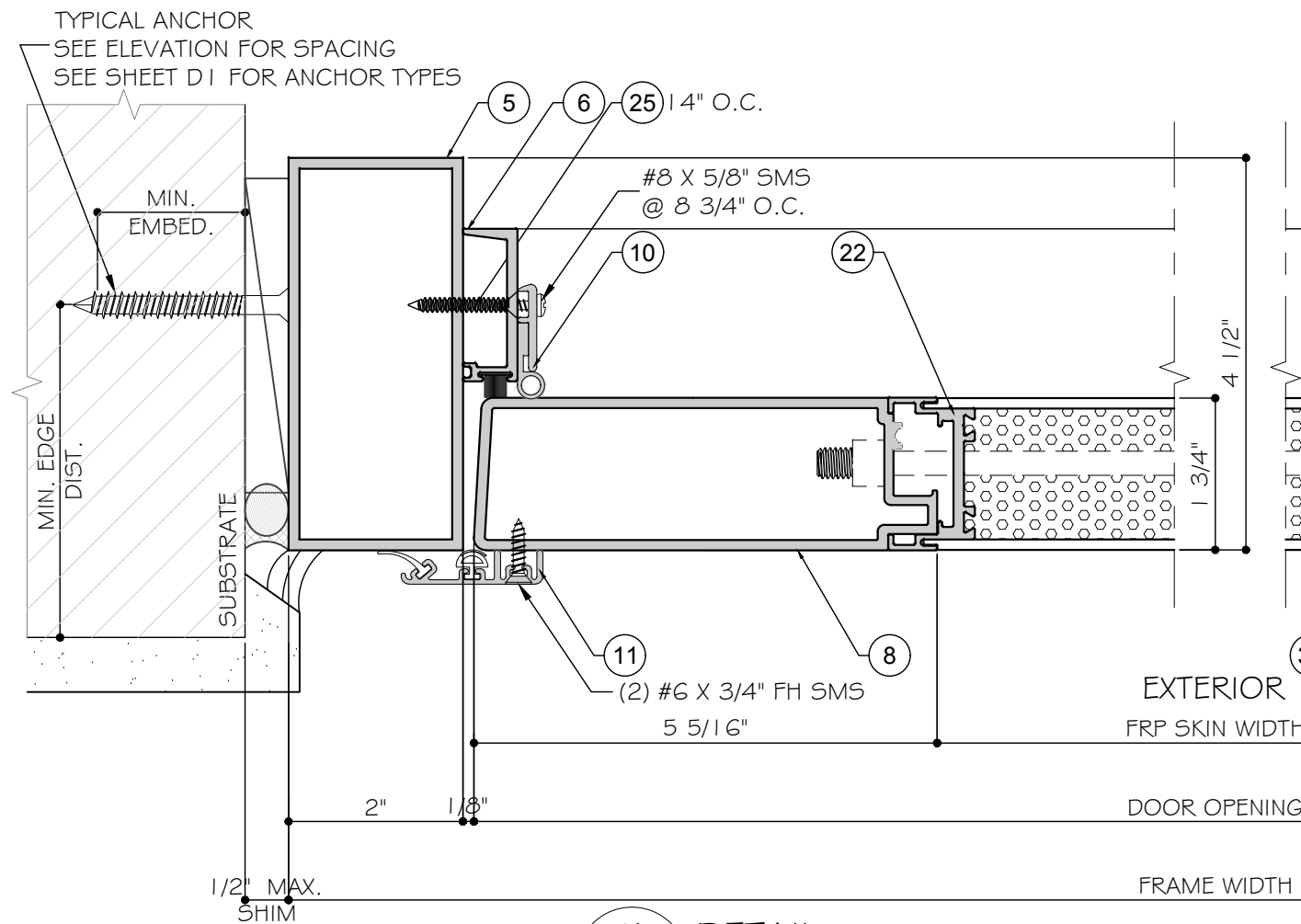
8501 SW 124 AVE. STE. 205A P: 305.271.0117
MIAMI, FL 33183 F: 786.573.5063

www.MCYEngineering.com MCY.Engineering@Att.net

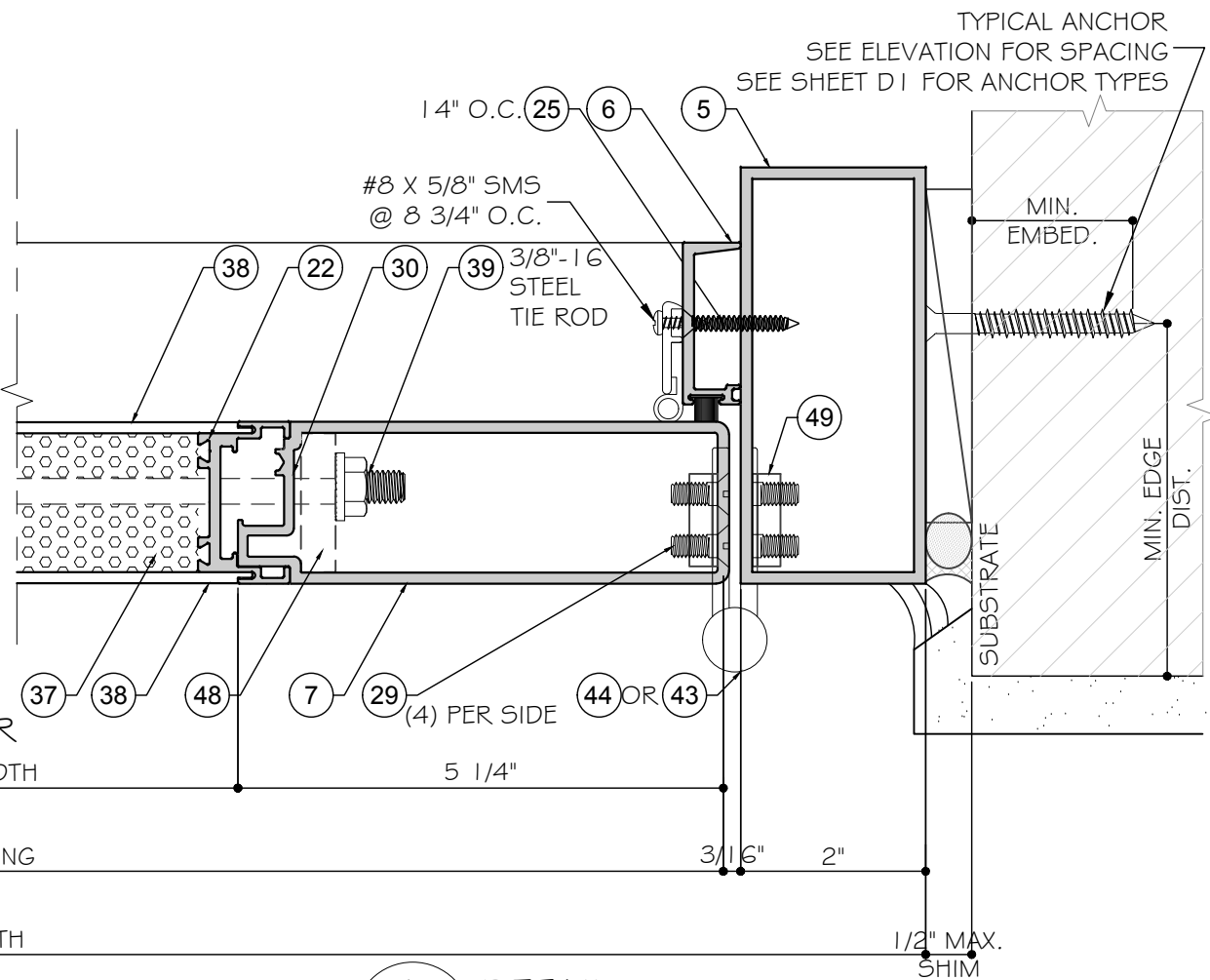
SERIES 15 ALUMINUM OUTSWING GLASS DOORS - LMI & SMI

SPECIAL-LITE, INC.
860 SOUTH WILLIAMS STREET
P.O. BOX 6
DECATUR, MI 49045
WWW.SPECIAL-LITE.COM

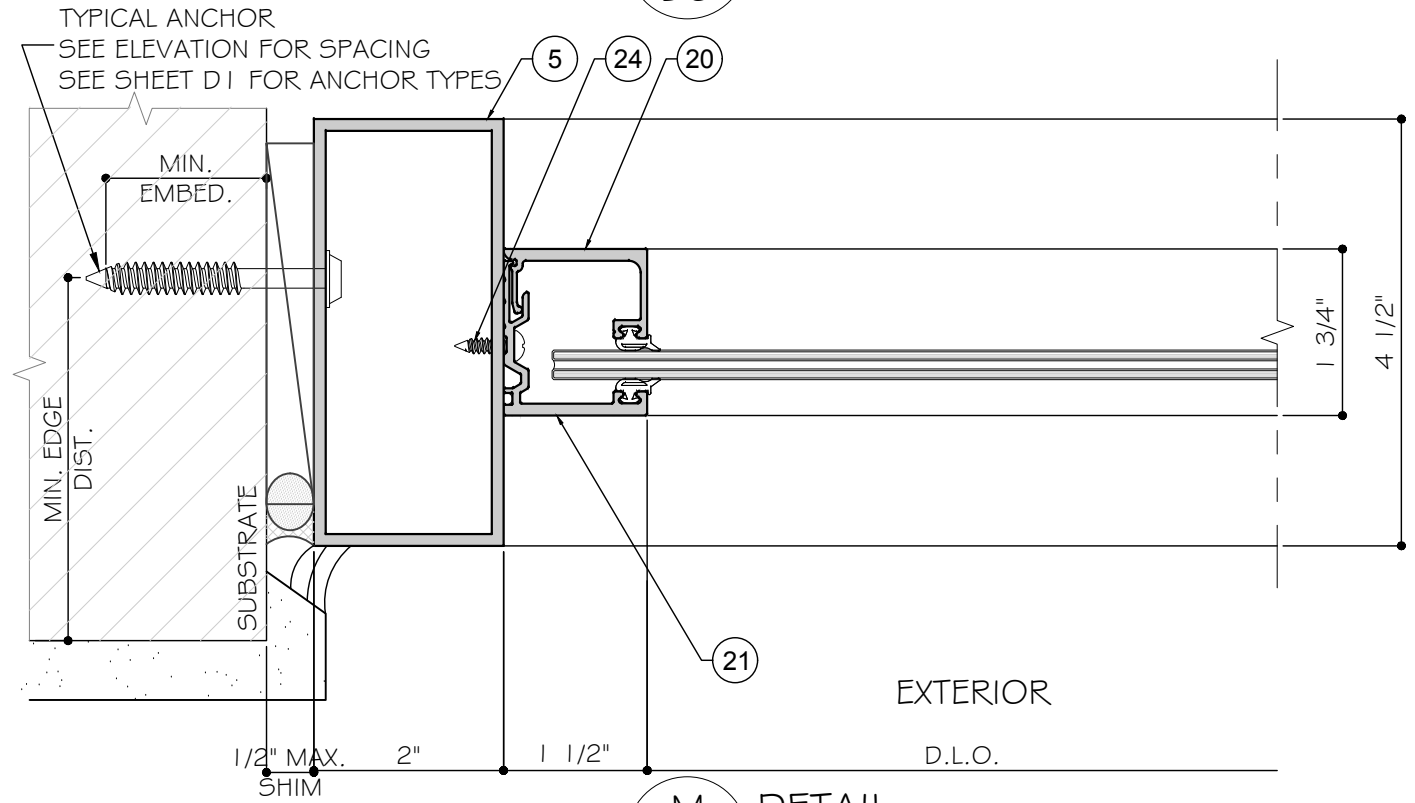
Special-Lite
Doors with more life.



K
D5
DETAIL



L
D5
DETAIL



M
D5
DETAIL

PRODUCT CONTROL APPROVAL

AFISU OLABIMTAN, P.E.
TEXAS REGISTRATION
TX #63663

D5	
DATE	10/15/18
SCALE	AS SHOWN
DRAWN	T.G.
PROJECT	17-048
DRAWING NO. TA17-02	
9 OF 15	

NO.	DATE	DESCRIPTION

MCY ENGINEERING, INC.
GLAZING CONSULTANTS

8501 SW 124 AVE. STE. 205A P: 305.271.0117
MIAMI, FL 33183 F: 786.573.5063

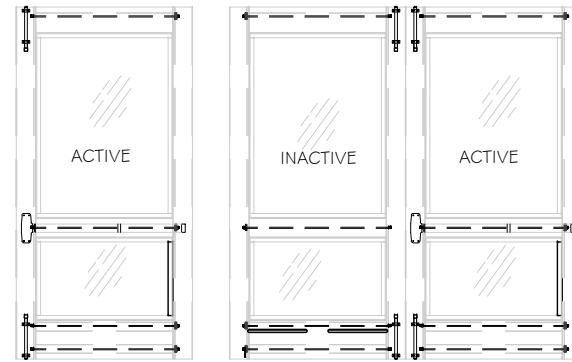
www.MCYEngineering.com MCY.Engineering@Att.net

SERIES 15 ALUMINUM OUTSWING GLASS DOORS - LMI & SMI

SPECIAL-LITE, INC.
860 SOUTH WILLIAMS STREET
P.O. BOX 6
DECATUR, MI 49045
WWW.SPECIAL-LITE.COM



APPROVED CONFIGURATIONS AND HARDWARE

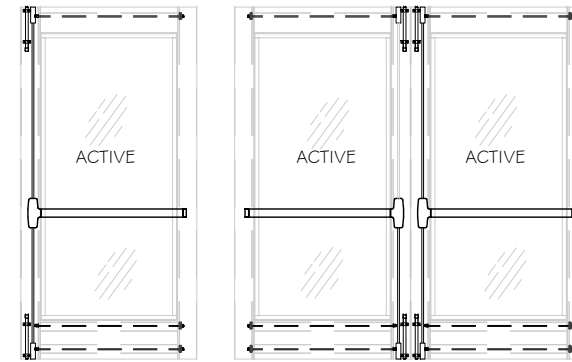


OPTION 1
 LOCK:
 ACTIVE PANEL: VON DUPRIN MORTISE LOCK 9975EO @ 39" FROM BOTTOM

SURFACE BOLT
 INACTIVE PANEL: IVES SB360
 ACTIVE PANEL: ABH HD1825
 ENGAGEMENT: 13/16" @ THRESHOLD AND 5/8" @ FRAME HEAD.

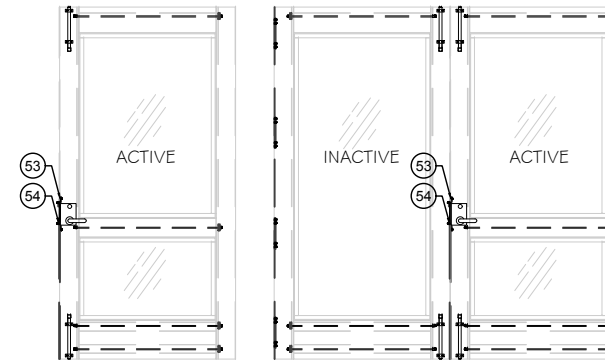
FLUSH BOLT:
 INACTIVE PANEL: IVES 458
 ENGAGEMENT: 9/16" @ THRESHOLD AND FRAME HEAD

DOOR CLOSER: ALLEGION LCN 4040 SERIES



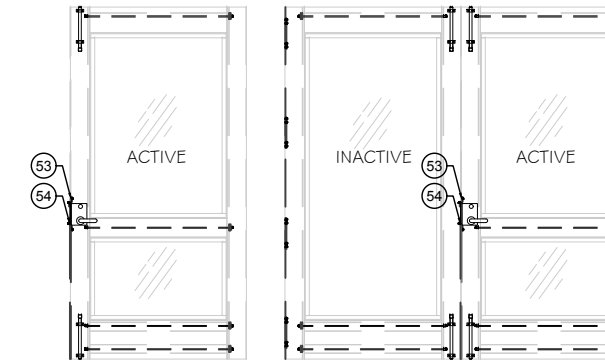
OPTION 2
 LOCK:
 ACTIVE PANEL: VON DUPRIN CVR 9947EO PANIC DEVICE W/ 2 POINT LOCK SYSTEM.

SURFACE BOLTS:
 ACTIVE PANEL: IVES SB360
 ENGAGEMENT: 13/16" @ THRESHOLD AND 9/16" @ FRAME HEAD.



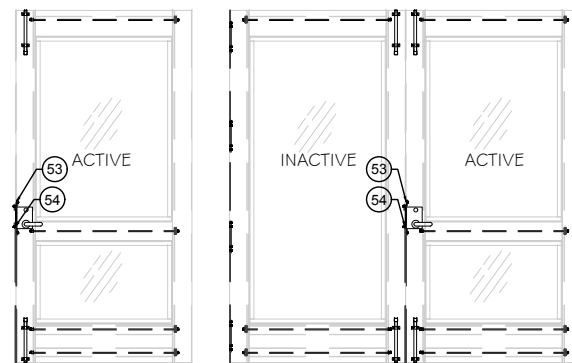
OPTION 3
 LOCK:
 ACTIVE PANEL: SCHLAGE L9453P SERIES MORTISE LOCK AND DEADBOT

SURFACE BOLTS:
 INACTIVE PANEL: ABH SURFACE BOLTS
 ACTIVE PANEL: IVES SB360
 ENGAGEMENT: 15/16" @ THRESHOLD AND 7/8" @ FRAME HEAD.



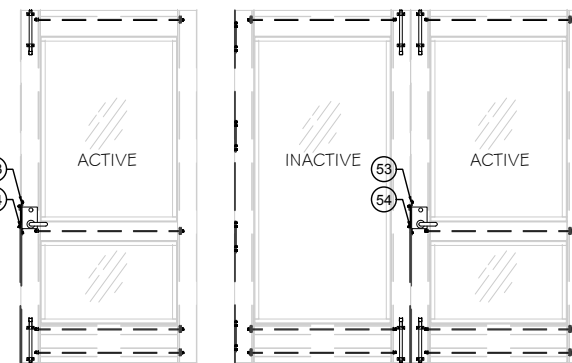
OPTION 4
 LOCK:
 ACTIVE PANEL: DORMA MORTISE LOCK SLI I HD WITH SURFACE MOUNT STRIKE PLATE

SURFACE BOLTS:
 INACTIVE PANEL: ABH SURFACE BOLTS HD1825
 ACTIVE PANEL: ABH SURFACE BOLTS HD1825
 ENGAGEMENT: 13/16" @ THRESHOLD AND 5/8" @ FRAME HEAD.



OPTION 5
 LOCK:
 ACTIVE PANEL: DESIGN HARDWARE MORTISE LOCK AND DEADBOLT AT 39 1/4" FROM BOTTOM

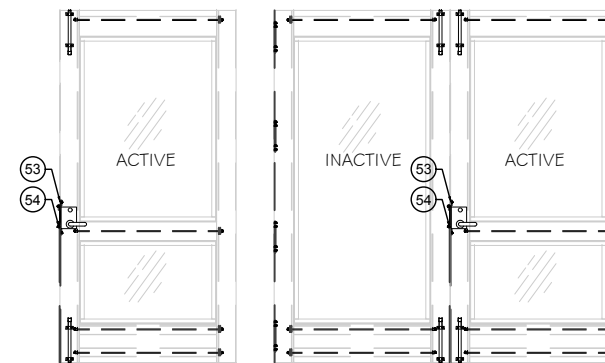
SURFACE BOLT:
 INACTIVE PANEL: ABH HD1825
 ACTIVE PANEL: IVES SB360
 ENGAGEMENT: 13/16" @ THRESHOLD AND 9/16" @ FRAME HEAD.



OPTION 6
 LOCK:
 ACTIVE PANEL: DESIGN HARDWARE CYLINDRICAL LOCK Z SERIES AT 39 3/4" FROM BOTTOM

SURFACE BOLT:
 INACTIVE PANEL: IVES SB360 W/ ABH FLUSH BOLTS
 ACTIVE PANEL: ABH HD1825
 ENGAGEMENT: 13/16" @ THRESHOLD AND 9/16" @ FRAME HEAD.

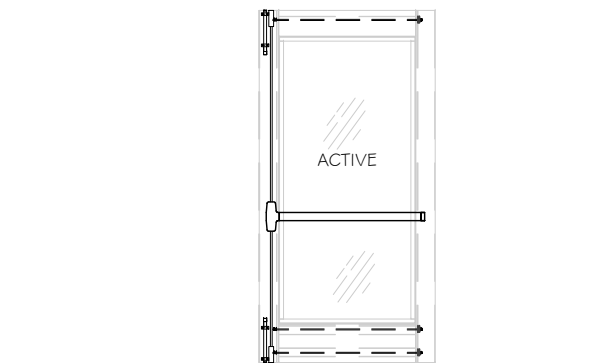
FLUSH BOLTS
 INACTIVE: ABH 1855 @ 12" FROM ENDS
 ENGAGEMENT: 9/16" @ THRESHOLD & HEAD.



OPTION 7
 LOCK:
 ACTIVE PANEL: SECURITECH EXIT PANIC DEVICE AT 39" FROM BOTTOM

SURFACE BOLT:
 ACTIVE PANEL: IVES SB360
 INACTIVE PANEL: IVES SB360
 ENGAGEMENT: 13/16" @ THRESHOLD AND 5/8" AT FRAME HEAD

FLUSH BOLTS
 ACTIVE PANEL: IVES 458
 ENGAGEMENT: 13/16" @ THRESHOLD AND 5/8" @ FRAME HEAD.



OPTION 8
 LOCK:
 ACTIVE PANEL: DORMA 9954 MORTISE LOCK W/ LEVER HANDLE AND DEADBOLT @ 38" FROM BOTTOM

SURFACE BOLTS:
 ACTIVE PANEL: IVES SB360 SURFACE BOLTS
 ENGAGEMENT: 1/2" @ THRESHOLD AND 13/16" @ FRAME HEAD.

PRODUCT CONTROL APPROVAL

AFISU OLABIMTAN, P.E.
 TEXAS REGISTRATION
 TX #63663

10-18-18

NO	DATE	REVISIONS DESCRIPTION

MCY ENGINEERING, INC.
 GLAZING CONSULTANTS

8501 SW 124 AVE. STE. 205A P: 305.271.0117
 MIAMI, FL 33183 F: 786.573.5063
 www.MCYEngineering.com MCY.Engineering@Att.net

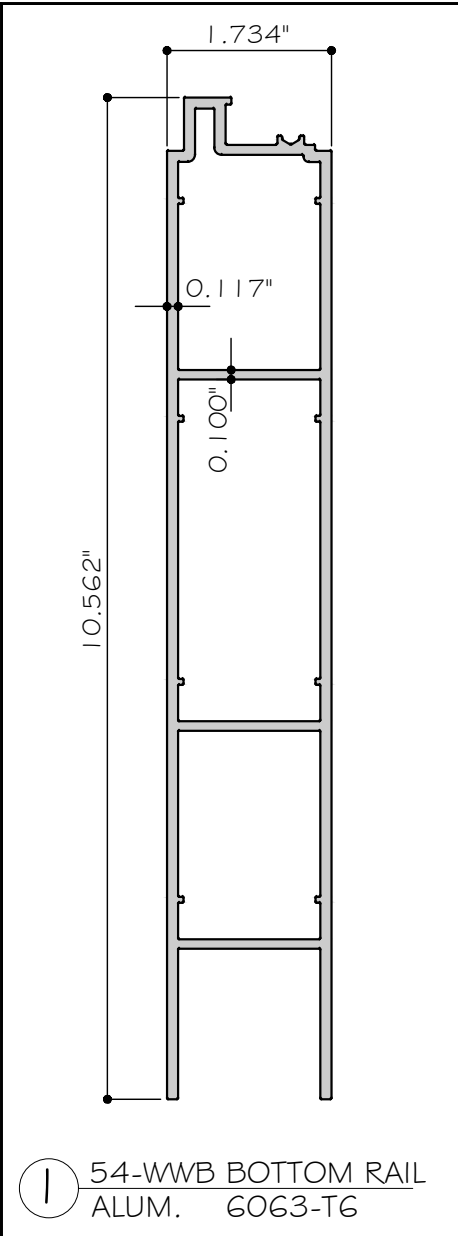
SPECIAL-LITE, INC.
 860 SOUTH WILLIAMS STREET
 P.O. BOX 6
 DECATUR, MI 49045
 WWW.SPECIAL-LITE.COM

SERIES 15 ALUMINUM OUTSWING GLASS DOORS - LMI & SWI

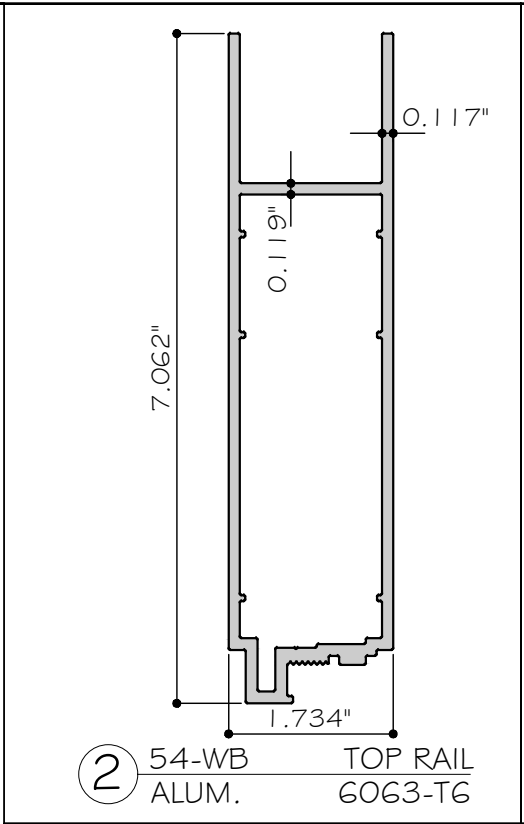
Special-Lite
 Doors with more life.

DATE	10/15/18
SCALE	AS SHOWN
DRAWN	T.G.
PROJECT	17-048

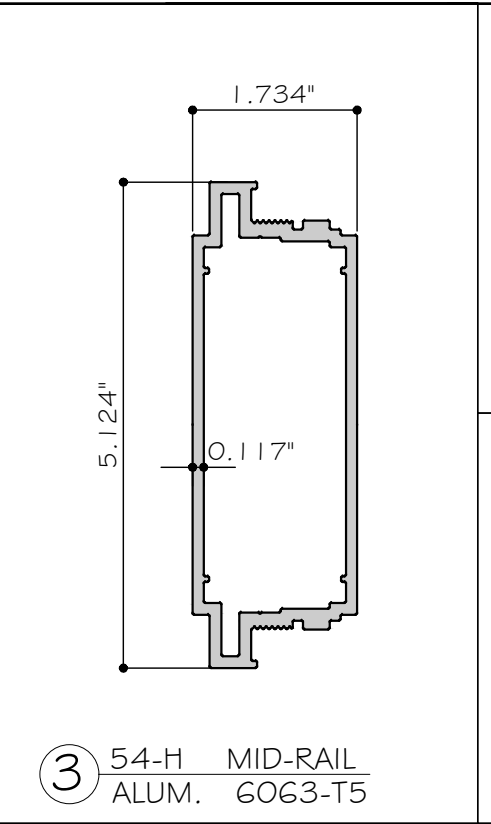
DRAWING NO.
 TA17-02



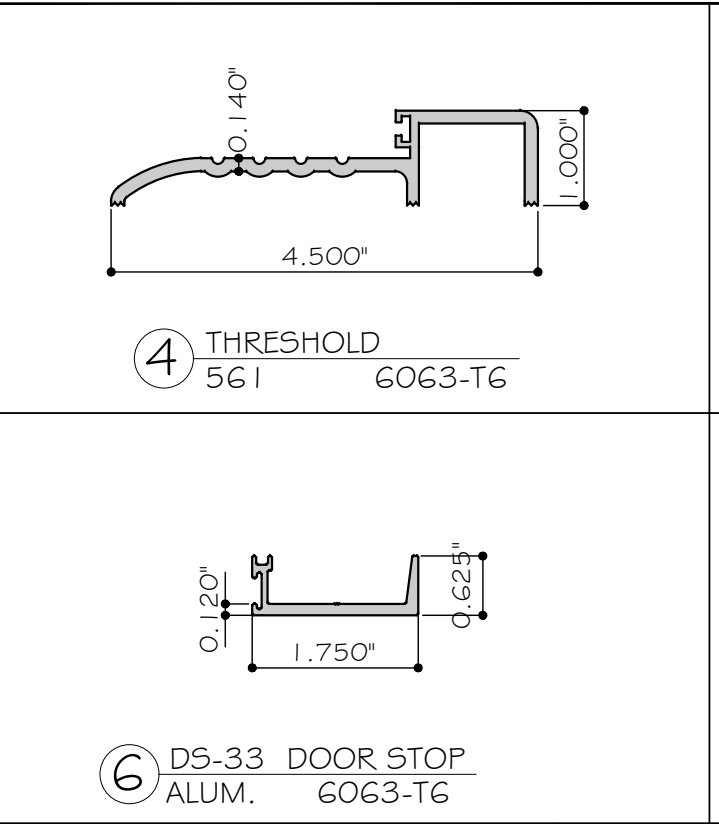
① 54-WWB BOTTOM RAIL ALUM. 6063-T6



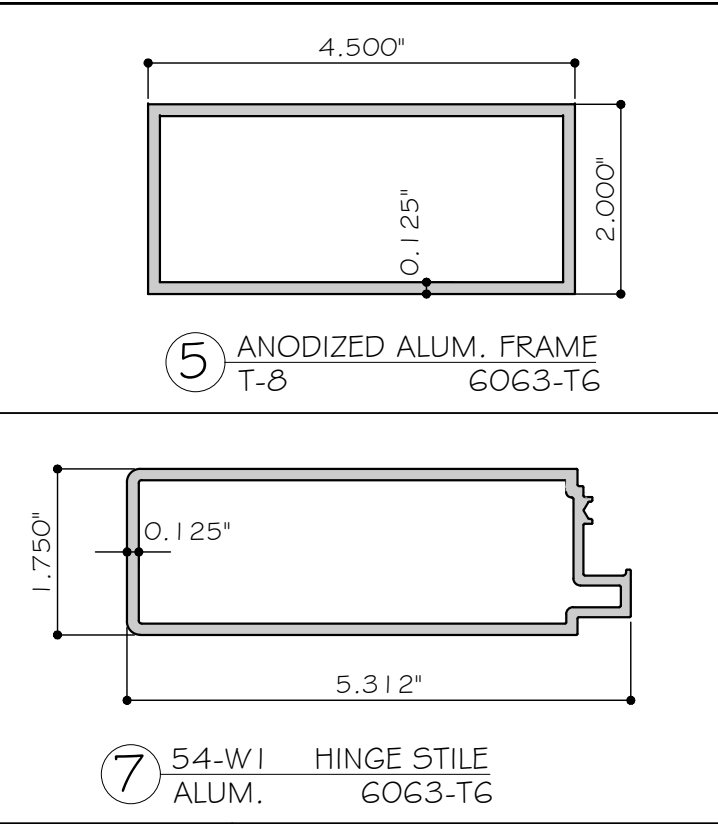
② 54-WB TOP RAIL ALUM. 6063-T6



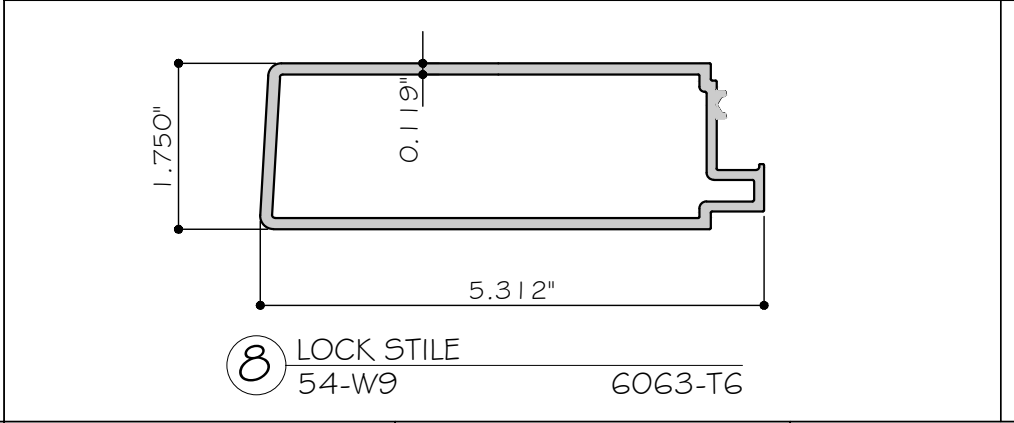
③ 54-H MID-RAIL ALUM. 6063-T5



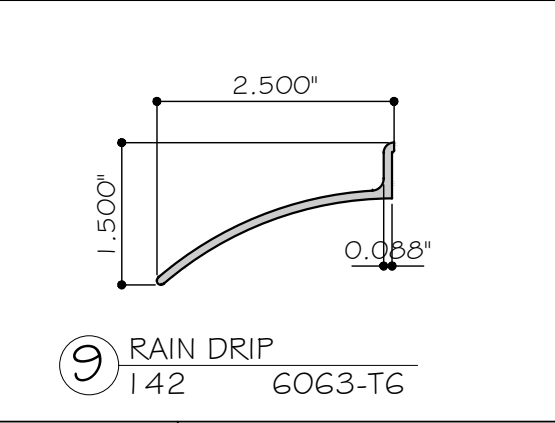
④ THRESHOLD 561 6063-T6



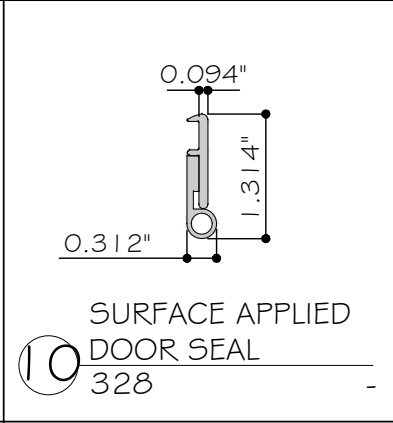
⑤ ANODIZED ALUM. FRAME T-8 6063-T6



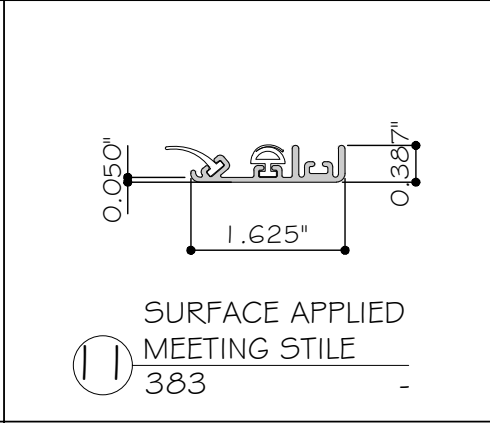
⑧ LOCK STILE 54-W9 6063-T6



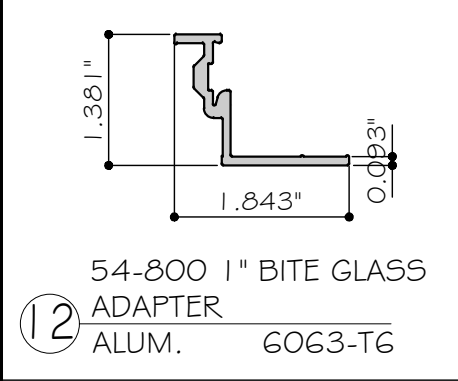
⑨ RAIN DRIP 142 6063-T6



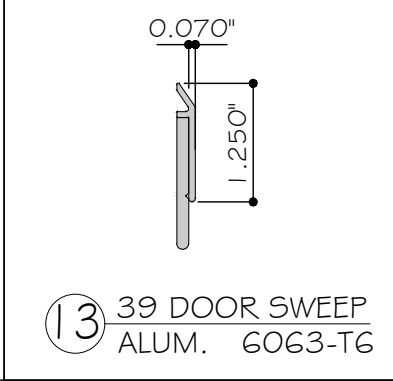
⑩ SURFACE APPLIED DOOR SEAL 328



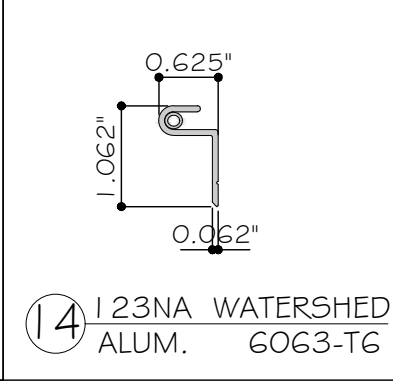
⑪ SURFACE APPLIED MEETING STILE 383



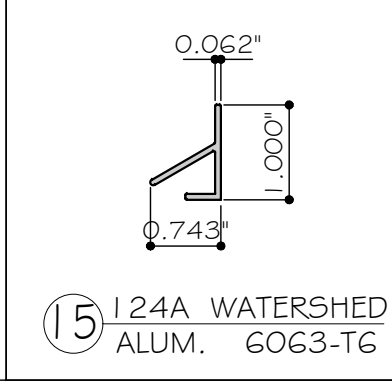
⑫ 54-800 1" BITE GLASS ADAPTER ALUM. 6063-T6



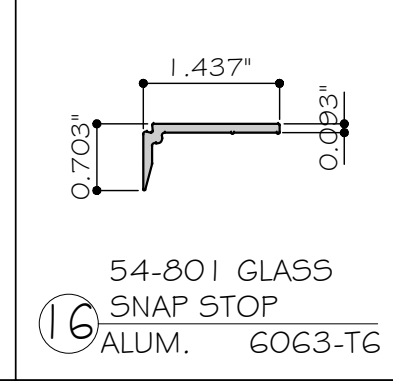
⑬ 39 DOOR SWEEP ALUM. 6063-T6



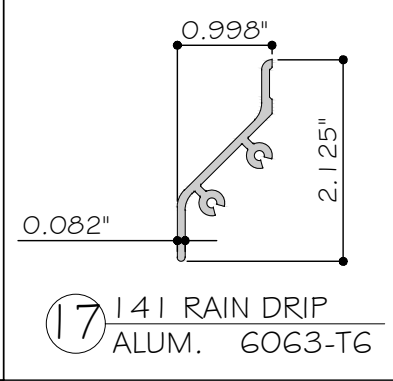
⑭ 123NA WATERSHED ALUM. 6063-T6



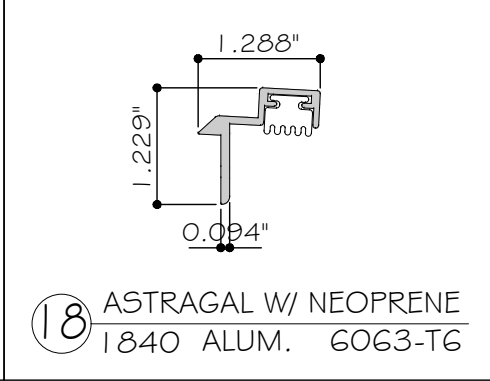
⑮ 124A WATERSHED ALUM. 6063-T6



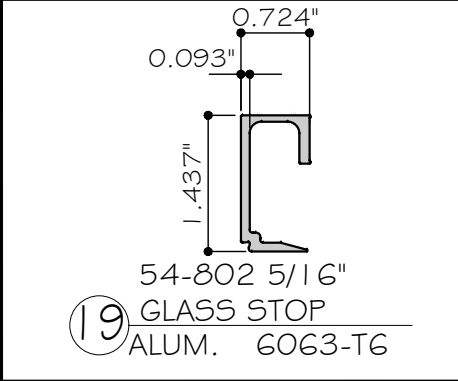
⑯ 54-801 GLASS SNAP STOP ALUM. 6063-T6



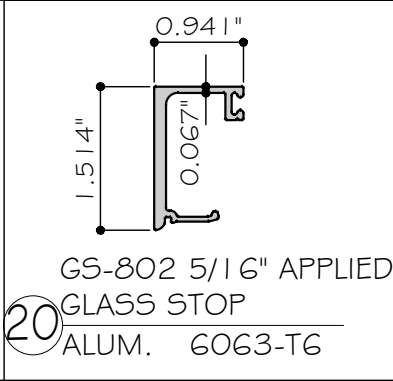
⑰ 141 RAIN DRIP ALUM. 6063-T6



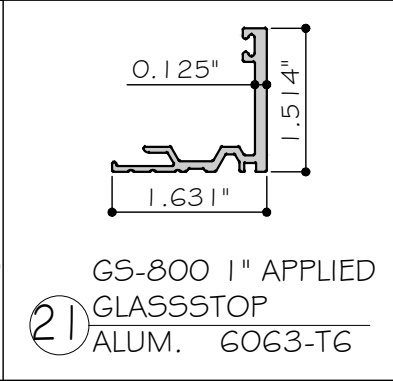
⑱ ASTRAGAL W/ NEOPRENE 1840 ALUM. 6063-T6



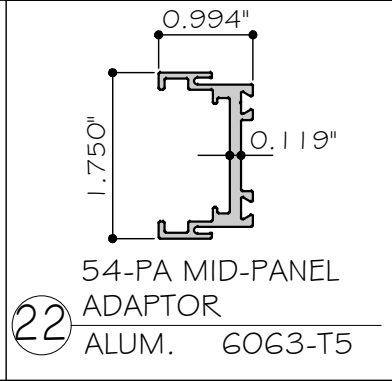
⑲ 54-802 5/16" GLASS STOP ALUM. 6063-T6



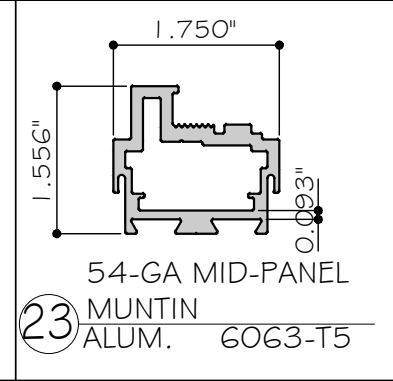
⑳ GS-802 5/16" APPLIED GLASS STOP ALUM. 6063-T6



㉑ GS-800 1" APPLIED GLASSSTOP ALUM. 6063-T6



㉒ 54-PA MID-PANEL ADAPTOR ALUM. 6063-T5



㉓ 54-GA MID-PANEL MUNTIN ALUM. 6063-T5

PRODUCT CONTROL APPROVAL

AFISU OLABIMTAN, P.E.
TEXAS REGISTRATION
TX #63663

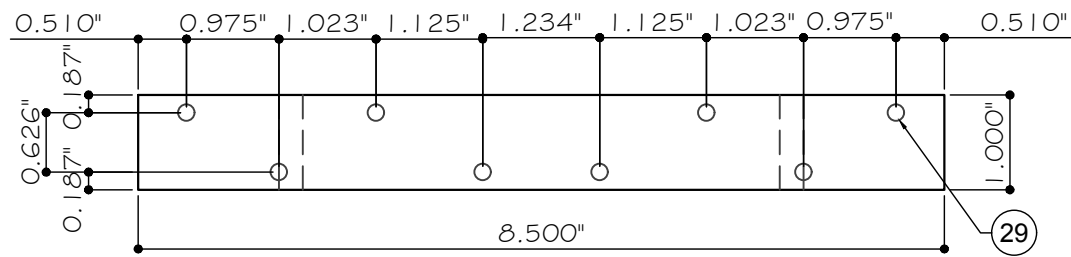
NO	DATE	DESCRIPTION

MCY
MCY ENGINEERING, INC.
GLAZING CONSULTANTS
8501 SW 124 AVE. STE. 205A P: 305.271.0117
MIAMI, FL 33183 F: 786.573.5063
www.MCYEngineering.com MCY.Engineering@Att.net

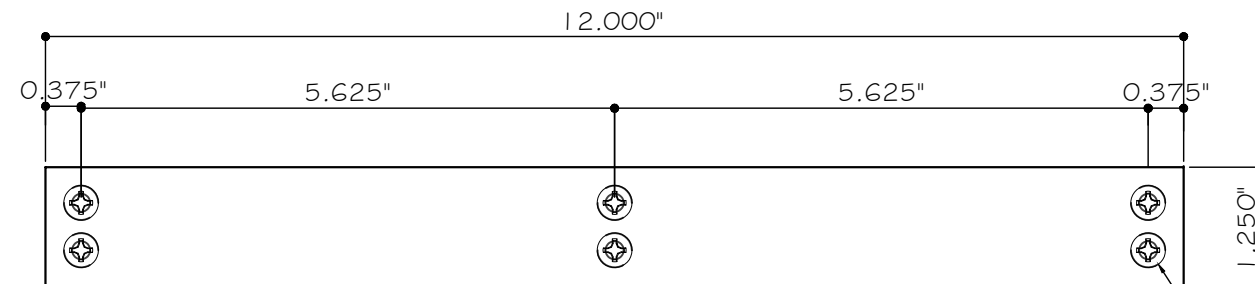
SERIES 15 ALUMINUM OUTSWING GLASS DOORS - LMI & SMI
SPECIAL-LITE, INC.
860 SOUTH WILLIAMS STREET
P.O. BOX 6
DECATUR, MI 49045
WWW.SPECIAL-LITE.COM

Special-Lite
Doors with more life.

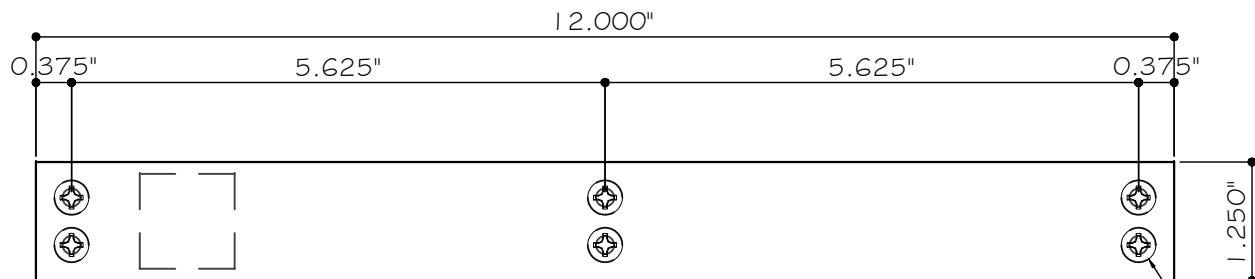
PARTS	
DATE	10/15/18
SCALE	AS SHOWN
DRAWN	T.G.
PROJECT	17-048
DRAWING NO. TA17-02	
11 OF 15	



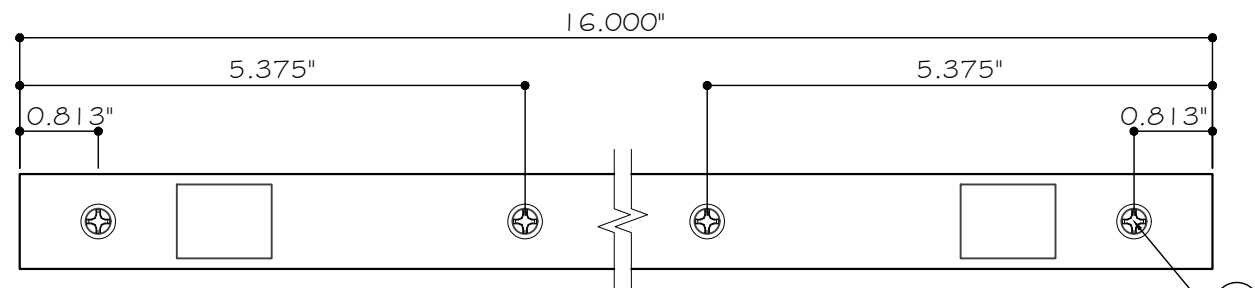
49 ALUM. PLATE HINGE REINF. 1/4" THK.
PT-508 ALUM. 6061-T6



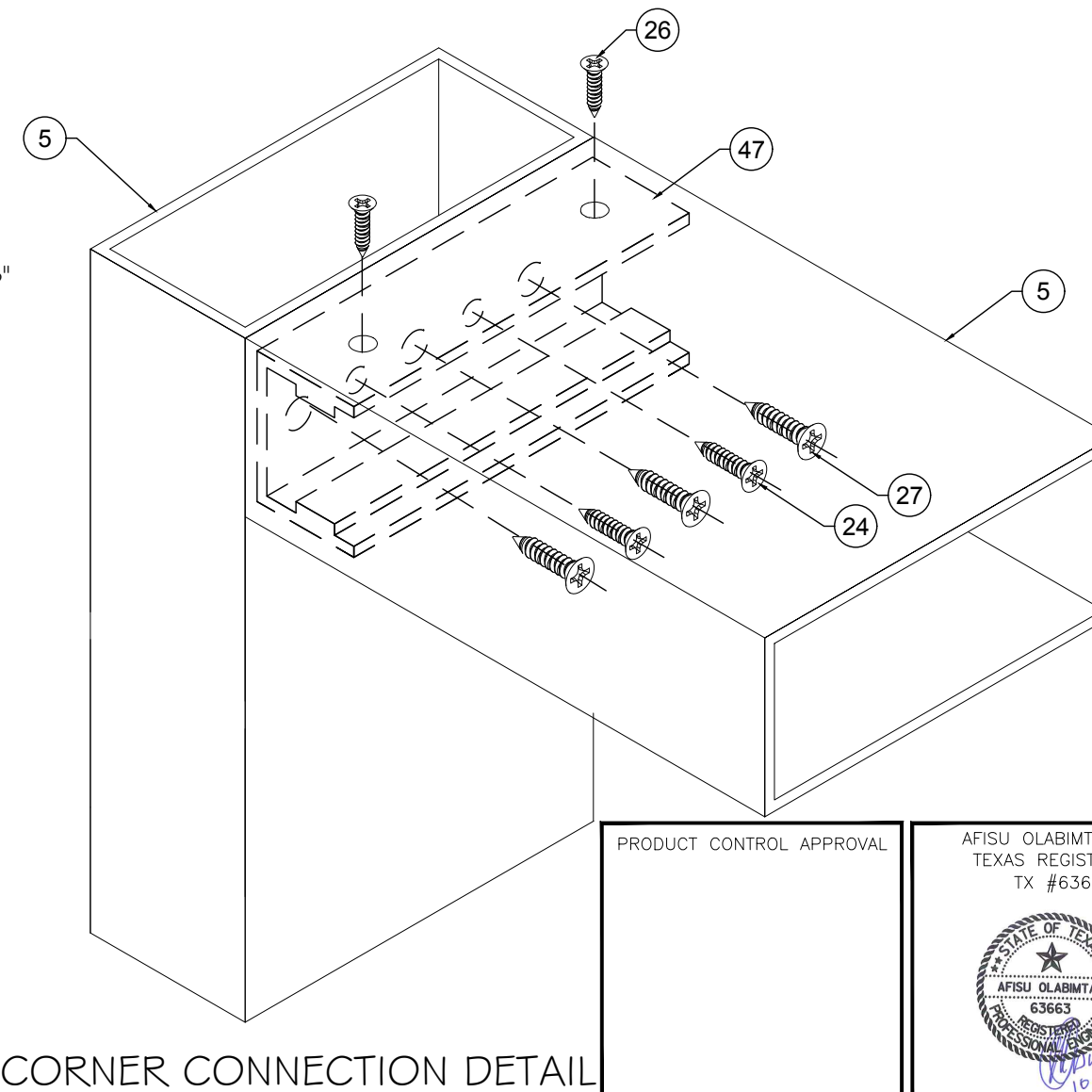
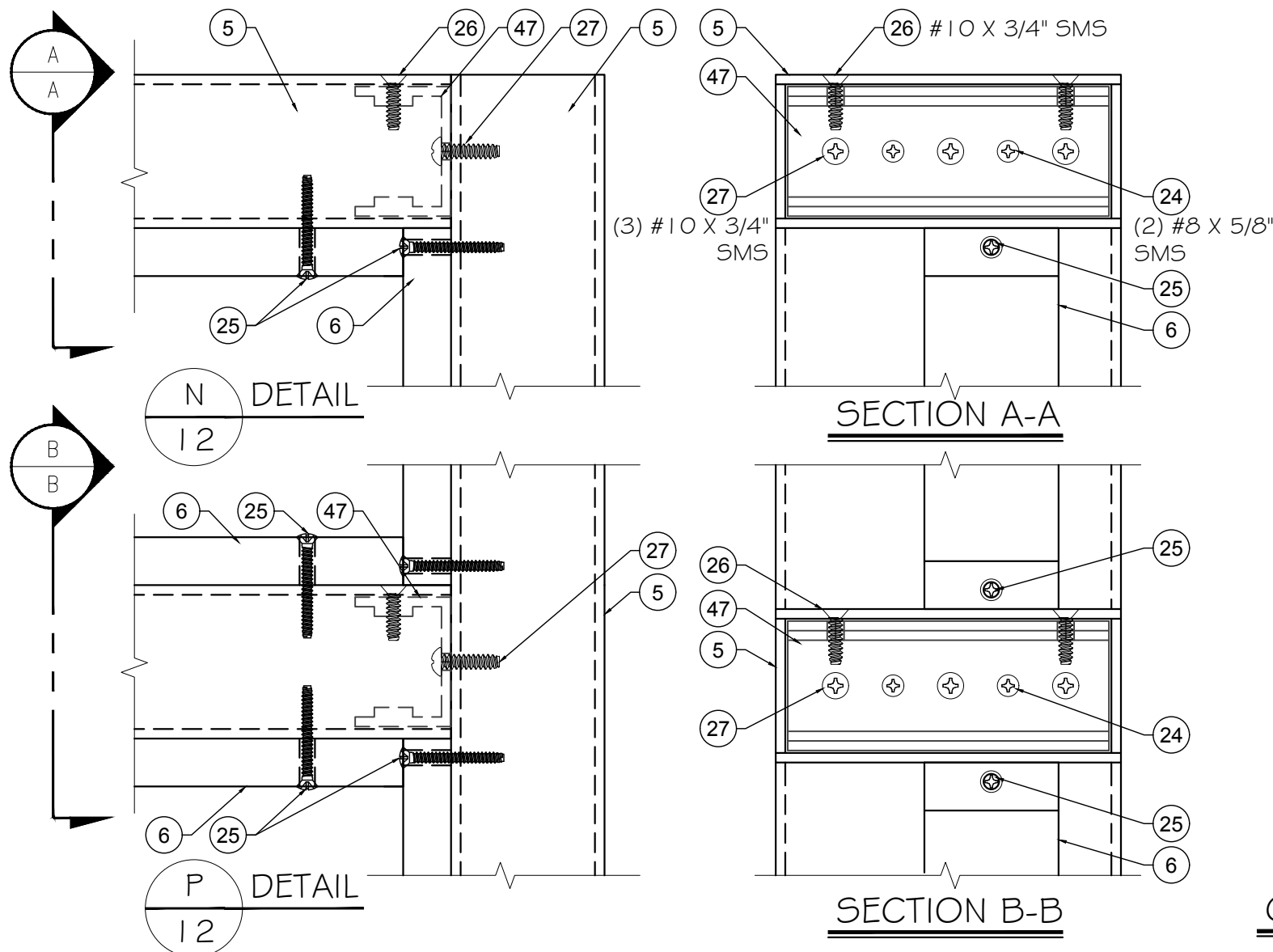
50 1-1/4" X 1/2" X 12" LG. ALUM. BAR REINF.
PT-8001 ALUM. 6061-T6



51 1-1/4" X 1/2" X 12" LG. ALUM BAR REINF.
PT-8002 ALUM. 6061-T6



52 1" X 0.855" X 16" LG. ALUM. BAR REINF..
PT-8003 ALUM. 6061-T6



CORNER CONNECTION DETAIL

PRODUCT CONTROL APPROVAL

AFISU OLABIMTAN, P.E.
TEXAS REGISTRATION
TX #63663

PARTS	
DATE	10/15/18
SCALE	AS SHOWN
DRAWN	T.G.
PROJECT	17-048
DRAWING NO. TA17-02	
12 OF 15	

REVISIONS

NO	DATE	DESCRIPTION

MCY

MCY ENGINEERING, INC.
GLAZING CONSULTANTS

8501 SW 124 AVE. STE. 205A P. 305.271.0117
MIAMI, FL 33183 F. 786.573.5063

www.MCYEngineering.com MCY.Engineering@Att.net

SERIES 15 ALUMINUM OUTSWING GLASS DOORS - LMI & SWI

SPECIAL-LITE, INC.
860 SOUTH WILLIAMS STREET
P.O. BOX 6
DECATUR, MI 49045
WWW.SPECIAL-LITE.COM

Special-Lite
Doors with more life.

BILL OF MATERIALS

ITEM	PART	DESCRIPTION	MATERIAL	MANUFACTURER / REMARKS
1	54-WWB	BOTTOM RAIL	ALUM. 6063-T6	SPECIAL-LITE, INC.
2	54-WB	TOP RAIL	ALUM. 6063-T6	SPECIAL-LITE, INC.
3	54-H	MID-RAIL	ALUM. 6063-T5	SPECIAL-LITE, INC.
4	56 I	THRESHOLD	ALUM. 6063-T6	ZERO INTERNATIONAL
5	T-8	2" X 4.5" 6063-T6 CLASS I ANODIZED ALUM. FRAME	ALUM. 6063-T6	SPECIAL-LITE, INC.
6	D5-33	DOOR STOP	ALUM. 6063-T6	SPECIAL-LITE, INC.
7	54-W1	HINGE STILE	ALUM. 6063-T6	SPECIAL-LITE, INC.
8	54-W9	LOCK STILE	ALUM. 6063-T6	SPECIAL-LITE, INC.
9	142	RAIN DRIP	ALUM. 6063-T6	ZERO INTERNATIONAL ATTACHED W/ #8 X 5/8" SMS
10	328	SURFACE APPLIED DOOR SEAL	ALUM. 6063-T6 & NEOPRENE	ZERO INTERNATIONAL, ATTACHED W/ #6 X 1/2" SMS
11	383	SURFACE MOUNTED MEETING STILE	ALUM. 6063-T6 & NEOPRENE	ZERO INTERNATIONAL
12	54-800	1" BITE GLASS ADAPTER	ALUM. 6063-T6	SPECIAL-LITE, INC.
13	39	SURFACE APPLIED DOOR SWEEP	ALUM. 6063-T6 & NEOPRENE	ZERO INTERNATIONAL, ATTACHED W/ #6 X 1/2" SMS
14	123NA	INTERLOCKING WATER SHED	ALUM. 6063-T6	NATIONAL GUARD, ATTACHED W/ #6 X 3/4" SMS
15	124A	INTERLOCKING WATER SHED	ALUM. 6063-T6	NATIONAL GUARD, ATTACHED W/ #6 X 3/4" SMS
16	54-801	1" GLASS SNAP STOP	ALUM. 6063-T6	SPECIAL-LITE, INC.
17	141	RAIN DRIP	ALUM. 6063-T6	ZERO INTERNATIONAL, ATTACHED W/ #8 X 5/8" SMS
18	1840	INTERIOR ASTRAGAL WITH NEOPRENE	ALUM. 6063-T6 & NEOPRENE	ZERO INTERNATIONAL
19	54-802	5/16" GLASS SNAP STOP	ALUM. 6063-T6	SPECIAL-LITE, INC.
20	G5-802	5/16" APPLIED GLASS STOP	ALUM. 6063-T6	SPECIAL-LITE, INC.
21	G5-800	1" APPLIED GLASS STOP	ALUM. 6063-T6	SPECIAL-LITE, INC.
22	54-PA	MID-PANEL ADAPTOR	ALUM. 6063-T5	SPECIAL-LITE, INC.
23	54-GA	MID-PANEL GLASS ADAPTOR	ALUM. 6063-T5	SPECIAL-LITE, INC.
24	SC-12	8-15 x 5/8" PHILLIPS PAN HEAD ZINC @ 8-3/4" O.C.	STEEL	-
25	SC-15	#8 x 1-3/8" PHILLIPS OH SMS	STEEL	-
26	SC-23	10-16 x 3/4" PHILLIPS U/C FLAT HEAD CLR	STEEL	-
27	SC-25	10-16 x 3/4" PHILLIPS TRUSS HEAD CLR	STEEL	-
28	SC-26	12-24 x 1/2" PHILLIPS U/C FLAT HEAD CLR	STEEL	-
29	SC-28	12-24 x 1" PHILLIPS FLAT HEAD CLR	STEEL	-
30	SC-83	8-18 x 3/4" PHILLIPS #6 TRIM FLAT HEAD CLR @ 8-3/4" O.C.	STEEL	-
31	DC995	DOW CORNING 995 SILICONE SEALANT	SILICONE	DOW CORNING
32	-	3/16" x 3/8" FOAM GLAZING TAPE	FOAM	NORSEAL
33	-	1/4" SETTING BLOCK	EPDM RUBBER	GLAZING RUBBER PRODUCTS
34	-	1/8" SETTING BLOCK	EPDM RUBBER	ZATKOFF SEALS AND PACKING
35	-	SPACER	ALUM.	ALL METAL
36	8634-5771-1	SCHLEGEL SYSTEMS WEATHER STRIP	POLYPROPYLENE & WOVEN PILE	SCHLEGEL SYSTEMS
37	-	URETHANE FOAM (POURED IN PLACE)	URETHANE FOAM	SPECIAL-LITE, INC.
38	-	0.120" FRP SKIN	FRP	CRANE COMPOSITES
39	-	3/8"-16 STEEL TIE ROD W/ WASHER AND NUT	STEEL	-

REVISIONS	DESCRIPTION
NO	DATE

MCY ENGINEERING, INC.
GLAZING CONSULTANTS

8501 SW 124 AVE. STE. 205A P: 305.271.0117
MIAMI, FL 33183 F: 786.573.5063

www.MCYEngineering.com MCY.Engineering@Att.net

SPECIAL-LITE, INC.
860 SOUTH WILLIAMS STREET
P.O. BOX 6
DECATUR, MI 49045
WWW.SPECIAL-LITE.COM

Special-Lite
Doors with more life.

BOM	
DATE	07/05/17
SCALE	AS SHOWN
DRAWN	T.G.
PROJECT	17-048

DRAWING NO.
TA17-02

13 OF 15

PRODUCT CONTROL APPROVAL

AFISU OLABIMTAN, P.E.
TEXAS REGISTRATION
TX #63663

10-18-18

BILL OF MATERIALS (CONT.)

ITEM	PART	DESCRIPTION	MATERIAL	MANUFACTURER / REMARKS
40	9954	DORMA MORTISE LOCK AND DEADBOLT	STEEL	DORMA
41	9400	DORMA 9400 SVR	STEEL	DORMA
42	SB360	IVES SURFACE BOLTS, 6" FROM ENDS	STEEL	IVES, ATTACHED WITH (1) X" X 1/2" X 7/8" HIGH ALUM. PLATE AND (2) 1/4-20 X 3" FH MS
43	BB5	DESIGN HARDWARE BALL BEARING HINGE	STEEL	DESIGN HARDWARE, ATTACHED TO PANEL AND FRAME W/ (4) 12-24 X 1/2" FH MS
44	AI10HD	SELECT PRODUCTS CONTINUOUS HINGE	ALUM. 6063-T6	SELECT PRODUCTS, ATTACHED W/
45	-	FLUSH MOUNT METALLIC STRIKE PLATE, 40-3/4" FROM BOTTOM	STEEL	ATTACHED W/ (2) 12-24 X 1/2" FH MS
46	HD1825	ABH SURFACE BOLTS	STAINLESS STEEL	ABH
47	PT-131	FRAME CORNER CLIP	ALUM. 6061-T6	SPECIAL-LITE, INC.
48	PT-404	CORNER WASHER	ALUM. 6061-T6	SPECIAL-LITE, INC.
49	508	1" X 1/4" X 8-1/2" LG. ALUM. PLATE HINGE REINF.	ALUM. 6061-T6	ATTACHED W/ (4) 10 X 3/4" FH SMS
50	PT-8001	1-1/4" X 1/2" X 12" LG. ALUM. BAR REINF.	ALUM. 6061-T6	INSIDE FRAME HEAD DOOR STOP @ 12" & 91" FROM LEFT
51	PT-8002	1-1/4" X 1/2" X 12" LG. ALUM. BAR REINF.	ALUM. 6061-T6	INSIDE FRAME HEAD DOOR STOP @ 41" & 61 1/2" FROM LEFT
52	PT-8003	1" X 0.855" X 16" LG. ALUM. BAR REINF.	ALUM. 6061-T6	INSIDE THRESHOLD LOCATED @ 41" FROM LEFT
53	514	EXTRUDED ALUM. REINF.	ALUM. 6061-T6	INSIDE ACTIVE PANEL ABOVE & BELOW THE LOCK
54	519	EXTRUDED ALUM. REINF.	ALUM. 6061-T6	INSIDE THE ACTIVE PANEL ABOVE & BELOW THE STRIKE PLATE
55	W164	GLAZING GASKET	EPDM RUBBER	TOTAL PLASTICS
56	ZSP2110-002	RUBBER GASKET	EPDM RUBBER	TOTAL PLASTICS
57	-	NEOPRENE GASKET	NEOPRENE	ZERO INTERNATIONAL

REVISIONS	
NO	DATE

MCY


MCY ENGINEERING, INC.
GLAZING CONSULTANTS

8501 SW 124 AVE. STE. 205A P: 305.271.0117
MIAMI, FL 33183 F: 786.573.5063

www.MCYEngineering.com MCY.Engineering@Att.net


SERIES 15 ALUMINUM OUTSWING GLASS DOORS - LMI & SWI

SPECIAL-LITE, INC.
860 SOUTH WILLIAMS STREET
P.O. BOX 6
DECATUR, MI 49045
WWW.SPECIAL-LITE.COM

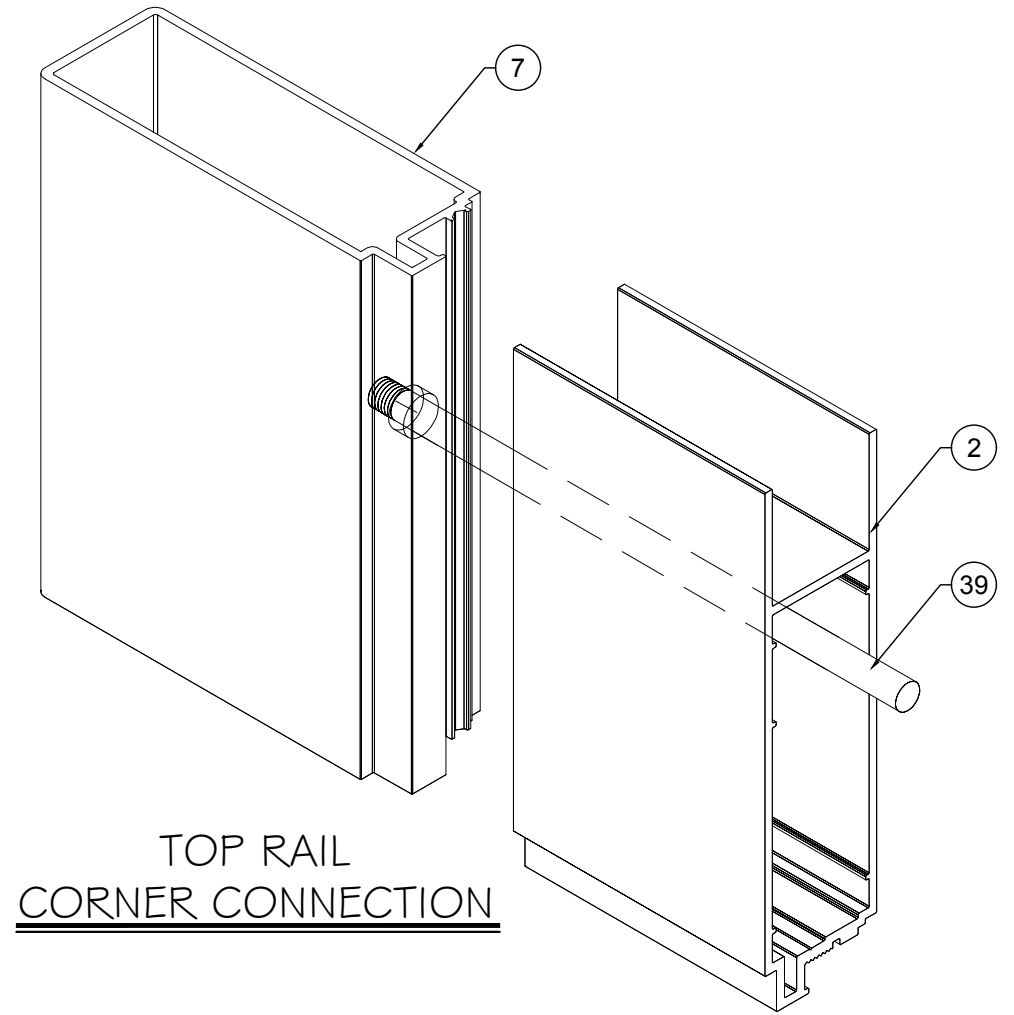


PRODUCT CONTROL APPROVAL

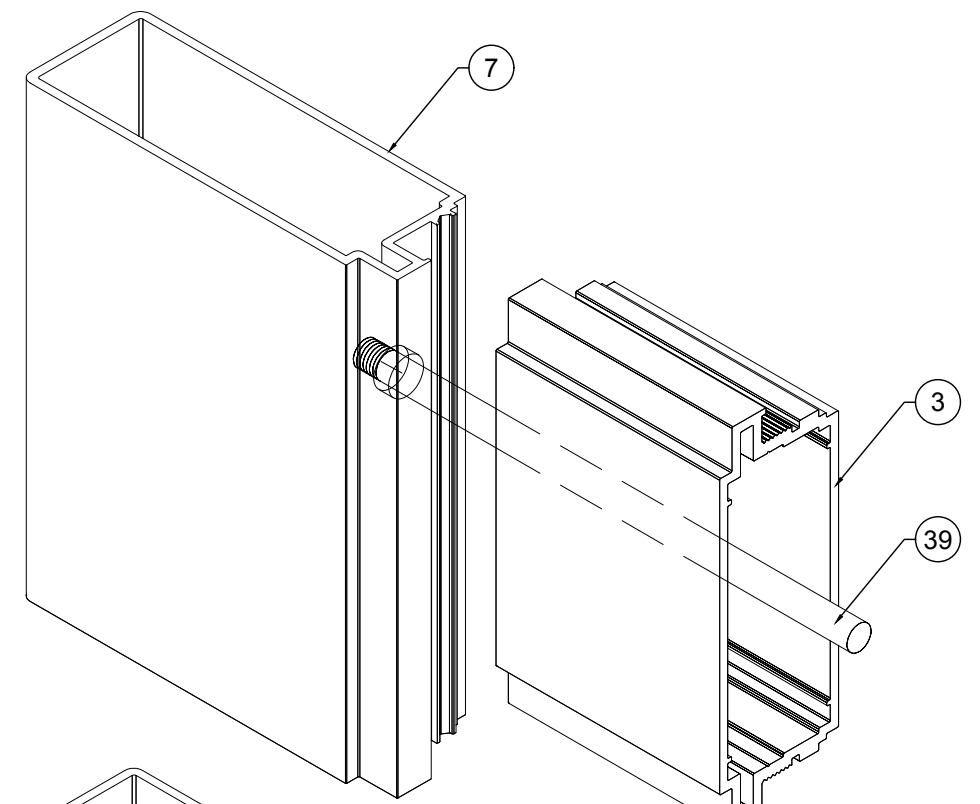
AFISU OLABIMTAN, P.E.
TEXAS REGISTRATION
TX #63663



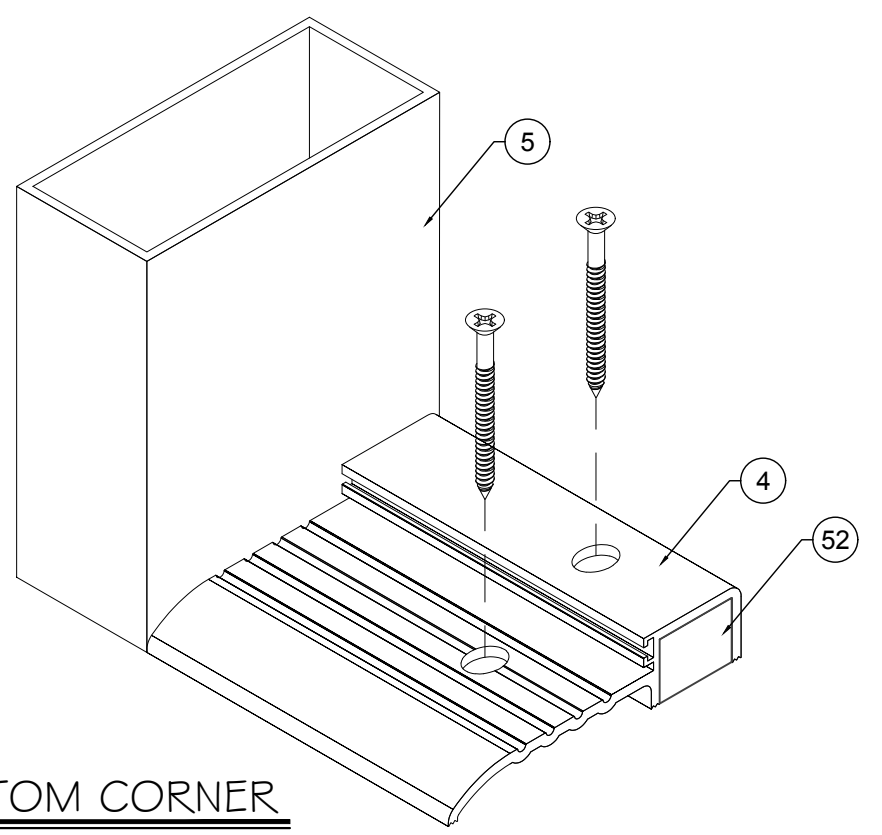
BOM	
DATE	10/15/18
SCALE	AS SHOWN
DRAWN	T.G.
PROJECT	17-048
DRAWING NO. TA17-02	
14 OF 15	



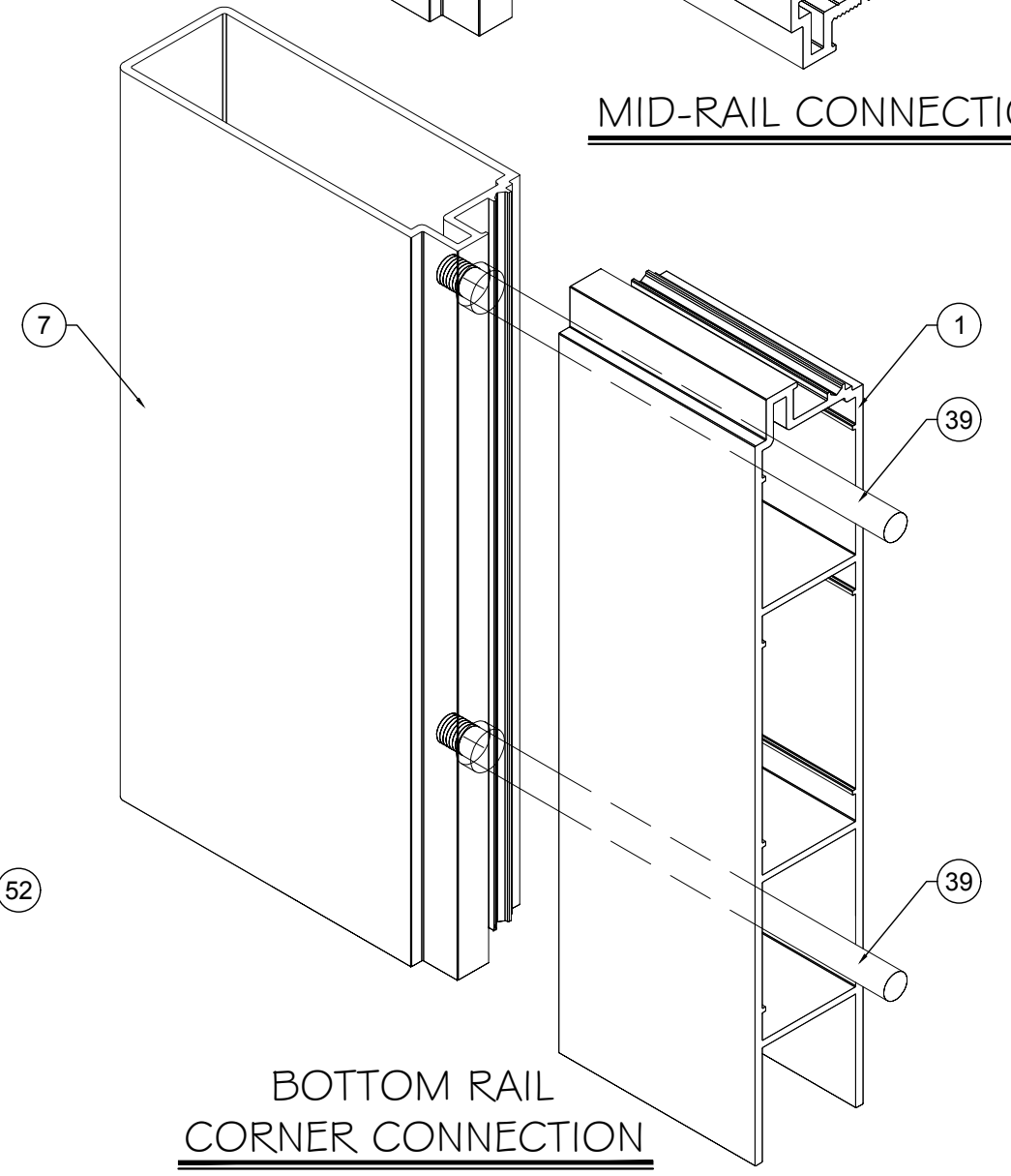
TOP RAIL
CORNER CONNECTION



MID-RAIL CONNECTION



FRAME BOTTOM CORNER



BOTTOM RAIL
CORNER CONNECTION

PRODUCT CONTROL APPROVAL

AFISU OLABIMTAN, P.E.
TEXAS REGISTRATION
TX #63663

10-18-18

PARTS	
DATE	10/15/18
SCALE	AS SHOWN
DRAWN	T.G.
PROJECT	17-048
DRAWING NO. TA17-02	
15 OF 15	

NO	DATE	REVISIONS	DESCRIPTION

MCY
ENGINEERING, INC.
GLAZING CONSULTANTS

8501 SW 124 AVE. STE. 205A P: 305.271.0117
MIAMI, FL 33183 F: 786.573.5063
www.MCYEngineering.com MCY.Engineering@Att.net

SERIES 15 ALUMINUM OUTSWING GLASS DOORS - LMI & SWI

SPECIAL-LITE, INC.
860 SOUTH WILLIAMS STREET
P.O. BOX 6
DECATUR, MI 49045
WWW.SPECIAL-LITE.COM

Special-Lite
Doors with more life.