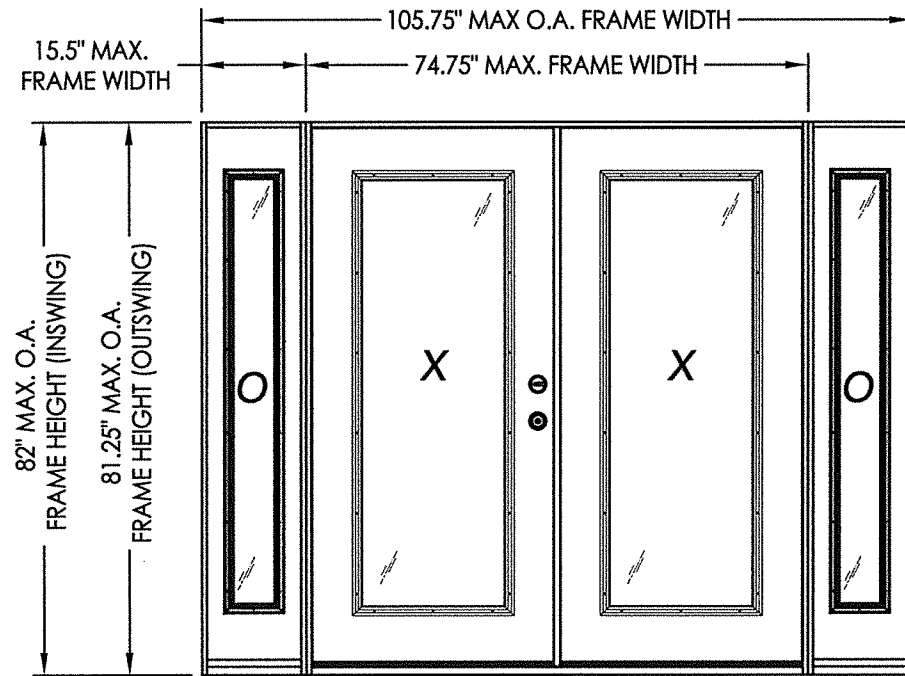
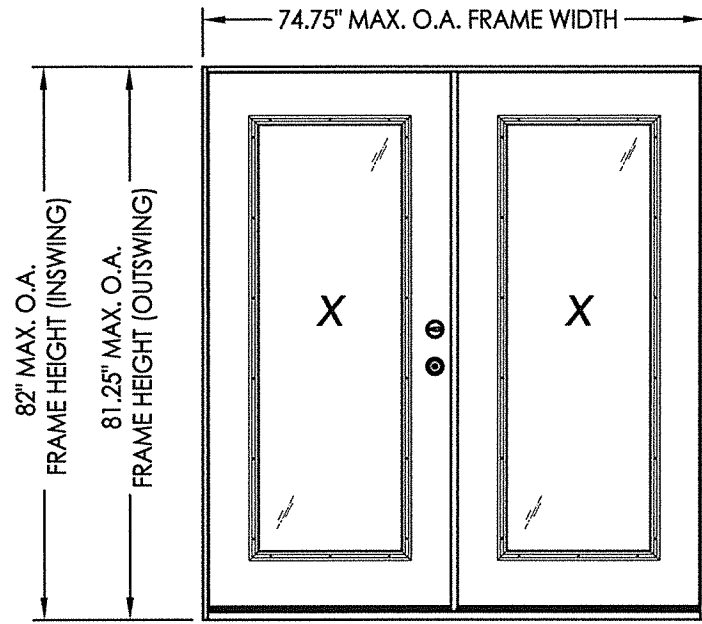


Z:\Clients\Therma Tru PERMANENT\B - Texas Dept of Ins\TDI - DR 946 - 6'8 & 8'0 Glazed Comp Edge Non-Impact (TX 4761 - 4770)\C - Drawings\TX-4761-63.dwg

THERMA TRU® DOORS

Fiber-Classic® & Smooth-Star®

COMPOSITE EDGE GLAZED FIBERGLASS DOUBLE DOOR w/ or w/out SIDELITES INSWING/OUTSWING "NON-IMPACT"



EVALUATED FOR USE IN THE STATE OF TEXAS

TDI DR-946

The Fiberglass Door system described herein complies with the 2018 International Residential Code (IRC), Sections R301 & R609 and the 2018 International Building Code (IBC), Sections 1404.13, 1609, 1709.5, 2403 and 2404 subject to the following conditions:

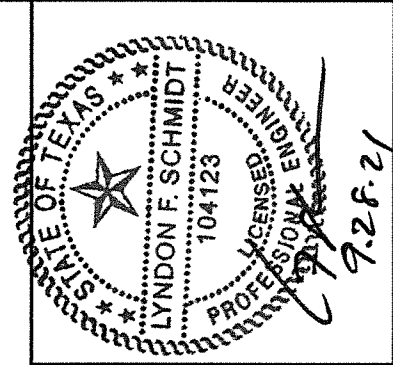
1. Anchors shall be as listed and spaced as shown in the details. Anchor embedment to base material shall be beyond wall dressing or stucco.
2. When used in areas requiring wind-borne debris protection this product is required to be protected with an impact resistant covering that complies with Section R301.2.1.2 of the IRC and Section 1609.1.2 of the IBC.
3. Allowable design pressure requirements must be equal to or less than the design pressure rating shown in the design pressure chart, sheet 1 of this drawing.
4. Conditions not covered by this drawing are subject to further engineering analysis.
5. Fiber-Classic and Smooth-Star Door and Sidelite panels require the use of "J" part numbers. These door and sidelite panels must be stained or painted within six months of installation.

TABLE OF CONTENTS

SHEET #	DESCRIPTION
1	Typical Elevations, Design Pressures & General Notes
2	Door Panel Details
3	Door Panel Details
4	Sidelite Panel Details
5	Elevations
6	Horizontal & Vertical Cross Sections
7	Vertical Cross Sections (Thresholds)
8	Frame Anchoring
9	Hardware Details
10	Glazing Details
11	Components
12	Bill of Materials

CONFIGURATION	ASTRAGAL	DESIGN PRESSURE (PSF) INSWING		DESIGN PRESSURE (PSF) OUTSWING	
		POSITIVE	NEGATIVE	POSITIVE	NEGATIVE
XX, OXXO	STANDARD	+40.0	-40.0	+40.0	-40.0
XX, OXXO	COASTAL	+50.0	-50.0	+50.0	-50.0

See Sheet 5 for Hardware Specifications



Documents Prepared By: Lyndon F. Schmidt, P.E.
TEXAS P.E. #104123

RW BUILDING CONSULTANTS, INC.
P.O. Box 230 Valrico FL, 33595
Phone No.: 813.659.9197

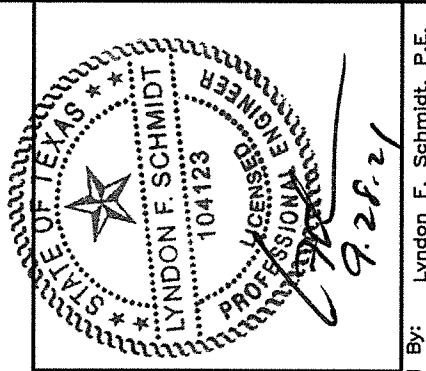
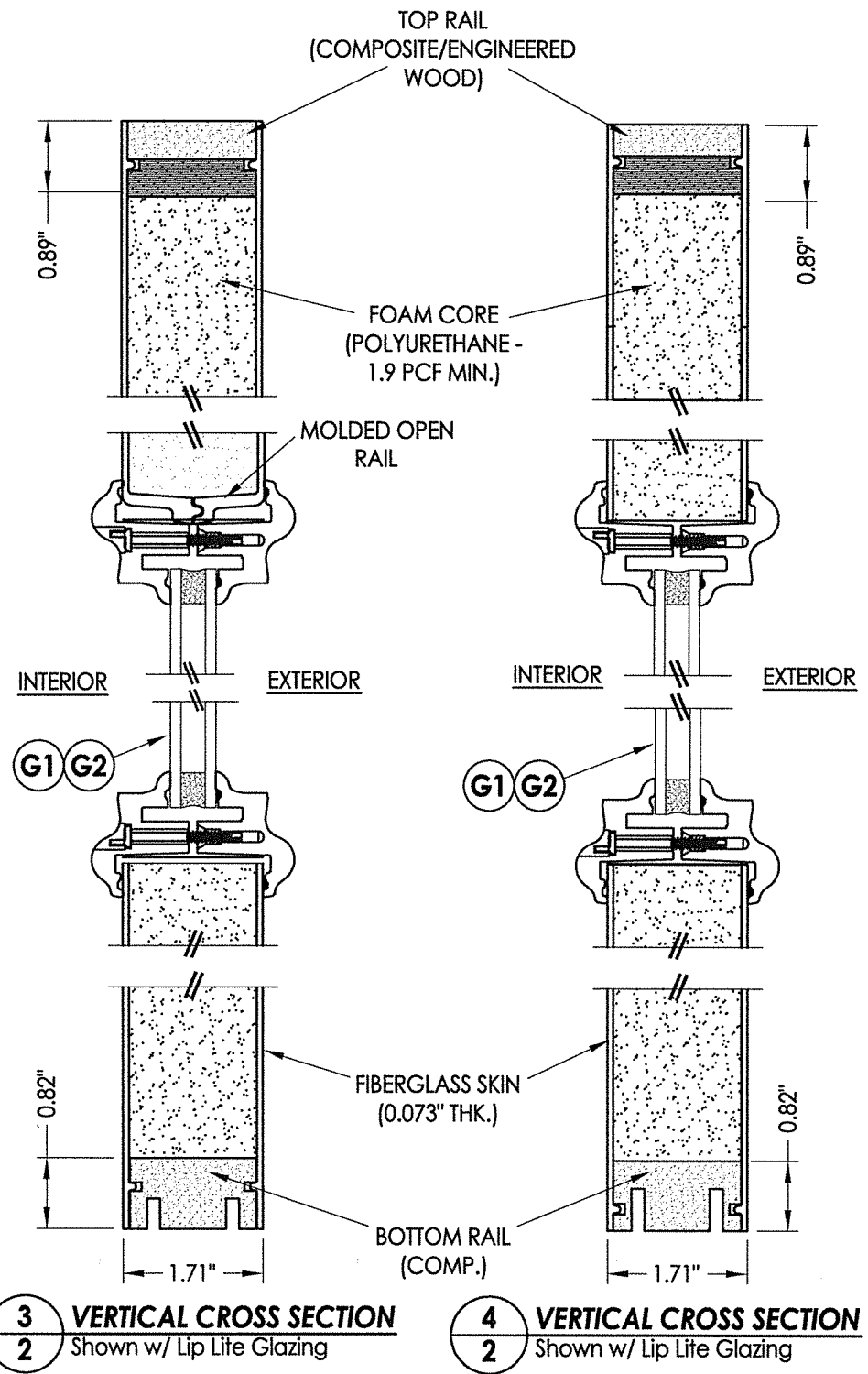
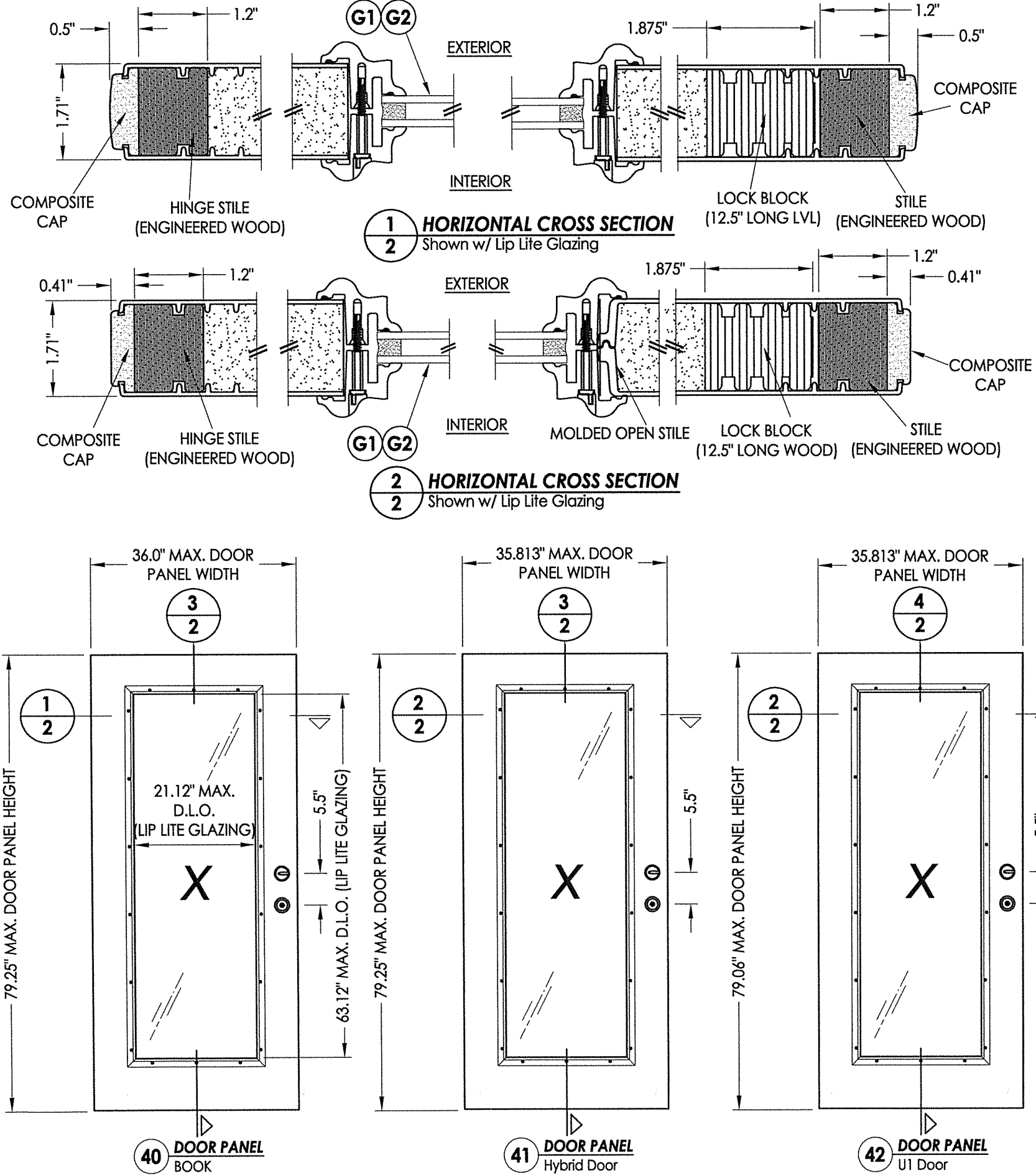
CERTIFICATE OF REGISTRATION # F-11852

PRODUCT: THERMA-TRU
FIBERGLASS DOOR
PART OR ASSEMBLY:
TYPICAL ELEVATION, DESIGN
PRESSURES & GENERAL NOTES

NO.	DATE	REVISIONS
1	9/27/21	UPDATE TO 2018 IBC/IRC CODE

DATE: 11/27/17
SCALE: N.T.S.
DWG. BY: JK
CHK. BY: LFS
DRAWING NO.: TX-4763
SHEET 1 OF 12

Z:\Clients\Therma Tru PERMANENT\B - Texas Dept of Ins\TDI - DR 946 - 6'8 & 8'0 Glazed Comp Edge Non-Impact (TX 4761 - 4770)\C - Drawings\TX-4761-63.dwg



Documents Prepared By: Lyndon F. Schmidt, P.E.
 TEXAS P.E. #104123

RW BUILDING CONSULTANTS, INC.
 P.O. Box 230 Valrico FL 33595
 Phone No.: 813.659.9197

CERTIFICATE OF REGISTRATION # F-11852

PRODUCT: THERMA-TRU FIBERGLASS DOOR

PART OR ASSEMBLY: DOOR PANEL DETAILS

NO.	DATE	DESCRIPTION
1	9/27/21	UPDATE TO 2018 IBC/IRC CODE
		LFS
		BY

REVISIONS

DATE: 11/27/17

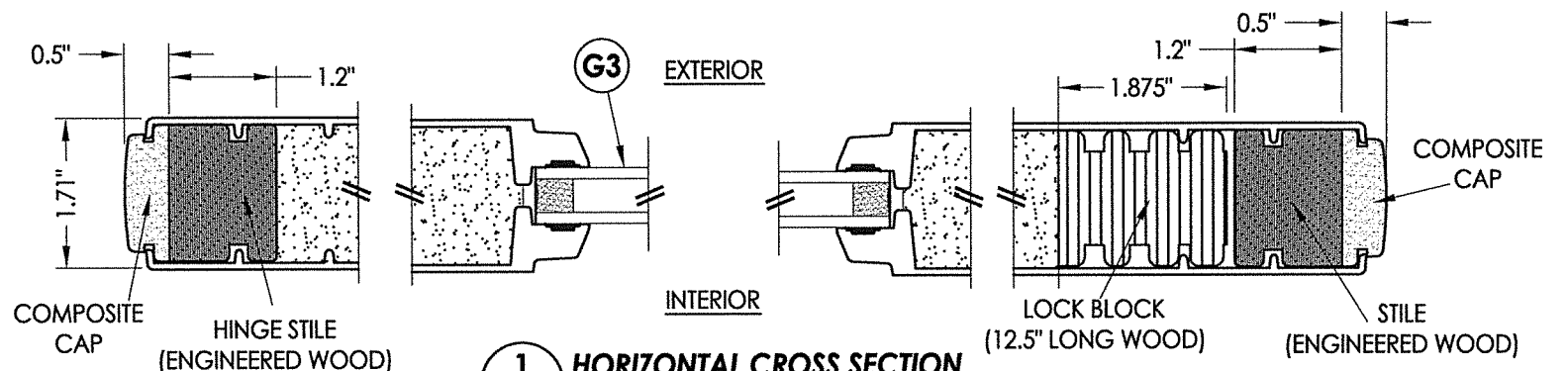
SCALE: N.T.S.

DWG. BY: JK

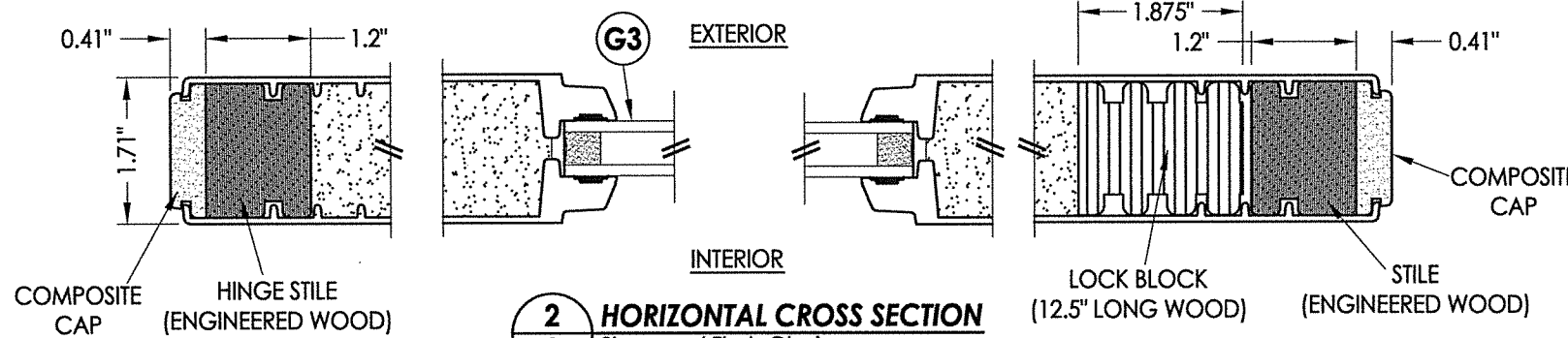
CHK. BY: LFS

DRAWING NO.: TX-4763

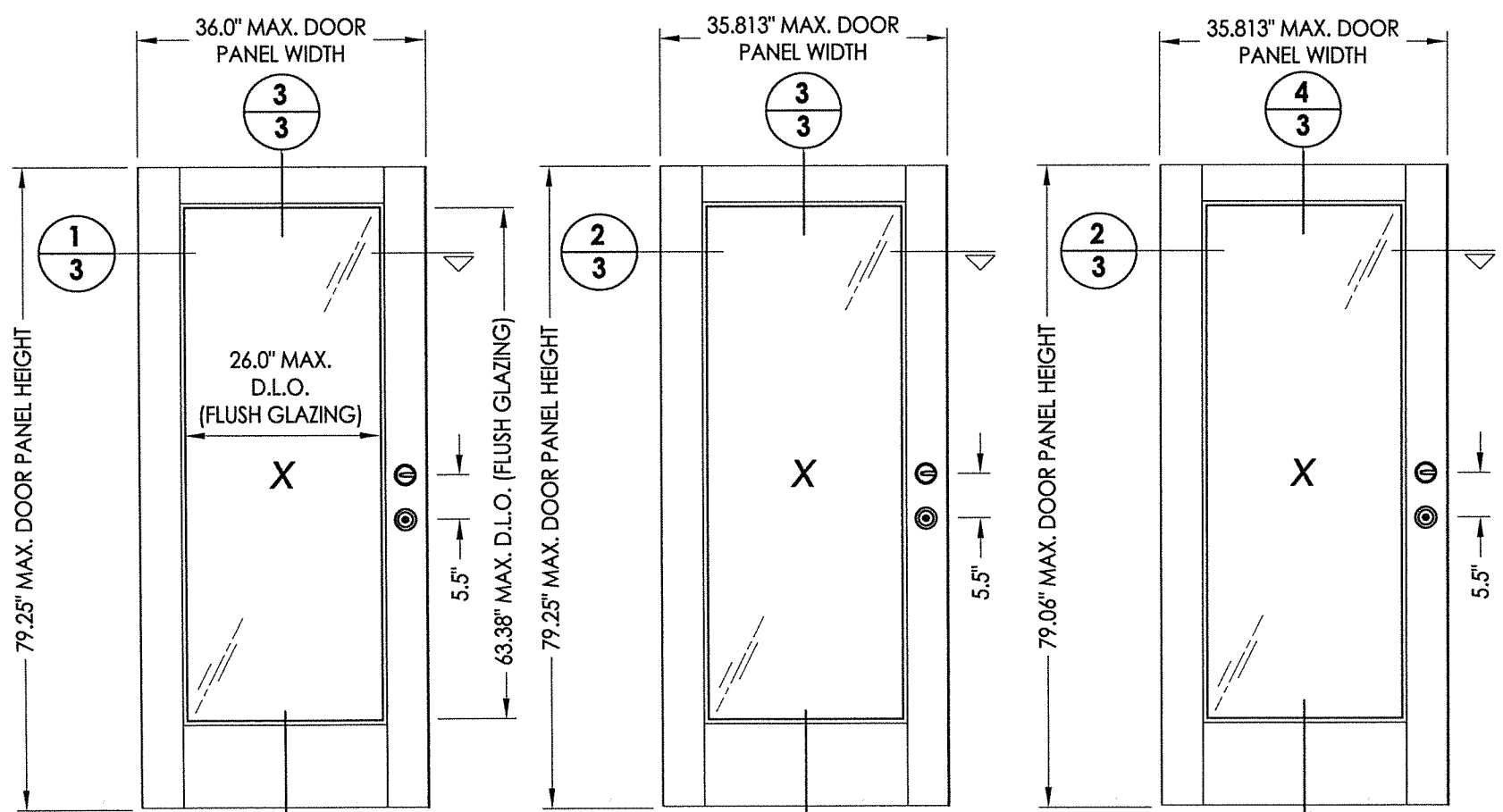
SHEET 2 of 12



1 HORIZONTAL CROSS SECTION
3 Shown w/ Flush Glazing



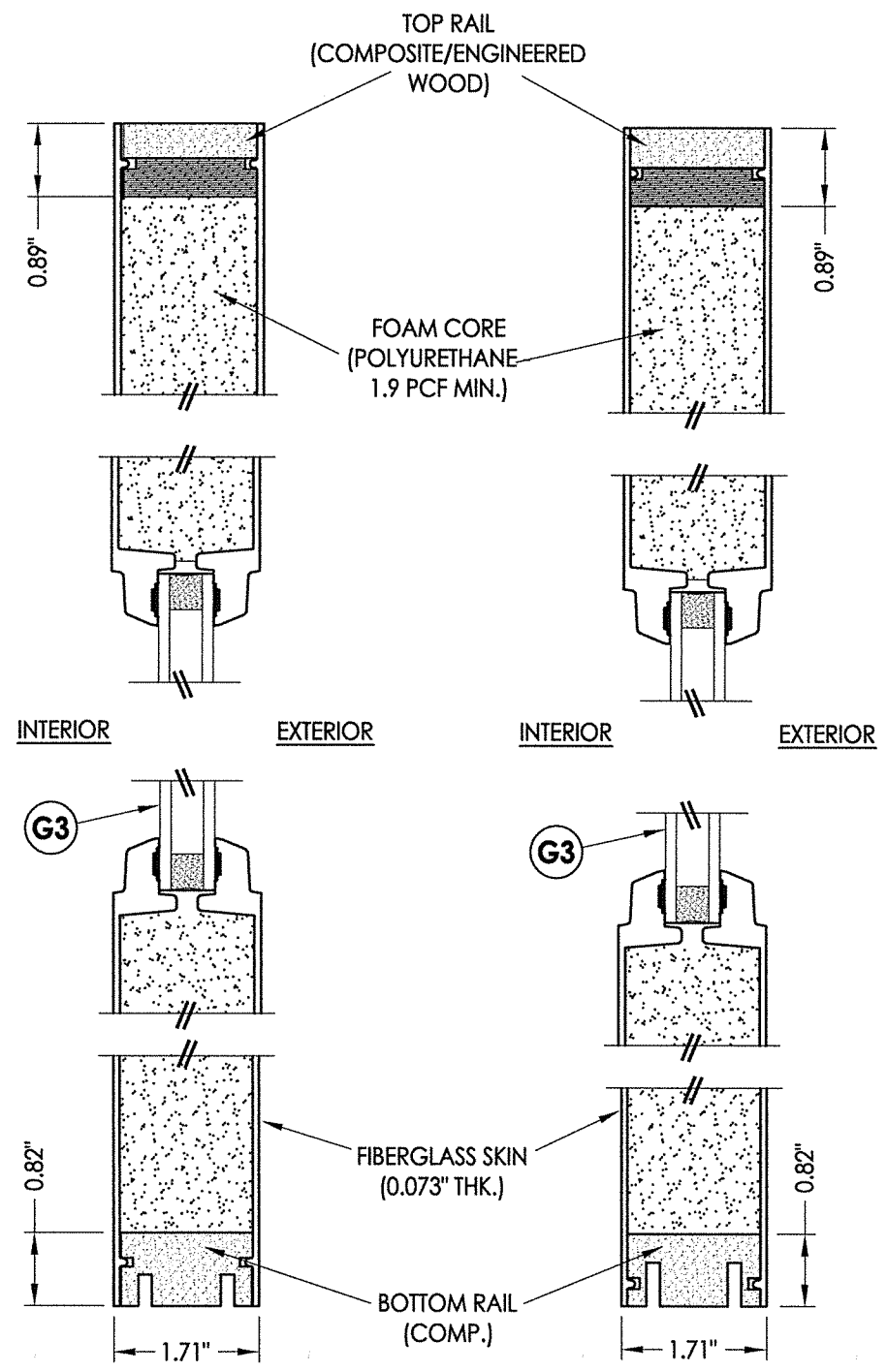
2 HORIZONTAL CROSS SECTION
3 Shown w/ Flush Glazing



43 DOOR PANEL
BOOK

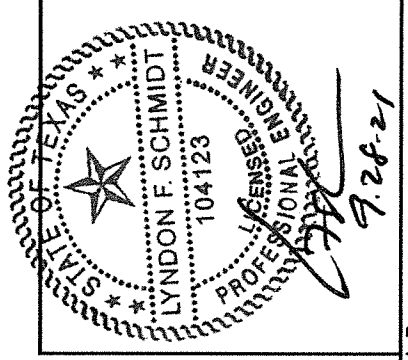
44 DOOR PANEL
Hybrid Door

45 DOOR PANEL
UI Door



3 VERTICAL CROSS SECTION
3 Shown w/ Flush Glazing

4 VERTICAL CROSS SECTION
3 Shown w/ Flush Glazing

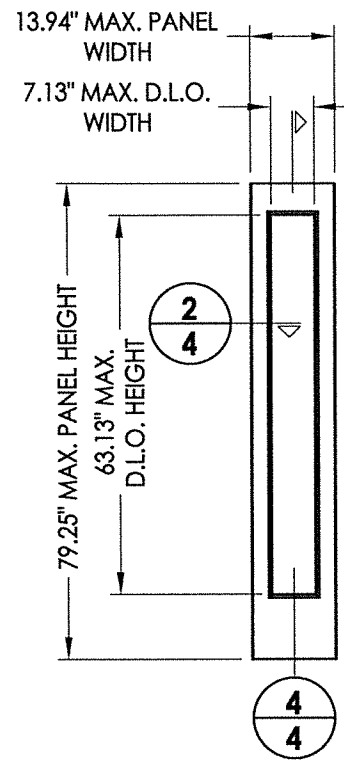


Documents Prepared By: Lyndon F. Schmidt, P.E.
TEXAS P.E. #104123

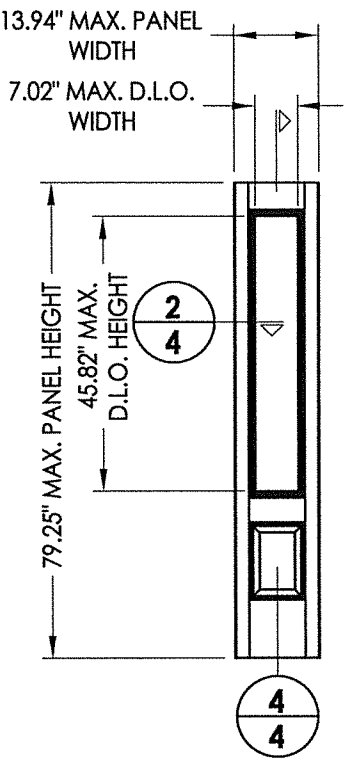
RW BUILDING CONSULTANTS, INC.
P.O. Box 230 Valrico FL 33595
Phone No.: 813.659.9197

CERTIFICATE OF REGISTRATION # F-11852

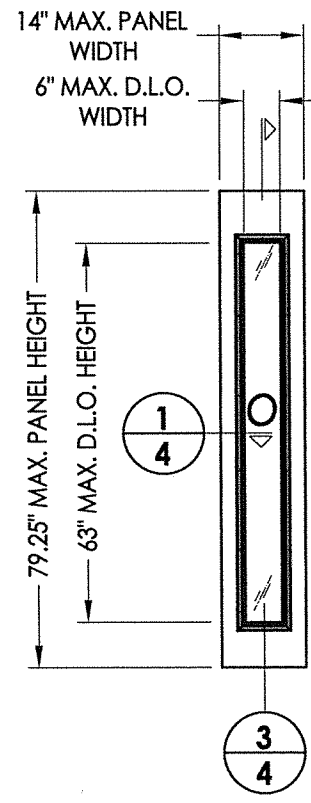
PRODUCT: THERMA-TRU FIBERGLASS DOOR											
PART OR ASSEMBLY: DOOR PANEL DETAILS											
DATE: 11/27/17	SCALE: N.T.S.										
DWG. BY: JK	CHK. BY: LFS										
DRAWING NO.: TX-4763	SHEET 3 OF 12										
<table border="1"> <thead> <tr> <th colspan="2">REVISIONS</th> </tr> <tr> <th>NO.</th> <th>DATE</th> </tr> </thead> <tbody> <tr> <td>1</td> <td>9/27/21</td> </tr> <tr> <td colspan="2">UPDATE TO 2018 IBC/IRC CODE</td> </tr> <tr> <td>LFS</td> <td>BY</td> </tr> </tbody> </table>		REVISIONS		NO.	DATE	1	9/27/21	UPDATE TO 2018 IBC/IRC CODE		LFS	BY
REVISIONS											
NO.	DATE										
1	9/27/21										
UPDATE TO 2018 IBC/IRC CODE											
LFS	BY										



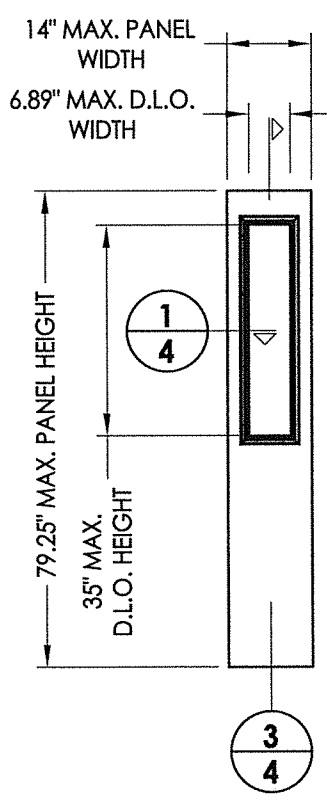
60 SIDELITE PANEL
Full Lite
Flush Glazed



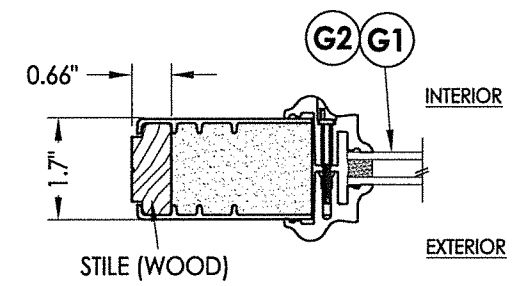
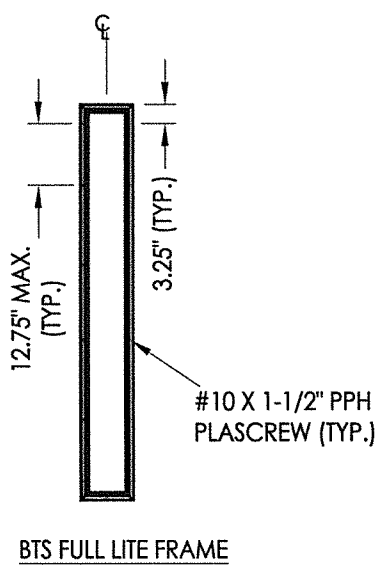
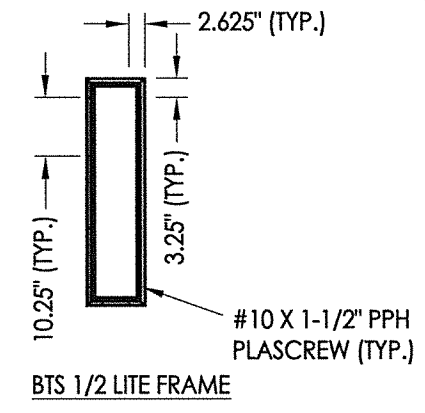
60 SIDELITE PANEL
3/4 Lite
Flush Glazed



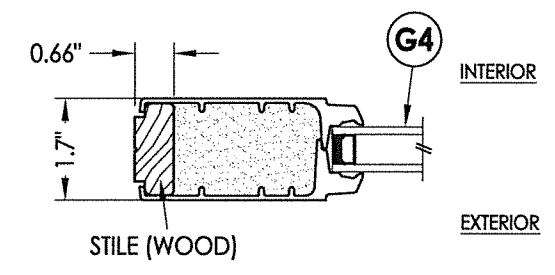
50 SIDELITE PANEL
Full Lite
Lip Lite



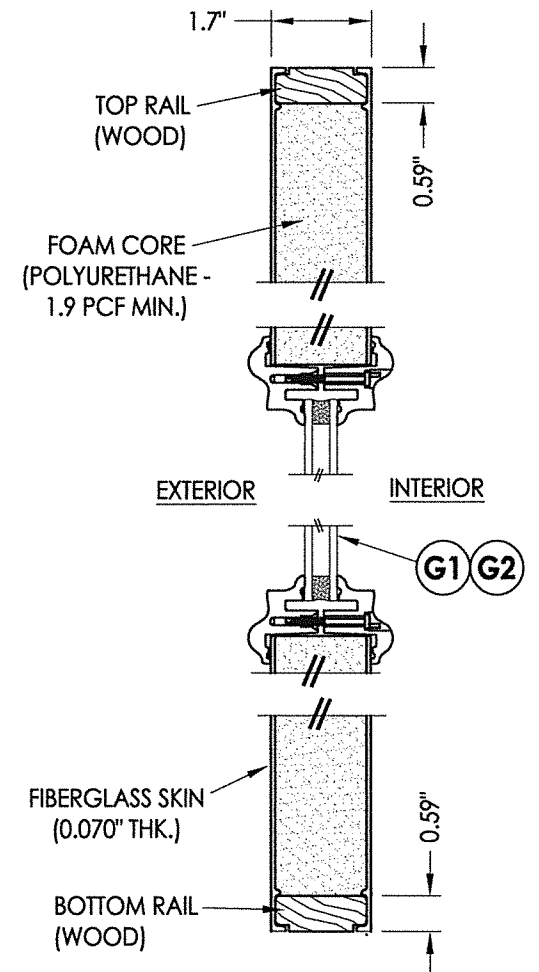
50 SIDELITE PANEL
Half Lite
Lip Lite



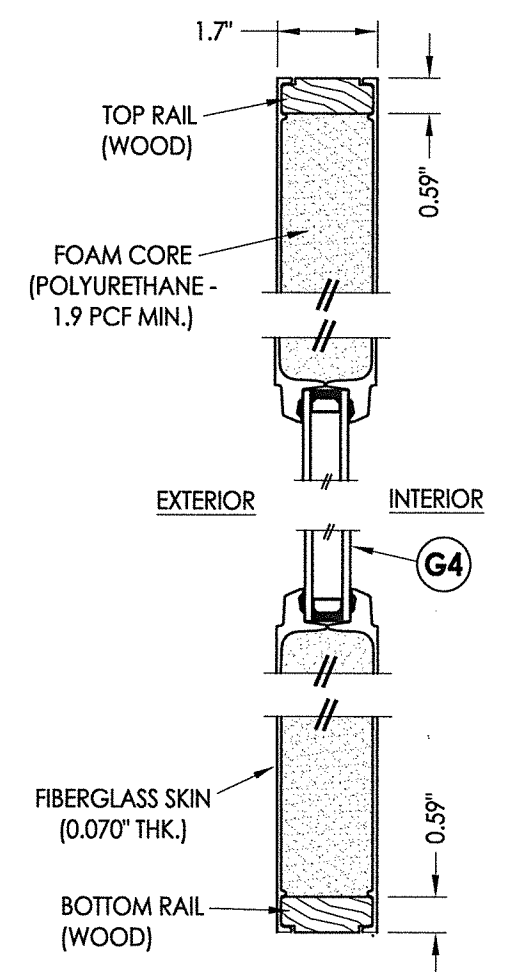
1 HORIZONTAL CROSS SECTION
4 Lip Lite Glazing



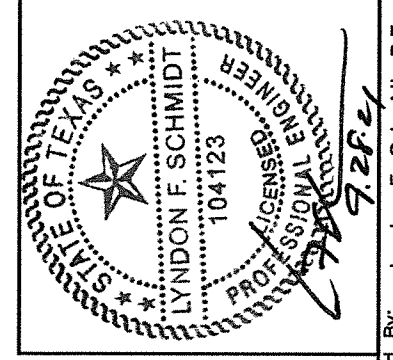
2 HORIZONTAL CROSS SECTION
4 Flush Glazing



3 VERTICAL CROSS SECTION
4 Lip Lite Glazing Shown



4 VERTICAL CROSS SECTION
4 Flush Glazing Shown



Documents Prepared By: Lyndon F. Schmidt, P.E.
TEXAS P.E. #104123

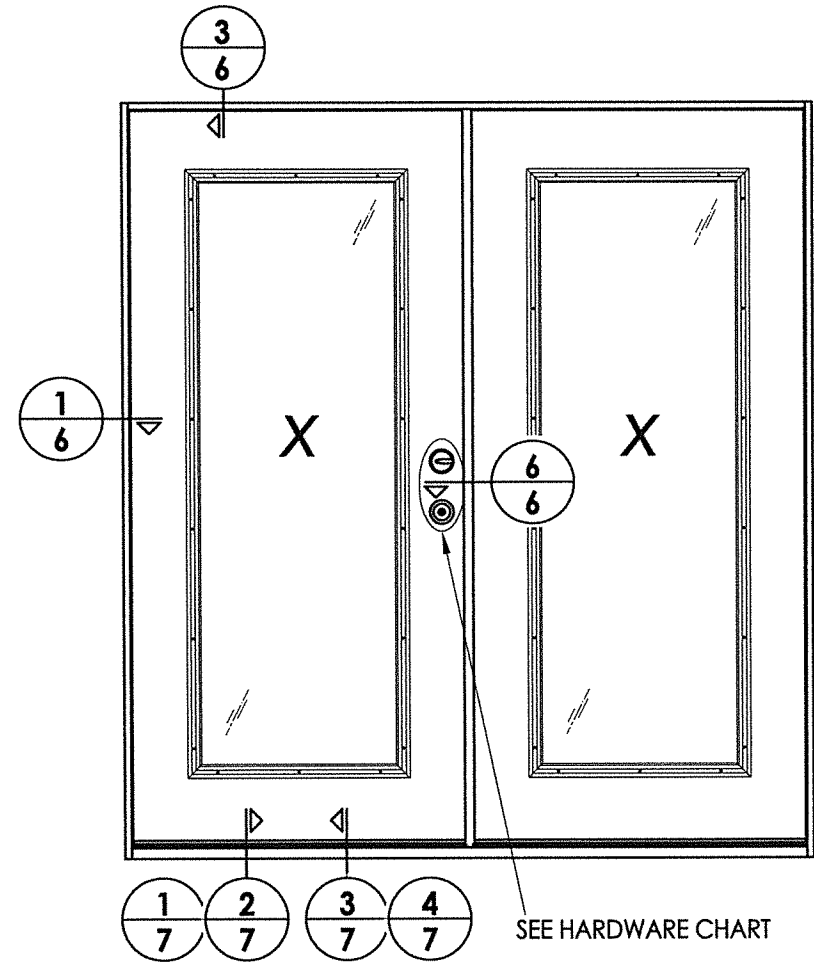
RW BUILDING CONSULTANTS, INC.
P.O. Box 230 Valrico FL 33595
Phone No.: 813.659.9197

PRODUCT: THERMA TRU FIBERGLASS DOOR

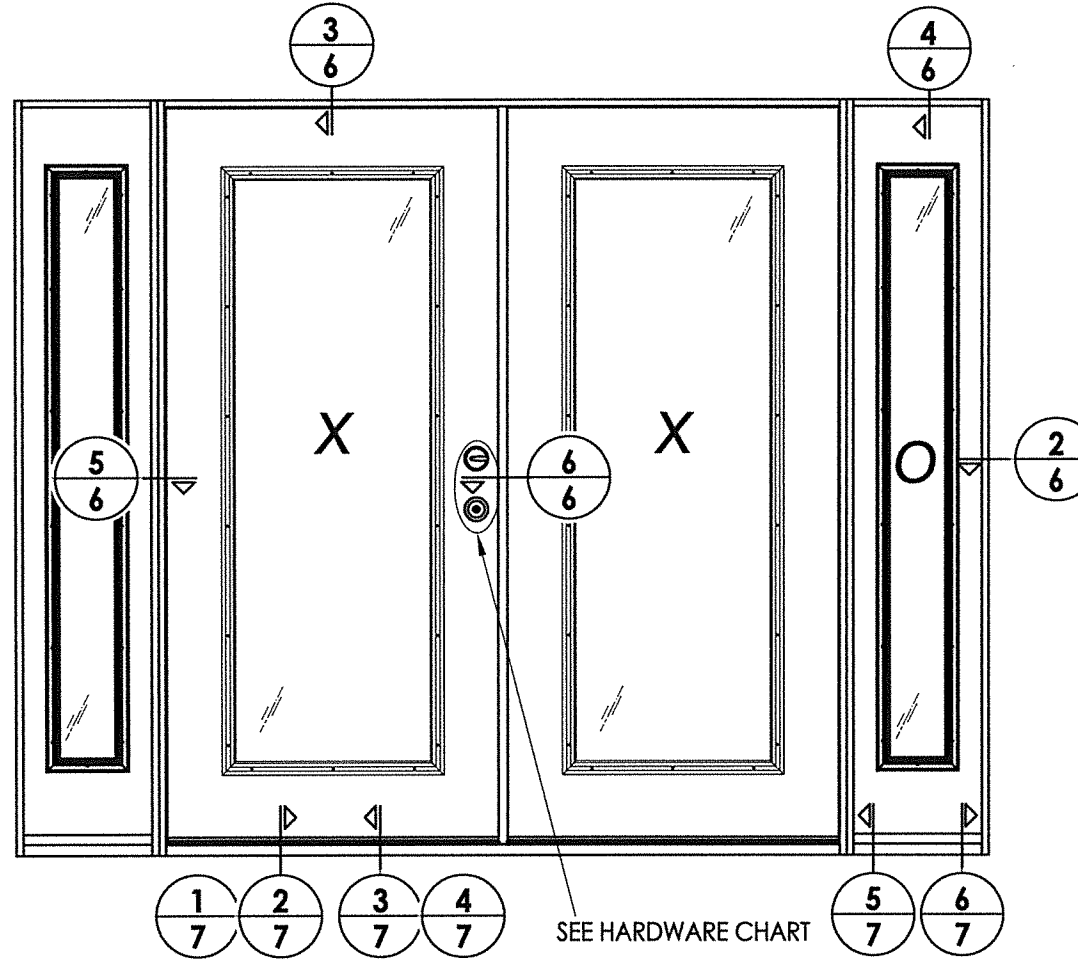
PART OR ASSEMBLY: SIDELITE PANEL DETAILS

NO.	DATE	DESCRIPTION	LFS	BY
1	9/27/21	UPDATE TO 2018 IBC/IRC CODE		

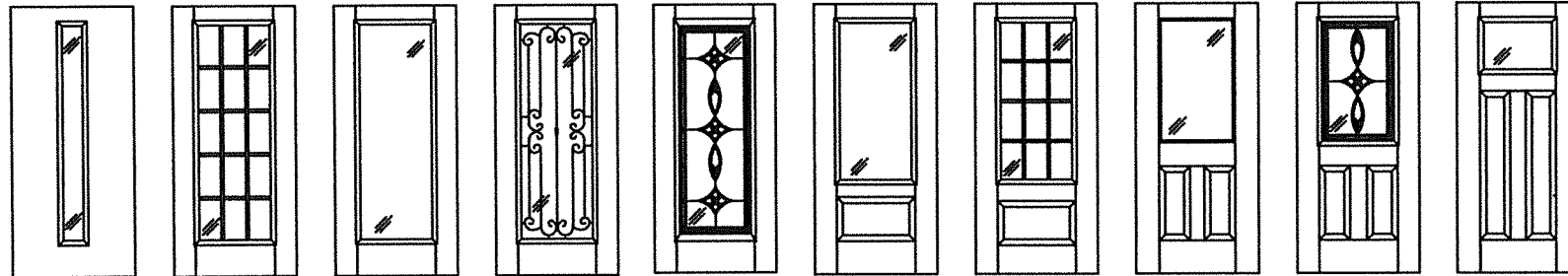
DATE: 11/27/17
SCALE: N.T.S.
DWG. BY: JK
CHK. BY: LFS
DRAWING NO.: TX-4763



ELEVATION
XX

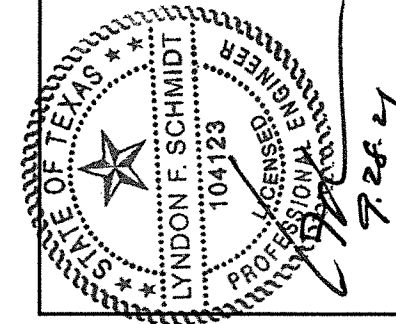


ELEVATION
OXO



Fiber-Classic/Smooth-Star Door Panel Options
Panel options shown are for illustration and are representative only
(similar glazed panel configurations are allowed)

HARDWARE TABLE	
MANUFACTURER	MODEL
SCHLAGE	KNOB: F51 DEADBOLT: B60
KWIKSET	KNOB: SIGNATURE SERIES DEADBOLT: SIGNATURE SERIES (980)
HOPPE (THERMA-TRU)	MULTIPOINT : MPDGSB (3 pt. Manual Shootbolt)



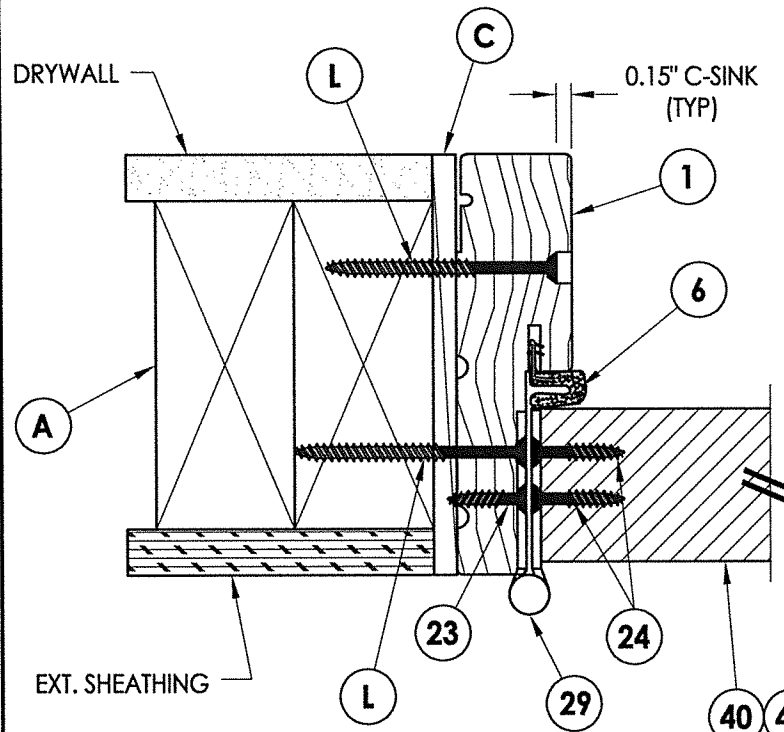
Documents Prepared By: Lyndon F. Schmidt, P.E.
TEXAS P.E. #104123

RW BUILDING CONSULTANTS, INC.
P.O. Box 230 Valrico FL, 33595
Phone No.: 813.659.9197

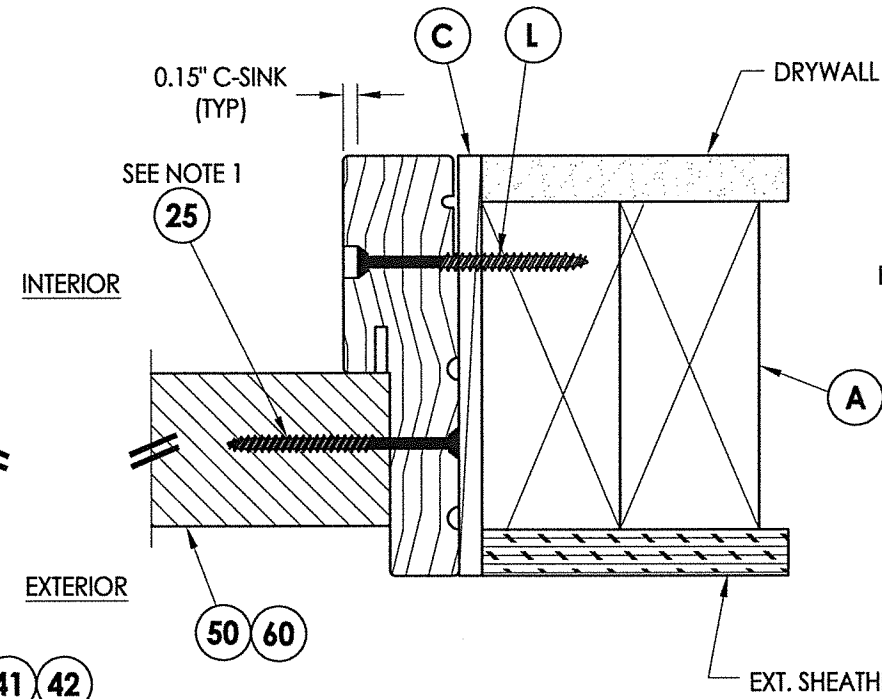
CERTIFICATE OF REGISTRATION # F-11852

PRODUCT:	THERMA-TRU FIBERGLASS DOOR	
PART OR ASSEMBLY:	ELEVATIONS	
DATE:	11/27/17	
SCALE:	N.T.S.	
DWG. BY:	JK	
CHK. BY:	LFS	
DRAWING NO.:	TX-4763	
SHEET	5 OF 12	
NO.	DATE	REVISIONS
1	9/27/21	UPDATE TO 2018 IBC/IRC CODE
		LFS
		BY

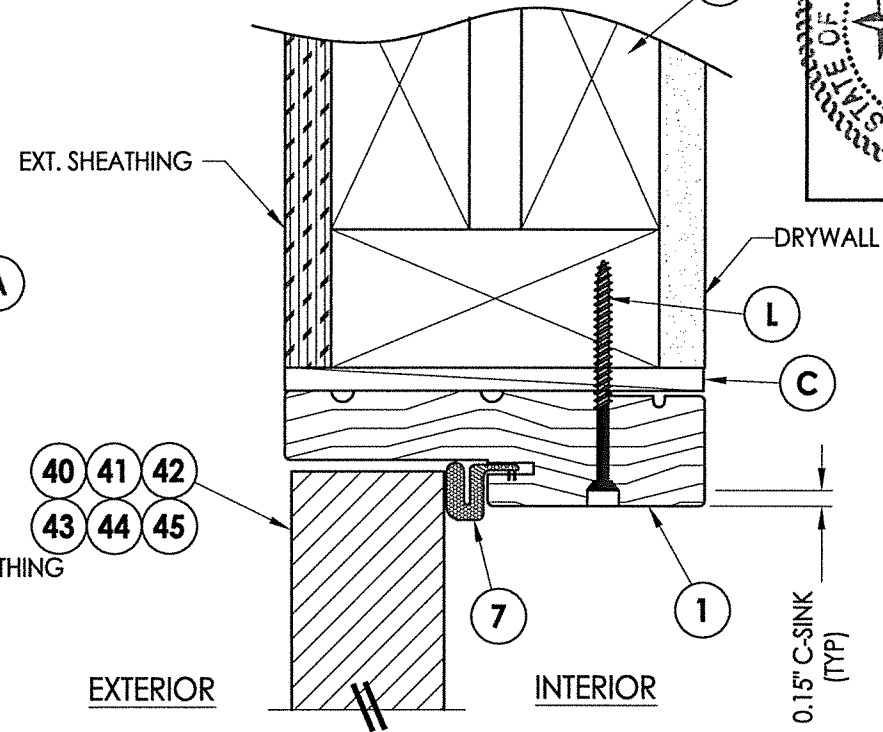
Z:\Clients\Therma Tru PERMANENT\B - Texas Dept of Ins\TDI - DR 946 - 6'8 & 8'0 Glazed Comp Edge Non-Impact (TX 4761 - 4770)\C - Drawings\TX-4761-63.dwg



1 HORIZONTAL CROSS SECTION
6 Shown w/ 2X Buck
 Outswing shown (Inswing similar)

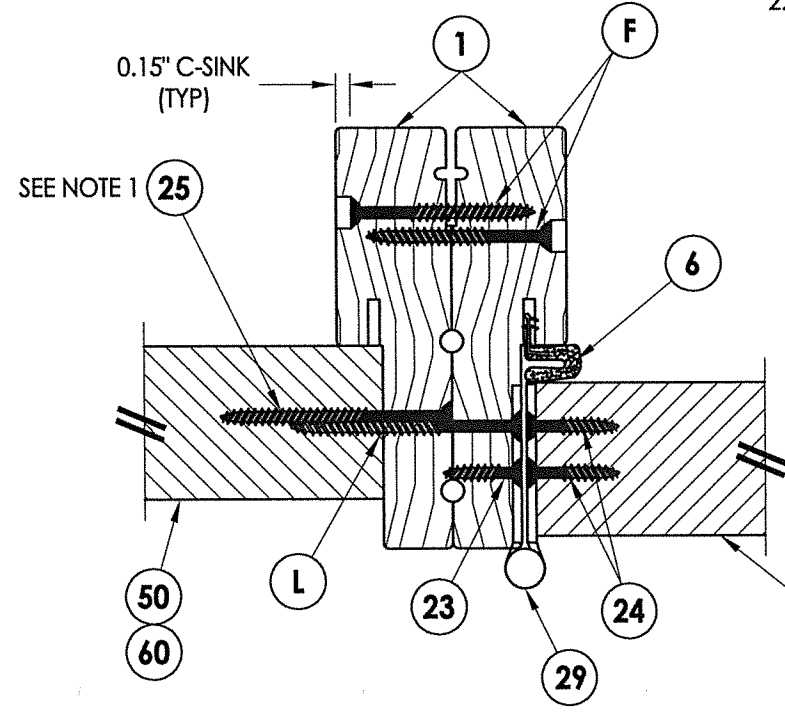


2 HORIZONTAL CROSS SECTION
6 Shown w/ 2X Buck
 Outswing shown (Inswing similar)

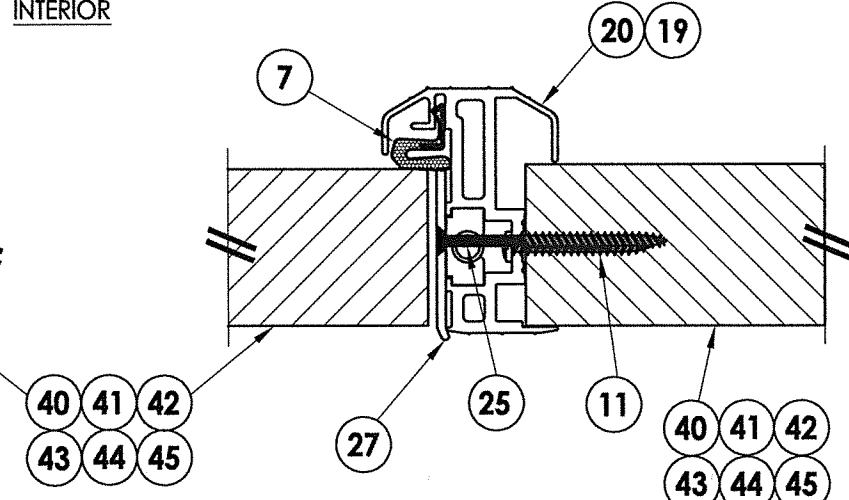


3 VERTICAL CROSS SECTION
6 Shown w/ 2X Buck
 Outswing shown (Inswing similar)

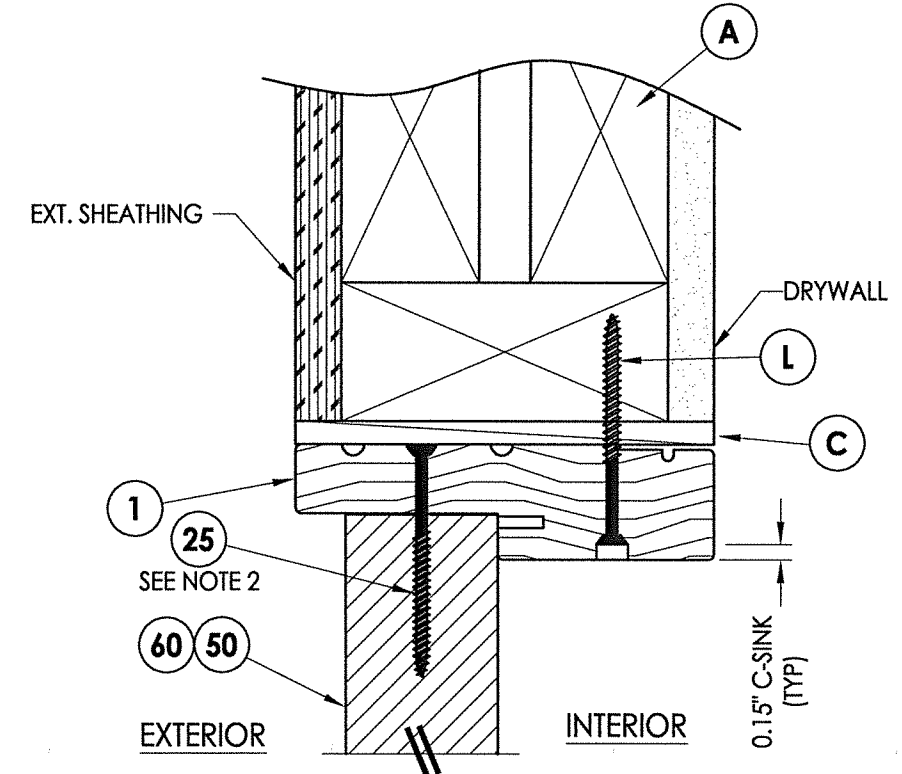
Notes:
 1. Sidelite assembly screws located 7" from top and 14" from bottom & 2 more screws equally spaced between (4 screws total per side jamb).
 2. Sidelite assembly screws located 4" from each end (2 screws along head jamb).



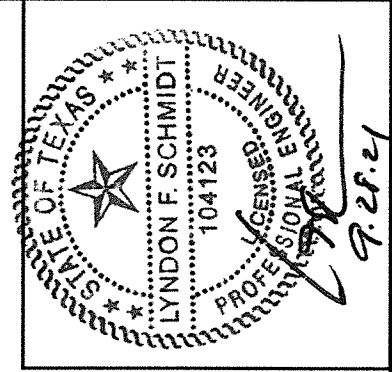
5 HORIZONTAL CROSS SECTION
6 Outswing shown (Inswing similar)



6 HORIZONTAL CROSS SECTION
6 Outswing shown (Inswing similar)



4 VERTICAL CROSS SECTION
6 Shown w/ 2X Buck
 Outswing shown (Inswing similar)



Documents Prepared By: Lyndon F. Schmidt, P.E.
 TEXAS P.E. #104123

RW BUILDING CONSULTANTS, INC.
 P.O. Box 230 Valrico FL 33595
 Phone No.: 813.659.9197

CERTIFICATE OF REGISTRATION # F-11852

PRODUCT:	Therma-TRU FIBERGLASS DOOR
PART OR ASSEMBLY:	HORIZONTAL & VERTICAL CROSS SECTIONS

NO.	DATE	DESCRIPTION	LFS	BY
1	9/27/21	UPDATE TO 2018 IBC/IRC CODE	LFS	BY

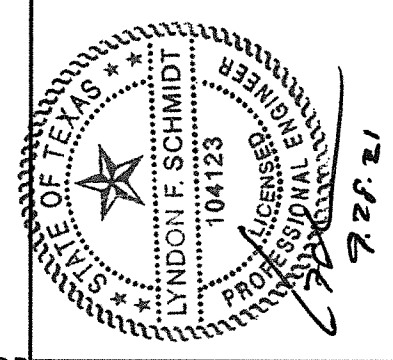
DATE:	11/27/17
SCALE:	N.T.S.
DWG. BY:	JK
CHK. BY:	LFS
DRAWING NO.:	TX-4763
SHEET	6 OF 12

© 2017 R.W. BUILDING CONSULTANTS INC.

Z:\Clients\Therma Tru PERMANENT\B - Texas Dept of Ins\TDI - DR 946 - 68 & 8'0 Glazed Comp Edge Non-Impact\TX 4761 - 4770\C - Drawings\TX-4761-63.dwg

Notes:

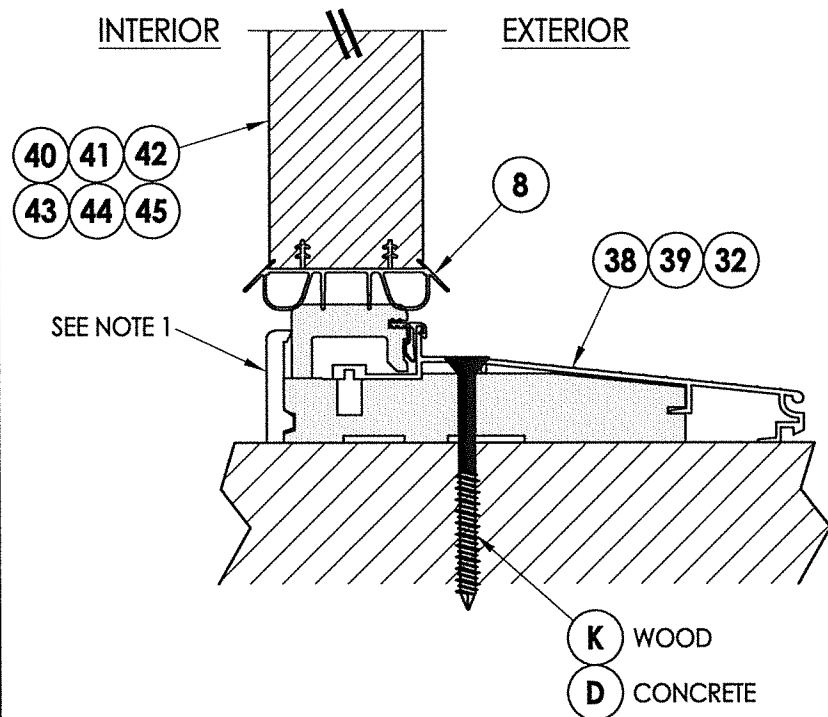
- Sill Item #'s 16, 32, 34, 35, 36, 37, 38 & 39 are attached to jambs w/ (3) #8 X 2-1/2" pfh screws at each end.
Sill Item #'s 17 & 18 are attached to jambs w/ (2) #8 X 2-1/2" pfh screws at each end.
Sill Item #15 is attached to jambs utilizing (2) #10 X 2" pph screws at each end.
- Sidelite assembly screws located 4" from each end (2 screws along sill).



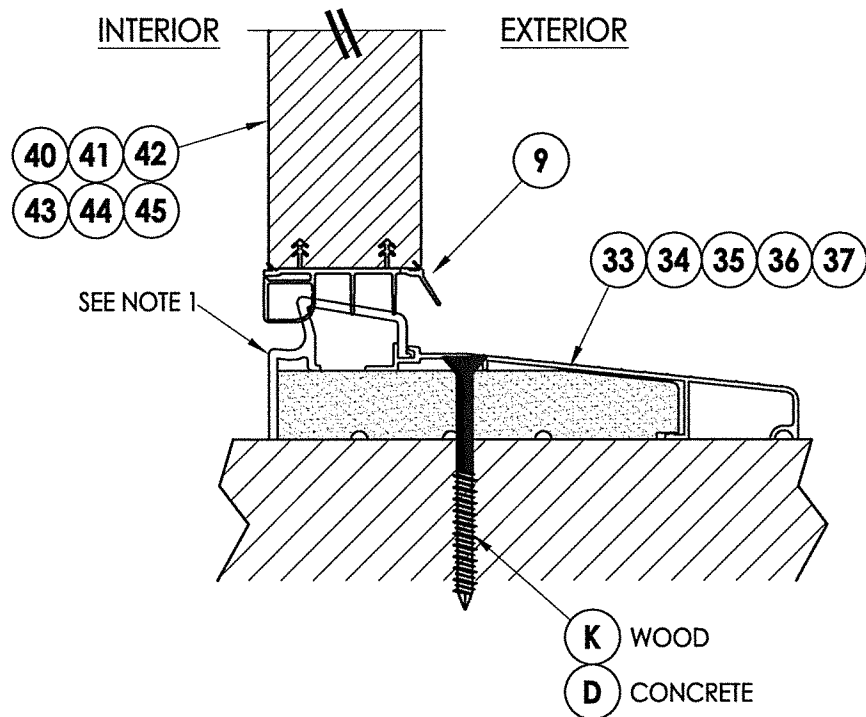
Documents Prepared By: Lyndon F. Schmidt, P.E.
TEXAS P.E. #104123

RW BUILDING CONSULTANTS, INC.
P.O. Box 230 Valrico FL 33595
Phone No.: 813.659.9197

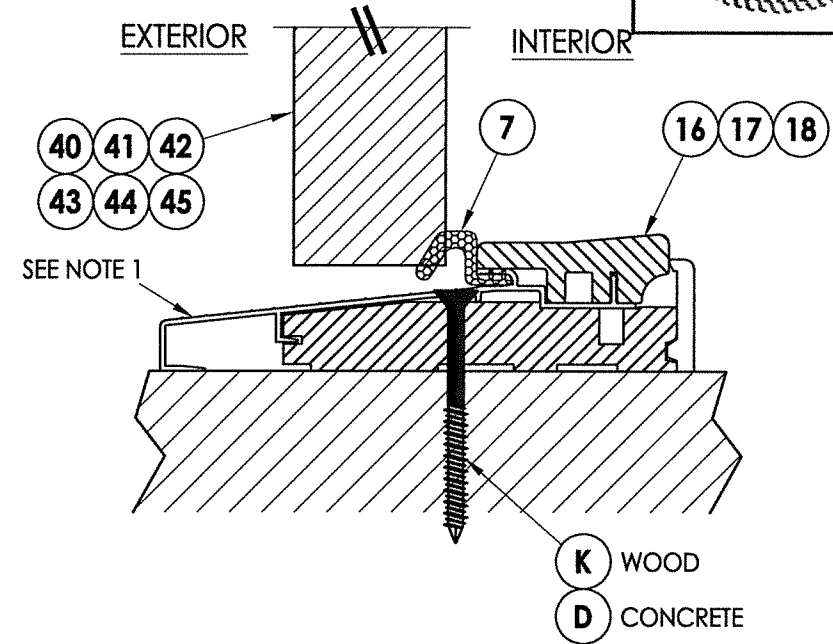
CERTIFICATE OF REGISTRATION # F-11852



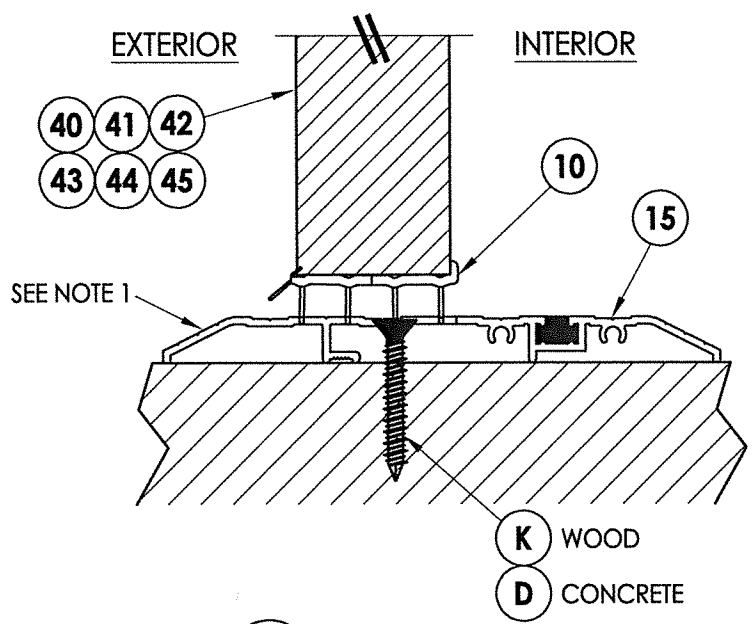
1 VERTICAL CROSS SECTION
7 Inswing Sill



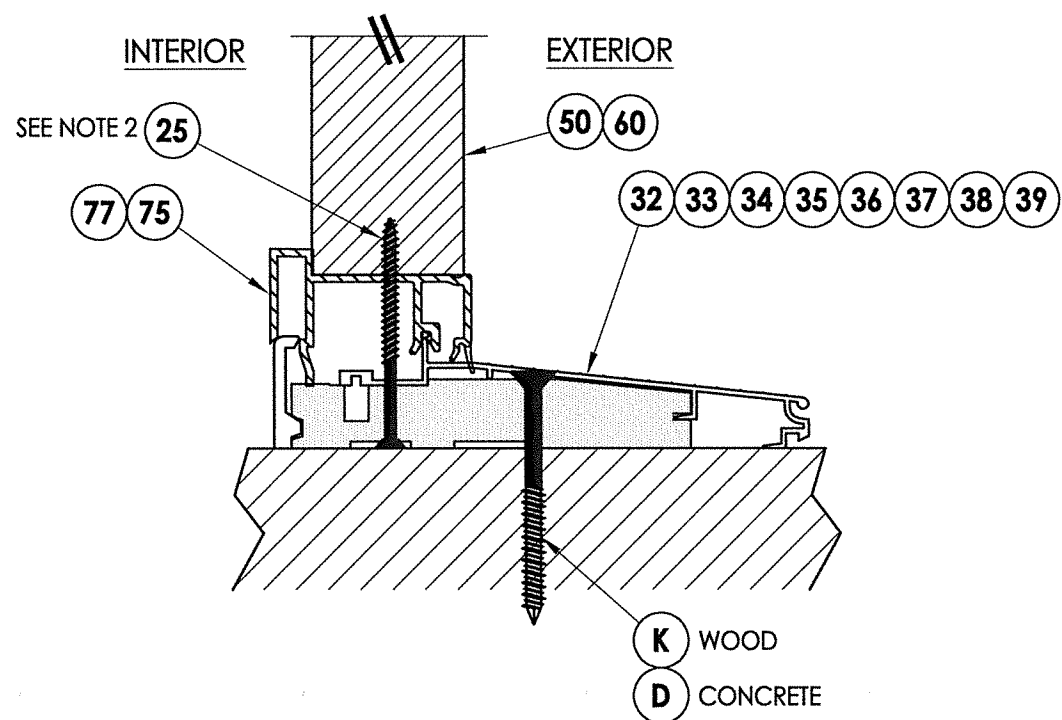
2 VERTICAL CROSS SECTION
7 Inswing Sill



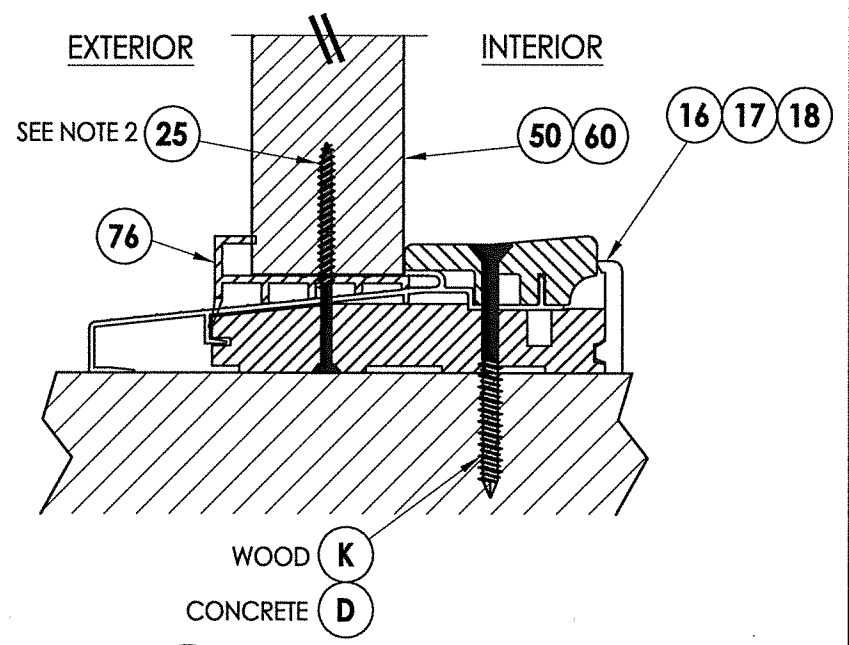
3 VERTICAL CROSS SECTION
7 Outswing Sill



4 VERTICAL CROSS SECTION
7 Public Access Sill

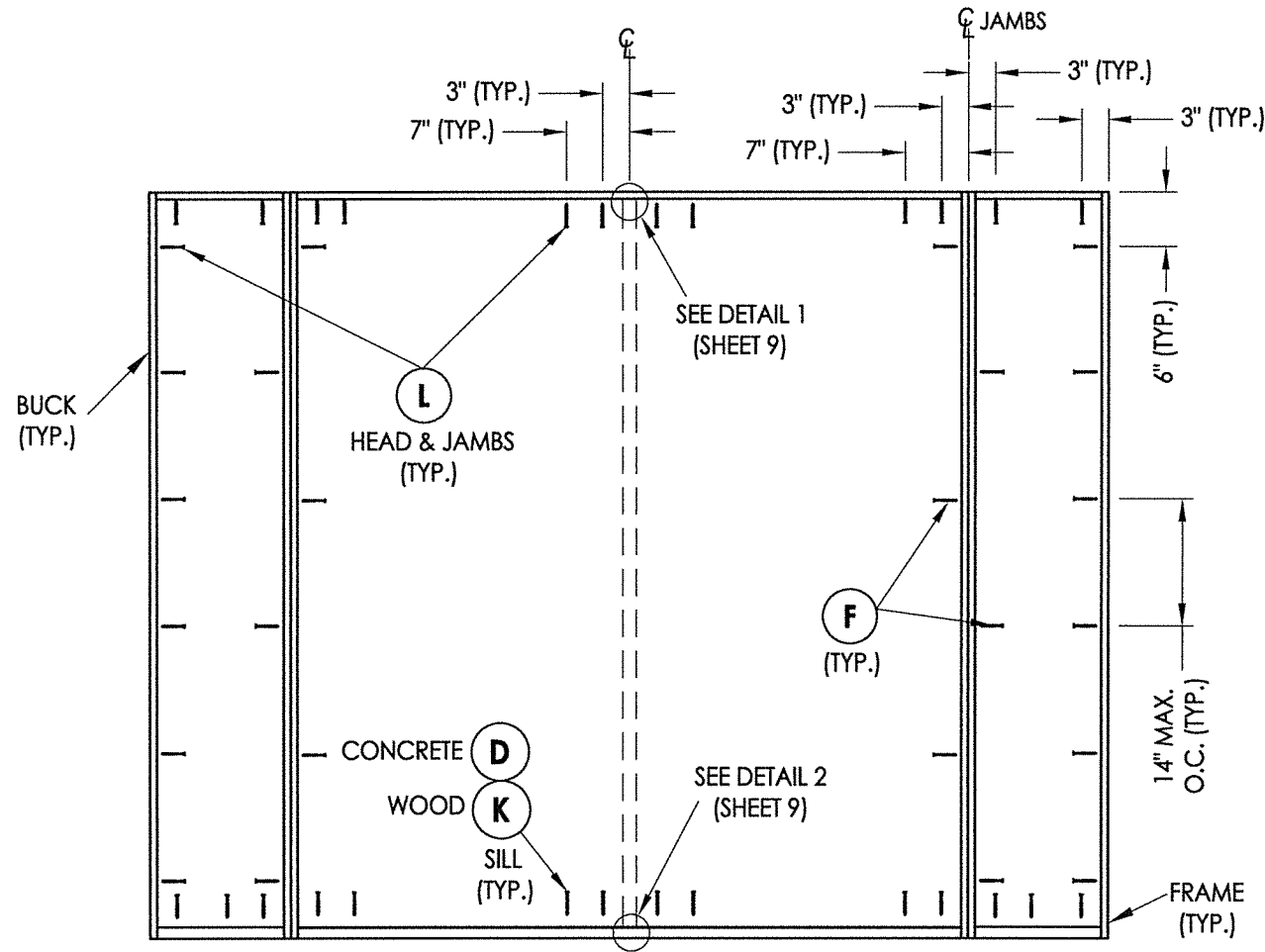
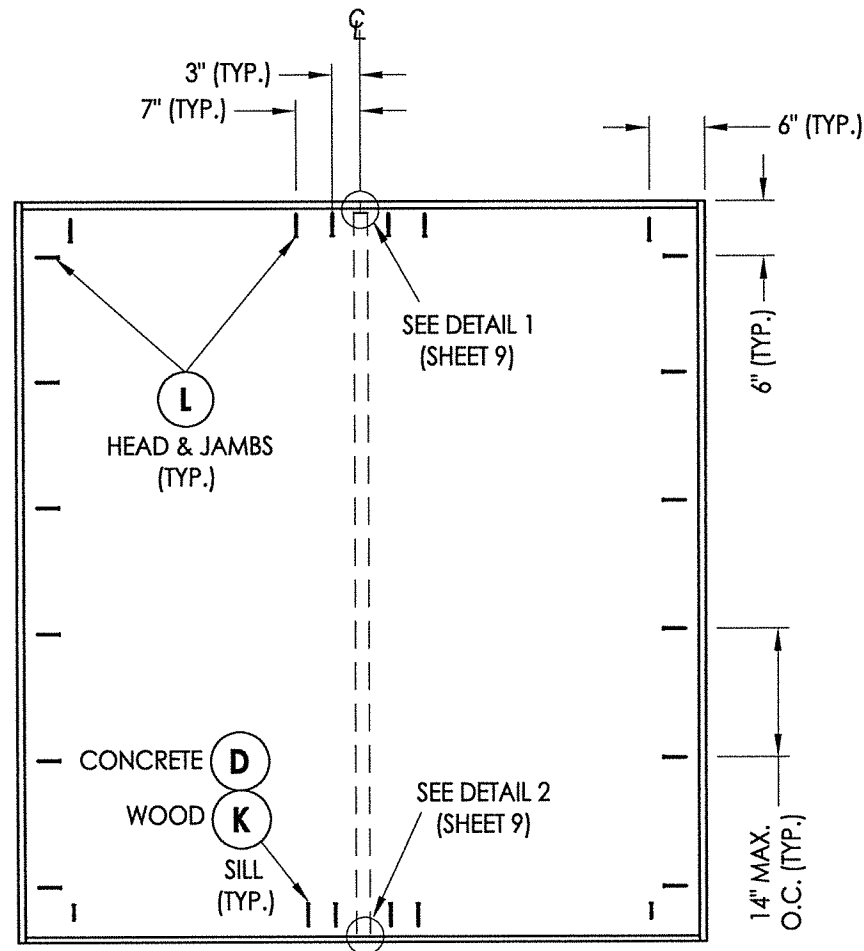
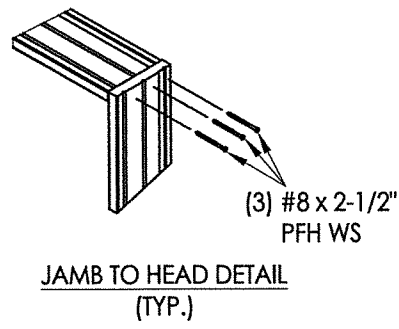


5 VERTICAL CROSS SECTION
7 Inswing Sill

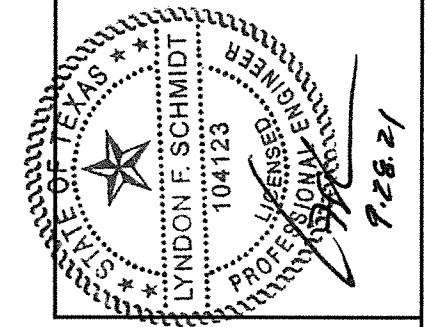


6 VERTICAL CROSS SECTION
7 Outswing Sill

PRODUCT:	Therma-TRU FIBERGLASS DOOR	
PART OR ASSEMBLY:	VERTICAL CROSS SECTIONS (THRESHOLDS)	
NO.	DATE	BY
1	9/27/21 UPDATE TO 2018 IBC/IRC CODE	LFS
REVISIONS		
DATE: 11/27/17		
SCALE: N.T.S.		
DWG. BY: JK		
CHK. BY: LFS		
DRAWING NO.: TX-4763		
SHEET 7 OF 12		



FRAME ANCHORING



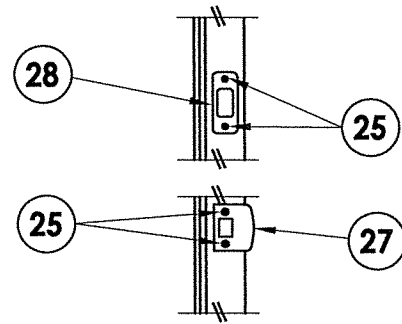
Documents Prepared By: Lyndon F. Schmidt, P.E.
TEXAS P.E. #104123

RW BUILDING CONSULTANTS, INC.
P.O. Box 230 Valrico FL 33595
Phone No.: 813.659.9197

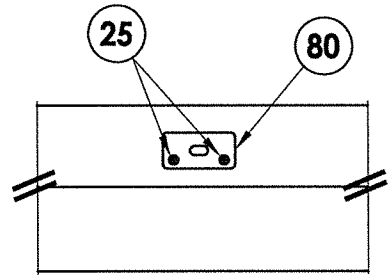
CERTIFICATE OF REGISTRATION # F-11852

PRODUCT:	THERMA-TRU FIBERGLASS DOOR	
PART OR ASSEMBLY:	FRAME ANCHORING	
NO.	DATE	BY
1	9/27/21	LFS
UPDATE TO 2018 IBC/IRC CODE		

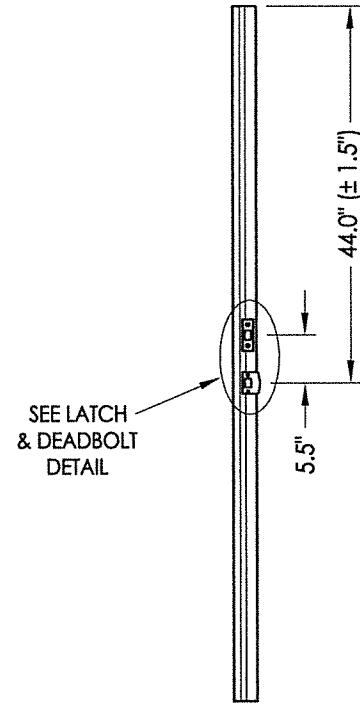
DATE:	11/27/17
SCALE:	N.T.S.
DWG. BY:	JK
CHK. BY:	LFS
DRAWING NO.:	TX-4763
SHEET	8 OF 12



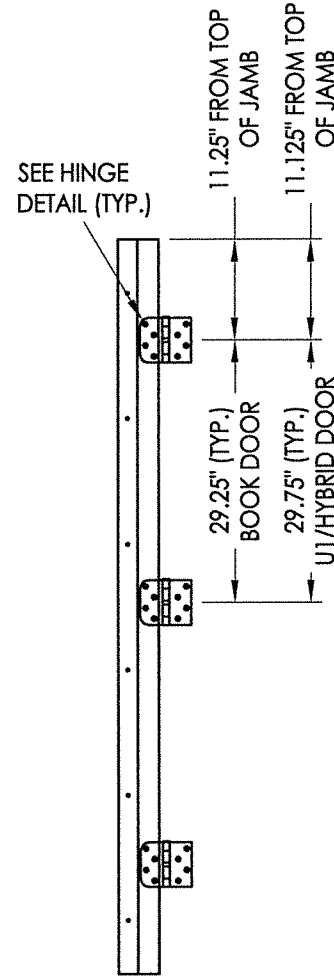
LATCH & DEADBOLT DETAIL
Schlage / Kwikset



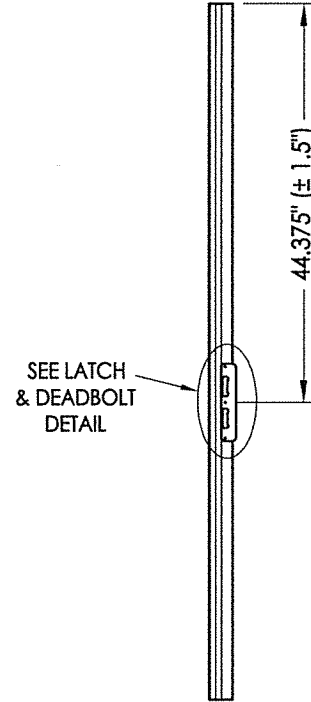
DETAIL 1
Coastal Astragal Strike Plate @ Head



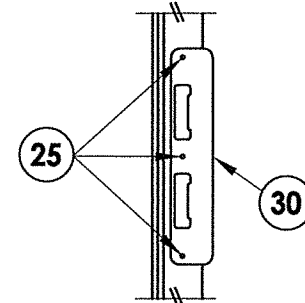
ASTRAGAL
Latch and Deadbolt



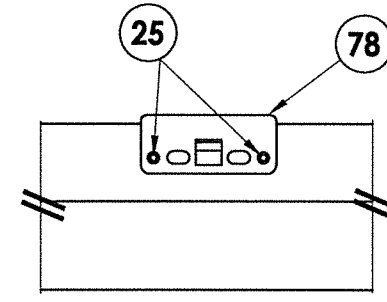
HINGE JAMB



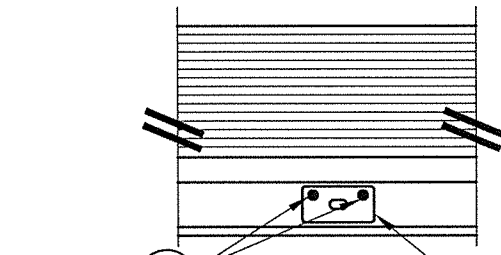
ASTRAGAL
Multipoint Lock



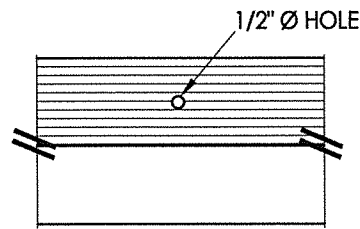
LATCH & DEADBOLT DETAIL
Multipoint Lock



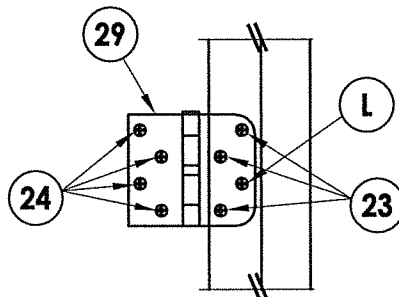
DETAIL 1
Multipoint Lock Strike Plate @ Head



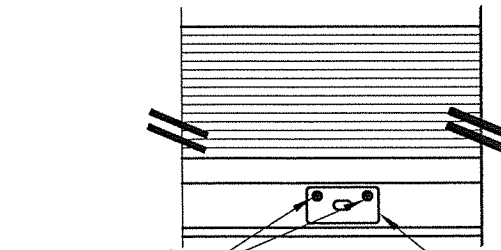
DETAIL 2
Inswing
Coastal Astragal Strike Plate @ Sill



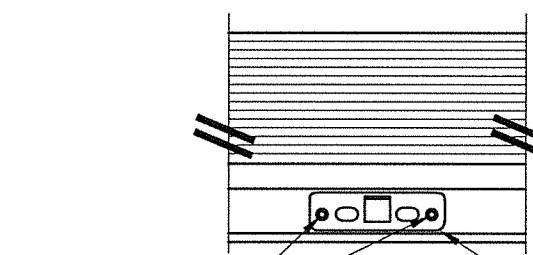
DETAIL 2
Outswing
Astragal Bolt Hole @ Sill



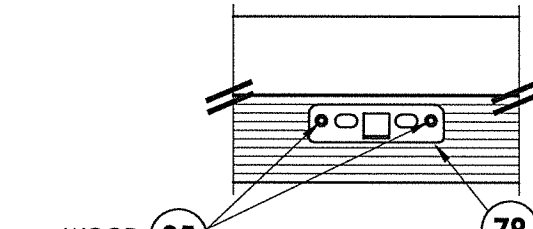
HINGE DETAIL



DETAIL 2
Inswing
Coastal Astragal Strike Plate @ Sill

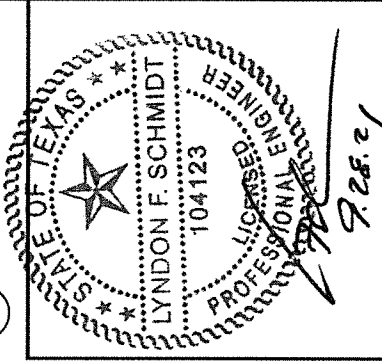


DETAIL 2
Inswing
Multipoint Lock Strike Plate @ Sill



DETAIL 2
Outswing
Multipoint Lock Strike Plate @ Sill

MULTIPOINT LOCK STRIKE DETAILS



Documents Prepared By: Lyndon F. Schmidt, P.E.
TEXAS P.E. #104123

RW BUILDING CONSULTANTS, INC.
P.O. Box 230 Valrico FL 33595
Phone No.: 813.659.9197

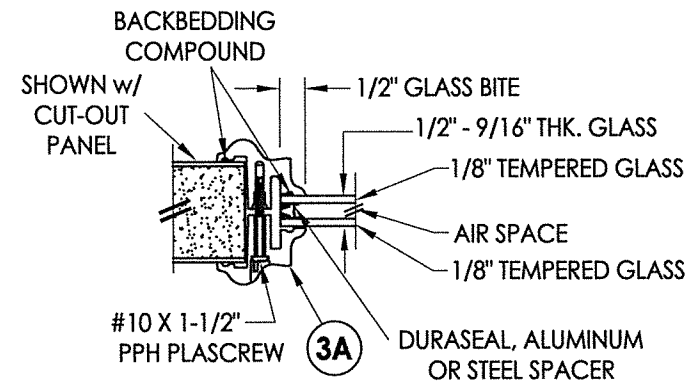
CERTIFICATE OF REGISTRATION # F-11852

PRODUCT:	THERMA-TRU FIBERGLASS DOOR
PART OR ASSEMBLY:	HARDWARE DETAILS

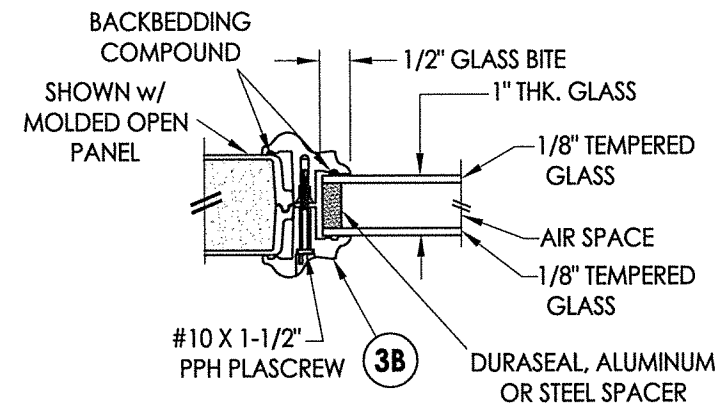
NO.	DATE	DESCRIPTION	LFS	BY
1	9/27/21	UPDATE TO 2018 IBC/IRC CODE	LFS	

DATE:	11/27/17
SCALE:	N.T.S.
DWG. BY:	JK
CHK. BY:	LFS
DRAWING NO.:	TX-4763
SHEET	9 of 12

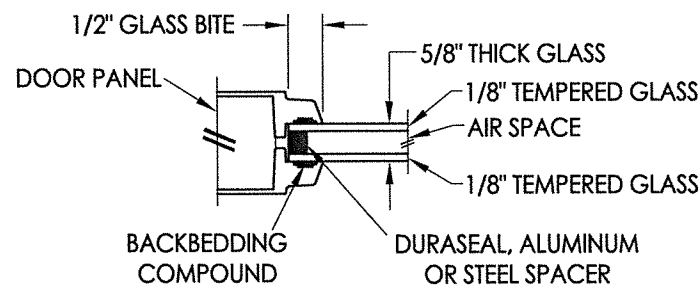
Z:\Clients\Therma Tru Permanent\B - Texas Dept of Ins\TDI - DR 946 - 6'8 & 8'0 Glazed Comp Edge Non-Impact (TX 4761 - 4770)\C - Drawings\TX-4761-63.dwg



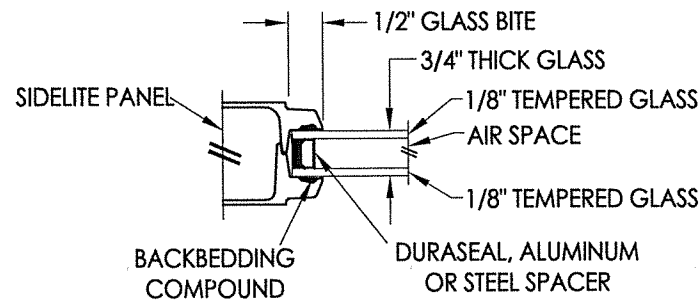
G1 GLAZING DETAIL
BTS Lite Frame
Door Panels & Sidelites



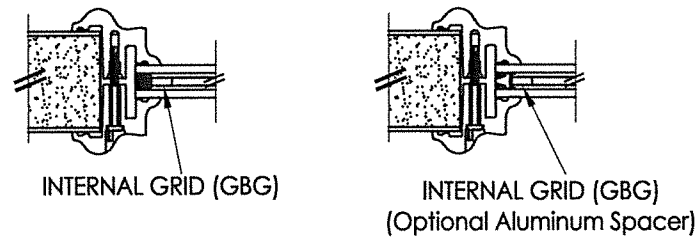
G2 GLAZING DETAIL
BTS Lite Frame
Door Panels & Sidelites



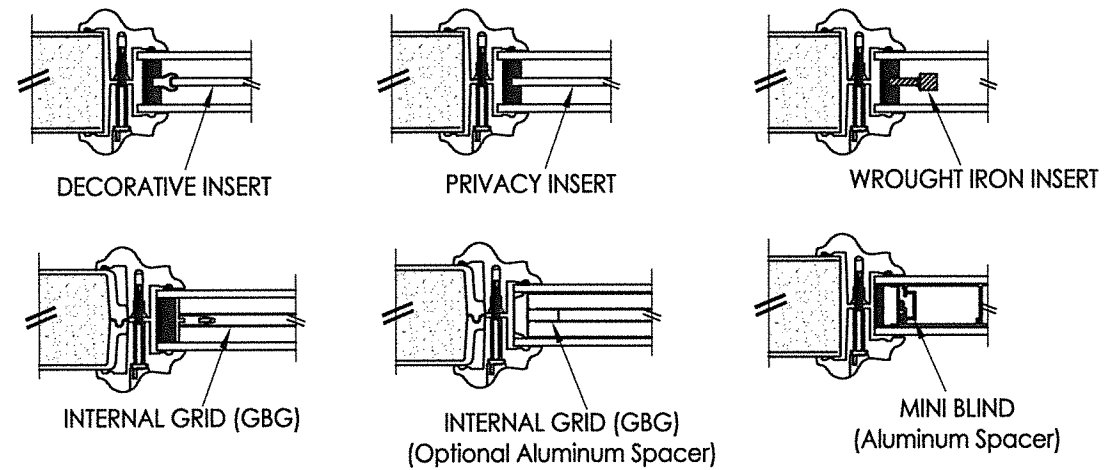
G3 GLAZING DETAIL
Flush Glazing
Door Panels



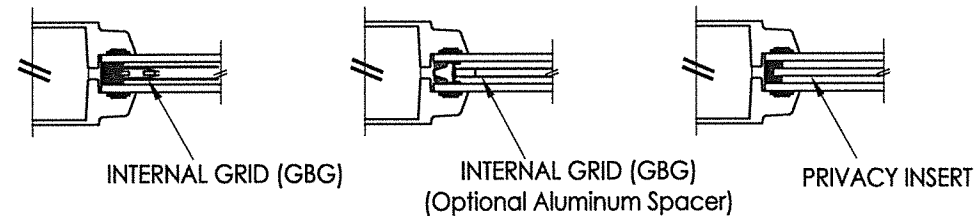
G4 GLAZING DETAIL
Flush Glazing
Sidelites



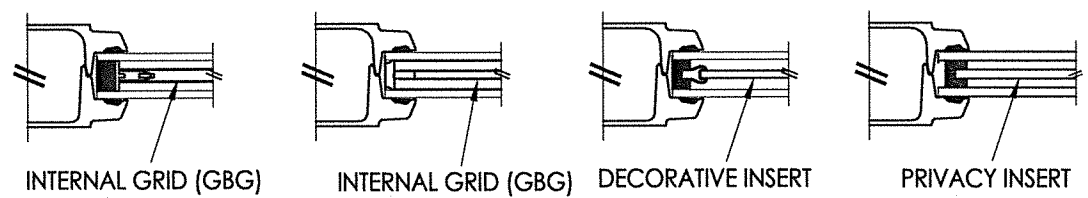
9/16" INSULATED GLASS INSERT OPTIONS



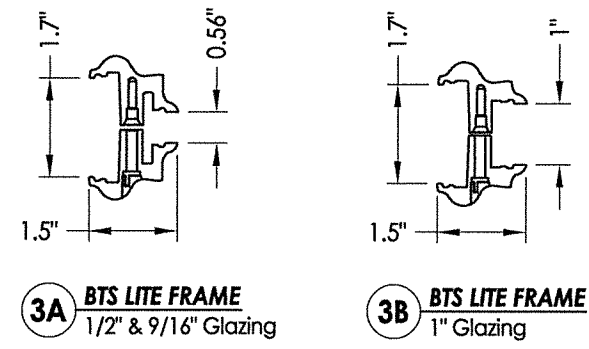
1" INSULATED GLASS INSERT OPTIONS



5/8" INSULATED GLASS INSERT OPTIONS

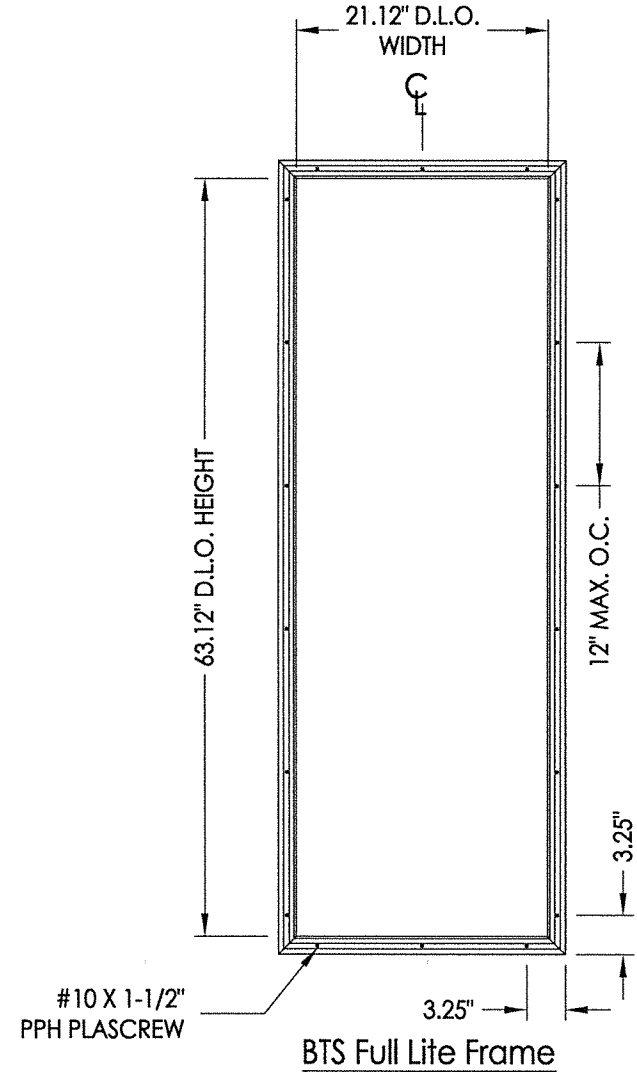


3/4" INSULATED GLASS INSERT OPTIONS

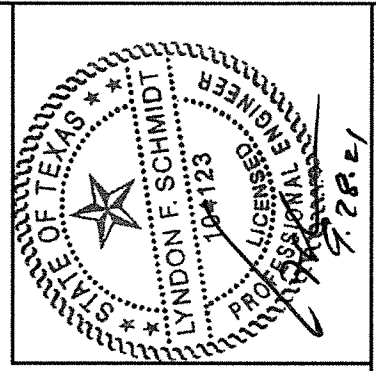


3A BTS LITE FRAME
1/2" & 9/16" Glazing

3B BTS LITE FRAME
1" Glazing



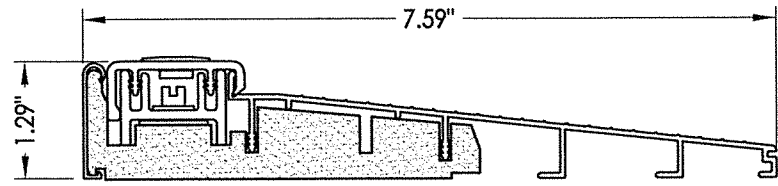
BTS Full Lite Frame



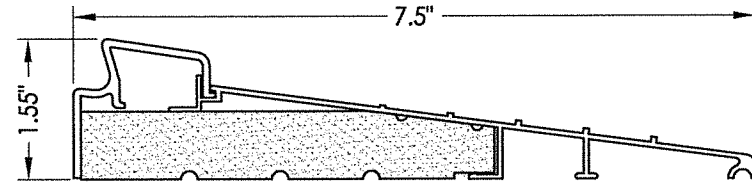
Documents Prepared By: Lyndon F. Schmidt, P.E.
TEXAS P.E. #104123
RW BUILDING CONSULTANTS, INC.
P.O. Box 230 Valrico FL 33595
Phone No.: 813.659.9197
CERTIFICATE OF REGISTRATION # F-11852

PRODUCT: THERMA-TRU FIBERGLASS DOOR		PART OR ASSEMBLY: GLAZING DETAILS	
NO.	DATE	BY	REVISIONS
1	9/27/21	LFS	UPDATE TO 2018 IBC/IRC CODE
DATE: 11/27/17			
SCALE: N.T.S.			
DWG. BY: JK			
CHK. BY: LFS			
DRAWING NO.: TX-4763			
SHEET 10 OF 12			

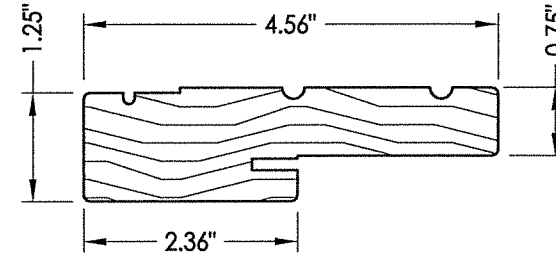
© 2017 R.W. BUILDING CONSULTANTS INC.



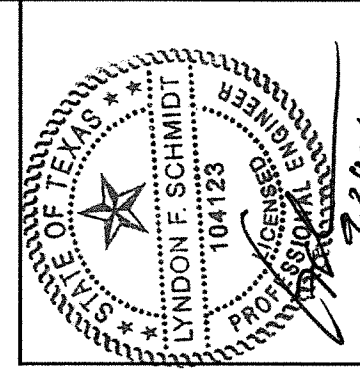
32 INSWING THRESHOLD
Inswing Basic Composite Adjustable Sill 7-1/2"



37 INSWING THRESHOLD
Inswing Basic Fixed 7-1/2" Sill



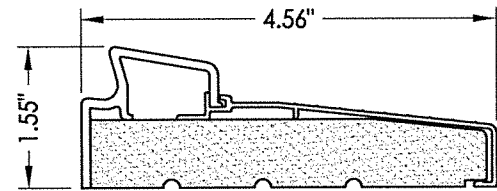
1 WOOD JAMB



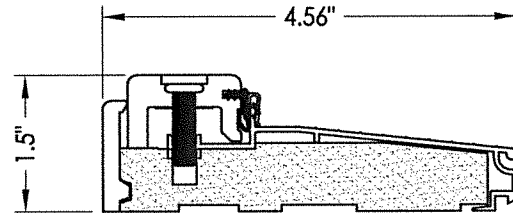
Documents Prepared By: Lyndon F. Schmidt, P.E.
TEXAS P.E. #104123

RW BUILDING CONSULTANTS, INC.
P.O. Box 230 Vairico FL 33595
Phone No.: 813.659.9197

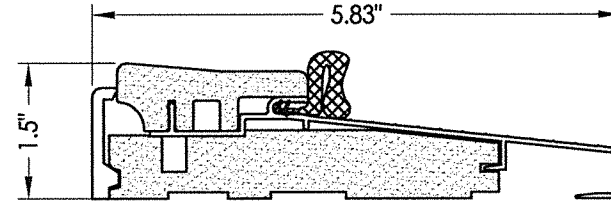
CERTIFICATE OF REGISTRATION # F-11852



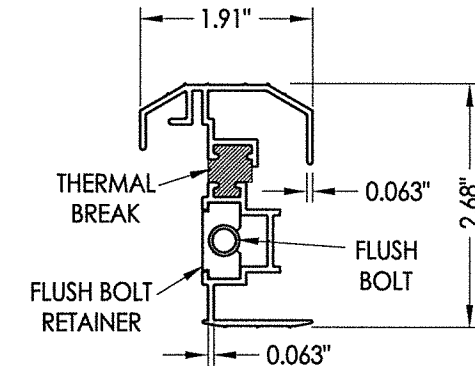
33 INSWING THRESHOLD
Inswing Basic Fixed Sill



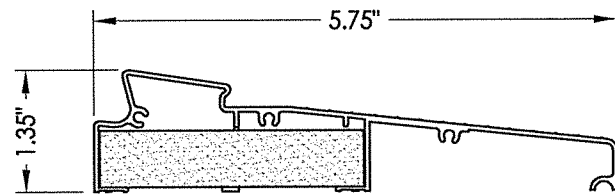
38 INSWING THRESHOLD
Inswing Composite Adjustable Sill



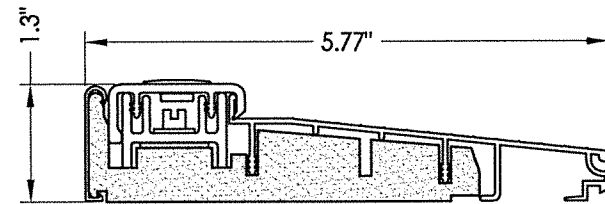
16 OUTSWING THRESHOLD
Composite Sill



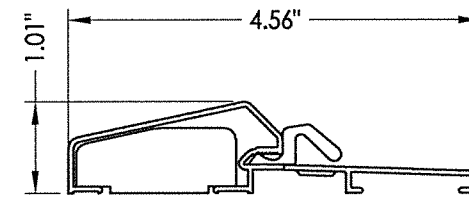
19 STANDARD ALUMINUM ASTRAGAL



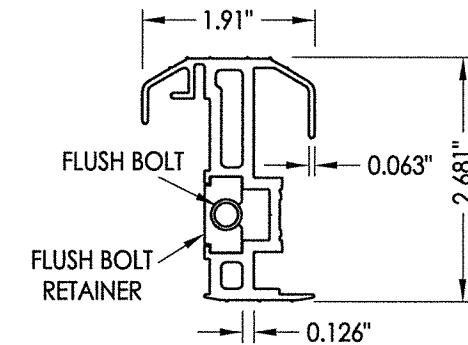
34 INSWING THRESHOLD
Inswing Moderate Climate Sill 1-3/8"



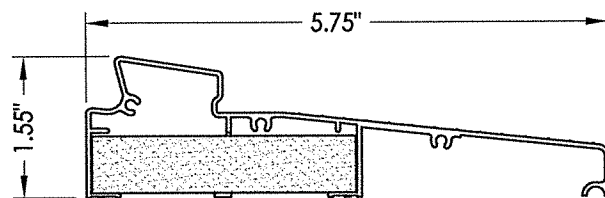
39 INSWING THRESHOLD
Inswing Basic Composite Adjustable Sill



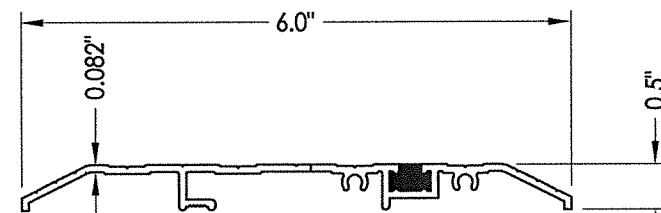
17 OUTSWING THRESHOLD
Composite / Aluminum Sill



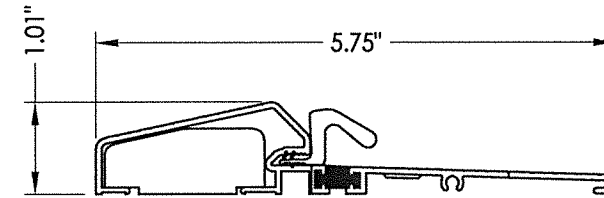
20 COASTAL ALUMINUM ASTRAGAL



35 INSWING THRESHOLD
Inswing Moderate Climate Sill

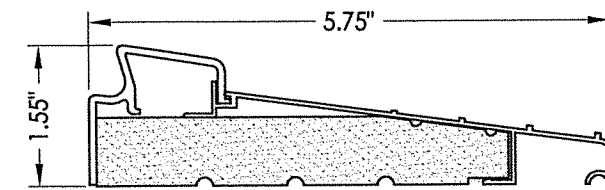


15 PUBLIC ACCESS THRESHOLD

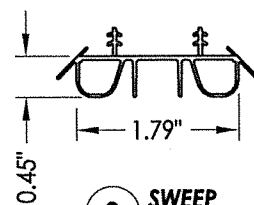


18 OUTSWING THRESHOLD
Composite / Aluminum Sill
(Thermal Break)

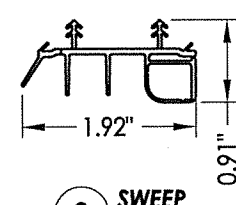
20 COASTAL ALUMINUM ASTRAGAL



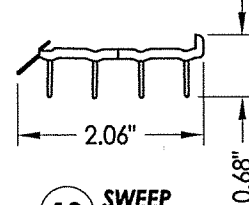
36 INSWING THRESHOLD
Inswing Basic Fixed 5-3/4" Sill



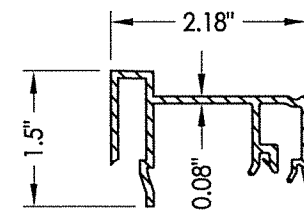
8 SWEEP



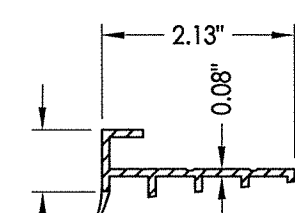
9 SWEEP



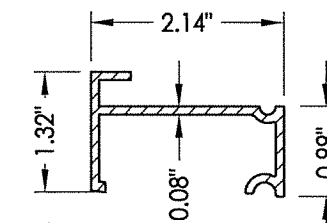
10 SWEEP



75 SIDELITE SPACER
Inswing



76 SIDELITE SPACER
Outswing



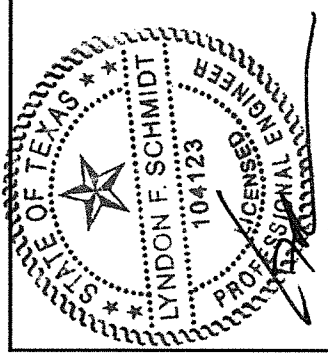
77 SIDELITE SPACER
Inswing
Moderate Climate Threshold

PRODUCT: THERMA-TRU FIBERGLASS DOOR		PART OR ASSEMBLY: COMPONENTS	
NO.	DATE	DESCRIPTION	BY
1	9/27/21	UPDATE TO 2018 IBC/IRC CODE	LFS
REVISIONS			
DATE: 11/27/17		SCALE: N.T.S.	
DWG. BY: JK		CHK. BY: LFS	
DRAWING NO.: TX-4763		SHEET 11 OF 12	

Z:\Clients\Therma Tru PERMANENT\B - Texas Dept of Ins\TDI - DR 946 - 68 & 8'0 Glazed Comp Edge Non-Impact (TX 4761 - 4770)\C - Drawings\TX-4761-63.dwg

BILL OF MATERIALS

ITEM #	DESCRIPTION	MATERIAL
A	2X FRAMING (SG >= 0.42)	WOOD
C	1/4" MAX. SHIM SPACE	-
D	1/4" PFH DeWALT OR ITW CONCRETE SCREW (1-3/4" MIN. EMBEDMENT)	STEEL
G	3/16" PFH DeWALT OR ITW CONCRETE SCREW (1-3/4" MIN. EMBEDMENT)	STEEL
K	#12 PFH WOOD SCREW (1-1/2" MIN. EMBEDMENT)	STEEL
L	#10 X 2-1/2" PFH WOOD SCREW (1.15" MIN. EMBEDMENT)	STEEL
1	JAMB (FINGER JOINT PINE)	WOOD
6	WEATHERSTRIP (MEDIUM REACH)	FOAM
7	WEATHERSTRIP (LONG REACH)	FOAM
8	SWEEP	VINYL
9	SWEEP (USE w/ MODERATE CLIMATE THRESHOLD)	VINYL
10	SWEEP (USE w/ PUBLIC ACCESS THRESHOLD)	VINYL
15	PUBLIC ACCESS THRESHOLD	ALUM
16	OUTSWING THRESHOLD	ALUM/COMP
17	OUTSWING THRESHOLD	ALUM/COMP
18	OUTSWING THRESHOLD	ALUM/COMP
19	STANDARD ALUMINUM ASTRAGAL	ALUM
20	COASTAL ALUMINUM ASTRAGAL	ALUM
23	#10 x 3/4" PFH WOOD SCREW	STEEL
24	#10 x 1" PFH WOOD SCREW	STEEL
25	#8 x 2-1/2" PFH WOOD SCREW	STEEL
26	#8 x 5/8" PFH WOOD SCREW	STEEL
27	LATCH STRIKE PLATE	STEEL
28	DEADBOLT SUB STRIKE PLATE	STEEL
29	4" X 4" HINGE	STEEL
30	LATCH & DEADBOLT STRIKE PLATE (TONGUE SYSTEM)	ALUM/COMP
31	MULTIPOINT STRIKE PLATE (TONGUE SYSTEM)	ALUM/COMP
32	INSWING THRESHOLD	ALUM/COMP
33	INSWING THRESHOLD	ALUM/COMP
34	INSWING THRESHOLD	ALUM/COMP
35	INSWING THRESHOLD	ALUM/COMP
36	INSWING THRESHOLD	ALUM/COMP
37	INSWING THRESHOLD	ALUM/COMP
38	INSWING THRESHOLD	ALUM/COMP
39	INSWING THRESHOLD	ALUM/COMP
40	DOOR PANEL (BOOK)	-
41	DOOR PANEL (HYBRID)	-
42	DOOR PANEL (U1)	-
50	SIDELITE	-
75	SIDELITE SPACER (INSWING)	PVC
76	SIDELITE SPACER (OUTSWING)	PVC
77	SIDELITE SPACER (INSWING) - MODERATE CLIMATE SILL	PVC
78	MULTIPOINT LOCK STRIKE PLATE @ HEAD	STEEL
79	MULTIPOINT LOCK STRIKE PLATE @ SILL	STEEL
80	ASTRAGAL STRIKE PLATE	STEEL



Documents Prepared By: Lyndon F. Schmidt, P.E.
TEXAS P.E. #104123

RW
BUILDING CONSULTANTS, INC.
P.O. Box 230 Valrico FL 33595
Phone No.: 813.659.9197

CERTIFICATE OF REGISTRATION # F-11852

PRODUCT: THERMA-TRU
FIBERGLASS DOOR

PART OR ASSEMBLY:
BILL OF MATERIALS

NO.	DATE	UPDATE TO 2018 IBC/IRC CODE	LFS	BY
1	9/27/21			

REVISIONS

CONCRETE ANCHOR NOTES:

1. Concrete anchor locations at the corners may be adjusted to maintain the min. edge distance to mortar joints.
2. Concrete anchor locations noted as "MAX. ON CENTER" must be adjusted to maintain the min. edge distance to mortar joints, additional concrete anchors may be required to ensure the "MAX. ON CENTER" dimension are not exceeded.
3. Concrete anchor table:

ANCHOR TYPE	ANCHOR SIZE	MIN. EMBEDMENT	MIN. CLEARANCE TO MASONRY EDGE	MIN. CLEARANCE TO ADJACENT ANCHOR
ITW TAPCON®	1/4"	1-3/4"	2"	4"
DeWALT ULTRACON®	1/4"	1-3/4"	1"	4"
ITW TAPCON®	3/16"	1-3/4"	3"	1-1/2"

WOOD SCREW INSTALLATION NOTES:

1. Maintain a minimum 5/8" edge distance, 1" end distance, & 1" o.c. spacing of wood screws to prevent the splitting of wood.

DATE: 11/27/17
SCALE: N.T.S.
DWG. BY: JK
CHK. BY: LFS
DRAWING NO.: TX-4763
SHEET 12 OF 12

© 2017 R.W. BUILDING CONSULTANTS INC.