

GENERAL NOTES AND SPECIFICATIONS:

1. SERIES LS20GA FLUSH COMMERCIAL STEEL OUTSWING DOOR SHOWN ON THIS PRODUCT EVALUATION DOCUMENT (P.E.D.) HAS BEEN VERIFIED FOR CODE COMPLIANCE IN ACCORDANCE WITH THE **2018** EDITION OF THE INTERNATIONAL BUILDING CODE, (IBC).

DESIGN WIND LOADS SHALL BE DETERMINED AS PER SECTION **1609** OF THE INTERNATIONAL BUILDING CODE, FOR A BASIC WIND SPEED AS REQUIRED BY THE JURISDICTION WHERE PRODUCT WILL BE INSTALLED, AND FOR A DIRECTIONALITY FACTOR $K_d = 0.85$, IN ACCORDANCE WITH ASCE **7-16** STANDARD, AND SHALL NOT EXCEED THE DESIGN PRESSURE RATING INDICATED ON SHEET 2.

IN ORDER TO VERIFY THAT ANCHORS ON THIS P.E.D., AS TESTED, WERE NOT OVERSTRESSED, A 33% INCREASE IN ALLOWABLE STRESS FOR WIND LOADS WAS NOT USED IN THEIR ANALYSIS. FASTENERS SPACING TO WOOD HAS BEEN DETERMINED IN ACCORDANCE WITH N.D.S. **2018**.

THIS DOOR'S ADEQUACY FOR IMPACT AND CYCLIC RESISTANCE HAS BEEN VERIFIED IN ACCORDANCE WITH SECTION **1609.2** OF THE ABOVE MENTIONED CODE AS PER FLORIDA HIGH VELOCITY HURRICANE ZONE PROTOCOLS TAS-201, TAS-202, TAS-203 AS PER FENESTRATION TESTING LABORATORY, INC. REPORT # 8974, AND AS PER SUBMITTED STRUCTURAL CALCULATIONS, PERFORMED AS PER SECTION **1604** OF THE ABOVE MENTIONED BUILDING CODE.

2. ALL COMPONENTS SHALL BE AS SPECIFIED ON APPLICABLE DETAIL SHEETS AND AT BILL OF MATERIALS (SHEET 5) OF THIS DRAWING.

3. COMPLIANCE OF EGRESS / ESCAPE REQUIREMENTS OF THESE DOORS PER ABOVE MENTIONED BUILDING CODE. TO BE DETERMINED BY BUILDING OFFICIALS ON A CASE-BY-CASE BASIS.

4. ALL SCREWS TO BE STAINLESS STEEL 304 OR 316 AISI SERIES AND MEET ASTM A167, OR HOT DIPPED GALVANIZED (AFTER FABRICATION) CARBON STEEL AS PER ASTM A123 OR ASTM A153, OR HOT DIPPED GALVANIZED OR GALVANNEALED (PRIOR TO FABRICATION) AND MEET ASTM A653 WITH 50 ksi YIELD STRENGTH AND 90 ksi TENSILE STRENGTH.

BOLTS TO BE ASTM A-307 GALVANIZED STEEL OR AISI 304 SERIES STAINLESS STEEL, WITH 35 Ksi MINIMUM YIELD STRENGTH.

5. ALL WELDING TO CONFORM W/AMERICAN WELDING SOCIETY A.W.S. D.1.3 AND D-19.0 REGULATIONS WITH E60XX ELECTRODES, FOR GALVANNEALED MATERIAL, AND W/AMERICAN WELDING SOCIETY A.W.S. D.1.6 REGULATIONS W/ E-308 ELECTRODES (FU=80k.s.i.) FOR STAINLESS STEEL MATERIAL

6. ALL ANCHORS FOR DOOR FRAME CONNECTIONS TO EXISTING STRUCTURE SHALL BE AS SPECIFIED ON SHEET 13 OF THIS DRAWING. MAXIMUM ANCHORS SPACINGS SHALL BE AS PER ELEVATIONS ON SHEET 3 OF THIS DRAWING.

7. PROVIDE MAX. LOAD BEARING SHIM SPACE AS INDICATED ON SHEET 13.

8. THIS DOOR WILL NOT REQUIRE A HURRICANE PROTECTION DEVICE. DOOR MEETS IMPACT RESISTANCE FOR TYPE "D" MISSILE FOR BASIC PROTECTION.

9. THESE DOOR ASSEMBLIES ARE APPROVED FOR WATER AND AIR INFILTRATION AS PER TESTING INDICATED ON GENERAL NOTE 1, AND SHALL BE LIMITED TO DESIGN PRESSURE RATINGS INDICATED ON SHEET 2.

10. PROVIDE SPECIFIED SEALANT AT ALL DOOR FRAME & THRESHOLD COMPONENTS INDICATED ON THIS DRAWING.

11. ALL EXISTING WALLS (STRUCTURE) WHERE DOOR IS TO BE INSTALLED MUST BE BUILT IN ACCORDANCE WITH THE INTERNATIONAL BUILDING CODE AND SHALL BE DESIGNED TO SUSTAIN THE SUPERIMPOSED LOADS TRANSFERRED BY THE DOOR SYSTEM.

12. ALL ALUMINUM EXTRUSIONS IN CONTACT WITH DISSIMILAR MATERIALS SHALL COMPLY WITH SECTION III-6 OF THE ALUMINUM DESIGN MANUAL 2015 EDITION.

13. PERMIT HOLDER SHALL VERIFY THE ADEQUACY OF THE EXISTING STRUCTURE TO SUSTAIN THE SUPERIMPOSED LOADS TRANSFERRED BY THESE DOORS.

14. (a) THIS P.E.D. PREPARED BY THIS ENGINEER IS GENERIC AND DOES NOT PROVIDE INFORMATION FOR A SITE SPECIFIC PROJECT; i.e. WHERE THE SITE CONDITIONS DEVIATE FROM THE P.E.D.

(b) CONTRACTOR TO BE RESPONSIBLE FOR THE SELECTION, PURCHASE AND INSTALLATION INCLUDING LIFE SAFETY OF THIS PRODUCT, BASED ON THIS P.E.D., PROVIDED HE/SHE DOES NOT DEVIATE FROM THE CONDITIONS DETAILED ON THIS DOCUMENT. CONSTRUCTION SAFETY AT SITE IS THE CONTRACTOR'S RESPONSIBILITY.

(c) THIS P.E.D. WILL BE CONSIDERED INVALID IF ALTERED BY ANY MEANS.

(d) SITE SPECIFIC PROJECTS SHALL BE PREPARED BY A PROFESSIONAL ENGINEER OR ARCHITECT WHICH WILL BECOME THE ENGINEER OF RECORD (E.O.R.) FOR THE PROJECT AND WHO WILL BE RESPONSIBLE FOR THE PROPER USE OF THE P.E.D.

(e) ORIGINAL P.E.D. SHALL BEAR THE DATE AND ORIGINAL SEAL AND SIGNATURE OF THE PROFESSIONAL ENGINEER OF RECORD THAT PREPARED IT.

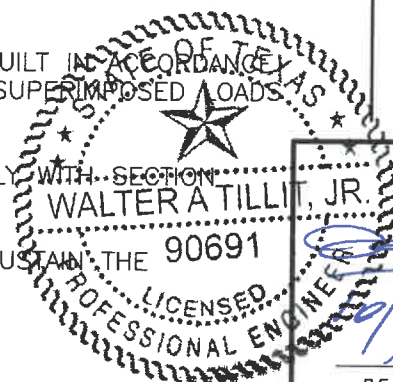
15. PRODUCT MANUFACTURER'S LABEL SHALL BE LOCATED ON A READILY VISIBLE LOCATION AT PRODUCT IN ACCORDANCE WITH TEXAS DEPARTMENT OF INSURANCE REQUIREMENTS. ONE LABEL SHALL BE PLACED FOR EVERY OPENING.

16. EXPANDED POLYSTYRENE CORE SHALL BE RIGID BOARD TYPE 1 PCF CONFORMING TO ASTM C578 BY DYPLAST PRODUCTS LLC, W/ CURRENT MIAMI DADE COUNTY PRODUCT CONTROL EVALUATION (NOA).

SHEETS CONTENT:

- SHEET #1 INDEX, COVER SHEET & GENERAL NOTES.
- SHEET #2 ASSEMBLY ELEVATIONS.
- SHEET #3 ANCHOR ELEVATIONS.
- SHEET #4 OPTIONAL EMBOSSED DOOR SLAB.
- SHEET #5 BILL OF MATERIALS.
- SHEETS #6-#8 COMPONENTS.
- SHEET #9 VERTICAL SECTIONS.
- SHEETS #10-12 HORIZONTAL SECTIONS AT HARDWARE.
- SHEET #13 ANCHOR SECTIONS.
- SHEET #14 DOOR SURFACE CLOSER REINFORCEMENT AND END CHANNEL ASSEMBLY DETAIL + CORNER DETAILS.

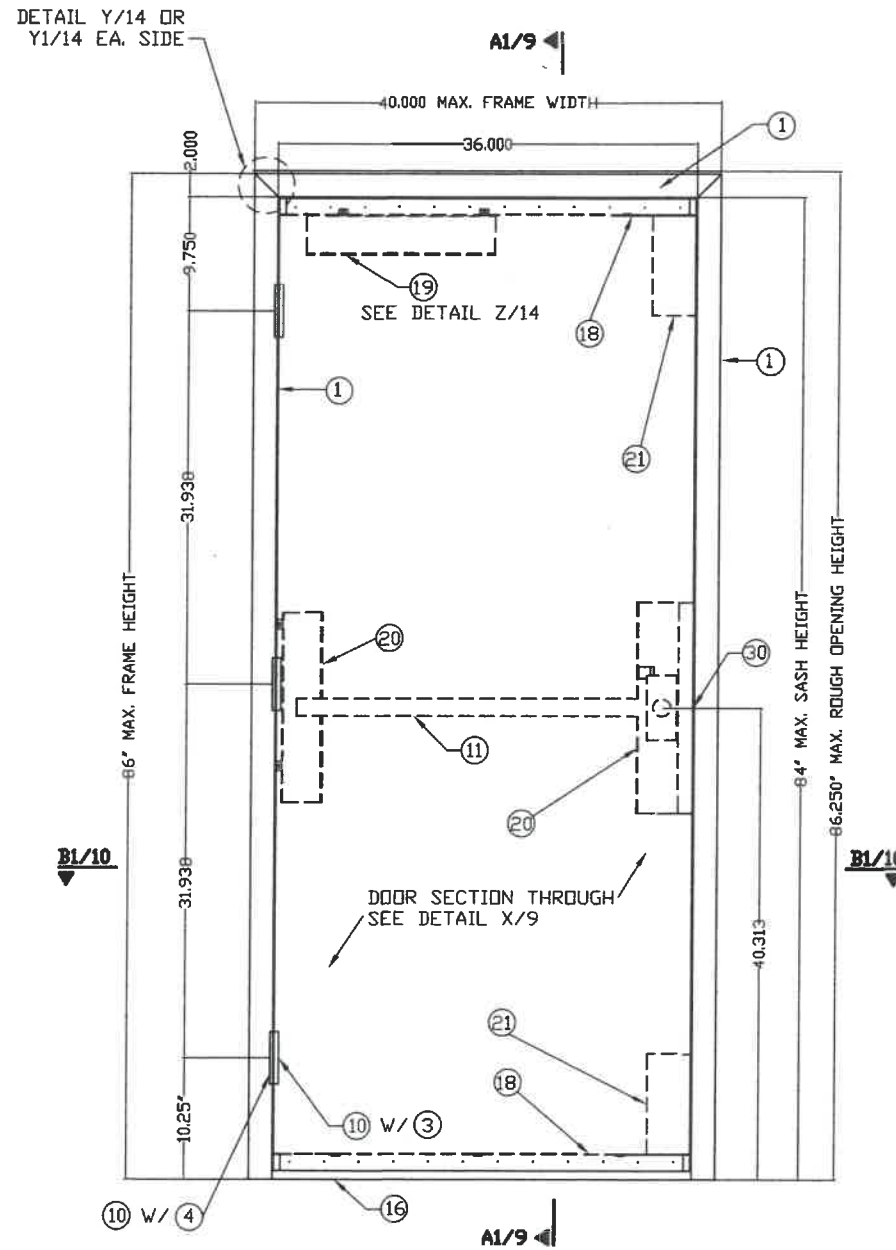
THIS DRAWING SHALL ONLY BE USED TO OBTAIN PERMITS UNDER THE TEXAS DEPARTMENT OF INSURANCE JURISDICTION



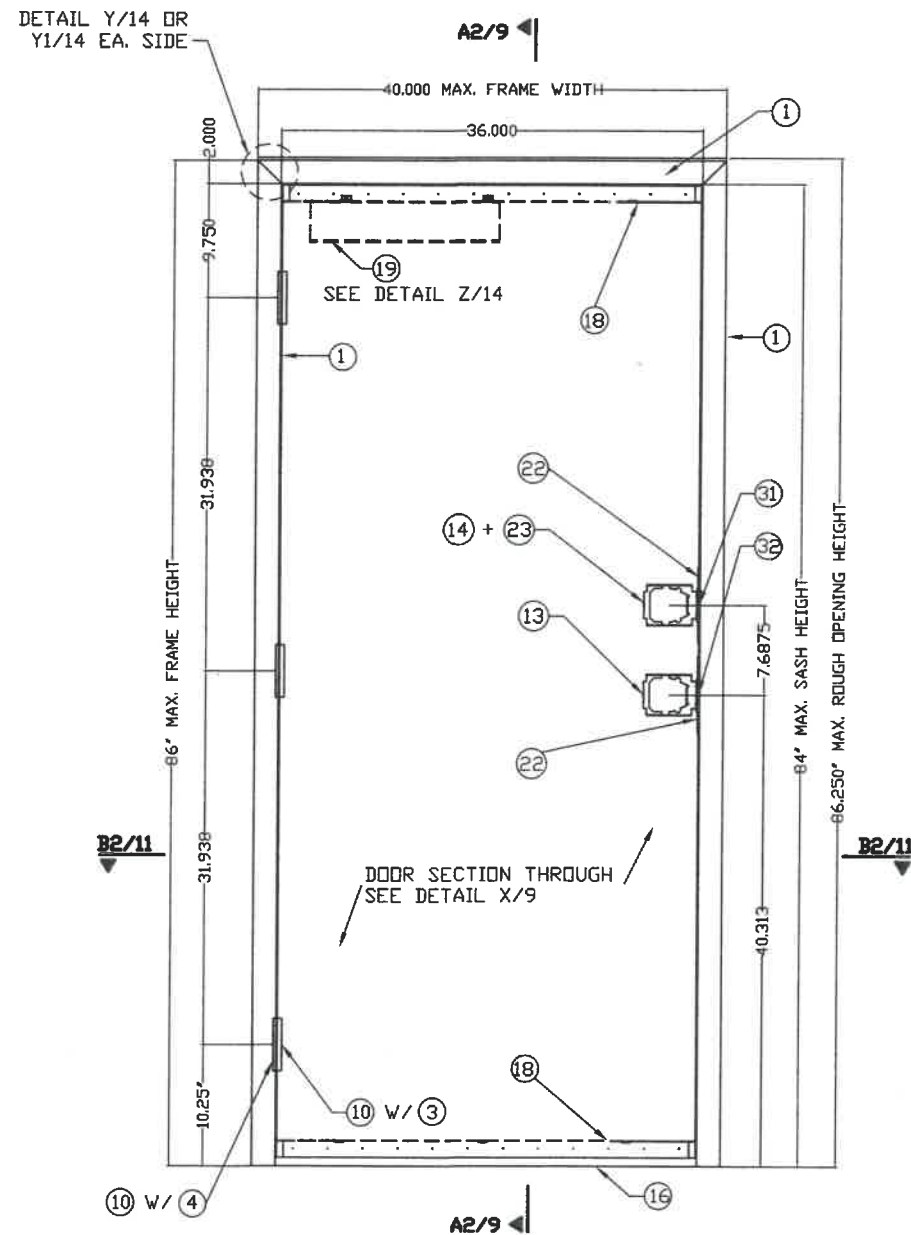
WALTER A. TILLIT, JR.
 90691
 LICENSED PROFESSIONAL ENGINEER
 P.E. SEAL/SIGNATURE/DATE

WALTER A. TILLIT Jr P.E.
 PROFESSIONAL ENGINEER
 6355 N.W 36 STREET, STE. 305
 VIRGINIA GARDENS, FL 33166
 PHONE(305) 871-1530 FAX (305) 871-1531
 TEXAS LIC. # 90691
 FIRM REGISTRATION # F-13790

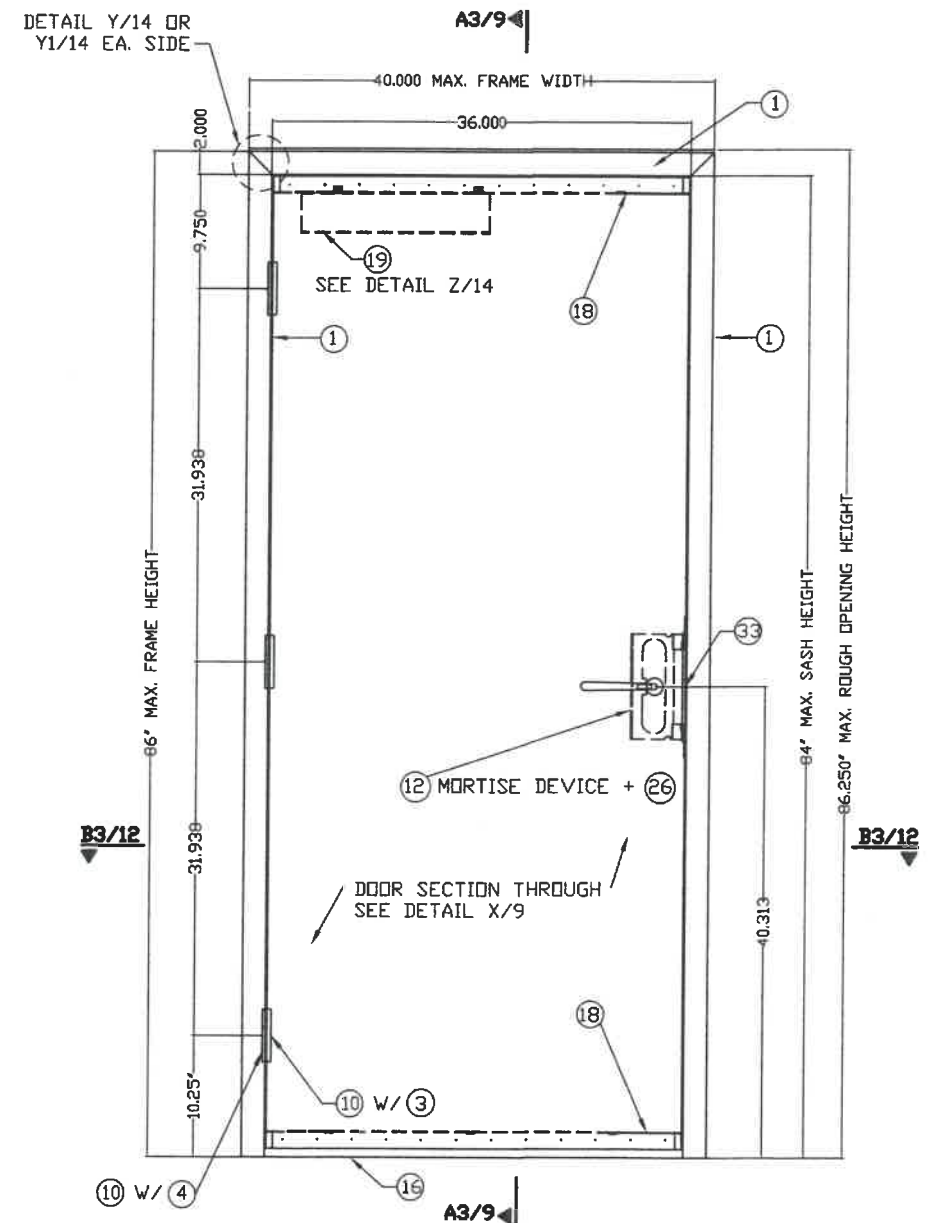
TEXAS DEPARTMENT OF INSURANCE - 2018					
SERIES LS20GA FLUSH COMMERCIAL STEEL OUTSWING DOOR W/SERIES "AS" 18GA STEEL FRAME					DRAWN BY: M.P.
DAYBAR INDUSTRIES LTD					9/29/2021 DATE
50 WEST DRIVE, BRAMPTON, ON CANADA, L6T 2J4 TEL: 905 625-8000 FAX: 905 625-4204					21-123 DRAWING No
REV. No	DESCRIPTION	DATE	REV. No	DESCRIPTION	DATE
1	OLD 17-054	9/29/21	3	-	-
2	-	-	4	-	-
					SHEET 1 OF 14



EXTERIOR ELEVATION (OUTSWING) DOOR
VON DUPRIN RIM EXIT

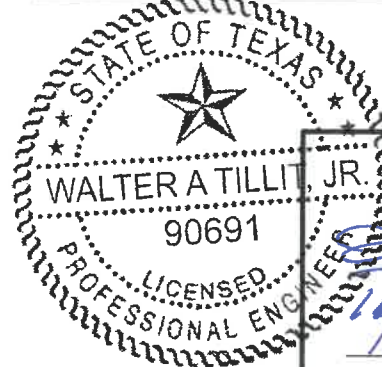


EXTERIOR ELEVATION (OUTSWING) DOOR
CYLINDRICAL LOCK + DEAD BOLT



EXTERIOR ELEVATION (OUTSWING) DOOR
MORTISE DEVICE

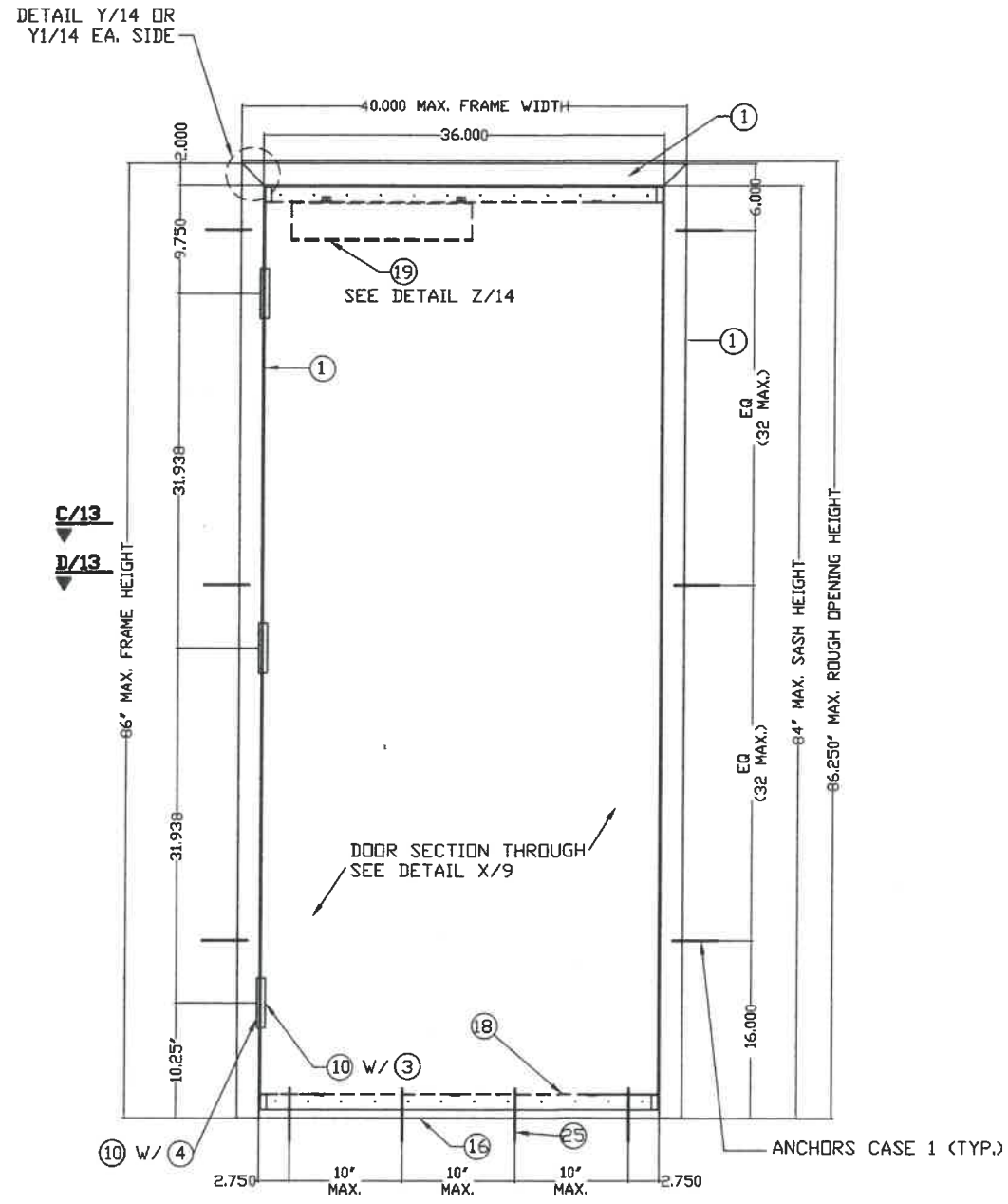
DESIGN LOAD
+75.0 psf, -75.0 psf



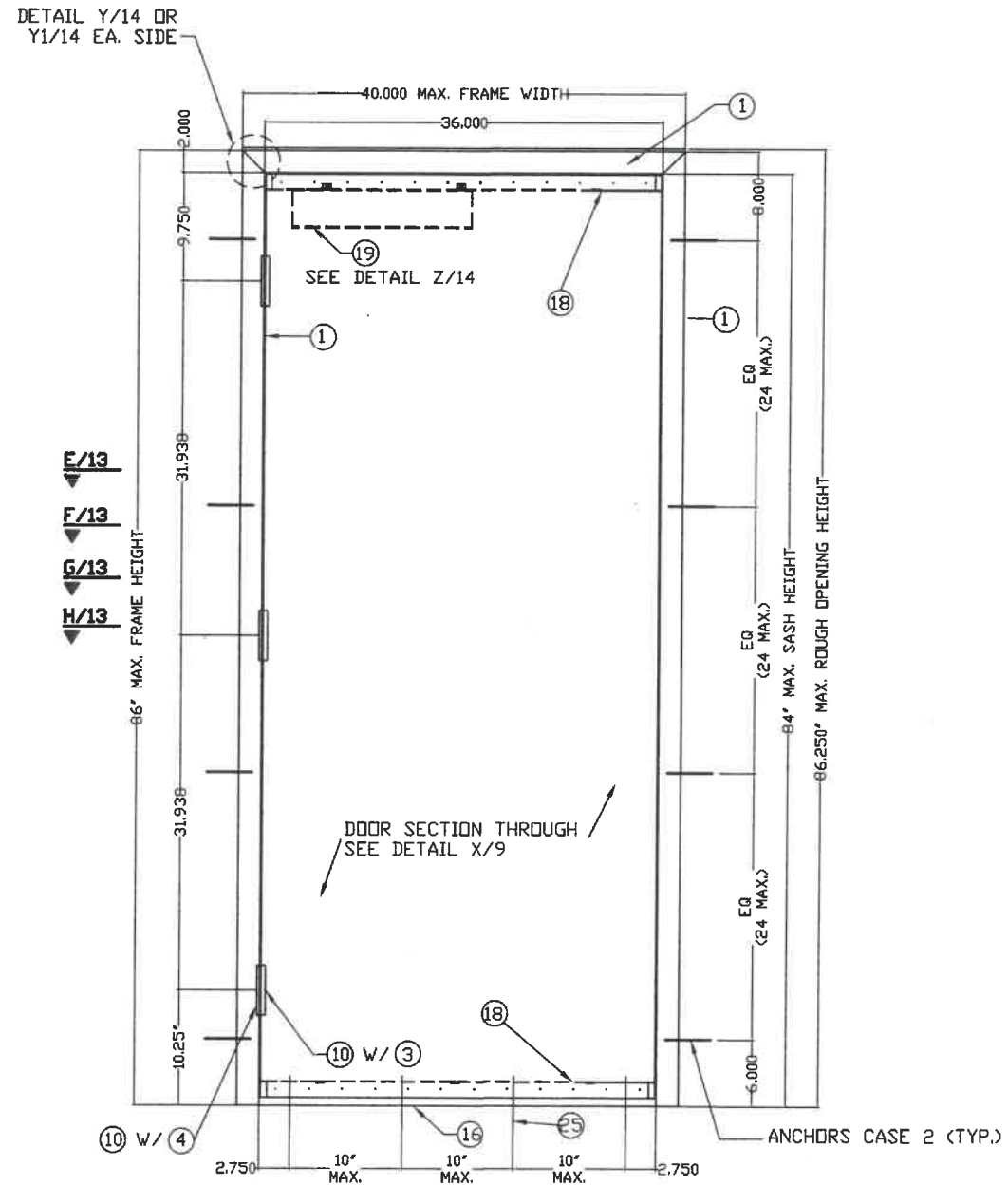
Walter A. Tillit, Jr.
P.E. SEAL/SIGNATURE/DATE

WALTER A. TILLIT Jr P.E.
PROFESSIONAL ENGINEER
6355 N.W 36 STREET, STE. 305
VIRGINIA GARDENS, FL 33166
PHONE(305) 871-1530 FAX (305) 871-1531
TEXAS LIC. # 90691
FIRM REGISTRATION # F-13790

TEXAS DEPARTMENT OF INSURANCE - 2018					
SERIES LS20GA FLUSH COMMERCIAL STEEL OUTSWING DOOR W/SERIES "AS" 18GA STEEL FRAME				DRAWN BY: M.P.	
DAYBAR INDUSTRIES LTD				9/29/2021 DATE	
50 WEST DRIVE, BRAMPTON, ON CANADA, L6T 2J4 TEL: 905 625-8000 FAX: 905 625-4204				21-123 DRAWING No	
REV. No	DESCRIPTION	DATE	REV. No	DESCRIPTION	DATE
1	OLD 17-054	9/29/21	3	-	-
2	-	-	4	-	-

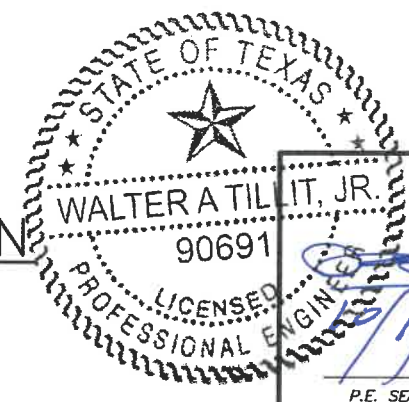


EXTERIOR ELEVATION (OUTSWING) DOOR
CASE 1 (SEE SHEET 13)



EXTERIOR ELEVATION (OUTSWING) DOOR
CASE 2 (SEE SHEET 13)

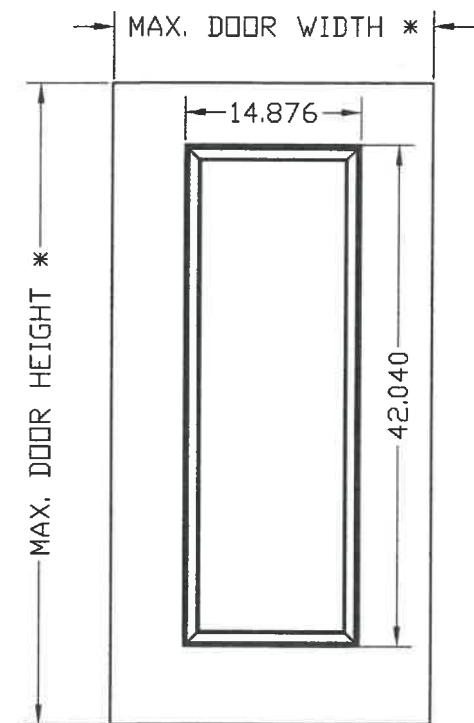
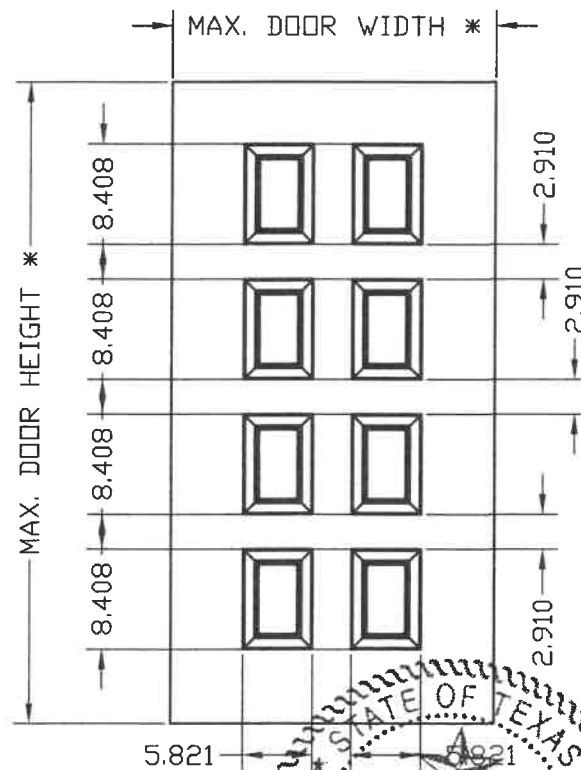
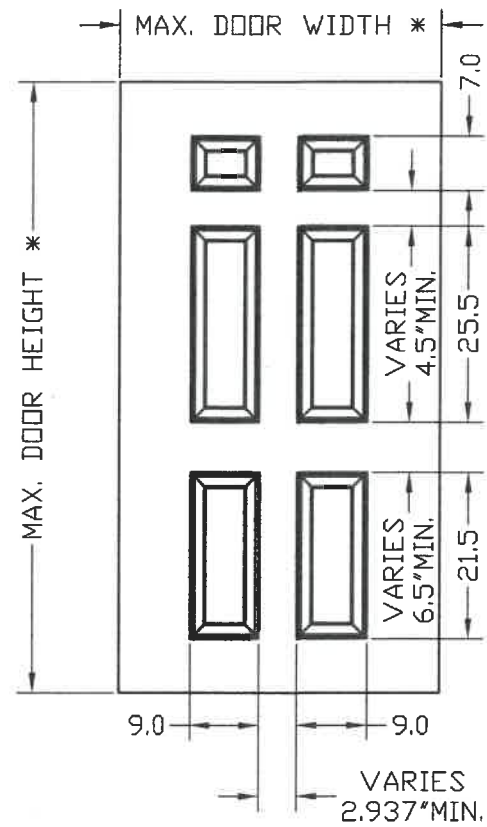
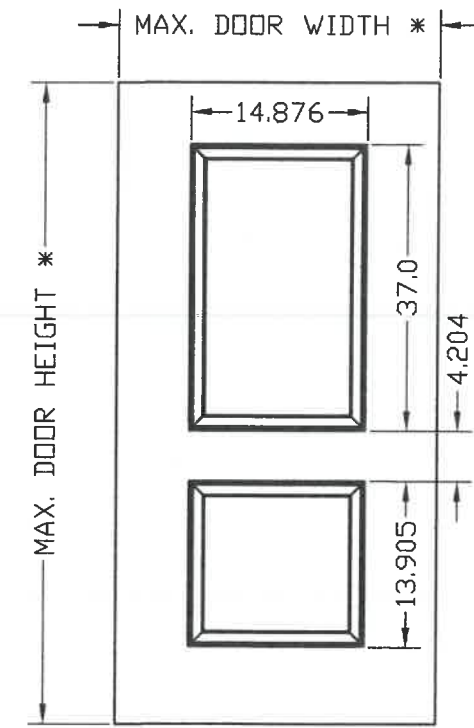
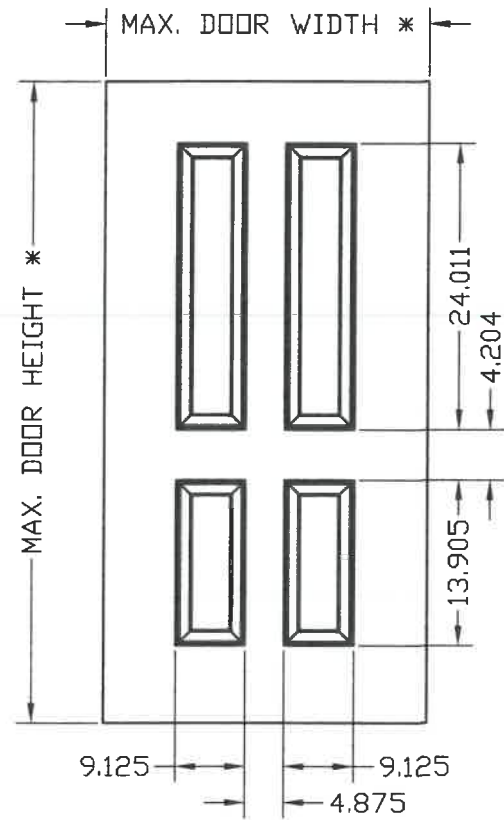
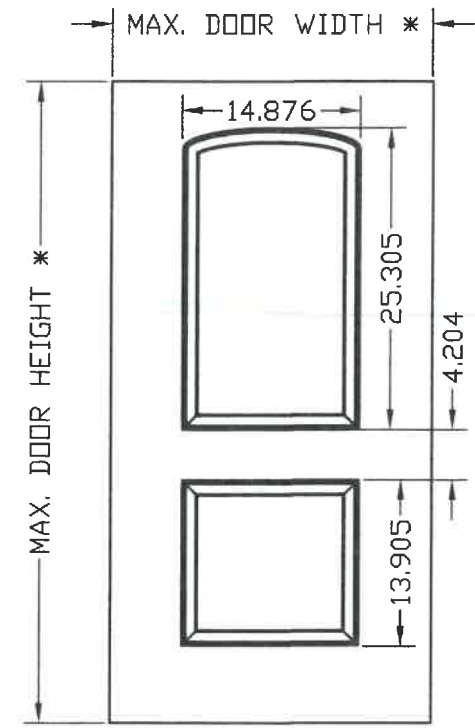
ANCHORAGE INSTALLATION
DETAILS AT JAMBS



[Signature]
P.E. SEAL/SIGNATURE/DATE

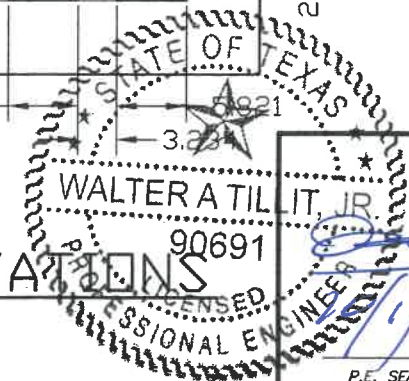
WALTER A. TILLIT Jr P.E.
PROFESSIONAL ENGINEER
6355 N.W 36 STREET, STE. 305
VIRGINIA GARDENS, FL 33166
PHONE(305) 871-1530 FAX (305) 871-1531
TEXAS LIC. # 90691
FIRM REGISTRATION # F-13790

TEXAS DEPARTMENT OF INSURANCE - 2018					
SERIES LS20GA FLUSH COMMERCIAL STEEL OUTSWING DOOR W/SERIES "AS" 18GA STEEL FRAME				DRAWN BY: M.P.	
DAYBAR INDUSTRIES LTD				9/29/2021 DATE	
50 WEST DRIVE, BRAMPTON, ON CANADA, L7J 2J4 TEL: 905 625-8000 FAX: 905 625-4204				21-123 DRAWING No	
REV. No	DESCRIPTION	DATE	REV. No	DESCRIPTION	DATE
1	OLD 17-054	9/29/21	3	-	-
2	-	-	4	-	-



* SEE SHEET 2

OPTIONAL EMBOSSED DOOR ELEVATIONS



Walter A. Tillit, Jr.
P.E. SEAL/SIGNATURE/DATE

WALTER A. TILLIT Jr P.E.
PROFESSIONAL ENGINEER
6355 N.W 36 STREET, STE. 305
VIRGINIA GARDENS, FL 33166
PHONE(305) 871-1530 FAX (305) 871-1531
TEXAS LIC. # 90691
FIRM REGISTRATION # F-13790

TEXAS DEPARTMENT OF INSURANCE - 2018

SERIES LS20GA FLUSH COMMERCIAL
STEEL OUTSWING DOOR W/SERIES "AS"
18GA STEEL FRAME

DRAWN BY:
M.P.

DAYBAR INDUSTRIES LTD

9/29/2021
DATE

50 WEST DRIVE, BRAMPTON,
ON CANADA, L6T 2J4
TEL: 905 625-8000 FAX: 905 625-4204

21-123
DRAWING No

REV. No	DESCRIPTION	DATE	REV. No	DESCRIPTION	DATE
1	OLD 17-054	9/29/21	3	-	-
2	-	-	4	-	-

BILL OF MATERIALS OUTSWING DOOR:

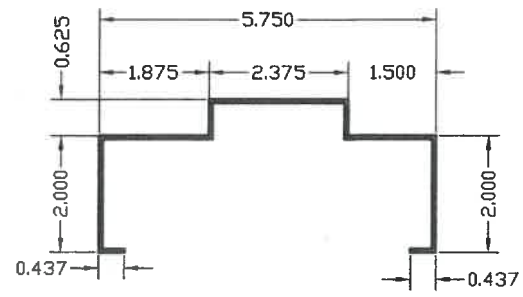
ITEM	DESCRIPTION	BASIC DIMENSIONS, MATERIAL OR ADDITIONAL DETAILS
①, ①A	18 GAUGE WELDED FRAME	AS 5 3/4" JAMB DEPTH X 2" FACE X .042" MIN GALVANNEAL FOR ① (Fu=52Ksi, Fy=45Ksi) OR STAINLESS STEEL (Fu=94.9 Ksi, Fy=54.5 Ksi) FOR ①A, OF SAME DIMENSIONS
②	20 GAUGE FLUSH DOOR COMMERCIAL STEEL	1 3/4" THICK X (.032 MIN) GALVANNEAL (Fu=60Ksi, Fy=45Ksi); C/W PAPER HONEY COMB OR NDA APPROVED STYRENE CORE
③	HINGE REINFORCINGS (DOOR)	1 1/4" X 10" X 10 GAUGE GALVANNEAL (.134 MIN)
④	HINGE REINFORCINGS (FRAME)	1 1/2" X 8 3/4" X 10 GAUGE GALVANNEAL (.134 MIN)
⑤	STRIKE REINFORCINGS (FRAME)	1 3/8" X 7 5/16" X 14 GAUGE GALVANNEAL (.072 MIN)
⑥	WIRE MASONRY FRAME ANCHOR	9 1/2" LONG X 10 GAUGE (.134 MIN) Fu=95.9 Ksi Fy=40.2 Ksi
⑦	2 PIECE SNAP-IN STUD ANCHOR	1 13/16" X 4 1/8" X 20 GAUGE GALVANNEAL (.032 MIN), SNAPPED TO ACHIEVE 5 5/8" TOTAL DEPTH
⑧	EMA ANCHOR BOLTS	3/8" X 5" STEEL UNICAN-SLEEVE ANCHOR, 2 1/4" EMBEDMENT & 3" MIN. E.D.
8A	EMA BUTTERFLY ANCHOR (PART #PT1-008)	18 GAUGE (.042") STEEL SATIN COAT
⑨	LAG SCREW	3/8"ØX6" LAG SCREW
⑩	HINGES-HAGER BB1191, BB1279, BB1168HD OR STANLEY FBB179, FBB168	MIN. 4" TO 4.5" X 4.5" STANDARD WEIGHT (.134 THICK), STEEL, ATTACHED TO FRAME W/ (4) 12-24 x 1/2" FHMS
⑪	RIM EXIT: VON DUPRIM 98/99 SERIES	N/A
⑫	MORTISE DEVICE: SCHLAGE L9000 SERIES	N/A
⑬	CYLINDRICAL LOCK: SCHLAGE D SERIES	N/A
⑭	DEAD BOLT: SCHLAGE B SERIES	N/A
⑮	WEATHER STRIP: NATIONAL GUARD PRODUCTS #120NA	SECURED WITH DOUBLE ROW OF #6 X 1/2" SMS SCREWS @ 1" FROM EA. END & BALANCE @ 4" O.C.
⑯	THRESHOLD: NATIONAL GUARD PRODUCTS #950NA	EXTRUDED ALUMINUM 6063-T6, 0.078" THK. W/ NEOPRENE BULB
⑰	CAULKING: GE SILICONE II	N/A
⑱	DOOR END CHANNEL REINFORCEMENT	16 GAGE GALVANNEAL STEEL
⑲	DOOR SURFACE CLOSER REINFORCEMENT	14 GAGE (.072" MIN.) x 3 1/2" x 1.6875 x 16.250" LONG. GALVANNEAL.
⑳	RP REINFORCING	14 GAGE (.072" MIN.) GALVANNEAL
㉑	RIM PANIC SURFACE BOLT REINFORCING	14 GAGE (.072" MIN.) GALVANNEAL
㉒	#161 LOCK EDGE REINFORCING	16 GAGE (.051" MIN.)
㉓	DEAD LOCK STRIKE TAB	14 GAGE (.072" MIN.) GALVANNEAL, ATTACHED TO STRIKE JAMB W/(3) 1/8"Ø PROJECTION WELDS
㉔	THRESHOLD ANCHOR	1/4"Ø ULTRACONS BY ELCO CONSTRUCTION PRODUCTS , 1 3/4" MIN. EMBEDMENT & 3" MIN. E.D @ f'c=3ksi CONCRETE SILL
㉕	MORTISE LOCK REINFORCEMENT	ANSI #A115.1 #86, 0.072"MIN.
㉖	Z ANCHOR	18 GAGE (.042") GALVANNEAL, W/ Fy= 33Ksi, Fu= 44Ksi
㉗	T STRAP ANCHOR DAYBAR # PT1-001A	18 GAGE (.042") GALVANNEAL, W/ Fy= 33Ksi, Fu= 44Ksi
㉘	STRIKE FOR RIM EXIT DEVICE ⑪	0.125" THICK, STEEL, PAINTED FINISH (SEE SHEET 8A FOR SIZES)
㉙	STRIKE FOR DEAD BOLT ⑭	0.095" THICK, STEEL, NICKEL FINISH (SEE SHEET 8A FOR SIZES)
㉚	STRIKE FOR CYLINDRICAL LOCK ⑬	0.095" THICK, STEEL NICKEL FINISH (SEE SHEET 8A FOR SIZES)
㉛	STRIKE FOR MORTISE LOCK ⑫	0.095" THICK, STEEL NICKEL FINISH (SEE SHEET 8A FOR SIZES)



P.E. SEAL/SIGNATURE/DATE

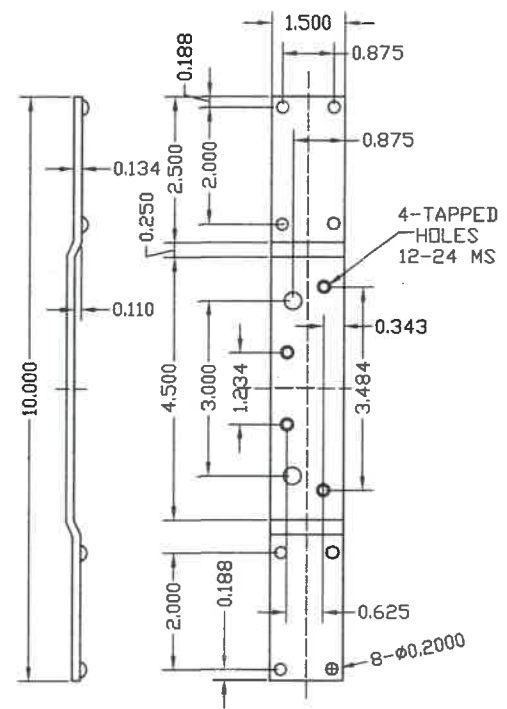
WALTER A. TILLIT Jr P.E.
 PROFESSIONAL ENGINEER
 6355 N.W 36 STREET, STE. 305
 VIRGINIA GARDENS, FL 33166
 PHONE(305) 871-1530 FAX (305) 871-1531
 TEXAS LIC. # 90691
 FIRM REGISTRATION # F-13790

TEXAS DEPARTMENT OF INSURANCE - 2018					
SERIES LS20GA FLUSH COMMERCIAL STEEL OUTSWING DOOR W/SERIES "AS" 18GA STEEL FRAME				DRAWN BY: M.P.	
DAYBAR INDUSTRIES LTD 50 WEST DRIVE, BRAMPTON, ON CANADA, L6T 2J4 TEL: 905 625-8000 FAX: 905 625-4204				9/29/2021 DATE	
21-123 DRAWING No				SHEET 5 OF 14	
REV. No	DESCRIPTION	DATE	REV. No	DESCRIPTION	DATE
1	OLD 17-054	9/29/21	3	-	-
2	-	-	4	-	-

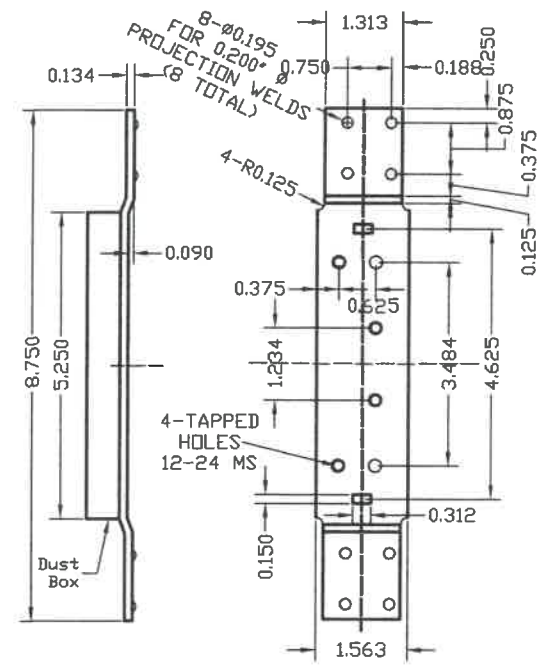


① AS 5 3/4" TYPICAL SECTION THROUGH
 MATERIAL:
 GAUGE 18 (0.042) MINIMUM GALVANNEAL

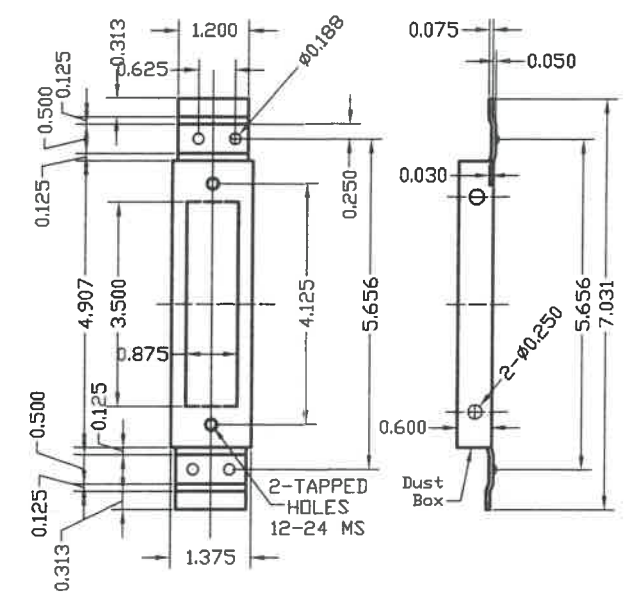
①A AS 5 3/4" TYPICAL SECTION THROUGH
 MATERIAL:
 GAUGE 18 (0.042) MINIMUM STAINLESS STEEL



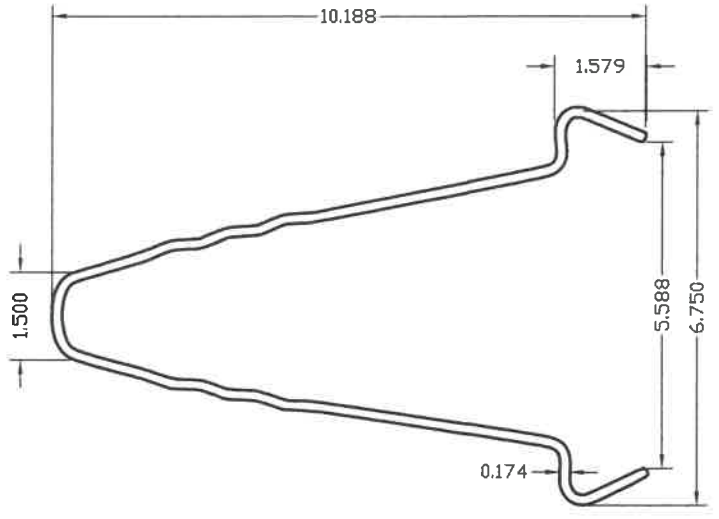
③ DOOR HINGE REINFORCING
 MATERIAL:
 GAUGE 10 (0.134) MINIMUM GALVANNEAL



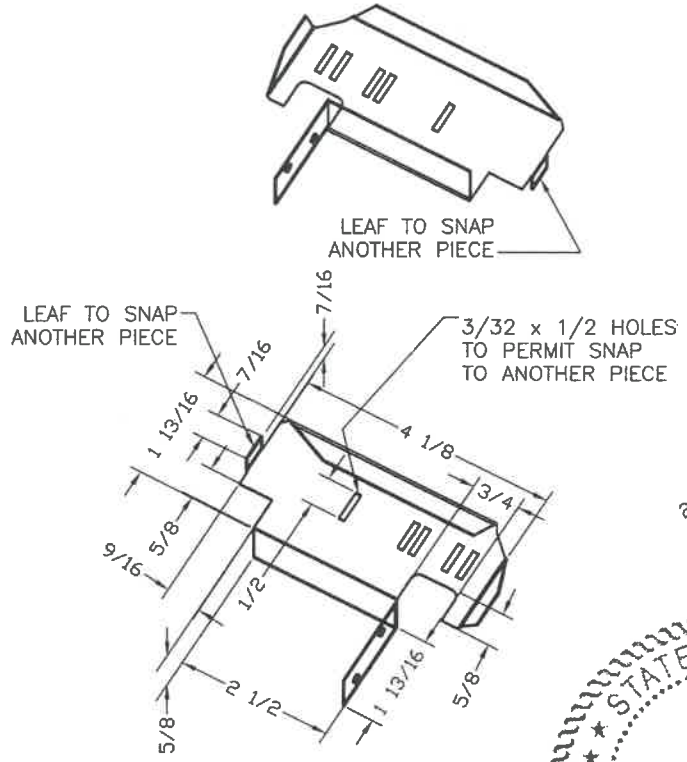
④ 4 1/2" FRAME HINGE REINFORCING
 MATERIAL:
 GAUGE 10 (0.134) MINIMUM GALVANNEAL



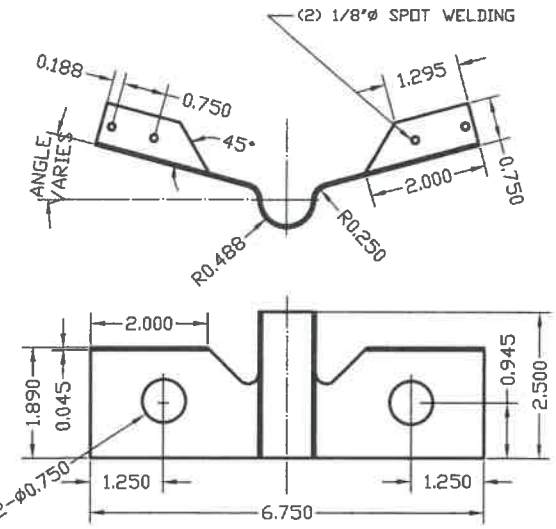
⑤ 4 7/8" STRIKE REINFORCEMENT FOR FRAME
 MATERIAL:
 GAUGE 12 (0.072) MINIMUM GALVANNEAL



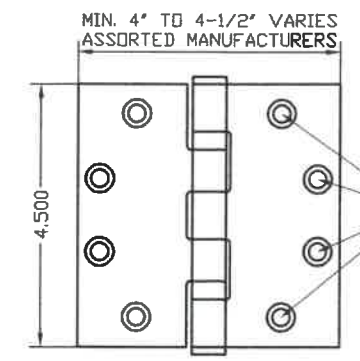
⑥ WIRE ANCHOR
 STEEL WIRE ANCHORS (0.134" DIA, 10 GAGE, 18 5/8" EMBEDMENT LENGTH) IN HORIZ.



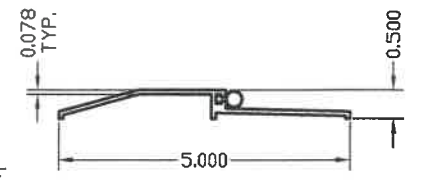
⑦ 2 PIECE SNAP-IN STUD ANCHOR
 CLIPIN STUD ANCHOR MATERIAL: GAUGE 20 (0.032) ASTM A-653, GALVANNEALED STEEL.



⑧A EMA BUTTERFLY ANCHOR (PART #PT1-008)
 MATERIAL: 18 GA (0.042") SATIN COAT



⑩ HINGE-HAGER
 MATERIAL: 0.134" STEEL, NICKEL FINISH

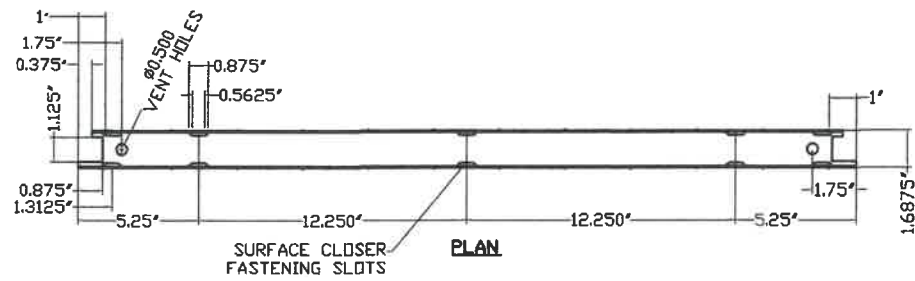
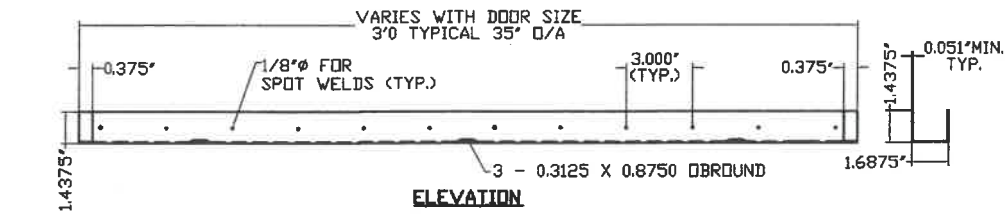


⑬ EXTRUDED ALUMINUM THRESHOLD NGP #950NA W/ NEOPRENE BULB

STATE OF TEXAS
 WALTER A. TILLIT JR.
 90691
 LICENSED PROFESSIONAL ENGINEER
 P.E. SEAL/SIGNATURE/DATE

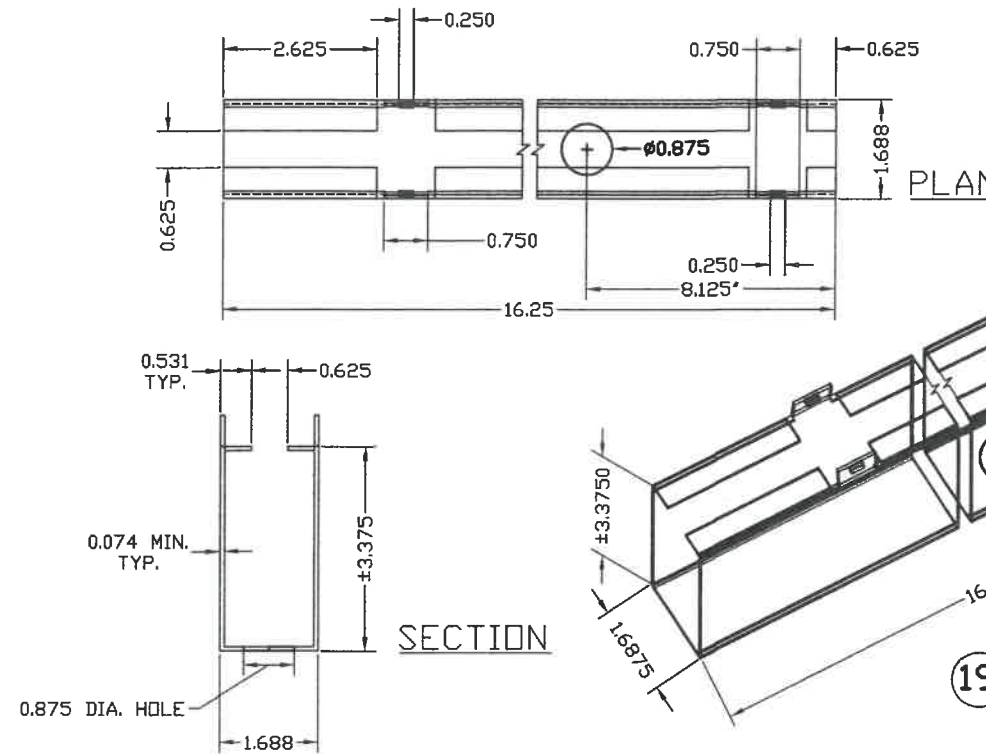
WALTER A. TILLIT Jr P.E.
 PROFESSIONAL ENGINEER
 6355 N.W 36 STREET, STE. 305
 VIRGINIA GARDENS, FL 33166
 PHONE(305) 871-1530 FAX (305) 871-1531
 TEXAS LIC. # 90691
 FIRM REGISTRATION # F-13790

TEXAS DEPARTMENT OF INSURANCE - 2018					
SERIES LS20GA FLUSH COMMERCIAL STEEL OUTSWING DOOR W/SERIES "AS" 18GA STEEL FRAME			DRAWN BY: M.P.		
DAYBAR INDUSTRIES LTD			9/29/2021 DATE		
50 WEST DRIVE, BRAMPTON, ON CANADA, L6T 2J4 TEL: 905 625-8000 FAX: 905 625-4204			21-123 DRAWING No		
REV. No	DESCRIPTION	DATE	REV. No	DESCRIPTION	DATE
1	OLD 17-054	9/29/21	3	-	-
2	-	-	4	-	-



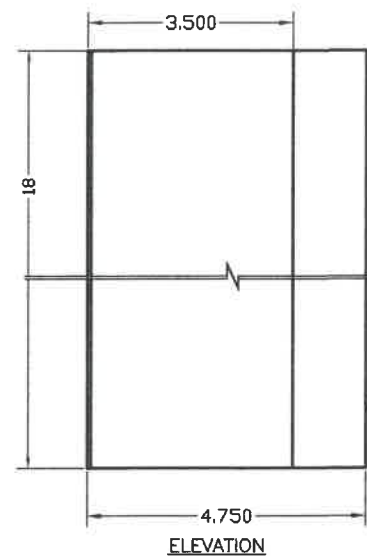
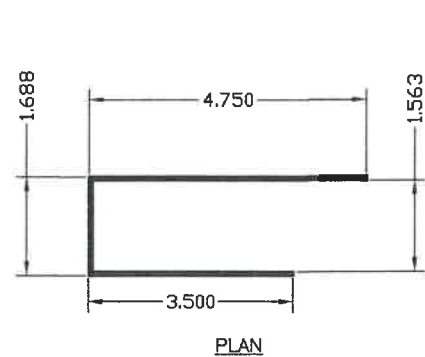
18 DOOR END CHANNEL REINFORCEMENT

MATERIAL:
16 GAUGE (0.051) MINIMUM GALVANNEAL



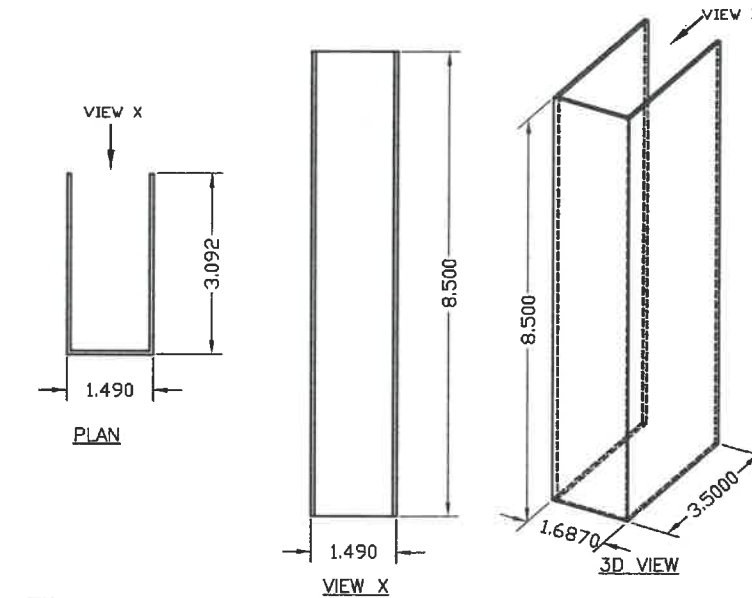
19 DOOR SURFACE CLOSER REINFORCING

MATERIAL:
14 GAUGE (0.072) MINIMUM GALVANNEAL



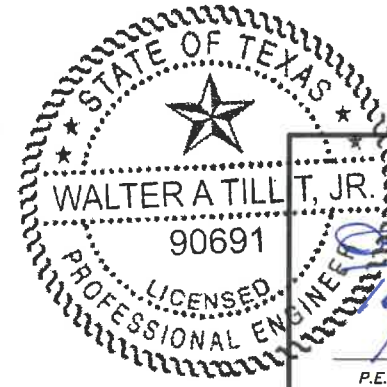
20 RP REINFORCING

GAGE 14 (0.074) MINIMUM RP REINFORCING GALVANNEAL



21 RIM PANIC SURFACE BOLT REINFORCING

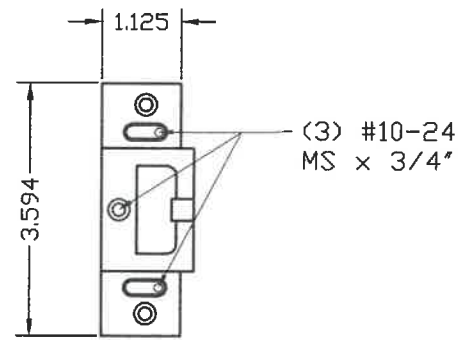
MATERIAL:
14 GAUGE (0.072) MINIMUM GALVANNEAL, GLUED TO DOOR AT HEAD & SILL USING HEMIBOND 8320-1 CONTACT ADHESIVE.



Walter A. Tillit, Jr.
P.E. SEAL/SIGNATURE/DATE

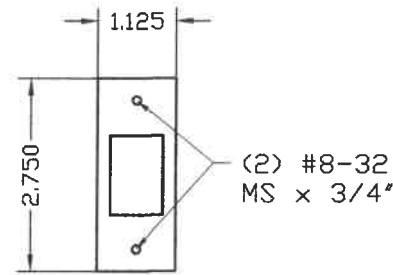
WALTER A. TILLIT Jr P.E.
PROFESSIONAL ENGINEER
6355 N.W 36 STREET, STE. 305
VIRGINIA GARDENS, FL 33166
PHONE(305) 871-1530 FAX (305) 871-1531
TEXAS LIC. # 90691
FIRM REGISTRATION # F-13790

TEXAS DEPARTMENT OF INSURANCE - 2018					
SERIES LS20GA FLUSH COMMERCIAL STEEL OUTSWING DOOR W/SERIES "AS" 18GA STEEL FRAME				DRAWN BY: M.P.	
DAYBAR INDUSTRIES LTD				9/29/2021 DATE	
50 WEST DRIVE, BRAMPTON, ON CANADA, L6T 2J4 TEL: 905 625-8000 FAX: 905 625-4204				21-123 DRAWING No	
REV. No	DESCRIPTION	DATE	REV. No	DESCRIPTION	DATE
1	OLD 17-054	9/29/21	3	-	-
2	-	-	4	-	-



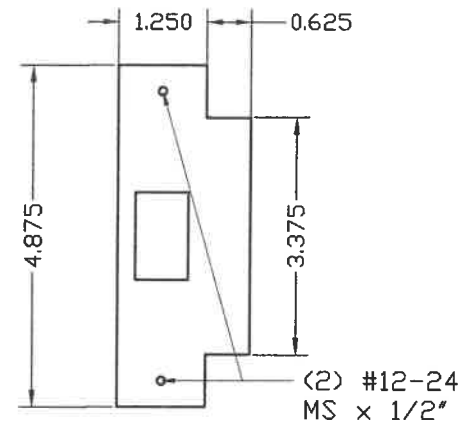
30 STRIKE FOR RIM EXIT DEVICE (11)

MATERIAL: (0.125") Steel, Painted Finish



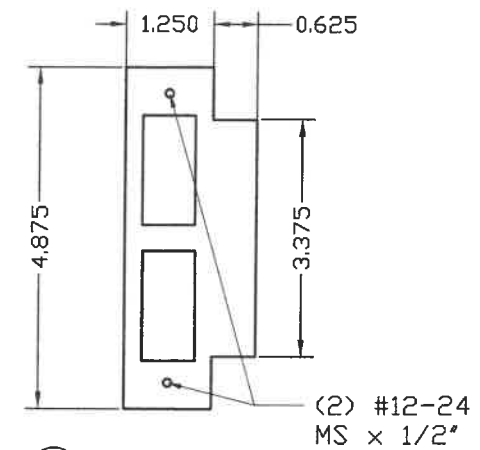
31 STRIKE FOR DEAD BOLT (14)

MATERIAL: (0.095) Steel, Nickel Finish



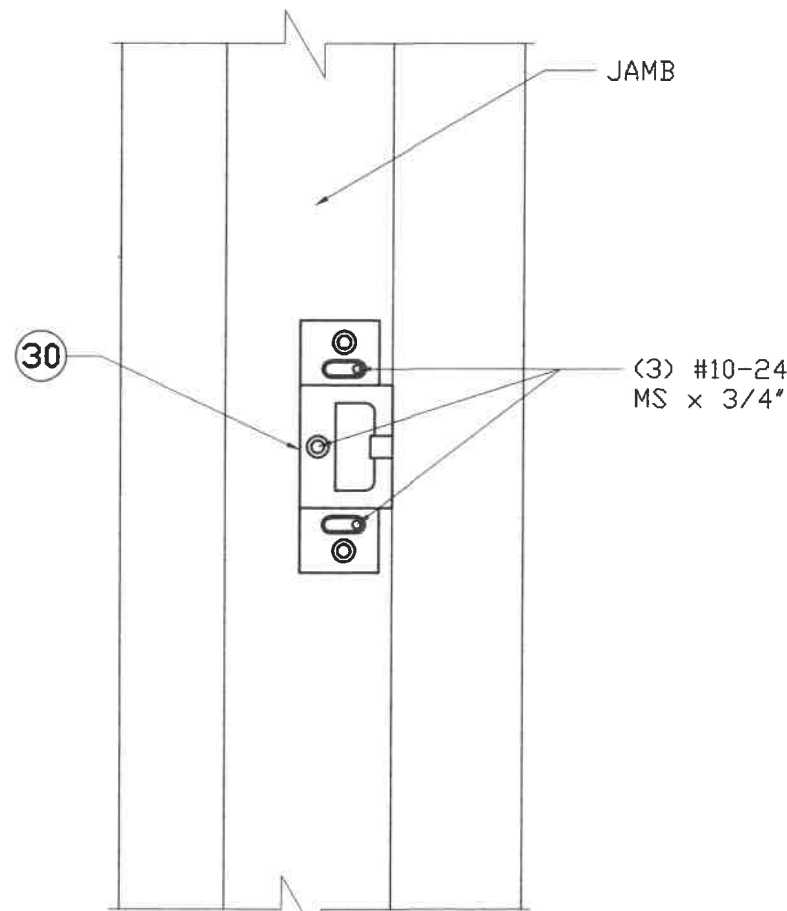
32 STRIKE FOR CYLINDRICAL LOCK (13)

MATERIAL: (0.095) Steel, Nickel Finish

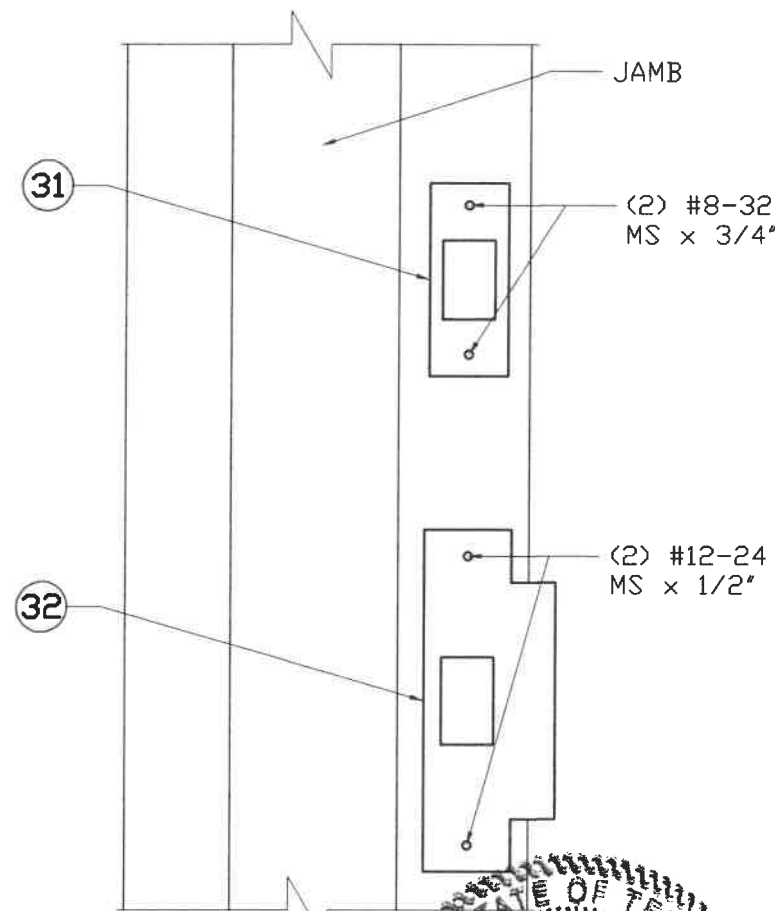


33 STRIKE FOR MORTISE LOCK (12)

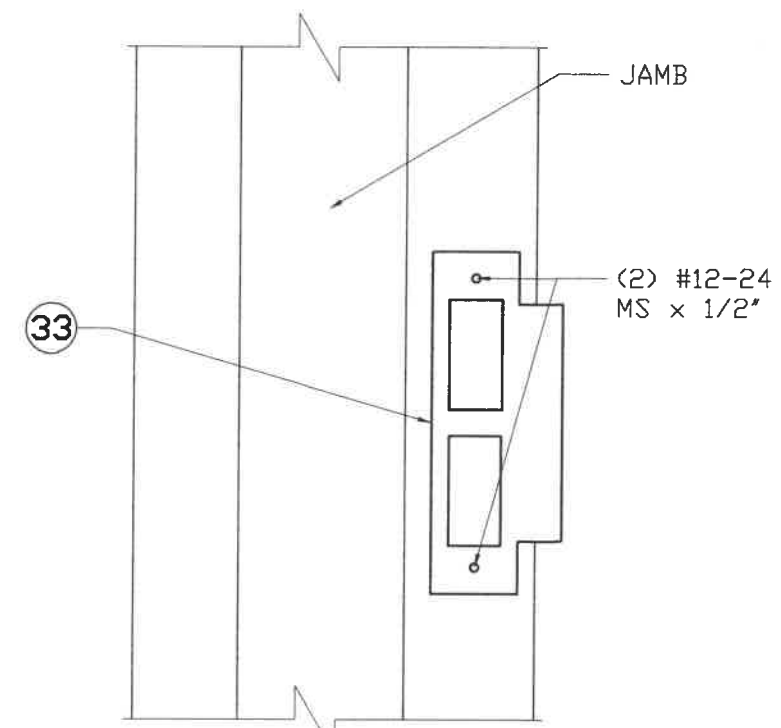
MATERIAL: (0.095) Steel, Nickel Finish



STRIKE DETAIL ELEVATION
Rim Exit Device



STRIKE DETAIL ELEVATION
Latch & Deadbolt

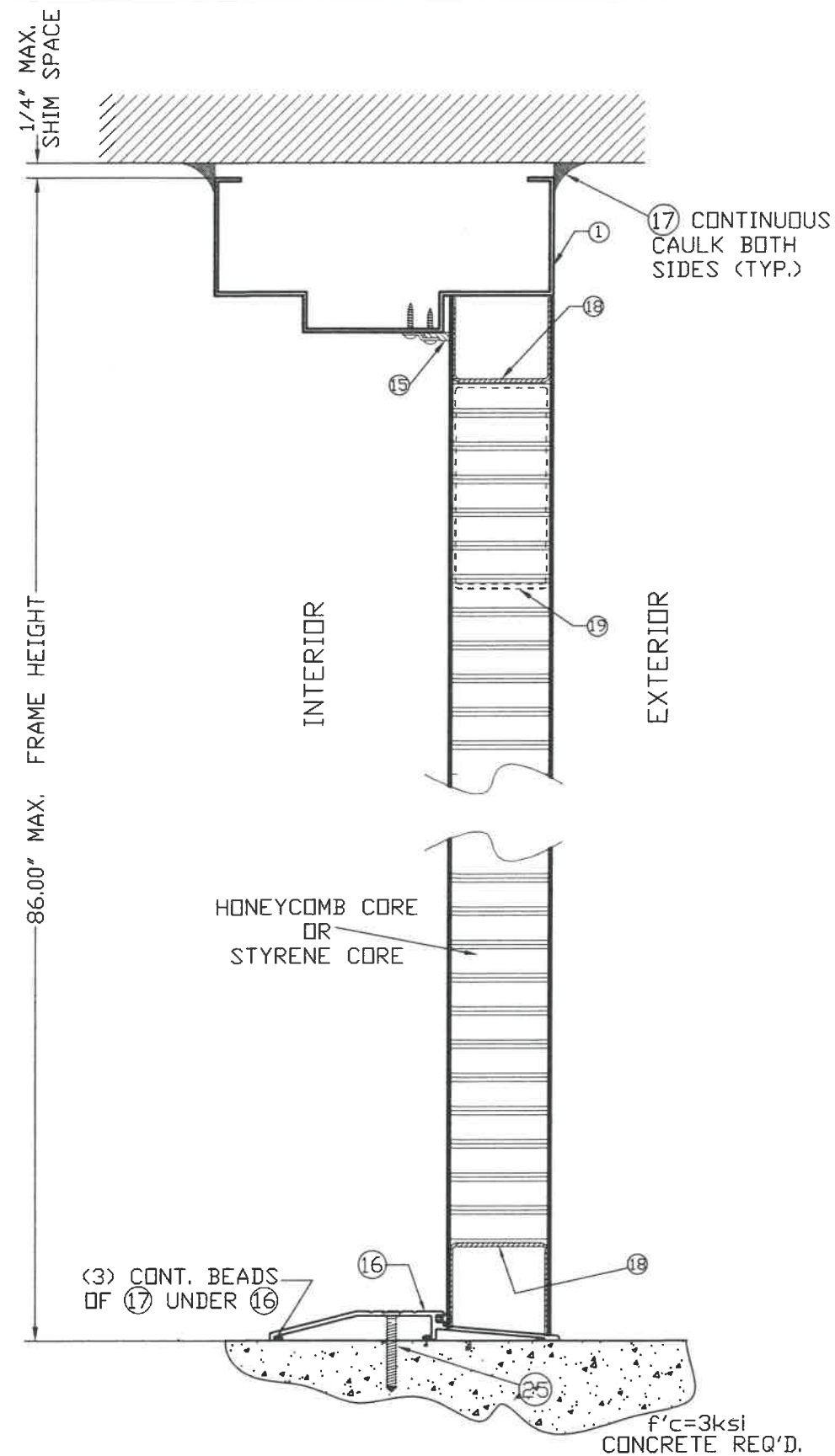


STRIKE DETAIL ELEVATION
Mortised Device Latch

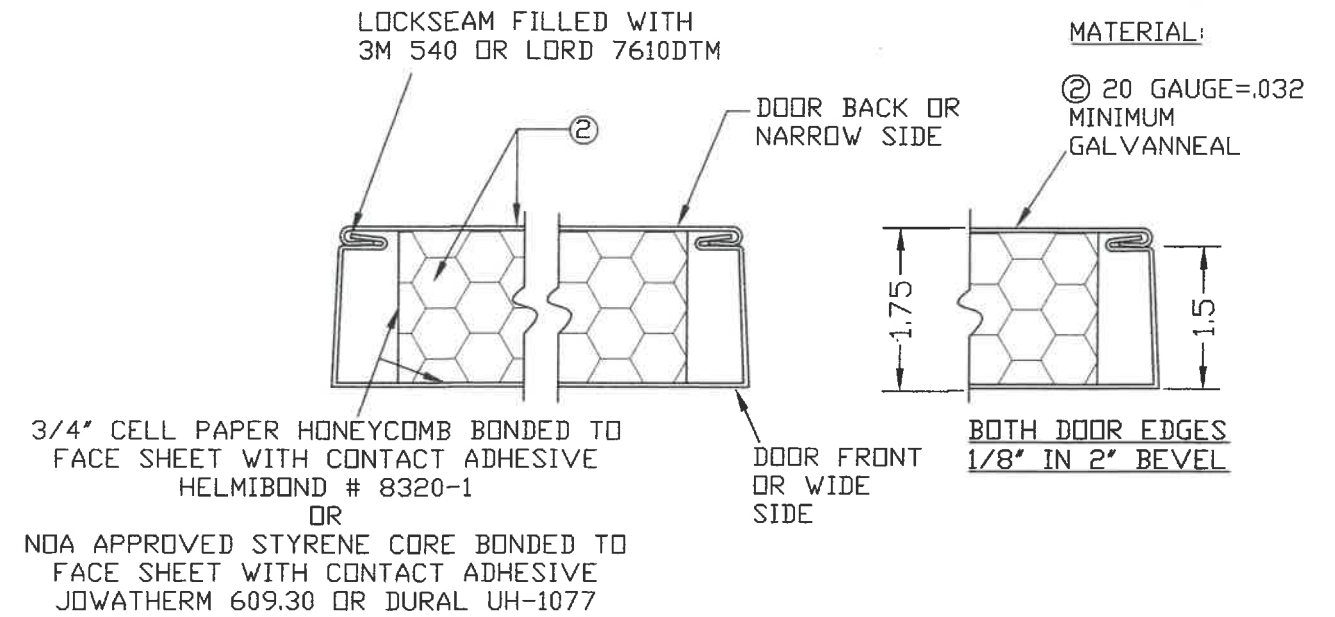


WALTER A. TILLIT Jr P.E.
PROFESSIONAL ENGINEER
6355 N.W 36 STREET, STE. 305
VIRGINIA GARDENS, FL 33166
PHONE (305) 871-1530 FAX (305) 871-1531
TEXAS LIC. # 90691
FIRM REGISTRATION # F-13790

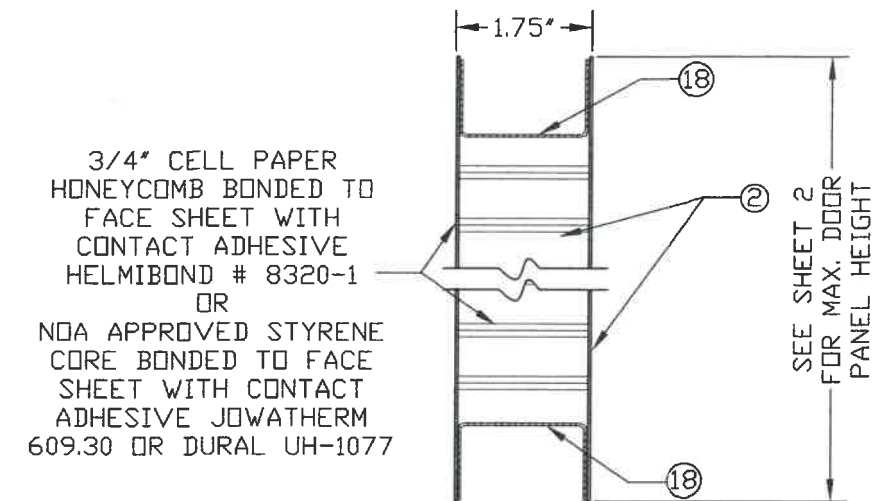
TEXAS DEPARTMENT OF INSURANCE - 2018					
SERIES LS20GA FLUSH COMMERCIAL STEEL OUTSWING DOOR W/SERIES "AS" 18GA STEEL FRAME				DRAWN BY: M.P.	
DAYBAR INDUSTRIES LTD				9/29/2021 DATE	
50 WEST DRIVE, BRAMPTON, ON CANADA, L6T 2J4 TEL: 905 625-8000 FAX: 905 625-4204				21-123 DRAWING No	
REV. No	DESCRIPTION	DATE	REV. No	DESCRIPTION	DATE
1	OLD 17-054	9/29/21	3	-	-
2	-	-	4	-	-



SECTION A1-A1, A2-A2 & A3-A3
AT DOOR PANEL/FRAME



DOOR SECTION THROUGH EDGE SEAM,
DETAIL X



VERTICAL SECTION AT DOOR PANEL
DOOR PANEL CONSTRUCTION



P.E. SEAL/SIGNATURE/DATE

WALTER A. TILLIT Jr P.E.
PROFESSIONAL ENGINEER
6355 N.W 36 STREET, STE. 305
VIRGINIA GARDENS, FL 33166
PHONE(305) 871-1530 FAX (305) 871-1531
TEXAS LIC. # 90691
FIRM REGISTRATION # F-13790

TEXAS DEPARTMENT OF INSURANCE - 2018

SERIES LS20GA FLUSH COMMERCIAL
STEEL OUTSWING DOOR W/SERIES "AS"
18GA STEEL FRAME

DRAWN BY:
M.P.

DAYBAR INDUSTRIES LTD

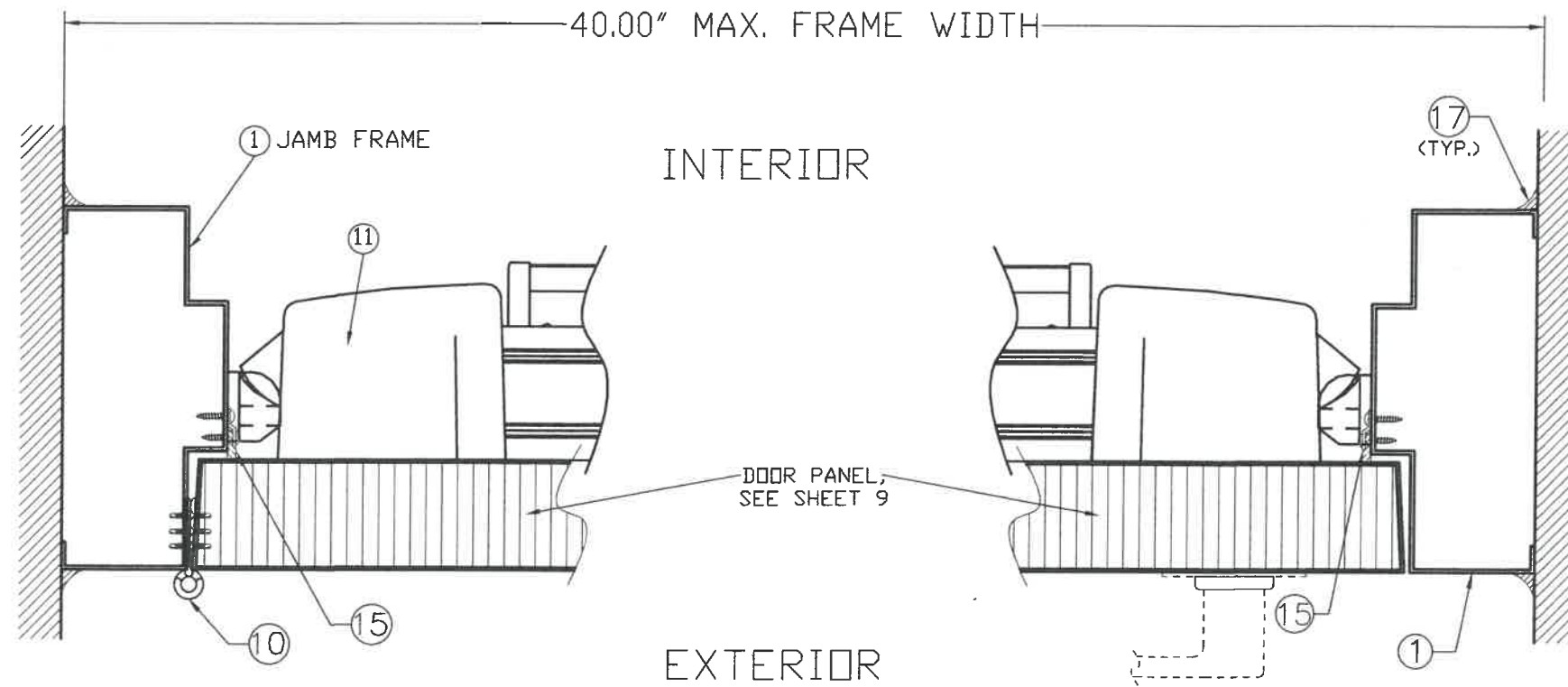
9/29/2021
DATE

50 WEST DRIVE, BRAMPTON,
ON CANADA, L6T 2J4
TEL: 905 625-8000 FAX: 905 625-4204

21-123
DRAWING No

REV. No	DESCRIPTION	DATE	REV. No	DESCRIPTION	DATE
1	OLD 17-054	9/29/21	3	-	-
2	-	-	4	-	-

SHEET 9 OF 14



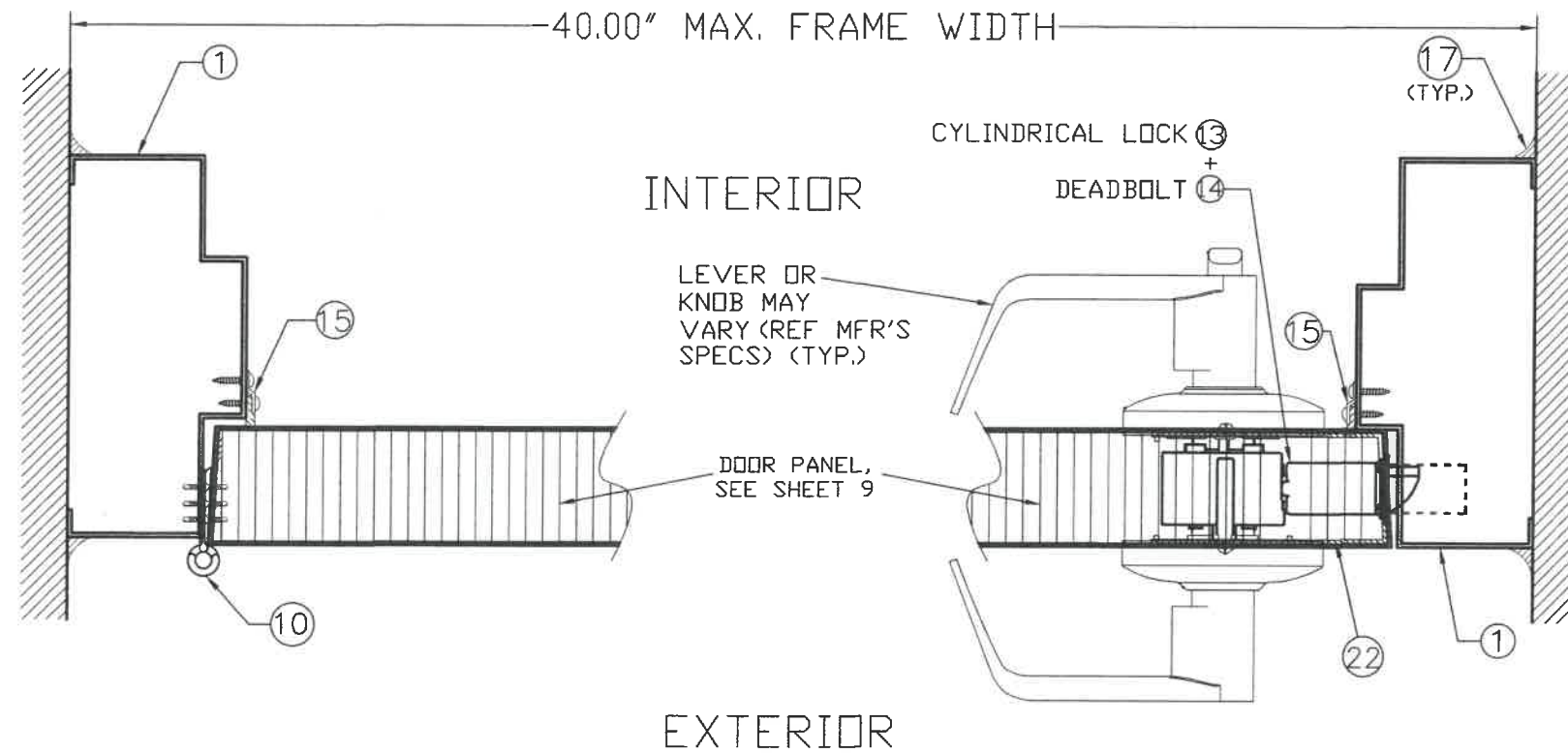
SECTION B1-B1



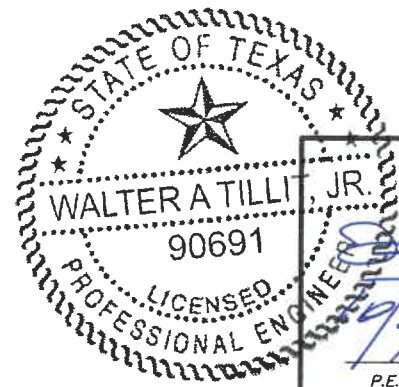
[Handwritten Signature]
 P.E. SEAL/SIGNATURE/DATE

WALTER A. TILLIT Jr P.E.
 PROFESSIONAL ENGINEER
 6355 N.W 36 STREET, STE. 305
 VIRGINIA GARDENS, FL 33166
 PHONE(305) 871-1530 FAX (305) 871-1531
 TEXAS LIC. # 90691
 FIRM REGISTRATION # F-13790

TEXAS DEPARTMENT OF INSURANCE - 2018					
SERIES LS20GA FLUSH COMMERCIAL STEEL OUTSWING DOOR W/SERIES "AS" 18GA STEEL FRAME				DRAWN BY: M.P.	
DAYBAR INDUSTRIES LTD				9/29/2021 DATE	
50 WEST DRIVE, BRAMPTON, ON CANADA, L6T 2J4 TEL: 905 625-8000 FAX: 905 625-4204				21-123 DRAWING No	
REV. No	DESCRIPTION	DATE	REV. No	DESCRIPTION	DATE
1	OLD 17-054	9/29/21	3	-	-
2	-	-	4	-	-
SHEET 10 OF 14					



SECTION B2-B2



Walter A. Tillit, Jr.
 P.E. SEAL/SIGNATURE/DATE

WALTER A. TILLIT Jr P.E.
 PROFESSIONAL ENGINEER
 6355 N.W 36 STREET, STE. 305
 VIRGINIA GARDENS, FL 33166
 PHONE(305) 871-1530 FAX (305) 871-1531
 TEXAS LIC. # 90691
 FIRM REGISTRATION # F-13790

TEXAS DEPARTMENT OF INSURANCE - 2018

SERIES LS20GA FLUSH COMMERCIAL
 STEEL OUTSWING DOOR W/SERIES "AS"
 18GA STEEL FRAME

DRAWN BY:
 M.P.

DAYBAR INDUSTRIES LTD

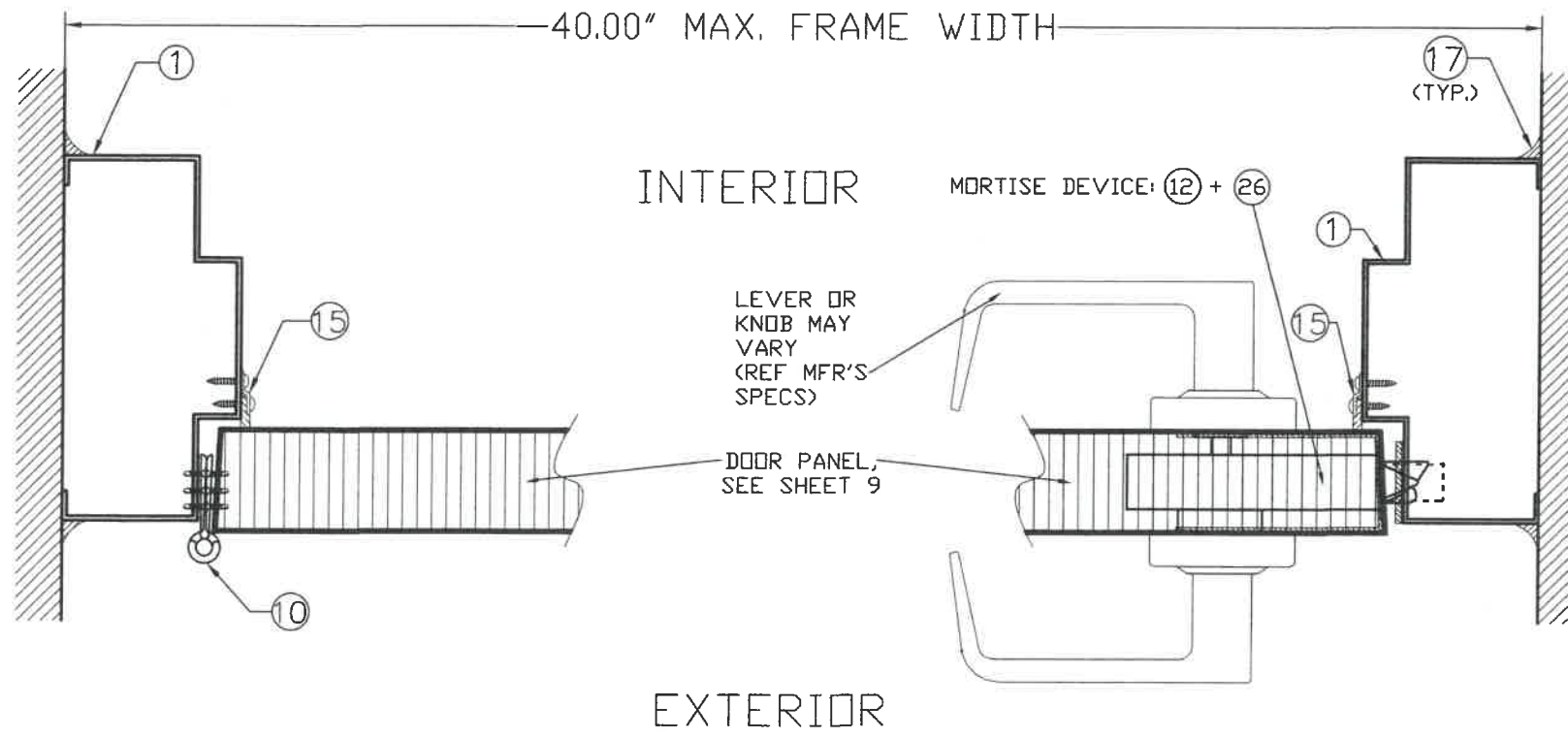
9/29/2021
 DATE

50 WEST DRIVE, BRAMPTON,
 ON CANADA, L6T 2J4
 TEL: 905 625-8000 FAX: 905 625-4204

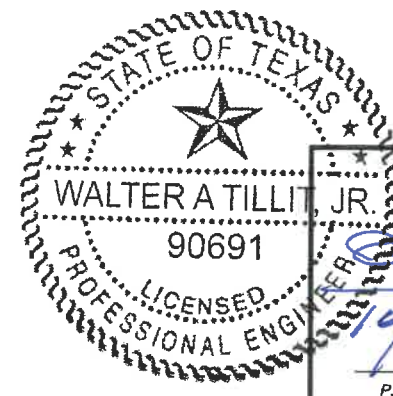
21-123
 DRAWING No

REV. No	DESCRIPTION	DATE	REV. No	DESCRIPTION	DATE
1	OLD 17-054	9/29/21	3	-	-
2	-	-	4	-	-

SHEET 11 OF 14



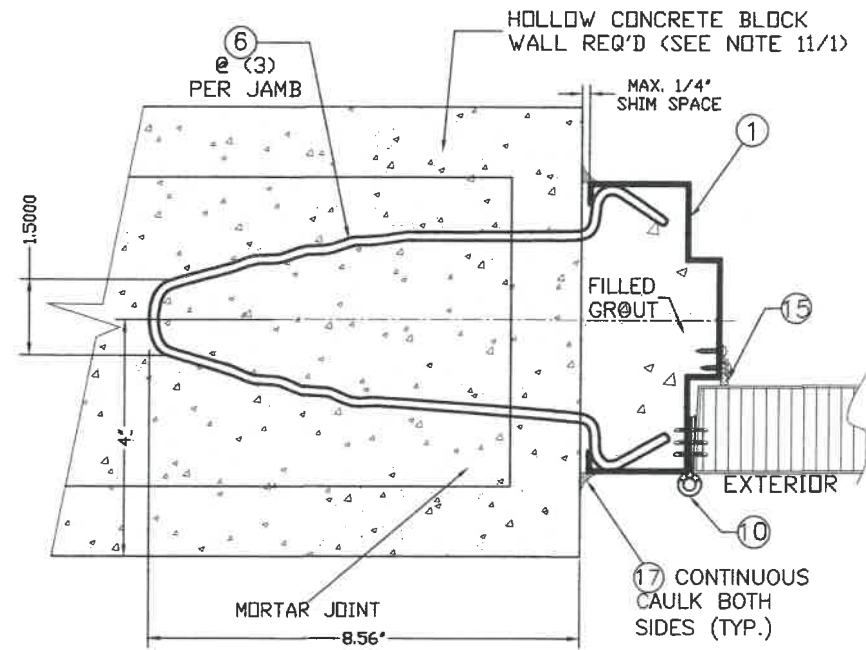
SECTION B3-B3



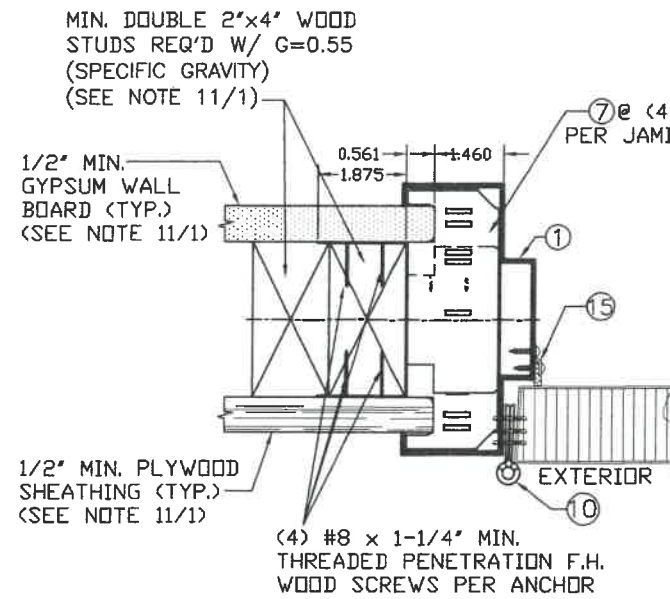
Walter A. Tillit Jr.
 P.E. SEAL/SIGNATURE/DATE

WALTER A. TILLIT Jr P.E.
 PROFESSIONAL ENGINEER
 6355 N.W 36 STREET, STE. 305
 VIRGINIA GARDENS, FL 33166
 PHONE(305) 871-1530 FAX (305) 871-1531
 TEXAS LIC. # 90691
 FIRM REGISTRATION # F-13790

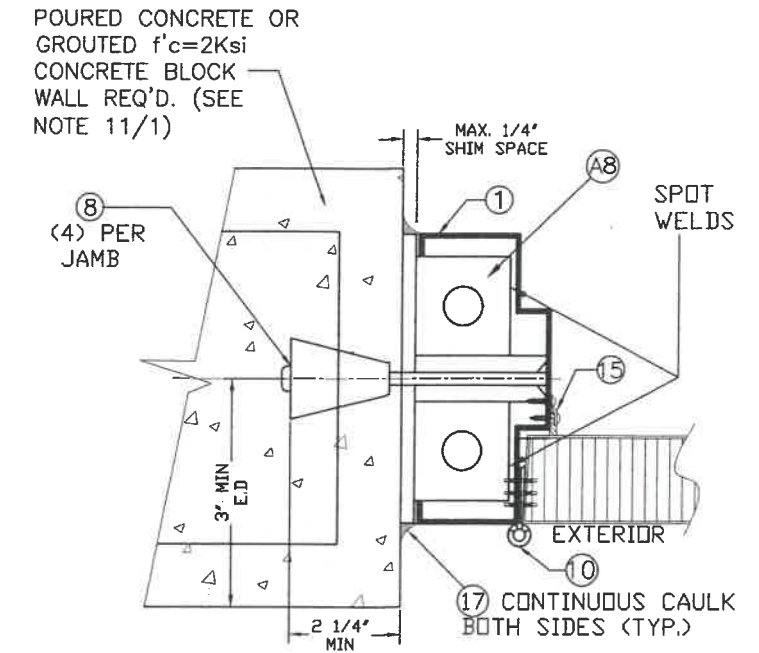
TEXAS DEPARTMENT OF INSURANCE - 2018					
SERIES LS20GA FLUSH COMMERCIAL STEEL OUTSWING DOOR W/SERIES "AS" 18GA STEEL FRAME				DRAWN BY: M.P.	
DAYBAR INDUSTRIES LTD				9/29/2021 DATE	
50 WEST DRIVE, BRAMPTON, ON CANADA, L6T 2J4 TEL: 905 625-8000 FAX: 905 625-4204				21-123 DRAWING No	
REV. No	DESCRIPTION	DATE	REV. No	DESCRIPTION	DATE
1	OLD 17-054	9/29/21	3	-	-
2	-	-	4	-	-



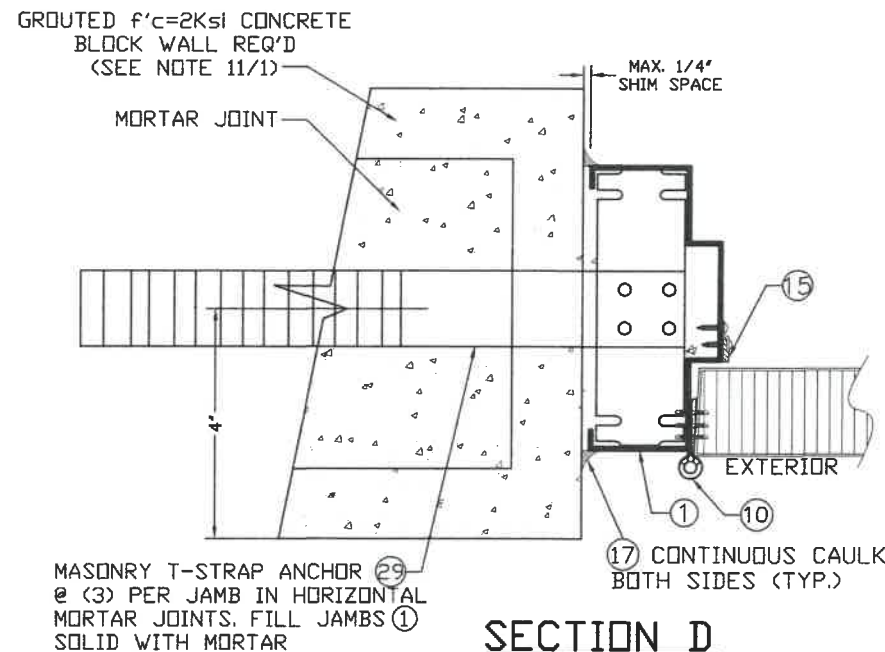
SECTION C



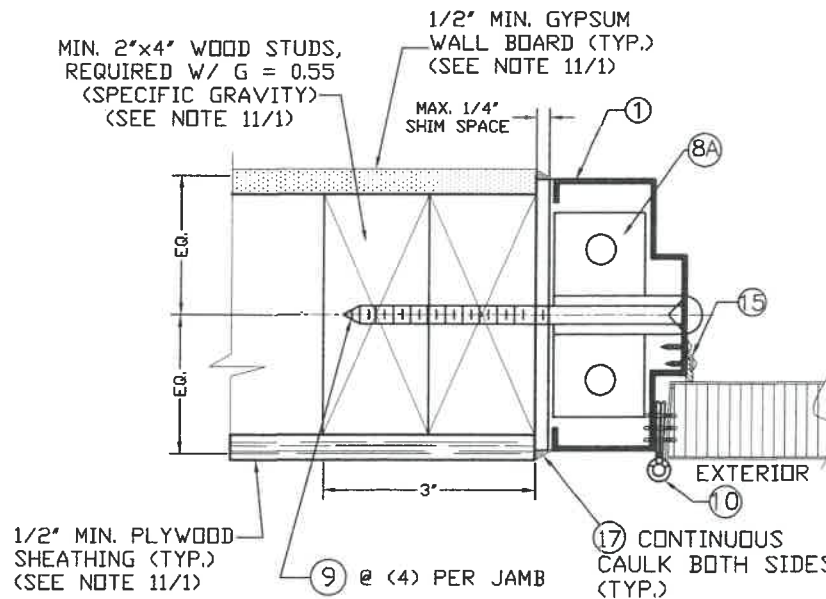
SECTION E



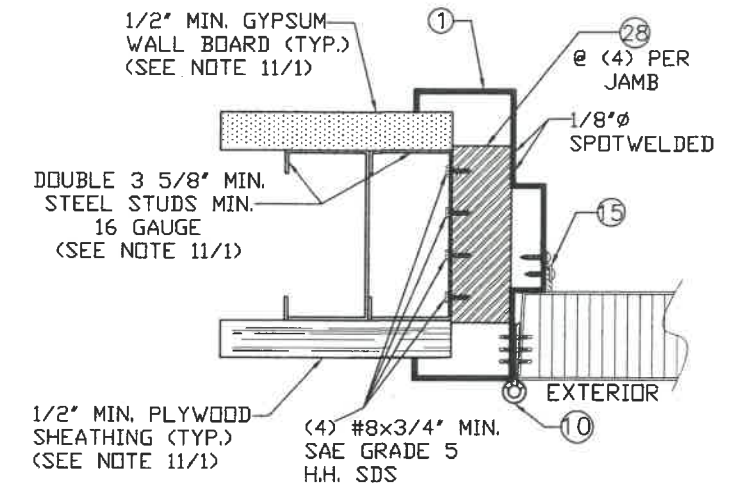
SECTION F



SECTION D



SECTION G

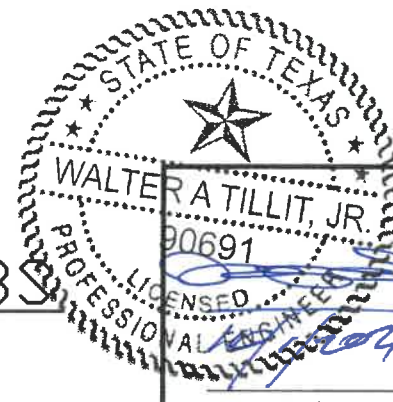


SECTION H

CASE 1

CASE 2

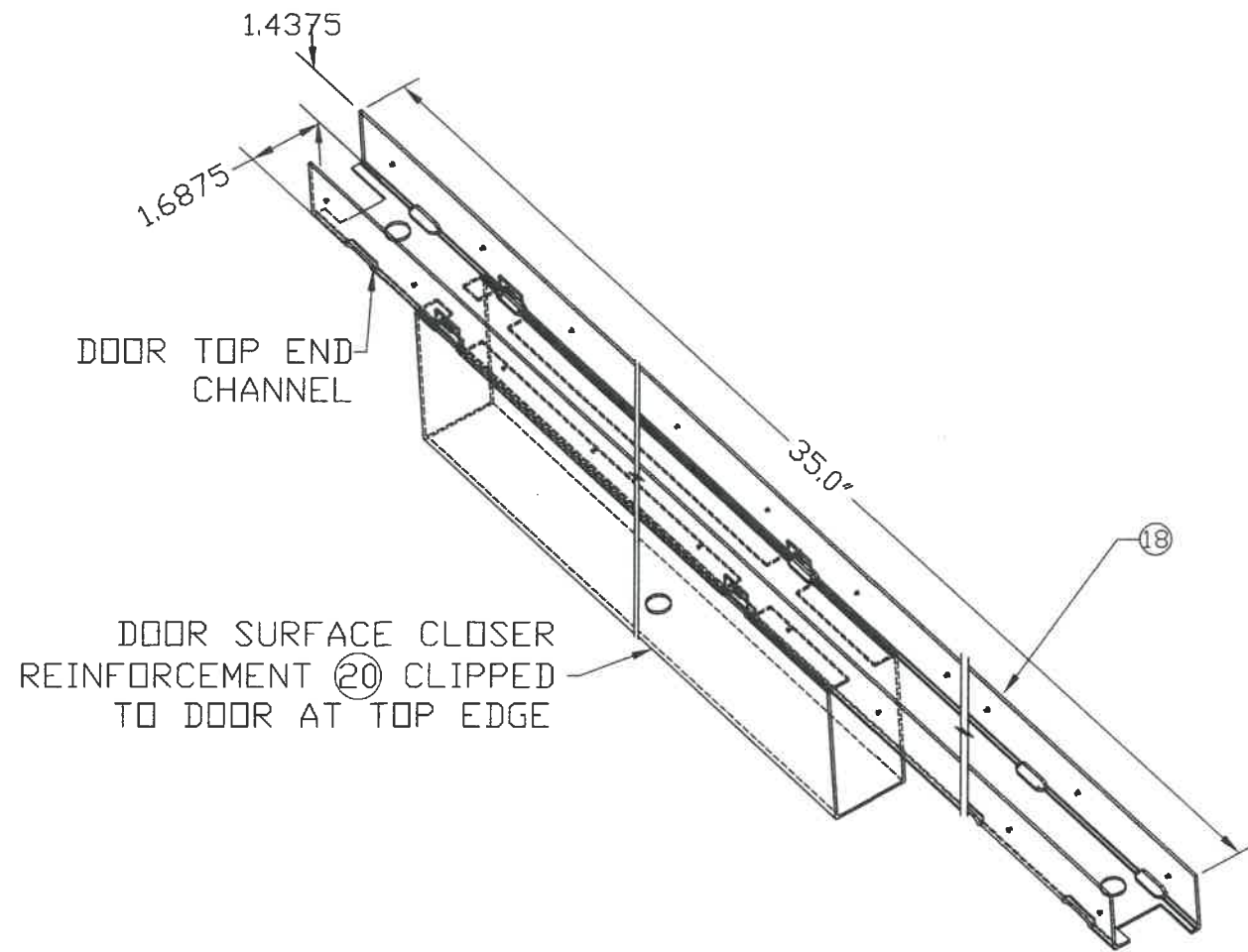
ANCHORAGE DETAIL AT JAMBS



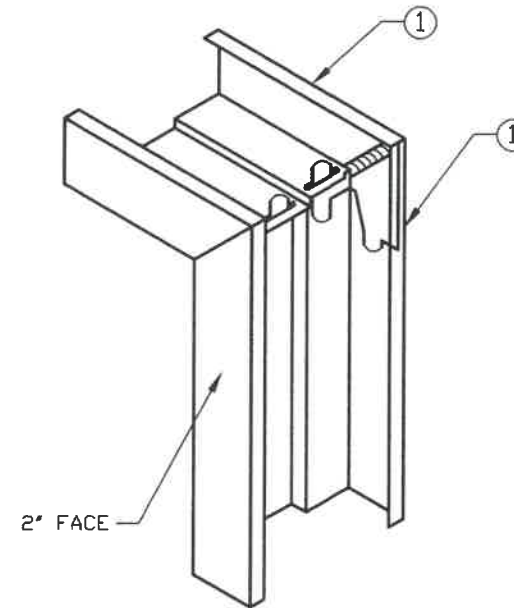
P.E. SEAL/SIGNATURE/DATE

WALTER A. TILLIT Jr P.E.
 PROFESSIONAL ENGINEER
 6355 N.W. 36 STREET, STE. 305
 VIRGINIA GARDENS, FL 33166
 PHONE(305) 871-1530 FAX (305) 871-1531
 TEXAS LIC. # 90691
 FIRM REGISTRATION # F-13790

TEXAS DEPARTMENT OF INSURANCE - 2018					
SERIES LS20GA FLUSH COMMERCIAL STEEL OUTSWING DOOR W/SERIES "AS" 18GA STEEL FRAME				DRAWN BY: M.P.	
DAYBAR INDUSTRIES LTD				9/29/2021 DATE	
50 WEST DRIVE, BRAMPTON, ON CANADA, L6T 2J4 TEL: 905 625-8000 FAX: 905 625-4204				21-123 DRAWING No	
REV. No	DESCRIPTION	DATE	REV. No	DESCRIPTION	DATE
1	OLD 17-054	9/29/21	3	-	-
2	-	-	4	-	-

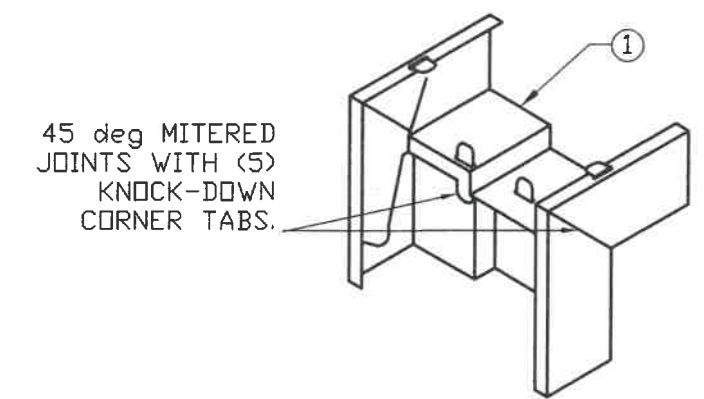


DOOR SURFACE CLOSER REINFORCEMENT (20)
AND END CHANNEL (18) ASSEMBLY DETAIL
DETAIL Z



1. DIEMITERED CORNER CONT. WELDED INSIDE FACES & AT RETURNS
2. CAULK COMPLETE INSIDE CORNER WITH GE SILICONE II (17)

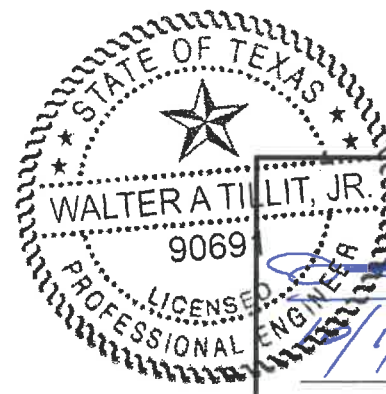
DETAIL Y



45 deg MITERED JOINTS WITH (5) KNOCK-DOWN CORNER TABS.
 FRAME CORNER: KD 3 PIECE ASSEMBLED AND CAULKED W/ (17)

DETAIL Y1

CORNER DETAILS Y, Y1



Walter A. Tillit, Jr.
 P.E. SEAL/SIGNATURE/DATE

WALTER A. TILLIT Jr P.E.
 PROFESSIONAL ENGINEER
 6355 N.W 36 STREET, STE. 305
 VIRGINIA GARDENS, FL 33166
 PHONE(305) 871-1530 FAX (305) 871-1531
 TEXAS LIC. # 90691
 FIRM REGISTRATION # F-13790

TEXAS DEPARTMENT OF INSURANCE - 2018					
SERIES LS20GA FLUSH COMMERCIAL STEEL OUTSWING DOOR W/SERIES "AS" 18GA STEEL FRAME				DRAWN BY: M.P.	
DAYBAR INDUSTRIES LTD				9/29/2021 DATE	
50 WEST DRIVE, BRAMPTON, ON CANADA, L6T 2J4 TEL: 905 625-8000 FAX: 905 625-4204				21-123 DRAWING No	
REV. No	DESCRIPTION	DATE	REV. No	DESCRIPTION	DATE
1	OLD 17-054	9/29/21	3	-	-
2	-	-	4	-	-