



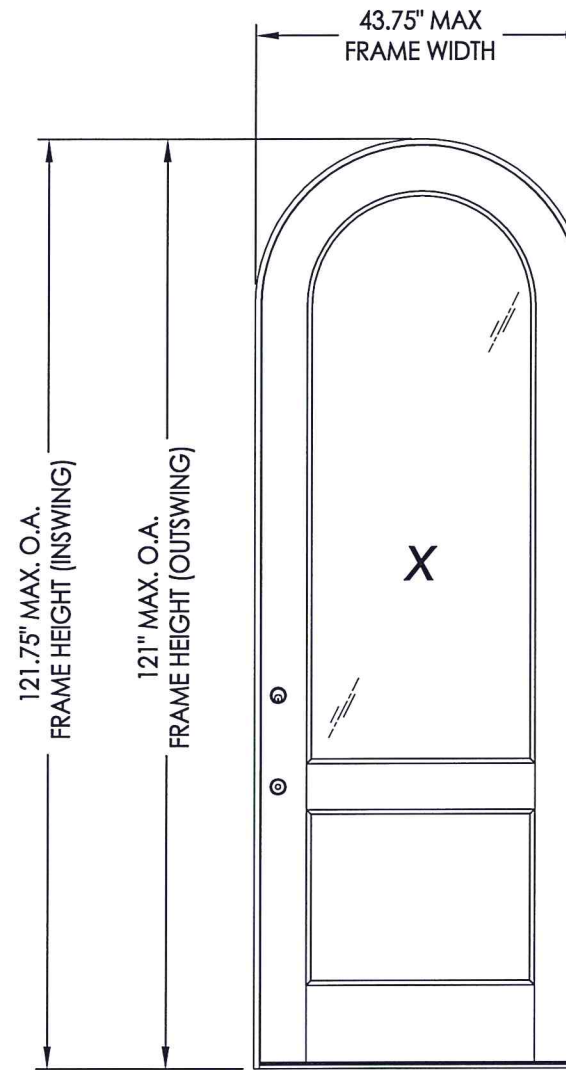
123 NE Beacon Dr.
Grants Pass, OR 97526

"Impact-Rated Door" WOOD GLAZED OR OPAQUE RADIUS TOP SINGLE DOOR IN SWING / OUT SWING

EVALUATED FOR USE IN THE STATE OF TEXAS

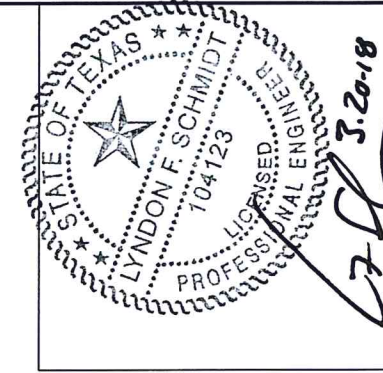
The Wood Door system described herein complies with the 2006 International Residential Code (IRC), Sections R301 & R613 and the 2006 International Building Code (IBC), Sections 1405.12, 1609, 1714.5, 2403 and 2404 (including Texas revisions) subject to the following conditions:

1. Anchors shall be as listed and spaced as shown in the details. Anchor embedment to base material shall be beyond wall dressing or stucco.
2. This product has been tested and evaluated as a large missile impact protective system for installation in the Seaward, Inland I and Inland II areas. The door meets missile level "D" as defined in ASTM E 1996.
3. Allowable design pressure requirements must be equal to or less than the design pressure rating shown in the design pressure chart, sheet 1 of this drawing.
4. Conditions not covered by this drawing are subject to further engineering analysis.



CONFIGURATION	DESIGN PRESSURE (PSF) IN SWING		DESIGN PRESSURE (PSF) OUT SWING	
	POSITIVE	NEGATIVE	POSITIVE	NEGATIVE
X	+65.0	-75.0	+65.0	-65.0

TABLE OF CONTENTS	
SHEET #	DESCRIPTION
1	Typical Elevations, Design Pressures & General Notes
2	Door Panel Details
3	Horizontal & Vertical Cross Sections
4	Vertical Cross Sections
5	Frame Anchoring
6	Hardware Details
7	Bill of Materials & Components



Documents Prepared By: Lyndon F. Schmidt, P.E.
TEXAS P.E. #104123

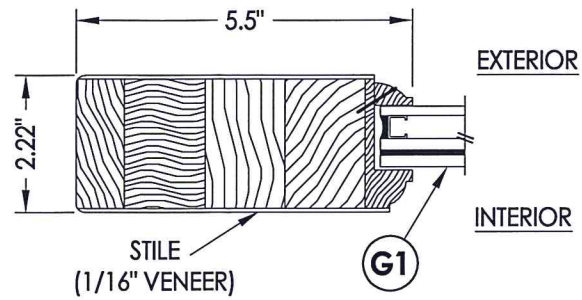
RW BUILDING CONSULTANTS, INC.
P.O. Box 230 Vairico FL 33595
Phone No.: 813.659.9197
TEXAS BOARD OF PROFESSIONAL ENGINEERS
CERTIFICATE OF REGISTRATION # F-11852

PRODUCT: ROGUE VALLEY WOOD DOOR
PART OR ASSEMBLY: TYPICAL ELEVATION, DESIGN PRESSURES & GENERAL NOTES

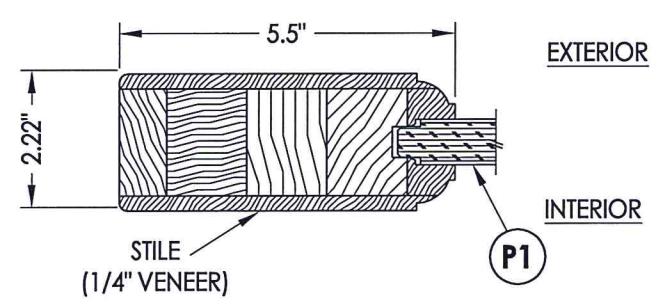
NO.	DATE	BY	REVISIONS

DATE: 7/31/17
SCALE: N.T.S.
DWG. BY: JK
CHK. BY: LFS
DRAWING NO.: TX-4711
SHEET 1 OF 7

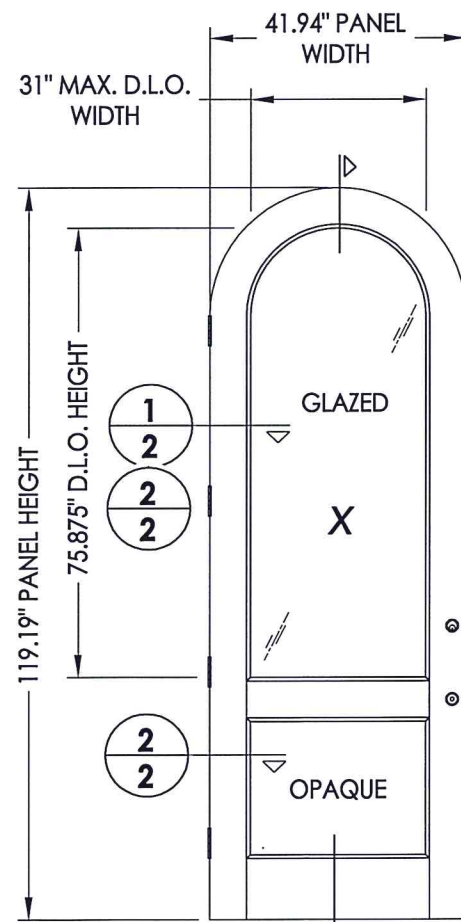
R:\Clients\Rogue Valley Doors PERMANENT\B - Texas Dept of Ins\TDI - DR-XXX (Sub ID 6970)\C - Drawings\TX-4711.dwg, 2.6



1
2 **HORIZONTAL CROSS SECTION**



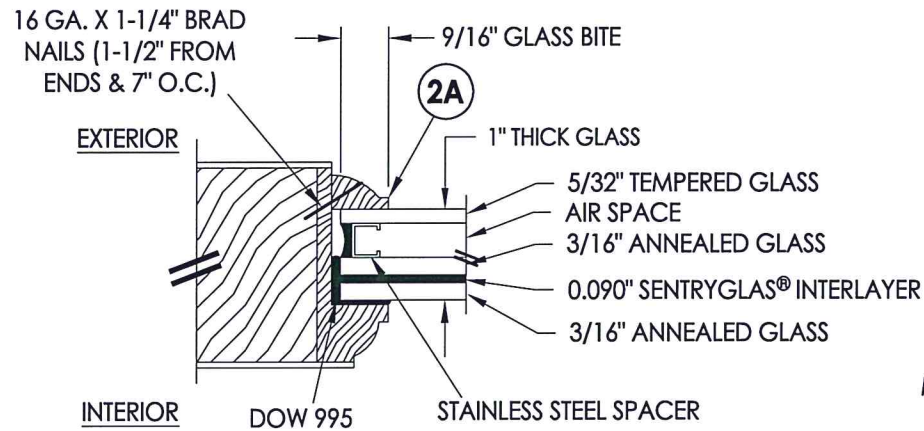
2
2 **HORIZONTAL CROSS SECTION**



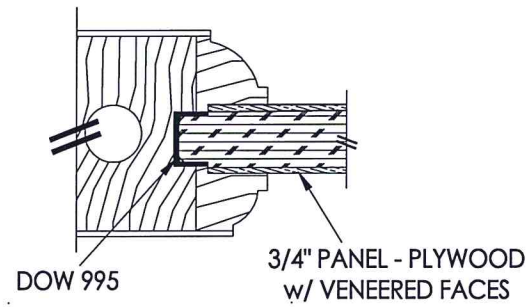
3 **4**
2 **2**

40 **WOOD DOOR PANEL**
Rogue Valley
Glazed or Opaque

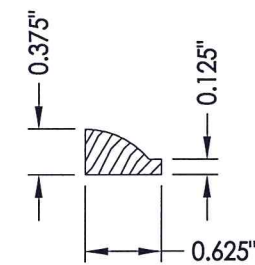
WOOD DOOR COMPONENTS:
VENEER/EDGES: DOUGLAS FIR (G = 0.51)
ENGINEERED STAVE CORE: POPLAR (G = 0.42)



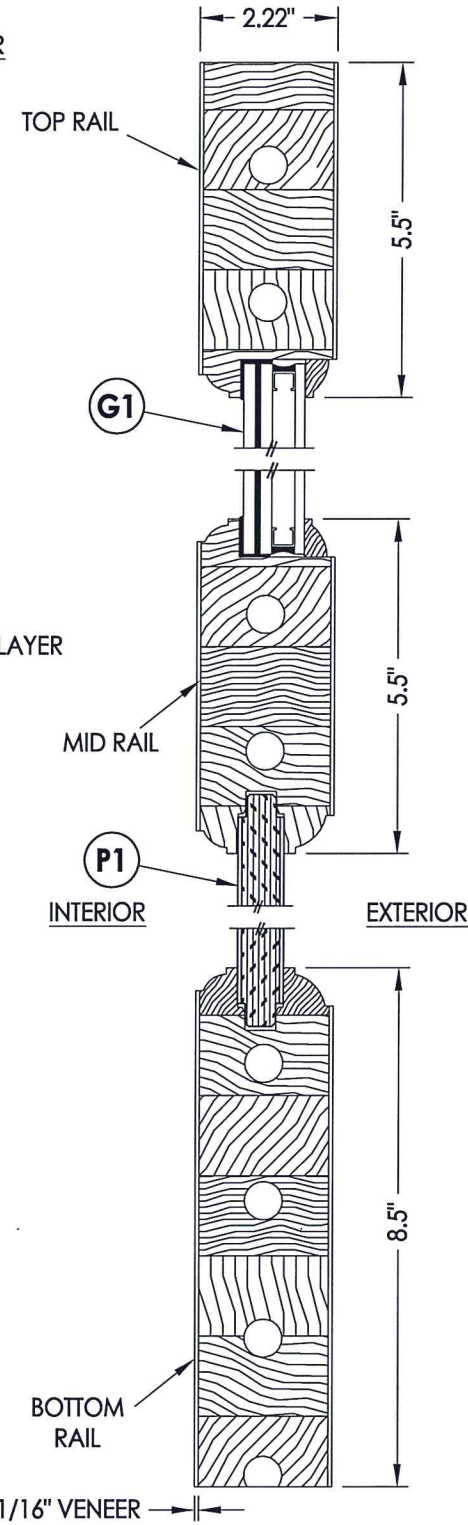
G1 **GLAZING DETAIL**



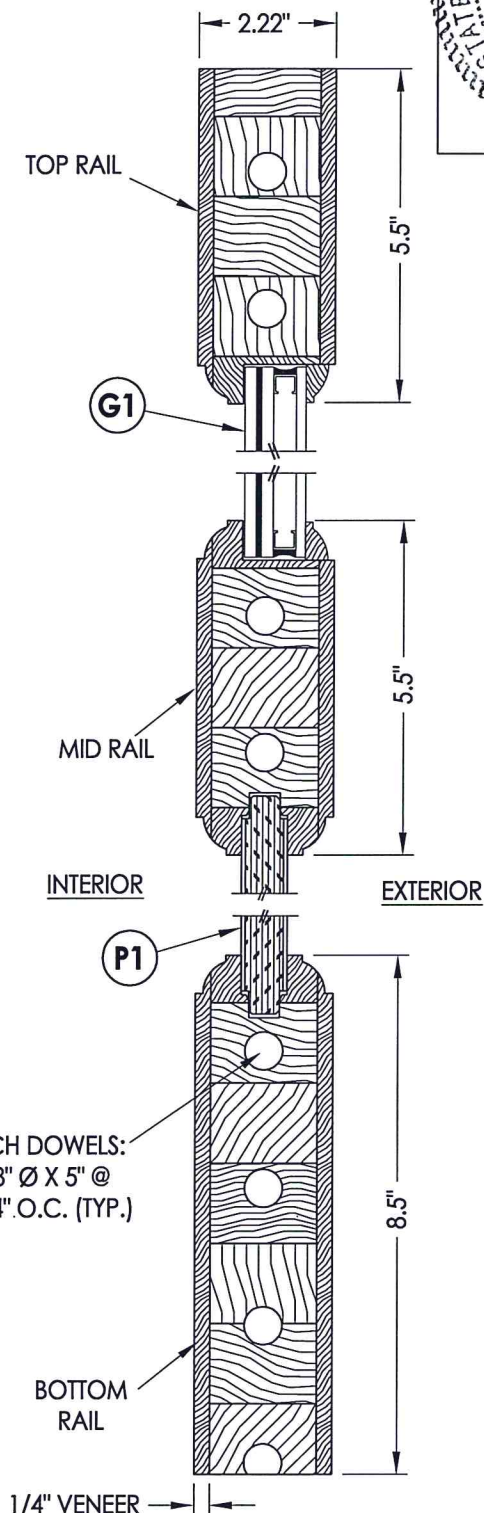
P1 **PANEL INFIL DETAIL**



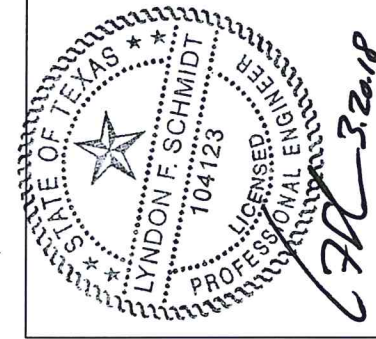
2A **GLAZING BEAD**



3
2 **VERTICAL CROSS SECTION**



4
2 **VERTICAL CROSS SECTION**



Documents Prepared By: Lyndon F. Schmidt, P.E.
TEXAS P.E. #104123

RW BUILDING CONSULTANTS, INC.
P.O. Box 230 Valrico FL 33595
Phone No.: 813.659.9197

TEXAS BOARD OF PROFESSIONAL ENGINEERS
CERTIFICATE OF REGISTRATION # F-11852

PRODUCT: ROGUE VALLEY WOOD DOOR

PART OR ASSEMBLY: DOOR PANEL DETAILS

NO.	DATE	BY	REVISIONS

DATE: 7/31/17

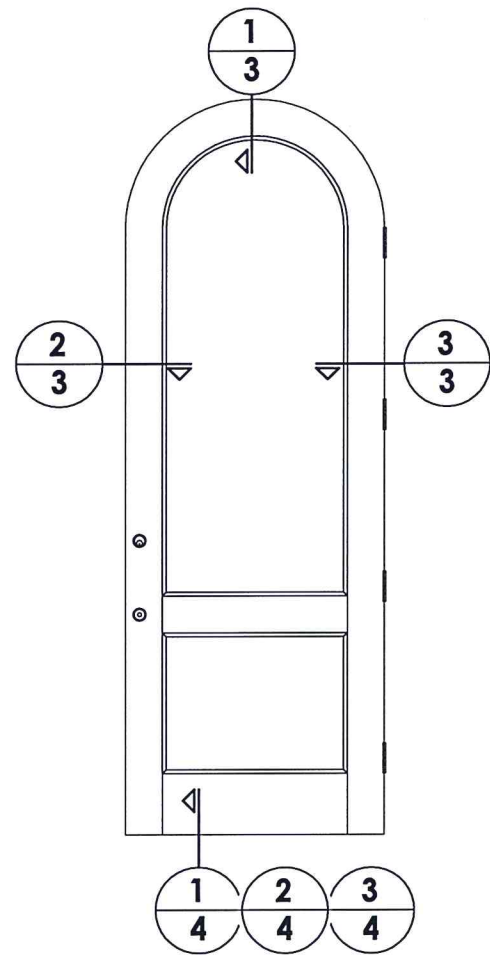
SCALE: N.T.S.

DWG. BY: JK

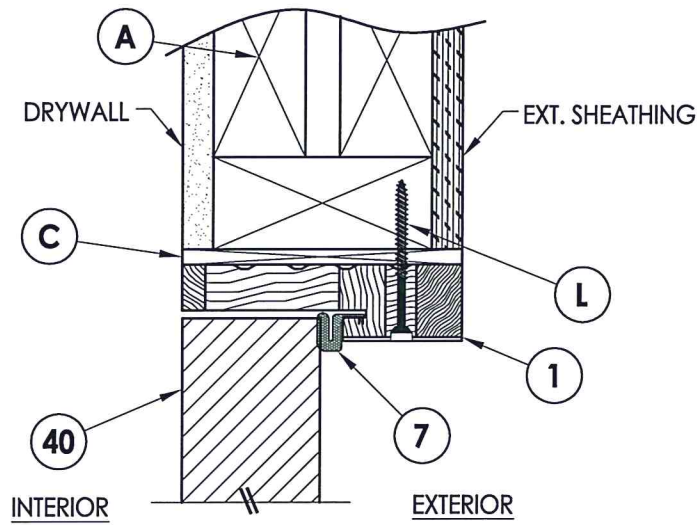
CHK. BY: LFS

DRAWING NO.: TX-4711

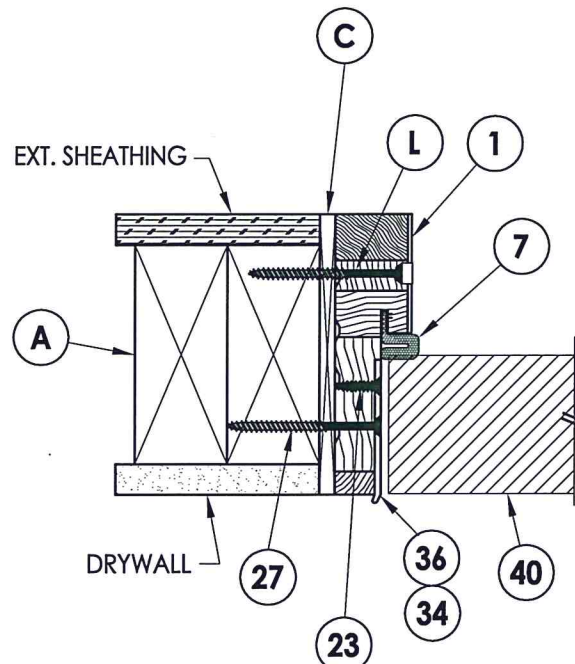
SHEET 2 OF 7



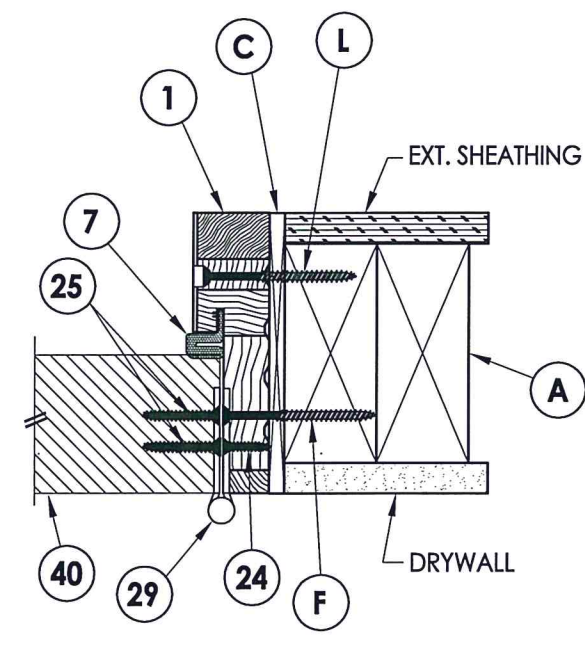
HARDWARE TABLE			
MANUFACTURER	MODEL	MAX. DESIGN PRESSURE (PSF)	
		INSWING	OUTSWING
HOPPE	MULTIPOINT HARDWARE: HLS 9000 SERIES ROUND BOLT (3-PT.)	+65/-75	+65/-65
SCHLAGE	KNOB: F51 DEADBOLT: B60N	+55/-75	+60/-60



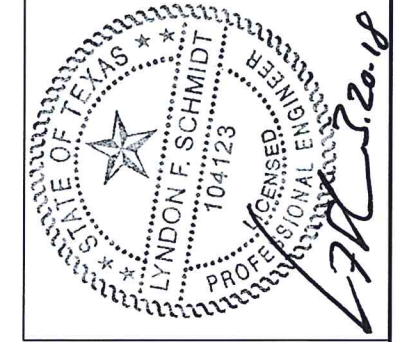
1 VERTICAL CROSS SECTION
3 Inswing shown (Outswing similar)



MULTIPOINT LOCK ONLY
2 HORIZONTAL CROSS SECTION
3 Inswing shown (Outswing similar)



3 HORIZONTAL CROSS SECTION
3 Inswing shown (Outswing similar)



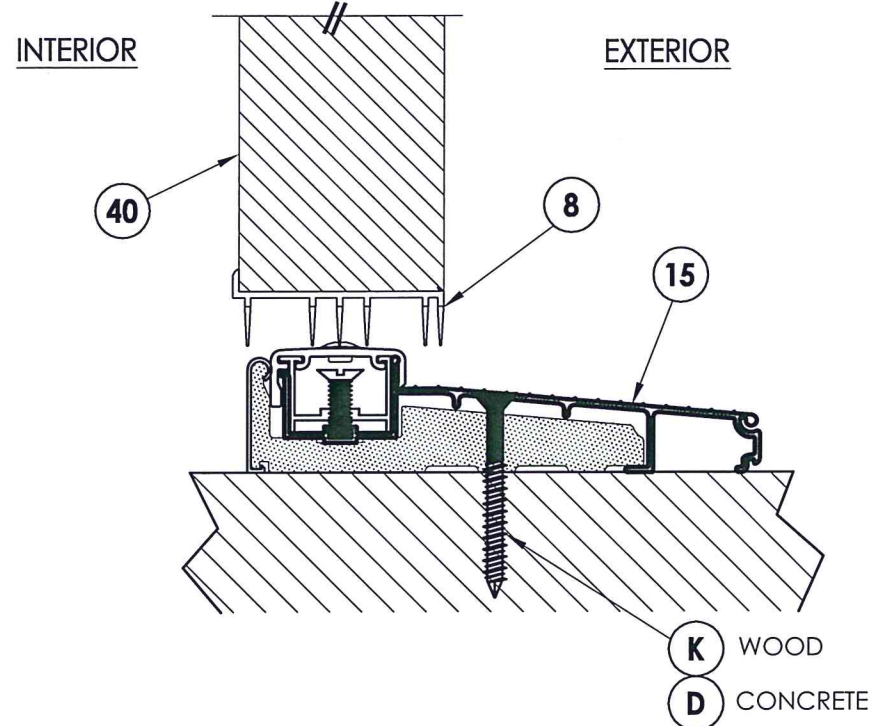
Documents Prepared By: Lyndon F. Schmidt, P.E.
TEXAS P.E. #104123

RW BUILDING CONSULTANTS, INC.
P.O. Box 230 Valrico FL 33595
Phone No.: 813.659.9197
TEXAS BOARD OF PROFESSIONAL ENGINEERS
CERTIFICATE OF REGISTRATION # F-11852

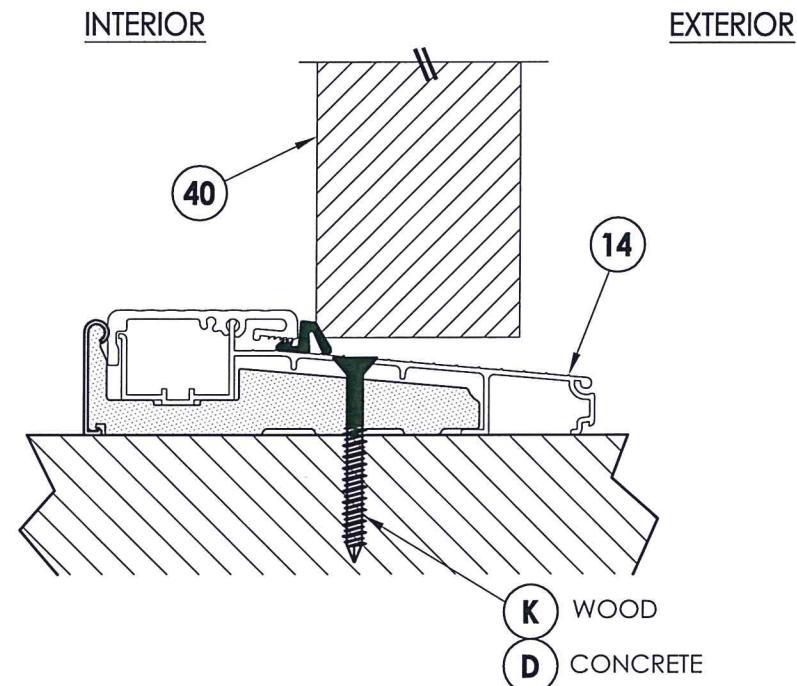
PRODUCT: ROGUE VALLEY WOOD DOOR
PART OR ASSEMBLY: HORIZONTAL & VERTICAL CROSS SECTIONS

NO.	DATE	BY	REVISIONS

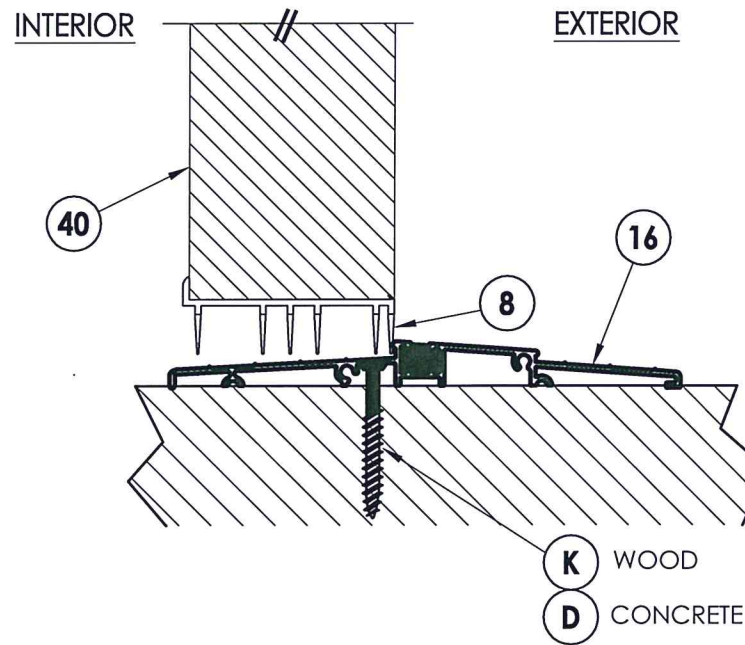
DATE: 7/31/17
SCALE: N.T.S.
DWG. BY: JK
CHK. BY: LFS
DRAWING NO.: TX-4711
SHEET 3 OF 7



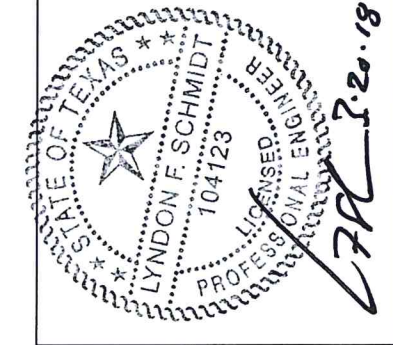
1 VERTICAL CROSS SECTION
4 Inswing



2 VERTICAL CROSS SECTION
4 Outswing



3 VERTICAL CROSS SECTION
4 Inswing shown (Outswing similar)
 (Single door only)



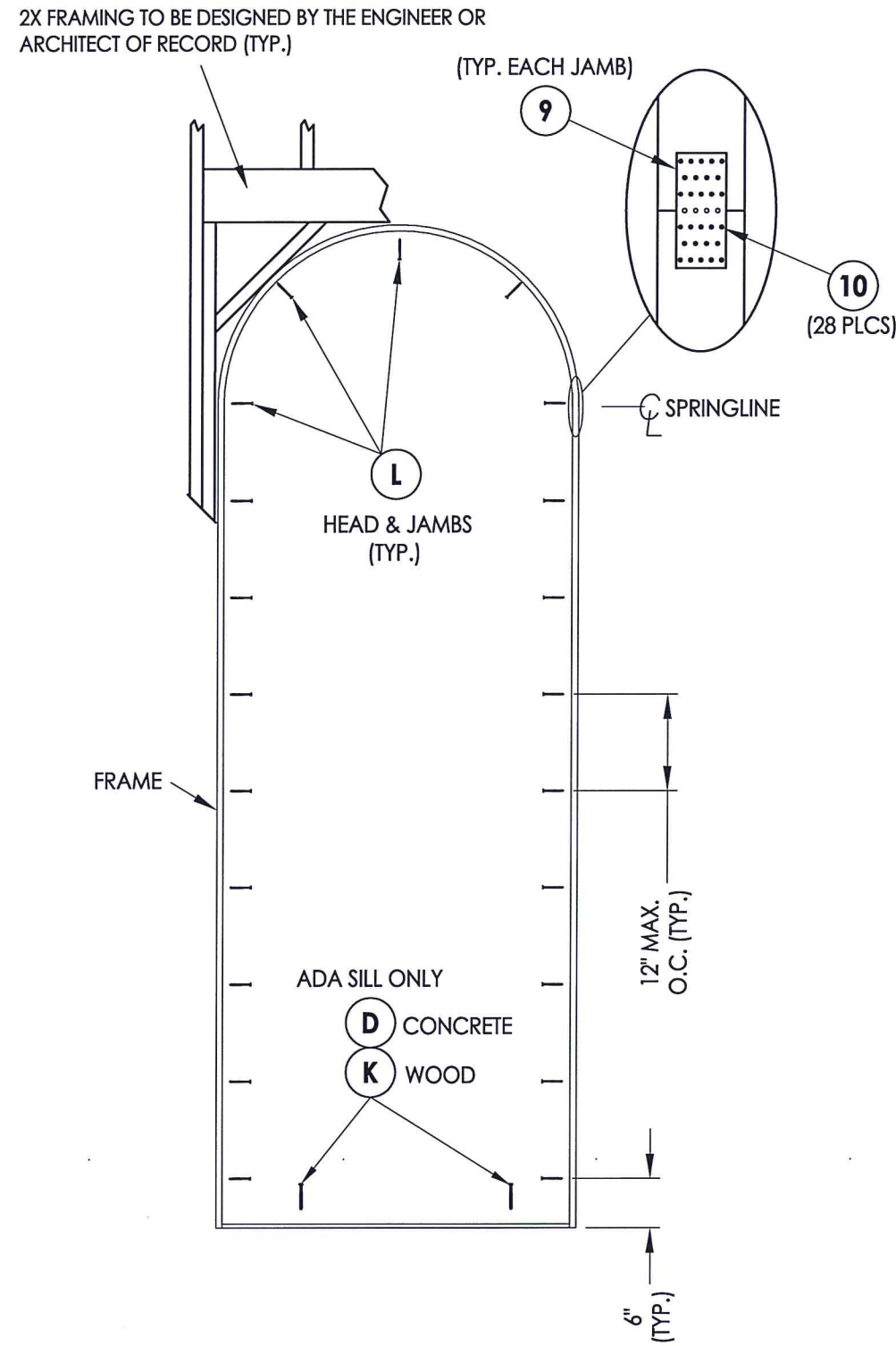
Documents Prepared By: Lyndon F. Schmidt, P.E.
 TEXAS P.E. #104123

RW BUILDING CONSULTANTS, INC.
 P.O. Box 230 Valrico FL 33595
 Phone No.: 813.659.9197
 TEXAS BOARD OF PROFESSIONAL ENGINEERS
 CERTIFICATE OF REGISTRATION # F-11852

PRODUCT: ROGUE VALLEY WOOD DOOR
 PART OR ASSEMBLY: VERTICAL CROSS SECTIONS

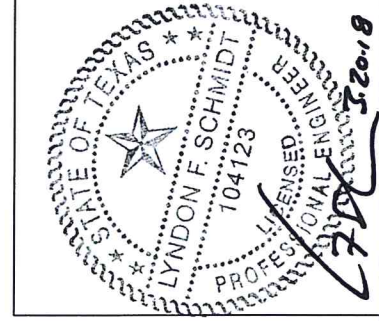
NO.	DATE	BY

DATE: 7/31/17
 SCALE: N.T.S.
 DWG. BY: JK
 CHK. BY: LFS
 DRAWING NO.: TX-4711
 SHEET 4 OF 7



FRAME ANCHORING
X
(RADIUS TOP)

NOTE:
1. ALL FRAME CORNERS SECURED WITH (3) #8 X 2-1/2" FH DEEP THREAD WOOD SCREWS.



Documents Prepared By: Lyndon F. Schmidt, P.E.
TEXAS P.E. #104123

RW BUILDING CONSULTANTS, INC.
P.O. Box 230 Valrico FL, 33595
Phone No.: 813.659.9197
TEXAS BOARD OF PROFESSIONAL ENGINEERS
CERTIFICATE OF REGISTRATION # F-11852

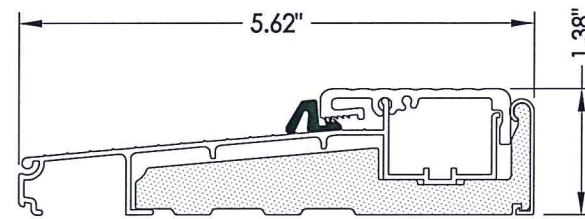
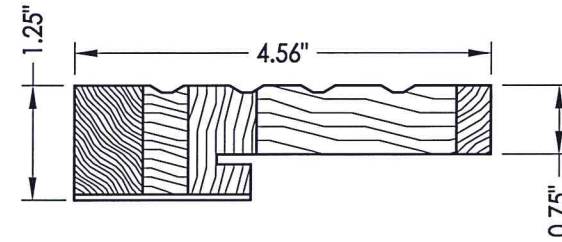
PRODUCT: ROGUE VALLEY WOOD DOOR
PART OR ASSEMBLY: FRAME ANCHORING

NO.	DATE	BY

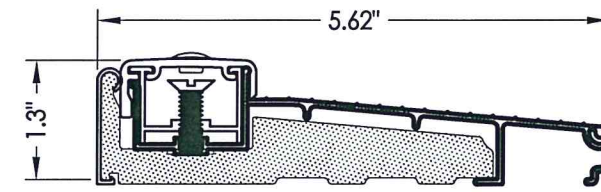
DATE: 7/31/17
SCALE: N.T.S.
DWG. BY: JK
CHK. BY: LFS
DRAWING NO.: TX-4711
SHEET 5 OF 7

BILL OF MATERIALS		
ITEM #	DESCRIPTION	MATERIAL
A	2X FRAMING (G >= 0.42)	WOOD
C	1/4" MAX. SHIM SPACE	-
D	1/4" PFH IELCO OR ITW CONCRETE SCREW (1-3/4" MIN. EMB.)	STEEL
F	#12 X 2-1/2" PFH WOOD SCREW	STEEL
K	#10 PFH WOOD SCREW (1-3/4" MIN. EMB.)	STEEL
L	#10 X 2-1/2" PFH WOOD SCREW (1.15" MIN. EMBEDMENT)	STEEL
1	JAMB	WOOD
7	WEATHERSTRIP	FOAM
9	20 GA. SPLICE PLATE (SIMPSON STRONG-TIE TP-37)	STEEL
10	#6 X 1/2" PPH WOOD SCREW	STEEL
14	OUTSWING THRESHOLD	ALUM/COMP
15	INSWING THRESHOLD	ALUM/COMP
16	ADA THRESHOLD	ALUM
23	#8 X 3/4" PFH WOOD SCREW	STEEL
24	#12 x 1" PFH WOOD SCREW	STEEL
25	#12 x 1-1/4" PFH WOOD SCREW	STEEL
26	#8 x 2-1/2" FH DEEP THREAD WOOD SCREW	STEEL
27	#9 x 2-1/2" PFH WOOD SCREW	STEEL
29	4.5" X 4.5" HINGE	STEEL
34	LATCH STRIKE PLATE	STEEL
35	DEADBOLT STRIKE PLATE	STEEL
36	MULTIPOINT STRIKE PLATE	STEEL
37	MULTIPOINT ROUND BOLT STRIKE DETAIL	
40	DOOR PANEL	WOOD

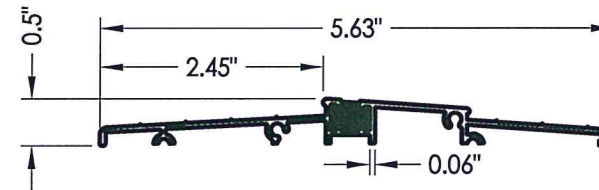
WOOD FRAME COMPONENTS: POPLAR (G = 0.42)



14 **OUTSWING THRESHOLD**
COLUMBIA



15 **INSWING THRESHOLD**
COLUMBIA



16 **ADA THRESHOLD**
ENDURA

CONCRETE ANCHOR NOTES:

- Concrete anchor locations at the corners may be adjusted to maintain the min. edge distance to mortar joints.
- Concrete anchor locations noted as "MAX. ON CENTER" must be adjusted to maintain the min. edge distance to mortar joints, additional concrete anchors may be required to ensure the "MAX. ON CENTER" dimension are not exceeded.
- Concrete anchor table:

ANCHOR TYPE	ANCHOR SIZE	MIN. EMBEDMENT	MIN. CLEARANCE TO MASONRY EDGE	MIN. CLEARANCE TO ADJACENT ANCHOR
ITW TAPCON®	1/4"	1-1/4"	2"	4"
ELCO ULTRACON®	1/4"	1-1/4"	1"	4"

WOOD SCREW INSTALLATION NOTES:

- Maintain a minimum 5/8" edge distance, 1" end distance, & 1" o.c. spacing of wood screws to prevent the splitting of wood.

Documents Prepared By: Lyndon F. Schmidt, P.E.
TEXAS P.E. #104123

RW BUILDING CONSULTANTS, INC.
P.O. Box 230 Valrico FL 33595
Phone No.: 813.659.9197
TEXAS BOARD OF PROFESSIONAL ENGINEERS
CERTIFICATE OF REGISTRATION # F-11852

PRODUCT: ROGUE VALLEY WOOD DOOR

PART OR ASSEMBLY: BILL OF MATERIALS & COMPONENTS

NO.	DATE	BY	REVISIONS

DATE: 7/31/17
SCALE: N.T.S.
DWG. BY: JK
CHK. BY: LFS
DRAWING NO.: TX-4711
SHEET 7 OF 7