

GENERAL NOTES:

- ALL FASTENERS SHALL BE IN ACCORDANCE WITH THESE DRAWINGS. SPECIFIED ANCHOR EMBED TO BASE MATERIAL SHALL BE BEYOND WALL FINISH OR STUCCO.
- OPENINGS, BUCKING & BUCKING FASTENERS MUST BE PROPERLY DESIGNED & INSTALLED TO TRANSFER WIND LOADS TO THE STRUCTURE.
- THESE NON-IMPACT RATED PRODUCT INSTALLATIONS ARE IN ACCORDANCE WITH AND MEET THE REQUIREMENTS OF THE 2018 INTERNATIONAL BUILDING CODE (IBC).
- ALL ANCHORS SECURING PRODUCT FRAME TO PRESSURE TREATED BUCKS OR WOOD FRAMING SHALL BE CAPABLE OF RESISTING CORROSION CAUSED BY THE PRESSURE TREATING CHEMICALS IN THE WOOD.
- TO THE BEST OF OUR KNOWLEDGE, THE PRODUCT SHOWN HEREIN IS CERTIFIED & QUALITY ASSURED BY A NATIONALLY ACCREDITED CERTIFICATION/QA ENTITY & SHALL BE LABELED IN ACCORDANCE WITH CERTIFICATION/QA ENTITIES SPECIFICATIONS. PRODUCT ASSEMBLY IS NOT PART OF THIS DRAWING AND SHALL BE IN ACCORDANCE WITH THE MANUFACTURER'S QUALITY ASSURANCE SPECIFICATIONS & TESTING REPORTS.
- CERTIFICATION OF THESE PRODUCT INSTALLATIONS SHALL BE CONSIDERED VOID IF ANY OF THE FOLLOWING APPLY: 1) THEY ARE INSTALLED WITHOUT A BUILDING PERMIT FROM THE APPLICABLE LOCAL BUILDING DEPARTMENT. 2) IF THEY ARE INSTALLED BY ANYONE OTHER THAN A LICENSED CONTRACTOR EXPERIENCED WITH WINDOW/DOOR INSTALLATIONS. 3) IF CHANGES HAVE OCCURRED TO THE PRODUCT'S CERTIFICATION ENTITY'S CERTIFICATE THAT CAUSE THESE INSTALLATIONS TO BE INCORRECT OR INCONSISTENT WITH WHAT HAS BEEN TESTED.
- THE LEAST DESIGN PRESSURE SPECIFIED EITHER IN THIS DRAWING OR IN THE PRODUCTS CERTIFICATION SHALL CONTROL FOR THE INSTALLED PRODUCT.
- THESE DRAWINGS CERTIFY THE PRODUCT INSTALLATION ONLY. WATER PROOFING OF THE INSTALLED PRODUCT IS NOT PART OF THIS INSTALLATION CERTIFICATION. THAT RESPONSIBILITY SHALL BE THAT OF THE MANUFACTURER &/OR INSTALLER.

FRAME SCREWS OR INSTALLATION CLIPS WHERE SHOWN AT HEAD 6" FROM CORNERS AND MAX. 10" O.C. (REQUIRED ONLY WHEN BOTH THE DOOR FRAME HEIGHT EXCEEDS 81 1/2" & THE REQUIRED DESIGN PRESSURE EXCEEDS +/-30 PSF). SEE "FRAME ANCHOR REQUIREMENTS TABLE" ON THIS SHEET FOR REQUIREMENTS.

NAIL FIN IS NOT REQUIRED AT HEAD OF XO & OX DOORS WHEN FRAME SCREWS OR INSTALLATION CLIPS ARE USED.

THESE DRAWINGS ARE APPLICABLE ONLY TO THE PRODUCT SPECIFIED. THEY MAY NOT BE USED FOR THE ASSEMBLY AND/OR INSTALLATION OF ANY OTHER PRODUCT NOR MAY THEY BE USED FOR RATIONAL AND/OR LOCAL APPROVAL OF ANY PRODUCT NOT PRODUCED BY THE MANUFACTURER STATED ON THESE DRAWINGS.

DRAWN BY:	W.W.S.	CHECKED BY:	W.W.S.
PLLOT:	1=24	DATE:	05/11/16

NO.	REVISION DESCRIPTION	BY	DATE

JOB INFORMATION:
PELLA CORPORATION
 102 MAIN STREET
 PELLA, IA 50219
 641-621-1000

CONSULTANTS
W. W. SCHAEFER ENGINEERING & CONSULTING, P.A. (REG. NO. F-14980)
 7480 150TH COURT NORTH
 PALM BEACH GARDENS, FL 33418
 PHONE: 561-744-3424

DRAWING TITLE
LIFESTYLE MODEL 4 NON-IMPACT CLAD SLIDING DOOR

DRAWING NO. **1915T** REV.
 SHEET NO. **1** OF **7**

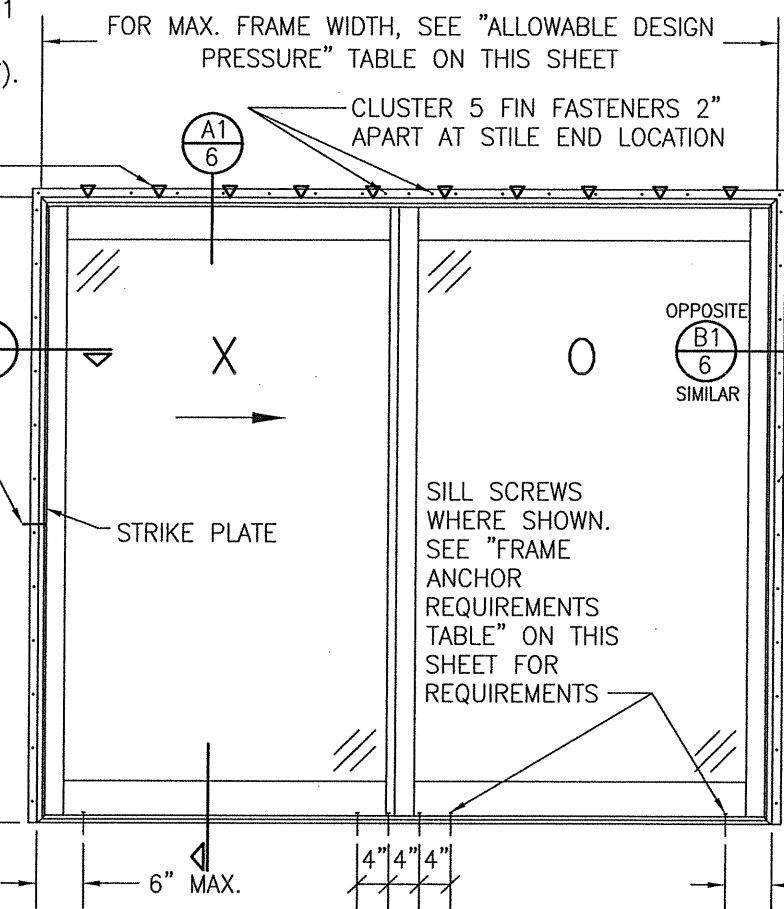
FRAME ANCHOR REQUIREMENTS TABLE

OPENING TYPE (SUBSTRATE)	FRAME/CLIP/NAIL FIN TO OPENING FASTENER TYPE	MINIMUM EMBED	MINIMUM EDGE DIST.
FRAME/SILL SCREWS			
MIN. 2X4 WOOD FRAME OR BUCK (MIN. GR. 3 & G=0.55)	NO. 10 SMS OR WOOD SCREW	1 1/4"	3/4"
MIN. 18 GA. 33 KSI METAL STUD	NO. 10 GR. 5 SELF TAP/DRILL SCREW	FULL	1/2"
MIN. 1/8" THK A36 STEEL	NO. 10 GR. 5 SELF TAP/DRILL SCREW	FULL	1/2"
MIN. 1/8" THK 6063-T5 ALUM.	NO. 10 GR. 5 SELF TAP/DRILL SCREW	FULL	1/2"
C-90 CMU/2500 PSI CONCRETE	(1) 1/4" CONCRETE SCREW	1 1/4"	2"
(2) INSTALLATION CLIP SCREWS (STANDARD BENT CONDITION)			
MIN. 2X4 WOOD FRAME OR BUCK (MIN. GR. 3 & G=0.55)	NO. 8 SMS OR WOOD SCREW	1 3/8"	(2) N/A
MIN. 1/8" THK A36 STEEL	NO. 8 GR. 5 SELF TAP/DRILL SCREW	FULL	(2) N/A
MIN. 1/8" THK 6063-T5 ALUM.	NO. 8 GR. 5 SELF TAP/DRILL SCREW	FULL	(2) N/A
INSTALLATION CLIP SCREWS (ALTERNATE STRAIGHT CONDITION)			
MIN. 2X6 WOOD FRAME OR BUCK (MIN. GR. 3 & G=0.55)	NO. 8 SMS OR WOOD SCREW	1 3/8"	3/4"
MIN. 18 GA. 33 KSI METAL STUD	NO. 8 GR. 5 SELF TAP/DRILL SCREW	FULL	1/2"
MIN. 1/8" THK A36 STEEL	NO. 8 GR. 5 SELF TAP/DRILL SCREW	FULL	1/2"
MIN. 1/8" THK 6063-T5 ALUM.	NO. 8 GR. 5 SELF TAP/DRILL SCREW	FULL	1/2"
(3) NAILING FIN FASTENERS			
MIN. 2X WOOD FRAME OR BUCK (MIN. GR. 3 & G=0.55)	NO. 8 SMS SCREW	1 1/4"	1/2"
MIN. 2X WOOD FRAME OR BUCK (MIN. GR. 3 & G=0.55)	11 GA. ROOFING NAIL	1 3/8"	1/2"
MIN. 1/8" THK A36 STEEL	NO. 8 GR. 5 SELF TAP/DRILL SCREW	FULL	1/2"
MIN. 1/8" THK 6063-T5 ALUM.	NO. 8 GR. 5 SELF TAP/DRILL SCREW	FULL	1/2"
STRIKE SCREWS			
MIN. 2X WOOD FRAME OR BUCK (MIN. GR. 3 & G=0.55)	NO. 8 SMS OR WOOD SCREW	1 1/4"	3/4"
MIN. 18 GA. 33 KSI METAL STUD	NO. 8 GR. 5 SELF TAP/DRILL SCREW	FULL	1/2"
MIN. 1/8" THK A36 STEEL	NO. 8 GR. 5 SELF TAP/DRILL SCREW	FULL	1/2"
MIN. 1/8" THK 6063-T5 ALUM.	NO. 8 GR. 5 SELF TAP/DRILL SCREW	FULL	1/2"
C-90 CMU/2500 PSI CONCRETE	(1) 3/16" CONCRETE SCREW	1 1/4"	2"

- CONCRETE SCREWS SHALL BE ELCO ULTRACONS (C.S.), ELCO CRETE-FLEX (S.S.), ITW RAMSET/RED HEAD TAPCONS (C.S. OR S.S.) OR HILTI KWIK-CON II (C.S. OR S.S.).
- STANDARD BENT CLIP INSTALLATION SCREWS SHALL BE POSITIONED WITHIN 1/4" OF THE BUCK/SUBSTRATE EDGE AND, IF INTO WOOD, ANGLED 20 TO 30 DEGREES INTO THE BUCK.
- WHEN SCREWS ARE USED WITH THE NAIL FIN, THEY MUST BE A WAFFLE HEAD SCREW OR HAVE A FLAT WASHER AT THE SCREW HEAD.

FOR MAX. FRAME HEIGHT, SEE "ALLOWABLE DESIGN PRESSURE" TABLE ON THIS SHEET

STRIKE SCREW INTO SUBSTRATE (1 PER STRIKE). SEE "FRAME ANCHOR REQUIREMENTS TABLE" ON THIS SHEET FOR SCREW REQUIREMENTS.



**EXTERIOR ELEVATION:
 2-PANEL SLIDING DOOR**
 SCALE: 1/2" = 1'-0"
 (NAIL FIN MOUNT CONDITION)

ALLOWABLE DESIGN PRESSURE (2-PANEL SLIDING DOOR)		
MAX. FRAME WIDTH (IN.)	MAX. FRAME HEIGHT (IN.)	ALLOWABLE PRESSURE (+/- PSF)
95 1/4	95 1/2	30
95 1/4	81 1/2	45
71 1/4	95 1/2	50

EDGE DISTANCE MAY BE DECREASED TO 1/2" IF SCREWS ARE ANGLED 15 TO 20 DEGREES AWAY FROM THE EDGE.

THIS DOOR REQUIRES FRAME SCREWS OR INSTALLATION CLIPS AT THE HEAD PER NOTE WITH ELEVATION.

INSTALLATION EVALUATION IS BASED ON APPLICABLE ANCHOR STANDARDS AND/OR INFORMATION & RESULTS FROM APPLICABLE TEST REPORTS. THE BUILDING CODE VERSION CONSIDERED WITH THE EVALUATION WAS THAT IN FORCE AT THE TIME OF THE EVALUATION. IN THE EVENT OF CODE VERSION CHANGES/UPDATES OR IN THE EVENT THAT NEW OR ADDITIONAL TESTING IS COMPLETED ON THE REFERENCED PRODUCT, PRIOR TO STATING CODE COMPLIANCE, THE MANUFACTURER SHALL CONFIRM WITH THE INSTALLATION EVALUATION ENGINEER OF RECORD THAT THE INSTALLATIONS SPECIFIED HERE-IN ARE CURRENT WITH THE THEN CURRENT TESTING, CODE AND APPLICABLE STANDARDS.

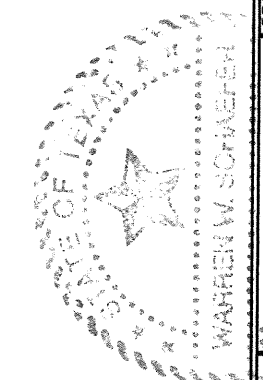
CONDITIONS SHOWN ON THIS DRAWING ARE GOVERNED BY INSTALLATION REQUIREMENTS ONLY. THE GOVERNING CONDITIONS ON ANY SPECIFIC PRODUCT SHALL BE THE LESSER OF THOSE SPECIFIED IN THE PRODUCTS TDI APPROVAL OR THAT SHOWN IN THESE DRAWINGS.

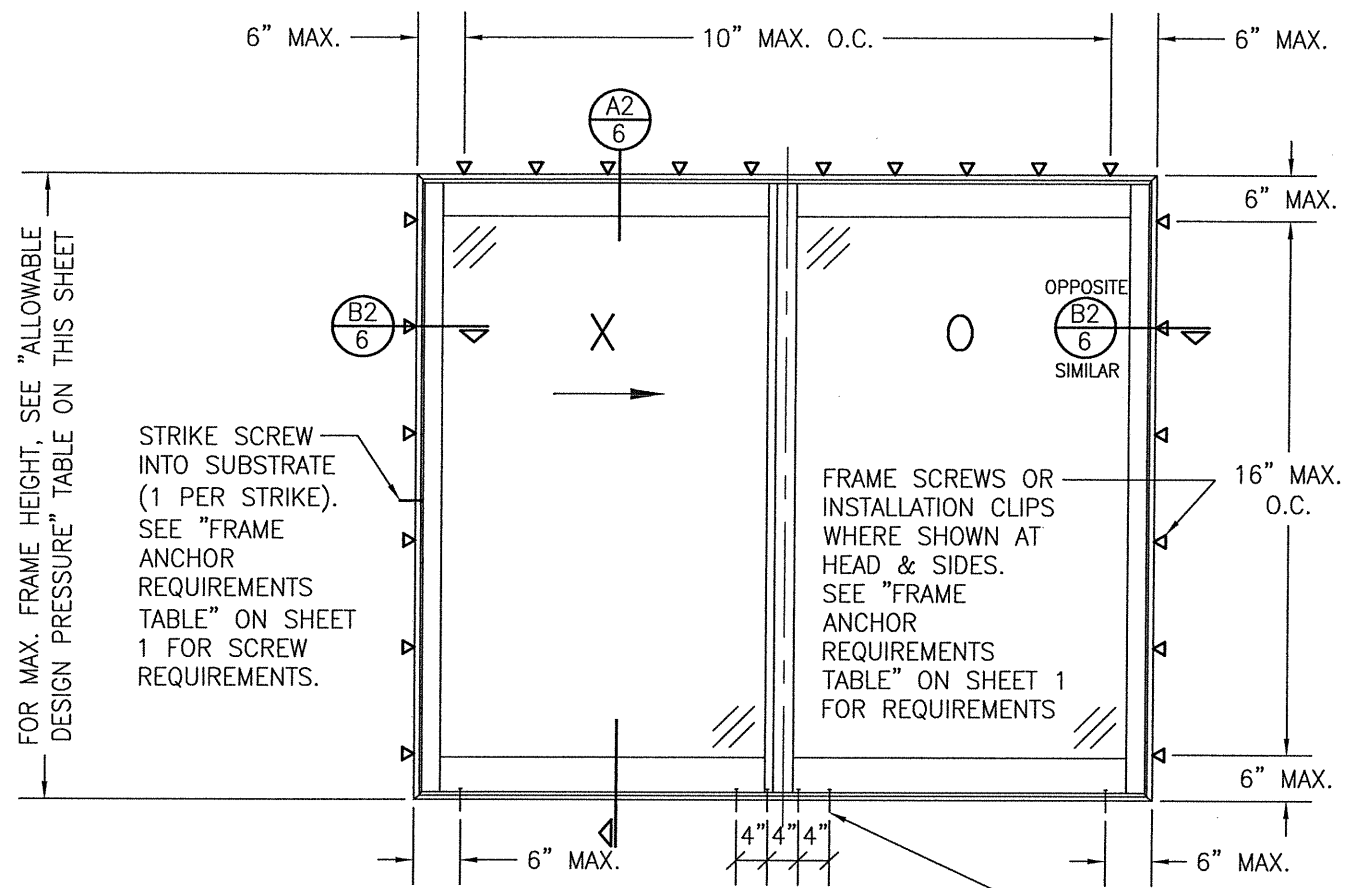
ALTERNATE ANCHOR/SUBSTRATE EVALUATION NOTE:
 ALL ALTERNATE ANCHORS IN THEIR SPECIFIED SUBSTRATES HAVE BEEN ANALYZED IN ACCORDANCE WITH THEIR APPLICABLE STANDARD(S) AND ARE FOUND TO BE EQUIVALENT TO OR STRONGER THAN THE ANCHOR(S) USED IN TESTING WITH THIS PRODUCT.

FIN FASTENER WITHIN 4" OF CORNERS & 5" TO 7" O.C. SEE "FRAME ANCHOR REQUIREMENTS TABLE" ON THIS SHEET FOR REQUIREMENTS.

**EXTERIOR ELEVATION:
 SINGLE FIXED PANEL DOOR**
 SCALE: 1/2" = 1'-0"
 (NAIL FIN MOUNT CONDITION)

ALLOWABLE DESIGN PRESSURE (FIXED PANEL UNITS ONLY)
+50/-50 PSF

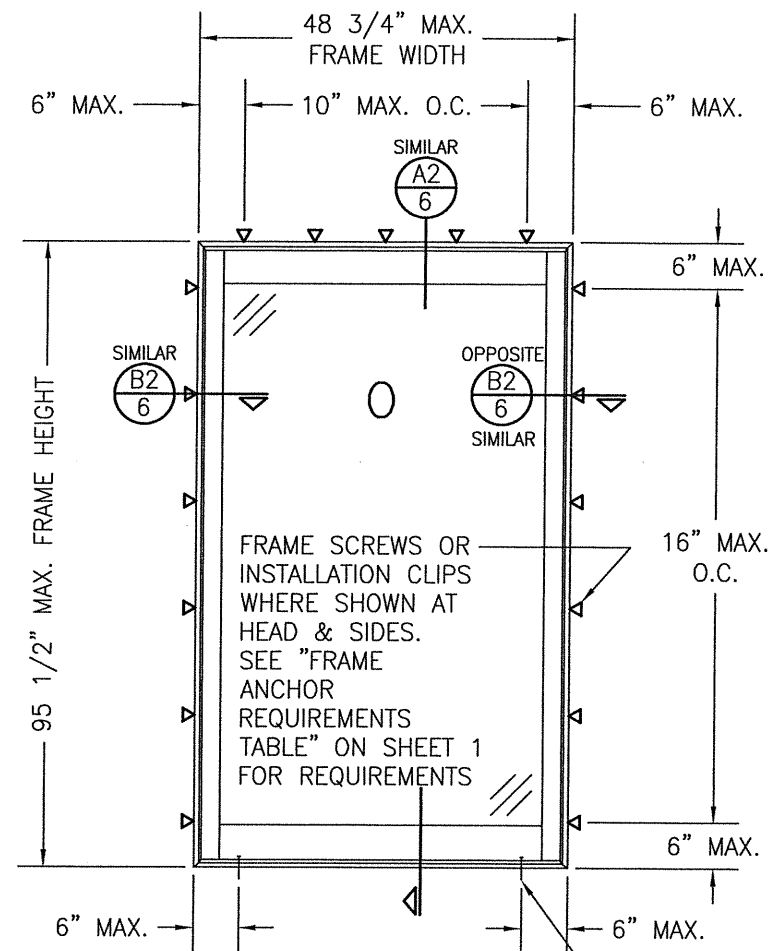




**EXTERIOR ELEVATION:
2-PANEL SLIDING DOOR**

SCALE: 1/2" = 1'-0"
(FRAME SCREW OR CLIP MOUNT CONDITION)

ALLOWABLE DESIGN PRESSURE (2-PANEL SLIDING DOOR)		
MAX. FRAME WIDTH (IN.)	MAX. FRAME HEIGHT (IN.)	ALLOWABLE PRESSURE (+/- PSF)
95 1/4	95 1/2	30
95 1/4	81 1/2	45
71 1/4	95 1/2	50



**EXTERIOR ELEVATION:
SINGLE FIXED PANEL DOOR**

SCALE: 1/2" = 1'-0"
(FRAME SCREW OR CLIP MOUNT CONDITION)

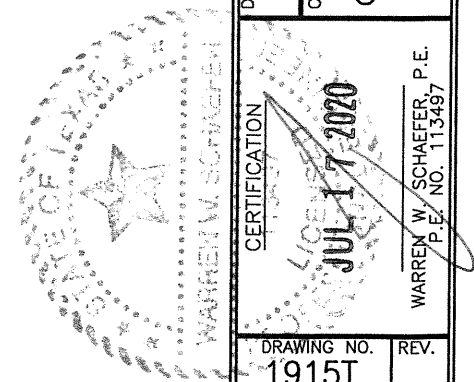
ALLOWABLE DESIGN PRESSURE (FIXED PANEL UNITS ONLY)
+/-50 PSF

DRAWN BY: W.W.S.	CHECKED BY: W.W.S.
PLOT: 1=24	DATE: 05/11/16
NO.	REVISION DESCRIPTION
BY	DATE

DRAWING TITLE: LIFESTYLE MODEL 4 NON-IMPACT CLAD SLIDING DOOR

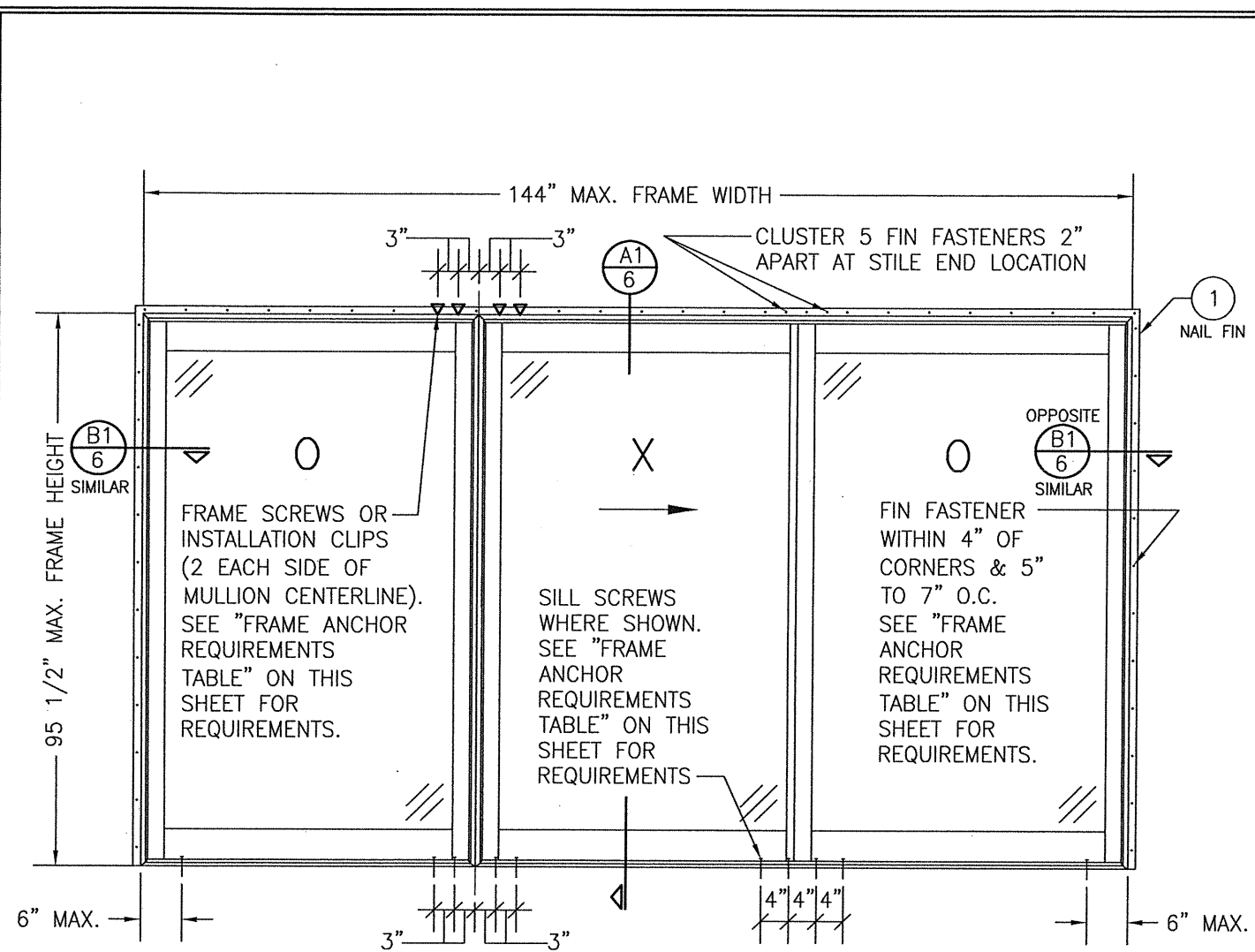
JOB INFORMATION:
Pella Corporation
102 MAIN STREET
PELLA, IA 50219
641-621-1000

CONSULTANTS:
W. W. SCHAEFER ENGINEERING & CONSULTING, P.A. (REG. NO. F-14980)
7480 150TH COURT NORTH
PALM BEACH GARDENS, FL 33418
PHONE: 561-744-3424



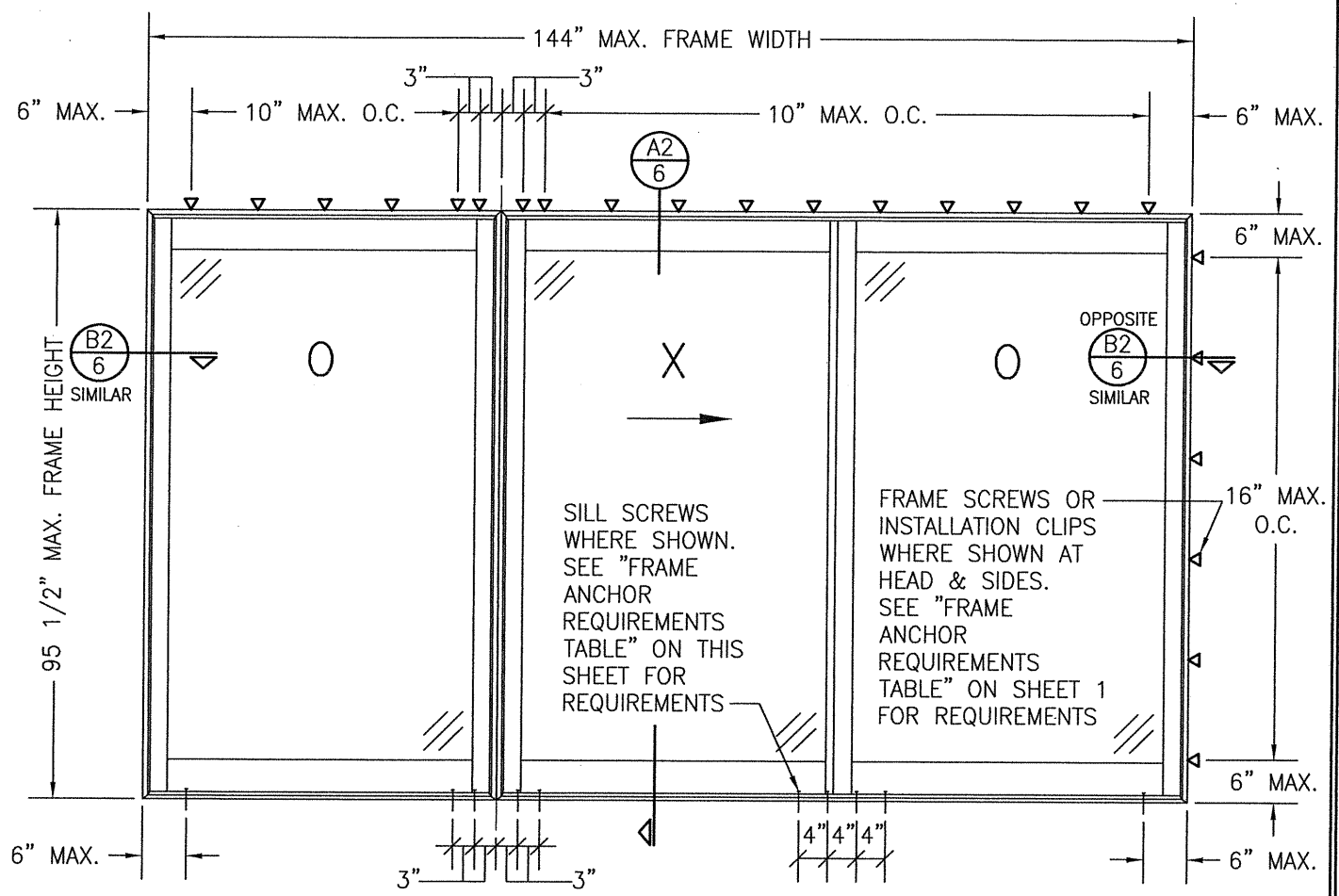
CERTIFICATION
WARREN W. SCHAEFER
P.E. NO. 113497
JUL 17 2020

DRAWING NO. 1915T	REV.
SHEET NO. 2	OF 7



EXTERIOR ELEVATION:
2-PANEL SLIDING DOOR WITH SIDELIGHT
 SCALE: 1/2" = 1'-0"
 (NAIL FIN MOUNT CONDITION)

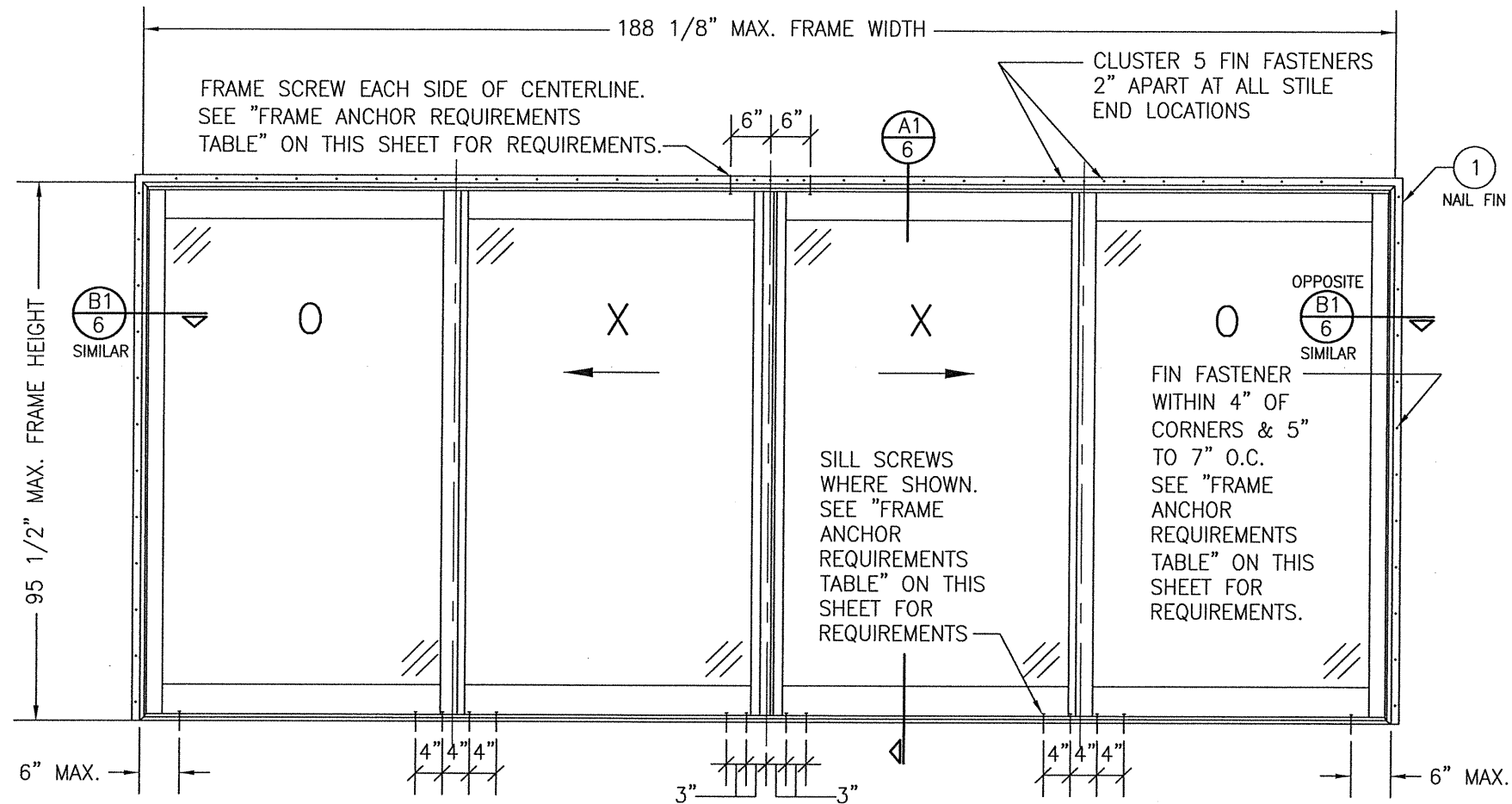
ALLOWABLE DESIGN PRESSURE (TWO PANEL DOOR WITH SIDELIGHT)
+/-30 PSF



EXTERIOR ELEVATION:
2-PANEL SLIDING DOOR WITH SIDELIGHT
 SCALE: 1/2" = 1'-0"
 (FRAME SCREW OR CLIP MOUNT CONDITION)

ALLOWABLE DESIGN PRESSURE (TWO PANEL DOOR WITH SIDELIGHT)
+/-30 PSF

DRAWN BY: W.W.S.	CHECKED BY: W.W.S.
PLOT: 1=24	DATE: 05/11/16
DATE	BY
REVISION DESCRIPTION	NO.
DRAWING TITLE LIFESTYLE MODEL 4 NON-IMPACT CLAD SLIDING DOOR	
JOB INFORMATION: PELLA CORPORATION 102 MAIN STREET PELLA, IA 50219 641-621-1000	
CONSULTANTS W. W. SCHAEFER ENGINEERING & CONSULTING, P.A. (REG. NO. F-14980) 7480 150TH COURT NORTH PALM BEACH GARDENS, FL 33418 PHONE: 561-744-3424	
CERTIFICATION JUL 17 2020 WARREN W. SCHAEFER, P.E. P.E. NO. 113497	
DRAWING NO. 1915T	REV.
SHEET NO. 3	OF 7




**EXTERIOR ELEVATION:
4-PANEL SLIDING DOOR**
SCALE: 1/2" = 1'-0"
(NAIL FIN MOUNT CONDITION)

ALLOWABLE DESIGN PRESSURE (4 PANEL DOOR)
+/-25 PSF

DRAWN BY: W.W.S.	CHECKED BY: W.W.S.
PLOT: 1=24	DATE: 05/11/16
NO.	REVISION DESCRIPTION

JOB INFORMATION:
PELLA CORPORATION
 102 MAIN STREET
 PELLA, IA 50219
 641-621-1000

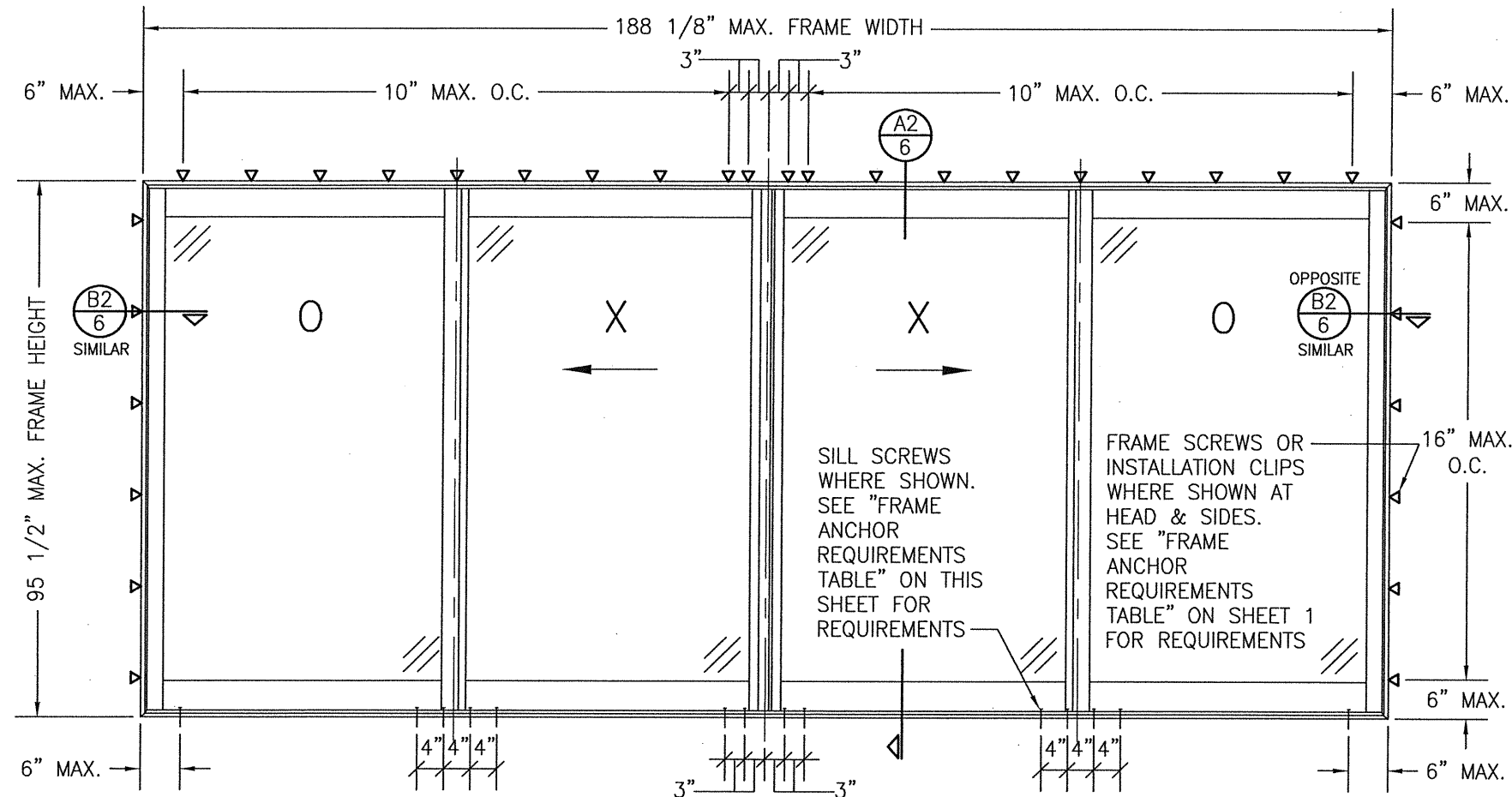


CONSULTANTS
W. W. SCHAEFER ENGINEERING & CONSULTING, P.A. (REG. NO. F-14980)
 7480 150TH COURT NORTH
 PALM BEACH GARDENS, FL 33418
 PHONE: 561-744-3424

CERTIFICATION
 JUL 17 2020
 WARREN W. SCHAEFER, P.E.
 P.E. NO. 113497

DRAWING NO. 1915T	REV.
SHEET NO. 4	OF 7

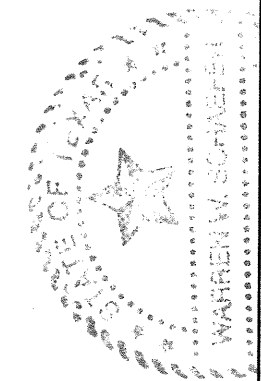


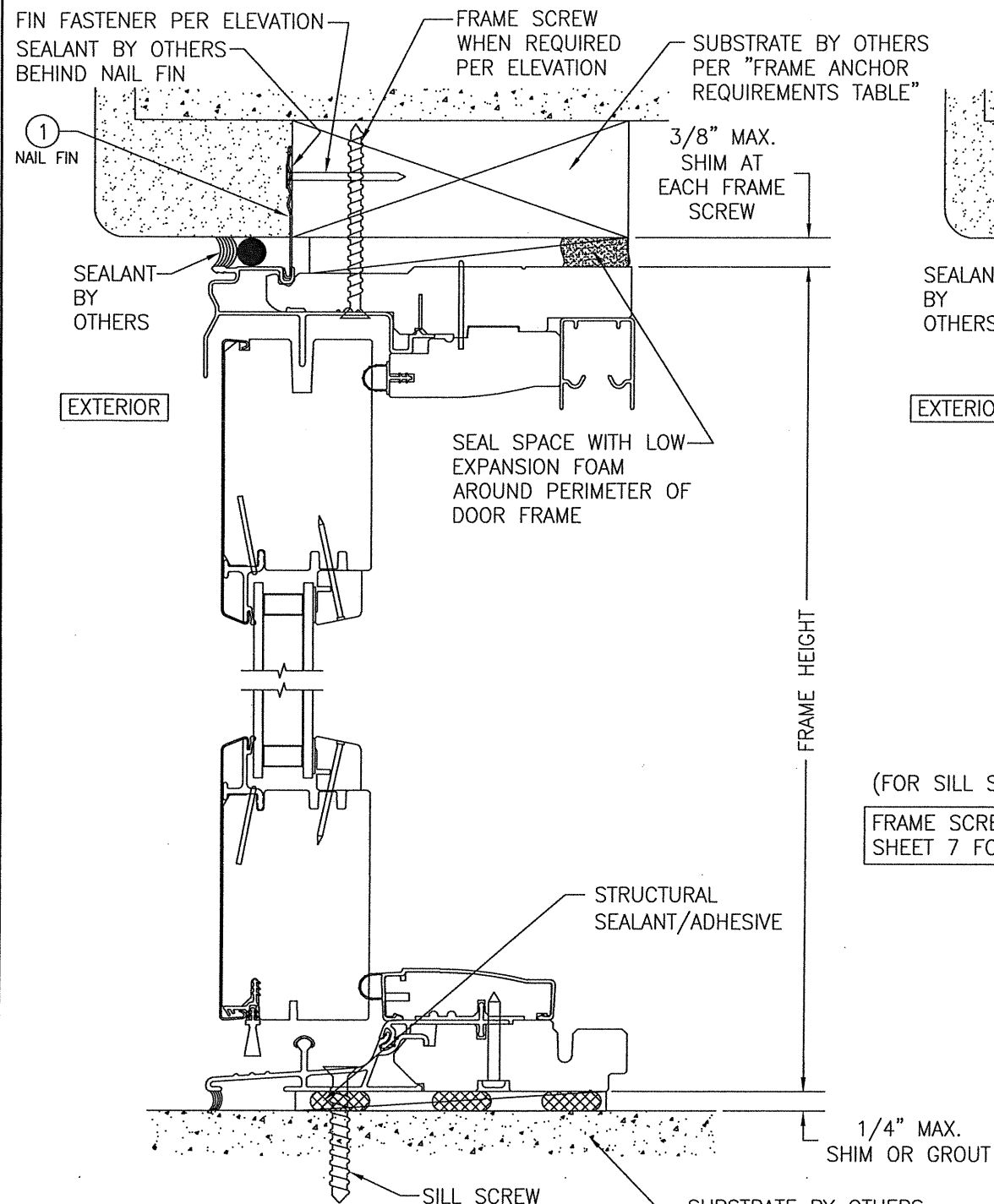


**EXTERIOR ELEVATION:
4-PANEL SLIDING DOOR**
SCALE: 1/2" = 1'-0"
(FRAME SCREW OR CLIP MOUNT CONDITION)

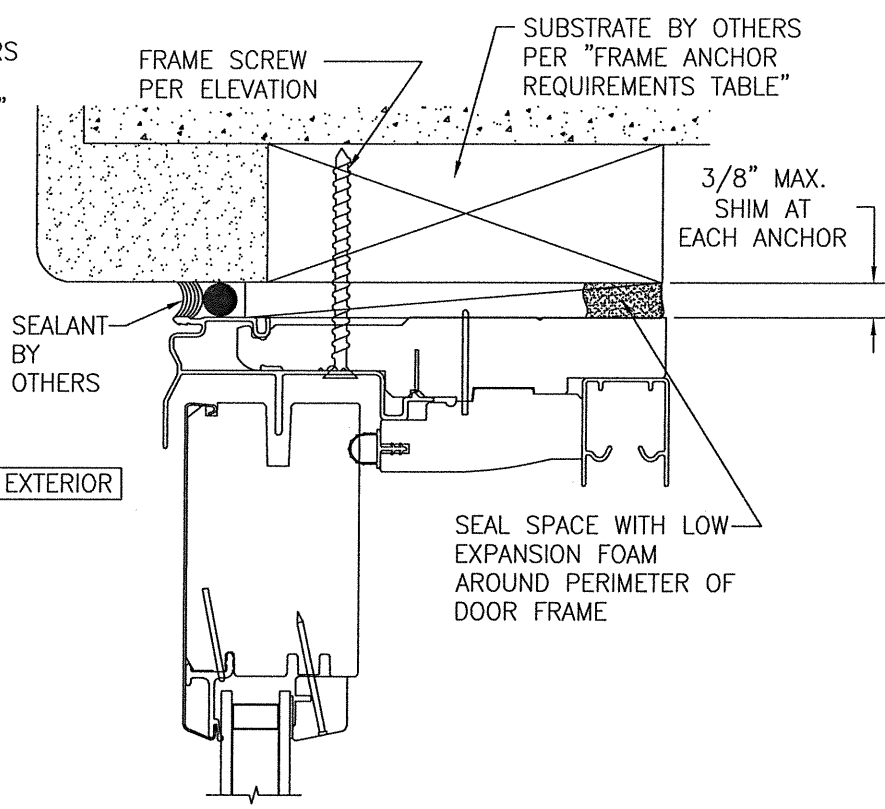
ALLOWABLE DESIGN PRESSURE (4 PANEL DOOR) +/-20 PSF

DRAWN BY: W.W.S.		CHECKED BY: W.W.S.	
PLOT: 1-24		DATE: 05/11/16	
NO.	REVISION DESCRIPTION	BY	DATE
DRAWING TITLE: LIFESTYLE MODEL 4 NON-IMPACT CLAD SLIDING DOOR			
CONSULTANTS: W. W. SCHAEFER ENGINEERING & CONSULTING, P.A. (REG. NO. F-14980) 7480 150TH COURT NORTH PALM BEACH GARDENS, FL 33418 PHONE: 561-744-3424			
JOB INFORMATION: PELLA CORPORATION 102 MAIN STREET PELLA, IA 50219 641-621-1000			
CERTIFICATION: WARREN W. SCHAEFER P.E. NO. 113497 JUL 17 2020			
DRAWING NO. 1915T		REV.	
SHEET NO. 5		OF 7	

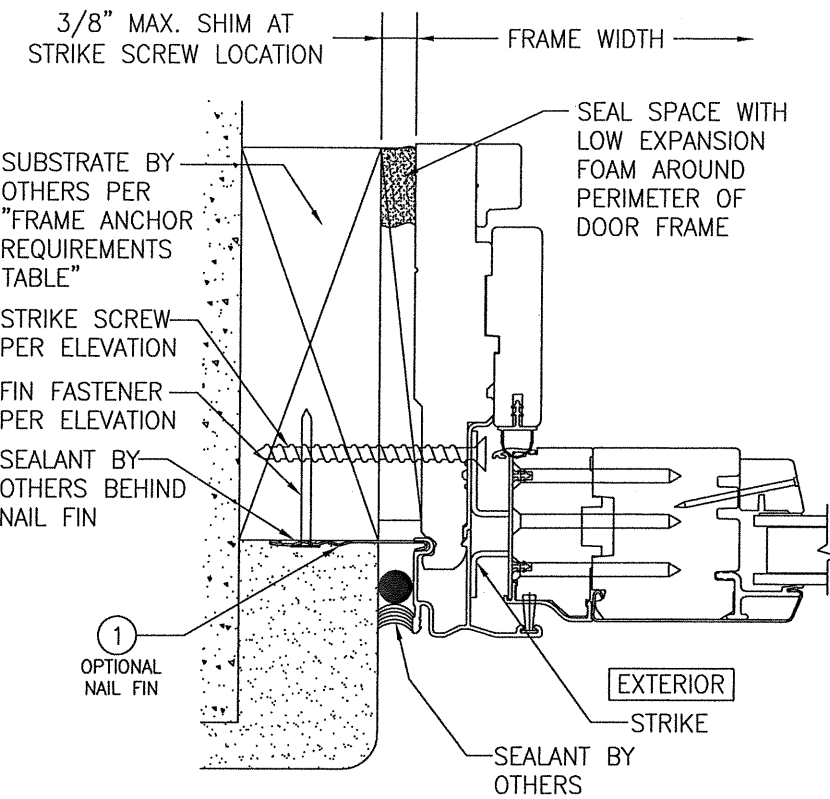




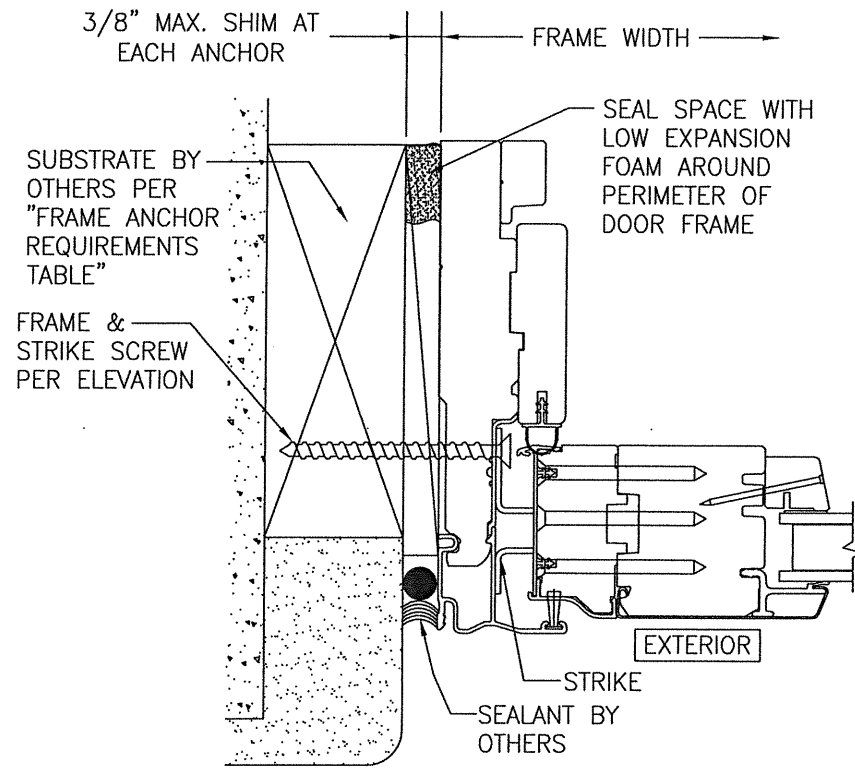
SECTION A1
SCALE: 1/2 FULL
(NAIL FIN MOUNT)



SECTION A2
SCALE: 1/2 FULL
(FOR SILL SECTION NOT SHOWN, SEE SECTION A1/6)
FRAME SCREW MOUNT SHOWN. SEE DETAILS ON SHEET 7 FOR DIRECT MOUNT & CLIP MOUNT DETAILS.



SECTION B1
SCALE: 1/2 FULL
(NAIL FIN MOUNT)



SECTION B2
SCALE: 1/2 FULL
FRAME SCREW MOUNT SHOWN. SEE DETAILS ON SHEET 7 FOR DIRECT MOUNT & CLIP MOUNT DETAILS.

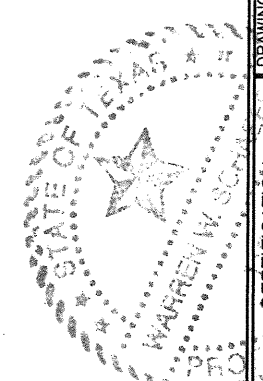
DRAWN BY: W.W.S.	CHECKED BY: W.W.S.
PLOT: 1=2	DATE: 05/11/16
NO.	REVISION DESCRIPTION
BY	DATE

DRAWING TITLE: LIFESTYLE MODEL 4 NON-IMPACT CLAD SLIDING DOOR

PELLA CORPORATION
102 MAIN STREET
PELLA, IA 50219
641-621-1000



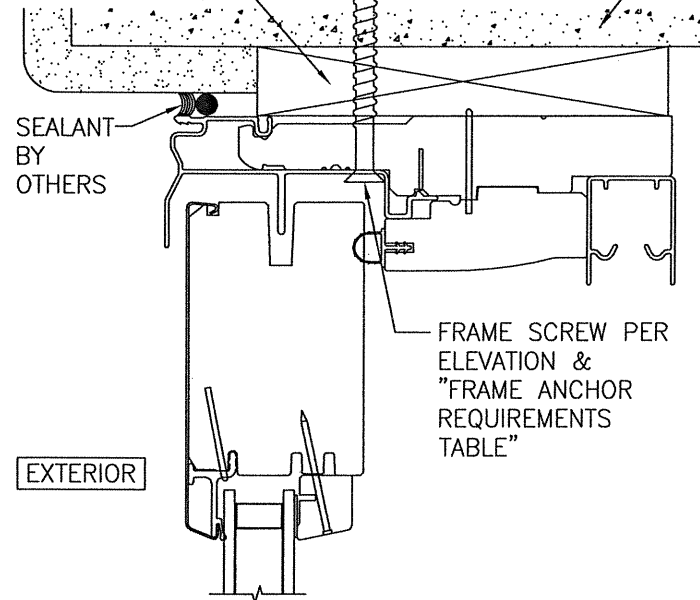
CONSULTANTS
W. W. SCHAEFER ENGINEERING & CONSULTING, P.A. (REG. NO. F-14980)
7480 150TH COURT NORTH
PALM BEACH GARDENS, FL 33418
PHONE: 561-744-3424



CERTIFICATION
JUL 17 2020
WARREN W. SCHAEFER, P.E.
P.E. NO. 113497

CONTINUOUS WOOD MEMBER LESS IN THICKNESS THAN A 2X BUCK TO BE MIN. 3 1/2" DEEP (NOT REQUIRED WHEN SHIM SPACE IS WITHIN ALLOWABLE DIMENSIONS SHOWN IN SECTIONS).

SUBSTRATE BY OTHERS PER "FRAME ANCHOR REQUIREMENTS TABLE"



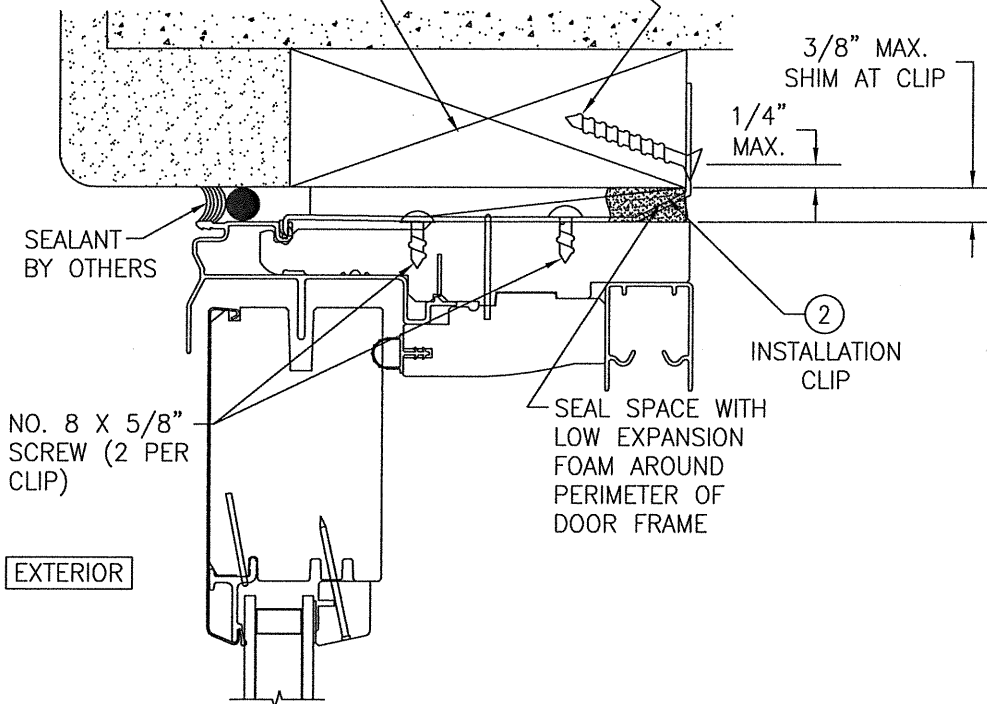
EXTERIOR

OPTIONAL DIRECT MOUNT DETAIL TO SUBSTRATE WITH SPACER

(HEAD SECTION SHOWN; SILL & SIDES ARE INSTALLED THE SAME)
(FOR DETAIL NOT SHOWN, SEE OTHER SECTIONS)

SUBSTRATE BY OTHERS PER "FRAME ANCHOR REQUIREMENTS TABLE"

INSTALLATION CLIP SCREW PER "FRAME ANCHOR REQUIREMENTS TABLE" (2 PER CLIP). ANGLE SCREW 20-30° WHEN INTO WOOD SUBSTRATE.



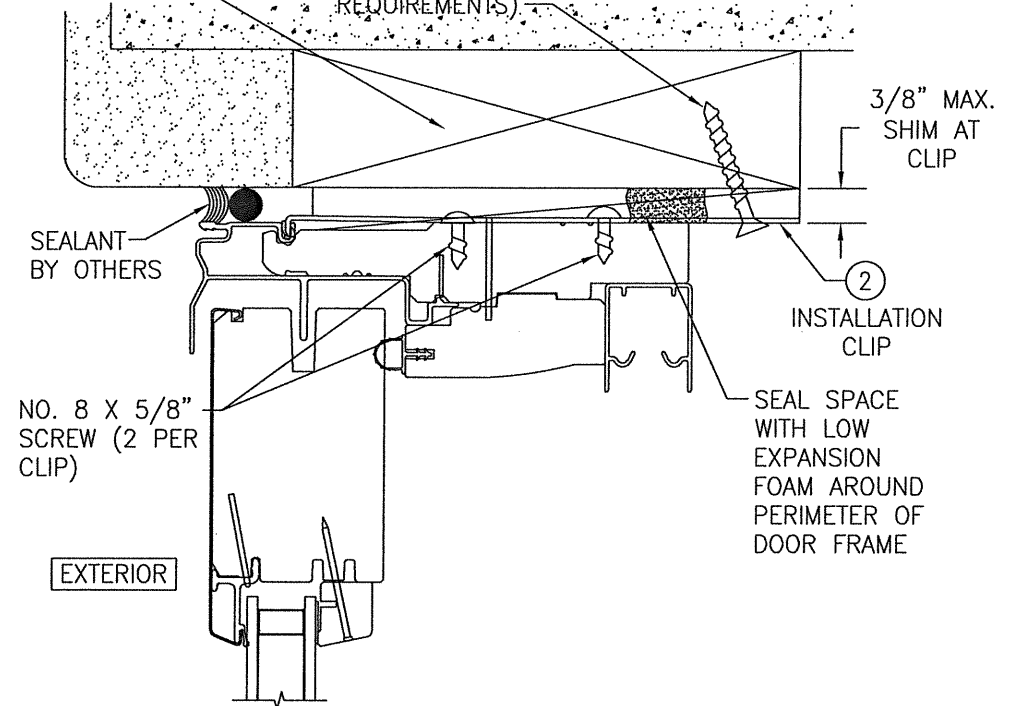
EXTERIOR

STANDARD INSTALLATION CLIP DETAIL (BENT CLIP)

(HEAD SECTION SHOWN; SIDE IS INSTALLED THE SAME)
(FOR DETAIL NOT SHOWN, SEE OTHER SECTIONS)
(INSTALLATION CLIPS ARE NOT APPLICABLE AT THE SILL)

SUBSTRATE BY OTHERS PER "FRAME ANCHOR REQUIREMENTS TABLE"

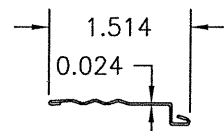
INSTALLATION CLIP SCREW PER "FRAME ANCHOR REQUIREMENTS TABLE" (2 PER CLIP ANGLED 15 TO 20 DEGREES IF NECESSARY WHEN INTO WOOD TO MEET EDGE DISTANCE REQUIREMENTS)



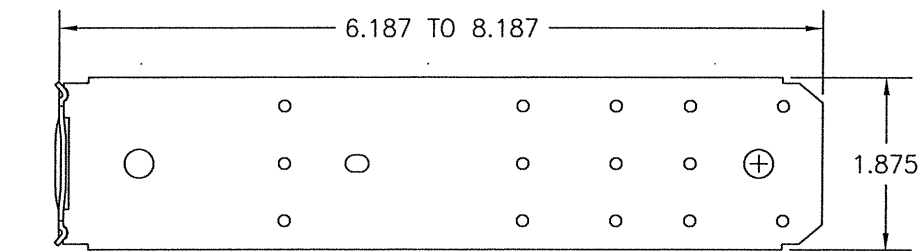
EXTERIOR

ALTERNATE INSTALLATION CLIP DETAIL (STRAIGHT CLIP)

(SIDE SECTION SHOWN; HEAD IS INSTALLED THE SAME)
(FOR DETAIL NOT SHOWN, SEE OTHER SECTIONS)
(INSTALLATION CLIPS ARE NOT APPLICABLE AT THE SILL)



① **NAIL FIN**
3003-H14 ALUMINUM



BENT PORTION OF CLIP MAY BE SNIPPED OFF IF REQ'D FOR PLACEMENT TO DOOR FRAME.

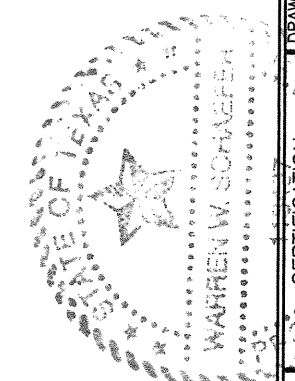
② **FRAME INSTALLATION CLIP**
(50 KSI STEEL)

DRAWN BY: W.W.S.	CHECKED BY: W.W.S.
PLOT: 1=2	DATE: 05/11/16
NO.	REVISION DESCRIPTION
DATE	BY

LIFESTYLE MODEL 4 NON-IMPACT GLAD SLIDING DOOR

PELLA CORPORATION
102 MAIN STREET
PELLA, IA 50219
641-621-1000

W. W. SCHAEFER ENGINEERING & CONSULTING, P.A. (REG. NO. F-14980)
7480 150TH COURT NORTH
PALM BEACH GARDENS, FL 33418
PHONE: 561-744-3424



CERTIFICATION
LICENSE NO. 113497
JUL 17 2020
WARREN W. SCHAEFER, P.E.
P.E. NO. 113497

DRAWING NO. 1915T
SHEET NO. 7 OF 7