

### FLUSH GLAZED FIBERGLASS DOOR

#### INSWING/OUTSWING

#### "NON-IMPACT"

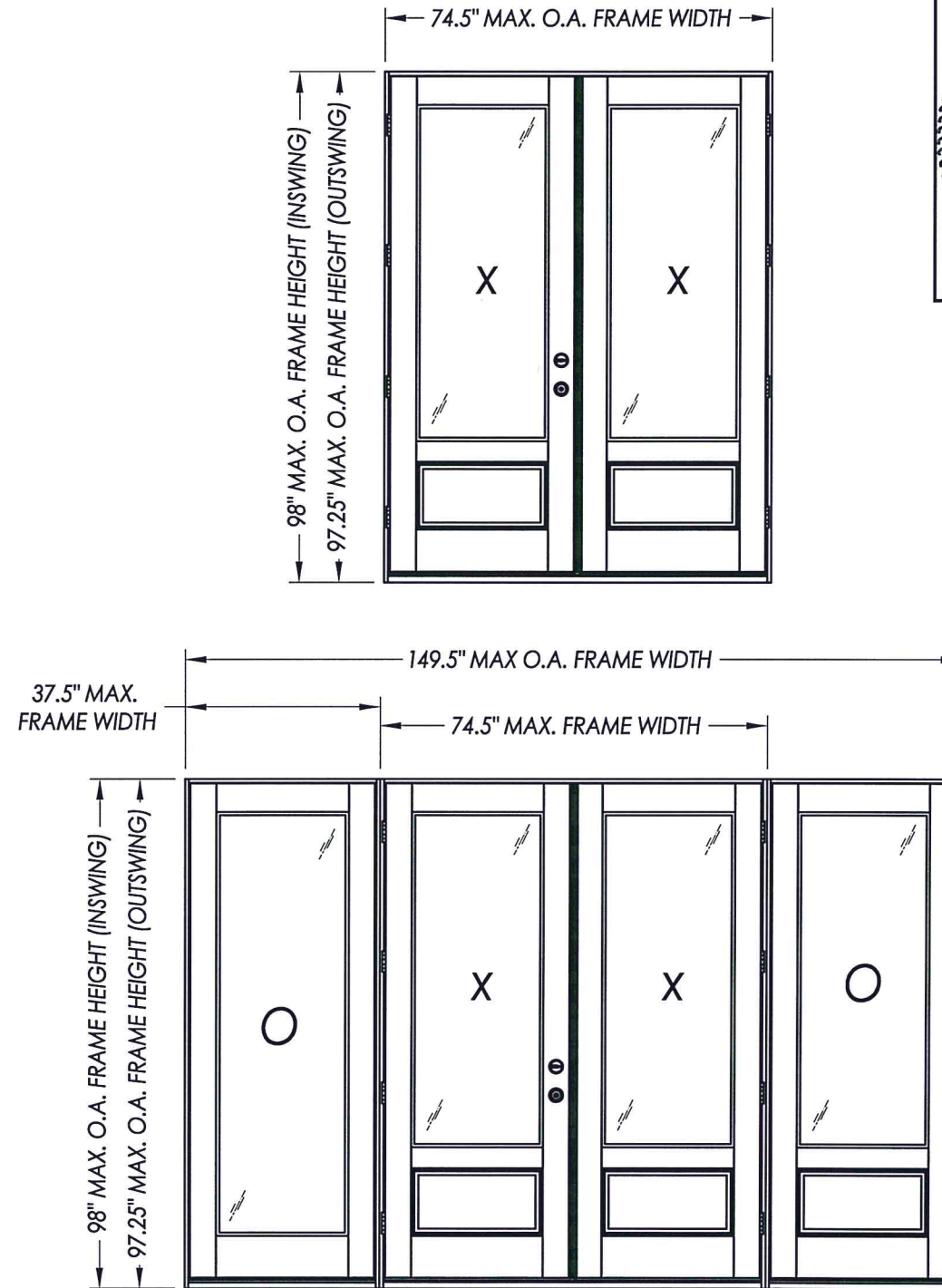
#### EVALUATED FOR USE IN THE STATE OF TEXAS

The Fiberglass Door described herein complies with the 2006 International Residential Code (IRC), Sections R301 & R613 and the 2006 International Building Code (IBC), Sections 1405.12, 1609, 1714.5, 2403 and 2404 (including Texas revisions) subject to the following conditions:

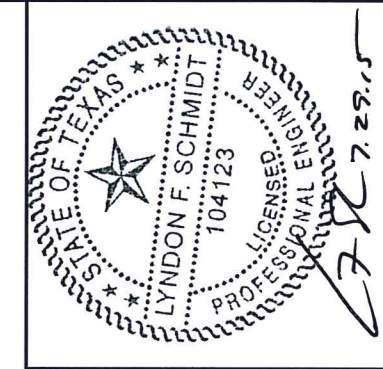
1. Anchors shall be as listed and spaced as shown in the details. Anchor embedment to base material shall be beyond wall dressing or stucco.
2. When used in areas requiring wind-borne debris protection this product is required to be protected with an impact resistant covering that complies with Section R301.2.1.2 of the IRC and Section 1609.1.2 of the IBC.
3. Allowable design pressure requirements must be equal to or less than the design pressure rating shown in the design pressure chart, sheet 1 of this drawing.
4. Conditions not covered by this drawing are subject to further engineering analysis.

#### TABLE OF CONTENTS

SHEET #	DESCRIPTION
1	Table of contents, design pressure and general notes
2	Door/Sidelite panel & glazing details
3	Sidelite panel & glazing details
4	Elevatons
5	Horizontal cross sections
6	Vertical cross sections
7	Frame anchoring & hardware details
8	Bill of materials and components



CONFIGURATION	MAX FRAME DIMENSION	DESIGN PRESSURE (PSF) INSWING		DESIGN PRESSURE (PSF) OUTSWING	
		POSITIVE	NEGATIVE	POSITIVE	NEGATIVE
XX	74.5" X 98.0"	+35.0	-35.0	+35.0	-35.0
OXXO	149.5" X 98.0"	+35.0	-35.0	+35.0	-35.0



Documents Prepared By: Lyndon F. Schmidt, P.E.  
TEXAS P.E. #104123

**RW** BUILDING CONSULTANTS, INC.  
P.O. Box 230 Valrico FL 33595  
Phone No.: 813.659.9197

TEXAS BOARD OF PROFESSIONAL ENGINEERS  
CERTIFICATE OF REGISTRATION # F-11852

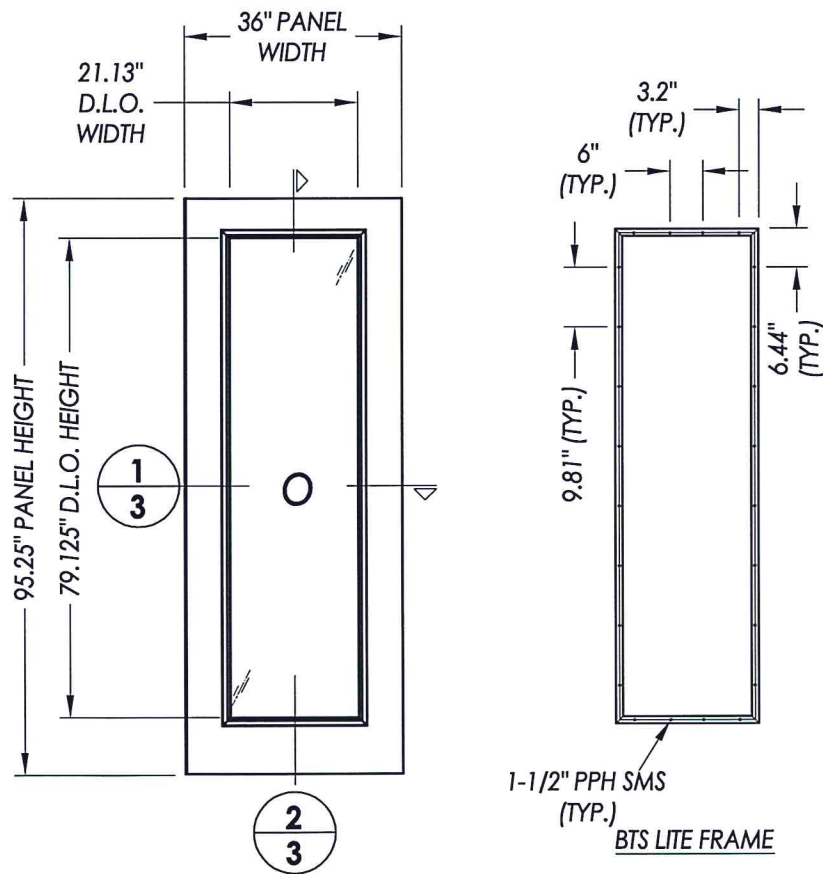
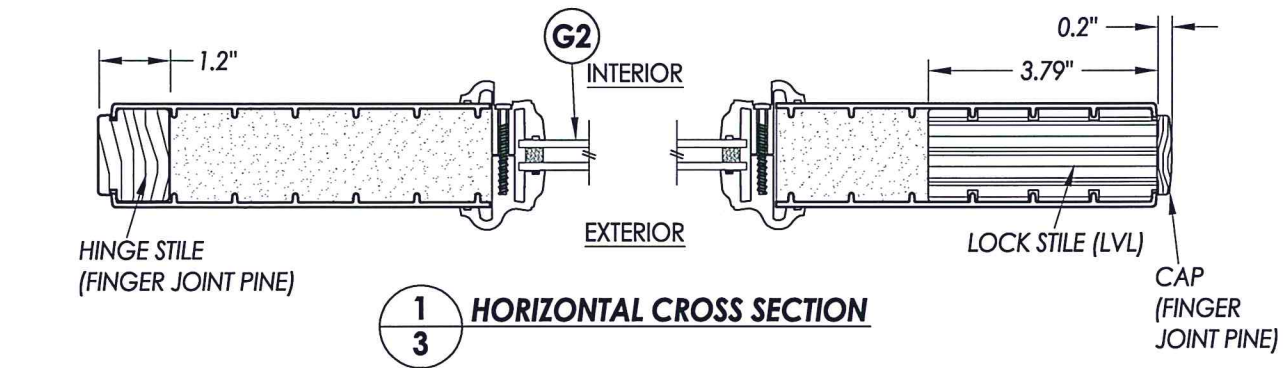
PRODUCT: THERMA-TRU  
FLUSH GLAZED DOOR

PART OR ASSEMBLY:  
TYPICAL ELEVATION, DESIGN PRESSURES & GENERAL NOTES

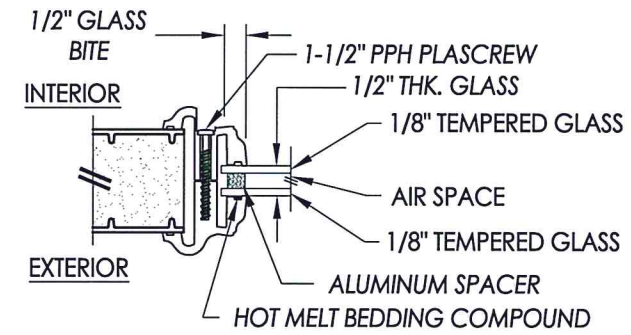
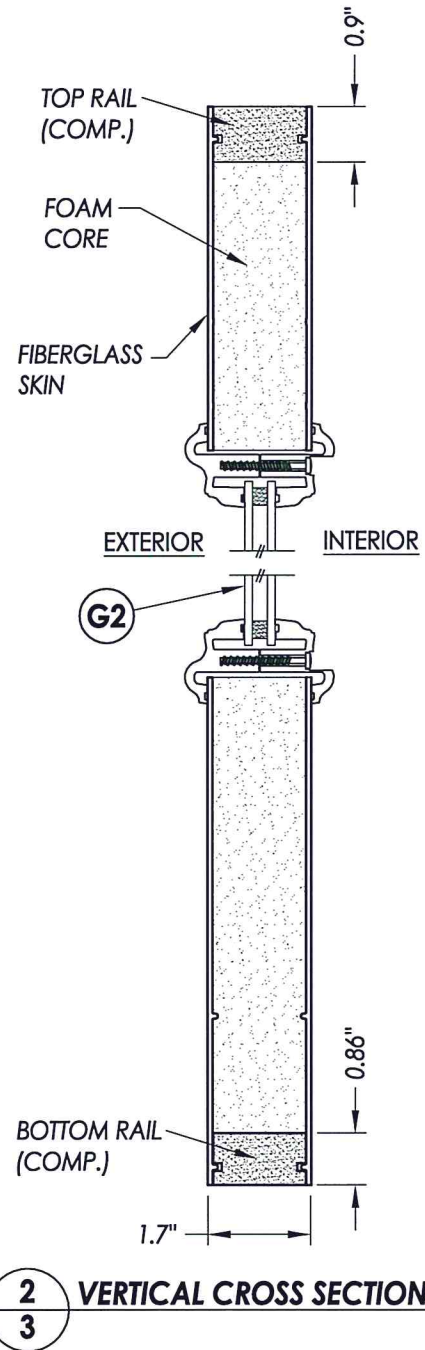
NO.	DATE	BY	REVISIONS

DATE: 7/28/15  
SCALE: N.T.S.  
DWG. BY: JK  
CHK. BY: LFS  
DRAWING NO.: TX-4559  
SHEET 1 OF 8





FIBERGLASS SKIN: 0.07" THICKNESS  
FOAM CORE: POLYURETHANE



Documents Prepared By: Lyndon F. Schmidt, P.E.  
TEXAS P.E. #104123

**RW** BUILDING CONSULTANTS, INC.  
P.O. Box 230 Valrico FL 33595  
Phone No.: 813.659.9197

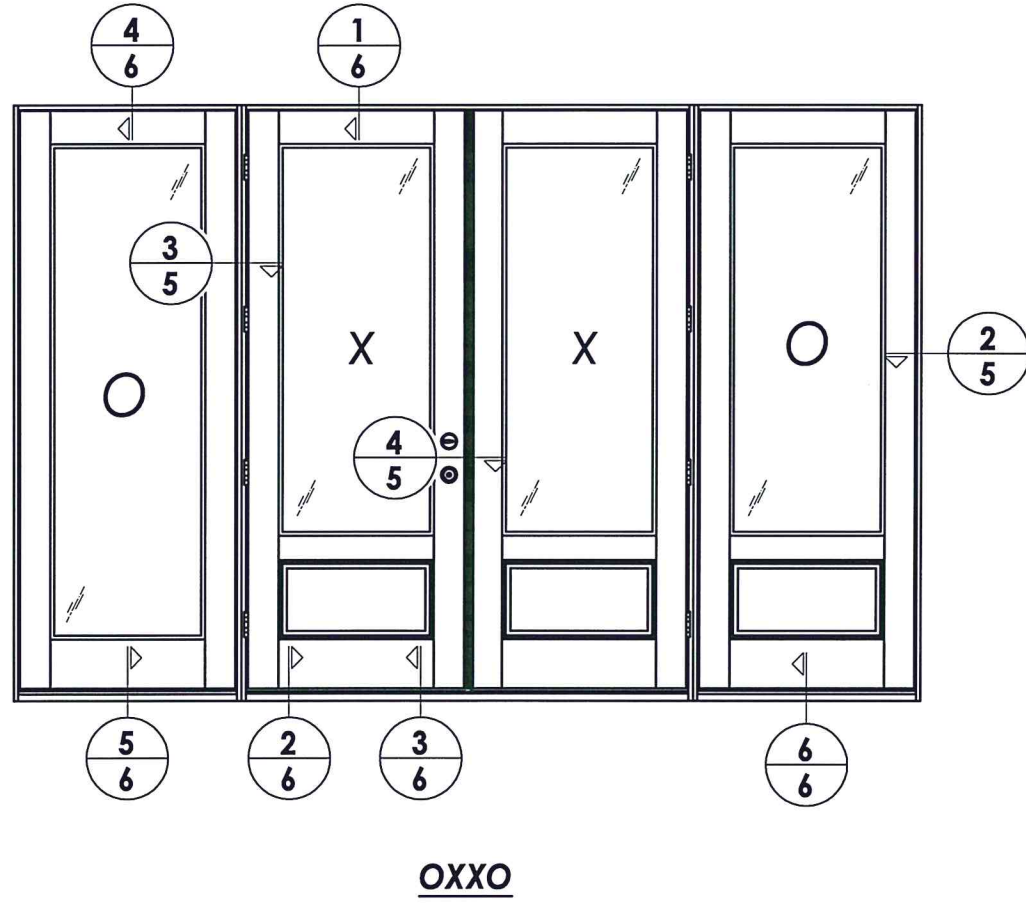
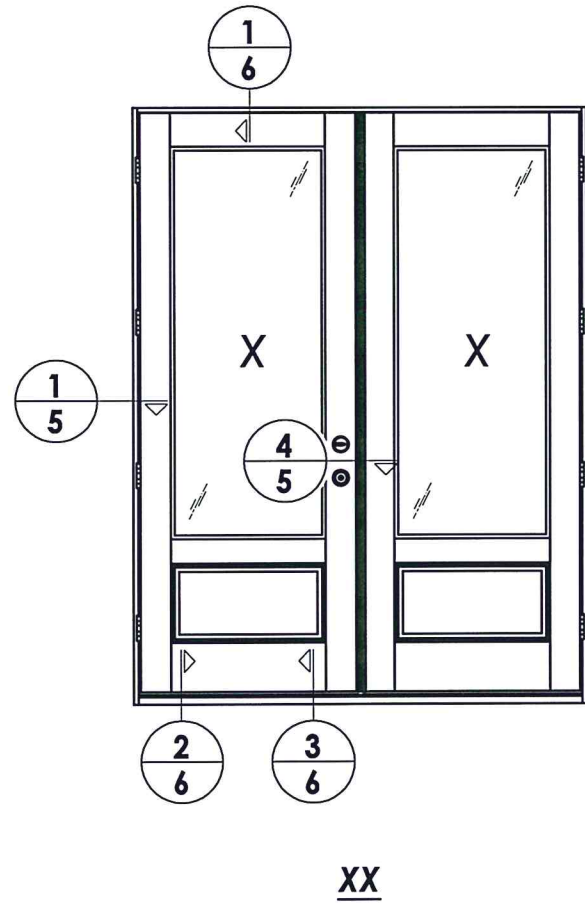
TEXAS BOARD OF PROFESSIONAL ENGINEERS  
CERTIFICATE OF REGISTRATION # F-11852

PRODUCT: THERMA-TRU  
FLUSH GLAZED DOOR

PART OR ASSEMBLY: SIDELITE PANEL &  
GLAZING DETAILS

NO.	DATE	BY	REVISIONS

DATE: 7/28/15  
SCALE: N.T.S.  
DWG. BY: JK  
CHK. BY: LFS  
DRAWING NO.: TX-4559  
SHEET 3 OF 8



*LFS* 7-23-15

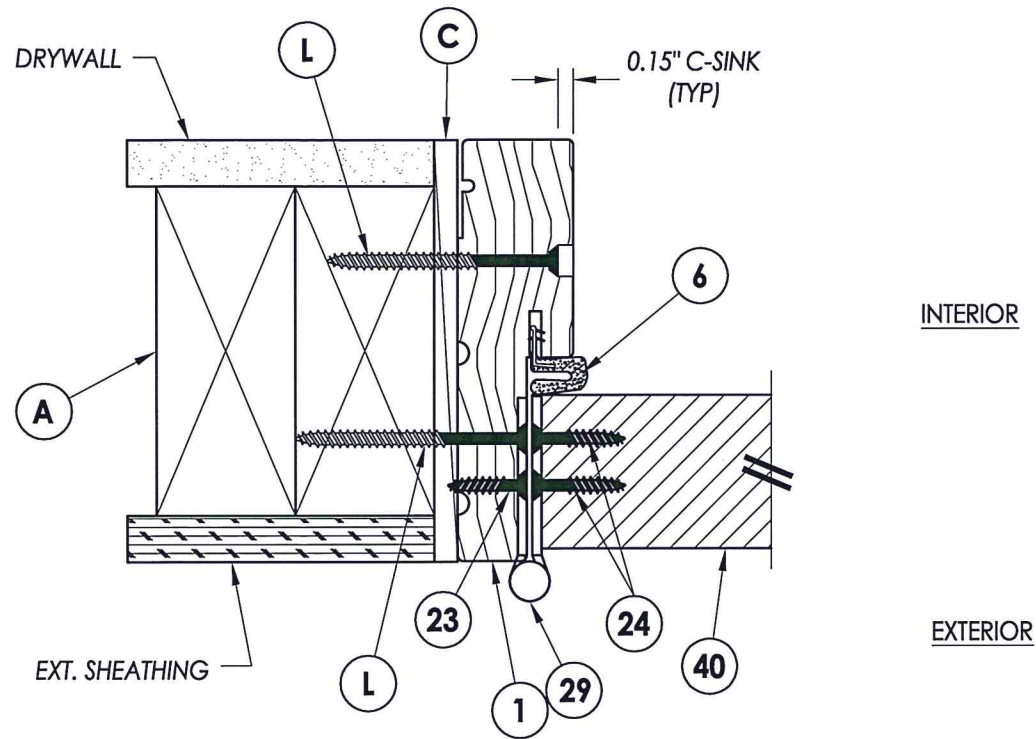
Documents Prepared By: Lyndon F. Schmidt, P.E.  
 TEXAS P.E. #104123  
  
*RW* BUILDING CONSULTANTS, INC.  
 P.O. Box 230 Valrico FL 33595  
 Phone No.: 813.659.9197  
 TEXAS BOARD OF PROFESSIONAL ENGINEERS  
 CERTIFICATE OF REGISTRATION # F-11852

PRODUCT: THERMA-TRU  
 FLUSH GLAZED DOOR  
 PART OR ASSEMBLY:  
 ELEVATIONS

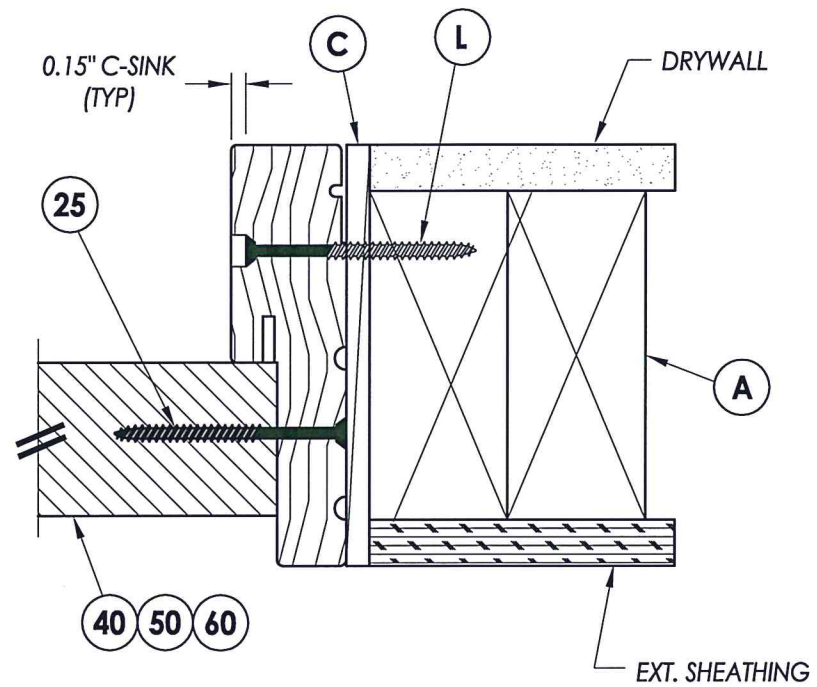
NO.	DATE	REVISIONS	BY

DATE: 7/28/15  
 SCALE: N.T.S.  
 DWG. BY: JK  
 CHK. BY: LFS  
 DRAWING NO.:  
 TX-4559  
 SHEET 4 OF 8

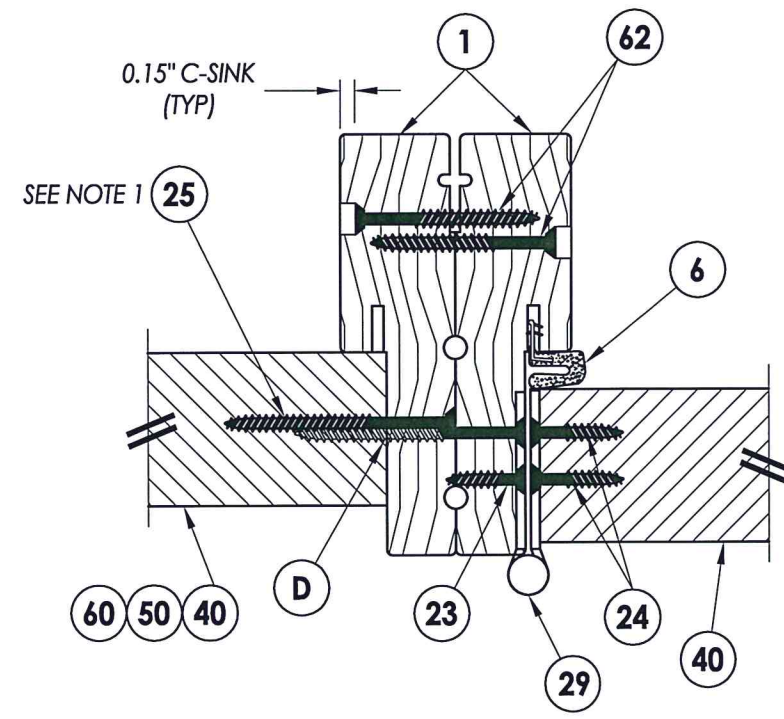
R:\Clients\Therma Tru PERMANENT\B - Texas Dept of Ins\TDI - DR XXX Flush Glazed Doors\C - Drawings\Current\TX-4557-62.dwg, 5.3



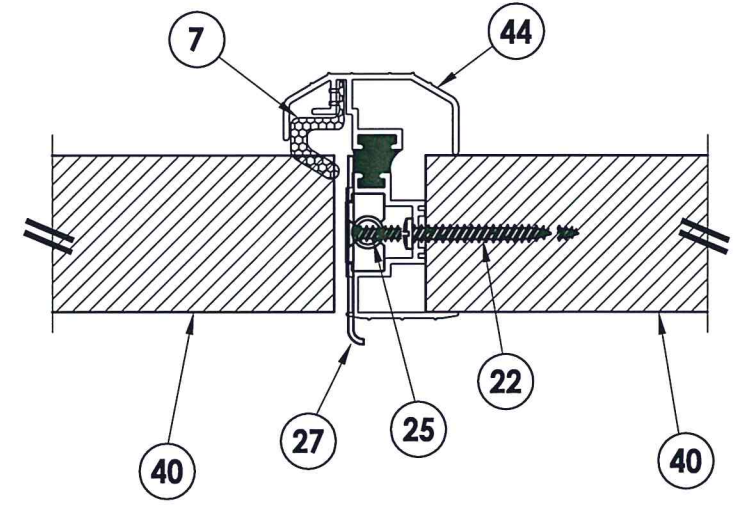
**1 HORIZONTAL CROSS SECTION**  
**5 Outswing Shown (Inswing similar)**



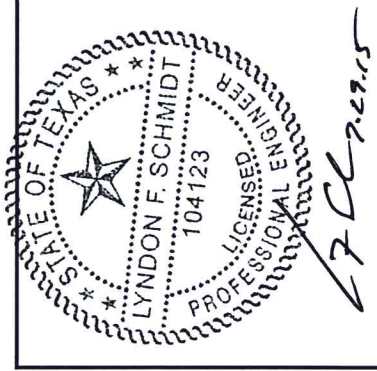
**2 HORIZONTAL CROSS SECTION**  
**5 Outswing Shown (Inswing similar)**



**3 HORIZONTAL CROSS SECTION**  
**5 Outswing Shown (Inswing similar)**



**4 HORIZONTAL CROSS SECTION**  
**5 Outswing Shown (Inswing similar)**



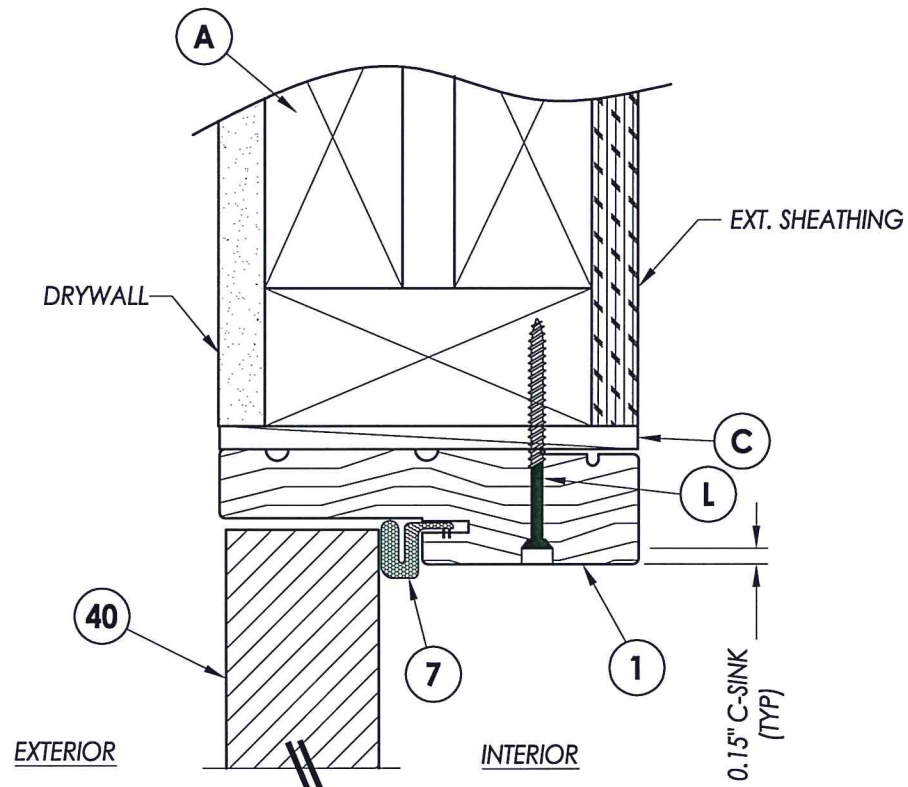
Note:  
 1. Sidelite assembly screws located 8" from each end then 2 more equally spaced (4 total).

Documents Prepared By: Lyndon F. Schmidt, P.E.  
 TEXAS P.E. #104123  
**R.W.** BUILDING CONSULTANTS, INC.  
 P.O. Box 230 Valrico FL 33595  
 Phone No.: 813.659.9197  
 TEXAS BOARD OF PROFESSIONAL ENGINEERS  
 CERTIFICATE OF REGISTRATION # F-11852

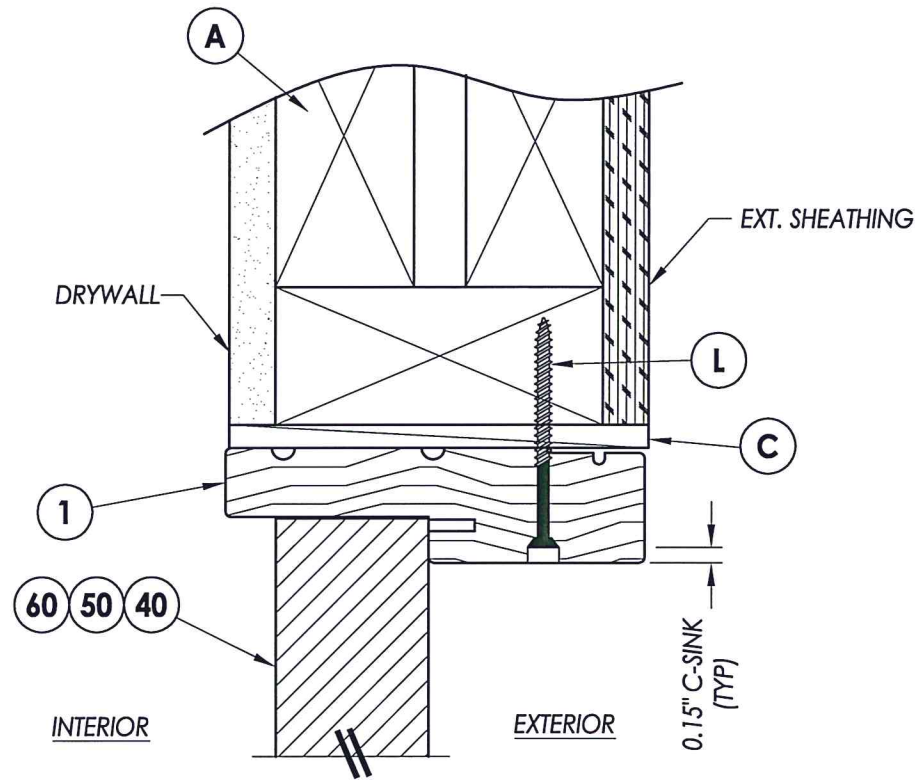
PRODUCT: THERMA-TRU  
 FLUSH GLAZED DOOR  
 PART OR ASSEMBLY:  
 HORIZONTAL  
 CROSS SECTIONS

NO.	DATE	BY

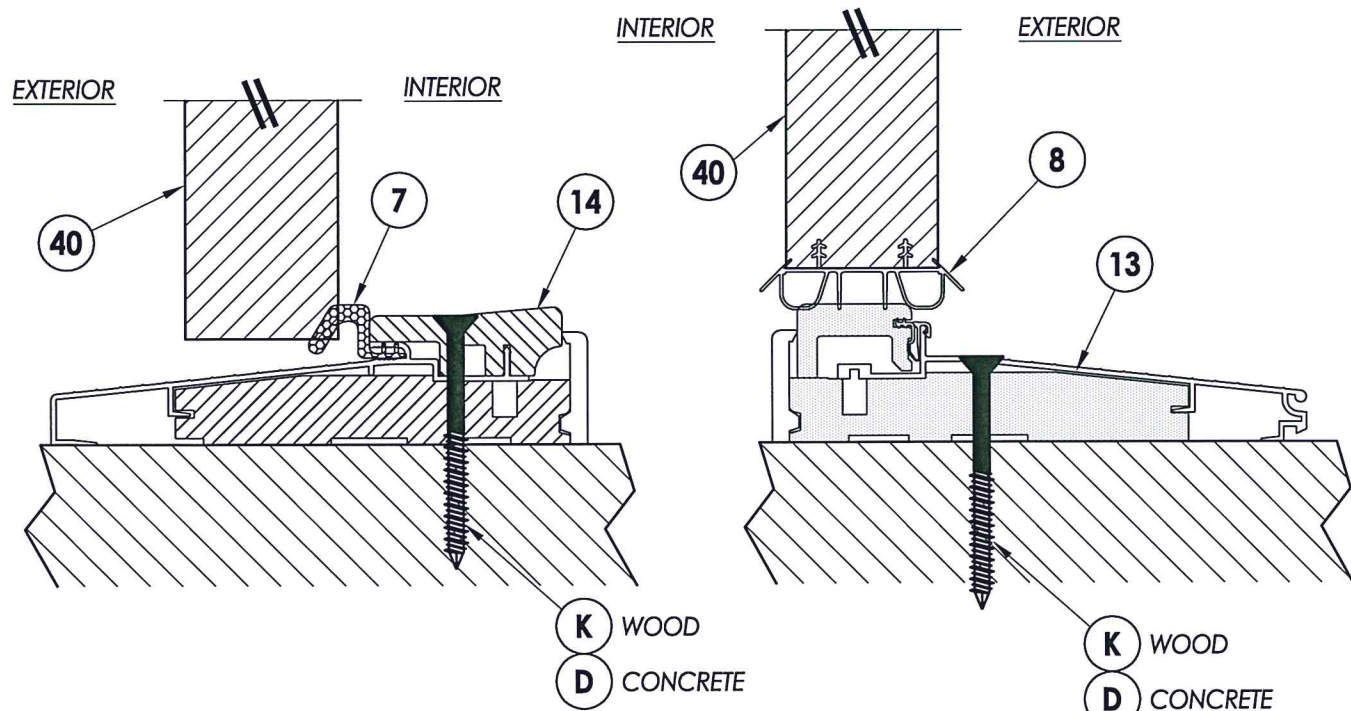
DATE: 7/28/15  
 SCALE: N.T.S.  
 DWG. BY: JK  
 CHK. BY: LFS  
 DRAWING NO.: TX-4559  
 SHEET 5 OF 8



**1** VERTICAL CROSS SECTION  
**6** Outswing Shown (Inswing similar)

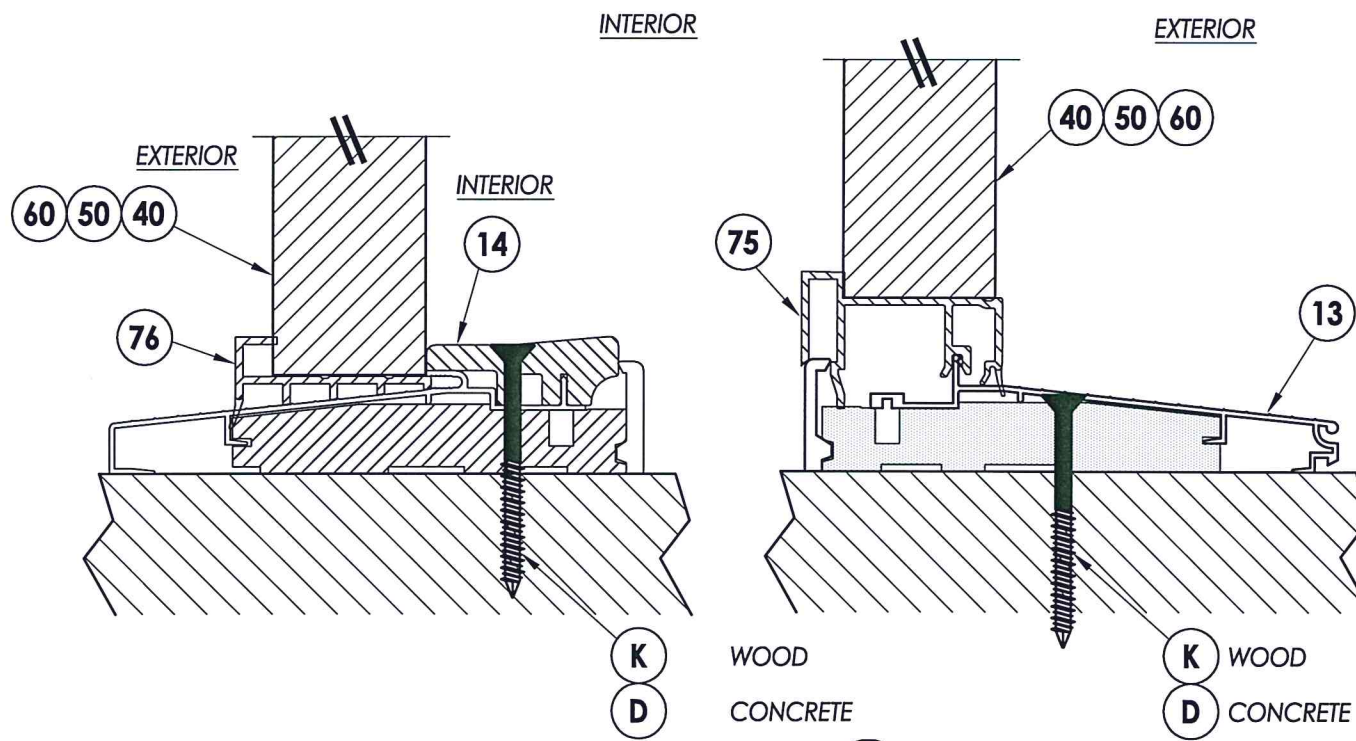


**4** VERTICAL CROSS SECTION  
**6** Outswing Shown (Inswing similar)



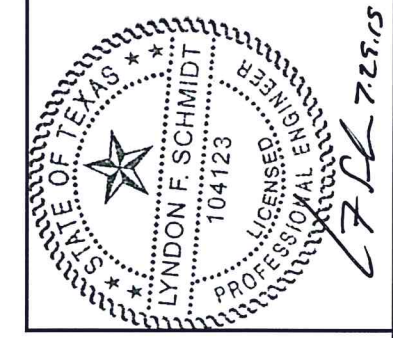
**2** VERTICAL CROSS SECTION  
**6** Outswing Sill

**3** VERTICAL CROSS SECTION  
**6** Inswing Sill



**5** VERTICAL CROSS SECTION  
**6** Outswing Sill

**6** VERTICAL CROSS SECTION  
**6** Inswing Sill



Documents Prepared By: Lyndon F. Schmidt, P.E.  
TEXAS P.E. #104123

RW BUILDING CONSULTANTS, INC.  
P.O. Box 230 Vairico FL, 33595  
Phone No.: 813.659.9197

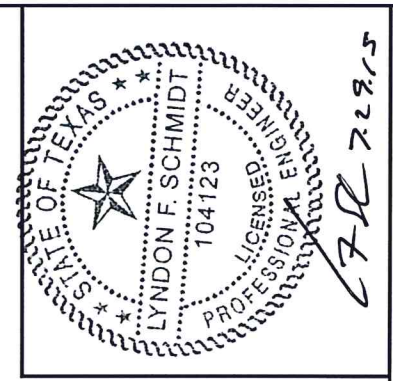
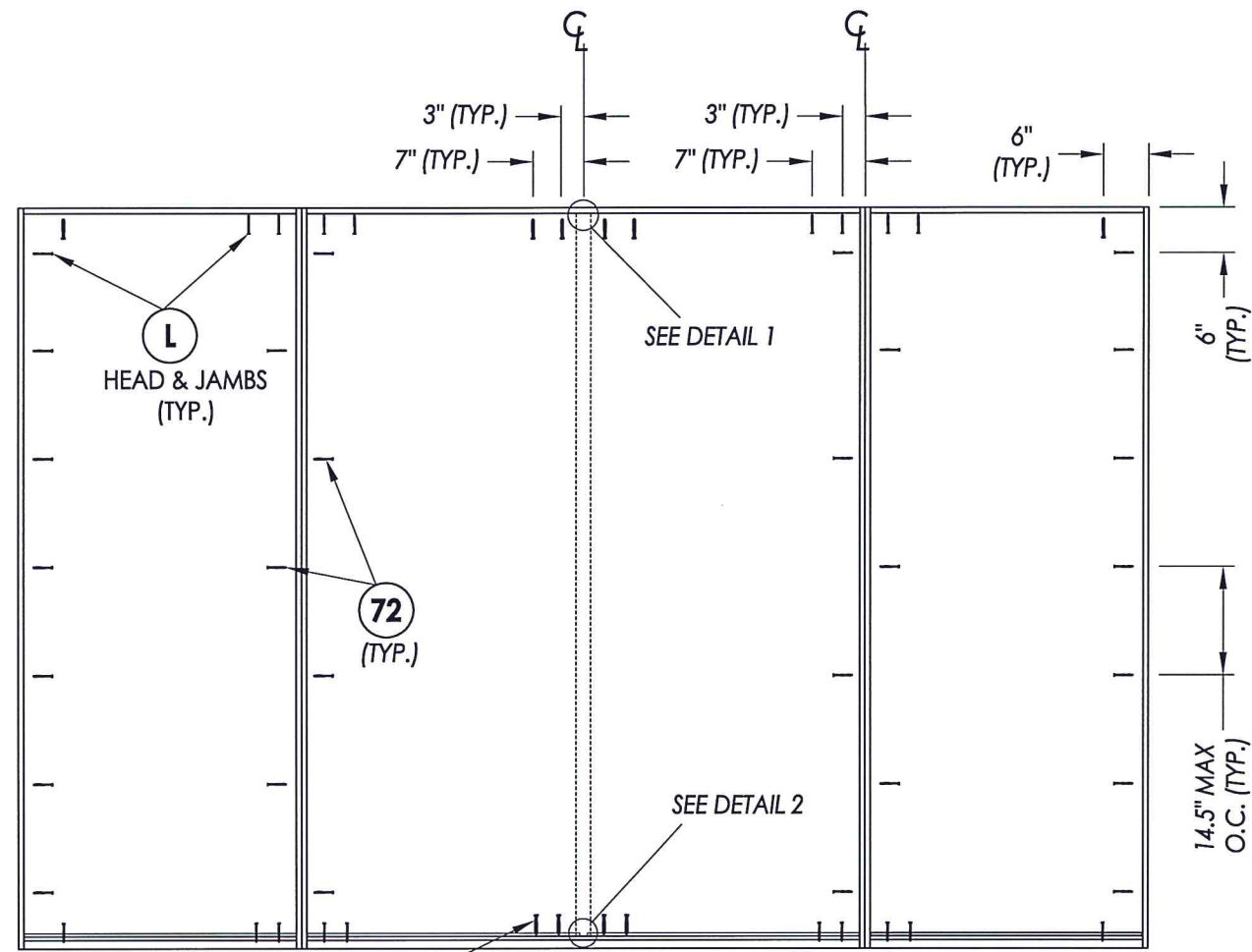
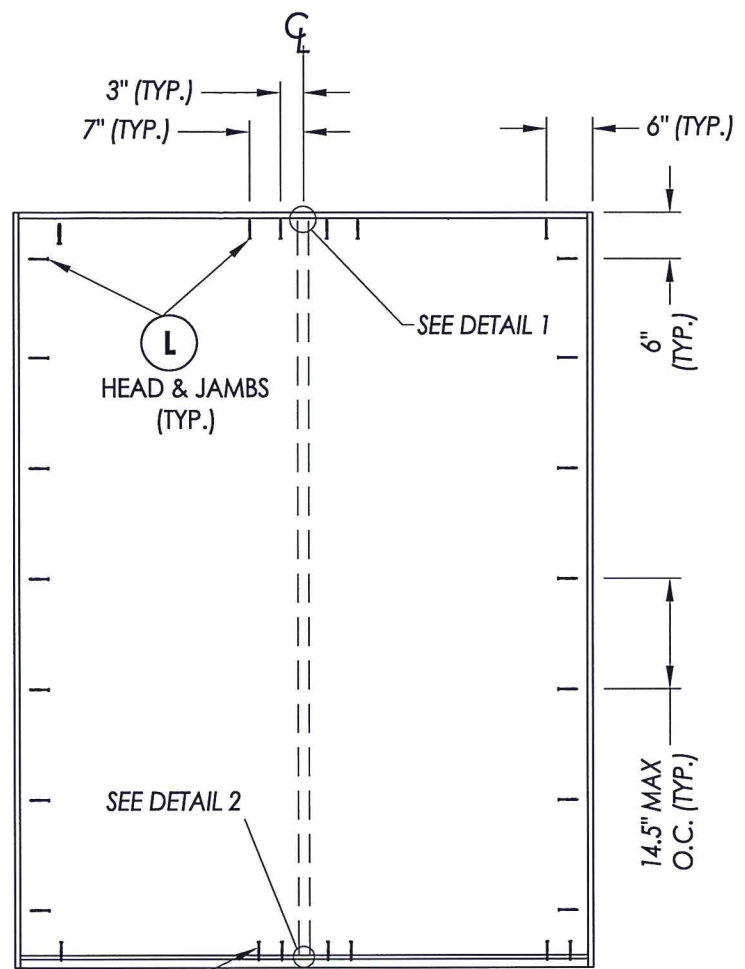
TEXAS BOARD OF PROFESSIONAL ENGINEERS  
CERTIFICATE OF REGISTRATION # F-11852

PRODUCT:	Therma-TRU FLUSH GLAZED DOOR
PART OR ASSEMBLY:	VERTICAL CROSS SECTIONS

NO.	DATE	BY

DATE:	7/28/15
SCALE:	N.T.S.
DWG. BY:	JK
CHK. BY:	LFS
DRAWING NO.:	TX-4559
SHEET	6 OF 8

R:\Clients\Therma Tru PERMANENT\B - Texas Dept of Ins\TDI - DR XXX Flush Glazed Doors\C - Drawings\Current\TX-4557-59.dwg, 7.3



Documents Prepared By: Lyndon F. Schmidt, P.E.  
TEXAS P.E. #104123

**RW** BUILDING CONSULTANTS, INC.  
P.O. Box 230 Valrico FL 33595  
Phone No.: 813.659.9197

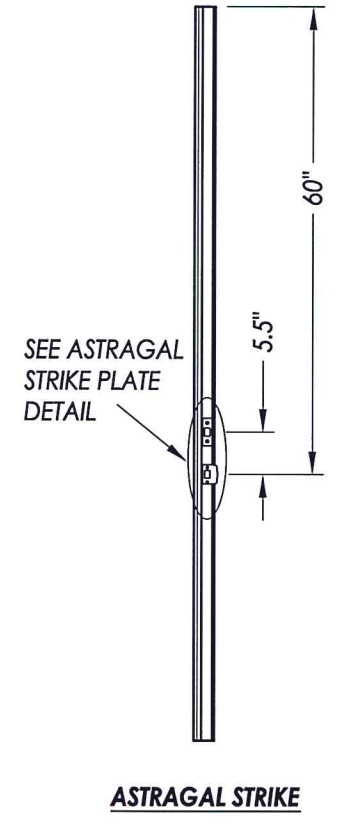
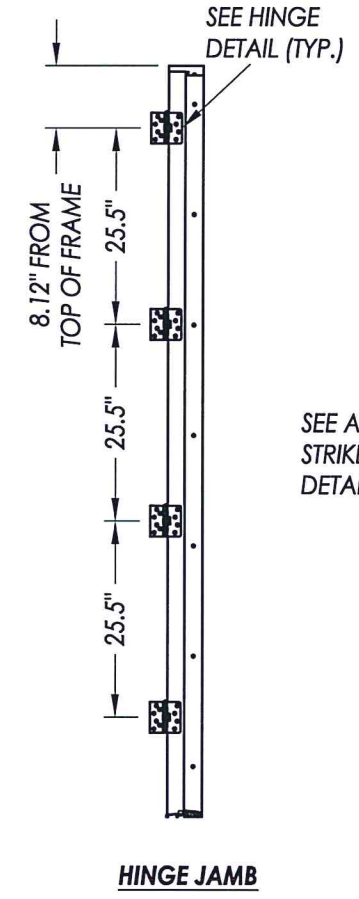
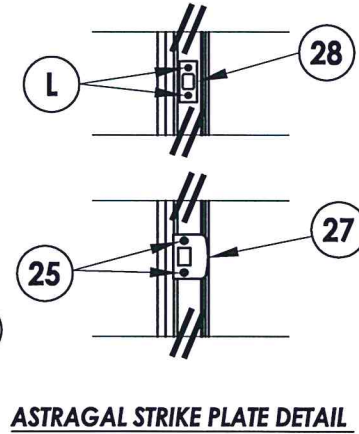
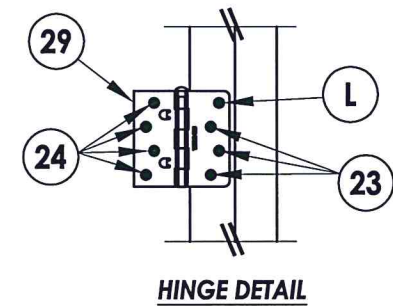
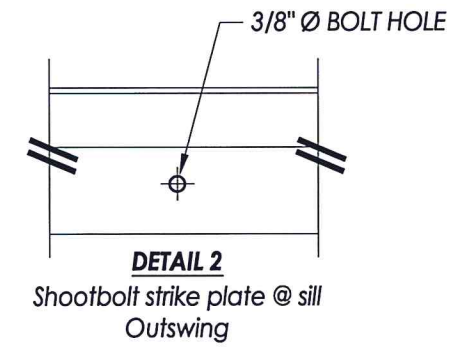
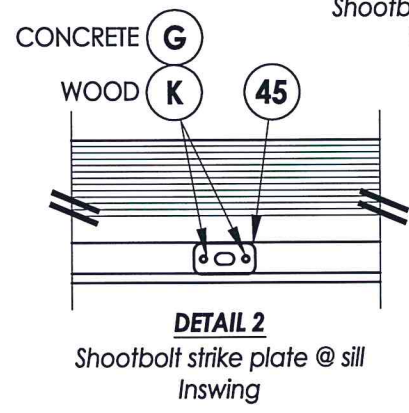
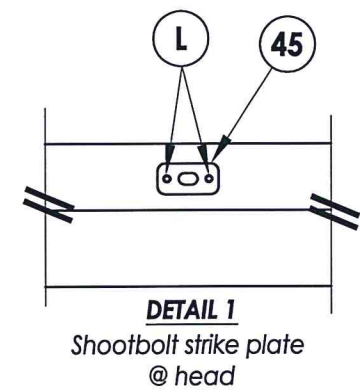
TEXAS BOARD OF PROFESSIONAL ENGINEERS  
CERTIFICATE OF REGISTRATION # F-11852

**FRAME ANCHORING**  
XX

(K) WOOD  
(D) CONCRETE  
SILL (TYP.)

**FRAME ANCHORING**  
XX

(K) WOOD  
(D) CONCRETE  
SILL (TYP.)



**FRAME ANCHORING**  
2X stud framing  
w/ wood/concrete substrate

PRODUCT: THERMA-TRU  
FLUSH GLAZED DOOR

PART OR ASSEMBLY:  
FRAME ANCHORING  
& HARDWARE DETAILS

NO.	DATE	BY	REVISIONS

DATE: 7/28/15  
SCALE: N.T.S.  
DWG. BY: JK  
CHK. BY: LFS  
DRAWING NO.: TX-4559  
SHEET 7 OF 8

