

plastpro

5200 W. CENTURY BLVD.
LOS ANGELES, CA 90045

Rustic/Mahogany/Woodgrain/Smooth Skin Series Smooth Skin Series Fiberglass Double Door w/ & w/out Sidelite(s) INSWING / OUTSWING "IMPACT"

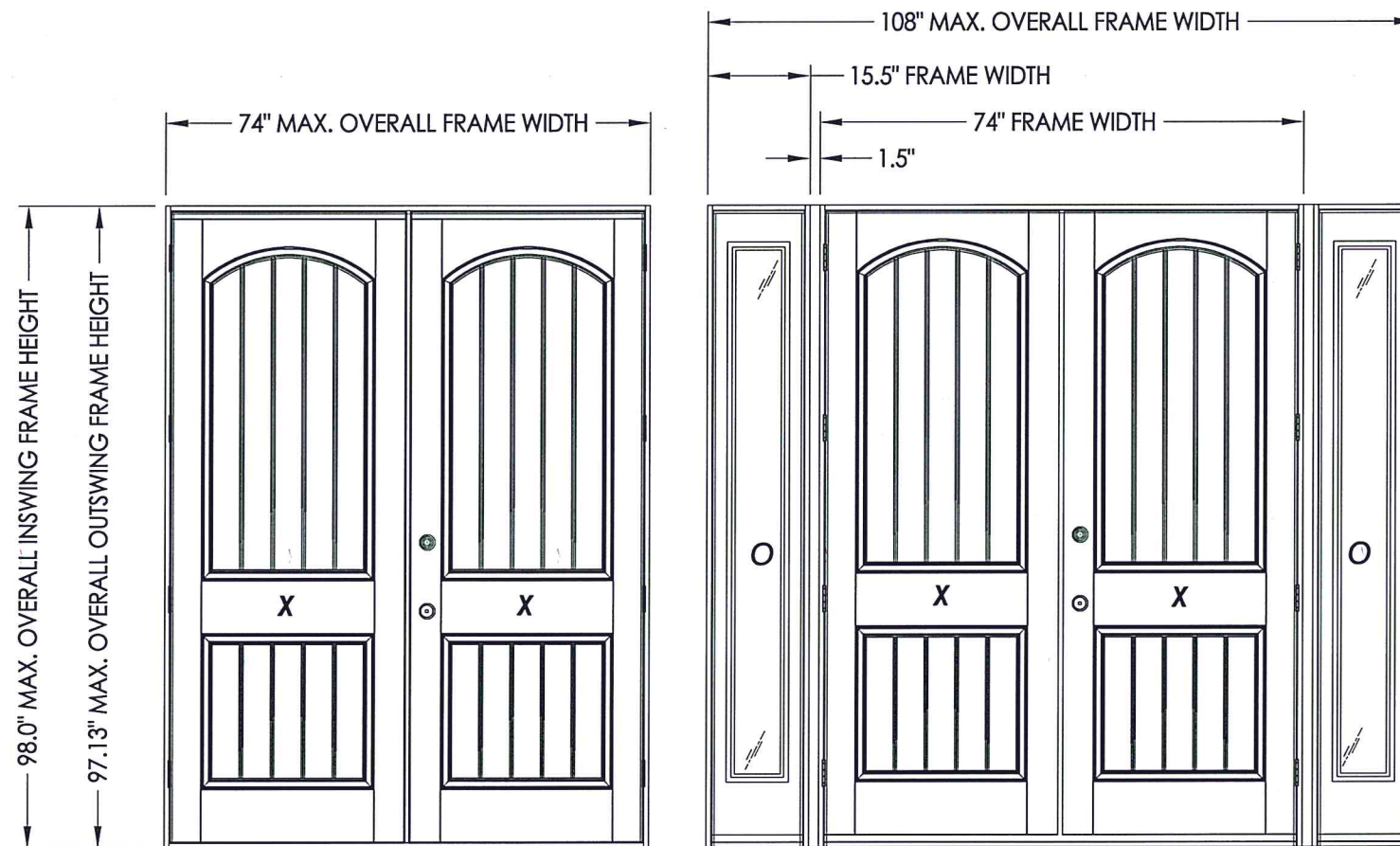
EVALUATED FOR USE IN THE STATE OF TEXAS

The Fiberglass Door system described herein complies with the 2018 International Residential Code (IRC), Sections R301 & R609 and the 2018 International Building Code (IBC), Sections 1404.13, 1609, 1709.5, 2403 and 2404 subject to the following conditions:

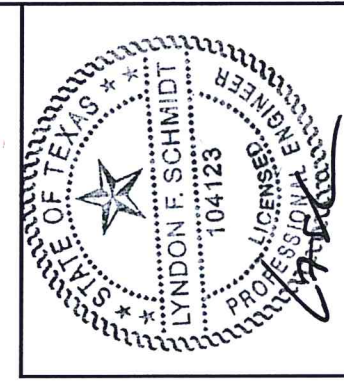
1. Anchors shall be as listed and spaced as shown in the details. Anchor embedment to base material shall be beyond wall dressing or stucco.
2. This system has been tested and evaluated as a large missile impact protective system for installation in areas that require wind borne debris protection. This product meets missile level "D" as defined in ASTM E 1996.
3. Allowable design pressure requirements must be equal to or less than the design pressure rating shown in the design pressure chart, sheet 1 of this drawing.
4. Conditions not covered by this drawing are subject to further engineering analysis.

TABLE OF CONTENTS

SHEET#	DESCRIPTION
1	Typical elevations, design pressures & general notes
2	Door panel details
3	Door panel details
4	Sidelite panel details
5	Glazing details
6	Glazing details
7	Elevations
8	Horizontal cross sections
9	Vertical cross sections
10	Vertical cross sections
11	Frame anchoring
12	Astragal detail
13	Astragal detail
14	Bill of materials and components



CONFIGURATION	MAX. FRAME DIMENSION	MAX. SIDELITE D.L.O. DIMENSION	DESIGN PRESSURE (PSF) INSWING		DESIGN PRESSURE (PSF) OUTSWING	
			POSITIVE	NEGATIVE	POSITIVE	NEGATIVE
XX	74.0" x 98.0"	N / A	+47.0	-50.0	+47.0	-47.0
OXXO	108.0" x 98.0"	6.75" X 78.75"	+47.0	-50.0	+47.0	-47.0



5-4-20
Lyndon F. Schmidt, P.E.
TEXAS P.E. #104123

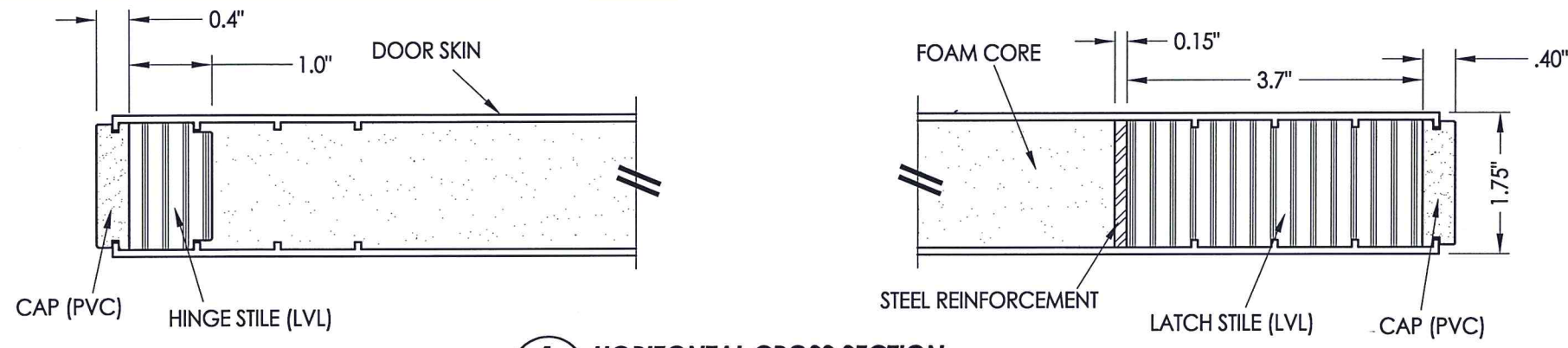
RW BUILDING CONSULTANTS, INC.
P.O. Box 230 Valrico FL, 33595
Phone No.: 813.659.9197
TEXAS BOARD OF PROFESSIONAL ENGINEERS
CERTIFICATE OF REGISTRATION # F-11852

PRODUCT: PLASTPRO INC FIBERGLASS DOOR
PART OR ASSEMBLY: TYPICAL ELEVATION, DESIGN PRESSURES & GENERAL NOTES

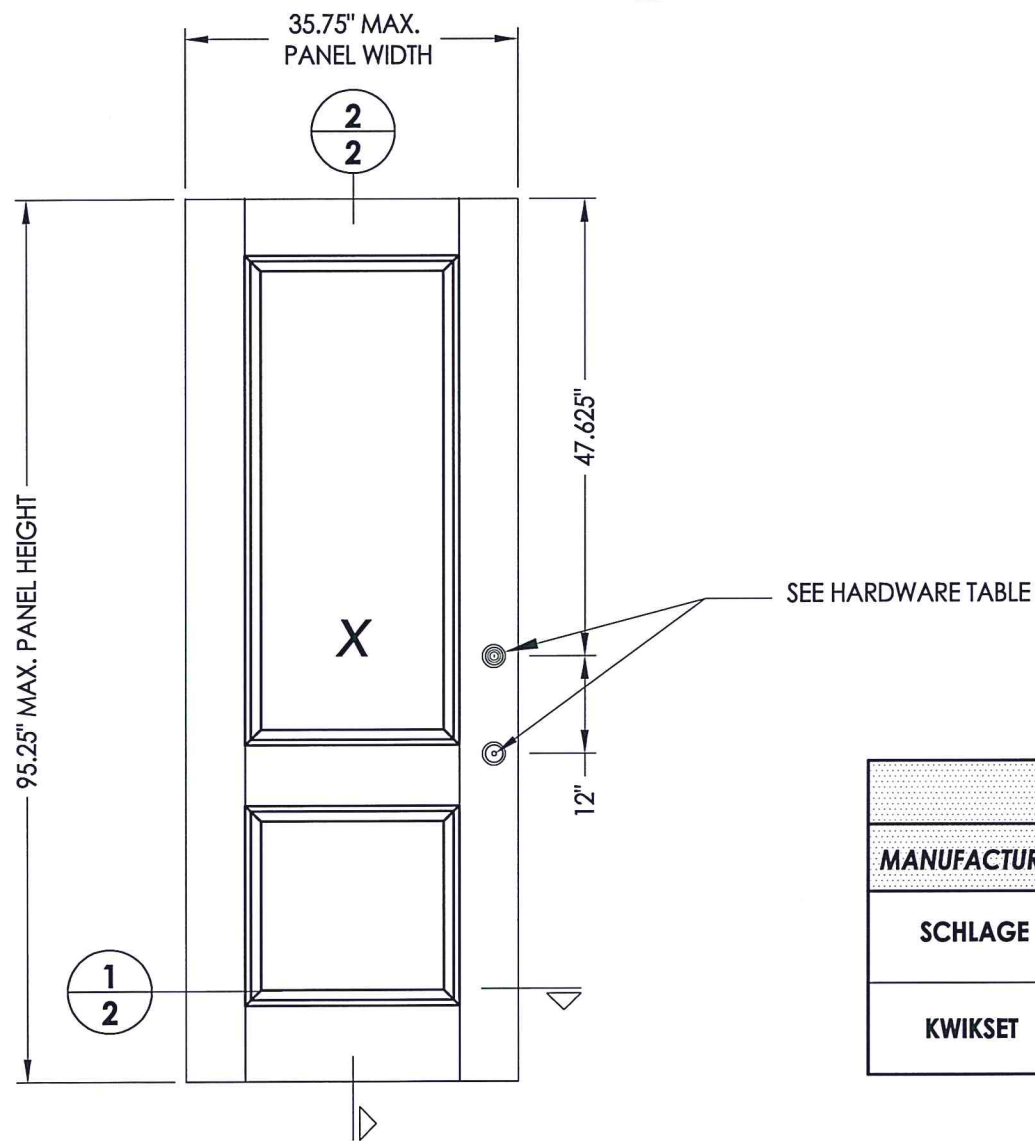
NO.	DATE	UPDATE TO 2018 IBC/IRC CODE	LFS	BY
1	5/04/20			

DATE: 11/29/12
SCALE: N.T.S.
DWG. BY: JK
CHK. BY: LFS
DRAWING NO.: TX-4284
SHEET 1 OF 14

R:\Clients\Plastpro, Inc. PERMANENT\B - TDI\Hinged Doors - Fiberglass\DR - 626 Opaque Fiberglass (Impact)\C - Drawings\TX-4283-84.dwg, 2.2

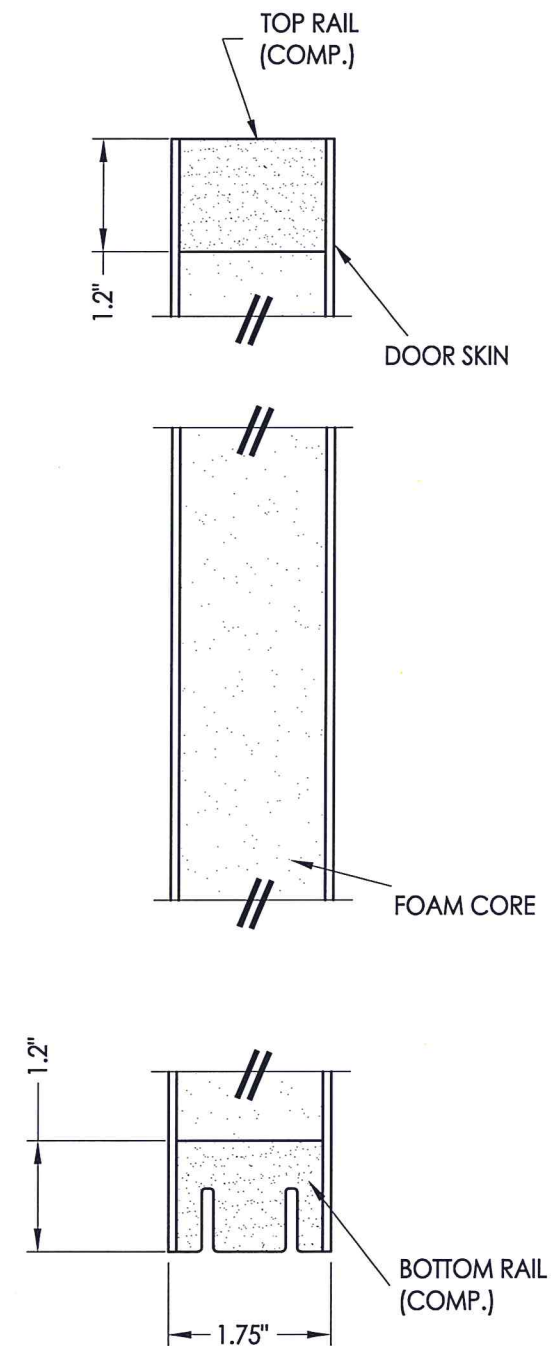


1 HORIZONTAL CROSS SECTION
 2



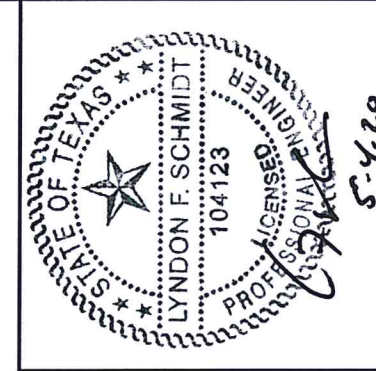
40 DOOR PANEL
 Woodgrain / Smooth Skin Series

HARDWARE TABLE	
MANUFACTURER	MODEL
SCHLAGE	KNOB: "F" SERIES
	DEADBOLT: "B" SERIES
KWIKSET	KNOB: SIGNATURE SERIES
	DEADBOLT: SIGNATURE SERIES (780)



2 VERTICAL CROSS SECTION
 2

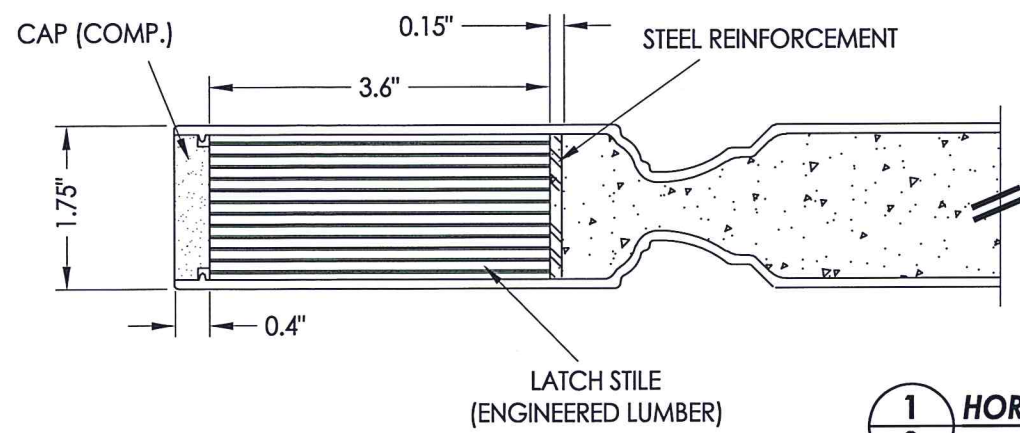
FIBERGLASS DOOR SKIN: MIN. 0.086" THK.
 CORE MATERIAL: POLYURETHANE FOAM (1.9 PCF MIN.)



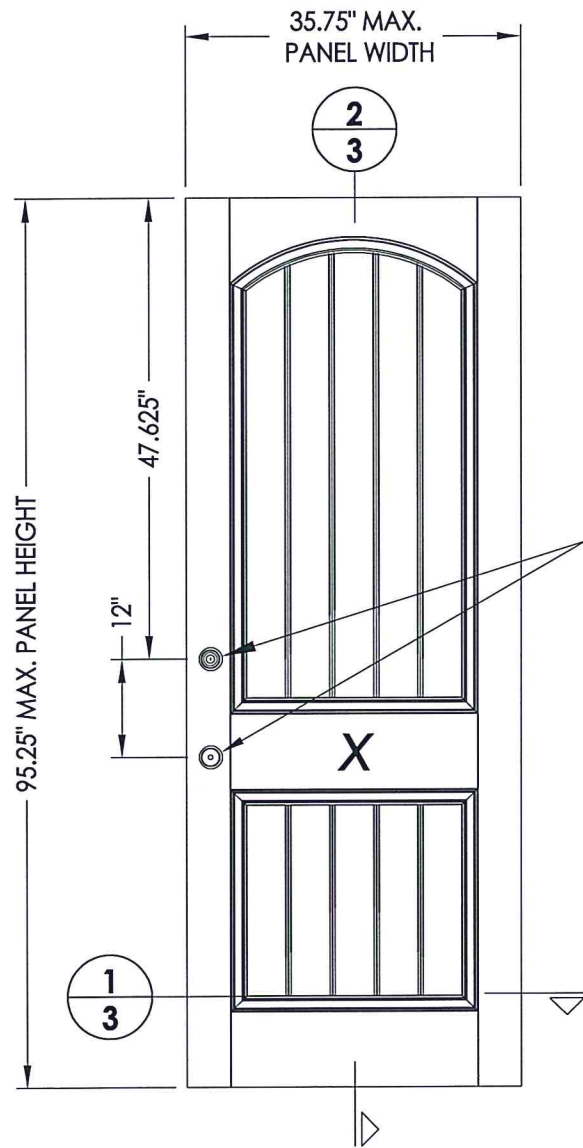
Documents Prepared By: Lyndon F. Schmidt, P.E.
 TEXAS P.E. #104123
RW BUILDING CONSULTANTS, INC.
 P.O. Box 230 Valrico FL 33595
 Phone No.: 813.659.9197
 TEXAS BOARD OF PROFESSIONAL ENGINEERS
 CERTIFICATE OF REGISTRATION # F-11852

PRODUCT:	PLASTPRO INC. FIBERGLASS DOOR
PART OR ASSEMBLY:	DOOR PANEL DETAILS
NO.	1
DATE	5/04/20
UPDATE TO	2018 IBC/IRC CODE
LFS	BY
REVISIONS	
DATE:	11/29/12
SCALE:	N.T.S.
DWG. BY:	JK
CHK. BY:	LFS
DRAWING NO.:	TX-4284
SHEET	2 OF 14

R:\Clients\Plastpro, Inc PERMANENT\B - TDI\Hinged Doors - Fiberglass\DR - 626 Opaque Fiberglass (Impact)\C - Drawings\TX-4283-84.dwg, 3.2

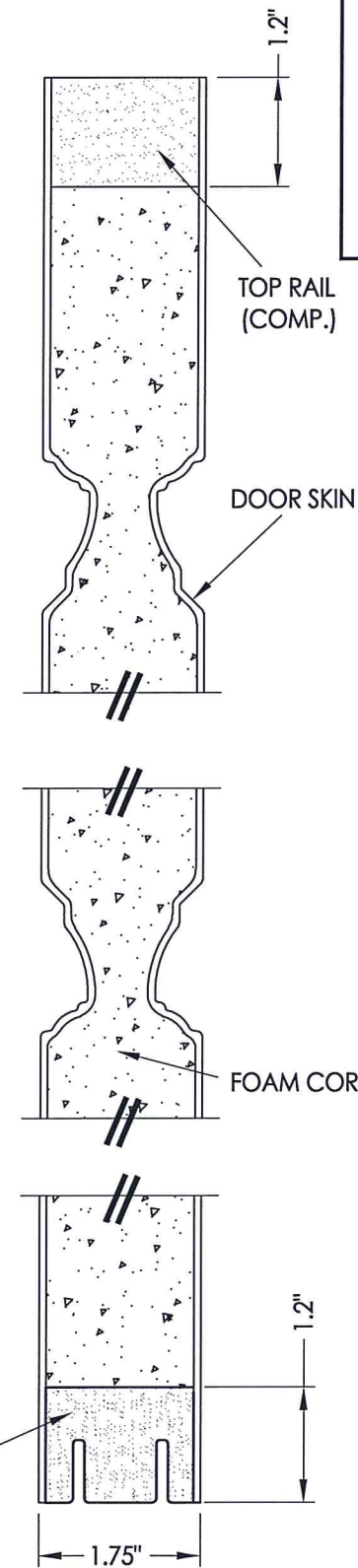


1
3 HORIZONTAL CROSS SECTION



41 DOOR PANEL
Rustic / Mahogany Series

HARDWARE TABLE	
MANUFACTURER	MODEL
SCHLAGE	KNOB: "F" SERIES DEADBOLT: "B" SERIES
KWIKSET	KNOB: SIGNATURE SERIES DEADBOLT: SIGNATURE SERIES (780)



2
3 VERTICAL CROSS SECTION



Documents Prepared By: Lyndon F. Schmidt, P.E.
TEXAS P.E. #104123

RW BUILDING CONSULTANTS, INC.
P.O. Box 230 Vairico FL, 33595
Phone No.: 813.659.9197

TEXAS BOARD OF PROFESSIONAL ENGINEERS
CERTIFICATE OF REGISTRATION # F-11852

PRODUCT: PLASTPRO INC. FIBERGLASS DOOR

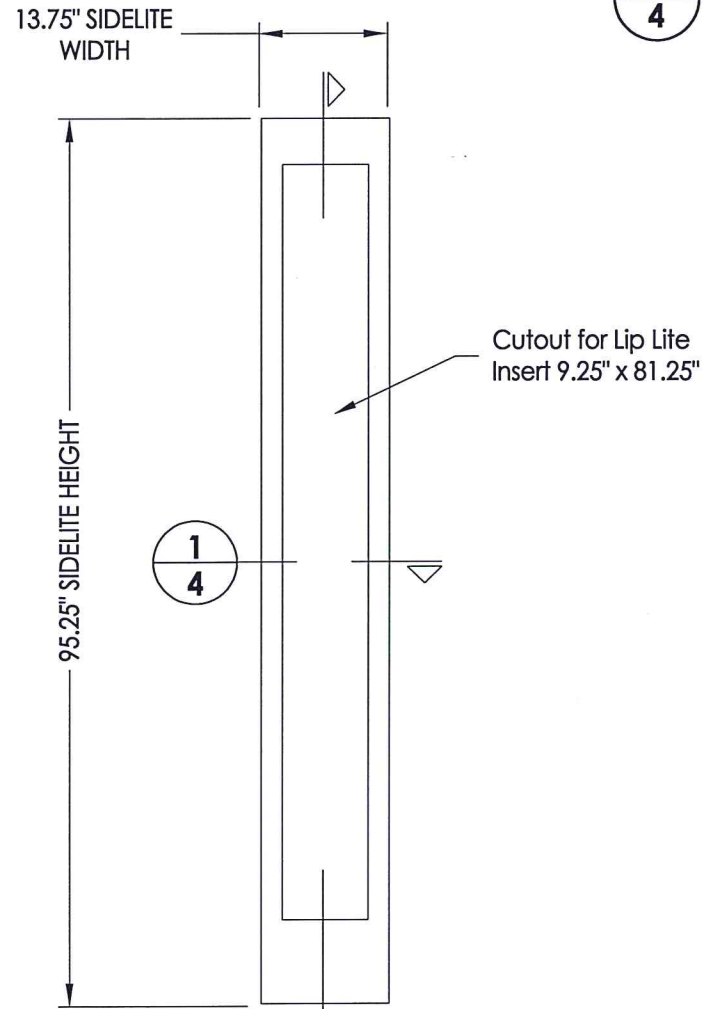
PART OR ASSEMBLY: DOOR PANEL DETAILS

NO.	DATE	REVISIONS
1	5/04/20	UPDATE TO 2018 IBC/IRC CODE
LFS		BY

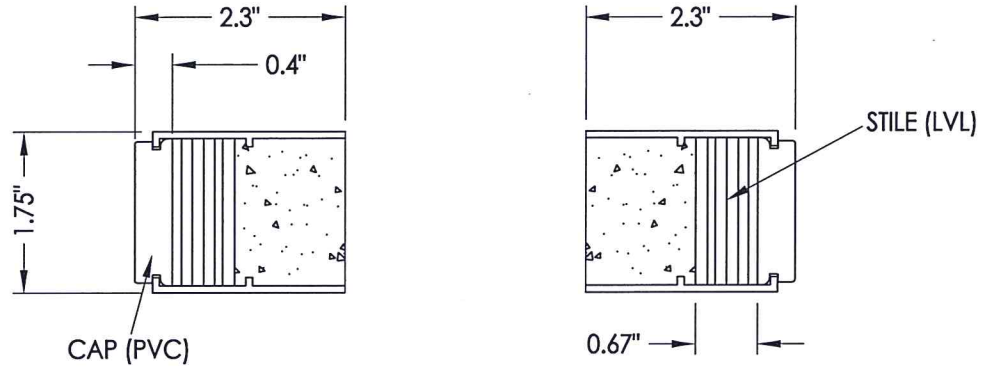
DATE: 11/29/12
SCALE: N.T.S.
DWG. BY: JK
CHK. BY: LFS
DRAWING NO.: TX-4284
SHEET 3 OF 14

FIBERGLASS DOOR SKIN: MIN. 0.100" THK.
CORE MATERIAL: POLYURETHANE FOAM (1.9 PCF MIN.)

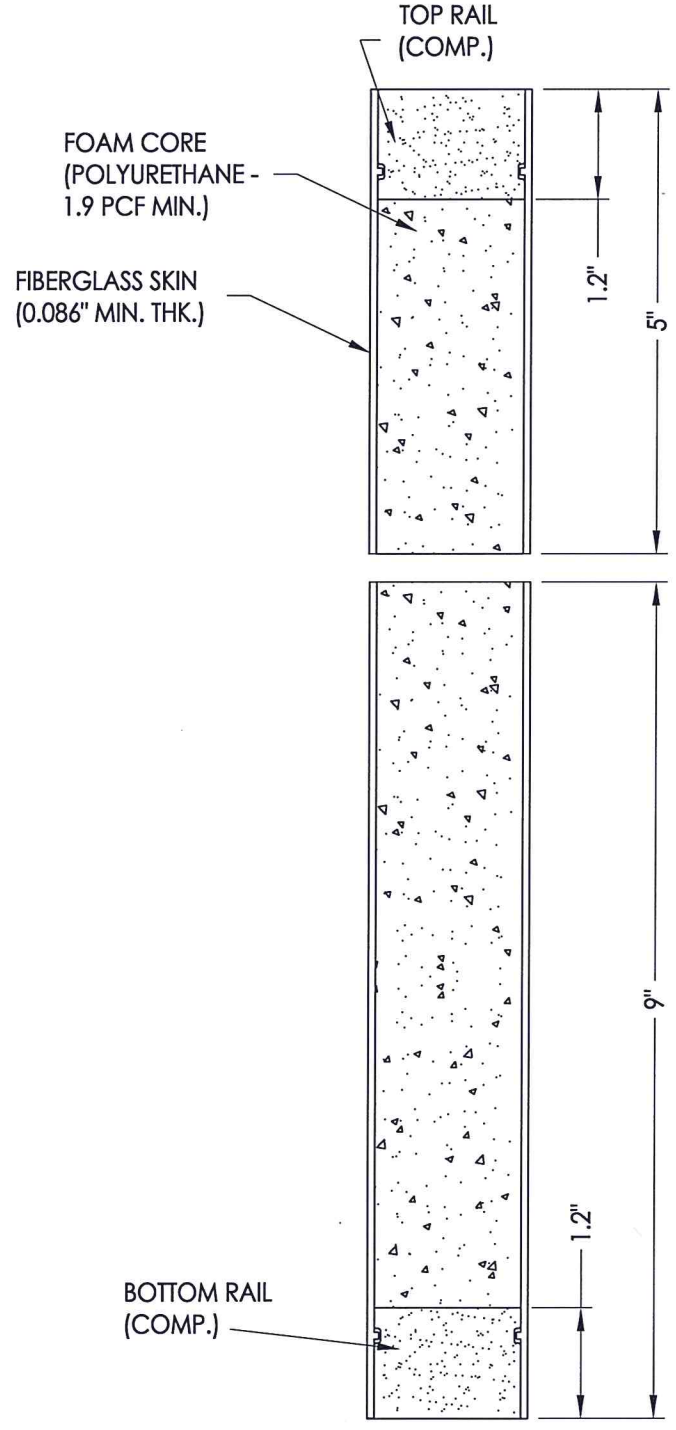
© 2012 RW BUILDING CONSULTANTS INC.



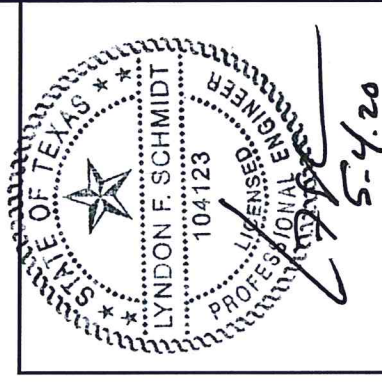
50 **SIDELITE PANEL**
Plastpro
Fiberglass



1/**4** **HORIZONTAL CROSS SECTION**



2/**4** **VERTICAL CROSS SECTION**

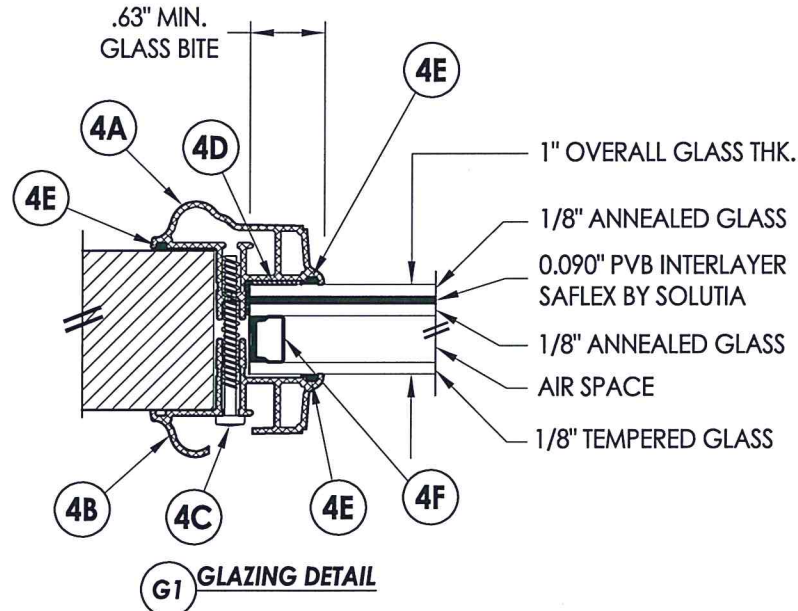
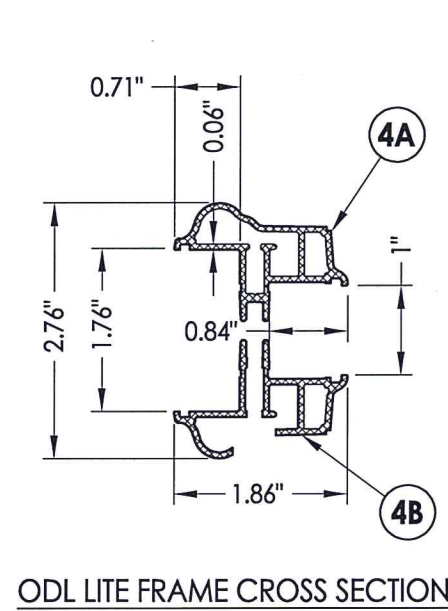
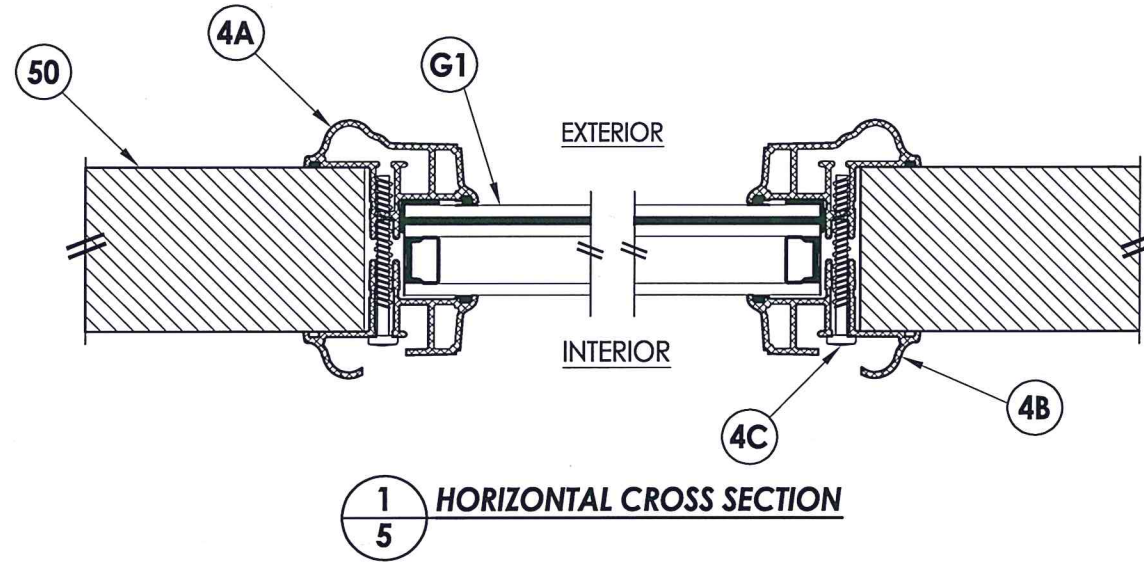
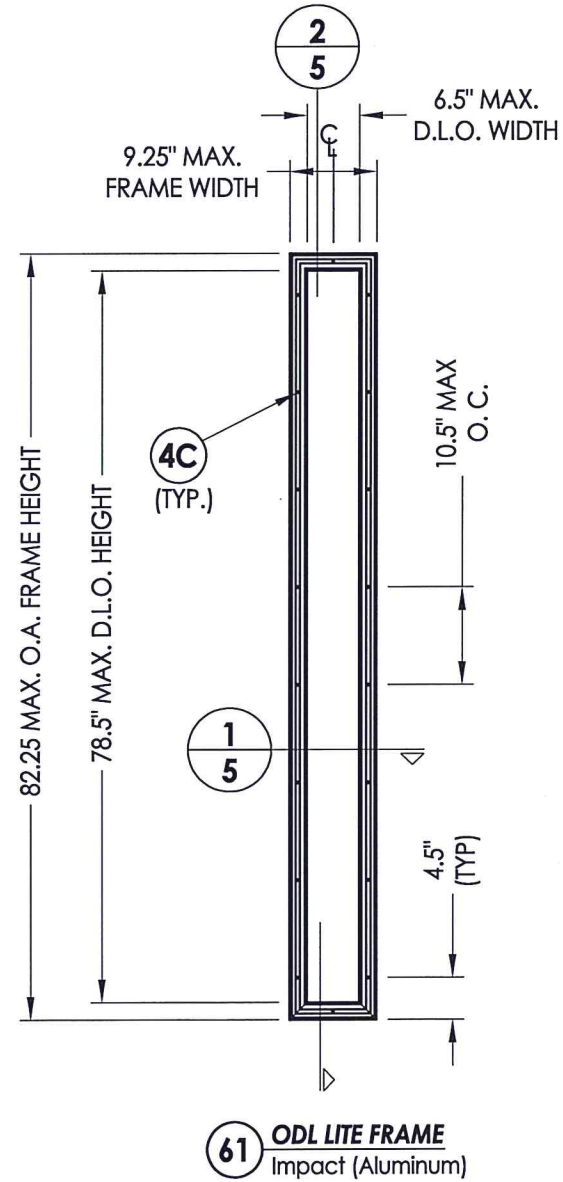


Documents Prepared By: Lyndon F. Schmidt, P.E.
TEXAS P.E. #104123

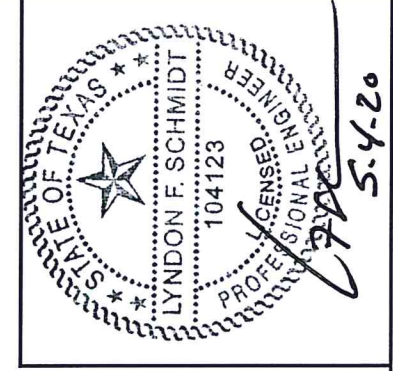
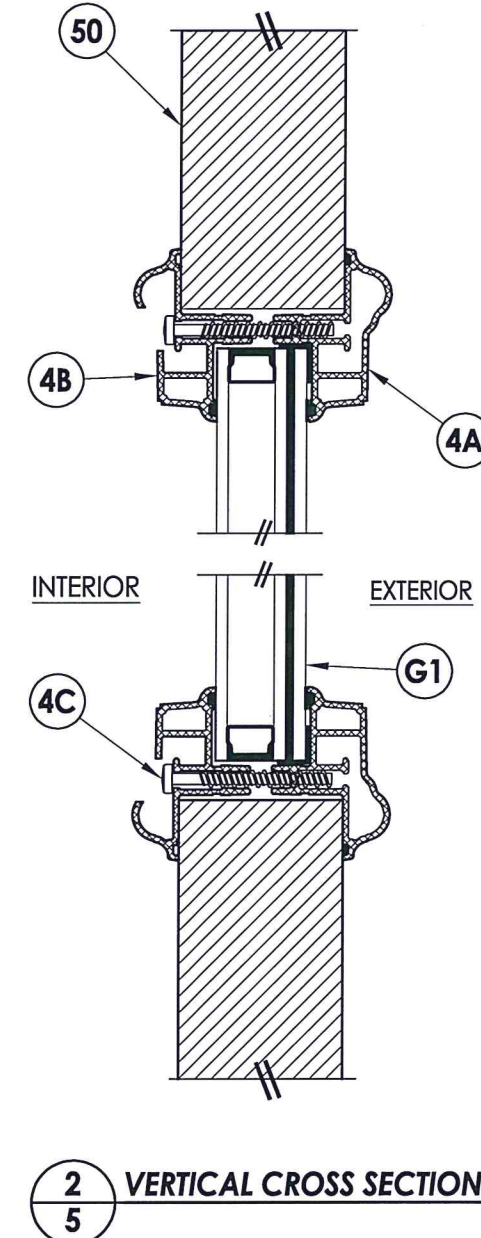
RW BUILDING CONSULTANTS, INC.
P.O. Box 230 Valrico FL 33595
Phone No.: 813.659.9197

TEXAS BOARD OF PROFESSIONAL ENGINEERS
CERTIFICATE OF REGISTRATION # F-11852

PRODUCT:		PLASTPRO INC. FIBERGLASS DOOR	
PART OR ASSEMBLY:		SIDELITE PANEL DETAILS	
NO.	DATE	DESCRIPTION	BY
1	5/04/20	UPDATE TO 2018 IBC/IRC CODE	LFS
			REVISIONS
DATE: 11/29/12			
SCALE: N.T.S.			
DWG. BY: JK			
CHK. BY: LFS			
DRAWING NO.: TX-4284			
SHEET 4 OF 14			



BILL OF MATERIALS		
ITEM #	DESCRIPTION	MATERIAL
4A	EXTERIOR FRAME	ALUM.
4B	INTERIOR FRAME	ALUM.
4C	#7-19 X 1-3/4" PPH SELF DRILLING SMS	STEEL
4D	DOW 995 STRUCTURAL SILICONE	SILICONE
4E	NON STRUCTURAL BACKBEDDING SEALANT (READISEAL)	-
4F	GLAZING SPACER	ALUM



Documents Prepared By: Lyndon F. Schmidt, P.E.
TEXAS P.E. #104123

RW BUILDING CONSULTANTS, INC.
P.O. Box 230 Vairico FL 33595
Phone No.: 813.659.9197

TEXAS BOARD OF PROFESSIONAL ENGINEERS
CERTIFICATE OF REGISTRATION # F-11852

PRODUCT: PLASTPRO INC. FIBERGLASS DOOR

PART OR ASSEMBLY:

GLAZING DETAILS

NO.	DATE	REVISIONS	BY
1	5/04/20	UPDATE TO 2018 IBC/IRC CODE	LFS

DATE: 11/29/12

SCALE: N.T.S.

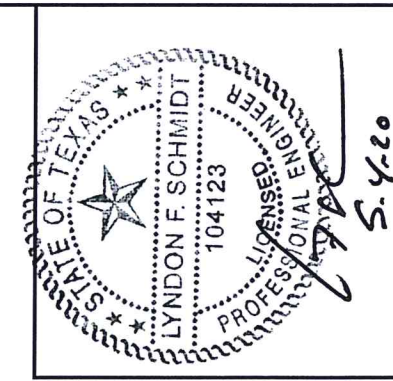
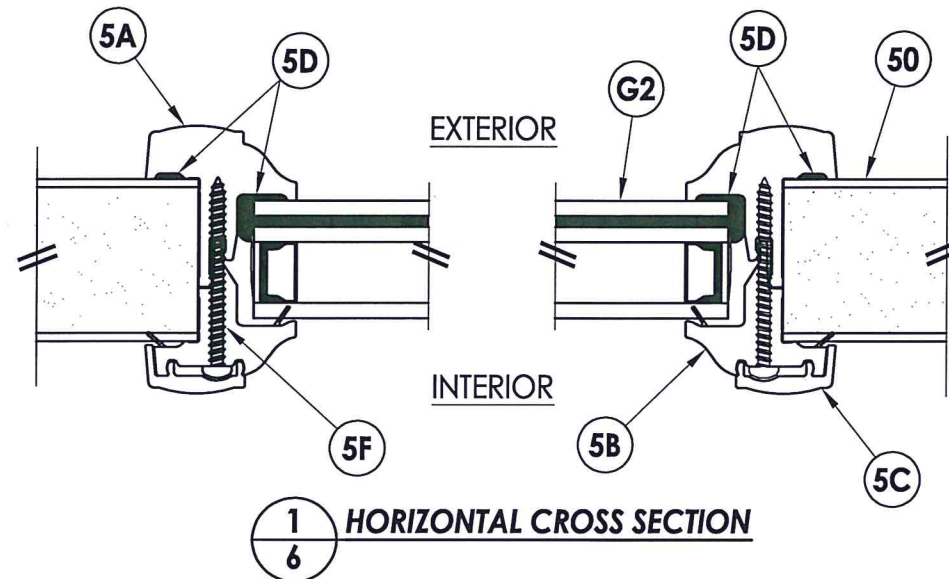
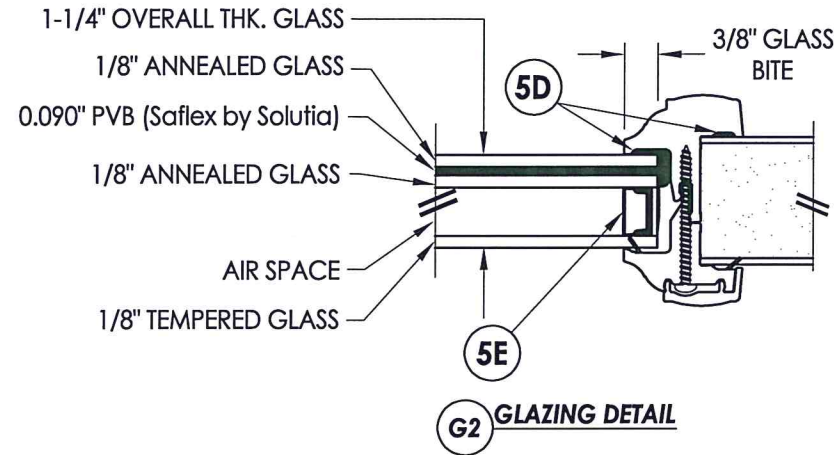
DWG. BY: JK

CHK. BY: LFS

DRAWING NO.: TX-4284

SHEET 5 OF 14

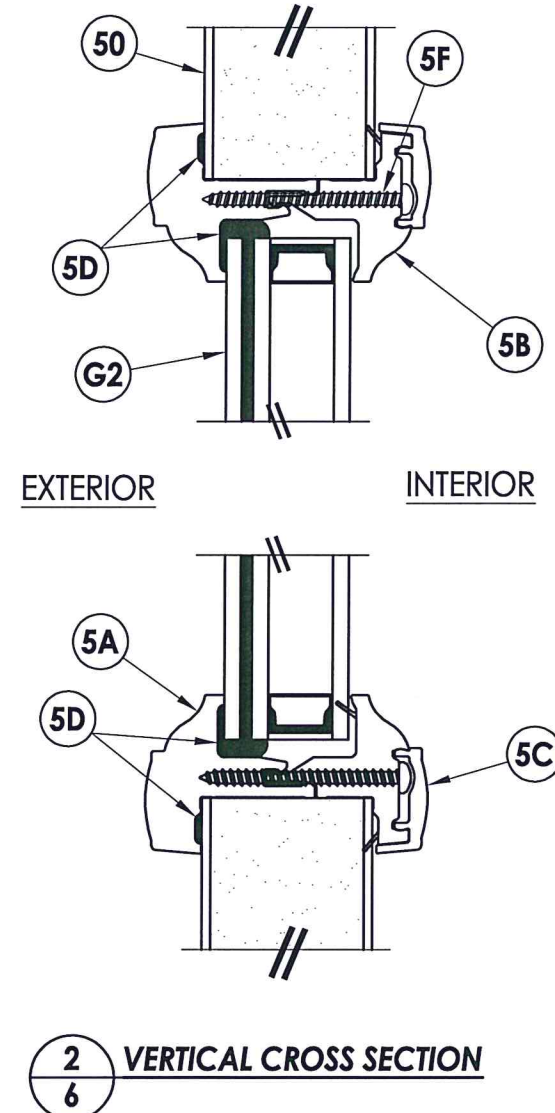
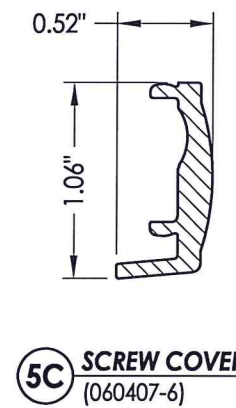
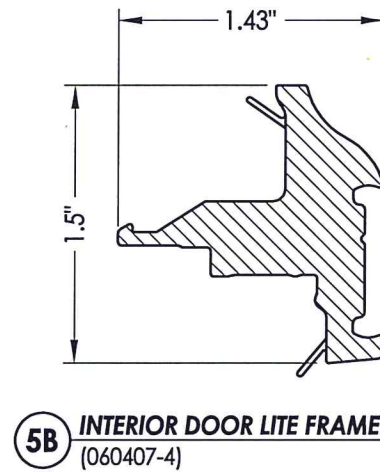
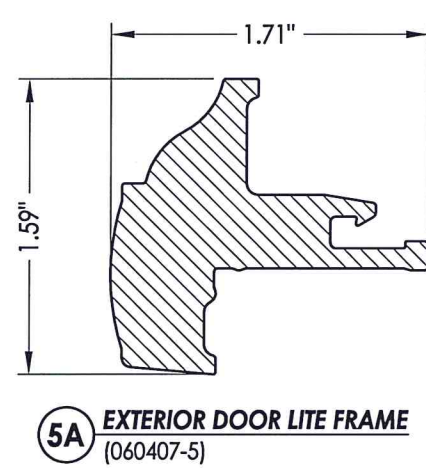
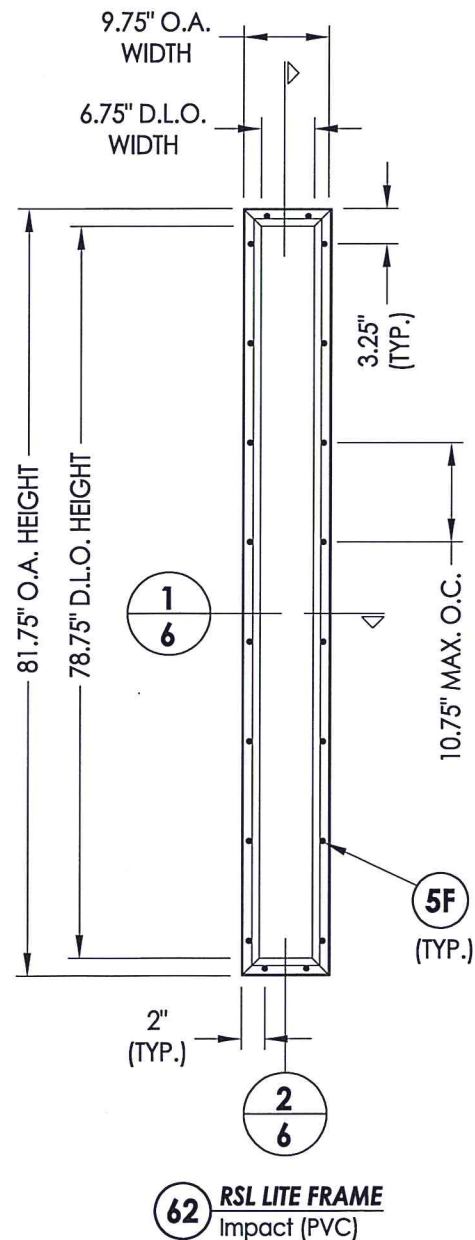
R:\Clients\Plastpro, Inc PERMANENT\B - TD\Hinged Doors - Fiberglass\DR - 626 Opaque Fiberglass (Impact)\C - Drawings\TX-4283-84.dwg, 6.2



Documents Prepared By: Lyndon F. Schmidt, P.E.
TEXAS P.E. #104123

RW BUILDING CONSULTANTS, INC.
P.O. Box 230 Valrico FL, 33595
Phone No.: 813.659.9197

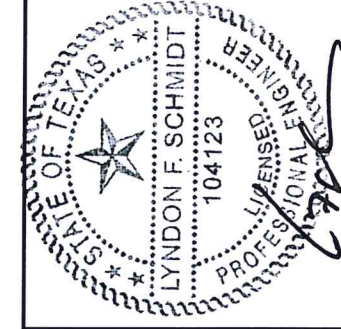
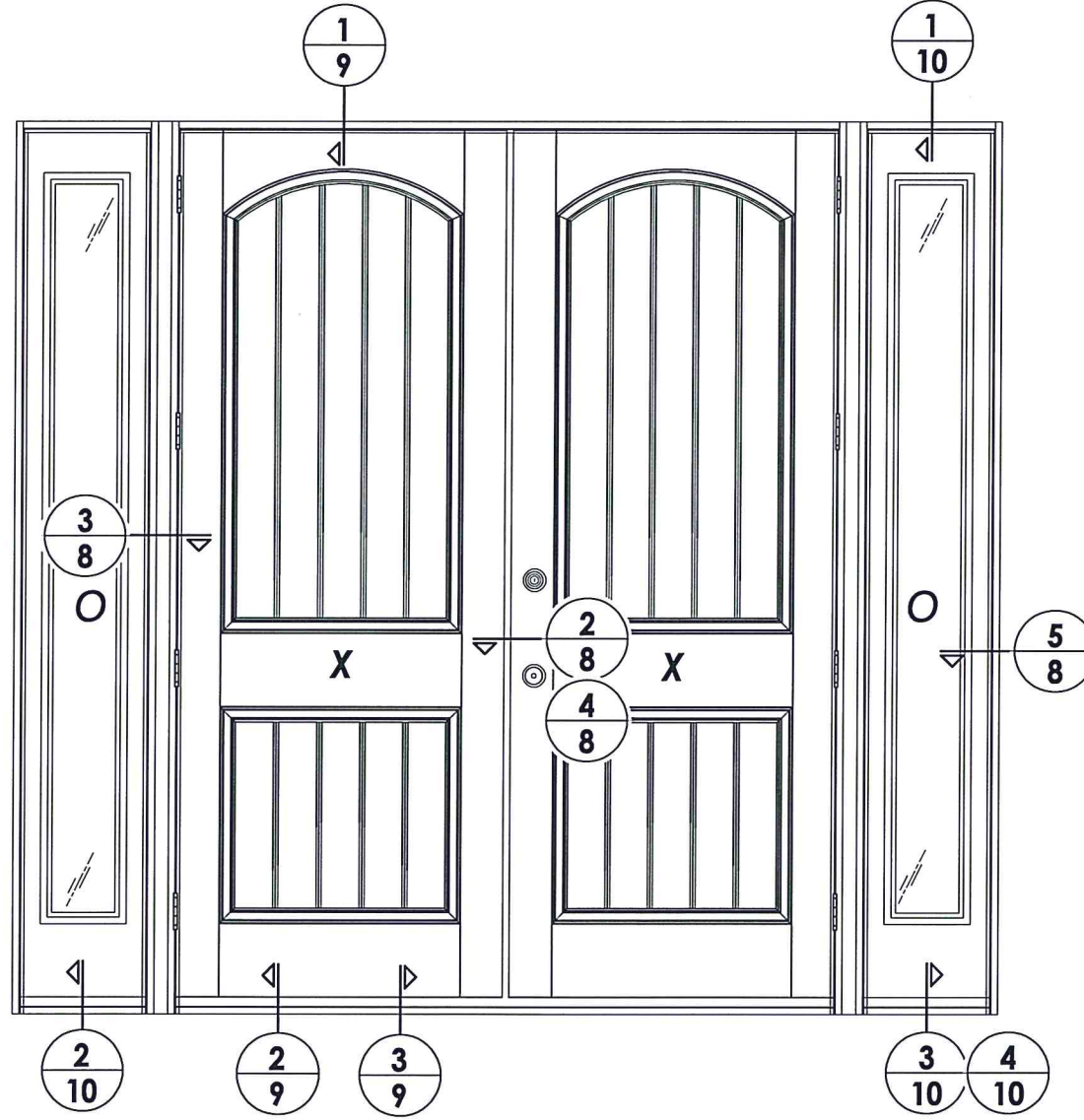
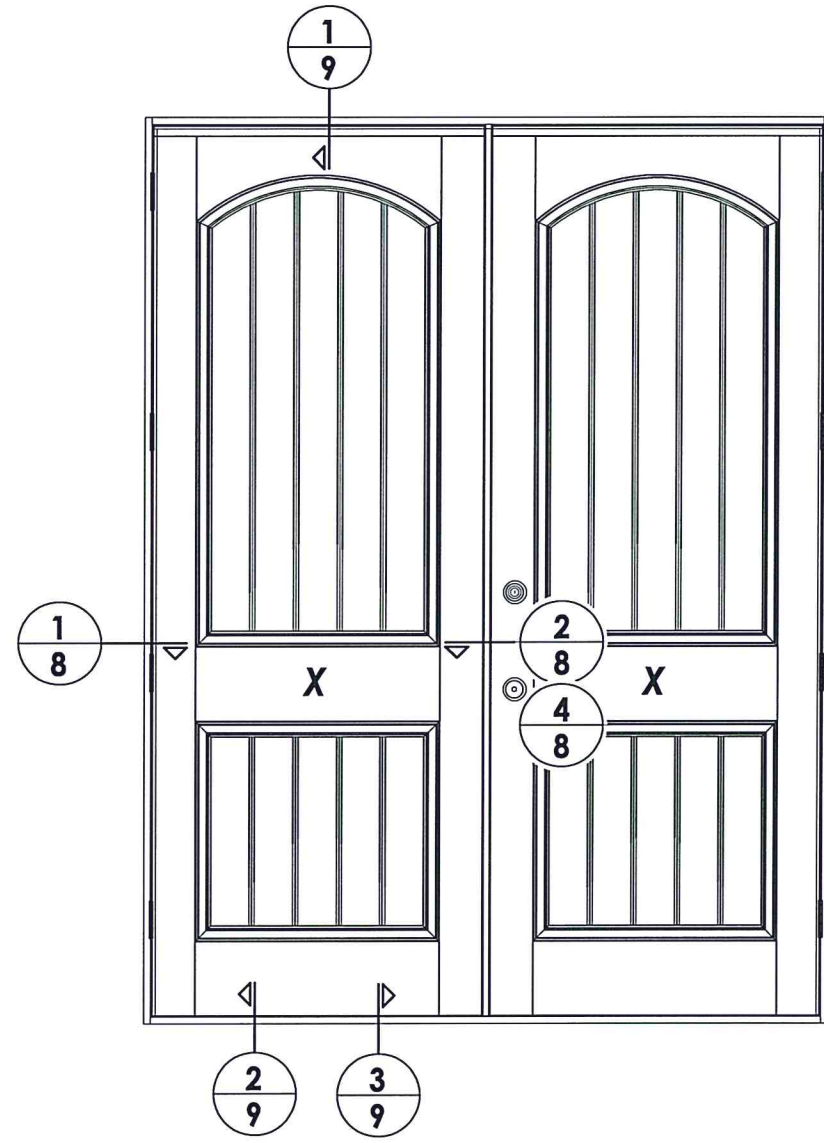
TEXAS BOARD OF PROFESSIONAL ENGINEERS
CERTIFICATE OF REGISTRATION # F-11852



BILL OF MATERIALS		
ITEM #	DESCRIPTION	MATERIAL
5A	EXTERIOR DOOR LIGHT FRAME (BY ROYAL MOULDINGS)	PVC
5B	INTERIOR DOOR LIGHT FRAME (BY ROYAL MOULDINGS)	PVC
5C	SCREW COVER (BY ROYAL MOULDINGS)	PVC
5D	DOW 995 STRUCTURAL SEALANT	SILICONE
5E	1/2" NON-GROOVE SWIGGLE W/ DELCHEM#80 POLYSULFIDE 1/8" BACKFILL	ALUM
5F	#10 X 1-3/4" PH SMS	STEEL

PRODUCT:	PLASTPRO INC. FIBERGLASS DOOR
PART OR ASSEMBLY:	GLAZING DETAILS
NO.	1
DATE	5/04/20
UPDATE TO	2018 IBC/IRC CODE
LFS	BY
REVISIONS	
DATE:	11/29/12
SCALE:	N.T.S.
DWG. BY:	JK
CHK. BY:	LFS
DRAWING NO.:	TX-4284
SHEET	6 OF 14

© 2012 R.W. BUILDING CONSULTANTS INC.



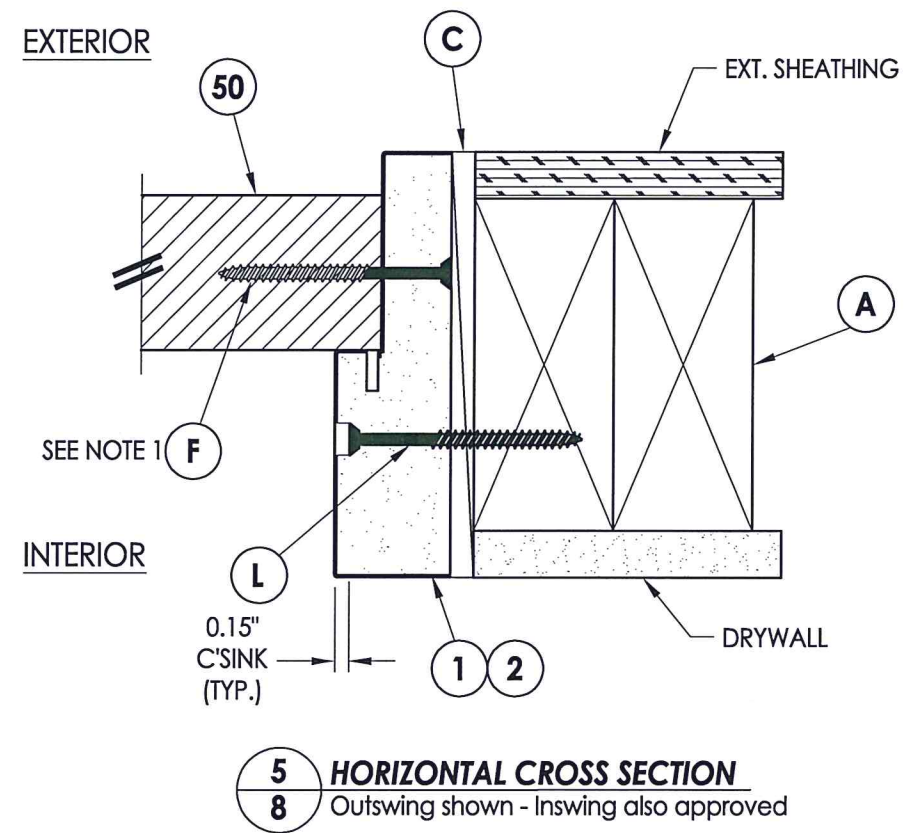
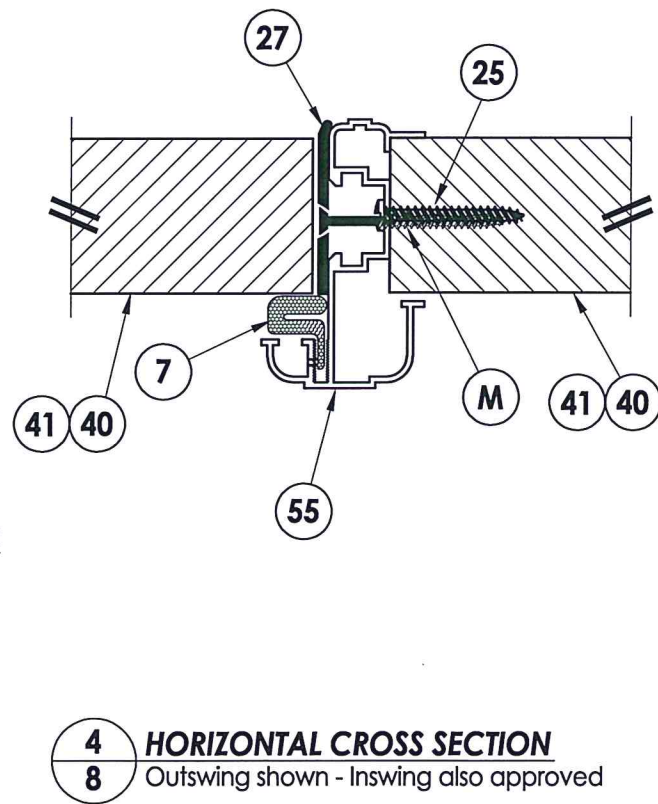
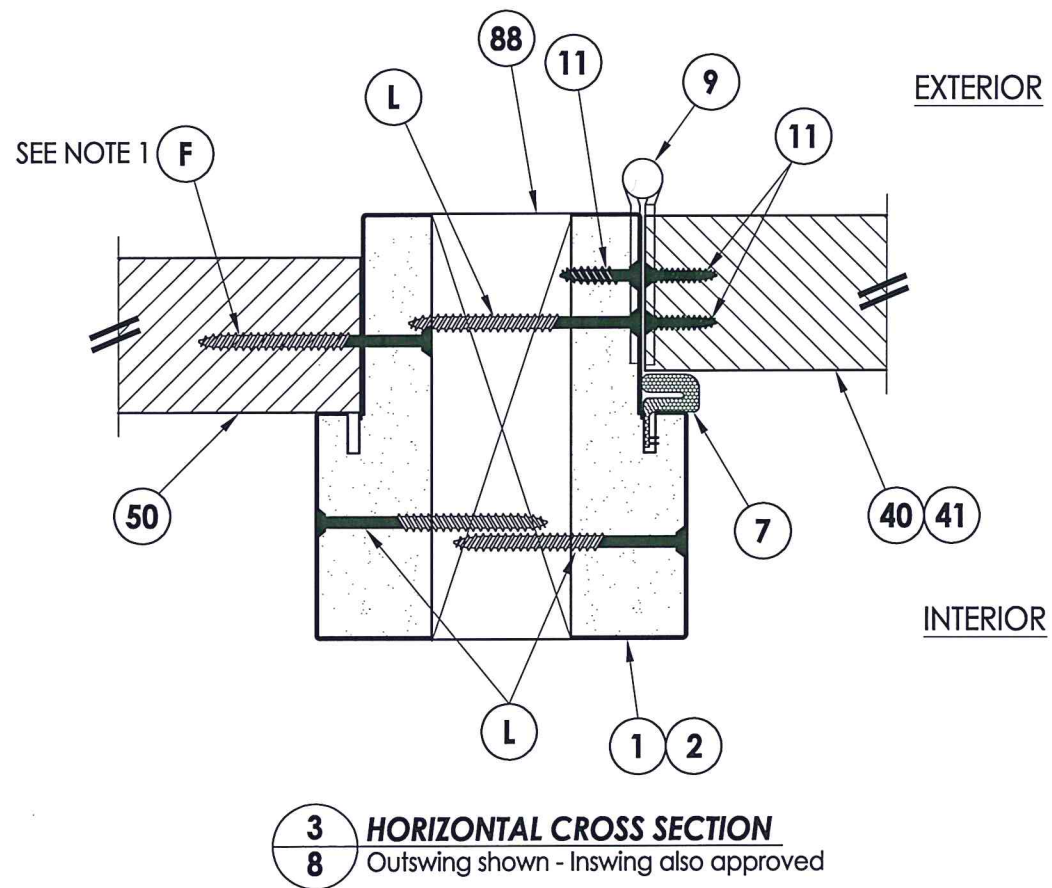
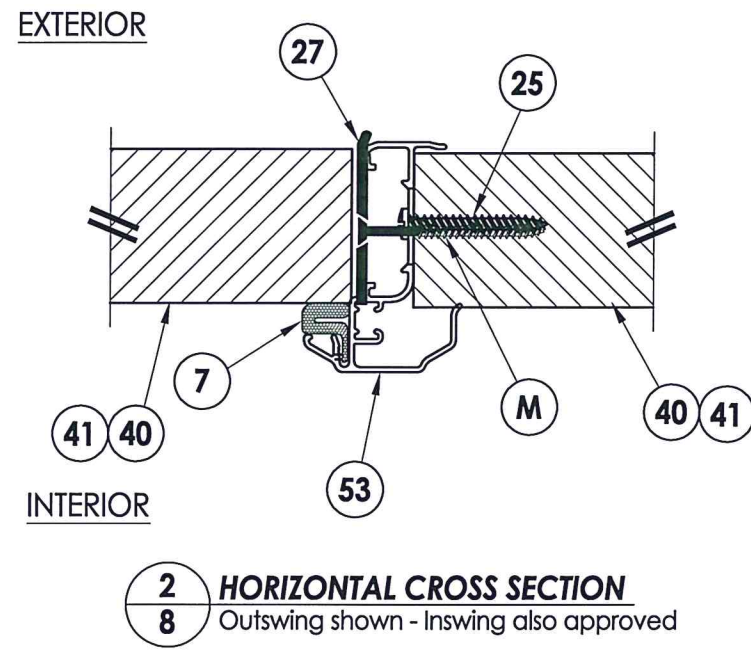
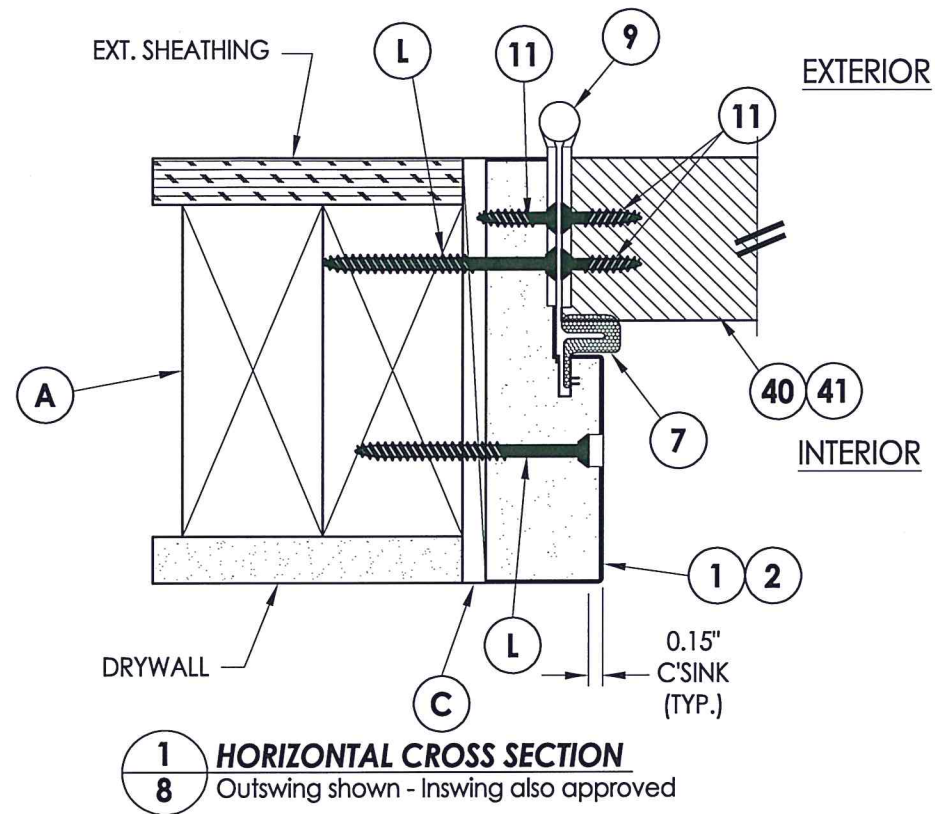
Documents Prepared By: Lyndon F. Schmidt, P.E.
TEXAS P.E. #104123

RW BUILDING CONSULTANTS, INC.
P.O. Box 230 Vairico FL 33595
Phone No.: 813.659.9197
TEXAS BOARD OF PROFESSIONAL ENGINEERS
CERTIFICATE OF REGISTRATION # F-11852

PRODUCT: PLASTPRO INC. FIBERGLASS DOOR
PART OR ASSEMBLY: ELEVATIONS

NO.	DATE	REVISIONS	BY
1	5/04/20	UPDATE TO 2018 IBC/IRC CODE	LFS

DATE: 11/29/12
SCALE: N.T.S.
DWG. BY: JK
CHK. BY: LFS
DRAWING NO.: TX-4284
SHEET 7 OF 14



NOTE:
 1. Spacing for item F: 6" from ends and 9 more equally spaced along sidelite (11 total).

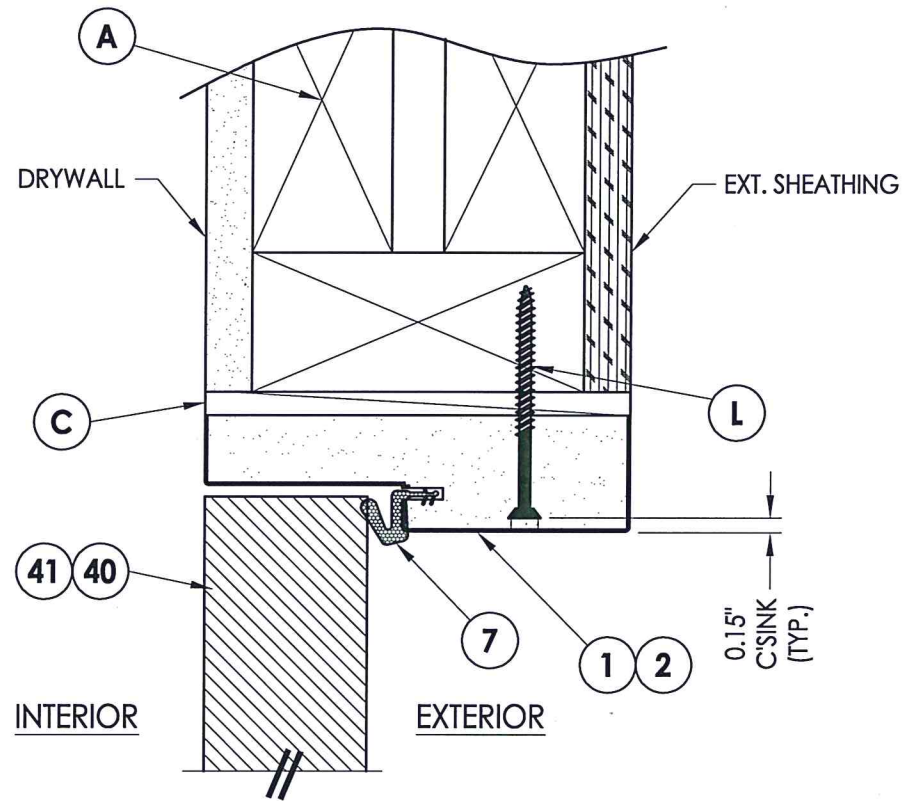


Documents Prepared By: Lyndon F. Schmidt, P.E.
 TEXAS P.E. #104123

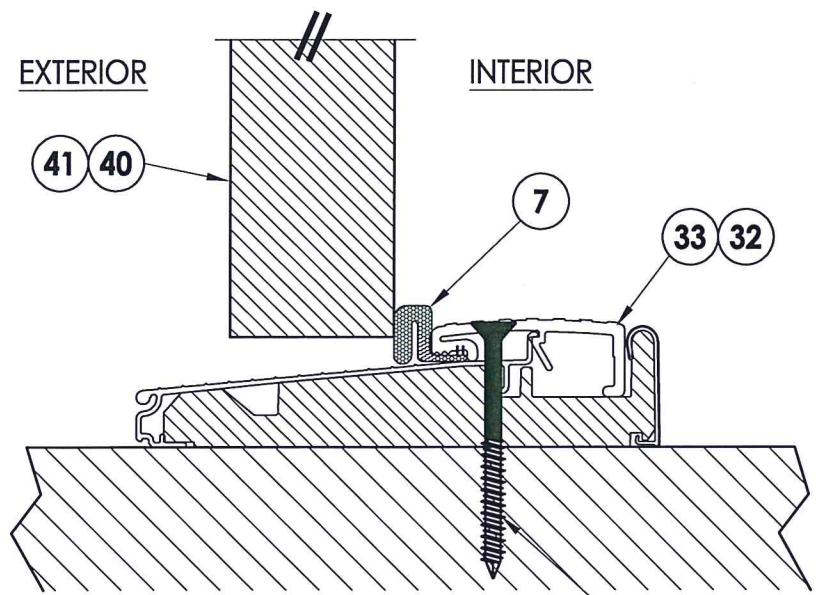
RW BUILDING CONSULTANTS, INC.
 P.O. Box 230 Vairico FL 33595
 Phone No.: 813.659.9197

TEXAS BOARD OF PROFESSIONAL ENGINEERS
 CERTIFICATE OF REGISTRATION # F-11852

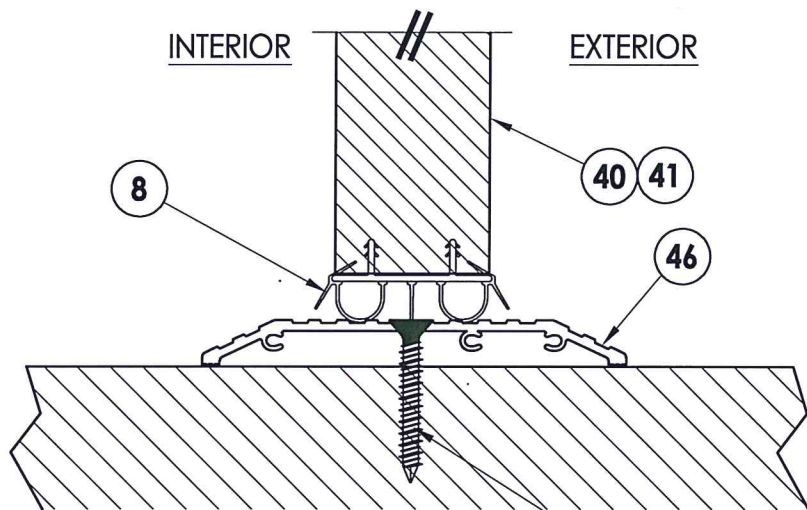
PRODUCT:	PLASTPRO INC. FIBERGLASS DOOR	
PART OR ASSEMBLY:	HORIZONTAL CROSS SECTIONS	
NO.	DATE	BY
1	5/04/20	LFS
UPDATE TO 2018 IBC/IRC CODE		
REVISIONS		
DATE:	11/29/12	
SCALE:	N.T.S.	
DWG. BY:	JK	
CHK. BY:	LFS	
DRAWING NO.:	TX-4284	
SHEET	8 OF 14	



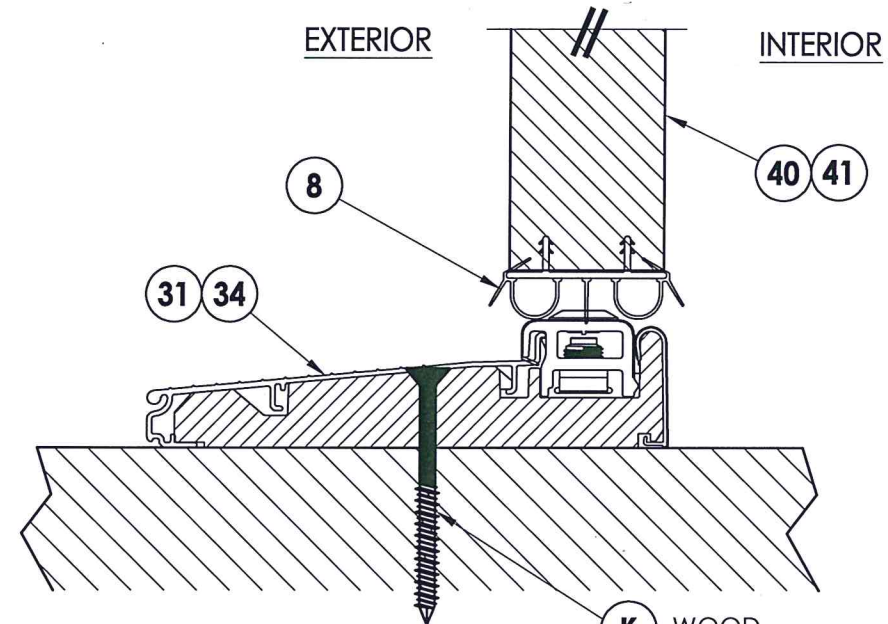
1 VERTICAL CROSS SECTION
9 Inswing shown - Outswing also approved



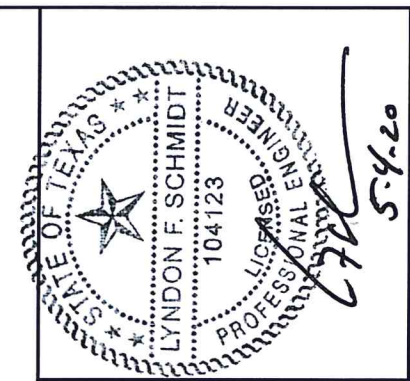
2 VERTICAL CROSS SECTION
9 Outswing configuration
K WOOD
D CONCRETE



4 VERTICAL CROSS SECTION
9 Shown w/ ADA threshold
K WOOD
D CONCRETE



3 VERTICAL CROSS SECTION
9 Inswing configuration
K WOOD
D CONCRETE



Documents Prepared By: Lyndon F. Schmidt, P.E.
 TEXAS P.E. #104123

RW BUILDING CONSULTANTS, INC.
 P.O. Box 230 Valrico FL, 33595
 Phone No.: 813.659.9197

TEXAS BOARD OF PROFESSIONAL ENGINEERS
 CERTIFICATE OF REGISTRATION # F-11852

PRODUCT: PLASTPRO INC.
 FIBERGLASS DOOR

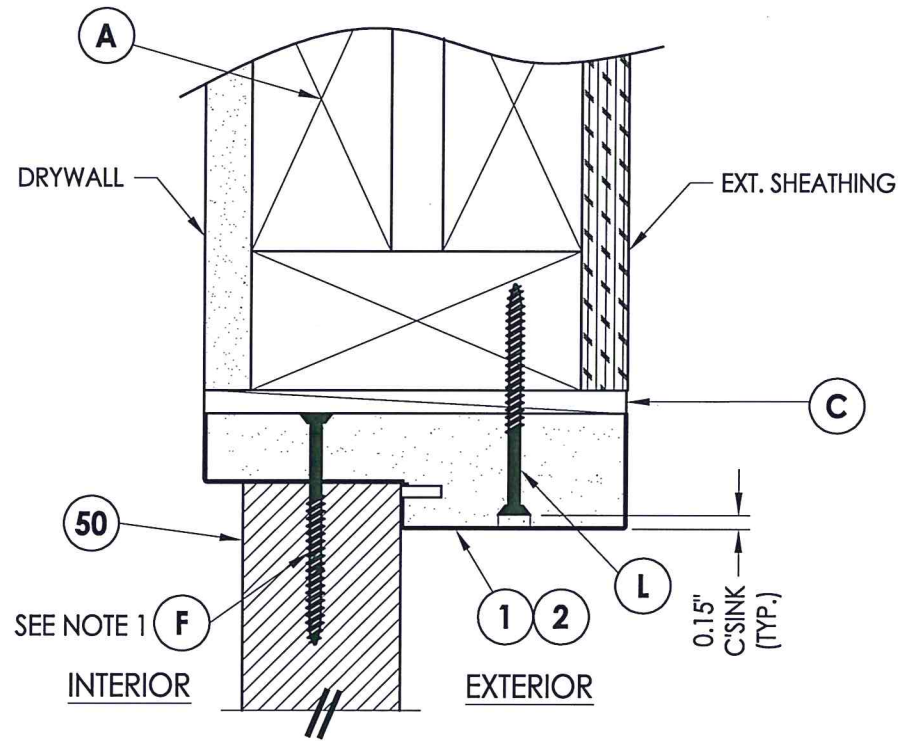
PART OR ASSEMBLY:
 VERTICAL CROSS SECTIONS

NO.	DATE	UPDATE TO 2018 IBC/IRC CODE	LFS	BY
1	5/04/20			

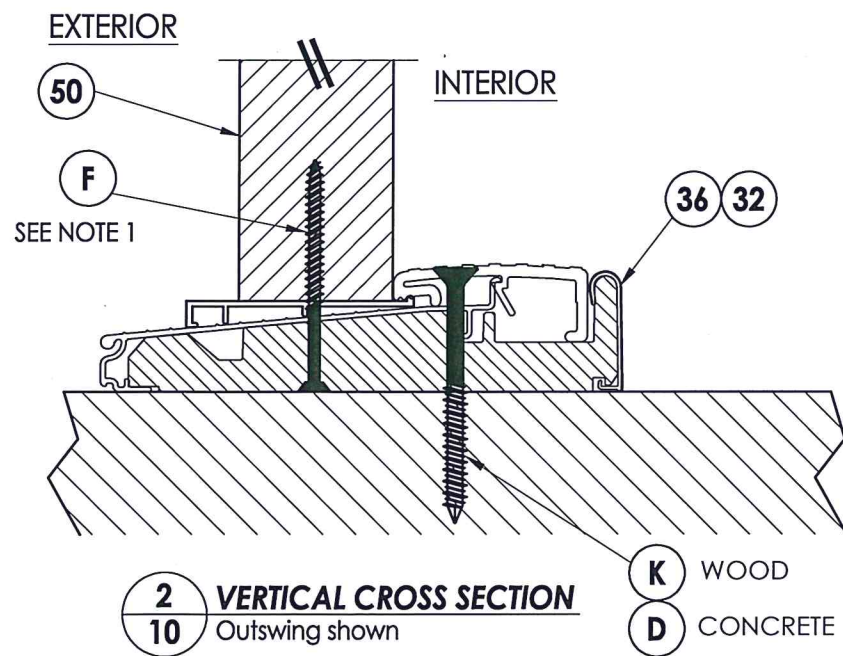
DATE: 11/29/12
 SCALE: N.T.S.
 DWG. BY: JK
 CHK. BY: LFS
 DRAWING NO.: TX-4284
 SHEET 9 of 14

R:\Clients\Plastpro, Inc PERMANENT B - TD\Hinged Doors - Fiberglass\DR - 626 Opaque Fiberglass (Impact)\C - Drawings\TX-4283-84.dwg, 10.2

NOTE:
1. Spacing for item F: 3" from each end.

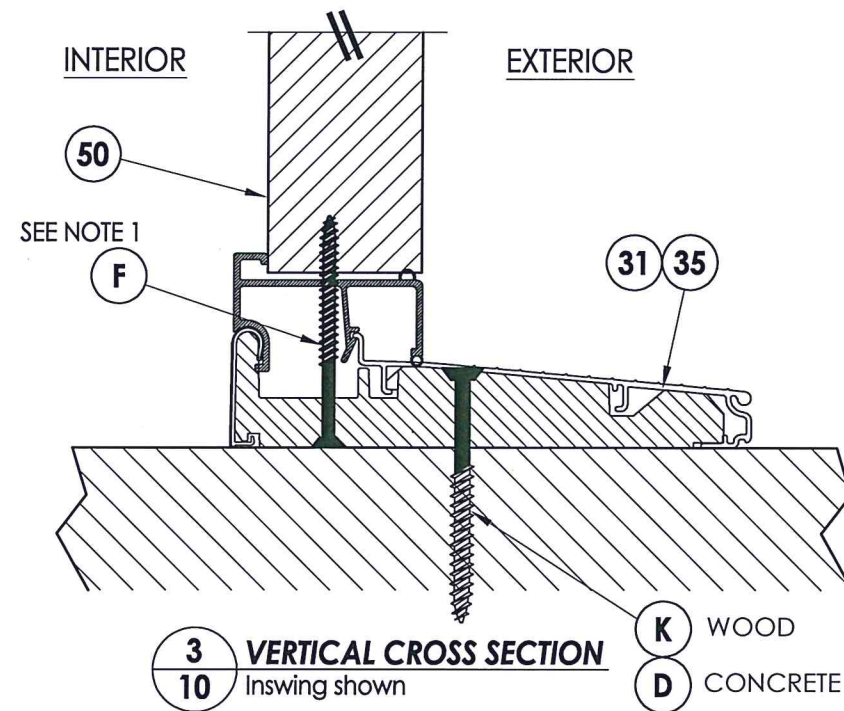


1 VERTICAL CROSS SECTION
10 Inswing shown - Outswing also approved



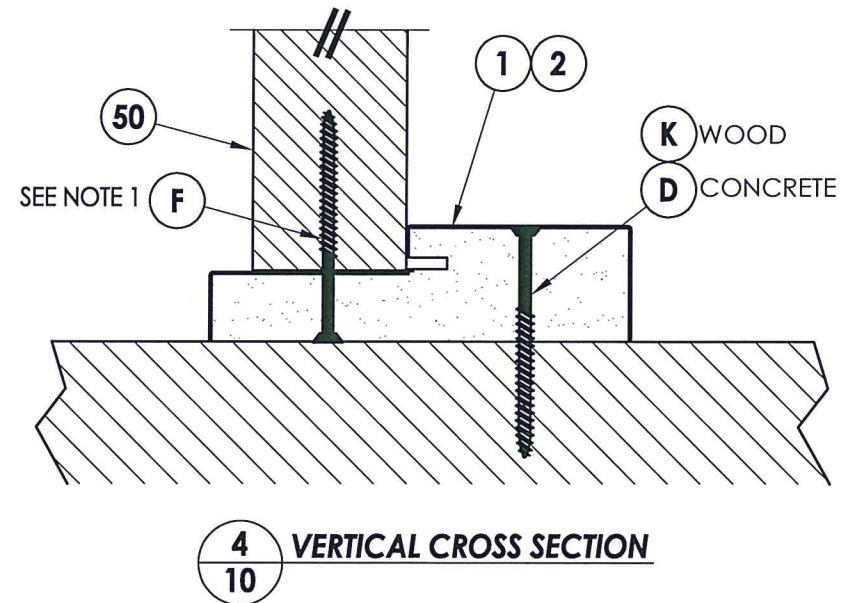
2 VERTICAL CROSS SECTION
10 Outswing shown

K WOOD
D CONCRETE



3 VERTICAL CROSS SECTION
10 Inswing shown

K WOOD
D CONCRETE



4 VERTICAL CROSS SECTION
10



Documents Prepared By: Lyndon F. Schmidt, P.E.
TEXAS P.E. #104123

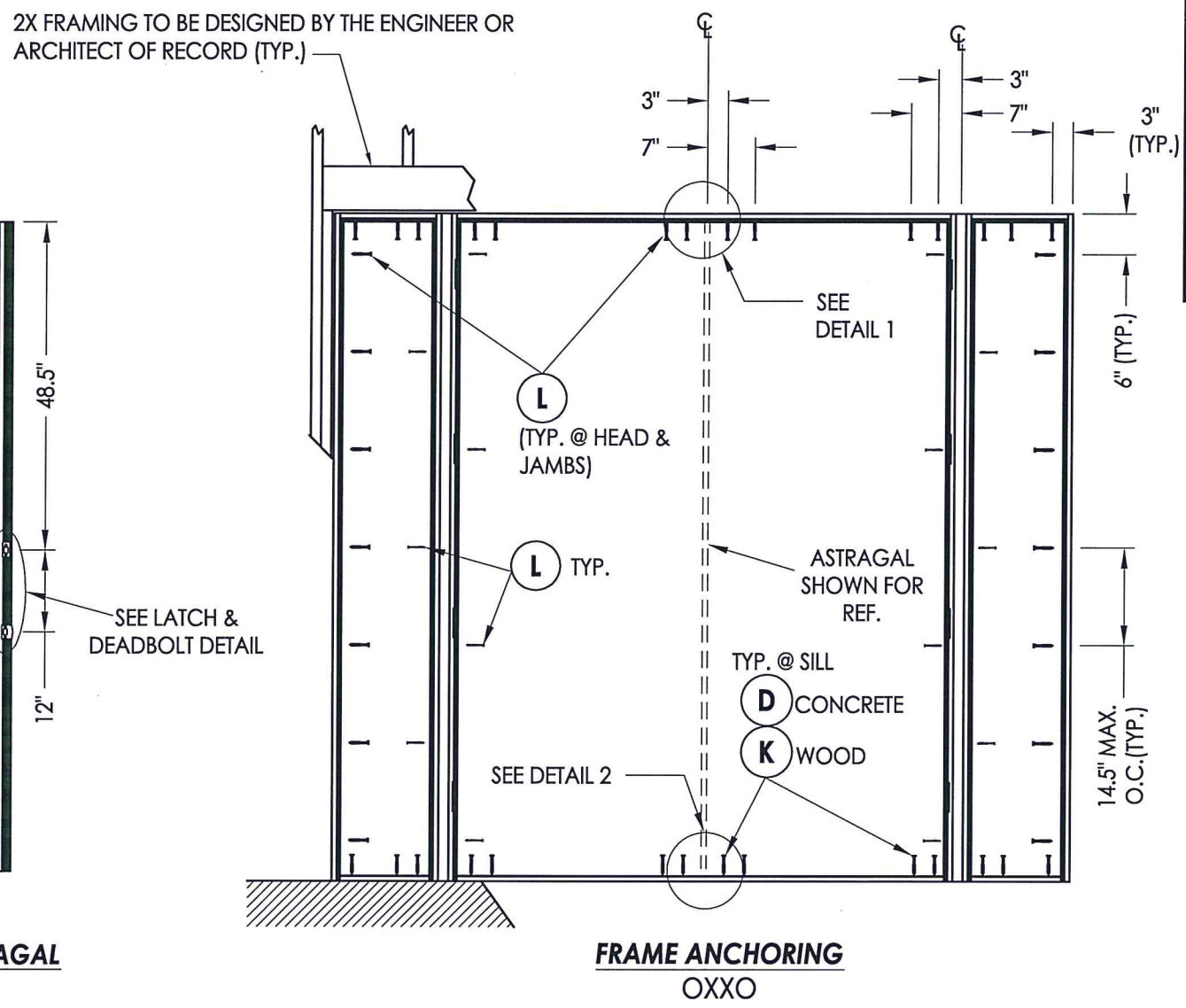
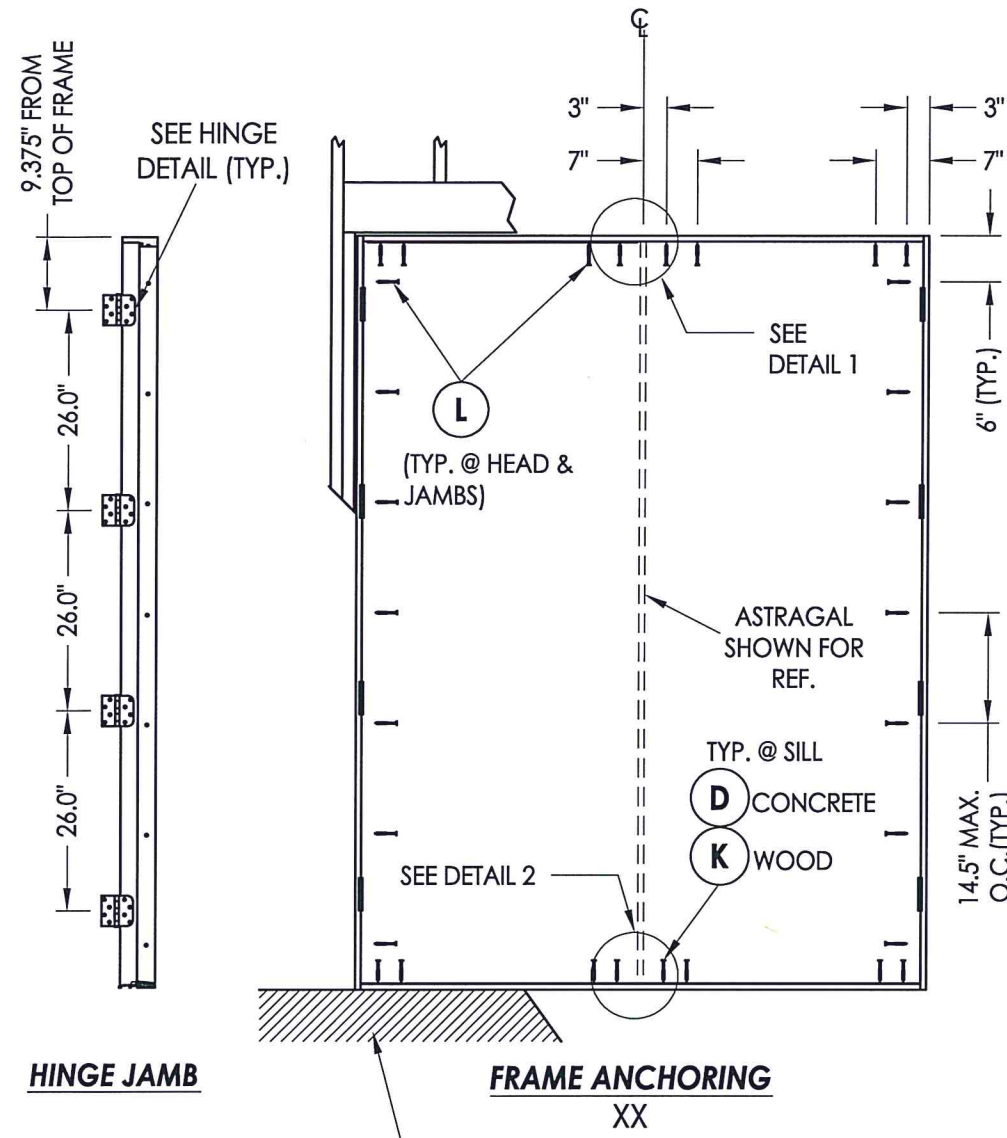
RW BUILDING CONSULTANTS, INC.
P.O. Box 230 Vairico FL. 33595
Phone No.: 813.659.9197
TEXAS BOARD OF PROFESSIONAL ENGINEERS
CERTIFICATE OF REGISTRATION # F-11852

PRODUCT: PLASTPRO INC. FIBERGLASS DOOR
PART OR ASSEMBLY: VERTICAL CROSS SECTIONS

NO.	DATE	REVISIONS
1	5/04/20	UPDATE TO 2018 IBC/IRC CODE
		LFS BY

DATE: 11/29/12
SCALE: N.T.S.
DWG. BY: JK
CHK. BY: LFS
DRAWING NO.: TX-4284
SHEET 10 OF 14

© 2012 R.W. BUILDING CONSULTANTS INC.



HINGE JAMB

**FRAME ANCHORING
XX**

ASTRAGAL

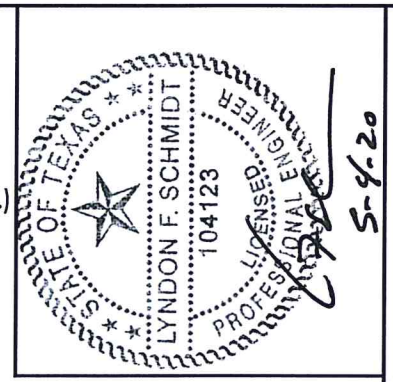
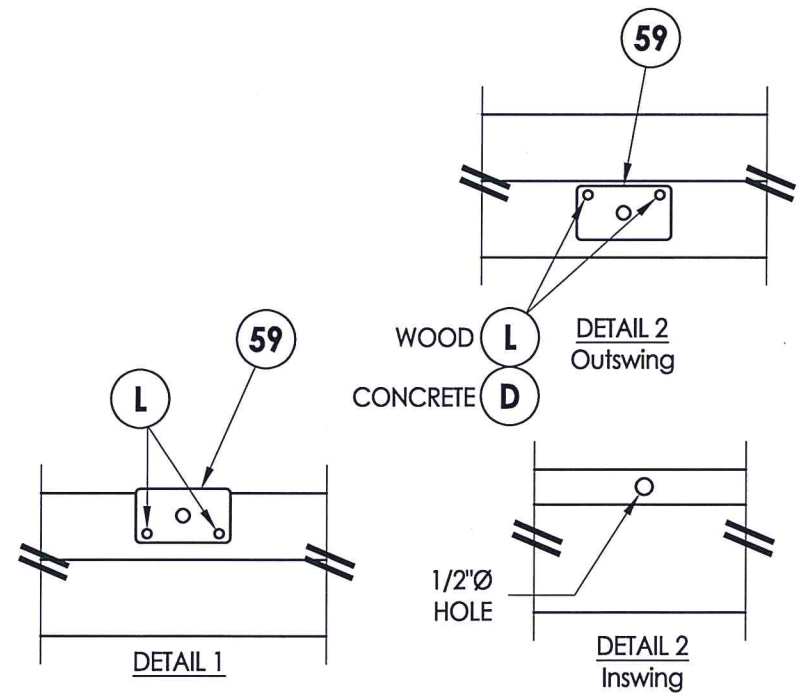
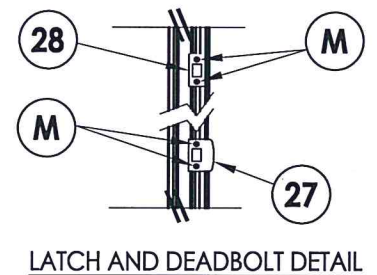
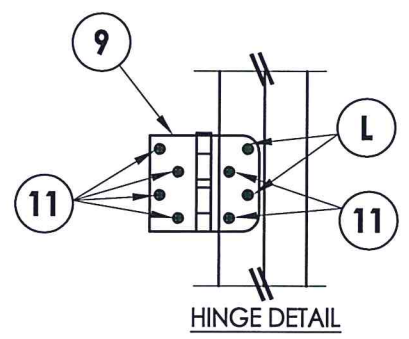
**FRAME ANCHORING
OXXO**

FLOOR SUBSTRATE MATERIAL (TYP.)
 CONCRETE (MIN. 3000 PSI)
 WOOD (S.G. >= 0.42)

CONCRETE ANCHOR NOTES:

1. Concrete anchor locations at the corners may be adjusted to maintain the min. edge distance to mortar joints.
2. Concrete anchor locations noted as "MAX. ON CENTER" must be adjusted to maintain the min. edge distance to mortar joints, additional concrete anchors may be required to ensure the "MAX. ON CENTER" dimension are not exceeded.
3. Concrete anchor table:

ANCHOR TYPE	ANCHOR SIZE	MIN. EMBEDMENT	MIN. CLEARANCE TO MASONRY EDGE	MIN. CLEARANCE TO ADJACENT ANCHOR
ITW TAPCON®	1/4"	1-3/4"	2-1/2"	3"
ELCO ULTRACON®	1/4"	1-3/4"	1"	3"



Documents Prepared By: Lyndon F. Schmidt, P.E.
 TEXAS P.E. #104123

RW BUILDING CONSULTANTS, INC.
 P.O. Box 230 Vairico FL 33595
 Phone No.: 813.659.9197

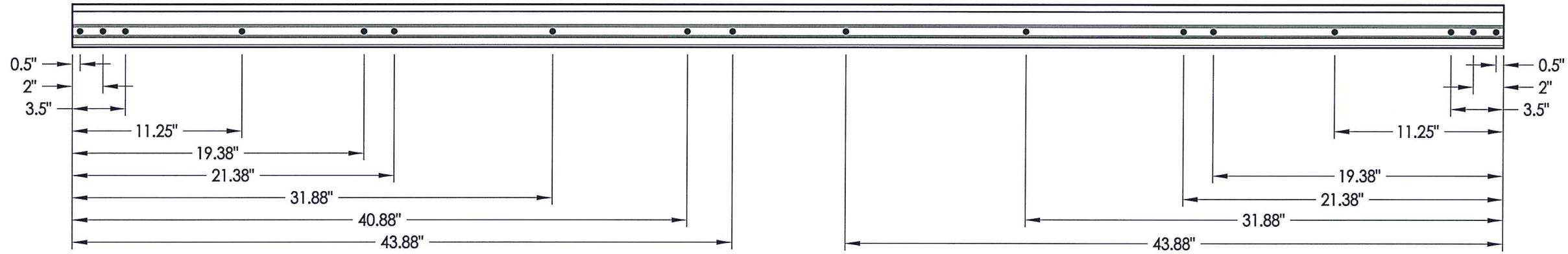
TEXAS BOARD OF PROFESSIONAL ENGINEERS
 CERTIFICATE OF REGISTRATION # F-11852

PRODUCT: PLASTPRO INC FIBERGLASS DOOR

PART OR ASSEMBLY: FRAME ANCHORING

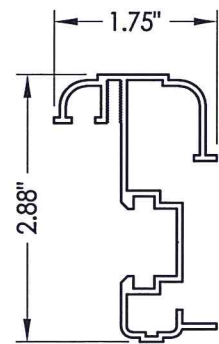
NO.	DATE	BY	REVISIONS
1	5/04/20	LFS	UPDATE TO 2018 IBC/IRC CODE

DATE: 11/29/12
 SCALE: N.T.S.
 DWG. BY: JK
 CHK. BY: LFS
 DRAWING NO.: TX-4284
 SHEET 11 OF 14

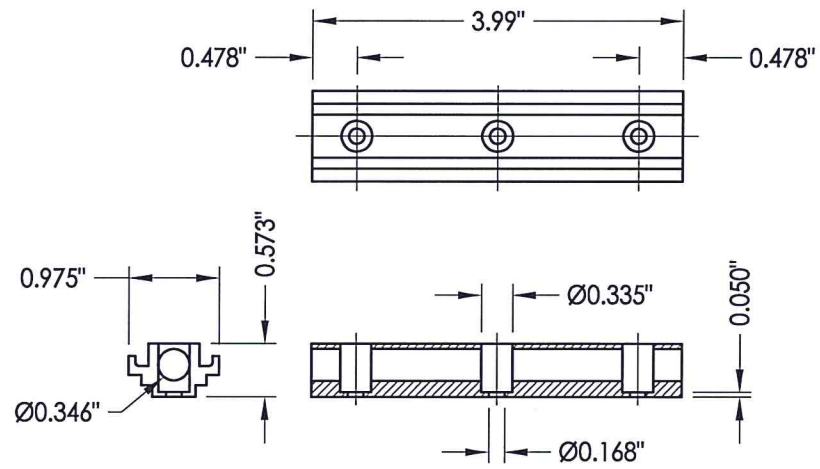


ASTRAL GAL DLP

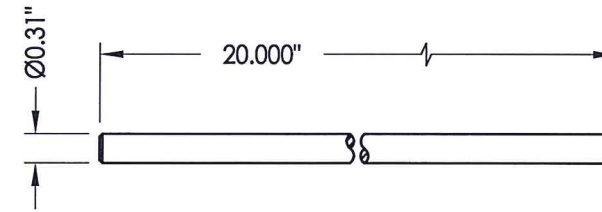
ASTRAL GAL SCREW LOCATIONS



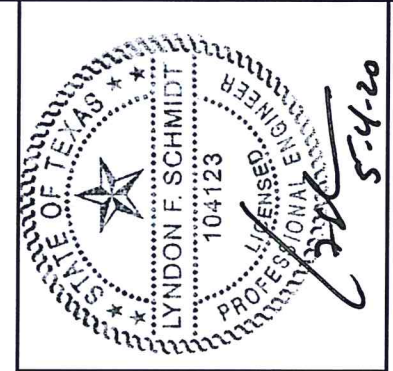
55 ASTRAGAL DLP



CONCEALED STIFFENER



SLIDE BOLT ROD
Typ. top & bottom of astragal
top through 2\", bottom through 2\"



Documents Prepared By: Lyndon F. Schmidt, P.E.
TEXAS P.E. #104123

RW BUILDING CONSULTANTS, INC.
P.O. Box 230 Valrico FL, 33595
Phone No.: 813.659.9197

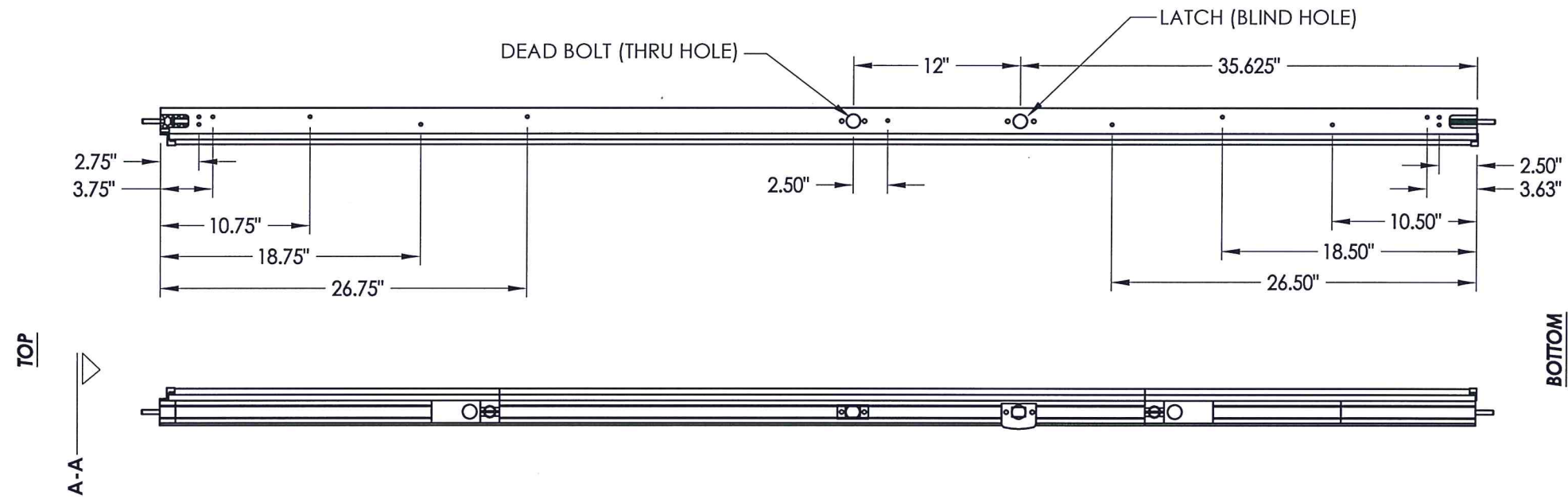
TEXAS BOARD OF PROFESSIONAL ENGINEERS
CERTIFICATE OF REGISTRATION # F-11852

PRODUCT: PLASTPRO INC.
FIBERGLASS DOOR

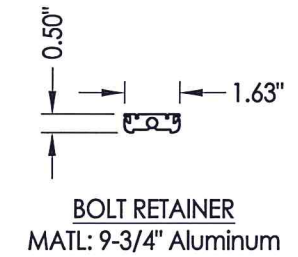
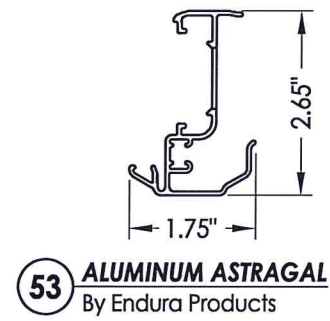
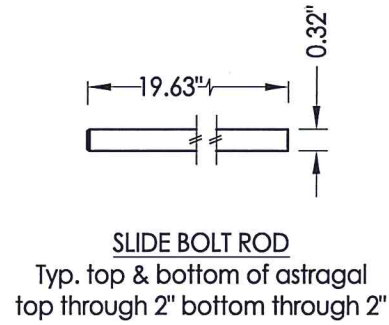
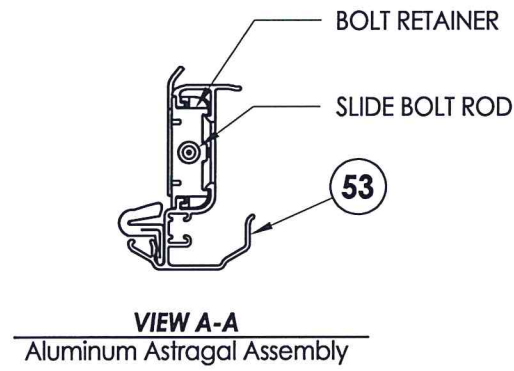
PART OR ASSEMBLY:
ASTRAL GAL DETAILS

NO.	DATE	DESCRIPTION	BY
1	5/04/20	UPDATE TO 2018 IBC/IRC CODE	LFS

DATE: 11/29/12
SCALE: N.T.S.
DWG. BY: JK
CHK. BY: LFS
DRAWING NO.: TX-4284
SHEET 12 OF 14



8'-0" ALUMINUM ASTRAGAL ASSEMBLY
By Endura Products



Documents Prepared By: Lyndon F. Schmidt, P.E.
TEXAS P.E. #104123

RW BUILDING CONSULTANTS, INC.
P.O. Box 230 Vairico FL, 33595
Phone No.: 813.659.9197

TEXAS BOARD OF PROFESSIONAL ENGINEERS
CERTIFICATE OF REGISTRATION # F-11852

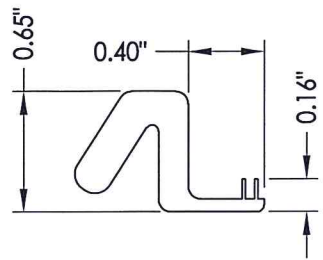
PRODUCT: PLASTPRO INC. FIBERGLASS DOOR
PART OR ASSEMBLY: ASTRAGAL DETAILS

NO.	DATE	DESCRIPTION	BY
1	5/04/20	UPDATE TO 2018 IBC/IRC CODE	LFS

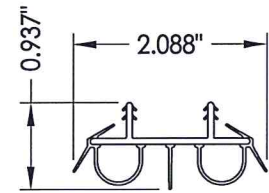
DATE: 11/29/12
SCALE: N.T.S.
DWG. BY: JK
CHK. BY: LFS
DRAWING NO.: TX-4284
SHEET 13 OF 14

BILL OF MATERIALS

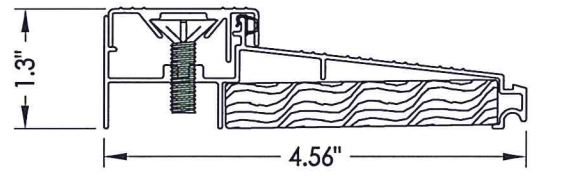
ITEM #	DESCRIPTION	MATERIAL
A	2X FRAMING (G >= 0.42)	WOOD
C	1/4" MAX. SHIM SPACE	-
D	1/4" ELCO OR ITW CONCRETE SCREW (1-3/4" MIN. EMBEDMENT)	STEEL
F	#9 X 2-1/2" PFH WOOD SCREW	STEEL
K	#10 X 3" PFH WOOD SCREW (1-1/2" MIN. EMBEDMENT)	STEEL
L	#10 X 2-1/2" PFH WOOD SCREW (1.15" MIN. EMBEDMENT)	STEEL
M	#8 X 2" PFH WOOD SCREW	STEEL
1	POLY FIBER JAMB	POLY FIBER
2	FINGER JOINTED PINE JAMB	WOOD
7	WEATHERSTRIP	FOAM
8	DOOR BOTTOM SWEEP	VINYL
9	4" X 4" BUTT HINGE	STEEL
11	#9 X 3/4" PFH WOOD SCREW	STEEL
25	#10 X 1-1/2" PH SMS	STEEL
27	LATCH STRIKE PLATE	STEEL
28	DEADBOLT STRIKE PLATE	STEEL
31	INSWING ADJUSTABLE THRESHOLD	ALUM / WOOD
32	OUTSWING THRESHOLD	ALUM / WOOD
33	OUTSWING THRESHOLD	ALUM / COMP
34	INSWING ADJUSTABLE THRESHOLD	ALUM / COMP
35	INSWING ADJUSTABLE THRESHOLD w/ SIDELITE ADAPTER	ALUM / COMP
36	OUTSWING THRESHOLD w/ SIDELITE ADAPTER	ALUM / COMP
40	DOOR PANEL - SEE DOOR PANEL DETAIL SHEET FOR CONSTRUCTION DETAILS	-
41	DOOR PANEL - SEE DOOR PANEL DETAIL SHEET FOR CONSTRUCTION DETAILS	-
46	ADA THRESHOLD	ALUM
50	SIDELITE PANEL - SEE SIDELITE PANEL DETAIL SHEET FOR CONSTRUCTION DETAILS	-
53	ASTRAGAL (Endura Products)	ALUM
55	ASTRAGAL (DLP)	ALUM
59	ASTRAGAL STRIKE PLATE	STEEL
61	ODL LITE FRAME	ALUM
62	RSL LITE FRAME	PVC
88	2X REINFORCEMENT (G >= 0.55)	WOOD



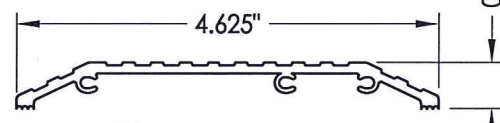
7 WEATHERSTRIP
Endura Force 5



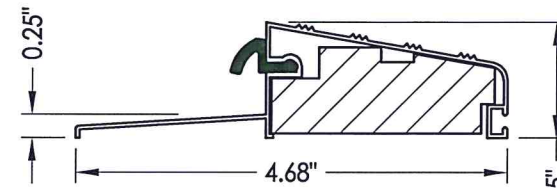
8 DOOR BOTTOM SWEEP



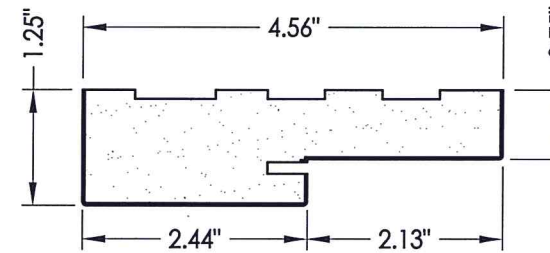
31 INSWING THRESHOLD
DLP (ISCS)



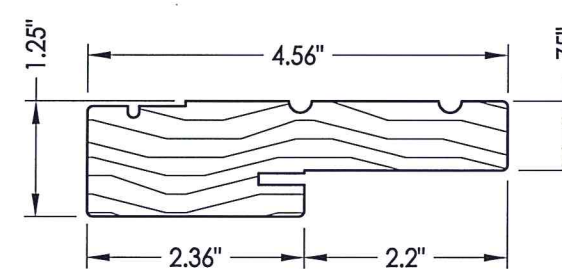
46 ADA THRESHOLD
DLP



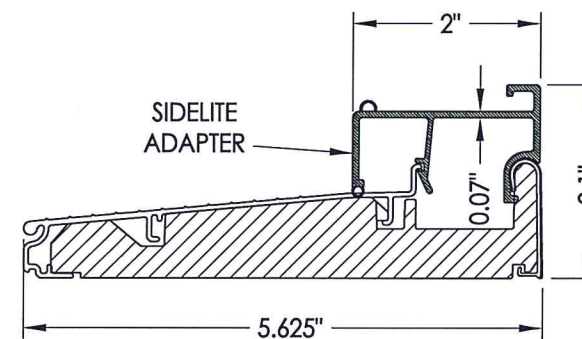
32 OUTSWING THRESHOLD
DLP (QOSH)



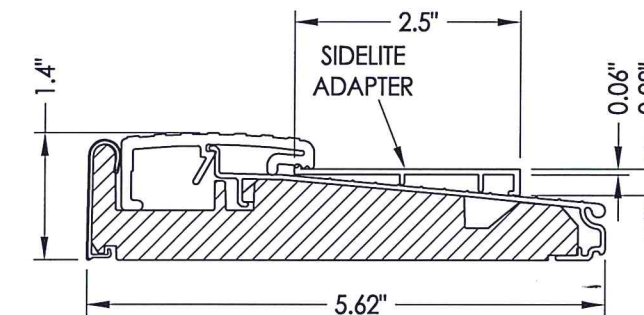
1 HEAD & SIDE
Poly fiber jamb



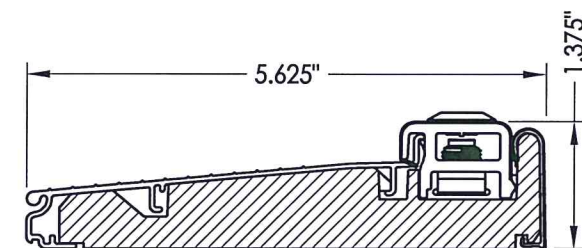
2 WOOD JAMB



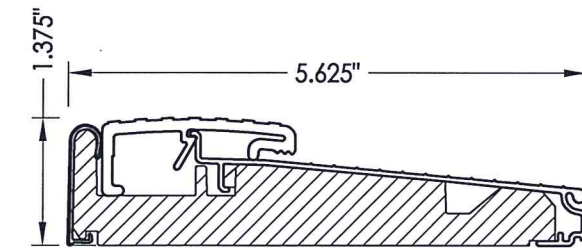
35 INSWING THRESHOLD w/ SIDELITE ADAPTER
Endura (Z-Series)



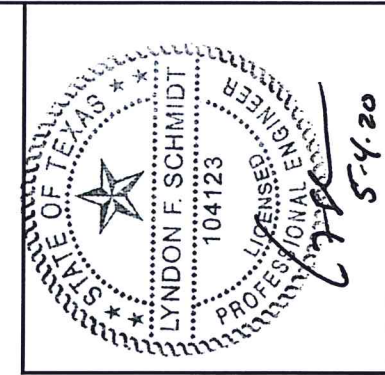
36 OUTSWING THRESHOLD w/ SIDELITE ADAPTER
Endura (Z-Series)



34 ADJUSTABLE INSWING THRESHOLD
Endura (Z-Series)



33 OUTSWING THRESHOLD
Endura (Z-Series)



Documents Prepared By: Lyndon F. Schmidt, P.E.
TEXAS P.E. #104123

RW BUILDING CONSULTANTS, INC.
P.O. Box 230 Valrico FL 33595
Phone No.: 813.659.9197
TEXAS BOARD OF PROFESSIONAL ENGINEERS
CERTIFICATE OF REGISTRATION # F-11852

PRODUCT: PLASTPRO INC. FIBERGLASS DOOR
PART OR ASSEMBLY: BILL OF MATERIALS AND COMPONENTS

NO.	DATE	DESCRIPTION	BY
1	5/04/20	UPDATE TO 2018 IBC/IRC CODE	LFS

DATE: 11/29/12
SCALE: N.T.S.
DWG. BY: JK
CHK. BY: LFS
DRAWING NO.: TX-4284
SHEET 14 OF 14