

# WINCORE™

## WINDOWS & DOORS

250 Staunton Turnpike, Parkersburg, WV 26104

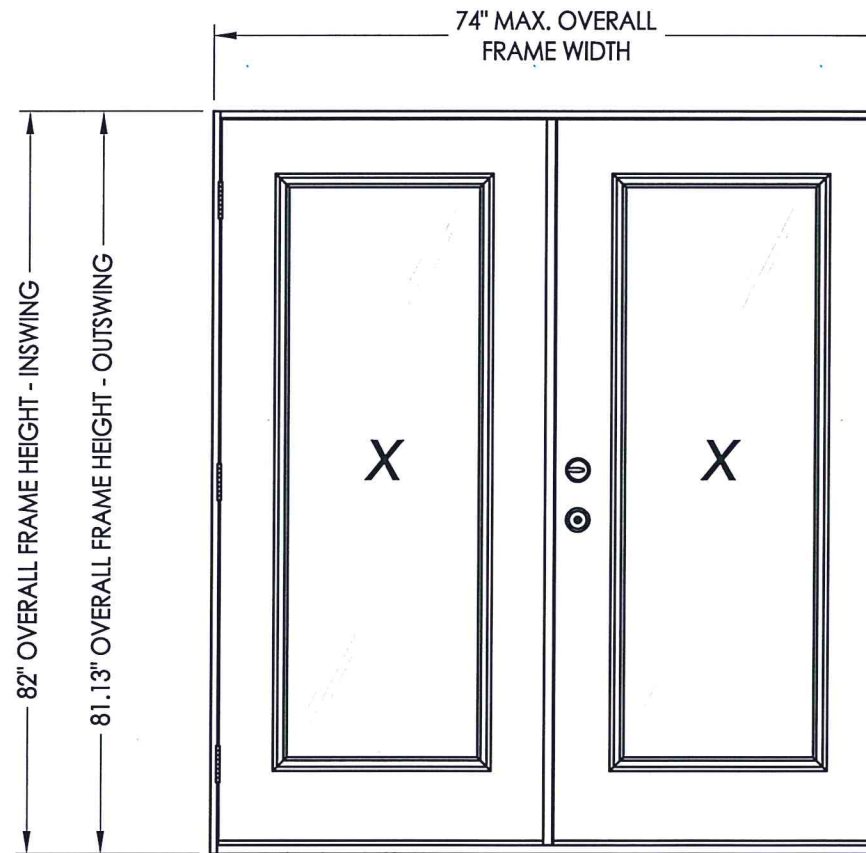
### FIBERGLASS ENTRY DOOR IN SWING / OUT SWING "IMPACT"

#### EVALUATED FOR USE IN THE STATE OF TEXAS

The Wincore Fiberglass Door described herein complies with the 2018 International Residential Code (IRC), Sections R301 & R609 and the 2018 International Building Code (IBC), Sections 1404.13, 1609, 1709.5, 2403 and 2404 subject to the following conditions:

1. Anchors shall be as listed and spaced as shown in the details. Anchor embedment to base material shall be beyond wall dressing or stucco.
2. This system has been tested and evaluated as a large missile impact protective system for installation in the Seaward, Inland I and Inland II areas. This product meets missile level "D" as defined in ASTM E 1996.
3. Allowable design pressure requirements must be equal to or less than the design pressure rating shown in the design pressure chart, sheet 1 of this drawing.
4. Conditions not covered by this drawing are subject to further engineering analysis.

TABLE OF CONTENTS	
SHEET #	DESCRIPTION
1	Typical elevation, design pressures, & general notes
2	Door panel details
3	Horizontal cross section
4	Vertical cross sections
5	3-point lock details
6	3-point lock details
7	Frame anchoring
8	Astragal details
9	Bill of materials & components



CONFIGURATION	MAX. FRAME DIMENSION	DESIGN PRESSURE (PSF) IN SWING		DESIGN PRESSURE (PSF) OUT SWING	
		POSITIVE	NEGATIVE	POSITIVE	NEGATIVE
XX	74" x 82"	+55.0	-55.0	+55.0	-55.0

See sheet 2 for hardware design pressure limitations



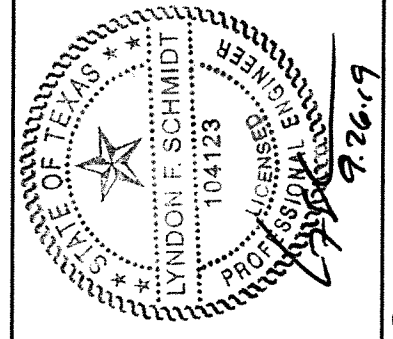
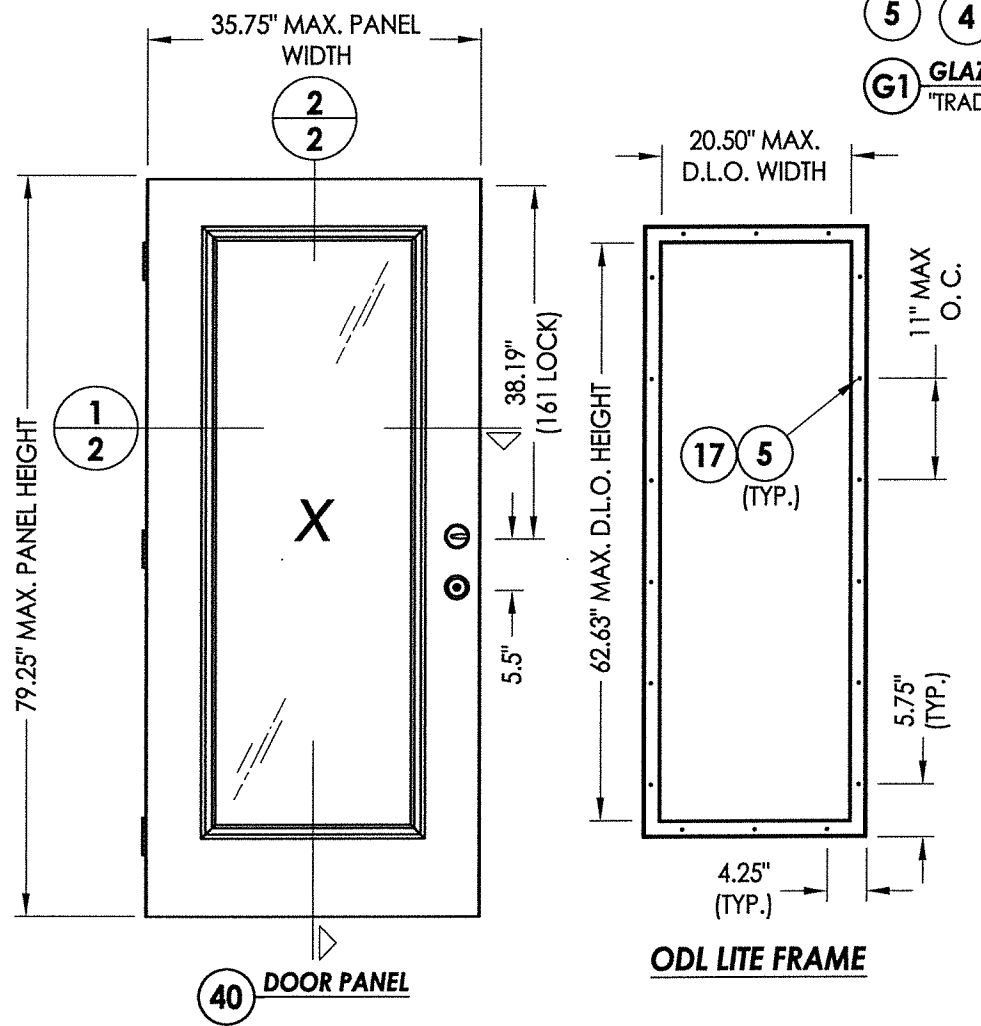
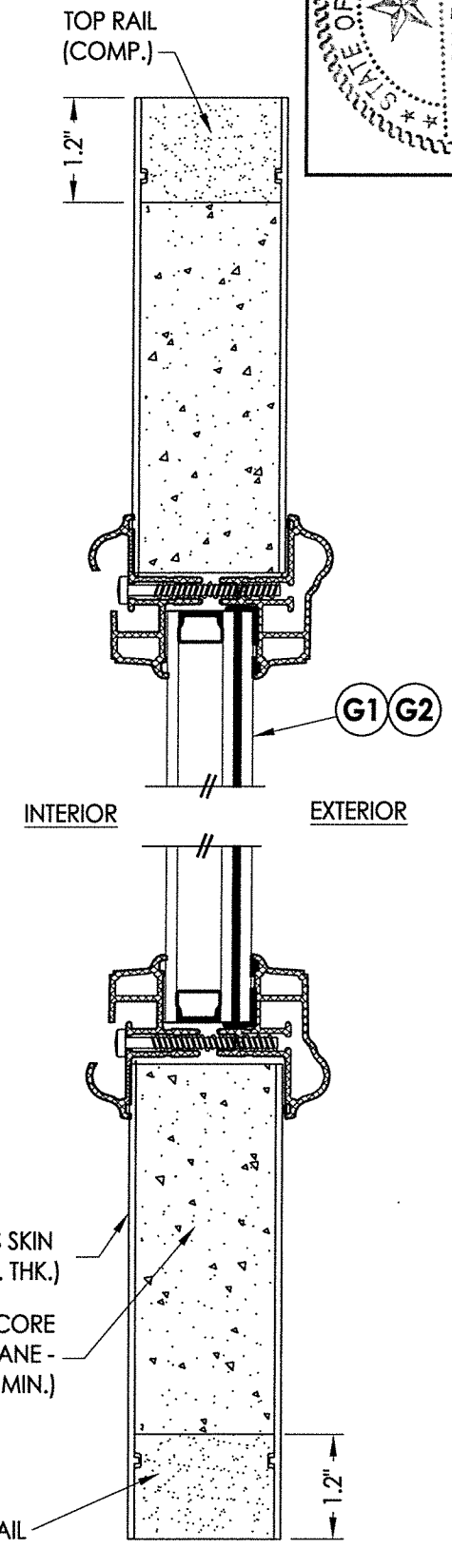
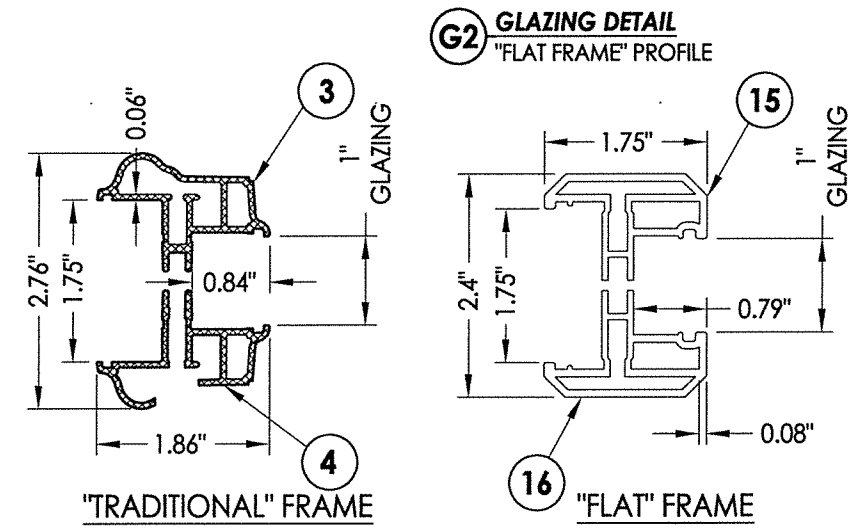
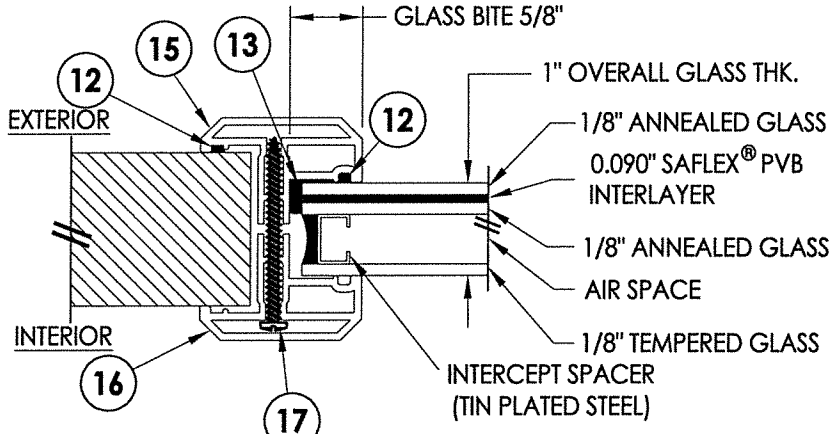
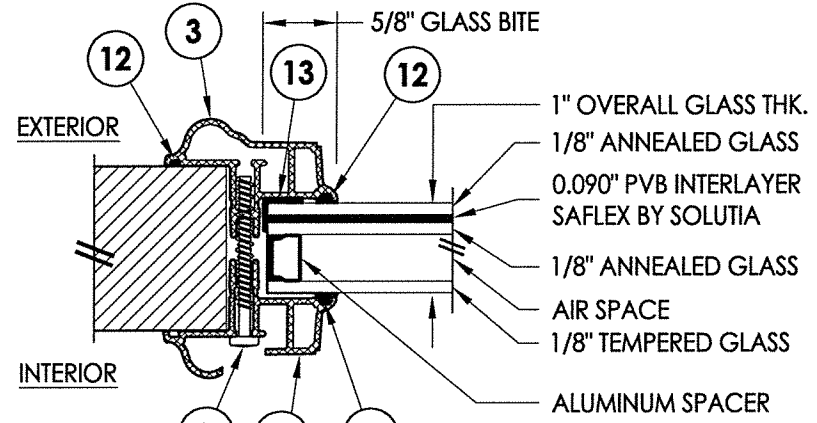
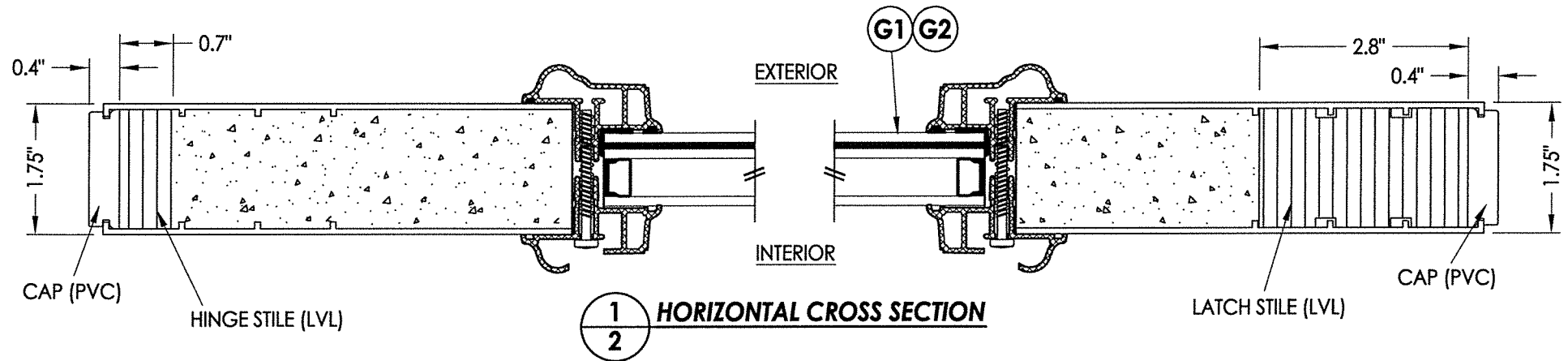
Documents Prepared By: Lyndon F. Schmidt, P.E.  
TEXAS P.E. #104123

RW BUILDING CONSULTANTS, INC.  
P.O. Box 230 Valrico FL 33595  
Phone No.: 813.659.9197

TEXAS BOARD OF PROFESSIONAL ENGINEERS  
CERTIFICATE OF REGISTRATION # F-11852

PRODUCT:		WINCORE FIBERGLASS DOOR	
PART OR ASSEMBLY:		LFS BY	
TYPICAL ELEVATION, DESIGN PRESSURES & GENERAL NOTES		REVISIONS	
NO.	DATE	ADD FLAT FRAME & UPDATE TO 2018 IBC	BY
1	9/18/19		
DATE: 05/30/12		SCALE: N.T.S.	
DWG. BY: JK		CHK. BY: LFS	
DRAWING NO.: TX-4163		SHEET 1 OF 9	

R:\Clients\Wincore PERMANENT\B - Texas Dept of Ins\Doors\DR-556 - Glazed FG Entry Doors\C - Drawings\RWBC Drawings\TX-4163 REV.dwg, 2.6



Documents Prepared By: Lyndon F. Schmidt, P.E.  
TEXAS P.E. #104123

**RW** BUILDING CONSULTANTS, INC.  
P.O. Box 230 Vairico FL 33595  
Phone No.: 813.659.9197

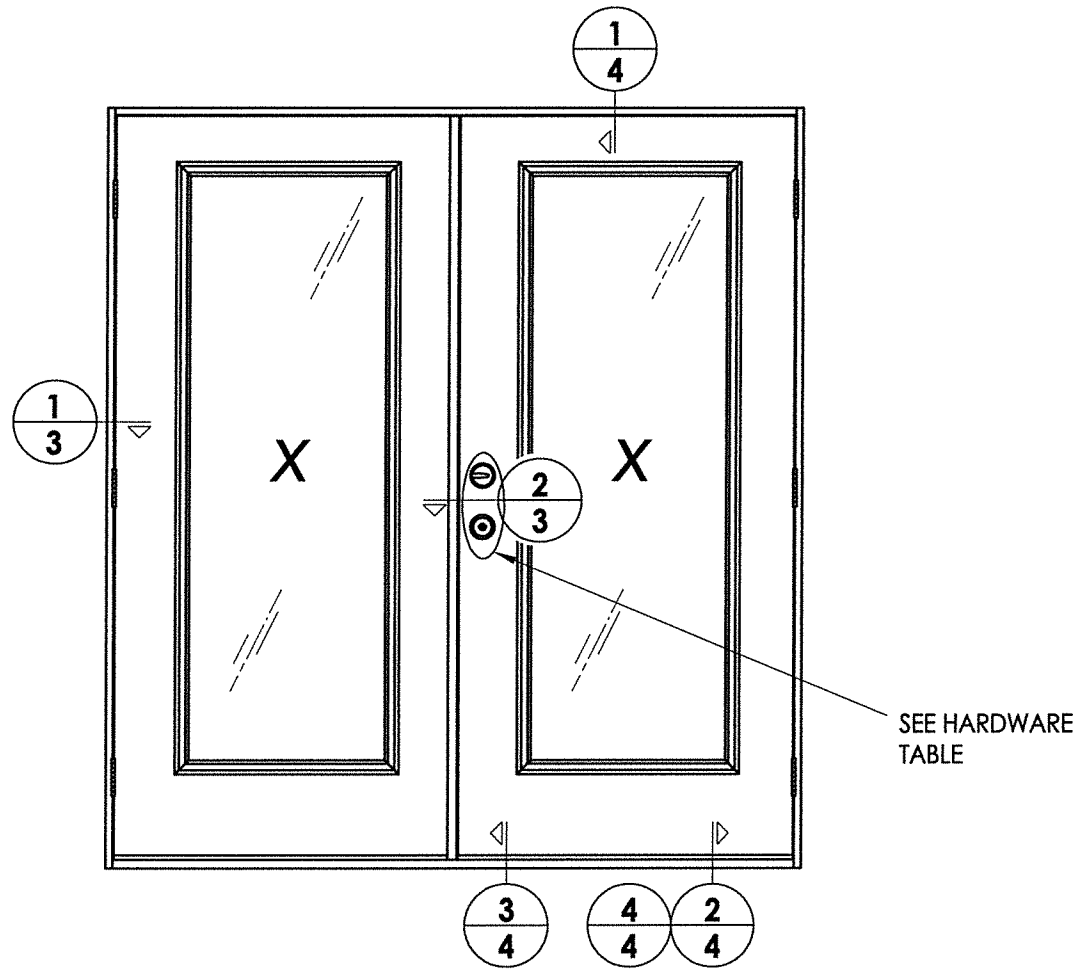
TEXAS BOARD OF PROFESSIONAL ENGINEERS  
CERTIFICATE OF REGISTRATION # F-11852

PRODUCT: WINCORE FIBERGLASS DOOR

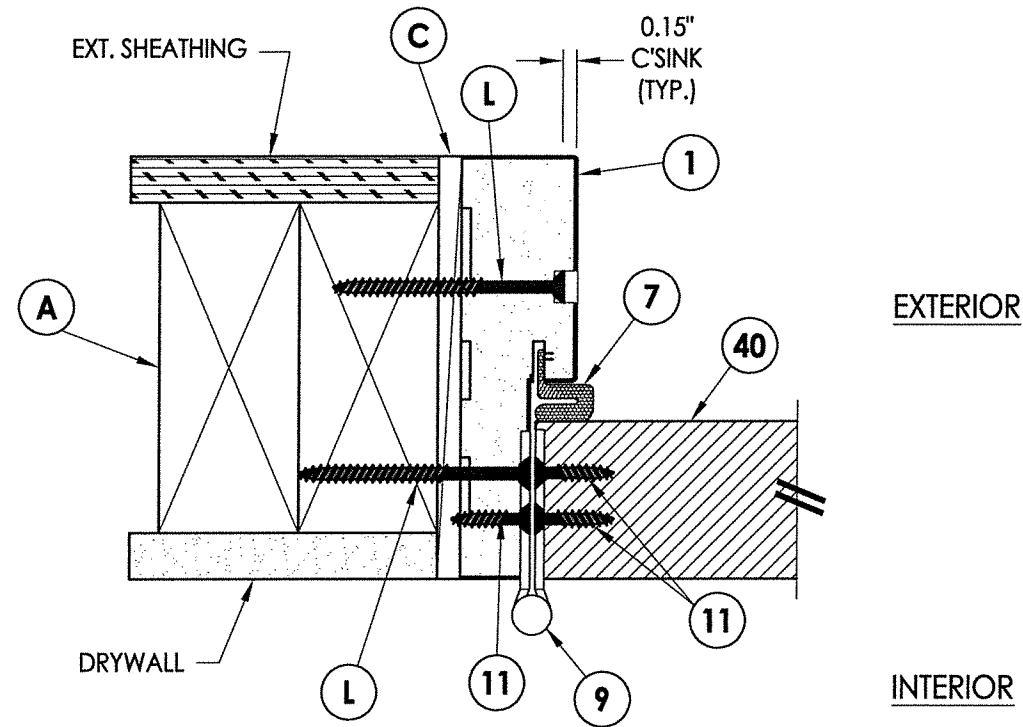
PART OR ASSEMBLY: DOOR PANEL DETAILS

NO.	DATE	REVISIONS
1	9/18/19	ADD FLAT FRAME & UPDATE TO 2018 IBC

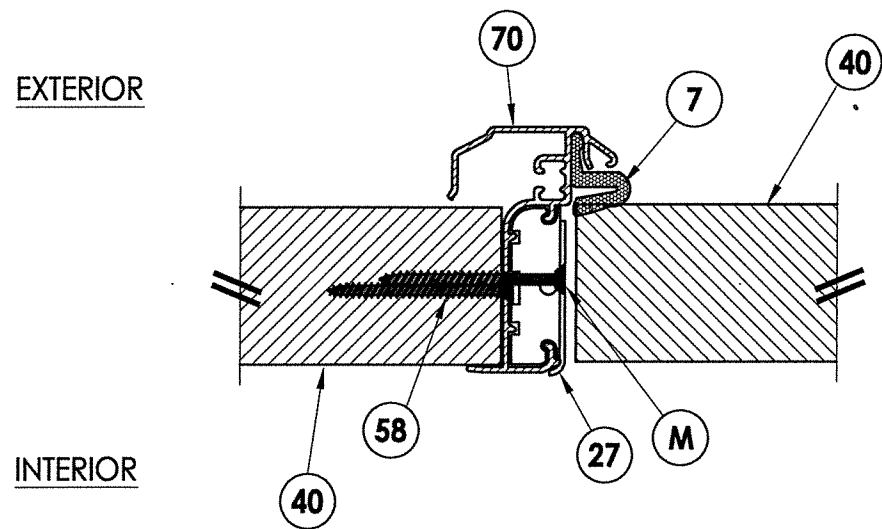
DATE: 05/30/12  
SCALE: N.T.S.  
DWG. BY: JK  
CHK. BY: LFS  
DRAWING NO.: TX-4163  
SHEET 2 OF 9



ELEVATION (XX)



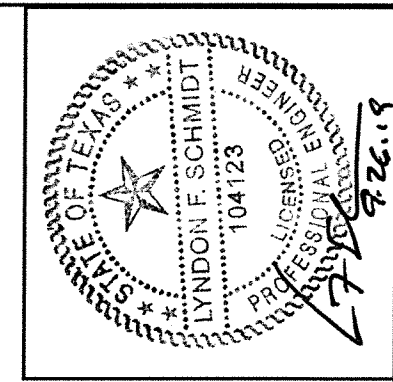
**1** HORIZONTAL CROSS SECTION  
**3** Inswing shown - outswing also approved



**2** HORIZONTAL CROSS SECTION  
**3** Inswing shown - outswing also approved

HARDWARE TABLE		
MANUFACTURER	MODEL	MAX. DESIGN PRESSURE (PSF)
KWIKSET	KNOB:	SIGNATURE SERIES
	DEADBOLT:	SIGNATURE SERIES (980)
SCHLAGE	KNOB:	"F" SERIES (F51)
	DEADBOLT:	"B" SERIES (B60/62)
PAMEX	LEVER:	FL3B SERIES
	DEADBOLT:	FD7 SERIES
HOPPE	MULTI-POINT LOCK:	3-POINT TONGUE
W & F	MULTI-POINT LOCK:	TRILENNIUM "3000" SERIES

See sheets 5 and 6 for multi-point lock details.



Documents Prepared By: Lyndon F. Schmidt, P.E.  
 TEXAS P.E. #104123

**R.W.** BUILDING CONSULTANTS, INC.  
 P.O. Box 230 Valrico FL 33595  
 Phone No.: 813-659-9197

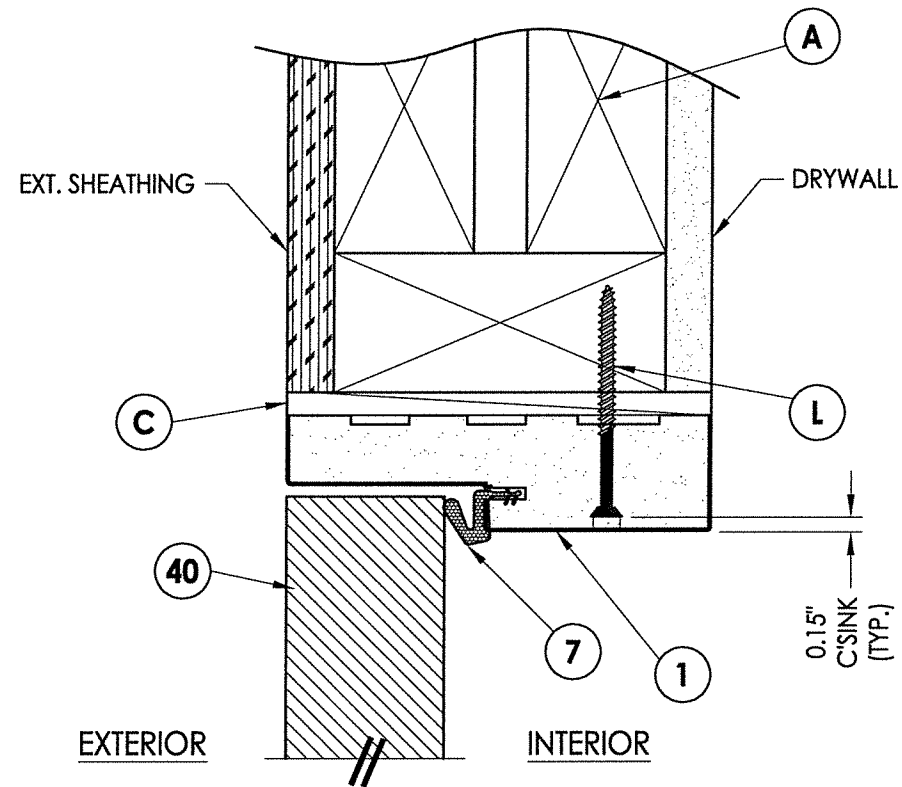
TEXAS BOARD OF PROFESSIONAL ENGINEERS  
 CERTIFICATE OF REGISTRATION # F-11852

PRODUCT: WINCORE FIBERGLASS DOOR

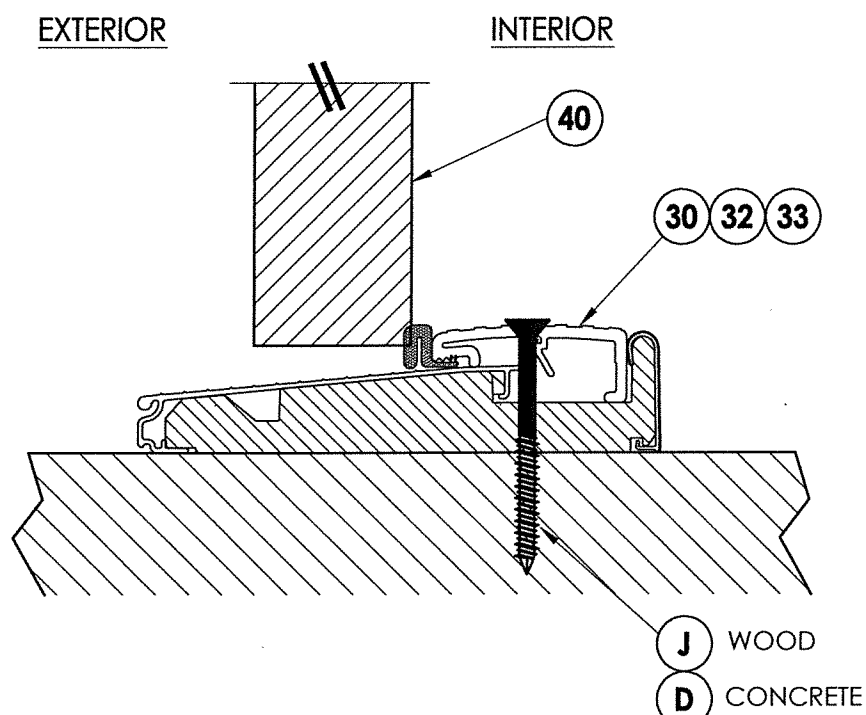
PART OR ASSEMBLY: ELEVATIONS

NO.	DATE	REVISIONS
1	9/18/19	ADD FLAT FRAME & UPDATE TO 2018 IBC

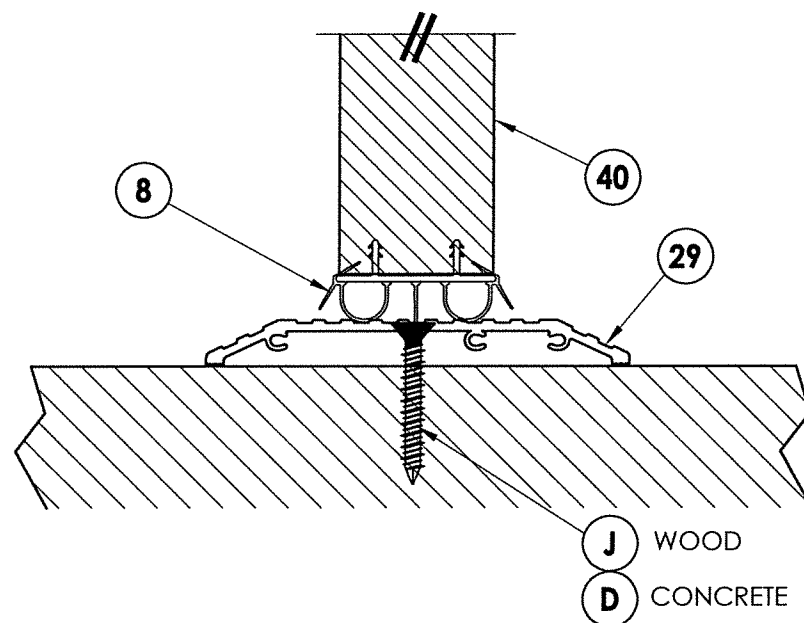
DATE: 05/30/12  
 SCALE: N.T.S.  
 DWG. BY: JK  
 CHK. BY: LFS  
 DRAWING NO.: TX-4163  
 SHEET 3 OF 9



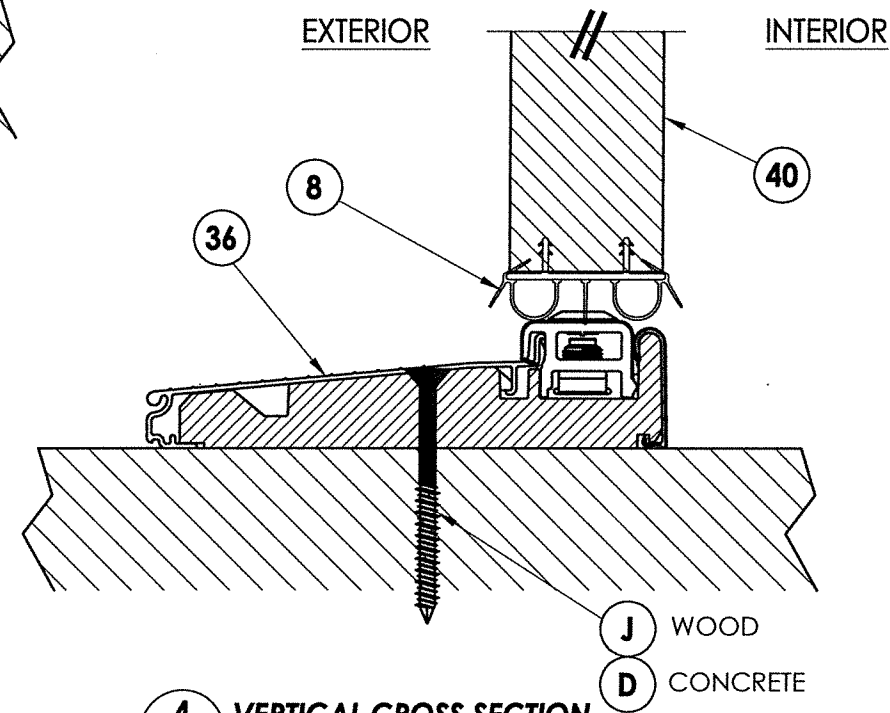
**1 VERTICAL CROSS SECTION**  
**4** Outswing shown - inswing also approved



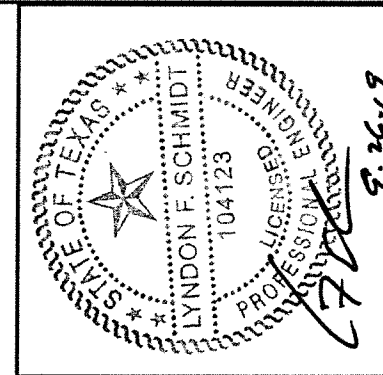
**3 VERTICAL CROSS SECTION**  
**4** Outswing configuration



**2 VERTICAL CROSS SECTION**  
**4** Shown w/ ADA threshold



**4 VERTICAL CROSS SECTION**  
**4** Inswing configuration

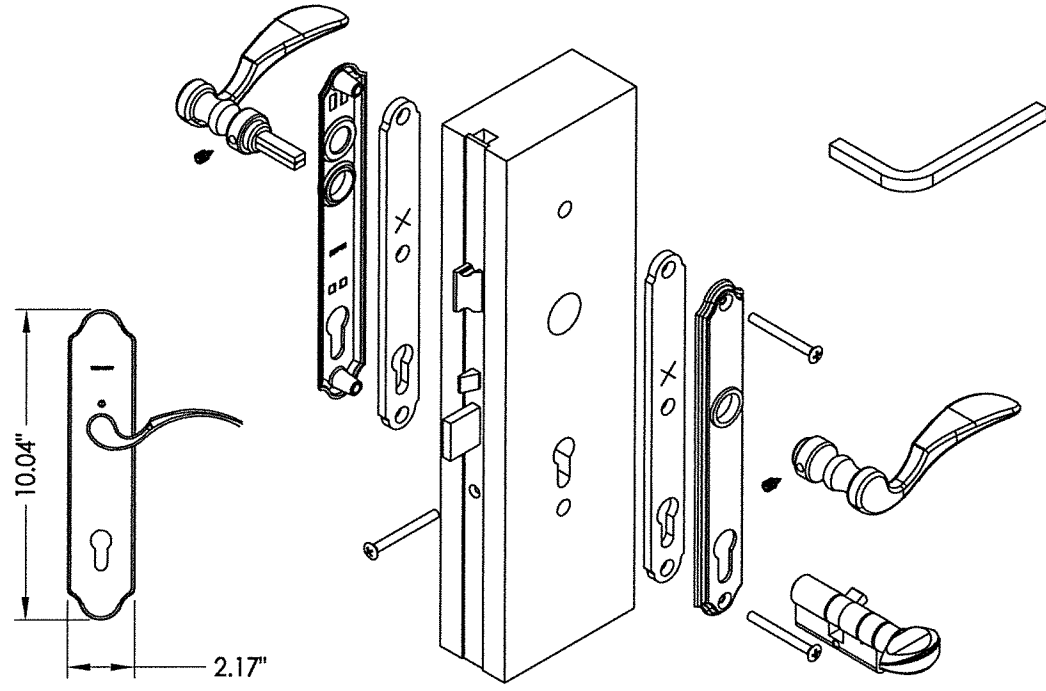
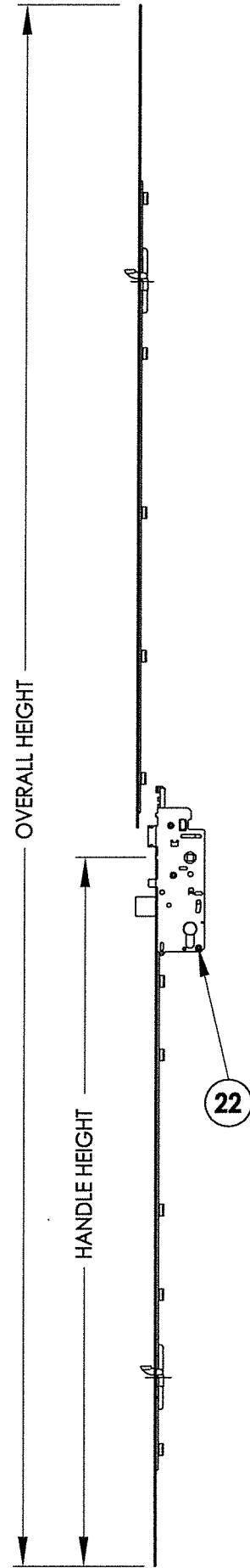


Documents Prepared By: Lyndon F. Schmidt, P.E.  
 TEXAS P.E. #104123

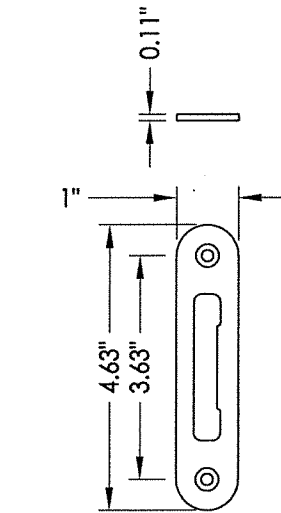
**RW** BUILDING CONSULTANTS, INC.  
 P.O. Box 230 Valrico FL 33595  
 Phone No.: 813.659.9197  
 TEXAS BOARD OF PROFESSIONAL ENGINEERS  
 CERTIFICATE OF REGISTRATION # F-11852

PRODUCT:		WINCORE FIBERGLASS DOOR	
PART OR ASSEMBLY:		VERTICAL CROSS SECTIONS	
NO.	DATE	BY	REVISIONS
1	9/18/19	LFS	ADD FLAT FRAME & UPDATE TO 2018 IBC
DATE: 05/30/12			
SCALE: N.T.S.			
DWG. BY: JK			
CHK. BY: LFS			
DRAWING NO.: TX-4163			
SHEET 4 OF 9			

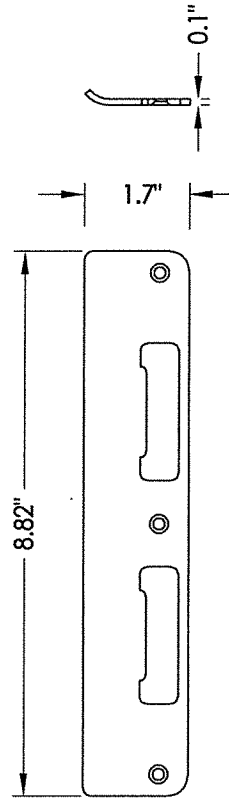
**MANUAL RAISED TONGUE GEAR SYSTEM**



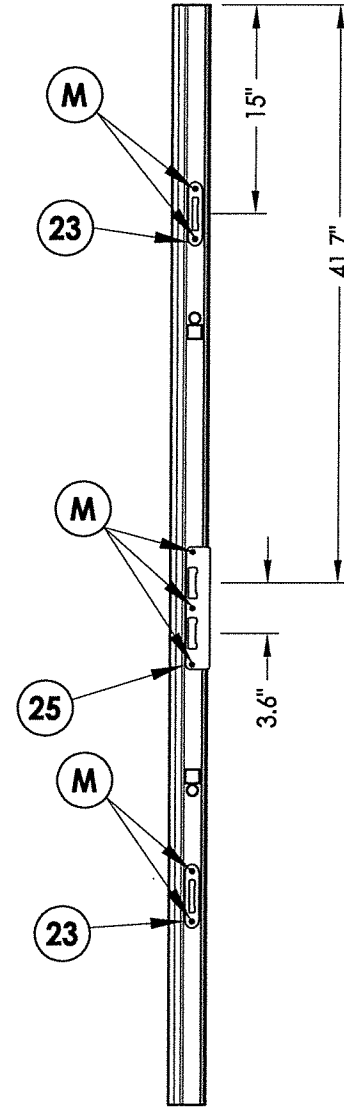
**22 HOPPE MULTI-POINT LOCKSET**  
3-Point "Tongue"



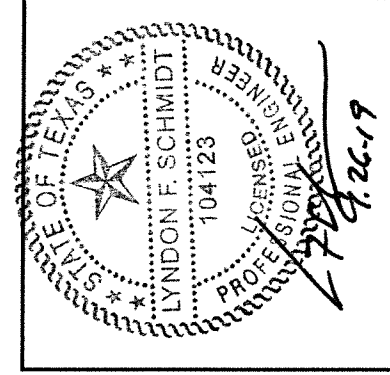
**23 MULTI-POINT STRIKE PLATE**



**25 LATCH AND DEADBOLT STRIKE PLATE**  
Tongue system



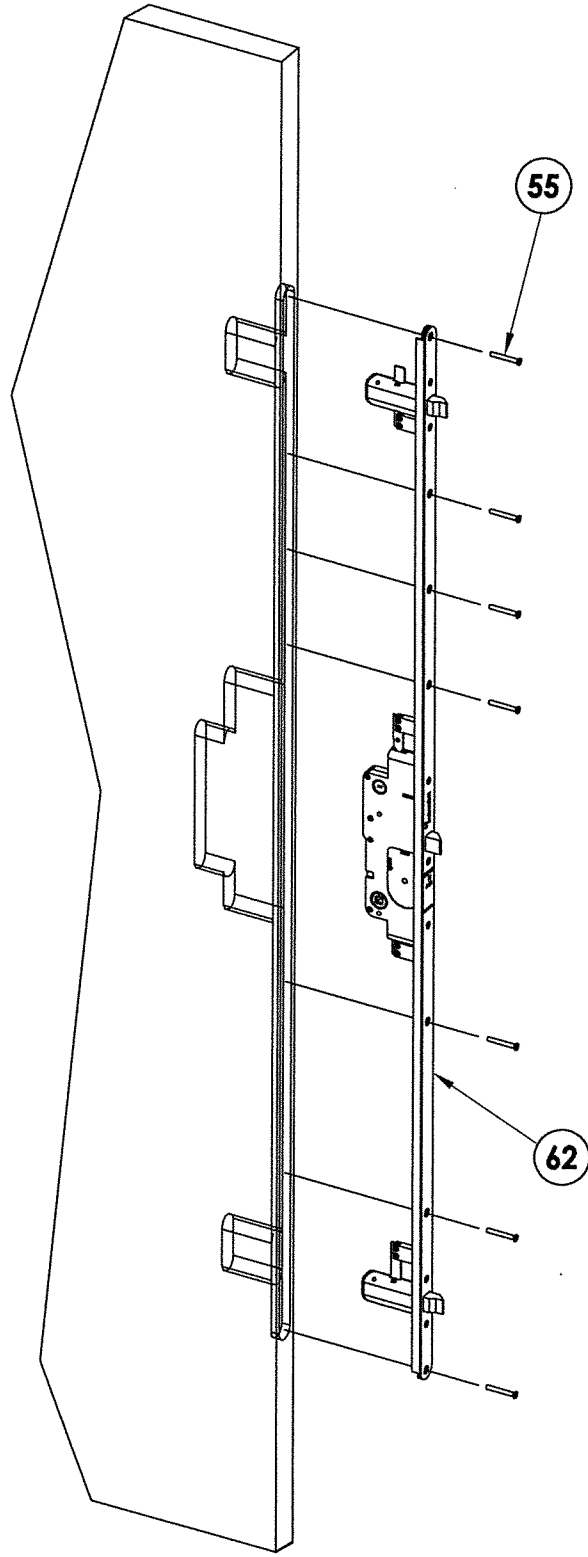
**STRIKE JAMB**



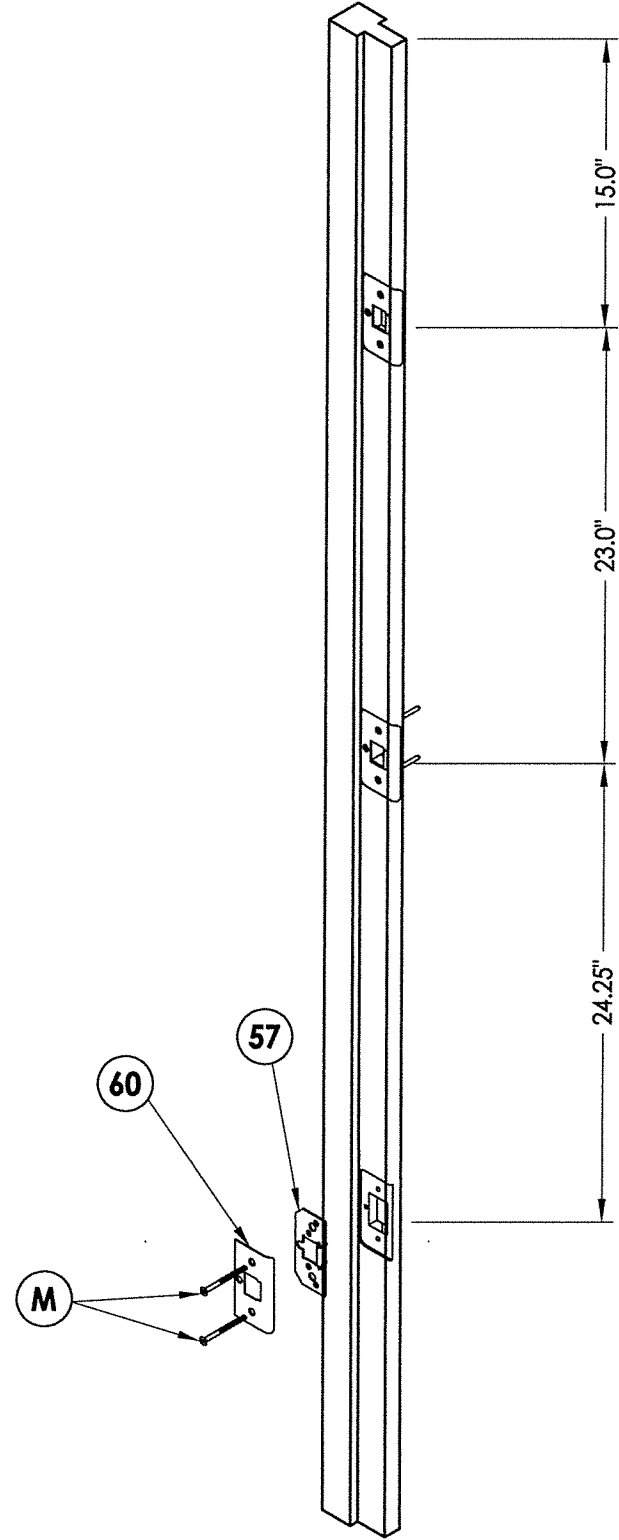
Documents Prepared By: Lyndon F. Schmidt, P.E.  
TEXAS P.E. #104123

**RW** BUILDING CONSULTANTS, INC.  
P.O. Box 230 Vairico FL 33595  
Phone No.: 813.659.9197  
TEXAS BOARD OF PROFESSIONAL ENGINEERS  
CERTIFICATE OF REGISTRATION # F-11852

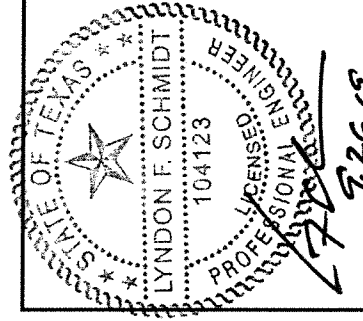
PRODUCT:		WINCORE FIBERGLASS DOOR	
NO.		PART OR ASSEMBLY:	
1	9/18/19	ADD FLAT FRAME & UPDATE TO 2018 IBC	LFS
NO.	DATE	REVISIONS	
			BY
DATE: 05/30/12			
SCALE: N.T.S.			
DWG. BY: JK			
CHK. BY: LFS			
DRAWING NO.: TX-4163			
SHEET 5 OF 9			



59 **W & F TRILENNIUM 3000 SERIES**  
3-Point Lock



ASTRAGAL STRIKE DETAIL



Documents Prepared By: Lyndon F. Schmidt, P.E.  
TEXAS P.E. #104123

**RW** BUILDING CONSULTANTS, INC.  
P.O. Box 230 Valrico FL 33595  
Phone No.: 813.659.9197

TEXAS BOARD OF PROFESSIONAL ENGINEERS  
CERTIFICATE OF REGISTRATION # F-11852

PRODUCT:		WINCORE FIBERGLASS DOOR	
PART OR ASSEMBLY:		3-POINT LOCK DETAILS	
NO.	DATE	REVISIONS	BY
1	9/18/19	ADD FLAT FRAME & UPDATE TO 2018 IBC	LFS

DATE: 05/30/12

SCALE: N.T.S.

DWG. BY: JK

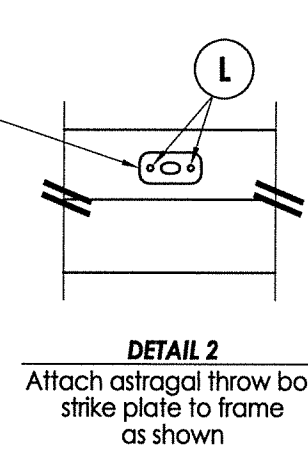
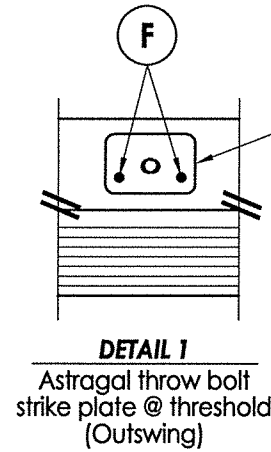
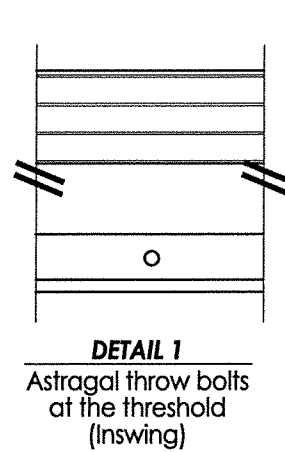
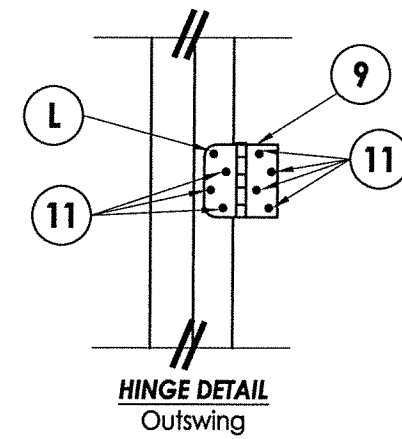
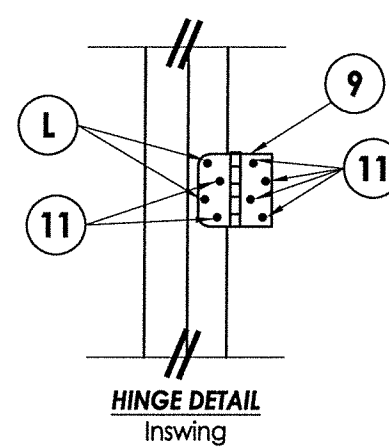
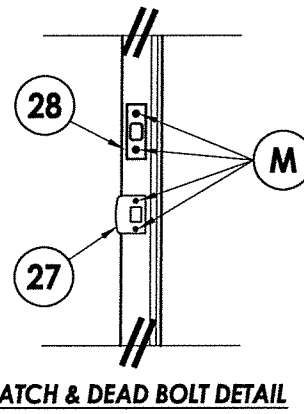
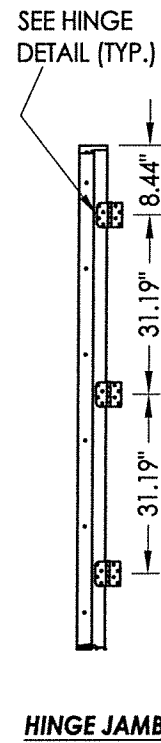
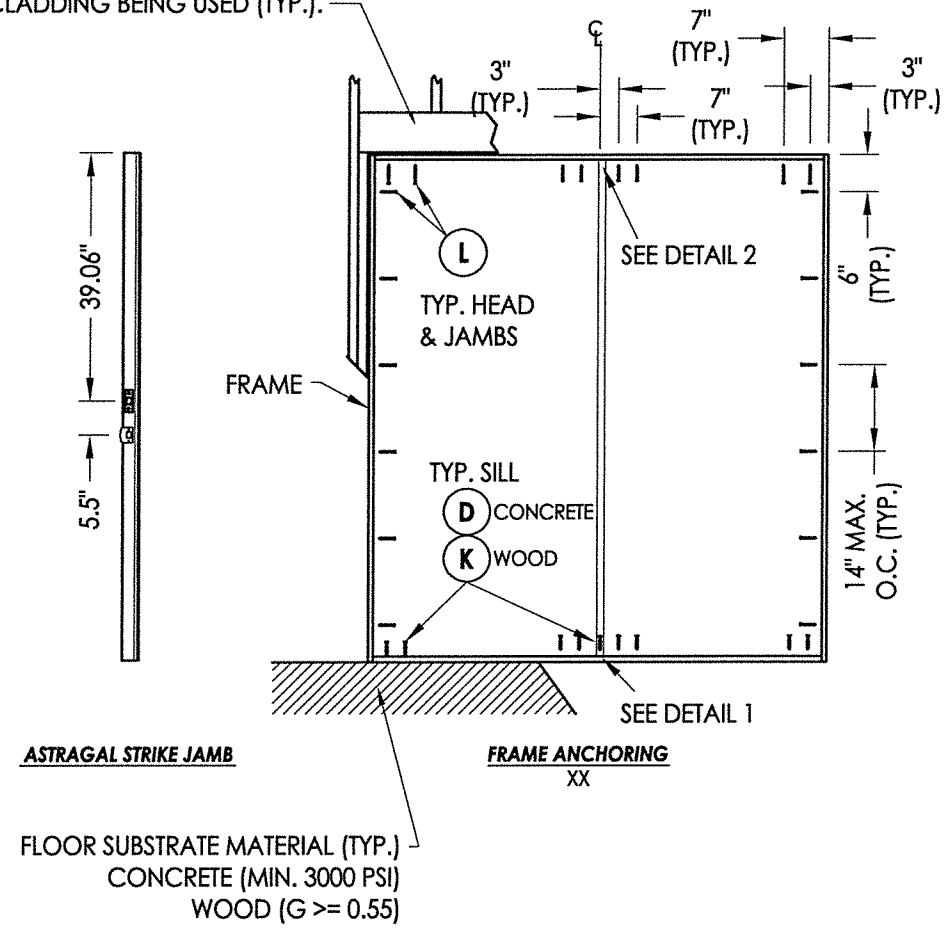
CHK. BY: LFS

DRAWING NO.:

TX-4163

SHEET 6 OF 9

2X FRAMING TO BE DESIGNED BY THE ENGINEER OR ARCHITECT OF RECORD BASED ON WIND LOADS AND THE CLADDING BEING USED (TYP.).

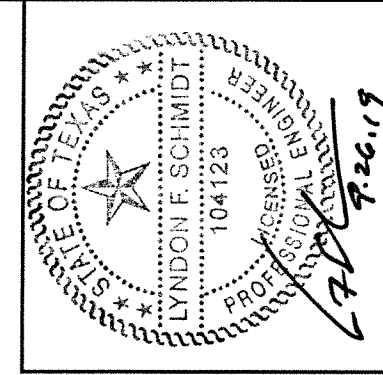


**CONCRETE ANCHOR NOTES:**

- Concrete anchor locations at the corners may be adjusted to maintain the min. edge distance to mortar joints. Concrete anchor locations noted as "MAX. ON CENTER" must be adjusted to maintain the min. edge distance to mortar joints, additional concrete anchors may be required to ensure the "MAX. ON CENTER" dimension are not exceeded.
- adjusted to maintain the min. edge distance to mortar joints, additional concrete anchors may be required to ensure the "MAX. ON CENTER" dimension are not exceeded.

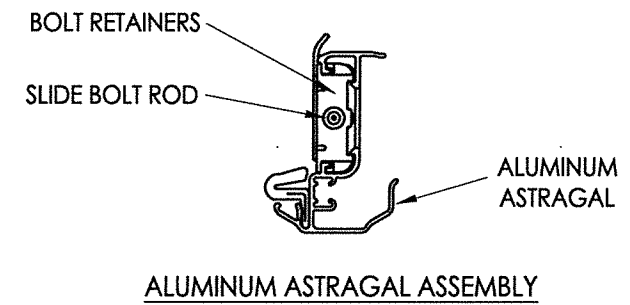
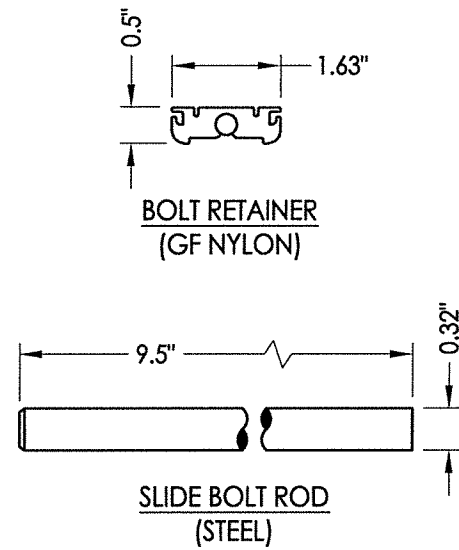
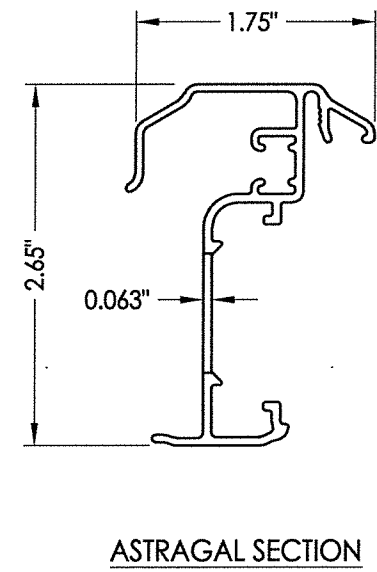
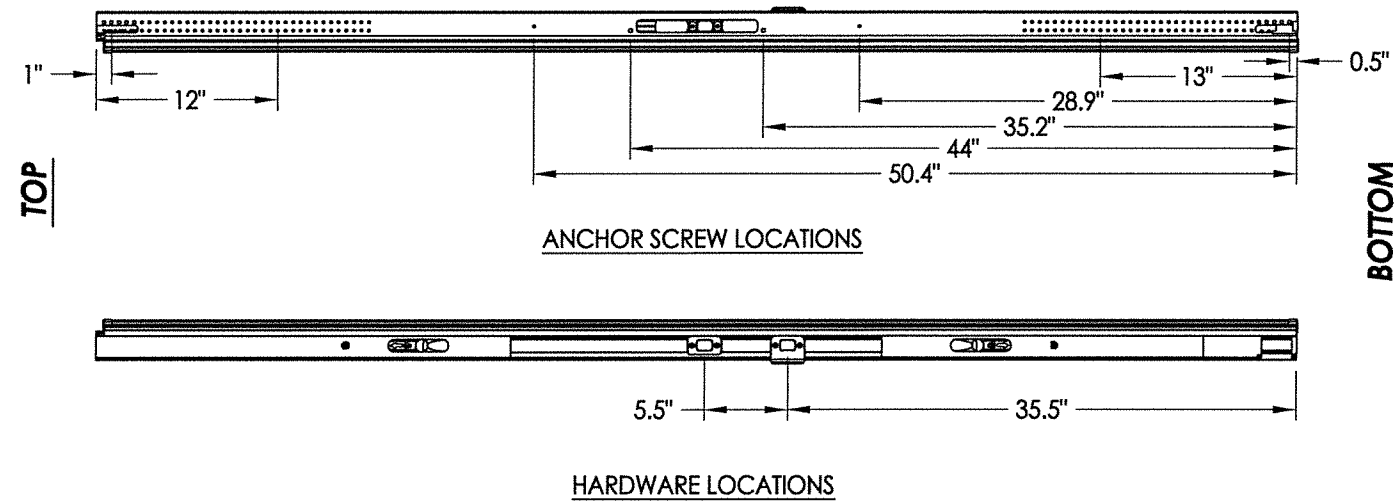
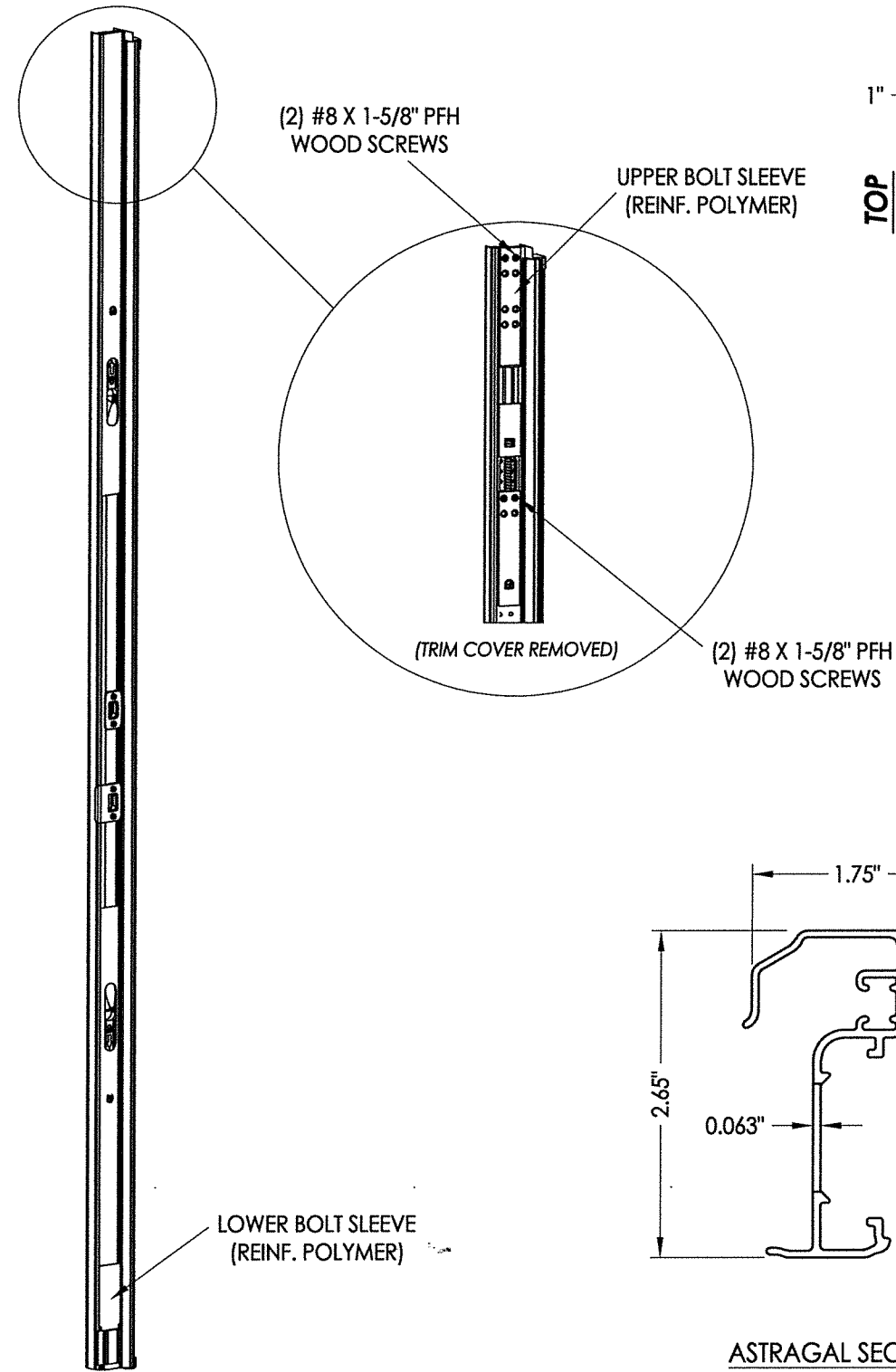
Concrete anchor table:

ANCHOR TYPE	ANCHOR SIZE	MIN. EMBEDMENT	MIN. CLEARANCE TO MASONRY EDGE	MIN. CLEARANCE TO ADJACENT ANCHOR
ITW TAPCON®	1/4"	1-1/4"	2-1/2"	3"

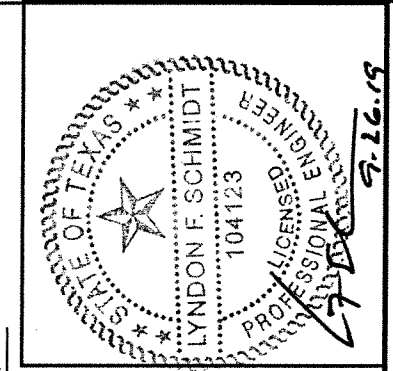


Documents Prepared By: Lyndon F. Schmidt, P.E.  
TEXAS P.E. #104123  
**RW** BUILDING CONSULTANTS, INC.  
P.O. Box 230 Valrico FL 33595  
Phone No.: 813.659.9197  
TEXAS BOARD OF PROFESSIONAL ENGINEERS  
CERTIFICATE OF REGISTRATION # F-11852

PRODUCT:	WINCORE FIBERGLASS DOOR	
PART OR ASSEMBLY:	FRAME ANCHORING	
DATE:	05/30/12	
SCALE:	N.T.S.	
DWG. BY:	JK	
CHK. BY:	LFS	
DRAWING NO.:	TX-4163	
SHEET	7 OF 9	
NO.	DATE	BY
1	9/18/19	LFS
ADD FLAT FRAME & UPDATE TO 2018 IBC		
REVISIONS		



**ULTIMATE HURRICANE ASTRAGAL**



Documents Prepared By: Lyndon F. Schmidt, P.E.  
TEXAS P.E. #104123

**RW** BUILDING CONSULTANTS, INC.  
P.O. Box 230 Vairico FL 33595  
Phone No.: 813.659.9197

TEXAS BOARD OF PROFESSIONAL ENGINEERS  
CERTIFICATE OF REGISTRATION # F-11852

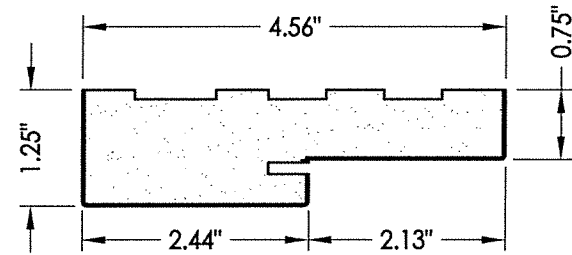
PRODUCT:	WINCORE FIBERGLASS DOOR	
PART OR ASSEMBLY:	ASTRAGAL DETAILS	
NO.	DATE	BY
1	9/18/19	LFS
ADD FLAT FRAME & UPDATE TO 2018 IBC		

DATE:	05/30/12
SCALE:	N.T.S.
DWG. BY:	JK
CHK. BY:	LFS
DRAWING NO.:	TX-4163
SHEET	8 OF 9

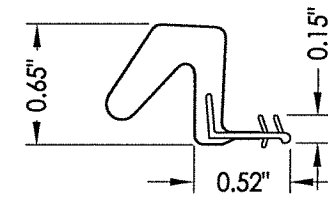


**BILL OF MATERIALS**

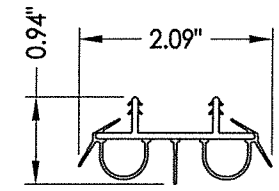
ITEM #	DESCRIPTION	MATERIAL
A	2X FRAMING (G >= 0.55)	WOOD
C	1/4" MAX. SHIM SPACE	-
D	1/4" PFH ITW CONCRETE SCREW (1-3/4" MIN. EMB.)	STEEL
F	3/16" PFH ITW CONCRETE SCREW (1-3/4" MIN. EMB.)	STEEL
J	#10 X 3" PFH WOOD SCREW	STEEL
L	#8 X 2-1/2" PFH WOOD SCREW	STEEL
M	#8 X 1-1/2" PFH WOOD SCREW	STEEL
1	POLY FIBER JAMB	COMP. / VINYL
3	EXT. "TRADITIONAL" FRAME (ODL)	ALUM.
4	INT. "TRADITIONAL" FRAME (ODL)	ALUM.
5	#7-19 X 1-3/4" PPH SELF-DRILLING SMS	STEEL
7	WEATHERSTRIP	FOAM
8	DOOR BOTTOM SWEEP	VINYL
9	4" X 4" BUTT HINGE	STEEL
11	#9 X 3/4" PFH WOOD SCREW	STEEL
12	NON-STRUCTURAL SEALANT	SILICONE
13	STRUCTURAL SILICONE (DOW 995)	SILICONE
15	EXT. "FLAT" FRAME (ODL)	ALUM
16	INT. "FLAT" FRAME (ODL)	ALUM
17	#8 X 2" PPH SMS	STEEL
22	HOPPE - 3 POINT "TONGUE" MULTI-POINT LOCKSET	STEEL
23	MULTI-POINT STRIKE PLATE (TONGUE SYSTEM)	STEEL
25	LATCH AND DEADBOLT STRIKE PLATE (TONGUE SYSTEM)	STEEL
27	LATCH STRIKE PLATE	STEEL
28	DEADBOLT STRIKE PLATE (SECURITY)	STEEL
29	ADA THRESHOLD	ALUM
30	OUTSWING THRESHOLD	ALUM/WOOD
32	OUTSWING THRESHOLD	ALUM/WOOD
33	OUTSWING THRESHOLD	ALUM/COMP
36	INSWING THRESHOLD	ALUM/COMP
40	DOOR PANEL - SEE DOOR PANEL DETAIL SHEET FOR CONSTRUCTION DETAILS	-
42	ASTRAGAL THROW BOLT STRIKE PLATE	STEEL
50	SIDELITE PANEL - SEE SIDELITE PANEL DETAIL SHEET FOR CONSTRUCTION DETAILS	-
55	#10 X 1-1/2" PFH SCREW	STEEL
57	BACKING PLATE	STEEL
58	#8 X 2" PFH WS	STEEL
59	W & F TRILENNIUM SERIES 3000 - 3 POINT LOCK	-
60	MULTI-POINT STRIKE PLATE	STEEL
62	LOCK ASSEMBLY	STEEL
70	ASTRAGAL BY ENDURA	ALUM
71	BOLT RETAINER (9-3/4")	ALUM
73	SLIDE BOLT ROD	STEEL
88	2X REINFORCEMENT SG >= 0.55	WOOD



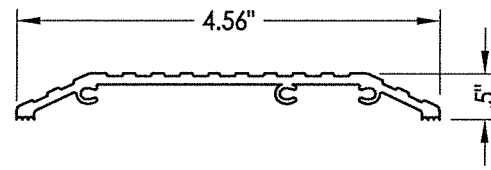
**1 POLY FIBER JAMB**  
Plastpro



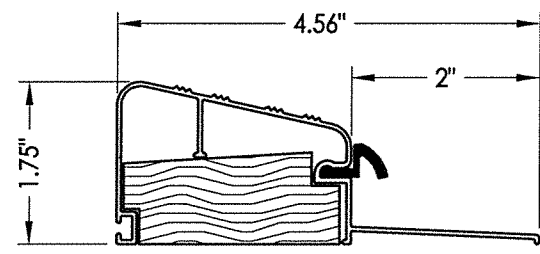
**7 WEATHERSTRIP**  
Endura Force 5



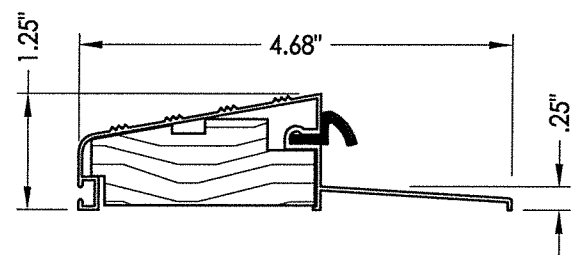
**8 DOOR BOTTOM SWEEP**



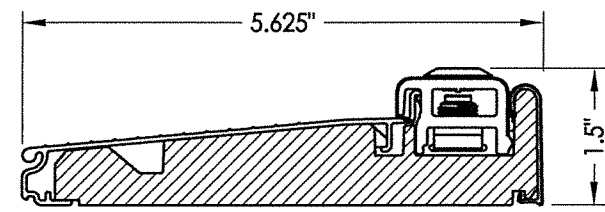
**29 ADA THRESHOLD**  
DLP



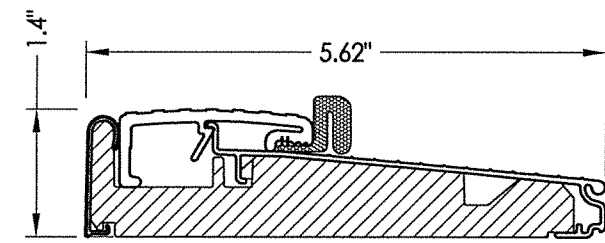
**30 OUTSWING THRESHOLD**  
DLP (QOSR)



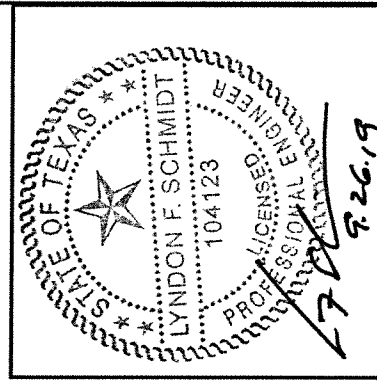
**32 OUTSWING THRESHOLD**  
DLP (QOSH)



**36 INSWING THRESHOLD**  
Endura (Z-Series)



**33 OUTSWING THRESHOLD**  
Endura (Z-Series)



Documents Prepared By: Lyndon F. Schmidt, P.E.  
TEXAS P.E. #104123

**RW** BUILDING CONSULTANTS, INC.  
P.O. Box 230 Valrico FL 33595  
Phone No.: 813.659.9197  
TEXAS BOARD OF PROFESSIONAL ENGINEERS  
CERTIFICATE OF REGISTRATION # F-11852

PRODUCT: WINCORE FIBERGLASS DOOR  
PART OR ASSEMBLY: BILL OF MATERIALS

NO.	DATE	REVISIONS
1	9/18/19	ADD FLAT FRAME & UPDATE TO 2018 IBC

DATE: 05/30/12  
SCALE: N.T.S.  
DWG. BY: JK  
CHK. BY: LFS  
DRAWING NO.: TX-4163  
SHEET 9 OF 9