

plastpro

5200 W. CENTURY BLVD.
LOS ANGELES, CA 90045

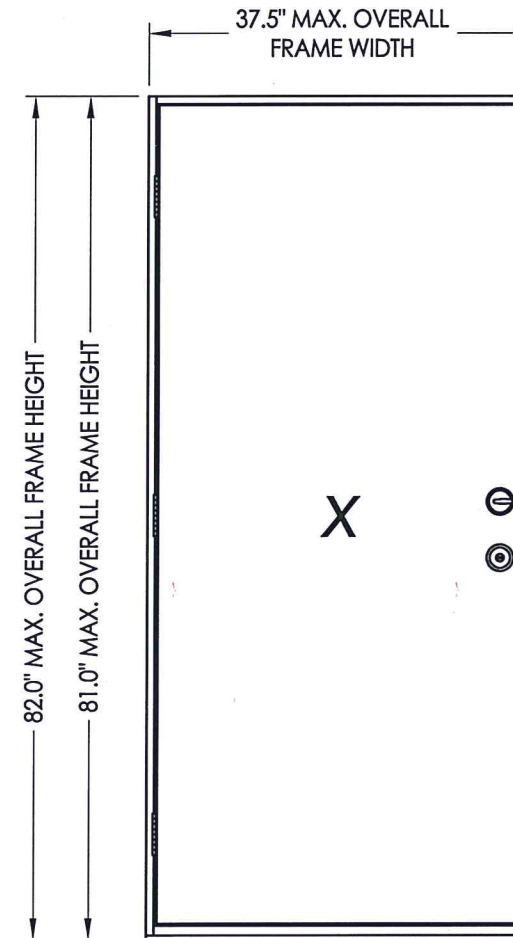


Documents Prepared By: Lyndon F. Schmidt, P.E.
TEXAS P.E. #104123

RW BUILDING CONSULTANTS, INC.
P.O. Box 230 Vairico FL. 33595
Phone No.: 813.659.9197

TEXAS BOARD OF PROFESSIONAL ENGINEERS
CERTIFICATE OF REGISTRATION # F-11852

OPAQUE FIBERGLASS SINGLE DOOR FIRE RATED INSWING / OUTSWING "IMPACT"



EVALUATED FOR USE IN THE STATE OF TEXAS

The Fiberglass Door system described herein complies with the 2018 International Residential Code (IRC), Sections R301 & R609 and the 2018 International Building Code (IBC), Sections 1404.13, 1609, 1709.5, 2403 and 2404 subject to the following conditions:

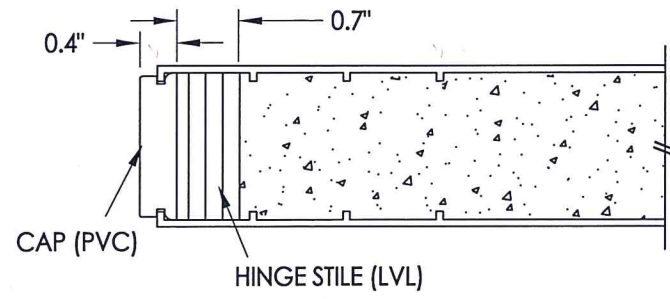
1. Anchors shall be as listed and spaced as shown in the details. Anchor embedment to base material shall be beyond wall dressing or stucco.
2. This system has been tested and evaluated as a large missile impact protective system for installation in areas that require wind borne debris protection. This product meets missile level "D" as defined in ASTM E 1996.
3. Allowable design pressure requirements must be equal to or less than the design pressure rating shown in the design pressure chart, sheet 1 of this drawing.
4. Note: Fire rating is not part of this approval and it is the responsibility of the Design Professional to verify adequacy of this product to meet IBC/IRC requirements for fire ratings.
5. Conditions not covered by this drawing are subject to further engineering analysis.

TABLE OF CONTENTS

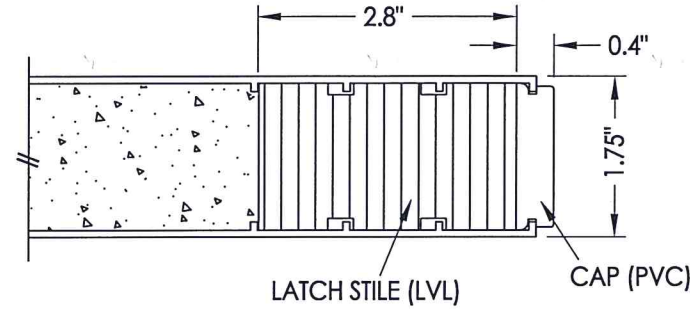
SHEET#	DESCRIPTION
1	Typical elevations, design pressures & general notes
2	Door panel details
3	Vertical cross sections
4	Horizontal cross section
5	Frame anchoring
6	Bill of materials and components

CONFIGURATION	MAX. FRAME DIMENSION	DESIGN PRESSURE (PSF) INSWING		DESIGN PRESSURE (PSF) OUTSWING	
		POSITIVE	NEGATIVE	POSITIVE	NEGATIVE
X	37.5" x 82.0"	+75.0	-75.0	+75.0	-75.0

PRODUCT:	PLASTPRO FIBERGLASS DOOR
PART OR ASSEMBLY:	TYPICAL ELEVATIONS, DESIGN PRESSURES & GENERAL NOTES
NO.	1
DATE	5/04/20
UPDATE TO	2018 IBC/IRC CODE
LFS	BY
REVISIONS	
DATE:	11/11/14
SCALE:	N.T.S.
DWG. BY:	JK
CHK. BY:	LFS
DRAWING NO.:	TX-4476
SHEET	1 OF 6

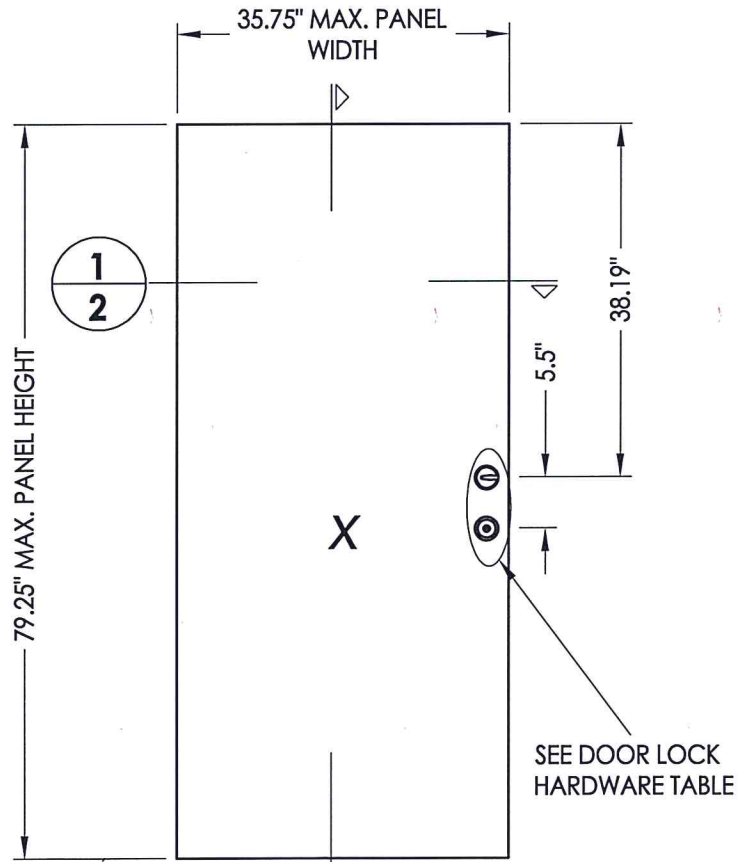


EXTERIOR



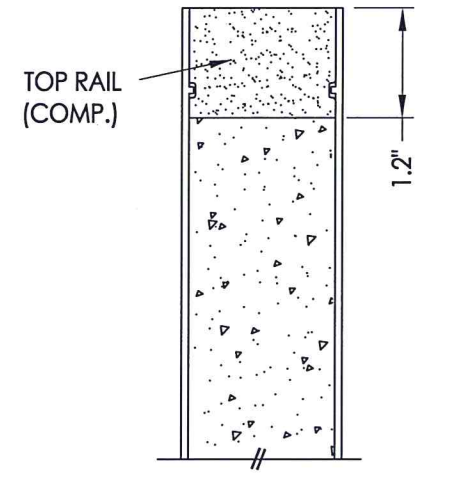
INTERIOR

1
2 **HORIZONTAL CROSS SECTION**



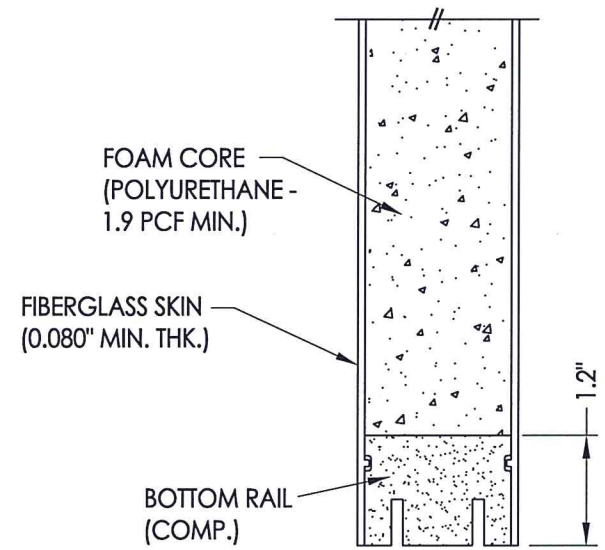
40 **PLASTPRO DOOR PANEL**

DOOR LOCK HARDWARE TABLE	
MANUFACTURER	MODEL
KWIKSET	Knob: KWIKSET SERIES (400)
	DEADBOLT: KWIKSET SERIES (660)
SCHLAGE	HANDLE SET: "F" SERIES (F10)
	DEADBOLT: "B" SERIES (B60N)



EXTERIOR

INTERIOR



2
2 **VERTICAL CROSS SECTION**



Documents Prepared By: Lyndon F. Schmidt, P.E.
TEXAS P.E. #104123

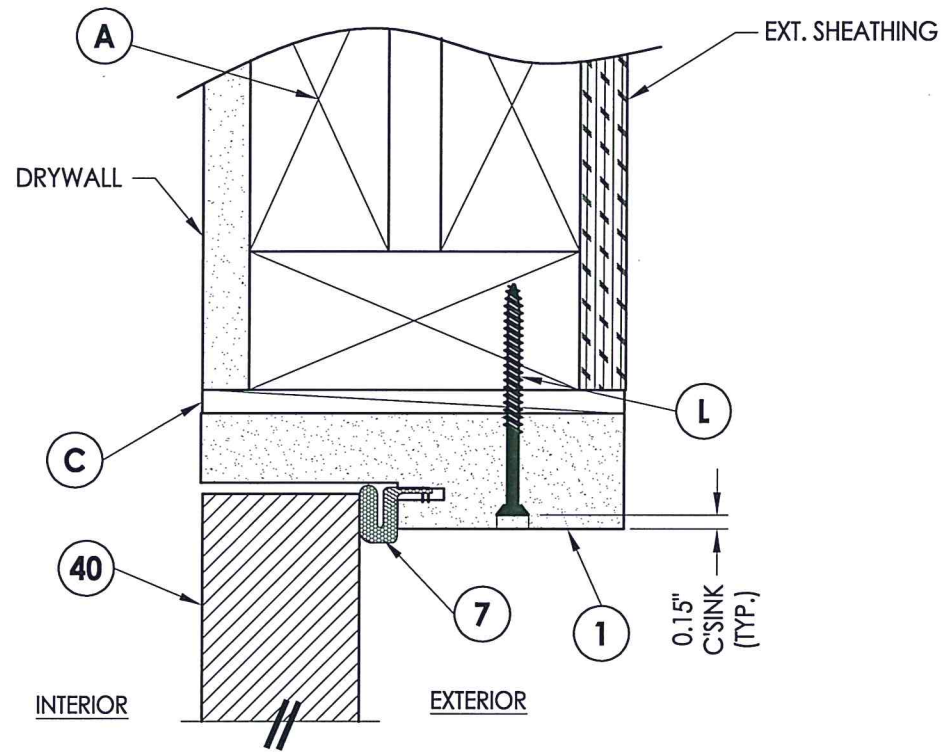
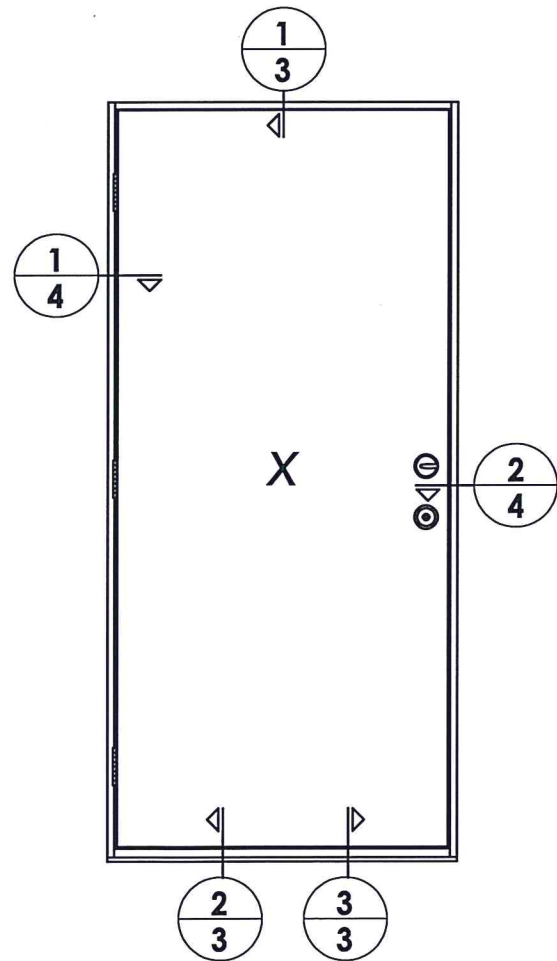
RW BUILDING CONSULTANTS, INC.
P.O. Box 230 Valrico FL 33595
Phone No.: 813.659.9197

TEXAS BOARD OF PROFESSIONAL ENGINEERS
CERTIFICATE OF REGISTRATION # F-11852

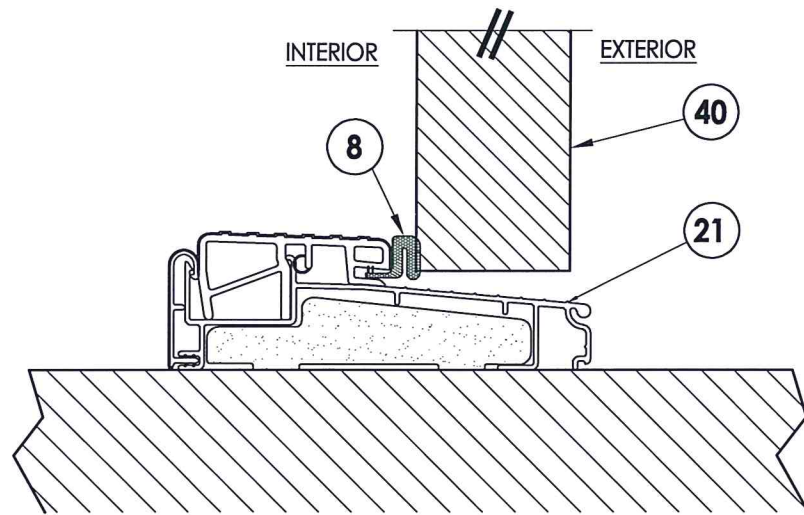
PRODUCT: PLASTPRO INC. FIBERGLASS DOOR
PART OR ASSEMBLY: DOOR PANEL DETAILS

REVISIONS	
NO.	DATE
1	5/04/20
	UPDATE TO 2018 IBC/IRC CODE
	LFS
	BY

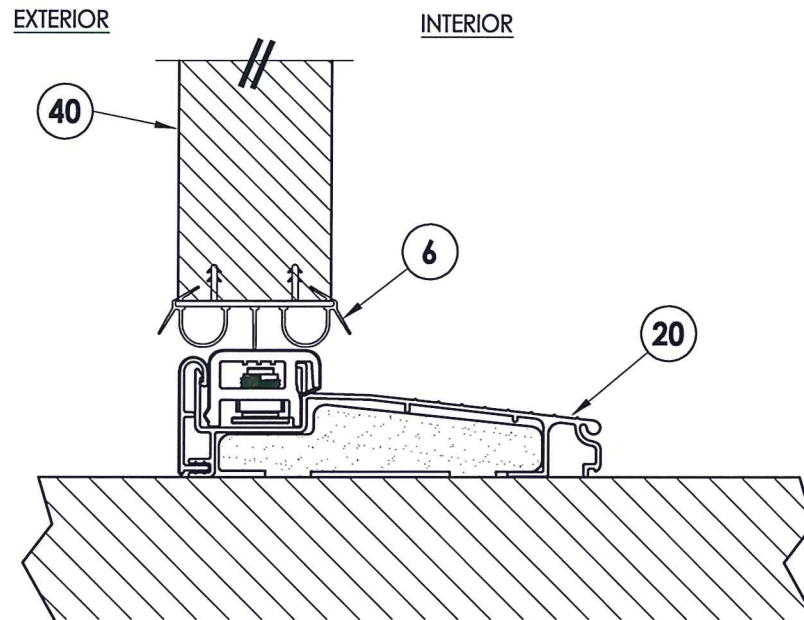
DATE: 11/11/14
SCALE: N.T.S.
DWG. BY: JK
CHK. BY: LFS
DRAWING NO.: TX-4476
SHEET 2 OF 6



1 VERTICAL CROSS SECTION
3 Inswing shown (Outswing similar)



2 VERTICAL CROSS SECTION
3 Outswing configuration



3 VERTICAL CROSS SECTION
3 Inswing configuration



Documents Prepared By: Lyndon F. Schmidt, P.E.
 TEXAS P.E. #104123

RW BUILDING CONSULTANTS, INC.
 P.O. Box 230 Valrico FL 33595
 Phone No.: 813.659.9197

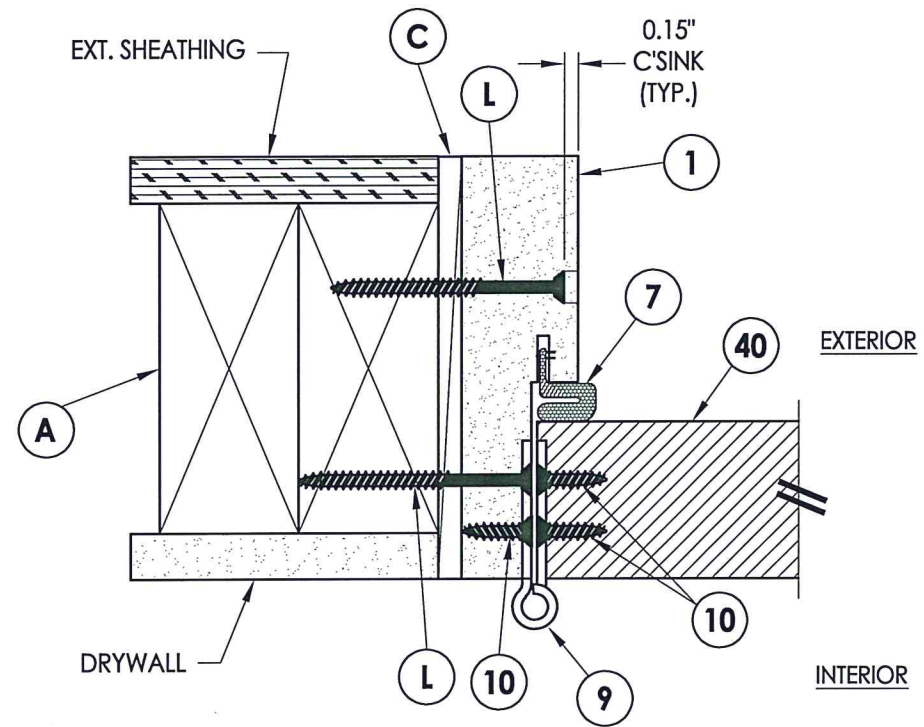
TEXAS BOARD OF PROFESSIONAL ENGINEERS
 CERTIFICATE OF REGISTRATION # F-11852

PRODUCT: PLASTPRO FIBERGLASS DOOR
 PART OR ASSEMBLY: VERTICAL CROSS SECTIONS

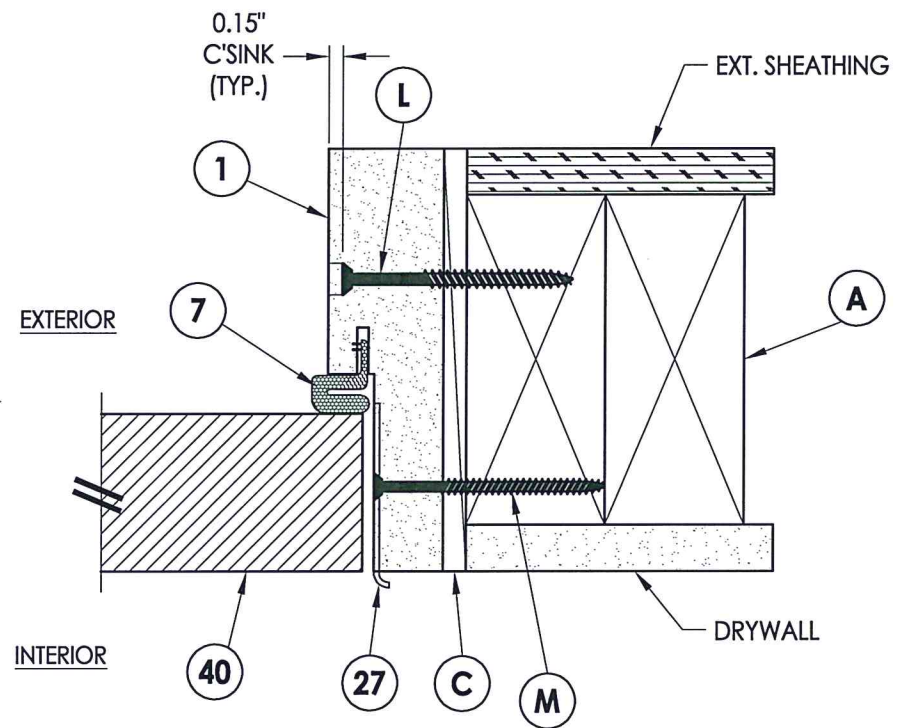
NO.	DATE	DESCRIPTION	BY
1	5/04/20	UPDATE TO 2018 IBC/IRC CODE	LFS

DATE: 11/11/14
 SCALE: N.T.S.
 DWG. BY: JK
 CHK. BY: LFS
 DRAWING NO.: TX-4476
 SHEET 3 OF 6

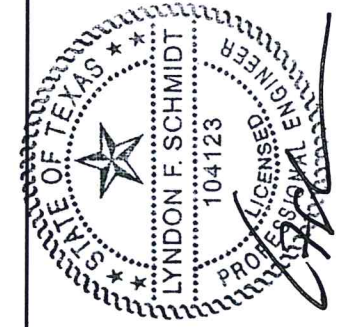
R:\Clients\Plastpro, Inc PERMANENT\B - TDI\TDI - DR 463 X Sgl Opaque Fire Door\Drawings\Current\TX-4476.dwg, 1-4



1 HORIZONTAL CROSS SECTION
4 Inswing shown (Outswing similar)



2 HORIZONTAL CROSS SECTION
4 Inswing shown (Outswing similar)

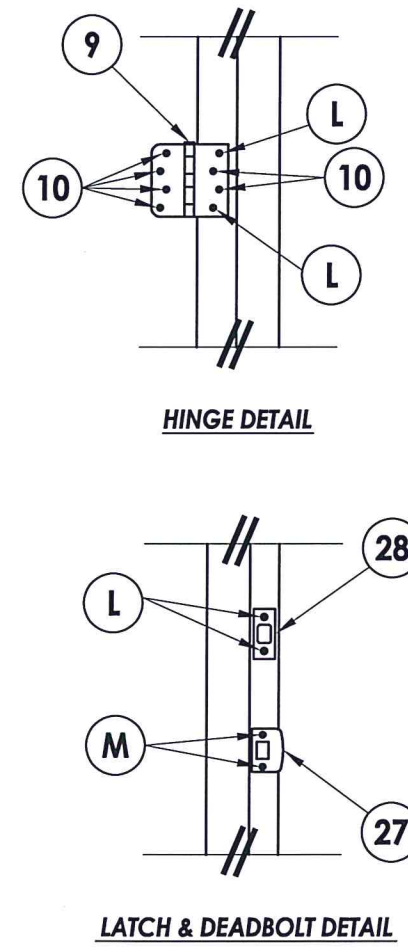
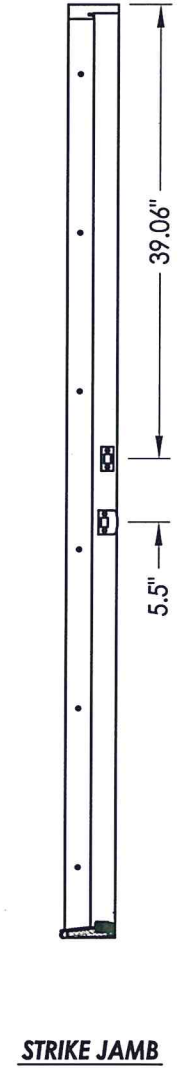
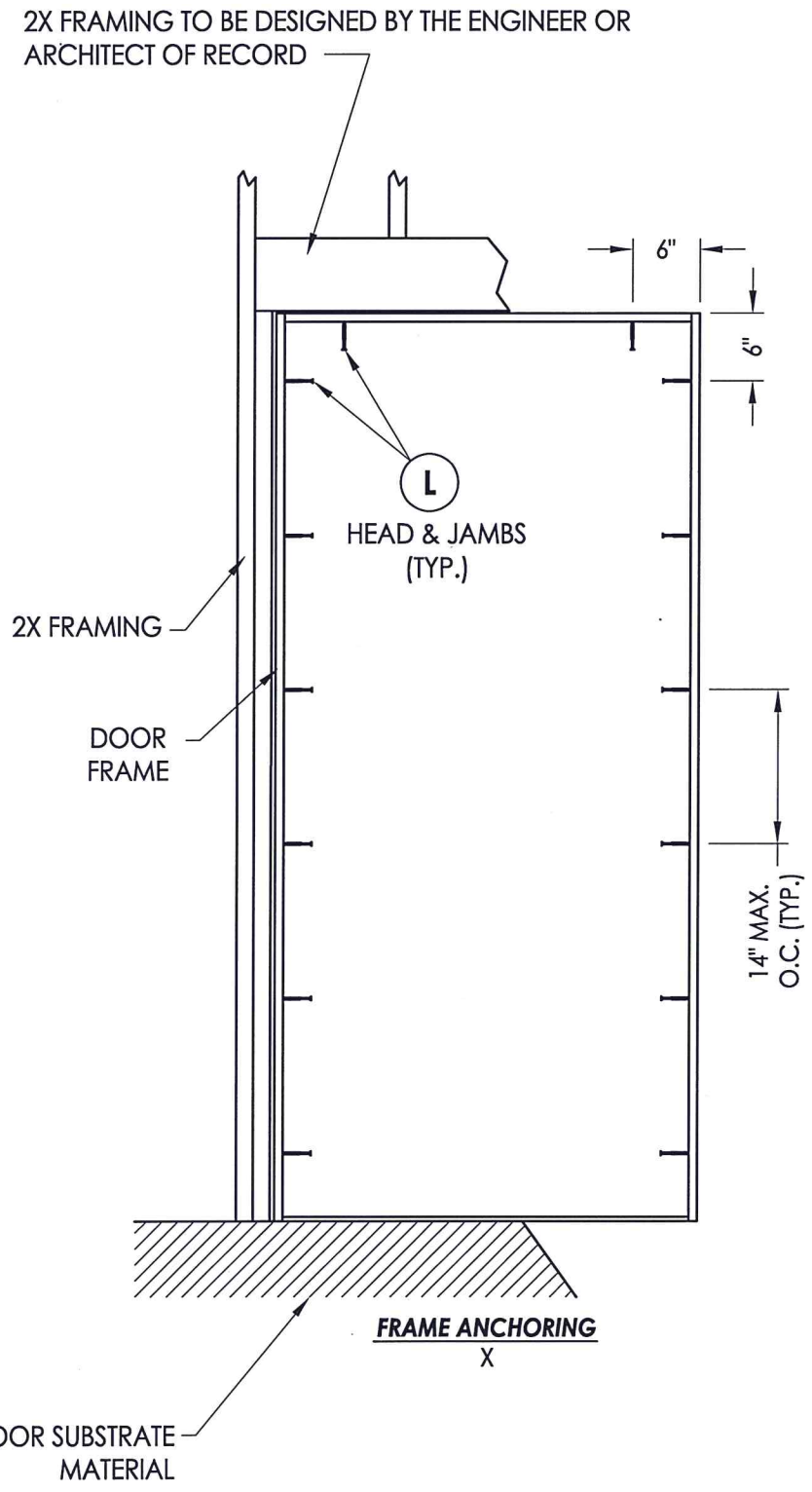
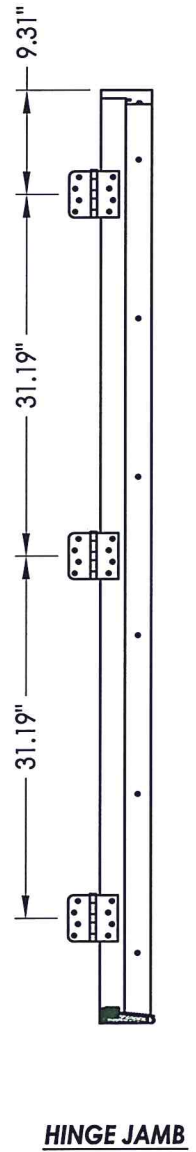


Documents Prepared By: Lyndon F. Schmidt, P.E.
 TEXAS P.E. #104123

RW BUILDING CONSULTANTS, INC.
 P.O. Box 230 Vairico FL. 33595
 Phone No.: 813.659.9197
 TEXAS BOARD OF PROFESSIONAL ENGINEERS
 CERTIFICATE OF REGISTRATION # F-11852

PRODUCT:		PLASTPRO FIBERGLASS DOOR	
PART OR ASSEMBLY:		HORIZONTAL CROSS SECTIONS	
NO.	DATE	DESCRIPTION	BY
1	5/04/20	UPDATE TO 2018 IBC/IRC CODE	LFS
			REVISIONS
DATE: 11/11/14			
SCALE: N.T.S.			
DWG. BY: JK			
CHK. BY: LFS			
DRAWING NO.: TX-4476			
SHEET 4 OF 6			

R:\Clients\Plastpro, Inc PERMANENT\B - TDI\TDI - DR 463 X Sgl Opaque Fire Door\Drawings\Current\TX-4476.dwg, 1-5



Documents Prepared By: Lyndon F. Schmidt, P.E.
TEXAS P.E. #104123

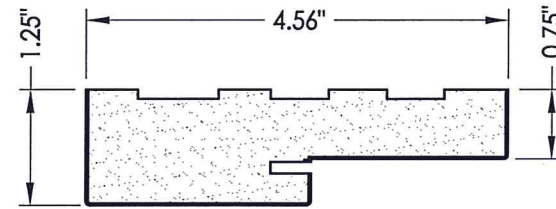
RW BUILDING CONSULTANTS, INC.
P.O. Box 230 Valrico FL 33595
Phone No.: 813.659.9197

TEXAS BOARD OF PROFESSIONAL ENGINEERS
CERTIFICATE OF REGISTRATION # F-11852

PRODUCT:		PLASTPRO FIBERGLASS DOOR	
PART OR ASSEMBLY:		FRAME ANCHORING	
NO.	DATE	DESCRIPTION	BY
1	5/04/20	UPDATE TO 2018 IBC/IRC CODE	LFS
			BY
REVISIONS			
DATE: 11/11/14			
SCALE: N.T.S.			
DWG. BY: JK			
CHK. BY: LFS			
DRAWING NO.: TX-4476			
SHEET 5 OF 6			

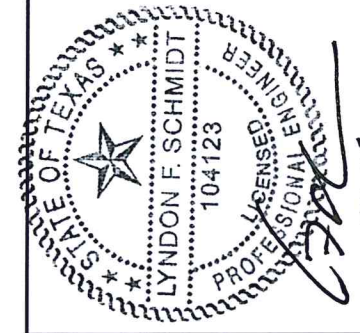
R:\Clients\Plastpro, Inc PERMANENT\B - TDI\TDI - DR 463 X Sgl Opaque Fire Door\Drawings\Current\TX-4476.dwg, 1-6

BILL OF MATERIALS		
ITEM #	DESCRIPTION	MATERIAL
A	2X FRAMING (SG >= 0.42)	WOOD
C	1/4" MAX. SHIM SPACE	-
L	#10 X 2-1/2" PFH WOOD SCREW (1.15" MIN. EMB.)	STEEL
M	#8 X 2-1/2" PFH WOOD SCREW	STEEL
1	POLY FIBER JAMB	COMP.
6	DOOR SWEEP	PVC
7	WEATHERSTRIP (Q-LON)	FOAM
8	WEATHERSTRIP (ENDURA FORCE 5)	FOAM
10	#10 x 1" PFH WOOD SCREW	STEEL
11	4" X 4" HINGE	STEEL
20	INSWING THRESHOLD	ALUM/COMP
21	OUTSWING THRESHOLD	ALUM/COMP
27	LATCH STRIKE PLATE	STEEL
28	DEADBOLT STRIKE PLATE	STEEL
40	DOOR PANEL	-



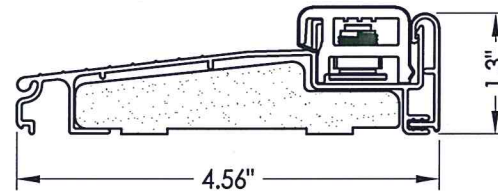
1 HEAD & SIDE JAMBS
Poly Fiber

NOTE:
1. 6-9/16" jamb (PF) may be substituted for a 4-9/16" jamb as needed.

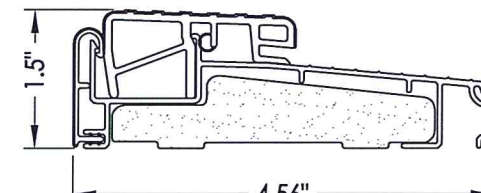


Documents Prepared By: Lyndon F. Schmidt, P.E.
TEXAS P.E. #104123

RW BUILDING CONSULTANTS, INC.
P.O. Box 230 Vairico FL. 33595
Phone No.: 813.659.9197
TEXAS BOARD OF PROFESSIONAL ENGINEERS
CERTIFICATE OF REGISTRATION # F-11852



20 INSWING THRESHOLD
Endura (Z-Series)



21 OUTSWING THRESHOLD
Endura (Z-Series)

PRODUCT: PLASTPRO FIBERGLASS DOOR
PART OR ASSEMBLY: COMPONENTS, MULTI-POINT LOCK DETAILS & B.O.M.

NO.	DATE	UPDATE TO 2018 IBC/IRC CODE	LFS	BY
1	5/04/20			

DATE: 11/11/14
SCALE: N.T.S.
DWG. BY: JK
CHK. BY: LFS
DRAWING NO.: TX-4476
SHEET 6 OF 6