

# plastpro

5200 W. CENTURY BLVD.  
LOS ANGELES, CA 90045

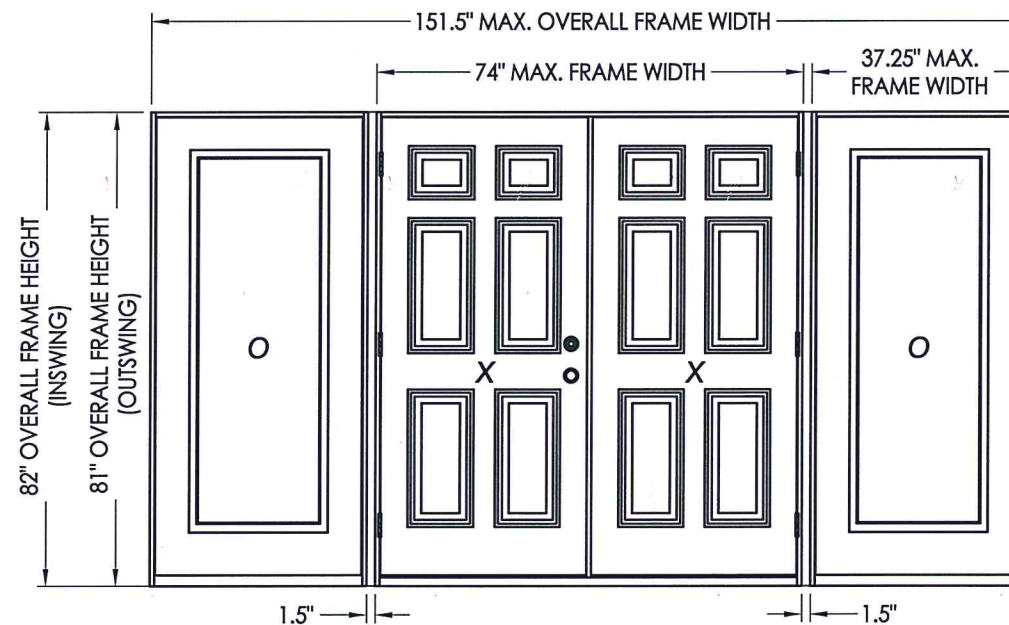
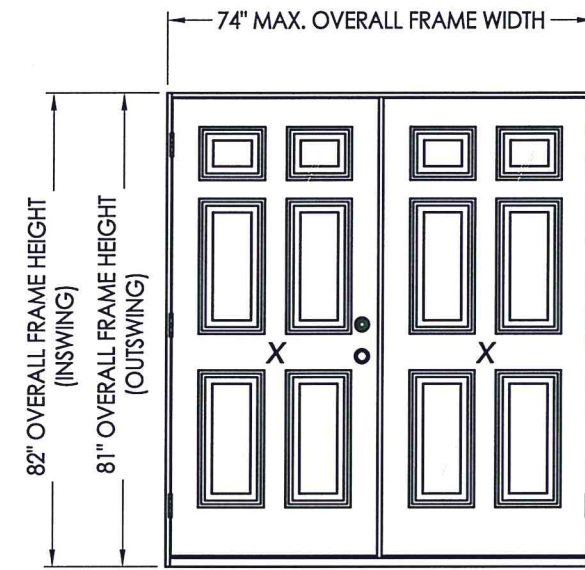
## OPAQUE FIBERGLASS DOORS DOUBLES w/ or w/out SIDELITES IN SWING / OUT SWING "IMPACT"

EVALUATED FOR USE IN THE STATE OF TEXAS

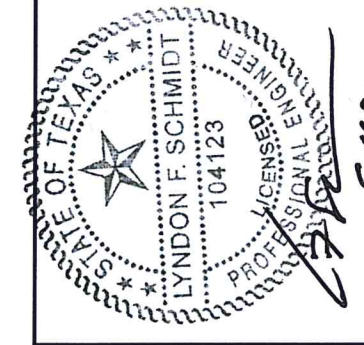
The Fiberglass Door system described herein complies with the 2018 International Residential Code (IRC), Sections R301 & R609 and the 2018 International Building Code (IBC), Sections 1404.13, 1609, 1709.5, 2403 and 2404 subject to the following conditions:

1. Anchors shall be as listed and spaced as shown in the details. Anchor embedment to base material shall be beyond wall dressing or stucco.
2. This system has been tested and evaluated as a large missile impact protective system for installation in areas that require wind borne debris protection. This product meets missile level "D" as defined in ASTM E 1996.
3. Allowable design pressure requirements must be equal to or less than the design pressure rating shown in the design pressure chart, sheet 1 of this drawing.
4. Conditions not covered by this drawing are subject to further engineering analysis.

| TABLE OF CONTENTS |  |
|-------------------|--|
| SHEET#            | DESCRIPTION  |
| 1                 | Typical elevations, design pressures & general notes |
| 2                 | Door panel details                                   |
| 3                 | Sidelite panel details                               |
| 4                 | Elevations   |
| 5                 | Vertical cross sections                              |
| 6                 | Horizontal cross sections                            |
| 7                 | Hardware details                                     |
| 8                 | Frame anchoring                                      |
| 9                 | Lite frame & glazing details                         |
| 10                | Bill of materials and components                     |



| CONFIG. | MAX. FRAME DIMENSION | DESIGN PRESSURE (PSF) INSWING |       | DESIGN PRESSURE (PSF) OUTSWING |       |
|---------|----------------------|-------------------------------|-------|--------------------------------|-------|
|         |                      | POS.                          | NEG.  | POS.                           | NEG.  |
| XX      | 74.0" x 82.0"        | +50.0                         | -50.0 | +50.0                          | -50.0 |
| OXXO    | 151.5" x 82.0"       |                               |       |                                |       |



Documents Prepared By: Lyndon F. Schmidt, P.E.  
TEXAS P.E. #104123

RW BUILDING CONSULTANTS, INC.  
P.O. Box 230 Valrico FL 33595  
Phone No.: 813.659.9197

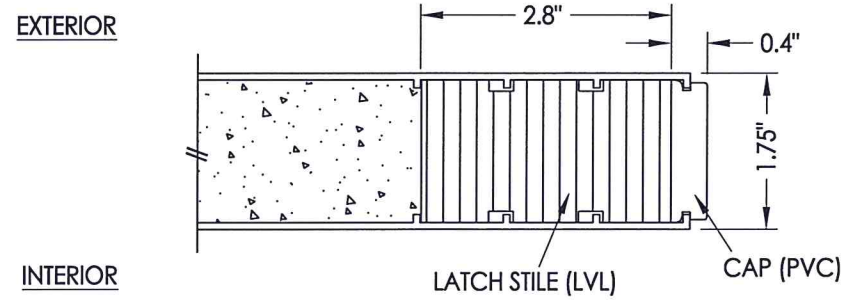
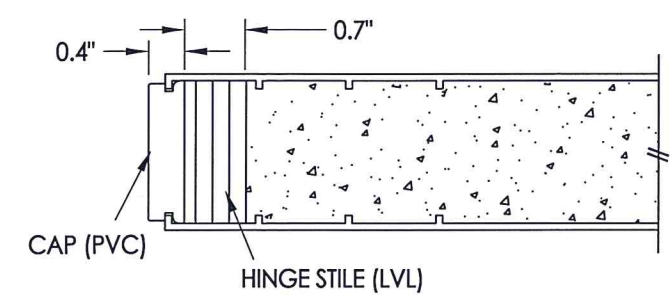
TEXAS BOARD OF PROFESSIONAL ENGINEERS  
CERTIFICATE OF REGISTRATION # F-11852

PRODUCT: PLASTPRO FIBERGLASS DOOR  
PART OR ASSEMBLY: TYPICAL ELEVATION, DESIGN PRESSURES & GENERAL NOTES

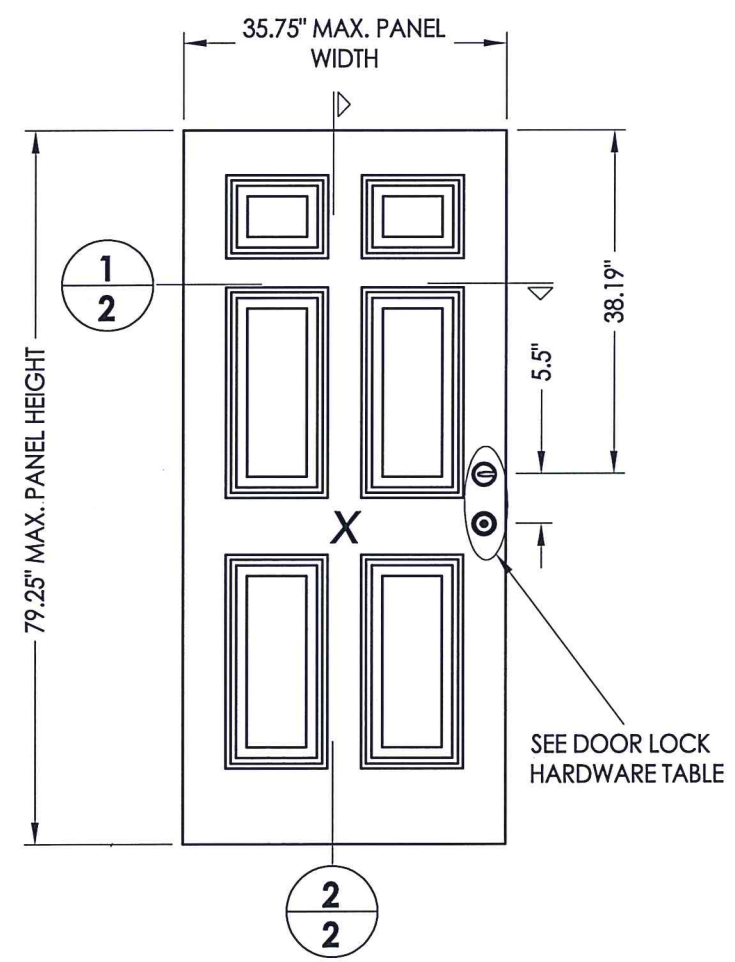
| NO. | DATE    | REVISIONS  |
|-----|---------|--|
| 2   | 5/07/20 | UPDATE TO 2018 IRC/IBC CODE AND REVISE IMPACT LITE FRAME |
| 1   | 7/11/18 | CORRECTED TITLE TO "IMPACT"                              |

DATE: 11/11/14  
SCALE: N.T.S.  
DWG. BY: JK  
CHK. BY: LFS  
DRAWING NO.: TX-4480  
SHEET 1 OF 10



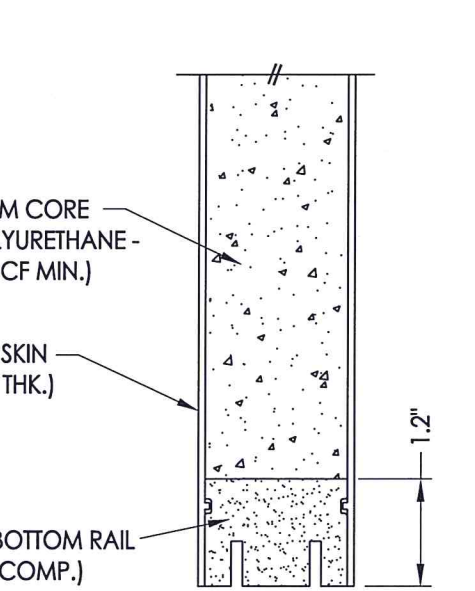
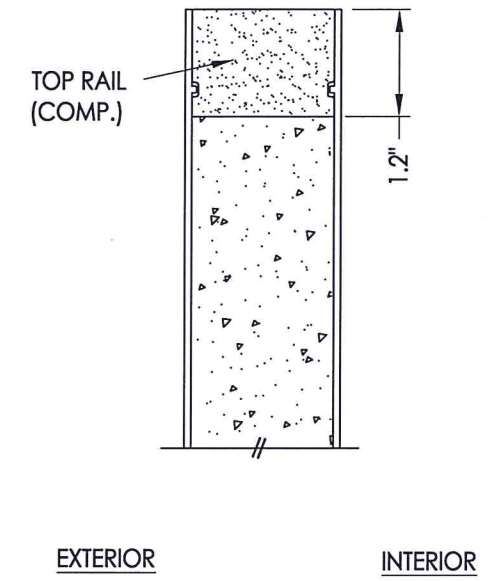


**1**  
**2** HORIZONTAL CROSS SECTION



**40** PLASTPRO DOOR PANEL

| DOOR LOCK HARDWARE TABLE |                                |
|--------------------------|--------------------------------|
| MANUFACTURER             | MODEL                          |
| KWIKSET                  | Knob: KWIKSET SERIES (400)     |
|                          | DEADBOLT: KWIKSET SERIES (660) |
| SCHLAGE                  | HANDLE SET: "F" SERIES (F10)   |
|                          | DEADBOLT: "B" SERIES (B60/62)  |



**2**  
**2** VERTICAL CROSS SECTION



Documents Prepared By: Lyndon F. Schmidt, P.E.  
TEXAS P.E. #104123

**RW** BUILDING CONSULTANTS, INC.  
P.O. Box 230 Valrico FL 33595  
Phone No.: 813.659.9197

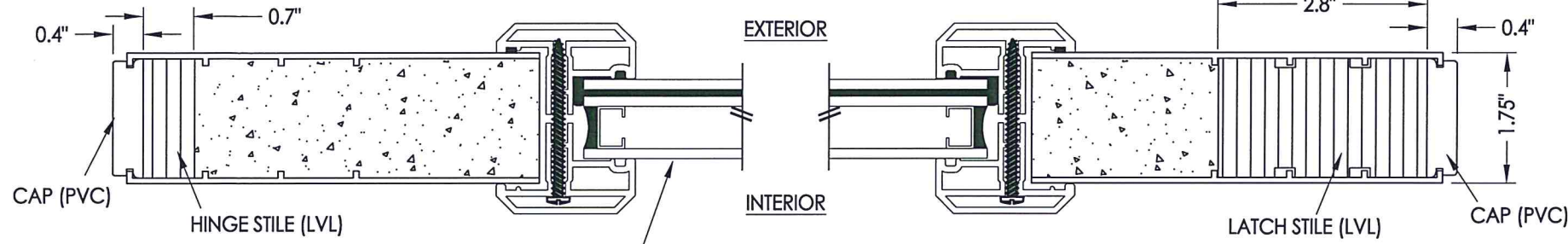
TEXAS BOARD OF PROFESSIONAL ENGINEERS  
CERTIFICATE OF REGISTRATION # F-11852

PRODUCT: PLASTPRO FIBERGLASS DOOR

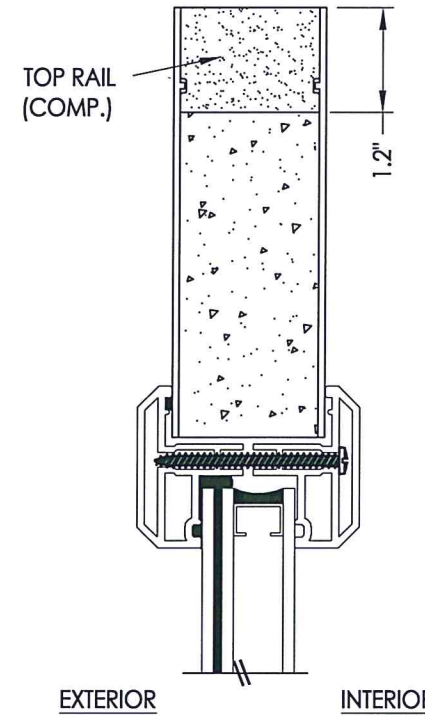
PART OR ASSEMBLY: DOOR PANEL DETAILS

| NO. | DATE    | REVISIONS  |
|-----|---------|--|
| 2   | 5/07/20 | UPDATE TO 2018 IBC/IRC CODE AND REVISE IMPACT LITE FRAME |
| 1   | 7/11/18 | CORRECTED TITLE TO "IMPACT"                              |

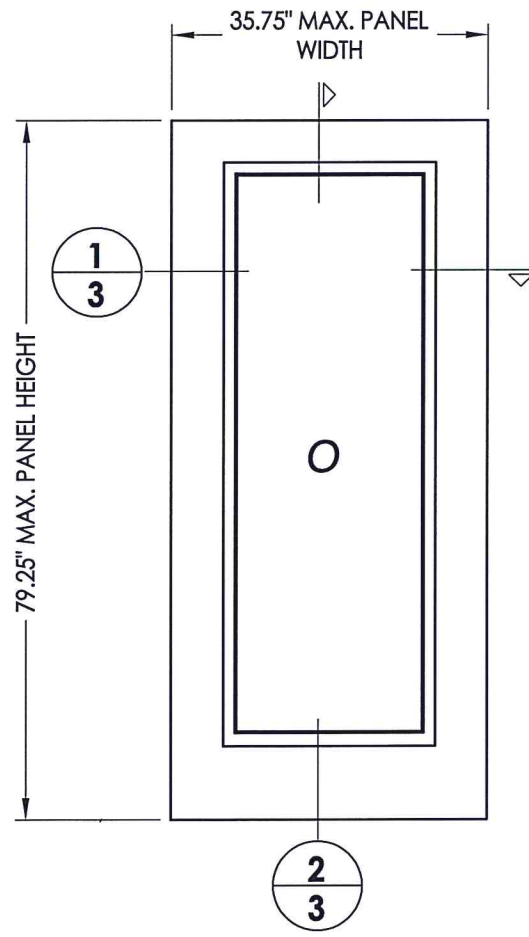
DATE: 11/11/14  
SCALE: N.T.S.  
DWG. BY: JK  
CHK. BY: LFS  
DRAWING NO.: TX-4480  
SHEET 2 of 10



**1**  
**3** HORIZONTAL CROSS SECTION



**2**  
**3** VERTICAL CROSS SECTION



**50** PLASTPRO SIDELITE PANEL



Documents Prepared By: Lyndon F. Schmidt, P.E.  
TEXAS P.E. #104123

**RW** BUILDING CONSULTANTS, INC.  
P.O. Box 230 Vairico FL 33595  
Phone No.: 813.659.9197

TEXAS BOARD OF PROFESSIONAL ENGINEERS  
CERTIFICATE OF REGISTRATION # F-11852

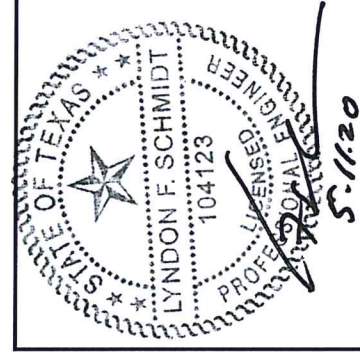
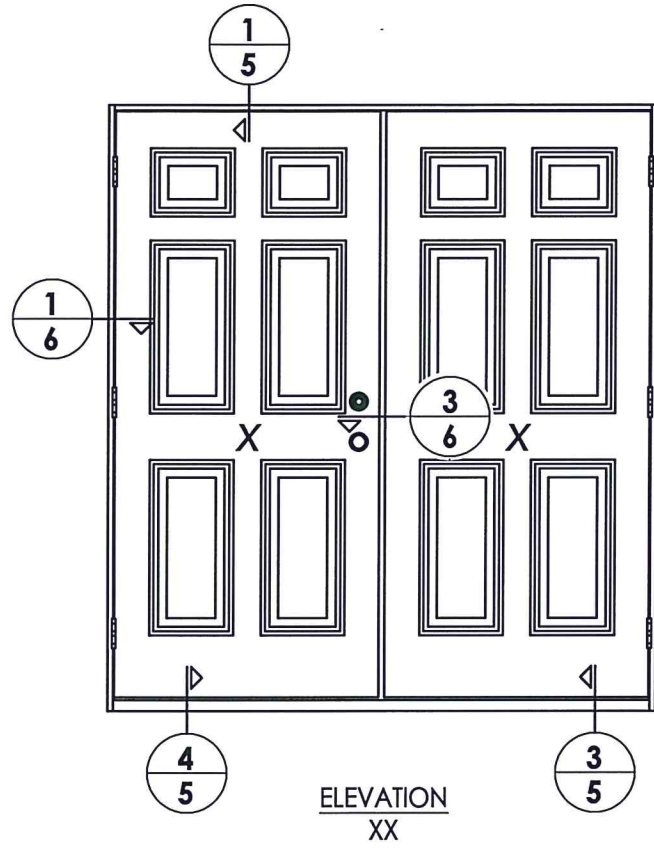
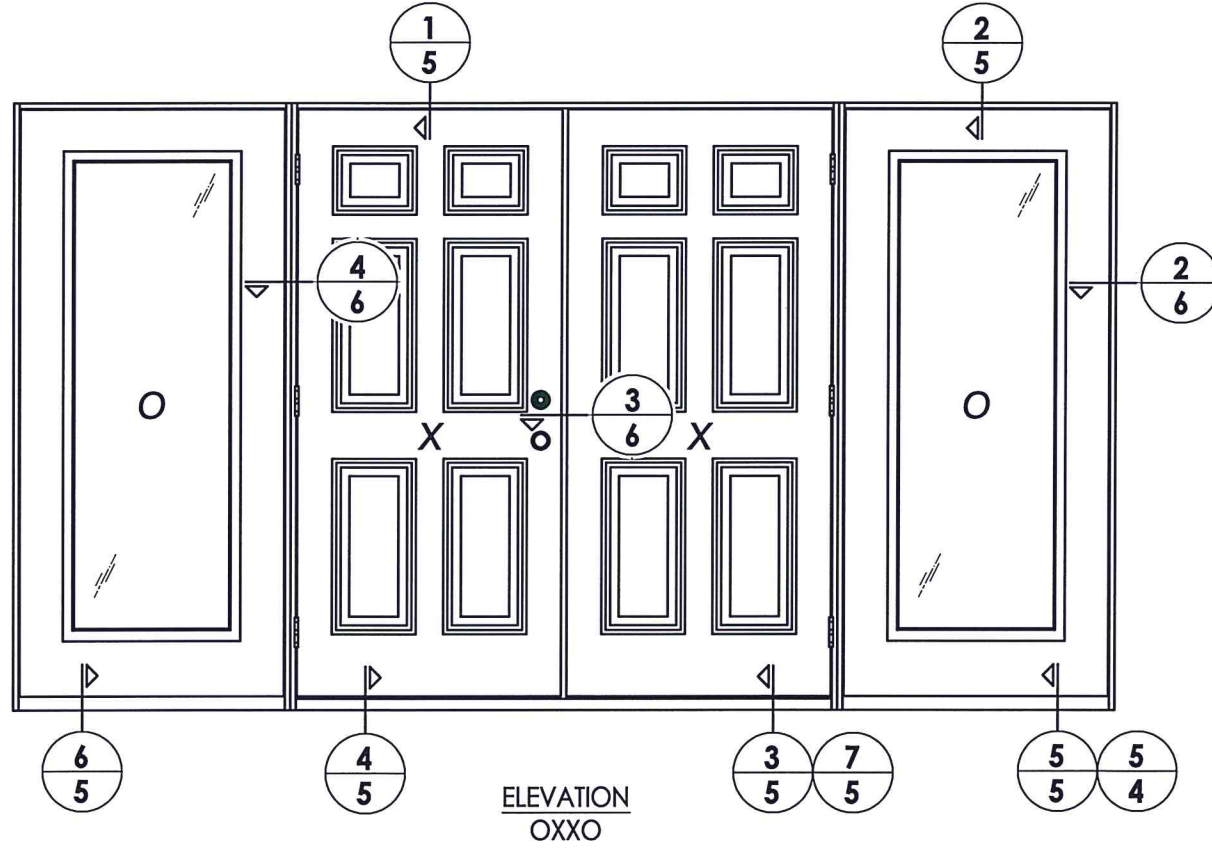
PRODUCT: PLASTPRO FIBERGLASS DOOR

PART OR ASSEMBLY: SIDELITE PANEL DETAILS

| REVISIONS |         |
|-----------|---------|
| NO.       | DATE    |
| 2         | 5/07/20 |
| 1         | 7/11/18 |

DATE: 11/11/14  
SCALE: N.T.S.  
DWG. BY: JK  
CHK. BY: LFS  
DRAWING NO.: TX-4480  
SHEET 3 OF 10





Documents Prepared By: Lyndon F. Schmidt, P.E.  
TEXAS P.E. #104123

**RW** BUILDING CONSULTANTS, INC.  
P.O. Box 230 Vairico FL, 33595  
Phone No.: 813.659.9197

TEXAS BOARD OF PROFESSIONAL ENGINEERS  
CERTIFICATE OF REGISTRATION # F-11852

PRODUCT: PLASTPRO  
FIBERGLASS DOOR

PART OR ASSEMBLY:  
ELEVATIONS

| REVISIONS |         |     |
|-----------|---------|-----|
| NO.       | DATE    | BY  |
| 2         | 5/07/20 | LFS |
| 1         | 7/11/18 | LFS |

DATE: 11/11/14

SCALE: N.T.S.

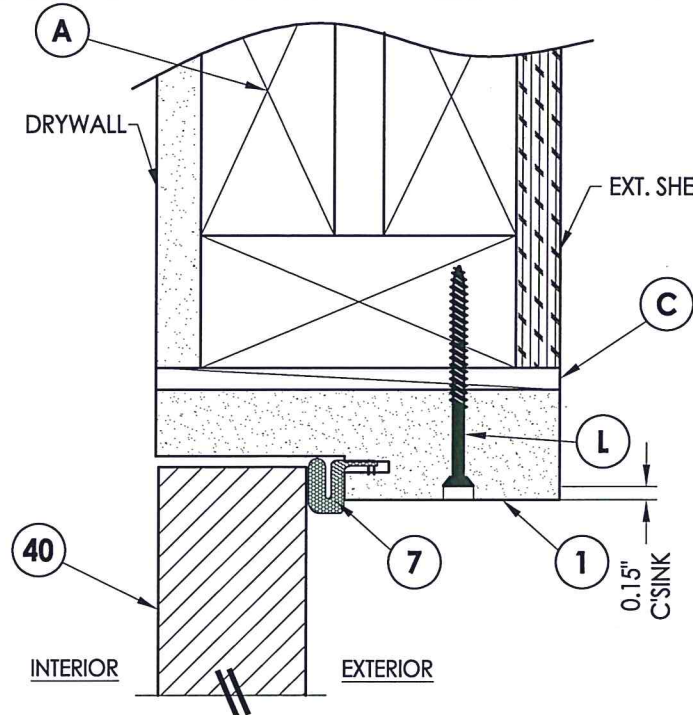
DWG. BY: JK

CHK. BY: LFS

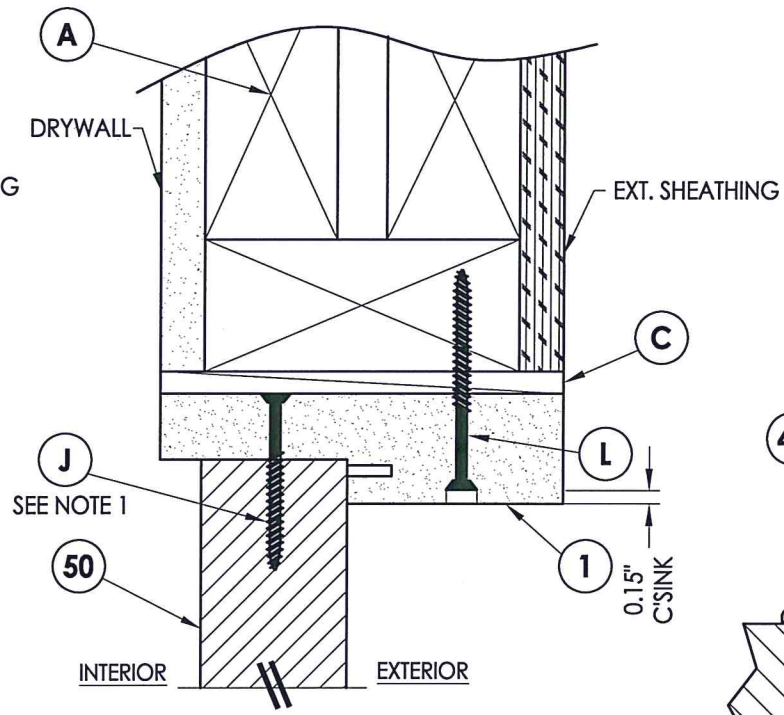
DRAWING NO.: TX-4480

SHEET 4 OF 10

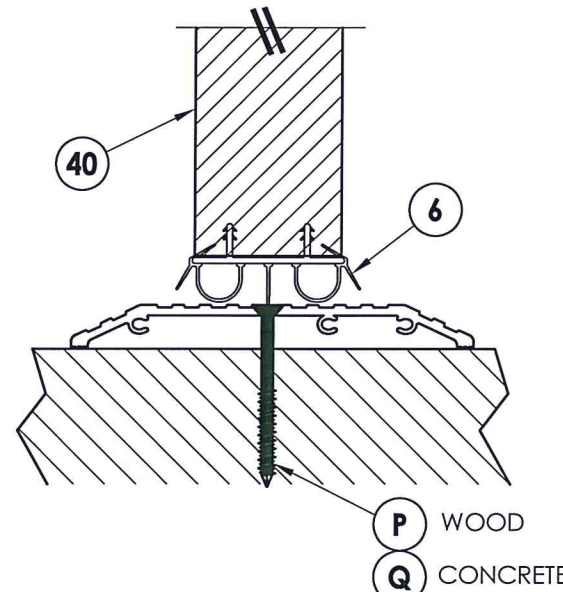




**1** VERTICAL CROSS SECTION  
5 Inswing shown (Outswing similar)

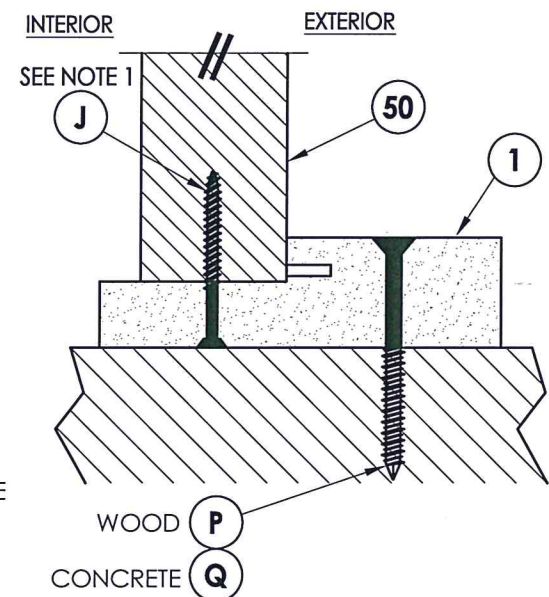


**2** VERTICAL CROSS SECTION  
5 Inswing shown (Outswing similar)

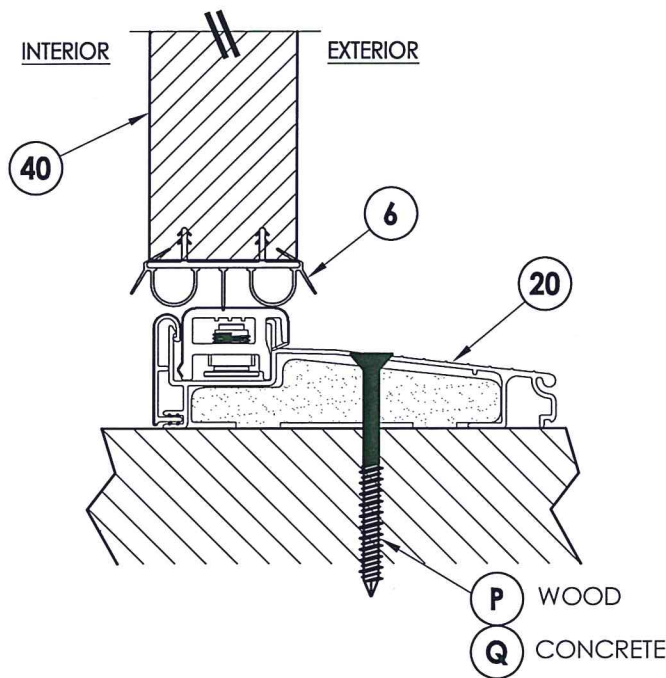


**7** VERTICAL CROSS SECTION  
5 ADA sill

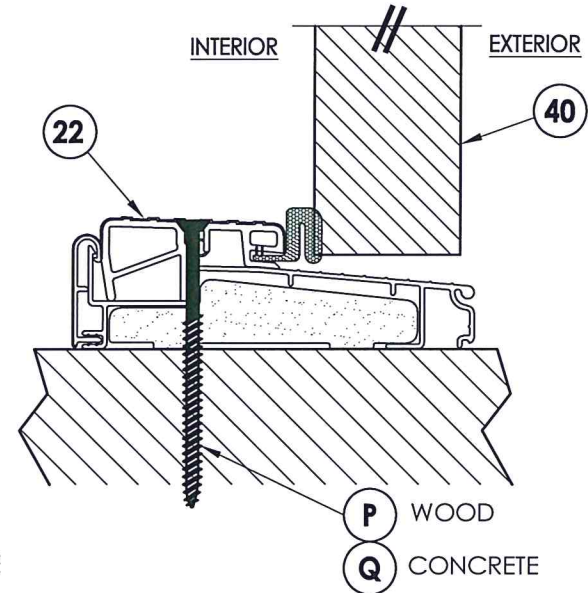
NOTE:  
1. Spacing for item J @ head & sill:  
6" from each end plus 1 @  
centerline (3 total).



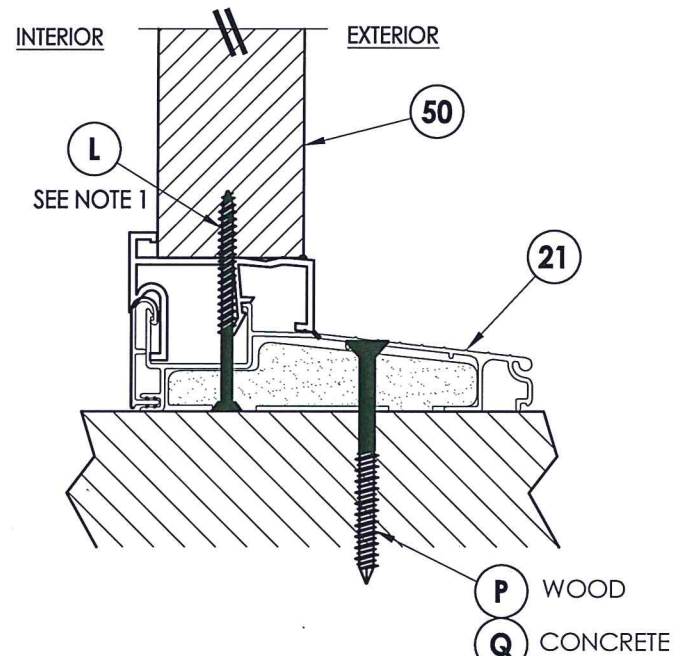
**8** VERTICAL CROSS SECTION  
5 Inswing shown (Outswing similar)



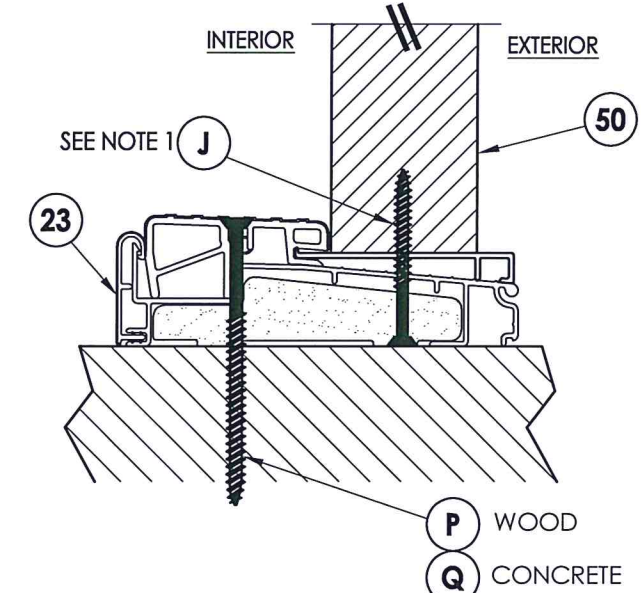
**3** VERTICAL CROSS SECTION  
5 Inswing sill



**5** VERTICAL CROSS SECTION  
4 Outswing sill



**5** VERTICAL CROSS SECTION  
5 Inswing sill



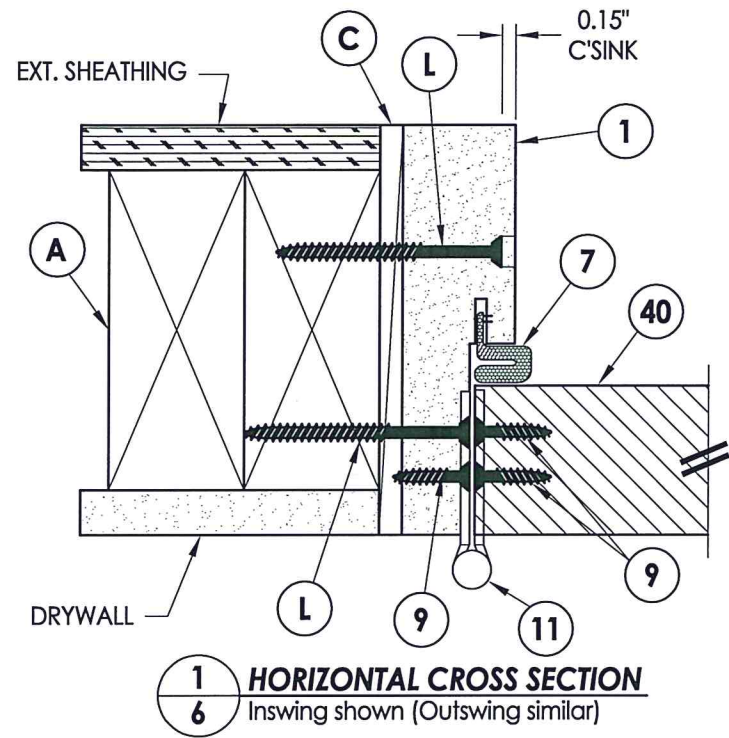
**6** VERTICAL CROSS SECTION  
5 Outswing sill

Documents Prepared By: Lyndon F. Schmidt, P.E. #104123  
 R.W. BUILDING CONSULTANTS, INC.  
 P.O. Box 230 Valrico FL 33595  
 Phone No.: 813.659.9197  
 TEXAS BOARD OF PROFESSIONAL ENGINEERS  
 CERTIFICATE OF REGISTRATION # F-11852

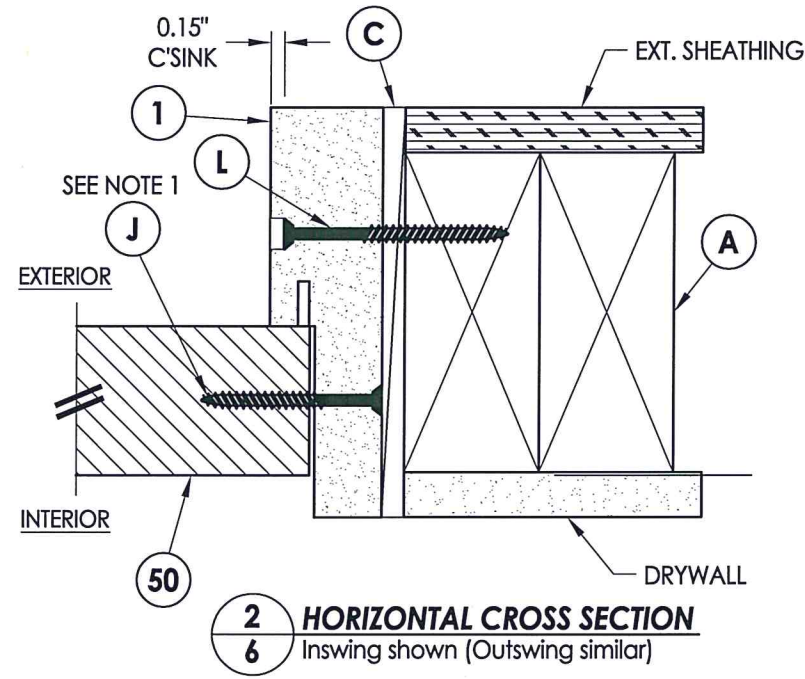
|                   |                             |
|-------------------|-----------------------------|
| PRODUCT:          | PLASTPRO<br>FIBERGLASS DOOR |
| PART OR ASSEMBLY: | VERTICAL CROSS<br>SECTIONS  |
| DATE:             | 11/11/14                    |
| SCALE:            | N.T.S.                      |
| DWG. BY:          | JK                          |
| CHK. BY:          | LFS                         |
| DRAWING NO.:      | TX-4480                     |
| SHEET             | 5 of 10                     |

| NO. | DATE    | BY  | REVISIONS  |
|-----|---------|-----|--|
| 2   | 5/07/20 | LFS | UPDATE TO 2018 IBC/IRC CODE AND REVISE IMPACT LITE FRAME |
| 1   | 7/11/18 | LFS | CORRECTED TITLE TO "IMPACT"                              |

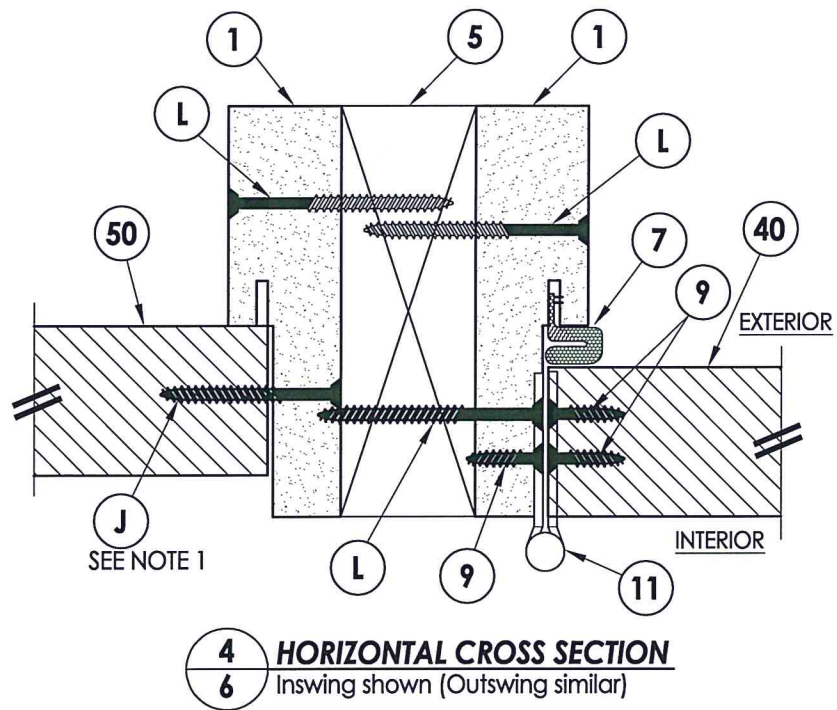




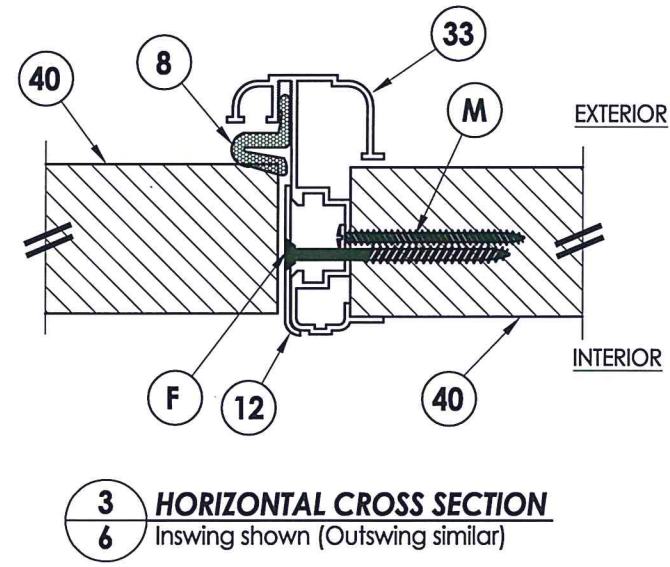
**1** HORIZONTAL CROSS SECTION  
6 Inswing shown (Outswing similar)



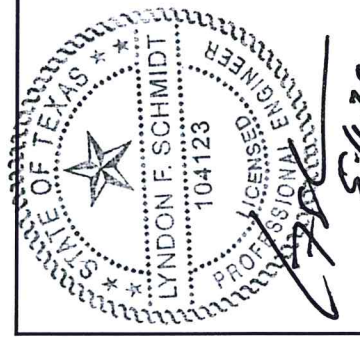
**2** HORIZONTAL CROSS SECTION  
6 Inswing shown (Outswing similar)



**4** HORIZONTAL CROSS SECTION  
6 Inswing shown (Outswing similar)



**3** HORIZONTAL CROSS SECTION  
6 Inswing shown (Outswing similar)



NOTE:  
1. Spacing for sidelite to frame screws: 6" from each end and 5 more equally spaced along sidelite jamb (7 total).

Documents Prepared By: Lyndon F. Schmidt, P.E.  
TEXAS P.E. #104123

RW BUILDING CONSULTANTS, INC.  
P.O. Box 230 Valrico FL 33595  
Phone No.: 813.659.9197

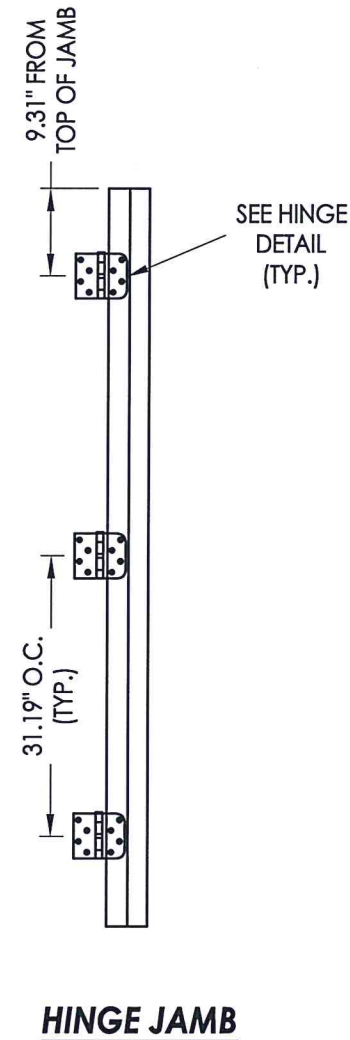
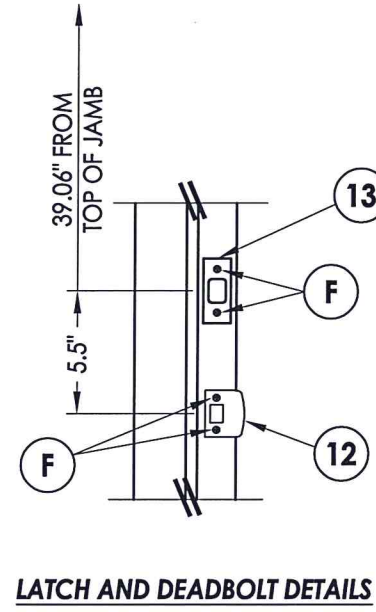
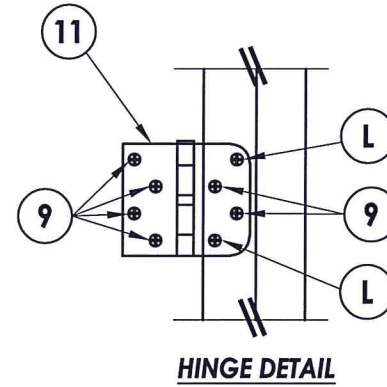
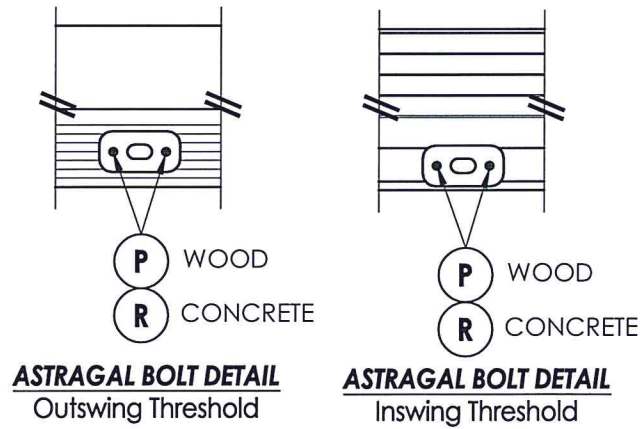
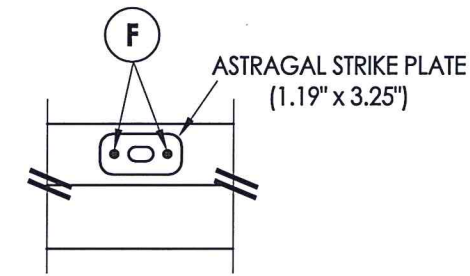
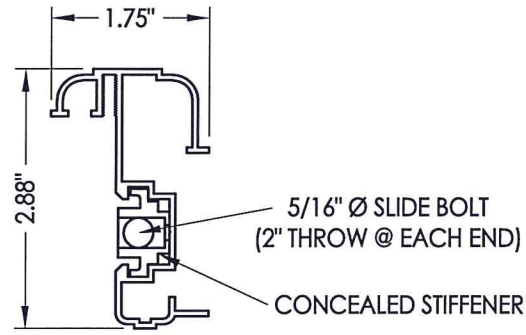
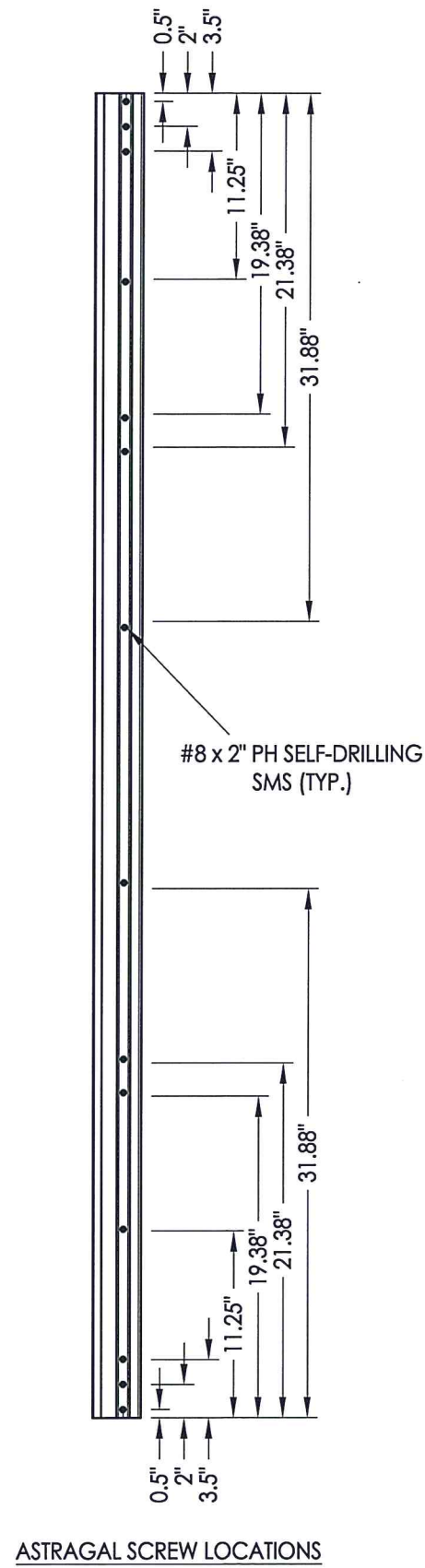
TEXAS BOARD OF PROFESSIONAL ENGINEERS  
CERTIFICATE OF REGISTRATION # F-11852

PRODUCT: PLASTIPRO FIBERGLASS DOOR

PART OR ASSEMBLY: HORIZONTAL CROSS SECTIONS

| NO. | DATE    | REVISIONS  |
|-----|---------|--|
| 2   | 5/07/20 | UPDATE TO 2018 IBC/IRC CODE AND REVISE IMPACT LITE FRAME |
| 1   | 7/11/18 | CORRECTED TITLE TO "IMPACT"                              |
|     |         |  |
|     |         |  |
|     |         |  |

DATE: 11/11/14  
SCALE: N.T.S.  
DWG. BY: JK  
CHK. BY: LFS  
DRAWING NO.: TX-4480  
SHEET 6 OF 10



Documents Prepared By: Lyndon F. Schmidt, P.E.  
TEXAS P.E. #104123

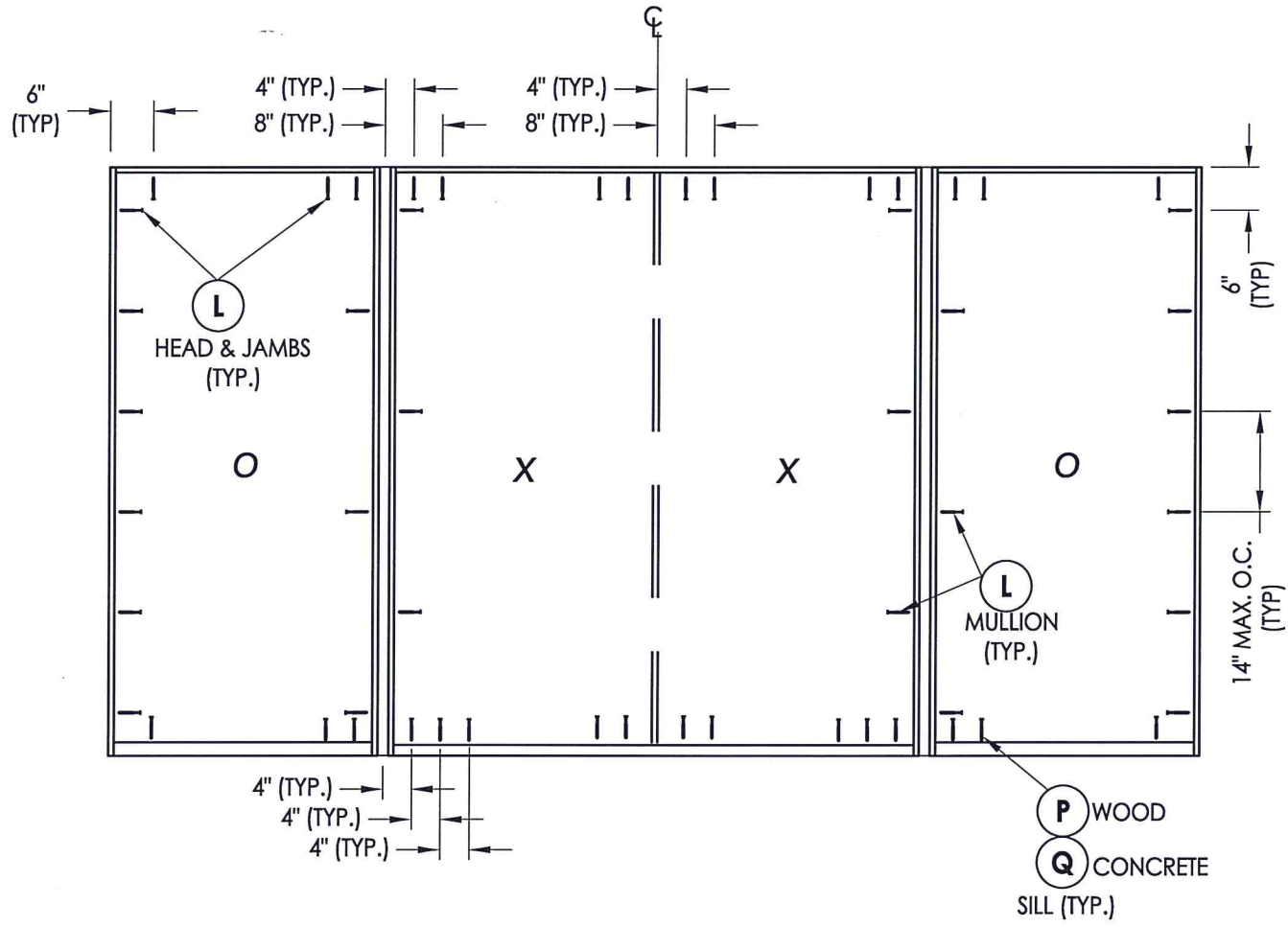
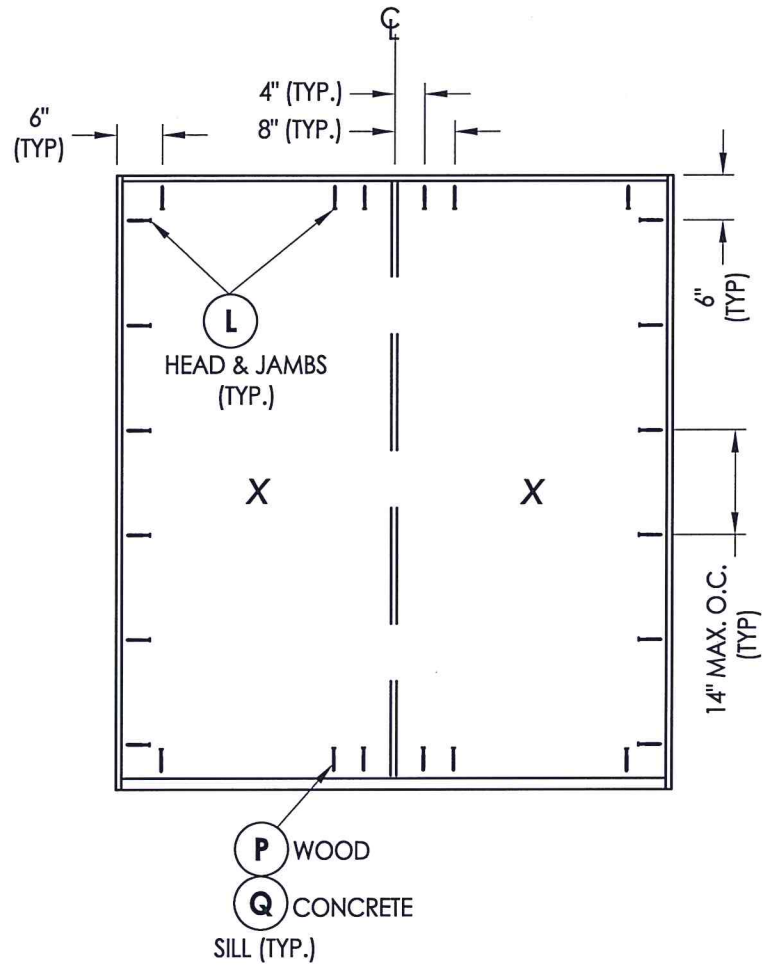
**RW** BUILDING CONSULTANTS, INC.  
P.O. Box 230 Valrico FL 33595  
Phone No.: 813.659.9197

TEXAS BOARD OF PROFESSIONAL ENGINEERS  
CERTIFICATE OF REGISTRATION # F-11852

|                   |                          |  |
|-------------------|--------------------------|--|
| PRODUCT:          | PLASTPRO FIBERGLASS DOOR |  |
| PART OR ASSEMBLY: | HARDWARE DETAILS         |  |
| NO.               | DATE                     | REVISIONS  |
| 2                 | 5/07/20                  | UPDATE TO 2018 IBC/IRC CODE AND REVISE IMPACT LITE FRAME CORRECTED TITLE TO "IMPACT" |
| 1                 | 7/11/18                  |  |
| LFS               | BY                       |  |

DATE: 11/11/14  
SCALE: N.T.S.  
DWG. BY: JK  
CHK. BY: LFS  
DRAWING NO.: TX-4480  
SHEET 7 OF 10





**FRAME ANCHORING**  
 2X stud framing  
 w/ wood/concrete substrate



Documents Prepared By: Lyndon F. Schmidt, P.E.  
 TEXAS P.E. #104123

**RW** BUILDING CONSULTANTS, INC.  
 P.O. Box 230 Valrico FL 33595  
 Phone No.: 813.659.9197

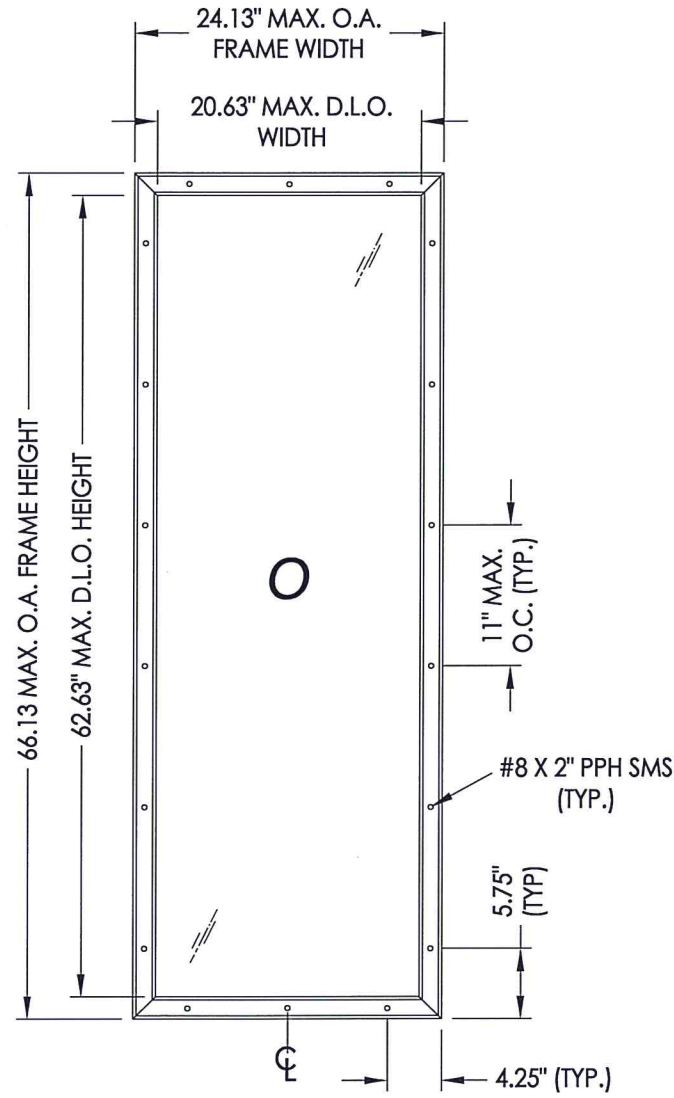
TEXAS BOARD OF PROFESSIONAL ENGINEERS  
 CERTIFICATE OF REGISTRATION # F-11852

PRODUCT: PLASTPRO FIBERGLASS DOOR  
 PART OR ASSEMBLY: FRAME ANCHORING

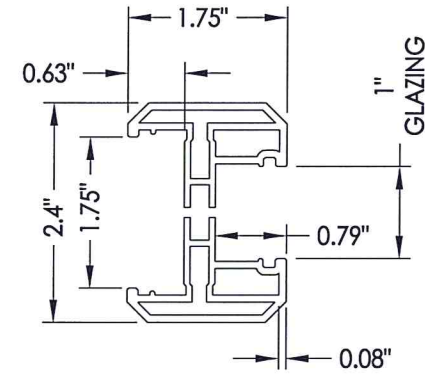
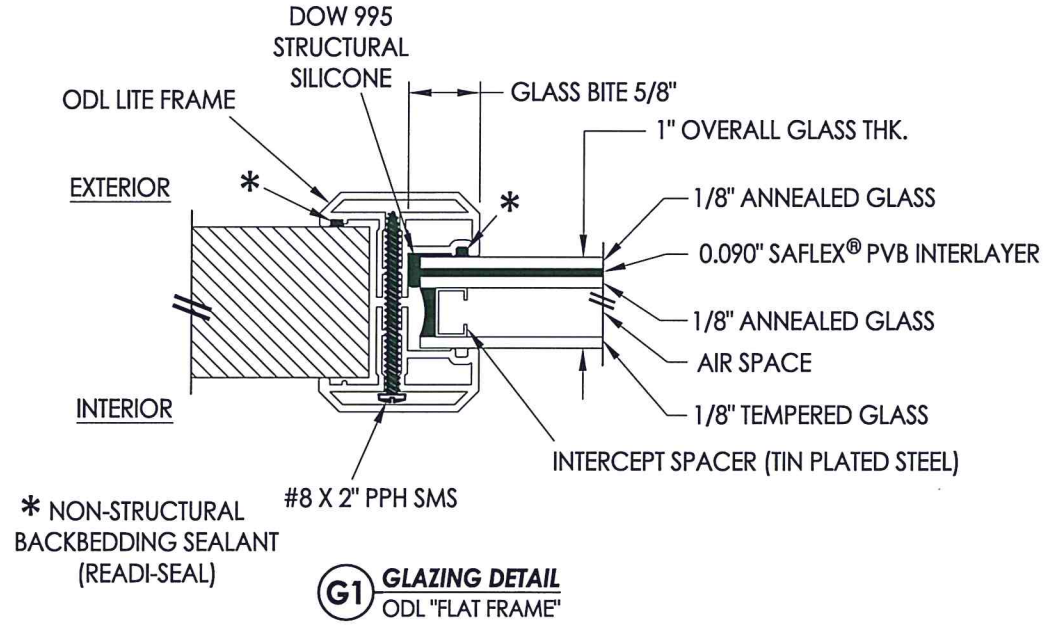
| NO. | DATE    | REVISIONS  |
|-----|---------|--|
| 2   | 5/07/20 | UPDATE TO 2018 IBC/IRC CODE AND REVISE IMPACT LITE FRAME |
| 1   | 7/11/18 | CORRECTED TITLE TO "IMPACT"                              |

DATE: 11/11/14  
 SCALE: N.T.S.  
 DWG. BY: JK  
 CHK. BY: LFS  
 DRAWING NO.: TX-4480  
 SHEET 8 OF 10





ODL LITE FRAME DETAIL  
"FLAT FRAME" PROFILE



ODL LITE FRAME  
"FLAT FRAME"  
(6063-T5 ALUM)



Documents Prepared By: Lyndon F. Schmidt, P.E.  
TEXAS P.E. #104123

**RW** BUILDING CONSULTANTS, INC.  
P.O. Box 230 Valrico FL 33595  
Phone No.: 813.659.9197

TEXAS BOARD OF PROFESSIONAL ENGINEERS  
CERTIFICATE OF REGISTRATION # F-11852

PRODUCT: PLASTPRO FIBERGLASS DOOR

PART OR ASSEMBLY: LITE FRAME & GLAZING DETAILS

| NO. | DATE    | REVISIONS  |
|-----|---------|--|
| 2   | 5/07/20 | UPDATE TO 2018 IBC/IRC CODE AND REVISE IMPACT LITE FRAME |
| 1   | 7/11/18 | CORRECTED TITLE TO "IMPACT"                              |
|     |         | BY   |

DATE: 11/11/14

SCALE: N.T.S.

DWG. BY: JK

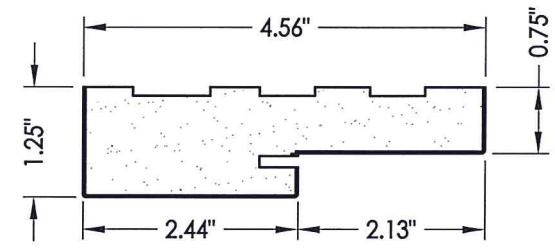
CHK. BY: LFS

DRAWING NO.: TX-4480

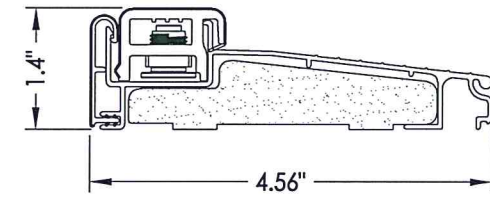
SHEET 9 OF 10

R:\Clients\Plastpro, Inc PERMANENT\B - TD\TDI - DR 461 68 Opaque Impact Sgl Dbl w-wo Sidelites\Drawings\TX-4480.dwg, 10.2

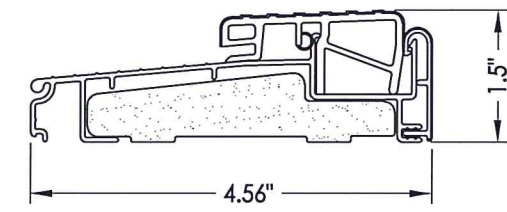
| BILL OF MATERIALS |   |           |
|-------------------|---|-----------|
| ITEM #            | DESCRIPTION                                   | MATERIAL  |
| A                 | 2X FRAMING (SG >= 0.42)                       | WOOD      |
| C                 | 1/4" MAX. SHIM SPACE                          | -         |
| F                 | #10 X 2-1/2" PFH WOOD SCREW                   | STEEL     |
| J                 | #10 X 2" PFH WOOD SCREW                       | STEEL     |
| L                 | #10 X 2-1/2" PFH WOOD SCREW (1.15" MIN. EMB.) | STEEL     |
| M                 | #8 X 2" PH SMS                                | STEEL     |
| P                 | #10 PFH WOOD SCREW (1-1/2" MIN. EMB.)         | STEEL     |
| Q                 | 1/4" PFH CONCRETE SCREW (1-3/4" MIN. EMB.)    | STEEL     |
| R                 | 3/16" PFH CONCRETE SCREW (1-3/4" MIN. EMB.)   | STEEL     |
| 1                 | POLY FIBER JAMB                               | COMP.     |
| 5                 | 2X REINFORCEMENT (SG >= 0.55)                 | WOOD      |
| 6                 | SWEEP   | PVC       |
| 7                 | WEATHERSTRIP (ENDURA FORCE 5)                 | FOAM      |
| 8                 | WEATHERSTRIP (Q-LON)                          | FOAM      |
| 9                 | #10 x 1" PFH WOOD SCREW                       | STEEL     |
| 11                | 4" X 4" HINGE                                 | STEEL     |
| 12                | LATCH STRIKE PLATE                            | STEEL     |
| 13                | DEADBOLT STRIKE PLATE                         | STEEL     |
| 20                | INSWING THRESHOLD                             | ALUM/COMP |
| 21                | INSWING THRESHOLD w/ SIDELITE ADAPTER         | ALUM/COMP |
| 22                | OUTSWING THRESHOLD                            | ALUM/COMP |
| 23                | OUTSWING THRESHOLD w/ SIDELITE ADAPTER        | ALUM/COMP |
| 33                | ASTRAGAL (DLP)                                | ALUM      |
| 40                | DOOR PANEL                                    | -         |
| 50                | SIDELITE PANEL                                | -         |



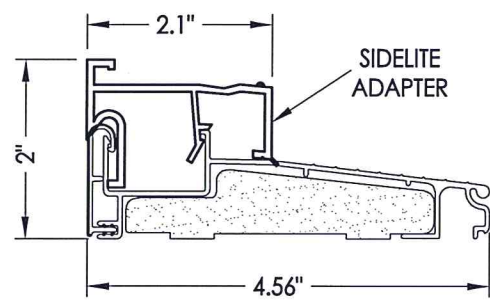
1 POLY FIBER JAMB



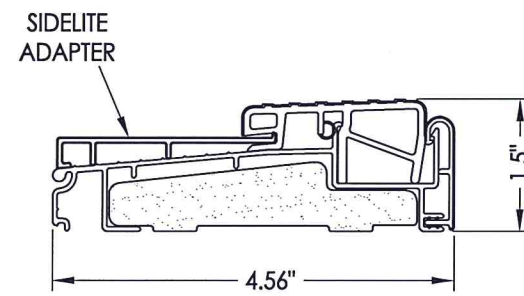
20 INSWING THRESHOLD  
Endura (Z-Series)



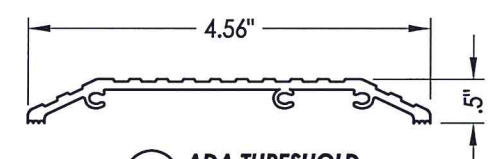
22 OUTSWING THRESHOLD  
Endura (Z-Series)



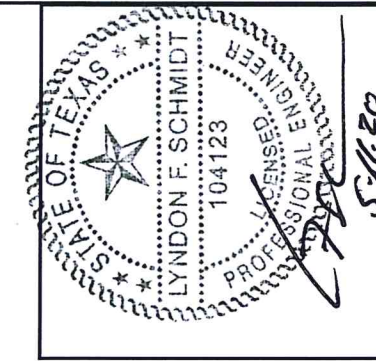
21 INSWING THRESHOLD w/ SIDELITE ADAPTER  
Endura (Z-Series)



23 OUTSWING THRESHOLD w/ SIDELITE ADAPTER  
Endura (Z-Series)



24 ADA THRESHOLD  
DLP



Documents Prepared By: Lyndon F. Schmidt, P.E.  
TEXAS P.E. #104123

**RW** BUILDING CONSULTANTS, INC.  
P.O. Box 230 Vairico FL 33595  
Phone No.: 813.659.9197

TEXAS BOARD OF PROFESSIONAL ENGINEERS  
CERTIFICATE OF REGISTRATION # F-11852

PRODUCT: PLASTPRO FIBERGLASS DOOR

PART OR ASSEMBLY: BILL OF MATERIALS & COMPONENTS

| NO. | DATE    | REVISIONS  |
|-----|---------|--|
| 2   | 5/07/20 | UPDATE TO 2018 IBC/IRC CODE AND REVISE IMPACT LITE FRAME |
| 1   | 7/11/18 | CORRECTED TITLE TO "IMPACT"                              |

DATE: 11/11/14  
SCALE: N.T.S.  
DWG. BY: JK  
CHK. BY: LFS  
DRAWING NO.: TX-4480  
SHEET 10 of 10

**CONCRETE ANCHOR NOTES:**

- Concrete anchor locations at the corners may be adjusted to maintain the min. edge distance to mortar joints.
- Concrete anchor locations noted as "MAX. ON CENTER" must be adjusted to maintain the min. edge distance to mortar joints, additional concrete anchors may be required to ensure the "MAX. ON CENTER" dimension are not exceeded.
- Concrete anchor table:

| ANCHOR TYPE    | ANCHOR SIZE | MIN. EMBEDMENT | MIN. CLEARANCE TO MASONRY EDGE | MIN. CLEARANCE TO ADJACENT ANCHOR |
|----------------|-------------|----------------|--------------------------------|-----------------------------------|
| ITW TAPCON®    | 3/16"       | 1-3/4"         | 3"                             | 1-1/2"                            |
|                | 1/4"        | 1-3/4"         | 1-1/2"                         | 4"                                |
| ELCO ULTRACON® | 1/4"        | 1-3/4"         | 1"                             | 4"                                |