

plastpro

5200 W. CENTURY BLVD.
LOS ANGELES, CA 90045

GLAZED FIBERGLASS DOUBLE DOOR w/ or w/out SIDELITES INSWING / OUTSWING "NON-IMPACT"

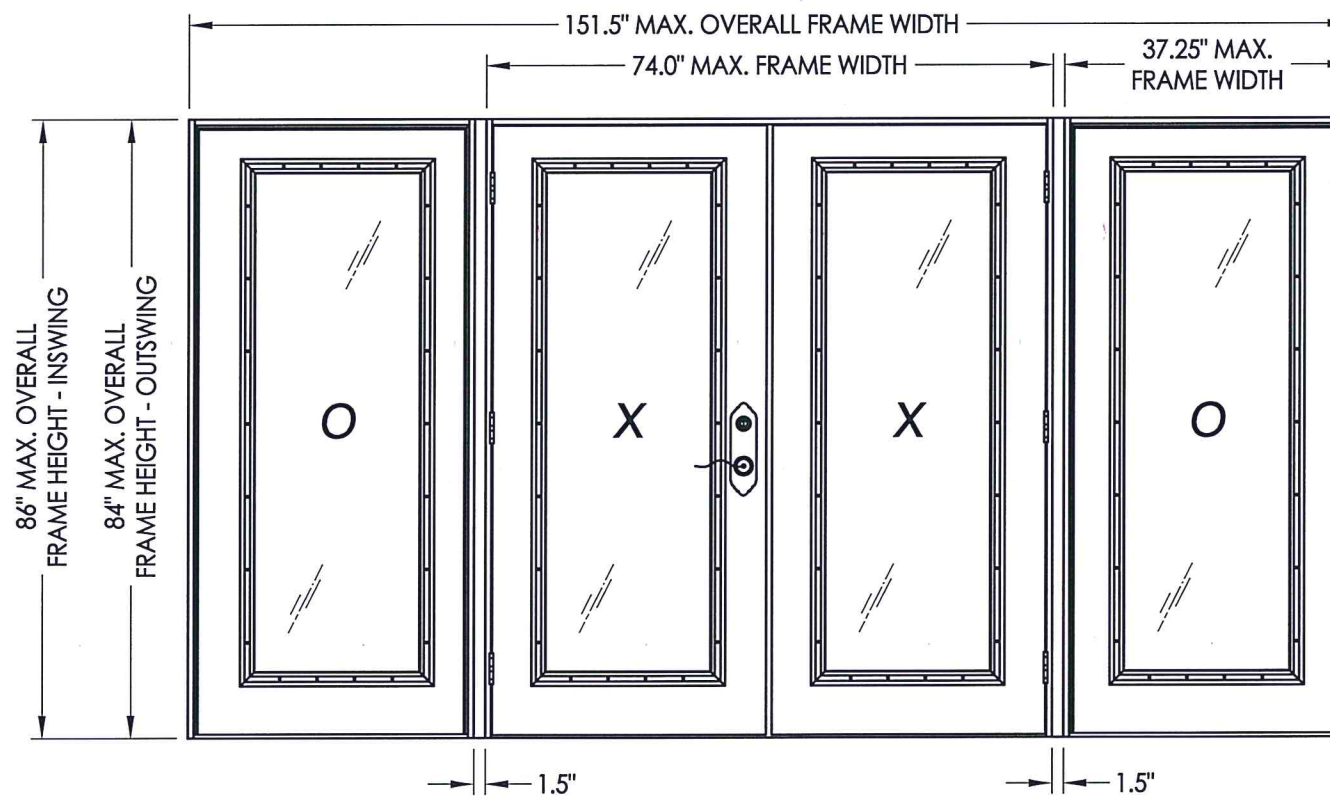
EVALUATED FOR USE IN THE STATE OF TEXAS

The Fiberglass Door system described herein complies with the 2018 International Residential Code (IRC), Sections R301 & R609 and the 2018 International Building Code (IBC), Sections 1404.13, 1609, 1709.5, 2403 and 2404 subject to the following conditions:

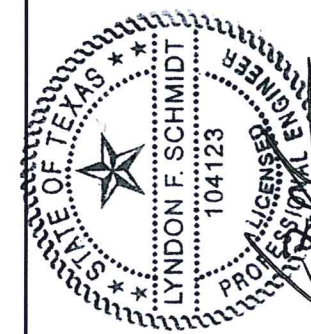
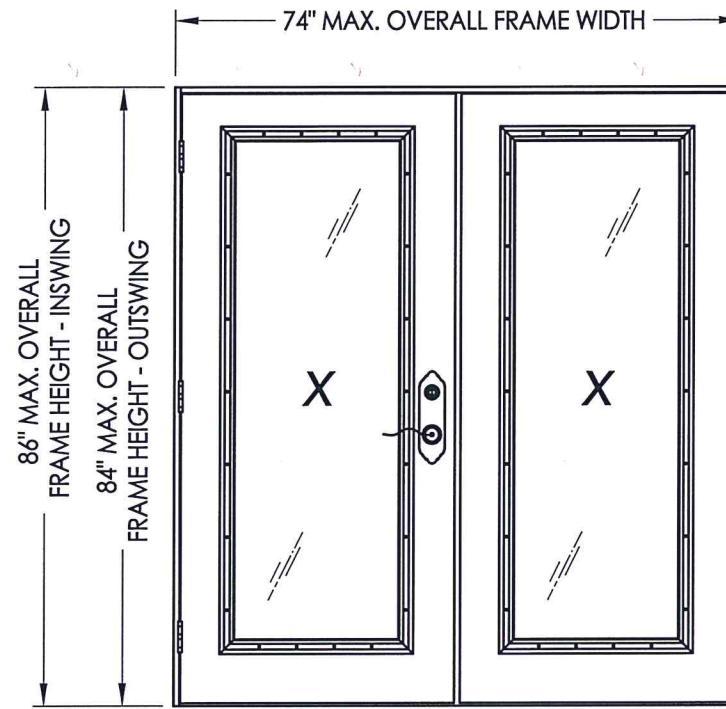
1. Anchors shall be as listed and spaced as shown in the details. Anchor embedment to base material shall be beyond wall dressing or stucco.
2. When used in areas requiring wind-borne debris protection this product is required to be protected with an impact resistant covering that complies with Section R301.2.1.2 of the IRC and Section 1609.1.2 of the IBC.
3. Allowable design pressure requirements must be equal to or less than the design pressure rating shown in the design pressure chart, sheet 1 of this drawing.
4. Conditions not covered by this drawing are subject to further engineering analysis.

TABLE OF CONTENTS

SHEET #	DESCRIPTION
1	Typical elevations, design pressures & general notes
2	Door panel & glazing details
3	Sidelite panel & glazing details
4	Elevations
5	Horizontal cross sections
6	Vertical cross sections
7	Frame anchoring
8	Frame anchoring
9	Astragal & multi-point lock details
10	Components
11	Bill of materials



CONFIGURATION	MAX. FRAME DIMENSION	MAX. D.L.O. DIMENSION	GLASS TYPE	DESIGN PRESSURE (PSF) INSWING		DESIGN PRESSURE (PSF) OUTSWING	
				POSITIVE	NEGATIVE	POSITIVE	NEGATIVE
XX	74.0" x 86.0"	21.0" x 62.5"	G1	+45.0	-45.0	+45.0	-45.0
OXXO	151.5" x 86.0"	21.0" x 62.5"		+45.0	-45.0	+45.0	-45.0



Documents Prepared By: Lyndon F. Schmidt, P.E.
TEXAS P.E. #104123

RW BUILDING CONSULTANTS, INC.
P.O. Box 230 Valrico FL 33595
Phone No.: 813.659.9197

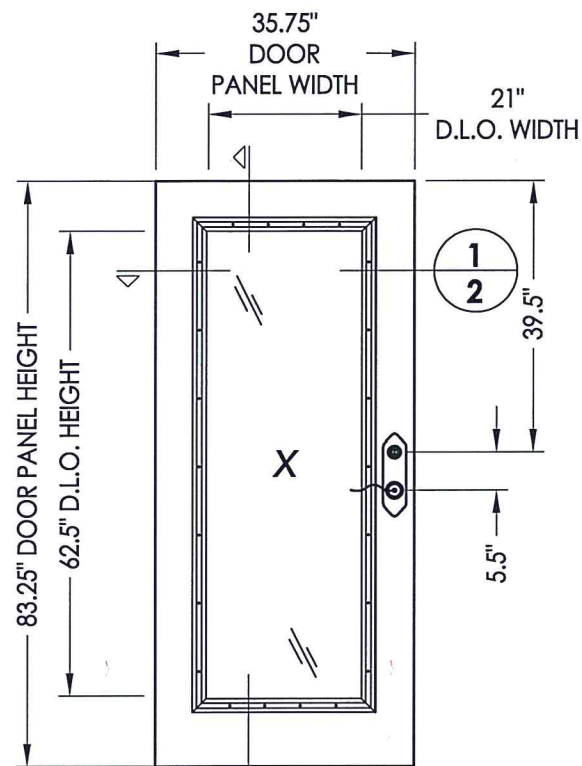
TEXAS BOARD OF PROFESSIONAL ENGINEERS
CERTIFICATE OF REGISTRATION # F-11852

PRODUCT: PLASTPRO FIBERGLASS DOOR
PART OR ASSEMBLY: TYPICAL ELEVATION, DESIGN PRESSURES & GENERAL NOTES

NO.	DATE	REVISIONS
1	5/21/20	UPDATE TO 2018 IBC/IRC CODE
		LFS BY

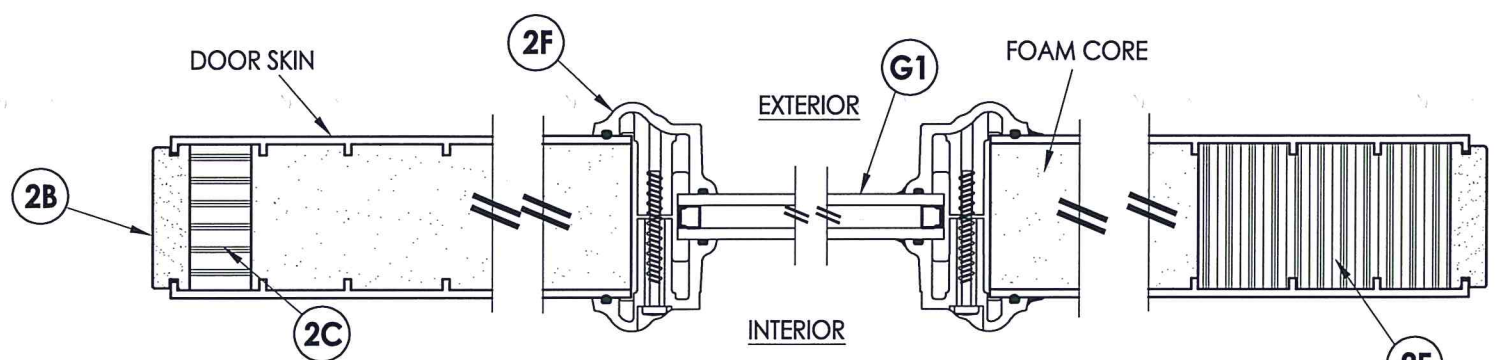
DATE: 03/25/10
SCALE: N.T.S.
DWG. BY: AL
CHK. BY: LFS
DRAWING NO.: TX-4061
SHEET 1 OF 11

R:\Clients\Plastpro, Inc PERMANENT\B - TDI\Hinged Doors - Fiberglass\DR - 441 Glazed Fiberglass (Non-Impact)\C - Drawings\TX-4060.4061.dwg, 2-2

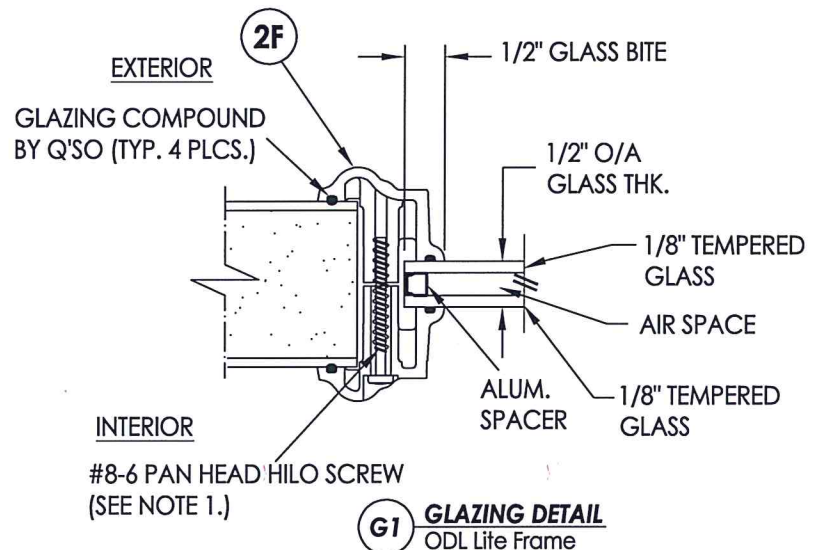


40 DOOR PANEL

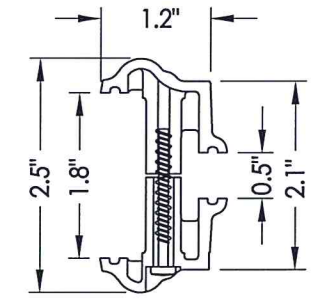
FIBERGLASS DOOR SKIN: MIN. 0.075\"/>



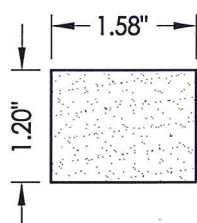
1 HORIZONTAL CROSS SECTION



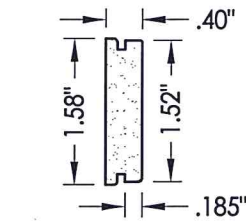
G1 GLAZING DETAIL
ODL Lite Frame



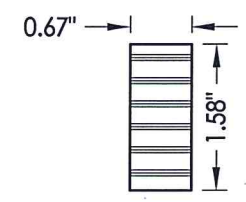
2F PLASTIC LIP LITE FRAME
ODL



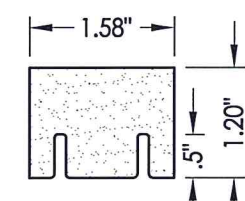
2A TOP RAIL
Cellular PVC



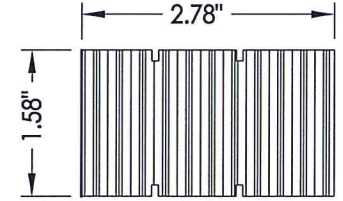
2B LATCH & HINGE STILE
Cellular PVC



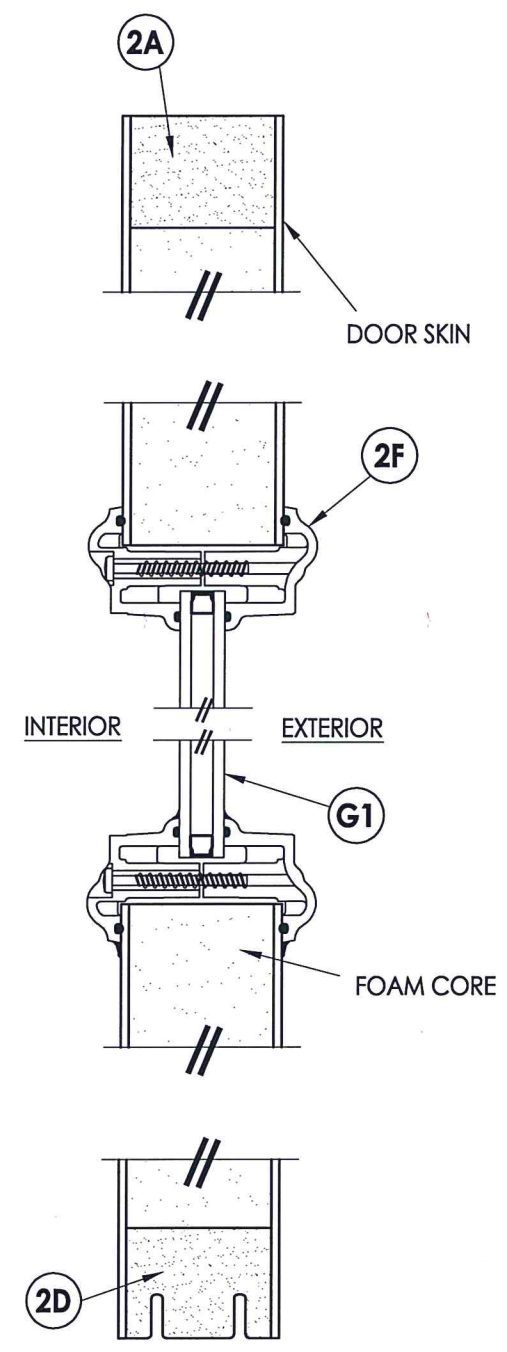
2C HINGE STILE
LVL Reinforcement



2D BOTTOM RAIL
Cellular PVC



2E LATCH STILE
LVL Reinforcement



2 VERTICAL CROSS SECTION



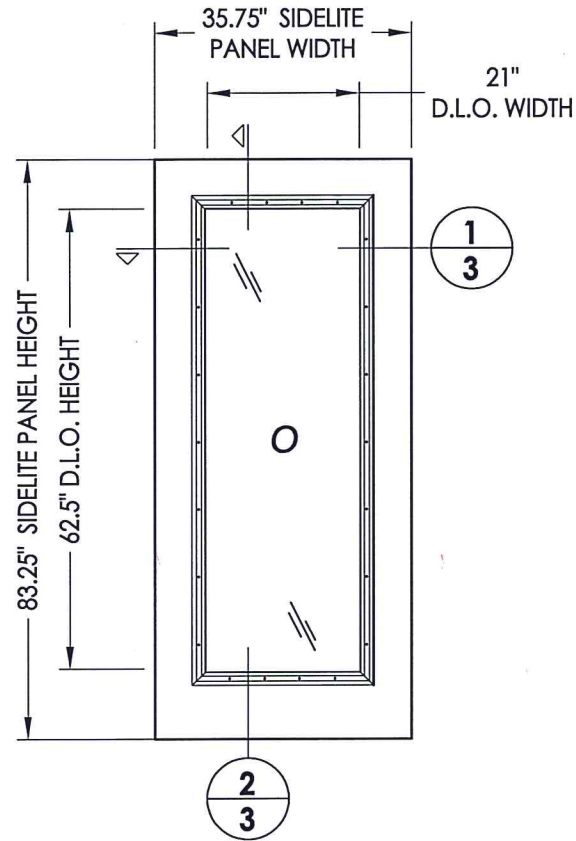
Documents Prepared By: Lyndon F. Schmidt, P.E.
TEXAS P.E. #104123

RW BUILDING CONSULTANTS, INC.
P.O. Box 230 Valrico FL 33595
Phone No.: 813.659.9197
TEXAS BOARD OF PROFESSIONAL ENGINEERS
CERTIFICATE OF REGISTRATION # F-11852

PRODUCT: PLASTPRO FIBERGLASS DOOR
PART OR ASSEMBLY: DOOR PANEL & GLAZING DETAILS

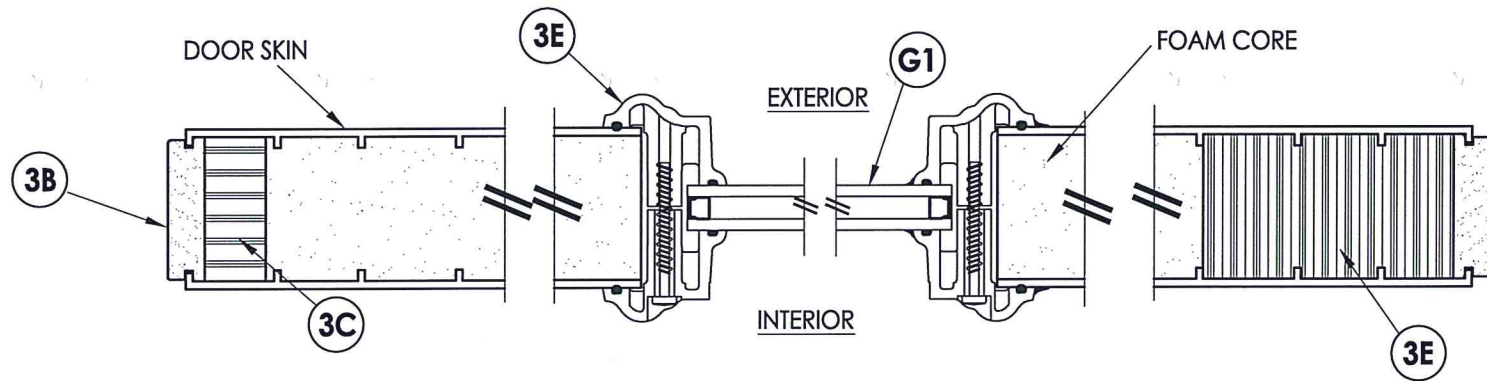
NO.	DATE	REVISIONS
1	5/21/20	UPDATE TO 2018 IBC/IRC CODE
		LFS BY

DATE: 03/25/10
SCALE: N.T.S.
DWG. BY: AL
CHK. BY: LFS
DRAWING NO.: TX-4061
SHEET 2 OF 11

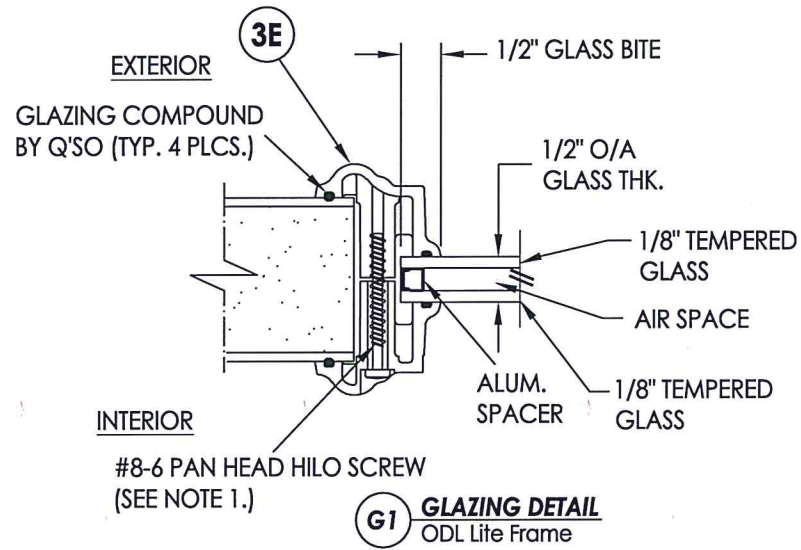


50 SIDELITE PANEL

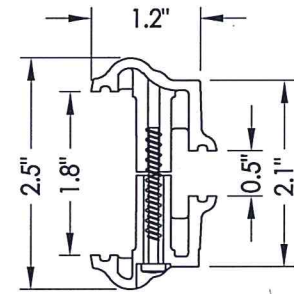
FIBERGLASS SIDELITE SKIN: MIN. 0.075\"/>



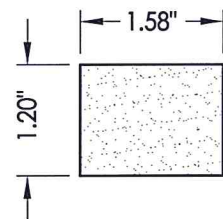
1 HORIZONTAL CROSS SECTION



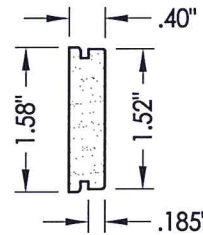
G1 GLAZING DETAIL
ODL Lite Frame



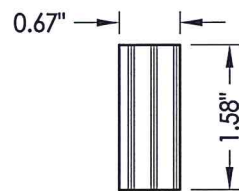
3E PLASTIC LIP LITE FRAME
ODL



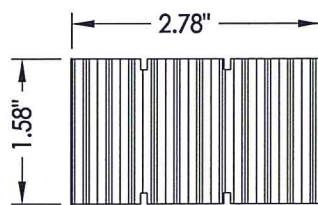
3A TOP RAIL
Cellular PVC



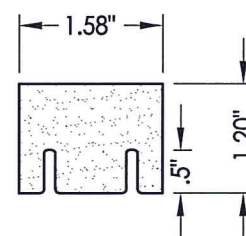
3B STILE
Cellular PVC



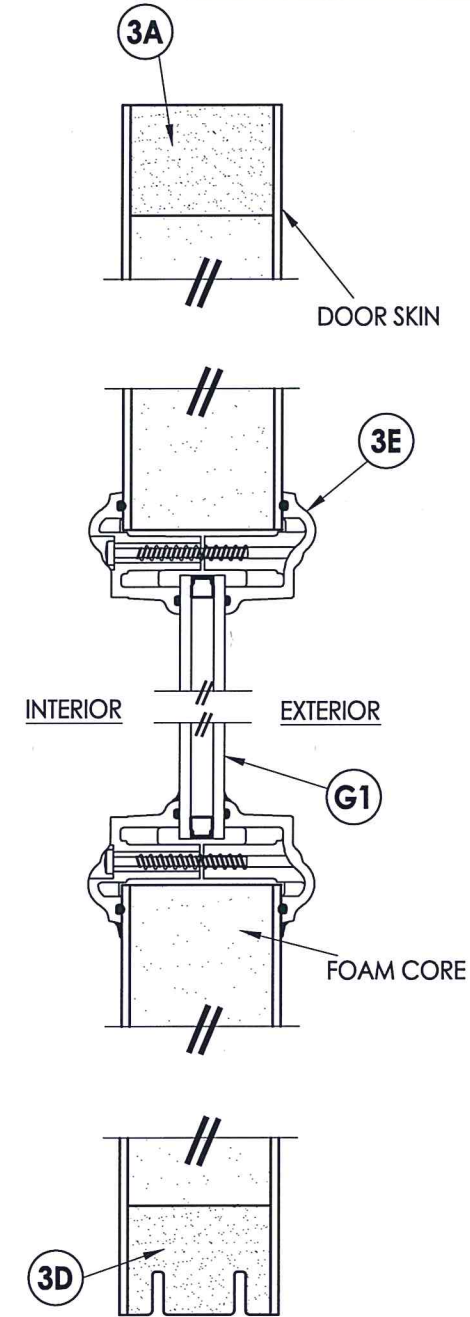
3C STILE
LVL Reinforcement



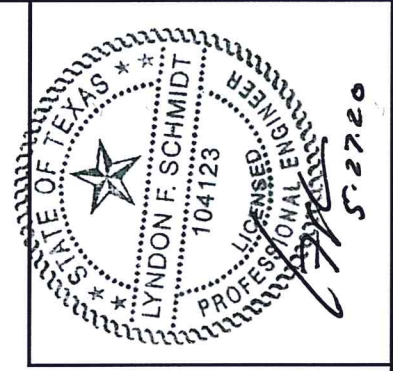
3E STILE
LVL Reinforcement



3D BOTTOM RAIL
Cellular PVC

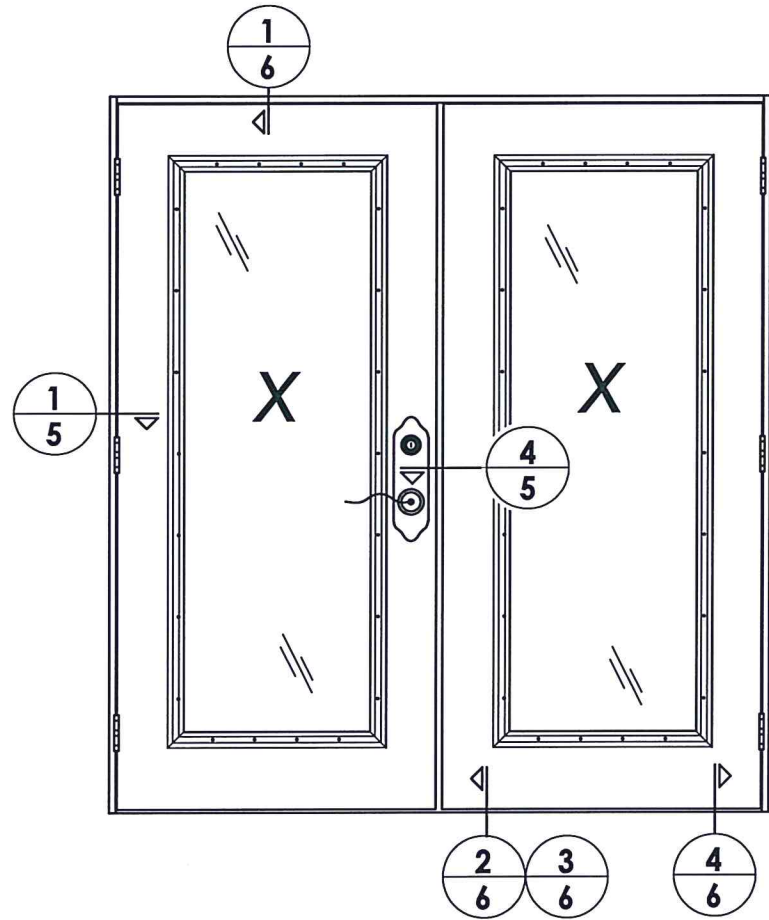


2 VERTICAL CROSS SECTION

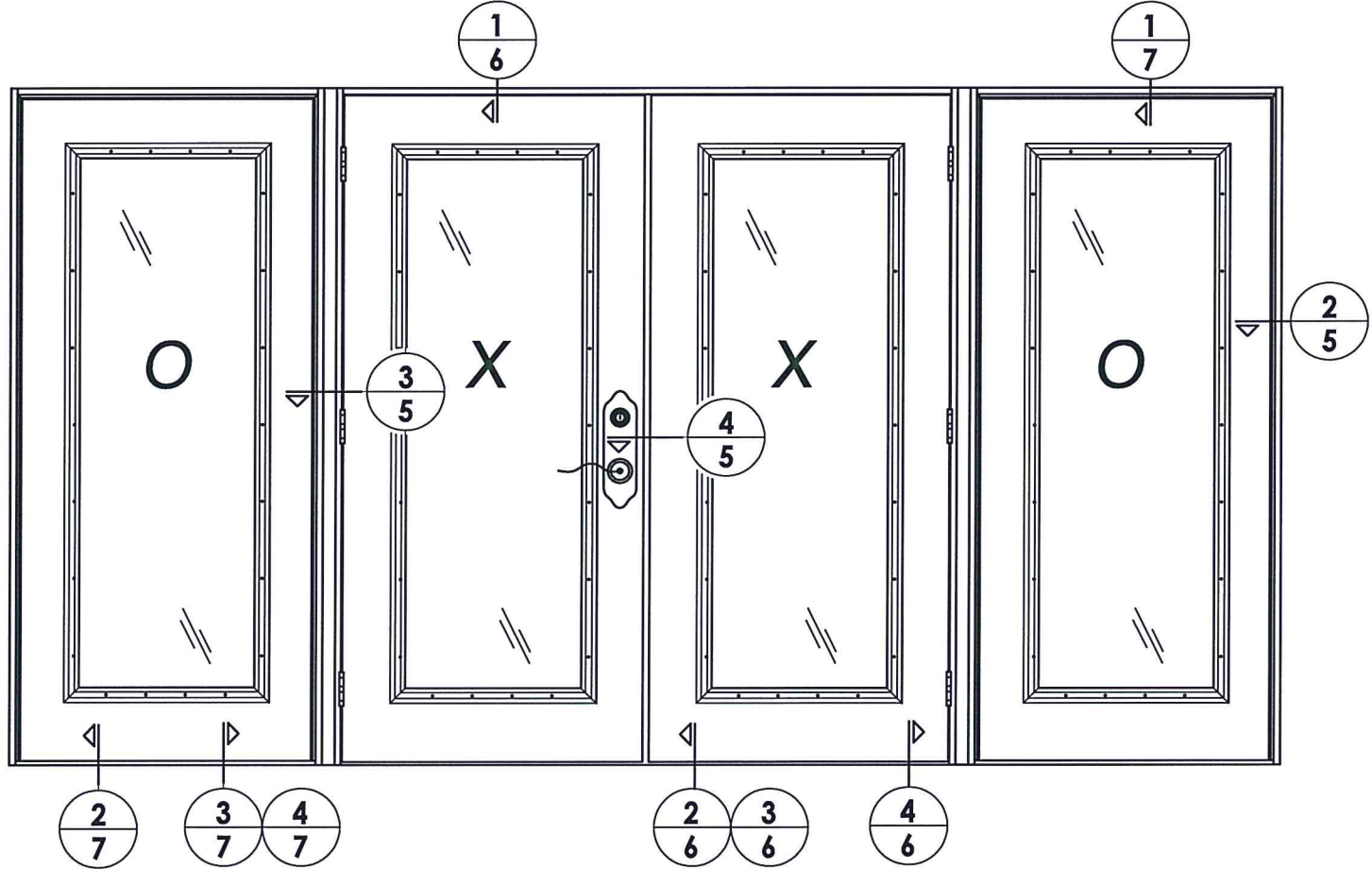


Documents Prepared By: Lyndon F. Schmidt, P.E.
TEXAS P.E. #104123
RW BUILDING CONSULTANTS, INC.
P.O. Box 230 Valrico FL, 33595
Phone No.: 813.659.9197
TEXAS BOARD OF PROFESSIONAL ENGINEERS
CERTIFICATE OF REGISTRATION # F-11852

PRODUCT:		PLASTPRO FIBERGLASS DOOR	
PART OR ASSEMBLY:		SIDELITE PANEL & GLAZING DETAILS	
NO.	DATE	BY	REVISIONS
1	5/21/20	LFS	UPDATE TO 2018 IBC/IRC CODE
DATE: 03/25/10		SCALE: N.T.S.	
DWG. BY: AL		CHK. BY: LFS	
DRAWING NO.: TX-4061		SHEET 3 OF 11	



ELEVATION (XX)



ELEVATION (OXXO)



Documents Prepared By: Lyndon F. Schmidt, P.E.
 TEXAS P.E. #104123

RW BUILDING CONSULTANTS, INC.
 P.O. Box 230 Vairico FL 33595
 Phone No.: 813.659.9197

TEXAS BOARD OF PROFESSIONAL ENGINEERS
 CERTIFICATE OF REGISTRATION # F-11852

PRODUCT: PLASTPRO FIBERGLASS DOOR

PART OR ASSEMBLY: ELEVATIONS

NO.	DATE	REVISIONS	LFS	BY
1	5/21/20	UPDATE TO 2018 IBC/IRC CODE	LFS	BY

DATE: 03/25/10

SCALE: N.T.S.

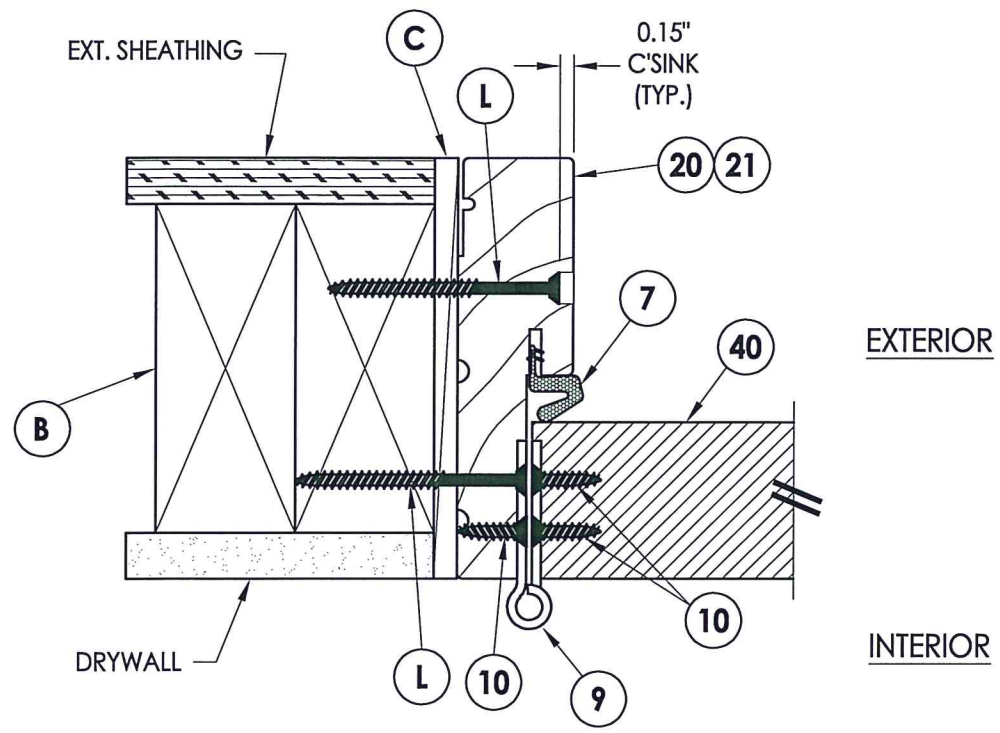
DWG. BY: AL

CHK. BY: LFS

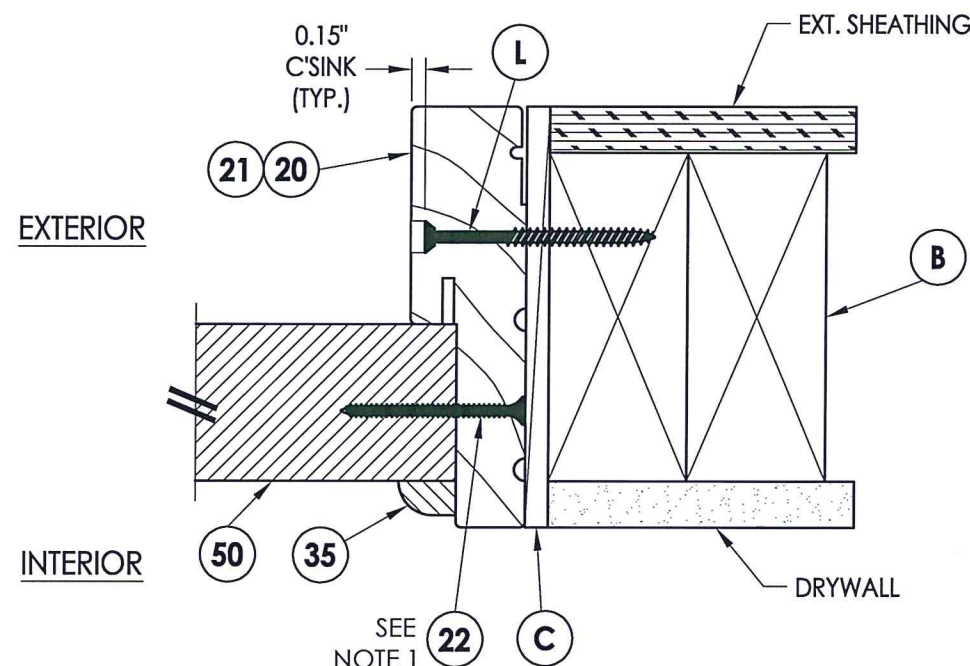
DRAWING NO.: TX-4061

SHEET 4 OF 11

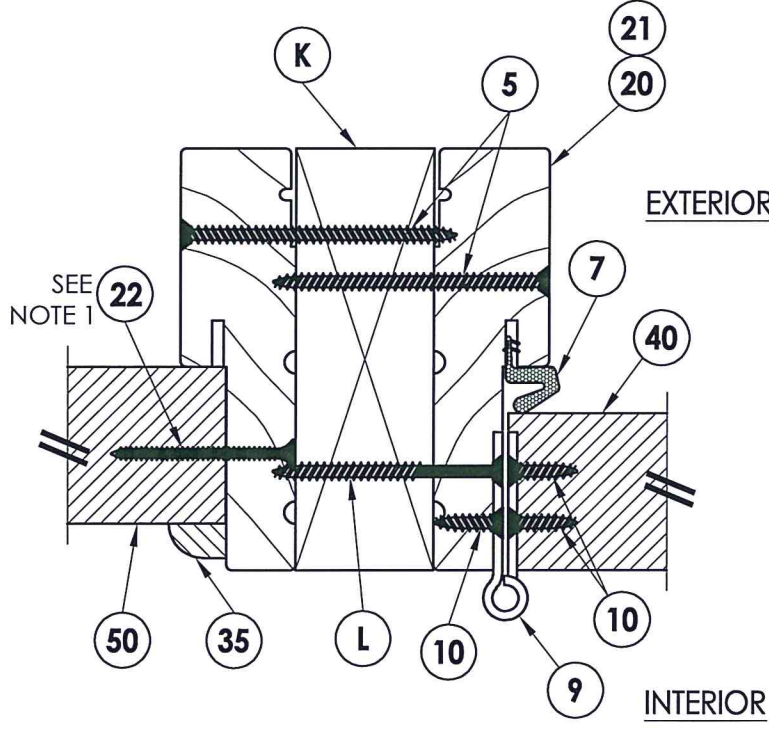
R:\Clients\Plastpro, Inc PERMANENT\B - TD\Hinged Doors - Fiberglass\DR - 441 Glazed Fiberglass (Non-Impact)\C - Drawings\TX-4060-4061.dwg, 2-5



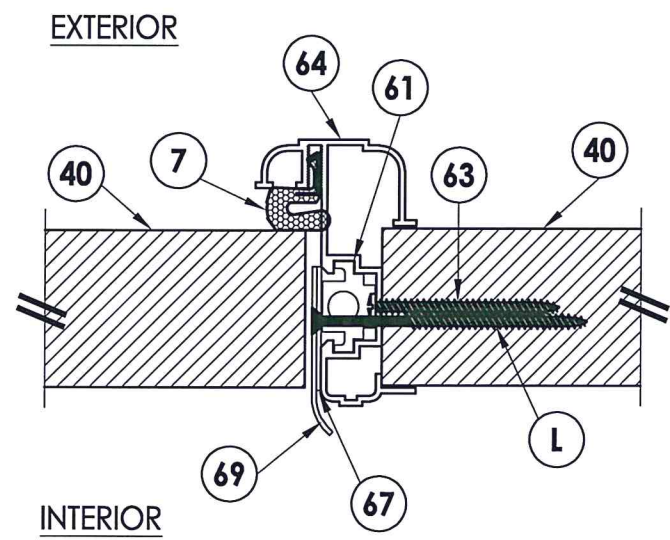
1 HORIZONTAL CROSS SECTION
5 Inswing shown - outswing also approved



2 HORIZONTAL CROSS SECTION
5 Inswing shown - outswing also approved



3 HORIZONTAL CROSS SECTION
5 Inswing shown - outswing also approved



4 HORIZONTAL CROSS SECTION
5 Inswing shown - outswing also approved



S.27.20

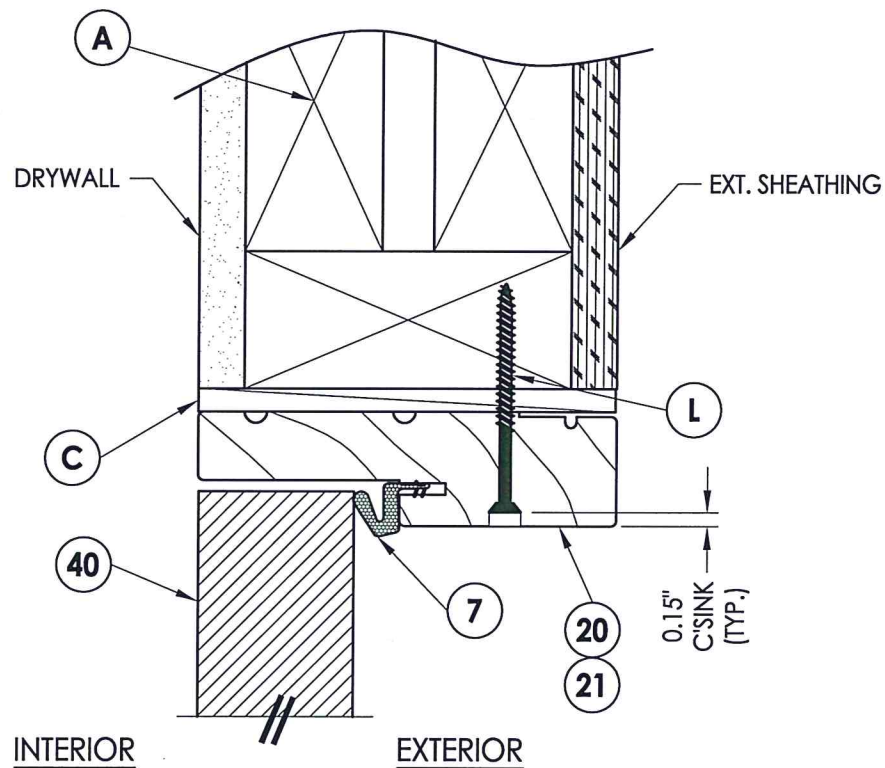
NOTE:
 1. Sidelite screws (item #22) located at 3", 6", 16", 27", 38", 49", 60", 70" and 80" from bottom of panel.

Documents Prepared By: Lyndon F. Schmidt, P.E.
 TEXAS P.E. #104123
RW BUILDING CONSULTANTS, INC.
 P.O. Box 230 Valrico FL, 33595
 Phone No.: 813.659.9197
 TEXAS BOARD OF PROFESSIONAL ENGINEERS
 CERTIFICATE OF REGISTRATION # F-11852

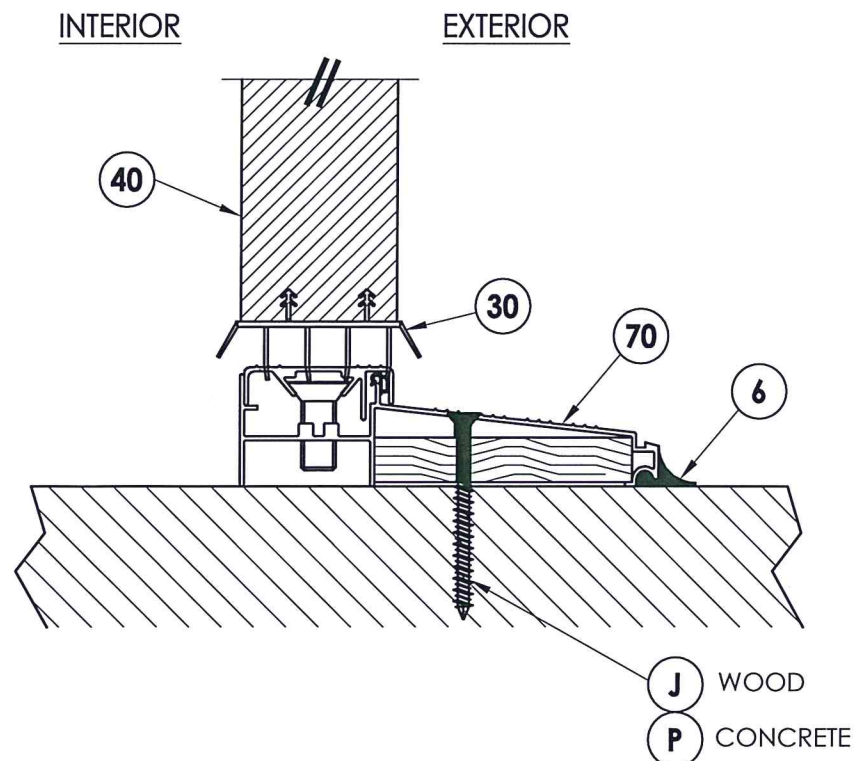
PRODUCT: PLASTPRO FIBERGLASS DOOR
 PART OR ASSEMBLY: HORIZONTAL CROSS SECTIONS

NO.	DATE	DESCRIPTION	BY
1	5/21/20	UPDATE TO 2018 IBC/IRC CODE	LFS

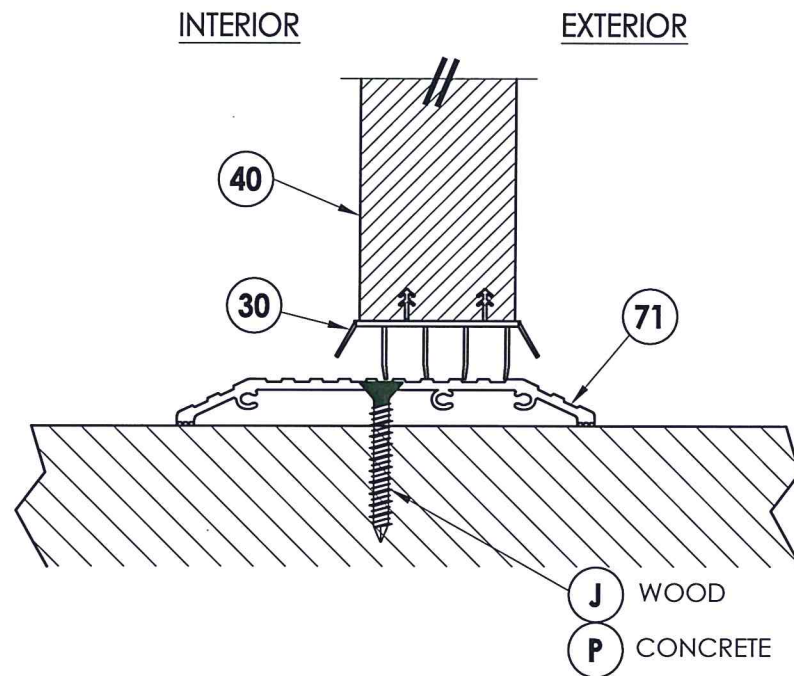
DATE: 03/25/10
 SCALE: N.T.S.
 DWG. BY: AL
 CHK. BY: LFS
 DRAWING NO.: TX-4061
 SHEET 5 OF 11



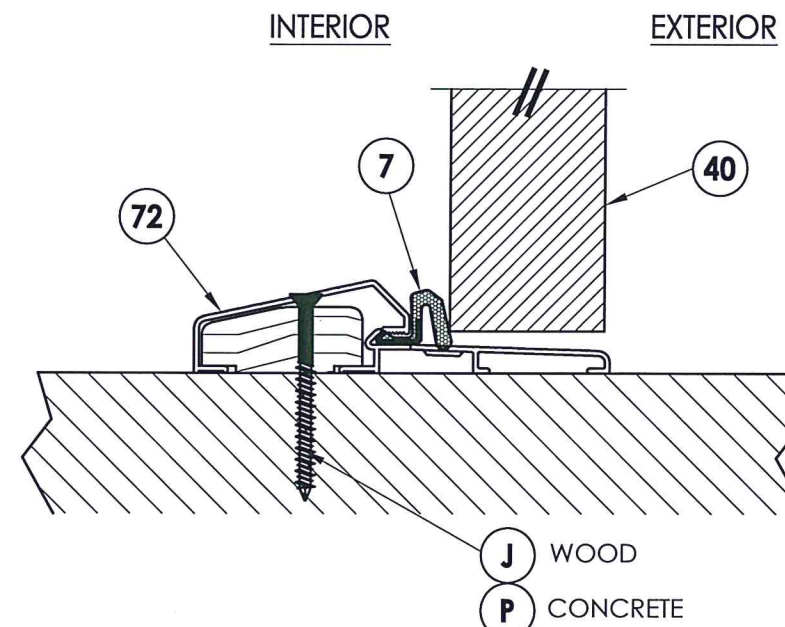
1 VERTICAL CROSS SECTION
6 Inswing shown - outswing also approved



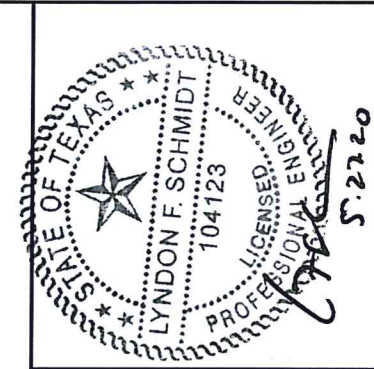
2 VERTICAL CROSS SECTION
6 Inswing configuration



3 VERTICAL CROSS SECTION
6 Shown w/ ADA threshold



4 VERTICAL CROSS SECTION
6 Outswing configuration



Documents Prepared By: Lyndon F. Schmidt, P.E.
 TEXAS P.E. #104123

RW BUILDING CONSULTANTS, INC.
 P.O. Box 230 Valrico FL 33595
 Phone No.: 813.659.9197

TEXAS BOARD OF PROFESSIONAL ENGINEERS
 CERTIFICATE OF REGISTRATION # F-11852

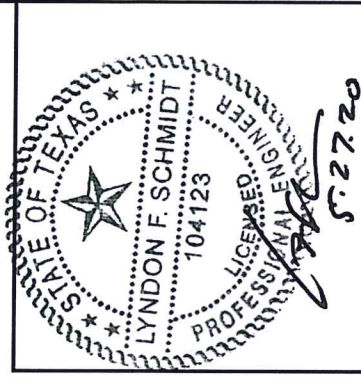
PRODUCT: PLASTPRO FIBERGLASS DOOR

PART OR ASSEMBLY: VERTICAL CROSS SECTIONS

NO.	DATE	DESCRIPTION	BY
1	5/21/20	UPDATE TO 2018 IBC/IRC CODE	LFS

DATE: 03/25/10
 SCALE: N.T.S.
 DWG. BY: AL
 CHK. BY: LFS
 DRAWING NO.: TX-4061
 SHEET 6 OF 11

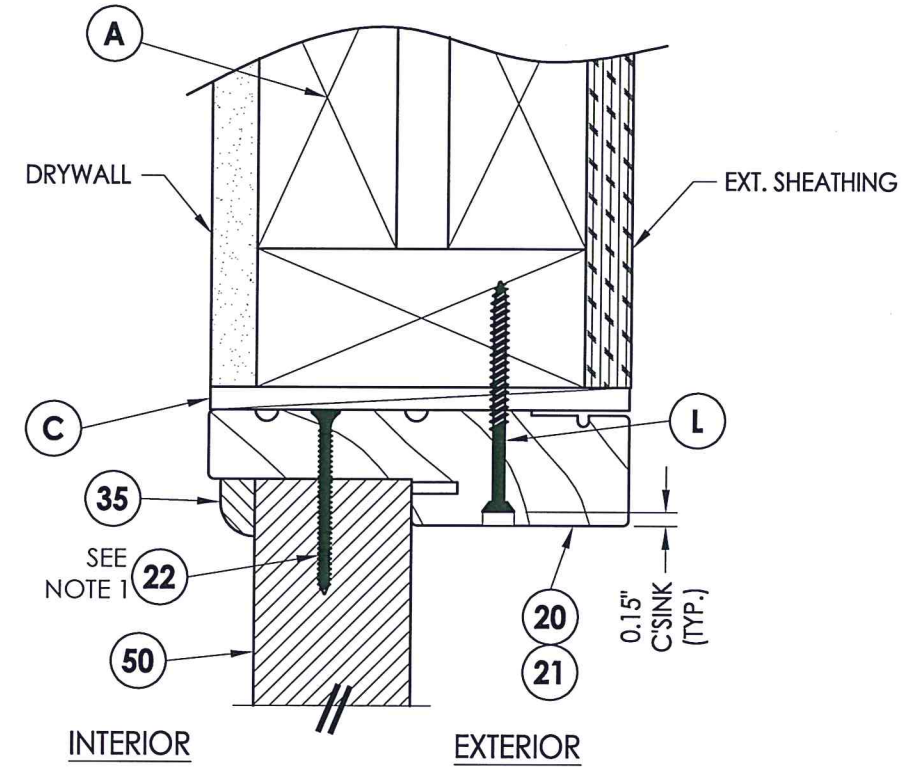
R:\Clients\Plastpro, Inc PERMANENT\B - TDI\Hinged Doors - Fiberglass(DR - 441 Glazed Fiberglass (Non-Impact))\C - Drawings\TX-4060.4061.dwg, 2-7



Documents Prepared By: Lyndon F. Schmidt, P.E.
TEXAS P.E. #104123

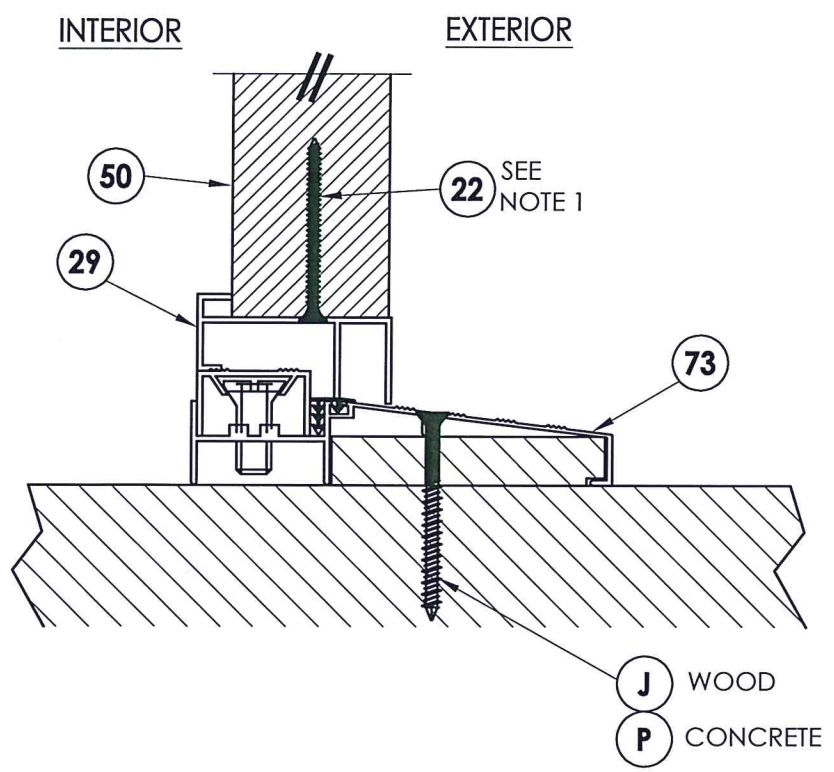
RW BUILDING CONSULTANTS, INC.
P.O. Box 230 Valrico FL 33595
Phone No.: 813.659.9197

TEXAS BOARD OF PROFESSIONAL ENGINEERS
CERTIFICATE OF REGISTRATION # F-11852

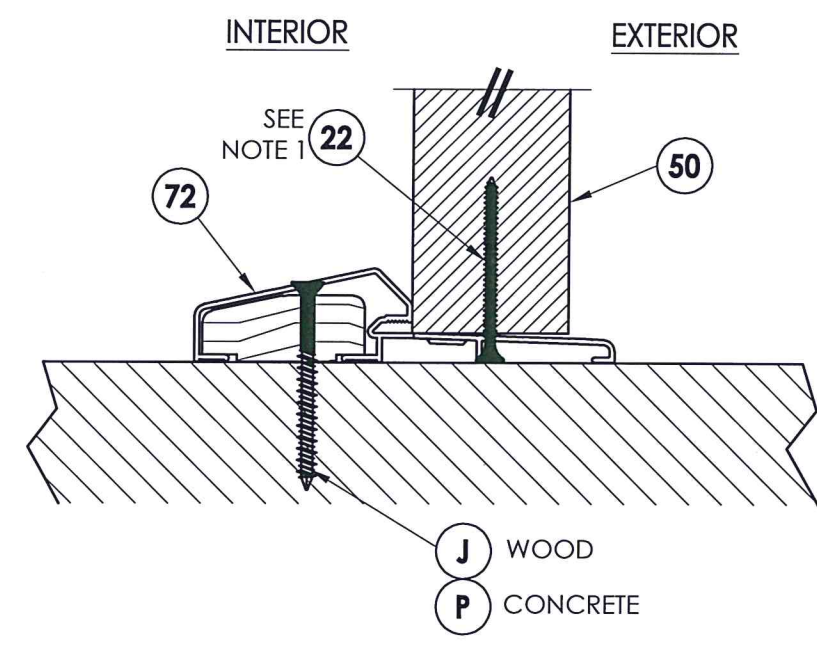


1 VERTICAL CROSS SECTION
7 Inswing shown - outswing also approved

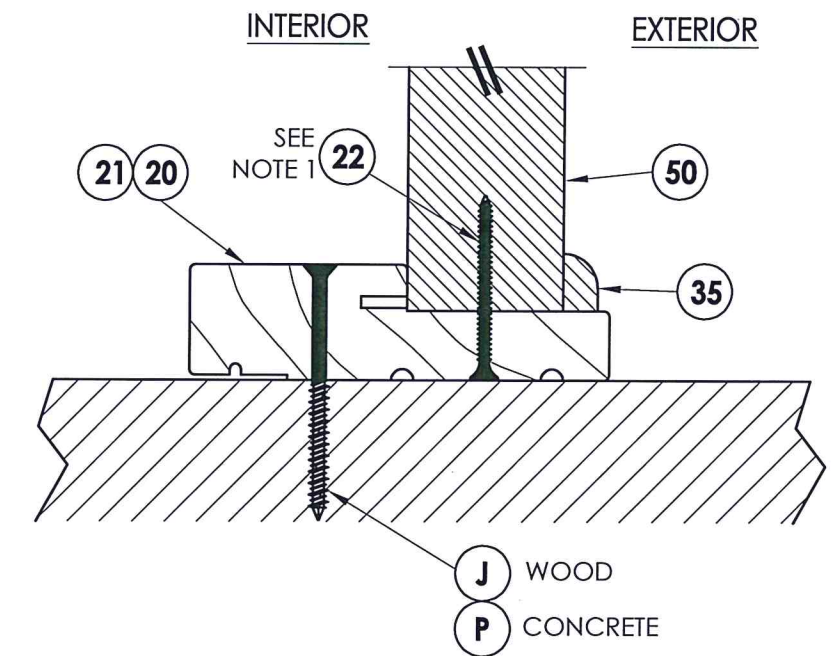
NOTE:
1. Screws thru head and sill jamb located 3" from each end and on center line.



2 VERTICAL CROSS SECTION
7 Inswing configuration



3 VERTICAL CROSS SECTION
7 Outswing configuration



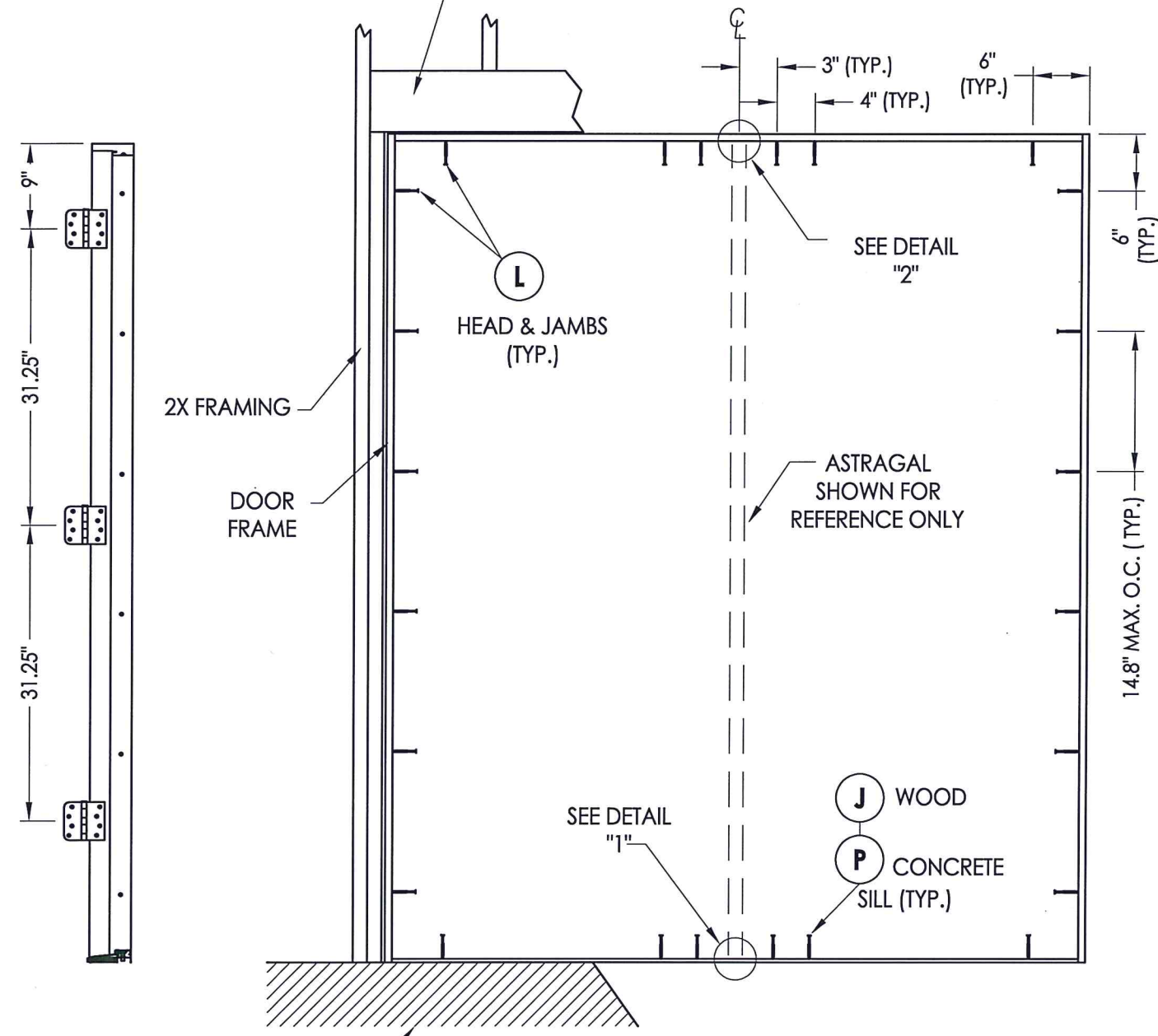
4 VERTICAL CROSS SECTION
7 Outswing configuration

PRODUCT:		PLASTPRO FIBERGLASS DOOR	
PART OR ASSEMBLY:		VERTICAL CROSS SECTIONS	
NO.	DATE	DESCRIPTION	BY
1	5/21/20	UPDATE TO 2018 IBC/IRC CODE	LFS
REVISIONS			
DATE: 03/25/10			
SCALE: N.T.S.			
DWG. BY: AL			
CHK. BY: LFS			
DRAWING NO.: TX-4061			
SHEET 7 OF 11			

© 2010 R.W. BUILDING CONSULTANTS INC.

R:\Clients\Plastpro, Inc PERMANENT\B - TD\Hinged Doors - Fiberglass\DR - 441 Glazed Fiberglass (Non-Impact)\C - Drawings\TX-40604061.dwg, 2-8

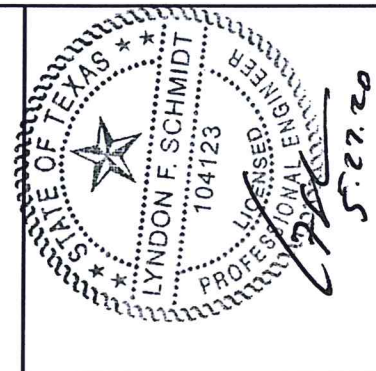
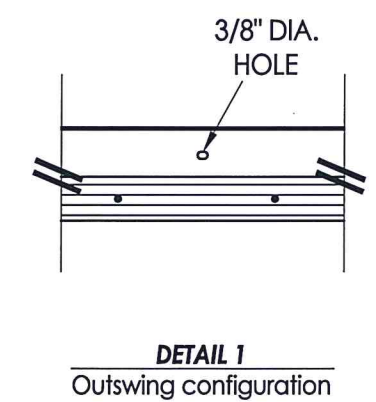
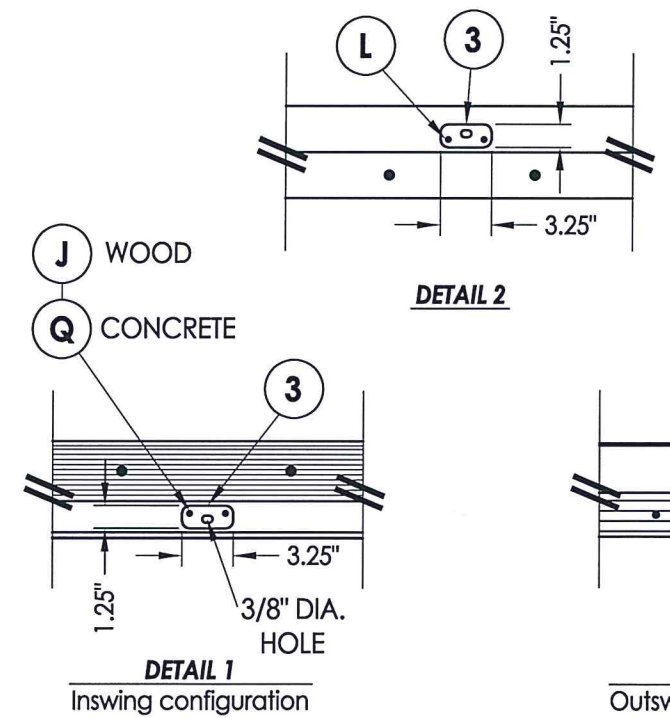
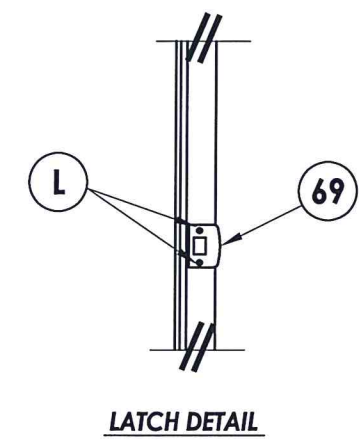
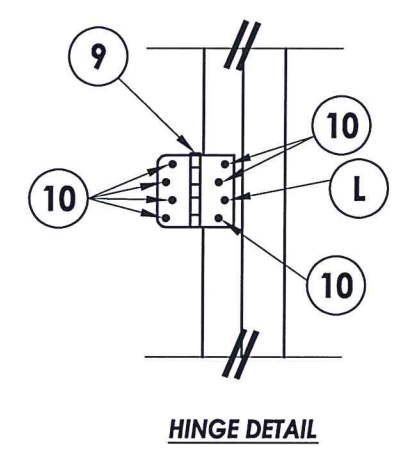
2X FRAMING TO BE DESIGNED BY THE ENGINEER OR ARCHITECT OF RECORD



HINGE JAMB
FLOOR SUBSTRATE MATERIAL
CONCRETE (MIN. 3000 PSI)
WOOD (S.G. >= 0.42)

FRAME ANCHORING
XX

ASTRAGAL



Documents Prepared By: Lyndon F. Schmidt, P.E.
TEXAS P.E. #104123

RW BUILDING CONSULTANTS, INC.
P.O. Box 230 Valrico FL 33595
Phone No.: 813.659.9197

TEXAS BOARD OF PROFESSIONAL ENGINEERS
CERTIFICATE OF REGISTRATION # F-11852

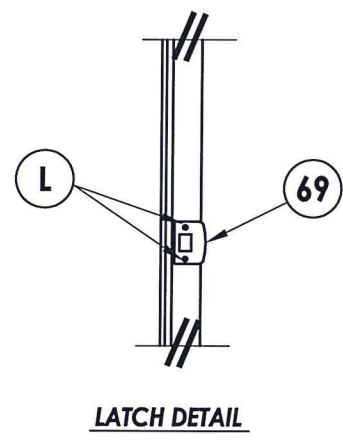
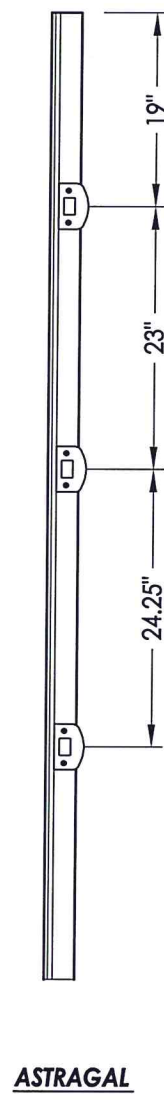
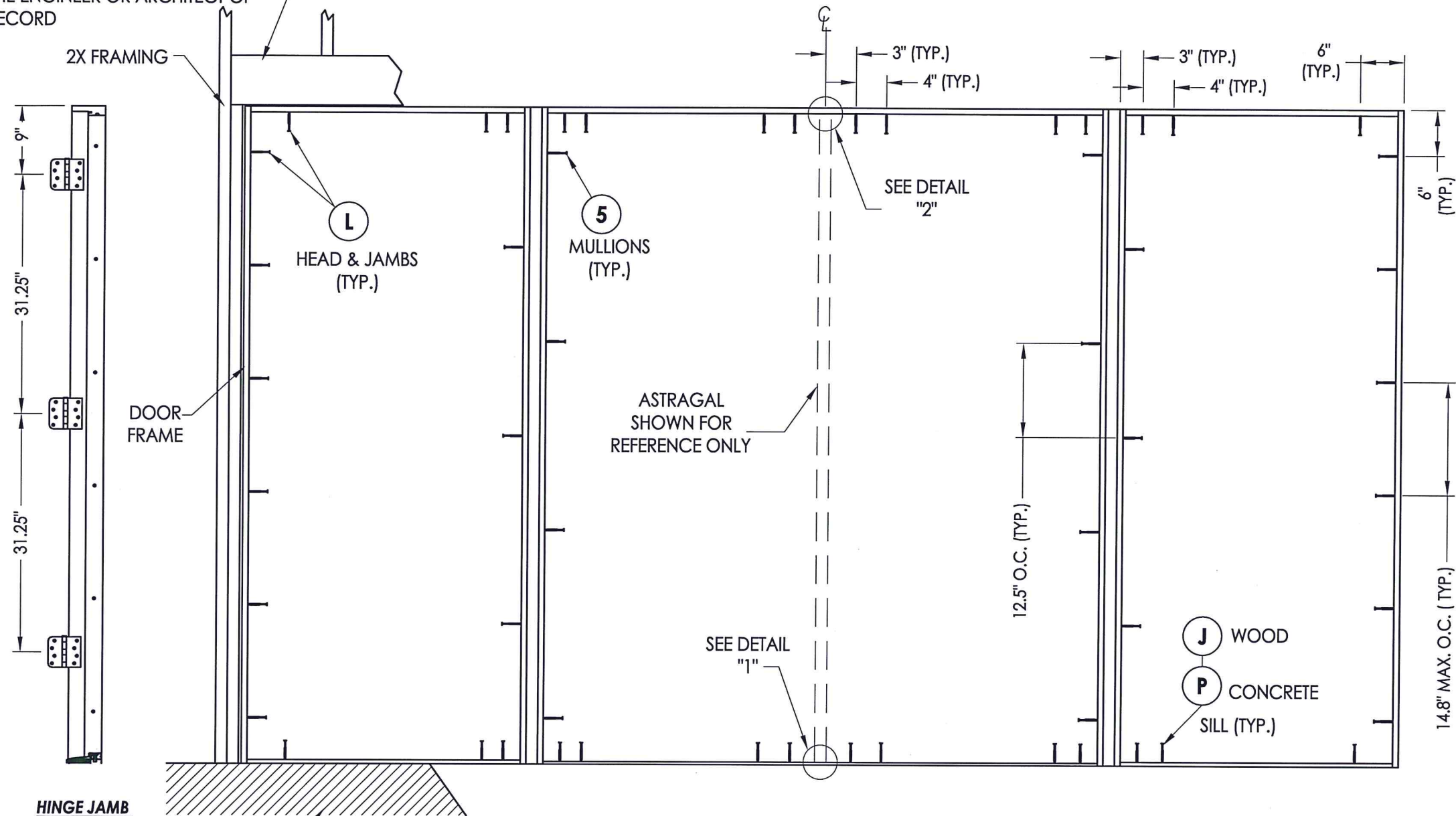
PRODUCT: PLASTPRO FIBERGLASS DOOR

PART OR ASSEMBLY: FRAME ANCHORING

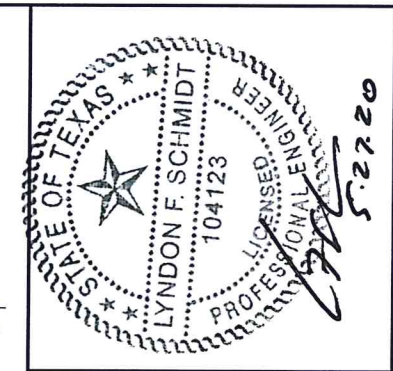
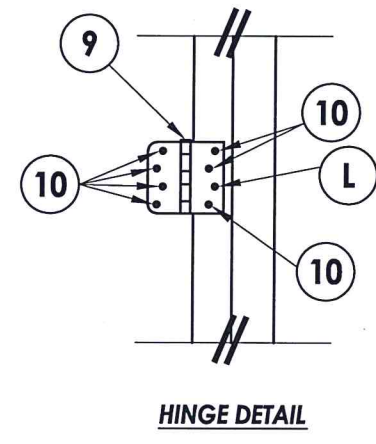
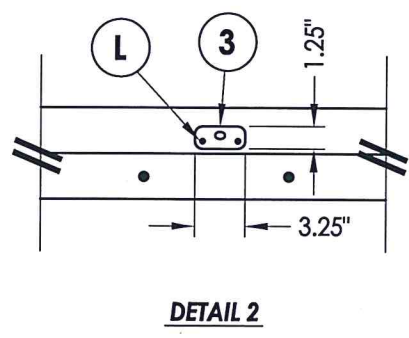
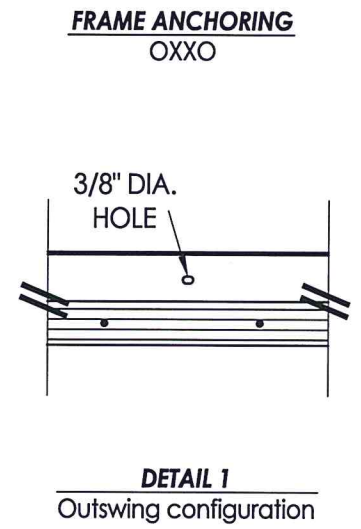
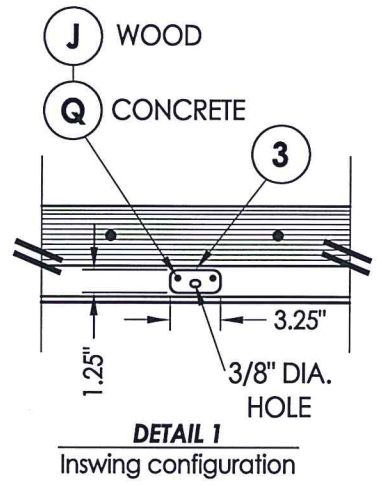
NO.	DATE	REVISIONS
1	5/21/20	UPDATE TO 2018 IBC/IRC CODE
		LFS
		BY

DATE: 03/25/10
SCALE: N.T.S.
DWG. BY: AL
CHK. BY: LFS
DRAWING NO.: TX-4061
SHEET 8 OF 11

2X FRAMING TO BE DESIGNED BY THE ENGINEER OR ARCHITECT OF RECORD



FLOOR SUBSTRATE MATERIAL
CONCRETE (MIN. 3000 PSI)
WOOD (S.G. >= 0.42)

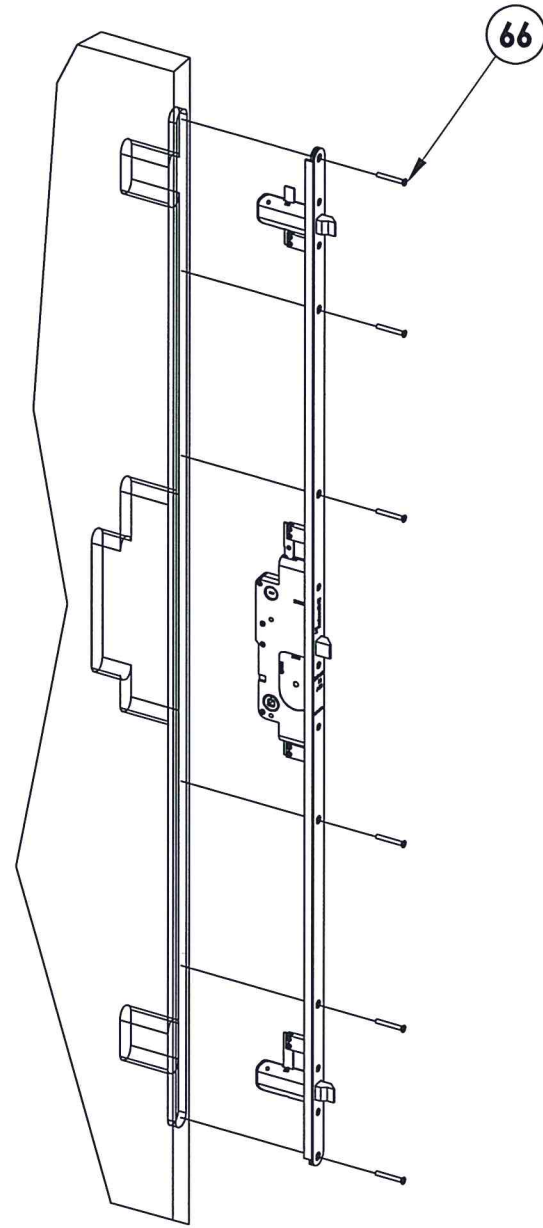


Documents Prepared By: Lyndon F. Schmidt, P.E.
TEXAS P.E. #104123

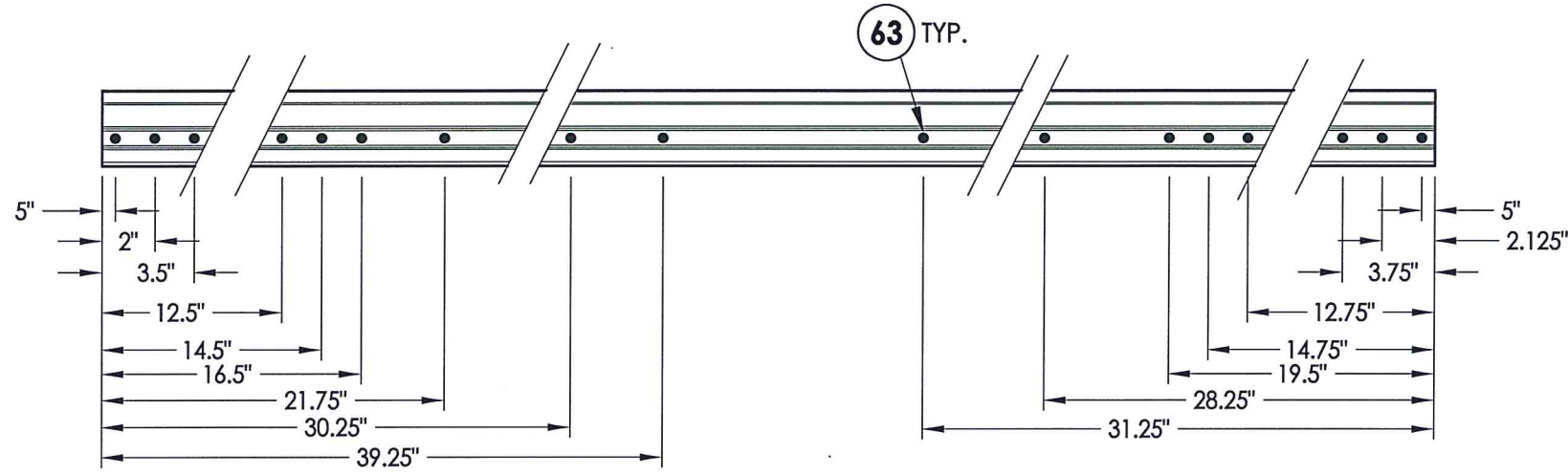
R.W. BUILDING CONSULTANTS, INC.
P.O. Box 230 Valrico FL, 33595
Phone No.: 813.659.9197

TEXAS BOARD OF PROFESSIONAL ENGINEERS
CERTIFICATE OF REGISTRATION # F-11852

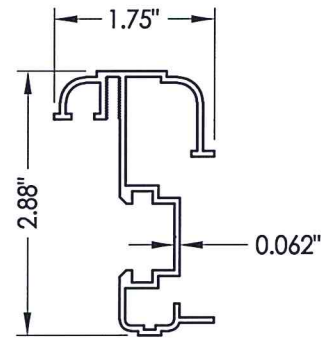
PRODUCT:		PLASTPRO FIBERGLASS DOOR	
PART OR ASSEMBLY:		FRAME ANCHORING	
NO.	DATE	BY	REVISIONS
1	5/21/20	LFS	UPDATE TO 2018 IBC/IRC CODE
DATE: 03/25/10			
SCALE: N.T.S.			
DWG. BY: AL			
CHK. BY: LFS			
DRAWING NO.: TX-4061			
SHEET 9 OF 11			



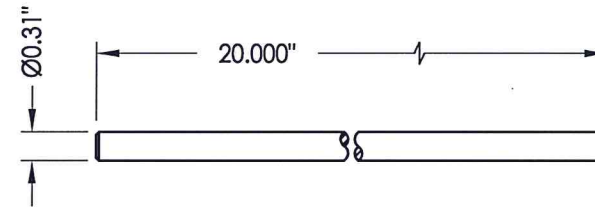
65 MULTI-POINT LOCK
Triennium by Endura



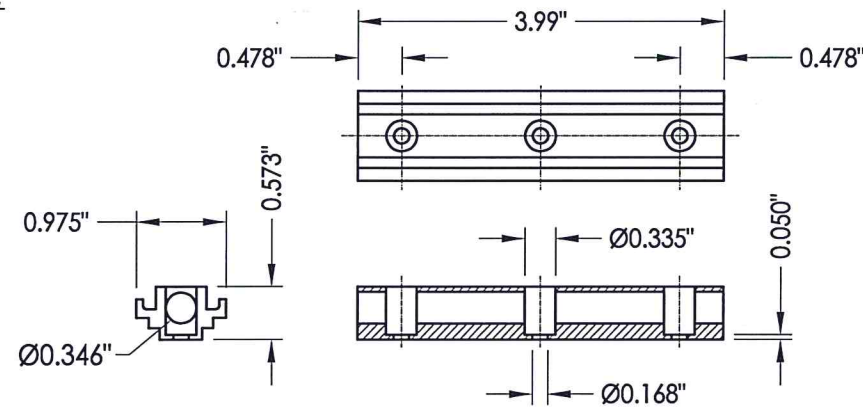
ASTRAGAL SCREW LOCATIONS



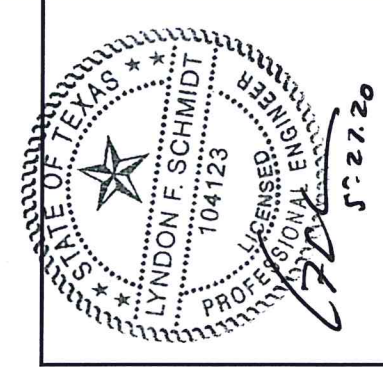
64 ASTRAGAL
By DLP



62 SLIDE BOLT ROD
Typ. top & bottom of astragal
top through 2.0"
bottom through 2.0"



61 CONCEALED STIFFENER



Documents Prepared By: Lyndon F. Schmidt, P.E.
TEXAS P.E. #104123

RW BUILDING CONSULTANTS, INC.
P.O. Box 230 Valrico FL, 33595
Phone No.: 813.659.9197
TEXAS BOARD OF PROFESSIONAL ENGINEERS
CERTIFICATE OF REGISTRATION # F-11852

PRODUCT: PLASTPRO
FIBERGLASS DOOR

PART OR ASSEMBLY:
ASTRAGAL & MULTI-POINT
LOCK DETAILS

NO.	DATE	DESCRIPTION	BY
1	5/21/20	UPDATE TO 2018 IBC/IRC CODE	LFS
REVISIONS			

DATE: 03/25/10

SCALE: N.T.S.

DWG. BY: AL

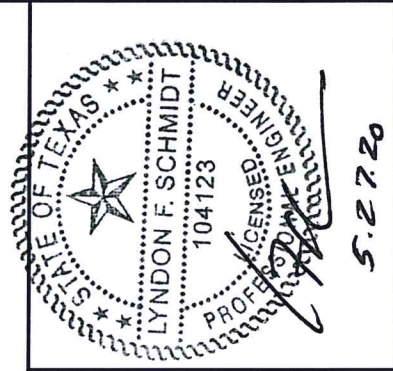
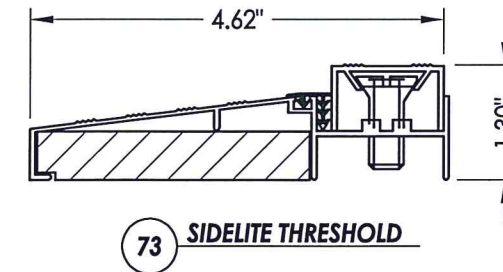
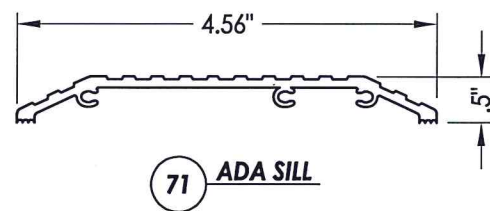
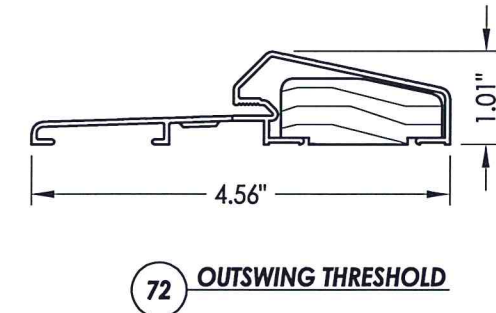
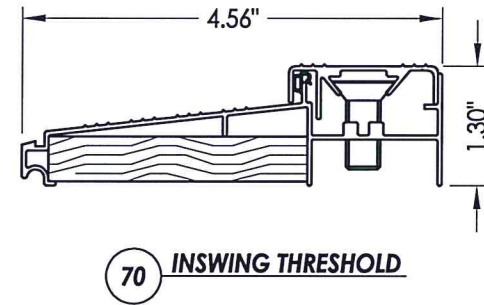
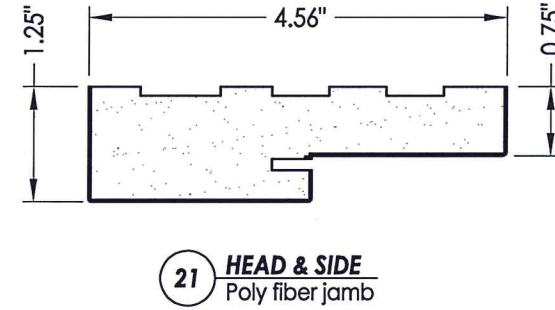
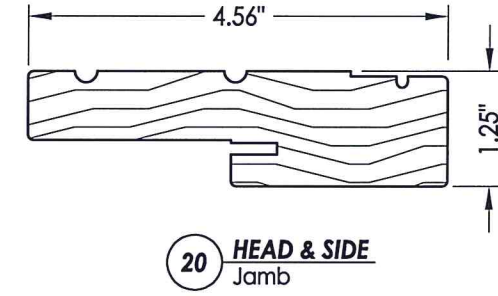
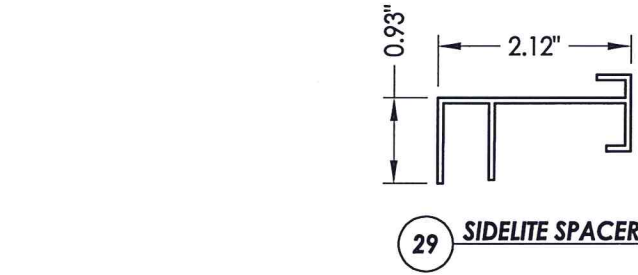
CHK. BY: LFS

DRAWING NO.: TX-4061

SHEET 10 OF 11

BILL OF MATERIALS

ITEM	DESCRIPTION	MATERIAL
A	2X HEADER FRAMING SG >= 0.42	WOOD
B	2X FRAMING SG >= 0.42	WOOD
C	1/4" MAX. SHIM SPACE	-
J	#10 X 3" PFH WOOD SCREW	STEEL
K	2X REINFORCEMENT (CLEAR PINE SG >= 0.42)	WOOD
L	#10 X 2-1/2" PFH WOOD SCREW (1.15" MIN. EMBEDMENT)	STEEL
M	#8 X 2-1/2" PFH WOOD SCREW	STEEL
P	1/4" PFH ELCO OR ITW CONCRETE SCREW (1-3/4" MIN. EMB.)	STEEL
Q	3/16" PFH ITW CONCRETE SCREW (1-3/4" MIN. EMB.)	STEEL
3	ASTRAGAL STRIKE PLATE	STEEL
5	#10 X 3" PFH SCREW	STEEL
6	SEALANT	SILICONE
7	WEATHERSTRIP BY Q-LON	FOAM
9	4" HINGE	STEEL
10	#9 X 3/4" PFH WOOD SCREW	STEEL
20	JAMB FINGER - JOINT - PINE (SG >= 0.42)	WOOD
21	POLY FIBER JAMB	POLY FIBER
22	#7 X 2" PFH DRYWALL SCREW	STEEL
29	SIDELITE SPACER	PVC
30	DOOR SWEEP	ALUM.
35	TRIM	WOOD
40	DOOR PANEL - SEE DOOR PANEL DETAIL SHEET FOR CONSTRUCTION DETAILS	-
50	SIDELITE PANEL - SEE SIDELITE PANEL DETAIL SHEET FOR CONSTRUCTION DETAILS	-
61	CONCEALED STIFFENER 6063-T6 BY PLASTPRO	ALUMINUM
62	SLIDE BOLT ROD	STEEL
63	#8 X 2" PPH SMS	STEEL
64	ASTRAGAL 6063-T5 ALUMINUM BY DLP	ALUMINUM
65	MULTI-POINT LOCK ASSEMBLY TRILENNIUM BY ENDURA	-
66	#10 X 1-1/2" PFH SCREW	STEEL
67	BACKING PLATE	STEEL
69	MULTI-POINT STRIKE PLATE	STEEL
70	INSWING THRESHOLD BY DLP	ALUM. / WOOD
71	ADA THRESHOLD BY DLP	ALUM.
72	OUTSWING THRESHOLD BY DLP	ALUM. / WOOD
73	SIDELITE THRESHOLD BY DLP	ALUM. / WOOD



Documents Prepared By: Lyndon F. Schmidt, P.E.
TEXAS P.E. #104123

RW BUILDING CONSULTANTS, INC.
P.O. Box 230 Valrico FL 33595
Phone No.: 813.659.9197

TEXAS BOARD OF PROFESSIONAL ENGINEERS
CERTIFICATE OF REGISTRATION # F-11852

PRODUCT: PLASTPRO FIBERGLASS DOOR

PART OR ASSEMBLY: BILL OF MATERIALS & COMPONENTS

NO.	DATE	DESCRIPTION	LFS	BY
1	5/21/20	UPDATE TO 2018 IBC/IRC CODE		

DATE: 03/25/10

SCALE: N.T.S.

DWG. BY: AL

CHK. BY: LFS

DRAWING NO.: TX-4061

SHEET 11 OF 11

CONCRETE ANCHOR NOTES:

- Substitution of equal concrete anchors from a different supplier may have different edge distance and center distance requirements.
- Concrete anchor locations at the corners may be adjusted to maintain the min. edge distance to mortar joints. If concrete anchor locations noted as "MAX. ON CENTER" must be adjusted to maintain the min. edge distance to mortar joints, additional concrete anchors may be required to ensure the "MAX. ON CENTER" dimensions are not exceeded.
- Concrete anchor table:

ANCHOR TYPE	ANCHOR SIZE	MIN. EMBEDMENT	MIN. CLEARANCE TO MASONRY EDGE	MIN. CLEARANCE TO ADJACENT ANCHOR
ITW	3/16"	1-3/4"	2-5/8"	2-1/4"
	1/4"	1-3/4"	2-1/2"	3"
ELCO	1/4"	1-3/4"	1"	4"

R:\Clients\Plastpro, Inc PERMANENT B - TD\Hinged Doors - Fiberlass (Non-Impact)\C - Drawings\TX-4061.dwg, 2-11

© 2010 R.W. BUILDING CONSULTANTS INC.