

7/29/2020 10:15 AM
c:\users\ycruz\onedrive - building drops - incl\tdi-20-0704 - tdi submittal - win-1654, dr-387 and win-1175 (revision)\dwgs\atrium\atri058.dwg



ATRIUM CORPORATION
9001 AMBASSADOR ROW
DALLAS, TX 75247
PH: (214) 637-2696 FAX: (214) 424-6734

ATRIUM COMPANIES, INC.

332/388 SLIDING GLASS DOOR (NON-IMPACT)

INSTALLATION NOTES:

1. ONE (1) INSTALLATION ANCHORS ARE REQUIRED AT EACH ANCHOR LOCATION SHOWN.
2. THE NUMBER OF INSTALLATION ANCHORS DEPICTED IS THE MINIMUM NUMBER OF ANCHORS TO BE USED FOR PRODUCT INSTALLATION.
3. INSTALL INDIVIDUAL INSTALLATION ANCHORS WITHIN A TOLERANCE OF ±1/2 INCH OF THE DEPICTED LOCATION IN THE ANCHOR LAYOUT DETAIL (I.E., WITHOUT CONSIDERATION OF TOLERANCES). TOLERANCES ARE NOT CUMULATIVE FROM ONE INSTALLATION ANCHOR TO THE NEXT.
4. SHIM AS REQUIRED AT EACH INSTALLATION ANCHOR WITH LOAD BEARING SHIM(S). MAXIMUM ALLOWABLE SHIM STACK TO BE 1/4 INCH. SHIM WHERE SPACE OF 1/16 INCH OR GREATER OCCURS. SHIM(S) SHALL BE CONSTRUCTED OF HIGH DENSITY PLASTIC OR BETTER.
5. THROUGH FIN: FOR INSTALLATION INTO WOOD FRAMING USE #8 WOOD SCREWS OF SUFFICIENT LENGTH TO ACHIEVE 1 1/2 INCH MINIMUM EMBEDMENT INTO WOOD SUBSTRATE.
6. THROUGH FRAME: FOR INSTALLATION INTO WOOD FRAMING USE #10 WOOD SCREWS OF SUFFICIENT LENGTH TO ACHIEVE 1 1/2 INCH MINIMUM EMBEDMENT INTO WOOD SUBSTRATE.
7. THROUGH FRAME: FOR INSTALLATION THROUGH 1X BUCK TO CONCRETE/MASONRY, OR DIRECTLY INTO CONCRETE/MASONRY, USE 3/16 INCH DIAMETER ITW TAPCON OF SUFFICIENT LENGTH TO ACHIEVE 1 1/4 INCH MINIMUM EMBEDMENT.
8. MINIMUM EMBEDMENT AND EDGE DISTANCE EXCLUDE WALL FINISHES, INCLUDING BUT NOT LIMITED TO STUCCO, FOAM, BRICK VENEER, AND SIDING.
9. INSTALLATION ANCHORS AND ASSOCIATED HARDWARE MUST BE MADE OF CORROSION RESISTANT MATERIAL OR HAVE A CORROSION RESISTANT COATING.
10. FOR HOLLOW BLOCK AND GROUT FILLED BLOCK, DO NOT INSTALL INSTALLATION ANCHORS INTO MORTAR JOINTS. EDGE DISTANCE IS MEASURED FROM FREE EDGE OF BLOCK OR EDGE OF MORTAR JOINT INTO FACE SHELL OF BLOCK.
11. INSTALLATION ANCHORS SHALL BE INSTALLED IN ACCORDANCE WITH ANCHOR MANUFACTURER'S INSTALLATION INSTRUCTIONS, AND ANCHORS SHALL NOT BE USED IN SUBSTRATES WITH STRENGTHS LESS THAN THE MINIMUM STRENGTH SPECIFIED BY THE ANCHOR MANUFACTURER.
12. INSTALLATION ANCHOR CAPACITIES FOR PRODUCTS HEREIN ARE BASED ON SUBSTRATE MATERIALS WITH THE FOLLOWING PROPERTIES:
 - A. WOOD - MINIMUM SPECIFIC GRAVITY OF 0.42.
 - B. CONCRETE - MINIMUM COMPRESSIVE STRENGTH OF 3000 PSI.
 - C. MASONRY - STRENGTH CONFORMANCE TO ASTM C-90.

GENERAL NOTES:

1. THE PRODUCT SHOWN HEREIN IS DESIGNED AND MANUFACTURED TO COMPLY WITH THE 2018 INTERNATIONAL BUILDING CODE AND THE 2018 INTERNATIONAL RESIDENTIAL CODE AND HAS BEEN EVALUATED ACCORDING TO THE FOLLOWING:
 - AAMA/WDMA/CSA 101/I.S.2/A440-17
2. ADEQUACY OF THE EXISTING STRUCTURAL CONCRETE/MASONRY AND 2X FRAMING AS A MAIN WIND FORCE RESISTING SYSTEM CAPABLE OF WITHSTANDING AND TRANSFERRING APPLIED PRODUCT LOADS TO THE FOUNDATION IS THE RESPONSIBILITY OF THE ENGINEER OR ARCHITECT OF RECORD FOR THE PROJECT OF INSTALLATION.
3. 1X AND 2X BUCKS (WHEN USED) SHALL BE DESIGNED AND ANCHORED TO PROPERLY TRANSFER ALL LOADS TO THE STRUCTURE. BUCK DESIGN AND INSTALLATION IS THE RESPONSIBILITY OF THE ENGINEER OR ARCHITECT OF RECORD FOR THE PROJECT OF INSTALLATION.
4. THE INSTALLATION DETAILS DESCRIBED HEREIN ARE GENERIC AND MAY NOT REFLECT ACTUAL CONDITIONS FOR A SPECIFIC SITE. IF SITE CONDITIONS CAUSE INSTALLATION TO DEVIATE FROM THE REQUIREMENTS DETAILED HEREIN, A LICENSED ENGINEER OR ARCHITECT SHALL PREPARE SITE SPECIFIC DOCUMENTS FOR USE WITH THIS DOCUMENT.
5. APPROVED IMPACT PROTECTIVE SYSTEM **IS REQUIRED** ON THIS PRODUCT IN AREAS REQUIRING IMPACT RESISTANCE.
6. DOOR FRAME MATERIAL: VINYL/PVC
7. GLASS MEETS THE REQUIREMENTS OF ASTM E 1300GLASS CHARTS. SEE SHEET 4 FOR GLAZING DETAIL.
8. DESIGNATIONS "X" AND "O" STAND FOR THE FOLLOWING:
 - X: OPERABLE PANEL
 - O: FIXED PANEL
9. APPROVED CONFIGURATION:
 - 2 TRACK: OX, XO

TABLE OF CONTENTS		
SHEET	REVISION	SHEET DESCRIPTION
1	A	INSTALLATION & GENERAL NOTES
2	A	ELEVATIONS & ANCHOR LAYOUTS
3	A	ELEVATIONS & ANCHOR LAYOUTS
4	A	ELEVATIONS & ANCHOR LAYOUTS
5	A	VERTICAL SECTIONS & GLAZING DETAIL
6	A	HORIZONTAL SECTIONS

DESIGN PRESSURE RATING		
SIZE	DESIGN PRESSURE	MISSILE IMPACT RATING
72" X 95.5" *	+40.0 / -40.0 PSF	NON-IMPACT
70.75" X 95.5"	+50.0 / -50.0 PSF	
72" X 81.5" *	+50.0 / -50.0 PSF	
94.75" X 79.5"	+50.0 / -50.0 PSF	

*UNIT USES ALUMINUM REINFORCEMENTS, ALL OTHERS USE STEEL

TITLE: SERIES 332/388 SLIDING GLASS DOOR

INSTALLATION & GENERAL NOTES

PREPARED BY: BUILDING DROPS, INC.
398 E. DANIA BEACH BLVD., STE. 338
DANIA BEACH, FL 33004
PH: (954) 399-8478
FAX: (954) 744-4738
WEB: www.buildingdrops.com

REMARKS	BY	DATE
TESTING UPDATE	SM	07/14
CODE CHANGE	YC	07/20

THE INSTALLATION DETAILS DESCRIBED HEREIN ARE GENERIC AND MAY NOT REFLECT ACTUAL CONDITIONS FOR A SPECIFIC SITE. IF SITE CONDITIONS CAUSE INSTALLATION TO DEVIATE FROM THE REQUIREMENTS DETAILED HEREIN, A LICENSED ENGINEER OR ARCHITECT SHALL PREPARE SITE SPECIFIC DOCUMENTS FOR USE WITH THIS DOCUMENT.



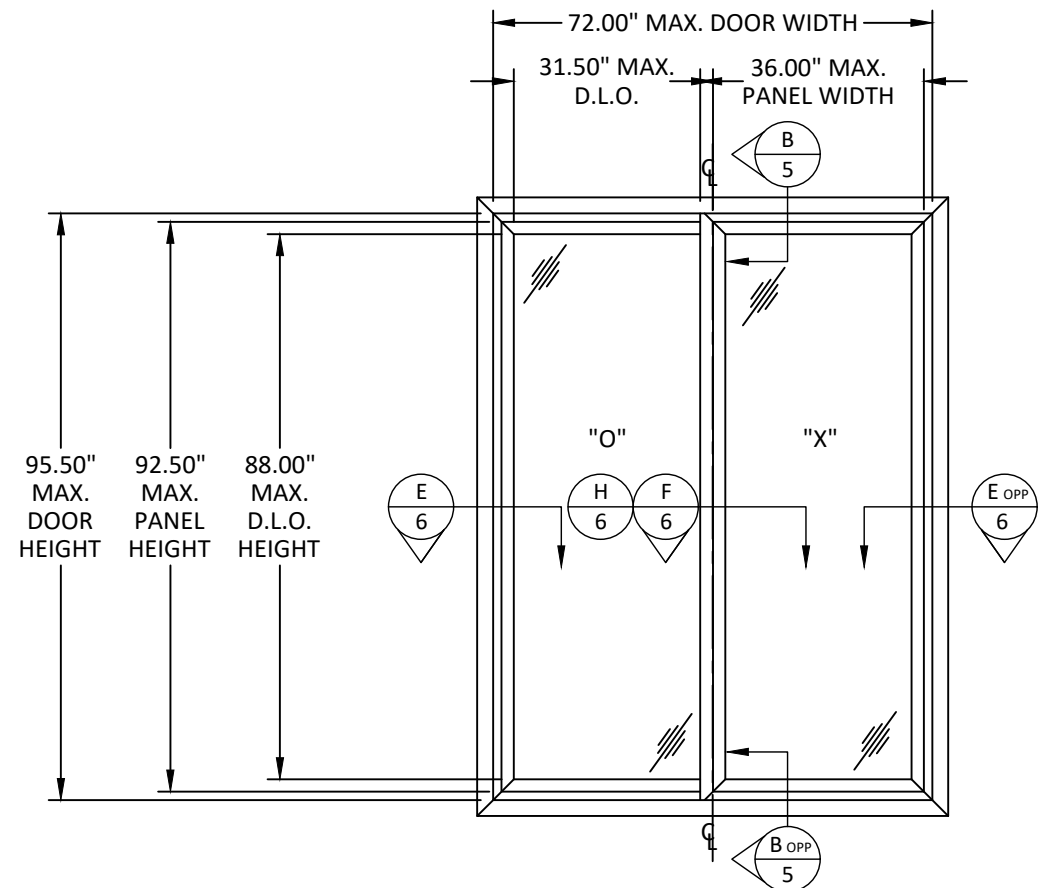
HERMES F. NORERO, P.E.
TEXAS P.E. No 113471
BUILDING DROPS, INC
398 E. DANIA BEACH BLVD. # 338
DANIA BEACH, FL 33004
TBPE CERT. OF AUTHORIZATION NO. 13734

DATE: 07.20.2020	
DWG. BY: SM	CHK. BY: HFN
SCALE: NTS	
DWG. #: ATR058	

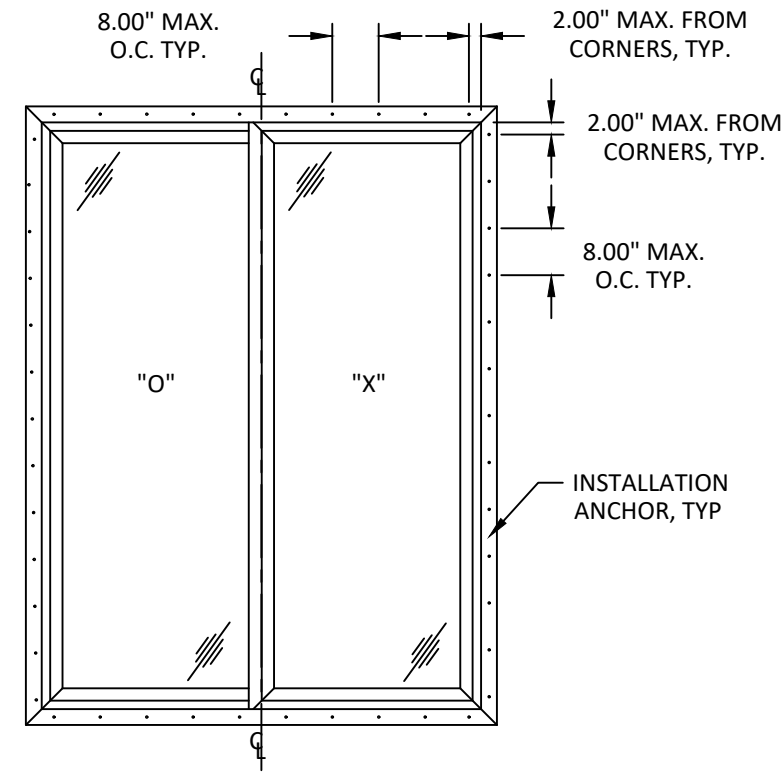
SECTION: 1

OF 6

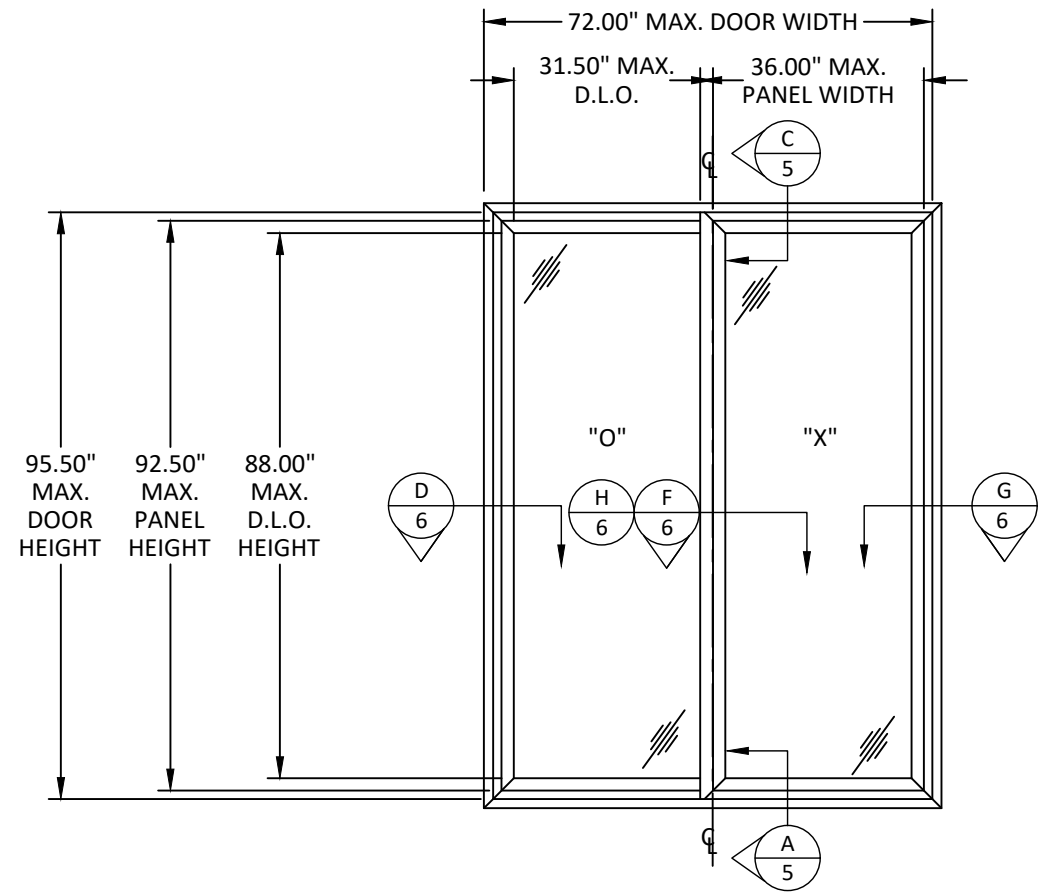
c:\users\ycruz\onedrive - building drops - win-1654, dr-387 and win-1175 (revision)\dwg\atr058\atr058.dwg 7/29/2020 10:15 AM



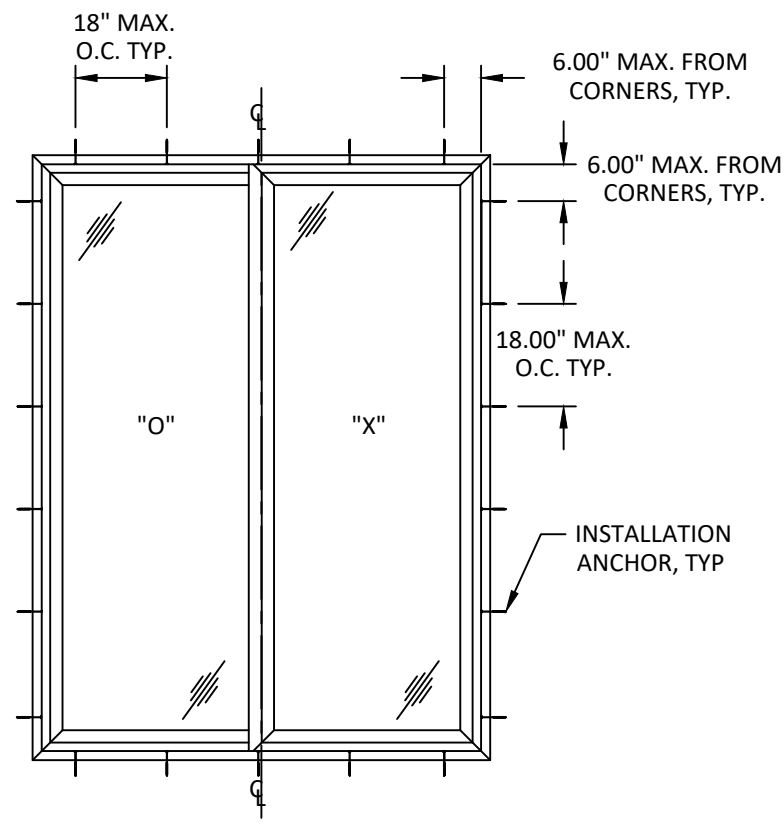
ELEVATION
EXTERIOR VIEW - FIN INSTALLATION



ANCHOR LAYOUT
FIN INSTALLATION



ELEVATION
EXTERIOR VIEW - FINLESS INSTALLATION



ANCHOR LAYOUT
FINLESS INSTALLATION



ATRIUM CORPORATION
9001 AMBASSADOR ROW
DALLAS, TX 75247
PH: (214) 637-2696 FAX: (214) 424-6734

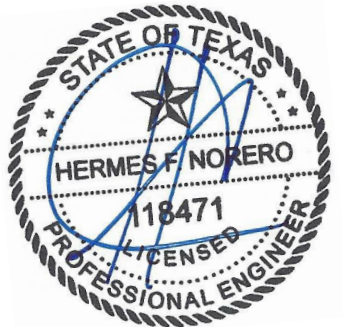
TITLE: **SERIES 332/388**
SLIDING GLASS DOOR
ELEVATIONS AND
ANCHOR LAYOUT

PREPARED BY:
BUILDING DROPS, INC.
398 E. DANIA BEACH BLVD., STE. 338
DANIA BEACH, FL 33004
PH: (954) 399-8478
FAX: (954) 744-4738
WEB: www.buildingdrops.com



REMARKS	BY	DATE
TESTING UPDATE	SM	07/14
CODE CHANGE	YC	07/20

THE INSTALLATION DETAILS DESCRIBED HEREIN ARE GENERIC AND MAY NOT REFLECT ACTUAL CONDITIONS FOR A SPECIFIC SITE. IF SITE CONDITIONS CAUSE INSTALLATION TO DEVIATE FROM THE REQUIREMENTS DETAILED HEREIN, A LICENSED ENGINEER OR ARCHITECT SHALL PREPARE SITE SPECIFIC DOCUMENTS FOR USE WITH THIS DOCUMENT.



HERMES F. NORERO, P.E.
TEXAS P.E. No 113471
BUILDING DROPS, INC
398 E. DANIA BEACH BLVD. # 338
DANIA BEACH, FL 33004
TBPE CERT. OF AUTHORIZATION NO. 13734

DATE:	07.20.2020	
DWG. BY:	SM	CHK. BY: HFN
SCALE:	NTS	
DWG. #:	ATR058	

SECTION:
2
OF 6

TITLE: **SERIES 332/388
SLIDING GLASS DOOR**

ELEVATIONS AND
ANCHOR LAYOUT

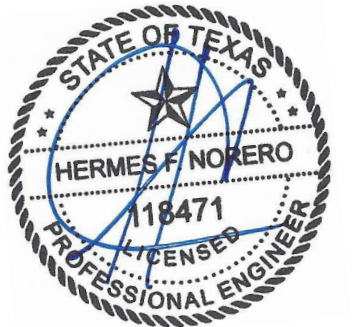
PREPARED BY: **BUILDING DROPS, INC.**

398 E. DANIA BEACH BLVD., STE. 338
DANIA BEACH, FL 33004
PH: (954) 359-8478
FAX: (954) 744-4738
WEB: www.buildingdrops.com



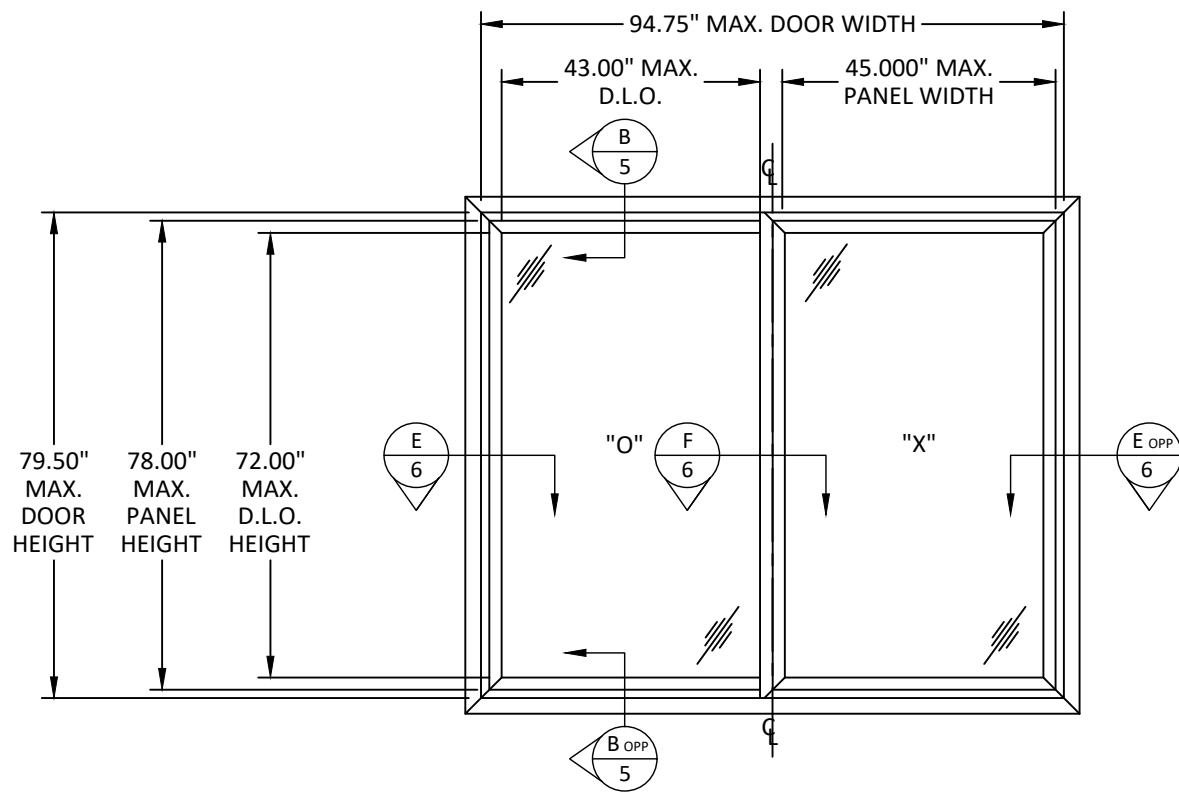
REMARKS	BY	DATE
TESTING UPDATE	SM	07/14
CODE CHANGE	YC	07/20

THE INSTALLATION DETAILS DESCRIBED HEREIN ARE GENERIC AND MAY NOT REFLECT ACTUAL CONDITIONS FOR A SPECIFIC SITE. IF SITE CONDITIONS CAUSE INSTALLATION TO DEVIATE FROM THE REQUIREMENTS DETAILED HEREIN, A LICENSED ENGINEER OR ARCHITECT SHALL PREPARE SITE SPECIFIC DOCUMENTS FOR USE WITH THIS DOCUMENT.

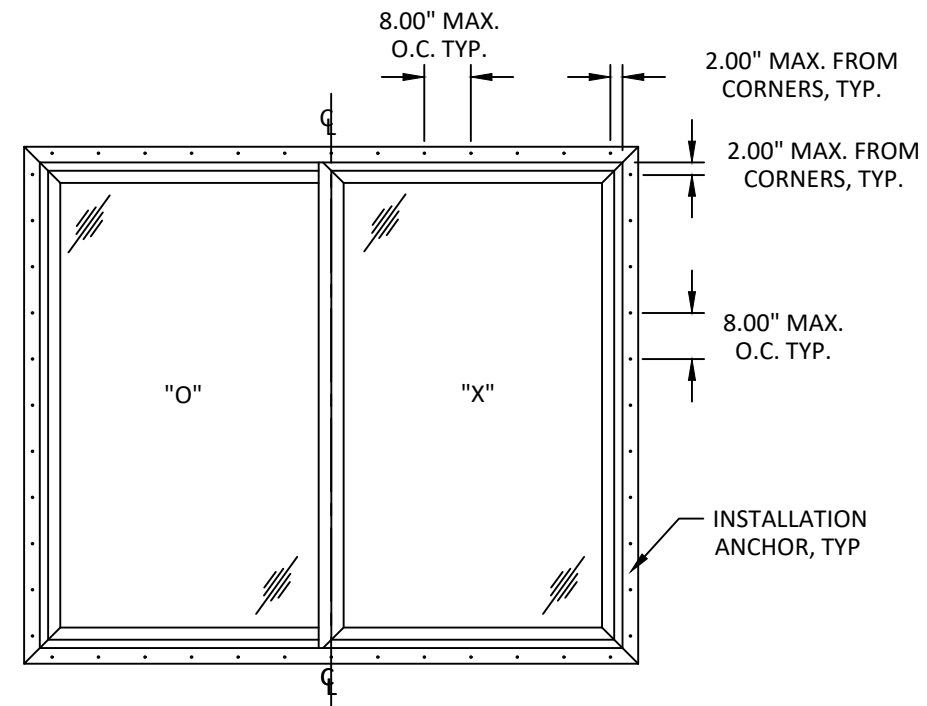


HERMES F. NORERO, P.E.
TEXAS P.E. No 113471
BUILDING DROPS, INC
398 E. DANIA BEACH BLVD. # 338
DANIA BEACH, FL 33004
TBPE CERT. OF AUTHORIZATION NO. 13734

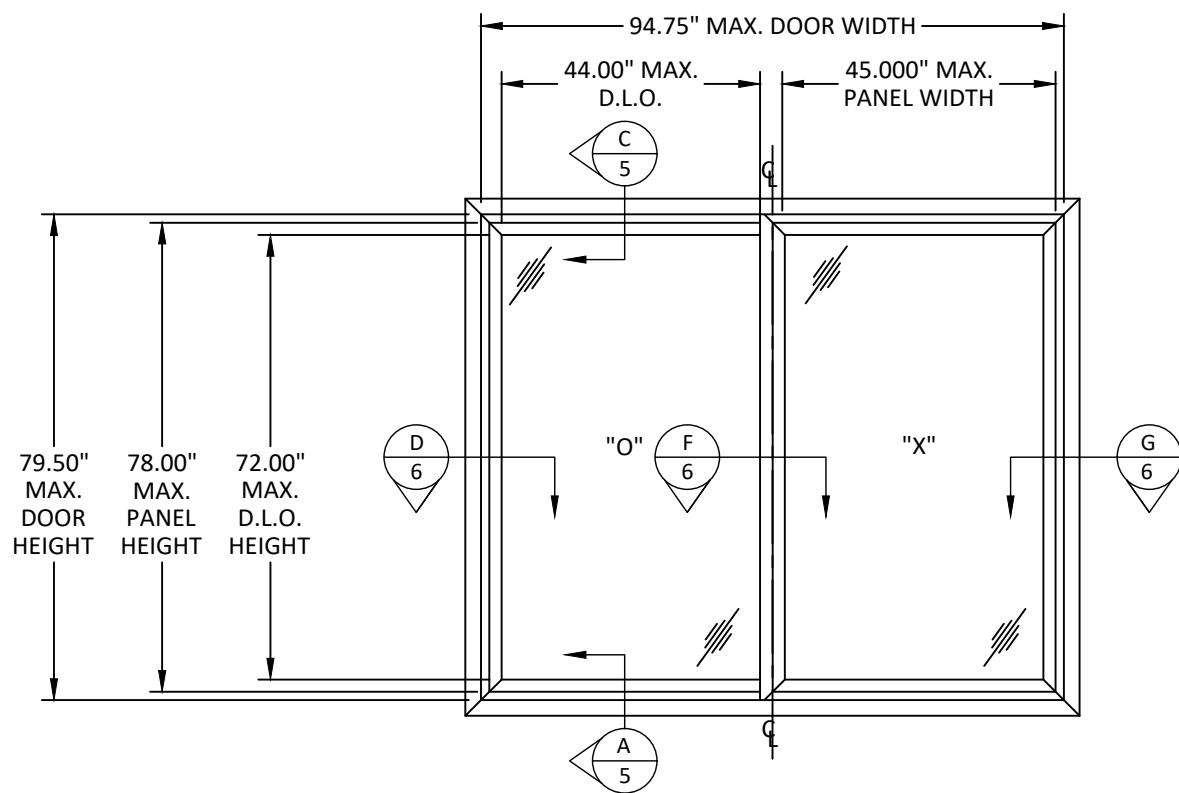
DATE:	07.20.2020	
DWG. BY:	SM	CHK. BY: HFN
SCALE:	NTS	
DWG. #:	ATR058	
SECTION:	3	



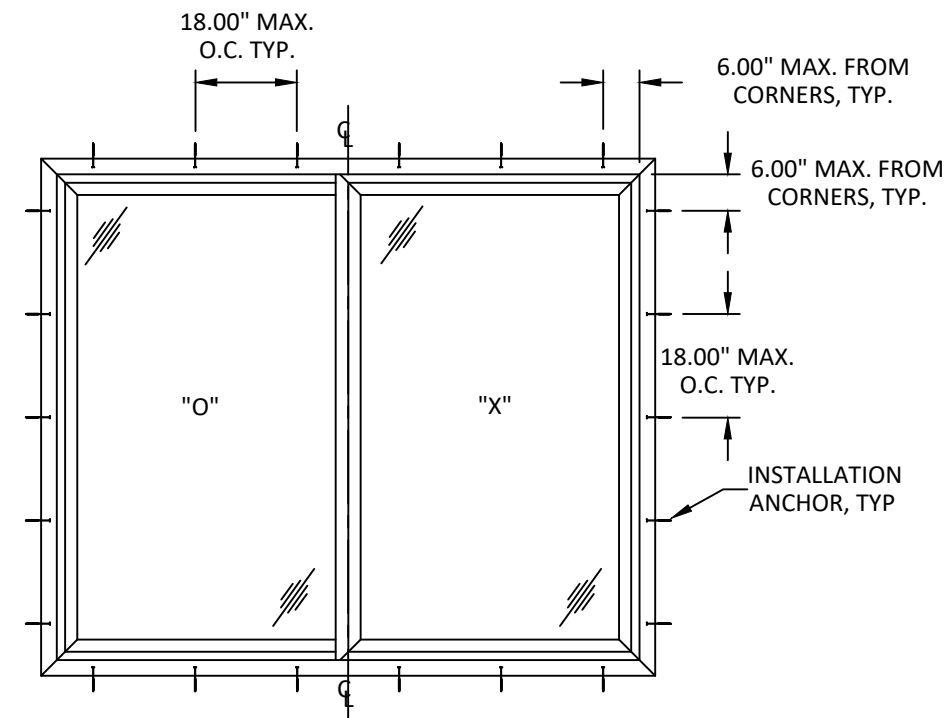
ELEVATION
EXTERIOR VIEW - FIN INSTALLATION



ANCHOR LAYOUT
FIN INSTALLATION



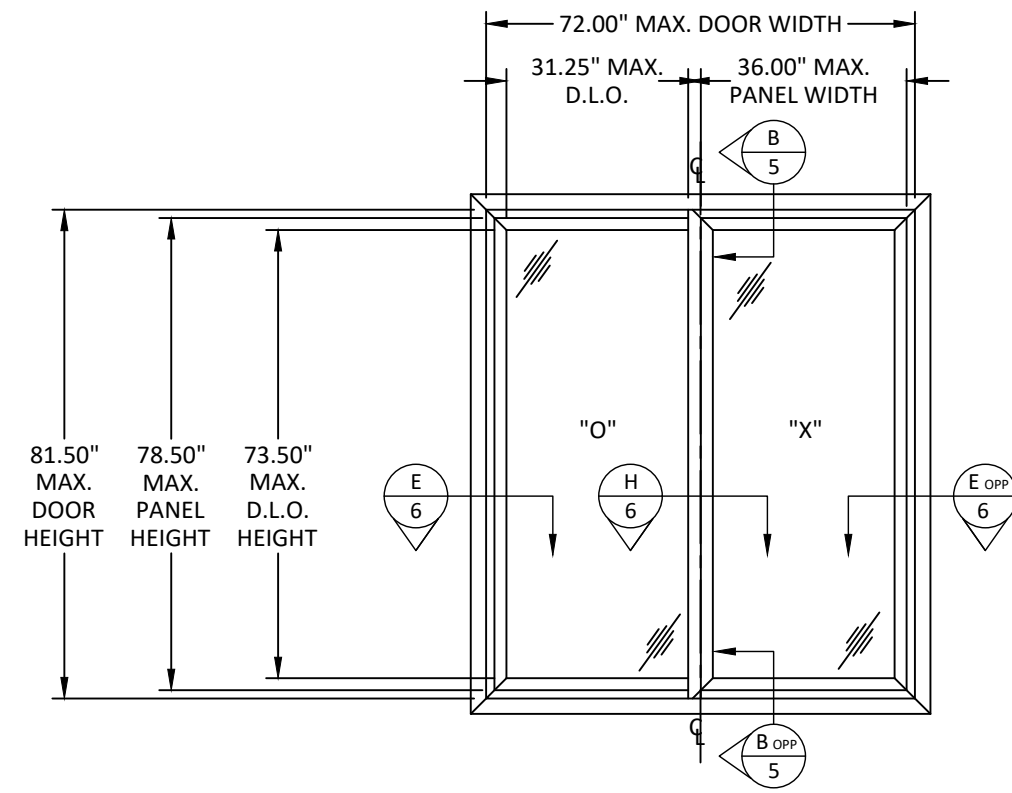
ELEVATION
EXTERIOR VIEW - FINLESS INSTALLATION



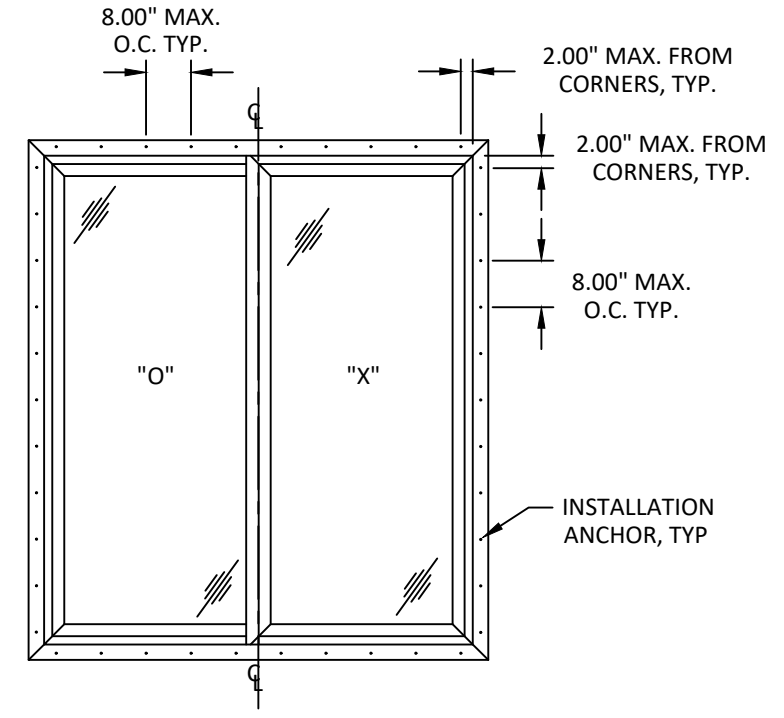
ANCHOR LAYOUT
FINLESS INSTALLATION

c:\users\ycruz\onedrive - building drops - building drops, inc\tdi-20-0704 - tdi submittal - win-1654, dr-387 and win-1175 (revision)\dwgs\atrium\atr058.dwg 7/29/2020 10:15 AM

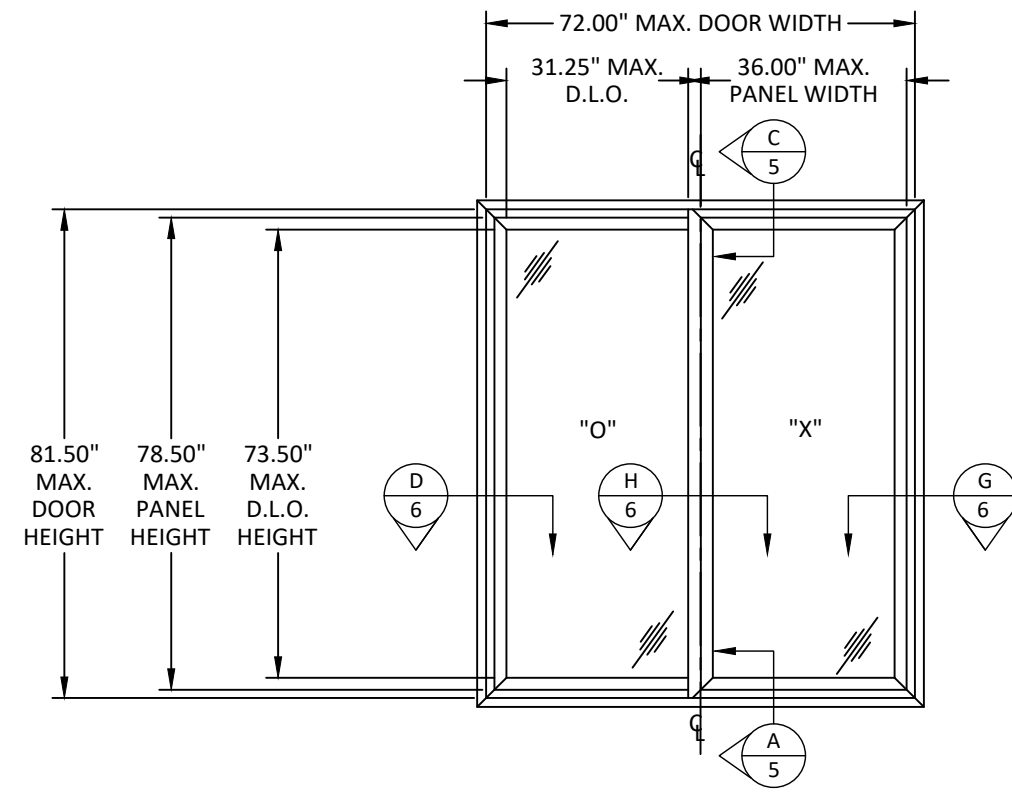
c:\users\ycruz\onedrive - building drops - building drops, inc\tdi-20-0704 - tdi submittal - win-1654, dr-387 and win-1175 (revision)\dwgs\at058\at058.dwg 7/29/2020 10:15 AM



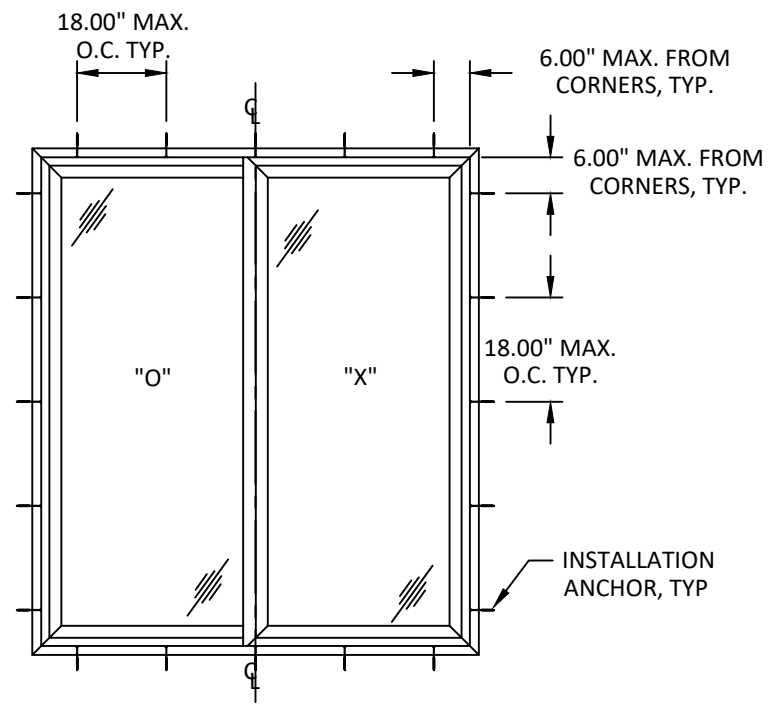
ELEVATION
EXTERIOR VIEW - FIN INSTALLATION



ANCHOR LAYOUT
FIN INSTALLATION



ELEVATION
EXTERIOR VIEW - FINLESS INSTALLATION



ANCHOR LAYOUT
FINLESS INSTALLATION



ATRIUM CORPORATION
9001 AMBASSADOR ROW
DALLAS, TX 75247
PH: (214) 637-2696 FAX: (214) 424-6734

TITLE: **SERIES 332/388
SLIDING GLASS DOOR**

ELEVATIONS AND
ANCHOR LAYOUT

PREPARED BY:
BUILDING DROPS, INC.
398 E. DANIA BEACH BLVD., STE. 338
DANIA BEACH, FL 33004
PH: (954) 399-8478
FAX: (954) 744-4738
WEB: www.buildingdrops.com



REMARKS	BY	DATE
TESTING UPDATE	SM	07/14
CODE CHANGE	YC	07/20

THE INSTALLATION DETAILS DESCRIBED HEREIN ARE GENERIC AND MAY NOT REFLECT ACTUAL CONDITIONS FOR A SPECIFIC SITE. IF SITE CONDITIONS CAUSE INSTALLATION TO DEVIATE FROM THE REQUIREMENTS DETAILED HEREIN, A LICENSED ENGINEER OR ARCHITECT SHALL PREPARE SITE SPECIFIC DOCUMENTS FOR USE WITH THIS DOCUMENT.



HERMES F. NORERO, P.E.
TEXAS P.E. No 113471
BUILDING DROPS, INC
398 E. DANIA BEACH BLVD. # 338
DANIA BEACH, FL 33004
TBPE CERT. OF AUTHORIZATION NO. 13734

DATE: 07.20.2020
DWG. BY: SM CHK. BY: HFN
SCALE: NTS
DWG. #: ATR058

SECTION:

7/29/2020 10:15 AM
 c:\users\ycruz\onedrive - building drops - building drops, inc\tdi-20-0704 - tdi submittal - win-1654, dr-387 and win-1175 (revision)\dwg\atr058\atr058.dwg



ATRIUM CORPORATION
 9001 AMBASSADOR ROW
 DALLAS, TX 75247
 PH: (214) 637-2696 FAX: (214) 424-6734

TITLE: SERIES 332/388 SLIDING GLASS DOOR
 VERTICAL SECTIONS AND GLAZING DETAILS
PREPARED BY: BUILDING DROPS, INC.
 398 E. DANIA BEACH BLVD., STE. 338
 DANIA BEACH, FL 33004
 PH: (954) 399-8478
 FAX: (954) 744-4738
 WEB: www.buildingdrops.com

REMARKS	BY	DATE
TESTING UPDATE	SM	07/14
CODE CHANGE	YC	07/20

THE INSTALLATION DETAILS DESCRIBED HEREIN ARE GENERIC AND MAY NOT REFLECT ACTUAL CONDITIONS FOR A SPECIFIC SITE. IF SITE CONDITIONS CAUSE INSTALLATION TO DEVIATE FROM THE REQUIREMENTS DETAILED HEREIN, A LICENSED ENGINEER OR ARCHITECT SHALL PREPARE SITE SPECIFIC DOCUMENTS FOR USE WITH THIS DOCUMENT.

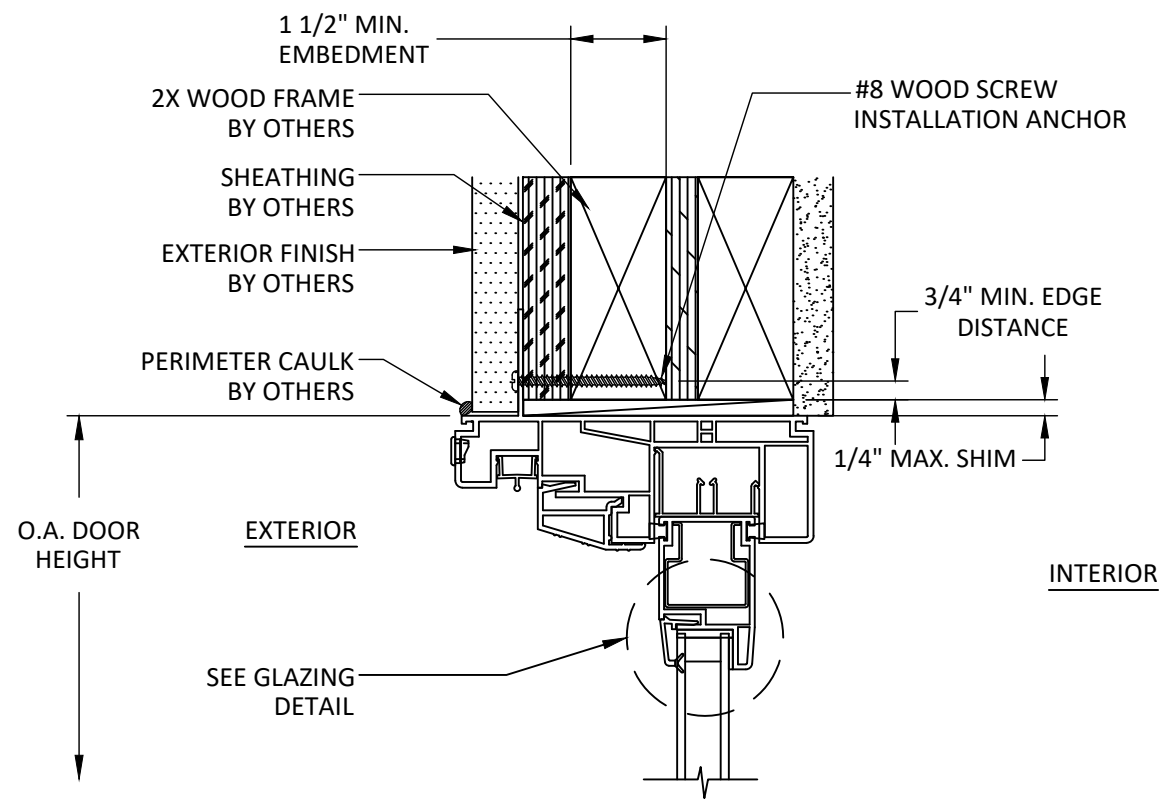


HERMES F. NORERO, P.E.
 TEXAS P.E. No 113471
 BUILDING DROPS, INC
 398 E. DANIA BEACH BLVD. # 338
 DANIA BEACH, FL 33004
 TBPE CERT. OF AUTHORIZATION NO. 13734

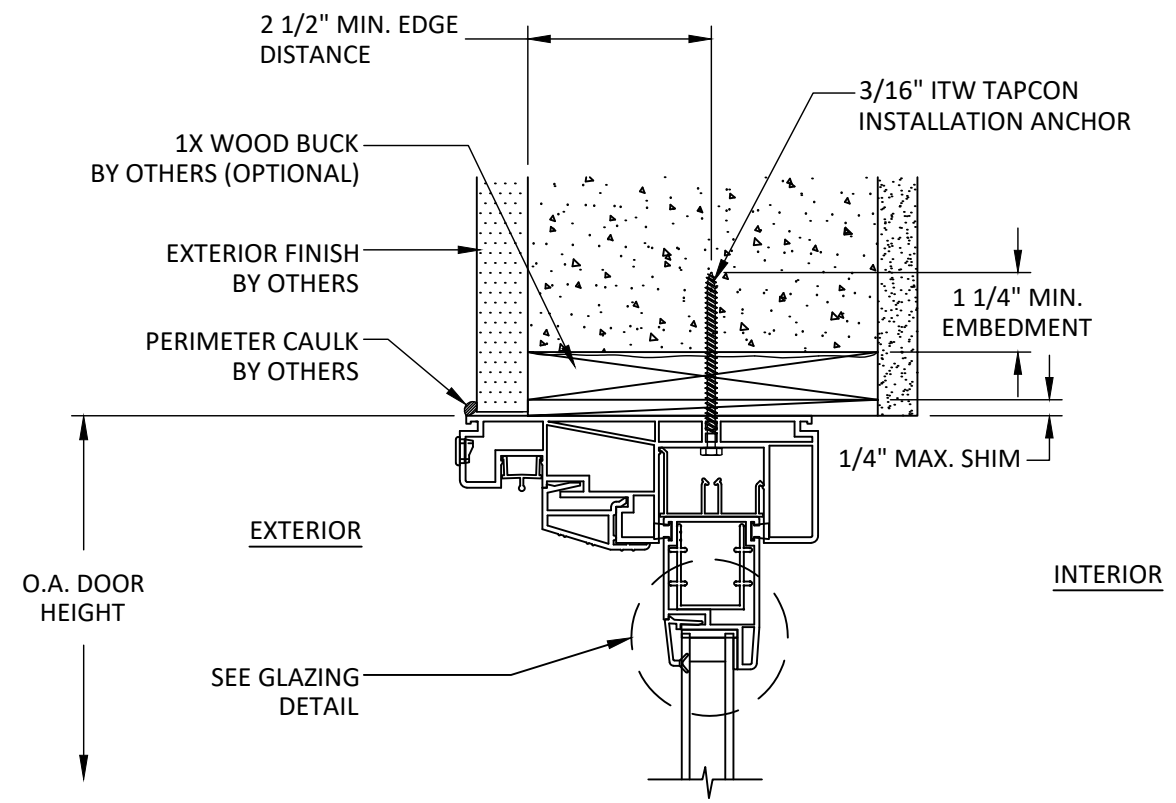
DATE: 07.20.2020

DWG. BY: SM	CHK. BY: HFN
SCALE: NTS	
DWG. #: ATR058	

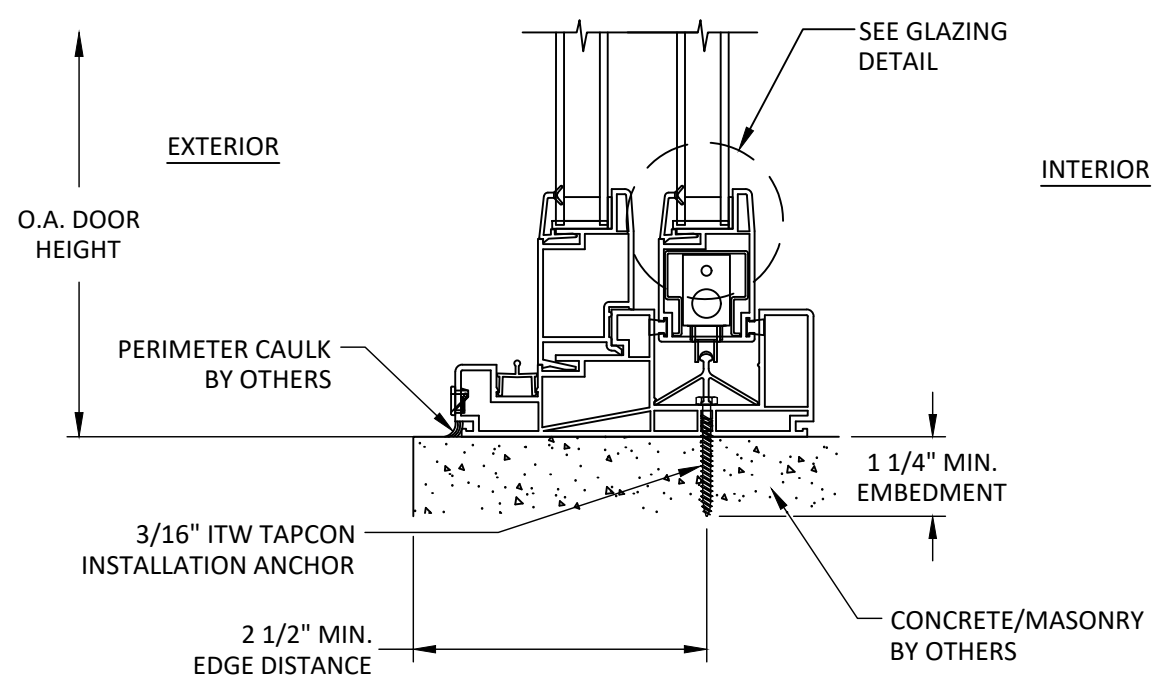
SECTION: 5 OF 6



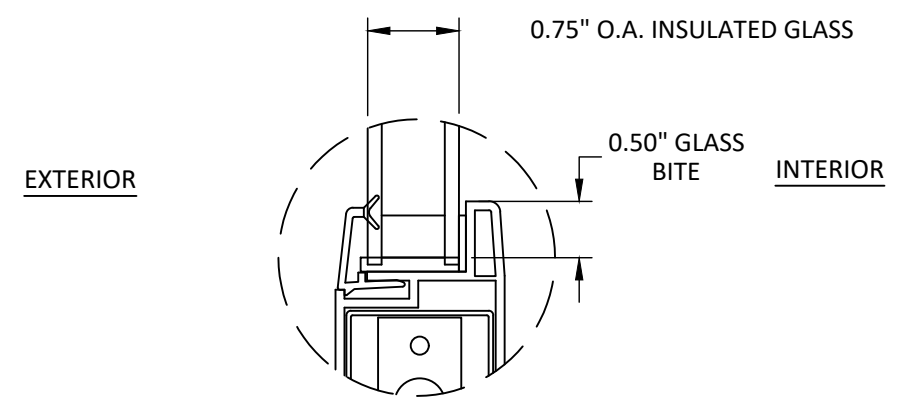
B
5
VERTICAL SECTION
 2X WOOD FRAME - HEAD
 FIN INSTALLATION



C
5
VERTICAL SECTION
 CONCRETE/MASONRY - HEAD
 FINLESS INSTALLATION WITH WOOD BUCK
 OR DIRECTLY TO CONCRETE/MASONRY



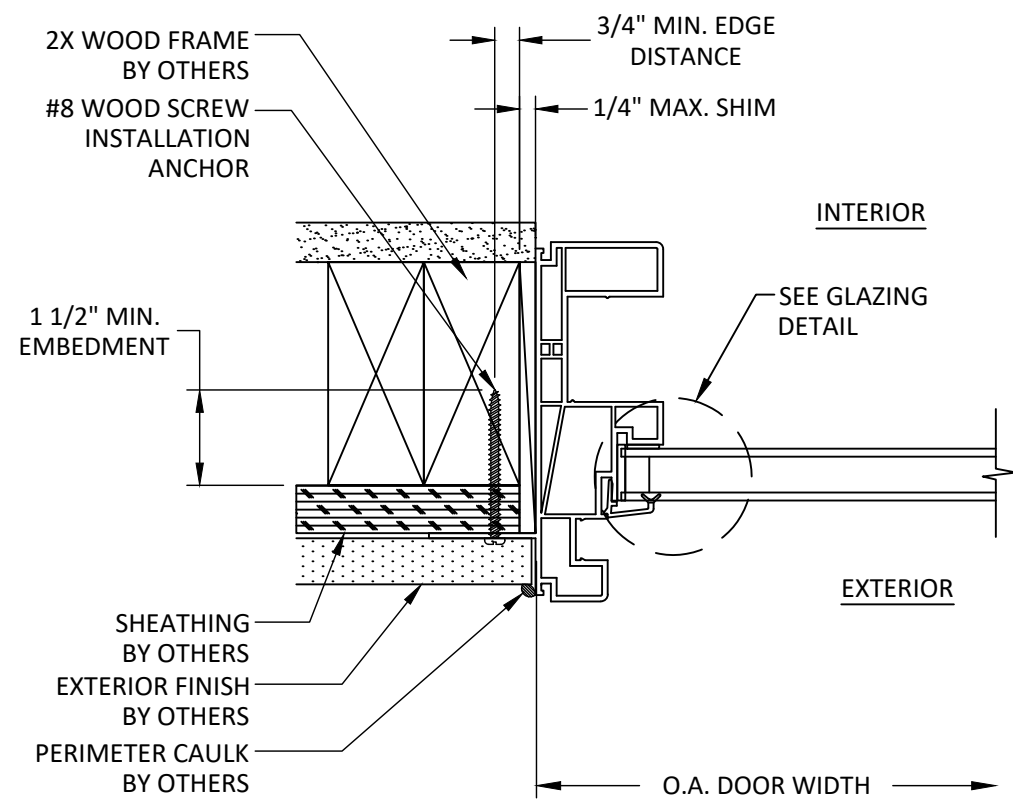
A
5
VERTICAL SECTION
 CONCRETE/MASONRY - SILL
 FINLESS INSTALLATION



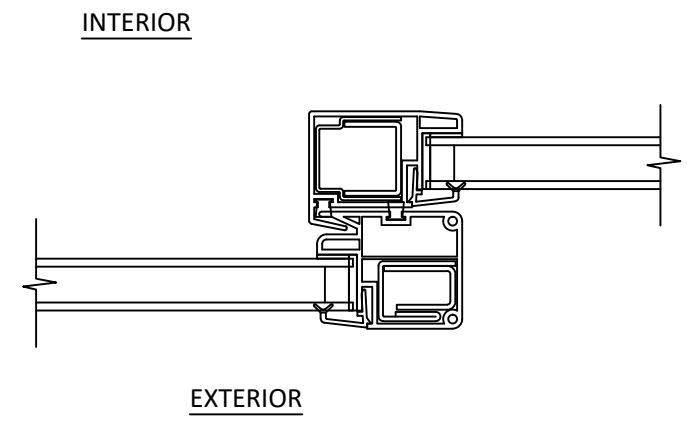
GLAZING DETAIL

- NOTES:**
- GLASS THICKNESS AND TYPE SHALL COMPLY WITH ASTM E 1300 REQUIREMENT GLASS CHARTS.
 - ALL GLAZING CONFIGURATIONS SHALL COMPLY WITH SAFETY GLAZING REQUIREMENTS OUTLINED IN THE 2006 IRC/IBC SECTION 2406.

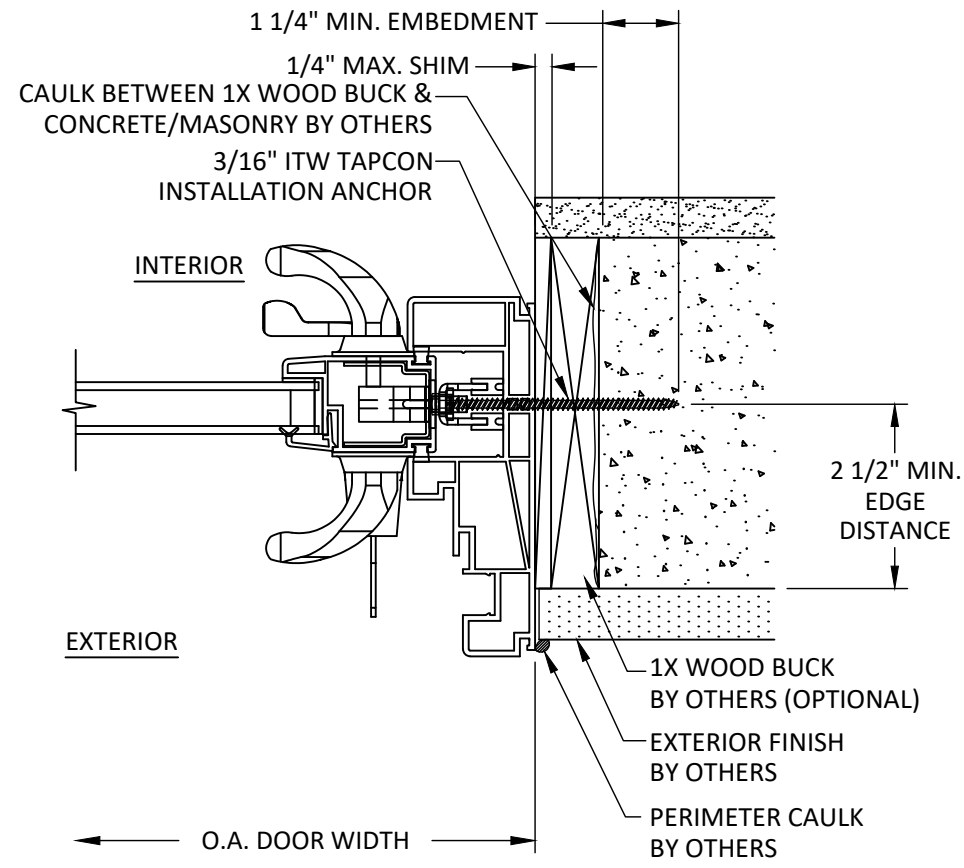
7/29/2020 10:15 AM
c:\users\ycruz\onedrive - building drops, inc\tdi-20-0704 - tdi submittal - win-1654, dr-387 and win-1175 (revision)\dwg\atros58.atr058.dwg



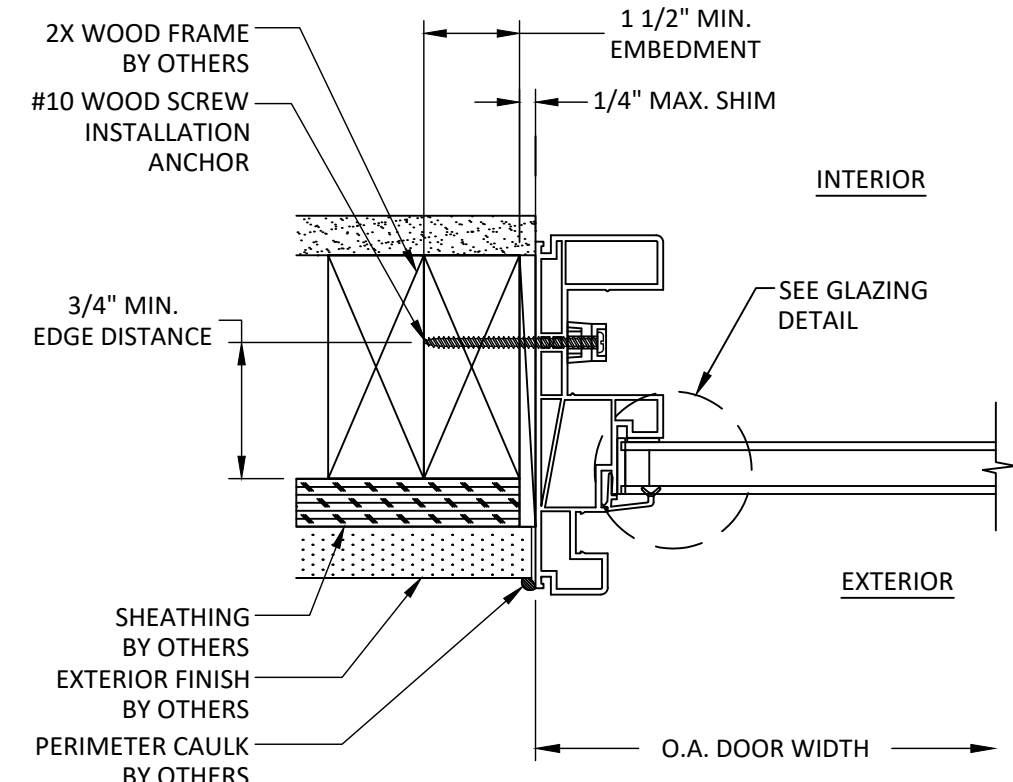
E
6 **HORIZONTAL SECTION**
2X WOOD FRAME - JAMB FIN INSTALLATION



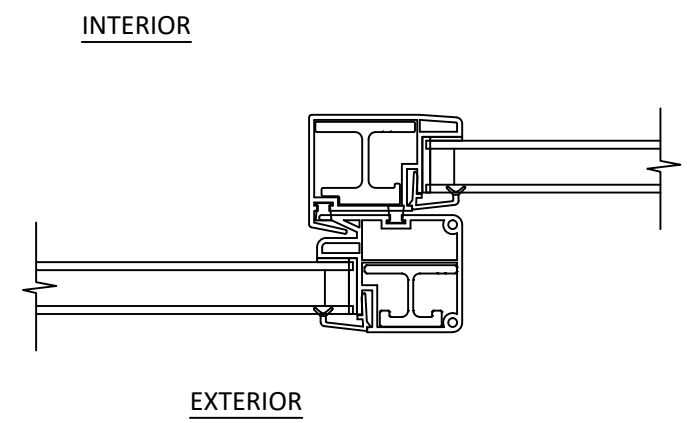
F
6 **HORIZONTAL SECTION**
INTERLOCK STEEL REBAR



G
6 **HORIZONTAL SECTION**
CONCRETE/MASONRY - JAMB FINLESS INSTALLATION WITH WOOD BUCK OR DIRECTLY TO CONCRETE/MASONRY



D
6 **HORIZONTAL SECTION**
2X WOOD FRAME - JAMB FINLESS INSTALLATION



H
6 **HORIZONTAL SECTION**
INTERLOCK ALUMINUM REBAR

ATRIUM
WINDOWS AND DOORS

ATRIUM CORPORATION
9001 AMBASSADOR ROW
DALLAS, TX 75247
PH: (214) 637-2696 FAX: (214) 424-6734

TITLE: **SERIES 332/388 SLIDING GLASS DOOR**

HORIZONTAL SECTIONS

PREPARED BY: **BUILDING DROPS, INC.**
398 E. DANIA BEACH BLVD., STE. 338
DANIA BEACH, FL 33004
PH: (954) 399-8478
FAX: (954) 744-4738
WEB: www.buildingdrops.com

REMARKS	BY	DATE
TESTING UPDATE	SM	07/14
CODE CHANGE	YC	07/20

THE INSTALLATION DETAILS DESCRIBED HEREIN ARE GENERIC AND MAY NOT REFLECT ACTUAL CONDITIONS FOR A SPECIFIC SITE. IF SITE CONDITIONS CAUSE INSTALLATION TO DEVIATE FROM THE REQUIREMENTS DETAILED HEREIN, A LICENSED ENGINEER OR ARCHITECT SHALL PREPARE SITE SPECIFIC DOCUMENTS FOR USE WITH THIS DOCUMENT.



HERMES F. NORERO, P.E.
TEXAS P.E. No 113471
BUILDING DROPS, INC
398 E. DANIA BEACH BLVD. # 338
DANIA BEACH, FL 33004
TBPE CERT. OF AUTHORIZATION NO. 13734

DATE: **07.20.2020**

DWG. BY: SM	CHK. BY: HFN
-----------------------	------------------------

SCALE: **NTS**

DWG. #: **ATR058**

SECTION:
6

OF 6