

GLAZED FIBERGLASS SINGLE DOOR w/ SIDELITE(S)

**OUTSWING
"IMPACT"**

EVALUATED FOR USE IN THE STATE OF TEXAS

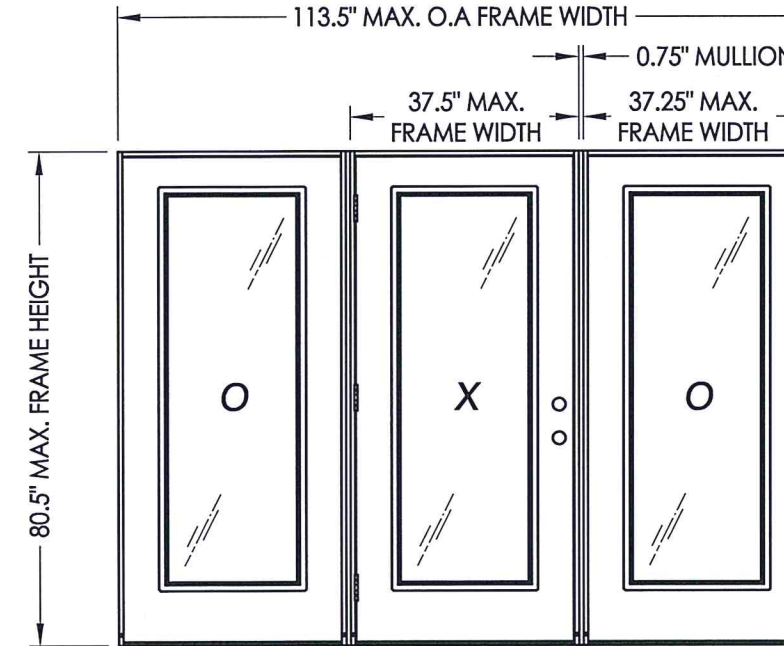
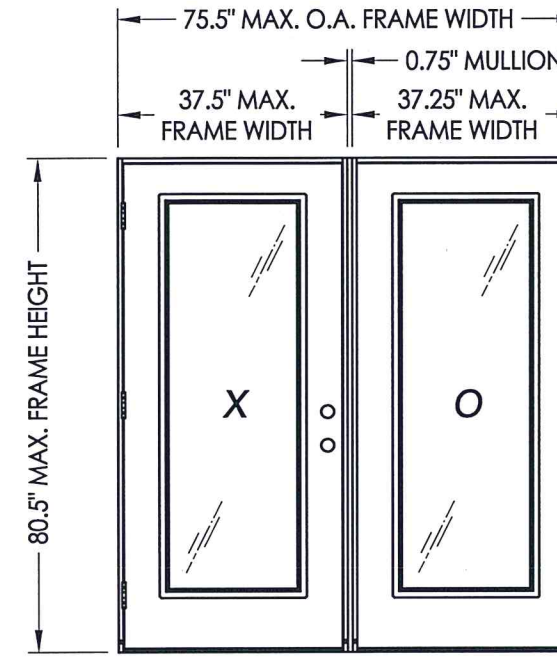
DR-273

The Fiberglass Door system described herein complies with the 2018 International Residential Code (IRC), Sections R301 & R609 and the 2018 International Building Code (IBC), Sections 1404.13, 1609, 1709.5, 2403 and 2404 subject to the following conditions:

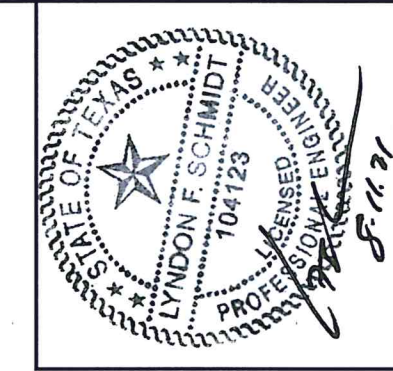
1. Anchors shall be as listed and spaced as shown in the details. Anchor embedment to base material shall be beyond wall dressing or stucco.
2. This system has been tested and evaluated as a large missile impact protective system for installation in areas requiring wind-borne debris protection. This product meets missile level "D" as defined in ASTM E 1996.
3. Allowable design pressure requirements must be equal to or less than the design pressure rating shown in the design pressure chart, sheet 1 of this drawing.
4. Conditions not covered by this drawing are subject to further engineering analysis.

TABLE OF CONTENTS

SHEET#	DESCRIPTION
1	Typical elevations, design pressures & general notes
2	Door panel details and glazing details
3	Door panel details and glazing details
4	Sidelite panel details and glazing details
5	Elevations
6	Horizontal cross sections
7	Vertical cross sections
8	Vertical cross sections
9	Frame anchoring (OX/XO)
10	Frame anchoring (OXO)
11	Components
12	Bill of materials



CONFIGURATION	MAX. FRAME DIMENSION	DESIGN PRESSURE (PSF)	
		POSITIVE	NEGATIVE
OX/XO	74.5" x 80.5"	+ 55.0	- 55.0
OXO	113.5" x 80.5"	+ 55.0	- 55.0

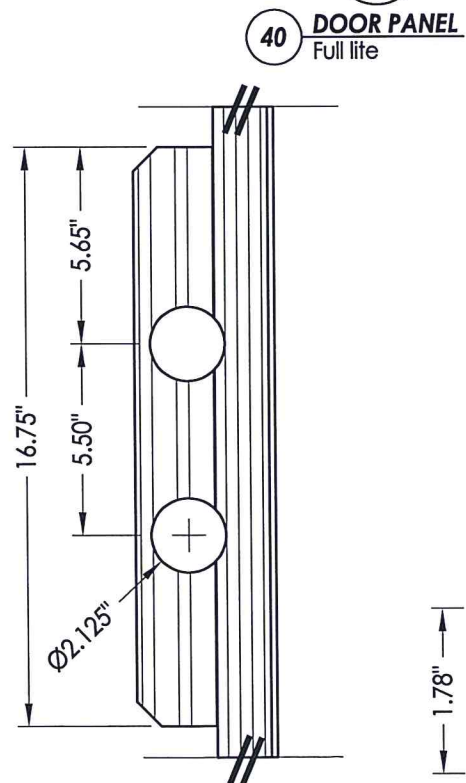
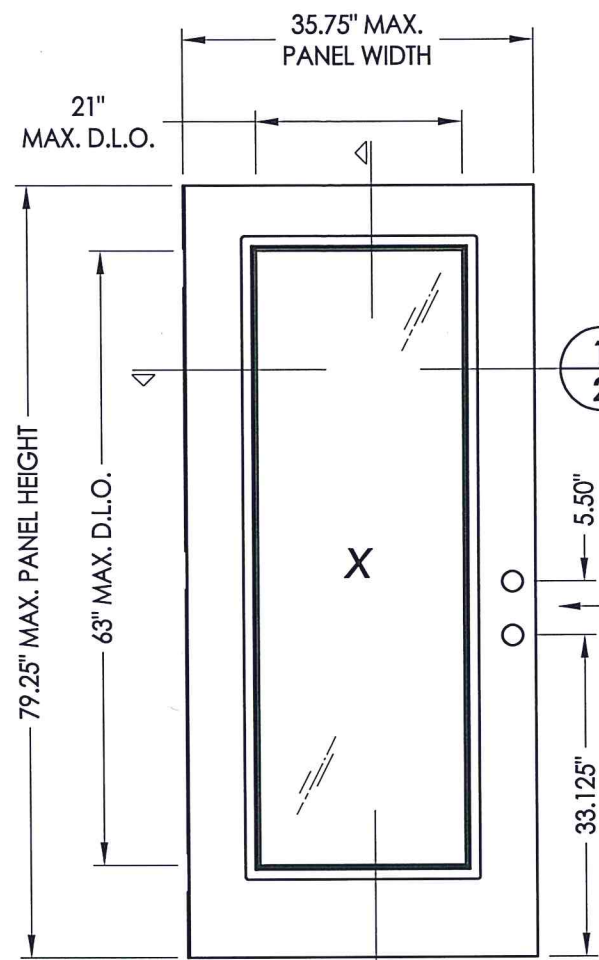


Documents Prepared By: Lyndon F. Schmidt, P.E.
TEXAS P.E. #104123

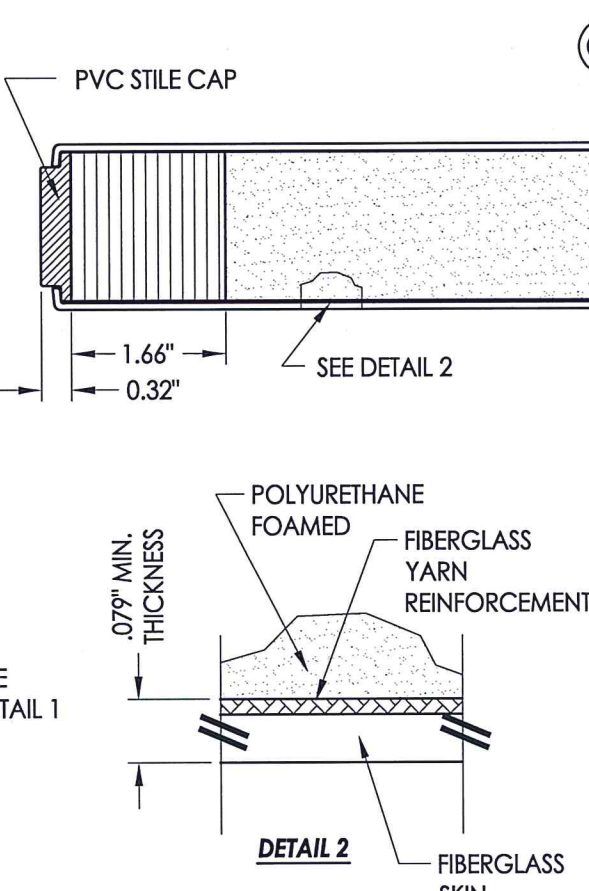
RW BUILDING CONSULTANTS, INC.
P.O. Box 230 Valrico FL 33595
Phone No.: 813.659.9197

TEXAS BOARD OF PROFESSIONAL ENGINEERS
CERTIFICATE OF REGISTRATION # F-11852

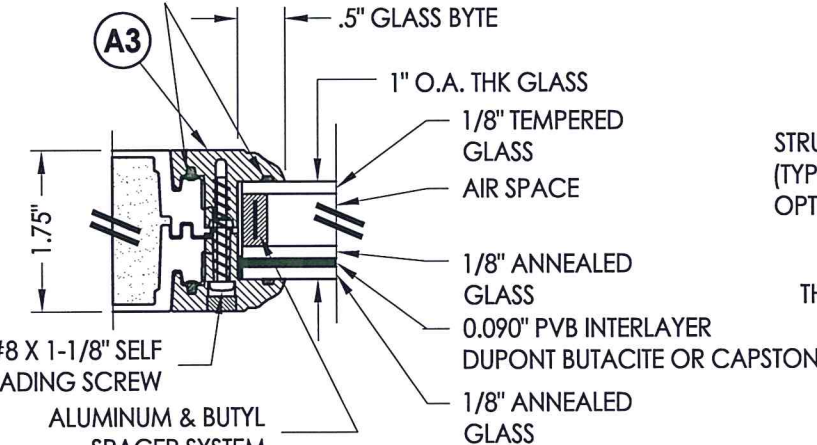
PRODUCT:	TRINITY GLASS INT'L
PART OR ASSEMBLY:	TYPICAL ELEVATION, DESIGN PRESSURES & GENERAL NOTES
NO.	1
DATE	8/10/21
BY	LFS
REVISIONS	
DATE:	5/10/12
SCALE:	N.T.S.
DWG. BY:	JK
CHK. BY:	LFS
DRAWING NO.:	TX-4156
SHEET	1 OF 12



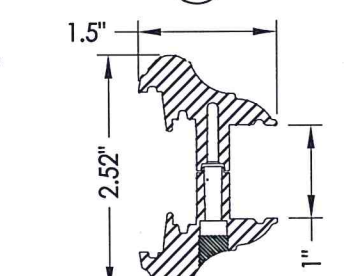
A3 FLUSH GLAZED FRAME
ABS or PC/ASA



DETAIL 2
POLYURETHANE FOAMED
FIBERGLASS YARN REINFORCEMENT
FIBERGLASS SKIN

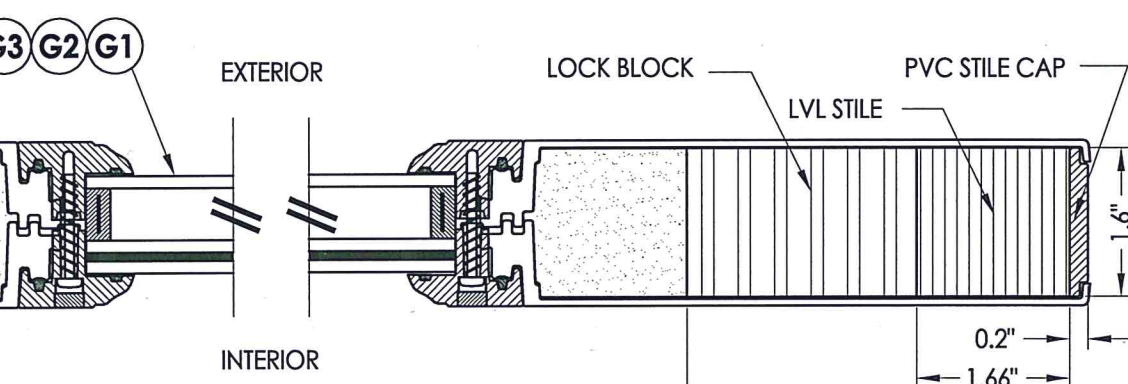


G1 GLAZING DETAIL

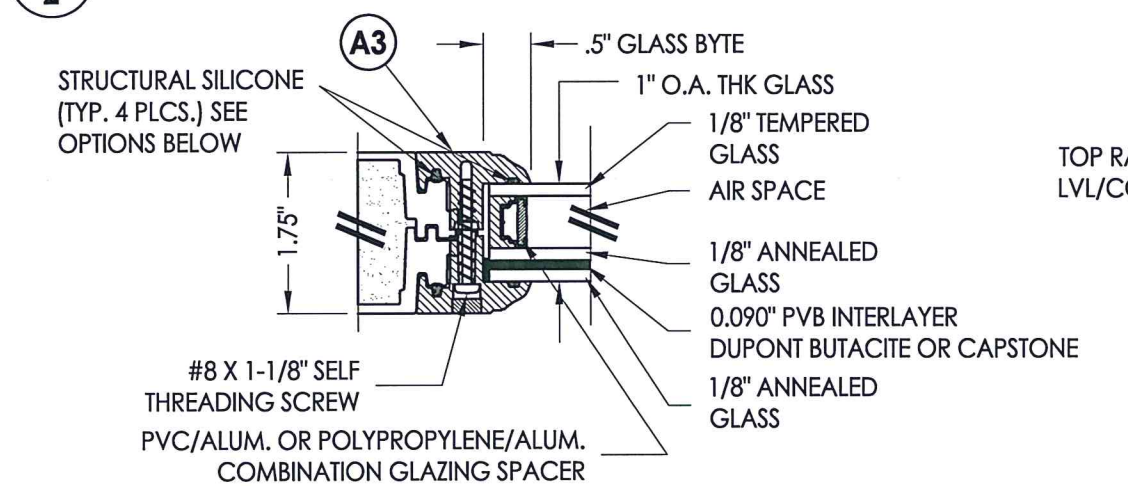


B3 MAHOGANY LITE FRAME
ABS or PC/ASA

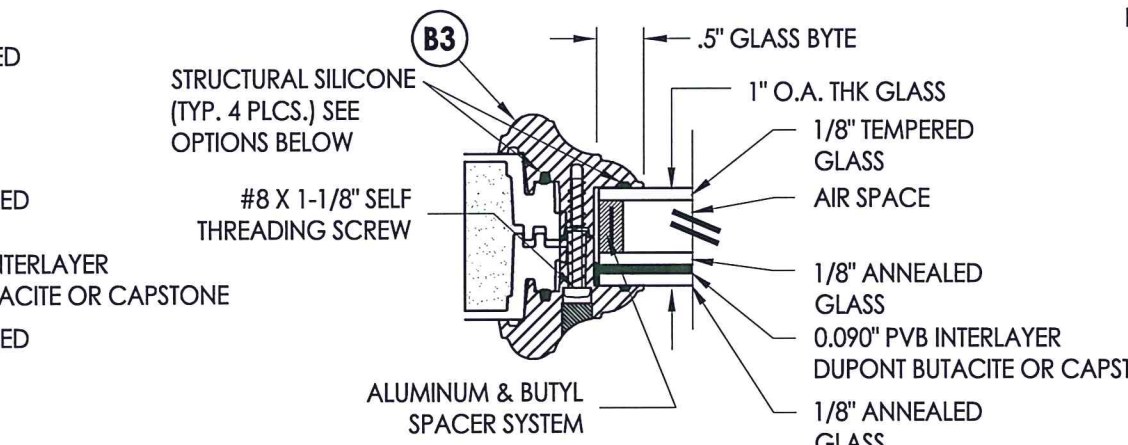
LITE FRAME SCREW SPACING:
At each corner plus 6 more along sides (11\"/>



1 HORIZONTAL CROSS SECTION

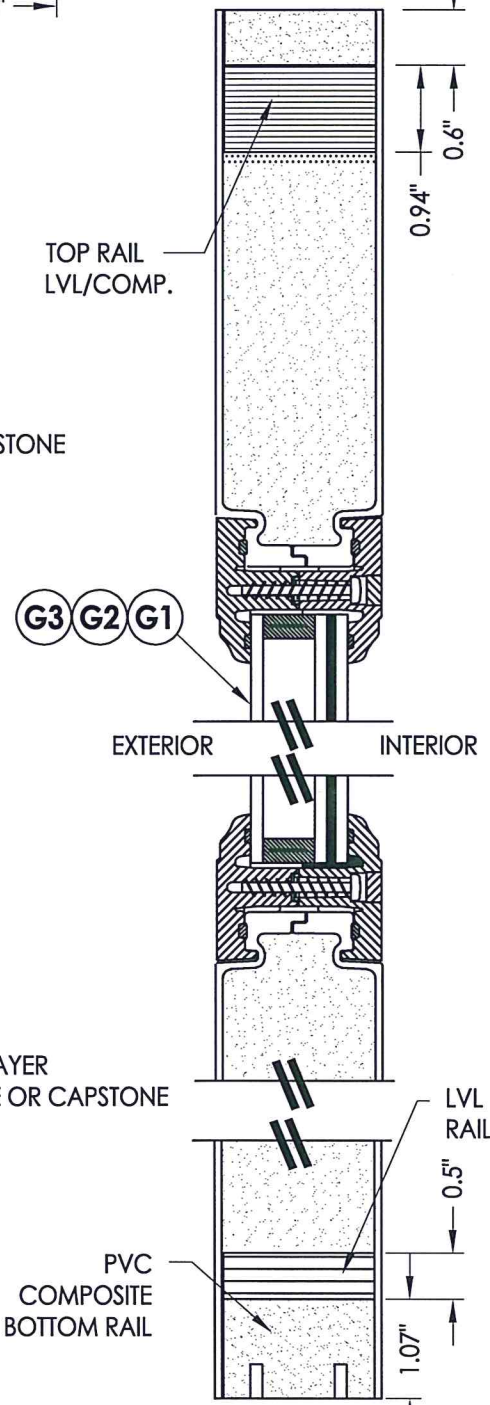


G2 GLAZING DETAIL



G3 GLAZING DETAIL

STRUCTURAL SILICONE OPTIONS:
SILICONE BY CAPSTONE (4PL)
DOW 995 STRUCTURAL SILICONE
SILICONE BY DONGYANG SILICONE CO.



2 VERTICAL CROSS SECTION

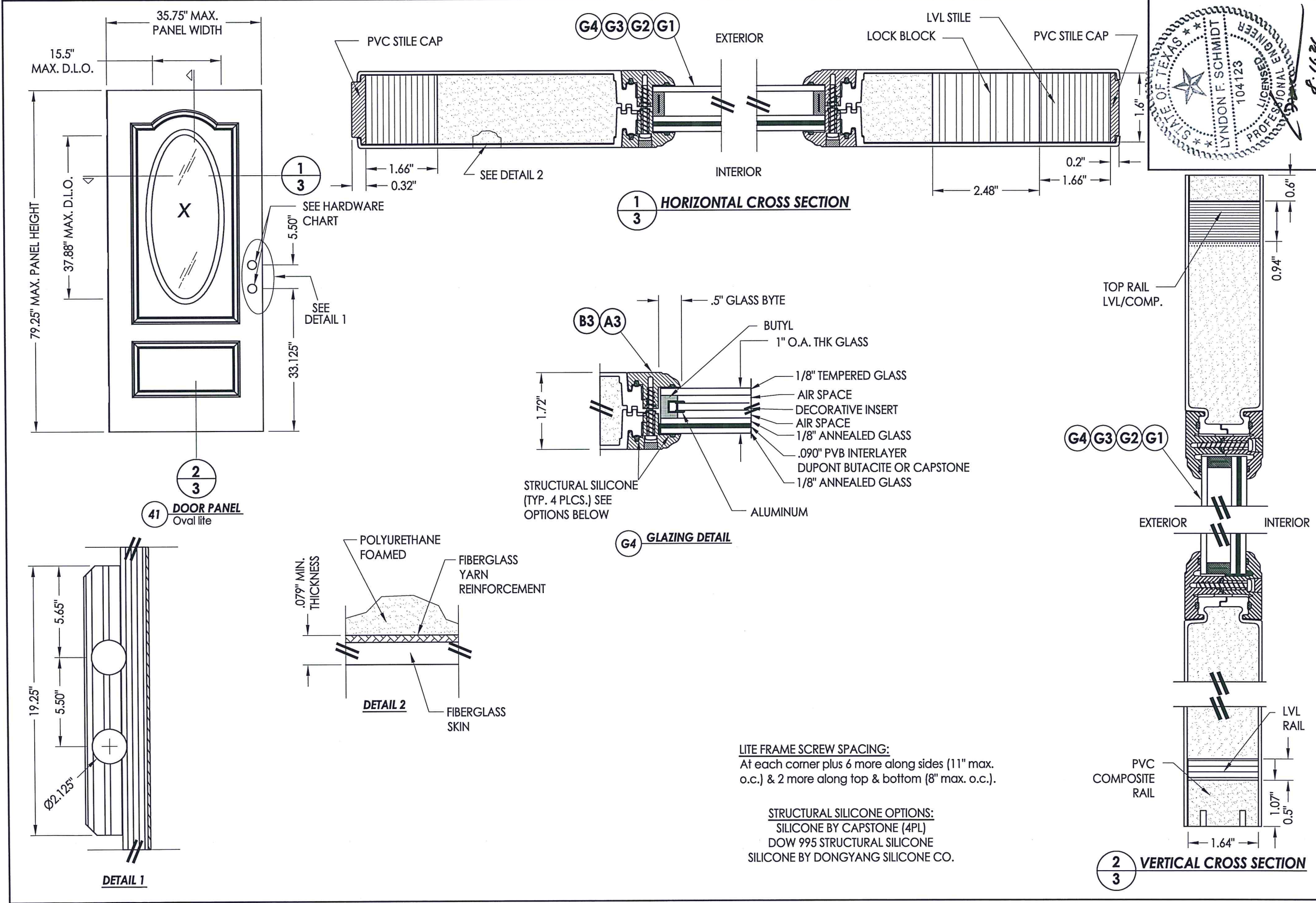


Documents Prepared By: Lyndon F. Schmidt, P.E.
TEXAS P.E. #104123

RW BUILDING CONSULTANTS, INC.
P.O. Box 230 Valrico FL, 33595
Phone No.: 813.659.9197

TEXAS BOARD OF PROFESSIONAL ENGINEERS
CERTIFICATE OF REGISTRATION # F-11852

PRODUCT:	TRINITY GLASS INT'L	
PART OR ASSEMBLY:	DOOR PANEL DETAILS	
NO.	DATE	BY
1	8/10/21	UPDATE TO 2018 IBC/IRC
REVISIONS		
DATE:	5/10/12	
SCALE:	N.T.S.	
DWG. BY:	JK	
CHK. BY:	LFS	
DRAWING NO.:	TX-4156	
SHEET	2	OF 12



LITE FRAME SCREW SPACING:
At each corner plus 6 more along sides (11" max. o.c.) & 2 more along top & bottom (8" max. o.c.).

STRUCTURAL SILICONE OPTIONS:
SILICONE BY CAPSTONE (4PL)
DOW 995 STRUCTURAL SILICONE
SILICONE BY DONGYANG SILICONE CO.



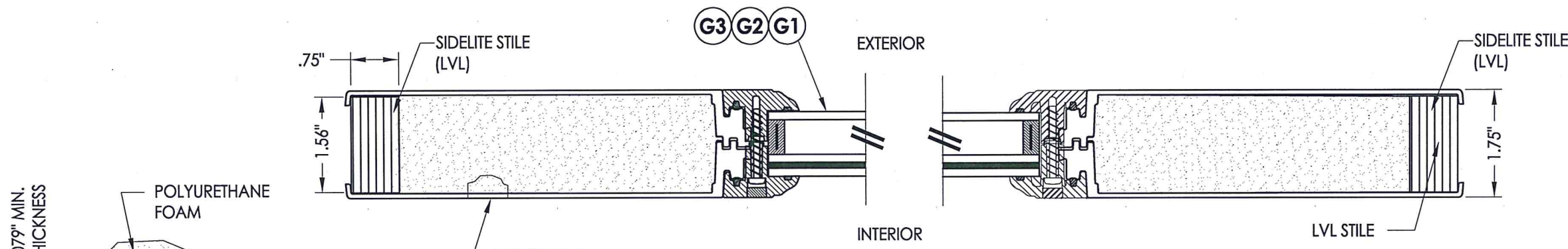
Documents Prepared By: Lyndon F. Schmidt, P.E.
TEXAS P.E. #104123

RW BUILDING CONSULTANTS, INC.
P.O. Box 230 Vairico FL 33595
Phone No.: 813.659.9197

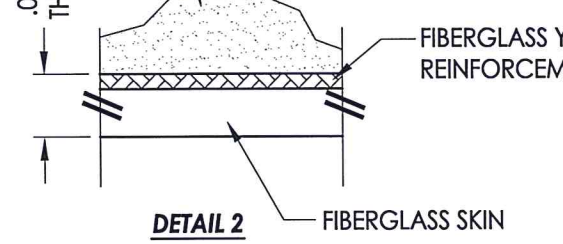
TEXAS BOARD OF PROFESSIONAL ENGINEERS
CERTIFICATE OF REGISTRATION # F-11852

PRODUCT:	TRINITY GLASS INT'L
PART OR ASSEMBLY:	DOOR PANEL DETAILS AND GLAZING DETAILS
DATE:	5/10/12
SCALE:	N.T.S.
DWG. BY:	JK
CHK. BY:	LFS
DRAWING NO.:	TX-4156
SHEET	3 OF 12

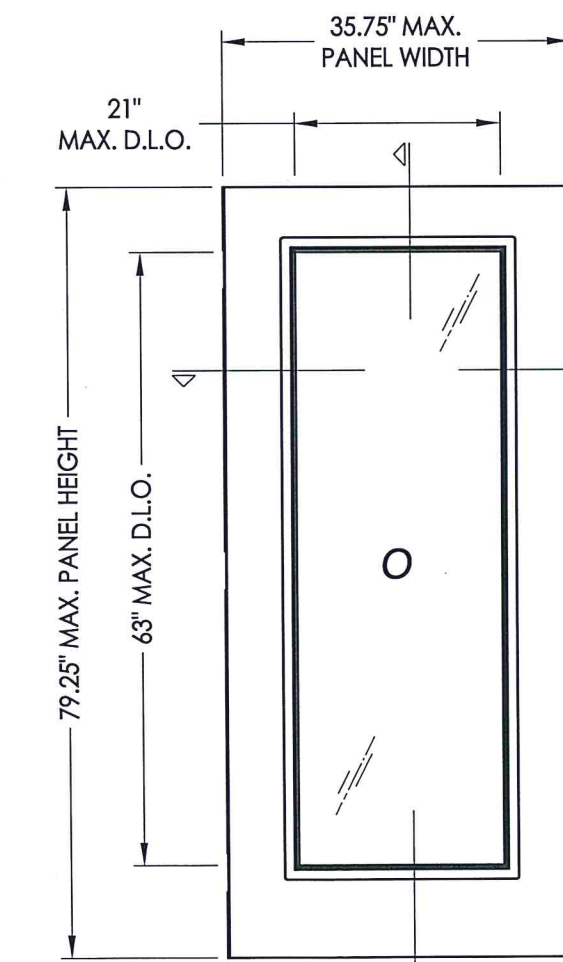
Z:\Clients\Trinity Glass PERMANENT\B - Texas Dept of Ins\DR-273\Drawings\TX-4154-57.dwg



1
4 HORIZONTAL CROSS SECTION

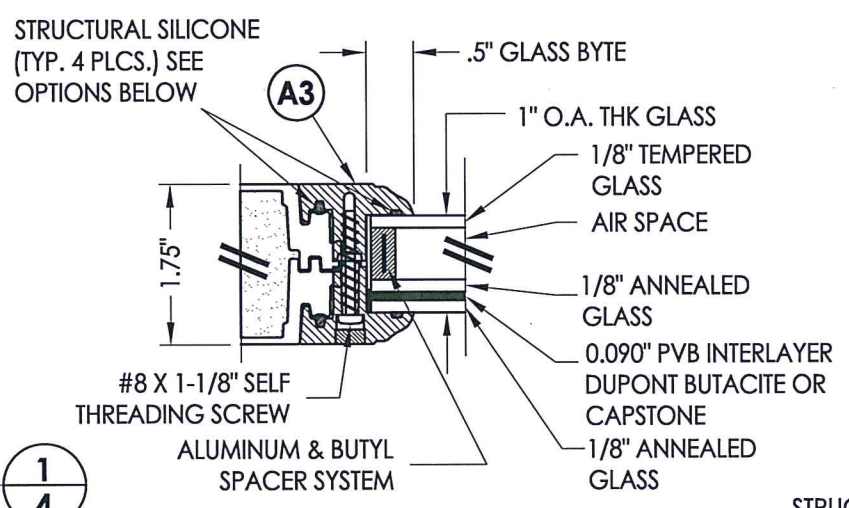


DETAIL 2

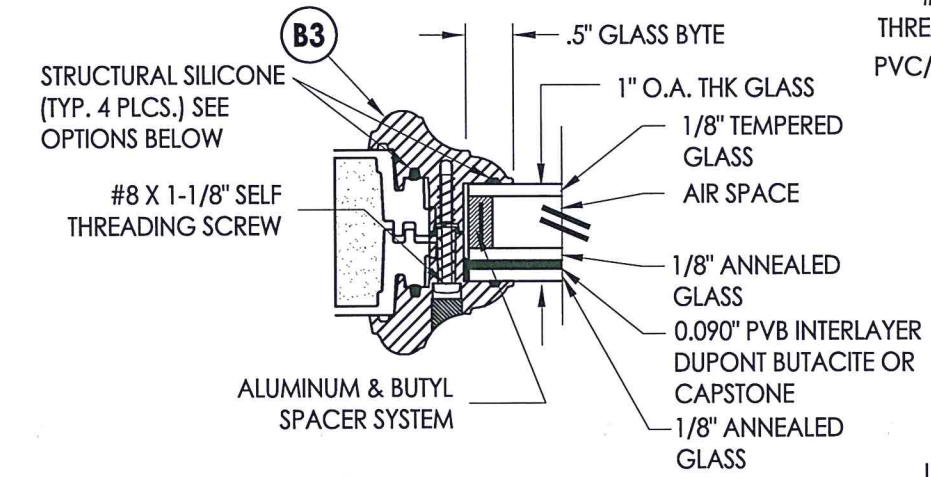


2
4

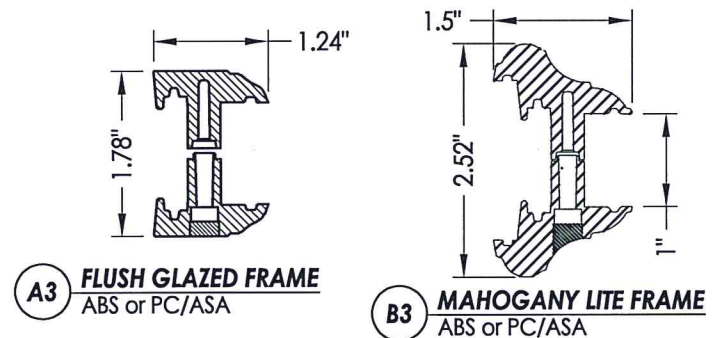
DOOR SKIN: 0.079" MIN. THK. FIBERGLASS
CORE MATERIAL: POLYURETHANE FOAM



G1 GLAZING DETAIL

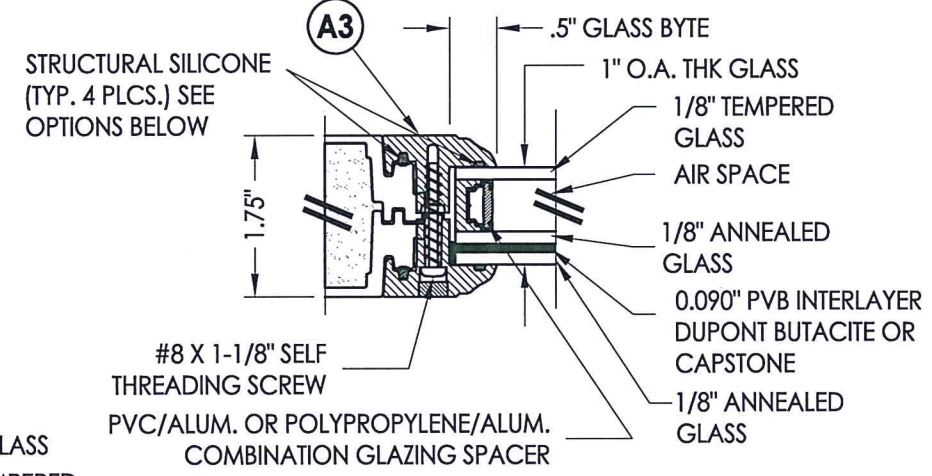


G3 GLAZING DETAIL



A3 FLUSH GLAZED FRAME
ABS or PC/ASA

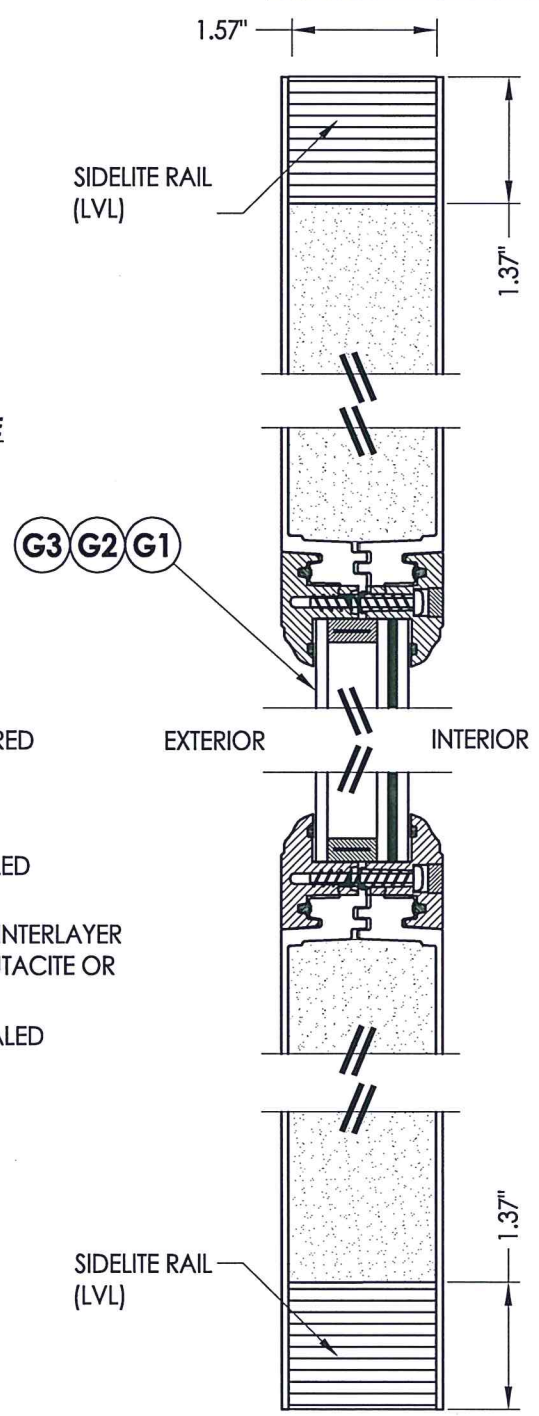
B3 MAHOGANY LITE FRAME
ABS or PC/ASA



G2 GLAZING DETAIL

STRUCTURAL SILICONE OPTIONS:
SILICONE BY CAPSTONE (4PL)
DOW 995 STRUCTURAL SILICONE
SILICONE BY DONGYANG SILICONE CO.

LITE FRAME SCREW SPACING:
At each corner plus 6 more along sides (11" max. o.c.) & 2 more along top & bottom (8" max. o.c.).



2
4 VERTICAL CROSS SECTION



Documents Prepared By: Lyndon F. Schmidt, P.E.
TEXAS P.E. #104123

RW BUILDING CONSULTANTS, INC.
P.O. Box 230 Valrico FL, 33595
Phone No.: 813.659.9197

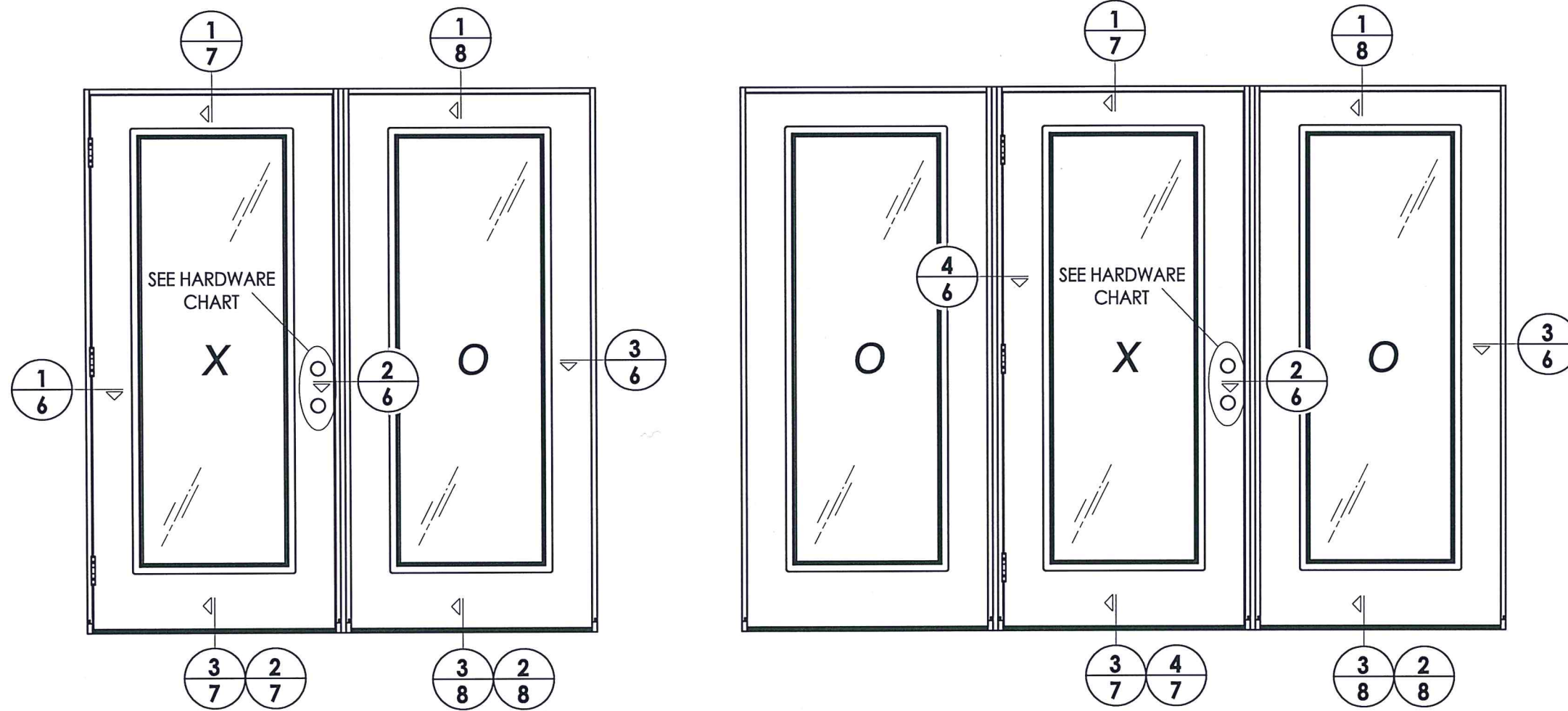
TEXAS BOARD OF PROFESSIONAL ENGINEERS
CERTIFICATE OF REGISTRATION # F-11852

PRODUCT: TRINITY GLASS INT'L

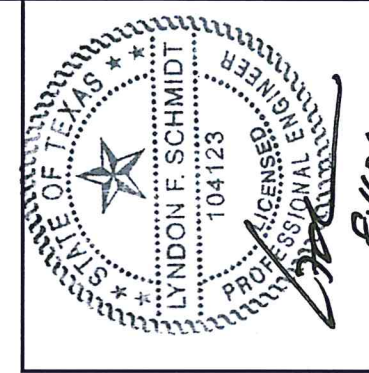
PART OR ASSEMBLY: SIDELITE PANEL
DETAILS AND GLAZING DETAILS

NO.	DATE	DESCRIPTION	BY
1	8/10/21	UPDATE TO 2018 IBC/IRC	LFS

DATE: 5/10/12
SCALE: N.T.S.
DWG. BY: JK
CHK. BY: LFS
DRAWING NO.: TX-4156
SHEET 4 OF 12



HARDWARE CHART	
MANUFACTURER	MODEL
KWIKSET	KNOB: KWIKSET SERIES (660) DEADBOLT: KWIKSET SERIES (660)
KWIKSET	KNOB: SIGNATURE SERIES (740) DEADBOLT: SIGNATURE SERIES (780)
KWIKSET	KNOB: SIGNATURE SERIES (740) DEADBOLT: SIGNATURE SERIES (980)



Documents Prepared By: Lyndon F. Schmidt, P.E.
TEXAS P.E. #104123

RW BUILDING CONSULTANTS, INC.
P.O. Box 230 Vairico FL, 33595
Phone No.: 813.659.9197
TEXAS BOARD OF PROFESSIONAL ENGINEERS
CERTIFICATE OF REGISTRATION # F-11852

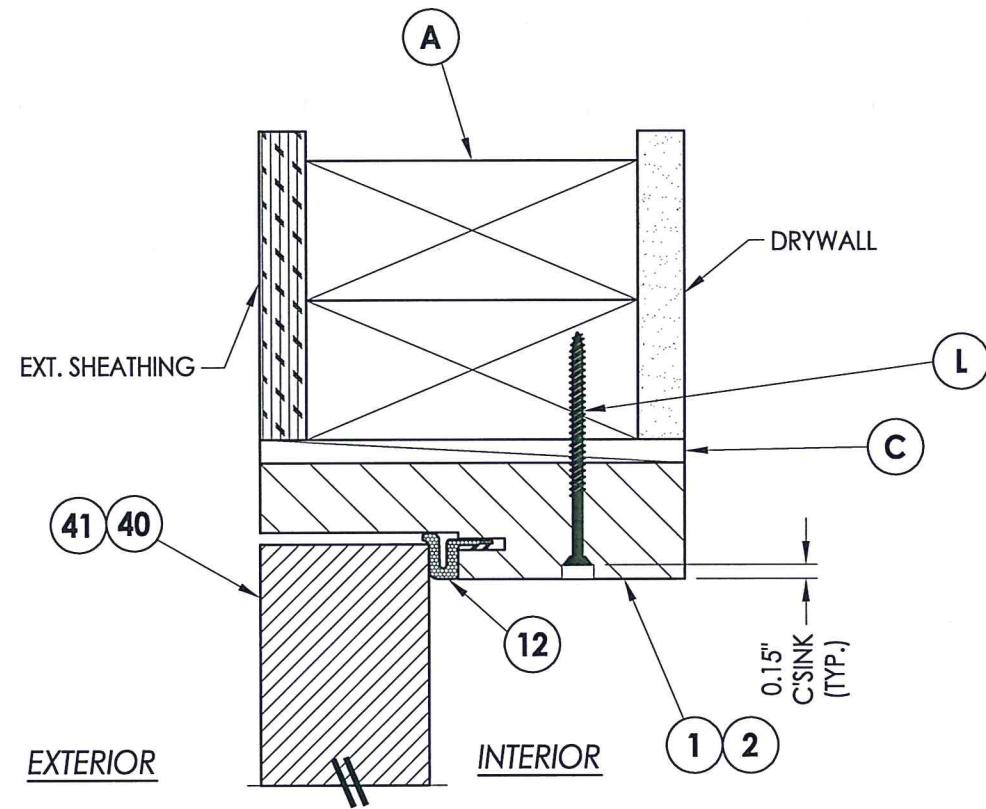
PRODUCT:	TRINITY GLASS INT'L	
PART OR ASSEMBLY:	ELEVATIONS	
DATE:	5/10/12	
SCALE:	N.T.S.	
DWG. BY:	JK	
CHK. BY:	LFS	
DRAWING NO.:	TX-4156	
SHEET	5 OF 12	
NO.	DATE	BY
1	8/10/21	LFS
REVISIONS		
UPDATE TO 2018 IBC/IRC		



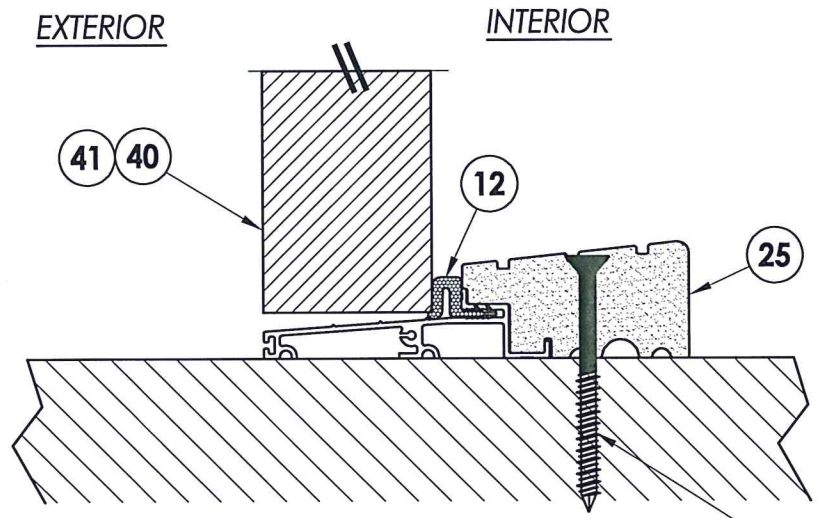
Documents Prepared By: Lyndon F. Schmidt, P.E.
 TEXAS P.E. #104123

RW BUILDING CONSULTANTS, INC.
 P.O. Box 230 Valrico FL 33595
 Phone No.: 813.659.9197

TEXAS BOARD OF PROFESSIONAL ENGINEERS
 CERTIFICATE OF REGISTRATION # F-11852

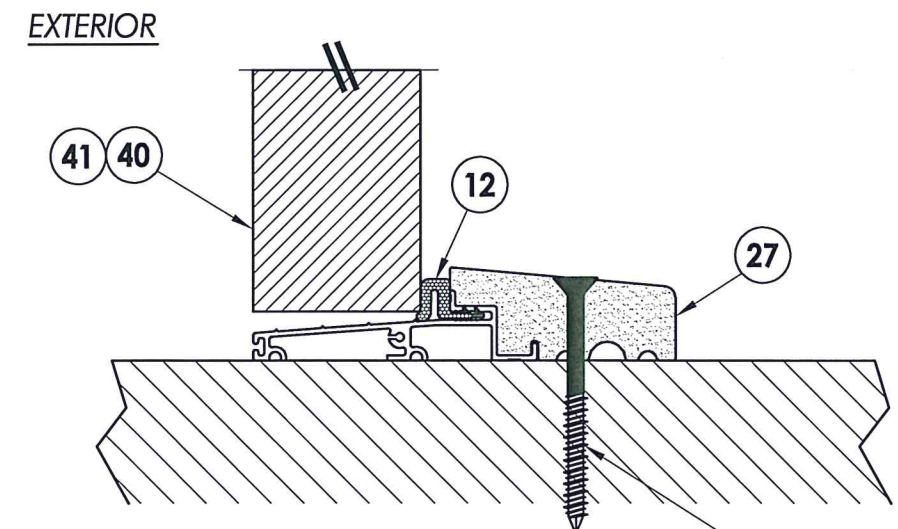


1
7 VERTICAL CROSS SECTION



2
7 VERTICAL CROSS SECTION
 Outswing sill - high dam

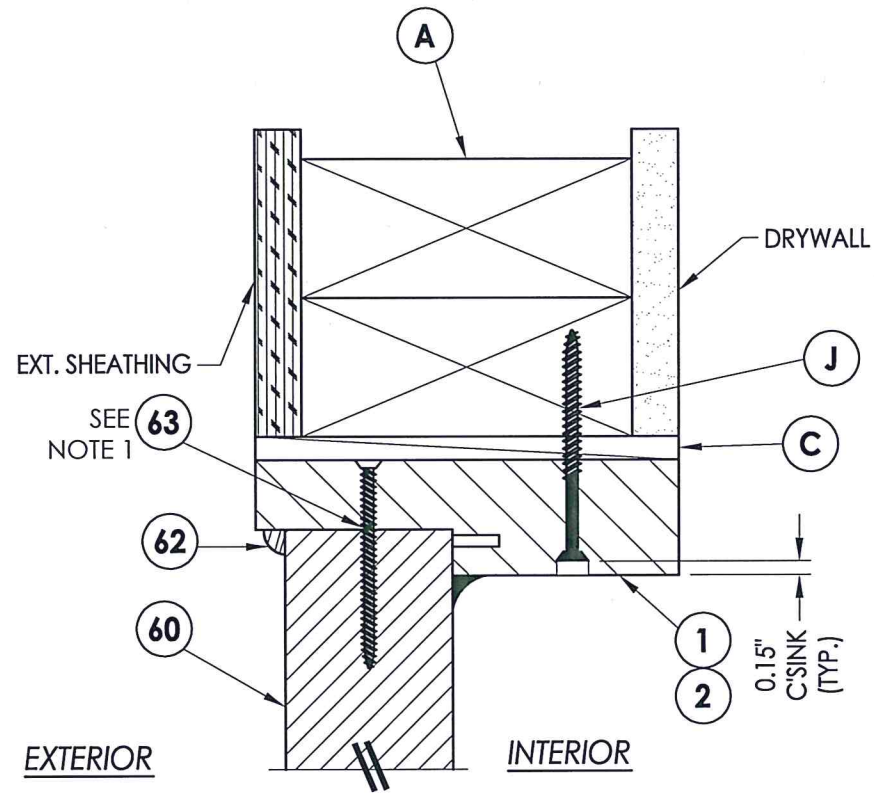
P WOOD
D CONCRETE



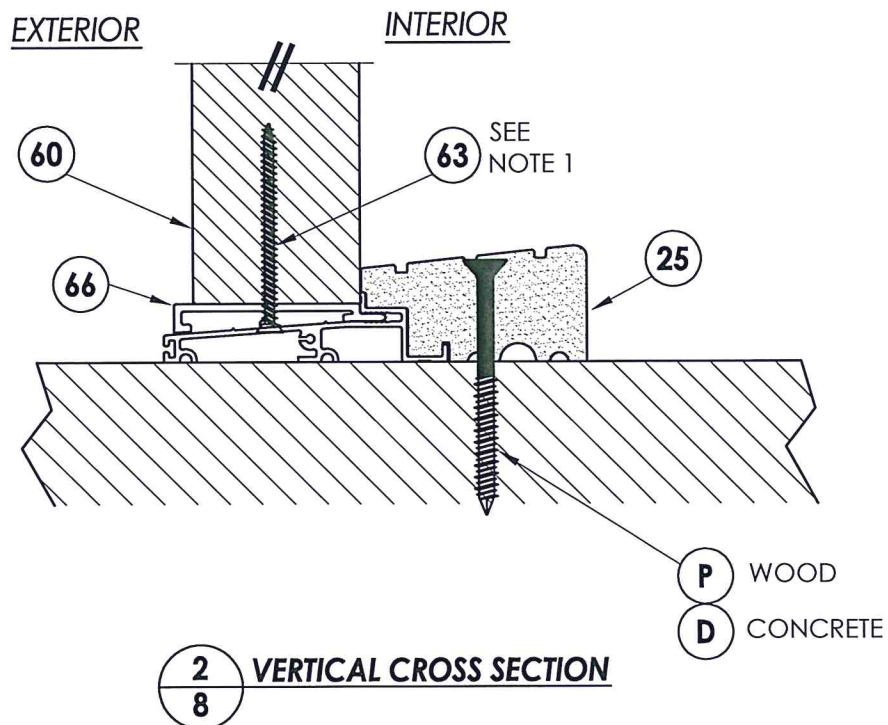
3
7 VERTICAL CROSS SECTION
 Outswing sill

P WOOD
D CONCRETE

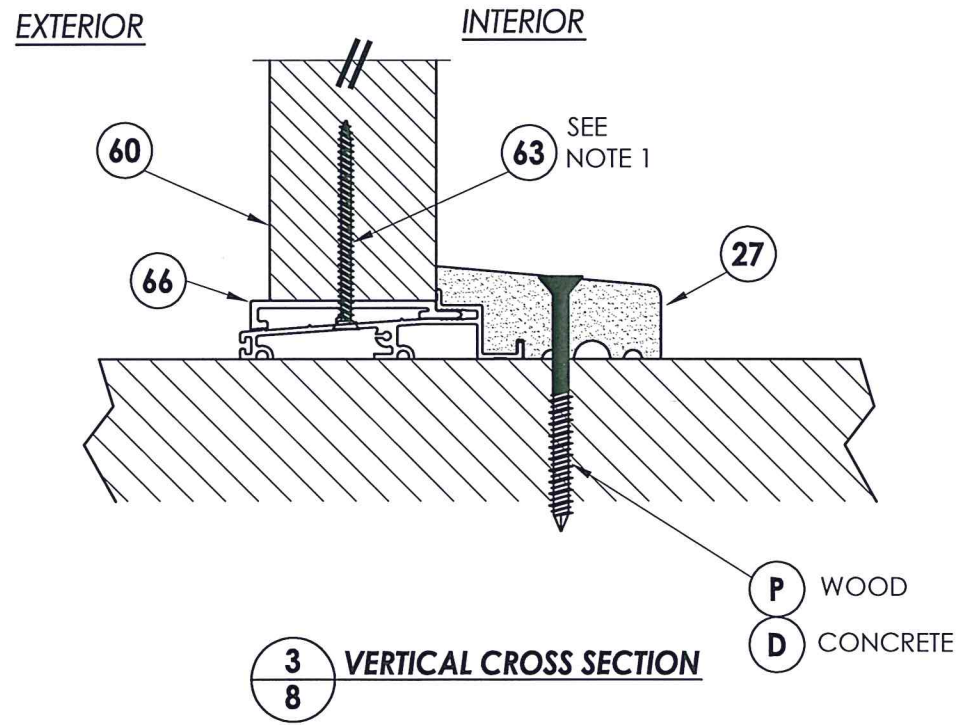
PRODUCT:	TRINITY GLASS INT'L	
PART OR ASSEMBLY:	VERTICAL CROSS SECTIONS	
NO.	DATE	BY
1	8/10/21	LFS
UPDATE TO 2018 IBC/IRC		
REVISIONS		
DATE:	5/10/12	
SCALE:	N.T.S.	
DWG. BY:	JK	
CHK. BY:	LFS	
DRAWING NO.:	TX-4156	
SHEET	7 of 12	



1
8 VERTICAL CROSS SECTION



2
8 VERTICAL CROSS SECTION



3
8 VERTICAL CROSS SECTION

NOTE:

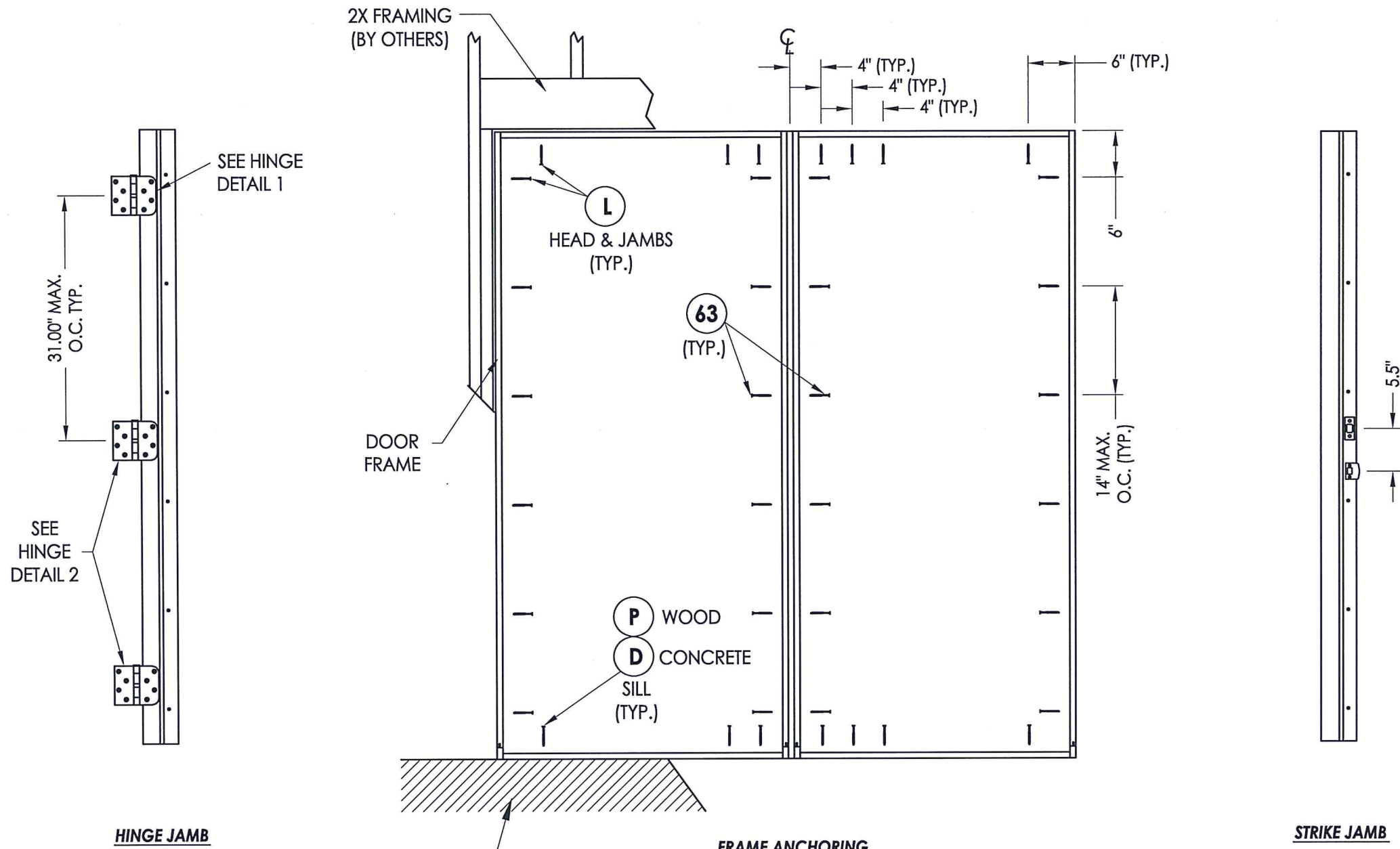
1. Screws thru head and sill jamb located 3" from each end and O.C. (TYP.) line.



Documents Prepared By: Lyndon F. Schmidt, P.E.
TEXAS P.E. #104123

RW BUILDING CONSULTANTS, INC.
P.O. Box 230 Valrico FL 33595
Phone No.: 813.659.9197
TEXAS BOARD OF PROFESSIONAL ENGINEERS
CERTIFICATE OF REGISTRATION # F-11852

PRODUCT:	TRINITY GLASS INT'L	
PART OR ASSEMBLY:	VERTICAL CROSS SECTIONS	
NO.	DATE	BY
1	8/10/21	LFS
UPDATE TO 2018 IBC/IRC		
REVISIONS		
DATE:	5/10/12	
SCALE:	N.T.S.	
DWG. BY:	JK	
CHK. BY:	LFS	
DRAWING NO.:	TX-4156	
SHEET	8	OF 12

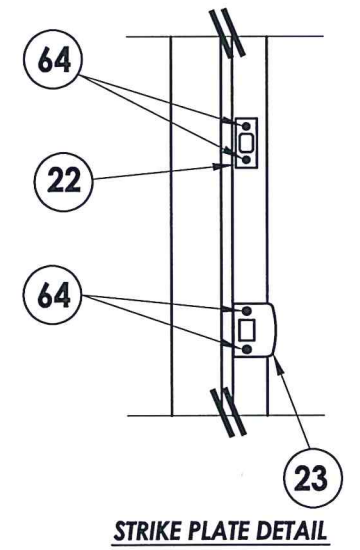


HINGE JAMB

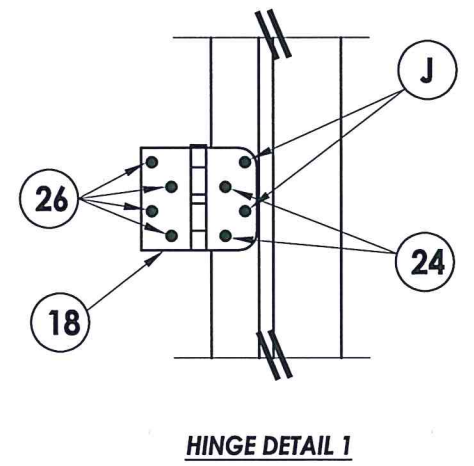
FRAME ANCHORING

STRIKE JAMB

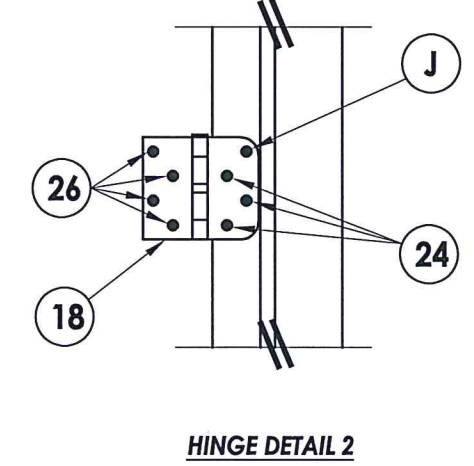
FLOOR SUBSTRATE MATERIAL (TYP.)
 CONCRETE (MIN. 3000 PSI)
 WOOD ($G \geq 0.42$)



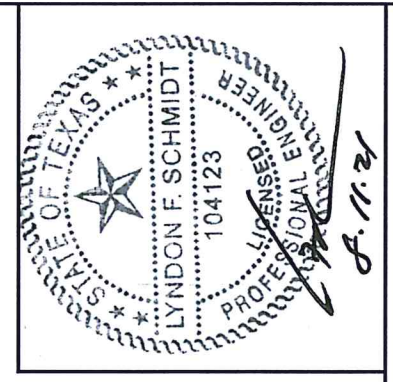
STRIKE PLATE DETAIL



HINGE DETAIL 1



HINGE DETAIL 2



Documents Prepared By: Lyndon F. Schmidt, P.E.
 TEXAS P.E. #104123

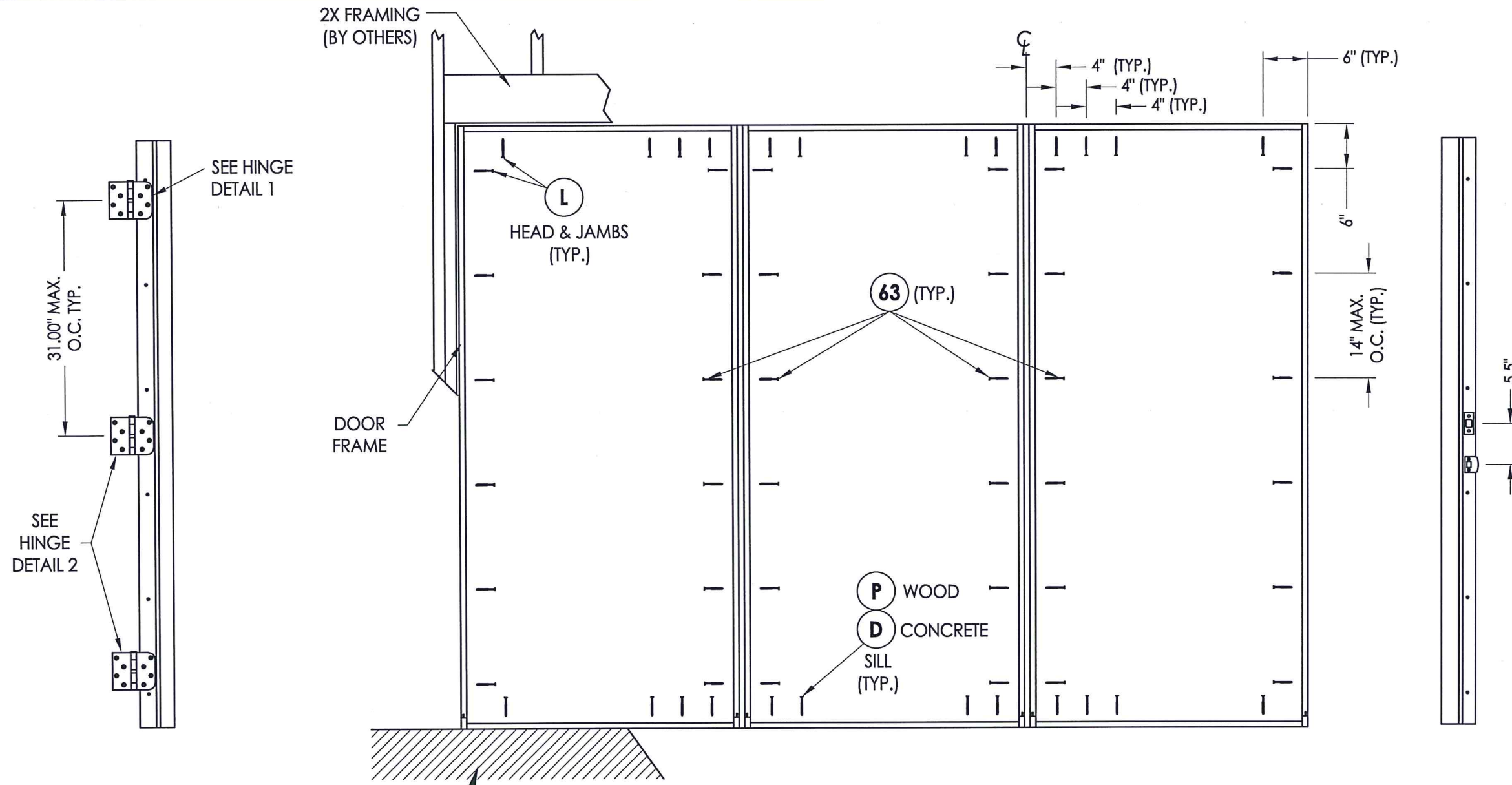
RW BUILDING CONSULTANTS, INC.
 P.O. Box 230 Valrico FL 33595
 Phone No.: 813.659.9197

TEXAS BOARD OF PROFESSIONAL ENGINEERS
 CERTIFICATE OF REGISTRATION # F-11852

PRODUCT:	TRINITY GLASS INT'L
PART OR ASSEMBLY:	FRAME ANCHORING (OX/XO)

NO.	DATE	DESCRIPTION	BY
1	8/10/21	UPDATE TO 2018 IBC/IRC	LFS
REVISIONS			

DATE: 5/10/12
 SCALE: N.T.S.
 DWG. BY: JK
 CHK. BY: LFS
 DRAWING NO.: TX-4156
 SHEET 9 OF 12

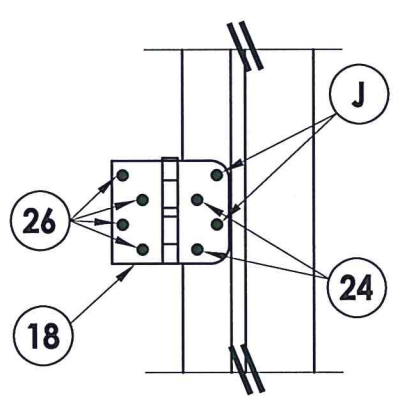


HINGE JAMB

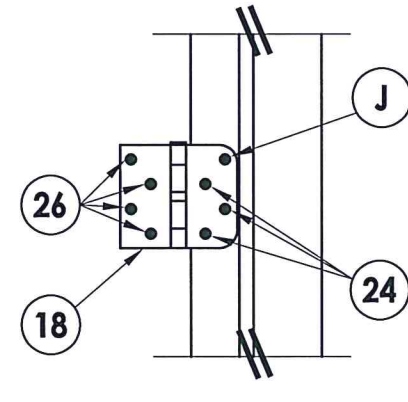
FRAME ANCHORING

STRIKE JAMB

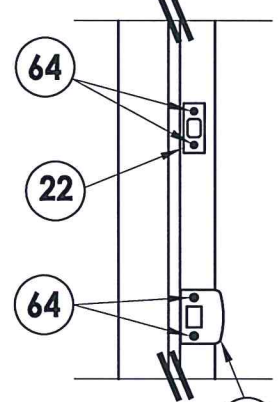
FLOOR SUBSTRATE MATERIAL (TYP.)
 CONCRETE (MIN. 3000 PSI)
 WOOD (G >= 0.42)



HINGE DETAIL 1



HINGE DETAIL 2



STRIKE PLATE DETAIL



Documents Prepared By: Lyndon F. Schmidt, P.E.
 TEXAS P.E. #104123

RW BUILDING CONSULTANTS, INC.
 P.O. Box 230 Vairico FL 33595
 Phone No.: 813.659.9197

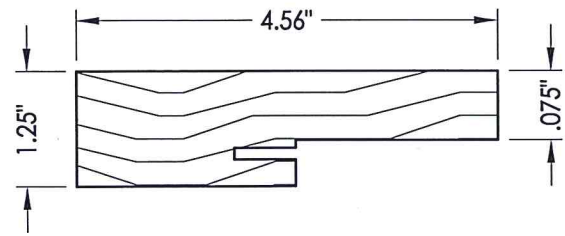
TEXAS BOARD OF PROFESSIONAL ENGINEERS
 CERTIFICATE OF REGISTRATION # F-11852

PRODUCT: TRINITY GLASS INT'L

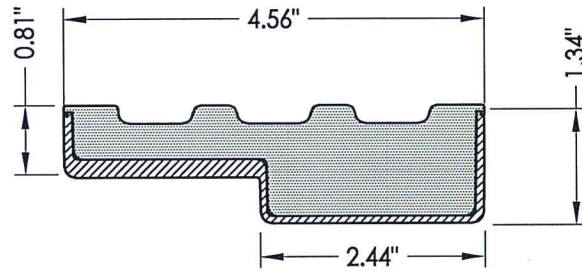
PART OR ASSEMBLY: FRAME ANCHORING (OXO)

NO.	DATE	BY
1	8/10/21	LFS
UPDATE TO 2018 IBC/IRC		
REVISIONS		

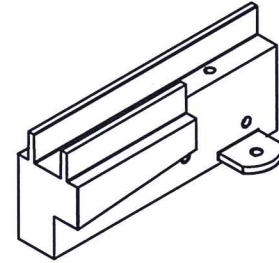
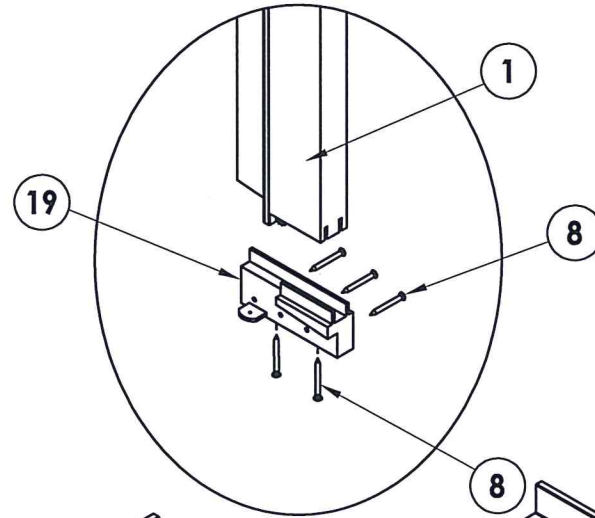
DATE: 5/10/12
 SCALE: N.T.S.
 DWG. BY: JK
 CHK. BY: LFS
 DRAWING NO.: TX-4156
 SHEET 10 OF 12



1 HEAD & JAMBS
Wood



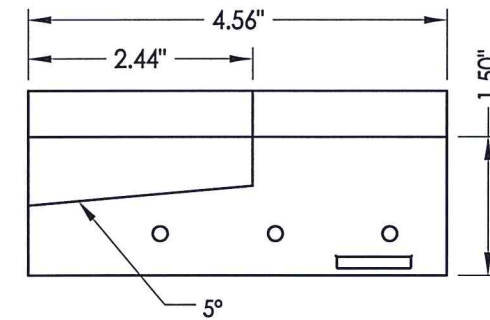
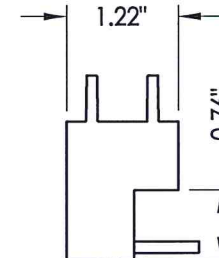
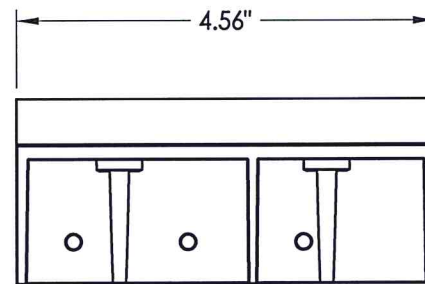
2 HEAD & JAMBS
Composite PVC Base
w/ Fiberglass Wrap



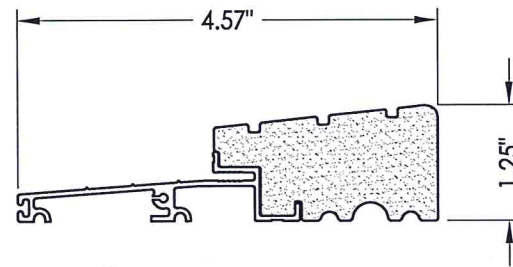
SILLKEY, LEFT
SCALE: NONE



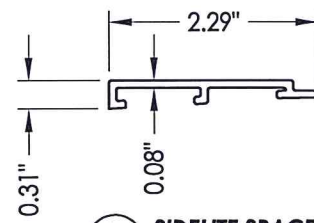
SILLKEY, RIGHT
SCALE: NONE



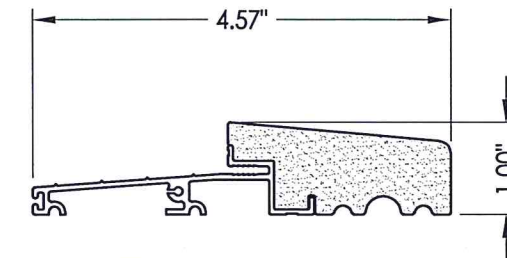
19 SILLKEY DETAILS
Optional



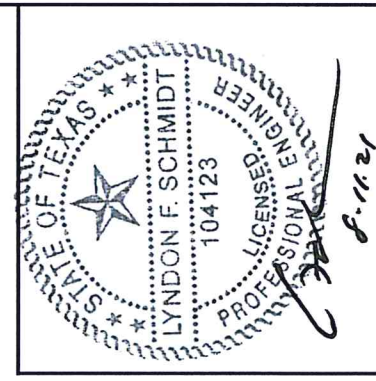
25 OUTSWING THRESHOLD
High-dam option



66 SIDELITE SPACER
Outswing



27 OUTSWING THRESHOLD



Documents Prepared By: Lyndon F. Schmidt, P.E.
TEXAS P.E. #104123

RW BUILDING CONSULTANTS, INC.
P.O. Box 230 Valrico FL 33595
Phone No.: 813.659.9197
TEXAS BOARD OF PROFESSIONAL ENGINEERS
CERTIFICATE OF REGISTRATION # F-11652

PRODUCT:	TRINITY GLASS INT'L
PART OR ASSEMBLY:	COMPONENTS

NO.	DATE	REVISIONS
1	8/10/21	UPDATE TO 2018 IBC/IRC
LFS		
BY		

DATE:	5/10/12
SCALE:	N.T.S.
DWG. BY:	JK
CHK. BY:	LFS
DRAWING NO.:	TX-4156
SHEET	11 OF 12

