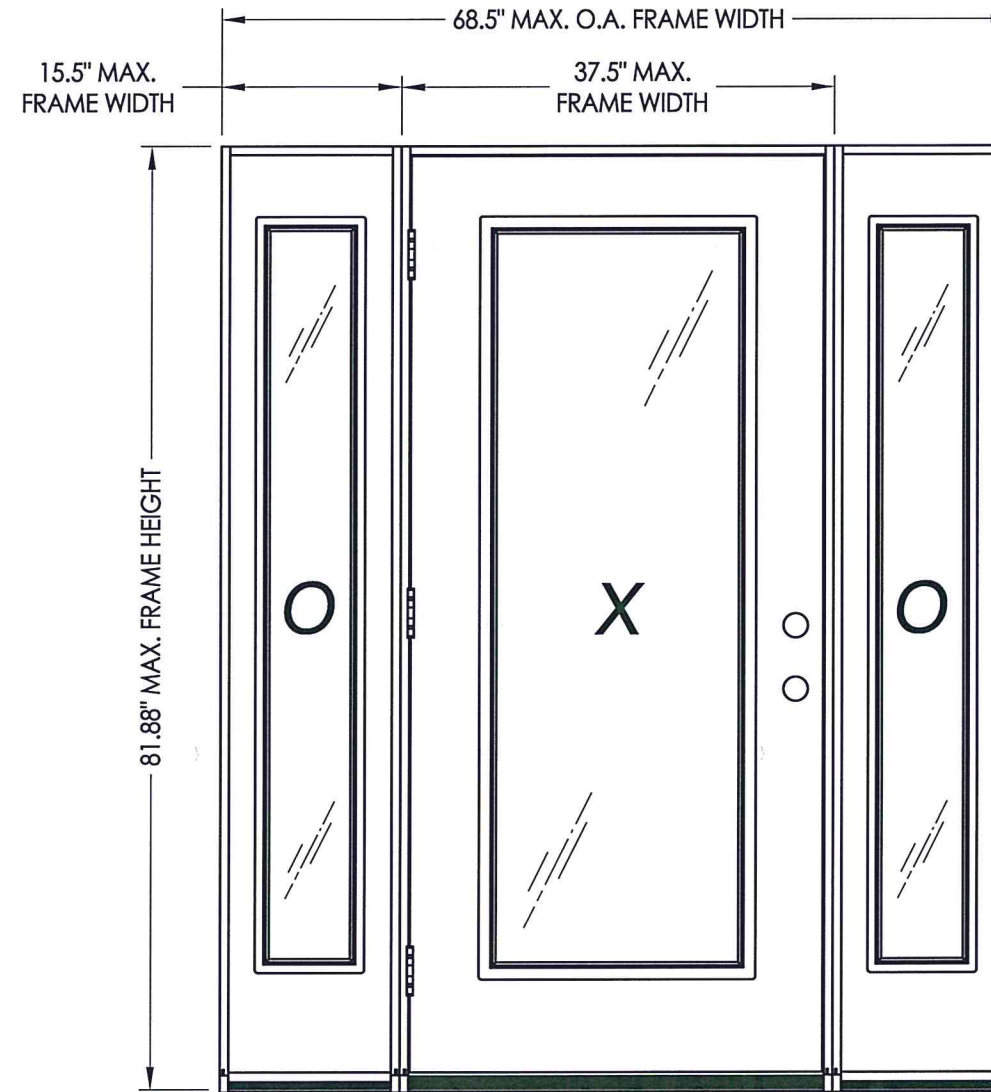


**TRINITY GLASS**  
INTERNATIONAL

33615 1st Way S, Federal Way, WA 98003

**3'0 X 6'8**  
**FLUSH GLAZED FIBERGLASS**  
**SINGLE DOOR WITH SIDELITES (BOXED)**  
**IN SWING / OUT SWING**  
**"NON-IMPACT"**



**SINGLE WITH BOXED SIDELITES**

**EVALUATED FOR USE IN THE STATE OF TEXAS**

The Fiberglass Door system described herein complies with the 2018 International Residential Code (IRC), Sections R301 & R609 and the 2018 International Building Code (IBC), Sections 1404.13, 1609, 1709.5, 2403 and 2404 subject to the following conditions:

1. Anchors shall be as listed and spaced as shown in the details. Anchor embedment to base material shall be beyond wall dressing or stucco.
2. When used in areas requiring wind-borne debris protection this product is required to be protected with an impact resistant covering that complies with Section R301.2.1.2 of the IRC and Section 1609.2 of the IBC.
3. Allowable design pressure requirements must be equal to or less than the design pressure rating shown in the design pressure chart, sheet 1 of this drawing.
4. Conditions not covered by this drawing are subject to further engineering analysis.

**TABLE OF CONTENTS**

SHEET #	DESCRIPTION
1	Typical elevations, design pressures & general notes
2	Door panel construction details & glazing details
3	Sidelite panel construction details & glazing details
4	Horizontal cross sections
5	Vertical cross sections
6	Vertical cross sections
7	Frame anchoring
8	Components
9	Bill of materials & components

SWING	MAX. FRAME DIMENSION	GLASS TYPE	DESIGN PRESSURE (PSF)	
			POSITIVE	NEGATIVE
IN SWING	68.50" x 81.88"	G1, G2 & G3	+55.0	-55.0
OUT SWING	68.50" x 80.75"		+55.0	-55.0

Refer to Table (sheet 4) for Passage Lock Rating Limitations



Documents Prepared By: Lyndon F. Schmidt, P.E.  
TEXAS P.E. #104123

**RW** BUILDING CONSULTANTS, INC.  
P.O. Box 230 Valrico FL, 33595  
Phone No.: 813.659.9197

TEXAS BOARD OF PROFESSIONAL ENGINEERS  
CERTIFICATE OF REGISTRATION # F-11852

PRODUCT: TRINITY GLASS INT'L  
6'8 FLUSH GLAZED

PART OR ASSEMBLY:  
TYPICAL ELEVATION, DESIGN PRESSURES & GENERAL NOTES

NO.	DATE	REVISIONS
3	2/03/20	UPDATE TO 2018 IRC/IRC LFS
2	7/27/09	TDI PRODUCT EVALUATION UPDATE AL
1	6/28/06	REVISED LOCKSET NOMENCLATURE EW

DATE: 8/29/05

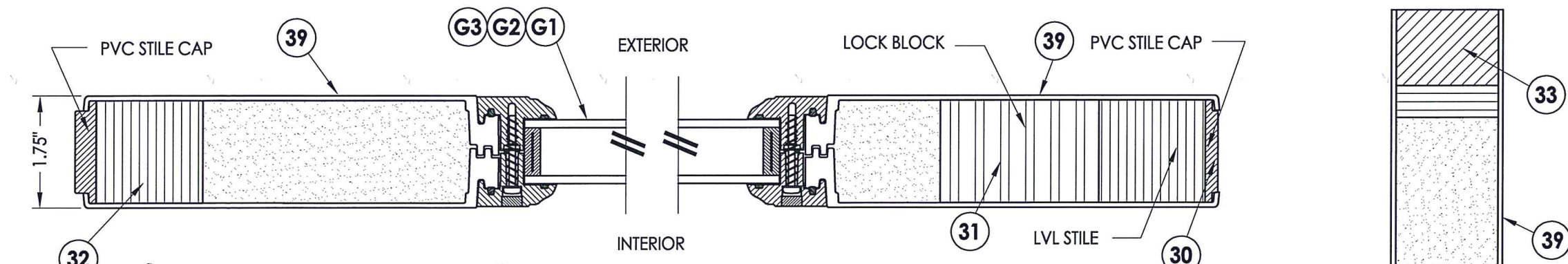
SCALE: N.T.S.

DWG. BY: WH

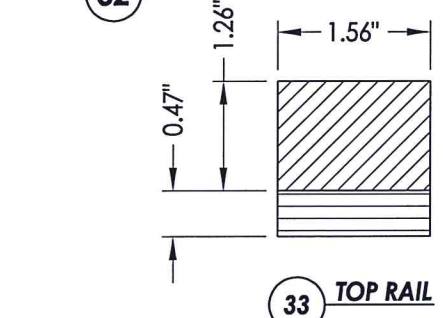
CHK. BY: LFS

DRAWING NO.: TX-4037

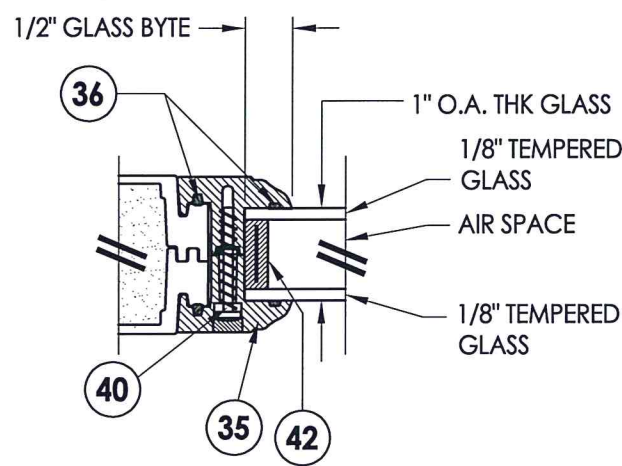
SHEET 1 OF 9



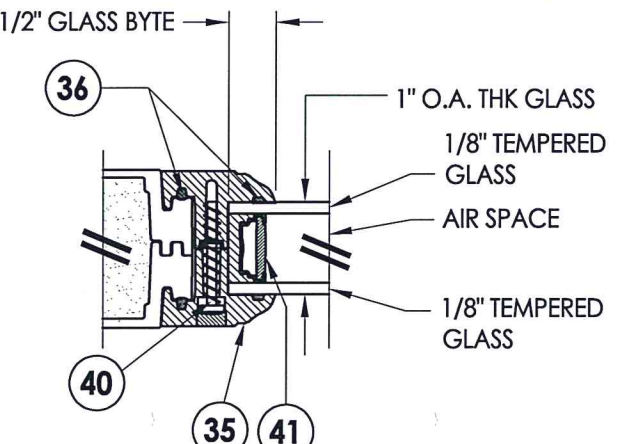
**1 HORIZONTAL CROSS SECTION**



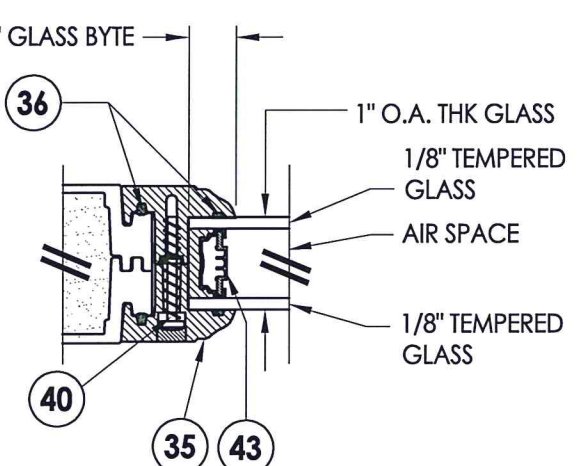
**33 TOP RAIL**



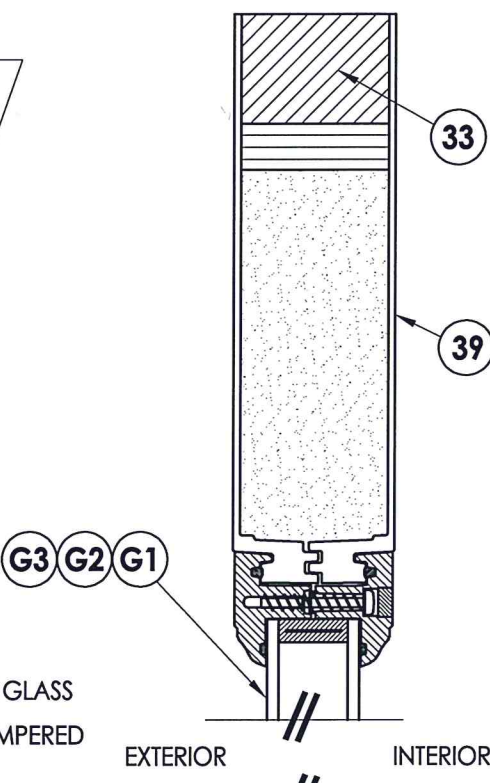
**G1 GLAZING DETAIL**



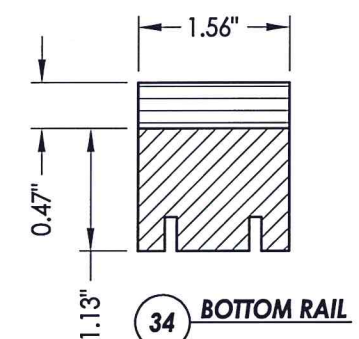
**G2 GLAZING DETAIL**



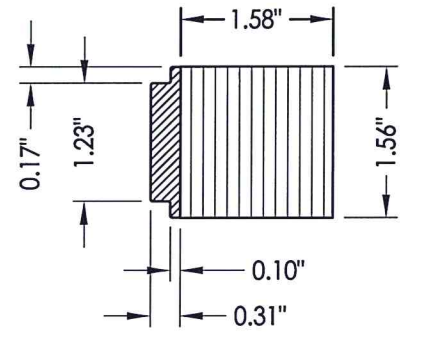
**G3 GLAZING DETAIL**



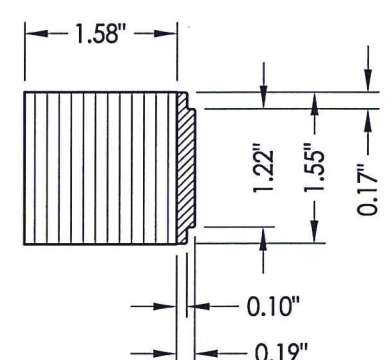
**2 VERTICAL CROSS SECTION**



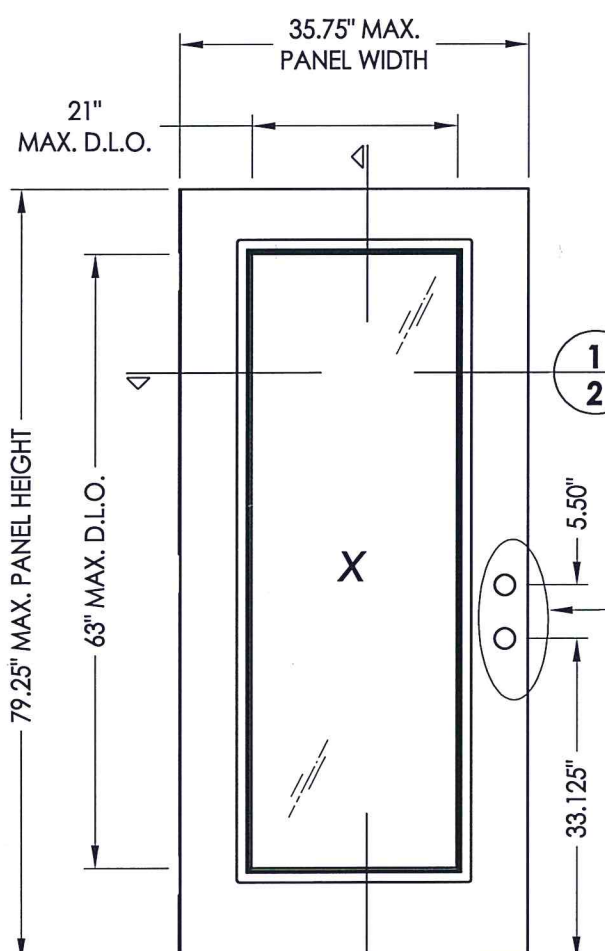
**34 BOTTOM RAIL**



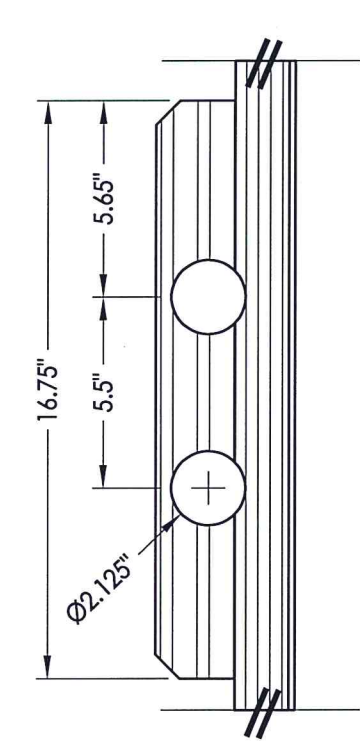
**32 HINGE STILE**



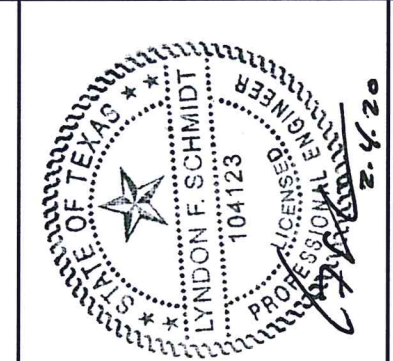
**30 LATCH STILE**



**2 FLUSH GLAZED DOOR**



**DETAIL 1**



Documents Prepared By: Lyndon F. Schmidt, P.E.  
TEXAS P.E. #104123

**RW** BUILDING CONSULTANTS, INC.  
P.O. Box 230 Valrico FL, 33595  
Phone No.: 813.659.9197

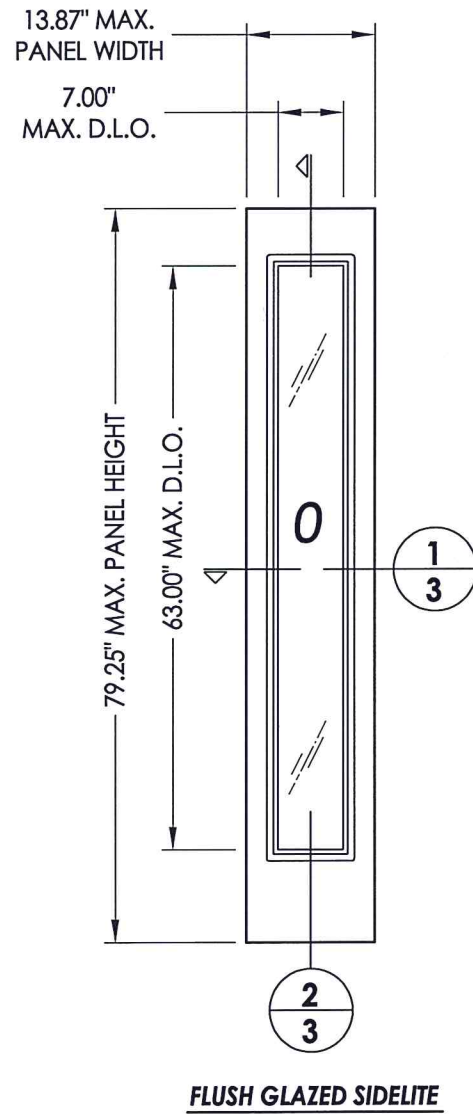
TEXAS BOARD OF PROFESSIONAL ENGINEERS  
CERTIFICATE OF REGISTRATION # F-11852

PRODUCT: TRINITY GLASS INT'L  
6 8 FLUSH GLAZED

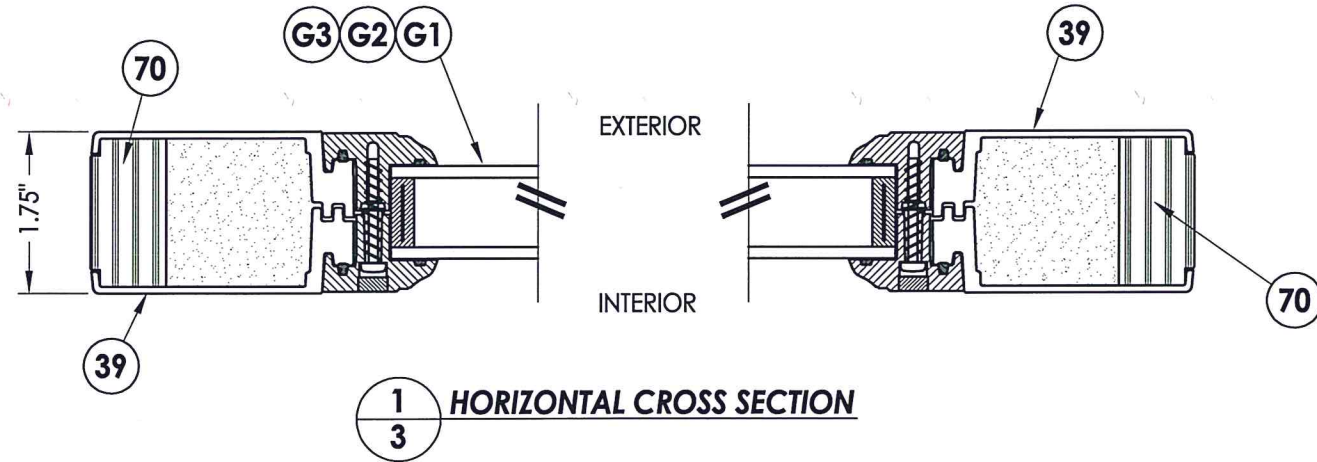
PART OR ASSEMBLY:  
DOOR PANEL CONSTRUCTION  
DETAILS & GLAZING DETAILS

NO.	DATE	REVISIONS
3	2/03/20	UPDATE TO 2018 IBC/IRC
2	7/27/09	TDI PRODUCT EVALUATION UPDATE
1	6/28/06	REVISED LOCKSET NOMENCLATURE

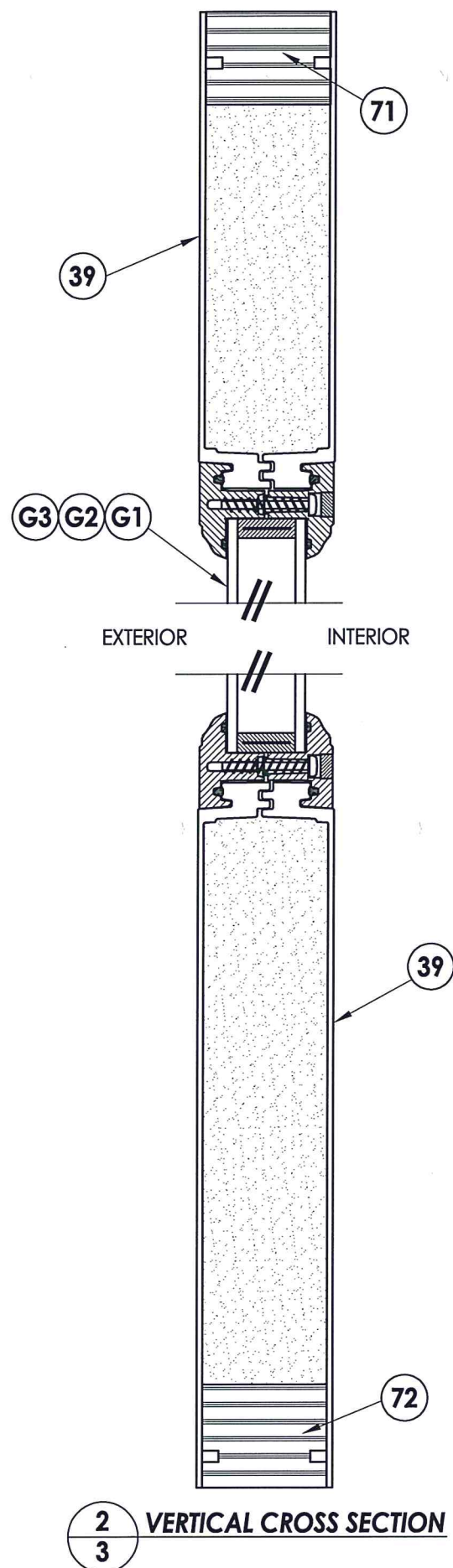
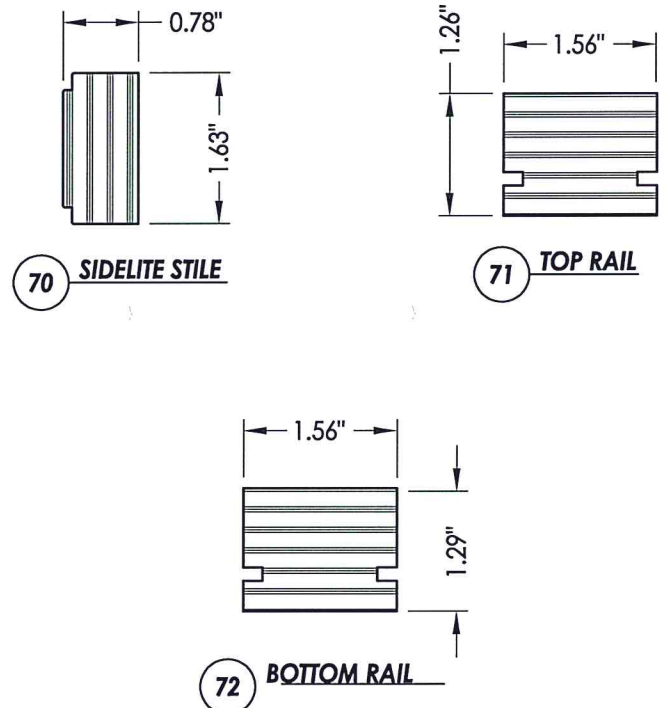
DATE: 8/29/05  
SCALE: N.T.S.  
DWG. BY: WH  
CHK. BY: LFS  
DRAWING NO.: TX-4037  
SHEET 2 OF 9



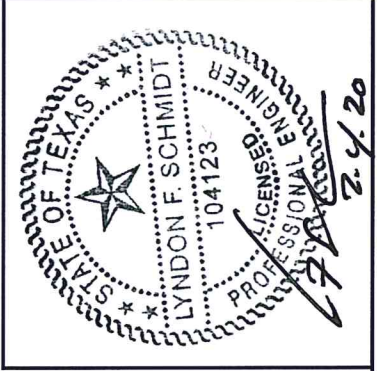
**FLUSH GLAZED SIDELITE**



**1  
3 HORIZONTAL CROSS SECTION**



**2  
3 VERTICAL CROSS SECTION**



Documents Prepared By: Lyndon F. Schmidt, P.E.  
TEXAS P.E. #104123

**RW** BUILDING CONSULTANTS, INC.  
P.O. Box 230 Valrico FL, 33595  
Phone No.: 813.659.9197

TEXAS BOARD OF PROFESSIONAL ENGINEERS  
CERTIFICATE OF REGISTRATION # F-11852

PRODUCT: TRINITY GLASS INT'L  
6 8 FLUSH GLAZED

PART OR ASSEMBLY:  
SIDELITE PANEL CONSTRUCTION  
DETAILS & GLAZING DETAILS

NO.	DATE	REVISIONS
3	2/03/20	UPDATE TO 2018 IBC/IRC
2	7/27/09	TDI PRODUCT EVALUATION UPDATE
1	6/28/06	REVISED LOCKSET NOMENCLATURE

DATE: 8/29/05

SCALE: N.T.S.

DWG. BY: WH

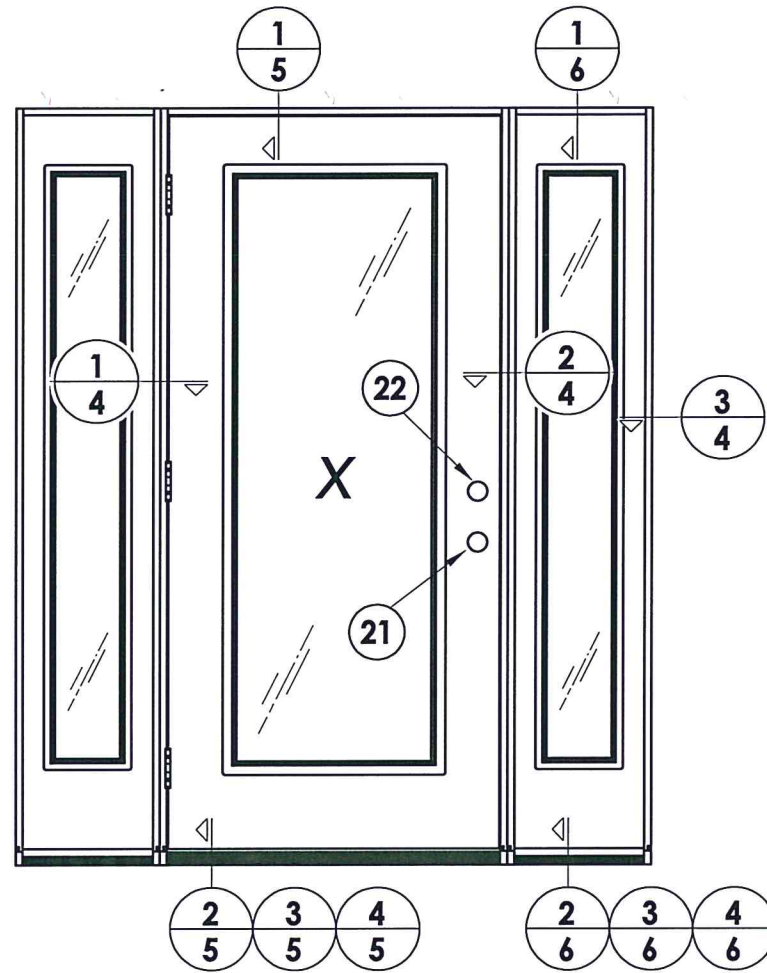
CHK. BY: LFS

DRAWING NO.: TX-4037

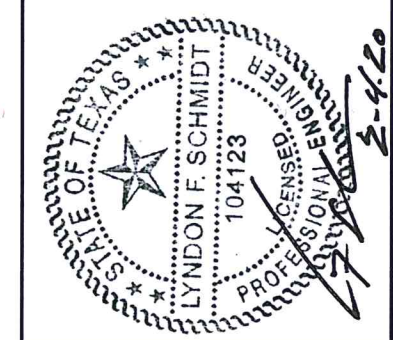
SHEET 3 OF 9

**NOTE:**

- Sidelite ass'y fastener: 6" from each end and 4 more screws equally spaced between (6 screws total per jamb).



LOCK & DEADBOLT RATINGS CHART				
MANUFACTURER	MODEL	ITEM #	MAX. DESIGN PRESSURE (PSF)	
			POSITIVE	NEGATIVE
KWIKSET	LOCK: 740	21	+55.0	-55.0
	DEADBOLT: 780	22		
KWIKSET	LOCK: COMBO 660	21	+55.0	-55.0
	DEADBOLT: COMBO 660	22		
SCHLAGE	LOCK: MAX. SECURITY	21	+55.0	-55.0
	DEADBOLT: MAX. SECURITY	22		



Documents Prepared By: Lyndon F. Schmidt, P.E.  
TEXAS P.E. #104123

**RW** BUILDING CONSULTANTS, INC.  
P.O. Box 230 Valrico FL 33595  
Phone No.: 813.659.9197

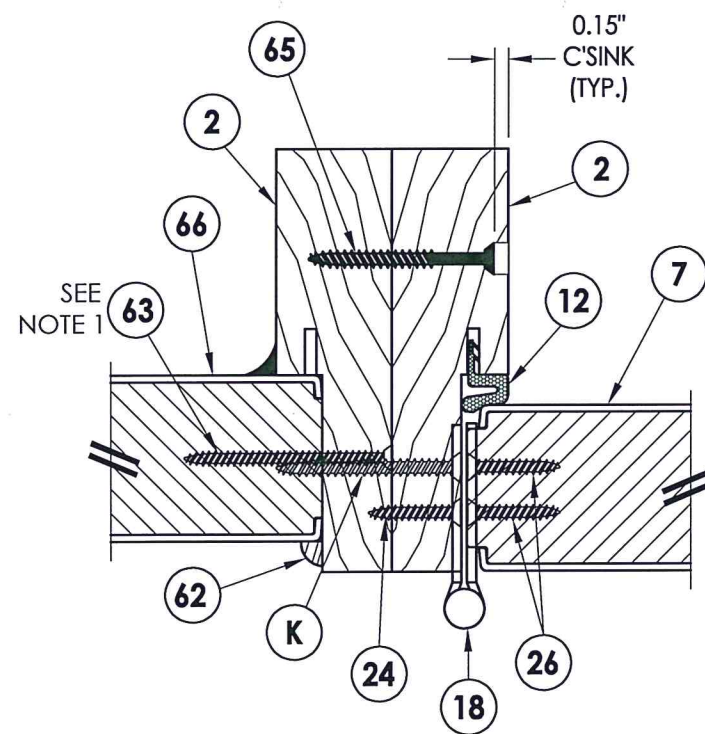
TEXAS BOARD OF PROFESSIONAL ENGINEERS  
CERTIFICATE OF REGISTRATION # F-11852

PRODUCT: TRINITY GLASS INT'L  
6"8 FLUSH GLAZED

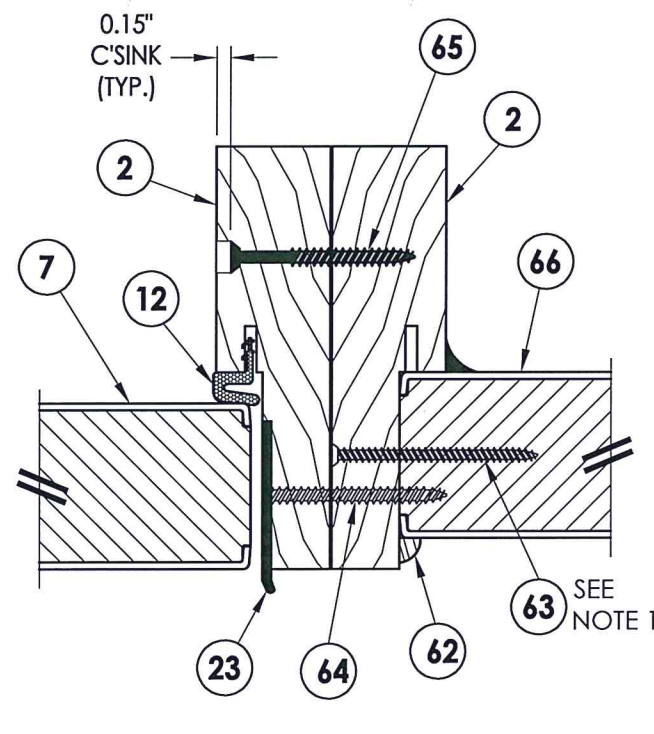
PART OR ASSEMBLY: HORIZONTAL CROSS SECTIONS

NO.	DATE	REVISIONS
3	2/03/20	UPDATE TO 2018 IBC/IRC
2	7/27/09	TDI PRODUCT EVALUATION UPDATE
1	6/28/06	REVISED LOCKSET NOMENCLATURE

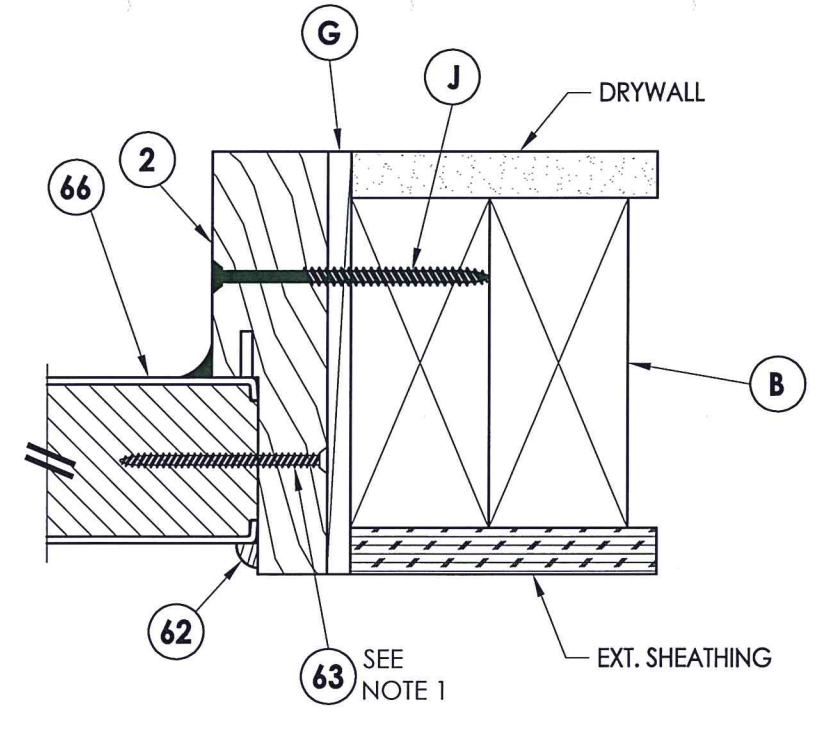
DATE: 8/29/05  
SCALE: N.T.S.  
DWG. BY: WH  
CHK. BY: LFS  
DRAWING NO.: TX-4037  
SHEET 4 OF 9



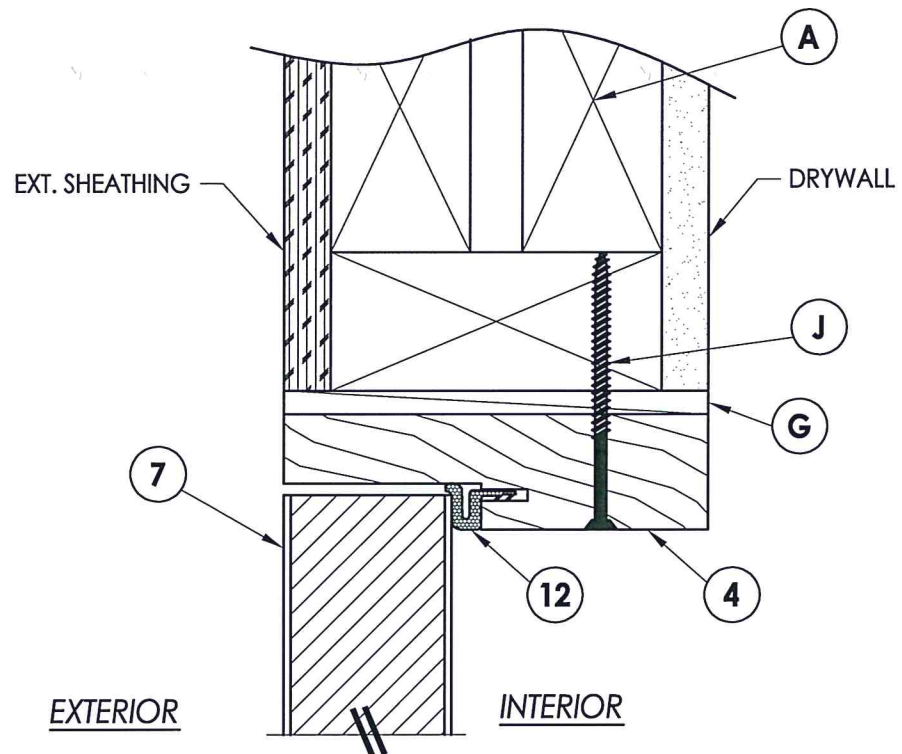
**1** HORIZONTAL CROSS SECTION  
**4** Outswing shown  
Inswing also approved



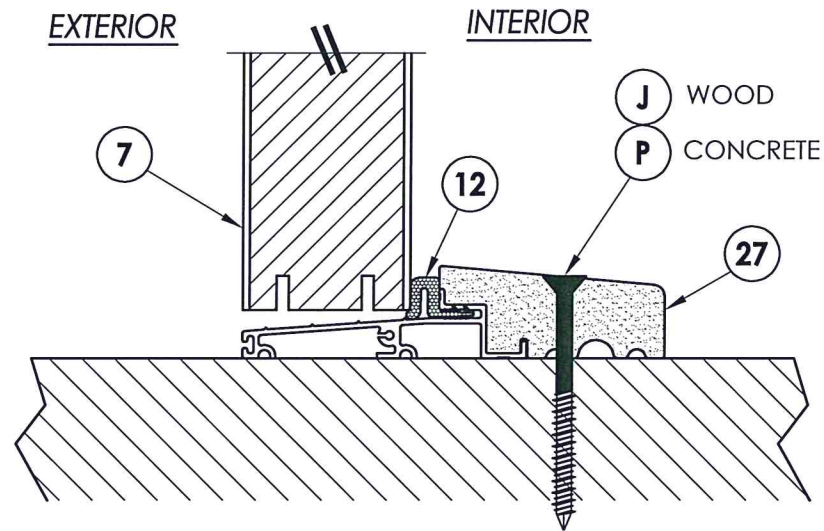
**2** HORIZONTAL CROSS SECTION  
**4** Outswing shown  
Inswing also approved



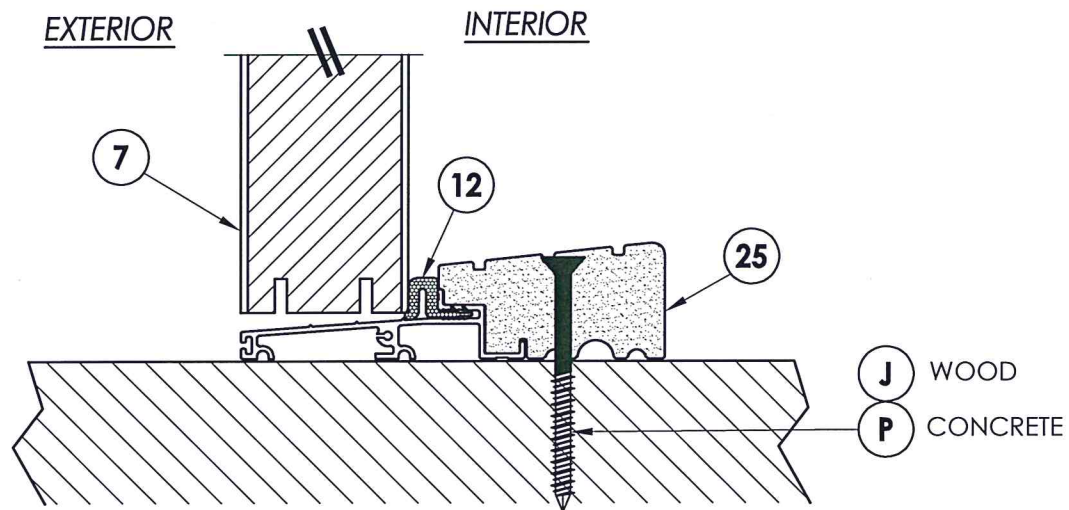
**3** HORIZONTAL CROSS SECTION  
**4** Outswing shown  
Inswing also approved



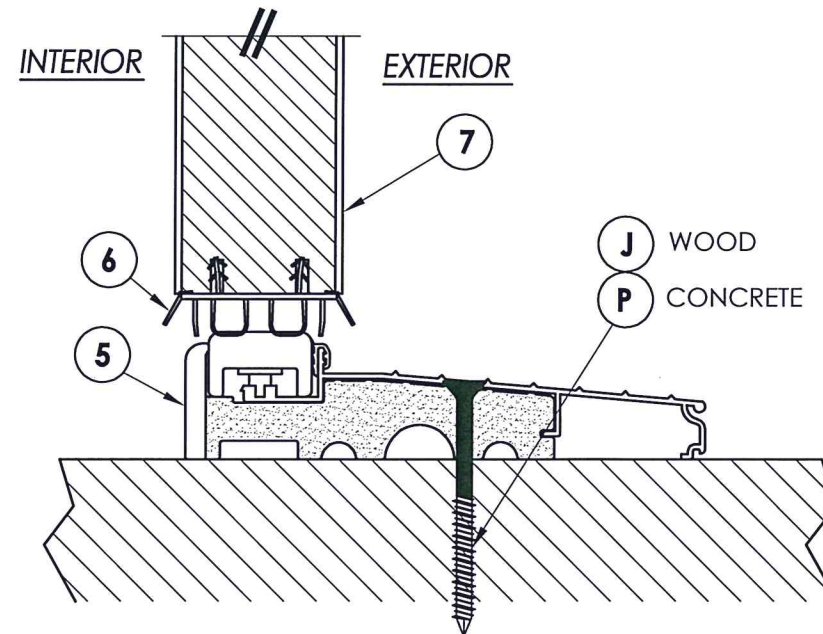
**1 VERTICAL CROSS SECTION**  
**5** Outswing shown  
 Inswing also approved



**2 VERTICAL CROSS SECTION**  
**5** Outswing configuration



**3 VERTICAL CROSS SECTION**  
**5** Outswing configuration



**4 VERTICAL CROSS SECTION**  
**5** Inswing configuration



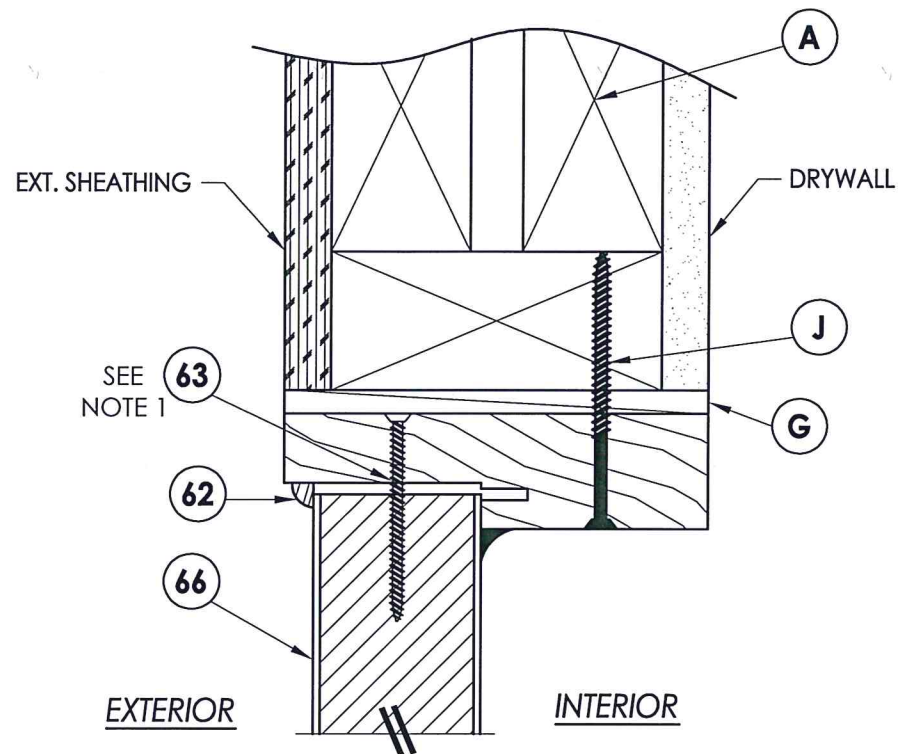
Documents Prepared By: Lyndon F. Schmidt, P.E.  
 TEXAS P.E. #104123

**RW** BUILDING CONSULTANTS, INC.  
 P.O. Box 230 Valrico FL, 33595  
 Phone No.: 813.659.9197  
 TEXAS BOARD OF PROFESSIONAL ENGINEERS  
 CERTIFICATE OF REGISTRATION # F-11852

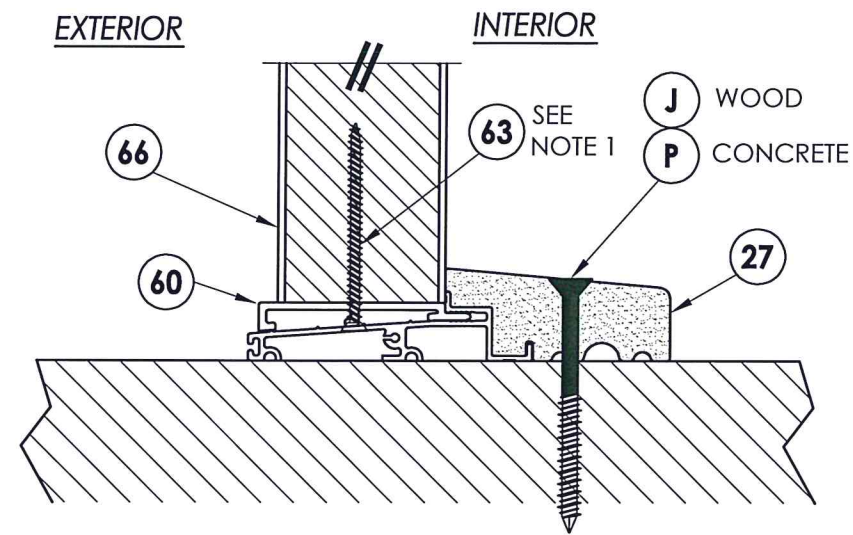
PRODUCT: TRINITY GLASS INT'L  
 6'8 FLUSH GLAZED  
 PART OR ASSEMBLY:  
 VERTICAL CROSS SECTIONS

NO.	DATE	REVISIONS
3	2/03/20	UPDATE TO 2018 IBC/IRC
2	7/27/09	TDI PRODUCT EVALUATION UPDATE
1	6/28/06	REVISED LOCKSET NOMENCLATURE
		EW
		BY

DATE: 8/29/05  
 SCALE: N.T.S.  
 DWG. BY: WH  
 CHK. BY: LFS  
 DRAWING NO.: TX-4037  
 SHEET 5 OF 9



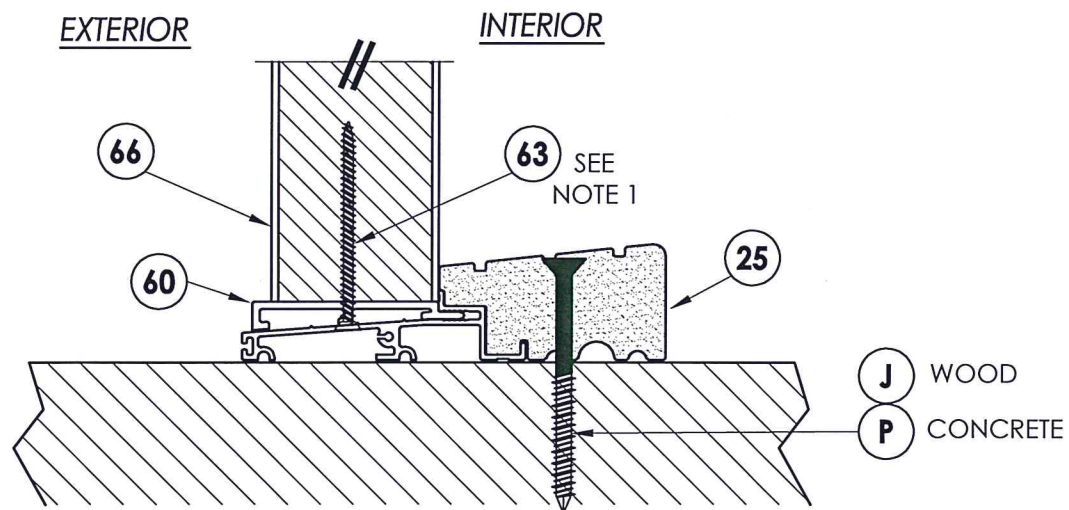
**1 VERTICAL CROSS SECTION**  
 6 Outswing shown  
 Inswing also approved



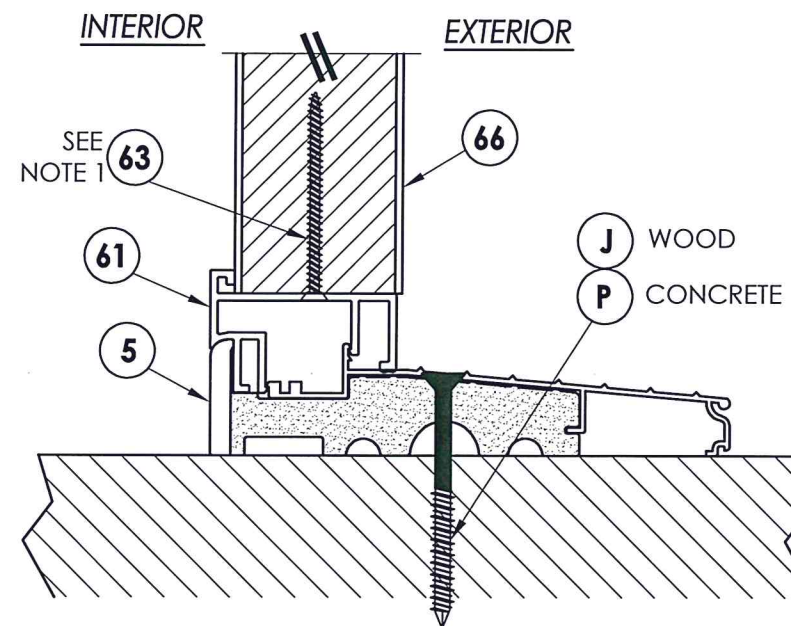
**2 VERTICAL CROSS SECTION**  
 6 Outswing configuration

**NOTE:**

1. Screws thru head and sill jamb located 3" from each end and on center line.



**3 VERTICAL CROSS SECTION**  
 6 Outswing configuration



**4 VERTICAL CROSS SECTION**  
 6 Inswing configuration



Documents Prepared By: Lyndon F. Schmidt, P.E.  
 TEXAS P.E. #104123

**RW** BUILDING CONSULTANTS, INC.  
 P.O. Box 230 Valrico FL 33595  
 Phone No.: 813.659.9197

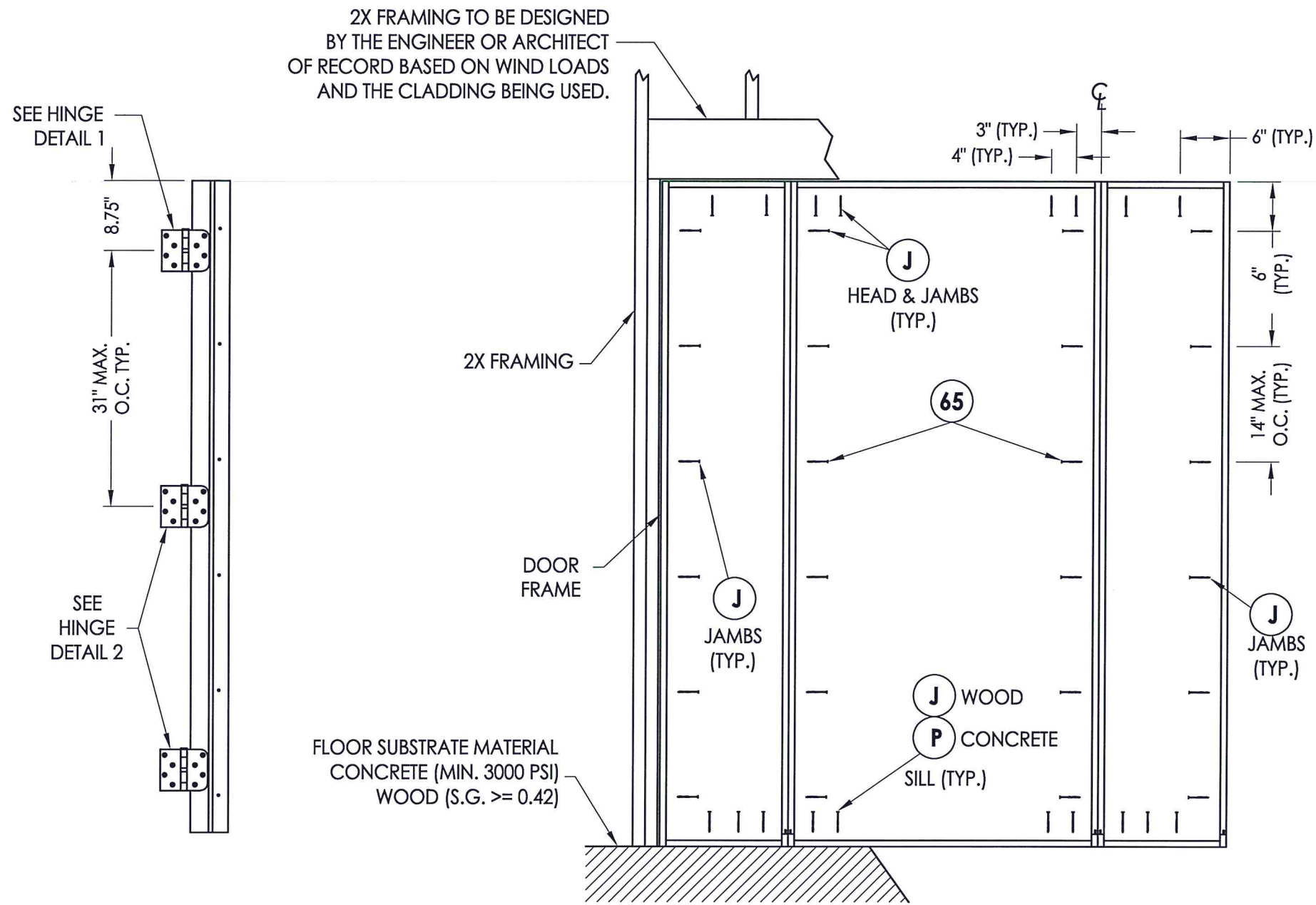
TEXAS BOARD OF PROFESSIONAL ENGINEERS  
 CERTIFICATE OF REGISTRATION # F-11852

PRODUCT: TRINITY GLASS INT'L  
 6"8 FLUSH GLAZED

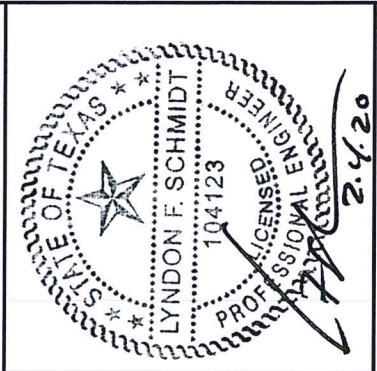
PART OR ASSEMBLY: VERTICAL CROSS SECTIONS

NO.	DATE	REVISIONS
3	2/03/20	UPDATE TO 2018 IBC/IRC
2	7/27/09	TDI PRODUCT EVALUATION UPDATE
1	6/28/06	REVISED LOCKSET NOMENCLATURE

DATE: 8/29/05  
 SCALE: N.T.S.  
 DWG. BY: WH  
 CHK. BY: LFS  
 DRAWING NO.: TX-4037  
 SHEET 6 OF 9



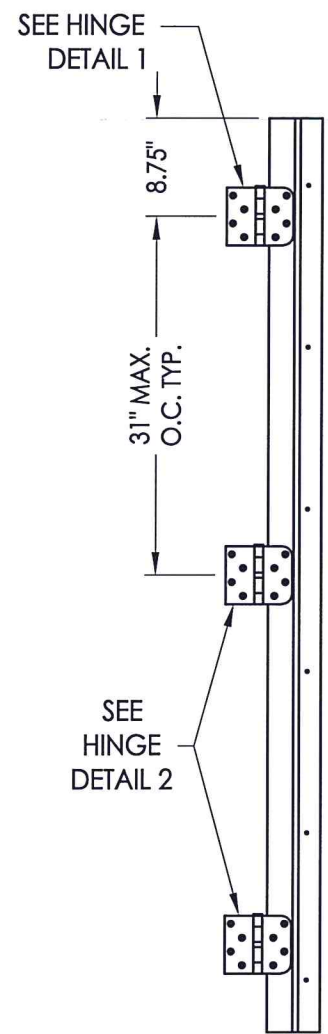
2X FRAMING TO BE DESIGNED BY THE ENGINEER OR ARCHITECT OF RECORD BASED ON WIND LOADS AND THE CLADDING BEING USED.



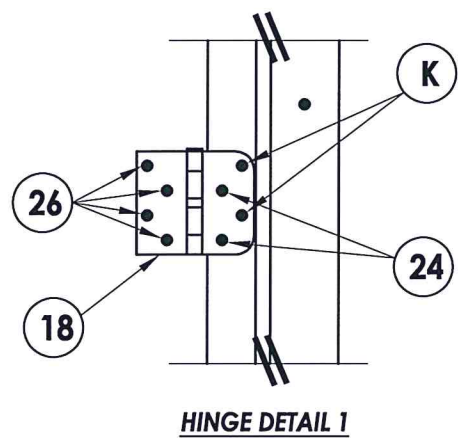
Documents Prepared By: Lyndon F. Schmidt, P.E.  
TEXAS P.E. #104123

**RW** BUILDING CONSULTANTS, INC.  
P.O. Box 230 Vairico FL 33595  
Phone No.: 813.659.9197

TEXAS BOARD OF PROFESSIONAL ENGINEERS  
CERTIFICATE OF REGISTRATION # F-11852



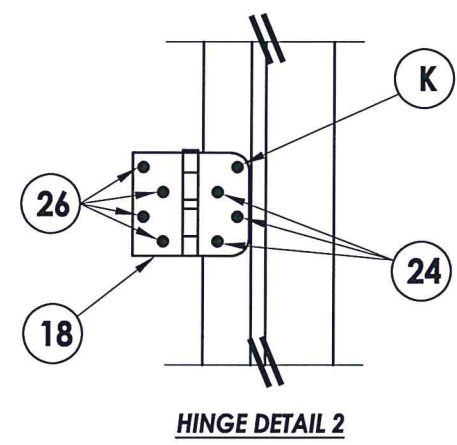
**HINGE JAMB**



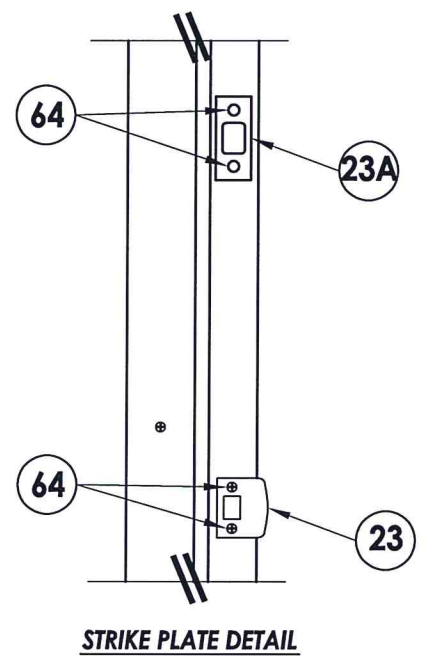
**HINGE DETAIL 1**

**FRAME ANCHORING**  
Stud construction

**STRIKE JAMB**



**HINGE DETAIL 2**



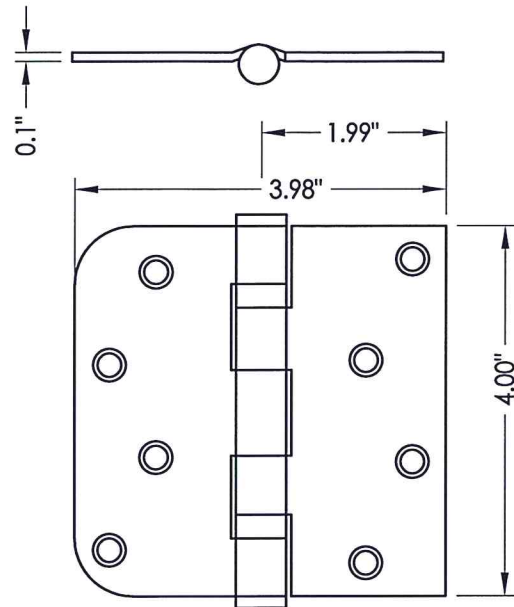
**STRIKE PLATE DETAIL**

PRODUCT: TRINITY GLASS INT'L  
6 8 FLUSH GLAZED

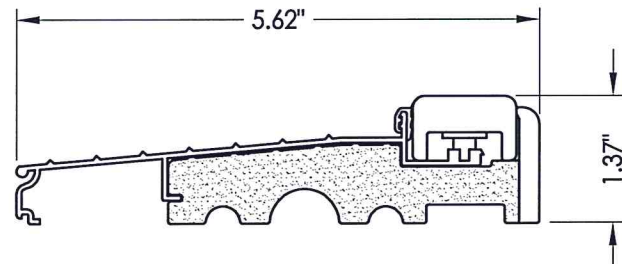
PART OR ASSEMBLY: FRAME ANCHORING

NO.	DATE	REVISIONS
3	2/03/20	UPDATE TO 2018 IBC/IRC
2	7/27/09	TDI PRODUCT EVALUATION UPDATE
1	6/28/06	REVISED LOCKSET NOMENCLATURE
		EW
		BY

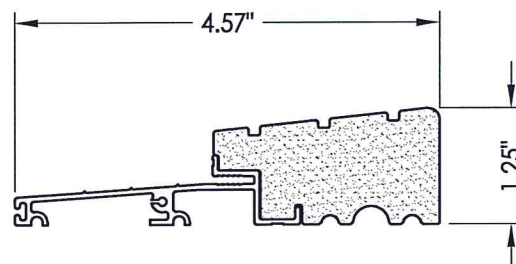
DATE: 8/29/05  
SCALE: N.T.S.  
DWG. BY: WH  
CHK. BY: LFS  
DRAWING NO.: TX-4037  
SHEET 7 OF 9



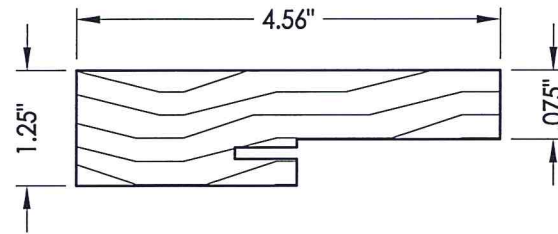
18 HINGE



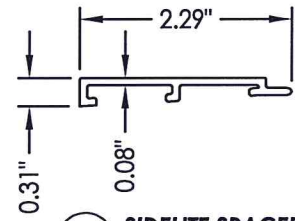
5 INSWING THRESHOLD



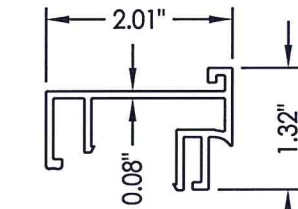
25 OUTSWING THRESHOLD  
High-dam option



4 3 2 SIDE & HEAD JAMBS



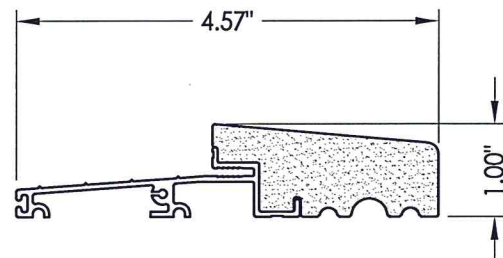
60 SIDELITE SPACER  
Outswing



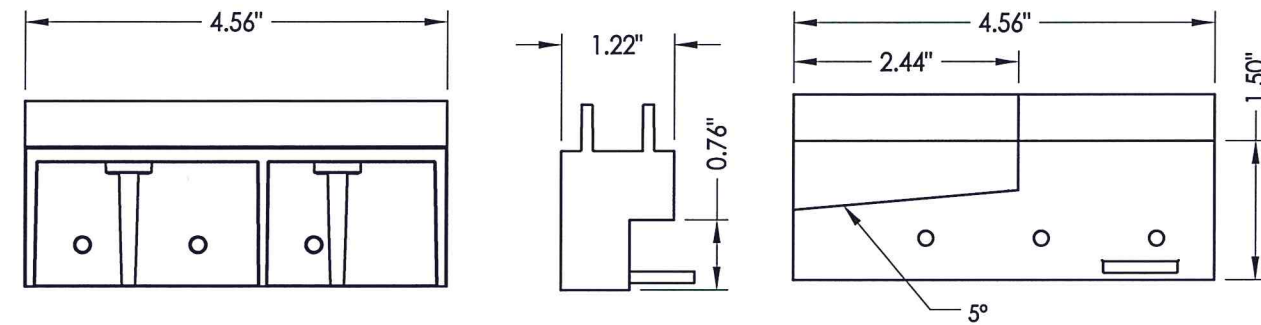
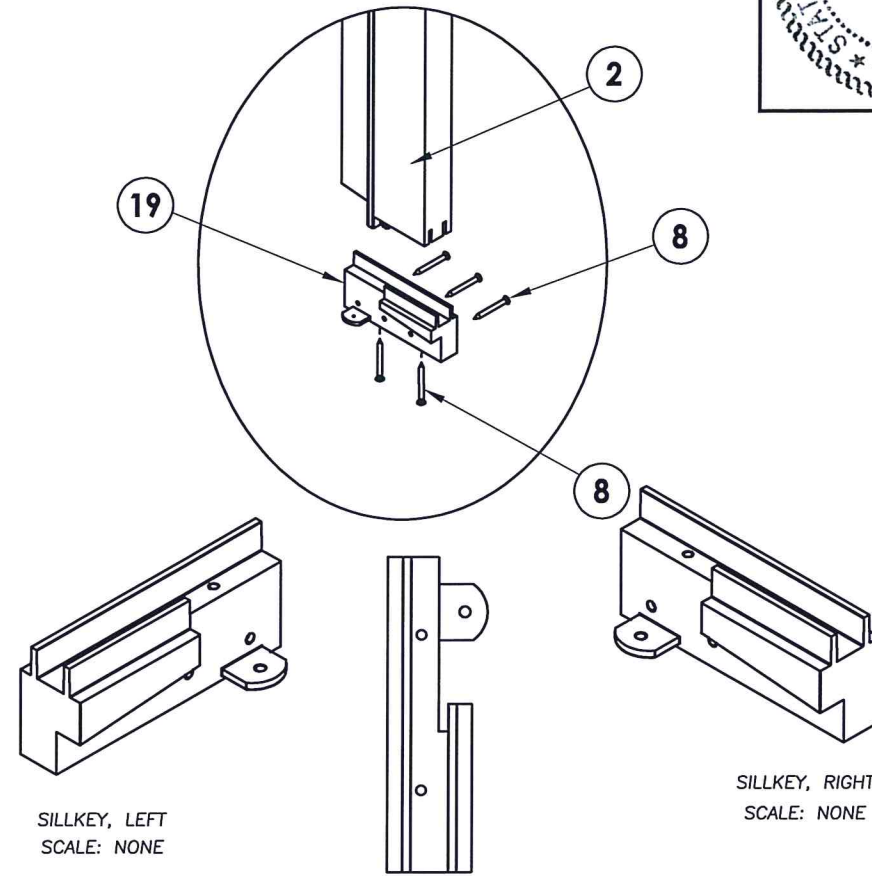
61 SIDELITE SPACER  
Inswing



6 DOOR BOTTOM SWEEP



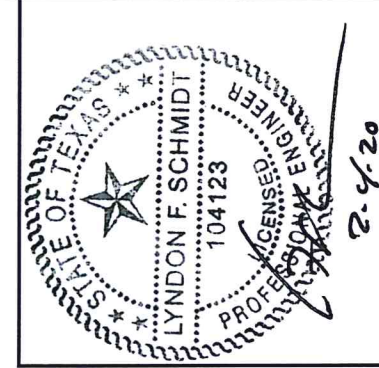
27 OUTSWING THRESHOLD



19 SILLKEY DETAILS  
Optional

SILLKEY, RIGHT  
SCALE: NONE

SILLKEY, LEFT  
SCALE: NONE



Documents Prepared By: Lyndon F. Schmidt, P.E.  
TEXAS P.E. #104123

RW BUILDING CONSULTANTS, INC.  
P.O. Box 230 Vairico FL, 33595  
Phone No.: 813.659.9197  
TEXAS BOARD OF PROFESSIONAL ENGINEERS  
CERTIFICATE OF REGISTRATION # F-11852

PRODUCT:  
TRINITY GLASS INT'L  
6 8 FLUSH GLAZED

PART OR ASSEMBLY:  
COMPONENTS

NO.	DATE	REVISIONS
3	2/03/20	UPDATE TO 2018 IBC/IRC
2	7/27/09	TDI PRODUCT EVALUATION UPDATE
1	6/28/06	REVISED LOCKSET NOMENCLATURE

DATE: 8/29/05

SCALE: N.T.S.

DWG. BY: WH

CHK. BY: LFS

DRAWING NO.:

TX-4037

SHEET 8 OF 9





BILL OF MATERIALS					
ITEM	DESCRIPTION	MATERIAL	ITEM	DESCRIPTION	MATERIAL
A	2X HEADER FRAMING SG >= 0.42	WOOD	26	#9 X 1" PFH WS	STEEL
B	2X FRAMING SG >= 0.42	WOOD	27	OUTSWING THRESHOLD ALUMINUM W/ COMPOSITE SUBSTRATE	ALUM./ COMP.
G	MAX. 1/4" SHIM SPACE	WOOD	30	LATCH STILE - SG >= 0.42	LVL/PVC
J	#10 X 3" PFH WS	STEEL	31	LVL LOCK BLOCK	POPLAR
K	#9 X 2" PFH WS	STEEL	32	HINGE STILE - SG >= 0.42	LVL/PVC
P	3/16" X 2-3/4" ELCO OR ITW PFH CONCRETE SCREW	STEEL	33	TOP RAIL - POPLAR LVL & WPC COMBINATION	POPLAR/WPC
2	STRIKE JAMB - FINGER-JOINT PINE - SG >= 0.42	WOOD	34	BOTTOM RAIL - POPLAR LVL & WPC COMBINATION	POPLAR/WPC
3	HINGE JAMB - FINGER-JOINT PINE - SG >= 0.42	WOOD	35	LITE FRAME	PC/ASA
4	HEAD - FINGER-JOINT PINE - SG >= 0.42	WOOD	36	GLAZING COMPOUND	SILICONE
5	INSWING THRESHOLD ALUMINUM W/ COMPOSITE SUBSTRATE	ALUMINUM	39	FIBERGLASS SKIN 0.079" MIN. THICKNESS	FIBERGLASS
6	DOOR BOTTOM SWEEP	PVC	40	#8 X 1-1/8" SELF THREADING SCREW	STEEL
7	DOOR PANEL - SEE DOOR PANEL DETAIL SHEET FOR CONSTRUCTION DETAILS	-	41	POLYPROPYLENE & PVC COMBINATION GLAZING SPACER	POLY.
8	#6 X 1-1/4 PFH DRYWALL SCREW	STEEL	42	ALUMINUM & BUTYL SPACER SYSTEM	ALUM./BUTYL
9	#9 X 2-1/4" PFH WOOD SCREW	STEEL	43	PVC & ALUMINUM SPACER SYSTEM	PVC/ ALUM.
12	WEATHER STRIP QEBD650 Q-LON	-	60	SIDELITE SPACER - OUTSWING	PVC
18	3.983" X 4.0" HINGE MIN 0.098" THICK	STEEL	61	SIDELITE SPACER - INSWING	PVC
19	SILLKEY	PC/ASA	62	QUARTER ROUND	WOOD
21	LOCK (SEE LOCK & DEADBOLT RATINGS CHART)	STEEL	63	#8 X 2-1/4" PFH SCREW	STEEL
22	DEADBOLT (SEE LOCK & DEADBOLT RATINGS CHART)	STEEL	64	#8 X 2" PFH SCREW	STEEL
23	STRIKE PLATE	STEEL	65	#10 X 2" PFH SCREW	STEEL
23A	DEADBOLT PLATE	STEEL	66	SIDELITE PANEL - SEE SIDELITE PANEL DETAIL SHEET FOR CONSTRUCTION DETAILS	-
24	#9 X 5/8" PFH WS	STEEL	70	LVL SIDELITE STILE	POPLAR
25	OUTSWING HIGH-DAM THRESHOLD ALUMINUM W/ COMPOSITE SUBSTRATE	ALUM./ COMP.	71	LVL SIDELITE TOP RAIL	POPLAR
			72	LVL SIDELITE BOTTOM RAIL	POPLAR

**CONCRETE ANCHOR NOTES:**

- Concrete anchor locations at the corners may be adjusted to maintain the min. edge distance to mortar joints.
- Concrete anchor locations noted as "MAX. ON CENTER" must be adjusted to maintain the min. edge distance to mortar joints, additional concrete anchors may be required to ensure the "MAX. ON CENTER" dimension are not exceeded.
- Concrete anchor table:

ANCHOR TYPE	ANCHOR SIZE	MIN. EMBEDMENT	MIN. CLEARANCE TO MASONRY EDGE	MIN. CLEARANCE TO ADJACENT ANCHOR
ITW BUILDEX TAPCON®	1/4"	1-3/4"	2"	4"
ELCO ULTRACON®	1/4"	1-3/4"	1"	4"

**WOOD SCREW INSTALLATION NOTES:**

- Maintain a minimum 5/8" edge distance, 1" end distance, & 1" o.c. spacing of wood screws to prevent the splitting of wood.

Documents Prepared By: Lyndon F. Schmidt, P.E.  
TEXAS P.E. #104123

**RW** BUILDING CONSULTANTS, INC.  
P.O. Box 230 Vairico FL 33595  
Phone No.: 813.659.9197

TEXAS BOARD OF PROFESSIONAL ENGINEERS  
CERTIFICATE OF REGISTRATION # F-11852

PRODUCT: TRINITY GLASS INT'L  
6 8 FLUSH GLAZED

PART OR ASSEMBLY:  
BILL OF MATERIALS & COMPONENTS

NO.	DATE	REVISIONS
3	2/03/20	UPDATE TO 2018 IBC/IRC
2	7/27/09	TDI PRODUCT EVALUATION UPDATE
1	6/28/06	REVISED LOCKSET NOMENCLATURE

DATE: 8/29/05  
SCALE: N.T.S.  
DWG. BY: WH  
CHK. BY: LFS  
DRAWING NO.: TX-4037  
SHEET 9 OF 9

© 2009 R.W. BUILDING CONSULTANTS INC.