

TUBELITE INC. MONUMENTAL ENTRANCE SERIES ALUMINUM OUT-SWING DOOR

THESE DOORS ARE RATED FOR LARGE & SMALL MISSILE IMPACT.
SHUTTERS ARE NOT REQUIRED.

**MONUMENTAL
ALUMINUM OUT-SWING ENTRANCE DOOR**

SEE SHEET 2 FOR DESIGN LOAD CAPACITY OF SINGLE AND DOUBLE DOORS.

DOORS NOT APPROVED FOR INSTALLATIONS WHERE WATER INFILTRATION RESISTANCE IS REQUIRED.

THIS PRODUCT HAS BEEN DESIGNED AND TESTED TO COMPLY WITH THE REQUIREMENTS OF THE 2018 INTERNATIONAL RESIDENTIAL CODE (IRC) AND 2018 INTERNATIONAL BUILDING CODE (IBC).

1BY OR 2BY WOOD BUCKS & BUCK FASTENERS BY OTHERS, MUST BE DESIGNED AND INSTALLED ADEQUATELY TO TRANSFER APPLIED PRODUCT LOADS TO THE BUILDING STRUCTURE.

ANCHORS SHALL BE CORROSION RESISTANT, SPACED AS SHOWN ON DETAILS AND INSTALLED PER MANUF'S INSTRUCTIONS. SPECIFIED EMBEDMENT TO BASE MATERIAL SHALL BE BEYOND WALL DRESSING OR STUCCO.

A LOAD DURATION INCREASE IS USED IN DESIGN OF ANCHORS INTO WOOD ONLY.

ALL SHIMS TO BE HIGH IMPACT, NON-METALLIC AND NON-COMPRESSIBLE.

MATERIALS INCLUDING BUT NOT LIMITED TO STEEL/METAL SCREWS, THAT COME INTO CONTACT WITH OTHER DISSIMILAR MATERIALS SHALL MEET THE REQUIREMENTS OF THE INTERNATIONAL BUILDING CODE.

THIS PRODUCT APPROVAL IS GENERIC AND DOES NOT PROVIDE INFORMATION FOR A SITE SPECIFIC PROJECT, i.e. LIFE SAFETY OF THIS PRODUCT, ADEQUACY OF STRUCTURE RECEIVING THIS PRODUCT AND SEALING AROUND OPENING FOR WATER INFILTRATION RESISTANCE ETC.

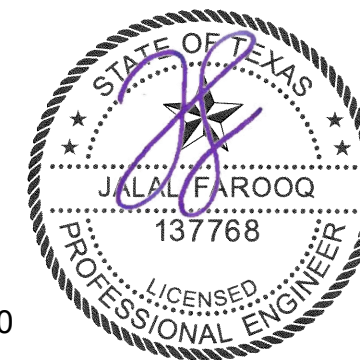
CONDITIONS NOT SHOWN IN THIS DRAWING ARE TO BE ANALYZED SEPARATELY, AND TO BE REVIEWED BY BUILDING OFFICIAL.

DESIGN LOADS SHOWN ARE BASED ON 'ALLOWABLE STRESS DESIGN (ASD)'.

MANUFACTURER'S LABEL SHALL BE LOCATED ON A READILY VISIBLE LOCATION IN ACCORDANCE WITH SECTIONS R613.4 AND R613.7.1 OF THE IRC AND SECTION 1714.5.1 OF THE IBC.

NOTE:
GLASS CAPACITIES ARE
BASED ON ASTM E1300-09 (3 SEC. GUSTS).

12/17/2020



a f c

AL-FAROOQ CORPORATION

ENGINEERS & PRODUCT DEVELOPMENT
9360 SUNSET DRIVE, SUITE 220
MIAMI, FLORIDA 33173 (C.A.N. 3538)
TEL. (305) 264-8100 FAX. (305) 262-6978

COMP-ANL\19-92T-TLI

MONUMENTAL ALUMINUM OUTSWING DOOR (L-M.I.)

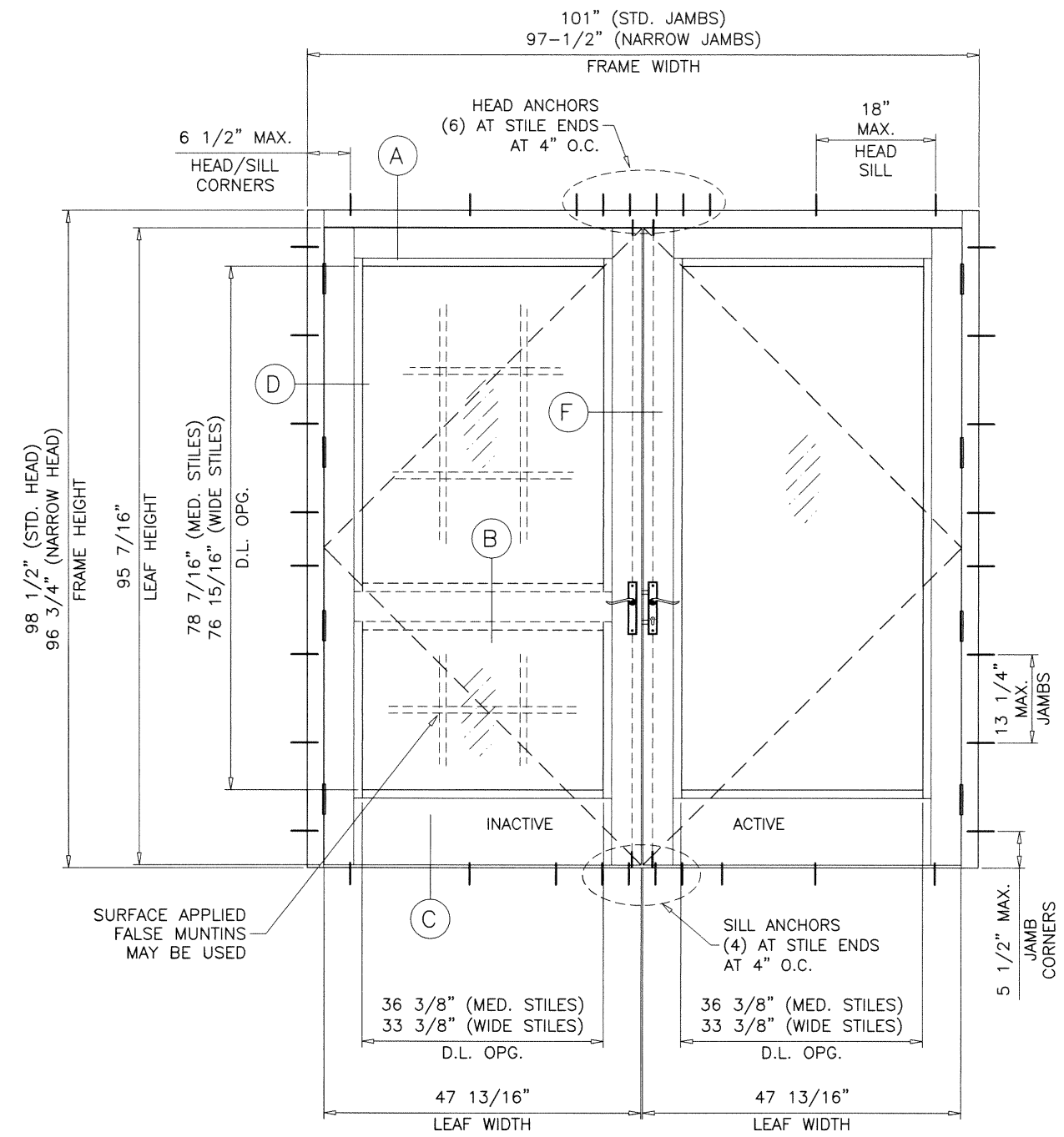
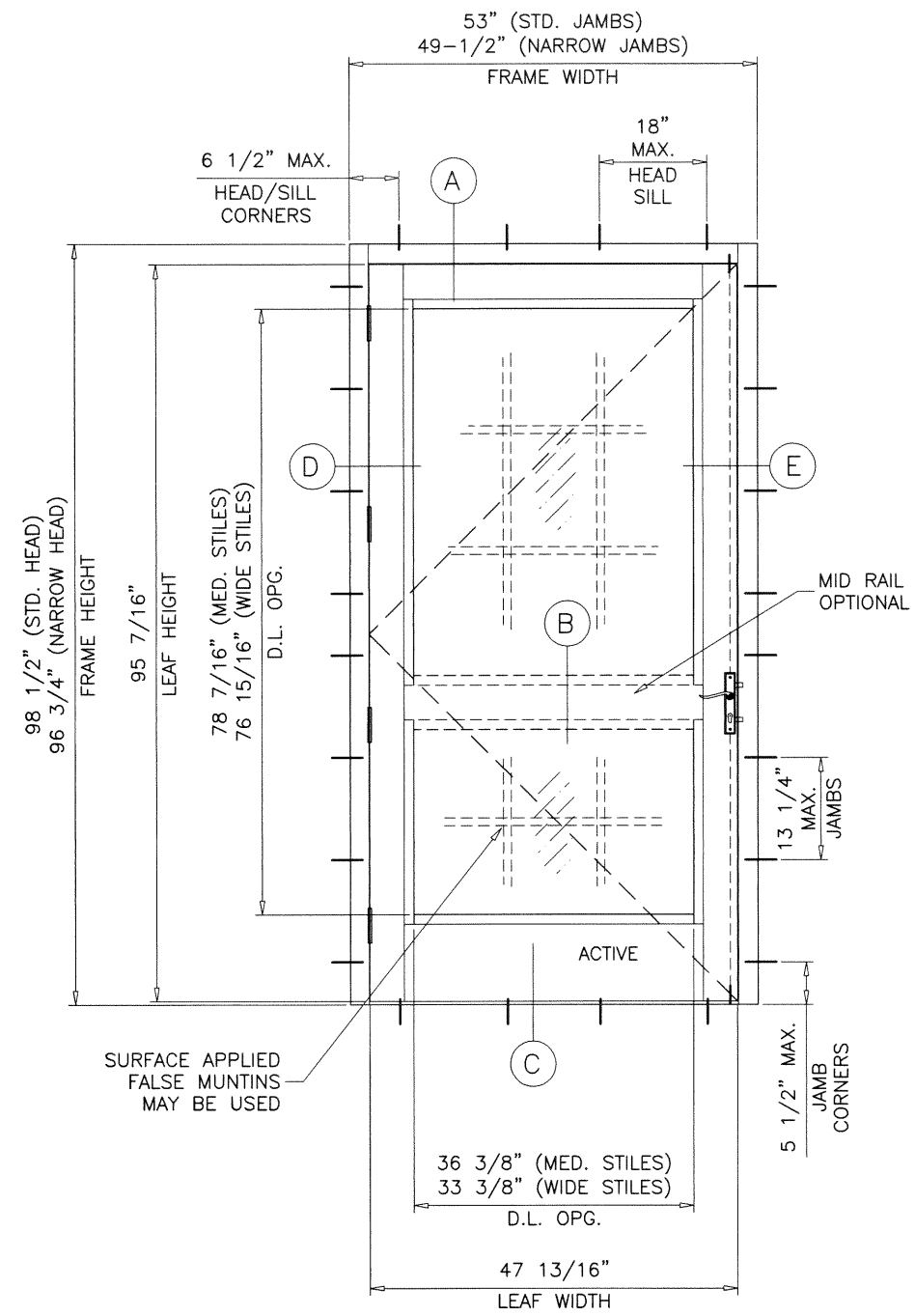
TUBELITE INC.

3056 Walker Ridge Dr. N.W., Suite G
Walker, MI 49544
Tel. 800-866-2227 Fax.

| no | date | description | by | REV. PER TDI | COMMENTS |
|----|----------|-------------|----|--------------|----------|
| A | 10.27.20 | | | | |
| | | | | | |
| | | | | | |

date: 08-22-19
 scale: --
 dr. by: TARIQ
 chk. by:

drawing no.
19-92T
 sheet 1 of 15



TYPICAL ELEVATIONS

| SINGLE DOORS LOAD CAPACITY - PSF | | | | | |
|----------------------------------|--------|------------|-----------|---------|---------|
| DOOR OPNG. DIMS. | | LEAF DIMS. | | EXT.(+) | INT.(-) |
| WIDTH | HEIGHT | WIDTH | HEIGHT | | |
| 48" | 96" | 47-13/16" | 95-7/16" | 70.0 | 70.0 |
| 37-1/2" | 108" * | 37-5/16" | 107-7/16" | 66.0 | 66.0 |

| DOUBLE DOORS LOAD CAPACITY - PSF | | | | | |
|----------------------------------|--------|------------|-----------|---------|---------|
| DOOR OPNG. DIMS. | | LEAF DIMS. | | EXT.(+) | INT.(-) |
| WIDTH | HEIGHT | WIDTH | HEIGHT | | |
| 96" | 96" | 47-13/16" | 95-7/16" | 70.0 | 70.0 |
| 75" | 108" * | 37-5/16" | 107-7/16" | 66.0 | 66.0 |

GLASS D.L.O. FORMULAE:

D.L.O. WIDTH = LEAF WIDTH - 11.438" (MEDIUM STILES)
 = LEAF WIDTH - 14.438" (WIDE STILES)

D.L.O. HEIGHT = LEAF HEIGHT - 17" (MEDIUM STILES)
 = LEAF HEIGHT - 18.50" (WIDE STILES)

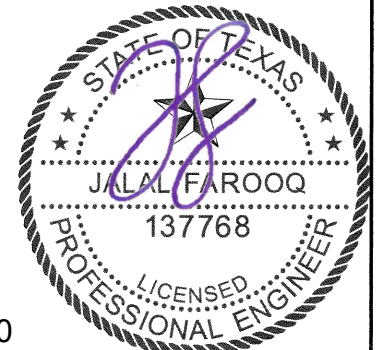
DOOR LEAF WIDTH (X DOORS) = FRAME WIDTH - 5.187" (STD. JAMBS)
 = FRAME WIDTH - 1.687" (NARROW JAMBS)

DOOR LEAF WIDTH (XX DOORS) = FRAME WIDTH - 5.375" (STD. JAMBS)
 = FRAME WIDTH - 1.875" (NARROW JAMBS)

DOOR LEAF HEIGHT = FRAME HEIGHT - 3.062" (STD. HEAD)
 = FRAME HEIGHT - 1.3125" (NARROW HEAD)

* LIMIT THESE SIZES TO DOORS GLAZED WITH DOWSIL 995 ONLY.

NOTE:
 GLASS CAPACITIES ARE
 BASED ON ASTM E1300-09 (3 SEC. GUSTS).



12/17/2020

afc

AL-FAROOQ CORPORATION
 ENGINEERS & PRODUCT DEVELOPMENT
 9360 SUNSET DRIVE, SUITE 220
 MIAMI, FLORIDA 33173 (C.A.N. 3538)
 TEL. (305) 264-8100 FAX. (305) 262-6978
 COMP-ANL\19-92T-TL

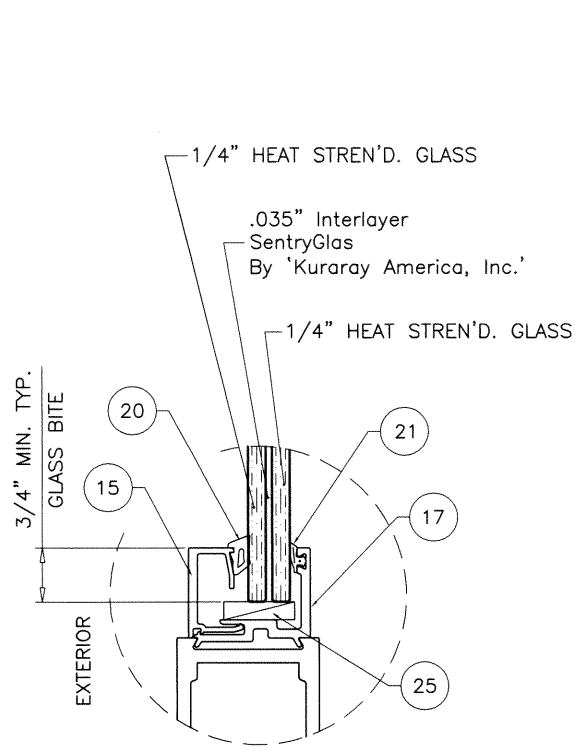
MONUMENTAL ALUMINUM OUTSWING DOOR (L.M.I.)

TUBELITE INC.
 3056 Walker Ridge Dr. N.W., Suite G
 Walker, MI 49544
 Tel. 800-866-2227 Fax.

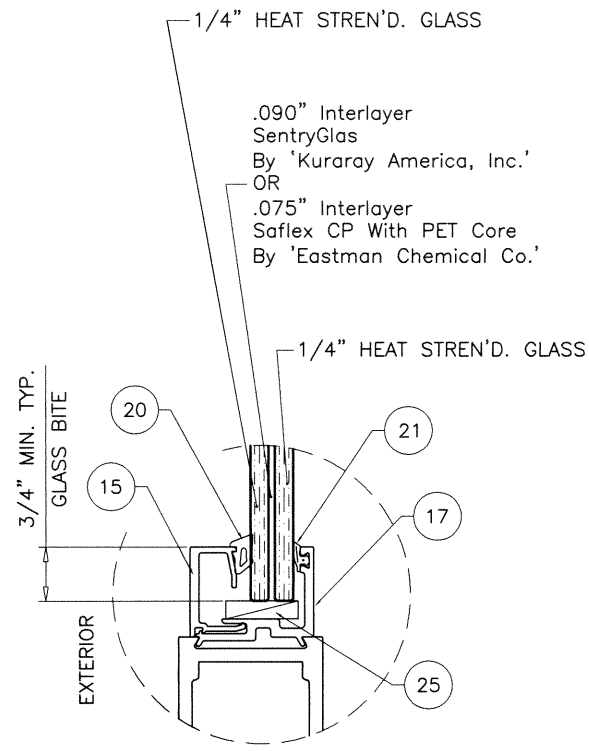
| | | | |
|------------|----|------|-------------|
| revisions: | no | date | description |
| | | | |

date: 08-22-19
 scale: 1/2"=1'-0"
 dr. by: TARIQ
 chk. by:

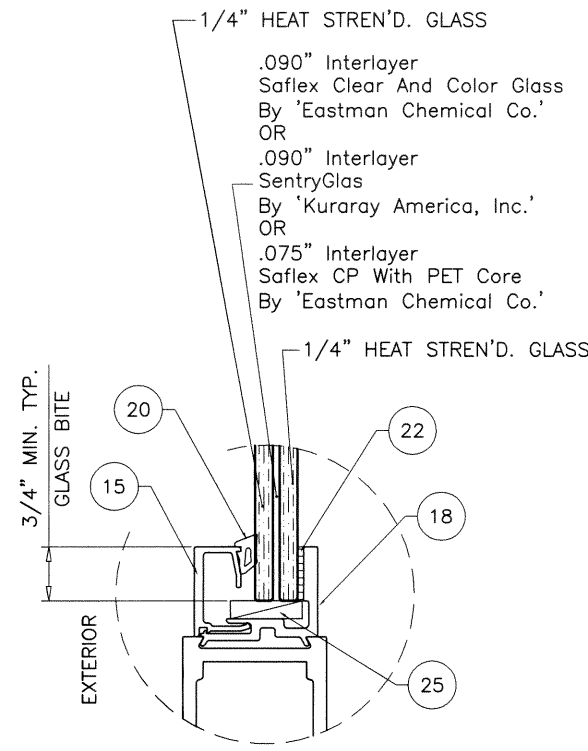
drawing no.
19-92T
 sheet 2 of 15



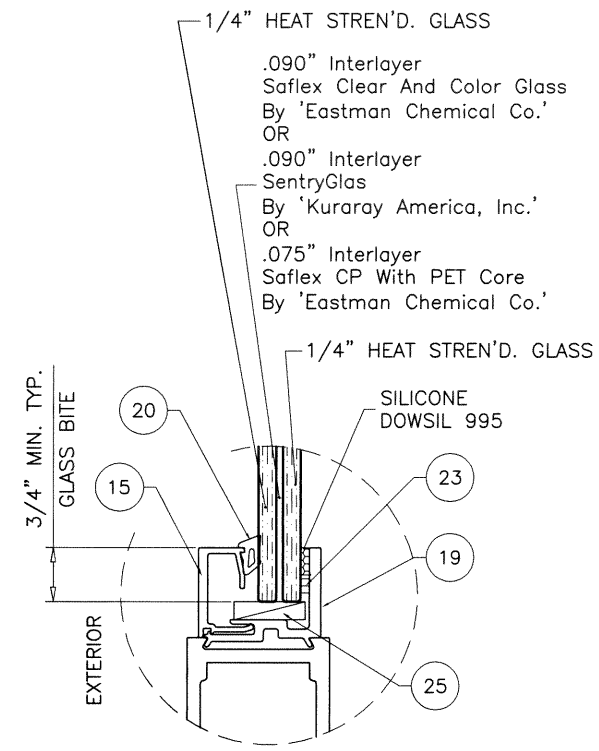
GLASS TYPE 'C'
9/16" OVERALL LAM. GLASS



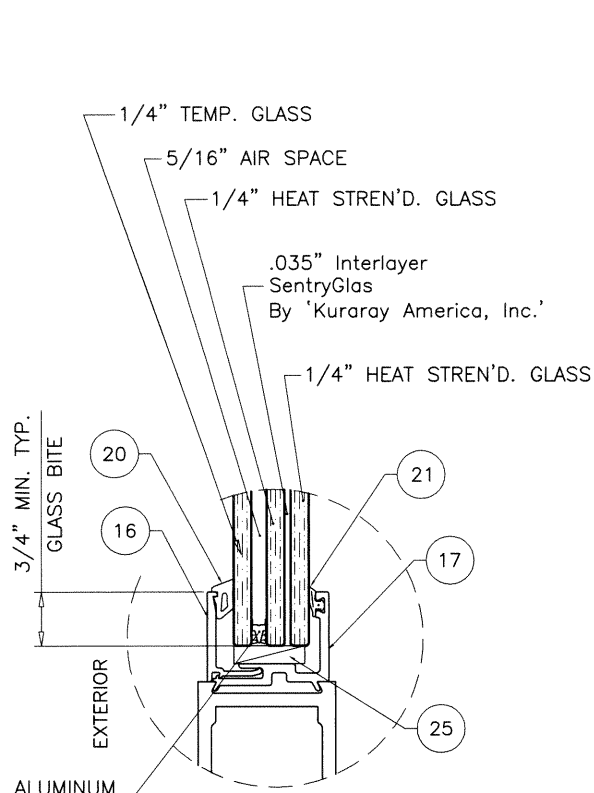
GLASS TYPE 'D'
9/16" OVERALL LAM. GLASS



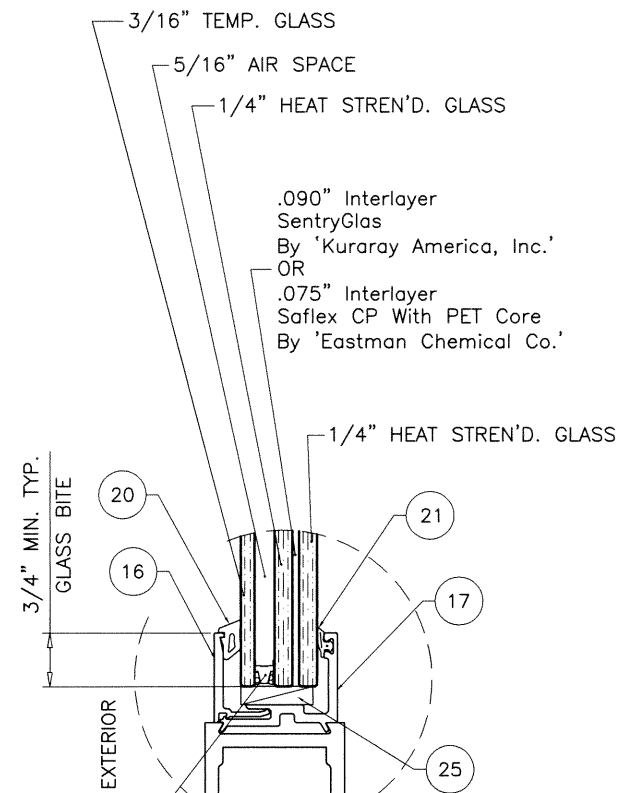
GLASS TYPE 'D1'
9/16" OVERALL LAM. GLASS



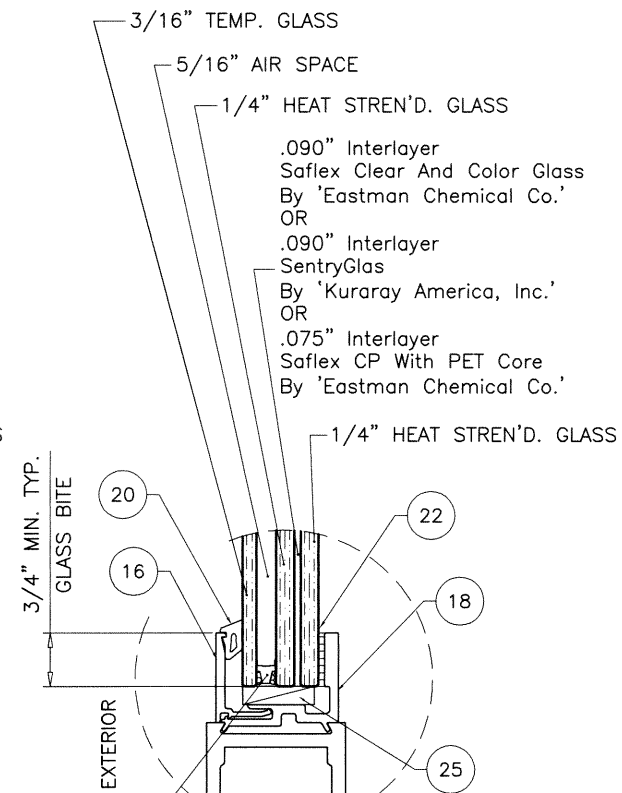
GLASS TYPE 'D2'
9/16" OVERALL LAM. GLASS



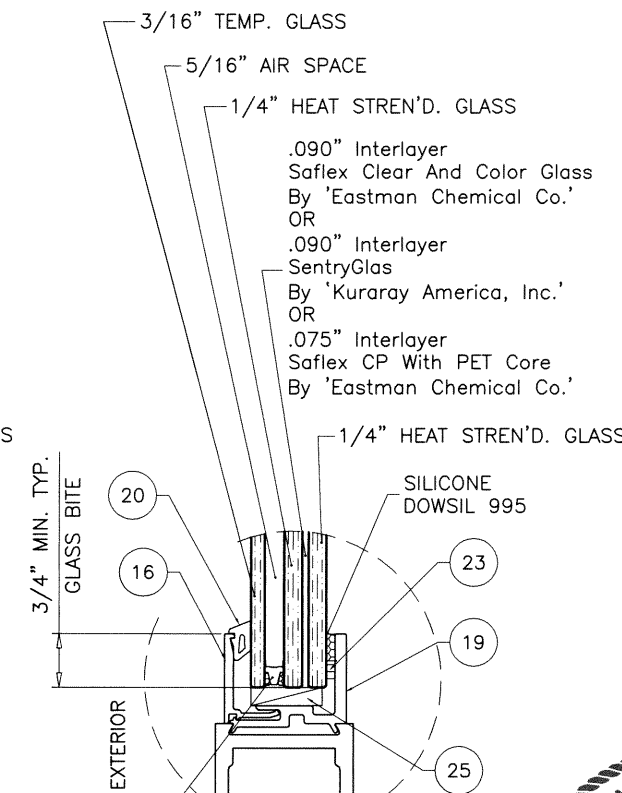
GLASS TYPE 'Ci'
1-1/16" OVERALL INSUL. LAM. GLASS



GLASS TYPE 'Di'
1-1/16" OVERALL INSUL. LAM. GLASS



GLASS TYPE 'D1i'
1-1/16" OVERALL INSUL. LAM. GLASS

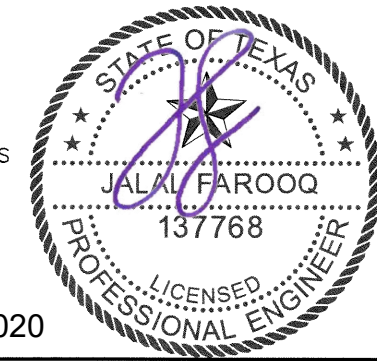


GLASS TYPE 'D2i'
1-1/16" OVERALL INSUL. LAM. GLASS

GLAZING DETAILS
LEVEL 'C' IMPACT

GLAZING DETAILS
LEVEL 'D' IMPACT

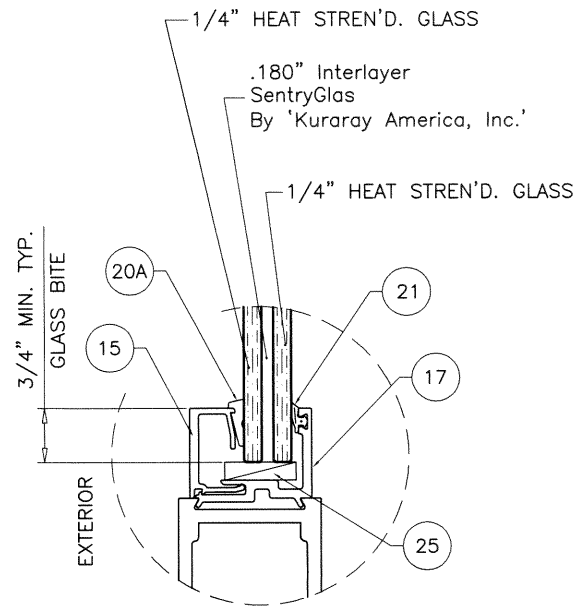
12/17/2020



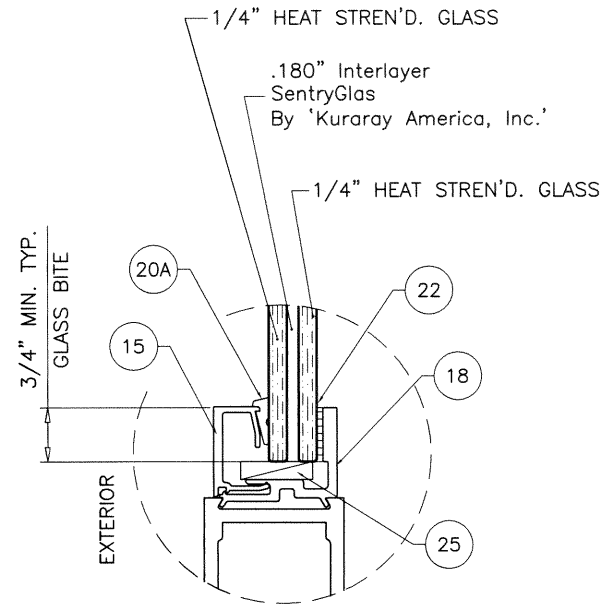
af c
AL-FAROOQ CORPORATION
ENGINEERS & PRODUCT DEVELOPMENT
9360 SUNSET DRIVE, SUITE 220
MIAMI, FLORIDA 33173 (C.A.N. 3538)
TEL. (305) 264-8100 FAX. (305) 262-6978
COMP-ANL\19-92T-TLI

MONUMENTAL ALUMINUM OUTSWING DOOR (L.M.I.)
TUBELITE INC.
3056 Walker Ridge Dr. N.W., Suite G
Walker, MI 49544
Tel. 800-866-2227 Fax.

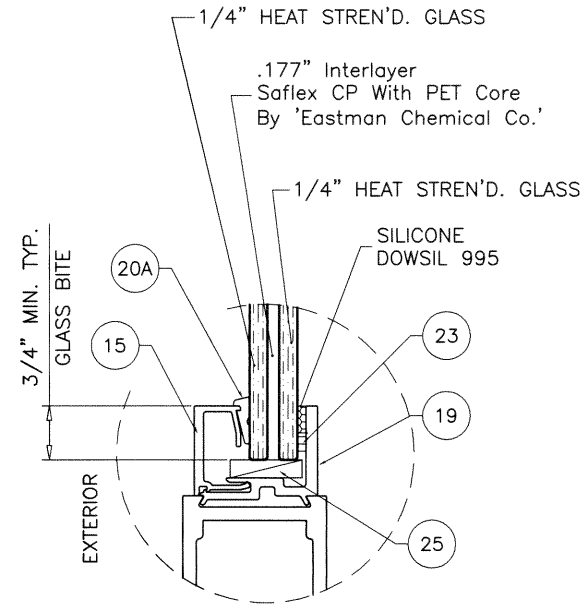
| revisions: | | no | date | by | description |
|-------------|----------|----------|-----------|---------|-------------|
| date: | 08-22-19 | scale: | 3/8" = 1" | dr. by: | TARIQ |
| | | chk. by: | | | |
| drawing no. | | | | 19-92T | |
| sheet | | | | 3 of 15 | |



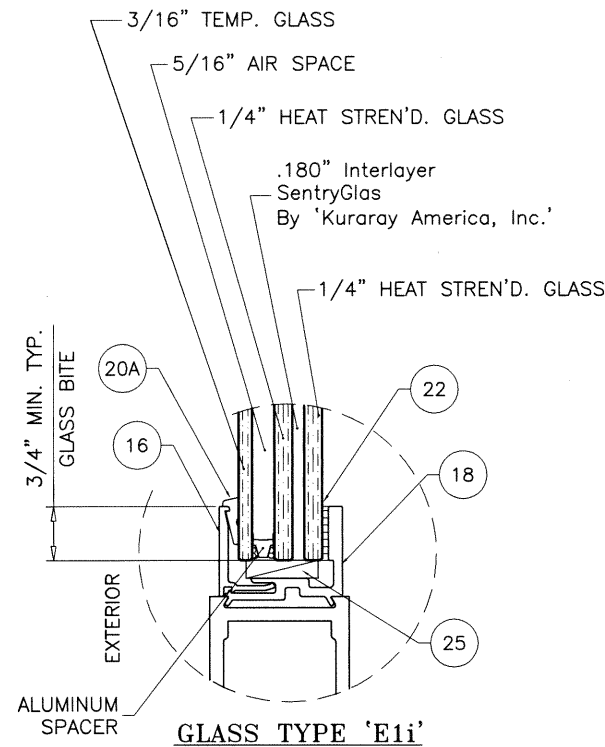
GLASS TYPE 'E'
11/16" OVERALL LAM. GLASS



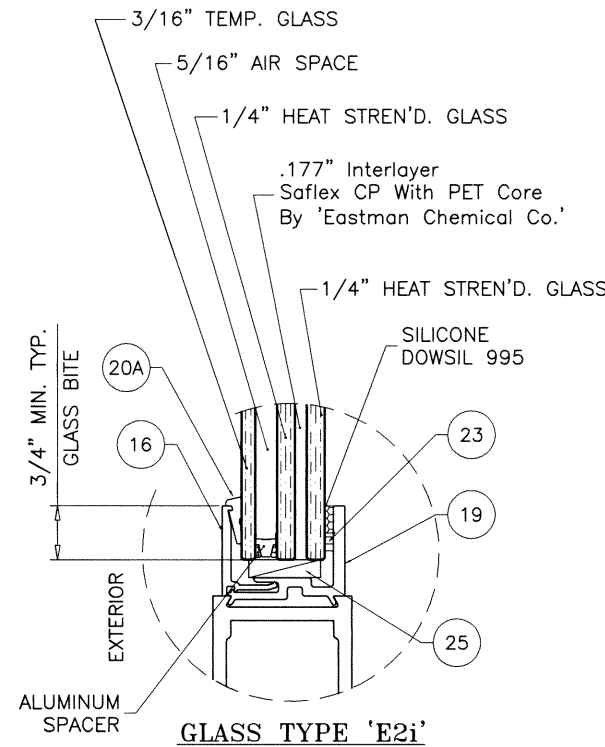
GLASS TYPE 'E1'
11/16" OVERALL LAM. GLASS



GLASS TYPE 'E2'
11/16" OVERALL LAM. GLASS

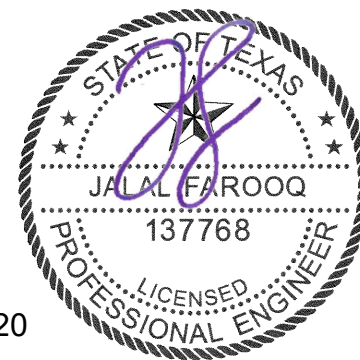


GLASS TYPE 'E1i'
1-3/16" OVERALL INSUL. LAM. GLASS



GLASS TYPE 'E2i'
1-3/16" OVERALL INSUL. LAM. GLASS

**GLAZING DETAILS
LEVEL 'E' IMPACT**



12/17/2020

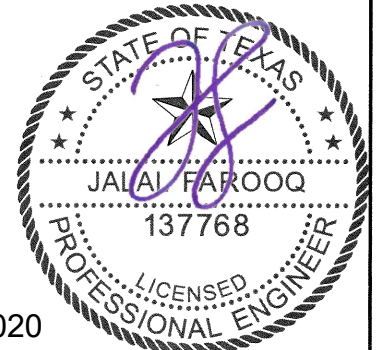
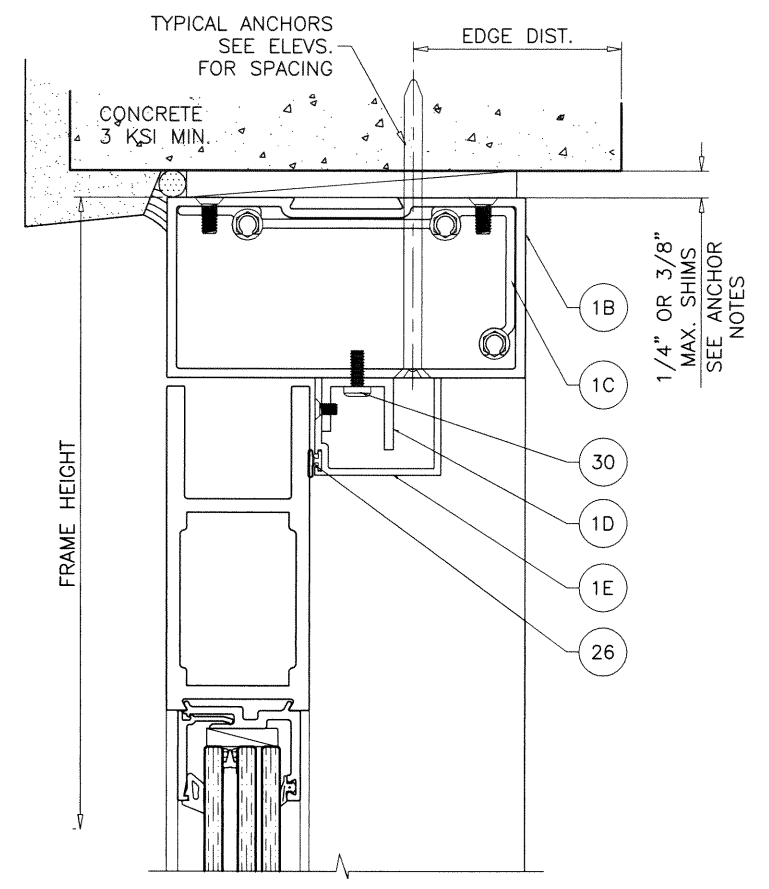
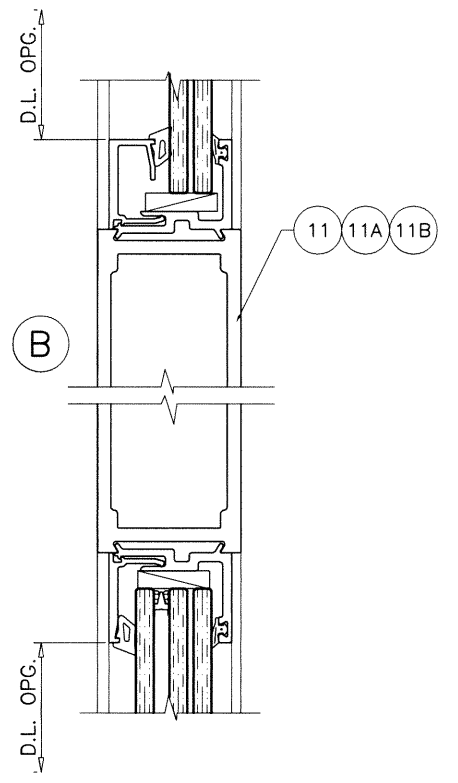
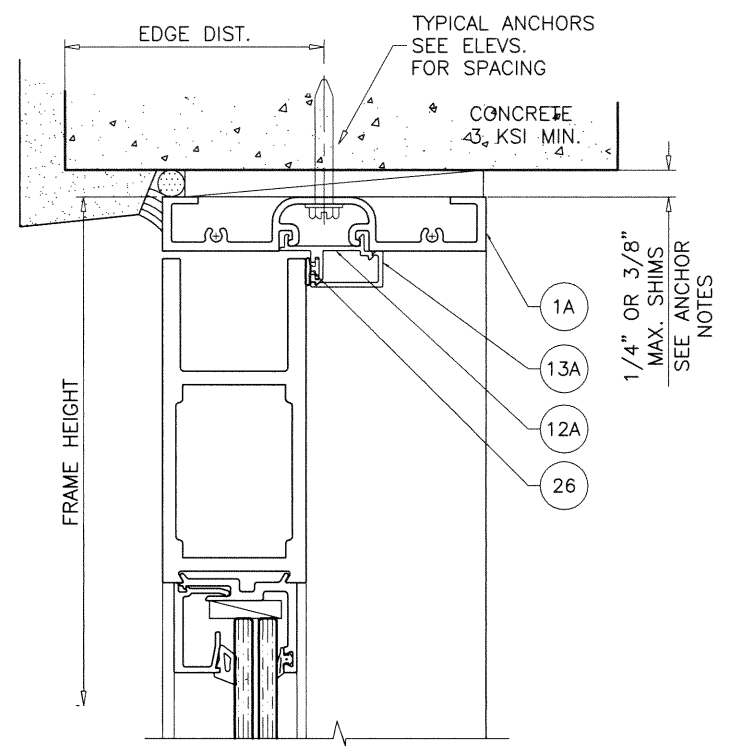
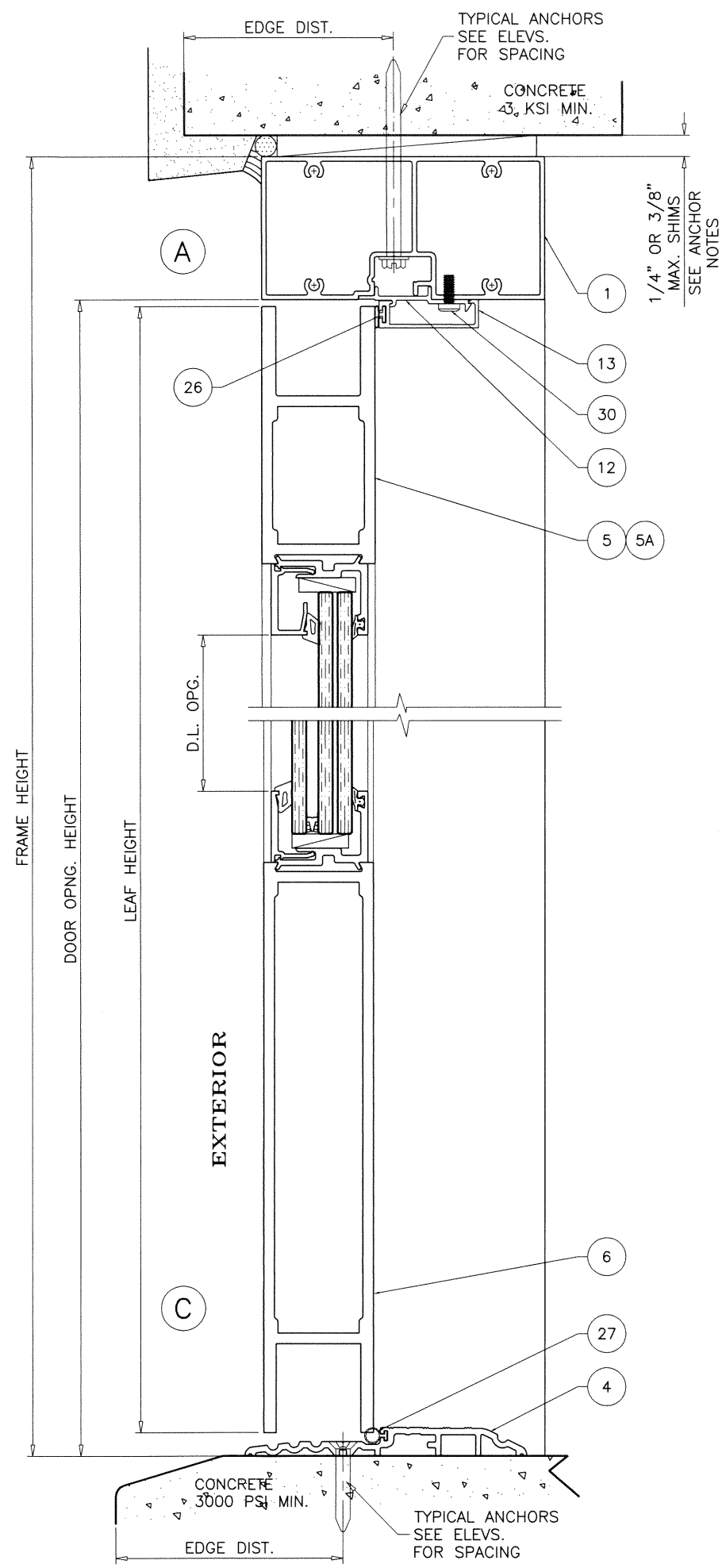
afc
AL-FAROOQ CORPORATION
ENGINEERS & PRODUCT DEVELOPMENT
9360 SUNSET DRIVE, SUITE 220
MIAMI, FLORIDA 33173 (C.A.N. 3538)
TEL. (305) 264-8100 FAX. (305) 262-6978
COMP-ANL\19-92T-TL

MONUMENTAL ALUMINUM OUTSWING DOOR (L.M.I.)
TUBELITE INC.
3056 Walker Ridge Dr. N.W., Suite G
Walker, MI 49544
Tel. 800-866-2227 Fax.

| revisions: | no | date | by | description |
|------------|----|------|----|-------------|
| | | | | |
| | | | | |
| | | | | |

date: 08-22-19
scale: 3/8" = 1"
dr. by: TARIQ
chk. by:

drawing no.
19-92T
sheet 4 of 15



12/17/2020

afc

AL-FAROOQ CORPORATION
 ENGINEERS & PRODUCT DEVELOPMENT
 9360 SUNSET DRIVE, SUITE 220
 MIAMI, FLORIDA 33173 (C.A.N. 3538)
 TEL. (305) 264-8100 FAX. (305) 262-6978
 COMP-ANL 19-92T-TLI

MONUMENTAL ALUMINUM OUTSWING DOOR (L.M.I.)

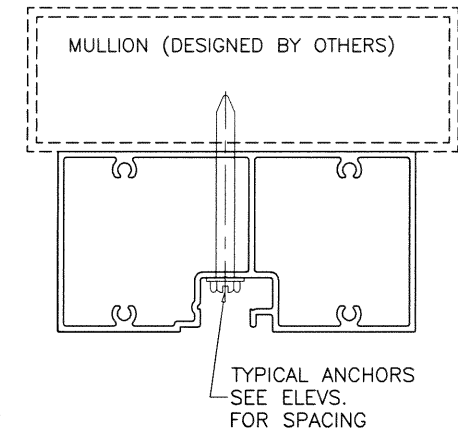
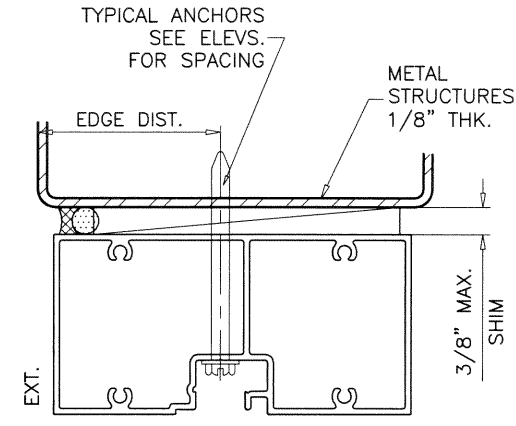
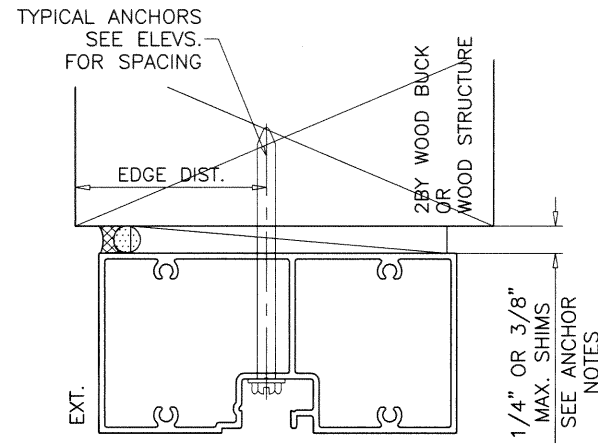
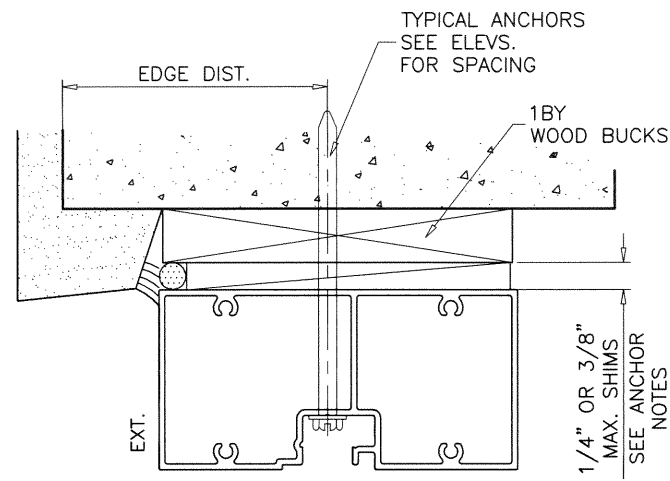
TUBELITE INC.
 3056 Walker Ridge Dr. N.W., Suite G
 Walker, MI 49544
 Tel. 800-866-2227 Fax.

| revisions: | |
|------------|---------------------|
| no | date by description |
| | |
| | |
| | |

| | |
|----------------|------------------|
| date: 08-22-19 | scale: 3/8" = 1" |
| dr. by: TARIQ | chk. by: |

drawing no.
19-92T

sheet 5 of 15



WOOD BUCKS AND METAL STRUCTURE NOT BY 'TUBELITE INC.' MUST SUSTAIN LOADS IMPOSED BY GLAZING SYSTEM AND TRANSFER THEM TO THE BUILDING STRUCTURE.

TYPICAL ANCHORS: SEE ELEV. FOR SPACING

1/4" DIA. TAPCON BY 'ITW' (Fu=125 KSI, Fy=100 KSI)
(1/4" MAX. SHIMS)

1/4" DIA. ULTRACON+ BY 'DEWALT' (Fu=164 KSI, Fy=148 KSI)
(3/8" MAX. SHIMS)

INTO 2BY WOOD BUCKS OR WOOD STRUCTURES
1-1/2" MIN. PENETRATION INTO WOOD (HEAD/JAMBS)

THRU 1BY BUCKS INTO CONC. OR MASONRY
1-1/4" MIN. EMBED INTO CONCRETE (HEAD/JAMBS)
1-1/4" MIN. EMBED INTO MASONRY (JAMBS)

DIRECTLY INTO CONCRETE OR MASONRY
1-1/4" MIN. EMBED INTO CONCRETE (HEAD/SILL/JAMBS)
1-1/4" MIN. EMBED INTO MASONRY (JAMBS)

1/4" DIA. TEKS OR SELF DRILLING SCREWS (GRADE 5 CRS)
(3/8" MAX. SHIMS)

INTO MULLIONS (DESIGNED BY OTHERS)
OR
INTO 18 GA. METAL STUDS (Fy = 33 KSI MIN.)
OR
INTO METAL STRUCTURES (HEAD/SILL/JAMBS)
ALUMINUM: 1/8" THK. MIN. (6063-T5 MIN.)
STEEL: 1/8" THK. MIN. (Fy = 36 KSI MIN.)
(STEEL IN CONTACT WITH ALUMINUM TO BE PLATED OR PAINTED)

TYPICAL EDGE DISTANCE

INTO CONCRETE AND MASONRY = 2-1/2" MIN.
INTO WOOD STRUCTURE = 1" MIN.
INTO METAL STRUCTURE = 1/2" MIN.

WOOD AT HEAD OR JAMBS SG = 0.55 MIN.
CONCRETE AT HEAD, SILL OR JAMBS f'c = 3000 PSI MIN.
C-90 HOLLOW/FILLED BLOCK AT JAMBS f'm = 2000 PSI MIN.

afc

AL-FAROOQ CORPORATION
ENGINEERS & PRODUCT DEVELOPMENT
9360 SUNSET DRIVE, SUITE 220
MIAMI, FLORIDA 33173 (C.A.N. 3538)
TEL. (305) 264-8100 FAX. (305) 262-6978

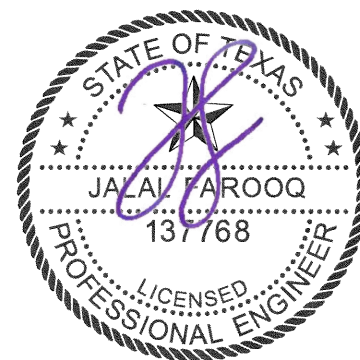
COMP-ANL\19-92T-TL

MONUMENTAL ALUMINUM OUTSWING DOOR (L.M.I.)

TUBELITE INC.
3056 Walker Ridge Dr. N.W., Suite G
Walker, MI 49544
Tel. 800-866-2227 Fax.

| revisions: | |
|------------|---------------------|
| no | date by description |
| | |
| | |
| | |
| | |

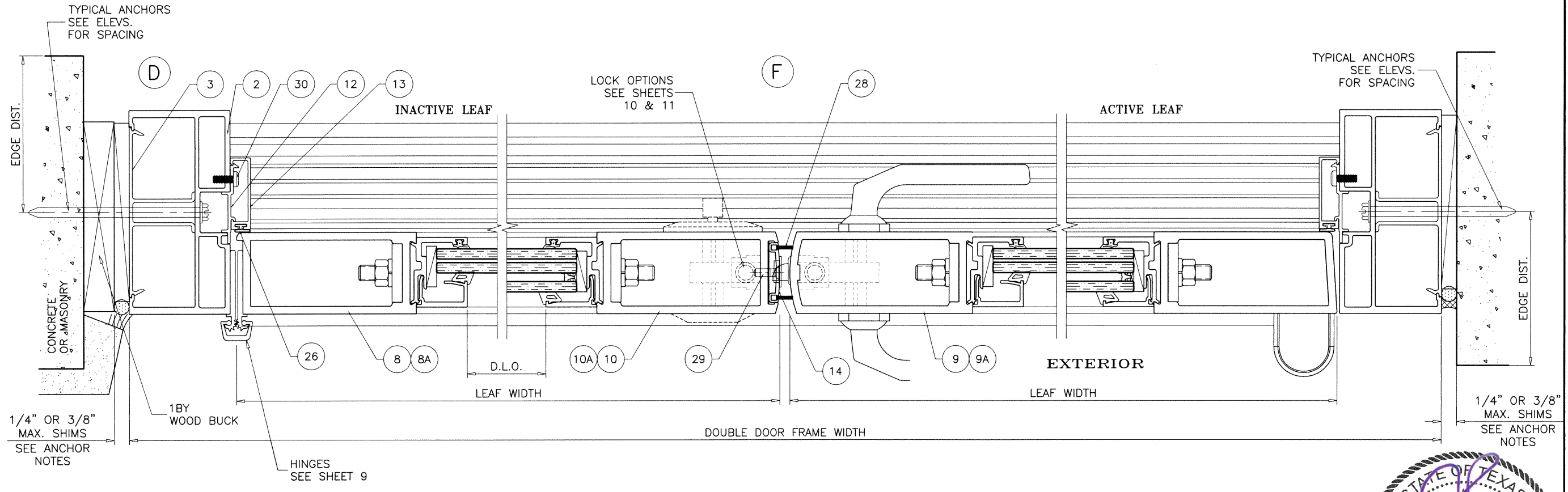
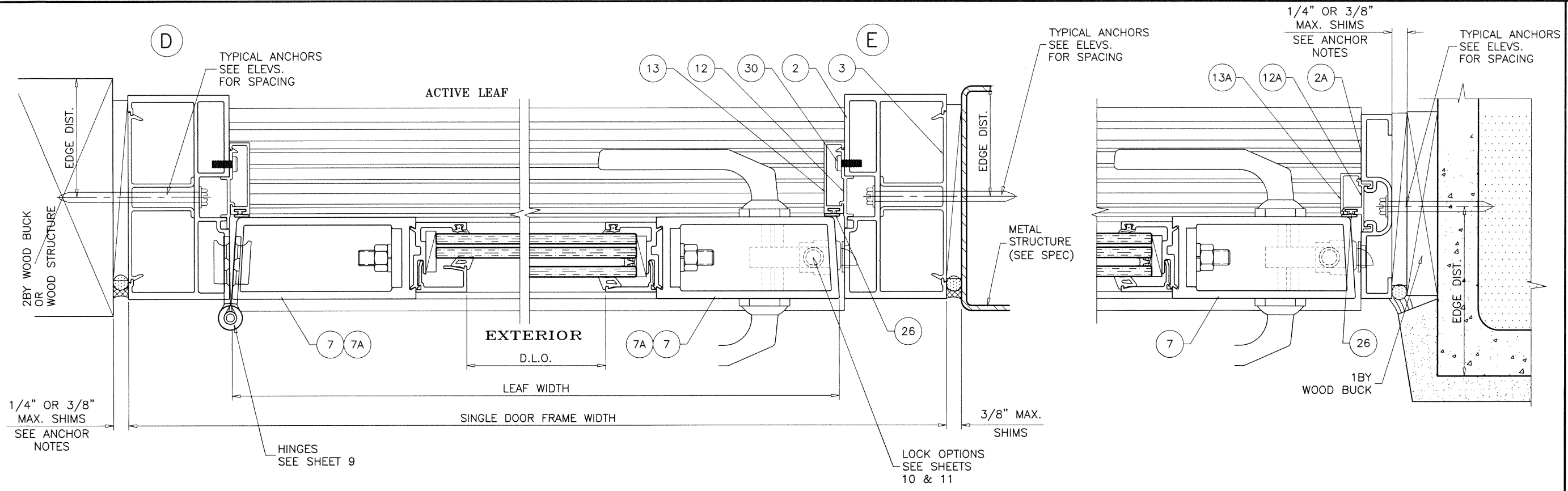
date: 08-22-19
scale: 3/8" = 1"
dr. by: TARIQ
chk. by:



drawing no.
19-92T

sheet 6 of 15

12/17/2020

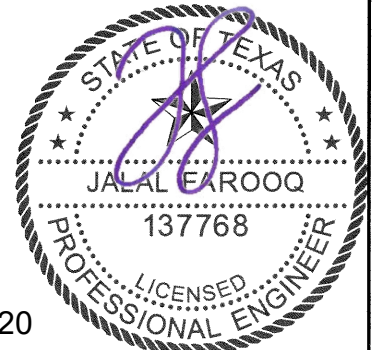


a f c
AL-FAROOQ CORPORATION
 ENGINEERS & PRODUCT DEVELOPMENT
 9360 SUNSET DRIVE, SUITE 220 (C.A.N. 3538)
 MIAMI, FLORIDA 33173 TEL. (305) 264-8100 FAX. (305) 262-6978
 COMP-ANL\19-92T-TLI

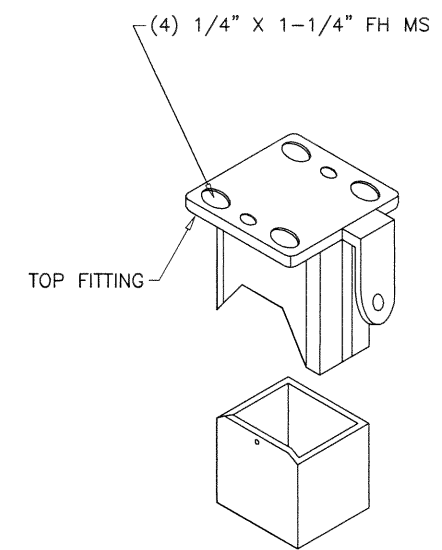
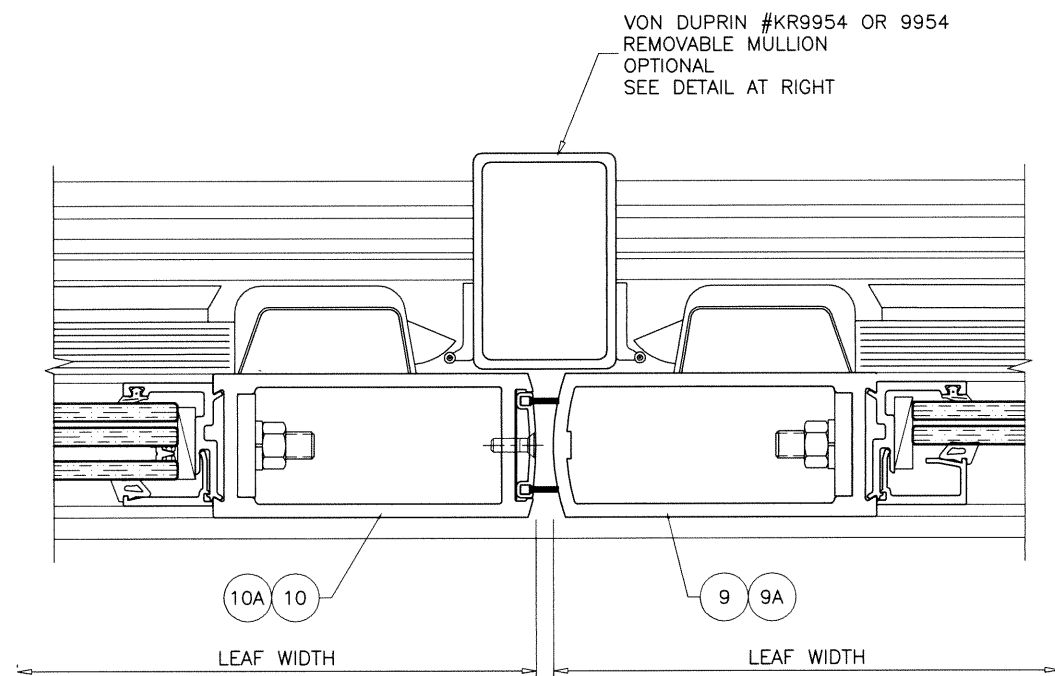
MONUMENTAL ALUMINUM OUTSWING DOOR (L.M.I.)
TUBELITE INC.
 3056 Walker Ridge Dr. N.W., Suite G
 Walker, MI 49544
 Tel. 800-866-2227 Fax.

| no | date | description |
|----|------|-------------|
| | | |
| | | |
| | | |

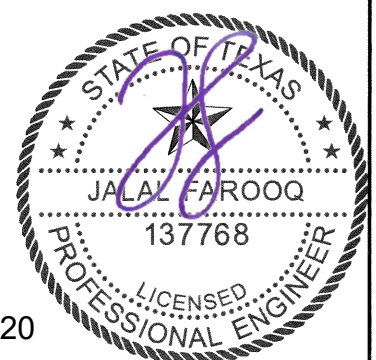
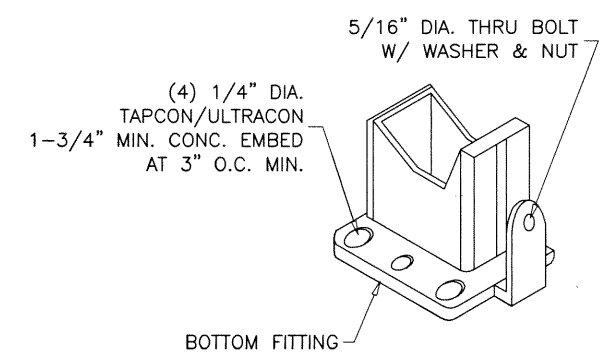
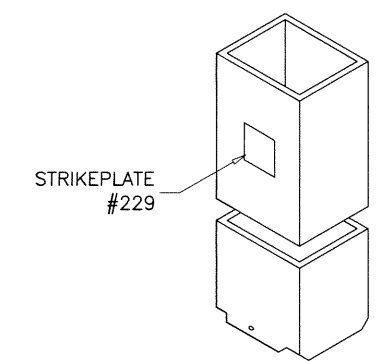
revisions:
 date: 08-22-19
 scale: 3/8" = 1"
 dr. by: TARIQ
 chk. by:
 drawing no.
19-92T
 sheet 7 of 15



12/17/2020



VON DUPRIN #KR9954
REMOVABLE MULLION
OPTIONAL
(USE ONLY WITH RIM EXIT DEVICE)



12/17/2020

af c

AL-FAROOQ CORPORATION
ENGINEERS & PRODUCT DEVELOPMENT
9360 SUNSET DRIVE, SUITE 220 (C.A.N. 3538)
MIAMI, FLORIDA 33173 TEL. (305) 264-8100 FAX. (305) 262-6978
COMP-ANL\19-92T-TLI

MONUMENTAL ALUMINUM OUTSWING DOOR (L.M.I.)

TUBELITE INC.
3056 Walker Ridge Dr. N.W., Suite G
Walker, MI 49544
Tel. 800-866-2227 Fax.

| revisions: | no | date | by | description |
|------------|----|------|----|-------------|
| | | | | |
| | | | | |
| | | | | |
| | | | | |

date: 08-22-19
scale: 3/8" = 1"
dr. by: TARIQ
chk. by:

drawing no.
19-92T

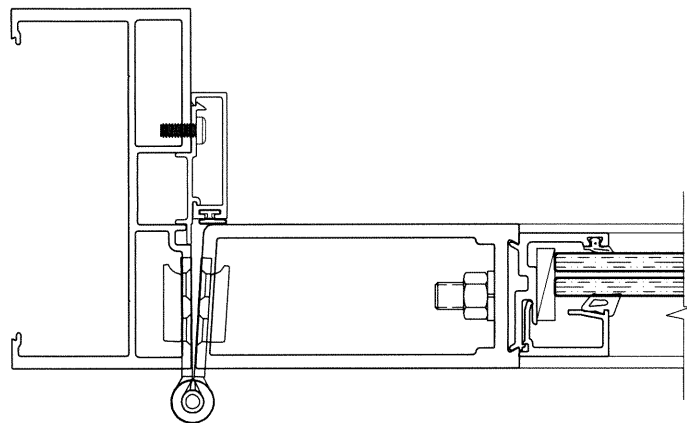
sheet 8 of 15

HINGE OPTIONS:

OPTION #1:

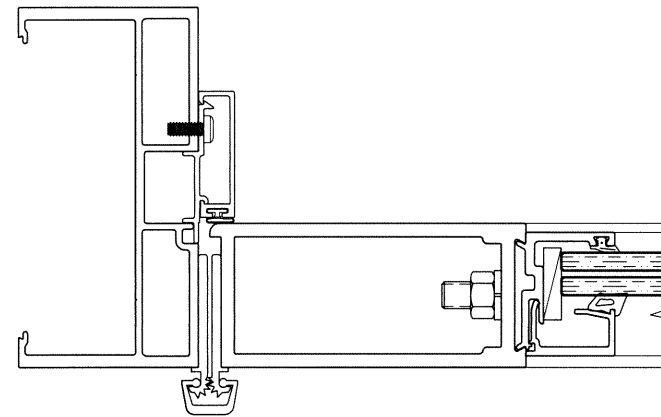
4-1/2" LONG FLUSH MOUNT STEEL BUTT HINGES
'BB1191' BY 'HAGER' OR
'ABH-663' BY 'ABH MANUFACTURING INC.'
FASTENED WITH 12-20 X 1/2" FH MACHINE SCREWS
FOUR PER HASP(LEAF).
TOP AND BOTTOM HINGES AT 5-1/2" FROM ENDS
INTERMEDIATE HINGES AT 32" O.C. MAX.

1" X 7-3/8" X 1/4" THK. ALUM BACK PLATE
AT FRAME AND LEAF
FASTENED WITH (4) #12-20 X 1/2" FH MACHINE SCREWS



OPTION #2:

CONTINUOUS GEAR ALUMINUM ROTON HINGE
'SL 11HD' BY 'SELECT'
'780' BY 'HAGER'
'KCFM-95HD1' BY 'PEMCO'
'A110HD' BY 'ABH'
FASTENED TO FRAME JAMB AND TO JAMB STILE WITH
#12-24 X 7/16" FH MS SCREWS
IN PAIRS AT 2", 4" AND 6" FROM TOP AND BOTTOM ENDS
AND IN SINGLE ROW AT 10" O.C. THEREAFTER.



OPTION #3:

OFFSET PIVOT HINGES
'P795DT/IL/DB' BY 'TUBELITE'
'180/M19/147' BY 'RIXON'

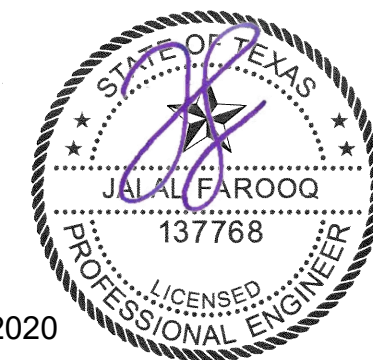
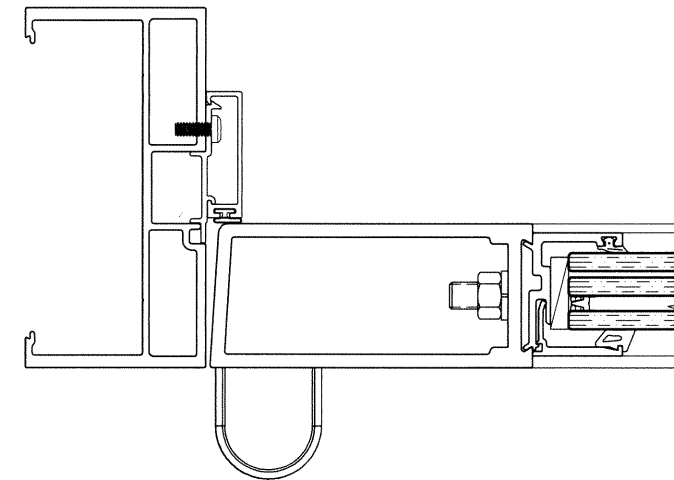
TOP AND BOTTOM HINGES
FASTENED TO FRAME AND LEAF WITH
(4) 1/4-20 X 5/8" FH MACHINE SCREWS

TOP SHIM 'C' CHANNEL
(11/16" X 1-1/2" X 6-1/2" LONG X 1/8" FLANGE THK. X 1/4" WEB THK.)
FASTENED WITH (2) 1/4-20 X 1-1/2" FH MACHINE SCREWS

BOTTOM SHIM 'C' CHANNEL
(1-1/4" X 1-1/2" X 9-1/2" LONG X 1/8" FLANGE THK. X 1/4" WEB THK.)
FASTENED WITH (2) 1/4-20 X 1-1/2" FH MACHINE SCREWS

INTERMEDIATE HINGES AT 35" O.C.
FASTENED TO FRAME AND LEAF WITH
(5) 1/4-20 X 5/8" FH MACHINE SCREWS

1" X 7-3/8" X 1/4" THK. ALUM BACK PLATE
AT FRAME AND LEAF
FASTENED WITH (4) #12-20 X 1/2" FH MACHINE SCREWS



12/17/2020

af c
AL-FAROOQ CORPORATION
ENGINEERS & PRODUCT DEVELOPMENT
9360 SUNSET DRIVE, SUITE 220 (C.A.N. 3538)
MIAMI, FLORIDA 33173 FAX. (305) 262-6978
TEL. (305) 264-8100

MONUMENTAL ALUMINUM OUTSWING DOOR (L.M.I.)
TUBELITE INC.
3056 Walker Ridge Dr. N.W., Suite G
Walker, MI 49544
Tel. 800-866-2227 Fax.

| | | | | |
|-------------|----------|----------|----|-------------|
| revisions: | no | date | by | description |
| | | | | |
| | | | | |
| | | | | |
| | | | | |
| date: | 08-22-19 | scale: | - | |
| dr. by: | TARIQ | chk. by: | | |
| drawing no. | 19-92T | | | |
| sheet | 9 of 15 | | | |

COMP-ANL\19-92T-TLI

LOCK OPTIONS:

3 POINT LOCK

MAX. LEAF HEIGHT = 96 IN.
 MAX. LEAF WIDTH = 48 IN.
 MAX. DESIGN LOAD = 70 PSF

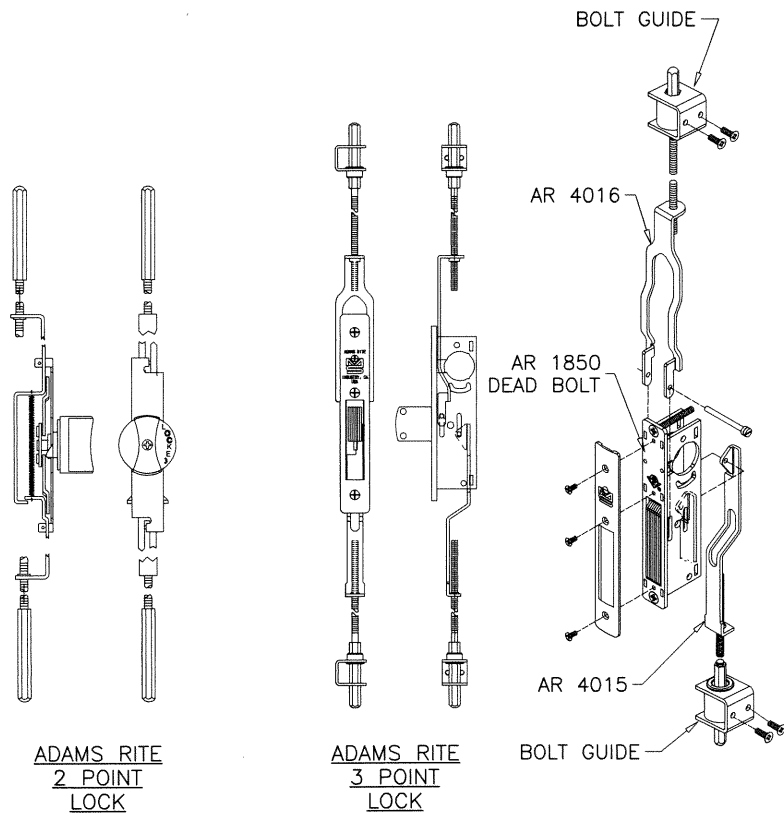
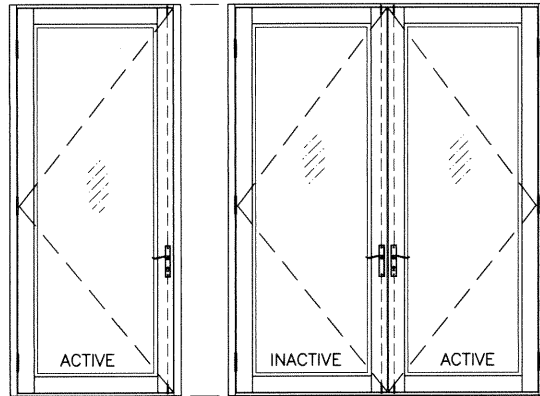
MAX. LEAF HEIGHT = 108 IN.
 MAX. LEAF WIDTH = 37-1/2 IN.
 MAX. DESIGN LOAD = 66 PSF

ACTIVE LEAF:

KEY OPERATED THREE POINT LOCK SYSTEM
 'MS1853A/4015/4016' AND 'MS1850S/4015/4016' BY 'ADAMS RITE'
 WITH CONCEALED FLUSH BOLTS AT TOP &
 BOTTOM OF LOCK STILE AND A THUMB TURN ON THE
 INTERIOR, LOCATED AT 40" FROM BOTTOM OF PANEL
 FASTENED WITH
 (2) #12-24 X 1/2" FH MACHINE SCREWS

INACTIVE LEAF:

MANUALLY OPERATED TWO POINT LOCK SYSTEM
 'MS1881' AND 'MS2180' BY 'ADAMS RITE'
 WITH CONCEALED FLUSH BOLTS AT TOP &
 BOTTOM OF LOCK STILE AND A THUMB TURN ON THE
 INTERIOR, LOCATED AT 40" FROM BOTTOM OF PANEL
 FASTENED WITH
 (2) #8-32 X 1/4" PH MACHINE SCREWS



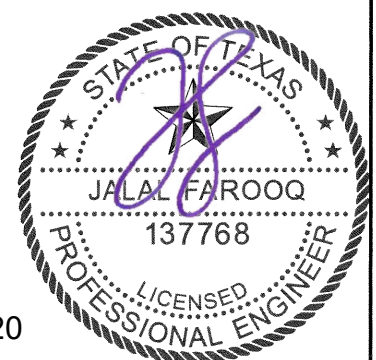
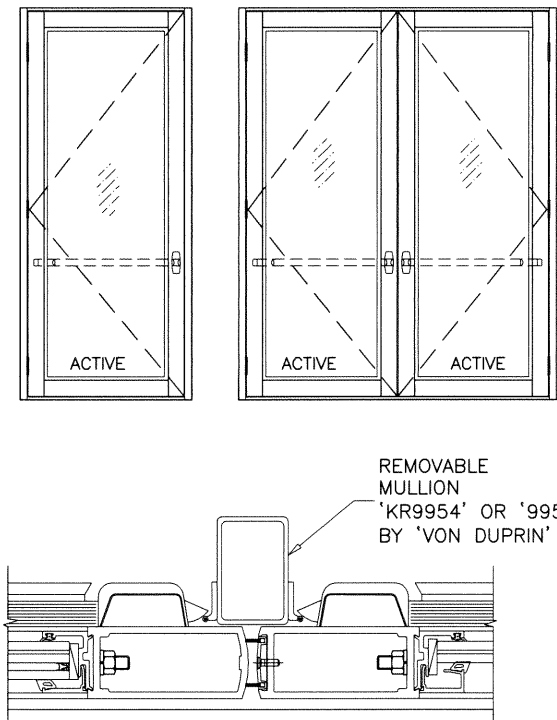
LOCK OPTIONS:

RIM PANIC EXIT DEVICES

PANIC EXIT DEVICE
 MAX. LEAF HEIGHT = 96 IN.
 MAX. LEAF WIDTH = 42 IN.
 MAX. DESIGN LOAD = 50 PSF

ACTIVE LEAF:

RIM PANIC EXIT DEVICE
 '98/99XP' BY 'VON DUPRIN'
 '33A/35A' BY 'VON DUPRIN'
 'FL3790' BY 'FIRST CHOICE'
 'WS AD8500' BY 'SARGENT'
 LOCATED AT 40" FROM BOTTOM
 FASTENED TO ACTIVE LEAF WITH WITH
 (6) 10-24 X 1-1/8" PH MS



12/17/2020

af c
AL-FAROOQ CORPORATION
 ENGINEERS & PRODUCT DEVELOPMENT
 9360 SUNSET DRIVE, SUITE 220 (C.A.N. 3538)
 MIAMI, FLORIDA 33173 TEL. (305) 262-6978
 TEL. (305) 264-8100 FAX. (305) 262-6978
 COMP-ANL\19-92T-TLI

MONUMENTAL ALUMINUM OUTSWING DOOR (L.M.I.)
TUBELITE INC.
 3056 Walker Ridge Dr. N.W., Suite G
 Walker, MI 49544
 Tel. 800-866-2227 Fax.

| | | | | |
|-------------|----------|----------|----|-------------|
| revisions: | no | date | by | description |
| date: | 08-22-19 | scale: | - | |
| dr. by: | TARIQ | chk. by: | | |
| drawing no. | 19-92T | | | |
| sheet | 10 of 15 | | | |

LOCK OPTIONS:

CVR PANIC EXIT DEVICES

OPTION #1:

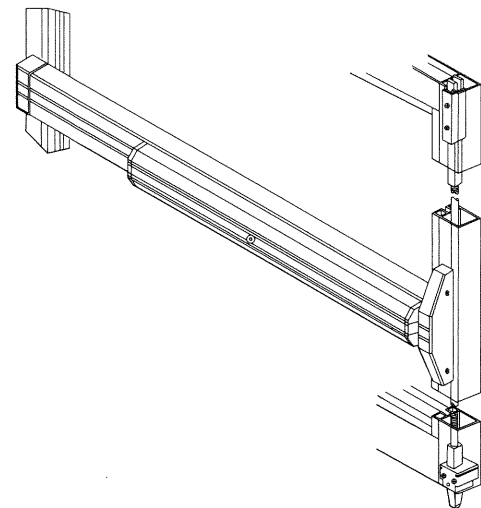
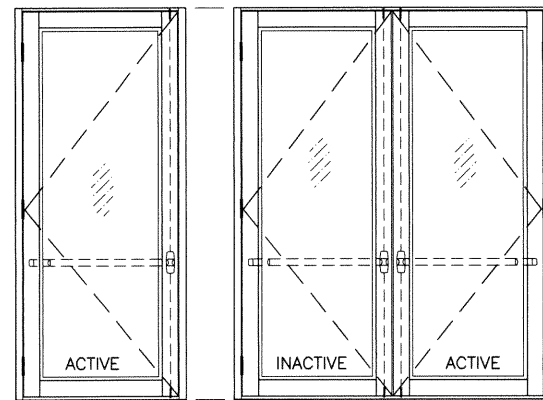
PANIC EXIT DEVICE

MAX. LEAF HEIGHT = 96 IN.
 MAX. LEAF WIDTH = 48 IN.
 MAX. DESIGN LOAD = 70 PSF

ACTIVE & INACTIVE LEAF:

CONCEALED VERTICAL ROD PANIC EXIT DEVICE
 '#2086' BY 'JACKSON PANIC SYSTEM'
 '3690FL' BY 'FIRST CHOICE'
 LOCATED AT 41" FROM SILL AT EACH LEAF.
 FASTENED WITH

- (1) #14 X 1" HH SELF DRILLING SCREW AT ONE END AND
- (2) #12-24 X 1/2" OH MACHINE SCREWS AT OTHER END



OPTION #2:

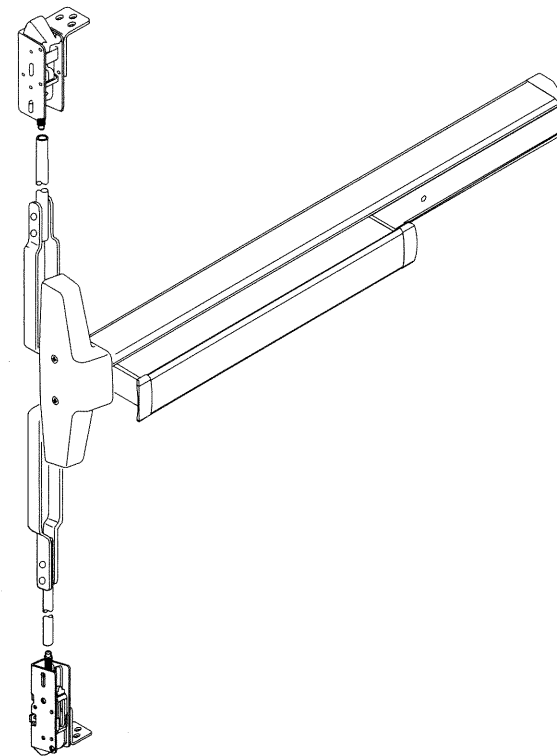
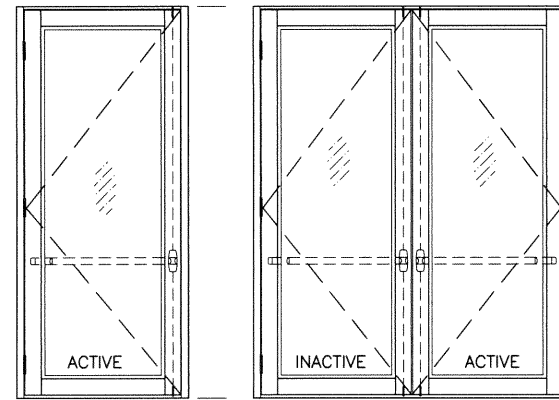
PANIC EXIT DEVICE

MAX. LEAF HEIGHT = 96 IN.
 MAX. LEAF WIDTH = 48 IN.
 MAX. DESIGN LOAD = 70 PSF

ACTIVE & INACTIVE LEAF:

CONCEALED VERTICAL ROD PANIC EXIT DEVICE
 'HH9947' BY 'VON DUPRIN'
 LOCATED AT 40" FROM SILL AT EACH LEAF.
 FASTENED WITH

- (2) #10-32 X 3/4" FH MACHINE SCREWS AT ONE END AND
- (2) #10-24 X 1/2" FH MACHINE SCREWS AT OTHER END



OPTION #3:

PANIC EXIT DEVICE

MAX. LEAF HEIGHT = 96 IN.
 MAX. LEAF WIDTH = 48 IN.
 MAX. DESIGN LOAD = 70 PSF

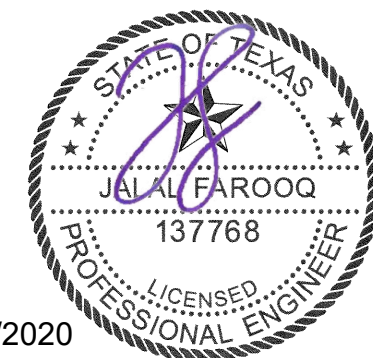
ACTIVE & INACTIVE LEAF:

CONCEALED VERTICAL ROD PANIC EXIT DEVICE
 '1690HH' BY 'FALCON'
 LOCATED AT 41" FROM SILL AT EACH LEAF.
 FASTENED WITH

- (1) #14 X 1" HH SELF DRILLING SCREW AT ONE END AND
- (2) #12-24 X 1/2" OH MACHINE SCREWS AT OTHER END

PANIC EXIT DEVICE

MAX. LEAF HEIGHT = 108 IN.
 MAX. LEAF WIDTH = 37-1/2 IN.
 MAX. DESIGN LOAD = 66 PSF



12/17/2020

af c
AL-FAROOQ CORPORATION
 ENGINEERS & PRODUCT DEVELOPMENT
 9360 SUNSET DRIVE, SUITE 220 (C.A.N. 3538)
 MIAMI, FLORIDA 33173 FAX. (305) 262-6978
 TEL. (305) 264-8100

MONUMENTAL ALUMINUM OUTSWING DOOR (L.M.I.)
TUBELITE INC.
 3056 Walker Ridge Dr. N.W., Suite G
 Walker, MI 49544
 Tel. 800-866-2227 Fax.

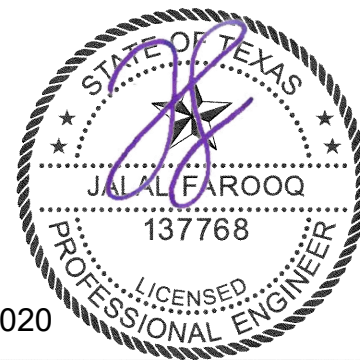
| revisions: | no | date | by | description |
|------------|----|------|----|-------------|
| | | | | |
| | | | | |
| | | | | |

date: 08-22-19
 scale: -
 dr. by: TARIQ
 chk. by:

drawing no.
19-92T
 sheet 11 of 15

COMP-ANL\19-92T-TL

| ITEM # | PART # | REQD. | DESCRIPTION | MATERIAL | MANF./SUPPLIER/REMARKS |
|--------|--------------|----------|--|-----------|-------------------------|
| 1 | E34224 | 1 | DOOR FRAME HEAD (STANDARD) | 6063-T6 | - |
| 1A | E4TB111 | 1 | DOOR FRAME HEAD (NARROW) | 6063-T6 | - |
| 1B | E34125 | 1 | DOOR FRAME HEAD (CONCEALED CLOSERS) | 6063-T6 | - |
| 1C | P4441 | 1 | FRAME HEAD (CONCEALED CLOSERS) CORNER KEY | 6063-T6 | - |
| 1D | E6504 | 1 | HEAD (CONCEALED CLOSERS) DOOR STOP | 6063-T6 | - |
| 1E | E2298 | 1 | HEAD (CONCEALED CLOSERS) DOOR STOP COVER | 6063-T6 | - |
| 2 | E34144 | 2 | DOOR FRAME JAMB (STANDARD) | 6063-T6 | - |
| 2A | E4TB11 | 2 | DOOR FRAME JAMB (NARROW) | 6063-T6 | - |
| 3 | E34242 | 2 | JAMB SHEAR CLIP (STANDARD) | 6063-T6 | - |
| 4 | E3550 | 1 | THRESHOLD | 6063-T6 | - |
| 5 | E3029 | 1/ LEAF | LEAF TOP RAIL (MEDIUM) | 6063-T6 | - |
| 5A | E1051 | 1/ LEAF | LEAF TOP RAIL (WIDE) | 6063-T6 | - |
| 6 | E2954 | 1/ LEAF | BOTTOM RAIL | 6063-T6 | - |
| 7 | E1397 | 1/ LEAF | LEAF HINGE/LOCK STILE (MEDIUM) | 6063-T6 | - |
| 7A | E2937 | 1/ LEAF | LEAF HINGE/LOCK STILE (WIDE) | 6063-T6 | - |
| 8 | E3245 | 1/ LEAF | LEAF ALT. HINGE/LOCK STILE (MEDIUM) | 6063-T6 | - |
| 8A | E3246 | 1/ LEAF | LEAF ALT. HINGE/LOCK STILE (WIDE) | 6063-T6 | - |
| 9 | E3027 | 1/ LEAF | LEAF ACTIVE STILE (MEDIUM) | 6063-T6 | - |
| 9A | E2938 | 1/ LEAF | LEAF ACTIVE STILE (WIDE) | 6063-T6 | - |
| 10 | E1154 | 1/ LEAF | LEAF INACTIVE STILE (MEDIUM) | 6063-T6 | - |
| 10A | E1155 | 1/ LEAF | LEAF INACTIVE STILE (WIDE) | 6063-T6 | - |
| 11 | E2944 | AS REQD. | MID RAIL | 6063-T6 | OPTIONAL |
| 11A | E2945 | AS REQD. | MID RAIL | 6063-T6 | OPTIONAL |
| 11B | E2946 | AS REQD. | MID RAIL | 6063-T6 | OPTIONAL |
| 12 | E6510 | AS REQD. | DOOR STOP BASE (STANDARD) | 6063-T6 | - |
| 12A | E6500 | AS REQD. | DOOR STOP BASE (NARROW) | 6063-T6 | - |
| 13 | E6505 | AS REQD. | DOOR STOP (STANDARD) | 6063-T6 | - |
| 13A | E6501 | AS REQD. | DOOR STOP (NARROW) | 6063-T6 | - |
| 14 | E1152 | AS REQD. | ASTRAGAL W'STRIP ADAPTER | 6063-T6 | - |
| 15 | E6533 | 4/ LEAF | EXTERIOR GLASS STOP (LAM. GLASS) | 6063-T6 | - |
| 16 | E6523 | 4/ LEAF | EXTERIOR GLASS STOP (INSUL. LAM. GLASS) | 6063-T6 | - |
| 17 | E6532 | 4/ LEAF | INTERIOR GLASS STOP (DRY GASKET) | 6063-T6 | - |
| 18 | E6512 | 4/ LEAF | INTERIOR GLASS STOP (GLAZING TAPE) | 6063-T6 | - |
| 19 | E6522 | 4/ LEAF | INTERIOR GLASS STOP (SILICONE) | 6063-T6 | - |
| 20 | P2908 | 4/ LEAF | EXTERIOR GLAZING GASKET (LEVEL D IMPACT) | EPDM | - |
| 20A | P2901 | 4/ LEAF | EXTERIOR GLAZING GASKET (LEVEL E IMPACT) | EPDM | - |
| 21 | P0017 | 4/ LEAF | INTERIOR GLAZING GASKET | EPDM | - |
| 22 | 3M VHB | 4/ LEAF | INTERIOR GLAZING TAPE (.090" X .750") | FOAM | - |
| 23 | P6552 | 4/ LEAF | INTERIOR SPACER TAPE | FOAM | - |
| 25 | P1912 | 2/ LITE | SETTING BLOCK AT 6" FROM ENDS | EPDM | DUROMETER 80±5 SHORE A |
| 26 | P6296 | AS REQD. | FRAME HEAD/JAMB BULB W'STRIPPING | VINYL | - |
| 27 | P3450 | AS REQD. | FRAME SILL BULB W'STRIPPING | VINYL | - |
| 28 | P938 | AS REQD. | ASTRAGAL PILE W'STRIPPING | WOOL | ULTRAFAB |
| 29 | #10 X 5/8" | AS REQD. | ASTRAGAL ADAPTER FASTENERS, AT 12" O.C. | ST. STEEL | FH SELF DRILLING SCREWS |
| 30 | #10 X 1/2" | AS REQD. | GLASS STOP FASTENERS, AT 2" FROM ENDS & 12" O.C. | ST. STEEL | FH SELF DRILLING SCREWS |
| 31 | #12 X 1-1/2" | AS REQD. | FRAME ASSEMBLY FASTENERS | ST. STEEL | HH SELF DRILLING SCREWS |
| - | - | - | - | - | - |



12/17/2020

afc
AL-FAROOQ CORPORATION
ENGINEERS & PRODUCT DEVELOPMENT
9360 SUNSET DRIVE, SUITE 220 (C.A.N. 3538)
MIAMI, FLORIDA 33173
TEL. (305) 264-8100 FAX. (305) 262-6978
COMP-ANL \ 19-92T-TLI

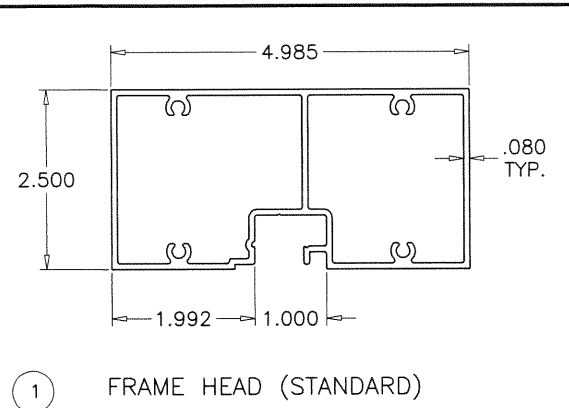
MONUMENTAL ALUMINUM OUTSWING DOOR (L.M.I.)
TUBELITE INC.
3056 Walker Ridge Dr. N.W., Suite G
Walker, MI 49544
Tel. 800-866-2227 Fax.

revisions:

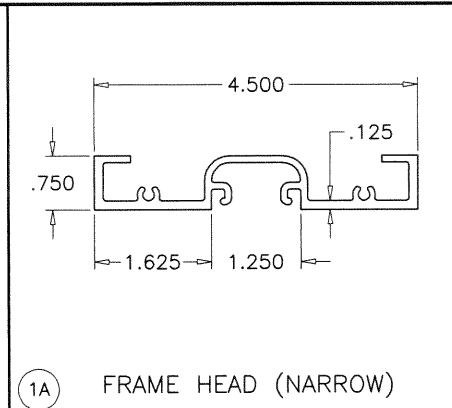
| no | date | description |
|----|------|-------------|
| | | |
| | | |
| | | |
| | | |

date: 08-22-19
scale: 3/8" = 1"
dr. by: TARIQ
chk. by:

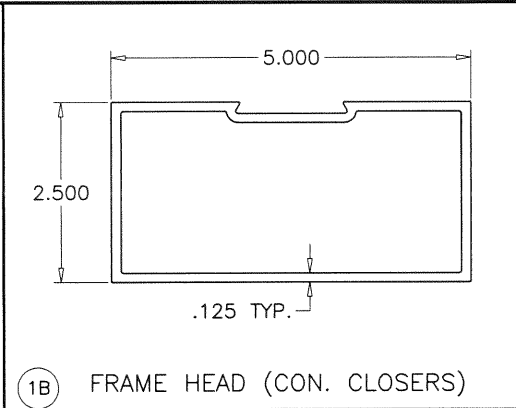
drawing no.
19-92T
sheet 12 of 15



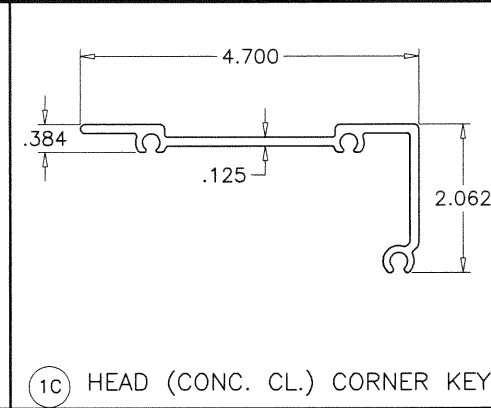
1 FRAME HEAD (STANDARD)



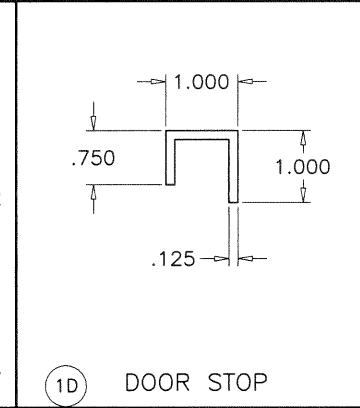
1A FRAME HEAD (NARROW)



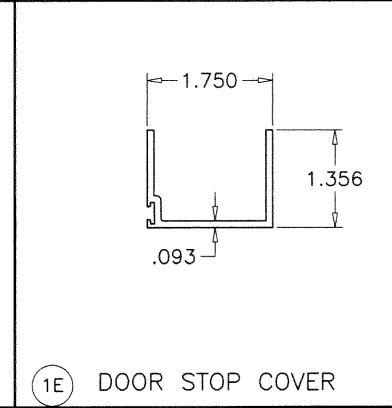
1B FRAME HEAD (CON. CLOSERS)



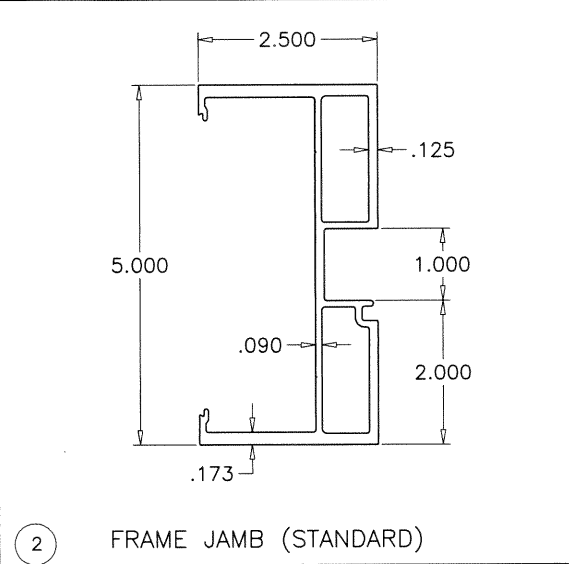
1C HEAD (CONC. CL.) CORNER KEY



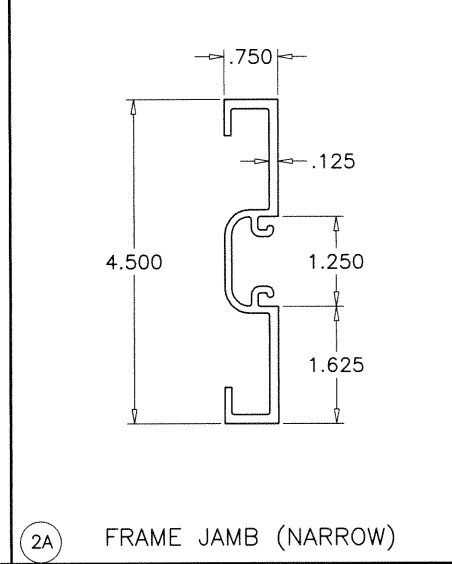
1D DOOR STOP



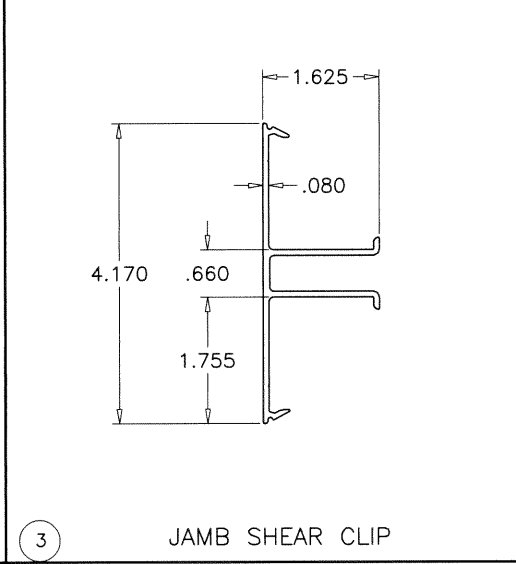
1E DOOR STOP COVER



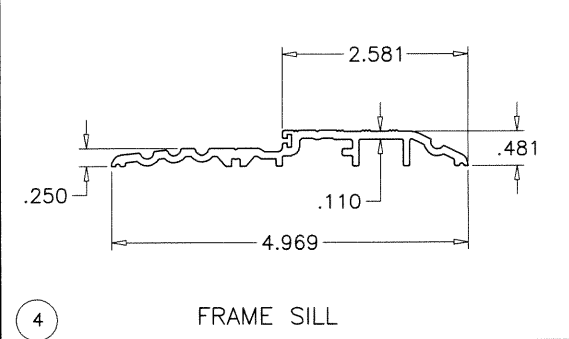
2 FRAME JAMB (STANDARD)



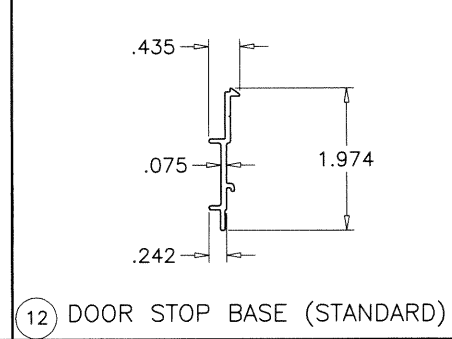
2A FRAME JAMB (NARROW)



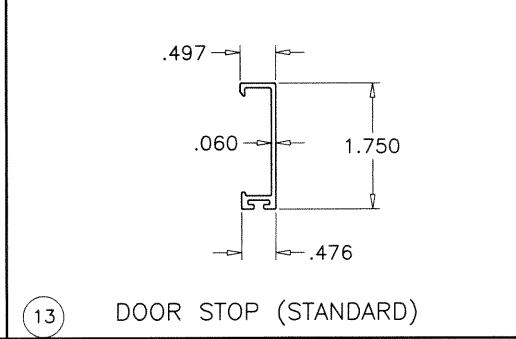
3 JAMB SHEAR CLIP



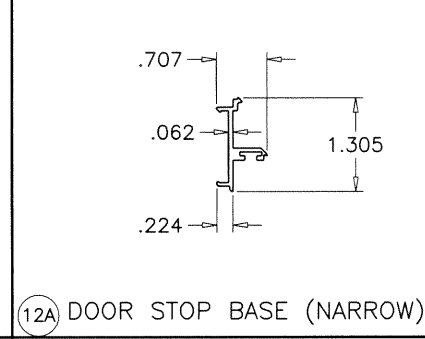
4 FRAME SILL



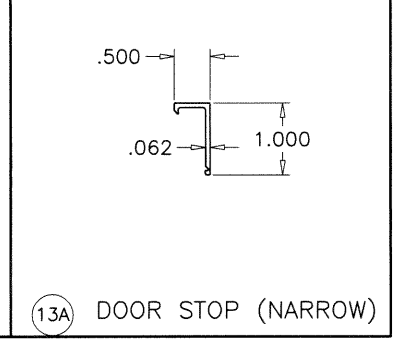
12 DOOR STOP BASE (STANDARD)



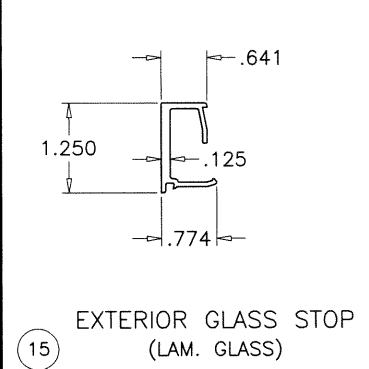
13 DOOR STOP (STANDARD)



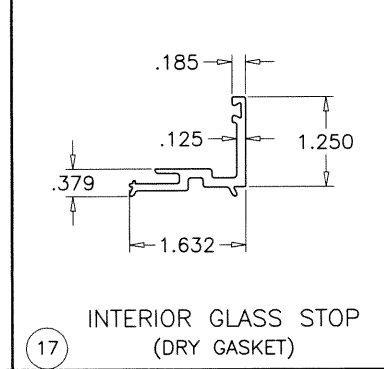
12A DOOR STOP BASE (NARROW)



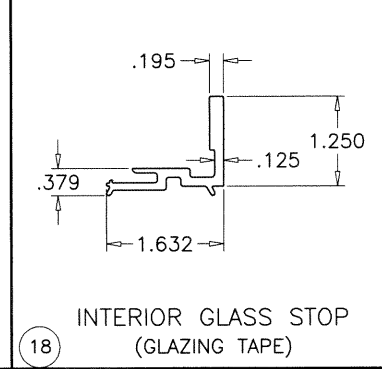
13A DOOR STOP (NARROW)



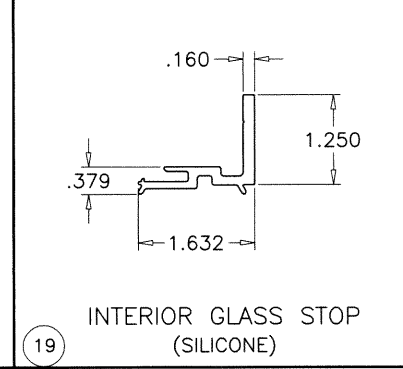
15 EXTERIOR GLASS STOP (LAM. GLASS)



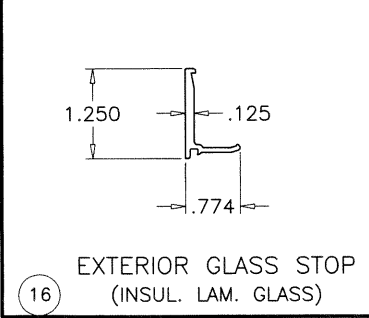
17 INTERIOR GLASS STOP (DRY GASKET)



18 INTERIOR GLASS STOP (GLAZING TAPE)



19 INTERIOR GLASS STOP (SILICONE)



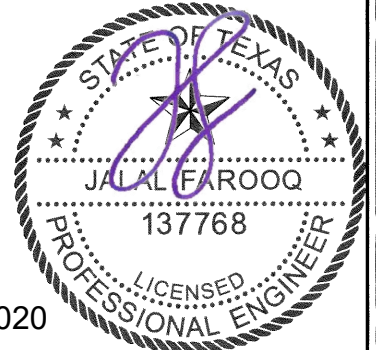
16 EXTERIOR GLASS STOP (INSUL. LAM. GLASS)

af c
AL-FAROOQ CORPORATION
 ENGINEERS & PRODUCT DEVELOPMENT
 9360 SUNSET DRIVE, SUITE 220
 MIAMI, FLORIDA 33173 (C.A.N. 3538)
 TEL. (305) 264-8100 FAX. (305) 262-6978
 COMP-ANL\19-92T-TL

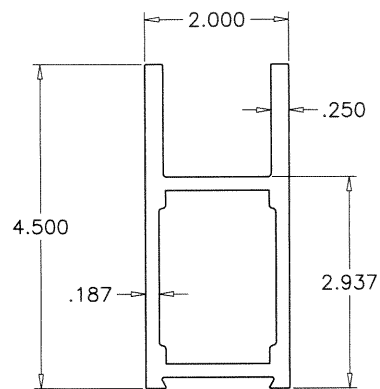
MONUMENTAL ALUMINUM OUTSWING DOOR (L.M.I.)
TUBELITE INC.
 3056 Walker Ridge Dr. N.W., Suite G
 Walker, MI 49544
 Tel. 800-866-2227 Fax.

| revisions: | |
|------------|---------------------|
| no | date by description |
| | |
| | |
| | |
| | |
| | |

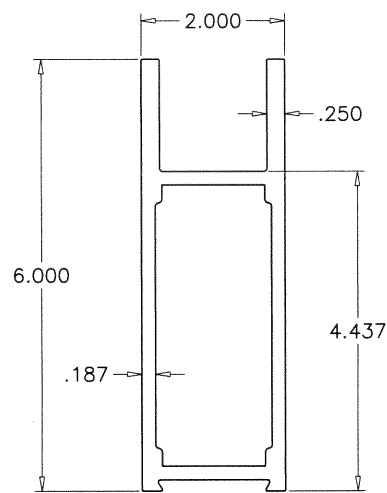
date: 08-22-19
 scale: 3/8" = 1"
 dr. by: TARIQ
 chk. by:
 drawing no. 19-92T
 sheet 13 of 15



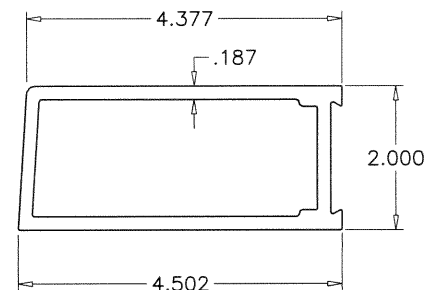
12/17/2020



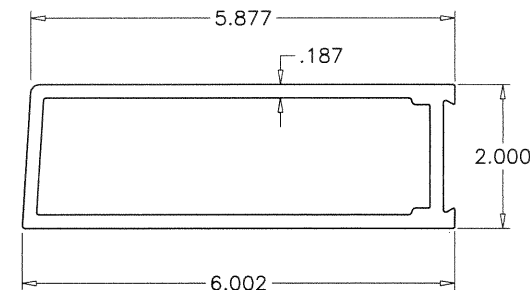
5 TOP RAIL (MEDIUM)



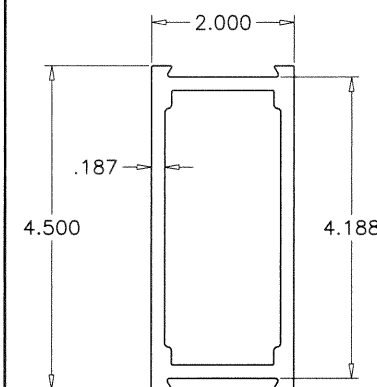
5A TOP RAIL (WIDE)



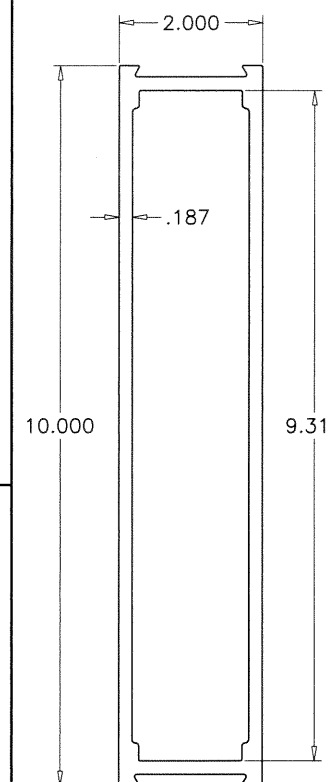
7 HINGE/LOCK STILE (MEDIUM)



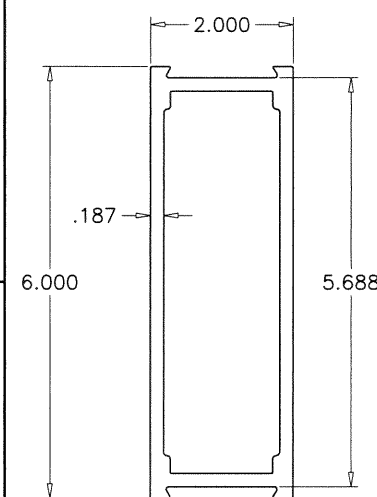
7A HINGE/LOCK STILE (WIDE)



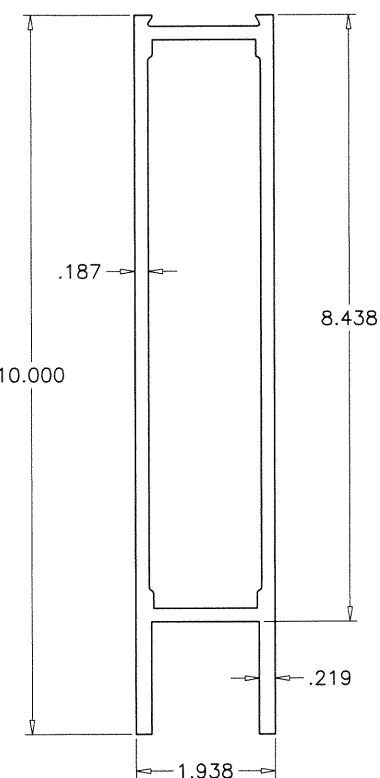
11 MID RAIL



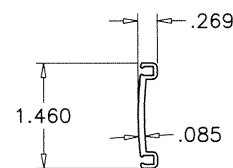
11B MID RAIL



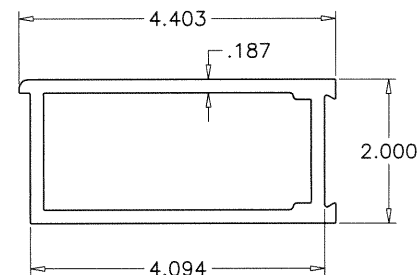
11A MID RAIL



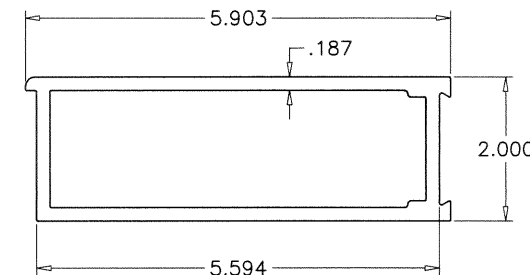
6 BOTTOM RAIL



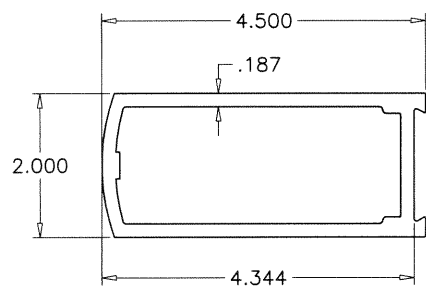
14 ASTRAGAL W'STRIP ADAPTER



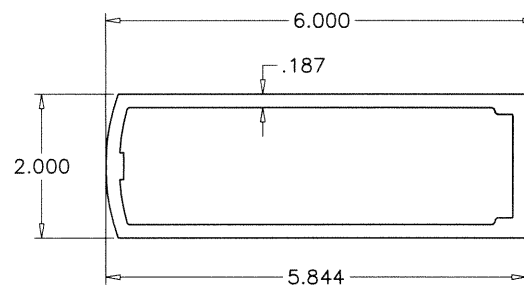
8 ALT. HINGE/LOCK STILE (MEDIUM)



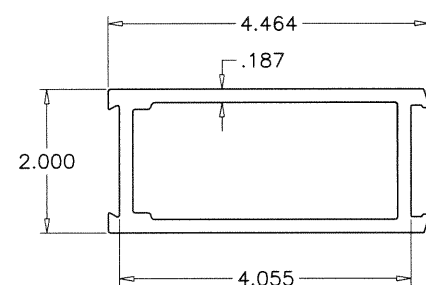
8A ALT. HINGE/LOCK STILE (WIDE)



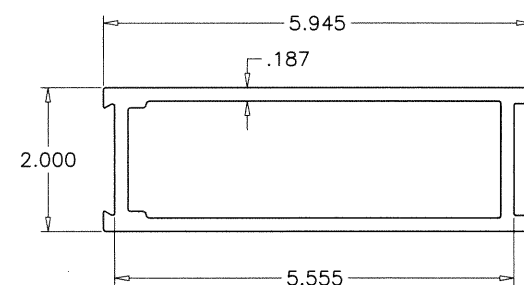
9 ACTIVE STILE (MEDIUM)



9A ACTIVE STILE (WIDE)



10 INACTIVE STILE (MEDIUM)



10A INACTIVE STILE (WIDE)

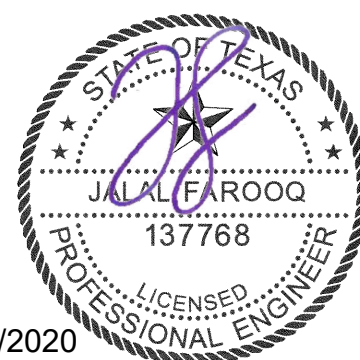
af c
AL-FAROOQ CORPORATION
 ENGINEERS & PRODUCT DEVELOPMENT
 9360 SUNSET DRIVE, SUITE 220 (C.A.N. 3538)
 MIAMI, FLORIDA 33173 TEL. (305) 262-6978
 FAX. (305) 264-8100

MONUMENTAL ALUMINUM OUTSWING DOOR (L.M.I.)
TUBELITE INC.
 3056 Walker Ridge Dr. N.W., Suite G
 Walker, MI 49544
 Tel. 800-866-2227 Fax.

| no | date | description |
|----|------|-------------|
| | | |
| | | |
| | | |

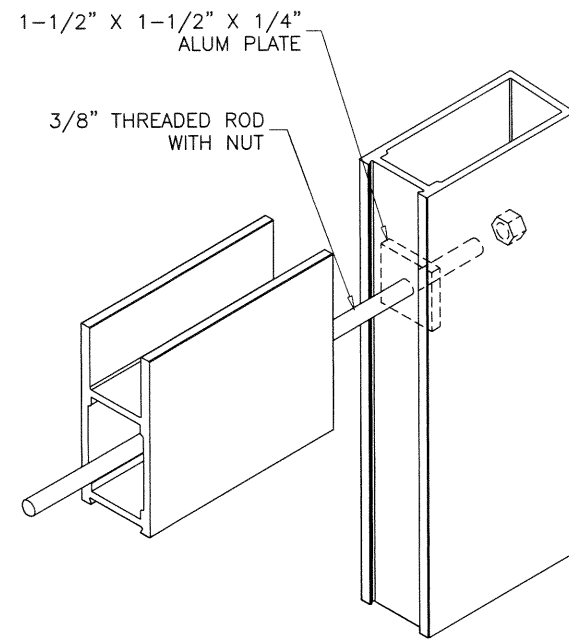
revisions:
 date: 08-22-19
 scale: 3/8" = 1"
 dr. by: TARIQ
 chk. by:

drawing no.
19-92T
 sheet 14 of 15

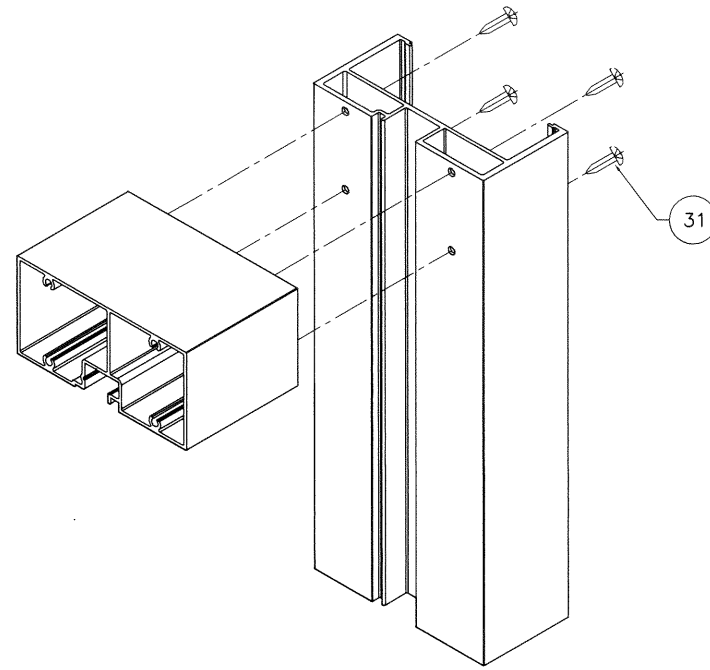


12/17/2020

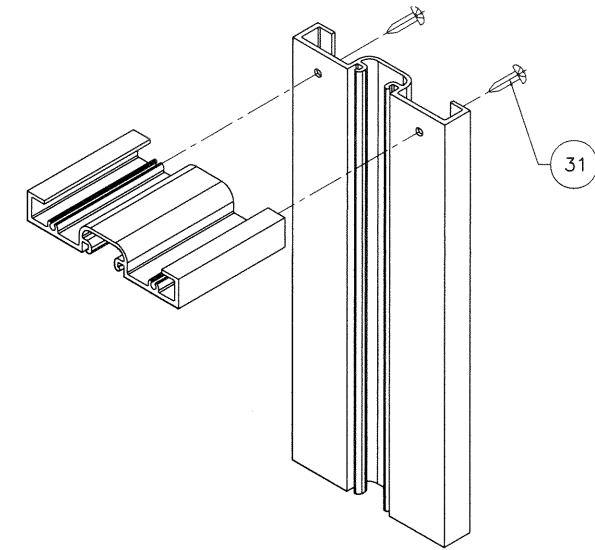
COMP-ANL\19-92T-TL



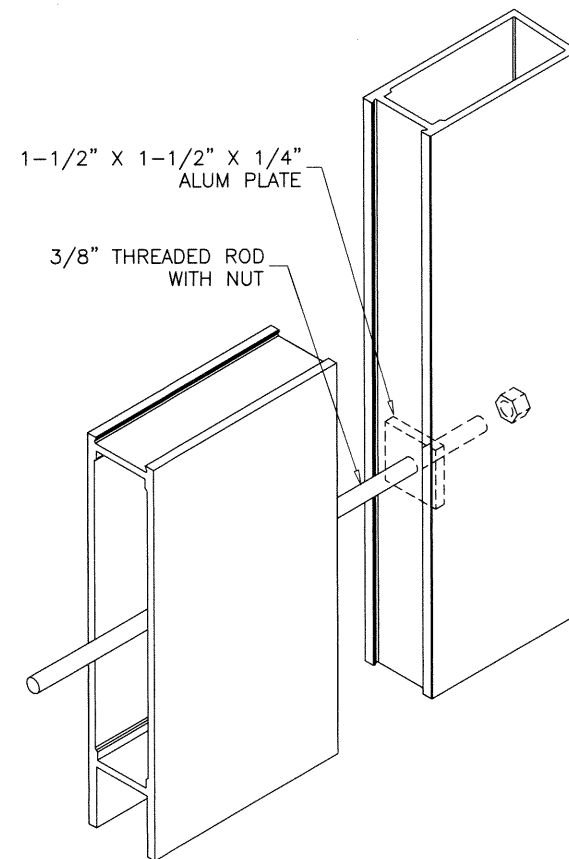
LEAF TOP CORNER



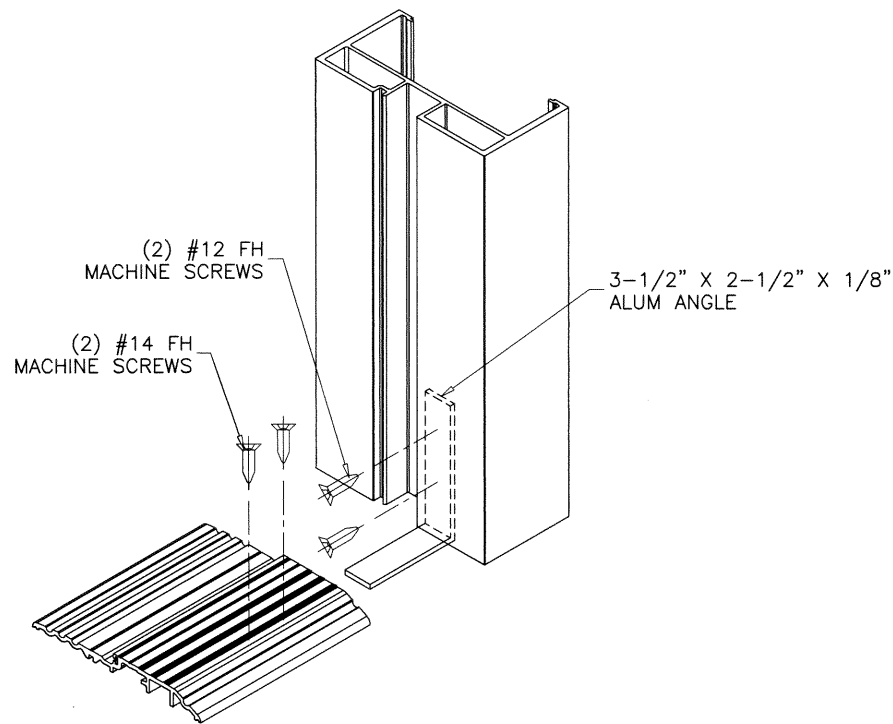
FRAME (STD.) TOP CORNER



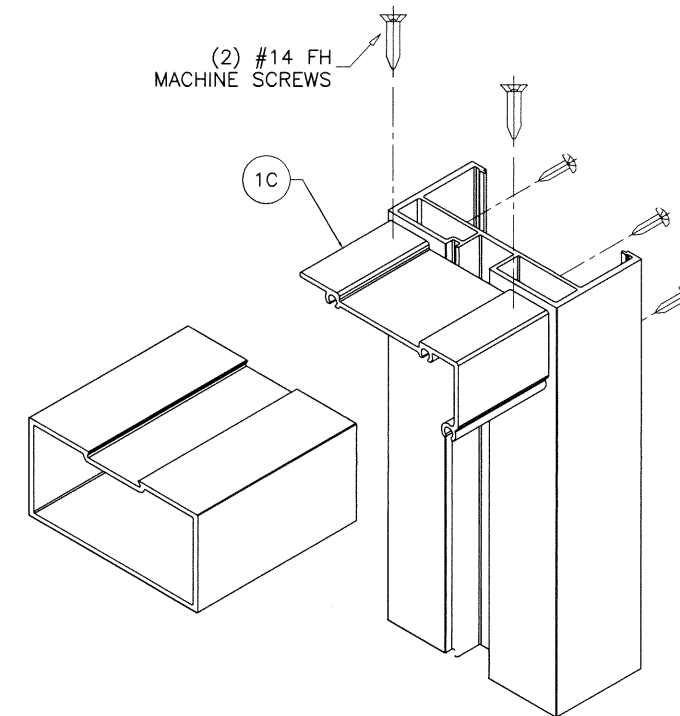
FRAME (NARROW) TOP CORNER



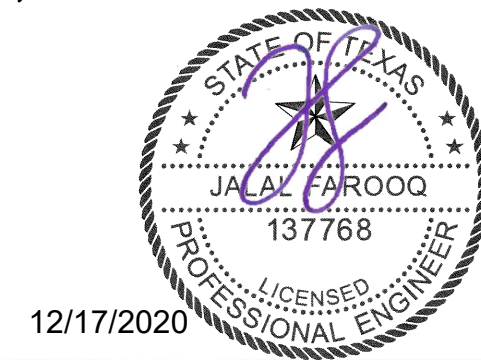
LEAF BOTTOM CORNER



FRAME (STD.) BOTTOM CORNER



FRAME (CON. CL.) TOP CORNER



12/17/2020

afc

AL-FAROOQ CORPORATION
 ENGINEERS & PRODUCT DEVELOPMENT
 9360 SUNSET DRIVE, SUITE 220
 MIAMI, FLORIDA 33173 (C.A.N. 3538)
 TEL. (305) 264-8100 FAX. (305) 262-6978
 COMP-ANL\19-92T-TL

MONUMENTAL ALUMINUM OUTSWING DOOR (L.M.I.)

TUBELITE INC.
 3056 Walker Ridge Dr. N.W., Suite G
 Walker, MI 49544
 Tel. 800-866-2227 Fax.

| revisions: | no | date | by | description |
|------------|----|------|----|-------------|
| | | | | |
| | | | | |
| | | | | |

date: 08-22-19
 scale: 1/4" = 1"
 dr. by: TARIQ
 chk. by:

drawing no.

19-92T

sheet 15 of 15