

REVISIONS			
REV	DESCRIPTION	DATE	APPROVED
A	REVISED PER NEW STANDARDS	08/05/2020	R.L.
B	REVISED TO ADD INSTALLATION DETAILS	06/22/2022	R.L.

NOTES:

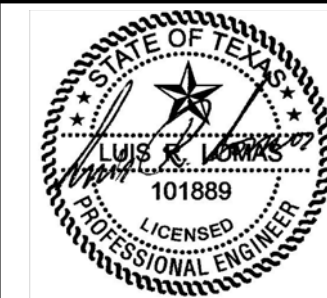
- THE PRODUCT SHOWN HEREIN IS DESIGNED AND MANUFACTURED TO COMPLY WITH REQUIREMENTS OF THE 2018 IBC AND 2018 IRC.
- WOOD FRAMING AND MASONRY OPENING TO BE DESIGNED AND ANCHORED TO PROPERLY TRANSFER ALL LOADS TO STRUCTURE. FRAMING AND MASONRY OPENING IS THE RESPONSIBILITY OF THE ARCHITECT OR ENGINEER OF RECORD.
- WHERE SHIM OR BUCK THICKNESS IS LESS THAN 1-1/2" WINDOW UNITS MUST BE ANCHORED THROUGH THE FRAME IN ACCORDANCE WITH MANUFACTURER'S PUBLISHED INSTALLATION INSTRUCTIONS. ANCHORS SHALL BE SECURELY FASTENED DIRECTLY INTO MASONRY, CONCRETE OR OTHER STRUCTURAL SUBSTRATE MATERIAL.
- WHERE WOOD BUCK THICKNESS IS 1-1/2" OR GREATER, BUCK SHALL BE SECURELY FASTENED TO MASONRY, CONCRETE OR OTHER STRUCTURAL SUBSTRATE. WINDOW UNITS MAY BE ANCHORED THROUGH FRAME TO SECURED WOOD BUCK IN ACCORDANCE WITH MANUFACTURER'S PUBLISHED INSTALLATION INSTRUCTIONS.
- WHERE 1X BUCK IS NOT USED DISSIMILAR MATERIALS MUST BE SEPARATED WITH APPROVED COATING OR MEMBRANE. SELECTION OF COATING OR MEMBRANE IS THE RESPONSIBILITY OF THE ARCHITECT OR ENGINEER OF RECORD.
- BUCKS SHALL EXTEND BEYOND WINDOW INTERIOR FACE SO THAT FULL FRAME SUPPORT IS PROVIDED.
- FOR FIN INSTALLATION SHIM AS NEEDED. FOR FRAME INSTALLATION SHIM AS REQUIRED AT EACH ANCHOR LOCATION WITH LOAD BEARING SHIM. SHIM WHERE SPACE OF 1/16" OR GREATER OCCURS. MAXIMUM ALLOWABLE SHIM STACK TO BE 1/4".
- SHIMS SHALL BE LOCATED, APPLIED AND MADE FROM MATERIALS AND THICKNESS CAPABLE OF SUSTAINING APPLICABLE LOADS.
- WIND LOAD DURATION FACTOR Cd=1.6 WAS USED FOR WOOD ANCHOR CALCULATIONS.
- FRAME MATERIAL: EXTRUDED ALUMINUM 6063-T6.
- UNITS MUST BE GLAZED PER ASTM E1300, SEE SHEET 5 FOR GLASS DETAILS.
- APPROVED IMPACT PROTECTIVE SYSTEM IS NOT REQUIRED FOR THIS PRODUCT IN WIND BORNE DEBRIS REGIONS.
- FOR ANCHORING THROUGH FRAME INTO WOOD FRAMING OR 2X BUCK USE #14 WOOD SCREWS WITH SUFFICIENT LENGTH TO ACHIEVE A 1 7/16" MINIMUM EMBEDMENT INTO SUBSTRATE. LOCATE ANCHORS AS SHOWN IN ELEVATIONS AND INSTALLATION DETAILS.

- FOR ANCHORING THROUGH FRAME INTO MASONRY/CONCRETE USE 1/4" TAPCONS WITH SUFFICIENT LENGTH TO ACHIEVE A 1 1/4" MINIMUM EMBEDMENT INTO SUBSTRATE WITH 2" MINIMUM EDGE DISTANCE. LOCATE ANCHORS AS SHOWN IN ELEVATIONS AND INSTALLATION DETAILS.
- FOR ANCHORING THROUGH FRAME INTO METAL STRUCTURE USE #14 SMS OR SELF DRILLING SCREWS WITH SUFFICIENT LENGTH TO ACHIEVE 3 THREADS MINIMUM BEYOND STRUCTURE INTERIOR WALL. LOCATE ANCHORS AS SHOWN IN ELEVATIONS AND INSTALLATION DETAILS.
- ALL FASTENERS TO BE CORROSION RESISTANT.
- INSTALLATION ANCHORS SHALL BE INSTALLED IN ACCORDANCE WITH ANCHOR MANUFACTURER'S INSTALLATION INSTRUCTIONS AND ANCHORS SHALL NOT BE USED IN SUBSTRATES WITH STRENGTHS LESS THAN THE MINIMUM STRENGTH SPECIFIED BELOW:
  - WOOD – MINIMUM SPECIFIC GRAVITY OF G=0.42
  - CONCRETE – MINIMUM COMPRESSIVE STRENGTH OF 3,192 PSI.
  - MASONRY – STRENGTH CONFORMANCE TO ASTM C-90, GRADE N, TYPE 1 (OR GREATER).
  - METAL STRUCTURE: STEEL 18GA, 33KSI OR ALUMINUM 6063-T5 1/8" THICK MINIMUM

TABLE OF CONTENTS	
SHEET NO.	DESCRIPTION
1	NOTES
2	ELEVATION
3	ANCHOR LAYOUT & DETAILS
4 – 6	CROSS SECTIONS AND GLAZING DETAILS
7 – 10	INSTALLATION DETAILS
11	COMPONENTS

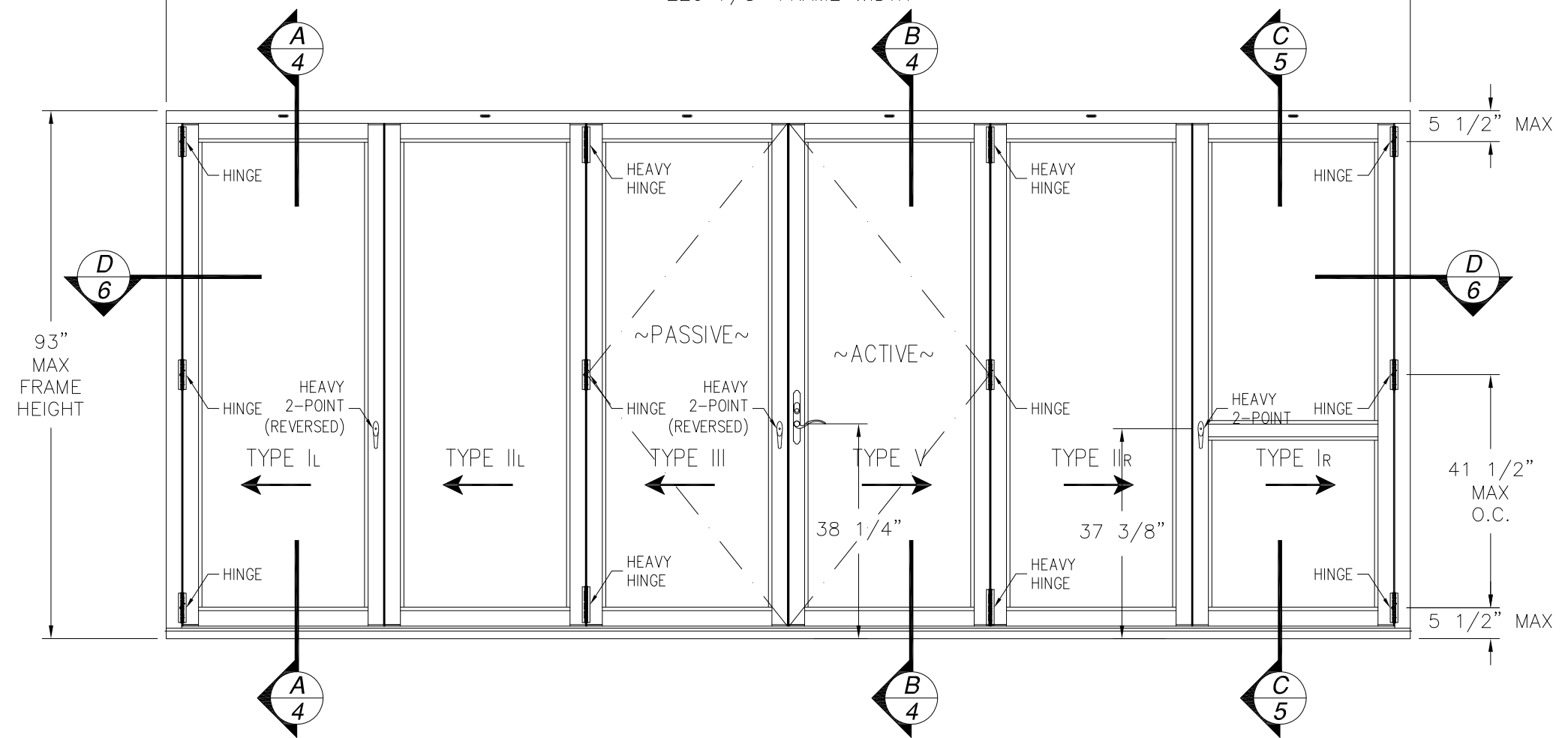
<b>SOLAR INNOVATIONS, INC.</b> 31 ROBERTS RD. PINE GROVE, PA 17963		
SI 3350 IMPACT FGW 3' X 7.6' PANEL OUTFOLD NON-REINFORCED NOTES		
DRAWN: N.G.	DWG NO. 08-02664	REV B
SCALE NTS	DATE 04/01/15	SHEET 1 OF 11
L. ROBERTO LOMAS P.E. 400 S. PALM AVE, INDIALANTIC, FL 32903 434-688-0609 rllomas@lrlomaspe.com		

SIGNED: 06/22/2022



Luis R. Lomas P.E.  
 TX No.: 101889  
 Firm No: F-23130

220 7/8" FRAME WIDTH



REVISIONS			
REV	DESCRIPTION	DATE	APPROVED
A	REVISED PER NEW STANDARDS	08/05/2020	R.L.
B	REVISED TO ADD INSTALLATION DETAILS	06/22/2022	R.L.

- NOTES:
- DRAIN TUBE 1 1/2" I.D. AT 10", 28 1/2" FROM EACH CORNER AND (1) AT MIDSPAN OF SILL FACE.
  - PANEL SIZE: 35 5/8" X 89 1/2"
  - D.L.O.: 28 5/8" X 82 1/2"

**SI 33350 IMPACT FGW 3' X 7.6' PANEL**  
EXTERIOR VIEW

DESIGN PRESSURE RATING	IMPACT RATING
±55.0PSF	LARGE AND SMALL MISSILE IMPACT

MISSILE LEVEL D, WIND ZONE 4  
MULTIPLE PANELS CONFIGURATIONS ARE APPROVED AS LONG AS INDIVIDUAL PANEL SIZE DOES NOT EXCEED 35 5/8" WIDTH AND 89 1/2" HEIGHT

SIGNED: 06/22/2022

HARDWARE SCHEDULE	
A.	(4) POINT LOCK SYSTEM AT 34.5" FROM BOTTOM LOCK STILE
B.	(2) POINT SINGLE HANDLE THROW-BOLT AT 34.5" FROM BOTTOM LOCK STILE
C.	METAL KEEPER AT LOCK LOCATIONS
D.	EXTRUDED ALUMINUM THROW-BOLTS AT HEAD & SILL
E.	5 1/4" BUTT-TYPE HINGE AT TOP, BOTTOM & MISPAN OF EACH JAMB
F.	TROLLEY SYSTEM (TOP LOAD)
G.	EXTRUDED ALUMINUM WEATHERSTRIP HOLDER AT PASSIVE MEETING STILE
H.	(2) EXTRUDED ALUMINUM PLATES AT TOP & BOTTOM OF EACH STILE

SOLAR INNOVATIONS, INC.  
31 ROBERTS RD.  
PINE GROVE, PA 17963

SI 3350 IMPACT FGW 3' X 7.6' PANEL OUTFOLD  
NON-REINFORCED  
ELEVATION

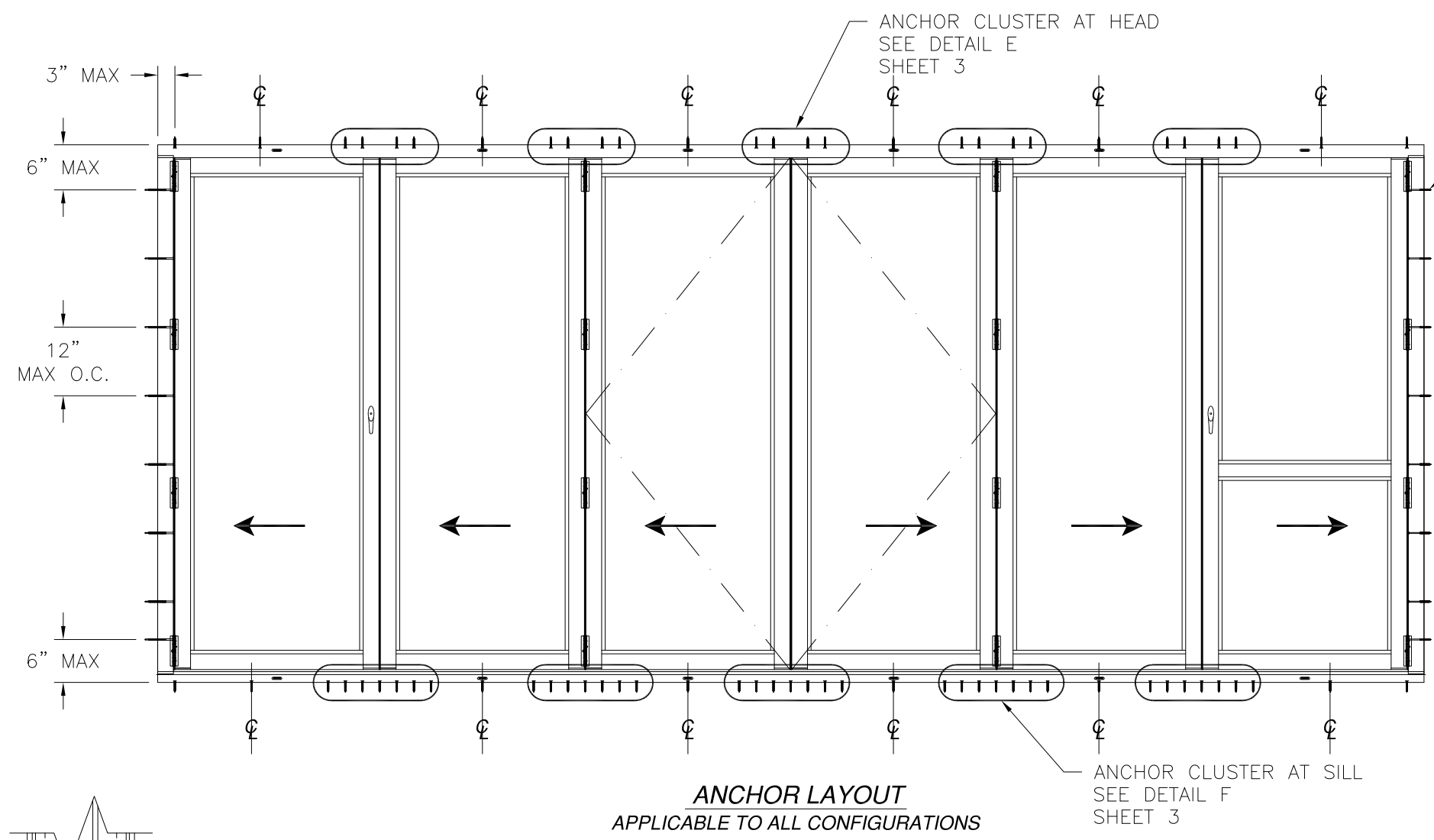
DRAWN: N.G.	DWG NO. 08-02664	REV B
SCALE NTS	DATE 04/01/15	SHEET 2 OF 11

L. ROBERTO LOMAS P.E.  
400 S. PALM AVE, INDIALANTIC, FL 32903  
434-688-0609 rllomas@rlomaspe.com

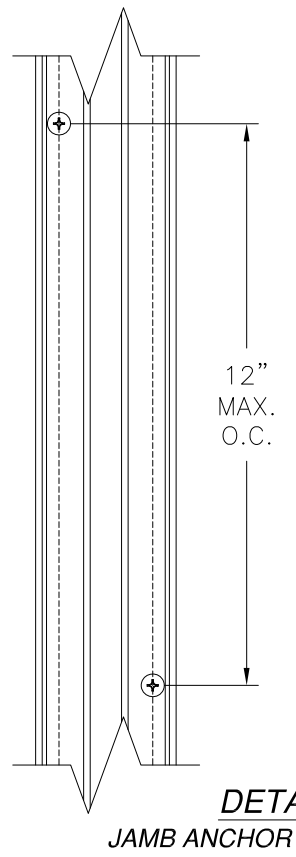
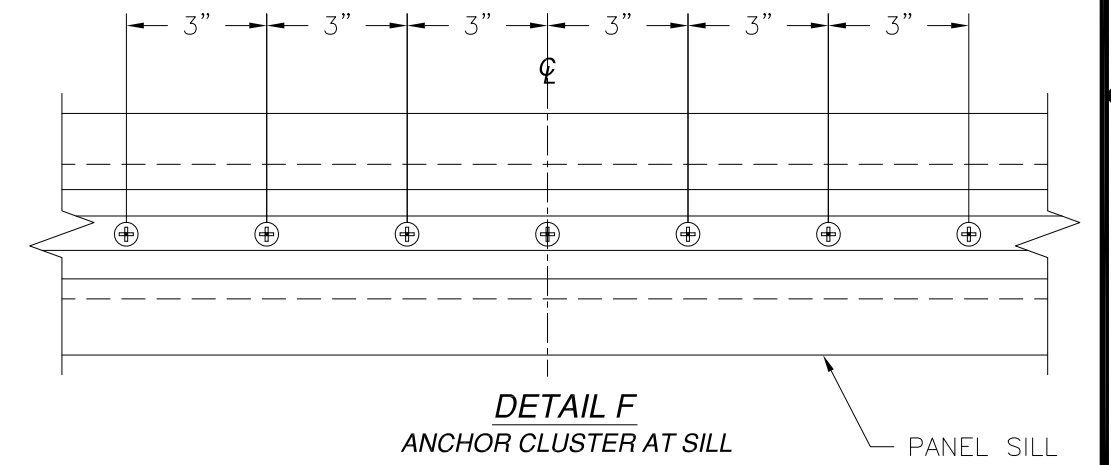
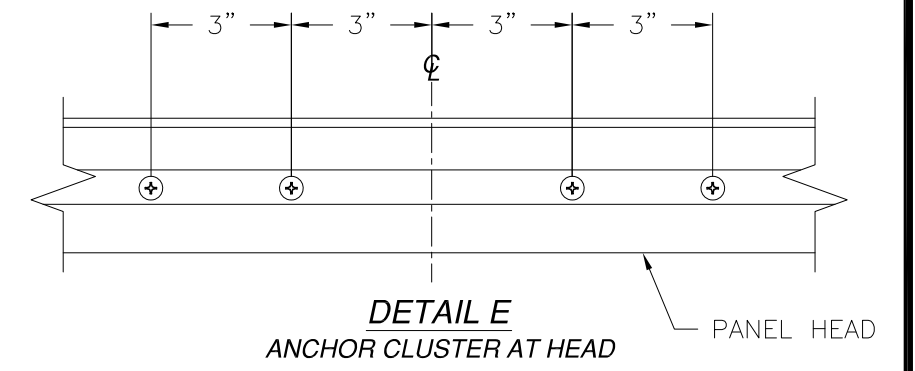


Luis R. Lomas P.E.  
TX No.: 101889  
Firm No: F-23130

REVISIONS			
REV	DESCRIPTION	DATE	APPROVED
A	REVISED PER NEW STANDARDS	08/05/2020	R.L.
B	REVISED TO ADD INSTALLATION DETAILS	06/22/2022	R.L.



ANCHORS AT JAMBS  
TO BE STAGGERED  
SEE DETAIL G  
SHEET 3



**ANCHOR LAYOUT**  
APPLICABLE TO ALL CONFIGURATIONS

ANCHOR CLUSTER AT SILL  
SEE DETAIL F  
SHEET 3

SIGNED: 06/22/2022

**SOLAR INNOVATIONS, INC.**  
31 ROBERTS RD.  
PINE GROVE, PA 17963

SI 3350 IMPACT FGW 3' X 7.6' PANEL OUTFOLD  
NON-REINFORCED  
ANCHOR LAYOUT

DRAWN: N.G.	DWG NO. 08-02664	REV B
SCALE NTS	DATE 04/01/15	SHEET 3 OF 11

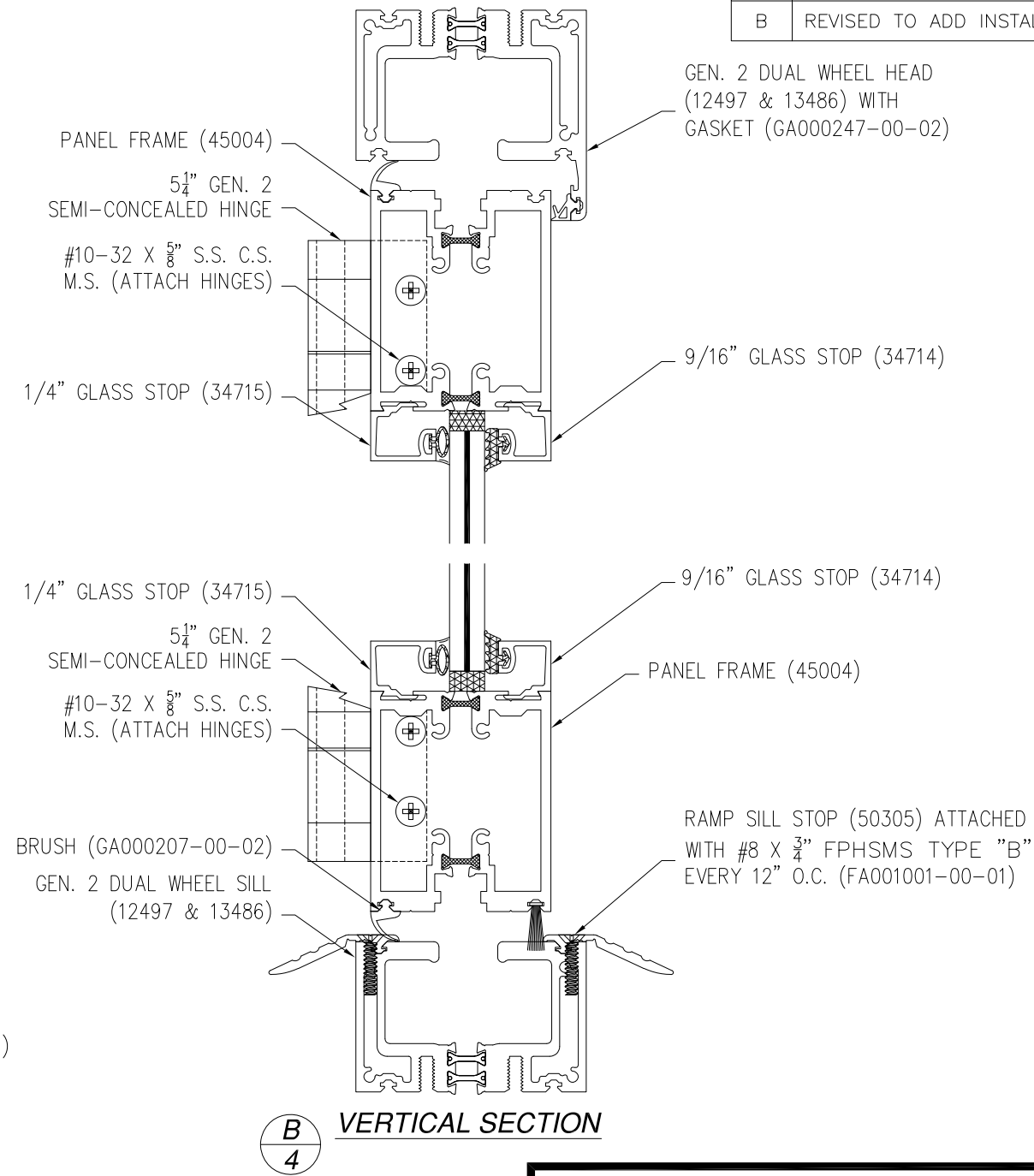
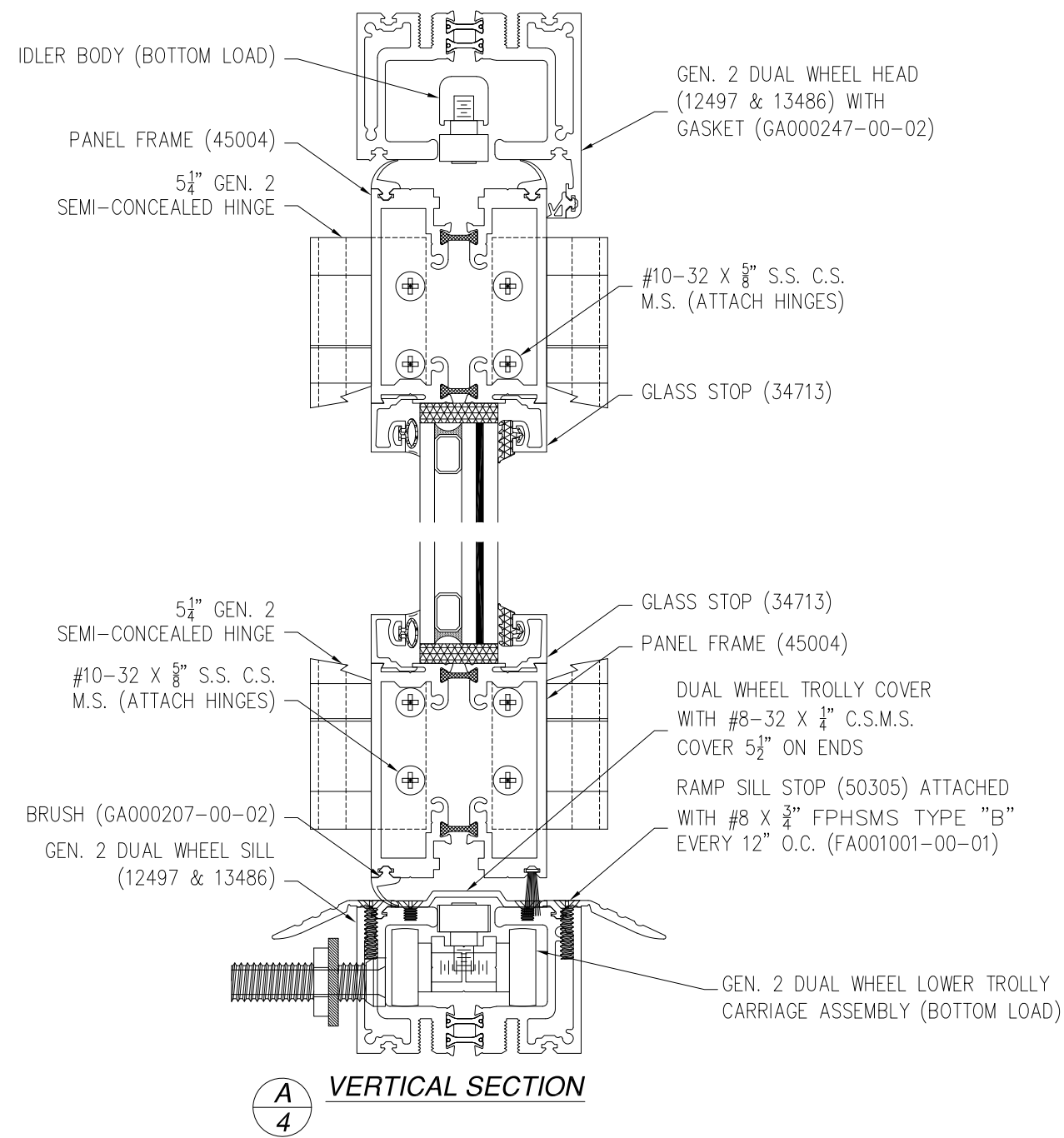
L. ROBERTO LOMAS P.E.  
400 S. PALM AVE, INDIALANTIC, FL 32903  
434-688-0609 rllomas@lrlomaspe.com



Luis R. Lomas P.E.  
TX No.: 101889  
Firm No: F-23130

**FOR ILLUSTRATION PURPOSES ONLY**  
**FOR INSTALLATION DETAILS REFER TO SHEETS 7 - 10**

REVISIONS			
REV	DESCRIPTION	DATE	APPROVED
A	REVISED PER NEW STANDARDS	08/05/2020	R.L.
B	REVISED TO ADD INSTALLATION DETAILS	06/22/2022	R.L.



**SOLAR INNOVATIONS, INC.**  
 31 ROBERTS RD.  
 PINE GROVE, PA 17963

---

SI 3350 IMPACT FGW 3' X 7.6' PANEL OUTFOLD  
 NON-REINFORCED  
 VERTICAL CROSS SECTIONS

DRAWN: N.G.	DWG NO. 08-02664	REV B
SCALE NTS	DATE 04/01/15	SHEET 4 OF 11

L. ROBERTO LOMAS P.E.  
 400 S. PALM AVE, INDIALANTIC, FL 32903  
 434-688-0609 rllomas@lrlomaspe.com

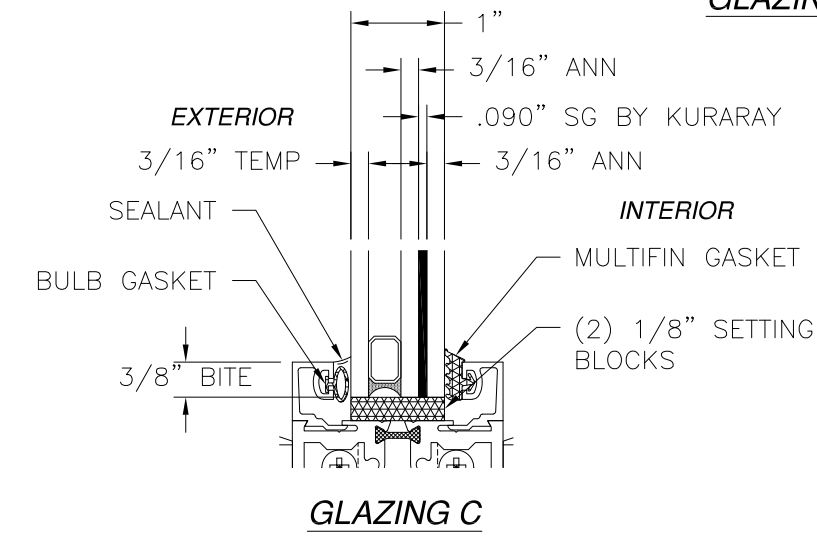
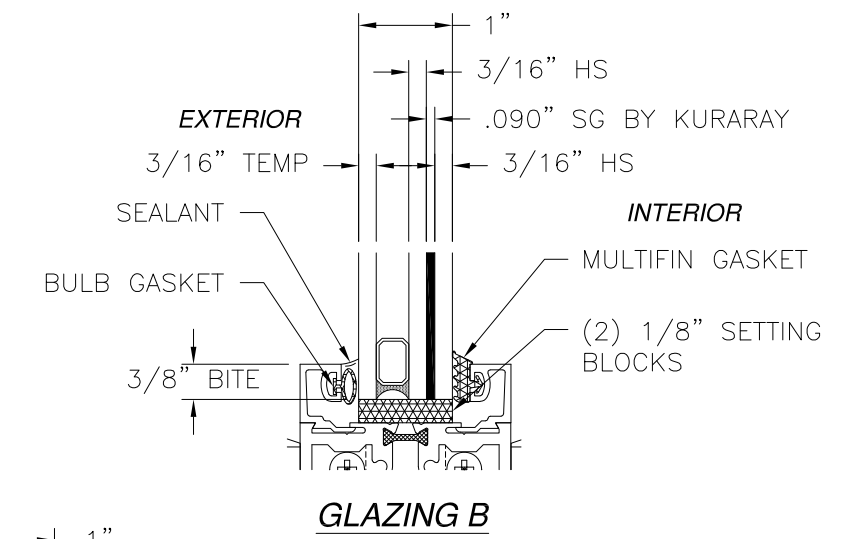
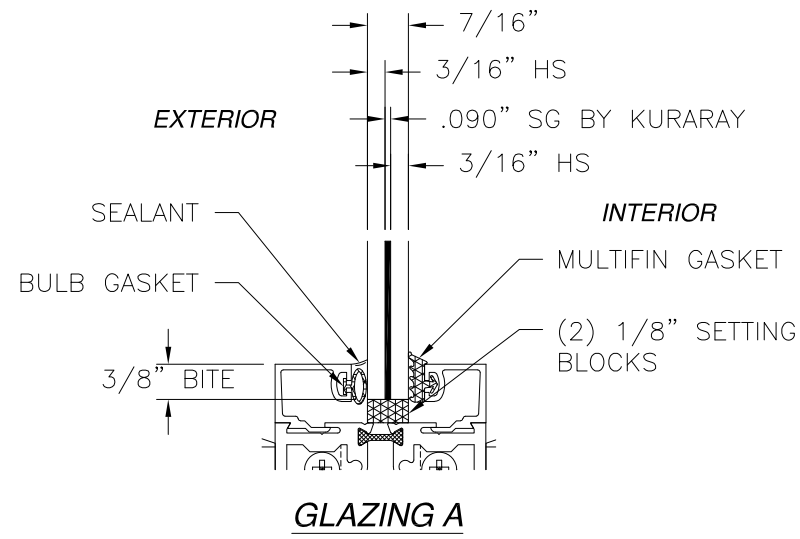
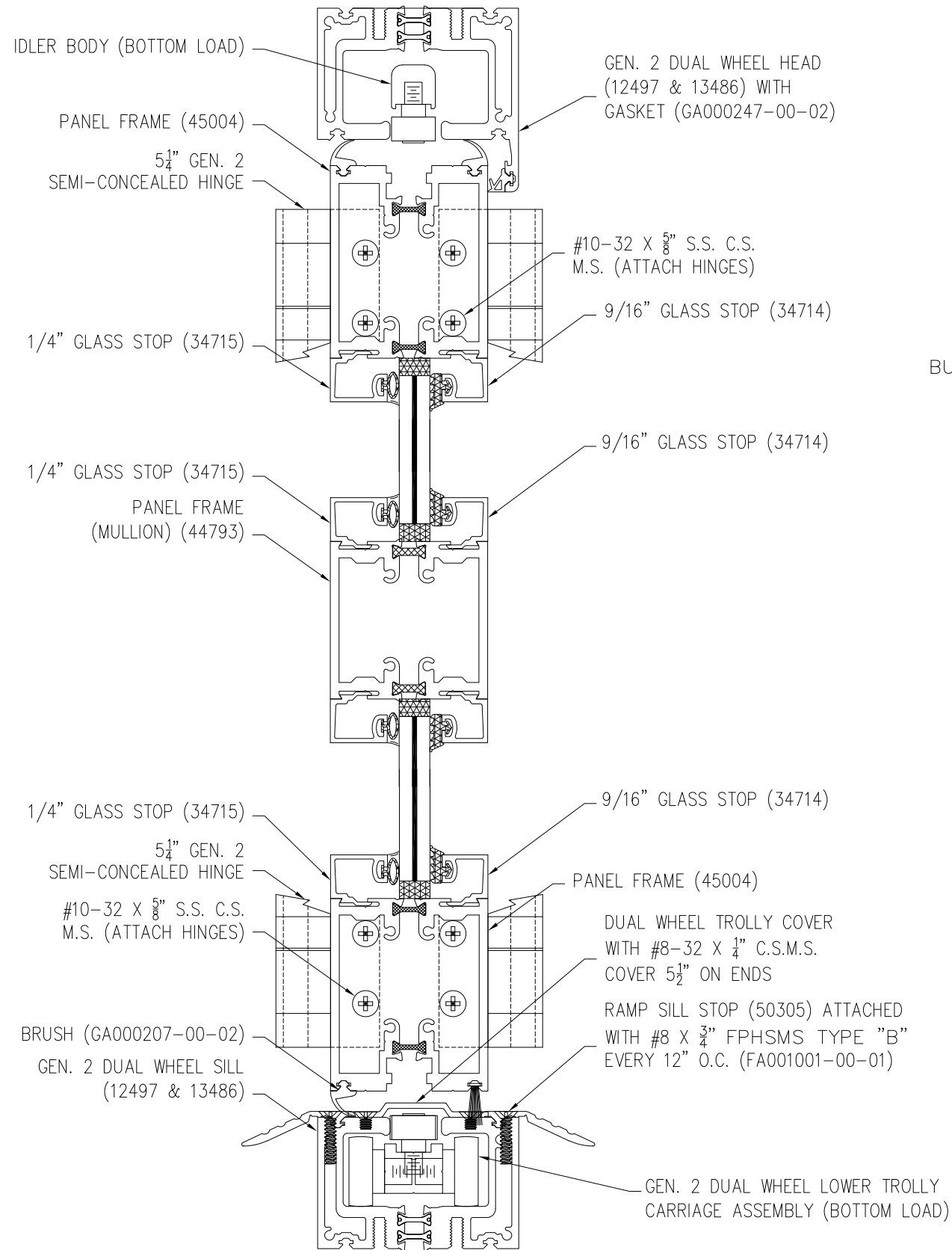
SIGNED: 06/22/2022



Luis R. Lomas P.E.  
 TX No.: 101889  
 Firm No: F-23130

**FOR ILLUSTRATION PURPOSES ONLY**  
**FOR INSTALLATION DETAILS REFER TO SHEETS 7 - 10**

REVISIONS			
REV	DESCRIPTION	DATE	APPROVED
A	REVISED PER NEW STANDARDS	08/05/2020	R.L.
B	REVISED TO ADD INSTALLATION DETAILS	06/22/2022	R.L.



**C**  
**5** VERTICAL SECTION

SIGNED: 06/22/2022

**SOLAR INNOVATIONS, INC.**  
 31 ROBERTS RD.  
 PINE GROVE, PA 17963

SI 3350 IMPACT FGW 3' X 7.6' PANEL OUTFOLD  
 NON-REINFORCED  
 VERTICAL CROSS SECTIONS & GLAZING DETAILS

DRAWN: N.G.	DWG NO. 08-02664	REV B
SCALE NTS	DATE 04/01/15	SHEET 5 OF 11

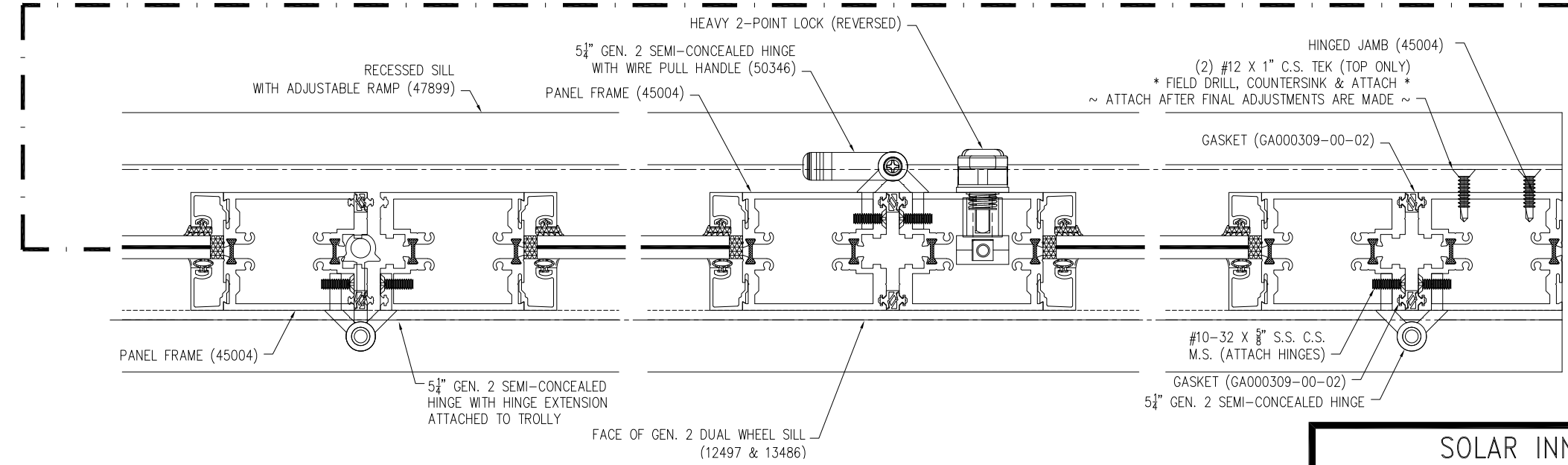
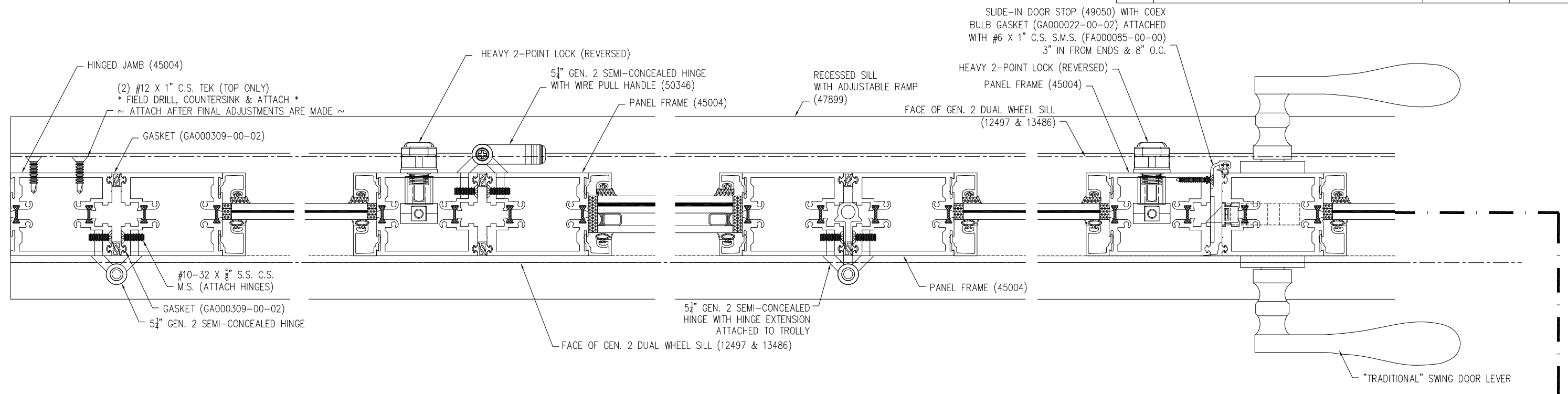
L. ROBERTO LOMAS P.E.  
 400 S. PALM AVE, INDIALANTIC, FL 32903  
 434-688-0609 rllomas@lrlomaspe.com



Luis R. Lomas P.E.  
 TX No.: 101889  
 Firm No: F-23130

**FOR ILLUSTRATION PURPOSES ONLY**  
**FOR INSTALLATION DETAILS REFER TO SHEETS 7 - 10**

REVISIONS			
REV	DESCRIPTION	DATE	APPROVED
A	REVISED PER NEW STANDARDS	08/05/2020	R.L.
B	REVISED TO ADD INSTALLATION DETAILS	06/22/2022	R.L.



**D**  
**6** HORIZONTAL SECTION

SIGNED: 06/22/2022

**SOLAR INNOVATIONS, INC.**  
 31 ROBERTS RD.  
 PINE GROVE, PA 17963

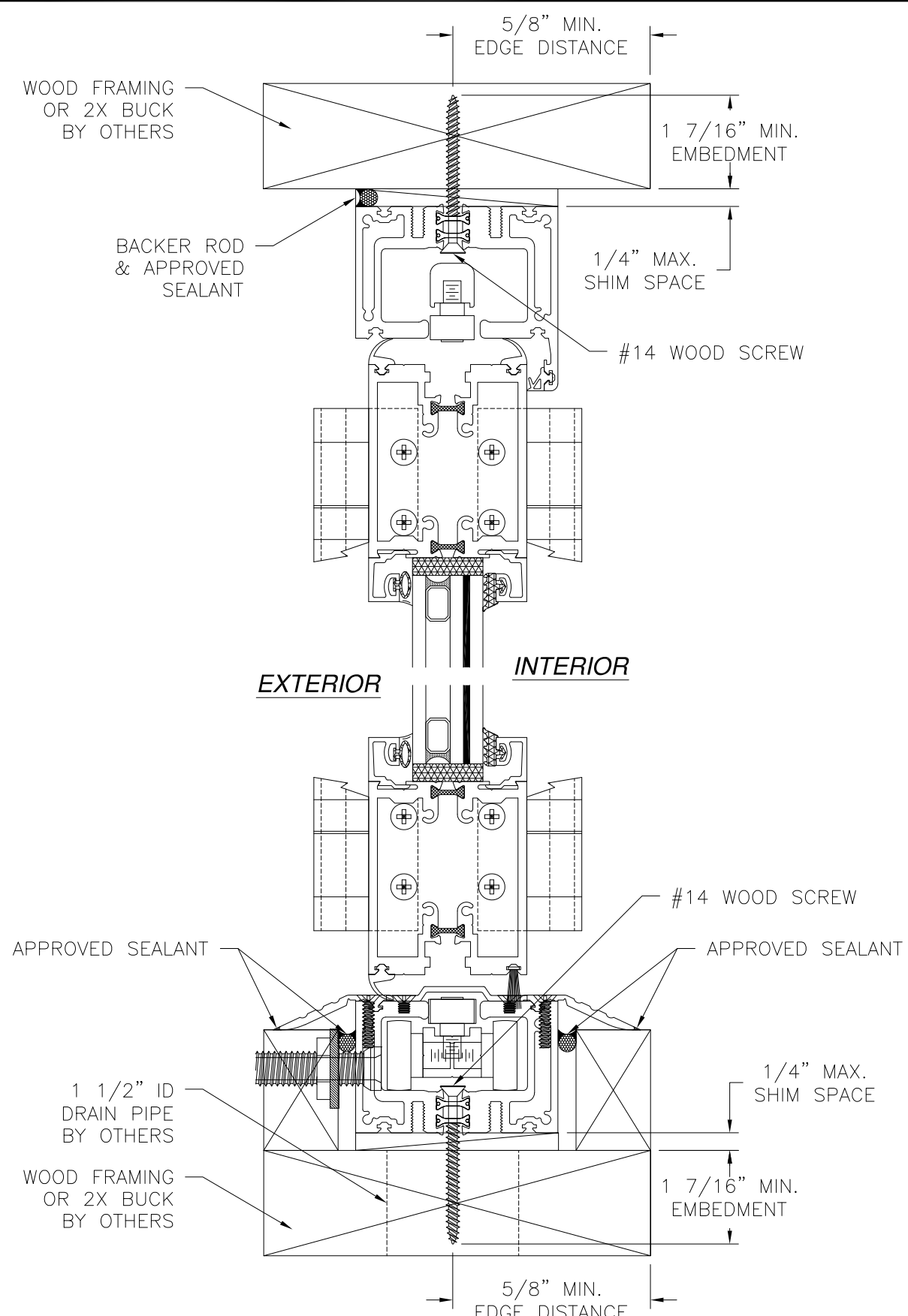
SI 3350 IMPACT FGW 3' X 7.6' PANEL OUTFOLD  
 NON-REINFORCED  
 HORIZONTAL CROSS SECTIONS

DRAWN: N.G.	DWG NO. 08-02664	REV B
SCALE NTS	DATE 04/01/15	SHEET 6 OF 11

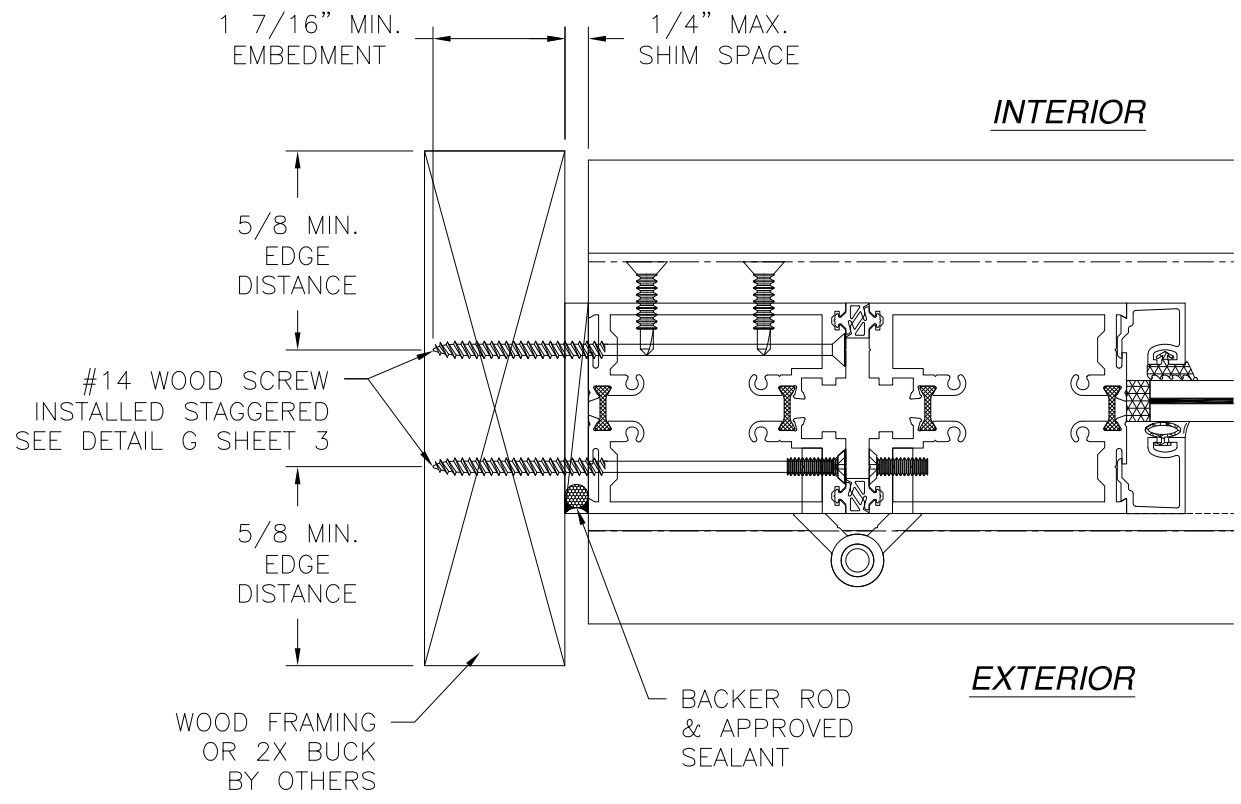
L. ROBERTO LOMAS P.E.  
 400 S. PALM AVE, INDIALANTIC, FL 32903  
 434-688-0609 rllomas@rlomaspe.com



Luis R. Lomas P.E.  
 TX No.: 101889  
 Firm No: F-23130



**VERTICAL CROSS SECTION**  
WOOD FRAMING OR 2X BUCK INSTALLATION



**JAMB INSTALLATION DETAIL**  
WOOD FRAMING OR 2X BUCK INSTALLATION

REVISIONS			
REV	DESCRIPTION	DATE	APPROVED
A	REVISED PER NEW STANDARDS	08/05/2020	R.L.
B	REVISED TO ADD INSTALLATION DETAILS	06/22/2022	R.L.

**NOTES:**  
 1. INTERIOR AND EXTERIOR FINISHES, BY OTHERS, NOT SHOWN FOR CLARITY.  
 2. PERIMETER AND JOINT SEALANT BY OTHERS TO BE DESIGNED IN ACCORDANCE WITH ASTM E2112

**SOLAR INNOVATIONS, INC.**  
 31 ROBERTS RD.  
 PINE GROVE, PA 17963

SI 3350 IMPACT FGW 3' X 7.6' PANEL OUTFOLD  
 NON-REINFORCED  
 INSTALLATION DETAILS

DRAWN: N.G.	DWG NO. 08-02664	REV B
SCALE NTS	DATE 04/01/15	SHEET 7 OF 11

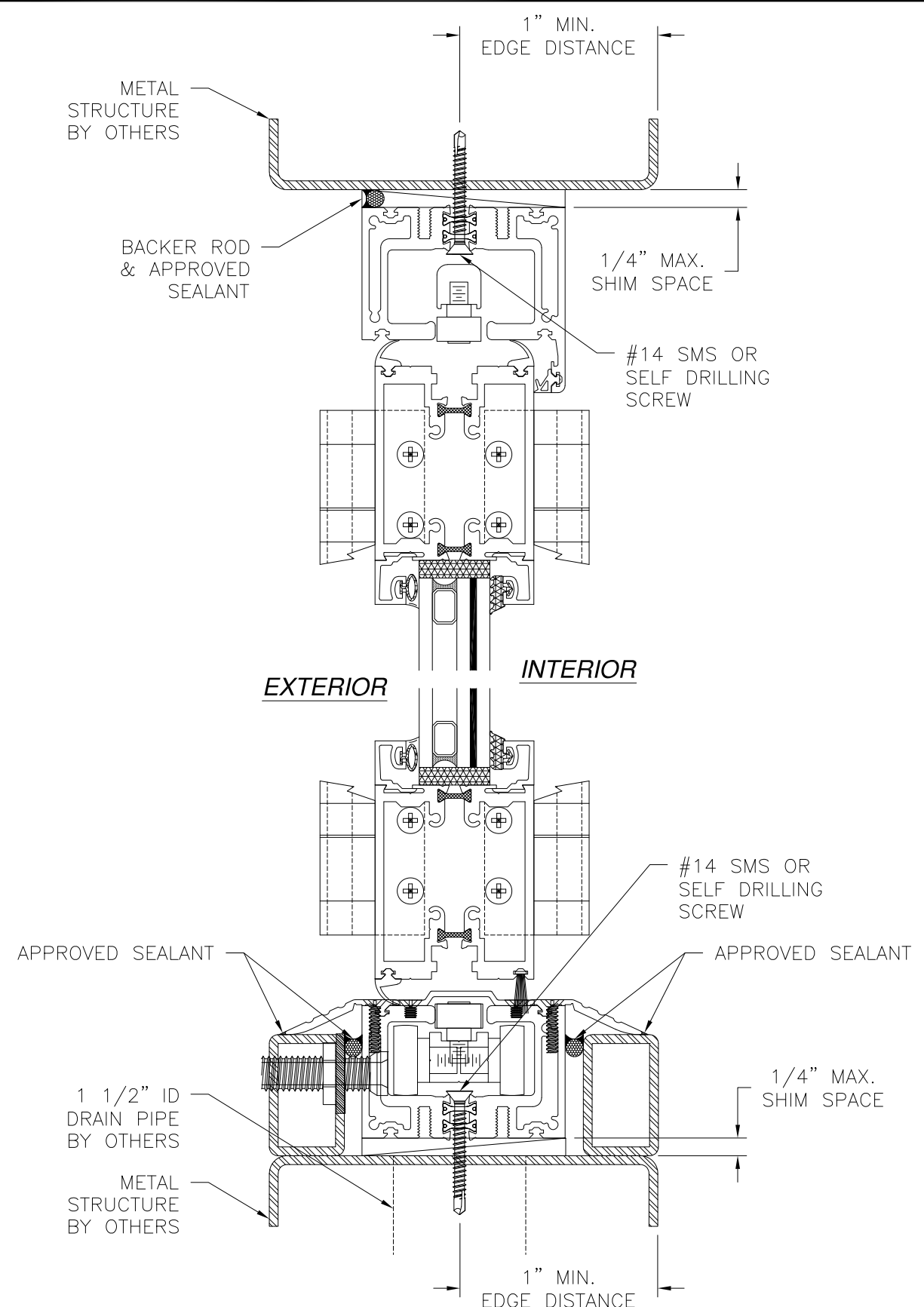
L. ROBERTO LOMAS P.E.  
 400 S. PALM AVE, INDIALANTIC, FL 32903  
 434-688-0609 rllomas@rlomaspe.com

SIGNED: 06/22/2022

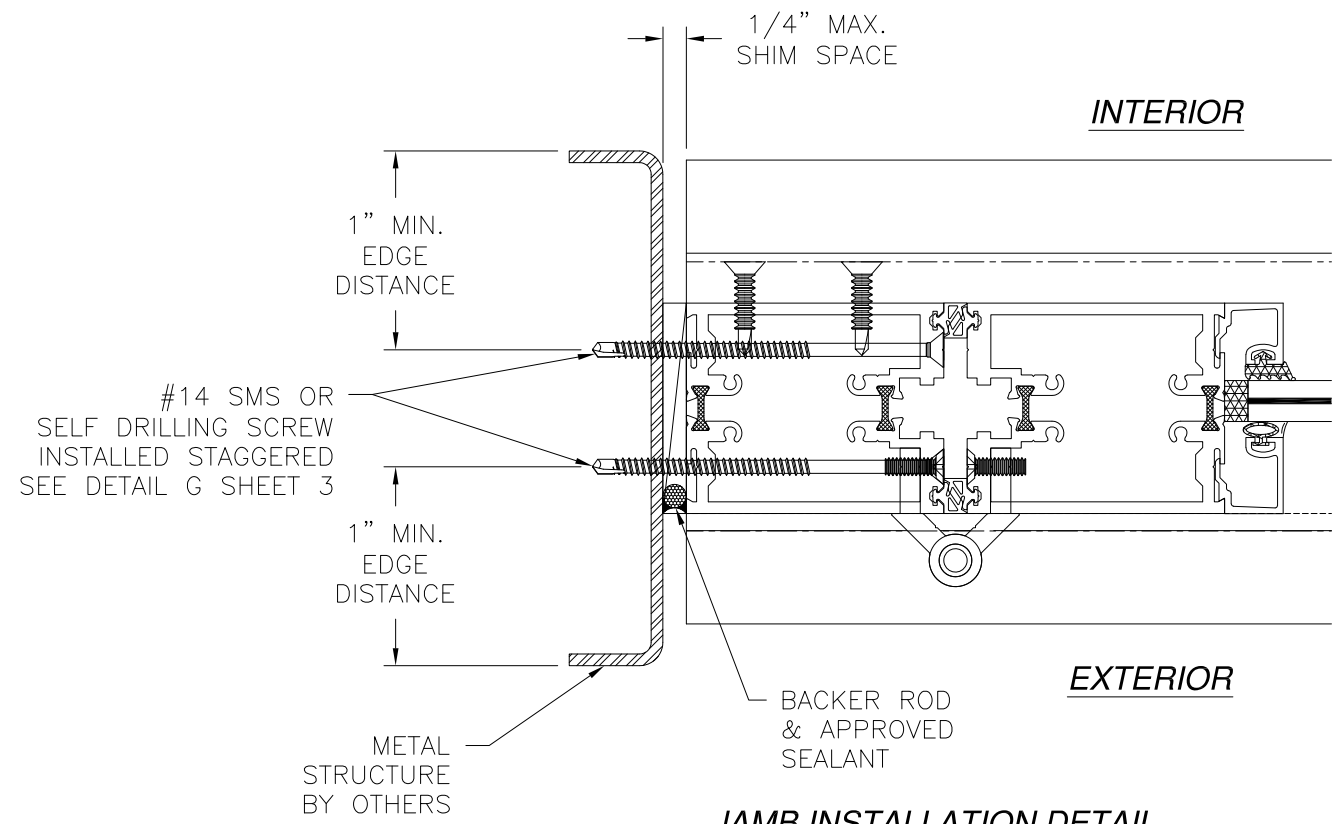


Luis R. Lomas P.E.  
 TX No.: 101889  
 Firm No: F-23130

REVISIONS			
REV	DESCRIPTION	DATE	APPROVED
A	REVISED PER NEW STANDARDS	08/05/2020	R.L.
B	REVISED TO ADD INSTALLATION DETAILS	06/22/2022	R.L.



**VERTICAL CROSS SECTION**  
METAL STRUCTURE INSTALLATION



**JAMB INSTALLATION DETAIL**  
METAL STRUCTURE INSTALLATION

- NOTES:**
1. INTERIOR AND EXTERIOR FINISHES, BY OTHERS, NOT SHOWN FOR CLARITY.
  2. PERIMETER AND JOINT SEALANT BY OTHERS TO BE DESIGNED IN ACCORDANCE WITH ASTM E2112

**SOLAR INNOVATIONS, INC.**  
31 ROBERTS RD.  
PINE GROVE, PA 17963

SI 3350 IMPACT FGW 3' X 7.6' PANEL OUTFOLD  
NON-REINFORCED  
INSTALLATION DETAILS

DRAWN: N.G.	DWG NO. 08-02664	REV B
SCALE NTS	DATE 04/01/15	SHEET 8 OF 11

L. ROBERTO LOMAS P.E.  
400 S. PALM AVE, INDIALANTIC, FL 32903  
434-688-0609 rllomas@rlomaspe.com

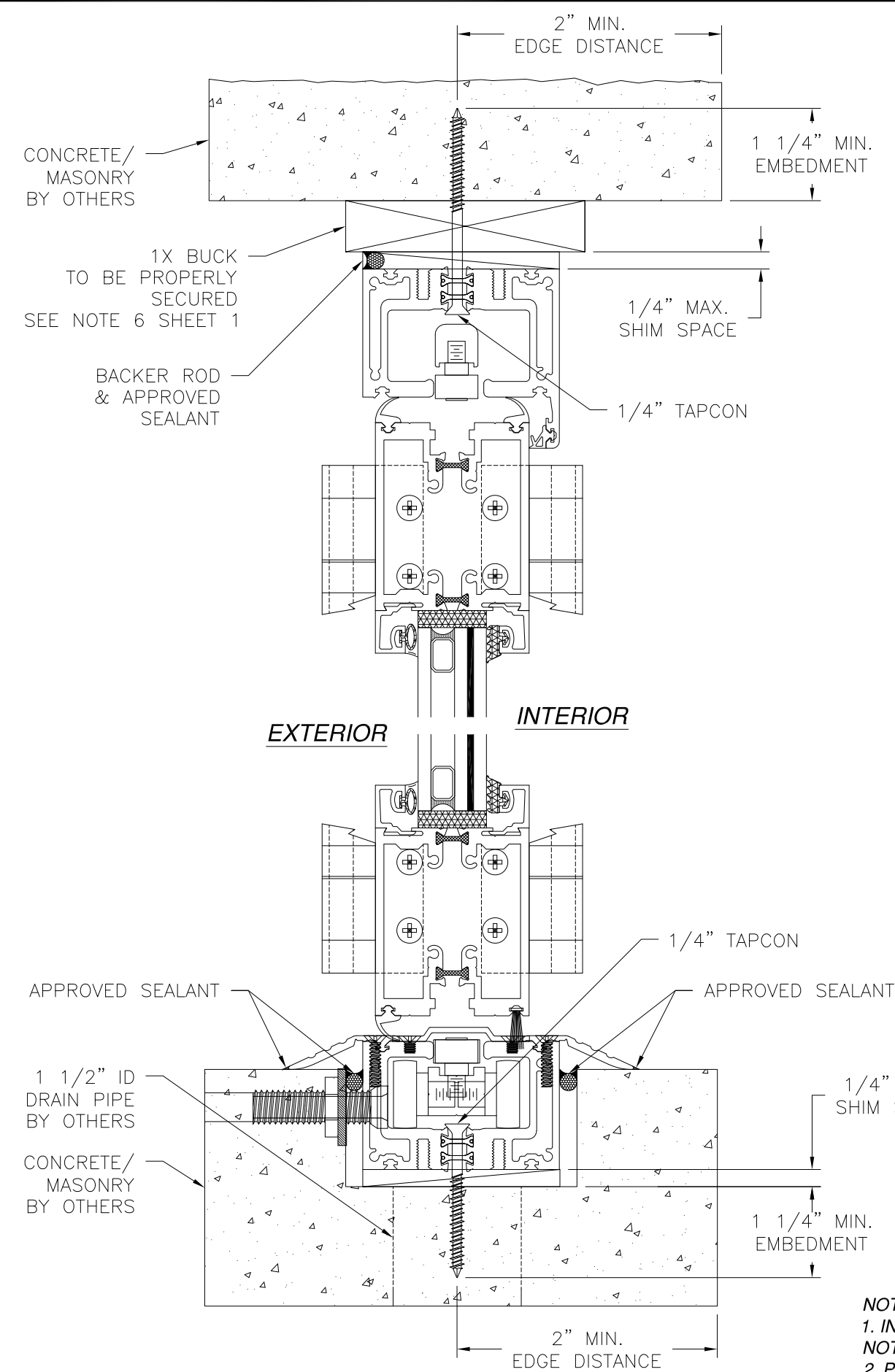
SIGNED: 06/22/2022



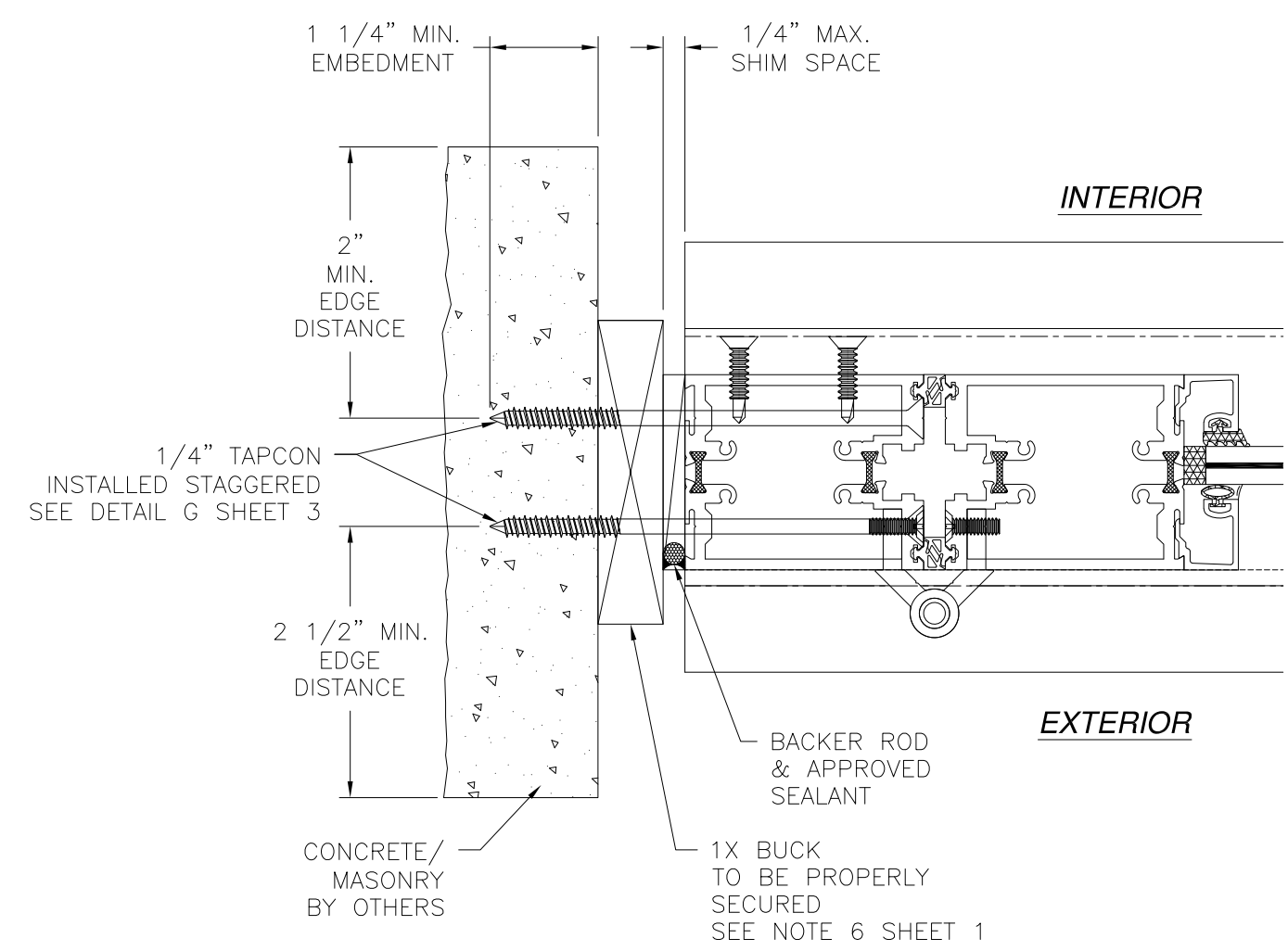
Luis R. Lomas P.E.  
TX No.: 101889  
Firm No: F-23130



REVISIONS			
REV	DESCRIPTION	DATE	APPROVED
A	REVISED PER NEW STANDARDS	08/05/2020	R.L.
B	REVISED TO ADD INSTALLATION DETAILS	06/22/2022	R.L.



**VERTICAL CROSS SECTION**  
CONCRETE/MASONRY W/1X BUCK INSTALLATION



**JAMB INSTALLATION DETAIL**  
CONCRETE/MASONRY W/1X BUCK INSTALLATION

- NOTES:**
1. INTERIOR AND EXTERIOR FINISHES, BY OTHERS, NOT SHOWN FOR CLARITY.
  2. PERIMETER AND JOINT SEALANT BY OTHERS TO BE DESIGNED IN ACCORDANCE WITH ASTM E2112

**SOLAR INNOVATIONS, INC.**  
31 ROBERTS RD.  
PINE GROVE, PA 17963

SI 3350 IMPACT FGW 3' X 7.6' PANEL OUTFOLD  
NON-REINFORCED  
INSTALLATION DETAILS

DRAWN: N.G.	DWG NO. 08-02664	REV B
SCALE NTS	DATE 04/01/15	SHEET 9 OF 11

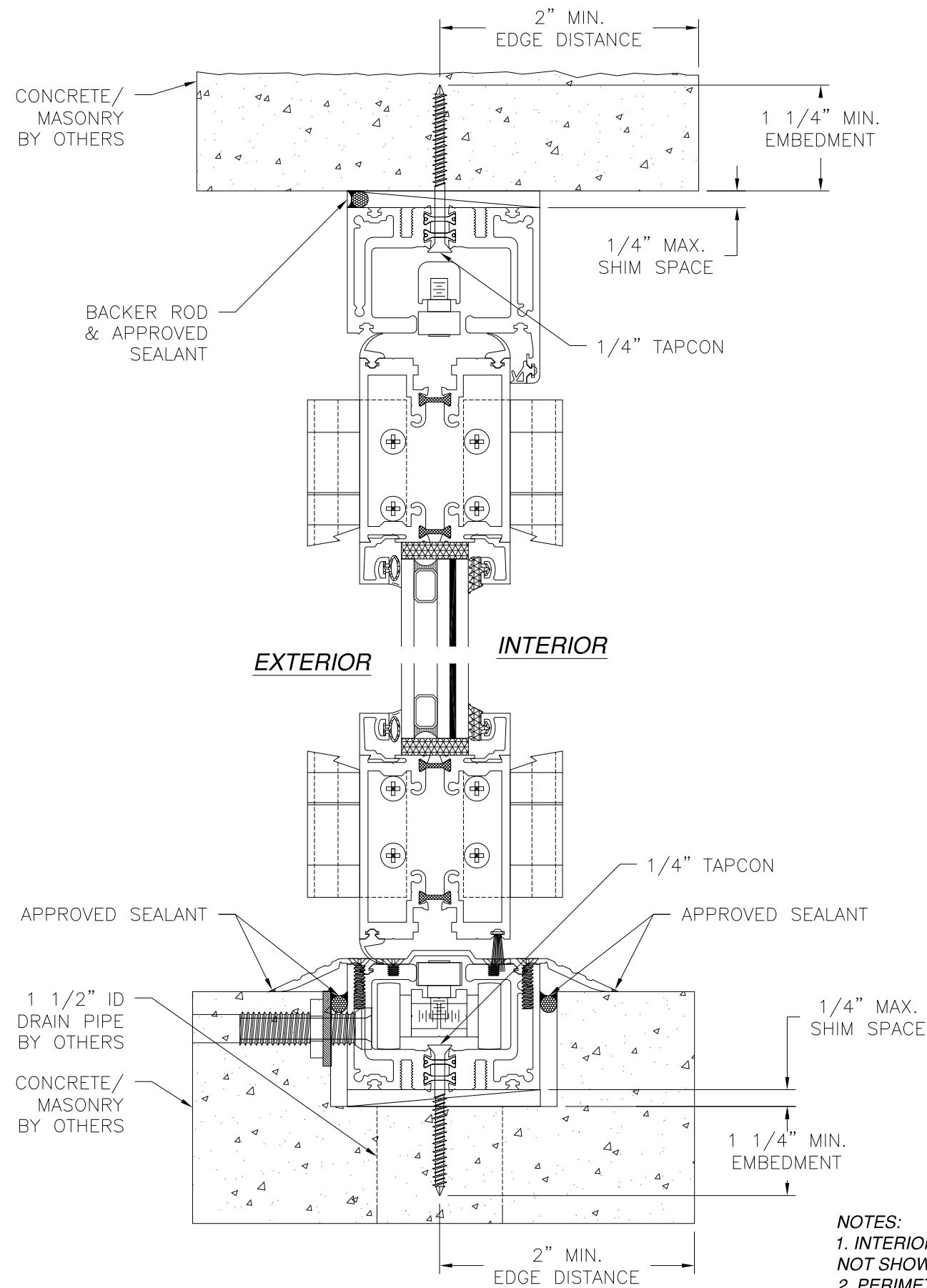
L. ROBERTO LOMAS P.E.  
400 S. PALM AVE, INDIALANTIC, FL 32903  
434-688-0609 rllomas@lrlomaspe.com

SIGNED: 06/22/2022

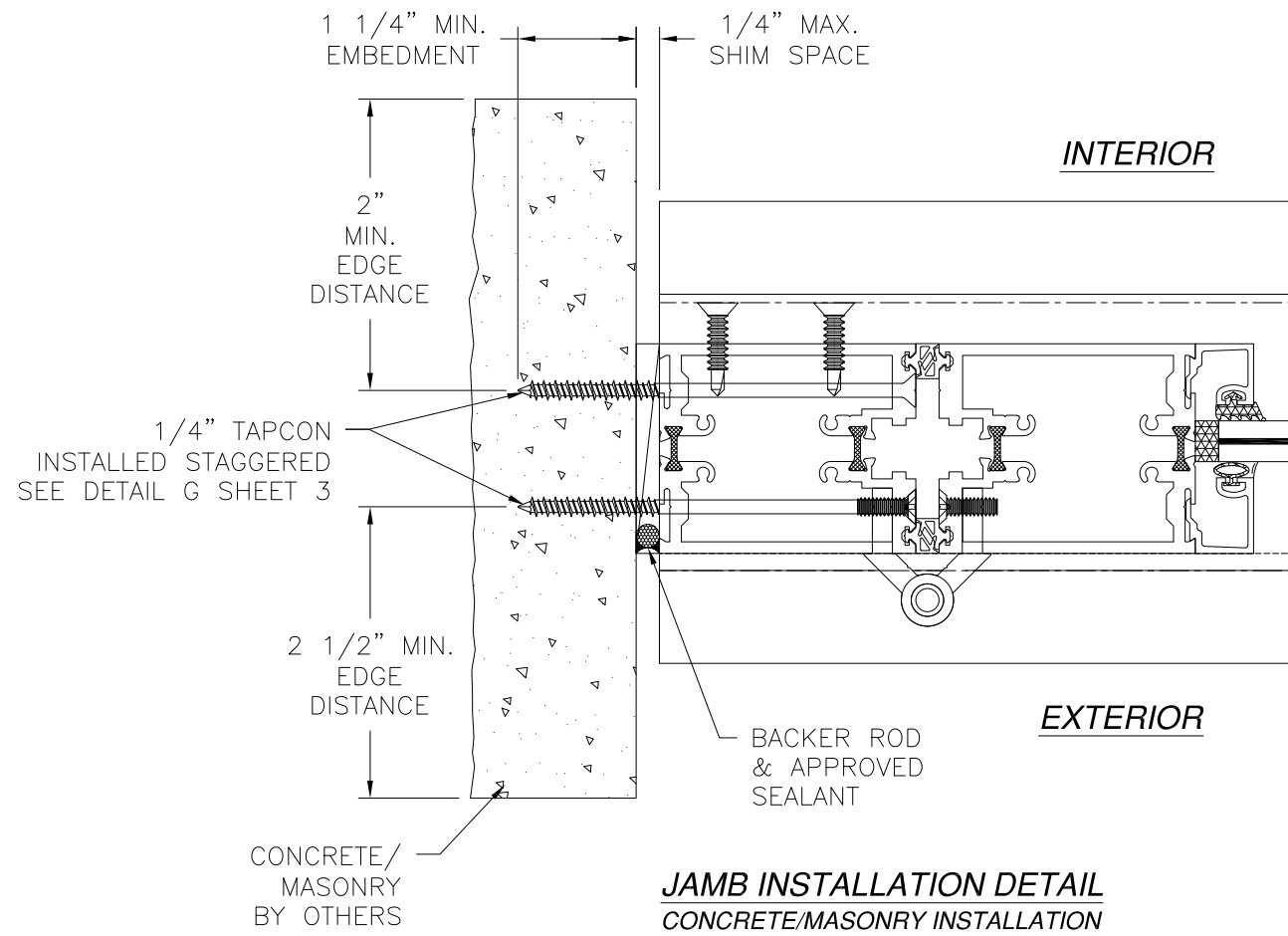


Luis R. Lomas P.E.  
TX No.: 101889  
Firm No: F-23130

REVISIONS			
REV	DESCRIPTION	DATE	APPROVED
A	REVISED PER NEW STANDARDS	08/05/2020	R.L.
B	REVISED TO ADD INSTALLATION DETAILS	06/22/2022	R.L.



**VERTICAL CROSS SECTION**  
CONCRETE/MASONRY INSTALLATION



- NOTES:**
1. INTERIOR AND EXTERIOR FINISHES, BY OTHERS, NOT SHOWN FOR CLARITY.
  2. PERIMETER AND JOINT SEALANT BY OTHERS TO BE DESIGNED IN ACCORDANCE WITH ASTM E2112

SIGNED: 06/22/2022

**SOLAR INNOVATIONS, INC.**  
31 ROBERTS RD.  
PINE GROVE, PA 17963

SI 3350 IMPACT FGW 3' X 7.6' PANEL OUTFOLD  
NON-REINFORCED  
INSTALLATION DETAILS

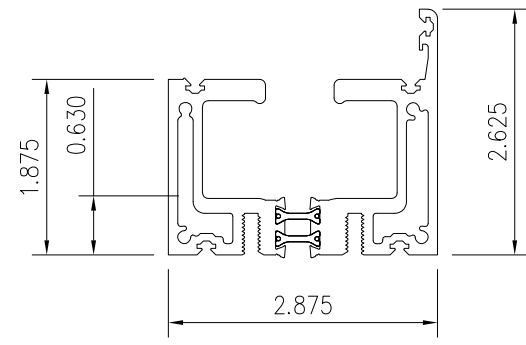
DRAWN: N.G.	DWG NO. 08-02664	REV B
SCALE NTS	DATE 04/01/15	SHEET 10 OF 11

L. ROBERTO LOMAS P.E.  
400 S. PALM AVE, INDIALANTIC, FL 32903  
434-688-0609 rllomas@lrlomaspe.com

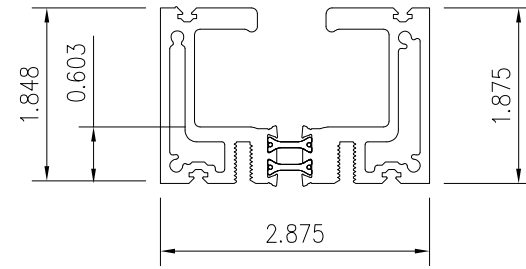


Luis R. Lomas P.E.  
TX No.: 101889  
Firm No: F-23130

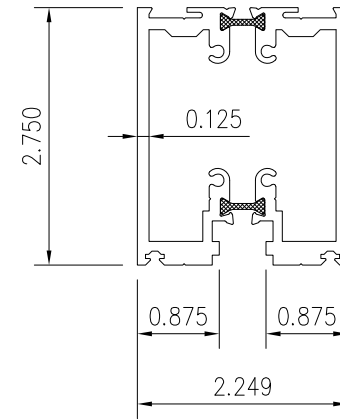
REVISIONS			
REV	DESCRIPTION	DATE	APPROVED
A	REVISED PER NEW STANDARDS	08/05/2020	R.L.
B	REVISED TO ADD INSTALLATION DETAILS	06/22/2022	R.L.



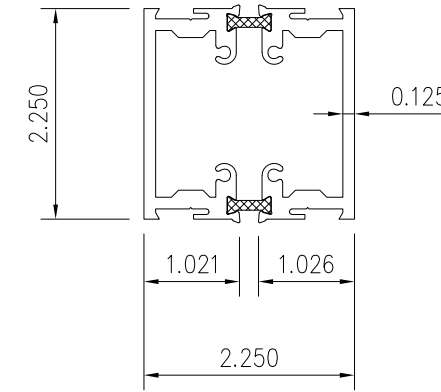
DUAL WHEEL  
HEAD / SILL



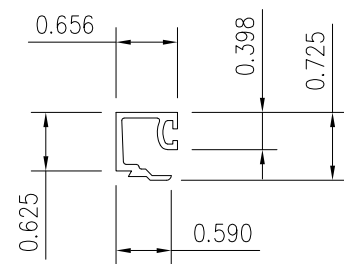
FLUSH  
SILL



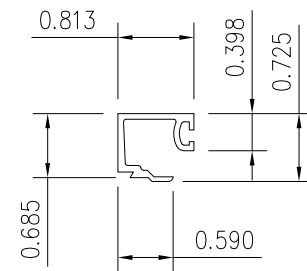
FRAME



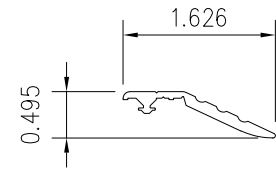
HORIZONTAL  
MULLION



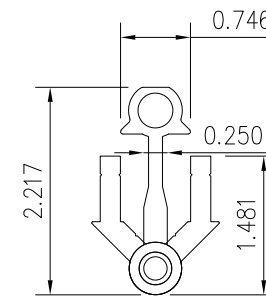
9/16" GLASS  
STOP



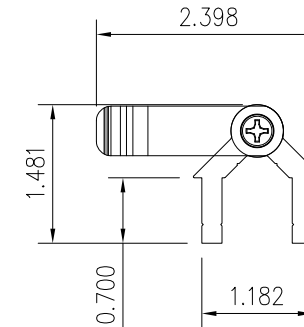
1/4" GLASS  
STOP



RAMP  
SILL



GEN. 2 SEMI-CONCEALED  
HINGE WITH EXTENSION



5 1/4" SEMI-CONCEALED  
HINGE W/WIRE PULL HANDLE

SIGNED: 06/22/2022

SOLAR INNOVATIONS, INC.

31 ROBERTS RD.  
PINE GROVE, PA 17963

SI 3350 IMPACT FGW 3' X 7.6' PANEL OUTFOLD  
NON-REINFORCED  
COMPONENTS

DRAWN: N.G. DWG NO. 08-02664 REV B

SCALE NTS DATE 04/01/15 SHEET 11 OF 11

L. ROBERTO LOMAS P.E.  
400 S. PALM AVE, INDIALANTIC, FL 32903  
434-688-0609 rllomas@rlomaspe.com



Luis R. Lomas P.E.  
TX No.: 101889  
Firm No: F-23130