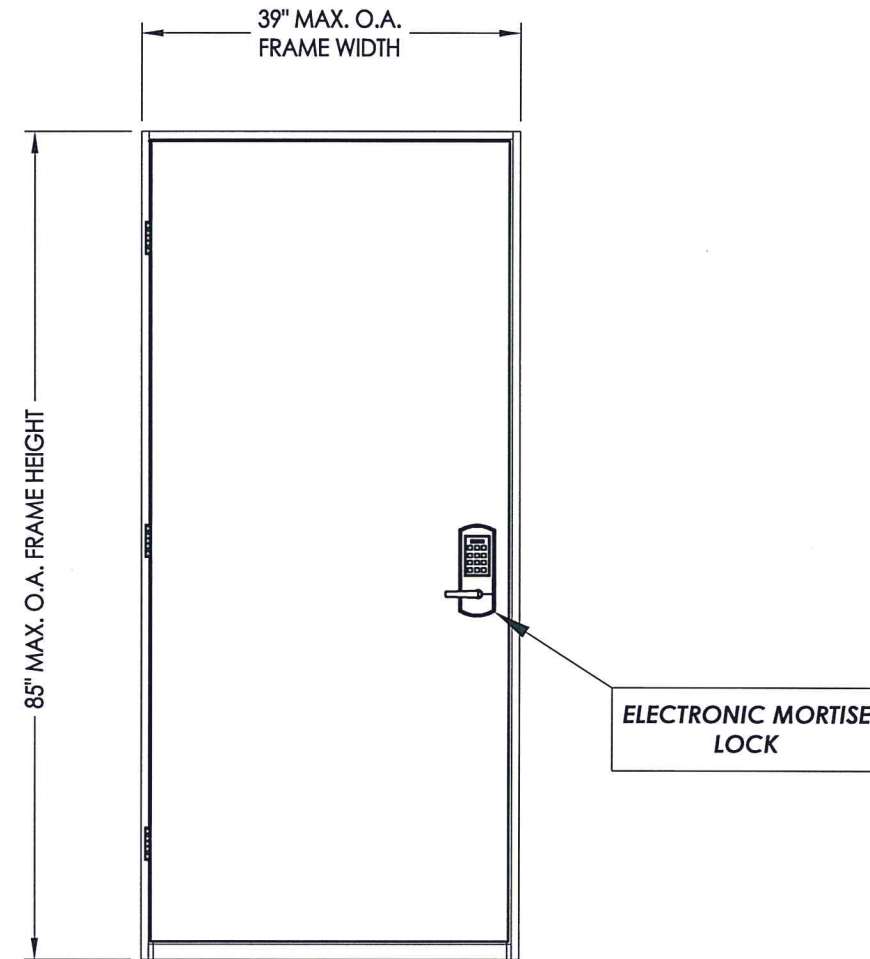




**SERIES "660" "760" "770" "79X"
 "RT" "RT PLUS" "NOVA RT" "NOVA RT PLUS"
 "E-PLEX 79XX" "E-PLEX 2000"
 "POWER-PLEX 2000"**

**ELECTRONIC MORTISE LOCKS
 in a
 STEEL DOOR
 INSWING / OUTSWING
 "IMPACT"**



Documents Prepared By: Lyndon F. Schmidt, P.E.
 TEXAS P.E. #104123
 RW BUILDING CONSULTANTS, INC.
 P.O. Box 230 Vairico FL 33595
 Phone No.: 813.659.9197
 TEXAS BOARD OF PROFESSIONAL ENGINEERS
 CERTIFICATE OF REGISTRATION # F-11852

EVALUATED FOR USE IN THE STATE OF TEXAS

DR-1228

The Steel Door system described herein complies with the 2018 International Residential Code (IRC), Sections R301 & R609 and the 2018 International Building Code (IBC), Sections 1404.13, 1609, 1709.5, 2403 and 2404 subject to the following conditions:

1. Anchors shall be as listed and spaced as shown in the details. Anchor embedment to base material shall be beyond wall dressing or stucco.
2. This system has been tested and evaluated as a large missile impact protective system for installation in areas that require wind borne debris protection. This product meets missile level "D" as defined in ASTM E 1996.
3. Allowable design pressure requirements must be equal to or less than the design pressure rating shown in the design pressure chart, sheet 1 of this drawing.
4. Conditions not covered by this drawing are subject to further engineering analysis.

TABLE OF CONTENTS	
SHEET#	DESCRIPTION
1	Typical elevations, design pressures & general notes
2	Door panel details
3	Horizontal & Vertical cross sections
4	Frame anchoring details (steel frame)
5	Bill of materials & components

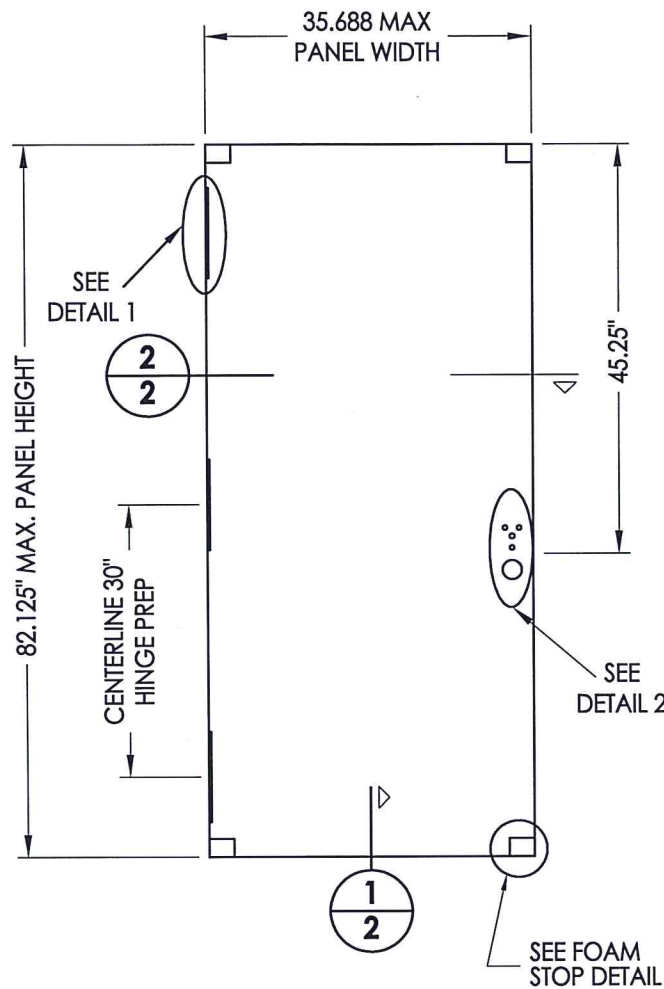
MAX FRAME DIMENSION	ELECTRONIC MORTISE LOCK MODEL	DOOR PANEL	DESIGN PRESSURE (PSF)			
			INSWING		OUTSWING	
			POSITIVE	NEGATIVE	POSITIVE	NEGATIVE
39" x 85"	"660" "760" "770" "79X" "E-PLEX 79XX" "E-PLEX 2000" "POWER-PLEX 2000"	TRU-TECH STEEL DOOR	+60.0	-65.0	+65.0	-65.0

Note: The outswing unit requires the use of the automatic deadbolt option.

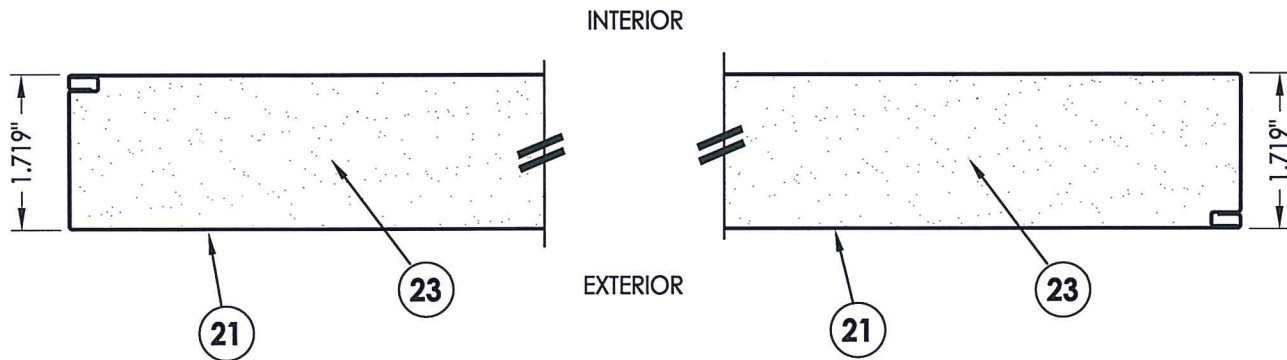
PRODUCT: dormakaba ELECT. MORTISE LOCK STEEL DOOR
 PART OR ASSEMBLY: TYPICAL ELEVATIONS, DESIGN PRESSURES & GENERAL NOTES

NO.	DATE	ADD NEW MODEL NUMBERS	LFS	BY	REVISIONS
1	9/21/22				

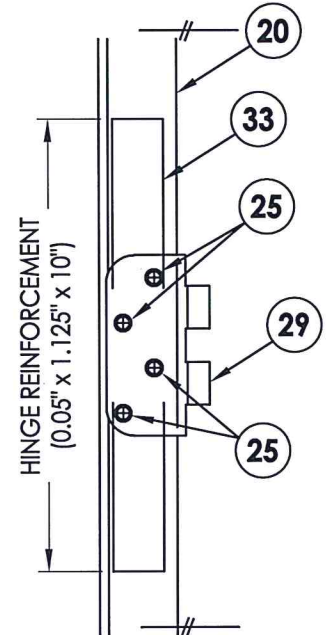
DATE: 1/13/22
 SCALE: N.T.S.
 DWG. BY: LFS
 CHK. BY: RW
 DRAWING NO.: TX-5258
 SHEET 1 OF 5



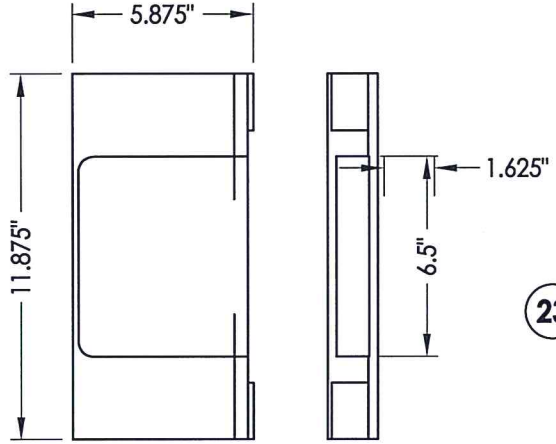
20 TRU-TECH STEEL DOOR PANEL
 (24 GA. - 0.021" THICK GALV. STEEL)
 Lock prep holes shown for illustrative purposes only. Prep varies per lock function.



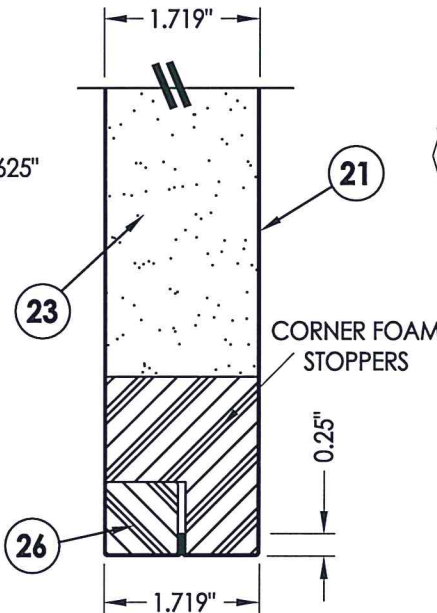
2 HORIZONTAL CROSS SECTION



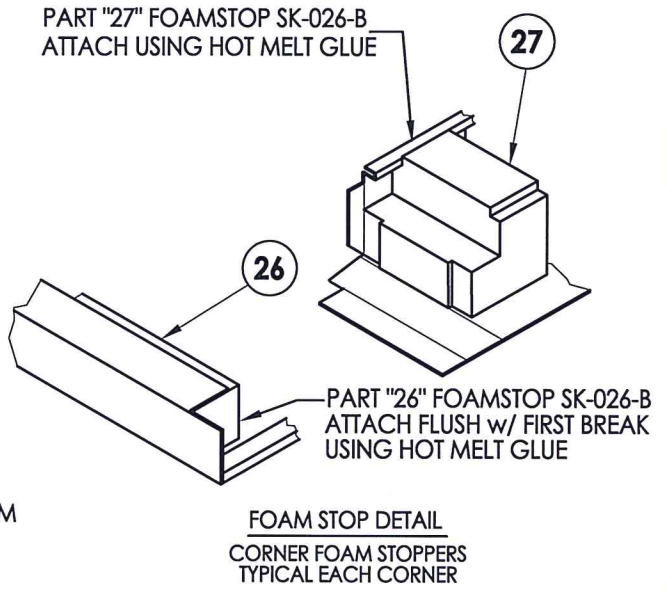
1 HINGE STILE EDGE DETAIL
 Reinforcement



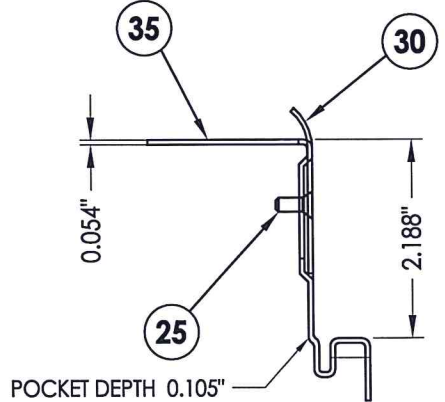
2 WOOD LOCK BLOCK
 Morrise Lock Pocket Reinforcement



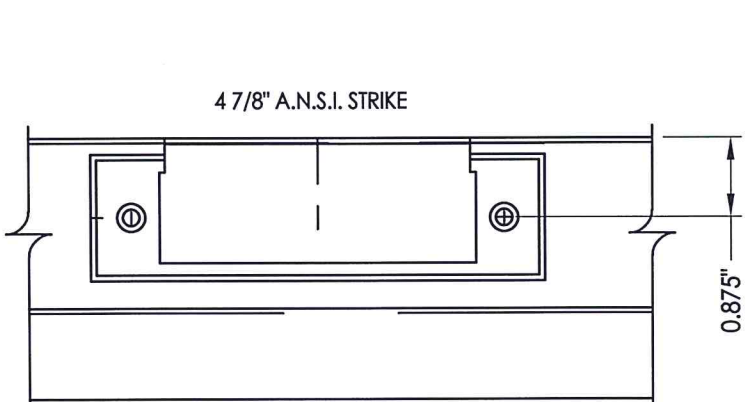
1 VERTICAL CROSS SECTION
2 TOP & BOTTOM (TYP.)



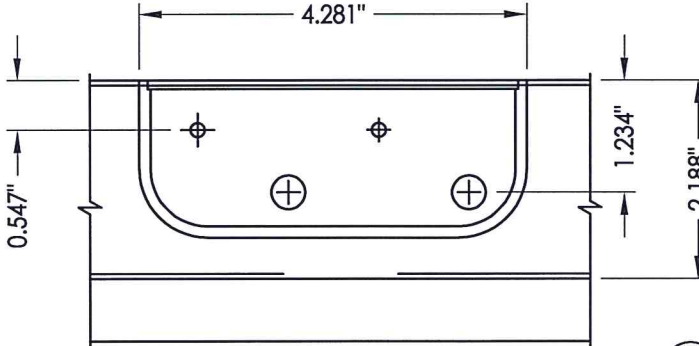
FOAM STOP DETAIL
 CORNER FOAM STOPPERS
 TYPICAL EACH CORNER



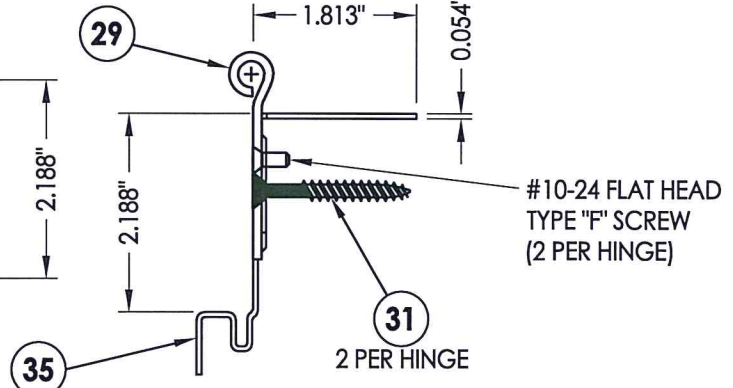
HORIZONTAL CROSS SECTION
 STRIKE TO BASE JAMB OF
 SPLIT FRAME



BASE FRAME DETAIL
 @ ANSI STRIKE PREP



BASE FRAME DETAIL
 @ HINGE PREP



HORIZONTAL CROSS SECTION
 HINGE TO BASE JAMB OF
 SPLIT FRAME



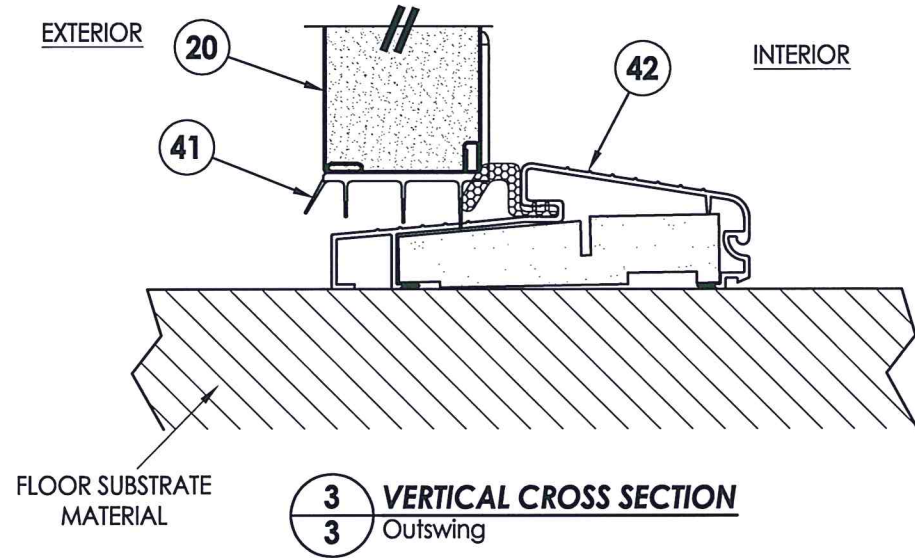
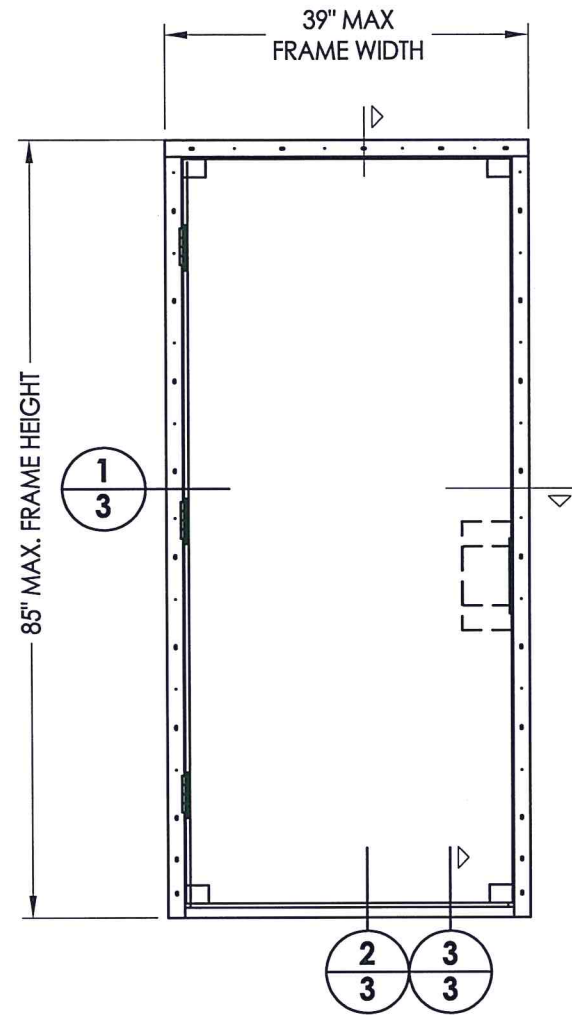
Documents Prepared By: Lyndon F. Schmidt, P.E.
 TEXAS P.E. #104123
 R.W. BUILDING CONSULTANTS, INC.
 P.O. Box 230 Valrico FL 33595
 Phone No.: 813.659.9197
 TEXAS BOARD OF PROFESSIONAL ENGINEERS
 CERTIFICATE OF REGISTRATION # F-11852

PRODUCT: dormakaba ELECT. MORRISE LOCK STEEL DOOR
 PART OR ASSEMBLY: DOOR PANEL DETAILS

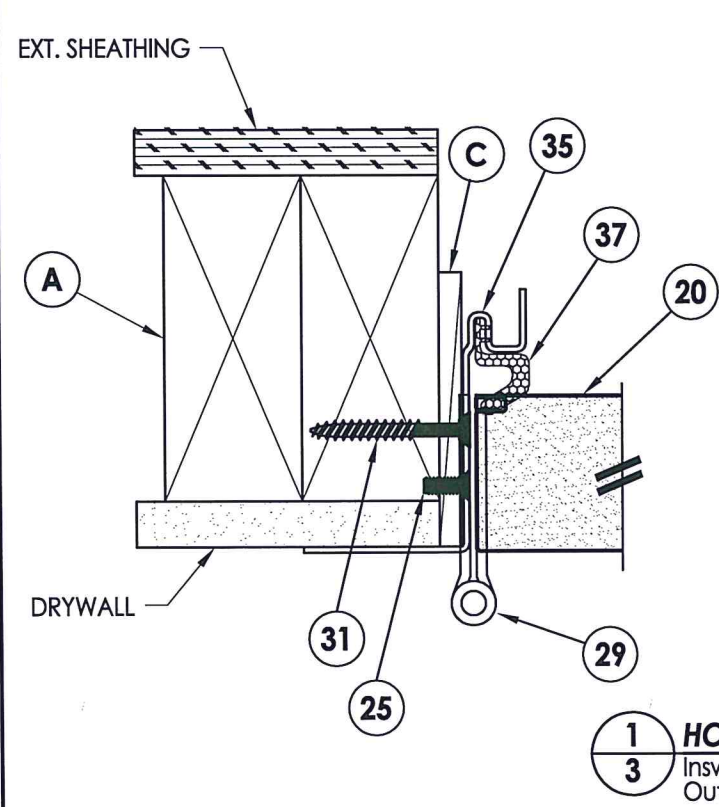
NO.	DATE	ADD NEW MODEL NUMBERS	LFS	BY
1	9/21/22			

DATE: 1/13/22
 SCALE: N.T.S.
 DWG. BY: LFS
 CHK. BY: RW
 DRAWING NO.: TX-5258
 SHEET 2 OF 5

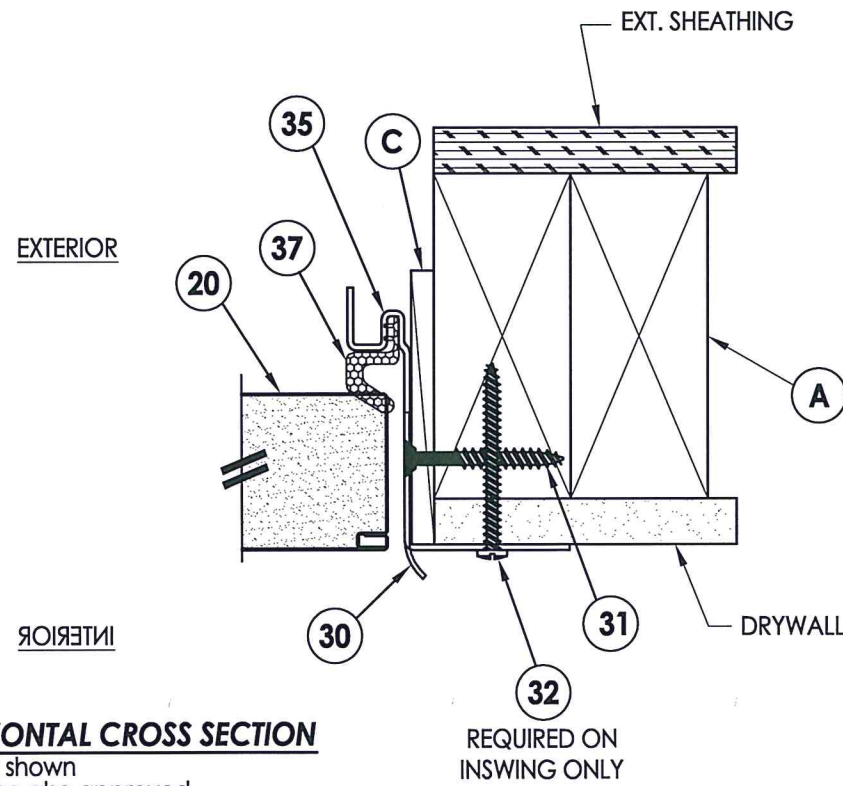
Z:\Clients\dormakaba Canada PERMANENT\B - Texas Dept of Ins\DR-1228 Electronic Mortise Locks\Drawings\TX-5258.dwg



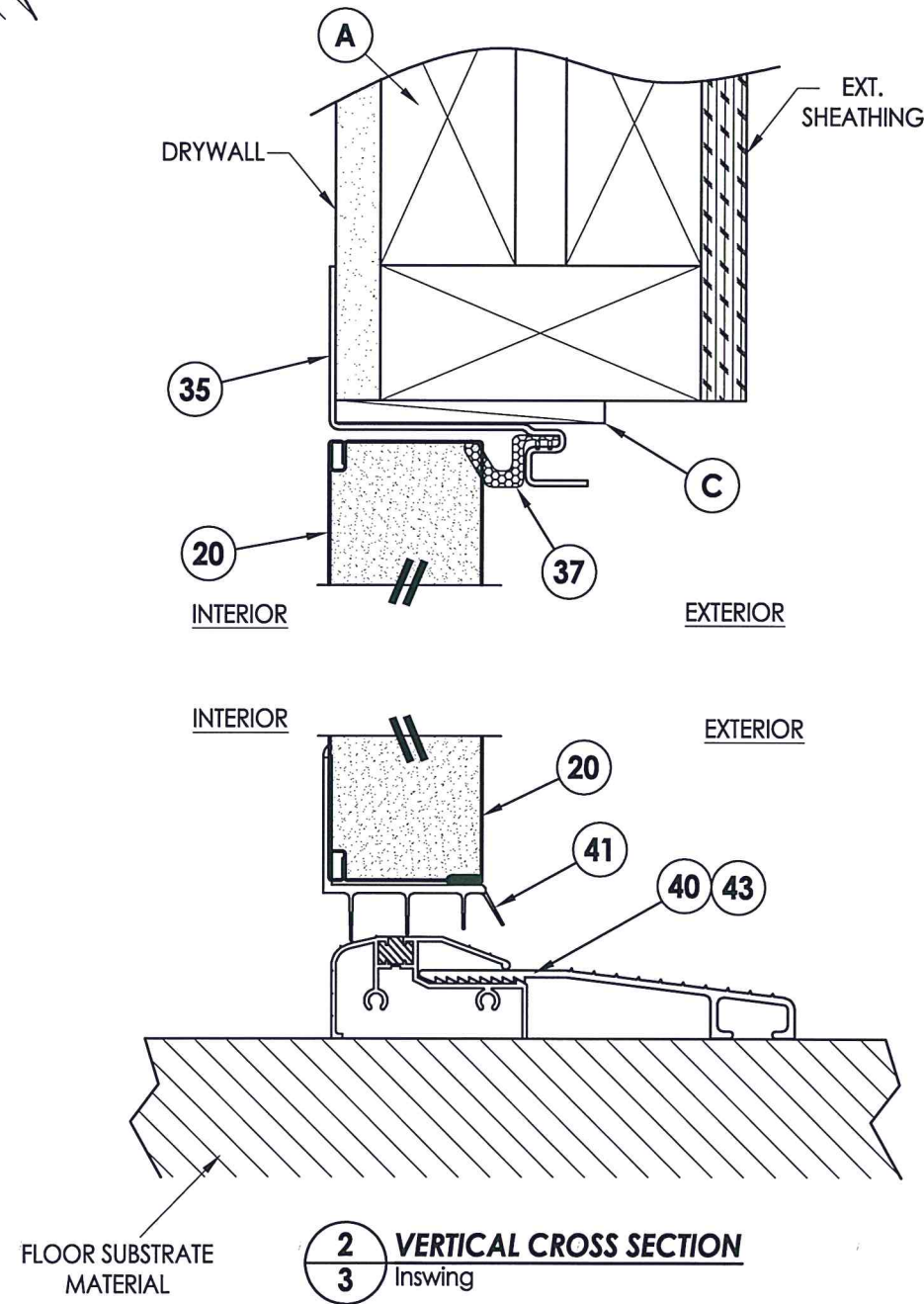
3 VERTICAL CROSS SECTION
3 Outswing



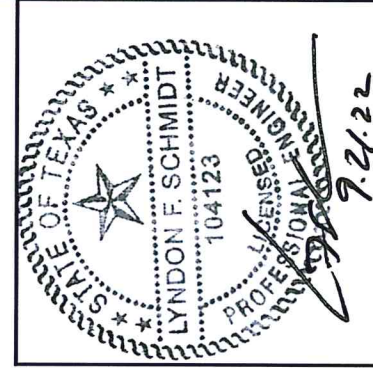
1 HORIZONTAL CROSS SECTION
3 Inswing shown
Outswing also approved



3 HORIZONTAL CROSS SECTION
REQUIRED ON INSWING ONLY



2 VERTICAL CROSS SECTION
3 Inswing



Documents Prepared By: Lyndon F. Schmidt, P.E.
TEXAS P.E. #104123

RW BUILDING CONSULTANTS, INC.
P.O. Box 230 Valrico FL 33595
Phone No.: 813.659.9197
TEXAS BOARD OF PROFESSIONAL ENGINEERS
CERTIFICATE OF REGISTRATION # F-11852

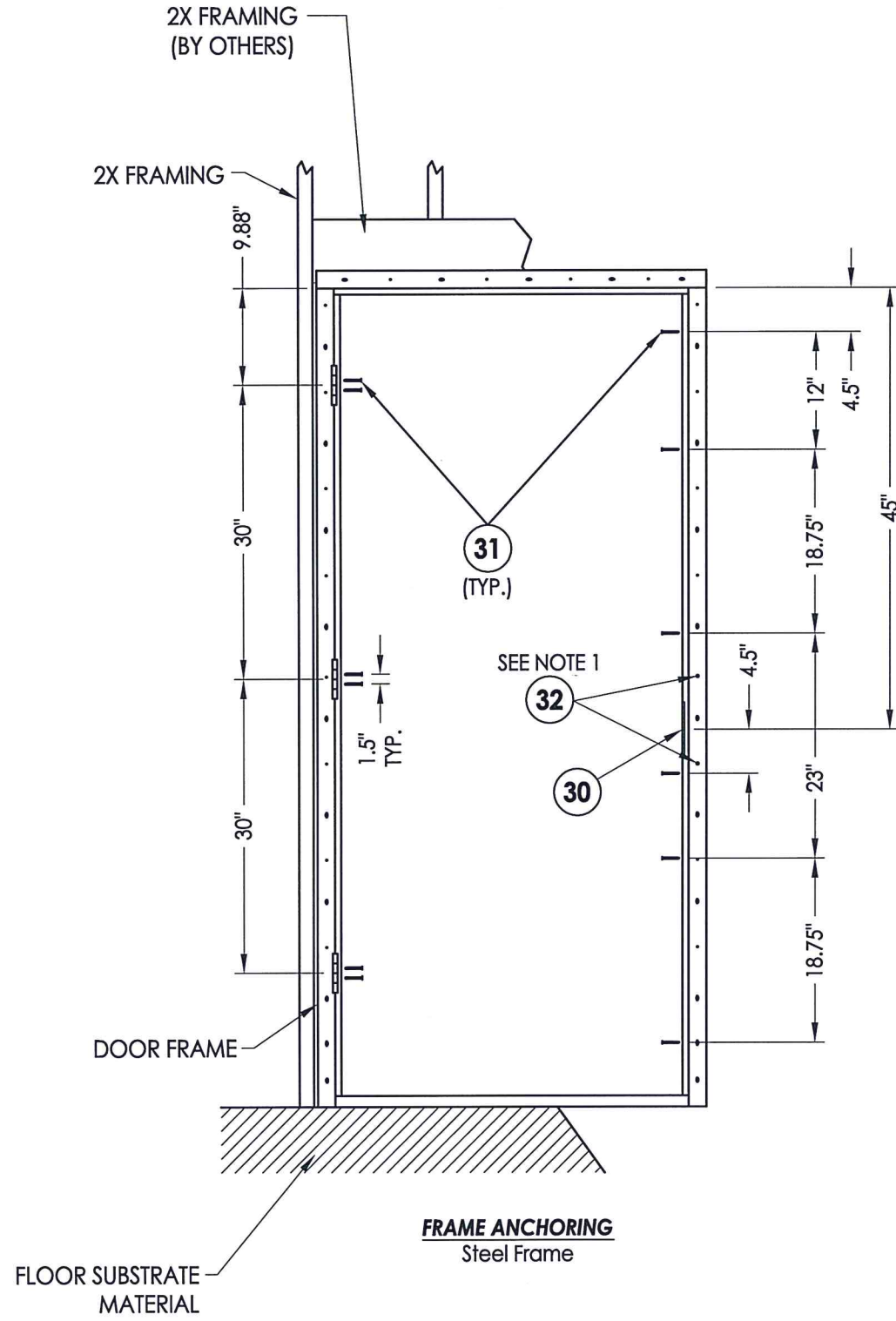
PRODUCT: dormakaba ELECT. MORITSE LOCK STEEL DOOR

PART OR ASSEMBLY: HORIZONTAL & VERTICAL CROSS SECTIONS

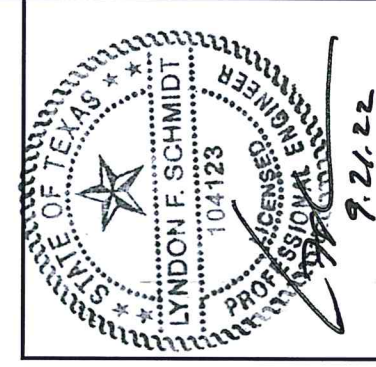
NO.	DATE	ADD NEW MODEL NUMBERS	LFS	BY	REVISIONS
1	9/21/22				

DATE: 1/13/22
SCALE: N.T.S.
DWG. BY: LFS
CHK. BY: RW
DRAWING NO.: TX-5258

SHEET 3 OF 5



NOTE:
1. ITEM #32 REQUIRED ON INSWING ONLY.



Documents Prepared By: Lyndon F. Schmidt, P.E.
TEXAS P.E. #104123

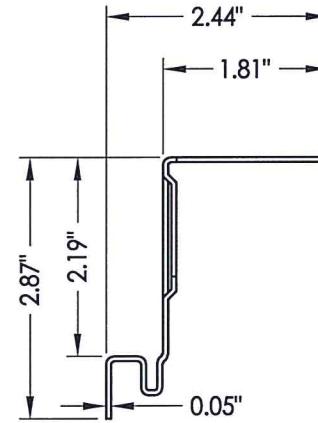
RW BUILDING CONSULTANTS, INC.
P.O. Box 230 Vairico FL 33595
Phone No.: 813.659.9197
TEXAS BOARD OF PROFESSIONAL ENGINEERS
CERTIFICATE OF REGISTRATION # F-11852

PRODUCT: dormakaba ELECT. MORITSE LOCK STEEL DOOR
PART OR ASSEMBLY: FRAME ANCHORING DETAILS (STEEL FRAME)

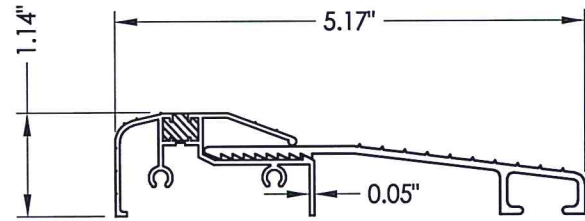
NO.	DATE	ADD NEW MODEL NUMBERS	LFS	BY
1	9/21/22			

DATE: 1/13/22
SCALE: N.T.S.
DWG. BY: LFS
CHK. BY: RW
DRAWING NO.: TX-5258
SHEET 4 OF 5

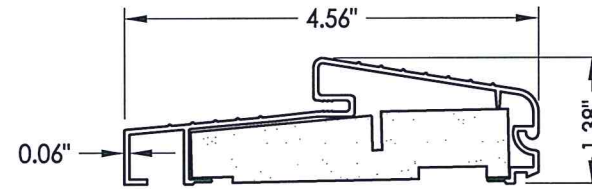
BILL OF MATERIALS		
ITEM #	DESCRIPTION	MATERIAL
A	2X FRAMING (SG >= 0.42)	WOOD
C	1/4" MAX. SHIM SPACE	-
20	TRU-TECH STEEL DOOR PANEL	-
21	DOOR SKIN (0.022" THK. STEEL, Fy = 35,300 PSI MIN.)	STEEL
23	FOAM CORE: 2.0 lbs/FT DENSITY, Baytherm 863	POLYURETHANE
25	#10-24 PFH MACHINE SCREW	STEEL
26	PART "A" FOAMSTOP SK-026-B	POLYURETHANE
27	PART "B" FOAMSTOP SK-026-B	POLYURETHANE
29	4" X 4" HINGE	STEEL
30	STRIKE PLATE	STEEL
31	#10 X 1-3/4" PFH WS (1-3/8" MIN. EMBEDMENT)	STEEL
32	#10 X 2" PPH WS (1-3/8" MIN. EMBEDMENT)	STEEL
33	HINGE & REINFORCEMENT	STEEL
35	FRAME	STEEL
37	COMPRESSION WEATHERSTRIPPING QLON QDS 650	FOAM
40	INSWING THRESHOLD	ALUM
41	DOOR SWEEP	-
42	OUTSWING THRESHOLD	ALUM/COMP
43	ADA THRESHOLD	ALUM



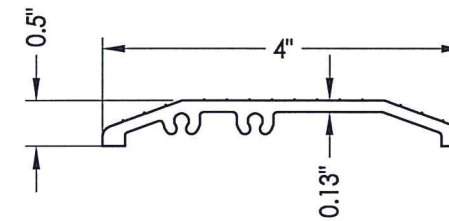
35 FRAME



40 INSWING THRESHOLD



42 OUTSWING THRESHOLD



43 ADA THRESHOLD



Documents Prepared By: Lyndon F. Schmidt, P.E.
TEXAS P.E. #104123

RW BUILDING CONSULTANTS, INC.
P.O. Box 230 Valrico FL 33595
Phone No.: 813.659.9197
TEXAS BOARD OF PROFESSIONAL ENGINEERS
CERTIFICATE OF REGISTRATION # F-11852

PRODUCT: dormakaba ELECT. MORITSE LOCK STEEL DOOR

PART OR ASSEMBLY: BILL OF MATERIALS & COMPONENTS

NO.	DATE	ADD NEW MODEL NUMBERS	LFS	BY
1	9/21/22			

DATE: 1/13/22
SCALE: N.T.S.
DWG. BY: LFS
CHK. BY: RW
DRAWING NO.: TX-5258
SHEET 5 OF 5