


130, 4-Panel, 3-Track, XIX-O, Test Unit

Last Updated 10/13/17

| Description | MIWD Part No. | Vendor Part No. | Rev. | CAD | Color | UOM | Qty |
|--|---------------|-----------------|------|-----|-----------|-----|---------------|
| MAIN FRAME : | | | | | | | |
| Frame Head, Finless, White | M252000C | M-2520 | - | yes | White | Ft. | 1 |
| Frame Head, Finless, Driftwood | M252000D | M-2520 | - | yes | Driftwood | Ft. | 1 |
| Frame Head, Finless, Bronze | M252000B | M-2520 | - | yes | Bronze | Ft. | 1 |
| Frame Head Track Fillers, White | M251200C | M-2512 | - | yes | White | Ft. | 3 |
| Frame Head Track Fillers, Driftwood | M251200D | M-2512 | - | yes | Driftwood | Ft. | 3 |
| Frame Head Track Fillers, Bronze | M251200B | M-2512 | - | yes | Bronze | Ft. | 3 |
| Frame Sill, Finless and Flange, Mill | M2522000 | M-2522 | - | yes | Mill | Ft. | 1 |
| Roller Track for Frame Sill, Finless and Flange, Mill | M2512000 | M-2511 | - | yes | Mill | Ft. | 3 |
| Optional Frame Sill Riser, Finless and Flange, 2.625 Ht., Mill | M2530000 | M-2530 | - | yes | Mill | Ft. | 1 |
| Optional Frame Sill Riser, Finless and Flange, 3.500 Ht., Mill | M2531000 | M-2531 | - | yes | Mill | Ft. | 1 |
| Frame Jambs, Finless, White | M252300C | M-2523 | - | yes | White | Ft. | 2 (1 LH/1 RH) |
| Frame Jambs, Finless, Driftwood | M252300D | M-2523 | - | yes | Driftwood | Ft. | 2 (1 LH/1 RH) |
| Frame Jambs, Finless, Bronze | M252300B | M-2523 | - | yes | Bronze | Ft. | 2 (1 LH/1 RH) |
| Frame Jamb Fillers, Finless and Flange, White | M251200C | M-2512 | - | yes | White | Ft. | 6 |
| Frame Jamb Fillers, Finless and Flange, Driftwood | M251200D | M-2512 | - | yes | Driftwood | Ft. | 6 |
| Frame Jamb Fillers, Finless and Flange, Bronze | M251200B | M-2512 | - | yes | Bronze | Ft. | 6 |
| Standard Handle Set, "D" Shaped Pulls, Non-Keyed, White | HD50002C | | - | no | White | Ea. | 2 |
| Standard Handle Set, "D" Shaped Pulls, Non-Keyed, Driftwood | HD50002D | | - | no | Driftwood | Ea. | 2 |
| Standard Handle Set, "D" Shaped Pulls, Non-Keyed, Black | HD50002L | | - | no | Bronze | Ea. | 2 |
| Panel Adapter - White | M251800C | M-2518 | - | yes | White | Ft. | 1 |
| Panel Adapter - Driftwood | M251800D | M-2518 | - | yes | Driftwood | Ft. | 1 |
| Panel Adapter - Bronze | M251800B | M-2518 | - | yes | Bronze | Ft. | 1 |
| Screw Package Containing the Following | | | | | | | |
| Frame Gasket Set, LH & RH, Head - Gray | MS50051C | | - | no | Gray | Ea. | 1 |
| Frame Gasket Set, LH & RH, Head - Black | MS50051L | | - | no | Black | Ea. | 1 |
| Frame Gasket Set, LH & RH, Sill - Gray | MS50050C | | - | no | Gray | Ea. | 1 |




Report #: 1435.02-106-12
 Date: 3/16/2018
 By: M. Stremmel

| | | | | | | | |
|---|----------|----------------|---|-----|-----------|-----|----|
| Frame Gasket Set, LH & RH, Sill - Black | MS50050L | | - | no | Black | Ea. | 1 |
| #8 x 3/4" PPHSMS 410 Stainless - Frame Assembly | FS001730 | | | no | | Ea. | 14 |
| 3/8" Dia Hole Plugs for Adjustment Holes - White | WS30025C | | - | no | Nylon | Ea. | 8 |
| 3/8" Dia Hole Plugs for Adjustment Holes - Driftwood | WS30025D | | - | no | Nylon | Ea. | 8 |
| 3/8" Dia Hole Plugs for Adjustment Holes - Bronze | WS30025B | | - | no | Nylon | Ea. | 8 |
| .750 Hi x 1.250 W x 3.000 L, w-strip pad, adhesive, over and under interlocks | WS40000G | 751250GYAD3000 | - | no | Syn. Pile | Ea. | 6 |
| Bump Stop, Base and Cover Set, White | IM20800C | | - | yes | White | Ea. | 2 |
| Bump Stop, Base and Cover Set, Bronze | IM20800B | | - | yes | Bronze | Ea. | 2 |
| Bump Stop, Base and Cover Set, Driftwood | IM20800D | | - | yes | Driftwood | Ea. | 2 |
| #8 x 1" PPH TEK, Attach Bump Stop, White | FS00309C | | - | no | White | Ea. | 4 |
| #8 x 1" PPH TEK, Attach Bump Stop, Adobe | FS00309J | | - | no | Adobe | Ea. | 4 |
| #8 x 1" PPH TEK, Attach Bump Stop, Bronze | FS00309Q | | - | no | Bronze | Ea. | 4 |
| Fixed Panel Retainer Bracket, White | M251900C | M-2519 | - | yes | White | Ft. | 4 |
| Fixed Panel Retainer Bracket, Driftwood | M251900D | M-2519 | - | yes | Driftwood | Ft. | 4 |
| Fixed Panel Retainer Bracket, Bronze | M251900B | M-2519 | - | yes | Bronze | Ft. | 4 |
| #8 x 1" PPH TEK, Attach Fixed Panel Retainer to panel and Frame Jamb, White | FS00309C | | - | no | White | Ea. | 16 |
| #8 x 1" PPH TEK, Attach Fixed Panel Retainer to panel and Frame Jamb, Adobe | FS00309J | | - | no | Adobe | Ea. | 16 |
| #8 x 1" PPH TEK, Attach Fixed Panel Retainer to panel and Frame Jamb, Bronze | FS00309Q | | - | no | Bronze | Ea. | 16 |
| "X" and "xx" Panel: One of each Required, One LH and One RH. Caution Inside VS Outside Tracks. | | | | | | | |
| Panel Top Rail, White | M250000C | M-2500 | - | yes | White | Ft. | 1 |
| Panel Top Rail, Driftwood | M250000D | M-2500 | - | yes | Driftwood | Ft. | 1 |
| Panel Top Rail, Bronze | M250000B | M-2500 | - | yes | Bronze | Ft. | 1 |
| Panel Bottom Rail, White | M250000C | M-2500 | - | yes | White | Ft. | 1 |
| Panel Bottom Rail, Driftwood | M250000D | M-2500 | - | yes | Driftwood | Ft. | 1 |
| Panel Bottom Rail, Bronze | M250000B | M-2500 | - | yes | Bronze | Ft. | 1 |
| .187 x .250 Weatherstrip for top and bottom rails and injection molded filler | WS30060G | | - | no | Grey | Ft. | 4 |
| .750 Hi x 1.250 W x 1.500 L, w-strip pad, adhesive, Each end of top/bottom rails | WS40001G | 751250GYAD1500 | - | no | Syn. Pile | Ea. | 4 |
| Panel Stiles, White | M250200C | M-2502 | - | yes | White | Ft. | 2 |
| Panel Stiles, Driftwood | M250200D | M-2502 | - | yes | Driftwood | Ft. | 2 |
| Panel Stiles, Bronze | M250200B | M-2502 | - | yes | Bronze | Ft. | 2 |

| | | |
|---|-----------|----------------|
|  | Report #: | 1435.02-106-12 |
| | Date: | 3/16/2018 |
| | By: | M. Stremmel |

| | | | | | | | |
|---|----------|-----------------|---|-----|------------|------|----------------|
| .187 x .250 Weatherstrip (Lock Stile) | WS30060G | | - | no | Grey | Ft. | 2 |
| Optional Rebar for Interlock Stile - Mill | M2516000 | M-2516 | - | yes | Mill | Ft. | 1 |
| Weatherstrip Plug, Injection Moulded, Each Corner | IM355000 | | - | yes | Black | Ea. | 4 |
| #10 x 1" Hex Head SMS, S.S., Panel Assembly | FS002561 | | | | SS | Ea. | 8 |
| Panel Roller, Tandem, SS, Precision, 1.500, With Spacer | HD300300 | SS7143DSPA | - | yes | eel/Compos | Ea. | 2 |
| #8 x 1/2" PFHMSA, Attach Rollers to Bottom Rail | FS003073 | | - | no | ZI PL ST | Ea. | 4 |
| Setting Blocks for Glass - 1/8" x 1" x 1" | MS100090 | PSA-1 | | | Black | Ea. | Varies |
| Backbedding - Pecora 896 610 Trans TBS UV03B | SL000760 | Pecora 896 Clr. | | | Clear | Gal. | Varies |
| Glass as Required, IG, Impact, NON-Impact | | | | | | Ea. | 1 |
| Glazing Bead, IG, Impact and Non-Impact - White | M250500C | M-2505 | - | yes | White | Ft. | 2 Hor./2 Vert. |
| Glazing Bead, IG, Impact and Non-Impact - Driftwood | M250500D | M-2505 | - | yes | Driftwood | Ft. | 2 Hor./2 Vert. |
| Glazing Bead, IG, Impact and Non-Impact - Bronze | M250500B | M-2505 | - | yes | Bronze | Ft. | 2 Hor./2 Vert. |
| .187 x .160 w'strip for glazing beads | WS10024G | | | | Gray | Ft. | 2 hor./2 vert. |
| Panel Interlock - White | M250300C | M-2503 | - | yes | White | Ft. | 1 |
| Panel Interlock - Driftwood | M250300D | M-2503 | - | yes | Driftwood | Ft. | 1 |
| Panel Interlock - Bronze | M250300B | M-2503 | - | yes | Bronze | Ft. | 1 |
| .187 x .250 Weatherstrip for Panel Interlock | WS30060G | | - | no | Grey | Ft. | 1 |
| Bulb Seal fo Panel Interlock | MS50021L | PPI 0791-1 | - | no | Black | Ft. | 1 |
| #8 x 7/8" PPHTEK, Attach Interlock to Panel Stile | FS001390 | | - | no | Mill | Ea. | 5 |
| Interlock Screw Cover, Snap-In - White | M250400C | M-2504 | - | yes | White | Ft. | 1 |
| Interlock Screw Cover, Snap-In - Adobe | M250400D | M-2504 | - | yes | Driftwood | Ft. | 1 |
| Interlock Screw Cover, Snap-In - Bronze | M250400B | M-2504 | - | yes | Bronze | Ft. | 1 |
| Dual Mortise Lock Set w/faceplate, Stainless Steel | L0000160 | Gemini II | - | no | Stainless | Ea. | 1 |
| #8 x 1/2" PFHMSA, Attach Mortise Lock to Lock Stile | FS003073 | | - | no | ZI PL ST | Ea. | 2 |



Molimo™
Architectural Product Testing

Report #: 1435.02-106-12

Date: 3/16/2018

By: M. Stremmel

| | | | | | | | |
|--|----------|-----------------|---|-----|--------------|------|----------------|
| "I" Panel | | | | | | | |
| Panel Top Rail, White | M250000C | M-2500 | - | yes | White | Ft. | 1 |
| Panel Top Rail, Driftwood | M250000D | M-2500 | - | yes | Driftwood | Ft. | 1 |
| Panel Top Rail, Bronze | M250000B | M-2500 | - | yes | Bronze | Ft. | 1 |
| Panel Bottom Rail, White | M250000C | M-2500 | - | yes | White | Ft. | 1 |
| Panel Bottom Rail, Driftwood | M250000D | M-2500 | - | yes | Driftwood | Ft. | 1 |
| Panel Bottom Rail, Bronze | M250000B | M-2500 | - | yes | Bronze | Ft. | 1 |
| .187 x .250 Weatherstrip for top and bottom rails and injection molded filler | WS30060G | | - | no | Grey | Ft. | 4 |
| .750 Hi x 1.250 W x 1.500 L, w-strip pad, adhesive, Each end of top/bottom rails | WS40001G | 751250GYAD1500 | - | no | Syn. Pile | Ea. | 4 |
| Panel Stiles, White | M250200C | M-2502 | - | yes | White | Ft. | 2 |
| Panel Stiles, Driftwood | M250200D | M-2502 | - | yes | Driftwood | Ft. | 2 |
| Panel Stiles, Bronze | M250200B | M-2502 | - | yes | Bronze | Ft. | 2 |
| Optional Rebar for Interlock Stile - Mill | M2516000 | M-2516 | - | yes | Mill | Ft. | 2 |
| Weatherstrip Plug, Injection Moulded, Each Corner | IM355000 | | - | yes | Black | Ea. | 4 |
| #10 x 1" Hex Head SMS, S.S., Panel Assembly | FS002561 | | | | SS | Ea. | 8 |
| Panel Roller, Tandem, SS, Precision, 1.500, With Spacer | HD300300 | SS7143DSPA | - | yes | Steel/Compos | Ea. | 2 |
| #8 x 1/2" PFHMSA, Attach Rollers to Bottom Rail | FS003073 | | - | no | ZI PL ST | Ea. | 4 |
| Setting Blocks for Glass - 1/8" x 1" x 1" | MS100090 | PSA-1 | | | Black | Ea. | Varies |
| Backbedding - Pecora 896 610 Trans TBS UV03B | SL000760 | Pecora 896 Clr. | | | Clear | Gal. | Varies |
| Glass as Required, IG, Impact, NON-Impact | | | | | | Ea. | 1 |
| Glazing Bead, IG, Impact and Non-Impact - White | M250500C | M-2505 | - | yes | White | Ft. | 2 Hor./2 Vert. |
| Glazing Bead, IG, Impact and Non-Impact - Driftwood | M250500D | M-2505 | - | yes | Driftwood | Ft. | 2 Hor./2 Vert. |
| Glazing Bead, IG, Impact and Non-Impact - Bronze | M250500B | M-2505 | - | yes | Bronze | Ft. | 2 Hor./2 Vert. |
| .187 x .160 w'strip for glazing beads | WS10024G | | | | Gray | Ft. | 2 hor./2 vert. |
| Panel Interlock - White | M250300C | M-2503 | - | yes | White | Ft. | 2 |
| Panel Interlock - Driftwood | M250300D | M-2503 | - | yes | Driftwood | Ft. | 2 |
| Panel Interlock - Bronze | M250300B | M-2503 | - | yes | Bronze | Ft. | 2 |



Report #: 1435.02-106-12

Date: 3/16/2018

By: M. Stremmel

| | | | | | | | |
|---|-----------|----------------|---|-----|------------|-----|--------|
| .187 x .250 Weatherstrip for Panel Interlock | WS30060G | | - | no | Grey | Ft. | 2 |
| Bulb Seal fo Panel Interlock | MS50021L | PPI 0791-1 | - | no | Black | Ft. | 2 |
| #8 x 7/8" PPHEK, Attach Interlock to Panel Stile | FS001390 | | - | no | Mill | Ea. | 10 |
| Interlock Screw Cover, Snap-In - White | M-250400C | M-2504 | - | yes | White | Ft. | 2 |
| Interlock Screw Cover, Snap-In - Adobe | M-250400D | M-2504 | - | yes | Driftwood | Ft. | 2 |
| Interlock Screw Cover, Snap-In - Bronze | M-250400B | M-2504 | - | yes | Bronze | Ft. | 2 |
| "OO" Panel | | | | | | | |
| Panel Top Rail, White | M250000C | M-2500 | - | yes | White | Ft. | 1 |
| Panel Top Rail, Driftwood | M250000D | M-2500 | - | yes | Driftwood | Ft. | 1 |
| Panel Top Rail, Bronze | M250000B | M-2500 | - | yes | Bronze | Ft. | 1 |
| Panel Bottom Rail, White | M250000C | M-2500 | - | yes | White | Ft. | 1 |
| Panel Bottom Rail, Driftwood | M250000D | M-2500 | - | yes | Driftwood | Ft. | 1 |
| Panel Bottom Rail, Bronze | M250000B | M-2500 | - | yes | Bronze | Ft. | 1 |
| .187 x .250 Weatherstrip for top and bottom rails and injection molded filler | WS30060G | | - | no | Grey | Ft. | 4 |
| .750 tall x 1.250 wide x 1.500 long Adhesive W'Strip Plug, Ends of top/bottom rails | WS40001G | 751250GYAD1500 | - | no | Syn. Pile | Ea. | 4 |
| Panel Stiles, White | M250200C | M-2502 | - | yes | White | Ft. | 2 |
| Panel Stiles, Driftwood | M250200D | M-2502 | - | yes | Driftwood | Ft. | 2 |
| Panel Stiles, Bronze | M250200B | M-2502 | - | yes | Bronze | Ft. | 2 |
| .187 x .250 Weatherstrip for panel Stiles (Frame Jamb Fixed Stile Only) | WS30060G | | - | no | Grey | Ft. | 2 |
| Optional Rebar for Interlock Stile - Mill | M2516000 | M-2516 | - | yes | Mill | Ft. | 1 |
| Weatherstrip Plug, Injection Moulded, Each Corner | IM355000 | | - | yes | Black | Ea. | 4 |
| #10 x 1" Hex Head SMS, S.S., Panel Assembly | FS002561 | | | | SS | Ea. | 8 |
| Panel Rollers, Tandem, SS, Precision, 1.500, With Spacer | HD300300 | SS7143DSPA | - | yes | eel/Compos | Ea. | 2 |
| #8 x 1/2" PFHMSA, Attach Rollers to Bottom Rail | FS003073 | | - | no | ZI PL ST | Ea. | 4 |
| Setting Blocks for Glass - 1/8" x 1" x 1" | MS100090 | PSA-1 | | | Black | Ea. | Varies |




Molimo™
Architectural Product Testing

Report #: 1435.02-106-12

Date: 3/16/2018

By: M. Stremmel

| | | | | | | | |
|---|----------|-----------------|---|-----|-----------|------|----------------|
| Backbedding - Pecora 896 610 Trans TBS UV03B | SL000760 | Pecora 896 Clr. | | | Clear | Gal. | Varies |
| Glass as Required, IG, Impact, NON-Impact | | | | | | Ea. | 1 |
| Glazing Bead, IG, Impact and Non-Impact - White | M250500C | M-2505 | - | yes | White | Ft. | 2 Hor./2 Vert. |
| Glazing Bead, IG, Impact and Non-Impact - Driftwood | M250500D | M-2505 | - | yes | Driftwood | Ft. | 2 Hor./2 Vert. |
| Glazing Bead, IG, Impact and Non-Impact - Bronze | M250500B | M-2505 | - | yes | Bronze | Ft. | 2 Hor./2 Vert. |
| .187 x .160 w'strip for glazing beads | WS10024G | | | | Gray | Ft. | 2 hor./2 vert. |
| Standard 144 Ext. Screen (From Rite Screen) | | | | | | | |
| Latch Screen, 144 Ext. Equipped with the following: | | | | | | | 1 |
| 856 Front Handle | | | | | | | |
| 857 Back Handle | | | | | | | |
| 478 Stainless Side Adjust Rollers | | | | | | | |
| Screws #8 x 1/2" Stainless | | | | | | | |
| Trailing Screen, 144 Ext. Equipped with the following | | | | | | | 1 |
| 478 Stainless Side Adjust Rollers | | | | | | | |
| Weatherstrip 45018730/WHWPSR | | | | | | | |
| Adapter to connect the two screens together | | | | | | | 1 |
| | | | | | | | |
| | | | | | | | |
| | | | | | | | |



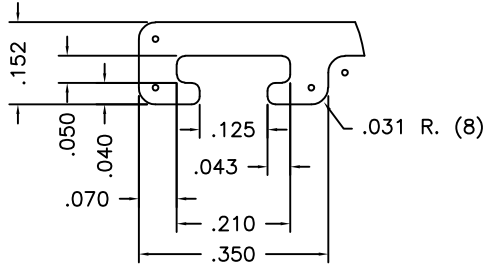
Molimo[™]
Architectural Product Testing

Report #: 1435.02-106-12

Date: 3/16/2018

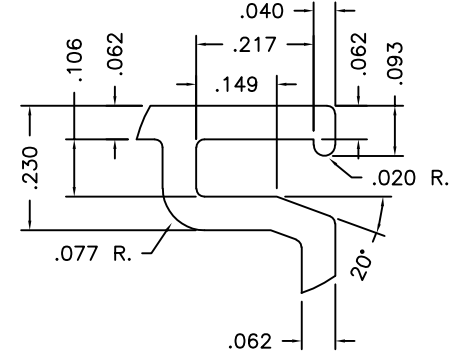
By: M. Stremmel

Detail "A"
4 x Full

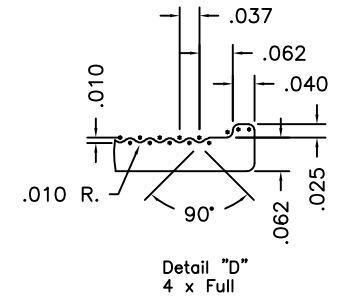
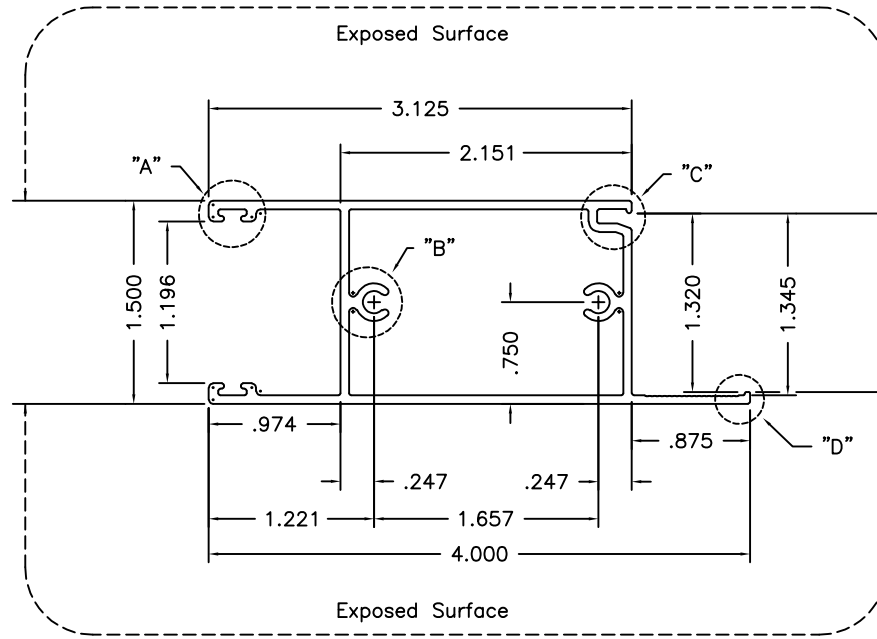
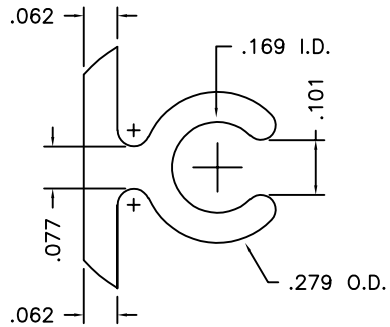


| Description | Length | Finish | 8-Digit Part # |
|-----------------------|--------|-----------|----------------|
| Panel Top/Bottom Rail | 148" | White | M250000C |
| Panel Top/Bottom Rail | 148" | Driftwood | M250000D |
| Panel Top/Bottom Rail | 148" | Bronze | M250000B |

Detail "C"
4 x Full



Detail "B"
4 x Full



Molimo
Architectural Product Testing
Report #: 1435.02-106-12
Date: 3/16/2018
By: M. Stremmel

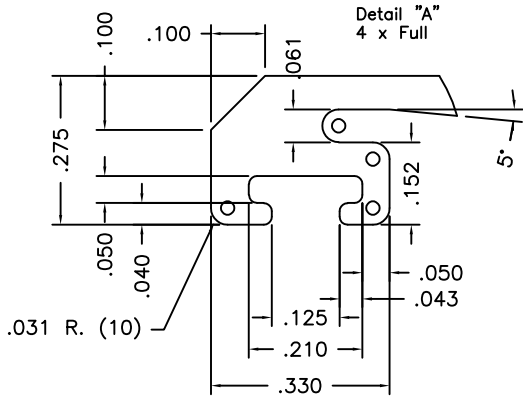
| | |
|----------------------|-----------------------|
| CLASS: Hollow | PAIN PERIMETER: 7.345 |
| THERMAL CAVITY: None | CIRCLE SIZE: 4.500 |

| | |
|-------------------|---|
| MATERIAL: 6005-T5 | MIWD MI WINDOWS AND DOORS 650 WEST MARKET STREET GRATZ, PA 17030-0370 The information, design or data shown on this document or electronic media is the exclusive property of MI Windows and Doors, LLC. It is considered confidential and proprietary and is made available for limited use only. Its use or reproduction without the expressed written consent of MI Windows and Doors, LLC., is prohibited. |
| FINISH: Painted | |
| AREA: .727 | |
| WEIGHT: .873 | |
| PERIMETER: 24.057 | |

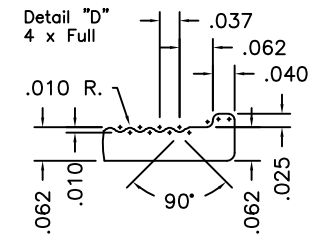
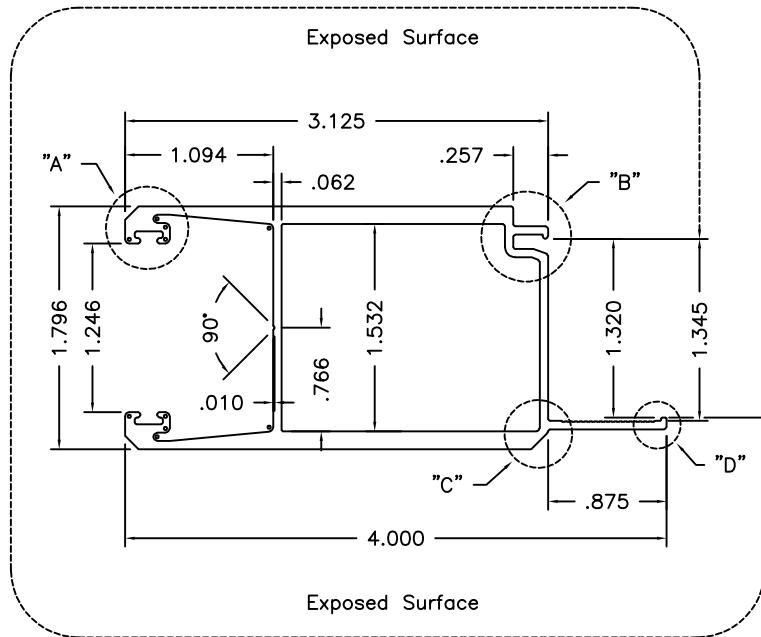
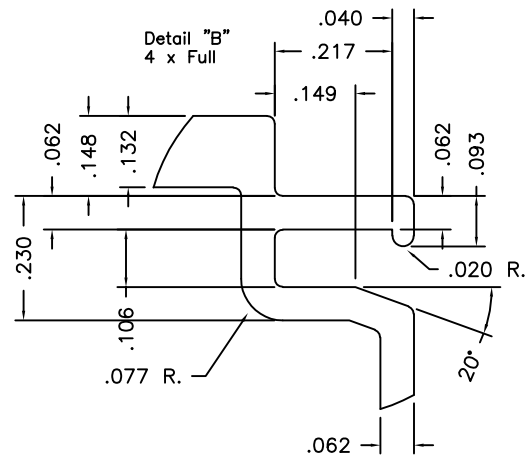
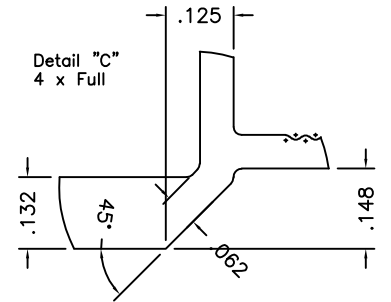
| |
|---|
| UNSPECIFIED WALL: .062 |
| BREAK ALL CORNERS R.015, UNLESS OTHERWISE SPECIFIED |

| | |
|---|---------------------------|
| DESCRIPTION: Panel Top Rail Aluminum Extrusion | DATE: 06/03/15 |
| PRODUCT: 120/130/140 Families | PART NUMBER: M-2500 |
| SCALE: 1 : 1 | DRAWING NUMBER: AE-000029 |
| DFTM: T.C. | |

| | | | |
|---------|---------------------------------------|-----------|---------|
| 069A-15 | Initial Release For Extrusion Tooling | 06/29/15 | T.C. |
| LTR | ECN # | REVISIONS | DATE BY |



| Description | Length | Finish | 8-Digit Part # |
|-------------|--------|-----------|----------------|
| Panel Stile | 192" | White | M250200C |
| Panel Stile | 192" | Driftwood | M250200D |
| Panel Stile | 192" | Bronze | M250200B |



Molimo™
Architectural Product Testing

Report #: 1435.02-106-12

Date: 3/16/2018

By: M. Stremmel

| | |
|----------------------|------------------------|
| CLASS: Hollow | PAIN PERIMETER: 13.042 |
| THERMAL CAVITY: None | CIRCLE SIZE: 4.375 |

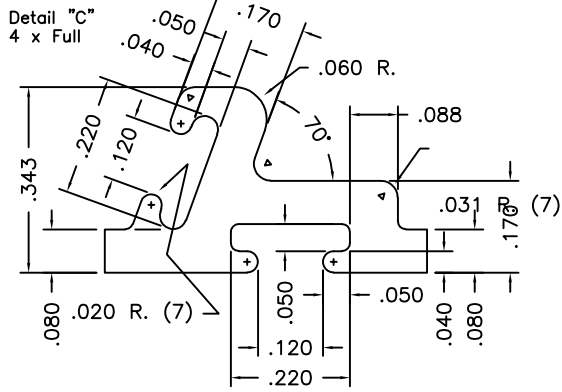
| |
|-------------------|
| MATERIAL: 6005-T5 |
| FINISH: Painted |
| AREA: 1.042 |
| WEIGHT: 1.250 |
| PERIMETER: 22.683 |

MIWD MI WINDOWS AND DOORS
650 WEST MARKET STREET GRATZ, PA 17030-0370

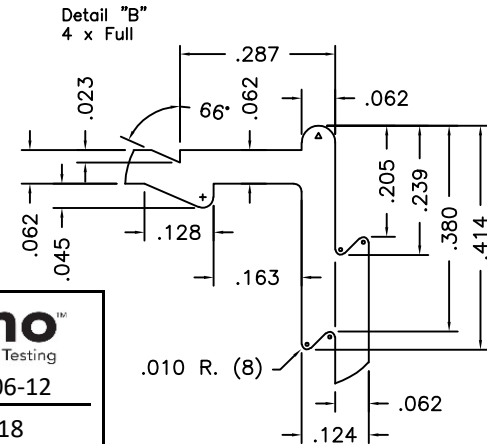
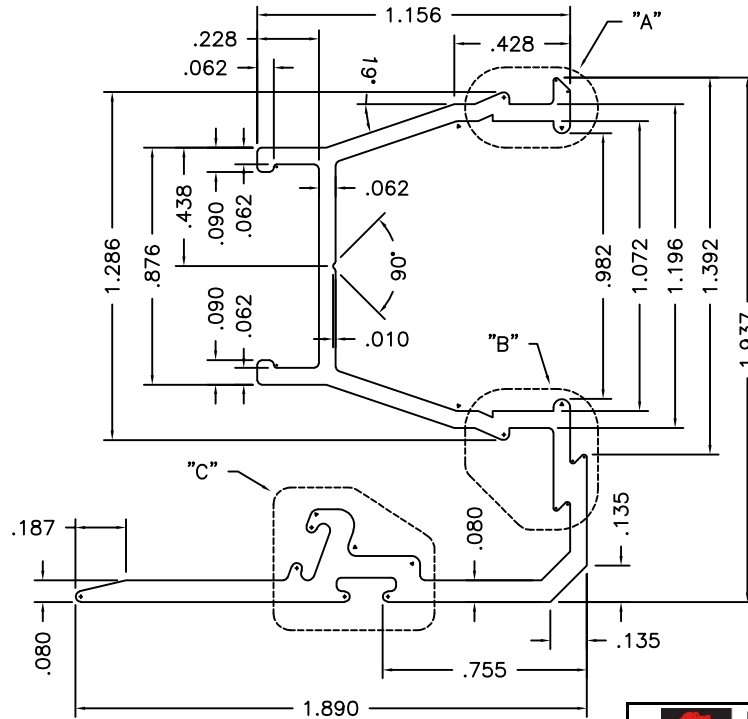
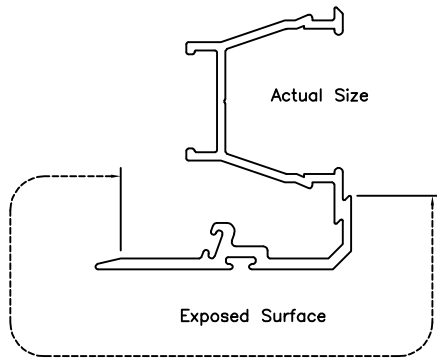
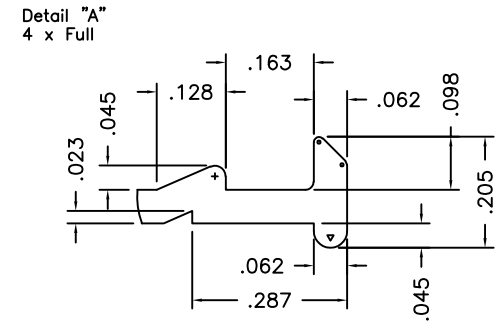
The information, design or data shown on this document or electronic media is the exclusive property of MI Windows and Doors, LLC. It is considered confidential and proprietary and is made available for limited use only. Its use or reproduction without the expressed written consent of MI Windows and Doors, LLC., is prohibited.

| | |
|---|---------------------------|
| DESCRIPTION: Panel Stiles Aluminum Wxtrusion | |
| PRODUCT: 120/130/140 Family | DATE: 06/04/15 |
| SCALE: 1 : 1 | PART NUMBER: M-2502 |
| DFTM: T.C. | DRAWING NUMBER: AE-000031 |

| LTR | ECN # | REVISIONS | DATE | BY |
|-----|---------|---------------------------------------|----------|------|
| - | 069A-15 | Initial Release For Extrusion Tooling | 06/29/15 | T.C. |



| Description | Length | Finish | 8-Digit Part # |
|-----------------|--------|-----------|----------------|
| Panel Interlock | 192" | White | M250300C |
| Panel Interlock | 192" | Driftwood | M250300D |
| Panel Interlock | 192" | Bronze | M250300B |



Molimo
Architectural Product Testing

Report #: 1435.02-106-12

Date: 3/16/2018

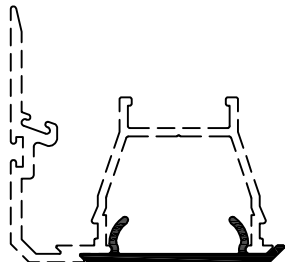
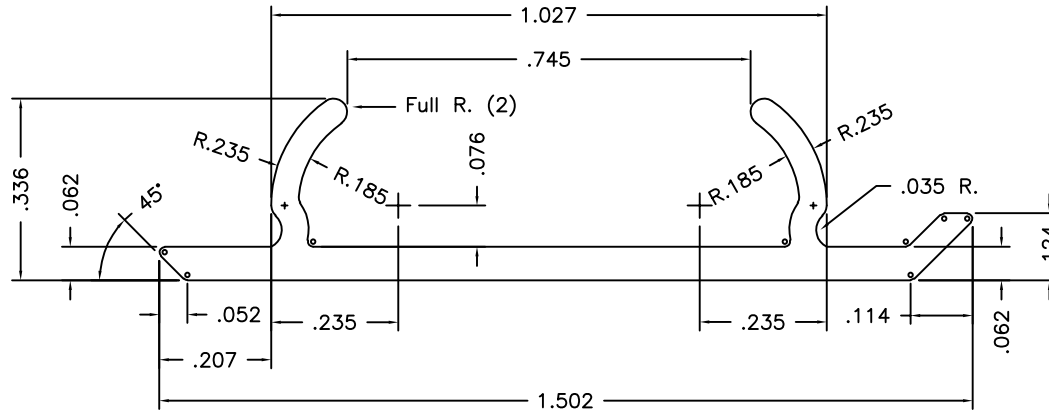
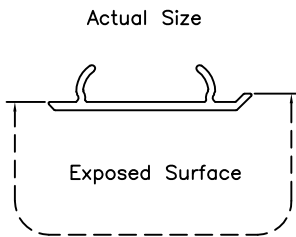
By: M. Stremmel

| | |
|----------------------|------------------------|
| CLASS: Solid | PAINT PERIMETER: 2.859 |
| THERMAL CAVITY: None | CIRCLE SIZE: 3" |

| | |
|-------------------|---|
| MATERIAL: 6005-T5 | MIWD MI WINDOWS AND DOORS 650 WEST MARKET STREET GRATZ, PA 17030-0370 The information, design or data shown on this document or electronic media is the exclusive property of MI Windows and Doors, LLC. It is considered confidential and proprietary and is made available for limited use only. Its use or reproduction without the expressed written consent of MI Windows and Doors, LLC., is prohibited. |
| FINISH: Painted | |
| AREA: .442 | |
| WEIGHT: .531 | |
| PERIMETER: 12.828 | UNSPECIFIED WALL: .062 BREAK ALL CORNERS R.015, UNLESS OTHERWISE SPECIFIED |

| | | |
|--|-------------------------------|----------------|
| DESCRIPTION: Panel Interlock Aluminum Extrusion | PRODUCT: 120/130/140 Families | DATE: 06/04/15 |
| SCALE: 2 : 1 | PART NUMBER: M-2503 | |
| DFTM: T.C. | DRAWING NUMBER: AE-000032 | |

| LTR | ECN # | REVISIONS | DATE | BY | T.C. |
|-----|---------|---------------------------------------|----------|------|------|
| - | 069A-15 | Initial Release For Extrusion Tooling | 06/29/15 | T.C. | |



Molimo[™]
Architectural Product Testing

Report #: 1435.02-106-12

Date: 3/16/2018

By: M. Stremmel

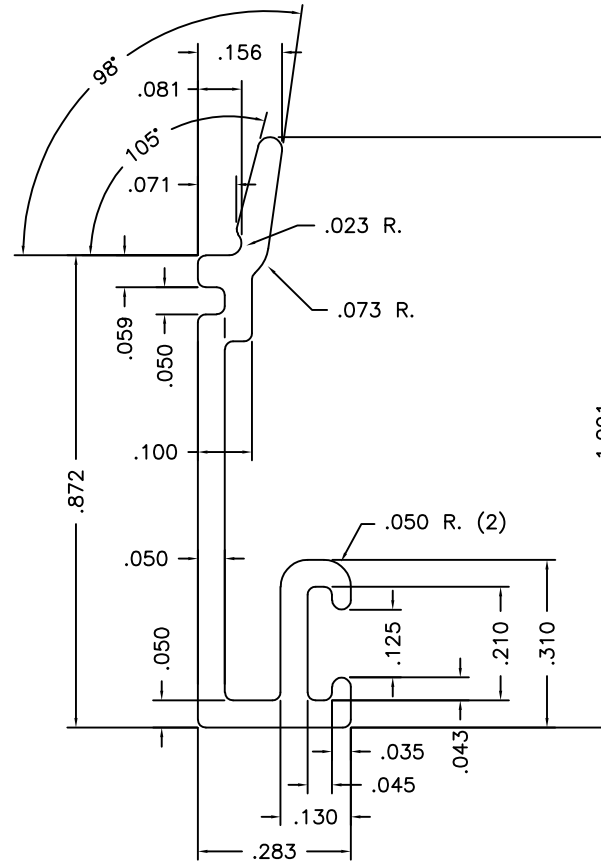
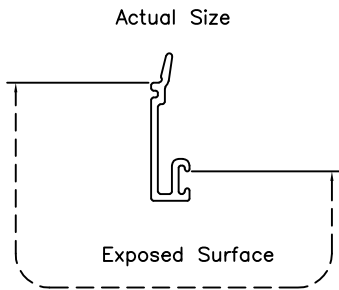
| Description | Length | Finish | 8-Digit Part # |
|-----------------|--------|-----------|----------------|
| Interlock Cover | 192" | White | M250400C |
| Interlock Cover | 192" | Driftwood | M250400D |
| Interlock Cover | 192" | Bronze | M250400B |

| | |
|----------------------|-----------------------|
| CLASS: Solid | PAIN PERIMETER: 1.606 |
| THERMAL CAVITY: None | CIRCLE SIZE: 1 3/4" |

| | |
|-------------------|--|
| MATERIAL: 6005-T5 | MIWD MI WINDOWS AND DOORS <small>650 WEST MARKET STREET GRATZ, PA 17030-0370</small> The information, design or data shown on this document or electronic media is the exclusive property of MI Windows and Doors, LLC. It is considered confidential and proprietary and is made available for limited use only. Its use or reproduction without the expressed written consent of MI Windows and Doors, LLC., is prohibited. |
| FINISH: Painted | |
| AREA: .122 | |
| WEIGHT: .147 | |
| PERIMETER: 4.280 | |

| | |
|--|---------------------------|
| DESCRIPTION: Interlock Cover Aluminum Extrusion | |
| PRODUCT: 120/130/140 Families | DATE: 06/04/15 |
| SCALE: 4 : 1 | PART NUMBER: M-2504 |
| DFTM: T.C. | DRAWING NUMBER: AE-000033 |

| | | | | |
|-----|---------|---------------------------------------|----------|------|
| - | 069A-15 | Initial Release For Extrusion Tooling | 06/29/15 | T.C. |
| LTR | ECN # | REVISIONS | DATE | BY |



| Description | Length | Finish | 8-Digit Part # |
|----------------------------------|--------|-----------|----------------|
| I.G. Bead, Impact and Non-Impact | 180" | White | M250500C |
| I.G. Bead, Impact and Non-Impact | 180" | Driftwood | M250500D |
| I.G. Bead, Impact and Non-Impact | 180" | Bronze | M250500B |

Report #: 1435.02-106-12

Date: 3/16/2018

By: M. Stremmel

| | |
|----------------------|------------------------|
| CLASS: Solid | PAINT PERIMETER: 1.707 |
| THERMAL CAVITY: None | CIRCLE SIZE: 1.250 |

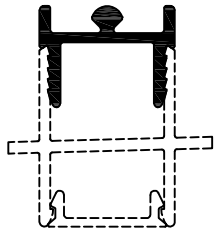
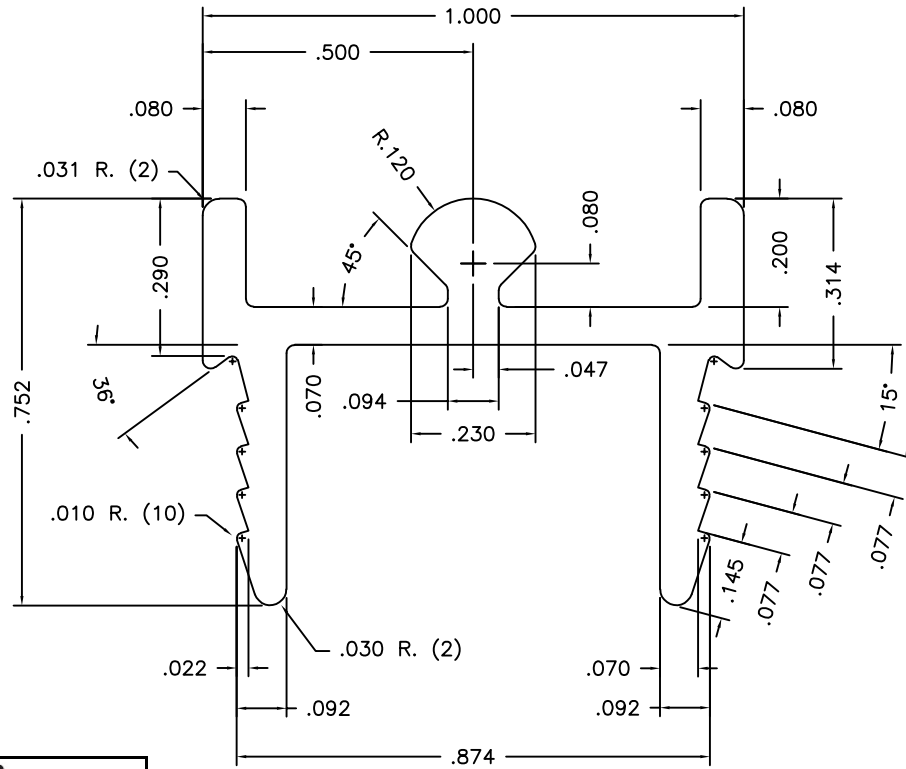
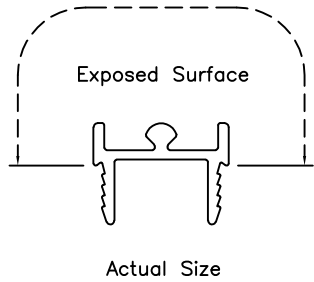
| |
|-------------------|
| MATERIAL: 6063-T5 |
| FINISH: Painted |
| AREA: .092 |
| WEIGHT: .110 |
| PERIMETER: 3.643 |

MIWD MI WINDOWS AND DOORS
650 WEST MARKET STREET GRATZ, PA 17030-0370

The information, design or data shown on this document or electronic media is the exclusive property of MI Windows and Doors, LLC. It is considered confidential and proprietary and is made available for limited use only. Its use or reproduction without the expressed written consent of MI Windows and Doors, LLC., is prohibited.

| | |
|--|---------------------------|
| DESCRIPTION: IG Glazing Bead Aluminum Extrusion | DATE: 06/04/15 |
| PRODUCT: 120/130/140 Families | PART NUMBER: M-2505 |
| SCALE: 4 : 1 | DRAWING NUMBER: AE-000034 |
| DFTM: T.C. | |

| LTR | ECN # | REVISIONS | DATE | BY |
|-----|---------|---------------------------------------|----------|------|
| - | 069A-15 | Initial Release For Extrusion Tooling | 06/29/15 | T.C. |



Molimo™
Architectural Product Testing

Report #: 1435.02-106-12

Date: 3/16/2018

By: M. Stremmel

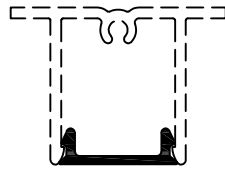
| Description | Length | Finish | 8-Digit Part # |
|--------------|--------|--------|----------------|
| Roller Track | 180" | Mill | M2511000 |

| | |
|----------------------|-----------------------|
| CLASS: Solid | PAINT PERIMETER: None |
| THERMAL CAVITY: None | CIRCLE SIZE: 1.250 |

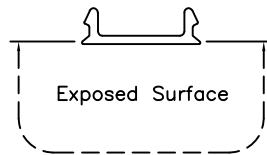
| | |
|-------------------|---|
| MATERIAL: 6063-T5 | MIWD MI WINDOWS AND DOORS 650 WEST MARKET STREET GRATZ, PA 17030-0370 The information, design or data shown on this document or electronic media is the exclusive property of MI Windows and Doors, LLC. It is considered confidential and proprietary and is made available for limited use only. Its use or reproduction without the expressed written consent of MI Windows and Doors, LLC., is prohibited. |
| FINISH: Mill | |
| AREA: .214 | |
| WEIGHT: .256 | |
| PERIMETER: 5.368 | UNSPECIFIED WALL: .070 |
| | BREAK ALL CORNERS R.015, UNLESS OTHERWISE SPECIFIED |

| | |
|---|---------------------------|
| DESCRIPTION: Frame Sill Snap-In Roller Track Aluminum Extrusion | |
| PRODUCT: 120/130/140 Families | DATE: 06/04/15 |
| SCALE: 4 : 1 | PART NUMBER: M-2511 |
| DFTM: T.C. | DRAWING NUMBER: AE-000040 |

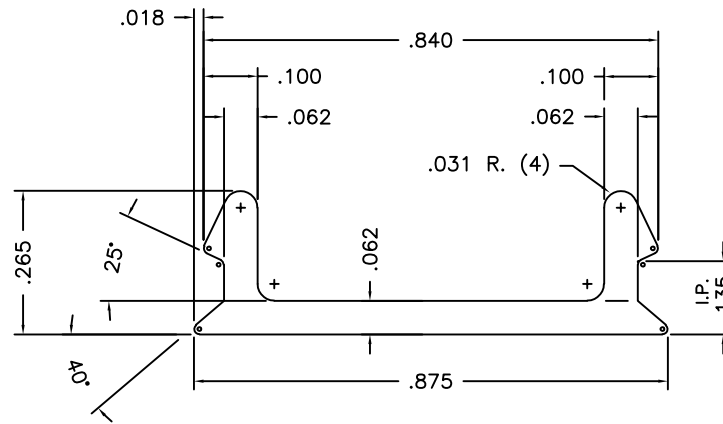
| LTR | ECN # | REVISIONS | DATE | BY |
|-----|---------|---------------------------------------|----------|------|
| - | 069B-15 | Initial release for extrusion tooling | 07/08/15 | T.C. |



Actual Size



Exposed Surface



Molimo
Architectural Product Testing

Report #: 1435.02-106-12

Date: 3/16/2018

By: M. Stremmel

| Description | Length | Finish | 8-Digit Part # |
|-------------|--------|-----------|----------------|
| Filler | 180" | White | M251200C |
| Filler | 180" | Driftwood | M251200D |
| Filler | 180" | Bronze | M251200B |

| | |
|----------------------|-----------------------|
| CLASS: Solid | PAINT PERIMETER: .904 |
| THERMAL CAVITY: None | CIRCLE SIZE: 1.000 |

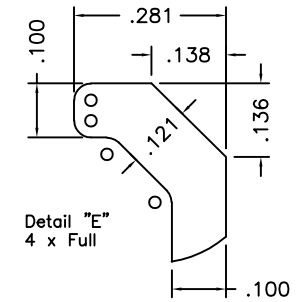
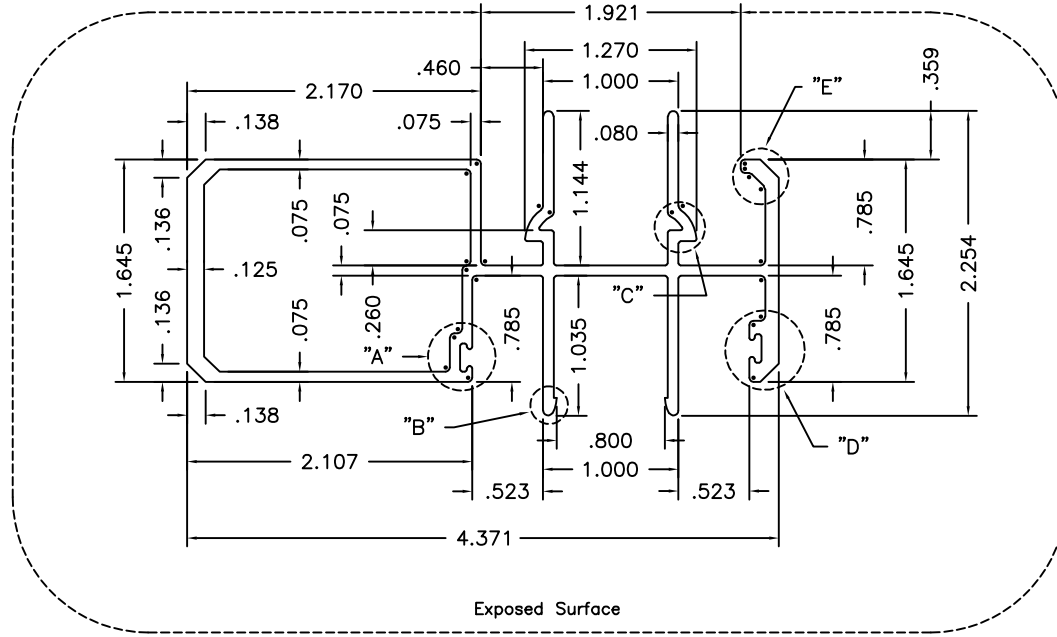
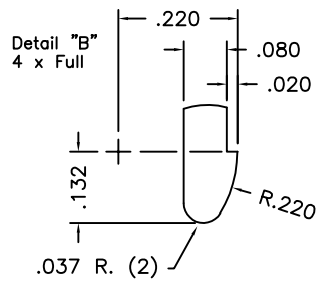
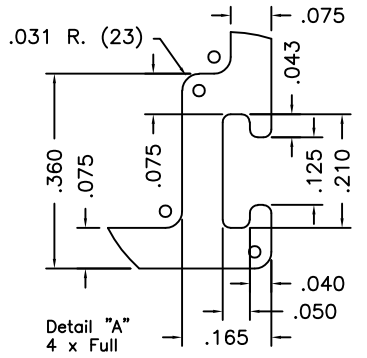
| |
|-------------------|
| MATERIAL: 6063-T5 |
| FINISH: Painted |
| AREA: .081 |
| WEIGHT: .097 |
| PERIMETER: 2.597 |

MIWD MI WINDOWS AND DOORS
650 WEST MARKET STREET GRATZ, PA 17030-0370

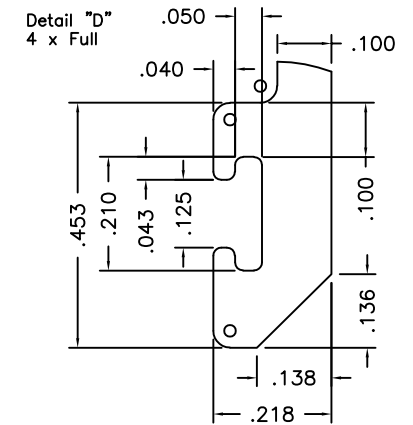
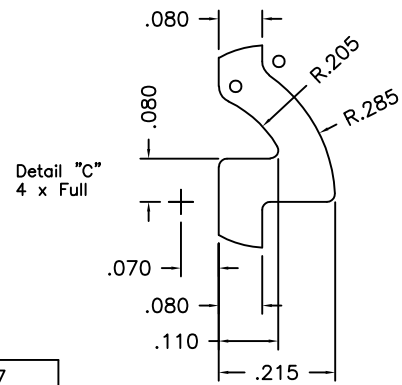
The information, design or data shown on this document or electronic media is the exclusive property of MI Windows and Doors, LLC. It is considered confidential and proprietary and is made available for limited use only. Its use or reproduction without the expressed written consent of MI Windows and Doors, LLC., is prohibited.

| | |
|---|---------------------------|
| DESCRIPTION: Frame Head/Jamb Filler Aluminum Extrusion | |
| PRODUCT: 120/130/140 Families | DATE: 06/05/15 |
| SCALE: 4 : 1 | PART NUMBER: M-2512 |
| DFTM: T.C. | DRAWING NUMBER: AE-000041 |

| | | | | |
|-----|---------|---------------------------------------|----------|------|
| - | 069B-15 | Initial release for extrusion tooling | 07/08/15 | T.C. |
| LTR | ECN # | REVISIONS | DATE | BY |



| Description | Length | Finish | 8-Digit Part # |
|---------------|--------|-----------|----------------|
| Panel Adapter | 192" | White | M251800C |
| Panel Adapter | 192" | Driftwood | M251800D |
| Panel Adapter | 192" | Bronze | M251800B |

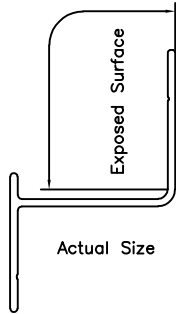


| | |
|----------------------|------------------------|
| CLASS: Hollow | PAIN PERIMETER: 16.237 |
| THERMAL CAVITY: None | CIRCLE SIZE: 5.000 |

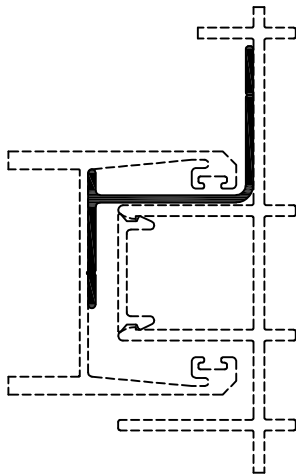
| | |
|-------------------|---|
| MATERIAL: 6005-T5 | MIWD MI WINDOWS AND DOORS 650 WEST MARKET STREET GRATZ, PA 17030-0370 The information, design or data shown on this document or electronic media is the exclusive property of MI Windows and Doors, LLC. It is considered confidential and proprietary and is made available for limited use only. Its use or reproduction without the expressed written consent of MI Windows and Doors, LLC., is prohibited. |
| FINISH: Painted | |
| AREA: 1.372 | |
| WEIGHT: 1.647 | |
| PERIMETER: 31.741 | UNSPECIFIED WALL: .075 BREAK ALL CORNERS R.015, UNLESS OTHERWISE SPECIFIED |

| | |
|--|---------------------------|
| DESCRIPTION: OXXO 4-Panel Adapter Aluminum Extrusion | |
| PRODUCT: 120 Family | DATE: 06/05/15 |
| SCALE: 1 : 1 | PART NUMBER: M-2518 |
| DFTM: T.C. | DRAWING NUMBER: AE-000047 |

| LTR | ECN # | REVISIONS | DATE | BY | T.C. |
|-----|---------|---------------------------------------|----------|------|------|
| - | 069A-15 | Initial Release For Extrusion Tooling | 06/29/15 | T.C. | |



| Description | Length | Finish | 8-Digit Part # |
|----------------|--------|-----------|----------------|
| Panel Retainer | 144" | White | M251900C |
| Panel Retainer | 144" | Driftwood | M251900D |
| Panel Retainer | 144" | Bronze | M251900B |

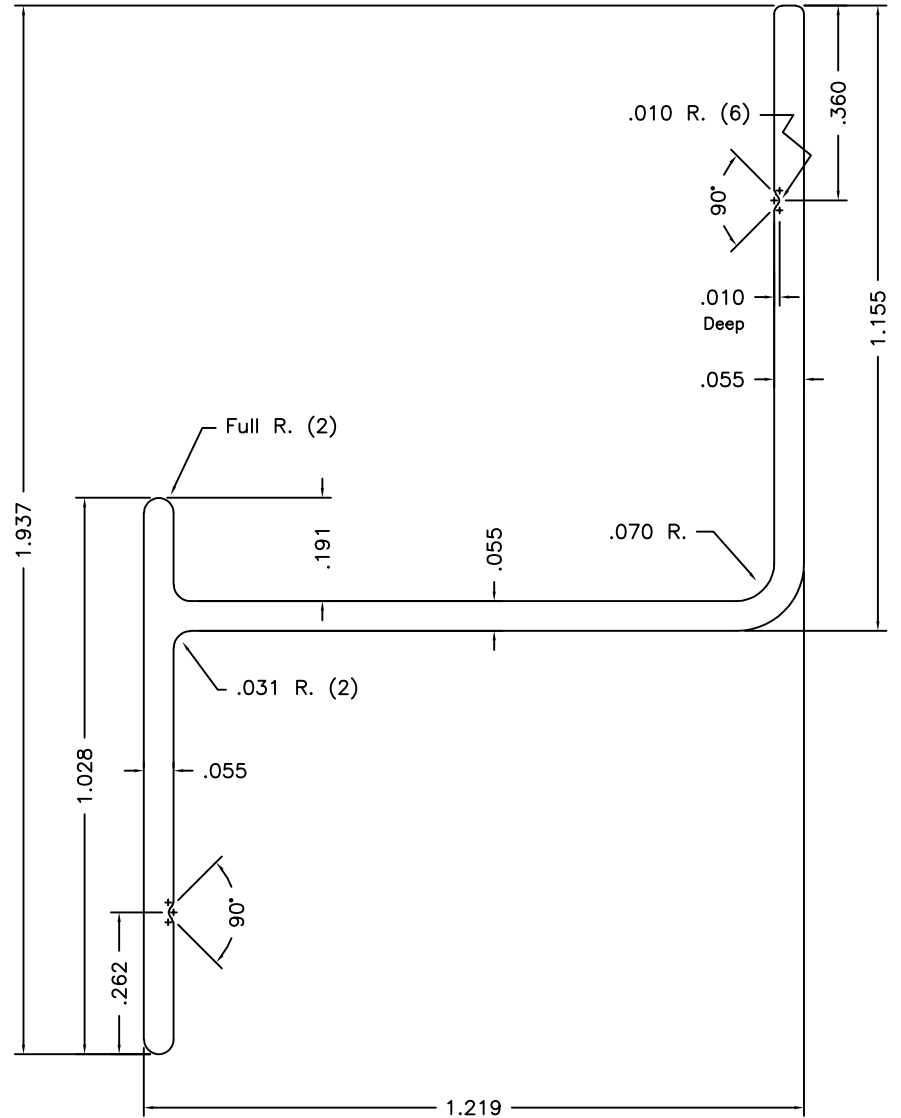


Molimo™
Architectural Product Testing

Report #: 1435.02-106-12

Date: 3/16/2018

By: M. Stremmel



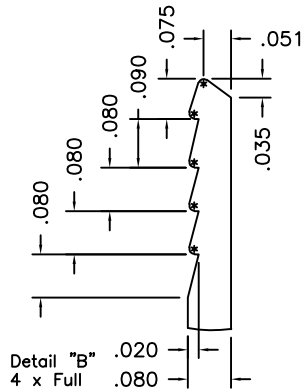
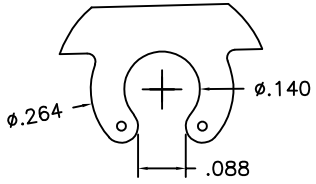
| | |
|----------------------|-----------------------|
| CLASS: Solid | PAIN PERIMETER: 1.094 |
| THERMAL CAVITY: None | CIRCLE SIZE: 2.500 |

| | |
|-------------------|---|
| MATERIAL: 6063-T5 | MIWD MI WINDOWS AND DOORS 650 WEST MARKET STREET GRATZ, PA 17030-0370 The information, design or data shown on this document or electronic media is the exclusive property of MI Windows and Doors, LLC. It is considered confidential and proprietary and is made available for limited use only. Its use or reproduction without the expressed written consent of MI Windows and Doors, LLC., is prohibited. |
| FINISH: Painted | |
| AREA: .178 | |
| WEIGHT: .214 | |
| PERIMETER: 6.537 | UNSPECIFIED WALL: .055 BREAK ALL CORNERS R.015, UNLESS OTHERWISE SPECIFIED |

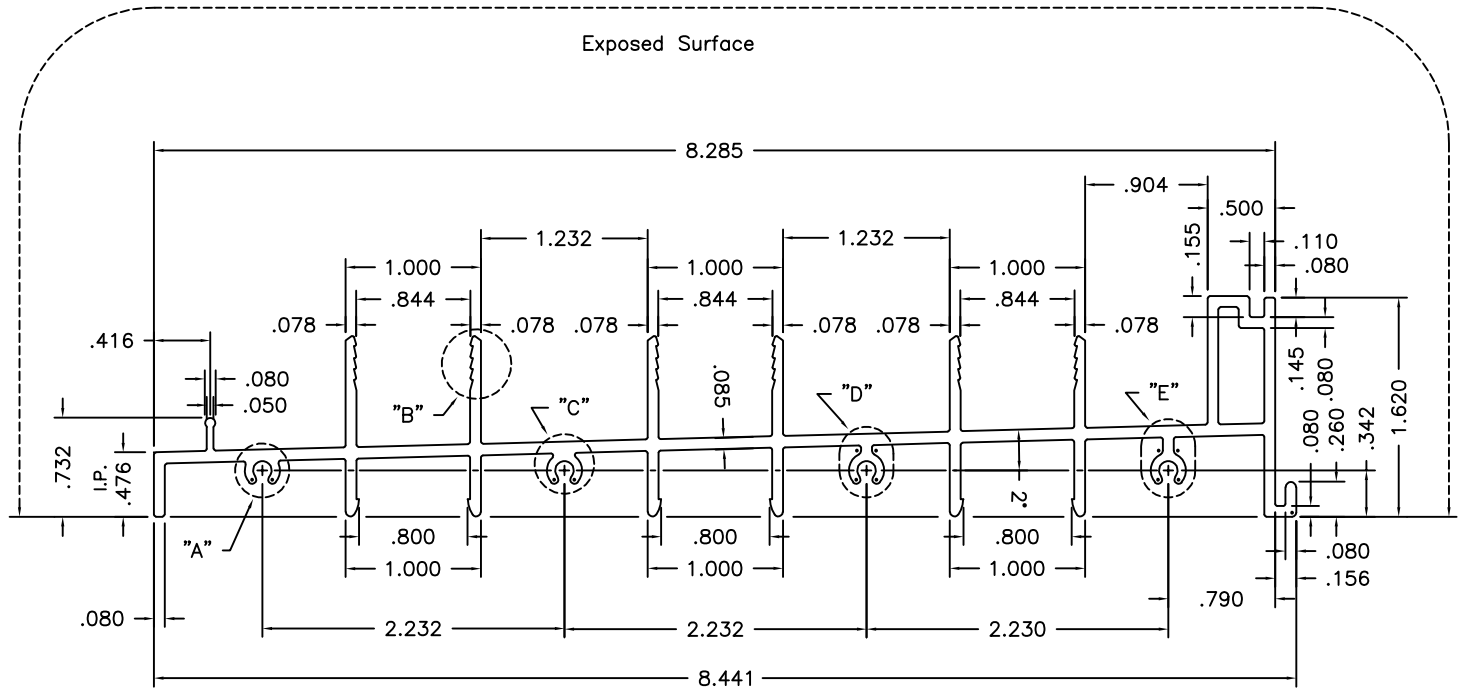
| | | | |
|--|---------------------------|---------------|----------------|
| DESCRIPTION: Fixed Panel Stile Retainer Aluminum Extrusion | | PRODUCT: XXXX | DATE: 06/05/15 |
| SCALE: 4 : 1 | PART NUMBER: M-2519 | | |
| DFTM: T.C. | DRAWING NUMBER: AE-000048 | | |

| LTR | ECN # | REVISIONS | DATE | BY | T.C. |
|-----|---------|---------------------------------------|----------|------|------|
| - | 069B-15 | Initial Release For Extrusion Tooling | 07/09/15 | T.C. | |

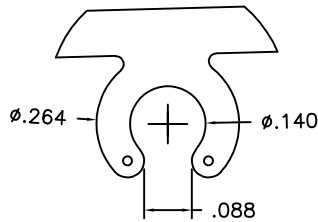
Detail "A"
4 x Full



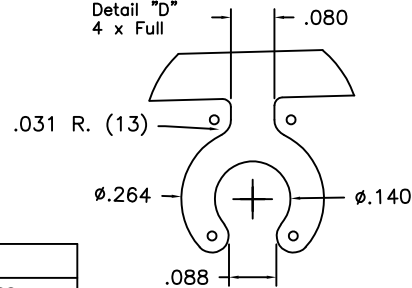
Detail "B"
4 x Full



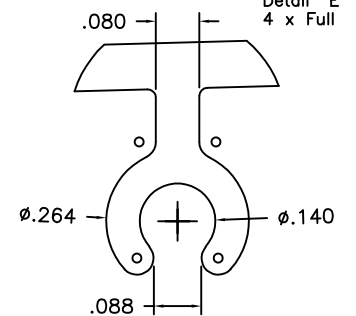
Detail "C"
4 x Full



Detail "D"
4 x Full



Detail "E"
4 x Full



| Description | Length | Finish | 8-Digit Part # |
|-------------|--------|--------|----------------|
| Frame Sill | 180" | Mill | M2522000 |

Molimo
Architectural Product Testing

Report #: 1435.02-106-12

Date: 3/16/2018

By: M. Stremmel

| | |
|----------------------|--------------------|
| CLASS: Hollow | PAINT PERIMETER: |
| THERMAL CAVITY: None | CIRCLE SIZE: 8.500 |

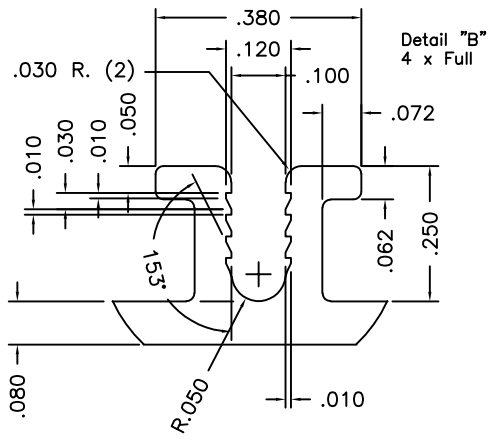
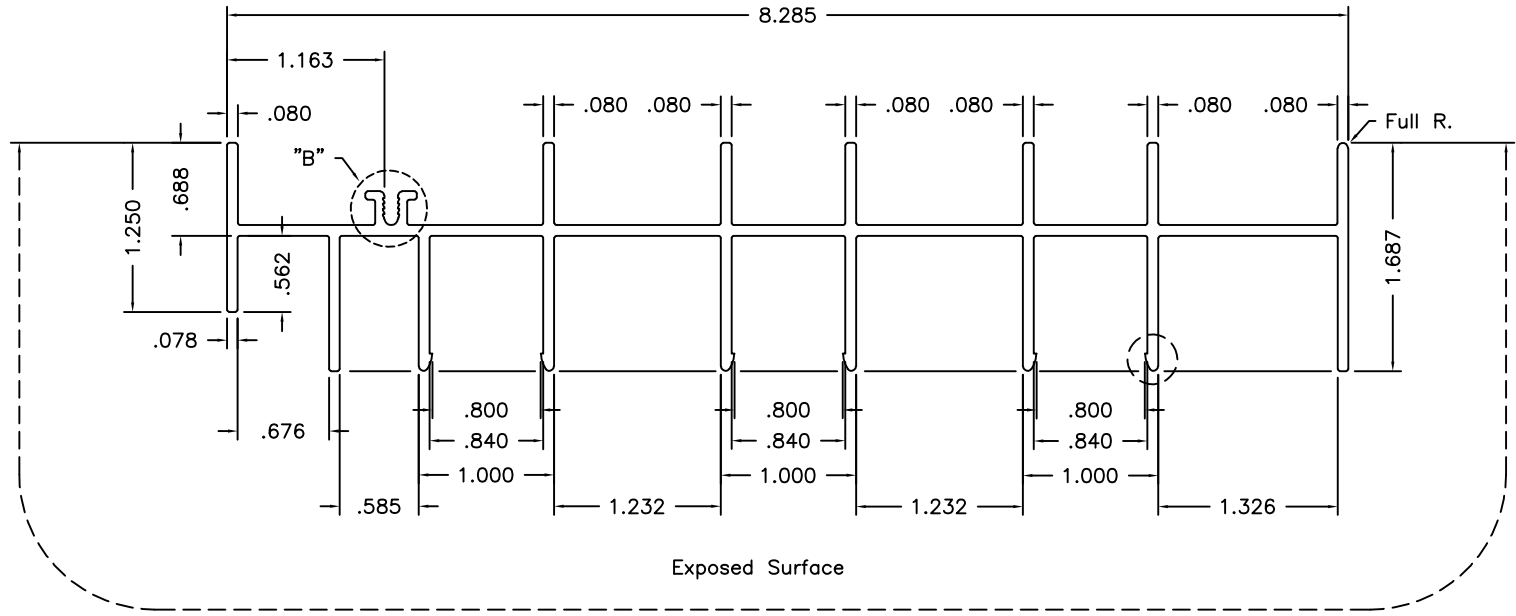
| |
|---|
| MATERIAL: 6005-T5 |
| FINISH: Mill |
| UNSPECIFIED WALL: .080 |
| AREA: 1.721 |
| WEIGHT: 2.065 |
| PERIMETER: 42.875 |
| BREAK ALL CORNERS R.015, UNLESS OTHERWISE SPECIFIED |

MIWD MI WINDOWS AND DOORS
650 WEST MARKET STREET GRATZ, PA 17030-0370

The information, design or data shown on this document or electronic media is the exclusive property of MI Windows and Doors, LLC. It is considered confidential and proprietary and is made available for limited use only. Its use or reproduction without the expressed written consent of MI Windows and Doors, LLC., is prohibited.

| | |
|---|---------------------------|
| DESCRIPTION: Frame Sill, 3-Track Aluminum Extrusion | DATE: 06/08/15 |
| PRODUCT: 130/130P Families | PART NUMBER: M-2522 |
| SCALE: 1 : 1 | DRAWING NUMBER: AE-000051 |
| DFTM: T.C. | |

| LTR | ECN # | REVISIONS | DATE | BY | T.C. |
|-----|---------|---------------------------------------|----------|----|------|
| - | 113A-16 | Initial release for extrusion tooling | 08/08/16 | | |



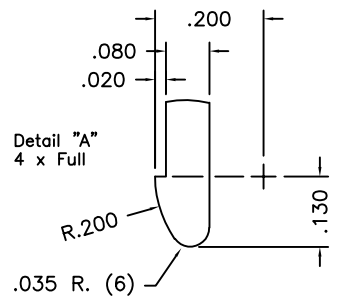
| Description | Length | Finish | 8-Digit Part # |
|-------------|--------|-----------|----------------|
| Frame Jamb | 180" | White | M252300C |
| Frame Jamb | 180" | Driftwood | M252300D |
| Frame Jamb | 180" | Bronze | M252300B |

Molimo[™]
Architectural Product Testing

Report #: 1435.02-106-12

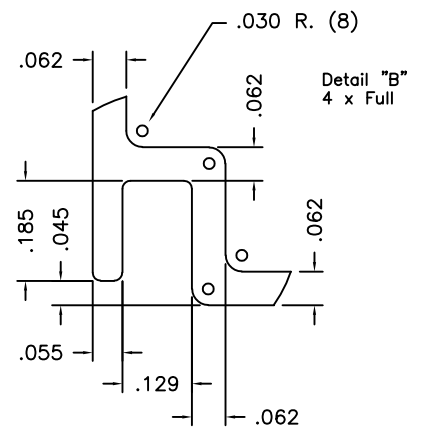
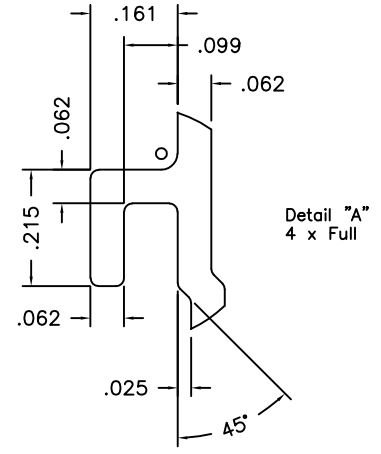
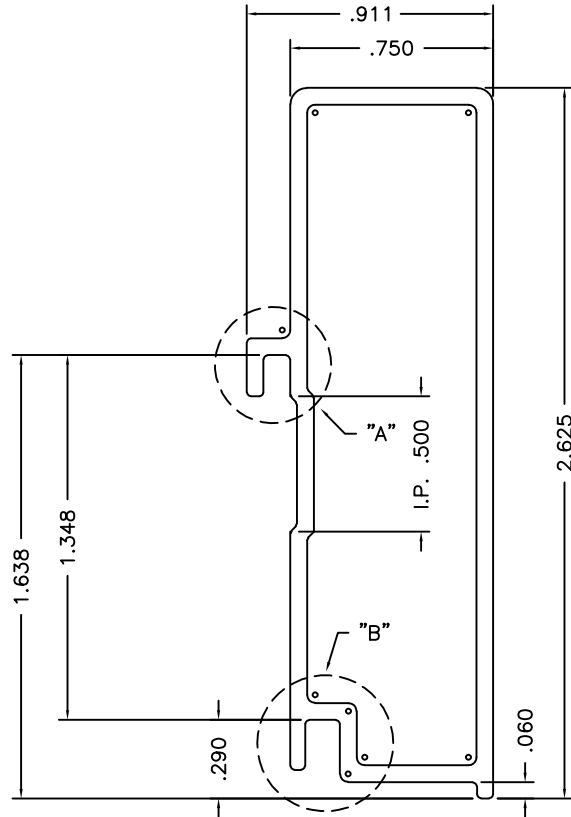
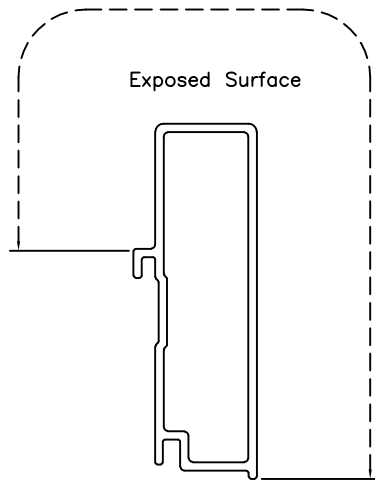
Date: 3/16/2018

By: M. Stremmel



| | |
|----------------------|-------------------------|
| CLASS: Solid | PAINT PERIMETER: 26.583 |
| THERMAL CAVITY: None | CIRCLE SIZE: 8.500 |

| | | | | | | | | | |
|-----|---------|---------------------------------------|----------|-------------------|--|---|--|---|--|
| | | | | MATERIAL: 6005-T5 | | MIWD MI WINDOWS AND DOORS 650 WEST MARKET STREET GRATZ, PA 17030-0370 | | DESCRIPTION: Frame Jamb, 3-Track, Finless Aluminum Extrusion | |
| | | | | FINISH: Painted | | UNSPECIFIED WALL: .080 | | PRODUCT: 130/130P Families | |
| | | | | AREA: 1.726 | | BREAK ALL CORNERS R.015, UNLESS OTHERWISE SPECIFIED | | DATE: 06/08/15 | |
| | | | | WEIGHT: 2.072 | | PERIMETER: 43.205 | | SCALE: 1 : 1 | |
| | | | | PERIMETER: 43.205 | | | | PART NUMBER: M-2523 | |
| | | | | | | | | DFTM: T.C. | |
| | | | | | | | | DRAWING NUMBER: AE-000052 | |
| - | 113A-16 | Initial release for extrusion tooling | 08/08/16 | T.C. | | | | | |
| LTR | ECN # | REVISIONS | DATE | BY | | | | | |



| Description | Length | Finish | 8-Digit Part # |
|---------------|--------|--------|----------------|
| Sill Extender | 196" | Mill | M2530000 |

MolimoTM
Architectural Product Testing

Report #: 1435.02-106-12

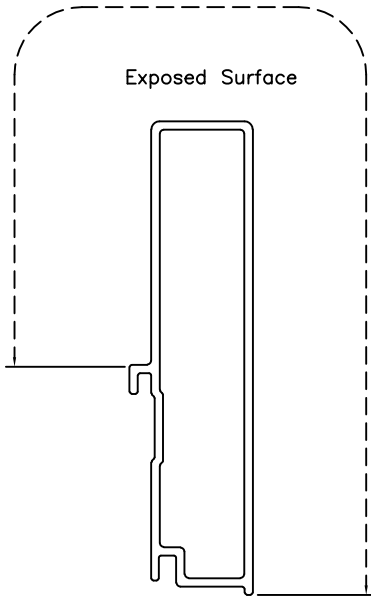
Date: 3/16/2018

By: M. Stremmel

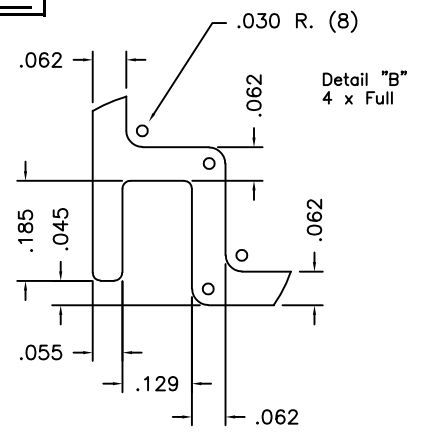
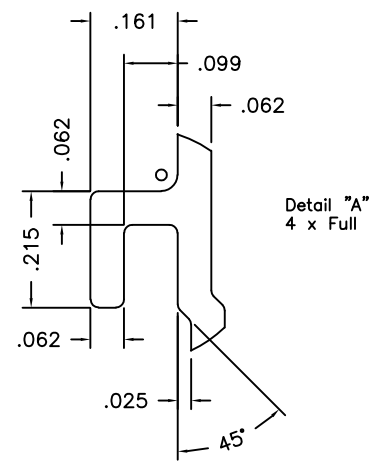
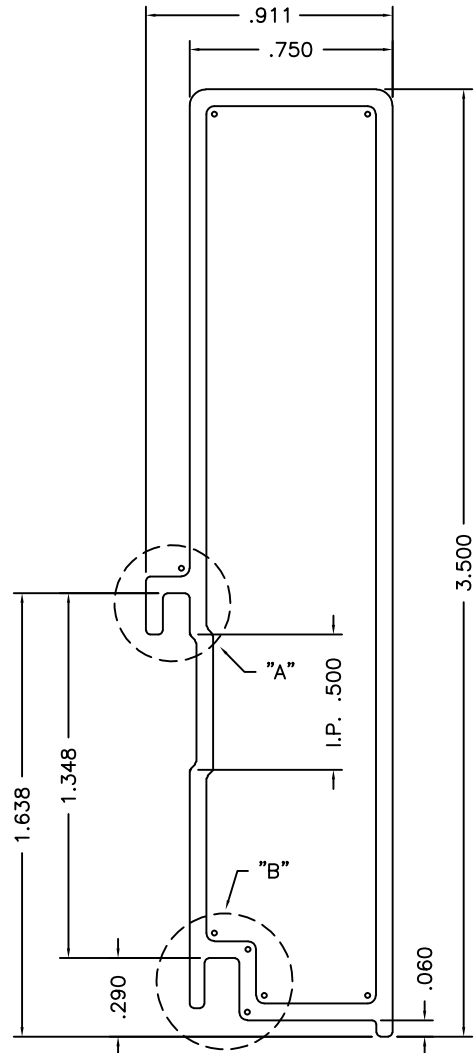
| | |
|----------------------|-----------------------|
| CLASS: Hollow | PAINT PERIMETER: None |
| THERMAL CAVITY: None | CIRCLE SIZE: 2.750 |

| | | | | | | | | | | | |
|-----------|--|---------------------------------------|--|-------------------|--|--|--|--|--|-------------------------------|--|
| | | | | MATERIAL: 6063-T5 | | <small>650 WEST MARKET STREET GRATZ, PA 17030-0370</small> | | DESCRIPTION: Frame Sill Extender, 2.625 Aluminum Extrusion | | | |
| | | | | FINISH: Mill | | | | UNSPECIFIED WALL: .062 | | PRODUCT: 120/130/140 Families | |
| | | | | AREA: .429 | | | | WEIGHT: .515 | | DATE: 06/09/15 | |
| | | | | PERIMETER: 13.687 | | | | BREAK ALL CORNERS R.015, UNLESS OTHERWISE SPECIFIED | | SCALE: 2 : 1 | |
| - 069B-15 | | Initial release for extrusion tooling | | 07/09/15 T.C. | | | | PART NUMBER: M-2530 | | | |
| LTR | | ECN # | | REVISIONS | | DATE BY | | DRAWING NUMBER: AE-000059 | | | |

The information, design or data shown on this document or electronic media is the exclusive property of MI Windows and Doors, LLC. It is considered confidential and proprietary and is made available for limited use only. Its use or reproduction without the expressed written consent of MI Windows and Doors, LLC., is prohibited.



| Description | Length | Finish | 8-Digit Part # |
|---------------|--------|--------|----------------|
| Sill Extender | 196" | Mill | M2531000 |



Molimo
Architectural Product Testing

Report #: 1435.02-106-12

Date: 3/16/2018

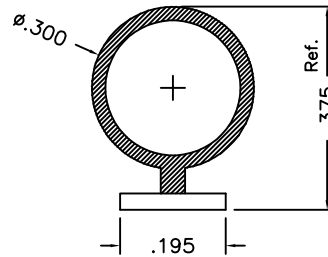
By: M. Stremmel

| | |
|----------------------|-----------------------|
| CLASS: Hollow | PAINT PERIMETER: None |
| THERMAL CAVITY: None | CIRCLE SIZE: 3.625 |

| | | | | | | | | | |
|-----|--|-------------------|--|---|--|--|--|---------------------------|--|
| | | MATERIAL: 6063-T5 | | 650 WEST MARKET STREET GRATZ, PA 17030-0370 The information, design or data shown on this document or electronic media is the exclusive property of MI Windows and Doors, LLC. It is considered confidential and proprietary and is made available for limited use only. Its use or reproduction without the expressed written consent of MI Windows and Doors, LLC., is prohibited. | | DESCRIPTION: Frame Sill Extender, 3.500 Aluminum Extrusion | | | |
| | | FINISH: Mill | | | | PRODUCT: 120/130/140 Families | | DATE: 06/09/15 | |
| | | AREA: .530 | | | | SCALE: 2 : 1 | | PART NUMBER: M-2531 | |
| | | WEIGHT: .636 | | | | DFTM: T.C. | | DRAWING NUMBER: AE-000060 | |
| - | | 069B-15 | | Initial release for extrusion tooling | | 07/09/15 | | T.C. | |
| LTR | | ECN # | | REVISIONS | | DATE | | BY | |
| | | PERIMETER: 16.939 | | BREAK ALL CORNERS R.015, UNLESS OTHERWISE SPECIFIED | | | | | |





Actual Size

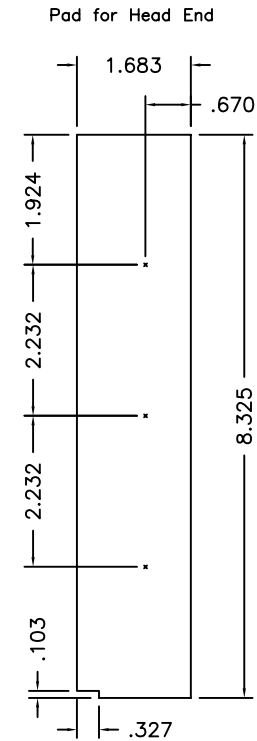
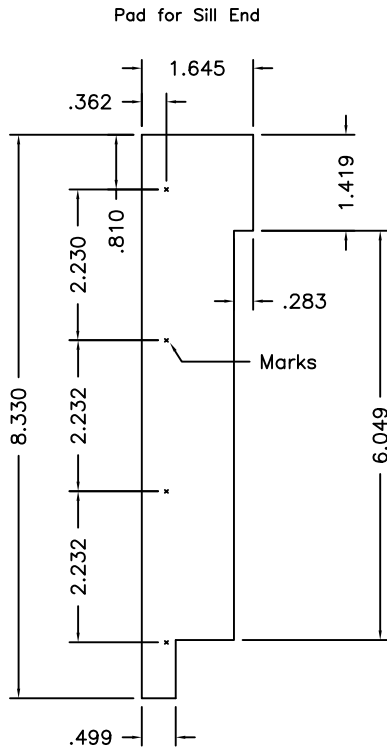


Vendor: Amesbury Truth

Note: All dimensions taken from sample part.

| | | |
|---|--|----------------|
|  | Molimo TM Architectural Product Testing | |
| | Report #: | 1435.02-106-12 |
| | Date: | 3/16/2018 |
| | By: | M. Stremmel |

| | | | | | | | | | |
|-----|-------|--|-----------|------|------------|---|---|--|----------------|
| | | | | | MATERIAL: |  MI MI WINDOWS AND DOORS, LLC. 650 WEST MARKET STREET GRATZ, PA 17030-0370 | DESCRIPTION: Bulb Seal Panel Interlock | | |
| | | | | | FINISH: | | UNSPECIFIED WALL: | PRODUCT: 120/120P/130/130P/140/140P | DATE: 08/16/16 |
| | | | | | AREA: | | BREAK ALL CORNERS R.015, UNLESS OTHERWISE SPECIFIED | The information, design or data shown on this document or electronic media is the exclusive property of MI Windows and Doors, LLC. It is considered confidential and proprietary and is made available for limited use only. Its use or reproduction without the expressed written consent of MI Windows and Doors, LLC., is prohibited. | |
| | | | | | WEIGHT: | | | | |
| | | | | | PERIMETER: | | | | |
| LTR | ECN # | | REVISIONS | DATE | BY | | DFTM: T.C. | DRAWING NUMBER: HW-000057 | |



Material:

$\frac{1}{32}$ " thick foam with $\frac{1}{16}$ " Butyl

Colors:

LH & RH White foam with gray butyl MS50050C
 LH & RH Black foam with black butyl MS50050L



Molimo[™]
 Architectural Product Testing

Report #: 1435.02-106-12

Date: 3/16/2018


By: M. Stremmel

Material:

$\frac{1}{32}$ " thick foam with $\frac{1}{16}$ " Butyl

Colors:

LH & RH White foam with gray butyl MS50051C
 LH & RH Black foam with black butyl MS50051L

| | | | | | | | | | |
|-----|-------|-----------------------------------|----------|------|---|--|-----------------------------------|---------------------------|--|
| | | | | | MATERIAL: Foam/Nutyl |  MIWD MI WINDOWS AND DOORS <small>650 WEST MARKET STREET GRATZ, PA 17030-0370</small> | DESCRIPTION: Frame Corner Gaskets | | |
| | | | | | FINISH: White/Black UNSPECIFIED WALL: | | Secon | | |
| | | | | | AREA: | | PRODUCT: 130/130P | DATE: 07/21/15 | |
| | | | | | WEIGHT: | | SCALE: Half | PART NUMBER: MS50050C,L | |
| A | None | Part numbers updated to show sets | 05/10/17 | T.C. | BREAK ALL CORNERS R.015, UNLESS OTHERWISE SPECIFIED | DFTM: T.C. | | DRAWING NUMBER: HW-000059 | |
| LTR | ECN # | REVISIONS | DATE | BY | PERIMETER: | The information, design or data shown on this document or electronic media is the exclusive property of MI Windows and Doors, LLC. It is considered confidential and proprietary and is made available for limited use only. Its use or reproduction without the expressed written consent of MI Windows and Doors, LLC., is prohibited. | | | |

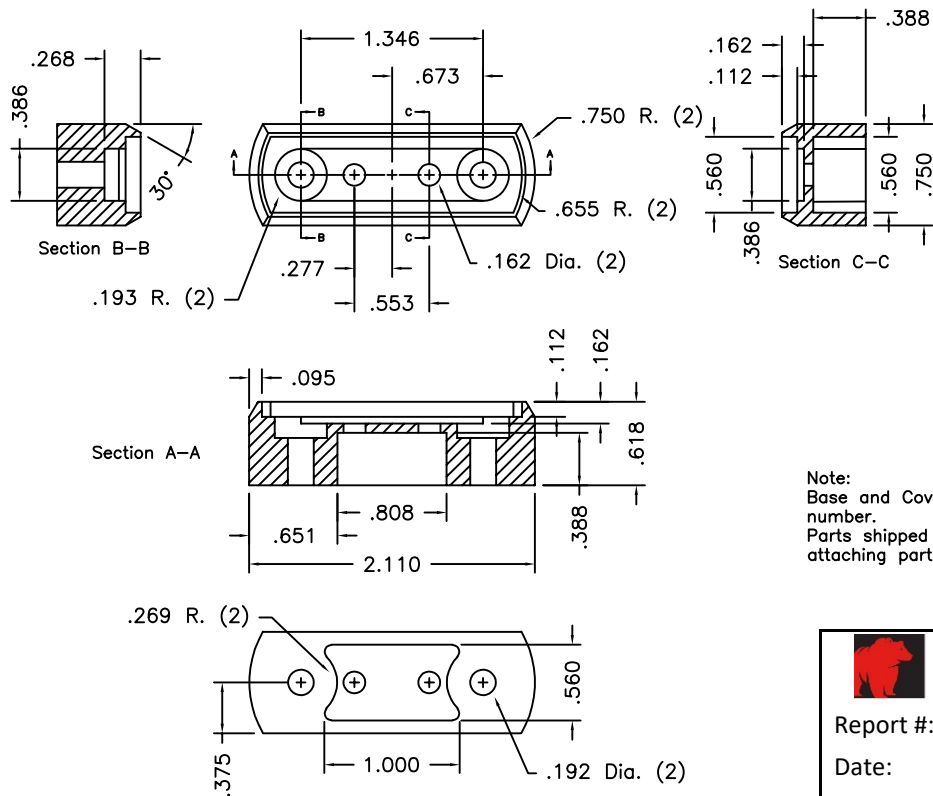
Supplier:
M&M Plastics
15800 NW 15th Ave.
Miami Fl. 33169

Rep:
Bill Walker
Sullivan & Associates

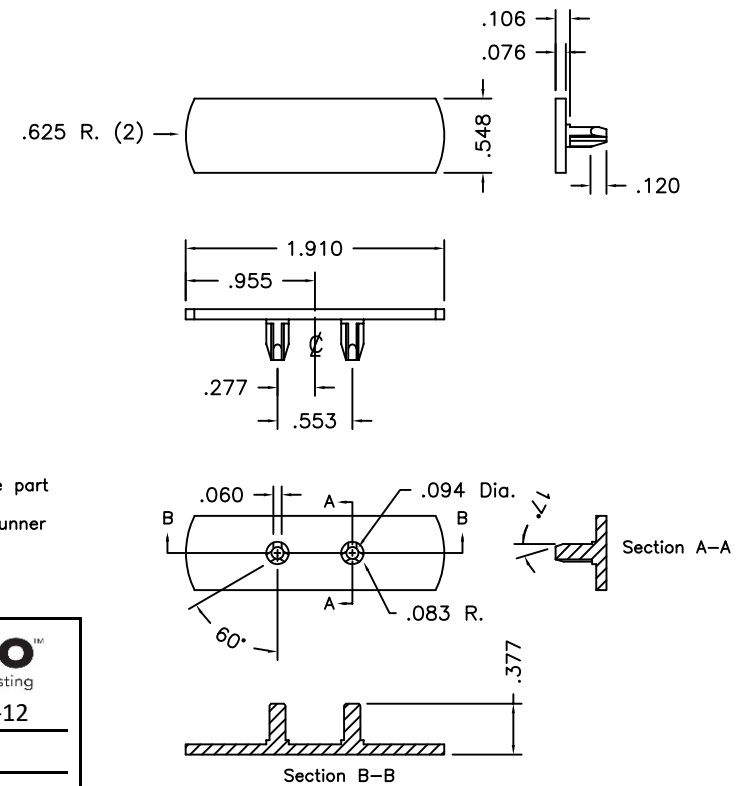
MI 8-Digit Part Numbers:

IM20800C, White
IM20800B, Bronze
IM20800D, Driftwood

Base




Cover



Note:
Base and Cover supplied under one part number.
Parts shipped together with mold runner attaching parts together.

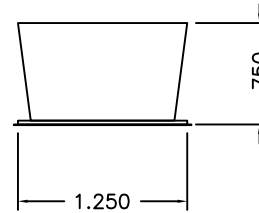
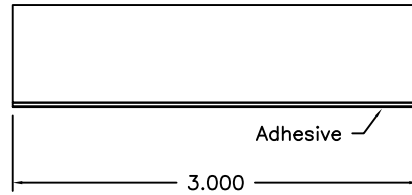
Molimo[™]
Architectural Product Testing


Report #: 1435.02-106-12
Date: 3/16/2018
By: M. Stremmel


| | | | | | | | | |
|-----|-------|-----------|------|----|---|---|---|-----------------------------|
| | | | | | MATERIAL: Nylon |  MI MI WINDOWS AND DOORS, LLC. 650 WEST MARKET STREET GRATZ, PA 17030-0370 | DESCRIPTION: Bump Stop Base and Cover Injection Molded | |
| | | | | | FINISH: Wh, Bz, Dw UNSPECIFIED WALL: | | PRODUCT: 120/120P/130/130P/140/140P | DATE: 04/05/17 |
| | | | | | AREA: | | SCALE: 1 : 1 | PART NUMBER: IM20800C, B, D |
| | | | | | WEIGHT: | | DFTM: T.C. | DRAWING NUMBER: HW-000068 |
| | | | | | PERIMETER: | | | |
| LTR | ECN # | REVISIONS | DATE | BY | BREAK ALL CORNERS R.015, UNLESS OTHERWISE SPECIFIED | <small>The information, design or data shown on this document or electronic media is the exclusive property of MI Windows and Doors, LLC. It is considered confidential and proprietary and is made available for limited use only. Its use or reproduction without the expressed written consent of MI Windows and Doors, LLC., is prohibited.</small> | | |

MI 8-Digit Part Number: WS40000G

Supplier: Amesbury
 Supplier Part Number: 751250GYAD3000

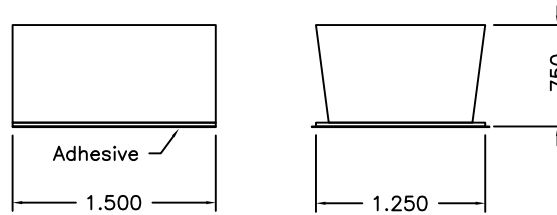



| | |
|--|----------------|
|  Molimo Architectural Product Testing | |
| Report #: | 1435.02-106-12 |
| Date: | 3/16/2018 |
| By: | M. Stremmel |


| | | | | | | | | | |
|-----|---------|-----------------|----------|------------------------|---|---|--|-------------------------------------|-----------------------|
| | | | | MATERIAL: Pile W'Strip | |  MI MI WINDOWS AND DOORS, LLC. 650 WEST MARKET STREET GRATZ, PA 17030-0370 | DESCRIPTION: Weatherstrip Plug, Adhesive Backing Used Under/Over Interlocks | | |
| | | | | FINISH: Grey | UNSPECIFIED WALL: | | The information, design or data shown on this document or electronic media is the exclusive property of MI Windows and Doors, LLC. It is considered confidential and proprietary and is made available for limited use only. Its use or reproduction without the expressed written consent of MI Windows and Doors, LLC., is prohibited. | PRODUCT: 12X, 13X, 14X SGD Families | DATE: 04/10/17 |
| | | | | AREA: | BREAK ALL CORNERS R.015, UNLESS OTHERWISE SPECIFIED | | | SCALE: 1 : 1 | PART NUMBER: WS40000G |
| | | | | WEIGHT: | | | | PERIMETER: | DFTM: T.C. |
| - | O41A-17 | Initial release | 04/10/17 | T.C. | | | | | |
| LTR | ECN # | REVISIONS | DATE | BY | | | | | |

MI 8-Digit Part Number: WS40001G

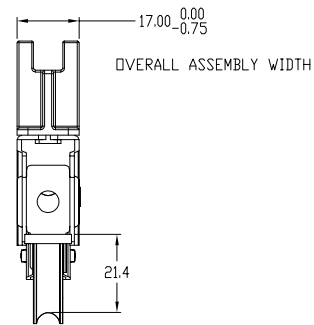
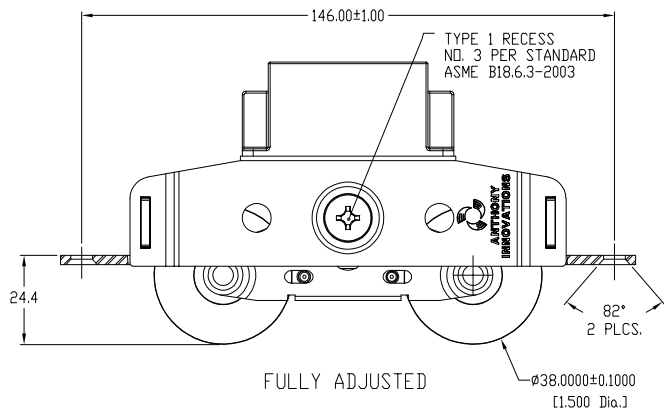
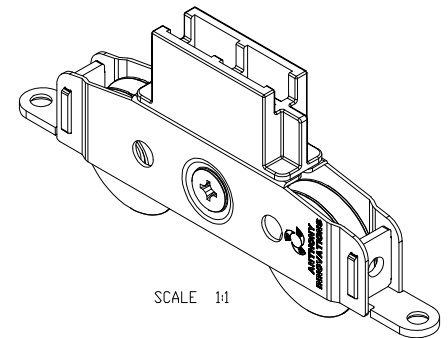
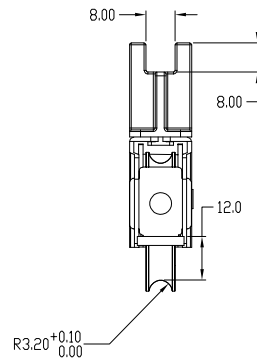
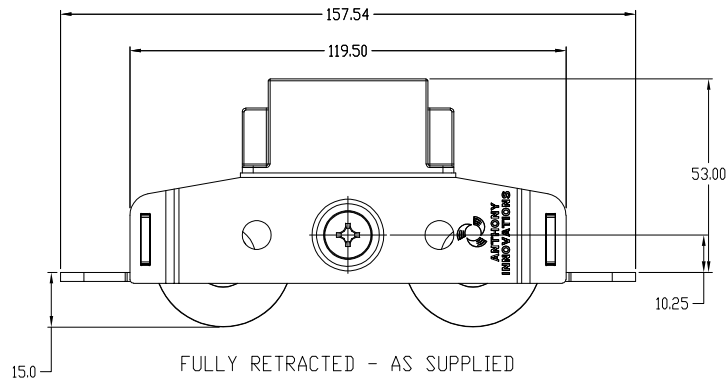
Supplier: Amesbury
 Supplier Part Number: 751250GYAD1500



| | |
|---|--|
|  | Molimo TM Architectural Product Testing |
| Report #: | 1435.02-106-12 |
| Date: | 3/16/2018 |
| By: | M. Stremmel |

| | | | | | | | | | |
|-----|---------|-----------------|----------|------|------------------------|---|---|-------------------------------------|-----------------------|
| | | | | | MATERIAL: Pile W'Strip |  MI MI WINDOWS AND DOORS, LLC. 650 WEST MARKET STREET GRATZ, PA 17030-0370 | DESCRIPTION: Weatherstrip Plug, Adhesive Backing Panel Top Bottom Rail Corners | | |
| | | | | | FINISH: Grey | | UNSPECIFIED WALL: | PRODUCT: 12X, 13X, 14X SGD Families | DATE: 04/10/17 |
| | | | | | AREA: | | BREAK ALL CORNERS R.015, UNLESS OTHERWISE SPECIFIED | SCALE: 1 : 1 | PART NUMBER: WS40001G |
| | | | | | WEIGHT: | | | PERIMETER: | DFTM: T.C. |
| - | O41A-17 | Initial release | 04/10/17 | T.C. | | | | | |
| LTR | ECN # | REVISIONS | DATE | BY | | | | | |

The information, design or data shown on this document or electronic media is the exclusive property of MI Windows and Doors, LLC. It is considered confidential and proprietary and is made available for limited use only. Its use or reproduction without the expressed written consent of MI Windows and Doors, LLC., is prohibited.



INNER AND OUTER CARRIAGE 1.2mm
END TAGS 2.2mm

ADJUSTMENT SCREW, BUSH
AND AXLES MADE FROM
303 STAINLESS STEEL.

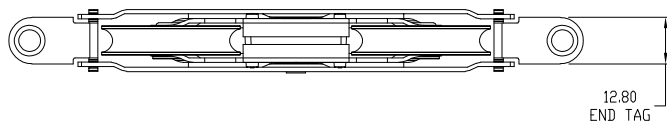
PRECISION BEARINGS

ISO 492:2002
NORMAL TOLERANCE CLASS

ALL PLASTIC PARTS
ACETAL

CUSTOMER SIGNATURE REQUIRED FOR PRODUCTION APPROVAL & ACCEPTANCE OF THE ANTHONY GROUP'S TERMS & CONDITIONS OF SALE (DESIGN CHANGES SUBSEQUENT TO THIS SIGNATURE MAY BE AT COST TO THE CUSTOMER)

SIGNED:.....DATE:.....



Molimo
Architectural Product Testing

Report #: 1435.02-106-12

Date: 3/16/2018

By: M. Stremmel

| PART NUMBER | CARRIAGE MATERIAL | BEARING MATERIAL | TYRE MATERIAL | LOAD RATING |
|-------------|-------------------|------------------|-----------------|---------------|
| S7143DNA | MILD STEEL | CHROME STEEL | ACETAL | 80kg (176lb) |
| S7143DPA | MILD STEEL | CHROME STEEL | ACETAL | 100kg (220lb) |
| S7143DGA | MILD STEEL | CHROME STEEL | MILD STEEL | 100kg (220lb) |
| SS7143DSNA | STAINLESS STEEL | STAINLESS STEEL | ACETAL | 80kg (176lb) |
| SS7143DSPA | STAINLESS STEEL | STAINLESS STEEL | ACETAL | 100kg (220lb) |
| SS7143DSGA | STAINLESS STEEL | STAINLESS STEEL | STAINLESS STEEL | 100kg (220lb) |

| DRAWN TO AS1100 | | DO NOT SCALE | | UNSPECIFIED TOLERANCES ± 0.25 | |
|--------------------------------|---------|--------------|-----|-------------------------------|--------------------------------------|
| DATE | ECR No. | DRN | CKD | AUTH | REVISION |
| 30NOV16 | - | RK | DJJ | DJJ | RELEASED FOR CUSTOMER APPROVAL |
| DESC. DUAL WHEEL ROLLER | | | | | REVISION |
| DRAWING No. 1082779 | | | | | CA1 |
| ASSEM No. REFER TABLE | | | | | |
| DRAWING NAME 1082779 REV. 1.1 | | | | | |
| 3D MODEL NAME 1082777 REV. 1.0 | | | | | A2 |
| DOC No. 18F | | | | | COPYRIGHT 2016 - ANTHONY INNOVATIONS |

MI Drawing # HW-000071
MI 8-Digit Part # HD300300
Anthony Innovations Part # SS7143DSPA

3RD ANGLE PROJECTION
DIMENSIONS IN MILLIMETRES

THIS DOCUMENT IS THE PROPERTY OF ANTHONY INNOVATIONS PTY. LTD.
IT IS STRICTLY CONFIDENTIAL AND SUBJECT TO RETURN UPON REQUEST.
IT MUST NOT BE TRACED, COPIED OR EXHIBITED WITHOUT WRITTEN PERMISSION.

| FINISH | SEE NOTES | | COLOR |
|--------|-----------|-------------|-----------------------|
| MATL | WEIGHT | MODIFIED BY | 30-Nov-16 04:00:00 PM |
| SCALE | 1:1 | CREATED BY | 30-Nov-16 02:00:00 PM |
| SHEET | 1 OF 1 | RELEASED BY | 30-Nov-16 04:00:00 PM |

88 KEEN PARADE
HOMASTOWN, 3074
MELBOURNE, AUSTRALIA

anthonyinnovations.com.au
TEL +61 039 9469 1166
FBN 7504522509