

# REG Report Snapshots, 2023

---

## Return to Work

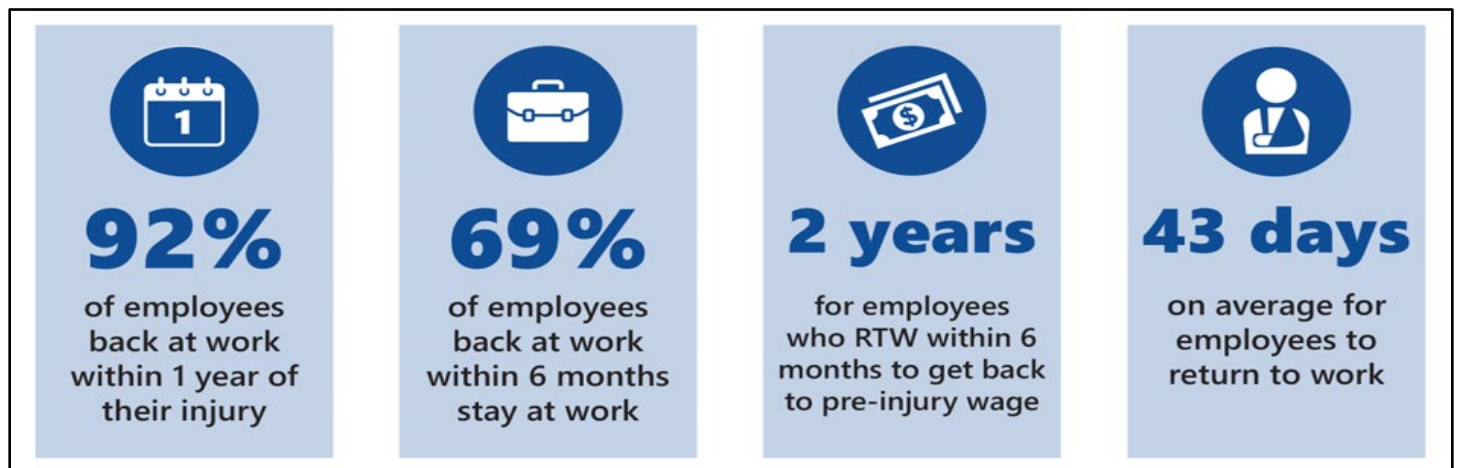
July 2023

### Summary

One goal of the Texas workers' compensation system is to return injured employees back to work quickly and safely. This report analyzes return-to-work (RTW) outcomes within the Texas workers' compensation system between 2007 and 2020, including the

- Initial RTW rate (percentage of injured employees who returned to work for the first time after their injury).
- Sustained RTW rate (percentage of injured employees who returned to work and stayed at work for nine months after their injury).
- Average days away from work after their injury.

### Key Findings



The findings show steady improvements in RTW rates for Texas injured employees in the last decade. More than three-fourths of employees injured in 2020 initially returned to work within six months, and almost nine out of 10 injured employees went back to work within the first year. Injured employees have an average of 43 days away from work and returned to pre-injury wage about two years later.

### About the report

This analysis focuses on the RTW outcomes of injured employees who received temporary income benefits (TIBs) for their lost time. RTW rates are calculated using quarterly employee wage information from the Texas Workforce Commission. Results show a minor dip in RTW rates, both initial and sustained, in 2019 then recovering in 2020. Lastly, the findings show enduring trends that older employees, employees with severe injuries, and employees working in industries that rely on manual labor tend to have more lost time than other employees.

# Pharmacy Cost and Utilization in the Texas Workers' Compensation System

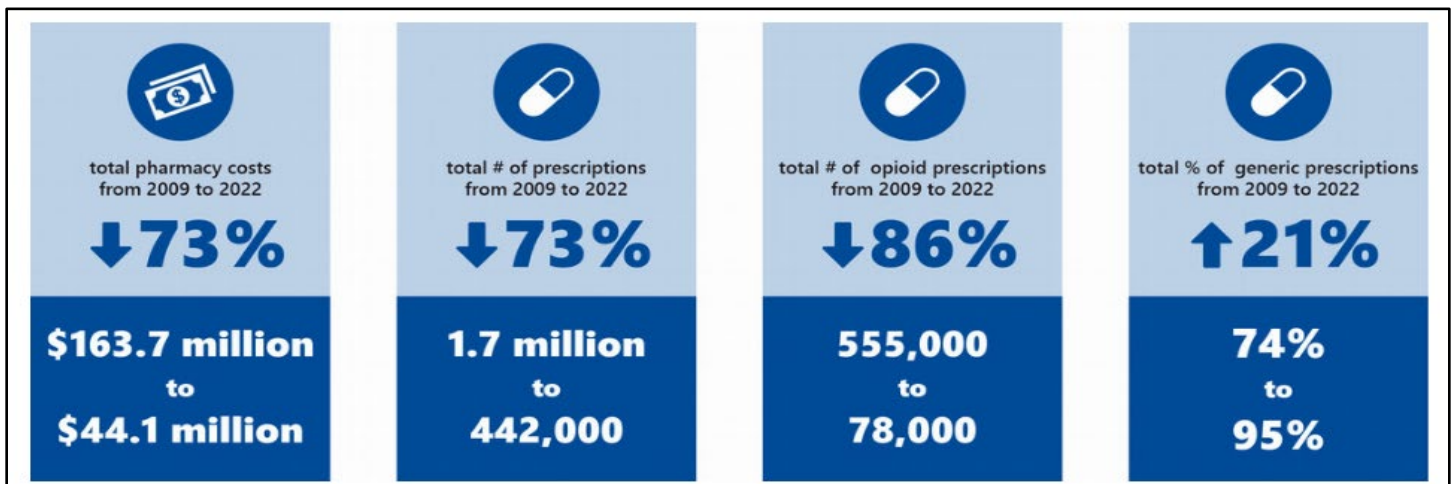
September 2023

## Summary

The claims in this report represent the claims that received pharmacy services before and after DWC adopted a pharmacy closed formulary in 2011. This report analyzes pharmacy utilization and cost in the Texas workers' compensation system between 2009 and 2022, including:

- Number of pharmacy claims and prescriptions.
- Prescription costs.
- Most frequently prescribed drugs before and after the formulary.
- Access to pharmacy services.

## Key Findings



Overall, the following trends were observed from 2009 to 2022:

- Pharmacy service costs decreased: 73% decrease in total pharmacy cost and 39% decrease in average cost per claim.
- Opioid prescription costs decreased: N-status drug costs decreased 97% and non-N-status drug costs decreased 88%.
- Pharmacy service utilization decreased: total pharmacy claims decreased 57%, total number of prescriptions decreased 73%, and average number of prescriptions per claim decreased 38%.
- The use of generic prescriptions, rather than branded drugs, increased from 74% to 95%.

## About the report

This report analyzes pharmacy costs and utilization in the Texas workers' compensation system using data before and after the formulary. DWC adopted a [pharmacy closed formulary](#) for injured employees in the Texas workers' compensation system in 2011. The formulary applies to both network and non-network claims and intends to apply evidence-based medicine guidelines to ensure quality medical treatment for injured employees while controlling costs and unnecessary utilization. The formulary includes all FDA-approved drugs but excludes drugs with an "N" status, experimental and investigational drugs, and drugs created by compounding.

# Health Care Cost and Utilization in the Texas Workers' Compensation System

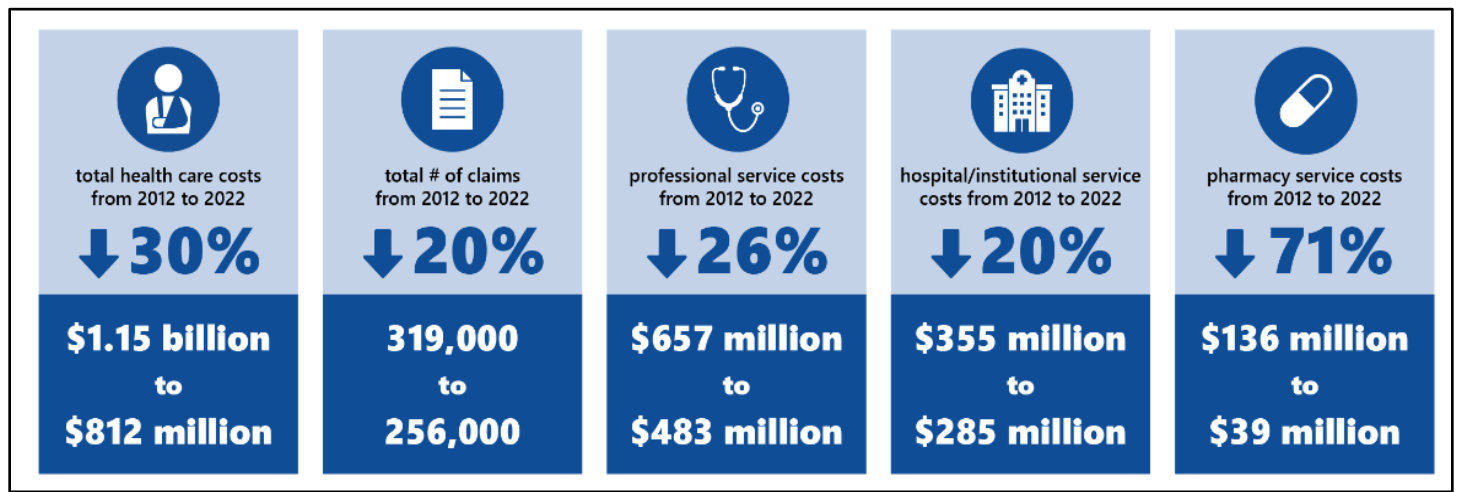
December 2023

## Summary

This report provides medical cost and utilization data, showing trends over time and patterns across claim types, health care provider types, service types, claim maturities, facility types, and drug types in the Texas workers' compensation system. This report analyzes cost and utilization of health care for the Texas workers' compensation system between 2012 and 2022.

Total health care costs declined 30%, from \$1.15 billion to \$812 million. The total number of claims decreased 20% from 319,000 to 256,000. The average cost per claim dropped 12%, from \$3,611 to \$3,169.

## Key Findings



The following trends occurred from 2012 to 2022:

- Professional services costs decreased 26%, from \$657 million to \$483 million. The number of claims decreased 19% from 301,000 to 244,000. The average cost declined 9% from \$2,181 per claim to \$1,982 in 2022.
- Hospital/institutional services costs decreased 20%, from \$355 million to \$285 million. The number of claims decreased 32%, from 90,000 to 62,000. The average cost increased about 17%, from \$3,932 per claim to \$4,601 in 2022.
- Total cost of pharmacy services decreased significantly by 71% from \$136 million to \$39 million. The number of claims dropped 54% from 150,000 to 69,000. The average cost of pharmacy services decreased 38% from \$908 to \$563 per claim.

## About the report

When an employee is injured on the job, they should be able to receive accessible, prompt, appropriate, and cost-effective health care within the Texas workers' compensation system. This report details what care was provided and used, the cost for these services overall, and the increases and decreases from 2012 to 2022, including

- Overall health care costs.
- Professional service cost and utilization.
- Hospital/institutional service cost and utilization.
- Dental service cost and utilization.
- Pharmacy service cost and utilization.

This information includes patterns and trends across claim types, health care provider types, service types, claim maturities, facility types, and drug types. The report includes all claims, lost-time claims, and medical-only claims, and shows the cost and utilization by service year and injury year. The number of claims, total cost, and average cost for services are also provided.