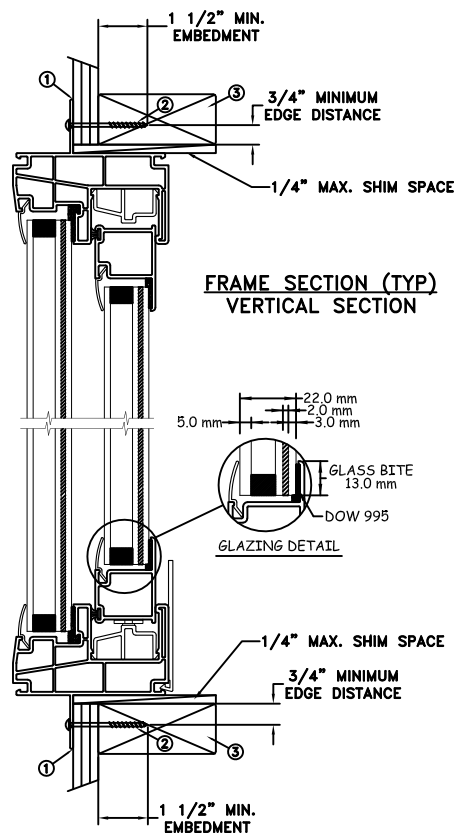
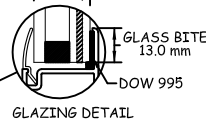


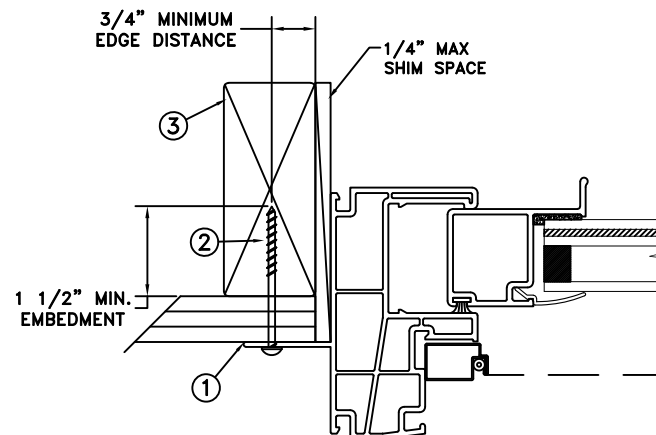
TYPICAL ELEVATION WITH FASTENER SPACING



FRAME SECTION (TYP)  
VERTICAL SECTION



GLAZING DETAIL



FRAME JAMB SECTION (TYP)  
HORIZONTAL SECTION

## NAILFIN/SCREW-WOOD INSTALLATION

MAXIMUM FRAME	DP	IMPACT
74" x 62"	+50/-50	YES

WINDZONE 4

### Installation Notes:

1. Seal flange/frame to substrate. Sill shall be set on a continuous serpentine bead of structural grade silicone caulk when no fastener is used to anchor the sill (typical).
2. Use #8 PH or greater fastener through the nailing flange with sufficient length to penetrate a minimum of 1 1/2" into the wood framing. For 2x wood frame substrate (min. S.G. = 0.42)
3. Host structure (wood buck, masonry, steel) to be designed and anchored to properly transfer all loads to the structure. The host structure is the responsibility of the architect or engineer of record for the project of installation.

### General Notes:

1. The product shown herein is designed, tested and manufactured to comply with the wind load criteria of the 2018 International Residential Code (IRC) and 2018 International Building Code (IBC).
2. All glazing shall conform to ASTM E1300.
3. At minimum, glazing shall be 5.0mm annealed - 9.0mm airspace - 3.0mm annealed glass / 2mm PVB by Kuraray / 3mm annealed glass.
4. Use structural or composite shims where required.

This schedule addresses only the fasteners required to anchor the unit to achieve the rated design pressure and impact performance (where applicable) up to the size limitations noted. It is not intended as a guide to the installation process and does not address the sealing consideration that may arise in different wall conditions. For the complete installation procedure, see the instructions packaged with the unit or go to [www.jeld-wen.com](http://www.jeld-wen.com).

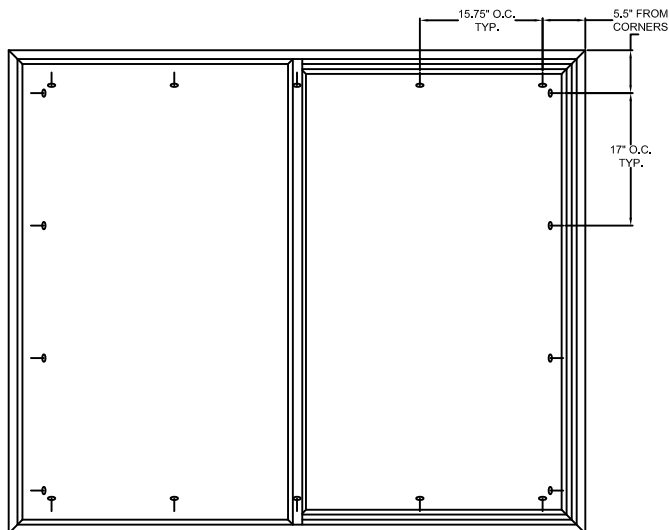
### DISCLAIMER:

This drawing and its contents are confidential and are not to be reproduced or copied in whole or in part or used or disclosed to others except as authorized by JELD-WEN Inc.

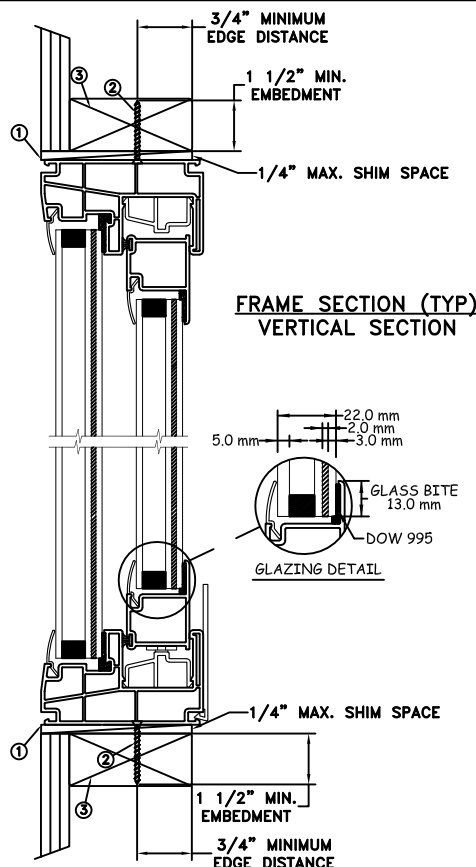


2021.10.20 14:38:46 -04'00'  
**JOSEPH A. REED, P.E.**  
Texas No. 100777  
5 Leigh Drive  
York, PA. 17408  
(717) 848-1200

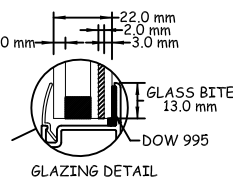
	DATE: 10/12/2021	 3737 LAKEPORT BLVD. KLAMATH FALLS OR, 97601 PHONE: (800) 535-3936			
DRAWN BY: M.HAM	SCALE: NTS				
CHECKED BY: J.HAWKINS	TITLE:  Premium Atlantic Vinyl Horizontal Slider - XO				
APPROVED BY: J.GOOSSEN					
RECORD No.: D009346					
REPORT No.: NCTL-210-3894-1A		CAD DWG. No.: —	REV: A	SHEET 1 of 4	



TYPICAL ELEVATION WITH FASTENER SPACING

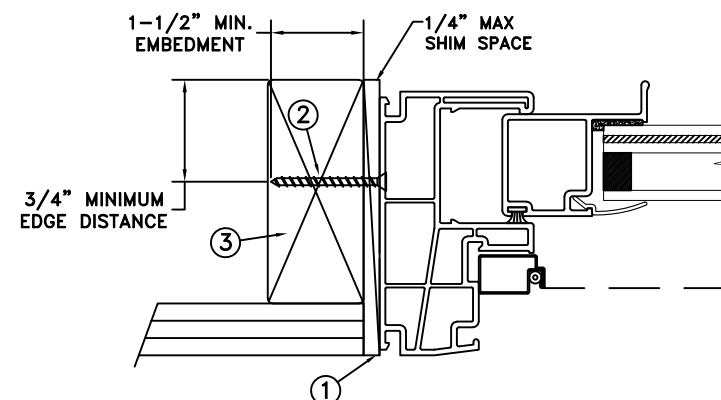


FRAME SECTION (TYP)  
VERTICAL SECTION



GLAZING DETAIL

## THROUGH FRAME/SCREW WOOD INSTALLATION



FRAME JAMB SECTION (TYP)  
HORIZONTAL SECTION

MAXIMUM FRAME	DP	IMPACT
74" x 62"	+50/-50	YES

WINDZONE 4

### Installation Notes:

1. Seal flange/frame to substrate. Sill shall be set on a continuous serpentine bead of structural grade silicone caulk when no fasteners are used to anchor the sill (typical).
2. Use #8 PH or greater fastener through the head & side jambs with sufficient length to penetrate a minimum of 1 1/2" into the wood framing. For 2x wood frame substrate (min. S.G. = 0.42)
3. Host structure (wood buck, masonry, steel) to be designed and anchored to properly transfer all loads to the structure. The host structure is the responsibility of the architect or engineer of record for the project of installation.

### General Notes:

1. The product shown herein is designed, tested and manufactured to comply with the wind load criteria of the 2018 International Residential Code (IRC) and 2018 International Building Code (IBC).
2. All glazing shall conform to ASTM E1300.
3. At minimum, glazing shall be 5.0mm annealed - 9.0mm airspace - 3.0mm annealed glass / 2mm PVB by Kuraray / 3mm annealed glass.
4. Use structural or composite shims where required.

This schedule addresses only the fasteners required to anchor the unit to achieve the rated design pressure and impact performance (where applicable) up to the size limitations noted. It is not intended as a guide to the installation process and does not address the sealing consideration that may arise in different wall conditions. For the complete installation procedure, see the instructions packaged with the unit or go to [www.jeld-wen.com](http://www.jeld-wen.com).

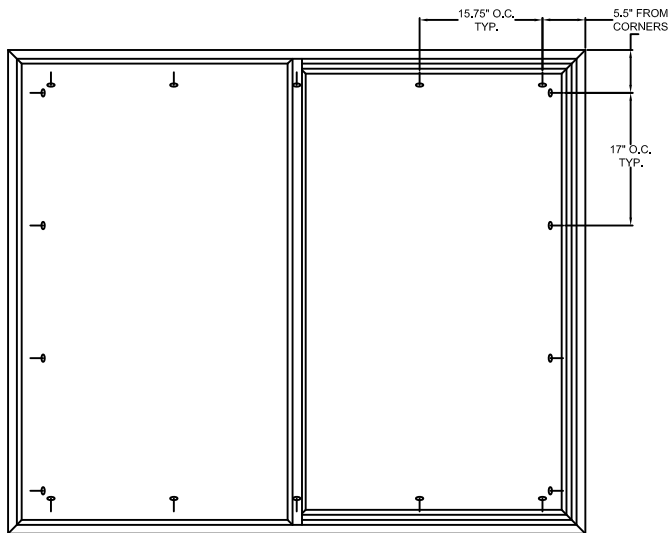
### DISCLAIMER:

This drawing and its contents are confidential and are not to be reproduced or copied in whole or in part or used or disclosed to others except as authorized by JELD-WEN Inc.

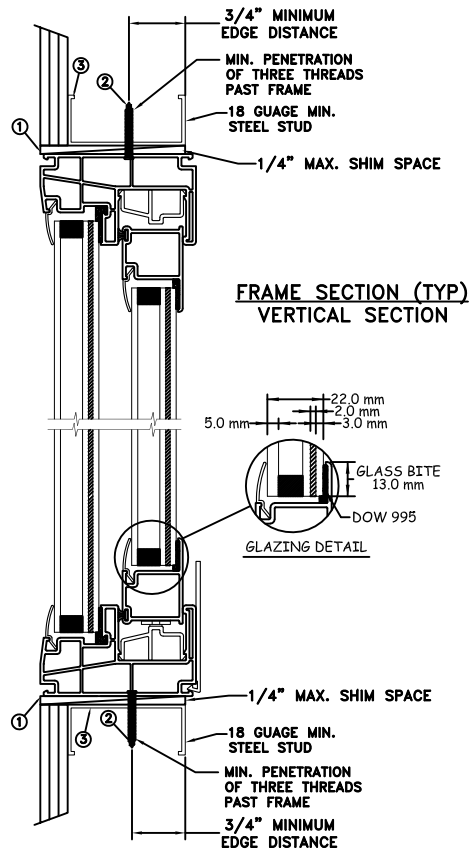


JOSEPH A. REED, P.E.  
Texas No. 100777  
5 Leigh Drive  
York, PA. 17406  
(717) 846-1200

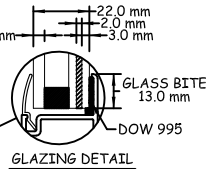
	DATE: 10/12/2021	<div>JELD-WEN</div> <div>3737 LAKEPORT BLVD KLAMATH FALLS OR, 97601 PHONE: (800) 535-3936</div>	
DRAWN BY: M.HAM	SCALE: NTS		
CHECKED BY: J.HAWKINS	TITLE:  Premium Atlantic Vinyl Horizontal Slider - XO		
APPROVED BY: J.GOOSSEN			
RECORD No.: D009346			
REPORT No.: NCTL-210-3894-1A	CAD DWG. No.: —	REV: A	SHEET 2 of 4



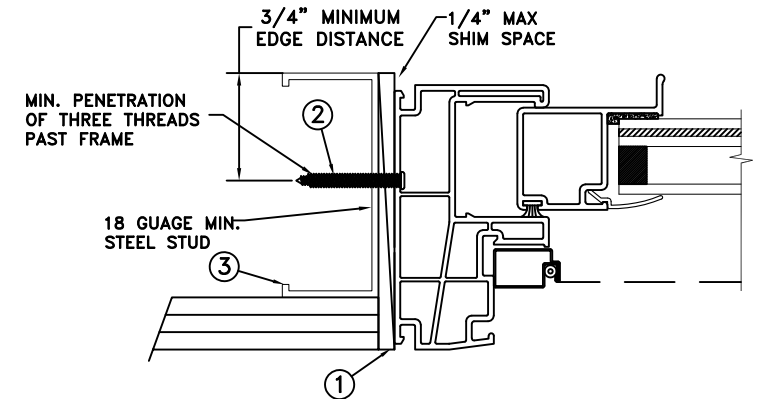
TYPICAL ELEVATION WITH FASTENER SPACING



FRAME SECTION (TYP)  
VERTICAL SECTION



GLAZING DETAIL



FRAME JAMB SECTION (TYP)  
HORIZONTAL SECTION

MAXIMUM FRAME	DP	IMPACT
74" x 62"	+50/-50	YES

WINDZONE 4

#### Installation Notes:

1. Seal flange/frame to substrate. Sill shall be set on a continuous serpentine bead of structural grade silicone caulk when no fastener is used to anchor the sill (typical).
2. For anchoring through head and side jambs into metal framing use #10 TEK Self-Tapping screws with sufficient length to achieve a minimum penetration of three threads past the frame thickness. Steel substrate min. 18ga.,  $f_y = 33$  ksi.
3. Host structure (wood buck, masonry, steel) to be designed and anchored to properly transfer all loads to the structure. The host structure is the responsibility of the architect or engineer of record for the project of installation.

#### General Notes:

1. The product shown herein is designed, tested and manufactured to comply with the wind load criteria of the 2018 International Residential Code (IRC) and 2018 International Building Code (IBC).
2. All glazing shall conform to ASTM E1300.
3. At minimum, glazing shall be 5.0mm annealed - 9.0mm airspace - 3.0mm annealed glass / 2mm PVB by Kuraray / 3mm annealed glass.
4. Use structural or composite shims where required.

This schedule addresses only the fasteners required to anchor the unit to achieve the rated design pressure and impact performance (where applicable) up to the size limitations noted. It is not intended as a guide to the installation process and does not address the sealing consideration that may arise in different wall conditions. For the complete installation procedure, see the instructions packaged with the unit or go to [www.jeld-wen.com](http://www.jeld-wen.com).

#### DISCLAIMER:

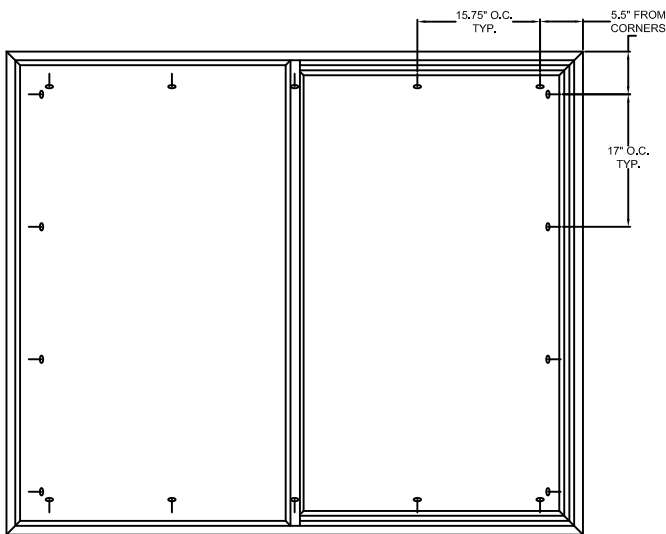
This drawing and its contents are confidential and are not to be reproduced or copied in whole or in part or used or disclosed to others except as authorized by JELD-WEN Inc.



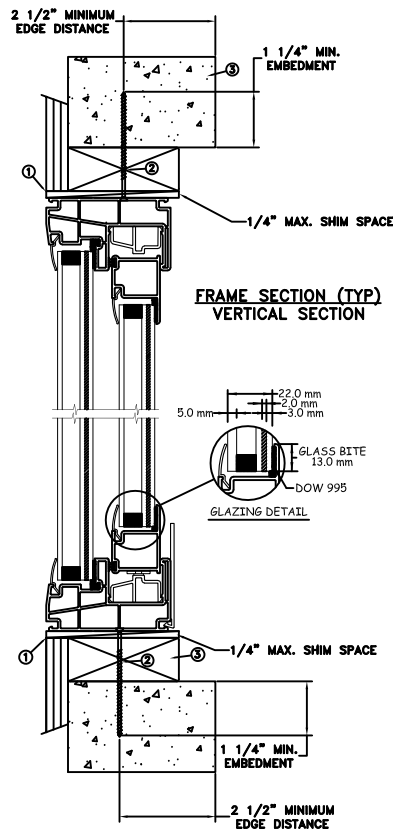
2021.10.20 14:38:46 -04'00'

**JOSEPH A. REED, P.E.**  
Texas No. 100777  
5 Leigh Drive  
York, PA. 17408  
(717) 846-1200

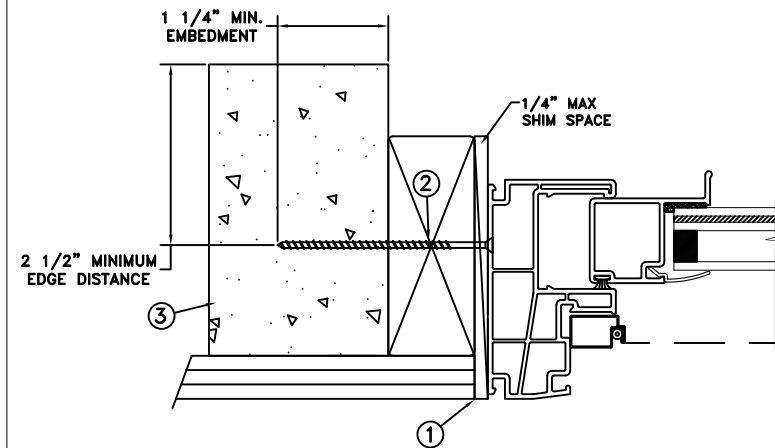
	DATE: 10/12/2021	<b>JELD-WEN</b> 3737 LAKEPORT BLVD. KLAMATH FALLS OR, 97601 PHONE: (800) 535-3936	
DRAWN BY: M.HAM	SCALE: NTS		
CHECKED BY: J.HAWKINS	TITLE:		
APPROVED BY: J.GOOSEN			
RECORD No.: D009346	Premium Atlantic Vinyl Horizontal Slider - XO		
REPORT No.: NCTL-210-3894-1A			
CAD DWG. No.: —	REV: A	SHEET 3 of 4	



TYPICAL ELEVATION WITH FASTENER SPACING



FRAME SECTION (TYP)  
VERTICAL SECTION



FRAME JAMB SECTION (TYP)  
HORIZONTAL SECTION

MAXIMUM FRAME	DP	IMPACT
74" x 62"	+50/-50	YES

WINDZONE 4

#### Installation Notes:

1. Seal flange/frame to substrate. Sill shall be set on a continuous serpentine bead of structural grade silicone caulk when no fastener is used to anchor the sill (typical).
2. Use 3/16" Tapcon or equivalent fasteners through the head and side jambs with sufficient length to penetrate a minimum of 1 1/4" into concrete or masonry at each location with a 2 1/2" min. from edge distance. For concrete (min. fc = 3000 psi) or masonry substrate (CMU shall be ASTM C90).
3. Host structure (wood buck, masonry, steel) to be designed and anchored to properly transfer all loads to the structure. The host structure is the responsibility of the architect or engineer of record for the project of installation.

#### General Notes:

1. The product shown herein is designed, tested and manufactured to comply with the wind load criteria of the 2018 International Residential Code (IRC) and 2018 International Building Code (IBC).
2. All glazing shall conform to ASTM E1300.
3. At minimum, glazing shall be 5.0mm annealed - 9.0mm airspace - 3.0mm annealed glass / 2mm PVB by Kuraray / 3mm annealed glass.
4. Use structural or composite shims where required.

This schedule addresses only the fasteners required to anchor the unit to achieve the rated design pressure and impact performance (where applicable) up to the size limitations noted. It is not intended as a guide to the installation process and does not address the sealing consideration that may arise in different wall conditions. For the complete installation procedure, see the instructions packaged with the unit or go to [www.jeld-wen.com](http://www.jeld-wen.com).

#### DISCLAIMER:

This drawing and its contents are confidential and are not to be reproduced or copied in whole or in part or used or disclosed to others except as authorized by JELD-WEN Inc.



*Joseph A. Reed*

2021.10.20 14:38:46 -04'00'

**JOSEPH A. REED, P.E.**  
Texas No. 100777  
5 Leigh Drive  
York, PA. 17408  
(717) 846-1200

	DATE: 10/12/2021	<b>JELD-WEN</b> 3737 LAKEPORT BLVD. KLAMATH FALLS OR, 97601 PHONE: (800) 535-3936	
DRAWN BY: M.HAM	SCALE: NTS		
CHECKED BY: J.HAWKINS	TITLE:		
APPROVED BY: J.GOOSEN			
RECORD No.: D009346	Premium Atlantic Vinyl Horizontal Slider - XO		
REPORT No.: NCTL-210-3894-1A			
CAD DWG. No.: —	REV: A	SHEET 4 of 4	