

NOTES:

1. GLAZING OPTION - .125" MINIMUM ANNEALED DSB GLAZING IN MOLDED FRAMES SCREWED TOGETHER IN TOP SECTION ONLY (WITH OR WITHOUT DECORATIVE INSERTS) MEETS UNIFORM STATIC DESIGN PRESSURES SHOWN ON THIS DRAWING. FOR THE VERTICAL RAISED PANEL GLAZING SHALL HAVE A DAYLIGHT OPENING OF 9.25" X 16" AND A MINIMUM OF (8) #8x1" SCREWS (2X ALONG THE HORIZONTAL AND 2X ALONG THE VERTICAL) AND FOR THE HORIZONTAL RAISED PANEL GLAZING SHALL HAVE A DAYLIGHT OPENING OF 21.5" X 6.25" AND A MINIMUM OF (8) #8x1" SCREWS (3X ALONG THE HORIZONTAL AND 1X ALONG THE VERTICAL). REFER TO DETAIL J ON SH

3. GLAZING IS NOT IMPACT RESISTANT AND DOES NOT MEET THE REQUIREMENTS FOR WIND-BORNE DEBRIS REGION.

2. VINYL OR WOOD DOOR STOP-MOLDING NAILED WITH 6D COMMON NAILS ON 6" MAXIMUM SPACING MUST OVERLAP TOP AND BOTH ENDS OF PANELS MINIMUM 7/16".

3. SLIDE LOCKS (2) REQUIRED.

4. SECTION SHALL BE CONSTRUCTED WITH FOAMED IN PLACE POLYURETHANE FOAM INSULATION CHEMICALLY BONDED TO A MINIMUM .070" FIBERGLASS FACER AND 27 GA STEEL BACKER.

5. THE DESIGN OF THE SUPPORTING STRUCTURAL ELEMENTS SHALL BE THE RESPONSIBILITY OF THE PROFESSIONAL OF RECORD FOR THE BUILDING OR STRUCTURE AND IN ACCORDANCE WITH CURRENT BUILDING CODES FOR THE LOADS LISTED ON THIS DRAWING.

6. DOOR JAMB TO BE MINIMUM 2x4 SOUTHERN PINE LUMBER. REFER TO JAMB CONNECTION SUPPLEMENT FOR ATTACHMENT TO SUPPORTING STRUCTURE.

7. SECTION SHALL HAVE A 5" 25 GA STEEL BACKUP PLATE ACROSS THE TOP OF EACH SECTION.

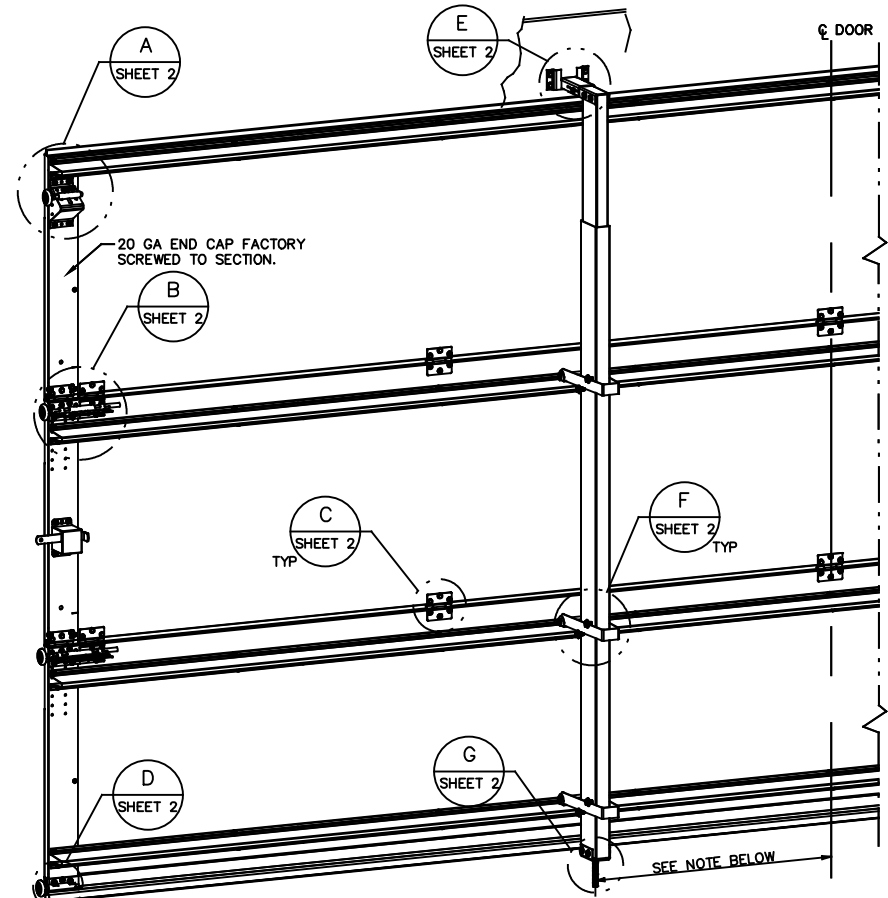
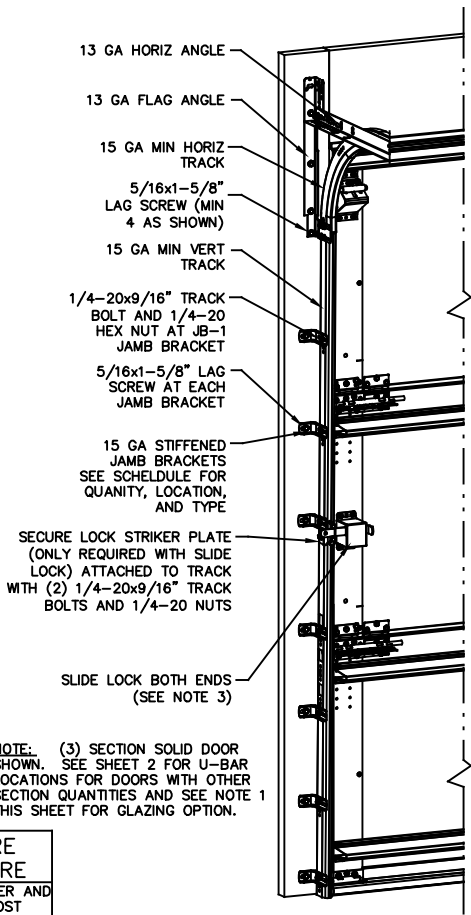
8. FOR LOW HEAD ROOM LIFT CONDITIONS, TOP BRACKET SHALL BE A 13 GA LHR 7/4 TOP BRACKET WITH A MINIMUM OF (3) 1/4-14x7/8" SELF DRILLING CRIMPITE SCREWS IN LIEU OF THE BRACKET SHOWN ON THIS DRAWING. U-BAR ON TOP SECTION SHALL BE INSTALLED ON TOP OF LHR TOP BRACKETS.

NOTE: (3) SECTION SOLID DOOR SHOWN. SEE SHEET 2 FOR U-BAR LOCATIONS FOR DOORS WITH OTHER SECTION QUANTITIES AND SEE NOTE 1 THIS SHEET FOR GLAZING OPTION.

| SUPERIMPOSED DESIGN PRESSURE LOADS ON SUPPORTING STRUCTURE | | | |
|--|-----------------|------------------------------|---|
| MAX DOOR WIDTH | MAX DOOR HEIGHT | UNIFORM LOAD EACH JAMB (PLF) | POINT LOAD AT HEADER AND SLAB AT EACH POST LOCATION (LBS) |
| 10'-0" | 7'-0" | +172.0/-191.5 | +788.3/-877.7 |
| | 8'-0" | +172.0/-191.5 | +895.8/-997.4 |
| 12'-0" | 7'-0" | +206.4/-229.8 | +674.1/-750.5 |
| | 8'-0" | +206.4/-229.8 | +766.0/-852.8 |
| 14'-0" | 7'-0" | +240.8/-268.1 | +678.3/-755.3 |
| | 8'-0" | +240.8/-268.1 | +770.8/-858.3 |
| 15'-0" | 7'-0" | +258.0/-287.3 | +708.4/-788.8 |
| | 8'-0" | +258.0/-287.3 | +805.1/-896.3 |
| 16'-0" | 7'-0" | +275.2/-306.4 | +740.0/-823.9 |
| | 8'-0" | +275.2/-306.4 | +840.9/-936.2 |

JOHN E. SCATES, PE
2560 King Arthur #124-54
Lewisville, TX 75066
FL PE 51737 TX PE 56308/F2203

PROFESSIONAL ENGINEER'S SEAL PROVIDED ONLY FOR VERIFICATION OF WINDLOAD CONSTRUCTION DETAILS.



NOTE: POST SYSTEM FOR THE 16' (ALL EXCEPT SONOMA), 15' (ALL FACER STYLES), AND 14' (ALL FACER STYLES) WIDE DOOR 2 POST SYSTEMS, EACH INSTALLED 32"±1" DISTANCE FROM THE CENTERLINE OF THE DOOR. POST SYSTEM FOR THE 16' (SONOMA FACER) WIDE DOOR REQUIRES 3 POSTS, ONE LOCATED AT THE CENTERLINE OF THE DOOR AND EACH ADDITIONAL LOCATED AT 48"±1" DISTANCE FROM THE CENTERLINE OF THE DOOR. POST SYSTEM FOR THE 12' (ALL FACER EXCEPT SONOMA) WIDE DOOR IS TO BE INSTALLED 36"±1" DISTANCE FROM THE CENTERLINE OF THE DOOR. POST SYSTEM FOR THE 12' (SONOMA FACER) WIDE DOOR IS TO BE INSTALLED 24"±1" DISTANCE FROM THE CENTERLINE OF THE DOOR. A SINGLE POST SYSTEM IS TO BE INSTALLED ON THE CENTERLINE OF THE DOOR FOR 10' (ALL FACER STYLES) DOOR WIDTHS. SEE WINDLOAD POST INSTALLATION INSTRUCTIONS.

JAMB BRACKET SCHEDULE

| DOOR HEIGHT | NO. OF SECTIONS | NO. OF JAMB BRACKETS (EACH JAMB) | LOCATION OF CENTERLINE OF JAMB BRACKETS MEASURED FROM BOTTOM OF TRACK (ALL DIMENSIONS ± 2") |
|-------------|-----------------|----------------------------------|---|
| 7'-0" | 3 | 7 | 2" (JB-1), 10" (JB-1), 21-3/4" (JB-1), 29-3/4" (JB-1), 42" (JB-1), 52-1/2" (JB-1), 63-1/4" (JB-1) |
| 8'-0" | 4 | 8 | 2" (JB-1), 10" (JB-1), 21-3/4" (JB-1), 29-3/4" (JB-1), 39" (JB-1), 48" (JB-1), 57-1/2" (JB-1), 75-1/2" (JB-1) |

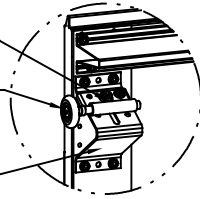
NOTE: (JB-1) FOLLOWING DIMENSION DENOTES SLOTTED JAMB BRACKET ATTACHED TO TRACK WITH 1/4-20x9/16" TRACK BOLT AND NUT.

NOTE: COMPLIES WITH IBC/IRC 2018.

| REVISIONS |
|--|
| PCR 32177 REV A ADDED ORACLE MODEL NUMBERS 10/28/19 |
| PCR 32442 REV B ADDED NYLON BALL BEARING ROLLER OPTION. JQ 9/17/20 |
| C UPDATED PER PCR32744. UPDATED REV LEVELS TO ALPHABETICAL 12/8/21 SW |

| | | | | |
|---|--|--|-------------------------------------|--|
| <p>The Genuine. The Original.</p> <p>OVERHEAD DOOR CORPORATION 2501 SOUTH STATE HIGHWAY 121 SUITE 200 LEWISVILLE, TX 75067 (800) 275-3920</p> | <p>STATIC PRESSURE RATINGS</p> <p>DESIGN (PSF): +34.40/-38.30</p> <p>TEST (PSF): +51.60/-57.45</p> <p>IMPACT/CYCLIC RATED (YES/NO): NO</p> | <p>APPROVED SIZES</p> <p>MAX WIDTH: 16'-0"</p> <p>MAX HEIGHT: 8'-0"</p> <p>MAX SECTION HEIGHT: 28"</p> | <p>SCALE: N.T.S.</p> <p>CHECKED</p> | <p>SIZE: A</p> <p>DATE: 7/14/14</p> <p>NAME: GRT</p> |
| | <p>MODEL 980, 7800</p> | | <p>SHEET 1 OF 3</p> | |
| | <p>DRAWING PART NO. 411362</p> | | <p>REV. C</p> | |

13 GA ROLLER SLIDE ATTACHED TO BRACKET WITH 5/16-18 BOLT & NUT IN CENTER SLOT AND 1/4-20x9/16" TRACK BOLT & 1/4-20 HEX NUT THROUGH ANY TWO ALIGNING HOLES

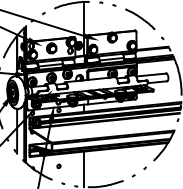


DETAIL A

2" STEEL ROLLER WITH 4" STEM. OPTIONAL NYLON BALL BEARING ROLLER AVAILABLE

13 GA COMMERCIAL 'A' FRAME TOP BRACKET ATTACHED WITH (4) 1/4-14x7/8" SELF DRILLING CRIMPTITE SCREWS

(2) 15 GA HINGE LEAFS ATTACHED WITH (3) 1/4-14x5/8" CRIMPTITE SCREWS EACH

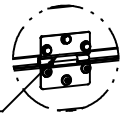


DETAIL B

14 GA HINGE BASE FACTORY ATTACHED TO DOOR WITH (5) 1/4-14x1/2" SELF DRILLING CRIMPTITE SCREWS

2" STEEL ROLLER WITH 9" 1144 GRADE OR EQUIVALENT STEM. OPTIONAL NYLON BALL BEARING ROLLER AVAILABLE

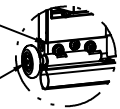
13 GA ROLLER SLIDE FACTORY RIVETED TO HINGE BASE



DETAIL C

13 GA REINFORCING BRACKET ATTACHED TO HINGE BASE WITH (2) 1/4-20x5/8" CARRIAGE BOLTS & 1/4-20 HEX NUTS AND ATTACHED TO DOOR WITH (2) 1/4-14x7/8" SELF DRILLING CRIMPTITE SCREWS

15 GA HINGE ATTACHED WITH (3) FIELD ATTACHED 1/4-14x5/8" CRIMPTITE SCREWS AND (3) FACTORY ATTACHED 1/4-14x1/2" SELF DRILLING CRIMPTITE SCREWS



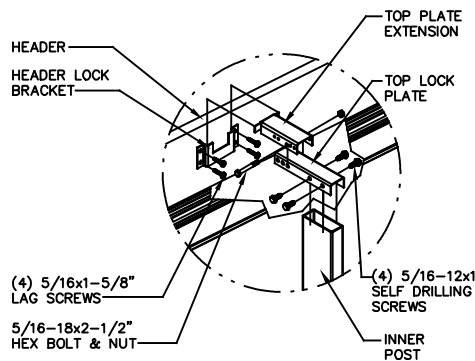
DETAIL D

12 GA BOTTOM BRACKET FACTORY ATTACHED WITH (2) 1/4-14x1/2" SELF DRILLING CRIMPTITE SCREWS AND (1) 1/4-14x5/8" TAMPER RESISTANT SCREW

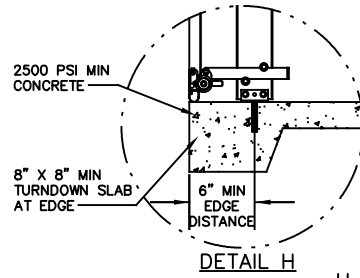
2" STEEL ROLLER WITH 4" STEM. OPTIONAL NYLON BALL BEARING ROLLER AVAILABLE



DETAIL E

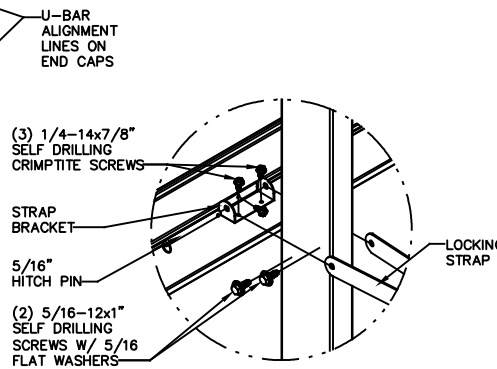
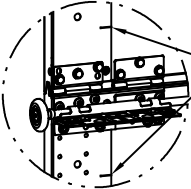


DETAIL E

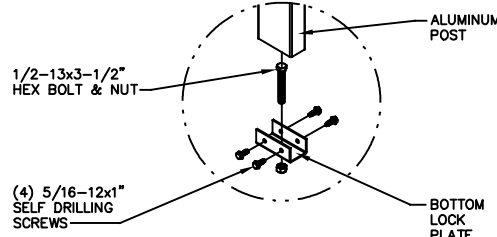


DETAIL H

U-BAR LOCATIONS



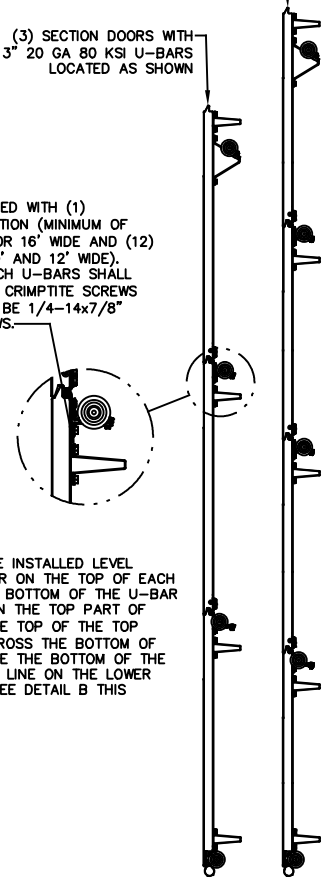
DETAIL F



DETAIL G

(4) SECTION DOORS WITH (3) 3" 20 GA 80 KSI U-BARS LOCATED AS SHOWN

(3) SECTION DOORS WITH (4) 3" 20 GA 80 KSI U-BARS LOCATED AS SHOWN



ALL U-BARS SHALL BE ATTACHED WITH (1) FASTENER AT EACH HOLE LOCATION (MINIMUM OF (18) FASTENERS PER U-BAR FOR 16' WIDE AND (12) FASTENERS PER U-BAR FOR 10' AND 12' WIDE). ALL FASTENERS USED TO ATTACH U-BARS SHALL BE 1/4-14x1/2" SELF DRILLING CRIMPTITE SCREWS EXCEPT AT ENDS WHICH SHALL BE 1/4-14x7/8" SELF DRILLING CRIMPTITE SCREWS.

NOTE: U-BARS SHALL BE INSTALLED LEVEL ACROSS DOOR. THE U-BAR ON THE TOP OF EACH SECTION SHALL HAVE THE BOTTOM OF THE U-BAR ALIGNED WITH THE LINE ON THE TOP PART OF THE END CAP (EXCEPT THE TOP OF THE TOP SECTION). THE U-BAR ACROSS THE BOTTOM OF EACH SECTION SHALL HAVE THE BOTTOM OF THE U-BAR ALIGNED WITH THE LINE ON THE LOWER PART OF THE END CAP. SEE DETAIL B THIS SHEET.

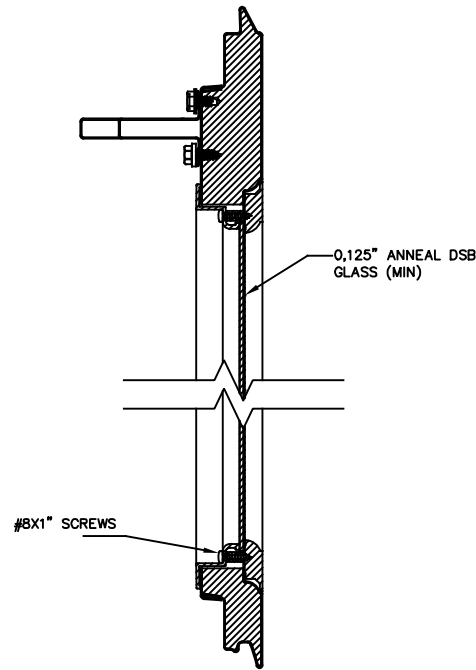
JOHN E. SCATES, PE
2560 King Arthur #124-54
Lewisville, TX 75056
FL PE 51737 TX PE 56308/F2203

PROFESSIONAL ENGINEER'S SEAL PROVIDED ONLY FOR VERIFICATION OF WINDLOAD CONSTRUCTION DETAILS.

The Genuine. The Original.

OVERHEAD DOOR CORPORATION
2501 SOUTH STATE HIGHWAY 121
SUITE 200 LEWISVILLE, TX 75067
(800) 275-3920

| | | | | | | | |
|----------------------------------|---------------|-------------------------|---------|------------------|-------------|---------|--|
| STATIC PRESSURE RATINGS | | APPROVED SIZES | | SCALE: N.T.S. | | SIZE: A | |
| DESIGN (PSF): | +34.40/-38.30 | MAX WIDTH: | 16'-0" | DATE | NAME | | |
| TEST (PSF): | +51.60/-57.45 | MAX HEIGHT: | 8'-0" | DRAWN | 7/14/14 GRT | | |
| IMPACT/CYCLIC RATED (YES/NO): NO | | MAX SECTION HEIGHT: 28" | CHECKED | | | | |
| MODEL 980, 7800 | | | | SHEET 2 OF 3 | | | |
| | | | | DRAWING PART NO. | | REV. | |
| | | | | 411362 | | C | |



NON-IMPACT FRAME
(STATIC RATED)

DETAIL J

JOHN E. SCATES, PE
2560 King Arthur #124-54
Lewisville, TX 75056
FL PE 51737 TX PE 56308/F2203
PROFESSIONAL ENGINEER'S SEAL PROVIDED ONLY FOR
VERIFICATION OF WINDLOAD CONSTRUCTION DETAILS.

The Genuine. The Original.



OVERHEAD DOOR CORPORATION
2501 SOUTH STATE HIGHWAY 121
SUITE 200 LEWISVILLE, TX 75067
(800) 275-3920

| | | | | | | | |
|----------------------------------|---------------|-------------------------|--------|------------------|------|---------|--|
| STATIC PRESSURE RATINGS | | APPROVED SIZES | | SCALE: N.T.S. | | SIZE: A | |
| DESIGN (PSF): | +34.40/-38.30 | MAX WIDTH: | 16'-0" | DATE | NAME | | |
| TEST (PSF): | +51.60/-57.45 | MAX HEIGHT: | 8'-0" | DRAWN | GRT | | |
| IMPACT/CYCLIC RATED (YES/NO): NO | | MAX SECTION HEIGHT: 28" | | CHECKED | | | |
| MODEL 980, 7800 | | | | SHEET 3 OF 3 | | | |
| | | | | DRAWING PART NO. | | REV. | |
| | | | | 411362 | | C | |