

NOTES:

1. GLAZING OPTION - .125" MINIMUM ANNEALED DSB GLAZING IN MOLDED FRAMES SCREWED TOGETHER IN TOP SECTION ONLY (WITH OR WITHOUT DECORATIVE INSERTS) MEETS UNIFORM STATIC DESIGN PRESSURES SHOWN ON THIS DRAWING. FOR THE VERTICAL RAISED PANEL GLAZING SHALL HAVE A DAYLIGHT OPENING OF 11.375" X 16.25" AND A MINIMUM OF (8) #8x1" SCREWS (2X ALONG THE HORIZONTAL AND 2X ALONG THE VERTICAL) AND FOR THE HORIZONTAL RAISED PANEL GLAZING SHALL HAVE A DAYLIGHT OPENING OF 24.375" X 6.5" AND A MINIMUM OF (8) #8x1" SCREWS (3X ALONG THE HORIZONTAL AND 1X ALONG THE VERTICAL). REFER TO DETAIL E ON SH. 3. GLAZING IS NOT IMPACT RESISTANT AND DOES NOT MEET THE REQUIREMENTS FOR WIND-BORNE DEBRIS REGION.

2. VINYL OR WOOD DOOR STOP-MOLDING NAILED WITH 6D COMMON NAILS ON 6" MAXIMUM SPACING MUST OVERLAP TOP AND BOTH ENDS OF PANELS MINIMUM 7/16".

3. SLIDE LOCK OR DRAWBAR OPERATOR REQUIRED.

4. SECTION SHALL BE CONSTRUCTED WITH FOAMED IN PLACE POLYURETHANE FOAM INSULATION CHEMICALLY BONDED TO A MINIMUM .070" FIBERGLASS FACER AND 27 GA STEEL BACKER.

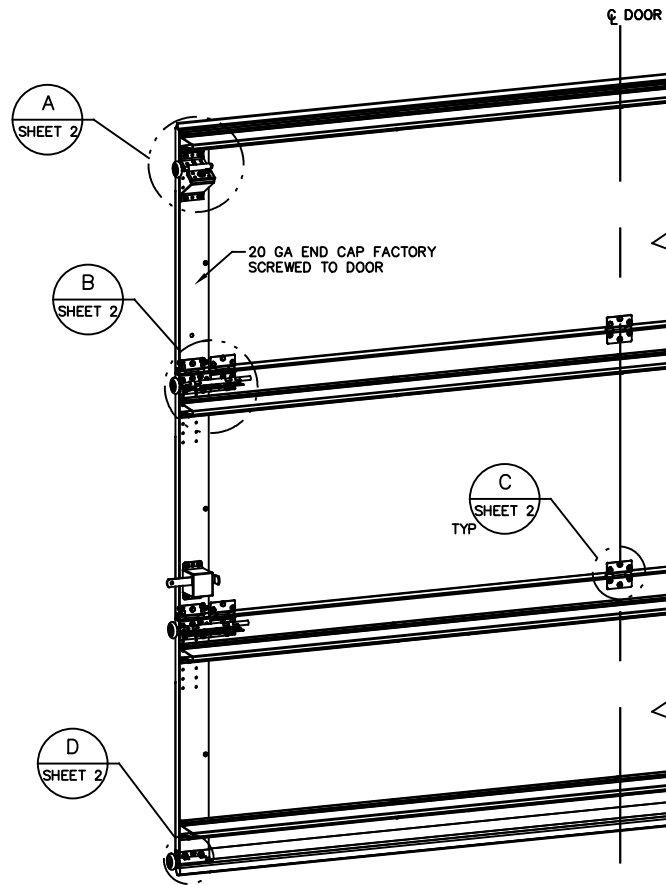
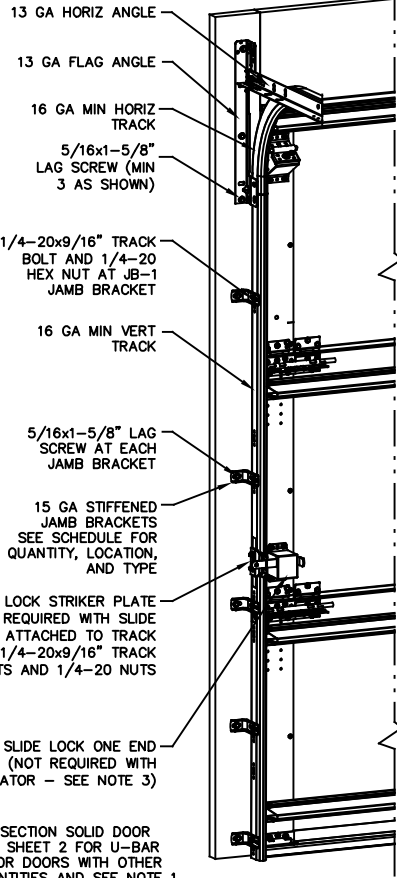
5. THE DESIGN OF THE SUPPORTING STRUCTURAL ELEMENTS SHALL BE THE RESPONSIBILITY OF THE PROFESSIONAL OF RECORD FOR THE BUILDING OR STRUCTURE AND IN ACCORDANCE WITH CURRENT BUILDING CODES FOR THE LOADS LISTED ON THIS DRAWING.

6. DOOR JAMB TO BE MINIMUM 2x4 SOUTHERN PINE LUMBER. REFER TO JAMB CONNECTION SUPPLEMENT FOR ATTACHMENT TO SUPPORTING STRUCTURE.

7. SECTION SHALL HAVE A 5" 25 GA STEEL BACKUP PLATE ACROSS THE TOP OF EACH SECTION.

8. FOR LOW HEAD ROOM LIFT CONDITIONS, TOP BRACKET SHALL BE A 13 GA LHR 7/4 TOP BRACKET WITH A MINIMUM OF (3) 1/4-14x7/8" SELF DRILLING CRIMPITE SCREWS IN LIEU OF THE BRACKET SHOWN ON THIS DRAWING. U-BAR ON TOP SECTION SHALL BE INSTALLED ON TOP OF LHR TOP BRACKETS.

NOTE: (3) SECTION SOLID DOOR SHOWN. SEE SHEET 2 FOR U-BAR LOCATIONS FOR DOORS WITH OTHER SECTION QUANTITIES AND SEE NOTE 1 THIS SHEET FOR GLAZING OPTION.



REVISIONS
PCR 32177 REV A ADDED ORACLE MODEL NUMBERS 10/28/19
PCR 32442 REV B ADDED NYLON BALL BEARING ROLLER OPTION. JQ 9/17/20
C UPDATED PER PCR32744. UPDATED REV LEVELS TO ALPHABETICAL 12/8/21 SW

SUPERIMPOSED DESIGN PRESSURE LOADS ON SUPPORTING STRUCTURE

MAX DOOR WIDTH	DOOR HEIGHT	UNIFORM LOAD EACH JAMB (PLF)
8'-0"	ALL	+91.6/-105.2
9'-0"	ALL	+103.1/-118.4

JAMB BRACKET SCHEDULE

DOOR HEIGHT	NO. OF SECTIONS	NO. OF JAMB BRACKETS (EACH JAMB)	LOCATION OF CENTERLINE OF JAMB BRACKETS MEASURED FROM BOTTOM OF TRACK (ALL DIMENSIONS ± 2")
7'-0"	3	5	2" (JB), 14" (JB), 29-1/2" (JB), 44" (JB), 63-1/4" (JB)
8'-0"	4	6	2" (JB), 14" (JB), 23" (JB), 34" (JB), 46" (JB), 66-1/2" (JB)
> 8'-0"			SEE NOTE BELOW

NOTE:
(JB-1) FOLLOWING DIMENSION DENOTES SLOTTED JAMB BRACKET ATTACHED TO TRACK WITH 1/4-20x9/16" TRACK BOLT AND NUT.
(QI) FOLLOWING DIMENSION DENOTES QUICK INSTALL JAMB BRACKET INSTALLED IN BUTTERFLY SLOT. NO ADDITIONAL HARDWARE NEEDED TO ATTACH TO TRACK.
ALL DOORS GREATER THAN 8' IN HEIGHT REQUIRE USE OF CONTINUOUS WALL ANGLE. SEE SUPPLEMENT TRACK CHART FOR DETAILS.

NOTE: COMPLIES WITH IBC/IRC 2018.

The Genuine. The Original.

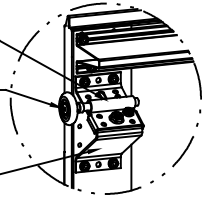


OVERHEAD DOOR CORPORATION
2501 SOUTH STATE HIGHWAY 121
SUITE 200 LEWISVILLE, TX 75067
(800) 275-3920

JOHN E. SCATES, PE
2580 King Arthur #124-25
Lewisville, TX 75056
FL PE 51737 TX PE 56308/F2203
PROFESSIONAL ENGINEER'S SEAL PROVIDED ONLY FOR VERIFICATION OF WINDLOAD CONSTRUCTION DETAILS.

STATIC PRESSURE RATINGS		APPROVED SIZES	SCALE: N.T.S.	SIZE: A
DESIGN (PSF):	+22.90/-26.30	MAX WIDTH: 9'-0"	DATE	NAME
TEST (PSF):	+34.35/-39.45	MAX HEIGHT: 10'-0"	DRAWN	GRT
IMPACT/CYCLIC RATED (YES/NO):	NO	MAX SECTION HEIGHT: 28"	CHECKED	
MODEL 980, 7800			SHEET 1 OF 3	
			DRAWING PART NO.	REV.
			411357	C

13 GA ROLLER SLIDE
 ATTACHED TO BRACKET
 WITH 5/16-18 BOLT & NUT
 IN CENTER SLOT AND
 1/4-20x9/16" TRACK BOLT
 & 1/4-20 HEX NUT
 THROUGH ANY TWO
 ALIGNING HOLES

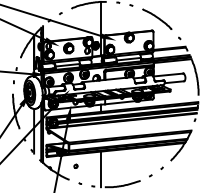


DETAIL A

2" STEEL ROLLER WITH 4"
 STEM. OPTIONAL NYLON BALL
 BEARING ROLLER AVAILABLE.

(2) 15 GA HINGE LEAFS
 ATTACHED WITH (3)
 1/4-14x5/8" CRIMPTITE
 SCREWS EACH

14 GA HINGE BASE
 FACTORY ATTACHED TO
 DOOR WITH (5)
 1/4-14x1/2" SELF DRILLING
 CRIMPTITE SCREWS

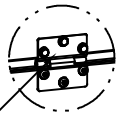


DETAIL B

2" STEEL ROLLER WITH 9" 1144
 GRADE OR EQUIVALENT STEM.
 OPTIONAL NYLON BALL
 BEARING ROLLER AVAILABLE.

13 GA ROLLER SLIDE FACTORY
 RIVETED TO HINGE BASE

13 GA REINFORCING BRACKET
 ATTACHED TO HINGE BASE WITH (2)
 1/4-20x5/8" CARRIAGE BOLTS &
 1/4-20 HEX NUTS AND ATTACHED
 TO DOOR WITH (2) 1/4-14x7/8"
 SELF DRILLING CRIMPTITE SCREWS



DETAIL C

15 GA HINGE ATTACHED WITH (3)
 FIELD ATTACHED 1/4-14x5/8"
 CRIMPTITE SCREWS AND (3)
 FACTORY ATTACHED 1/4-14x1/2"
 SELF DRILLING CRIMPTITE SCREWS

12 GA BOTTOM BRACKET FACTORY
 ATTACHED WITH (2) 1/4-14x1/2"
 SELF DRILLING CRIMPTITE SCREWS
 AND (1) 1/4-14x5/8" TAMPER
 RESISTANT SCREW



DETAIL D

2" STEEL ROLLER WITH 4"
 STEM. OPTIONAL NYLON BALL
 BEARING ROLLER AVAILABLE.

U-BAR
 ALIGNMENT
 LINES ON
 END CAPS

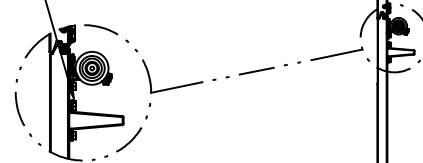
U-BAR LOCATIONS

(5) SECTION DOORS WITH
 (6) 3" 20 GA 80 KSI U-BARS
 LOCATED AS SHOWN

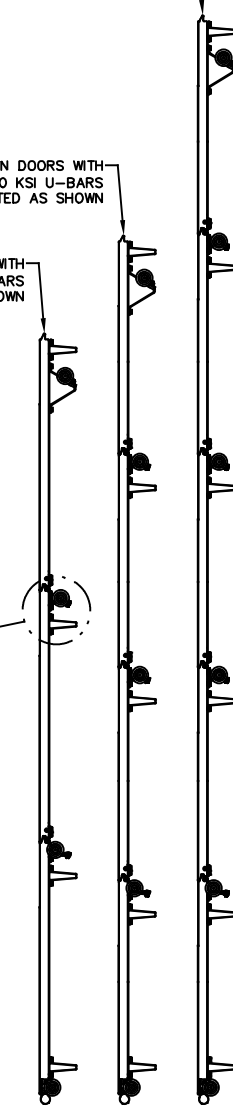
(4) SECTION DOORS WITH
 (5) 3" 20 GA 80 KSI U-BARS
 LOCATED AS SHOWN

(3) SECTION DOORS WITH
 (4) 3" 20 GA 80 KSI U-BARS
 LOCATED AS SHOWN

ALL U-BARS SHALL BE ATTACHED WITH (1)
 FASTENER AT EACH HOLE LOCATION (MINIMUM OF
 (10) FASTENERS EACH U-BAR). ALL FASTENERS
 USED TO ATTACH U-BARS SHALL BE 1/4-14x1/2"
 SELF DRILLING CRIMPTITE SCREWS EXCEPT AT
 ENDS WHICH SHALL BE 1/4-14x7/8" SELF
 DRILLING CRIMPTITE SCREWS.



NOTE: U-BARS SHALL BE INSTALLED LEVEL
 ACROSS DOOR. THE U-BAR ON THE TOP OF EACH
 SECTION SHALL HAVE THE BOTTOM OF THE U-BAR
 ALIGNED WITH THE LINE ON THE TOP PART OF
 THE END CAP (EXCEPT THE TOP OF THE TOP
 SECTION). THE U-BAR ACROSS THE BOTTOM OF
 EACH SECTION SHALL HAVE THE BOTTOM OF THE
 U-BAR ALIGNED WITH THE LINE ON THE LOWER
 PART OF THE END CAP. SEE DETAIL B THIS
 SHEET.



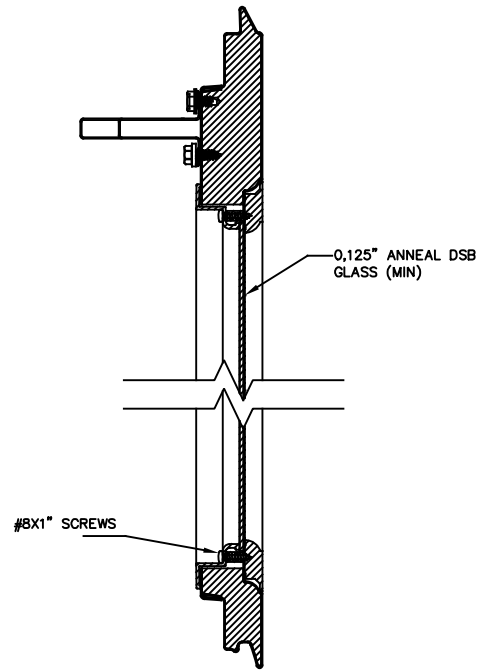
JOHN E. SCATES, PE
 2560 King Arthur #124-25
 Lewisville, TX 75056
 FL PE 51737 TX PE 56308/F2203
 PROFESSIONAL ENGINEER'S SEAL PROVIDED ONLY FOR
 VERIFICATION OF WINDLOAD CONSTRUCTION DETAILS.

The Genuine. The Original.



OVERHEAD DOOR CORPORATION
 2501 SOUTH STATE HIGHWAY 121
 SUITE 200 LEWISVILLE, TX 75067
 (800) 275-3920

STATIC PRESSURE RATINGS		APPROVED SIZES		SCALE: N.T.S.		SIZE: A	
DESIGN (PSF):	+22.90/-26.30	MAX WIDTH:	9'-0"	DATE	NAME		
TEST (PSF):	+34.35/-39.45	MAX HEIGHT:	10'-0"	DRAWN	7/14/14 GRT		
IMPACT/CYCLIC RATED (YES/NO): NO		MAX SECTION HEIGHT: 28'	CHECKED				
MODEL 980, 7800				SHEET 2 OF 3			
				DRAWING PART NO.		REV.	
				411357		C	



NON-IMPACT FRAME
(STATIC RATED)

DETAIL E

JOHN E. SCATES, PE
2560 King Arthur #124-25
Lewisville, TX 75056
FL PE 51737 TX PE 56308/F2203
PROFESSIONAL ENGINEER'S SEAL PROVIDED ONLY FOR
VERIFICATION OF WINDLOAD CONSTRUCTION DETAILS.

The Genuine. The Original.



OVERHEAD DOOR CORPORATION
2501 SOUTH STATE HIGHWAY 121
SUITE 200 LEWISVILLE, TX 75067
(800) 275-3920

STATIC PRESSURE RATINGS		APPROVED SIZES		SCALE: N.T.S.		SIZE: A	
DESIGN (PSF):	+22.90/-26.30	MAX WIDTH:	9'-0"	DATE	NAME		
TEST (PSF):	+34.35/-39.45	MAX HEIGHT:	10'-0"	DRAWN	GRT		
IMPACT/CYCLIC RATED (YES/NO): NO		MAX SECTION HEIGHT: 28"		CHECKED			
MODEL 980, 7800				SHEET 3 OF 3			
				DRAWING PART NO. 411357		REV. C	